





1 TREE MITIGATION PLAN

1:20

TREE MITIGATION SPECIES:

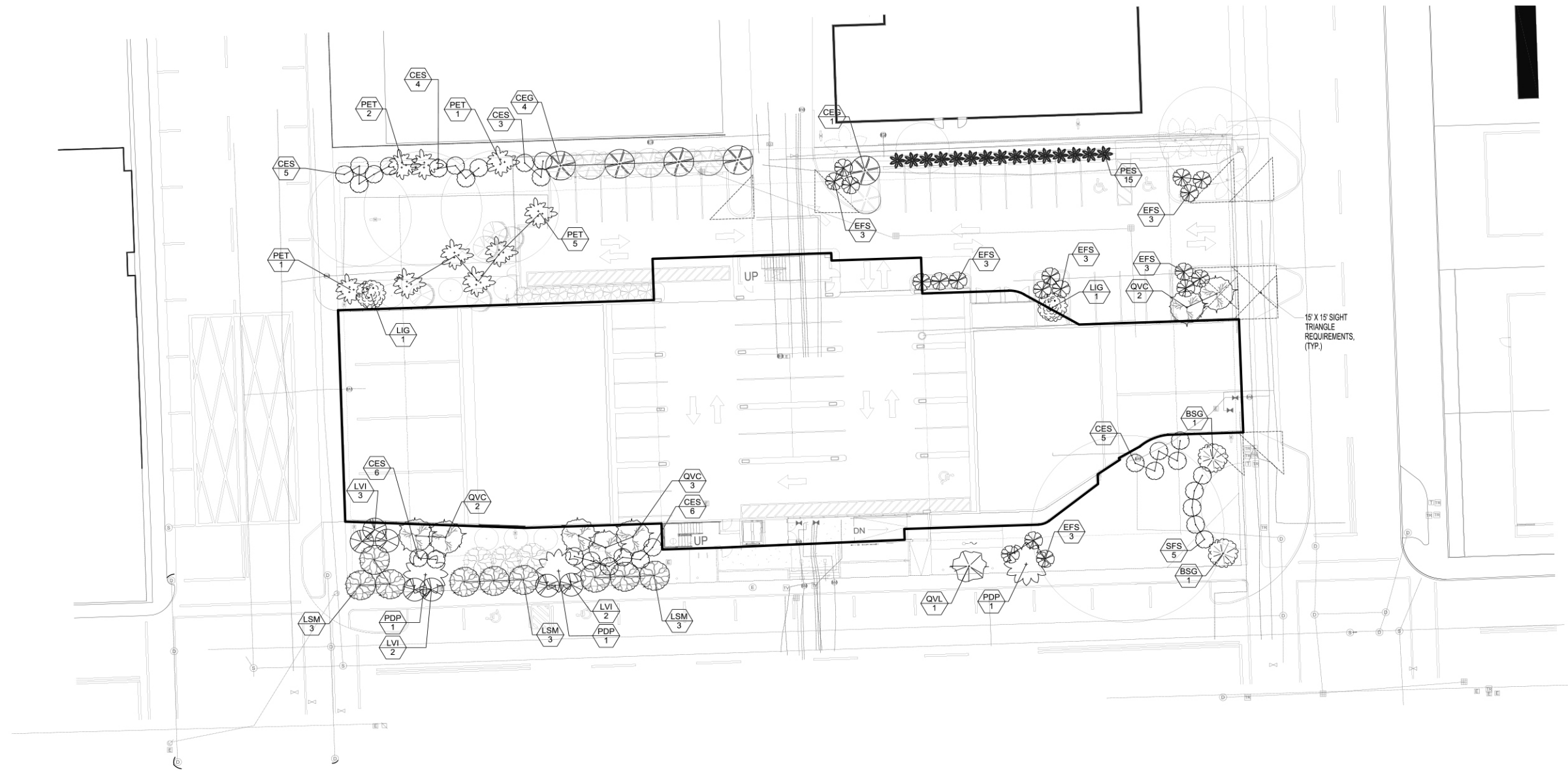
- 
 6 QTY - *QUERCUS VIRGINIANA 'CATHEDRAL'* - CATHEDRAL LIVE OAK (FIELD GROWN, 16' MIN OAH, 4" MIN DBH, 8' MIN. SPRD, 7' MIN CT, FLORIDA NO. 1)
- 
 3 QTY - *QUERCUS VIRGINIANA 'CATHEDRAL'* - WILD TAMARIND TREE (FIELD GROWN, 16' MIN OAH, 4" MIN DBH, 8' MIN. SPRD, 7' MIN CT, FLORIDA NO. 1)

PALM MITIGATION SPECIES:

- 
 4 QTY - *CONOCARPUS ERECTUS* - GREEN BUTTWOOD (FIELD GROWN, 12' MIN OAH, 3" MIN DBH, STANDARD, FLORIDA NO. 1)
- 
 5 QTY - *GUAIACUM SANCTUM* - LIGNUM VITAE (FIELD GROWN, 12' MIN OAH, 3" MIN DBH, STANDARD, FLORIDA NO. 1)

- 
 14 QTY - *EUGENIA FOETIDA* - SPANISH STOPPER (FIELD GROWN, 12' MIN OAH, 3" MIN DBH, MULTI-FORM, FLORIDA NO. 1)



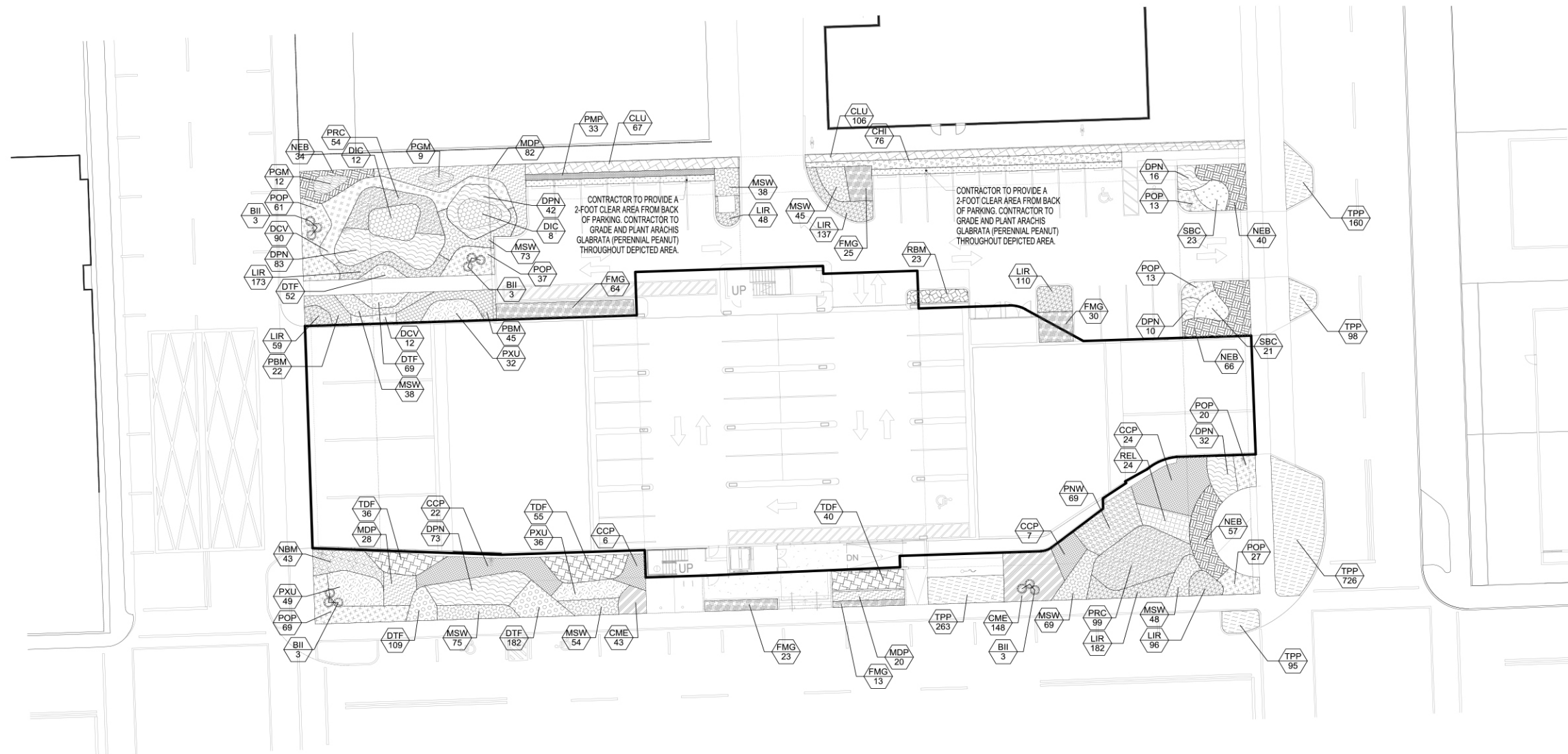


1 CANOPY PLANTING PLAN

1:20

- | | | | | | |
|---------------------------|---|--------------------|--|-------------------|--|
| LARGE CANOPY TREES | | SMALL TREES | | PALM TREES | |
| BSG | GUMBO LIMBO
<i>Bursera simaruba</i> | CEG | GREEN BUTTONWOOD
<i>Conocarpus erectus</i> | PDP | MEDJOOl DATE PALM
<i>Phoenix dactylifera 'Medjool'</i> |
| LSM | WILD TAMARIND TREE
<i>Lysiloma sabicu</i> | CES | SILVER BUTTONWOOD
<i>Conocarpus erectus 'Sericea'</i> | PES | SOLITAIRE PALM, SINGLE
<i>Ptychosperma elegans 'Single'</i> |
| QVL | SOUTHERN LIVE OAK
<i>Quercus virginiana</i> | EFS | SPANISH STOPPER
<i>Eugenia foetida</i> | PET | SOLITAIRE PALM, TRIPLE
<i>Ptychosperma elegans 'Triple'</i> |
| QVC | CATHEDRAL LIVE OAK
<i>Quercus virginiana 'Cathedral'</i> | LVI | LIGNUM VITAE
<i>Guaiaacum sanctum</i> | | |
| | | LIG | JAPANESE PRIVET
<i>Ligustrum japonicum</i> | | |
| | | SFS | SINGAPORE FRANGIPANI
<i>Plumeria obtusa</i> | | |



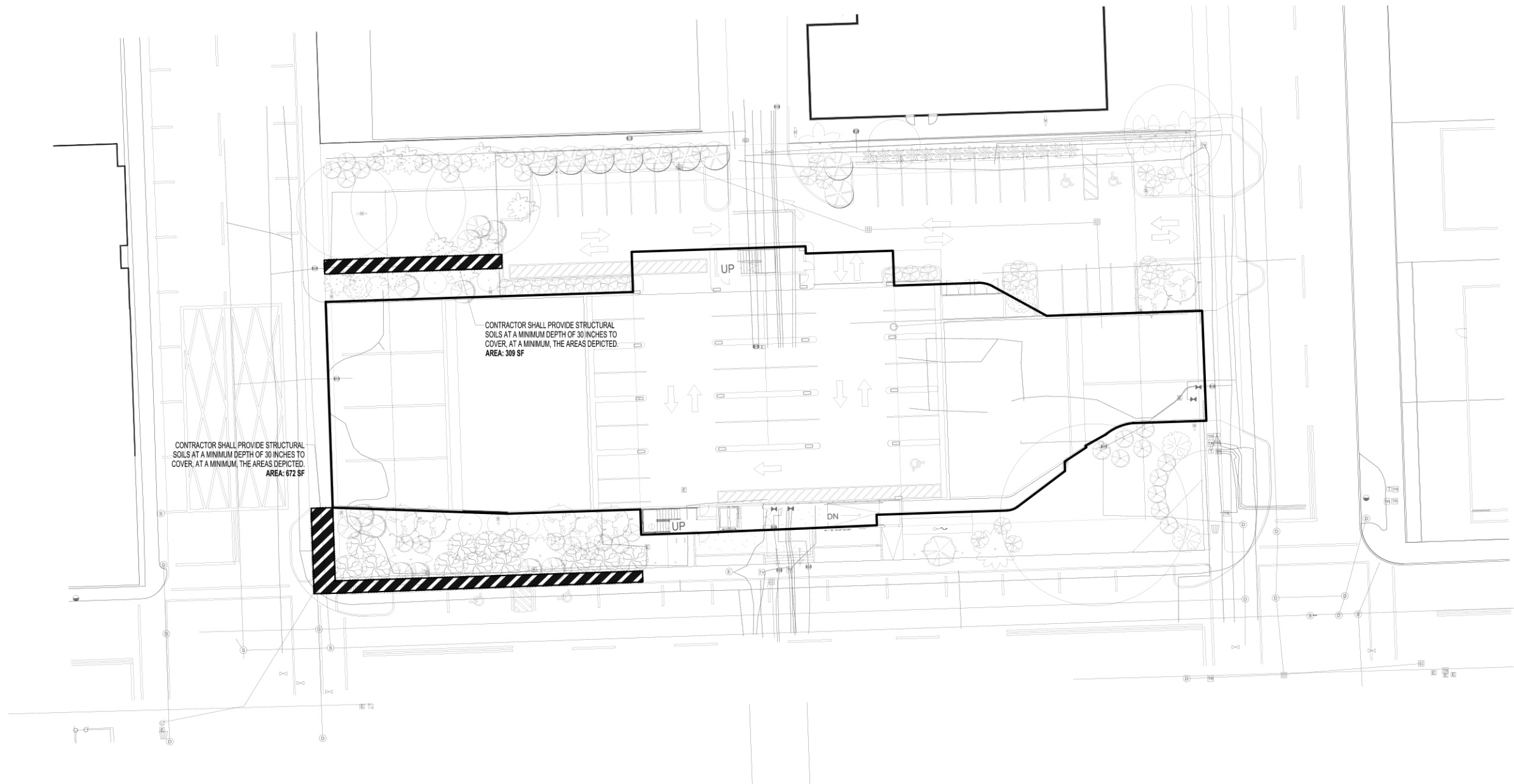


1 UNDERSTORY PLANTING PLAN

1:20



PROPOSED UNDERSTORY PLANTING					
CME	DWARF EMERALD BLANKET CARISSA <i>Carissa macrocarpa</i> 'Emerald Blanket'	NEB	BOSTON FERN <i>Nephrolepis exaltata</i>	TPP	PURPLE QUEEN <i>Tradescantia pallida</i>
CCP	CAT PALM <i>Chamaedorea cataractarum</i>	POP	FLORIDA PEPEROMIA <i>Peperomia obtusifolia</i>	TDF	FAKAHATCHEE GRASS <i>Tripsacum dactyloides</i>
CHI	COCOPLUM <i>Chrysobalanus icaco</i> 'Horizontalis'	PBM	PHILODENDRON 'BURLE MARX' <i>Philodendron 'Burle Marx'</i>	---	PERENNIAL PEANUT <i>Arachis glabrata</i>
CLU	PITCH APPLE <i>Clusia rosea</i>	PGM	GIANT PHILODENDRON <i>Philodendron 'Giganteum'</i>		
DCV	DWARF CORKSCREW CROTON 'MAMMY FIRE' <i>Codiaeum variegatum</i> 'Mammy Fire'	PRC	ROJO CONGO PHILODENDRON <i>Philodendron 'Rojo Congo'</i>		
DTF	VARIEGATED FLAX LILY <i>Dianella tasmanica</i> 'Variegata'	PXU	PHILODENDRON 'XANADU' <i>Philodendron 'Xanadu'</i>		
DIC	DIOON <i>Dioon edule</i>	PMP	PRINGLES PODOCARPUS <i>Podocarpus macrophyllus</i> 'Pringles'		
FMG	GREEN ISLAND FICUS <i>Ficus microcarpa</i> 'Green Island'	PNW	WILD COFFEE <i>Psychotria nervosa</i>		
LIR	LILY TURF <i>Liriope muscari</i>	DPN	DWARF WILD COFFEE <i>Psychotria nervosa</i> 'Little Psycho'		
MSW	WART FERN <i>Microsorium scolopendrium</i> 'Wart Fern'	REL	LADY PALM <i>Rhapis excelsa</i>		
MDP	SWISS CHEESE PHILODENDRON <i>Monstera deliciosa</i>	RBM	MEXICAN PETUNIA <i>Ruellia brittoniana</i>		
NBM	MACHO FERN <i>Nephrolepis biserrata</i>	SBC	CORDGRASS <i>Spartina bakeri</i>		



1 SUSPENDED SOILS PLAN

1:20

NOTE: CONTRACTOR SHALL COORDINATE WITH THE SUSPENDED PAVEMENT SYSTEM'S MANUFACTURER (SILVA CELL, STRATA VAULT, ANY OTHER APPROVED EQUAL) TO DETERMINE APPROPRIATE PRODUCT ASSEMBLY AND SHALL INSTALL ALL PRODUCT AND ITS COMPONENTS CONSISTENT WITH MANUFACTURER'S RECOMMENDATIONS. CITY TO PROVIDE GEO-TECHNICAL ENGINEERING REPORT TO CONTRACTOR; WHERE REPORT DOES NOT PROVIDE THE NECESSARY INFORMATION TO DETERMINE APPROPRIATE PRODUCT ASSEMBLY, CONTRACTOR SHALL INCLUDE IN THEIR BID ALL COSTS TO PERFORM ALL AND ANY NECESSARY SOIL TESTING TO MAKE THE DETERMINATION.

 **STRUCTURAL SOILS AREA**
DEPICTED IN SOFT



SUSPENDED SOILS PLAN

10-11-2021

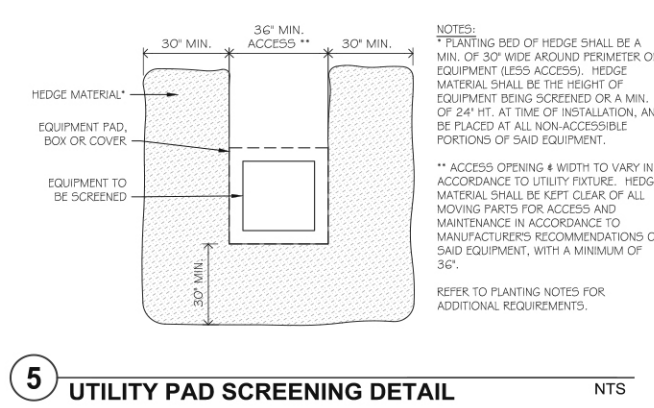
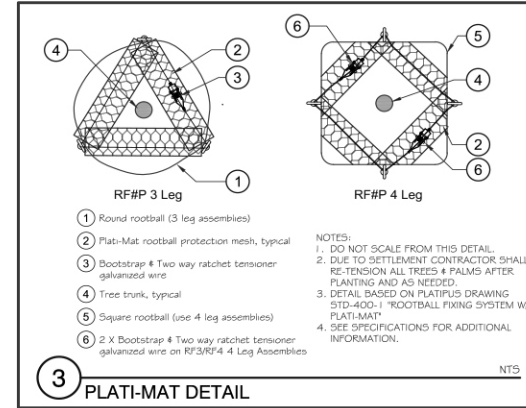
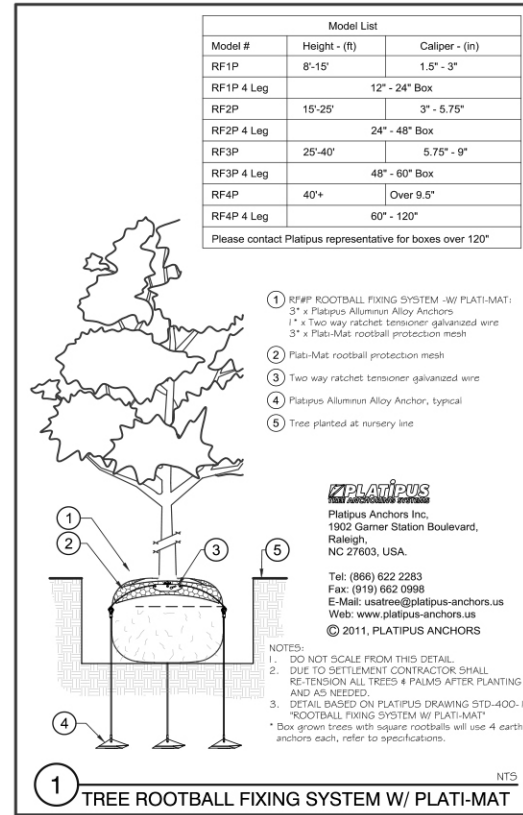
MIAMI BEACH HISTORIC PRESERVATION BOARD - FINAL SUBMITTAL

CITY OF MIAMI BEACH, OFFICE OF CAPITAL IMPROVEMENT
PROJECTS-FIRE STATION #01

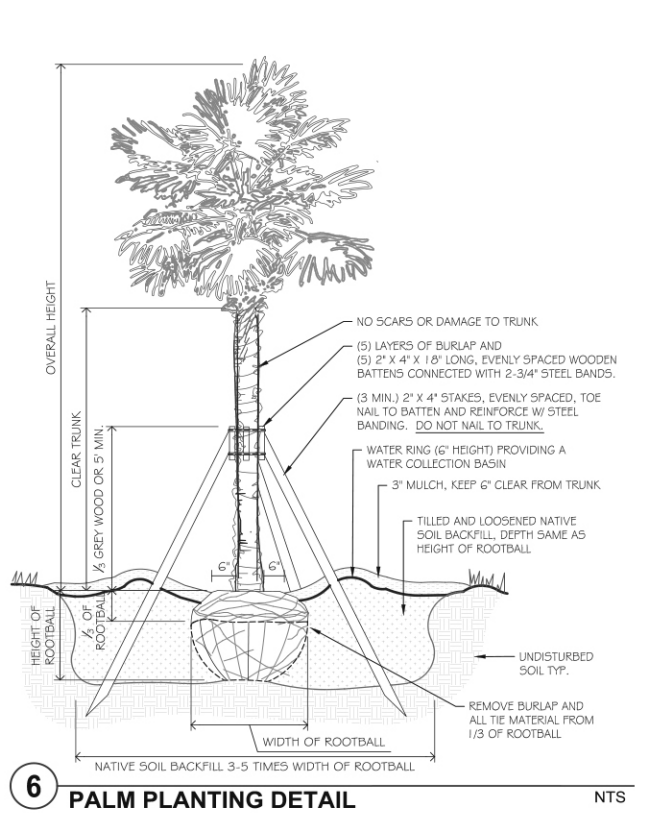
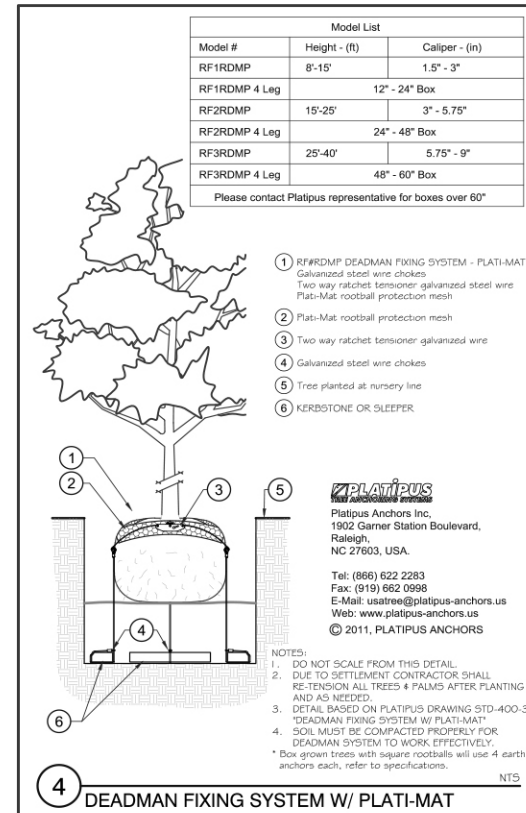
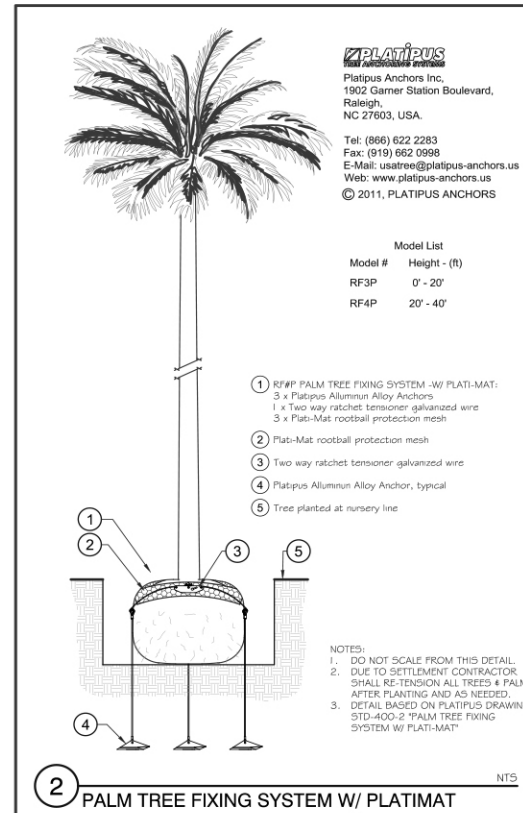
833 6TH STREET MIAMI BEACH, FL 33139

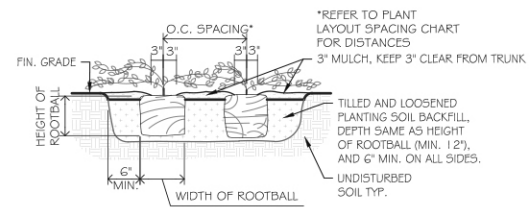
Wannemacher Jensen Architects, Inc.
132 Mirror Lake Drive North Unit 301
St. Petersburg, Florida 33701-3214
(727) 822-5566 fax (727) 822-5475
www.wjarc.com
AR94244
©Wannemacher Jensen Architects, Inc.





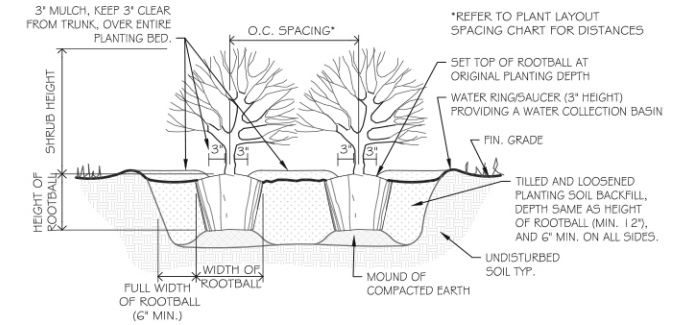
- ABBREVIATIONS / DEFINITIONS:**
- ADA AMERICAN WITH DISABILITIES ACT
 - ALT ALTERNATE
 - APPROX APPROXIMATE
 - ARCH ARCHITECT (ARCHITECTURAL)
 - BLDG BUILDING (STRUCTURE)
 - CL CENTERLINE
 - CLF CHAIN LINK FENCE (VINYL CLAD FENCE)
 - COL COLUMN
 - CONC CONCRETE
 - CMU CONCRETE MASONRY UNIT
 - CONT CONTINUOUS
 - DIA DIAMETER
 - DWG(S) DRAWING (DRAWINGS)
 - ELEC ELECTRICAL (ELECTRICAL ENGINEER)
 - ENG ENGINEER
 - EQUIP EQUIPMENT
 - EOP EDGE OF PAVEMENT
 - EXIST EXISTING
 - EXT EXTERIOR
 - FBC FLORIDA BUILDING CODE
 - FIN FINISH
 - FT FEET
 - HC HANDICAP (ACCESSIBLE)
 - HT HEIGHT
 - HORIZ HORIZONTAL
 - IN INCH
 - MAX MAXIMUM (MEASUREMENT MUST BE EQUAL OR LESS)
 - MIN MINIMUM (MEASUREMENT MUST BE EQUAL OR GREATER)
 - MISC MISCELLANEOUS
 - NIC NOT IN CONTRACT (NOT INCLUDED, OR BY OTHERS)
 - NTS NOT TO SCALE
 - OA OVERALL
 - OC ON CENTERS
 - PL PROPERTY LINE (OR PLAT LIMIT/LINE)
 - POC POINT OF CONNECTION
 - PT PRESSURE TREATED PINE
 - SYM SYMBOL
 - QTY QUANTITY
 - R (RAD) RADIUS (OR RISER)
 - REINF REINFORCE
 - SIM SIMILAR
 - SPEC(S) SPECIFICATION (SPECIFICATIONS)
 - SPRD SPREAD (OVERALL WIDTH OF CANOPY)
 - SQ SQUARE
 - SS STAINLESS STEEL
 - STD STANDARD
 - TEMP TEMPORARY
 - TBD TO BE DETERMINED
 - TYP TYPICAL
 - W/ WITH
 - W/O WITHOUT





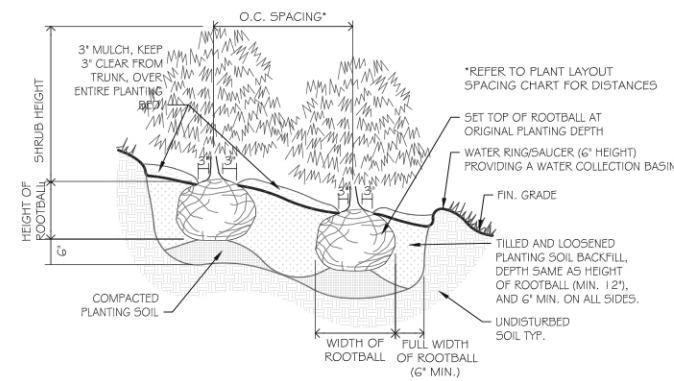
3 GROUNDCOVER PLANTING DETAIL

NTS



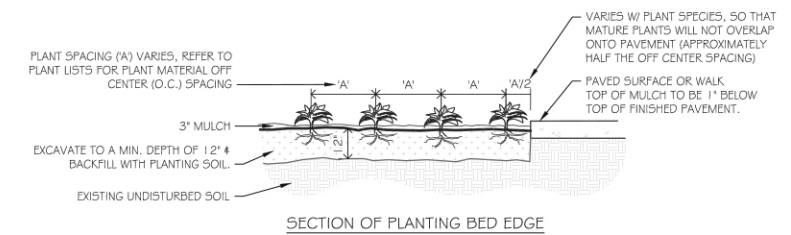
1 SHRUB PLANTING DETAIL

NTS



4 SHRUB PLANTING ON SLOPE DETAIL

NTS



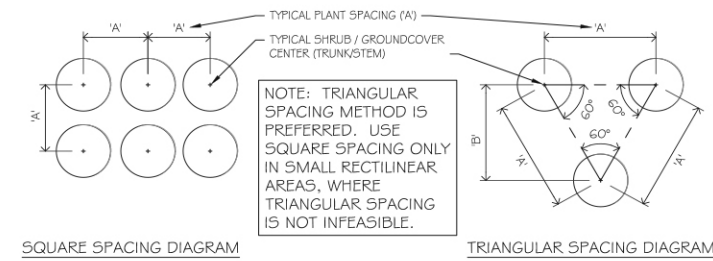
2 SPACING & LAYOUT DETAIL

NTS

GROUNDCOVER / SHRUB SPACING CHART

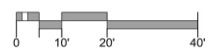
PLANT SPACING (A)	ROW SPACING (B)
6 IN. O.C.	5 IN. O.C.
8 IN. O.C.	7 IN. O.C.
10 IN. O.C.	9 IN. O.C.
12 IN. O.C.	10 IN. O.C.
15 IN. O.C.	13 IN. O.C.
18 IN. O.C.	15 IN. O.C.
24 IN. O.C.	21 IN. O.C.
30 IN. O.C.	26 IN. O.C.
36 IN. O.C.	31 IN. O.C.
48 IN. O.C.	41 IN. O.C.
54 IN. O.C.	46 IN. O.C.
60 IN. O.C.	52 IN. O.C.

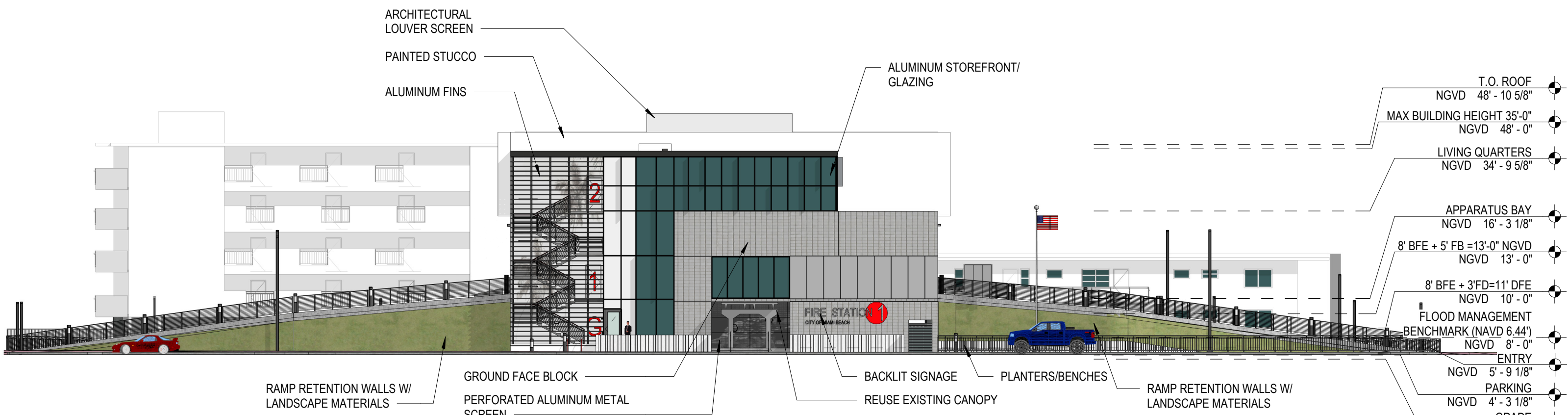
ROW SPACING = PLANT SPACING X 0.86



5 GROUNDCOVER & SHRUB SPACING DETAIL (ALL AREAS)

NTS





ARCHITECTURAL LOUVER SCREEN
 PAINTED STUCCO
 ALUMINUM FINS

ALUMINUM STOREFRONT/
 GLAZING

T.O. ROOF NGVD 48' - 10 5/8"
 MAX BUILDING HEIGHT 35'-0" NGVD 48' - 0"
 LIVING QUARTERS NGVD 34' - 9 5/8"
 APPARATUS BAY NGVD 16' - 3 1/8"
 8' BFE + 5' FB = 13'-0" NGVD NGVD 13' - 0"
 8' BFE + 3' FD = 11' DFE NGVD 10' - 0"
 FLOOD MANAGEMENT BENCHMARK (NAVD 6.44') NGVD 8' - 0"
 ENTRY NGVD 5' - 9 1/8"
 PARKING NGVD 4' - 3 1/8"
 GRADE NGVD 3' - 4 5/8"

RAMP RETENTION WALLS W/
 LANDSCAPE MATERIALS

GROUND FACE BLOCK
 PERFORATED ALUMINUM METAL SCREEN

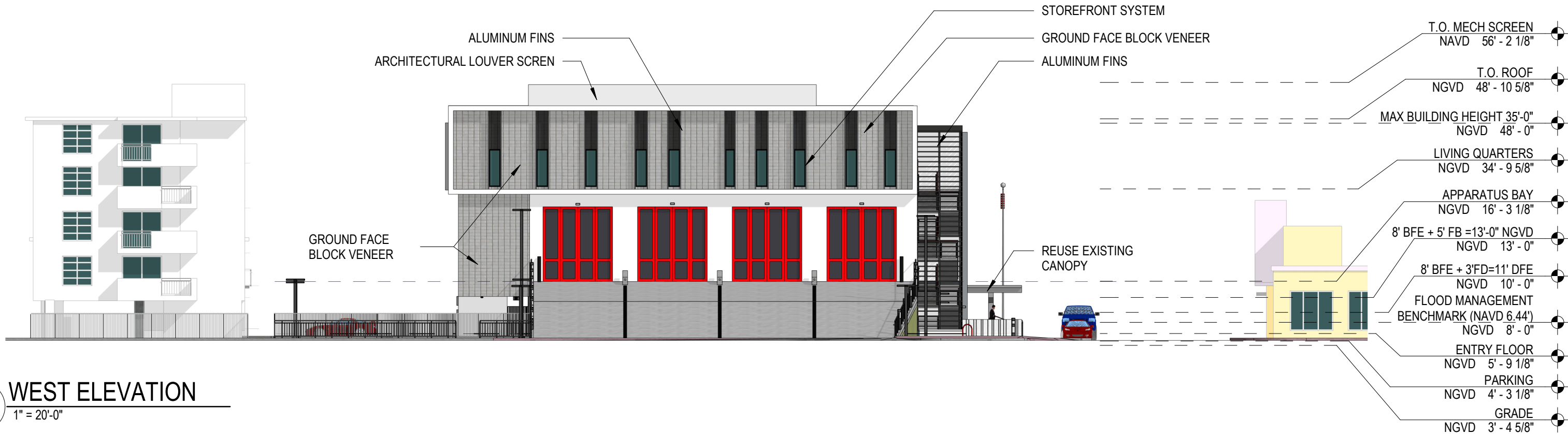
BACKLIT SIGNAGE
 REUSE EXISTING CANOPY

PLANTERS/BENCHES

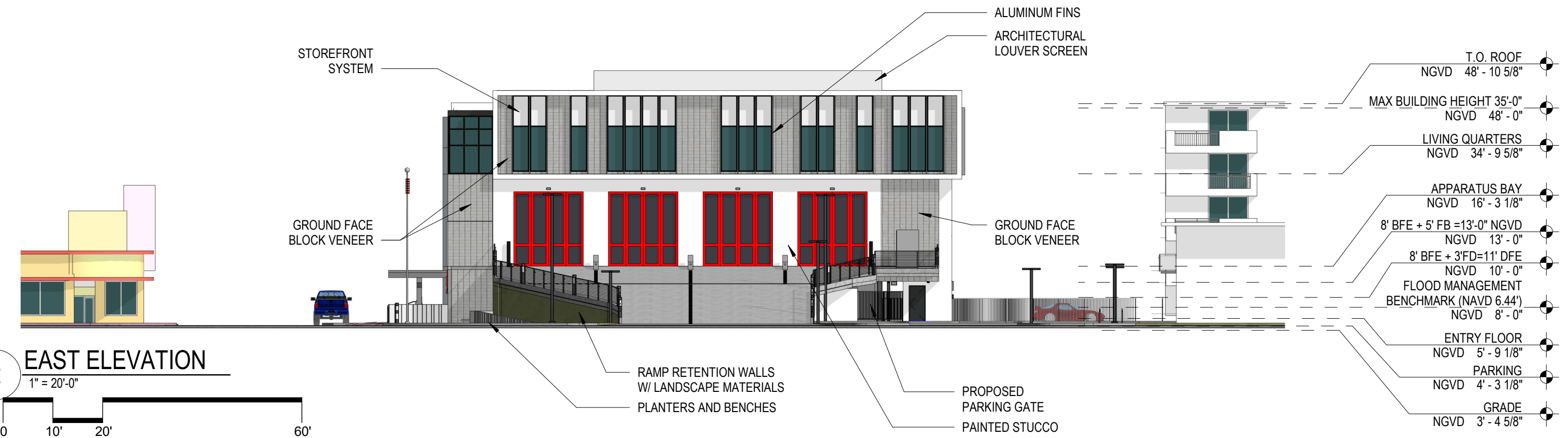
RAMP RETENTION WALLS W/
 LANDSCAPE MATERIALS

1 SOUTH ELEVATION
 1" = 20'-0"





1 WEST ELEVATION
1" = 20'-0"



2 EAST ELEVATION
1" = 20'-0"



RENDERINGS (FUTURE HARMONIZATION)
 10-11-2021
 MIAMI BEACH HISTORIC PRESERVATION BOARD - FIRST SUBMITTAL

**CITY OF MIAMI BEACH, OFFICE OF CAPITAL IMPROVEMENT
 PROJECTS-FIRE STATION #01**

833 6TH STREET MIAMI BEACH, FL 33139



Digitally signed
 by Jason Jensen
 Date:
 2021.12.20
 10:10:46 -05'00'

Wannemacher Jensen Architects, Inc.
 132 Mirror Lake Drive North Unit 301
 St. Petersburg, Florida 33701-3214
 (727) 822-5566 fax (727) 822-5475
 www.wjarc.com
 AR94244
 ©Wannemacher Jensen Architects, Inc.





RENDERINGS (FUTURE HARMONIZATION)
10-11-2021
MIAMI BEACH HISTORIC PRESERVATION BOARD - FIRST SUBMITTAL

CITY OF MIAMI BEACH, OFFICE OF CAPITAL IMPROVEMENT
PROJECTS-FIRE STATION #01

833 6TH STREET MIAMI BEACH, FL 33139



Digitally signed
by Jason Jensen
Date:
2021.12.20
10:10:46 -05'00'

Wannemacher Jensen Architects, Inc.
132 Mirror Lake Drive North Unit 301
St. Petersburg, Florida 33701-3214
(727) 822-5566 fax (727) 822-5475
www.wjarc.com
AR94244
©Wannemacher Jensen Architects, Inc.





RENDERINGS (FUTURE HARMONIZATION)
 10-11-2021
 MIAMI BEACH HISTORIC PRESERVATION BOARD - FIRST SUBMITTAL

**CITY OF MIAMI BEACH, OFFICE OF CAPITAL IMPROVEMENT
 PROJECTS-FIRE STATION #01**

833 6TH STREET MIAMI BEACH, FL 33139



Digitally signed
 by Jason Jensen
 Date:
 2021.12.20
 10:10:46 -05'00'

Wannemacher Jensen Architects, Inc.
 132 Mirror Lake Drive North Unit 301
 St. Petersburg, Florida 33701-3214
 (727) 822-5566 fax (727) 822-5475
 www.wjarc.com
 AR94244
 ©Wannemacher Jensen Architects, Inc.





RENDERINGS (FUTURE HARMONIZATION)
 10-11-2021
 MIAMI BEACH HISTORIC PRESERVATION BOARD - FIRST SUBMITTAL

CITY OF MIAMI BEACH, OFFICE OF CAPITAL IMPROVEMENT
 PROJECTS-FIRE STATION #01

833 6TH STREET MIAMI BEACH, FL 33139



Digitally signed
 by Jason Jensen
 Date:
 2021.12.20
 10:10:46 -05'00'

Wannemacher Jensen Architects, Inc.
 132 Mirror Lake Drive North Unit 301
 St. Petersburg, Florida 33701-3214
 (727) 822-5566 fax (727) 822-5475
 www.wjarc.com
 AR94244
 ©Wannemacher Jensen Architects, Inc.

