



**DECORATIVE PARKING SCREEN**

**KEY PLAN**



**RENDERINGS**

12-13-2021  
 MIAMI BEACH HISTORIC PRESERVATION BOARD - FINAL SUBMITTAL

CITY OF MIAMI BEACH, OFFICE OF CAPITAL IMPROVEMENT  
 PROJECTS-FIRE STATION #01

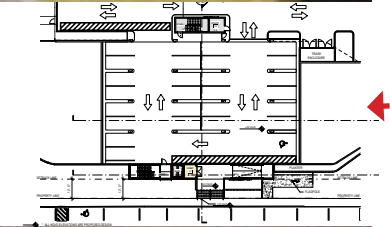
833 6TH STREET MIAMI BEACH, FL 33139



Digitally signed  
 by Jason Jensen  
 Date:  
 2021.12.20  
 10:10:46 -05'00'

Wannemacher Jensen Architects, Inc.  
 132 Mirror Lake Drive North Unit 301  
 St. Petersburg, Florida 33701-3214  
 (727) 822-5566 fax (727) 822-5475  
 www.wjarc.com  
 AR94244  
 ©Wannemacher Jensen Architects, Inc.





KEY PLAN



RENDERINGS

12-13-2021  
 MIAMI BEACH HISTORIC PRESERVATION BOARD - FINAL SUBMITTAL

CITY OF MIAMI BEACH, OFFICE OF CAPITAL IMPROVEMENT  
 PROJECTS-FIRE STATION #01

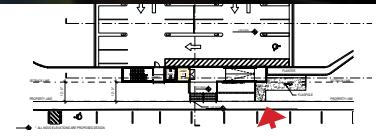
833 6TH STREET MIAMI BEACH, FL 33139



Digitally signed  
 by Jason Jensen  
 Date:  
 2021.12.20  
 10:10:46 -05'00'

Wannemacher Jensen Architects, Inc.  
 132 Mirror Lake Drive North Unit 301  
 St. Petersburg, Florida 33701-3214  
 (727) 822-5566 fax (727) 822-5475  
 www.wjarc.com  
 AR94244  
 ©Wannemacher Jensen Architects, Inc.





**RENDERINGS**

12-13-2021  
 MIAMI BEACH HISTORIC PRESERVATION BOARD - FINAL SUBMITTAL

**CITY OF MIAMI BEACH, OFFICE OF CAPITAL IMPROVEMENT  
 PROJECTS-FIRE STATION #01**

833 6TH STREET MIAMI BEACH, FL 33139



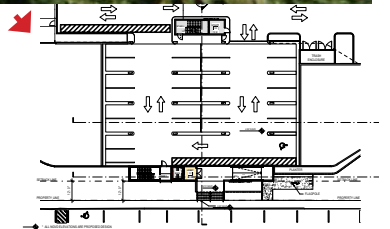
Digitally signed  
 by Jason Jensen  
 Date:  
 2021.12.20  
 10:10:46 -05'00'

**KEY PLAN**



Wannemacher Jensen Architects, Inc.  
 132 Mirror Lake Drive North Unit 301  
 St. Petersburg, Florida 33701-3214  
 (727) 822-5566 fax (727) 822-5475  
 www.wjarc.com  
 AR94244  
 ©Wannemacher Jensen Architects, Inc.





**RENDERINGS**

12-13-2021  
 MIAMI BEACH HISTORIC PRESERVATION BOARD - FINAL SUBMITTAL

**CITY OF MIAMI BEACH, OFFICE OF CAPITAL IMPROVEMENT  
 PROJECTS-FIRE STATION #01**

833 6TH STREET MIAMI BEACH, FL 33139



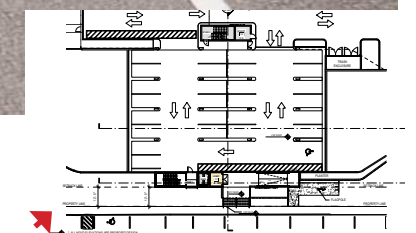
Digitally signed  
 by Jason Jensen  
 Date:  
 2021.12.20  
 10:10:46 -05'00'

**KEY PLAN**



Wannemacher Jensen Architects, Inc.  
 132 Mirror Lake Drive North Unit 301  
 St. Petersburg, Florida 33701-3214  
 (727) 822-5566 fax (727) 822-5475  
 www.wjarc.com  
 AR94244  
 ©Wannemacher Jensen Architects, Inc.





**RENDERINGS**

12-13-2021  
 MIAMI BEACH HISTORIC PRESERVATION BOARD - FINAL SUBMITTAL

**CITY OF MIAMI BEACH, OFFICE OF CAPITAL IMPROVEMENT  
 PROJECTS-FIRE STATION #01**

833 6TH STREET MIAMI BEACH, FL 33139



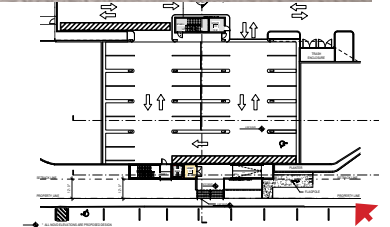
Digitally signed  
 by Jason Jensen  
 Date:  
 2021.12.20  
 10:10:46 -05'00'

**KEY PLAN**



Wannemacher Jensen Architects, Inc.  
 132 Mirror Lake Drive North Unit 301  
 St. Petersburg, Florida 33701-3214  
 (727) 822-5566 fax (727) 822-5475  
 www.wjarc.com  
 AR94244  
 ©Wannemacher Jensen Architects, Inc.





KEY PLAN



RENDERINGS

12-13-2021  
 MIAMI BEACH HISTORIC PRESERVATION BOARD - FINAL SUBMITTAL

CITY OF MIAMI BEACH, OFFICE OF CAPITAL IMPROVEMENT  
 PROJECTS-FIRE STATION #01

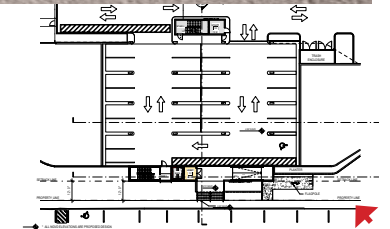
833 6TH STREET MIAMI BEACH, FL 33139



Digitally signed  
 by Jason Jensen  
 Date:  
 2021.12.20  
 10:10:46 -05'00'

Wannemacher Jensen Architects, Inc.  
 132 Mirror Lake Drive North Unit 301  
 St. Petersburg, Florida 33701-3214  
 (727) 822-5566 fax (727) 822-5475  
 www.wjarc.com  
 AR94244  
 ©Wannemacher Jensen Architects, Inc.





KEY PLAN



RENDERINGS

12-13-2021  
 MIAMI BEACH HISTORIC PRESERVATION BOARD - FINAL SUBMITTAL

CITY OF MIAMI BEACH, OFFICE OF CAPITAL IMPROVEMENT  
 PROJECTS-FIRE STATION #01

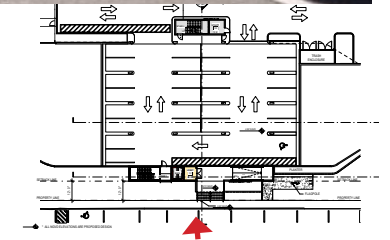
833 6TH STREET MIAMI BEACH, FL 33139



Digitally signed  
 by Jason Jensen  
 Date:  
 2021.12.20  
 10:10:46 -05'00'

Wannemacher Jensen Architects, Inc.  
 132 Mirror Lake Drive North Unit 301  
 St. Petersburg, Florida 33701-3214  
 (727) 822-5566 fax (727) 822-5475  
 www.wjarc.com  
 AR94244  
 ©Wannemacher Jensen Architects, Inc.





**RENDERINGS**

12-13-2021  
 MIAMI BEACH HISTORIC PRESERVATION BOARD - FINAL SUBMITTAL

**CITY OF MIAMI BEACH, OFFICE OF CAPITAL IMPROVEMENT  
 PROJECTS-FIRE STATION #01**

833 6TH STREET MIAMI BEACH, FL 33139



Digitally signed  
 by Jason Jensen  
 Date:  
 2021.12.20  
 10:10:46 -05'00'

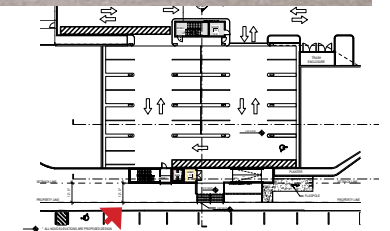
**KEY PLAN**



Wannemacher Jensen Architects, Inc.  
 132 Mirror Lake Drive North Unit 301  
 St. Petersburg, Florida 33701-3214  
 (727) 822-5566 fax (727) 822-5475  
 www.wjarc.com  
 AR94244  
 ©Wannemacher Jensen Architects, Inc.







**RENDERINGS**

12-13-2021  
 MIAMI BEACH HISTORIC PRESERVATION BOARD - FINAL SUBMITTAL

**CITY OF MIAMI BEACH, OFFICE OF CAPITAL IMPROVEMENT  
 PROJECTS-FIRE STATION #01**

833 6TH STREET MIAMI BEACH, FL 33139



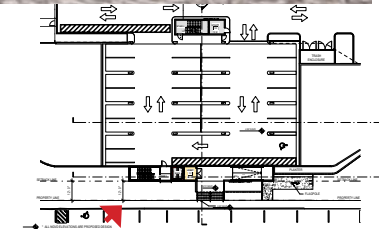
Digitally signed  
 by Jason Jensen  
 Date:  
 2021.12.20  
 10:10:46 -05'00'

**KEY PLAN**



Wannemacher Jensen Architects, Inc.  
 132 Mirror Lake Drive North Unit 301  
 St. Petersburg, Florida 33701-3214  
 (727) 822-5566 fax (727) 822-5475  
 www.wjarc.com  
 AR94244  
 ©Wannemacher Jensen Architects, Inc.





**RENDERINGS**

12-13-2021  
 MIAMI BEACH HISTORIC PRESERVATION BOARD - FINAL SUBMITTAL

**CITY OF MIAMI BEACH, OFFICE OF CAPITAL IMPROVEMENT  
 PROJECTS-FIRE STATION #01**

833 6TH STREET MIAMI BEACH, FL 33139



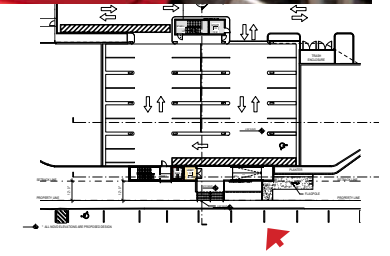
Digitally signed  
 by Jason Jensen  
 Date:  
 2021.12.20  
 10:10:46 -05'00'

**KEY PLAN**



Wannemacher Jensen Architects, Inc.  
 132 Mirror Lake Drive North Unit 301  
 St. Petersburg, Florida 33701-3214  
 (727) 822-5566 fax (727) 822-5475  
 www.wjarc.com  
 AR94244  
 ©Wannemacher Jensen Architects, Inc.





KEY PLAN



RENDERINGS

12-13-2021  
 MIAMI BEACH HISTORIC PRESERVATION BOARD - FINAL SUBMITTAL

CITY OF MIAMI BEACH, OFFICE OF CAPITAL IMPROVEMENT  
 PROJECTS-FIRE STATION #01

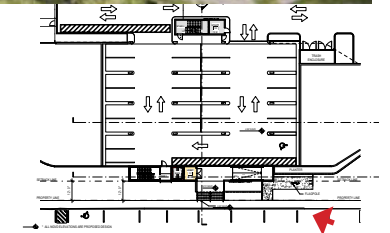
833 6TH STREET MIAMI BEACH, FL 33139



Digitally signed  
 by Jason Jensen  
 Date:  
 2021.12.20  
 10:10:46 -05'00'

Wannemacher Jensen Architects, Inc.  
 132 Mirror Lake Drive North Unit 301  
 St. Petersburg, Florida 33701-3214  
 (727) 822-5566 fax (727) 822-5475  
 www.wjarc.com  
 AR94244  
 ©Wannemacher Jensen Architects, Inc.





**RENDERINGS**

12-13-2021  
 MIAMI BEACH HISTORIC PRESERVATION BOARD - FINAL SUBMITTAL

**CITY OF MIAMI BEACH, OFFICE OF CAPITAL IMPROVEMENT  
 PROJECTS-FIRE STATION #01**

833 6TH STREET MIAMI BEACH, FL 33139



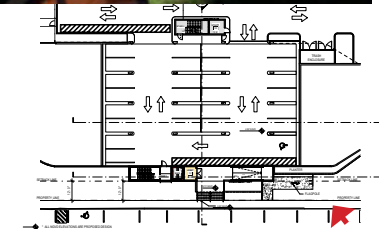
Digitally signed  
 by Jason Jensen  
 Date:  
 2021.12.20  
 10:10:46 -05'00'

**KEY PLAN**



Wannemacher Jensen Architects, Inc.  
 132 Mirror Lake Drive North Unit 301  
 St. Petersburg, Florida 33701-3214  
 (727) 822-5566 fax (727) 822-5475  
 www.wjarc.com  
 AR94244  
 ©Wannemacher Jensen Architects, Inc.





**RENDERINGS**

12-13-2021  
 MIAMI BEACH HISTORIC PRESERVATION BOARD - FINAL SUBMITTAL

**CITY OF MIAMI BEACH, OFFICE OF CAPITAL IMPROVEMENT  
 PROJECTS-FIRE STATION #01**

833 6TH STREET MIAMI BEACH, FL 33139



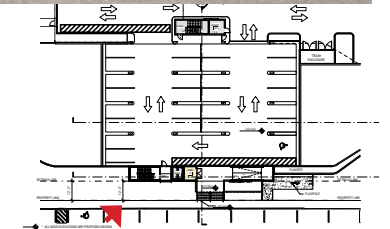
Digitally signed  
 by Jason Jensen  
 Date:  
 2021.12.20  
 10:10:46 -05'00'

**KEY PLAN**



Wannemacher Jensen Architects, Inc.  
 132 Mirror Lake Drive North Unit 301  
 St. Petersburg, Florida 33701-3214  
 (727) 822-5566 fax (727) 822-5475  
 www.wjarc.com  
 AR94244  
 ©Wannemacher Jensen Architects, Inc.





**RENDERINGS**

12-13-2021  
 MIAMI BEACH HISTORIC PRESERVATION BOARD - FINAL SUBMITTAL

**CITY OF MIAMI BEACH, OFFICE OF CAPITAL IMPROVEMENT  
 PROJECTS-FIRE STATION #01**

833 6TH STREET MIAMI BEACH, FL 33139



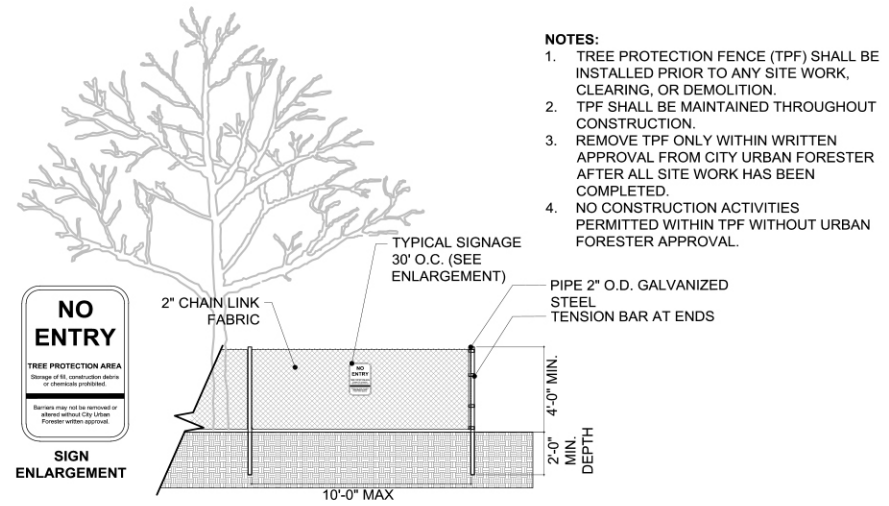
Digitally signed  
 by Jason Jensen  
 Date:  
 2021.12.20  
 10:10:46 -05'00'

**KEY PLAN**



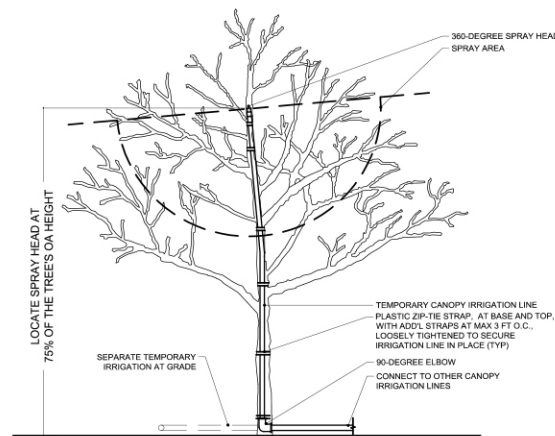
Wannemacher Jensen Architects, Inc.  
 132 Mirror Lake Drive North Unit 301  
 St. Petersburg, Florida 33701-3214  
 (727) 822-5566 fax (727) 822-5475  
 www.wjarc.com  
 AR94244  
 ©Wannemacher Jensen Architects, Inc.





- NOTES:**
1. TREE PROTECTION FENCE (TPF) SHALL BE INSTALLED PRIOR TO ANY SITE WORK, CLEARING, OR DEMOLITION.
  2. TPF SHALL BE MAINTAINED THROUGHOUT CONSTRUCTION.
  3. REMOVE TPF ONLY WITHIN WRITTEN APPROVAL FROM CITY URBAN FORESTER AFTER ALL SITE WORK HAS BEEN COMPLETED.
  4. NO CONSTRUCTION ACTIVITIES PERMITTED WITHIN TPF WITHOUT URBAN FORESTER APPROVAL.

**1 TREE & PALM PROTECTIVE / FENCING BARRICADE DETAIL** NTS



- NOTES:**
1. CONTRACTOR SHALL INSTALL ALL CANOPY IRRIGATION LINES AS A SEPARATE ZONE(S) SO THEY MAY BE CONTROLLED SEPARATELY FROM ALL OTHER IRRIGATION ZONES AND SO THEY MAY BE REMOVED, IF NEEDED, WITHOUT IMPACTING OTHER IRRIGATION ZONES FEEDING ANY AT-GRADE IRRIGATION.
  2. CANOPY IRRIGATION INSTALLATION SHALL REQUIRE APPROVAL BY THE CITY'S URBAN FORESTER (OR DESIGNEE) UPON INSTALLATION.

**2 RELOCATED TREE - TEMPORARY CANOPY IRRIGATION DETAIL** NTS

**PRESERVATION NOTES:**

1. THE CONTRACTOR SHALL VERIFY THE CONDITION AND TAG ALL MATERIAL TO BE RELOCATED OR REMOVED PRIOR TO ANY CONSTRUCTION ACTIVITY AND SHALL BE VERIFIED BY THE CITY'S URBAN FORESTER.
2. CONTRACTOR SHALL BE REQUIRED TO STAKE ALL WALKWAYS AND IDENTIFY ALL TREES WITHIN 5 FEET OF PROPOSED IMPROVEMENTS THAT WILL REQUIRE ROOT-PRUNING FOR COORDINATION WITH THE CITY OF MIAMI BEACH'S URBAN FORESTRY DEPARTMENT PRIOR TO ANY EXCAVATION OR DEMOLITION.
3. ALL TREES NOTED ON THE PLAN TO BE RELOCATED SHALL BE ROOT PRUNED AND MOVED PRIOR TO INITIATING ANY CLEARING OF THE SITE. ALL TREES TO BE RELOCATED SHALL BE ROOT PRUNED A MINIMUM OF 45 DAYS PRIOR TO BEING RELOCATED. ALL ROOT PRUNING SHALL BE PERFORMED BY A CERTIFIED ARBORIST. MINIMAL TREE BRANCH AND CANOPY TRIMMING SHALL BE DONE. ALL ROOT PRUNING SHALL BE DONE BY HAND DIGGING. NO MECHANICAL EQUIPMENT SHALL BE USED WHICH WOULD DAMAGE THE ROOT SYSTEM (SUCH AS A BACKHOE). THE LANDSCAPE CONTRACTOR SHALL INCLUDE IN THE BID A WATERING CONTRACT FOR THE ROOT PRUNED TREES TO INSURE THAT THEY ARE ADEQUATELY WATERED THREE TIMES A WEEK FOR A MINIMUM OF A SIX WEEK PERIOD.
4. THE CONTRACTOR IS RESPONSIBLE FOR PRESERVING AND PROTECTING ALL EXISTING TREES NOTED ON THIS PLAN BY USING 4 FOOT HIGH CONTINUOUS CHAIN LINK FENCE AS A TEMPORARY BARRIER CONSISTENT WITH THE PROTECTIVE FENCING BARRICADE DETAIL, WHERE PROVIDED.
5. EXACT LOCATIONS FOR FENCING SHALL BE MADE IN THE FIELD BY A CERTIFIED ARBORIST IN ORDER TO DETERMINE THE ACTUAL DRIP LINE LOCATIONS FOR THE EXISTING TREES NOTED TO REMAIN.
6. CONSULT THE OWNER DESIGNATED REPRESENTATIVE AND REMOVE AGREED-ON ROOTS AND BRANCHES WHICH INTERFERE WITH CONSTRUCTION WORK AREA PRIOR TO INITIATING ANY SITE CLEARING.
7. CONTRACTOR SHALL EMPLOY AN ISA-CERTIFIED ARBORIST TO REMOVE ANY BRANCHES AND TREAT ANY CUTS.
8. PRESERVED TREES SHALL BE BARRICADED BEFORE AND DURING CONSTRUCTION. IF DURING THE COURSE OF CONSTRUCTION ANY OF THE PROTECTED VEGETATION DIES, IT SHALL BE REPLACED AS REQUIRED BY THE LOCAL JURISDICTION BY THE CONTRACTOR WITH EQUAL SIZE AND CALIPER. THE TREES, SHRUBS AND GROUND-COVERS SHALL BE INCLUDED WITHIN THE PRESERVATION AREAS AND SHALL BE RETAINED. WHERE SUPPLEMENTAL LANDSCAPING INFRINGES ON THIS AREA, DISTURBANCE SHALL BE MINIMIZED.
9. CRITICAL ROOT ZONES (CRZ) AND TREE PROTECTION ZONES (TPZ) SHALL BE DEFINED BY A CERTIFIED ARBORIST AND SHALL BE CONSISTENT WITH ANY LOCAL REGULATIONS THAT MAY DEFINE THEIR EXTENTS.
10. PROTECT ROOT ZONES OF TREES AND PLANTS TO REMAIN. DO NOT ALLOW TRAFFIC AND PARKING WITHIN ANY PROTECTED AREAS. DO NOT STORE MATERIALS OR PRODUCTS NEAR TREES. PREVENT DUMPING OF REFUSE OR CHEMICALLY INJURIOUS MATERIALS OR LIQUIDS NEAR PLANTS.
11. CONTRACTOR SHALL PREVENT PUDDLING OR CONTINUOUS RUNNING WATER THAT MAY ERODE OR IMPACT CONSTRUCTION SITE AND PLANTING AREAS.
12. CONTRACTOR SHALL CAREFULLY SUPERVISE ALL WORK TO PREVENT DAMAGE TO EXISTING VEGETATION.
13. CONTRACTOR SHALL COMPLETELY REMOVE BARRICADES WHEN CONSTRUCTION HAS PROGRESSED TO THE POINT THAT THEY ARE NO LONGER NEEDED AND WHEN APPROVED BY THE CLIENT OR CLIENT'S REPRESENTATIVE.
14. CONTRACTOR SHALL INCLUDE A FOLLOW-UP MAINTENANCE PLAN FOR A PERIOD OF 1 YEAR TO PREVENT RE-INVASION OF INVASIVE VEGETATION.
15. CONTRACTOR SHALL BE RESPONSIBLE FOR COORDINATING WITH CITY REPRESENTATIVE TO CONDUCT A WALK-THROUGH TO ASSESS AND DETERMINE SPECIAL PRESERVATION ACTIVITIES FOR SENSITIVE HABITAT PLANTING, OR RELOCATION OF THESE, PRIOR TO COMMENCEMENT OF CONSTRUCTION.
16. CONTRACTOR IS ADVISED THAT ALL REQUIREMENTS AND STANDARDS EXPRESSED IN THE CITY OF MIAMI BEACH'S CODE OF GENERAL ORDINANCES, DIV. 2 TREE PRESERVATION AND PROTECTION SHALL BE ABIDED BY WITHOUT EXCEPTION. CONTRACTOR SHALL BE RESPONSIBLE FOR ADHERING TO ALL CITY-STANDARD PROCEDURES IN THE REMOVAL, RELOCATION AND PRESERVATION OF ANY AND ALL TREES.
17. THE CONTRACTOR SHALL MAKE ALL ATTEMPTS TO, WHERE REASONABLE, PRUNE AND REMOVE ONLY THOSE PORTIONS OF EXISTING CANOPIES IN CONFLICT WITH PROPOSED IMPROVEMENTS IN A EFFORT TO KEEP AND PROTECT AS MUCH OF THE EXISTING CANOPY AS POSSIBLE. ALL PRUNING SHALL BE SUPERVISED AND CONDUCTED BY AN ISA-CERTIFIED ARBORIST.
18. CONTRACTOR SHALL INCLUDE IN SCOPE OF WORK AN ASSESSMENT BY AN ISA-CERTIFIED ARBORIST OF ALL EXISTING TREES TO BE PRESERVED THROUGH SELECTIVE PRUNING.

**TREE RELOCATION NOTES:**

1. ALL ROOT-PRUNING, UP-ROOTING AND RESETTING OF ALL TREES TO BE RELOCATED SHALL BE SUPERVISED AND DIRECTED BY A CERTIFIED ARBORIST AT ALL TIMES, WITHOUT

**EXCEPTION:**

2. CONTRACTOR SHALL RESET AND/OR REPLANT ANY TREE IDENTIFIED FOR RELOCATION ON THE DAY OF IT BEING UP-ROOTED AND PRIOR TO CLOSING OUT THE SITE TO CONSTRUCTION ACTIVITIES ON A DAILY BASIS. CONTRACTOR SHALL PROTECT ALL ROOTBALLS FROM DIRECT SUN EXPOSURE AND SHALL KEEP THEM HYDRATED CONSISTENT WITH HORTICULTURAL BEST PRACTICES AND STANDARDS.
3. CONTRACTOR SHALL PROVIDE TREE PROTECTION FENCING AND/OR BARRICADES CONSISTENT WITH THE CORRESPONDING BARRICADE DETAIL FOR ALL TREES TO BE RELOCATED DURING ON-SITE CONSTRUCTION ACTIVITIES FOR ALL TREES PENDING RELOCATION AND THOSE THAT HAVE BEEN RELOCATED.
4. ALL TREES AND PALMS SHALL BE PLACED TO ENSURE CANOPY AND FRUIT DROPS OCCUR WITHIN A SAFE DISTANCE FREE OF WALKWAYS OR PUBLIC USE AREAS.
5. CONTRACTOR SHALL WARRANT THE SURVIVAL OF ALL TREES BEING RELOCATED FOR A PERIOD OF 2 YEARS. CONTRACTOR SHALL PROVIDE AN ALLOWANCE FUND TO MITIGATE ALL TREES THAT DO NOT SURVIVE RELOCATION CONSISTENT WITH ANY MITIGATION REQUIREMENTS ADOPTED BY THE CITY OF MIAMI BEACH. FUND AMOUNT TO BE DETERMINED BY THE CITY.
6. IRRIGATION MUST BE PRESENT AND APPLIED EFFECTIVELY FOR TWO TO FOUR WEEKS PRIOR TO ROOT PRUNING, THROUGH THE PERIOD OF ROOT PRUNING, AND AFTER ROOT PRUNING AND TRANSPLANTATION UNTIL THE TREE HAS BEEN COMPLETELY RE-ESTABLISHED AT THE NEW PLANTING LOCATION. IRRIGATION SHALL BE OPERATED AUTOMATICALLY WITH WATER BEING APPLIED DIRECTLY TO AND JUST OUTSIDE OF THE REMAINING INTACT ROOT SYSTEM. WATERING FREQUENCY SHALL BE SUCH SO AS TO ENSURE THAT FREE WATER IS AVAILABLE TO THE ROOT SYSTEM AT ALL TIMES. ANY TEMPORARY DISRUPTION IN AUTOMATIC OPERATION SHALL BE SUPPLEMENTED BY HAND WATERING.
7. THERE SHOULD BE NO CANOPY PRUNING OR A MINIMUM OF CANOPY PRUNING BEFORE OR AFTER ROOT PRUNING. DEAD, DISEASED OR DAMAGED BRANCHES SHALL BE PRUNED AT THIS TIME.
8. THE ROOT SYSTEM OF A TREE TO BE RELOCATED SHALL BE WELL-WATERED BEFORE THE TREE IS DUG AND LIFTED TO ENSURE THAT THE TREE IS PROPERLY HYDRATED, AND TO IMPROVE COHESIVENESS OF THE ROOT BALL.
9. ALL TRANSPLANTING AND RELOCATING OF TREES OR PALMS SHALL BE DONE IN COMPLIANCE WITH STANDARDS SET FORTH IN THE MOST RECENTLY PUBLISHED EDITION OF THE AMERICAN NATIONAL STANDARDS INSTITUTE ANSI A-300 STANDARDS. THIS REQUIREMENT INCLUDES ALL PROCEDURES, TECHNIQUES, STANDARDS FOR MINIMUM ROOT BALL SIZE, AND ANY OTHER STANDARDS INCLUDED IN ANSI A-300 STANDARDS.
10. RELOCATED TREES SHALL BE BRACED IN SUCH A FASHION AS TO NOT SCAR PENETRATE PERFORATE OR OTHERWISE INFLICT DAMAGE TO THE TREE.
11. CONTRACTOR SHALL INCLUDE IRRIGATION OF CANOPIES FOR ALL TRANSPLANTED TREES. WATERING SHALL BE CONDUCTED 2 TIMES PER WEEK PER TREE, FOR A PERIOD OF 4 WEEKS MINIMUM.

**TREE DISPOSITION NOTES**

10-11-2021  
MIAMI BEACH HISTORIC PRESERVATION BOARD - FINAL SUBMITTAL

**CITY OF MIAMI BEACH, OFFICE OF CAPITAL IMPROVEMENT  
PROJECTS-FIRE STATION #01**

833 6TH STREET MIAMI BEACH, FL 33139

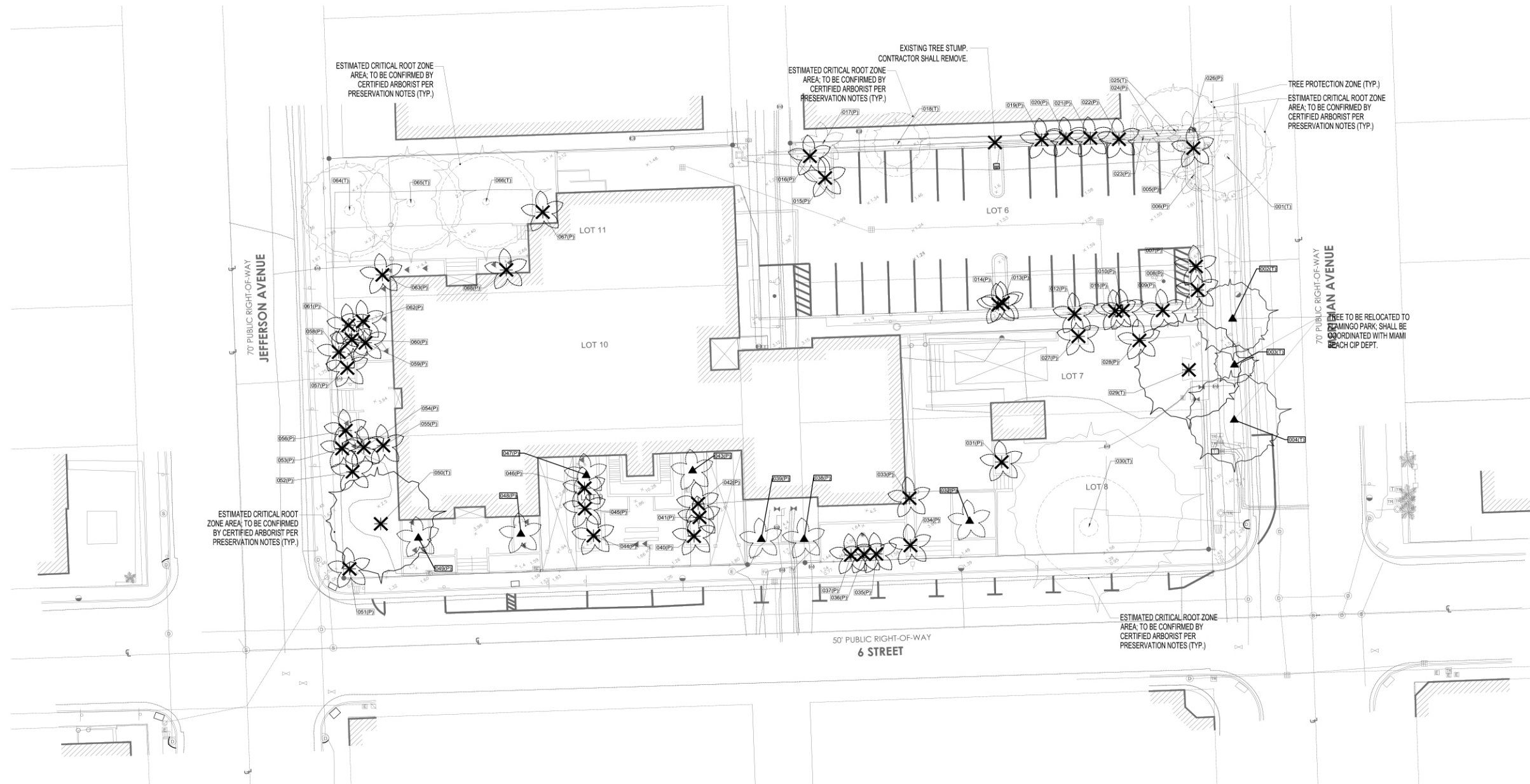
Wannemacher Jensen Architects, Inc.  
132 Mirror Lake Drive North Unit 301  
St. Petersburg, Florida 33701-3214  
(727) 822-5566 fax (727) 822-5475  
www.wjarc.com  
AR94244  
©Wannemacher Jensen Architects, Inc.



TREE DISPOSITION SCHEDULE																	
TREE NO.	BOTANICAL NAME	COMMON NAME	NATIVE	SIZE					ACTION	CONDITION	MITIGATION REQUIRED?	NOTES	DBH OF INDIVIDUAL TRUNKS				
				TRUNK#	DBH (IN)	HT (FT)	SPRD (FT)	AREA (SF)					#1	#2	#3	#4	#5
001 (T)	Swietenia mahagoni	Mahogany Tree	Y	1	19"	30'	36'	1,018 Sq. Ft.	Preserve & Protect	Good		Slight Lean favoring sidewalk,	18.9"				
002 (T)	Swietenia mahagoni	Mahogany Tree	Y	1	18"	35'	36'		To Be Relocated	Good		Root growth under sidewalk with one-sided canopy	18.1"				
003 (T)	Swietenia mahagoni	Mahogany Tree	Y	1	7"	20'	15'	177 Sq. Ft.	To Be Relocated	Fair		Die back on canopy, unstable trunk structure and one-sided canopy growth	7.3"				
004 (T)	Swietenia mahagoni	Mahogany Tree	Y	1	21.5"	35'	40'		To Be Relocated	Good		Root growth under sidewalk, may be difficult to relocate	21.4"				
005 (P)	Livistona chinensis	Chinese Fan Palm		1	9.5"	12' CT	10'		Remove	Good	Y	Slight narrowing of trunk at top, minimal trunk cavities	9.3"				
006 (P)	Livistona chinensis	Chinese Fan Palm		1	10.5"	13' CT	10'		Preserve & Protect	Good		Slight S-Curve to trunk, concrete at base, minimal trunk cavities	10.4"				
007 (P)	Livistona chinensis	Chinese Fan Palm		1	9.5"	13' CT	10'		Remove	Good	Y	Slight S-curve to trunk, complications with proposed sight-triangle requirements	9.5"				
008 (P)	Livistona chinensis	Chinese Fan Palm		1	9.5"	10' CT	10'		Remove	Fair		Curve to trunk at top, slight narrowing of trunk in middle, complications with proposed sight-triangle req.	9.5"				
009 (P)	Thrinax radiata	Florida Thatch Palm	Y	1	3.5"	11' CT	7'		Remove	Fair		Slight S-Curve to trunk, slight lean of trunk structure with exposed roots at base and narrowing	3.5"				
010 (P)	Thrinax radiata	Florida Thatch Palm	Y	1	3.5"	11' CT	7'		Remove	Fair		Slight lean and curve	3.4"				
011 (P)	Thrinax radiata	Florida Thatch Palm	Y	1	3.5"	10' CT	7'		Remove	Fair		Slight narrowing of trunk at base	3.5"				
012 (P)	Thrinax radiata	Florida Thatch Palm	Y	1	4"	12' CT	7'		Remove	Fair	Y		4.2"				
013 (P)	Thrinax radiata	Florida Thatch Palm	Y	1	4.0"	10' CT	7'		Remove	Fair			3.8"				
014 (P)	Thrinax radiata	Florida Thatch Palm	Y	1	3.5"	8' CT	7'		Remove	Fair			3.7"				
015 (P)	Livistona chinensis	Chinese Fan Palm		1	9"	11' CT	10'		Remove	Fair		S-Curve to trunk	9.0"				
016 (P)	Livistona chinensis	Chinese Fan Palm		1	10.0"	13' CT	10'		Remove	Good	Y	S-Curve to trunk	10.0"				
017 (P)	Adonidia merrillii	Christmas Palm		1	6.0"	10' CT	14'		Preserve & Protect	Good		Trunk abutting fence line	6.0"				
018 (T)	Coccoloba uvifera	Seagrape	Y	7	34.5"	20'	18'	254 Sq. Ft.	Preserve & Protect	Good		Not a good candidate for relocation; sucker growth, intertwined and rubbing branches	6.5"	3.9"	3.4"	6.4"	14.7"
019 (P)	Archontophoenix alexandrae	Alexander Palm	Y	1	3.5"	21' CT	10'		Remove	Fair	Y		3.6"				
020 (P)	Thrinax radiata	Florida Thatch Palm	Y	1	5"	3' CT	6'		Remove	Good							
021 (P)	Thrinax radiata	Florida Thatch Palm	Y	1	5"	3' CT	6'		Remove	Good							
022 (P)	Thrinax radiata	Florida Thatch Palm	Y	1	5"	3' CT	6'		Remove	Good							
023 (P)	Adonidia merrillii	Christmas Palm		1	5"	18' CT	10'		Preserve & Protect	Fair			5.2"				
024 (P)	Adonidia merrillii	Christmas Palm		1	5.0"	16' CT	10'		Preserve & Protect	Fair			5.2"				
025 (T)	Calophyllum brasiliense	Brazilian Beautyleaf	Y	1	23"	24'	30'		Preserve & Protect	Fair		Included bark, poor structure, severed trunk	23.0"				
026 (P)	Sabal palmetto	Cabbage Palm	Y	1	10.5"	33' CT	14'		Preserve & Protect	Fair			10.6"				
027 (P)	Sabal palmetto	Cabbage Palm	Y	1	10"	20'	10'		Remove	Fair	Y	Trunk damage covered with plastic	10.1"				
028 (P)	Sabal palmetto	Cabbage Palm	Y	1	11.5"	24' CT	10'		Remove	Good	Y		11.1"				
029 (T)	Swietenia mahagoni	Mahogany Tree	Y	1	15.5"	35'	40'		Remove	Fair	Y	Root growth under PIP playground, dieback on trees with severe canopy loss causing one-sided growth	15.5"				
030 (T)	Conocarpus erectus	Green Buttonwood	Y	3	77.9"	30'	65'		Preserve & Protect	Fair		Heritage Tree	22.5"	25.5"	29.9"		
031 (P)	Thrinax radiata	Florida Thatch Palm	Y	1	6.0"	5' CT	7'		Remove	Fair		Stunted growth from elevated planter width, understory dieback	6.0"				
032 (P)	Phoenix canariensis	Canary Date Palm	Y	1	44"	7' CT	18'		To Be Relocated	Good			46.2"				
033 (P)	Thrinax radiata	Florida Thatch Palm	Y	1	5.0"	13' CT	10'		Remove	Fair	Y	Small planting area, not sufficient nutrient levels, exposed rootball	5.2"				
034 (P)	Coccothrinax argentata	Florida Silver Palm	Y	1	4.0"	13' CT	10'		Remove	Good	Y	Difficult to relocate	3.9"				
035 (P)	Thrinax radiata	Florida Thatch Palm	Y	1	3"	3' CT	6'		Remove	Good							
036 (P)	Thrinax radiata	Florida Thatch Palm	Y	1	4.3"	7' CT	6'	28 Sq. Ft.	Remove	Good			4.3"				
037 (P)	Thrinax radiata	Florida Thatch Palm	Y	1	4.1"	3' CT	6'	28 Sq. Ft.	Remove	Good							
038 (P)	Phoenix canariensis	Canary Date Palm		1	36.5"	13' CT	10'		To Be Relocated	Good			36.5"				
039 (P)	Phoenix canariensis	Canary Date Palm		1	36.7"	13' CT	10'		To Be Relocated	Good			36.7"				
040 (P)	Phoenix roebelenii	Pygmy Date Palm		2	7.4"	7' CT	15'		Remove	Good			3.7"	3.7"			
041 (P)	Phoenix roebelenii	Pygmy Date Palm		2	7.4"	7' CT	15'		Remove	Good			3.7"	3.7"			
042 (P)	Phoenix roebelenii	Pygmy Date Palm		2	7.4"	7' CT	15'		Remove	Good			3.7"	3.7"			
043 (P)	Phoenix dactylifera	Medjool Date Palm		1	12.0"	14' CT	7'		To Be Relocated	Good		Exposed rootball and buildup around base	12.0"				
044 (P)	Phoenix roebelenii	Pygmy Date Palm		3	11.1"	7' CT	13'		Remove	Good			3.7"	3.7"	3.7"		
045 (P)	Phoenix roebelenii	Pygmy Date Palm		2	7.4"	7' CT	15'		Remove	Good			3.7"	3.7"			
046 (P)	Phoenix roebelenii	Pygmy Date Palm		2	7.4"	7' CT	12'		Remove	Good			3.7"	3.7"			
047 (P)	Phoenix dactylifera	Medjool Date Palm		1	13.2"	15' CT	7'		To Be Relocated	Good		Exposed rootball and buildup around base	13.2"				
048 (P)	Phoenix canariensis	Canary Date Palm		1	36.5"	6' CT	10'		To Be Relocated	Good			36.5"				
049 (P)	Phoenix canariensis	Canary Date Palm		1	36.7"	5' CT	10'		To Be Relocated	Good			36.7"				
050 (T)	Lysiloma sabicu	Sabicu Tamarind	Y	1	32.5"	32'	40'	1,257 Sq. Ft.	Remove	Good		Included bark	32.5"				
051 (P)	Sabal palmetto	Cabbage Palm	Y	1	11.1"	40' CT	8'		Remove	Good		Narrowing of trunk towards top	11.1"				
052 (P)	Sabal palmetto	Cabbage Palm	Y	1	13.1"	14' CT	10'		Remove	Good	Y		13.1"				
053 (P)	Sabal palmetto	Cabbage Palm	Y	1	8.7"	14' CT	10'		Remove	Good	Y		8.7"				
054 (P)	Sabal palmetto	Cabbage Palm	Y	1	7.7"	14' CT	10'		Remove	Good	Y		7.7"				
055 (P)	Sabal palmetto	Cabbage Palm	Y	1	12.6"	27' CT	10'		Remove	Good	Y		12.6"				
056 (P)	Sabal palmetto	Cabbage Palm	Y	1	9.3"	14'	10'		Remove	Good	Y		9.3"				
057 (P)	Sabal palmetto	Cabbage Palm	Y	1	9.0"	13' CT	10'		Remove	Good	Y						
058 (P)	Sabal palmetto	Cabbage Palm	Y	1	10.4"	13' CT	10'		Remove	Good	Y						
059 (P)	Sabal palmetto	Cabbage Palm	Y	1	7.2"	17' CT	10'		Remove	Good	Y						
060 (P)	Sabal palmetto	Cabbage Palm	Y	1	10.3"	13' CT	10'		Remove	Good	Y						
061 (P)	Sabal palmetto	Cabbage Palm	Y	1	9.5"	13' CT	10'		Remove	Good	Y						
062 (P)	Sabal palmetto	Cabbage Palm	Y	1	10.1"	13' CT	10'		Remove	Good	Y						
063 (P)	Archontophoenix alexandrae	Alexander Palm	Y	2	6.6"	25' CT	7'		Remove	Good	Y		4.1"	2.5"			
064 (T)	Lysiloma latissiliquum	Wild Tamarind	Y	2	43.1"	32'	35'	962 Sq. Ft.	Preserve & Protect	Good							
065 (T)	Lysiloma latissiliquum	Wild Tamarind	Y	2	33.3"	30'	40'	1,257 Sq. Ft.	Preserve & Protect	Good				19.7"	13.6"		
066 (T)	Lysiloma latissiliquum	Wild Tamarind	Y	1	28.3"	30'	40'	1,257 Sq. Ft.	Preserve & Protect	Good				28.3"			
067 (P)	Phoenix reclinata	Wild Date Palm		3	14.7"	27' CT	15'		Remove	Fair	Y	Abundant sucker growth	4.9"	5.0"	4.8"		
068 (P)	Archontophoenix alexandrae	Alexander Palm		1	3.2"	25' CT	8'		Remove	Good	Y		3.2"				

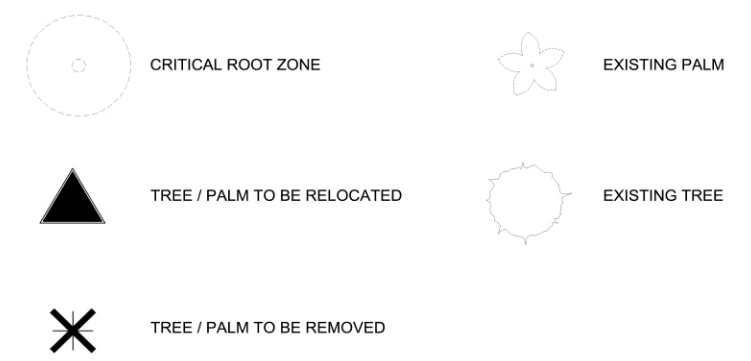
NOTE: ALL TREES IDENTIFIED AS "TO BE RELOCATED" SHALL BE RELOCATED OFF-SITE TO FLAMINGO PARK. ALL TREE RECEPTOR LOCATIONS SHALL BE COORDINATED BY CITY STAFF PRIOR TO RELOCATION. TREE RECEPTOR PLANS ARE N.I.C. AND SHALL BE BY OTHERS.





**1 TREE DISPOSITION PLAN**

1:20



**TREE DISPOSITION PLAN**

10-11-2021  
 MIAMI BEACH HISTORIC PRESERVATION BOARD - FINAL SUBMITTAL

**CITY OF MIAMI BEACH, OFFICE OF CAPITAL IMPROVEMENT  
 PROJECTS-FIRE STATION #01**

833 6TH STREET MIAMI BEACH, FL 33139

Wannemacher Jensen Architects, Inc.  
 132 Mirror Lake Drive North Unit 301  
 St. Petersburg, Florida 33701-3214  
 (727) 822-5566 fax (727) 822-5475  
 www.wjarc.com  
 AR94244  
 ©Wannemacher Jensen Architects, Inc.



**GENERAL PLANTING NOTES**

- SEE TYPICAL PLANTING DETAILS SHEET FOR ADDITIONAL PLANTING SPECIFICATIONS.
- LANDSCAPE CONTRACTOR TO PROVIDE AN AUTOMATIC IRRIGATION SYSTEM GUARANTEEING 100% COVERAGE WHERE CALLED FOR & MAINTAINING A 50% MIN. OVERLAP TO ALL LANDSCAPED AREAS. THE IRRIGATION SYSTEM SHALL HAVE A RAIN SENSOR DEVICE AS REQUIRED. IRRIGATION SHALL ENSURE NO OVERSPRAY ONTO SIDEWALKS OR HARDSCAPE AREAS.
- ALL PLANT MATERIAL SHALL BE FLORIDA NO. 1 QUALITY OR BETTER. ALL PLANTS SHALL BE TRUE TO THE GROWTH BAIT OF THE SPECIES, AND ARE TO BE FULLY ROOTED IN THE CONTAINER, HEALTHY, VIGOROUS, WELL-BRANCHED, AND DENSELY FOLIATED. PLANTS SHALL BE FREE FROM PHYSICAL DAMAGE, OR CONDITIONS THAT WOULD INTERFERE WITH THRIVING GROWTH, AND FREE OF DISEASE, INSECTS, OR INSECT EGGS AND LARVAE. THE CITY MAY INSPECT ALL PLANTS SUPPLIED BY THE CONTRACTOR AND MAY REJECT PLANTS THAT DO NOT MEET THESE SPECIFICATIONS.
- PIONEER SPECIES SHALL BE INSTALLED WITH THE TOP OF THE ROOT-BALL NO LESS THAN SIX INCHES BELOW FINISH GRADE. FERTILIZER MUST BE PLACED INTO THE HOLE BEFORE THE PLANT IS INTRODUCED. PLANTS MUST BE WATERED IMMEDIATELY TO SET THE ROOTS BEFORE BACKFILLING THE HOLE TO GRADE. NO HYDROPHILIC GELS MAY BE USED.
- STRAND SPECIES AND SAW PALMETTOS SHALL BE TREATED AFTER DELIVERY AND PRIOR TO INSTALLATION WITH APPLICATION OF VAPOR GUARD ANTI-TRANSPIRANT OR APPROVED EQUIVALENT, AT THE MANUFACTURER'S RECOMMENDED APPLICATION RATE. SAW PALMETTOS AND STRAND SPECIES SHALL BE INSTALLED WITH THE TOP OF THE ROOT-BALL NO LESS THAN FOUR INCHES BELOW FINISH GRADE. PLANTS SHALL BE REMOVED FROM THE CONTAINER BY INVERTING THE CONTAINER AND SUPPORTING THE ROOT-BALL AS THE CONTAINER IS PULLED OFF. POTS SHOULD BE CUT AS NECESSARY TO MINIMIZE DISTURBANCE OF ALL FRAGILE ROOTS. PULLING THE PLANTS OUT OF THE CONTAINERS BY THE STEMS WILL BE CAUSE FOR REJECTION OF THE PLANT. AFTER DIGGING A HOLE TO THE NECESSARY DEPTH, ADD ONE HALF OF THE FERTILIZER AND INCORPORATE IT INTO THE SOIL BEFORE INSERTING THE PLANT. PLANTS SHALL BE PLACED IMMEDIATELY INTO THE HOLE ONCE REMOVED FROM POTS AND ROOT-BALL SHALL NOT BE EXPOSED TO UNREASONABLE DIRECT SUNLIGHT. ONCE PLANT, TWIST THE ROOT-BALL TO SEAT IT BEFORE BACKFILLING. AFTER BACKFILLING TO COVER TWO THIRDS OF THE ROOT-BALL, ADD THE REMAINING FERTILIZER IN A RING BEFORE COMPLETELY FILLING THE PLANTING HOLE.
- ALL LANDSCAPE MATERIALS SHALL BE FERTILIZED AT THE TIME OF INSTALLATION WITH EVERRIS SUNCOAT 16-9-12 W MINORS 90-DAY RELEASE OR A PROPOSED EQUIVALENT, IF APPROVED BY THE CITY. SEVEN (7) GRAMS (1 TEASPOON) SHALL BE PLACED INTO THE PLANTING HOLE OF PIONEER SPECIES BEFORE INITIAL WATERING. STRAND ZONE SPECIES SHALL BE FERTILIZED AT THE TIME OF PLANTING BY INCLUSION OF 210 GRAMS (ONE-HALF CUP), ONE-HALF INTO THE PLANTING HOLE BEFORE INSTALLATION OF THE PLANT AND ONE-HALF DISTRIBUTED IN A RING AROUND THE NURSERY ROOT-BALL AFTER BACKFILLING THE HOLE TO COVER TWO-THIRDS OF THE ROOT-BALL'S HEIGHT.
- CONTRACTOR SHALL GUARANTEE ALL PLANTS, TREES AND PALMS IN ACCORDANCE TO THE FOLLOWING TERMS. PLANTS NOT LIVING AT THE END OF 30 DAYS SHALL BE REJECTED AND SHALL BE REPLACED. THE CONTRACTOR SHALL GUARANTEE THAT AT LEAST 90% OF ALL PIONEER ZONE SPECIES AND DIVERSITY SPECIES, AND SEPARATELY 90% OF ALL STRAND ZONE SPECIES AND SAW PALMETTOS SURVIVE AND ARE IN GOOD, HEALTHY CONDITION FOR A PERIOD OF ONE (1) YEAR FROM THE TIME OF ACCEPTANCE. PLANTS SHALL BE DEEMED SURVIVING IF THEY PRESENT VIGOROUS NEW LEAF GROWTH AND INSPECTION OF THE ROOT ZONE DEMONSTRATES THAT NEW ROOTS HAVE MIGRATED INTO THE SURROUNDING SOIL BY NO LESS THAN FOUR (4) INCHES.
- THE CITY SHALL PERIODICALLY INSPECT ALL INSTALLED PLANTS AND NOTIFY THE CONTRACTOR IF IT IS DETERMINED THAT THE SURVIVAL RATE IS NOT ACCEPTABLE. MINIMALLY, INSPECTIONS WILL BE CONDUCTED APPROXIMATELY ONE (1) MONTH, THREE (3) MONTHS, AND TEN (10) MONTHS AFTER PLANTING. WITHIN THIRTY (30) DAYS OF RECEIPT OF NOTIFICATION BY THE CITY, THE CONTRACTOR SHALL REMOVE ANY DEAD OR DYING PLANTS AND SHALL INSTALL ADDITIONAL PLANTS TO ACHIEVE THE ACCEPTABLE LEVEL OF PLANT SURVIVAL.
- XERISCAPE LANDSCAPE PRINCIPLES SHALL BE APPLIED TO ALL SITES AS SPECIFIED IN THE "SOUTH FLORIDA WATER MANAGEMENT DISTRICT'S XERISCAPE PLANT GUIDE II", UPDATED EDITION RESPECTIVELY.
- ALL TREES SHALL HAVE A 4 1/2" MIN. CLEAR TRUNK HEIGHT AND CALIPER SHALL BE MEASURED AT D.B.H. AT TIME OF PLANTING, UNLESS OTHERWISE SPECIFIED WITHIN THESE PLANS.
- ALL TRANSFORMERS, IRRIGATION PUMP HOUSES & MECHANICAL EQUIPMENT INCLUDING BACKFLOW PREVENTERS, ETC., SHALL BE SCREENED WITH HEDGE MATERIAL TO THE HEIGHT OF EACH ABOVE GROUND ELEMENT FOR COMPLETE SCREENING ON THREE (3) SIDES. (NOTE: THE QUANTITY OF SCREENING SHRUBS IS IN ADDITION TO ANY REQUIRED NUMBER OF SHRUBS AS PROVIDED IN THE PLANTING SCHEDULE. ALL SCREENING SHRUBS SHALL BE PLANTED FOR PROPER OPERATION OF EQUIPMENT BEING SCREENED AND/OR PER THE REQUIREMENTS OF THE UTILITY AS NECESSARY. ALL HEDGE MATERIAL REQUIRED FOR SCREENING PURPOSES SHALL BE PLANTED SO AS TO BE TIP TO TIP WITHIN SIX MONTHS OF PLANTING AND MAINTAINED SO AS TO FORM A CONTINUOUS VISUAL SCREEN. ADJUST SPACING AS NECESSARY AND/OR PROVIDE ADDITIONAL PLANTS TO PROVIDE AN ADEQUATE SCREEN. SHRUBS USED AS HEDGES SHALL BE CHRYSOBALANUS ICACO 'RED TIP' (RED TIP COCOPLUM), WITH A MINIMUM HEIGHT OF 24" AND A MINIMUM SPREAD OF 18", WHEN MEASURED IMMEDIATELY AFTER PLANTING & SHALL BE A MINIMUM OF 3' HEIGHT WITHIN 2 YRS. FROM THE DATE OF PLANTING.
- LANDSCAPE CONTRACTOR SHALL NOT INSTALL ANY SOD WITHIN THE PROJECT AREA.
- CONTRACTOR(S) SHALL BE RESPONSIBLE FOR OBTAINING, PAYING, PROCESSING AND PERMITTING ANY TREE REMOVALS, RELOCATIONS AND MITIGATION CONSISTENT WITH ANY AND ALL APPLICABLE AGENCIES HAVING JURISDICTION. THESE SHALL BE REQUIRED PRIOR TO THE REMOVAL OR RELOCATION OF ANY PLANT MATERIAL OR FOR LANDSCAPE PLANTING INSTALLATIONS. NO TREES OR OTHER PLANT MATERIAL MAY BE PLANTED WITHOUT A PERMIT FROM THE CITY. THE CITY MAY WAIVE ANY CITY PERMIT FEES OR PUBLIC WORKS DEPARTMENT RIGHT-OF-WAY PERMITS; HOWEVER, THE CONTRACTOR SHALL BE RESPONSIBLE TO PAY FOR ANY MIAMI-DADE CODE COMPLIANCE FEES.
- ALL PLANTING SHALL BE CLEAR 7 1/2 FT. IN FRONT & SIDES WITH 4 FT. IN REAR AROUND ALL FIRE HYDRANTS, CHECK VALVES, FIRE DEPT. EQUIPMENT, ETC. AS REQUIRED.

- CONTRACTOR SHALL BE RESPONSIBLE FOR COORDINATING WITH CITY REPRESENTATIVES AND CITY-APPROVED COMMUNITY ACTIVISTS TO CONDUCT A WALK-THROUGH TO ASSESS AND DETERMINE SPECIAL PRESERVATION ACTIVITIES FOR SENSITIVE HABITAT PLANTING PRIOR TO COMMENCEMENT OF CONSTRUCTION.
- THE CITY OR CITY'S REPRESENTATIVE SHALL BE NOTIFIED OF ANY POSSIBLE CHANGES FOR APPROVAL IN THE MATERIAL PRIOR TO INSTALLATION OF THE SAME.
- LANDSCAPE CONTRACTOR TO CONTACT THE CITY OR CITY'S REPRESENTATIVE TO SCHEDULE A PRE-CONSTRUCTION MEETING PRIOR TO INSTALLATION AS REQUIRED.
- LANDSCAPE CONTRACTOR TO RETURN TO JOB SITE 12 MONTHS AFTER SUBSTANTIAL COMPLETION AND REMOVE ALL TREE BRACES.
- ALL SYNTHETIC BURLAP, SYNTHETIC STRINGS OR CORDS, OR WIRE BASKETS SHALL BE REMOVED BEFORE ANY TREES ARE PLANTED. ALL SYNTHETIC TAPE (I.E. TAGGING TAPE, NURSERY TAPE) SHALL BE REMOVED FROM TRUNKS, BRANCHES, ETC. BEFORE INSPECTION. THE TOP 1/3 OF ANY NATURAL BURLAP SHALL BE REMOVED OR TUCKED INTO THE PLANTING HOLE BEFORE THE TREES ARE BACK FILLED.
- CONTRACTOR TO SET TREES NO DEEPER THAN THEY WERE IN THEIR ORIGINAL GROWING CONDITIONS WITH THE ROOT BALLS EVEN WITH, OR SLIGHTLY HIGHER (+/- 1"), THAN THE FINISHED GRADE. ALL RECEPTOR SITES SHALL BE MARKED WITH FINAL GRADE STAKES TO FACILITATE THE DIGGING OF THE TREE PIT TO THE CORRECT DEPTH FOR THE SIZE OF THE ROOTBALL.
- ALL PLANTING AREAS WITHIN 24 INCHES OF ANY ABUTTING BUILDING WALL SHALL BE EXCAVATED TO A DEPTH OF 30" MINIMUM AND REPLACED WITH SPECIFIED SOIL MIX. SOIL MIX SHALL BE FREE OF CONSTRUCTION DEBRIS, WEEDS, ROCKS, NOXIOUS PESTS AND DISEASES.
- TREES AND PALMS SHALL RECEIVE 12 INCHES MIN. OF SPECIFIED PLANT MIX USED AS BACKFILL PLANTING AROUND THE ROOT BALL.
- ALL TREES AND PALMS SHALL BE INSTALLED A MINIMUM OF 6' FROM CURBS, SIDEWALKS, PROPOSED BOLLARDS, UNDERGROUND UTILITIES, AS WELL AS 6' FROM ANY HARDSCAPE OR PAVED SURFACE, PROPOSED OR EXISTING.
- THE LANDSCAPE ARCHITECT OF RECORD MAY PROVIDE A CERTIFICATION LETTER TO THE CITY CERTIFYING THAT THE LANDSCAPING WAS INSTALLED IN ACCORDANCE TO THE PLANS AND SPECIFICATIONS. THIS WILL REQUIRE THAT THE LANDSCAPE ARCHITECT, OR AN ASSIGNED REPRESENTATIVE OF THE LANDSCAPE ARCHITECT OF RECORD, BE PRESENT FOR THE MAJORITY OF THE TIME DURING LANDSCAPE CONSTRUCTION TO OBSERVE MEANS AND METHODS EMPLOYED BY THE CONTRACTOR. IT IS THEREFORE THE RESPONSIBILITY OF THE CONTRACTOR TO COMMUNICATE IN WRITING ANY EXPECTED OR ANTICIPATED CONSTRUCTION TO THE LANDSCAPE ARCHITECT WITH NO LESS THAN 1 WEEKS' TIME PRIOR TO THE COMMENCEMENT OF SAID ACTIVITY.
- CONTRACTOR SHALL CONTACT THE COUNTY, CITY AND/OR UTILITY COMPANIES TO LOCATE ALL UNDERGROUND UTILITIES OR STRUCTURES PRIOR TO DIGGING. CONTRACTOR SHALL REPAIR ANY AND ALL DAMAGES TO UNDERGROUND UTILITIES. ANY ADDITIONAL EXPENSES, INCLUDING DESIGN, ENGINEERING, CONSTRUCTION AND CLIENT-MANDATED INSPECTIONS CAUSED BY CONTRACTOR-GENERATED DAMAGES, SHALL BE SOLELY AT THE CONTRACTOR'S EXPENSE AND SHALL BE AT NO ADDITIONAL COST TO THE CITY.
- CONTRACTOR SHALL VERIFY ALL ESTIMATED QUANTITIES OF MATERIAL SHOWN ON THE DRAWINGS PRIOR TO SUBMITTING ANY BID - CHANGE ORDERS RESULTING FROM MISCALCULATIONS, OMISSIONS, OR DISCREPANCIES SHALL NOT BE ALLOWED. PLANTING LIST OR SCHEDULE SHALL TAKE PRECEDENCE OVER PLANTING PLAN.
- ALL PLANT MATERIAL SYMBOLS SHOWN ON LANDSCAPE PLAN SHALL BE CONSIDERED DIAGRAMMATIC AND SHOULD BE ADJUSTED IN THE FIELD BY THE CONTRACTOR TO AVOID ALL UTILITIES AND ALL OTHER OBSTRUCTIONS.
- ALL SIZES SHOWN FOR PLANT MATERIAL ON THE PLANS ARE TO BE CONSIDERED MINIMUM.
- SITE PREPARATION SHALL INCLUDE THE ERADICATION & REMOVAL OF ANY WEEDS, GRASS, CLEAN-UP OF ANY DEAD MATERIAL, DEBRIS, AND RUBBISH.
- UPON FINALIZATION OF THE PROJECT, CONTRACTOR SHALL FURNISH AND PROVIDE AT HIS/HER EXPENSE AS-BUILT DIGITAL FILES IN AUTOCAD VERSION 2007 OR LATER AND PDF AND HARDCOPY PRINTS AT THE SAME DIMENSIONAL DRAWING SCALE AND SHEET SIZE AS THE PROVIDED PLANS. AS-BUILT INFORMATION SHALL REFLECT ALL FINAL CONSTRUCTED CONDITIONS, INCLUDING HARDSCAPE, PLANTING (INCLUDING SPECIES AND LOCATIONS) AND ANY OTHER IMPROVEMENTS TO ITS NEAREST TRUE ON-SITE LOCATION AND CONDITION. THE CITY MAY FURNISH A DESIGN AUTOCAD FILE FOR CONTRACTOR TO UTILIZE AS A BASE FOR DEVELOPING AS-BUILT DRAWINGS. AS-BUILT FILES AND PRINTS SHALL BE DISTRIBUTED TO BOTH THE CITY AND THE ENGINEER/LANDSCAPE ARCHITECT OF RECORD.
- CONTRACTOR SHALL INSTALL ALL NEW TREES WITH A MAX OF 72 HOURS OF RECEIPT OF DELIVERY TO THE PROJECT SITE. WHEN STORED ONSITE, CONTRACTOR SHALL PROTECT ALL ROOTBALLS FROM DIRECT EXPOSURE AND SHALL KEEP ALL ROOTBALLS PROPERLY HYDRATED, CONSISTENT WITH HORTICULTURAL BEST PRACTICES AND STANDARDS.
- CONTRACTOR SHALL RESET AND/OR REPLANT ANY TREE IDENTIFIED FOR RELOCATION WITHIN A MAX OF 72 HOURS AFTER BEING UP-ROOTED. CONTRACTOR SHALL PROTECT ALL ROOTBALLS FROM DIRECT SUN EXPOSURE AND SHALL KEEP THEM HYDRATED CONSISTENT WITH HORTICULTURAL BEST PRACTICES AND STANDARDS.
- TREES AND PALMS WITH GIRDLING ROOTS SHALL NOT BE ACCEPTED.
- ALL TREES AND PALMS SHALL BE PLACED TO ENSURE CANOPY AND FRUITS DROPS OCCUR WITHIN A SAFE DISTANCE FREE OF WALKWAYS.
- ALL UNDERGROUND UTILITIES SHALL BE PLACED AND/OR INSTALLED OUTSIDE OF THE AREAS DEFINED BY ANY TREE PROTECTION BARRIERS.
- LOCK TAGS SHALL BE INSTALLED ON ALL TREES/PALMS THAT ARE TO BE RELOCATED. TAGS WILL BE REQUIRED TO BE REPLACED IF THEY ARE BROKEN OR REMOVED.
- CONTRACTOR IS ADVISED THAT ALL REQUIREMENTS AND STANDARDS EXPRESSED IN THE CITY OF MIAMI BEACH'S CODE OF GENERAL ORDINANCES, DIV. 2 TREE PRESERVATION AND

PROTECTION SHALL BE ABIDED BY WITHOUT EXCEPTION. CONTRACTOR SHALL BE RESPONSIBLE FOR ADHERING TO ALL CITY-STANDARD PROCEDURES IN THE REMOVAL, RELOCATION AND PRESERVATION OF ANY AND ALL TREES.

- GENERAL CONTRACTOR SHALL BE RESPONSIBLE FOR PRUNING ALL TREES IN ACCORDANCE WITH THE PROVIDED DETAIL LOCATED ON SHEET LD-002. CONTRACTOR SHALL ESTIMATE AND INCLUDE ALL COSTS IN THEIR LANDSCAPING LINE ITEM IN THE BID FORM.

**ENVIRONMENTAL NOTES**

- NO STAGING OR ANY OTHER ACTIVITIES FOR THIS PROJECT TO OCCUR WITHIN OR ADJACENT TO ANY EXISTING WETLANDS OR ANY OTHER ENVIRONMENTALLY SENSITIVE AREAS.
- CONTRACTOR SHALL NOT STAGE OR OPERATE EQUIPMENT WITHIN THE DRIP-LINE OF ANY TREES OR WITHIN THE TREE PROTECTION AREAS.
- CONTRACTOR SHALL REVIEW ENVIRONMENTAL REQUIREMENTS OF ANY PROPOSED STAGING AREAS WITH THE PROJECT ENGINEER AT LEAST SEVENTY-TWO (72) HOURS PRIOR TO USE.
- ANY MATERIAL TO BE STOCKPILED FOR PERIODS GREATER THAN 24 HOURS SHALL BE PROTECTED BY APPROPRIATE EROSION CONTROL DEVICES. COST TO BE INCLUDED IN THE RELATED BID ITEM.

**WATERING NOTE:**

ALL NEW PLANT MATERIAL, IRRESPECTIVE OF PLANTING PHASE, SHALL HAVE AN ESTABLISHMENT PERIOD OF 12 MONTHS FROM THE TIME OF FINAL ACCEPTANCE AT SUBSTANTIAL COMPLETION. DURING THE ESTABLISHMENT PERIOD THE CONTRACTOR WILL BE RESPONSIBLE FOR THE FOLLOWING ITEMS: WATERING PER THE SCHEDULE ATTACHED, RE-SETTING OF PLANTS, REPLACEMENT OF SICK OR DEAD PLANTS, AND ALL OTHER CARE REQUIRED FOR PROPER GROWTH. ANY PLANT MATERIAL NOT IN HEALTHY GROWING CONDITION WILL BE REPLACED BY THE CONTRACTOR AT NO ADDITIONAL COST TO THE CLIENT. THE 12 MONTH WARRANTEE/ESTABLISHMENT PERIOD SHALL BE EXTENDED BY 45 DAYS FOR ALL REPLACEMENT PLANT MATERIAL. AT THE CLIENT'S EXPENSE, THE CONTRACTOR WILL REPLACE ANY PLANT MATERIAL DAMAGED AS A RESULT OF AUTOMOBILE ACCIDENTS OR "ACTS OF GOD" LIMITED TO HAIL, FREEZE, LIGHTNING, AND WINDS EXCEEDING 75 MPH AS DEFINED BY THE MIAMI HURRICANE CENTER.

WATERING SCHEDULE (FIRST 6 MONTHS)	
WEEKS	FREQUENCY
1-2	MON., TUES., THURS., SAT.
3-4	MON., TUES., THURS., SAT.
5-6	MON., TUES., THURS., SAT.
7-8	MON., TUES., THURS., SAT.
9-10	MON., THURS., SAT.
11-12	MON., THURS., SAT.
13-14	MON., THURS., SAT.
15-16	MON., THURS., SAT.
17-18	THURS., SUN.
19-20	THURS., SUN.
21-22	THURS., SUN.
23-24	THURS., SUN.

\* WATERING CONTRACT SHALL BE INCLUDED IN CONTRACTORS BID FOR ANY PLANT MATERIAL THAT HAS BEEN ROOT PRUNED, DISTURBED BY CONSTRUCTION, OR WHERE PROPOSED OR EXISTING IRRIGATION SYSTEMS ARE NOT FUNCTIONAL. ALL WARRANTIES SHALL BE IN PLACE BY CONTRACTOR REGARDLESS OF NON-OPERATIONAL IRRIGATION SYSTEMS OR AREAS WHERE NO IRRIGATION IS PROPOSED.



THE ARCHITECTS (OWNER) HAVE CONSIDERED AND APPROVED THE PROPOSED LANDSCAPE PLAN AND SPECIFICATIONS. THE CONTRACTOR SHALL BE RESPONSIBLE FOR OBTAINING ALL NECESSARY PERMITS AND APPROVALS FROM THE CITY OF MIAMI BEACH AND ANY OTHER AGENCIES HAVING JURISDICTION. THE CONTRACTOR SHALL BE RESPONSIBLE FOR OBTAINING ALL NECESSARY PERMITS AND APPROVALS FROM THE CITY OF MIAMI BEACH AND ANY OTHER AGENCIES HAVING JURISDICTION. THE CONTRACTOR SHALL BE RESPONSIBLE FOR OBTAINING ALL NECESSARY PERMITS AND APPROVALS FROM THE CITY OF MIAMI BEACH AND ANY OTHER AGENCIES HAVING JURISDICTION.



STATE OF FLORIDA REGISTERED PROFESSIONAL LANDSCAPE ARCHITECT LICENSE NO. 138

:LIMINARY NOT FOR CONSTRUCTION

**CITY OF MIAMI BEACH  
FIRE STATION #01  
LANDSCAPE NOTES**

Project number  
**1929**

DISTRIBUTION

MILESTONE	DATE
30% PLANS	10/11/2021

833 6TH STREET MIAMI BEACH, FL 33139

**LANDSCAPE NOTES**

10-11-2021  
MIAMI BEACH HISTORIC PRESERVATION BOARD - FINAL SUBMITTAL

**CITY OF MIAMI BEACH, OFFICE OF CAPITAL IMPROVEMENT  
PROJECTS-FIRE STATION #01**

833 6TH STREET MIAMI BEACH, FL 33139



Wannemacher Jensen Architects, Inc.  
132 Mirror Lake Drive North Unit 301  
St. Petersburg, Florida 33701-3214  
(727) 822-5566 fax (727) 822-5475  
www.wjarc.com  
AR94244  
©Wannemacher Jensen Architects, Inc.






TREE MITIGATION CALCULATOR DATA CHART				
ITEM	SPECIE	TOTAL SUM OF INCHES REMOVED		REQUIRED REPLACEMENT TREES AND MINIMUM SIZE PER CODE
1	Swietenia mahagoni (Mahogany Tree)	15.5"	/ 6" (1 TREE UNIT) = MIN.	3 TREES @ 16' HT, 8' Sprd, 4" DBH
2	Lysiloma sabicu (Sabicu Tamarind)	32.5"	/ 6" (1 TREE UNIT) = MIN.	6 TREES @ 16' HT, 8' Sprd, 4" DBH
TOTAL SUM OF CANOPY MITIGATION TREES REQUIRED				9 TREES @ 16' HT, 8' Sprd, 4" DBH
TOTAL SUM OF CANOPY MITIGATION TREES PROVIDED				9 TREES @ 16' HT, 8' Sprd, 4" DBH
TOTAL DEFICIENCY OF MITIGATION				0 TREES @ 16' HT, 8' Sprd, 4" DBH

PALM MITIGATION CALCULATOR DATA CHART				
ITEM	SPECIE	TOTAL NUMBER OF REMOVALS	TREE UNIT PER PALM EXCEEDING 15' OAH HT	REQUIRED REPLACEMENT TREES AND MINIMUM SIZE PER CODE
2	Archontophoenix alexandrae (Alexander Palm)	3	x 1 = MIN.	3 TREES @ 12' HT, 6' Sprd, 2" DBH
3	Coccothrinax argentata (Florida Silver Palm)	1	x 1 = MIN.	1 TREES @ 12' HT, 6' Sprd, 2" DBH
4	Livistona chinensis (Chinese Fan Palm)	3	x 1 = MIN.	3 TREES @ 12' HT, 6' Sprd, 2" DBH
5	Phoenix reclinata (Wild Date Palm)	1	x 1 = MIN.	1 TREES @ 12' HT, 6' Sprd, 2" DBH
6	Sabal palmetto (Cabbage Palm)	13	x 1 = MIN.	13 TREES @ 12' HT, 6' Sprd, 2" DBH
7	Thrinax radiata (Florida Thatch Palm)	2	x 1 = MIN.	2 TREES @ 12' HT, 6' Sprd, 2" DBH
TOTAL SUM OF PALM MITIGATION TREES REQUIRED				23 TREES @ 12' HT, 6' Sprd, 2" DBH
TOTAL SUM OF PALM MITIGATION TREES PROVIDED				23 TREES @ 12' HT, 6' Sprd, 2" DBH
TOTAL DEFICIENCY OF MITIGATION				0 TREES @ 12' HT, 6' Sprd, 2" DBH

**TREE MITIGATION SPECIES:**

-  6 QTY - *QUERCUS VIRGINIANA 'CATHEDRAL'* - **CATHEDRAL LIVE OAK** (FIELD GROWN, 16' MIN OAH, 4" MIN DBH, 8' MIN. SPRD, 7' MIN CT, FLORIDA NO. 1)
-  3 QTY - *QUERCUS VIRGINIANA 'CATHEDRAL'* - **WILD TAMARIND TREE** (FIELD GROWN, 16' MIN OAH, 4" MIN DBH, 8' MIN. SPRD, 7' MIN CT, FLORIDA NO. 1)

**PALM MITIGATION SPECIES:**

-  4 QTY - *CONOCARPUS ERECTUS* - **GREEN BUTTWOOD** (FIELD GROWN, 12' MIN OAH, 3" MIN DBH, STANDARD, FLORIDA NO. 1)
-  5 QTY - *GUAJACUM SANCTUM* - **LIGNUM VITAE** (FIELD GROWN, 12' MIN OAH, 3" MIN DBH, STANDARD, FLORIDA NO. 1)
-  14 QTY - *EUGENIA FOETIDA* - **SPANISH STOPPER** (FIELD GROWN, 12' MIN OAH, 3" MIN DBH, MULTI-FORM, FLORIDA NO. 1)

**MITIGATION SCHEDULES**

10-11-2021  
 MIAMI BEACH HISTORIC PRESERVATION BOARD - FINAL SUBMITTAL

**CITY OF MIAMI BEACH, OFFICE OF CAPITAL IMPROVEMENT  
 PROJECTS-FIRE STATION #01**

833 6TH STREET MIAMI BEACH, FL 33139

Wannemacher Jensen Architects, Inc.  
 132 Mirror Lake Drive North Unit 301  
 St. Petersburg, Florida 33701-3214  
 (727) 822-5566 fax (727) 822-5475  
 www.wjarc.com  
 AR94244  
 ©Wannemacher Jensen Architects, Inc.



REQUIRED TREES VS. PROVIDED TREES					
FUTURE LAND USE LANDSCAPE REQUIREMENTS (RM-1 FLU):					
CODE REQUIREMENT	CALCULATION	REQUIRED # OF TREES/SHRUBS	PROVIDED # OF TREES/SHRUBS	PLANTED OFFSITE	TREE SPECIFICATIONS
28 Trees / Acre of Net Lot Area	1.03 ACRES x 28 (45,000 SQFT)	29	20	9	12' HEIGHT, 6' SPREAD, 2" DBH
12 shrubs / number of required trees	29 Req Trees x 12	348	4327	0	18-24" HEIGHT, 18" SPACING
Small Trees (Large Shrubs) shall be 10% of required shrubs	348 Req Shrubs x .10	35	35	0	6' HEIGHT, 4' SPREAD
LANDSCAPE BUFFER REQUIREMENTS:					
CODE REQUIREMENT	TOTAL REQUIRED # OF TREES/SHRUBS	EXISTING # OF TREES/SHRUBS	PROPOSED # OF TREES/SHRUBS	PLANTED OFFSITE	TREE SPECIFICATIONS
Trees planted at max. spacing of 20' OC	15	2	8	5	12' HEIGHT, 6' SPREAD, 2" DBH
Continuous screening of shrubs between land uses OR vines with approved fencing	327	0	327	0	18-24" HEIGHT, 18" SPACING
LANDSCAPE AREAS IN PERMANENT PARKING LOTS REQUIREMENTS:					
CODE REQUIREMENT	TOTAL REQUIRED # OF TREES	EXISTING # OF TREES	PROPOSED # OF TREES	PLANTED OFFSITE	TREE SPECIFICATIONS
Trees at end of parking rows		6	5	1	MIN. 12' HEIGHT, 6' SPREAD, 2" DBH
Shrubs at end of parking rows		743	743	0	18-24" HEIGHT, 18" SPACING
Tree median every 90 linear feet of parking		1	0	1	MIN. 12' HEIGHT, 6' SPREAD, 2" DBH
STREET TREE REQUIREMENTS:					
CODE REQUIREMENT	TOTAL REQUIRED # OF TREES	EXISTING # OF TREES	PROPOSED # OF TREES	PLANTED OFFSITE	TREE SPECIFICATIONS
Street Trees planted at max. average spacing of 20' o.c.	31	3	13	15	MIN. MATURE HEIGHT OF 20' W/ MIN. CLEAR TRUNK OF 4', MIN. HEIGHT OF 12'-14' OA, & MIN. 3" CALIPER AT TIME OF PLANTING

TOTAL NUMBER OF REQUIRED CANOPY TREES TO BE PLANTED OFFSITE: 31 TREES

PROPOSED PLANT LIST				
Abbrev	Qty	Scientific Name	Common Name	Specifications
<b>LARGE CANOPY TREES</b>				
BSG	2	Bursera simaruba	Gumbo Limbo	Field Grown, 16' Min OAH, 4" Min DBH, 8' Min. Sprd, Florida No. 1
LSM	9	Lysiloma sabicu	Wild Tamarind Tree	Field Grown, 16' Min OAH, 4" Min DBH, 8' Min. Sprd, 7' Min CT, Florida No. 1
QVL	1	Quercus virginiana	Southern Live Oak	Field Grown, 16' Min OAH, 4" Min DBH, 8' Min. Sprd, 7' Min CT, Florida No. 1
QVC	7	Quercus virginiana 'Cathedral'	Cathedral Live Oak	Field Grown, 16' Min OAH, 4" Min DBH, 8' Min. Sprd, 7' Min CT, Florida No. 1
<b>SMALL CANOPY TREES</b>				
CEG	5	Conocarpus erectus	Green Buttonwood	Field Grown, 12' Min OAH, 3" Min DBH, Standard, Florida No. 1
CES	25	Conocarpus erectus 'Sericea'	Silver Buttonwood	Field Grown, 12' Min OAH, 3" Min DBH, Standard, Florida No. 1
EFS	18	Eugenia foetida	Spanish Stopper	Field Grown, 12' Min OAH, 3" Min DBH, Multi-form, Florida No. 1
LVI	7	Guaiacum sanctum	Lignum vitae	Field Grown, 12' Min OAH, 3" Min DBH, Standard, Florida No. 1
LIG	2	Ligustrum japonicum	Japanese Privet	Field Grown, 12' Min OAH, 3" Min DBH, Multi-form, Florida No. 1
SFS	5	Plumeria obtusa	Singapore Frangipani	Field Grown, 12' Min OAH, 3" Min DBH, Standard, Florida No. 1
<b>PALM TREES</b>				
PDP	3	Phoenix dactylifera 'Medjool'	Medjool Date Palm	FG, 16' Wood, Florida Fancy
PES	15	Ptychosperma elegans 'Single'	Solitaire Palm, Single	FG, 8' Wood, Single, Florida Fancy
PET	9	Ptychosperma elegans 'Triple'	Solitaire Palm, Triple	FG, 8' Wood, Triple, Florida Fancy
<b>SHRUBS</b>				
BII	12	Capparis cynophallophora	Jamaican Caper	3 Gal., Full to Base, 2' OA Ht x 2' Sprd, Max. 2' O.C.
CME	191	Cassia bahamiensis	Bahama Cassia	3 Gal., Full to Base, 2' OA Ht x 2' Sprd, Max. 2' O.C.
CCP	59	Chrysobalanus icaco	Cocoplum	3 Gal., Full to Base, 2' OA Ht x 2' Sprd, Max. 2' O.C.
CHI	76	Clusia rosea	Autograph Tree	3 Gal., Full to Base, 2' OA Ht x 2' Sprd, Max. 2' O.C.
CLU	173	Ernodea littoralis	Beach Creeper	3 Gal., Full to Base, 2' OA Ht x 2' Sprd, Max. 2' O.C.
DCV	102	Hibiscus rosea-sinensis	Hibiscus	3 Gal., Full to Base, 2' OA Ht x 2' Sprd, Max. 2' O.C.
DTF	411	Hymenocallis latifolia	Spider Lily	3 Gal., Full to Base, 2' OA Ht x 2' Sprd, Max. 2' O.C.
DIC	20	Ilex vomitoria	Youpon Holly	1 Gal., Full to Base, 12' OA Ht x 12" Sprd, Max. 18" O.C.
FMG	155	Jatropha hastata	Jatropha	3 Gal., Full to Base, 2' OA Ht x 2' Sprd, Max. 2' O.C.
LIR	802	Juniperus Spp	Juniper	3 Gal., Full to Base, 2' OA Ht x 2' Sprd, Max. 2' O.C.
MSW	436	Muhlenbergia capillaris	Pink Muhly Grass	3 Gal., Full to Base, 2' OA Ht x 2' Sprd, Max. 2' O.C.
MDP	130	Myrica cerifera	Wax Myrtle	3 Gal., Full to Base, 2' OA Ht x 2' Sprd, Max. 2' O.C.
NBM	43	Raphiolepis indica	Indian Hawthorne	1 Gal., Full to Base, 12' OA Ht x 12" Sprd, Max. 18" O.C.
NEB	196	Russelia equisetiformis	Firecracker Plant	3 Gal., Full to Base, 2' OA Ht x 2' Sprd, Max. 2' O.C.
POP	238	Sophora tomentosa	Necklace Pod	3 Gal., Full to Base, 2' OA Ht x 2' Sprd, Max. 2' O.C.
PBM	66	Spartina bakeri	Sand Cord Grass	3 Gal., Full to Base, 2' OA Ht x 2' Sprd, Max. 2' O.C.
PGM	20	Vitex trifolia	Vitex	3 Gal., Full to Base, 2' OA Ht x 2' Sprd, Max. 2' O.C.
PRC	152	Philodendron 'Rojo Congo'	Rojo Congo Philodendron	Full to base, 7 gal, 30" o.c.
PXU	116	Philodendron 'Xanadu'	Philodendron 'Xanadu'	Full to base, 3 gal, 24" o.c.
PMP	33	Podocarpus macrophyllus 'Pringles'	Pringles Podocarpus	Full to base, 3 gal, 24" o.c.
PNW	69	Psychotria nervosa	Wild Coffee	Full to base, 3 gal, 24" o.c.
DPN	252	Psychotria nervosa 'Little Psycho'	Dwarf Wild Coffee	Full to base, 3 gal, 24" o.c.
REL	24	Rhapis excelsa	Lady Palm	Full to base, 15 gal, 36" o.c.
RBM	23	Ruellia brittoniana	Mexican Petunia	Full to base, 3 gal, 24" o.c.
SBC	43	Spartina bakeri	Cordgrass	Full to base, 3 gal, 24" o.c.
TPP	1340	Tradescantia pallida	Purple Queen	Full to base, 1 gal, 12" o.c.
TDF	129	Tripsacum dactyloides	Fakahatchee Grass	Full to base, 3 gal, 24" o.c.
<b>GROUNDCOVERS BY AREA</b>				
	285 sqft	Arachis glabrata	Perennial Peanut	

- Notes:
- General Contractor shall be responsible for verifying all quantities in accordance to the permitted plant list.
  - All shrubs shall be free of fungus, insects and from all disease.
  - All vegetation shall have root balls fully grown into the specified container - recently transplanted material into up-sized containers shall not be accepted.
  - All quantities of proposed trees and shrubs do not account for mitigated trees. Quantities for mitigated trees can be found in the tree mitigation plan set on sheet L-P201.

PROPOSED OFF-SITE PLANT LIST				
Abbrev	Qty	Scientific Name	Common Name	Specifications
<b>FUTURE LAND USE LANDSCAPE REQUIREMENTS (9 TREES)</b>				
CEG	3	Conocarpus erectus	Green Buttonwood	Field Grown, 12' Min OAH, 2" Min DBH, 6' Sprd, Standard, Florida No. 1
CES	3	Conocarpus erectus 'Sericea'	Silver Buttonwood	Field Grown, 12' Min OAH, 2" Min DBH, 6' Sprd, Standard, Florida No. 1
EFS	3	Eugenia foetida	Spanish Stopper	Field Grown, 12' Min OAH, 2" Min DBH, 6' Sprd, Standard, Florida No. 1
<b>LANDSCAPE BUFFER REQUIREMENTS (5 TREES)</b>				
CEG	3	Conocarpus erectus	Green Buttonwood	Field Grown, 12' Min OAH, 2" Min DBH, 6' Sprd, Standard, Florida No. 1
CES	2	Conocarpus erectus 'Sericea'	Silver Buttonwood	Field Grown, 12' Min OAH, 2" Min DBH, 6' Sprd, Standard, Florida No. 1
<b>LANDSCAPE AREAS IN PERMANENT PARKING LOTS REQUIREMENTS (2 TREES)</b>				
CES	2	Conocarpus erectus 'Sericea'	Silver Buttonwood	Field Grown, 12' Min OAH, 2" Min DBH, 6' Sprd, Standard, Florida No. 1
<b>STREET TREE REQUIREMENTS (15 TREES)</b>				
CEG	3	Conocarpus erectus	Green Buttonwood	Field Grown, 20' Min Mature Height, 12' Min OAH, 4' Min Clear Trunk, 3" Min Caliper at Time of Planting
CES	3	Conocarpus erectus 'Sericea'	Silver Buttonwood	Field Grown, 20' Min Mature Height, 12' Min OAH, 4' Min Clear Trunk, 3" Min Caliper at Time of Planting
LVI	3	Guaiacum sanctum	Lignum vitae	Field Grown, 20' Min Mature Height, 12' Min OAH, 4' Min Clear Trunk, 3" Min Caliper at Time of Planting
QVL	3	Quercus virginiana	Southern Live Oak	Field Grown, 20' Min Mature Height, 12' Min OAH, 4' Min Clear Trunk, 3" Min Caliper at Time of Planting
BSG	3	Bursera simaruba	Gumbo Limbo	Field Grown, 20' Min Mature Height, 12' Min OAH, 4' Min Clear Trunk, 3" Min Caliper at Time of Planting

- Notes:
- General Contractor shall be responsible for verifying all quantities in accordance to the permitted plant list.
  - All shrubs shall be free of fungus, insects and from all disease.
  - All vegetation shall have root balls fully grown into the specified container - recently transplanted material into up-sized containers shall not be accepted.
  - All quantities of proposed trees and shrubs do not account for mitigated trees. Quantities for mitigated trees can be found in the tree mitigation plan set on sheet L-P201.

# PLANTING SCHEDULES

10-11-2021

MIAMI BEACH HISTORIC PRESERVATION BOARD - FINAL SUBMITTAL

## CITY OF MIAMI BEACH, OFFICE OF CAPITAL IMPROVEMENT PROJECTS-FIRE STATION #01

833 6TH STREET MIAMI BEACH, FL 33139

Wannemacher Jensen Architects, Inc.  
132 Mirror Lake Drive North Unit 301  
St. Petersburg, Florida 33701-3214  
(727) 822-5566 fax (727) 822-5475  
www.wjarc.com  
AR94244  
©Wannemacher Jensen Architects, Inc.

