

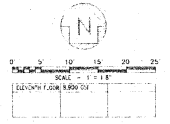
FINISH SCHEDULE - 11TH FLOOR

DELANO HOTEL	FLOOR	BASE	WALL-NORTH	WALL-EAST	WALL-SOUTH	WALL-WEST	CEILING	DOORS
1100	ELEVATOR LOBBY	E.S.C.	PLY	PLY	PLY	PLY	PLY	PLY
1100A	SPACE	E.S.C.	PLY	PLY	PLY	PLY	PLY	PLY
1100B	ICE MACHINE	E.S.C.	PLY	PLY	PLY	PLY	PLY	PLY
1100C	MECHANICAL	E.S.C.	PLY	PLY	PLY	PLY	PLY	PLY
1100D	HOUSEKEEPING	E.S.C.	PLY	PLY	PLY	PLY	PLY	PLY
1100E	SERVICE	E.S.C.	PLY	PLY	PLY	PLY	PLY	PLY
1102	LOFT GUEST SUITE	E.S.C.	PLY	PLY	PLY	PLY	PLY	PLY
1102A	BATHROOM	E.S.C.	PLY	PLY	PLY	PLY	PLY	PLY
1102B	CLOSET	E.S.C.	PLY	PLY	PLY	PLY	PLY	PLY
1102C	GUEST BEDROOM	E.S.C.	PLY	PLY	PLY	PLY	PLY	PLY
1102D	CLINET	E.S.C.	PLY	PLY	PLY	PLY	PLY	PLY
1102E	LOBBY	E.S.C.	PLY	PLY	PLY	PLY	PLY	PLY
1102F	LOBBY	E.S.C.	PLY	PLY	PLY	PLY	PLY	PLY
1102G	LOBBY	E.S.C.	PLY	PLY	PLY	PLY	PLY	PLY
1102H	LOBBY	E.S.C.	PLY	PLY	PLY	PLY	PLY	PLY
1102I	LOBBY	E.S.C.	PLY	PLY	PLY	PLY	PLY	PLY
1102J	LOBBY	E.S.C.	PLY	PLY	PLY	PLY	PLY	PLY
1102K	LOBBY	E.S.C.	PLY	PLY	PLY	PLY	PLY	PLY
1102L	LOBBY	E.S.C.	PLY	PLY	PLY	PLY	PLY	PLY
1102M	LOBBY	E.S.C.	PLY	PLY	PLY	PLY	PLY	PLY
1102N	LOBBY	E.S.C.	PLY	PLY	PLY	PLY	PLY	PLY
1102O	LOBBY	E.S.C.	PLY	PLY	PLY	PLY	PLY	PLY
1102P	LOBBY	E.S.C.	PLY	PLY	PLY	PLY	PLY	PLY
1102Q	LOBBY	E.S.C.	PLY	PLY	PLY	PLY	PLY	PLY
1102R	LOBBY	E.S.C.	PLY	PLY	PLY	PLY	PLY	PLY
1102S	LOBBY	E.S.C.	PLY	PLY	PLY	PLY	PLY	PLY
1102T	LOBBY	E.S.C.	PLY	PLY	PLY	PLY	PLY	PLY
1102U	LOBBY	E.S.C.	PLY	PLY	PLY	PLY	PLY	PLY
1102V	LOBBY	E.S.C.	PLY	PLY	PLY	PLY	PLY	PLY
1102W	LOBBY	E.S.C.	PLY	PLY	PLY	PLY	PLY	PLY
1102X	LOBBY	E.S.C.	PLY	PLY	PLY	PLY	PLY	PLY
1102Y	LOBBY	E.S.C.	PLY	PLY	PLY	PLY	PLY	PLY
1102Z	LOBBY	E.S.C.	PLY	PLY	PLY	PLY	PLY	PLY

DOOR SCHEDULE - 11TH FLOOR

NO.	SIZE	TYPE	WALL	FRAME	GLASS	SWITCH	REMARKS
1100	10'0" x 10'0"	WOOD	PLY	PLY	PLY	PLY	CONNECTING DOOR
1100A	10'0" x 10'0"	WOOD	PLY	PLY	PLY	PLY	CONNECTING DOOR
1100B	10'0" x 10'0"	WOOD	PLY	PLY	PLY	PLY	CONNECTING DOOR
1100C	10'0" x 10'0"	WOOD	PLY	PLY	PLY	PLY	CONNECTING DOOR
1100D	10'0" x 10'0"	WOOD	PLY	PLY	PLY	PLY	CONNECTING DOOR
1100E	10'0" x 10'0"	WOOD	PLY	PLY	PLY	PLY	CONNECTING DOOR
1100F	10'0" x 10'0"	WOOD	PLY	PLY	PLY	PLY	CONNECTING DOOR
1100G	10'0" x 10'0"	WOOD	PLY	PLY	PLY	PLY	CONNECTING DOOR
1100H	10'0" x 10'0"	WOOD	PLY	PLY	PLY	PLY	CONNECTING DOOR
1100I	10'0" x 10'0"	WOOD	PLY	PLY	PLY	PLY	CONNECTING DOOR
1100J	10'0" x 10'0"	WOOD	PLY	PLY	PLY	PLY	CONNECTING DOOR
1100K	10'0" x 10'0"	WOOD	PLY	PLY	PLY	PLY	CONNECTING DOOR
1100L	10'0" x 10'0"	WOOD	PLY	PLY	PLY	PLY	CONNECTING DOOR
1100M	10'0" x 10'0"	WOOD	PLY	PLY	PLY	PLY	CONNECTING DOOR
1100N	10'0" x 10'0"	WOOD	PLY	PLY	PLY	PLY	CONNECTING DOOR
1100O	10'0" x 10'0"	WOOD	PLY	PLY	PLY	PLY	CONNECTING DOOR
1100P	10'0" x 10'0"	WOOD	PLY	PLY	PLY	PLY	CONNECTING DOOR
1100Q	10'0" x 10'0"	WOOD	PLY	PLY	PLY	PLY	CONNECTING DOOR
1100R	10'0" x 10'0"	WOOD	PLY	PLY	PLY	PLY	CONNECTING DOOR
1100S	10'0" x 10'0"	WOOD	PLY	PLY	PLY	PLY	CONNECTING DOOR
1100T	10'0" x 10'0"	WOOD	PLY	PLY	PLY	PLY	CONNECTING DOOR
1100U	10'0" x 10'0"	WOOD	PLY	PLY	PLY	PLY	CONNECTING DOOR
1100V	10'0" x 10'0"	WOOD	PLY	PLY	PLY	PLY	CONNECTING DOOR
1100W	10'0" x 10'0"	WOOD	PLY	PLY	PLY	PLY	CONNECTING DOOR
1100X	10'0" x 10'0"	WOOD	PLY	PLY	PLY	PLY	CONNECTING DOOR
1100Y	10'0" x 10'0"	WOOD	PLY	PLY	PLY	PLY	CONNECTING DOOR
1100Z	10'0" x 10'0"	WOOD	PLY	PLY	PLY	PLY	CONNECTING DOOR

- NOTES:
1. FOR FINISH SCHEDULE - 11TH FLOOR SEE FINISH SCHEDULE.
 2. FOR FINISH SCHEDULE - 11TH FLOOR SEE FINISH SCHEDULE.
 3. FOR FINISH SCHEDULE - 11TH FLOOR SEE FINISH SCHEDULE.
 4. FOR FINISH SCHEDULE - 11TH FLOOR SEE FINISH SCHEDULE.
 5. FOR FINISH SCHEDULE - 11TH FLOOR SEE FINISH SCHEDULE.
 6. FOR FINISH SCHEDULE - 11TH FLOOR SEE FINISH SCHEDULE.
 7. FOR FINISH SCHEDULE - 11TH FLOOR SEE FINISH SCHEDULE.
 8. FOR FINISH SCHEDULE - 11TH FLOOR SEE FINISH SCHEDULE.
 9. FOR FINISH SCHEDULE - 11TH FLOOR SEE FINISH SCHEDULE.
 10. FOR FINISH SCHEDULE - 11TH FLOOR SEE FINISH SCHEDULE.

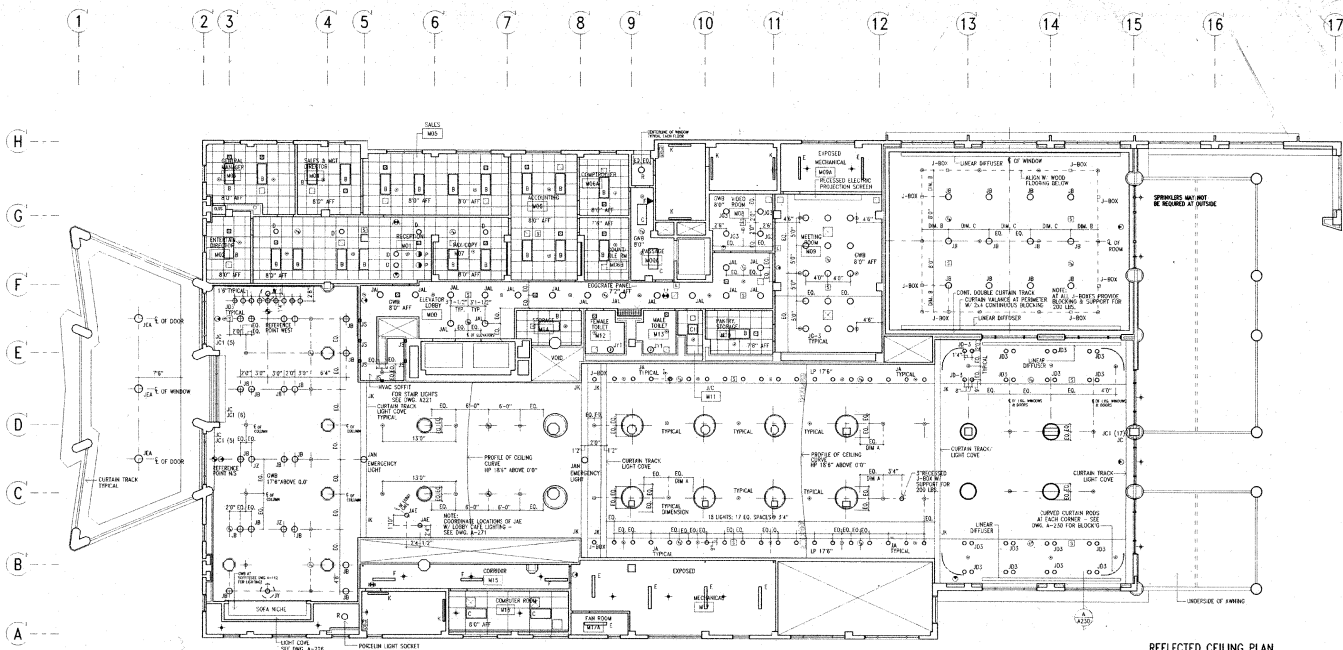


STARBUCK
 100 WEST 11TH STREET
 MIAMI BEACH, FLORIDA 33404
FINARON TECHS
 100 WEST 11TH STREET
 MIAMI BEACH, FLORIDA 33404
BEINSON ARCHITECT P.A.
 766 NW 107th AVENUE
 MIAMI, FL 33157
CONSULTING ARCHITECT
STEVEN FELLER P.E., INC.
 270 W. OAKLAND PARK BLVD.
 OAKLAND PARK, FL 33411
CONSULTING ENGINEER
MECHANICAL
RIVA, KLEIN & TIMMONS
 4314 SW 72nd AVENUE
 MIAMI, FL 33155
CONSULTING ENGINEER
STRUCTURAL
CGASTALTECH
 1510 WADSWORTH AVENUE
 CORAL GABLES, FL 33146
CIVIL ENGINEERS

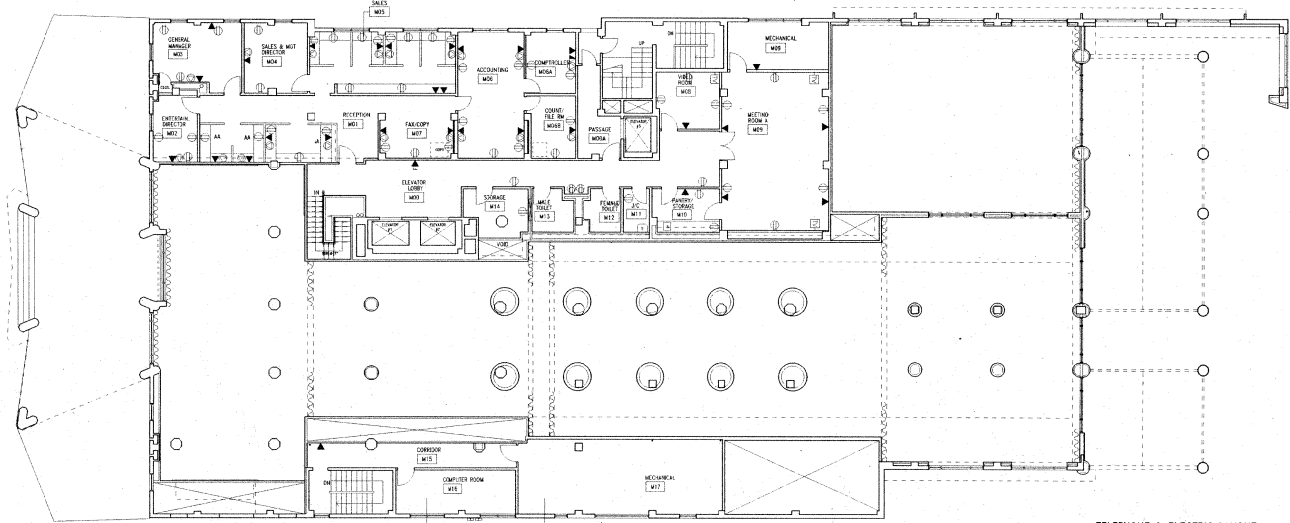
1685 HOTEL CORPORATION
 231 WEST 46th STREET
 NEW YORK, NY 10036
 OWNER

Delano Hotel
 1685 Collins Avenue
 Miami Beach, Florida

3-21-94 GENERAL REVISIONS
 10 DATE REVISION
 11th FLOOR
 GUEST SUITES
 DATE 7-1-94
 SCALE: 1/8" = 1'-0"
 DRAWING NUMBER
A 106



REFLECTED CEILING PLAN



TELEPHONE & ELECTRIC LAYOUT

- LEGEND
- CEILING MOUNTED LIGHT FIXTURE
 - WALL MOUNTED LIGHT FIXTURE
 - CEILING MOUNTED WALL SWITCH
 - WALL MOUNTED SWITCH
 - WALL MOUNTED SPREADER HEAD
 - SPREADER HEAD
 - CABLE TRAY
 - SMOKE DETECTOR
 - CEILING MOUNTED JUNCTION BOX
 - THREE LIGHT FIRE SERVICE
 - FIRE PULL BOX
 - CEILING MOUNTED SPEAKER
 - ▶ TELEPHONE
 - ▶ HOUSE TELEPHONE
 - ▶ PUBLIC TELEPHONE
 - ▶ VOICE / DATA LINE
 - ▶ POINT OF SALE
 - ▶ HVAC DIFFUSER-SUPPLY
 - ▶ HVAC DIFFUSER-RETURN
 - ▶ WALL MOUNTED HVAC DIFFUSERS
 - ▶ OPERATIONAL LIST
 - ▶ SMOKE

STARCK
 3 RUE DE LA ROUETTE
 75011 PARIS, FRANCE
 TEL: 1-40-21-72-54
 INTERIOR DESIGNER

PMGArchitects
 156 FIFTH AVENUE
 NEW YORK, NY 10010
 TEL: 212-685-4474
 ARCHITECT

BEILLON ARCHITECT PA
 760 NW 107TH AVENUE
 MIAMI, FL 33172
 TEL: 305-584-1000
 CONSULTING ARCHITECT

STEVEN FELLER P.E. INC.
 2701 W. OAKLAND PARK BLVD
 OAKLAND PARK, FL 33311
 TEL: 305-486-1000
 MECHANICAL CONSULTING ENGINEER

RIVA, KLEIN & TIMMONS
 4914 SW 72nd AVENUE
 MIAMI, FL 33155
 TEL: 305-486-1000
 STRUCTURAL CONSULTING ENGINEER

COASTAL TECH
 1570 MADRIDA AVENUE
 CORAL GABLES, FL 33146
 TEL: 305-486-1000
 CIVIL ENGINEERS

1685 HOTEL CORPORATION
 215 WEST 48TH STREET
 NEW YORK, NY 10036
 212-685-1000
 OWNER

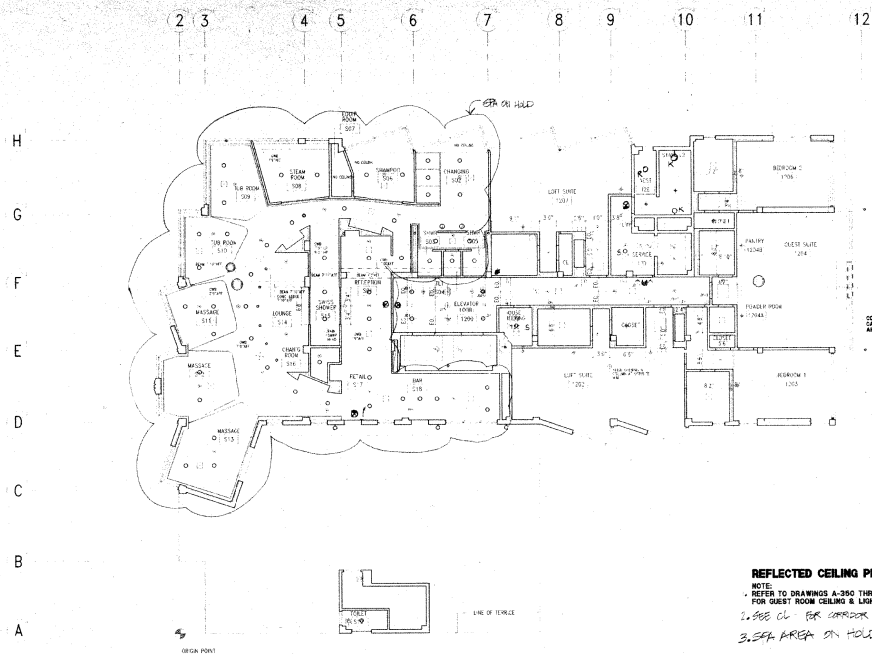
Delano Hotel
 1685 Collins Avenue
 Miami Beach, Florida
 RECEIVED
 DEC 18 1984
 ADMITTANCE PASSES

NO.	DATE	REVISION
1	7-1-84	GENERAL
2	7-1-84	REVISION

MEZZANINE FLOOR
 REFLECTED CEILING PLAN
 TELEPHONE & ELECTRIC LAYOUT

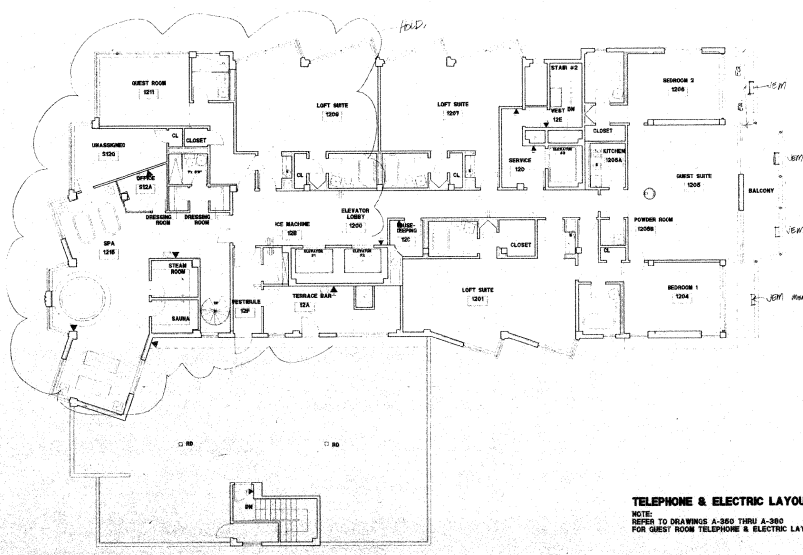
DATE: 7-1-84
 SCALE: 1/8" = 1'-0"
 DRAWING NUMBER:

A 113



REFLECTED CEILING PLAN
 NOTE:
 1. REFER TO DRAWINGS A-380 THRU A-383 (REVISED)
 FOR GUEST ROOM CEILING & LIGHTING LAYOUT
 2. SEE CL FOR CORRIDOR LIGHTING LAYOUT
 3. SPA AREA ON HOLD

- LEGEND
- CEILING MOUNTED LIGHT FIXTURE
 - WALL MOUNTED LIGHT FIXTURE
 - CEILING MOUNTED WALL SWITCH
 - WALL MOUNTED SWITCH
 - WALL MOUNTED GUBLET
 - RECESSED SPINNAKER HEAD
 - WALL MOUNTED SPINNAKER HEAD
 - SPINNAKER HEAD
 - SHALE GUBLET
 - SMOKE DETECTOR
 - CEILING MOUNTED DUCTWORK BOX
 - COORDINATED PRIMER
 - TELEPHONE
 - PUBLIC TELEPHONE
 - PUBLIC BEDROOM
 - VOICE MAIL LINE
 - POINT OF SALE
 - FLOOR DRAINAGE SUPPLY
 - FLOOR DRAINAGE RETURN
 - WALL MOUNTED HANG OFF TELEC
 - ADDITIONAL EIT
 - SPA



TELEPHONE & ELECTRIC LAYOUT
 NOTE:
 REFER TO DRAWINGS A-380 THRU A-383
 FOR GUEST ROOM TELEPHONE & ELECTRIC LAYOUT

STARCK
 3 RUE DE LA BOUTIQUE
 75011 PARIS, FRANCE
 TEL: 1-40-21-72-54
 INTERIOR DESIGNER

PMGArchitects
 156 FIFTH AVENUE
 NEW YORK, NY 10010
 ARCHITECT

BEILINSON ARCHITECT PA
 750 NW 107th AVENUE
 MIAMI, FL 33172
 CONSULTING ARCHITECT

STEVEN FELLER P.E. INC.
 2701 W. GARLAND PARK BLVD
 OAKLAND PARK, FL 33311
 CONSULTING ENGINEER

RIVA, KLEIN & TIMMONS
 4514 SW 22nd AVENUE
 MIAMI, FL 33155
 STRUCTURAL CONSULTING ENGINEER

COASTAL TECH
 1570 WINDYVALE AVENUE
 CORAL GABLES, FL 33146
 CIVIL ENGINEERS

1685 HOTEL CORPORATION
 235 WEST 48th STREET
 NEW YORK, NY 10036
 OWNER

Delano Hotel
 1685 Collins Avenue
 Miami Beach, Florida

NO.	DATE	REVISION
1	11-1-94	REVISIONS TO SPA
2	7-21-94	GENERAL REVISIONS
3		DATE REVISION

12th FLOOR
 PENTHOUSE SUITES, SPA &
 TELEPHONE & ELECTRIC LAYOUT
 DATE: 7-1-94
 SCALE: 1/8" = 1'-0"
 DRAWING NUMBER: **A 117**

G E N E R A L N O T E S

CONSTRUCTION NOTES

0020 BUILDING CODES

SOUTH FLORIDA BUILDING CODE - 1988 DADE COUNTY EDITION
CHAPTER 16-03 FLORIDA ADMINISTRATIVE CODE
FRAME DESIGNED AS PER ACI 318 - EXPOSED (10 MPH)

0030 STRUCTURAL LOADING

THE STRUCTURE HAS BEEN DESIGNED IN ACCORD WITH THE BUILDING CODE AND/OR MORE RESTRICTIVE REQUIREMENTS FOR LOADS AS GIVEN BELOW UNLESS SPECIFIC AREAS OF THE DRAWING SPECIFICALLY CALL FOR DIFFERENT LOADING CRITERIA.

GRAVITY LOADING	UNIFORM LIVE LOAD
ROOMS	40 PSF
PUBLIC AREAS	100 PSF

1051 DRAWING DIMENSIONS AND COORDINATION

DIMENSIONAL INFORMATION, PRICING, ALL DETAILS AND CONSTRUCTION SHALL BE BASED ON THE ENTIRE SET OF CONTRACT DOCUMENTS. COORDINATE THE REQUIREMENTS OF ALL PROFESSIONALS. USE INFORMATION FROM APPROVED SHOP DRAWINGS TO SUPPLEMENT CONTRACT DOCUMENTS WHERE NECESSARY. REPORT ANY DISCREPANCIES TO THE ARCHITECT PRIOR TO PROCEEDING.

WHERE CRITICAL DIMENSIONS ARE NOT SET FORTH ON THE PLANS, OR WHERE NEW WORK ADJOINS EXISTING CONSTRUCTION, OR WHERE ONE MATERIAL ADJOINS A PREVIOUSLY PLACED MATERIAL WITH A MORE RESTRICTIVE TOLERANCE THAN THE IN-PLACE MATERIAL, CONTRACTOR SHALL TAKE FIELD MEASUREMENTS AS REQUIRED TO COMPLETE SHOP DRAWINGS AND INSTALLATION. REPORT ANY DISCREPANCIES INCREASING IN BETWEEN FIELD MEASURED DIMENSIONS AND SCALED DRAWING DIMENSIONS TO ARCHITECT BEFORE PROCEEDING WITH WORK.

WHERE A LINE OF STRUCTURE, OPENING LOCATION, OR DIMENSION IS CRITICAL AND BASED ON THE REQUIREMENTS OF ANOTHER TRADE OR SUBCONTRACTOR, THAT SUBCONTRACTOR SHALL SUBMIT A SHOP DRAWING WITH THE REQUIRED DIMENSIONAL INFORMATION UPON WHICH THE CONTRACTOR SHALL BASE THE LAYOUT AND CONSTRUCTION. THIS PROCEDURE IS MANDATORY FOR CERTAIN WALL SYSTEMS, ARCHITECTURAL PRECAST SYSTEMS, AND ALL MECHANICAL AND ELECTRICAL OPENINGS.

THE ENGINEER WILL CLOUD OR OTHERWISE INDICATE REVISIONS TO THESE DOCUMENTS ONLY AFTER THEY HAVE BEEN ISSUED FOR CONSTRUCTION OR FINAL PRICING. CHANGES PRIOR TO THAT DATE WILL NOT BE CLOUDED. CHANGES AND/OR REVISIONS AFTER THE CONSTRUCTION OF FINAL PRICING SHALL BE CLOUDED IN AN ATTEMPT TO BRING TO THE CONTRACTORS ATTENTION ANY MAJOR ITEMS. HOWEVER, IT SHALL BE SOLELY THE CONTRACTORS RESPONSIBILITY TO COORDINATE THE PRICING AND CONSTRUCTION OF ALL REQUIREMENTS OF THESE DOCUMENTS, INCLUDING REVISIONS (FLAGGED OR UN-FLAGGED) WITH ALL OF HIS SUPPLIERS AND SUBCONTRACTORS.

0020 EARTHWORK

CONTRACTOR SHALL DETERMINE SITE AS NECESSARY, SO THAT ALL CONCRETE CAN BE PLACED IN THE DRY. ALL BACKFILL SHALL BE ACCOMPLISHED USING MATERIAL CONSISTING OF CRUSHED STONE AND/OR MATERIAL APPROVED BY THE GEOTECHNICAL ENGINEER. THE BACKFILL SHALL BE COMPACTED TO 90% OF MAXIMUM DENSITY AS DETERMINED BY ASTM D1557. NO BACKFILL MATERIAL SHALL BE PLACED AGAINST WALLS WHICH DO NOT HAVE PERMANENT FLOORS AT THE TOP AND BOTTOM WITHOUT PROVISION FOR ADEQUATE TEMPORARY BRACING OF THOSE WALLS. PROVIDE ADEQUATE EXCAVATION BRACING IN ACCORD WITH GEOTECHNICAL ENGINEER'S RECOMMENDATIONS TO MAINTAIN EXISTING FOOTINGS, UTILITIES, AND OTHER IMPROVEMENTS IN A SAFE CONDITION.

0210 STRUCTURAL FILL

FOUNDATIONS PLACED ON COMPACTED UNDERGROUND STRUCTURAL FILL HAVE BEEN DESIGNED FOR A BEARING OF 200 PSF. FILL TO BE COMPACTED TO 90% OF MAXIMUM DENSITY AS DETERMINED BY ASTM D1557. PLACE FILL IN LAYERS OF 4" THICK MAXIMUM AND UNDER THE STRICT SUPERVISION OF A GEOTECHNICAL ENGINEER. FILL TO BE TESTED TO VERIFY COMPACTION.

0110 FORMWORK

CONTRACTOR SHALL DESIGN AND ERECT FORMWORK IN STRICT COMPLIANCE WITH ACI 308.0. SEE TYPICAL DETAILS FOR CONCRETE REQUIREMENTS. CONTRACTOR SHALL COORDINATE ALL OPENINGS AS REQUIRED FOR OTHER TRADES. OPENINGS WERE SHOWN ON THE STRUCTURAL DRAWINGS ARE TO IDENTIFY DESIGN INTENT ONLY. THE SPECIFIC DIMENSIONS AND LOCATIONS SHALL BE DETERMINED AND APPROVED BY THE TRADE RECEIVING THE OPENING. PROVIDE CHAMBERS AT ALL CORNERS IN CONCRETE MEMBERS EXPOSED TO VIEW. FORMWORK TO REMAIN IN PLACE UNTIL CONCRETE HAS ATTAINED ENOUGH STRENGTH TO SUPPORT ALL DEAD LOADS PLUS A MINIMUM OF 50 PSF OF ADDITIONAL CONSTRUCTION LOAD. (SEE SPECIFICATIONS FOR ADDITIONAL REQUIREMENTS).

0320 CONCRETE REINFORCEMENT

WORK SHALL BE IN ACCORD WITH ACI 308.0R, ACT 318.88, ACI 318.89, CIP MANUAL OF STANDARD PRACTICE 1990, CIP31 REINFORCING BARS 1981, AND "MANUAL OF STANDARD PRACTICE" 1992. BARS SHALL CONFORM TO ASTM SPECIFICATIONS (A601). GRADE 60 WELDED WIRE FABRIC SHALL CONFORM TO ASTM A185. WELDED BAR MATS SHALL CONFORM TO ASTM A955. SEE TYPICAL DETAILS FOR BARS REQUIREMENTS. TOTAL STEEL AT LAP SECTIONS SHALL NOT EXCEED 50% THEREFORE MEMBERS WITH REINFORCING RATIO NOT EXCEEDING 4% MAY HAVE 10 BARS LAPPED. 5% MAY HAVE 12 BARS LAPPED, AND 6.0% CONCRETE SHALL BE IN ACCORD WITH ACT 419.18.41. WELDING SHALL BE IN ACCORD WITH AWS D1.4.7C AND PERFORMED ONLY UNDER DIRECT SUPERVISION OF OWNERS REPRESENTATIVE.

CONCRETE COVER REQUIRED AS FOLLOWS:

CAST AGAINST AND EXPOSED TO WEATHER	COVER
#4 AND LARGER	2"
#5 AND SMALLER	1 1/2"
SLABS AND WALLS - NO WEATHER EXPOSURE	1"
2 HOUR FIRE RATING AND LESS	1 1/2"
3 HOUR FIRE RATING AND MORE	2"
JOISTS - NO WEATHER EXPOSURE	1"
1 HOUR FIRE RATING	1 1/2"
2 HOUR FIRE RATING	2"
3 HOUR FIRE RATING AND MORE	2 1/2"
COLUMNS AND BEAMS - THIS OR STUBBERS	1 1/2"

REBAR

BAR COMP. SIZE	VERTICAL TENSION	HORIZONTAL TENSION	HOOKED BAR TENSION	REINFORCEMENT SPEC. GENERAL
#4	1-1/2	1-1/2	1-1/2	0.4
#4-1/2	1-1/2	1-1/2	1-1/2	0.4
#5	1-1/2	1-1/2	1-1/2	0.4
#5-1/2	1-1/2	1-1/2	1-1/2	0.4
#6	1-1/2	1-1/2	1-1/2	0.4
#6-1/2	2-0	2-0	2-0	0.4
#7	2-0	2-0	2-0	0.4
#7-1/2	2-0	2-0	2-0	0.4
#8	2-0	2-0	2-0	0.4
#8-1/2	2-0	2-0	2-0	0.4
#9	2-0	2-0	2-0	0.4
#9-1/2	2-0	2-0	2-0	0.4
#10	2-0	2-0	2-0	0.4
#10-1/2	2-0	2-0	2-0	0.4
#11	3-0	3-0	3-0	0.4
#11-1/2	3-0	3-0	3-0	0.4

3300 CAST-IN-PLACE CONCRETE

TO BE MIXED AND PLACED IN ACCORDANCE WITH ACI 308.4. ALL REINFORCED CONCRETE TO HAVE 28 DAY COMPRESSIVE STRENGTHS AS FOLLOWS:
ALL STRUCTURAL ELEMENTS FC = 4000 PSI UNLESS NOTED OTHERWISE

0360 GROUT

GROUTING IS CLASSIFIED AS PRECISION GROUTING FOR SUPPORT OF OPERATING MACHINE BASES, EQUIPMENT SUPPORT TO THERMAL MOVEMENT, AND BASE PLATES, BEARING PLATES, AND EXPANSION BEARINGS FOOTING. IN AT LEAST DIMENSION. ALL OTHER GROUTING MAY BE "ORDINARY GROUTING". METALLIC AGGREGATE GROUT MAY BE USED ONLY IN SPECIAL APPLICATIONS NOT EXPOSED TO VIEW IN FINISHED BUILDING AREAS. USE "ORDINARY GROUT" ONLY WHERE SPECIFICALLY NOTED AS "CEMENT GROUT" ON DETAILS. USE NON-SHINK GROUT FOR ALL OTHER LOCATIONS. PRECISION GROUT SHALL CONFORM TO CRD-CALI-80 WHEN USED TO FILL CONCRETE JOINTS OR TO 25 MASONRY JOINT CODE METHOD. CRD-CALI-80 REQUIRED 28 DAY STRENGTHS SHALL BE AS FOLLOWS:

CEMENT GROUT	1800 PSI
NON-SHINK GROUT	3000 PSI
PRECISION GROUT	6000 PSI

0420 CONCRETE UNIT MASONRY

ALL MASONRY CONSTRUCTION TO BE IN ACCORDANCE WITH SPECIFICATION FOR CONCRETE MASONRY CONSTRUCTION, ACT 53-176 (REV 1985) AND ALL APPLICABLE LOCAL BUILDING CODE PROVISIONS. ALL MASONRY WALLS TO BE CONSTRUCTED ENTIRELY OF UNITS CONFORMING TO ASTM C 90 AND REINFORCED WITH #4 GAGGLED TYPE HORIZONTAL REINFORCING LOCATED AT 16" O.C. ALL MASONRY TO BE LAID IN TYPE "X" MORTAR (100 PSI ON JOB) WITH FULL HEAD AND BED JOINTS. ALL MASONRY CONSTRUCTION TO BE EITHER BRICK OR BLOCK. THE COLUMN MEMBERS OR TIE TO FRAME BY EXTENDING HORIZONTAL JUNT REINFORCING A MINIMUM OF 4" INTO CONCRETE TIE COLUMN.

420 REINFORCED UNIT MASONRY

ALL REINFORCED MASONRY CONSTRUCTION SHALL BE IN ACCORD WITH APPLICABLE PROVISIONS OF CONCRETE REINFORCEMENT. CAST-IN-PLACE CONCRETE AND REINFORCED CONCRETE MASONRY VERTICAL REINFORCING SHALL ANCHOR INTO REINFORCED CONCRETE MEMBERS AT LEAST 12" AND LENGTHS 1/8" OR DEPTH PLUS A STANDARD HOOK. LAPS WITH REINFORCED MASONRY SHALL BE ACCORDING TO THE MIDDLE OF MASONRY UNITS. ALL VERTICAL CELLS AND BEAMS WITH REINFORCING SHALL BE FILLED WITH COARSE GROUT CONSISTING OF 3000 PSI CONCRETE, WITH #4 COARSE AGGREGATE. USE HIGH-STRENGTH (SUPERASTAZIONE) WHERE HEIGHT OF LIFT EXCEEDS 4'. WHERE HEIGHT OF OPEN CELL EXCEEDS 6' USE HIGH-SETTLE TECHNIQUE WHICH REQUIRES A CLEAN-OUT DRAINING AT THE BOTTOM OF ALL CELLS AND PLACING THE GROUT IN MAXIMUM 4' LIFTS WITH A 10 TO 20 TO 1 TAPER. ALL VERTICAL CELLS AND EXTERIOR WALLS TO BE REINFORCED WITH #5@4" O.C. VERTICAL I.I.C. ON DRAWINGS.

0505 WELDING

ALL WELDING TO BE IN ACCORDANCE WITH THE OF THE AMERICAN WELDING SOCIETY (AWS) "STRUCTURAL WELDING CODE-STEEL" (D1.1) 1986 AND AS PROCESSED. MINIMUM PREHEAT AND INTERPASS WELDING ELECTRODES WELDING ACCORDANCE WITH THE AWS SPECIFICATIONS. ANY STRUCTURAL STEEL DAMAGED IN WELDING TO BE REPLACED OR ACCEPTABLY RECONSTRUCTED. ALL FILL PENETRATION GROOVE WELDS TO BE SUBJECT TO RADIOGRAPHIC, MAGNETIC PARTICLE, ULTRASONIC, AND LIQUID PENETRANT INSPECTION CONDUCTED BY AN INDEPENDENT TESTING AGENCY PAID BY THE OWNER.

5120 STRUCTURAL STEEL

ALL STRUCTURAL STEEL SHALL BE DETAILLED, FABRICATED AND SHIPPED IN ACCORDANCE WITH THE LATEST EDITION OF THE AMERICAN INSTITUTE OF STEEL CONSTRUCTION (AISC) SPECIFICATIONS FOR THE DESIGN, FABRICATION AND ERECTION OF STRUCTURAL STEEL FOR BUILDINGS. STRUCTURAL STEEL TO CONFORM TO THE FOLLOWING:

- SHAPES & PLATES - ASTM A 36
- PIPE - ASTM A 53 GRADE B
- TUBES - ASTM A 500 GRADE B

ALL SHOP AND FIELD CONNECTIONS SHALL BE MADE WITH ASTM A572 HIGH STRENGTH BOLTS FOR WELDING.

0510 METAL STAIRS

STACK STEEL STAIR SYSTEM SHALL BE DESIGNED AND DETAILLED BY THE SUPPLIER. DESIGN LOADS SHALL BE 100 PSF UNIFORM OR 300 APPLIED TO ANY 4' X 8' AREA, WHICHEVER CONTROLS. PROVIDE DETAILS SHOWN THAT STAIR CAN BE ASSEMBLED AND INSTALLED IN PROGRESS. PROVIDE DETAILS WITH ADJACENT WORK. TREADS AND LANDINGS SHALL HAVE NOT LESS THAN 7" NOM MORE THAN 3" OF CONCRETE FILL FOR WALKING SURFACES. MEET ALL APPLICABLE LOCAL BUILDING CODES.

0610 STRUCTURAL WOOD FRAMING AND SHEATHING

ALL DIMENSION LIMBERS 2" AND LESS IN NOMINAL THICKNESS SHALL BE 2x SURFACED DRY AND STAMPED BY AN AGENCY CERTIFIED BY THE BOARD OF REVIEW OF THE AMERICAN LUMBER STANDARDS COMMITTEE AND MANUFACTURED IN ACCORD WITH PS 207. MEMBERS THICKER THAN 2" NOMINAL MAY BE SURFACED GREEN. MINIMUM SPECIES AND GRADES SHALL BE AS FOLLOWS:

USE	SPECIES	GRADE	Pb	Pf	Fp	E
ALL	SOUTHERN PINE KD	NO. 2	1400	825	90	1600,000

ALL STUDS AND HEADER SHOULDERS SHALL BE ONE PIECE BETWEEN PLATES AND/OR HEADERS. DO NOT USE BLOCKING BETWEEN HEADERS AND SHOULDER WITH SPOTTER COMPRESSION PERFORMED LATER THAN REQUIRED FOR HEADERS. DO NOT CUT LET IN BRACING INTO STUDS. PROVIDE OR GALVANIZED BUREAU-CLES IN ACCORD WITH LOCAL CODE AT ALL JOIST ANCHORAGES AND AT ALL FLOORS.

PLYWOOD SHALL CONFORM TO PERMA-BOND SHALL BE APA GRADE STAGED ROOF SHEATHING SHALL BE APA RATED SHEATHING EXP 1" 5/8" THICK. WALL SHEATHING SHALL BE APA RATED SHEATHING EXP 1" 3/8" FOR 16" O.C. STUDS OR SHEATHING SHALL BE APA RATED SHEATHING EXP 1" 3/8" FOR 12" O.C. STUDS OR SHEATHING SHALL BE APA RATED SHEATHING EXP 1" 3/8" FOR 16" O.C. FRAMING AND 1 1/2" FOR 24" O.C. FRAMING. CONFORM TO APA RECOMMENDATIONS FOR INSTALLATION OF PLYWOOD. TREAT ALL FRAMING IN CONTACT WITH CONCRETE OR MASONRY IN ACCORD WITH AMERICAN WOOD PRESERVATION BUREAU 1218 OR PROVIDE 1/4" THICK 2x DIAMETER BRAND-PAD BETWEEN CONCRETE OR MASONRY AND UNTREATED WOOD MEMBER.

6100 WOOD TRUSSES

THIS IS A SYSTEM OF CUSTOM ENGINEERED COMPONENTS AND CONNECTIONS IN ACCORD WITH ALL APPLICABLE STANDARDS OF TRUSS PLATE INSTITUTE, INCLUDING BUT NOT LIMITED TO TP-28 DESIGN SPECIFICATION FOR METAL PLATE CONNECTED WOOD TRUSSES AND OTHER DESIGN SPECIFICATIONS. CONFORMANCE WITH CODE OF STANDARD PRACTICE "BEST" BY HANDLING AND ERECTING WOOD TRUSSES. BEST BY BRACING WOOD TRUSSES. BEST BY QUALITY CONTROL. MANUAL AND THE DEPARTMENT OF PROFESSIONAL REGULATIONS GUIDELINES. THE ENTIRE SYSTEM INCLUDING ALL TRUSSES, CONNECTIONS BETWEEN TRUSSES, BRACING, TEMPORARY BRACING FOR ERECTION, ANCHORAGE, AND EMBEDMENTS SHALL BE DESIGNED BY A SPECIALTY ENGINEER. THE REVIEW OF ALL STRUCTURAL SUBMITTALS BY THE STRUCTURAL ENGINEER OF RECORD SHALL BE TO INSURE TRACHER INTENT HAS BEEN UNDERSTOOD AND THAT THE SPECIFIED CRITERIA HAVE BEEN USED. A COPY OF ALL STRUCTURAL SUBMITTALS WILL BE RETAIN FOR RECORD KEEPING PURPOSES ONLY. TRUSS CALCULATIONS, COMPONENT DRAWINGS, CONNECTION DETAILS AND ERECTION PLANS SHALL BE SIGNED AND SEALED BY TRUSS ENGINEER AND SUBMITTED TO LOCAL BUILDING OFFICIAL FOR APPROVAL. DESIGN TRUSSES FOR LOADS SHOWN ON PLANS. IN THE ABSENCE OF LOADS, USE APPLICABLE LOCAL CODE FOR LIVE LOAD AND ACTUAL WEIGHT OF BUILDING MATERIALS FOR DEADLOAD. USE PATTERNED AND PARTIAL SPAN LIVE LOADS WERE REQUIRED TO BE APPLIED MAXIMUM FORCE IN ANY TRUSS MEMBER. APPLY NET WIND UPLIFT IN ROOFS WHEN APPLICABLE TRUSS TOP CHORDS SHALL BE GROUP 1 SPECIES LIMBER. EXPOSED TO VIEW TRUSSES SHALL BE OF SELECT STRUCTURAL GRADE. ALL OTHER GRADE AND SPECIES ARE PERMITTED TO BE USED IN CONCEALED AREAS. COORDINATE WITH TRUSS DETAILS WITH ARCHITECTURAL DRAWINGS. FOR CONCEALED UP TRUSS TRUSSES WITH CONCEALED AREAS, TRUSSES SHALL BE IDENTIFIED BY THE MEMBER MODIFIED BY THE SUPPLIER FOR ERECTION. PROVIDE OR DIAMETER 1/4" THICK WEDGERS PAIR BETWEEN TRUSSES AND CONCRETE OR MASONRY BEARING SURFACES. PROVIDE OR GALVANIZED BUREAU-CLES ANCHORS DESIGNED FOR NET WIND UPLIFT AT ALL BEARINGS.

STARCK
3100 E. UNIVERSITY
SUITE 100
TEL: 305-291-77-54
INTERIOR DESIGNER

PMGArchitects
158 FIFTH AVENUE
NEW YORK, NY 10010
ARCHITECT

BELINSON ARCHITECT PA
265 NW 10TH AVENUE
MIAMI, FL 33135
CONSULTING ARCHITECT

STEVEN FELLER P.E. INC.
270 W. SAKALAO PARK BLVD
DARLINGTON PARK, FL 33311
CONSULTING ARCHITECT

MECHANICAL CONSULTING ENGINEER
RIVA, KLEIN & TIMMONS
4311 NW 75TH AVENUE
MIAMI, FL 33155
STRUCTURAL CONSULTING ENGINEER

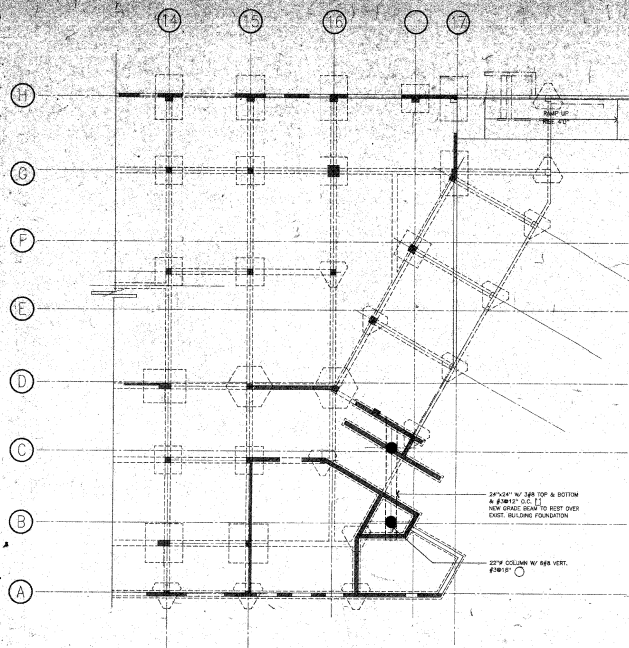
COASTAL TECH
1570 MADRID AVENUE
CORAL GABLES, FL 33146
CONSULTING ARCHITECT

1685 HOTEL CORPORATION
235 WEST 46th STREET
NEW YORK, NY 10018
OWNER

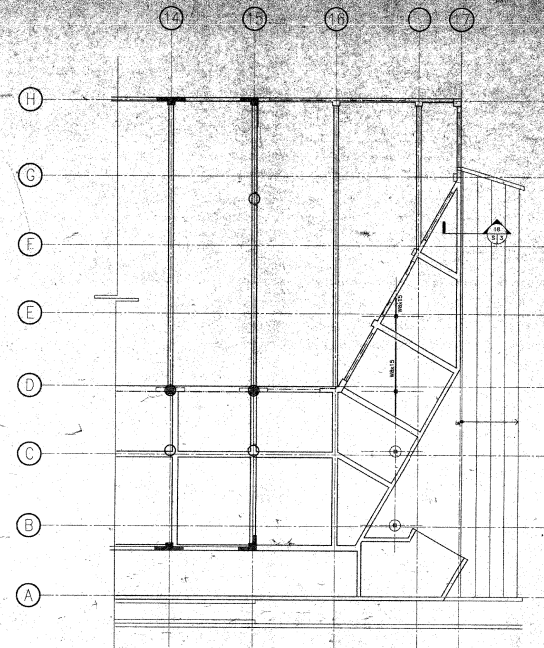
Delano Hotel
1685 Collins Avenue
Miami Beach, Florida

NO.	DATE	REVISION

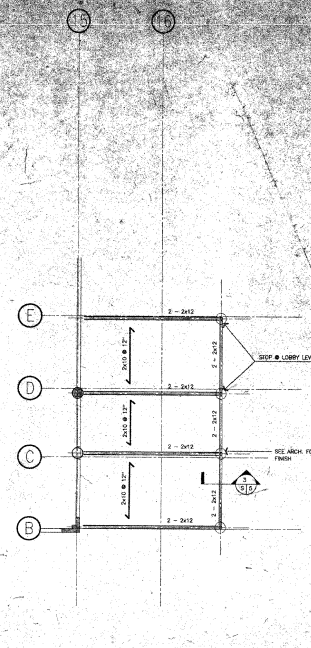
DATE: 11/27/10
DRAWN BY: S-0



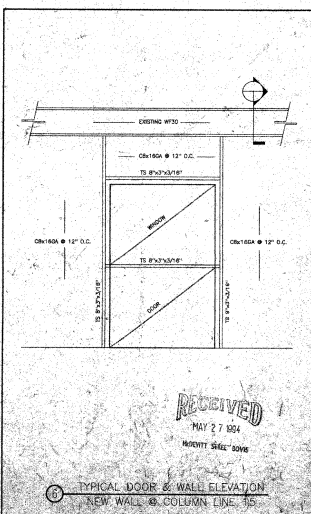
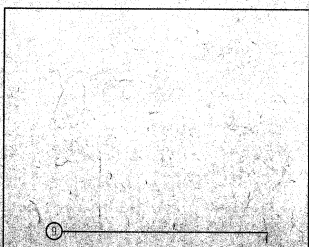
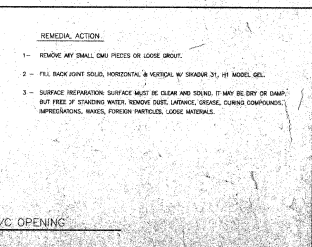
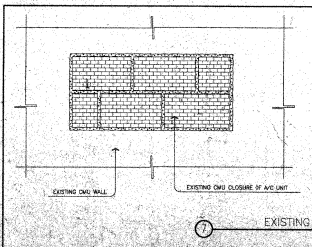
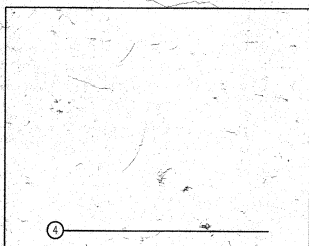
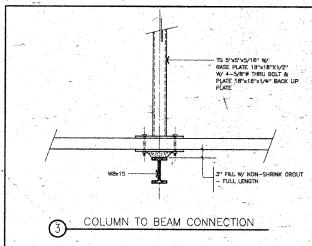
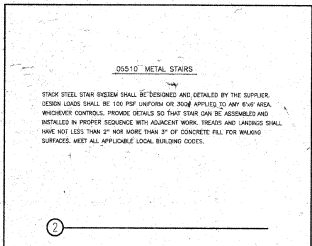
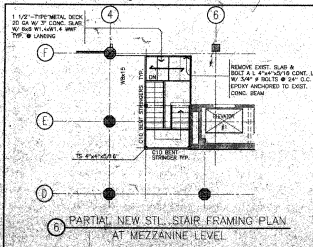
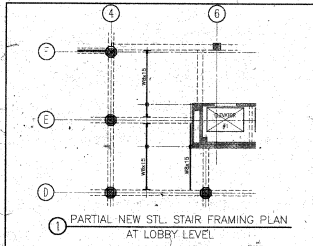
PARTIAL BASEMENT FOUNDATION PLAN
1/8"



FIRST FLOOR FRAMING PLAN
1/8"



TRELLIS FRAMING PLAN
1/8"



STARCK
T RIBE LA MOULTE
1001 10TH AVENUE
TEL: 407-321-3254
INTERIOR DESIGNER

PMGArchitects
156 NORTH HONOLE
HONOLULU, HI 96810
ARCHITECT

BEILINSON ARCHITECT, PA
700 WY 10TH AVENUE
MIAMI, FL 33172
CONSULTING ARCHITECT

STEVEN FELLER, P.E., INC.
2701 W. OAKLAND PARK BLVD.
OAKLAND PARK, FL 33311
MECHANICAL
CONSULTING ENGINEER

RVA, KLEIN & TIMMONS
4514 SW 7TH AVENUE
MIAMI, FL 33155
STRUCTURAL
CONSULTING ENGINEER

COASTAL TECH
1570 MADRID AVENUE
CORAL GABLES, FL 33146
CIVIL ENGINEERS

1685 HOTEL CORPORATION
235 WEST 46th STREET
NEW YORK, NY 10036
OWNER

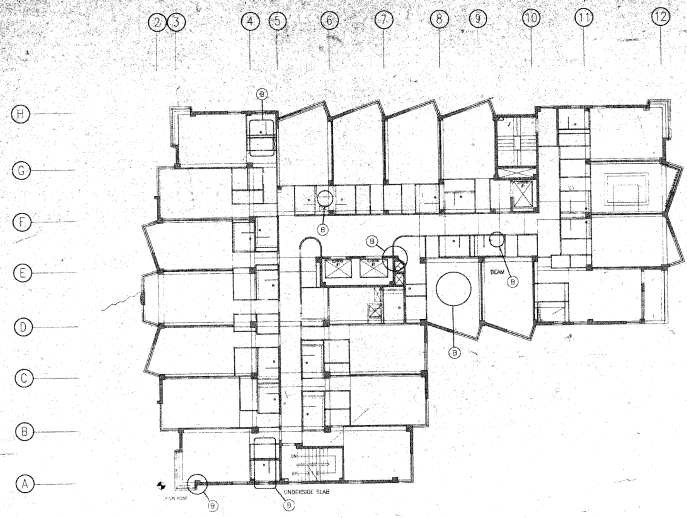
Delano Hotel

1685 Collins Avenue
Miami Beach, Florida

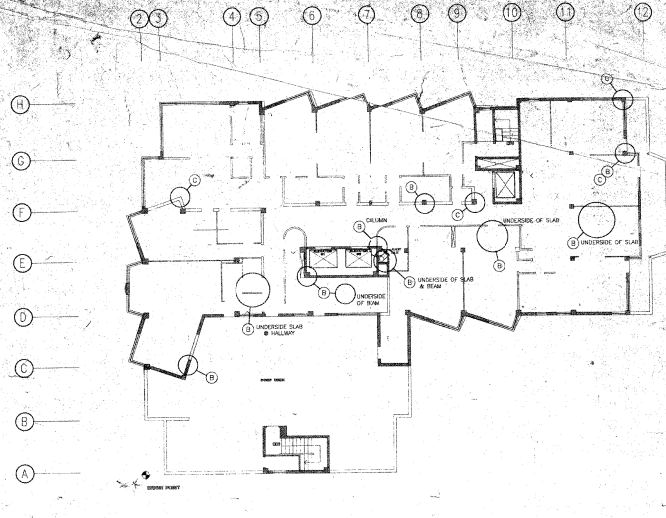
NO.	DATE	REVISION

TITLE: _____
DATE: MAY 27 2004
SCALE: AS SHOWN
DRAWING NUMBER: S-5

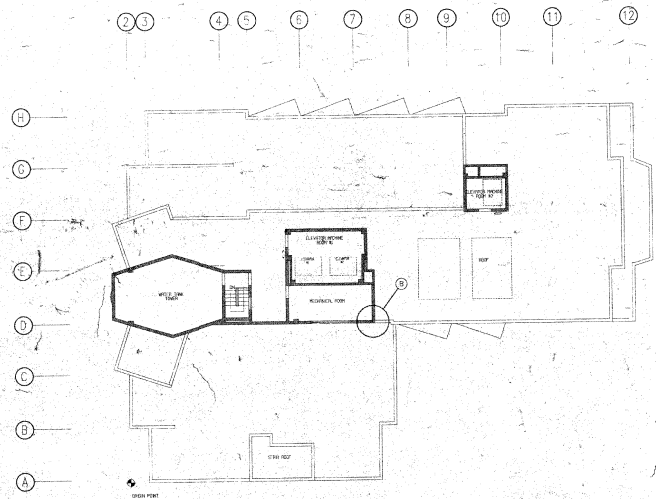
RECEIVED
MAY 27 2004
PROJECT SHEET 0006



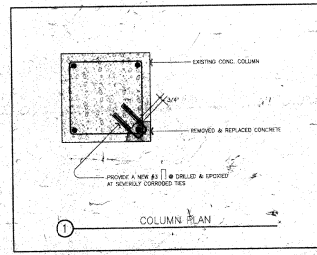
11TH LEVEL DEMOLITION PLAN
ADDITIONAL EXIST. CONCRETE REPAIR



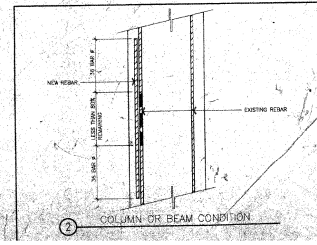
12TH LEVEL DEMOLITION PLAN
ADDITIONAL EXIST. CONCRETE REPAIR



MECH. PENTHOUSE & ROOF PLAN
ADDITIONAL EXIST. CONCRETE REPAIR



COLUMN PLAN



COLUMN OR BEAM CONDITION

REPAIR NOTES FOR BASEMENT COLUMNS

- USE PLAN FOR REPAIR SEQUENCE AND SHORE REQUIREMENT. COLUMNS MARKED WITH * NEED ADDITIONAL SHORES.
- ALL SHORES TO BE WELDED SHORES WITH 5000 PSI MINIMUM CAPACITY. ALL SHORES TO BE IN-PLACE PRIOR TO COMMENCEMENT OF REPAIR SEQUENCE.
- NUMBER INSIDE MECHANICAL KEYS TO EXISTING COLUMN REPRESENTS REPAIR SEQUENCE. THEREAFTER, FIRST REPAIR ALL COLUMNS MARKED 1, THEN ALL COLUMNS MARKED 2, ETC. HEADINGS LEFT BLANK MEANS COLUMN APPEAR SOUND. DURING REPAIR PERIOD THESE COLUMNS WILL BE INSPECTED AND REPAIRED, IF NEEDED AT GRABBER 10'.
- REPAIR METHOD:
 - A - CUT AWAY LOOSE, CRACKED AND SPALLED CONCRETE.
 - B - SAND BLAST EXPOSED STEEL REINFORCING TO REMOVE ALL OXIDATION.
 - C - APPLY EPOXY PRIMER TO REBAR. USE 3/4" DIA. WAGON EPOXY PRIMER OR EQUIV.
 - D - INSTALL NEW STEEL, SPICED OR BAR DIA. WAGON WHEAT ORIGINAL AREA HAS BEEN REPAIRED BY JOB OR MORE.
 - E - QUOTE REPAIR AREAS WITH P.C. IN 4000 PSI DESIGN MIX.
- REMOVE ANY EXISTING AREA ON THE OVER FLOORS THAT SHOW SIGN OF WATER PENETRATION FOR FURTHER INVESTIGATION.
- ADVISE CONTRACTOR TO REPAIR REBAR SECTION OF OVERHEAD SPALLED CONCRETE.

(A) SLIGHT
 (B) MODERATE
 (C) SEVERE

DATE: 11/17/04
 DRAWN: J. J. J.

STARCK
 3 RUE DE LA ROQUETTE
 75011 PARIS, FRANCE
 TEL: 33-1-47-71-71-54
 INTERIOR DESIGNER

PMC Architects
 156 FIRM AVENUE
 NEW YORK, NY 10010
 TEL: 212-693-8888
 ARCHITECT

DELLINSON ARCHITECT PA
 760 NY 107th AVENUE
 MAMI PL. 33170
 CONSULTING ARCHITECT

STEVEN FELLER P.E. INC.
 2701 W. GARLAND PARK BLVD
 OAKLAND PARK, FL 33311
 TEL: 954-944-8888
 MECHANICAL CONSULTING ENGINEER

RIVA KLEIN & TIMMONS
 4874 SW 72nd AVENUE
 MIAMI, FL 33155
 TEL: 305-494-8888
 STRUCTURAL CONSULTING ENGINEER

COASTAL TECH
 1500 MADRID AVENUE
 CORAL GABLES, FL 33146
 TEL: 305-441-8888
 CIVIL ENGINEERS

1685 HOTEL CORPORATION
 235 WEST 45th STREET
 NEW YORK, NY 10036
 TEL: 212-693-8888
 OWNER

Delano Hotel
 1685 Collins Avenue
 Miami Beach, Florida

NO.	DATE	REVISION
1		
2		
3		
4		
5		
6		
7		
8		
9		
10		
11		
12		

DRAWING NUMBER: S-6
 SCALE: 1/8" = 1'-0"
 DATE: 11/17/04

I. GENERAL DISPOSITIONS APPLICABLE CODES:

A. ALL WORK SHALL CONFORM TO DADE COUNTY PUBLIC WORKS DEPARTMENT'S "STANDARD AND DRAINAGE REGULATIONS AND SPECIFICATIONS" AND THE CITY OF MIAMI BEACH...

B. ALL ELEVATIONS REFER TO NADAL GEODETIC VERTICAL DATUM OF 1929 AND ARE EXPRESSED IN FEET.

C. PRIOR TO EXCAVATION, CONTRACTOR SHALL VERIFY THE LOCATION, DEPTH AND HORIZONTALITY OF ALL EXISTING UTILITIES IN ORDER TO AVOID COLLISIONS WITH THE PROPOSED UTILITY IMPROVEMENTS.

D. ALL CONCRETE FOR STRUCTURES SHALL BE A MINIMUM OF 3000 PSI AND 4" THICK AT EXTERIORS. ALL STRUCTURES TO BE FINISHED PER CITY CITY SPECIFICATIONS.

E. MATERIAL SHALL HAVE A MINIMUM BEARING RATIO (B.R.) LESS THAN 100 AND CALCIUM HYDROXIDE CONTENT OF 10%.

F. FINISH FLOOR ON BASE COURSE SHALL MEET THE FLORIDA DEPARTMENT OF TRANSPORTATION'S STANDARD SPECIFICATIONS FOR CONSTRUCTION OF ROADWAYS.

G. ANY EXISTING PAVEMENT MARKING OR SIGNAGE WHICH IS IN CONFLICT WITH THIS PLAN IS TO BE REMOVED OR REISED TO MATCH NEW CONSTRUCTION CONDITIONS.

H. PRECONSTRUCTION RESPONSIBILITIES: UPON THE RECEIPT OF THE "NOTICE TO PROCEED" THE CONTRACTOR SHALL CONTACT THE ENGINEER OF RECORD FOR THE CITY AND REQUEST A PRECONSTRUCTION CONFERENCE TO INCLUDE ALL INVOLVED GOVERNMENTAL AGENCIES, UTILITY OWNERS, AND THE ENGINEER OF RECORD.

I. THE CONTRACTOR SHALL OBTAIN AN UNCLASSED CERTIFICATION NUMBER AT LEAST 48 HOURS PRIOR TO BEGINNING ANY EXCAVATION. CALL 1-800-432-4770.

J. ALL UTILITY EGRESS ARE TO BE REVEALED PRIOR TO CONSTRUCTION. THE LOCATION OF EXISTING UTILITIES AS SHOWN ON CONSTRUCTION DRAWINGS ARE DESIGNED FROM AVAILABLE RECORDS. THE ENGINEER ASSUMES NO RESPONSIBILITY FOR THE ACCURACY OF THE UTILITIES SHOWN ON ANY PLANSET. THE CONTRACTOR SHALL VERIFY THE LOCATION AND DEPTH OF EXISTING UTILITIES PRIOR TO CONSTRUCTION TO AVOID COLLISIONS WITH THE PROPOSED CONSTRUCTION. UPON EXCAVATION, THE CONTRACTOR SHALL IMMEDIATELY NOTIFY THE ENGINEER OF RECORD SO THAT A UTILITY CONSTRUCTION METHOD MAY BE ADVISED.

K. INSPECTIONS: THE CONTRACTOR SHALL NOTIFY THE UTILITIES AND PUBLIC WORKS DEPARTMENT OF THE CITY OF MIAMI BEACH AND THE ENGINEER OF RECORD AT LEAST 24 HOURS PRIOR TO BEGINNING ANY EXCAVATION. THE CONTRACTOR SHALL NOTIFY THE ENGINEER OF RECORD AT LEAST 24 HOURS PRIOR TO BEGINNING ANY EXCAVATION.

L. MAINTENANCE OF TRAFFIC IN THE PUBLIC RIGHTS-OF-WAY SHALL BE IN ACCORDANCE WITH MUTCD AND THE FLORIDA DEPARTMENT OF TRANSPORTATION.

M. NO TRENCHES AND HOLES ADJACENT TO ROADWAYS OR SIDEWALKS SHALL BE PROTECTED MARKED AND BARRICADED TO ASSURE THE SAFETY OF BOTH VEHICULAR AND PEDESTRIAN TRAFFIC.

N. NO TRENCHES OR HOLES DEEPER THAN 18 INCHES OR DEEPER THAN 18 INCHES SHALL BE LEFT OPEN DURING NIGHT HOURS WITHOUT EXPRESS PERMISSION OF THE CITY OF MIAMI BEACH PUBLIC WORKS DEPARTMENT.

O. TEMPORARY FACILITIES: DURING CONSTRUCTION THE PROJECT SITE AND ALL ADJACENT AREAS SHALL BE MAINTAINED IN A NEAT AND CLEAN MANNER AND UPON FINAL CLEAN-UP, THE PROJECT SITE SHALL BE LEFT CLEAR OF ALL SURPLUS MATERIAL OR TRASH. THE PAVED AREAS SHALL BE REPLACED WITH BROOM FINISH.

P. THE CONTRACTOR SHALL RESTORE OR IMPROVE WHEN AS DIRECTED ANY PUBLIC OR PRIVATE PROPERTY DAMAGED BY THE EXCAVATION, LENGTH AND WIDTH OF THE EXCAVATION SHALL BE RESTORED TO ORIGINAL OR BETTER. TO THE END, THE CONTRACTOR SHALL BE RESPONSIBLE FOR ALL NECESSARY MARKING, SIGNAGE, WALKS AND LANDSCAPING WORK. SUITABLE MATERIALS AND METHODS SHALL BE USED FOR SOIL RESTORATION.

Q. WHERE MATERIAL OR DEBRIS HAS WASHED OR FLOODED INTO OR HAS BEEN PLACED IN WATERWAYS, DITCHES, CATCHMENTS, OR ELEVATIONS AS A RESULT OF THE CONTRACTOR'S OPERATIONS, SUCH MATERIAL OR DEBRIS SHALL BE REMOVED AND SATISFACTORILY DISPOSED OF DURING THE PROGRESS OF THE WORK AND THE AREA SHALL BE REPAIRED AND RECONSTRUCTED.

R. PROJECT CLOSURE: ALL PREPARED MONUMENTS OR PERMANENT REFERENCE MONUMENTS (OWN) REMOVED OR DAMAGED BY THE CONTRACTOR SHALL BE REPLACED OR RECONSTRUCTED BY A STATE-REGISTERED LAND SURVEYOR AT THE CONTRACTOR'S EXPENSE. ALL UNPAID SURVEY FEES SHALL BE RESTORED TO A CONDITION EQUAL TO OR BETTER THAN THAT WHICH EXISTED PRIOR TO CONSTRUCTION.

S. PROJECT RECORD DOCUMENTATION: DURING THE DAILY PROGRESS OF THE WORK, THE CONTRACTOR SHALL RECORD ON A SHEET CONSTRUCTION INFORMATION INCLUDING LOCATION, LENGTH AND ELEVATION OF ANY FACILITY NOT BUILT EXACTLY ACCORDING TO PLANS.

T. UPON COMPLETION OF EXCAVATION, RESTORATION AND LANDSCAPE WORK, THE CONTRACTOR SHALL SUBMIT TO THE ENGINEER OF RECORD A COMPLETE SET OF ALL "AS-BUILT" CONTACT DRAWINGS. THESE DRAWINGS SHALL BE MARKED TO SHOW "AS-BUILT" CONTACTS, DIMENSIONS, AND DIMENSIONS, LOCATIONS AND ELEVATIONS OF ALL IMPROVEMENTS.

U. "AS-BUILT" INFORMATION ON DRAINAGE SYSTEMS MUST CONTAIN LOCATION OF SERVICE LATERALS, STORMWATER MAINS AND SERVICE LATERALS.

V. ALL "AS-BUILT" INFORMATION ON ELEVATIONS SHALL BE CERTIFIED BY A REGISTERED LAND SURVEYOR.

W. EXCAVATION AND RESTORATION: ALL EXCAVATED AND OTHER UNDESIRABLE MATERIAL SHALL BE REMOVED UNDER THESE ARTICLES FROM ANY UTILITY CONSTRUCTION.

X. EXISTING UTILITIES SHALL BE PROTECTED AND MAINTAINED AS DIRECTED BY THE ENGINEER OF RECORD.

Y. ALL EXISTING UTILITIES SHALL BE PROTECTED AND MAINTAINED AS DIRECTED BY THE ENGINEER OF RECORD.

Z. ALL EXISTING UTILITIES SHALL BE PROTECTED AND MAINTAINED AS DIRECTED BY THE ENGINEER OF RECORD.

AA. ALL EXISTING UTILITIES SHALL BE PROTECTED AND MAINTAINED AS DIRECTED BY THE ENGINEER OF RECORD.

AB. ALL EXISTING UTILITIES SHALL BE PROTECTED AND MAINTAINED AS DIRECTED BY THE ENGINEER OF RECORD.

AC. ALL EXISTING UTILITIES SHALL BE PROTECTED AND MAINTAINED AS DIRECTED BY THE ENGINEER OF RECORD.

AD. ALL EXISTING UTILITIES SHALL BE PROTECTED AND MAINTAINED AS DIRECTED BY THE ENGINEER OF RECORD.

AE. ALL EXISTING UTILITIES SHALL BE PROTECTED AND MAINTAINED AS DIRECTED BY THE ENGINEER OF RECORD.

AF. ALL EXISTING UTILITIES SHALL BE PROTECTED AND MAINTAINED AS DIRECTED BY THE ENGINEER OF RECORD.

AG. ALL EXISTING UTILITIES SHALL BE PROTECTED AND MAINTAINED AS DIRECTED BY THE ENGINEER OF RECORD.

AH. ALL EXISTING UTILITIES SHALL BE PROTECTED AND MAINTAINED AS DIRECTED BY THE ENGINEER OF RECORD.

AI. ALL EXISTING UTILITIES SHALL BE PROTECTED AND MAINTAINED AS DIRECTED BY THE ENGINEER OF RECORD.

AJ. ALL EXISTING UTILITIES SHALL BE PROTECTED AND MAINTAINED AS DIRECTED BY THE ENGINEER OF RECORD.

AK. ALL EXISTING UTILITIES SHALL BE PROTECTED AND MAINTAINED AS DIRECTED BY THE ENGINEER OF RECORD.

AL. ALL EXISTING UTILITIES SHALL BE PROTECTED AND MAINTAINED AS DIRECTED BY THE ENGINEER OF RECORD.

AM. ALL EXISTING UTILITIES SHALL BE PROTECTED AND MAINTAINED AS DIRECTED BY THE ENGINEER OF RECORD.

AN. ALL EXISTING UTILITIES SHALL BE PROTECTED AND MAINTAINED AS DIRECTED BY THE ENGINEER OF RECORD.

AO. ALL EXISTING UTILITIES SHALL BE PROTECTED AND MAINTAINED AS DIRECTED BY THE ENGINEER OF RECORD.

AP. ALL EXISTING UTILITIES SHALL BE PROTECTED AND MAINTAINED AS DIRECTED BY THE ENGINEER OF RECORD.

AQ. ALL EXISTING UTILITIES SHALL BE PROTECTED AND MAINTAINED AS DIRECTED BY THE ENGINEER OF RECORD.

AR. ALL EXISTING UTILITIES SHALL BE PROTECTED AND MAINTAINED AS DIRECTED BY THE ENGINEER OF RECORD.

AS. ALL EXISTING UTILITIES SHALL BE PROTECTED AND MAINTAINED AS DIRECTED BY THE ENGINEER OF RECORD.

AT. ALL EXISTING UTILITIES SHALL BE PROTECTED AND MAINTAINED AS DIRECTED BY THE ENGINEER OF RECORD.

AU. ALL EXISTING UTILITIES SHALL BE PROTECTED AND MAINTAINED AS DIRECTED BY THE ENGINEER OF RECORD.

AV. ALL EXISTING UTILITIES SHALL BE PROTECTED AND MAINTAINED AS DIRECTED BY THE ENGINEER OF RECORD.

AW. ALL EXISTING UTILITIES SHALL BE PROTECTED AND MAINTAINED AS DIRECTED BY THE ENGINEER OF RECORD.

AX. ALL EXISTING UTILITIES SHALL BE PROTECTED AND MAINTAINED AS DIRECTED BY THE ENGINEER OF RECORD.

AY. ALL EXISTING UTILITIES SHALL BE PROTECTED AND MAINTAINED AS DIRECTED BY THE ENGINEER OF RECORD.

AZ. ALL EXISTING UTILITIES SHALL BE PROTECTED AND MAINTAINED AS DIRECTED BY THE ENGINEER OF RECORD.

BA. ALL EXISTING UTILITIES SHALL BE PROTECTED AND MAINTAINED AS DIRECTED BY THE ENGINEER OF RECORD.

BB. ALL EXISTING UTILITIES SHALL BE PROTECTED AND MAINTAINED AS DIRECTED BY THE ENGINEER OF RECORD.

BC. ALL EXISTING UTILITIES SHALL BE PROTECTED AND MAINTAINED AS DIRECTED BY THE ENGINEER OF RECORD.

BD. ALL EXISTING UTILITIES SHALL BE PROTECTED AND MAINTAINED AS DIRECTED BY THE ENGINEER OF RECORD.

BE. ALL EXISTING UTILITIES SHALL BE PROTECTED AND MAINTAINED AS DIRECTED BY THE ENGINEER OF RECORD.

BF. ALL EXISTING UTILITIES SHALL BE PROTECTED AND MAINTAINED AS DIRECTED BY THE ENGINEER OF RECORD.

BG. ALL EXISTING UTILITIES SHALL BE PROTECTED AND MAINTAINED AS DIRECTED BY THE ENGINEER OF RECORD.

BH. ALL EXISTING UTILITIES SHALL BE PROTECTED AND MAINTAINED AS DIRECTED BY THE ENGINEER OF RECORD.

BI. ALL EXISTING UTILITIES SHALL BE PROTECTED AND MAINTAINED AS DIRECTED BY THE ENGINEER OF RECORD.

BJ. ALL EXISTING UTILITIES SHALL BE PROTECTED AND MAINTAINED AS DIRECTED BY THE ENGINEER OF RECORD.

BK. ALL EXISTING UTILITIES SHALL BE PROTECTED AND MAINTAINED AS DIRECTED BY THE ENGINEER OF RECORD.

BL. ALL EXISTING UTILITIES SHALL BE PROTECTED AND MAINTAINED AS DIRECTED BY THE ENGINEER OF RECORD.

BM. ALL EXISTING UTILITIES SHALL BE PROTECTED AND MAINTAINED AS DIRECTED BY THE ENGINEER OF RECORD.

BN. ALL EXISTING UTILITIES SHALL BE PROTECTED AND MAINTAINED AS DIRECTED BY THE ENGINEER OF RECORD.

BO. ALL EXISTING UTILITIES SHALL BE PROTECTED AND MAINTAINED AS DIRECTED BY THE ENGINEER OF RECORD.

BP. ALL EXISTING UTILITIES SHALL BE PROTECTED AND MAINTAINED AS DIRECTED BY THE ENGINEER OF RECORD.

BQ. ALL EXISTING UTILITIES SHALL BE PROTECTED AND MAINTAINED AS DIRECTED BY THE ENGINEER OF RECORD.

BR. ALL EXISTING UTILITIES SHALL BE PROTECTED AND MAINTAINED AS DIRECTED BY THE ENGINEER OF RECORD.

BS. ALL EXISTING UTILITIES SHALL BE PROTECTED AND MAINTAINED AS DIRECTED BY THE ENGINEER OF RECORD.

BT. ALL EXISTING UTILITIES SHALL BE PROTECTED AND MAINTAINED AS DIRECTED BY THE ENGINEER OF RECORD.

BU. ALL EXISTING UTILITIES SHALL BE PROTECTED AND MAINTAINED AS DIRECTED BY THE ENGINEER OF RECORD.

BV. ALL EXISTING UTILITIES SHALL BE PROTECTED AND MAINTAINED AS DIRECTED BY THE ENGINEER OF RECORD.

BW. ALL EXISTING UTILITIES SHALL BE PROTECTED AND MAINTAINED AS DIRECTED BY THE ENGINEER OF RECORD.

BX. ALL EXISTING UTILITIES SHALL BE PROTECTED AND MAINTAINED AS DIRECTED BY THE ENGINEER OF RECORD.

BY. ALL EXISTING UTILITIES SHALL BE PROTECTED AND MAINTAINED AS DIRECTED BY THE ENGINEER OF RECORD.

BZ. ALL EXISTING UTILITIES SHALL BE PROTECTED AND MAINTAINED AS DIRECTED BY THE ENGINEER OF RECORD.

CA. ALL EXISTING UTILITIES SHALL BE PROTECTED AND MAINTAINED AS DIRECTED BY THE ENGINEER OF RECORD.

CB. ALL EXISTING UTILITIES SHALL BE PROTECTED AND MAINTAINED AS DIRECTED BY THE ENGINEER OF RECORD.

CC. ALL EXISTING UTILITIES SHALL BE PROTECTED AND MAINTAINED AS DIRECTED BY THE ENGINEER OF RECORD.

CD. ALL EXISTING UTILITIES SHALL BE PROTECTED AND MAINTAINED AS DIRECTED BY THE ENGINEER OF RECORD.

CE. ALL EXISTING UTILITIES SHALL BE PROTECTED AND MAINTAINED AS DIRECTED BY THE ENGINEER OF RECORD.

CF. ALL EXISTING UTILITIES SHALL BE PROTECTED AND MAINTAINED AS DIRECTED BY THE ENGINEER OF RECORD.

CG. ALL EXISTING UTILITIES SHALL BE PROTECTED AND MAINTAINED AS DIRECTED BY THE ENGINEER OF RECORD.

CH. ALL EXISTING UTILITIES SHALL BE PROTECTED AND MAINTAINED AS DIRECTED BY THE ENGINEER OF RECORD.

CI. ALL EXISTING UTILITIES SHALL BE PROTECTED AND MAINTAINED AS DIRECTED BY THE ENGINEER OF RECORD.

CJ. ALL EXISTING UTILITIES SHALL BE PROTECTED AND MAINTAINED AS DIRECTED BY THE ENGINEER OF RECORD.

CK. ALL EXISTING UTILITIES SHALL BE PROTECTED AND MAINTAINED AS DIRECTED BY THE ENGINEER OF RECORD.

CL. ALL EXISTING UTILITIES SHALL BE PROTECTED AND MAINTAINED AS DIRECTED BY THE ENGINEER OF RECORD.

CM. ALL EXISTING UTILITIES SHALL BE PROTECTED AND MAINTAINED AS DIRECTED BY THE ENGINEER OF RECORD.

CN. ALL EXISTING UTILITIES SHALL BE PROTECTED AND MAINTAINED AS DIRECTED BY THE ENGINEER OF RECORD.

CO. ALL EXISTING UTILITIES SHALL BE PROTECTED AND MAINTAINED AS DIRECTED BY THE ENGINEER OF RECORD.

CP. ALL EXISTING UTILITIES SHALL BE PROTECTED AND MAINTAINED AS DIRECTED BY THE ENGINEER OF RECORD.

CQ. ALL EXISTING UTILITIES SHALL BE PROTECTED AND MAINTAINED AS DIRECTED BY THE ENGINEER OF RECORD.

CR. ALL EXISTING UTILITIES SHALL BE PROTECTED AND MAINTAINED AS DIRECTED BY THE ENGINEER OF RECORD.

CS. ALL EXISTING UTILITIES SHALL BE PROTECTED AND MAINTAINED AS DIRECTED BY THE ENGINEER OF RECORD.

CT. ALL EXISTING UTILITIES SHALL BE PROTECTED AND MAINTAINED AS DIRECTED BY THE ENGINEER OF RECORD.

CU. ALL EXISTING UTILITIES SHALL BE PROTECTED AND MAINTAINED AS DIRECTED BY THE ENGINEER OF RECORD.

CV. ALL EXISTING UTILITIES SHALL BE PROTECTED AND MAINTAINED AS DIRECTED BY THE ENGINEER OF RECORD.

CW. ALL EXISTING UTILITIES SHALL BE PROTECTED AND MAINTAINED AS DIRECTED BY THE ENGINEER OF RECORD.

CX. ALL EXISTING UTILITIES SHALL BE PROTECTED AND MAINTAINED AS DIRECTED BY THE ENGINEER OF RECORD.

CY. ALL EXISTING UTILITIES SHALL BE PROTECTED AND MAINTAINED AS DIRECTED BY THE ENGINEER OF RECORD.

CZ. ALL EXISTING UTILITIES SHALL BE PROTECTED AND MAINTAINED AS DIRECTED BY THE ENGINEER OF RECORD.

DA. ALL EXISTING UTILITIES SHALL BE PROTECTED AND MAINTAINED AS DIRECTED BY THE ENGINEER OF RECORD.

DB. ALL EXISTING UTILITIES SHALL BE PROTECTED AND MAINTAINED AS DIRECTED BY THE ENGINEER OF RECORD.

DC. ALL EXISTING UTILITIES SHALL BE PROTECTED AND MAINTAINED AS DIRECTED BY THE ENGINEER OF RECORD.

DD. ALL EXISTING UTILITIES SHALL BE PROTECTED AND MAINTAINED AS DIRECTED BY THE ENGINEER OF RECORD.

DE. ALL EXISTING UTILITIES SHALL BE PROTECTED AND MAINTAINED AS DIRECTED BY THE ENGINEER OF RECORD.

DF. ALL EXISTING UTILITIES SHALL BE PROTECTED AND MAINTAINED AS DIRECTED BY THE ENGINEER OF RECORD.

DE. ALL EXISTING UTILITIES SHALL BE PROTECTED AND MAINTAINED AS DIRECTED BY THE ENGINEER OF RECORD.

DE. ALL EXISTING UTILITIES SHALL BE PROTECTED AND MAINTAINED AS DIRECTED BY THE ENGINEER OF RECORD.

DE. ALL EXISTING UTILITIES SHALL BE PROTECTED AND MAINTAINED AS DIRECTED BY THE ENGINEER OF RECORD.

DE. ALL EXISTING UTILITIES SHALL BE PROTECTED AND MAINTAINED AS DIRECTED BY THE ENGINEER OF RECORD.

DE. ALL EXISTING UTILITIES SHALL BE PROTECTED AND MAINTAINED AS DIRECTED BY THE ENGINEER OF RECORD.

DE. ALL EXISTING UTILITIES SHALL BE PROTECTED AND MAINTAINED AS DIRECTED BY THE ENGINEER OF RECORD.

DE. ALL EXISTING UTILITIES SHALL BE PROTECTED AND MAINTAINED AS DIRECTED BY THE ENGINEER OF RECORD.

DE. ALL EXISTING UTILITIES SHALL BE PROTECTED AND MAINTAINED AS DIRECTED BY THE ENGINEER OF RECORD.

DE. ALL EXISTING UTILITIES SHALL BE PROTECTED AND MAINTAINED AS DIRECTED BY THE ENGINEER OF RECORD.

DE. ALL EXISTING UTILITIES SHALL BE PROTECTED AND MAINTAINED AS DIRECTED BY THE ENGINEER OF RECORD.

DE. ALL EXISTING UTILITIES SHALL BE PROTECTED AND MAINTAINED AS DIRECTED BY THE ENGINEER OF RECORD.

DE. ALL EXISTING UTILITIES SHALL BE PROTECTED AND MAINTAINED AS DIRECTED BY THE ENGINEER OF RECORD.

STARCK
3000 BEECH BLVD
26TH FLOOR
MIAMI, FL 33135
TEL: 305-441-7174
WWW.STARCK.COM

PMGArchitects
11111 N. MIAMI AVENUE
SUITE 100
MIAMI, FL 33158
TEL: 305-441-7174

BELINSON ARCHITECT PA
780 NW 107th AVENUE
SUITE 100
DADE PARK, FL 33157
TEL: 305-441-7174

STEVEN FELDER P.E. INC.
2701 W. CAWLETT PARK BLVD.
DADE PARK, FL 33157
TEL: 305-441-7174

RIVA, KLEIN & TIMMONS
404 S. 27th AVENUE
SUITE 100
MIAMI, FL 33135
TEL: 305-441-7174

CONAST TECHNOLOGY
11520 MAGNOLIA AVENUE
SUITE 100
DADE PARK, FL 33158
TEL: 305-441-7174

1185 HOTEL CORPORATION
235 WEST 46th STREET
NEW YORK, NY 10036
TEL: 212-693-1234

Delano Hotel
1685 Collins Avenue
Miami Beach, Florida

GENERAL NOTES

- 1. ALL MATERIALS AND LABOR UNDER THIS PROJECT SHALL BE IN STRICT ACCORDANCE WITH THE REQUIREMENTS OF THE MIAMI DADE WATER & SEWER AUTHORITY DEPARTMENT AND SHALL CONFORM TO THE STANDARDS AND SPECIFICATIONS AVAILABLE AND ON FILE WITH THE DEPARTMENT.
- 2. COVER OVER WATER MAINS SHALL BE 4'-0" MINIMUM.
- 3. ALL WATERMAIN LINE VALVES SHALL BE INSTALLED EXTERIORLY WITH 12" RISER PIPES AND NUMBER 2 VALVE BOXES. ALL SERVICE VALVES SHALL BE INSTALLED EXTERIORLY WITH 6" RISER PIPES AND NUMBER 2 VALVE BOXES.
- 4. ALL WATER MAINS SHALL BE INSTALLED IN ACCORDANCE WITH THE MIAMI DADE WATER & SEWER AUTHORITY DEPARTMENT STANDARDS AND SPECIFICATIONS.
- 5. FIRE HOSE REQUIREMENTS (NUMBER & LOCATIONS) SHALL BE REQUIRED BY DADE COUNTY FIRE DEPARTMENT OR THE APPROPRIATE FIRE AGENCY WITH INSTALLATIONS IN ACCORDANCE WITH AUTHORITY DEPARTMENT STANDARDS.
- 6. THE CONTRACTOR MUST CALL MIAMI INSPECTION DIVISION TO ARRANGE FOR A PERMIT AND A PRE-CONSTRUCTION MEETING AND HOLDING PERMIT TO PROCEED START OF CONSTRUCTION.
- 7. EQUIPMENT OPERATOR SHALL REPORT ALL FACILITIES APPROVED BY THE DEPARTMENT.
- 8. ALL OTHER REQUIREMENTS OF THE PERMITTING AGENCY SHALL BE IN ACCORDANCE WITH THEIR REGULATIONS AND REQUIREMENTS.
- 9. WORK PERFORMED UNDER THIS PROJECT WILL NOT BE CONSIDERED AS COMPLETE UNTIL FINAL ACCEPTANCE OF THE SYSTEM BY THE DEPARTMENT AND UNTIL THE FOLLOWING DOCUMENTS ARE RECEIVED AND APPROVED BY THE CONTRACTOR:
 - 1. EXISTENCE, IF REQUIRED.
 - 2. CONTRACTOR'S REPORT AND RELEASE OF THE CONTRACT.
 - 3. CONTRACTOR'S LETTER OF WARRANTY (LETTER AGREEMENT).
 - 4. DEVELOPER'S CONTRACT BOND (LETTER AGREEMENT).
 - 5. "AS-BUILT" PLANS SHOWING EXACT LOCATIONS, DEPTHS, ETC. OF ALL WATER STRUCTURES AS LOCATED BY A LICENSED SURVEYOR, ALONG WITH TWO (2) PRINTS OF THE "AS-BUILT" WHICH MUST BE SIGNED AND SEALED BY A REGISTERED SURVEYOR OR ENGINEER OF RECORD AND ENDORSED BY THE CONTRACTOR.
- 10. ALL NEW CONSTRUCTION FROM EXISTING DEPARTMENT MAINS TO ARRANGE FOR A PERMIT AND A PRE-CONSTRUCTION MEETING AND HOLDING PERMIT TO PROCEED START OF CONSTRUCTION.
- 11. AN APPROVED PLANS AND EXISTING PLAN SET SHALL BE SUBMITTED TO MIAMI DADE WATER & SEWER AUTHORITY PRIOR TO APPROVAL OF WATER AND SEWER PERMIT PLANS UPON REVIEW.

DATE: 7-1-94
SCALE: 1" = 2'

FILE: 8800-0-02
PROJECT: 88-04-02
DATE: 7-1-94
PAGE: 3 OF 3