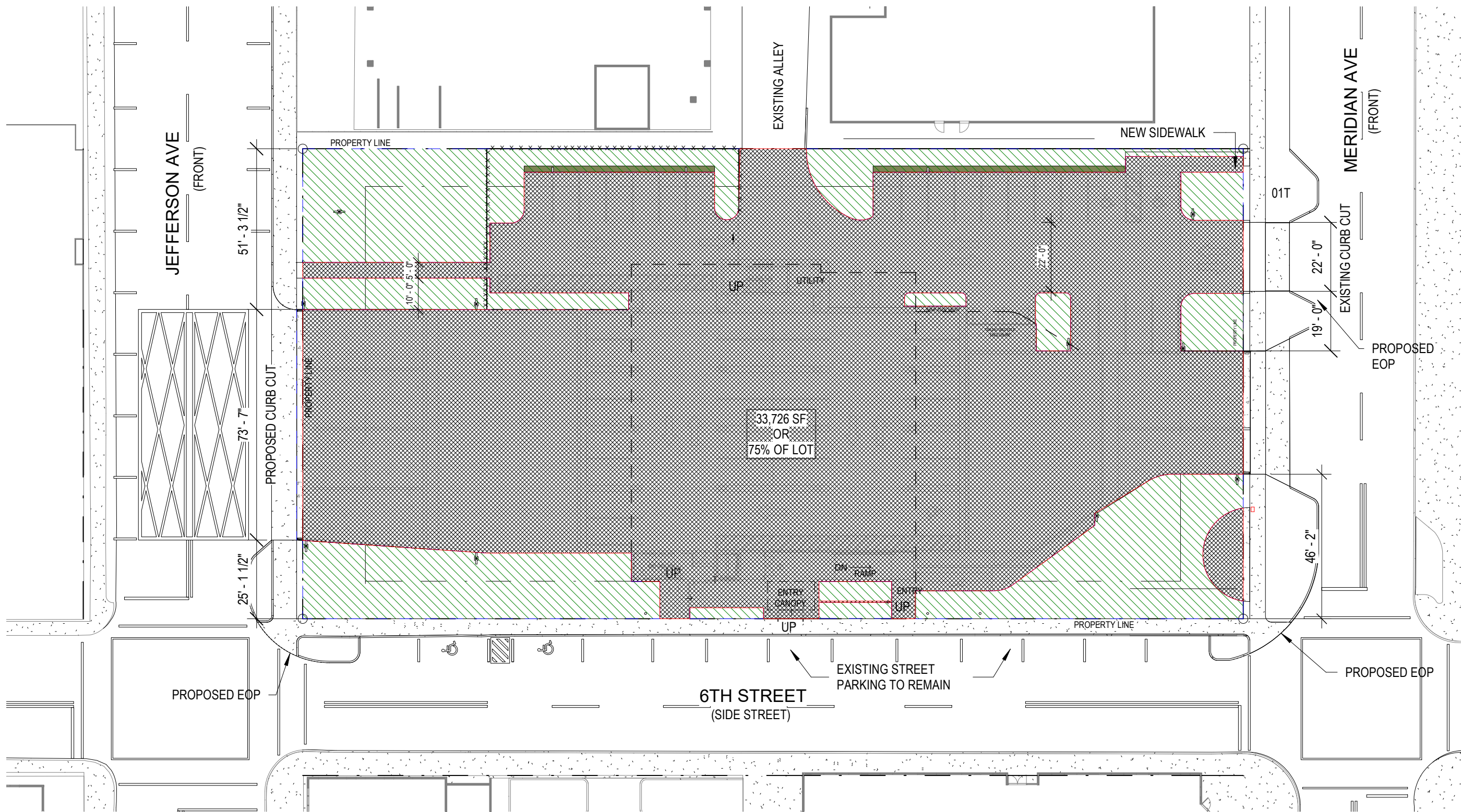


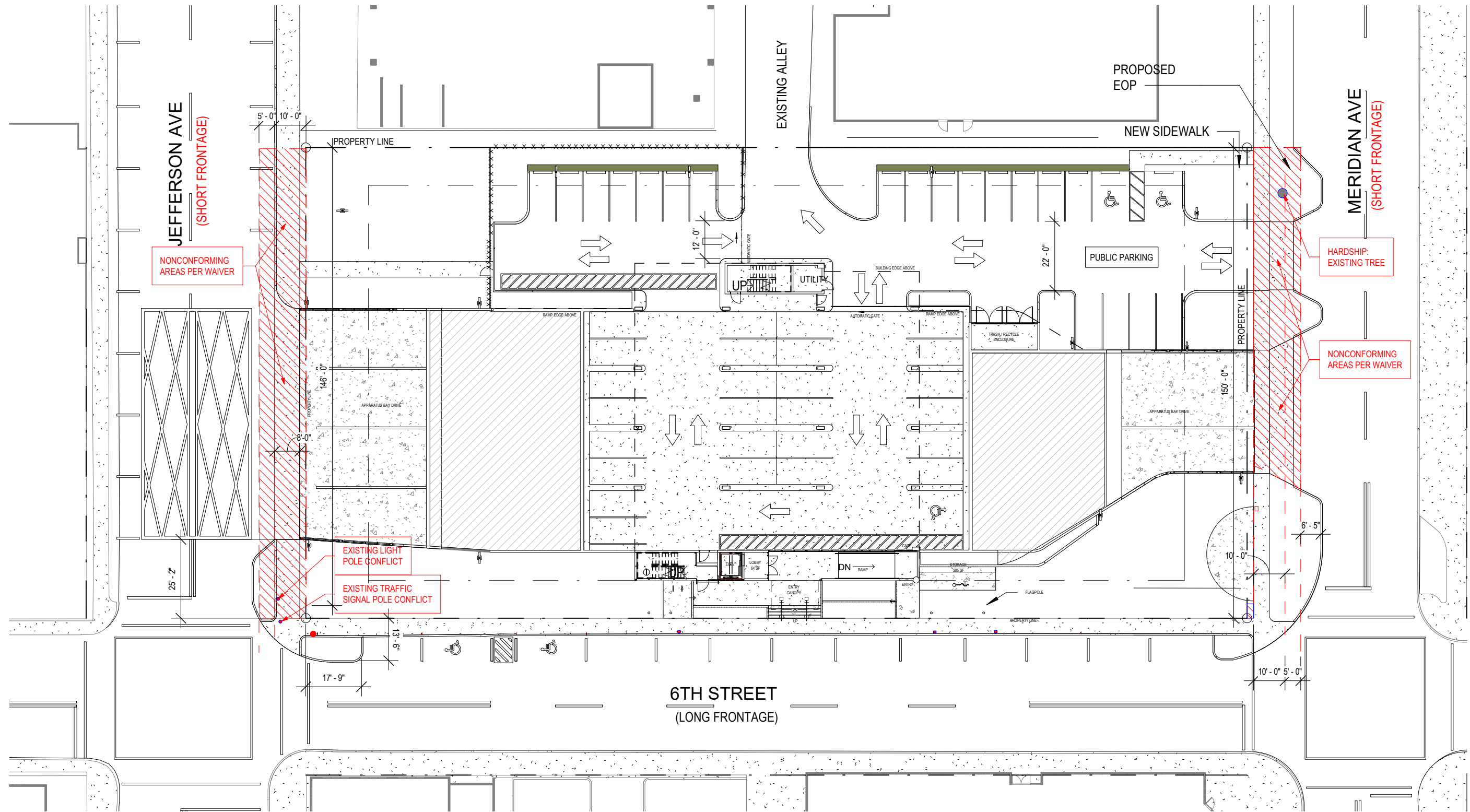
1 PARKING SETBACK WAIVER - 142-156(a)
 1/32" = 1'-0"





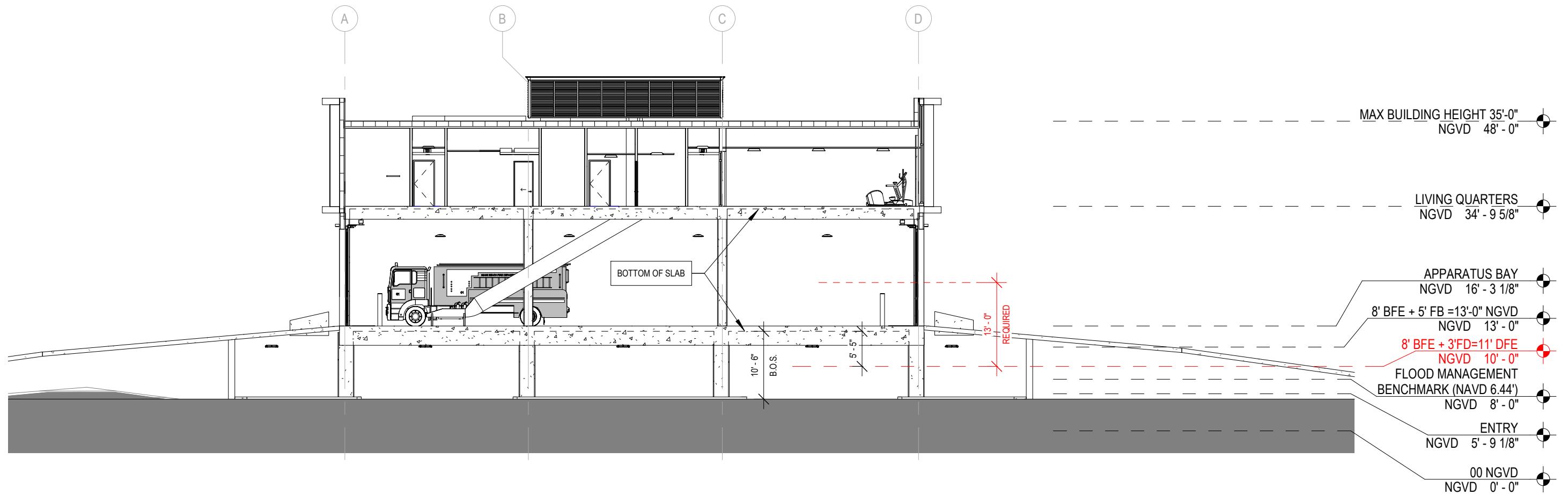
1 MAX LOT COVERAGE WAIVER 142-155(a)(3)e
 1/32" = 1'-0"



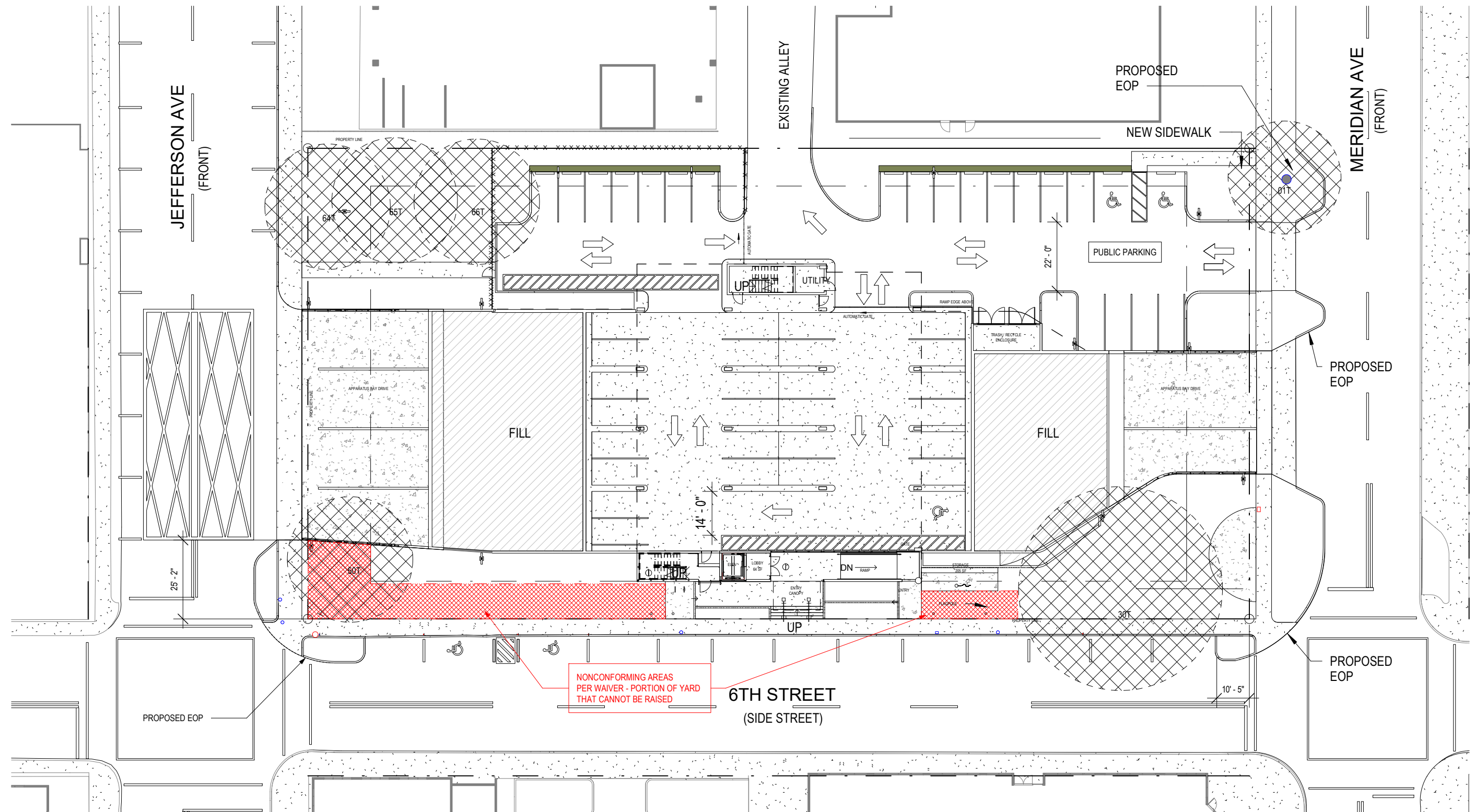


1 SHORT FRONTAGE DEVELOPMENT WAIVER 133-61
 1/32" = 1'-0"



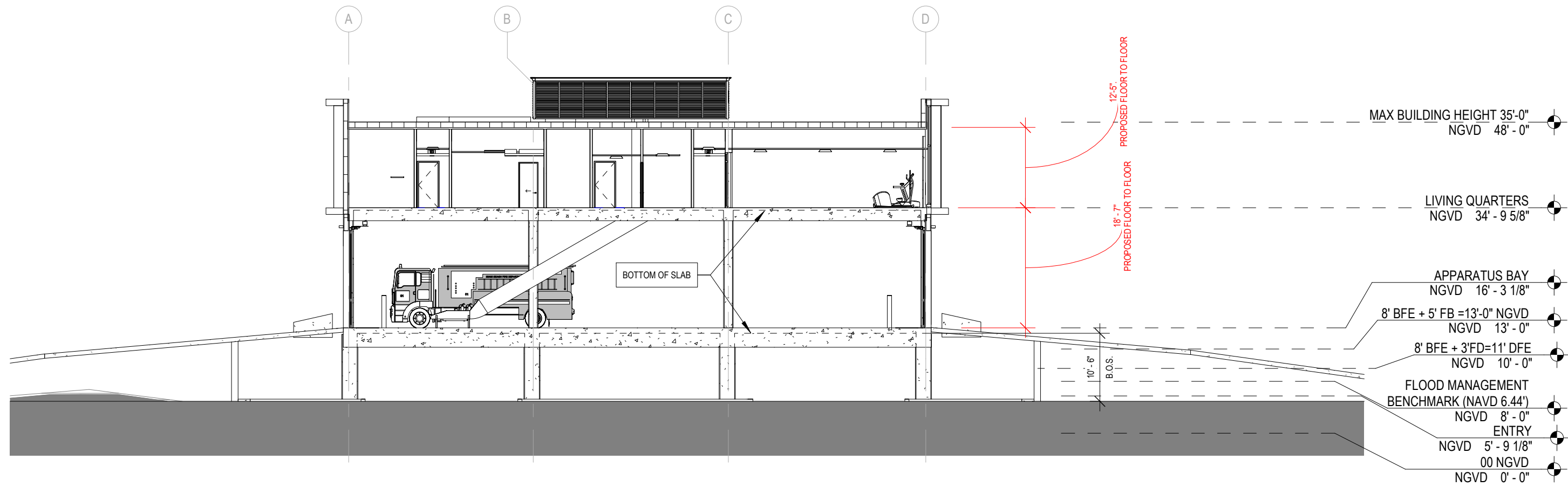


1 HEIGHT ABOVE BFE WAIVER 142-155(a)(3)f
1/16" = 1'-0"



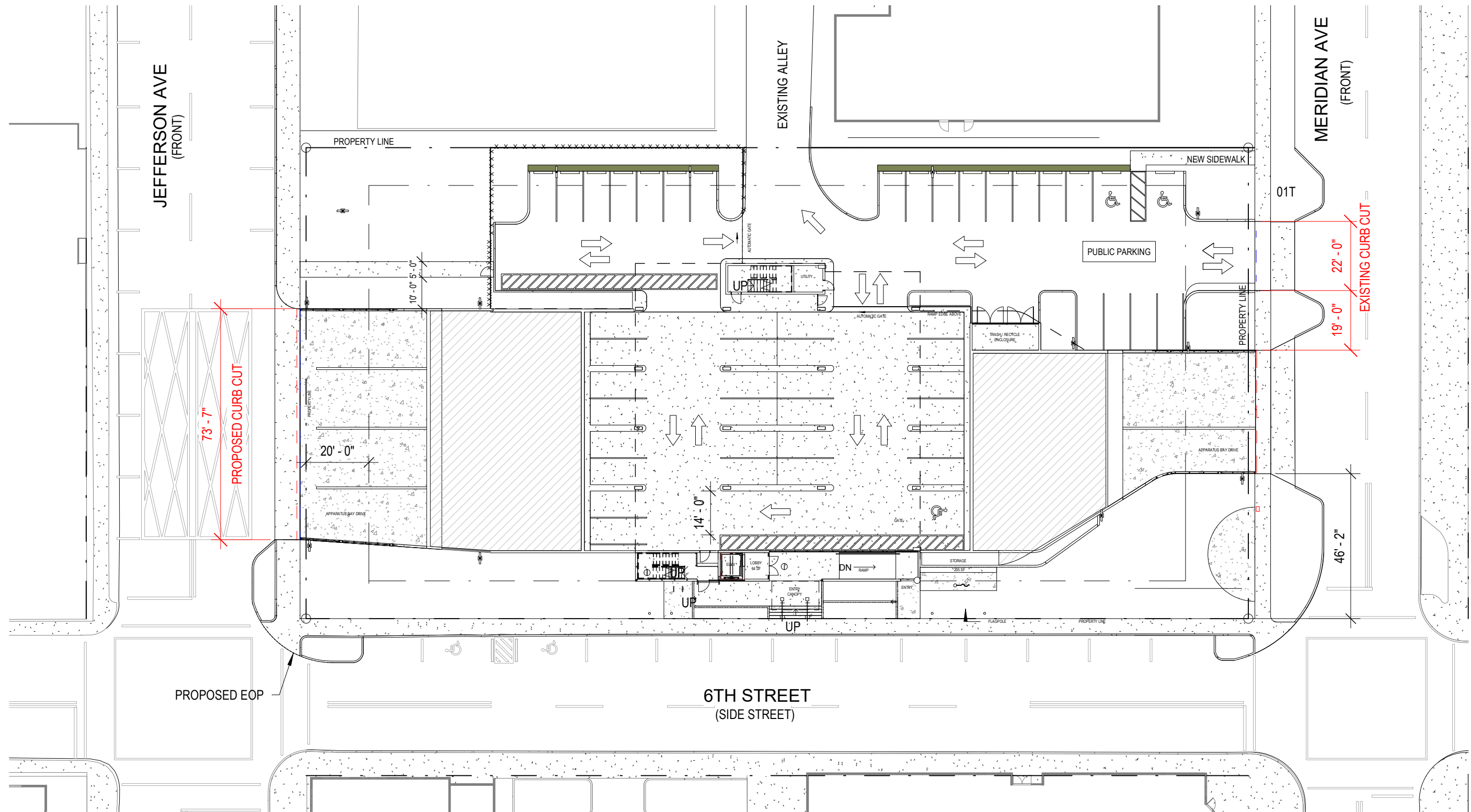
1 MIN YARD ELEVATION WAIVER - 142-155(a)(3)a,1
 1/32" = 1'-0"





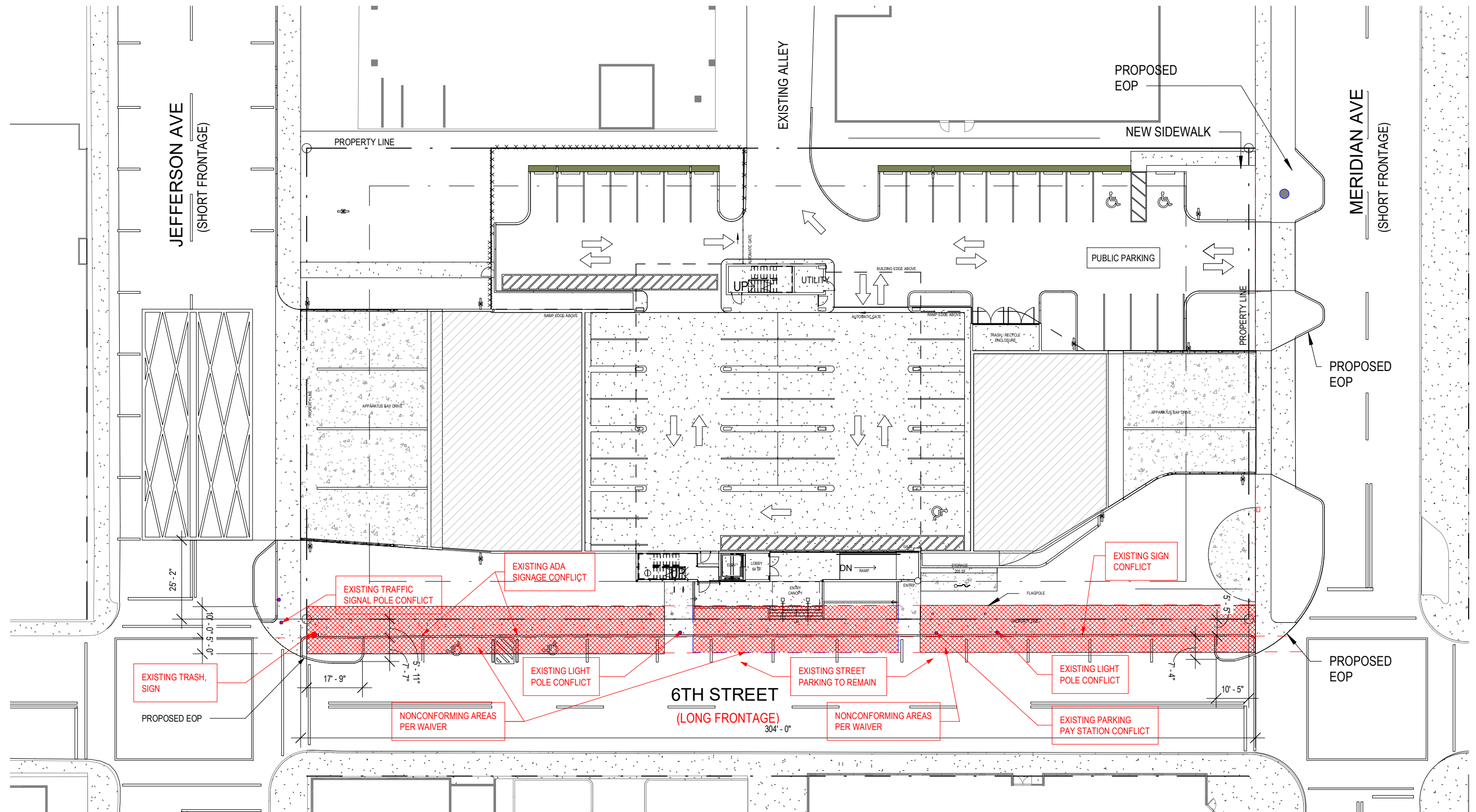
1 FLOOR TO FLOOR HEIGHT WAIVER 142-155(a)(4)i
 1/16" = 1'-0"





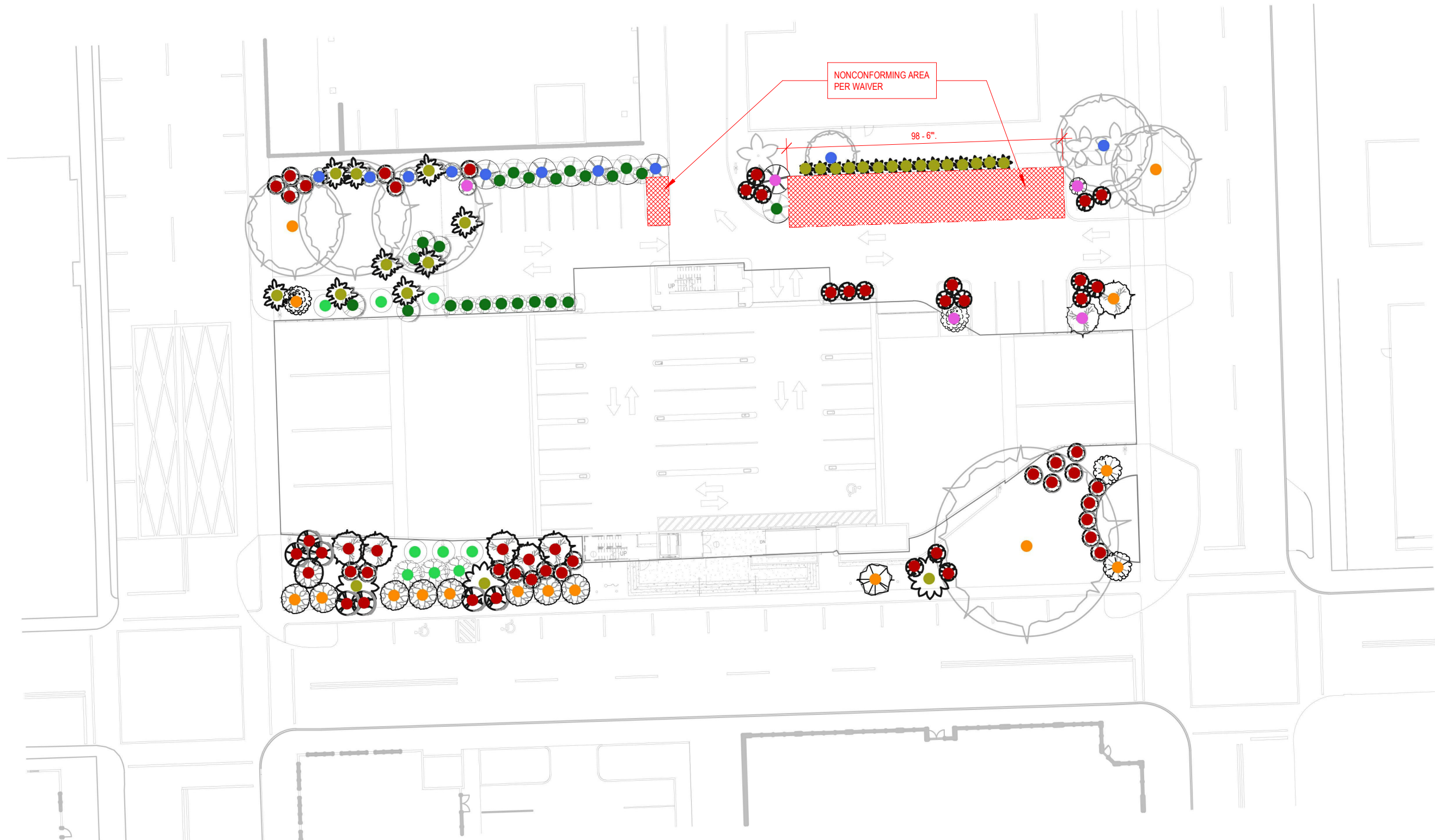
1 CURB CUT WAIVER 142-155(a)(4)i
 1/32" = 1'-0"





1 LONG FRONTAGE DEVELOPMENT WAIVER 133-62
 1/32" = 1'-0"





- TREES - STREET REQ.
- TREES - BUFFER REQ.
- PROPOSED PALMS
- PROPOSED TREES
- TREES - PARKING REQ.
- PALM MITIGATION
- TREE MITIGATION

LANDSCAPED AREAS IN PERMANENT PARKING LOTS WAIVER -

126-11(a),(b) & (h)

1
1" = 40'-0"





- TREES - STREET REQ.
- TREES - BUFFER REQ.
- PROPOSED PALMS
- PROPOSED TREES
- TREES - PARKING REQ.
- PALM MITIGATION
- TREE MITIGATION

1

LANDSCAPE BUFFER BETWEEN DISSIMILAR LAND USES -

126-10 (a) & (b)

1" = 40'-0"

ATTACHMENT I

10-11-2021

MIAMI BEACH HISTORIC PRESERVATION BOARD - FINAL SUBMITTAL

CITY OF MIAMI BEACH, OFFICE OF CAPITAL IMPROVEMENT
PROJECTS-FIRE STATION #01

833 6TH STREET MIAMI BEACH, FL 33139

Wannemacher Jensen Architects, Inc.
132 Mirror Lake Drive North Unit 301
St. Petersburg, Florida 33701-3214
(727) 822-5566 fax (727) 822-5475
www.wjarc.com
AR94244
©Wannemacher Jensen Architects, Inc.

