

**NICHOLS
BROSCH
WURST
WOLFE
& ASSOCIATES, INC.**
Architecture & Planning

161 Almeria Avenue
Coral Gables, FL 33134
(305) 443-5206
(305) 446-2972
AAC 000680

JAMES P. WURST
ARCHITECT FLA. REG.
ART1060

OWNER / DEVELOPER:
WASHINGTON SQUARED OWNER LLC
888 7th Avenue, 27th Floor
New York, NY 10019
(212) 894-7090

CONSULTANT:
JUNGLES
2964 Aviation Avenue
Coconut Grove, FL 33133
PH 305 858 6777 FAX 786 703 4382
www.raymondjungles.com

601 WASHINGTON AVE MIXED USE - HOTEL
601-685 WASHINGTON AVENUE, MIAMI BEACH, FL

SUBMITTAL HISTORY:

Revisions

#	Description	Date
5	Revision 5	02-16-18
6	Revision 6	04-03-18
7	Rev-7 Responses to Planning Comments	04-27-18
8	Revision 8	07-03-18
10	Revision 10	07-12-19

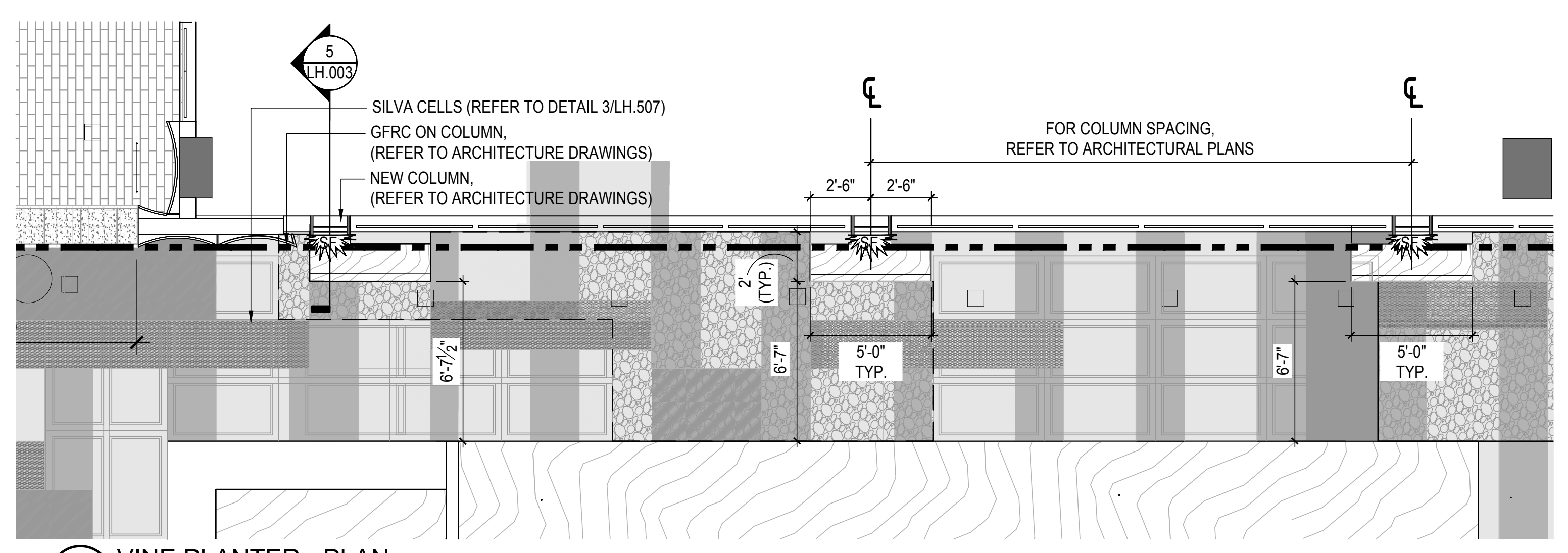
1. CONTRACTOR SHALL SUBMIT SAMPLES OF MATERIAL FOR APPROVAL BY LANDSCAPE ARCHITECT, PRIOR TO PROCUREMENT, FABRICATION, AND INSTALLATION. CONTRACTOR SHALL PROVIDE DETAILED SHOP DRAWINGS OF THE ENTIRE SYSTEM, INCLUDING EVERY PIECE, CONNECTION, AND CONDITION, FOR APPROVAL BY THE LANDSCAPE ARCHITECT, PRIOR TO PROCUREMENT, FABRICATION, AND INSTALLATION. CONTRACTOR SHALL FIELD VERIFY AS BUILT DIMENSIONS, AND PROVIDE DETAILED ENGINEERED LAYOUT DRAWINGS FOR APPROVAL BY LANDSCAPE ARCHITECT, INCLUDING ALL CONNECTIONS AND COMPONENTS.

2. CONTRACTOR SHALL PROVIDE AN ON-SITE MOCK-UP FOR APPROVAL BY THE LANDSCAPE ARCHITECT PRIOR TO INSTALLATION. MOCK-UPS SHALL BE RETAINED FOR THE LIFE OF THE PROJECT TO ENSURE COMPLIANCE WITH APPROVED CONSTRUCTION. MOCK-UPS SHALL BE PROVIDED WELL IN ADVANCE OF INSTALLATION (4 WEEKS) AND SHALL ALLOW FOR MULTIPLE ITERATIONS UNTIL AN APPROVED VERSION IS ACKNOWLEDGED BY THE LANDSCAPE ARCHITECT. CONTRACTOR SHALL SUBMIT PRODUCT DATA DEMONSTRATING COMPLIANCE WITH SPECIFICATIONS, PRIOR TO PROCUREMENT, FABRICATION, AND INSTALLATION.

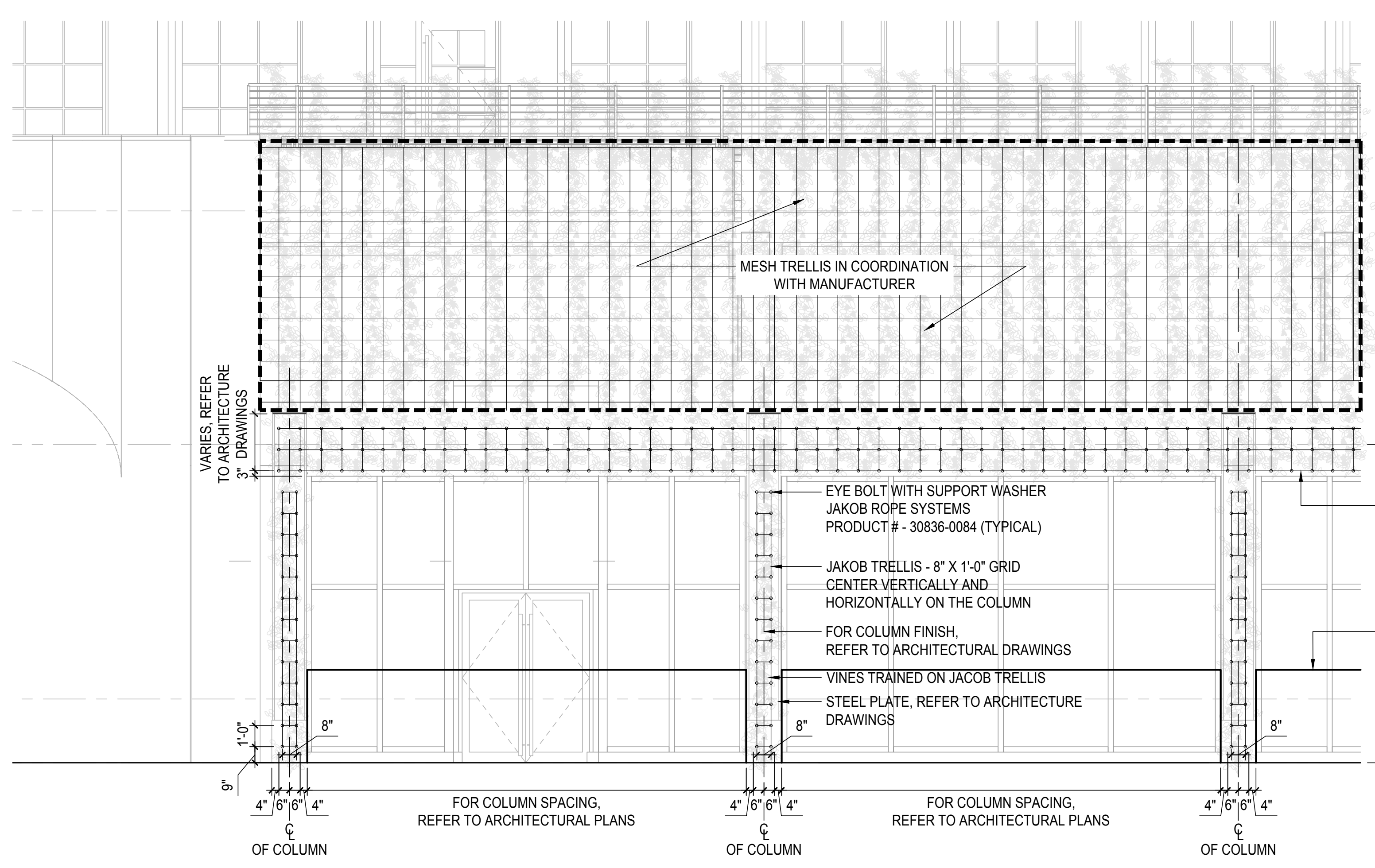
NON-HISTORIC FACADE PLANTING DETAILS

14040

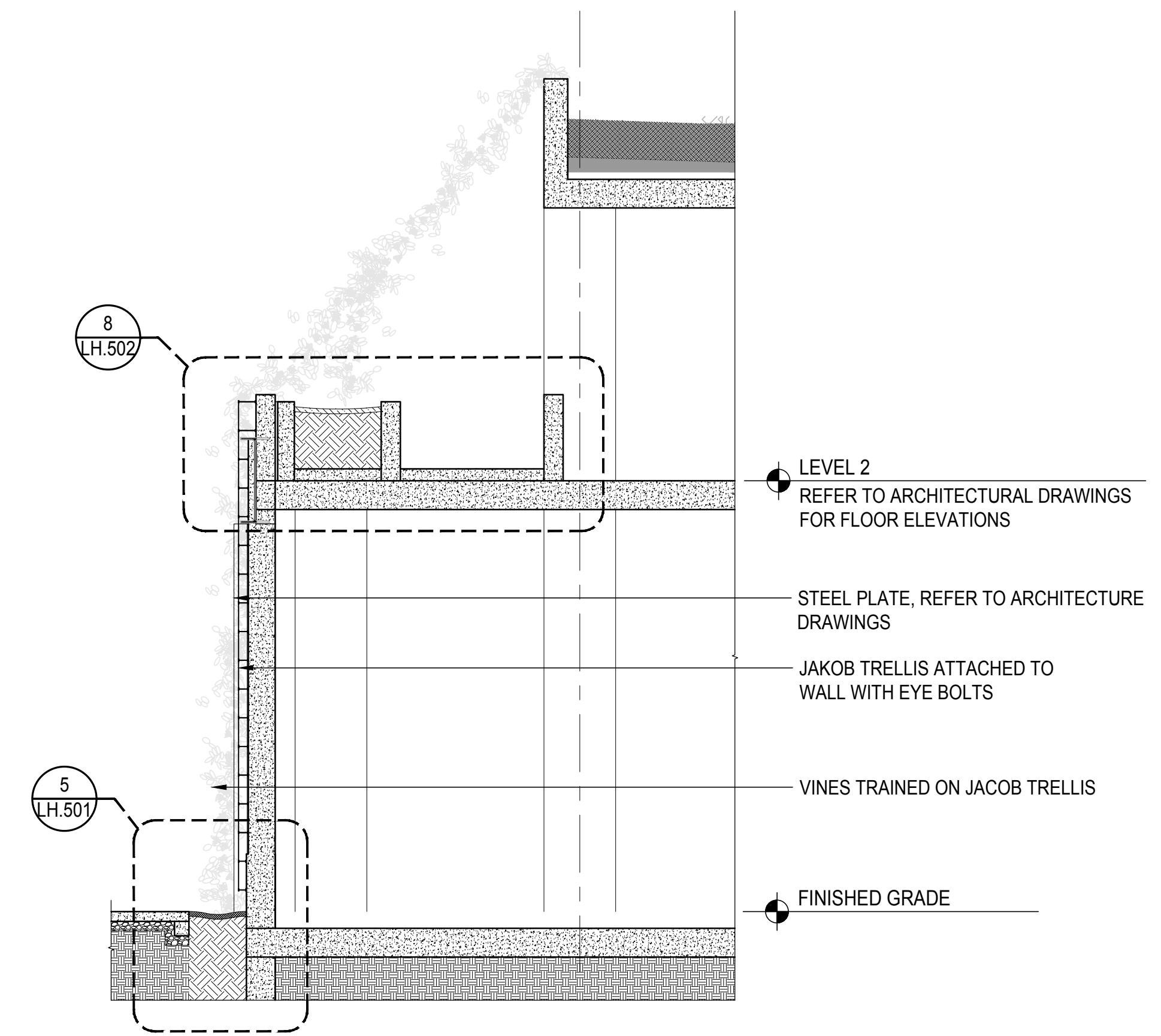
LH.509



1 VINE PLANTER - PLAN
Scale: 1/4" = 1'-0"



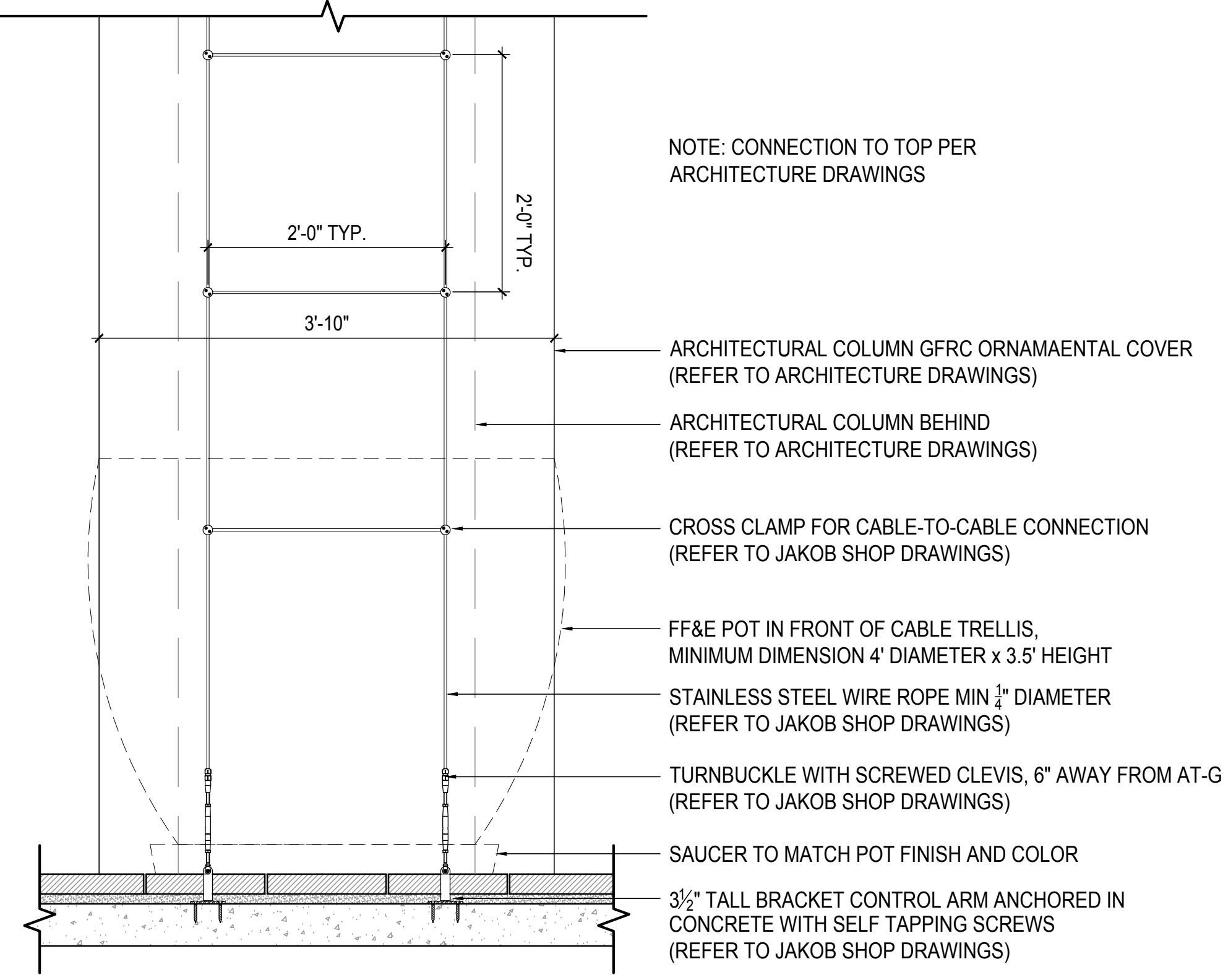
3 NON-HISTORIC FACADE - ELEVATION
Scale: 1/4" = 1'-0"



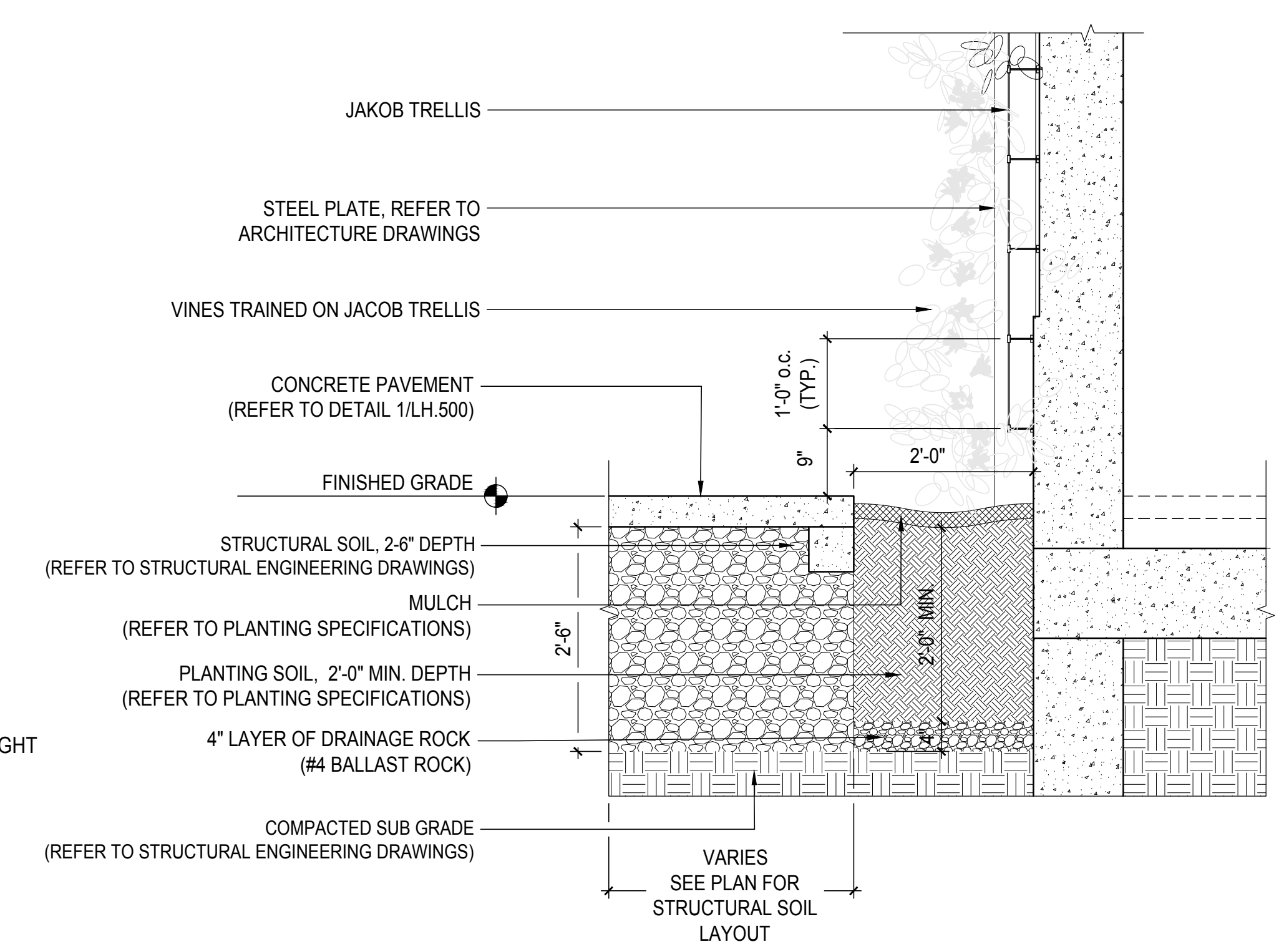
4 VINE PLANTER - SECTION
Scale: 1/4" = 1'-0"

NOTES:

- CONTRACTOR SHALL SUBMIT SAMPLES OF MATERIAL FOR APPROVAL BY LANDSCAPE ARCHITECT, PRIOR TO PROCUREMENT, FABRICATION, AND INSTALLATION.
- CONTRACTOR SHALL PROVIDE DETAILED SHOP DRAWINGS OF THE ENTIRE SYSTEM, INCLUDING EVERY PIECE, CONNECTION, AND CONDITION, FOR APPROVAL BY THE LANDSCAPE ARCHITECT, PRIOR TO PROCUREMENT, FABRICATION, AND INSTALLATION. CONTRACTOR SHALL FIELD VERIFY AS BUILT DIMENSIONS, AND PROVIDE DETAILED ENGINEERED LAYOUT DRAWINGS FOR APPROVAL BY LANDSCAPE ARCHITECT, INCLUDING ALL CONNECTIONS AND COMPONENTS.
- CONTRACTOR SHALL PROVIDE AN ON-SITE MOCK-UP FOR APPROVAL BY THE LANDSCAPE ARCHITECT PRIOR TO INSTALLATION. MOCK-UPS SHALL BE RETAINED FOR THE LIFE OF THE PROJECT TO ENSURE COMPLIANCE WITH APPROVED CONSTRUCTION. MOCK-UPS SHALL BE PROVIDED WELL IN ADVANCE OF INSTALLATION (4 WEEKS) AND SHALL ALLOW FOR MULTIPLE ITERATIONS UNTIL AN APPROVED VERSION IS ACKNOWLEDGED BY THE LANDSCAPE ARCHITECT.
- CONTRACTOR SHALL SUBMIT PRODUCT DATA DEMONSTRATING COMPLIANCE WITH SPECIFICATIONS, PRIOR TO PROCUREMENT, FABRICATION, AND INSTALLATION.



6 BREEZEWAY VINE CABLE ELEVATION
Scale: 1" = 1'-0"



5 VINE PLANTER - ENLARGEMENT
Scale: 3/4" = 1'-0"

Approved

S:\PROJECTS\15074_01\Washington Hotel\20 DESIGN\WORKING\CAD\Sheet\15074_LH.509-HARDSCAPE DETAILS.dwg
2019/08/27