



1824
ALTON RETAIL

DRB SIGNAGE
SUBMISSION

FINAL SUBMISSION
12th of August, 2016

- SCOPE OF WORK:
- TENANT SIGNAGE

1824 Alton Road
Miami Beach, FL

DESIGN REVIEW BOARD SIGNAGE SUBMITTAL

2016-07-29

COVER SHEET

1503	OWNER	KOBI KARP	2915 Biscayne Boulevard, Suite 200 Miami, Florida 33137 O: 305.573.1818 F: 305.573.3766
1824 ALTON RETAIL	SABER 1800 ALTON, LLC		AIA ASID NCARB License #AR0012578 WWW.KOBIKARP.COM
1824 Alton Road Miami Beach, FL 33139	20900 NE 30TH AVENUE, SUITE 812 Aventura, FL 33180 O: 786.406.1762	ARCHITECTURE INTERIOR DESIGN PLANNING	

ALL DRAWINGS AND WRITTEN MATERIAL APPEARING HEREIN CONSTITUTE THE ORIGINAL AND UNPUBLISHED WORK OF KOBI KARP AIA, AND MAY NOT BE
DUPLICATED, USED, OR DISCLOSED WITHOUT THE EXPRESS WRITTEN CONSENT OF KOBI KARP ARCHITECTURE & INTERIOR DESIGN, INC. AIA (c) 2016




1824 ALTON - MIAMI BEACH, FLORIDA

© The work product provided by Kobi Karp Architecture and Interior Design, Inc. is the sole property of Kobi Karp Architecture and Interior Design, Inc. The work product may not be used without the expressed written consent of Kobi Karp Architecture and Interior Design, Inc (KKAID)



1503	OWNER
1824 ALTON RETAIL	SABER 1800 ALTON, LLC
1824 Alton Road Miami Beach, FL 33139	20900 NE 30TH AVENUE, SUITE 812 Aventura, FL 33180 O: 786.406.1762

KOBI KARP



ARCHITECTURE
INTERIOR DESIGN
PLANNING

2915 Biscayne Boulevard, Suite 200
Miami, Florida 33137
O: 305.573.1818
F: 305.573.3766

AIA ASID NCARB
License #AR0012578
WWW.KOBIKARP.COM

DESIGN REVIEW BOARD SIGNAGE SUBMITTAL

PROPOSED DAY RENDERING

not to scale

2016-07-29

A 2.00



1824 ALTON - MIAMI BEACH, FLORIDA

© The work product provided by Kobi Karp Architecture and Interior Design, Inc. is the sole property of Kobi Karp Architecture and Interior Design, Inc. The work product may not be used without the expressed written consent of Kobi Karp Architecture and Interior Design, Inc (KKAID)



1503	OWNER
1824 ALTON RETAIL	SABER 1800 ALTON, LLC
1824 Alton Road Miami Beach, FL 33139	20900 NE 30TH AVENUE, SUITE 812 Aventura, FL 33180 O: 786.406.1762



KOBI KARP
ARCHITECTURE
INTERIOR DESIGN
PLANNING

2915 Biscayne Boulevard, Suite 200
Miami, Florida 33137
O: 305.573.1818
F: 305.573.3766

AIA ASID NCARB
License #AR0012578
WWW.KOBIKARP.COM

ALL DRAWINGS AND WRITTEN MATERIAL APPEARING HEREIN CONSTITUTE THE ORIGINAL AND UNPUBLISHED WORK OF KOBI KARP AIA, AND MAY NOT BE
DUPLICATED, USED, OR DISCLOSED WITHOUT THE EXPRESS WRITTEN CONSENT OF KOBI KARP ARCHITECTURE & INTERIOR DESIGN, INC. AIA (c) 2016

DESIGN REVIEW BOARD SIGNAGE SUBMITTAL

PROPOSED NIGHT RENDERING

not to scale
2016-07-29

A 2.01



1824 ALTON - MIAMI BEACH, FLORIDA

© The work product provided by Kobi Karp Architecture and Interior Design, Inc. is the sole property of Kobi Karp Architecture and Interior Design, Inc. The work product may not be used without the expressed written consent of Kobi Karp Architecture and Interior Design, Inc (KKAID)

1503

OWNER

1824 ALTON RETAIL

SABER 1800 ALTON, LLC

1824 Alton Road
Miami Beach, FL 33139

20900 NE 30TH AVENUE, SUITE 812
Aventura, FL 33180
O: 786.406.1762

KOBI KARP



ARCHITECTURE
INTERIOR DESIGN
PLANNING

2915 Biscayne Boulevard, Suite 200
Miami, Florida 33137
O: 305.573.1818
F: 305.573.3766

AIA ASID NCARB
License #AR0012578
WWW.KOBIKARP.COM

DESIGN REVIEW BOARD SIGNAGE SUBMITTAL

PROPOSED DAY RENDERING

not to scale

2016-07-29

A 2.02



1824 ALTON - MIAMI BEACH, FLORIDA

© The work product provided by Kobi Karp Architecture and Interior Design, Inc. is the sole property of Kobi Karp Architecture and Interior Design, Inc. The work product may not be used without the expressed written consent of Kobi Karp Architecture and Interior Design, Inc (KKAID)



WWW.KOBIKARP.COM

1503

OWNER

1824 ALTON RETAIL

SABER 1800 ALTON, LLC

1824 Alton Road
Miami Beach, FL 33139

20900 NE 30TH AVENUE, SUITE 812
Aventura, FL 33180
O: 786.406.1762

KOBI KARP



ARCHITECTURE
INTERIOR DESIGN
PLANNING

2915 Biscayne Boulevard, Suite 200
Miami, Florida 33137
O: 305.573.1818
F: 305.573.3766

AIA ASID NCARB
License #AR0012578
WWW.KOBIKARP.COM

DESIGN REVIEW BOARD SIGNAGE SUBMITTAL

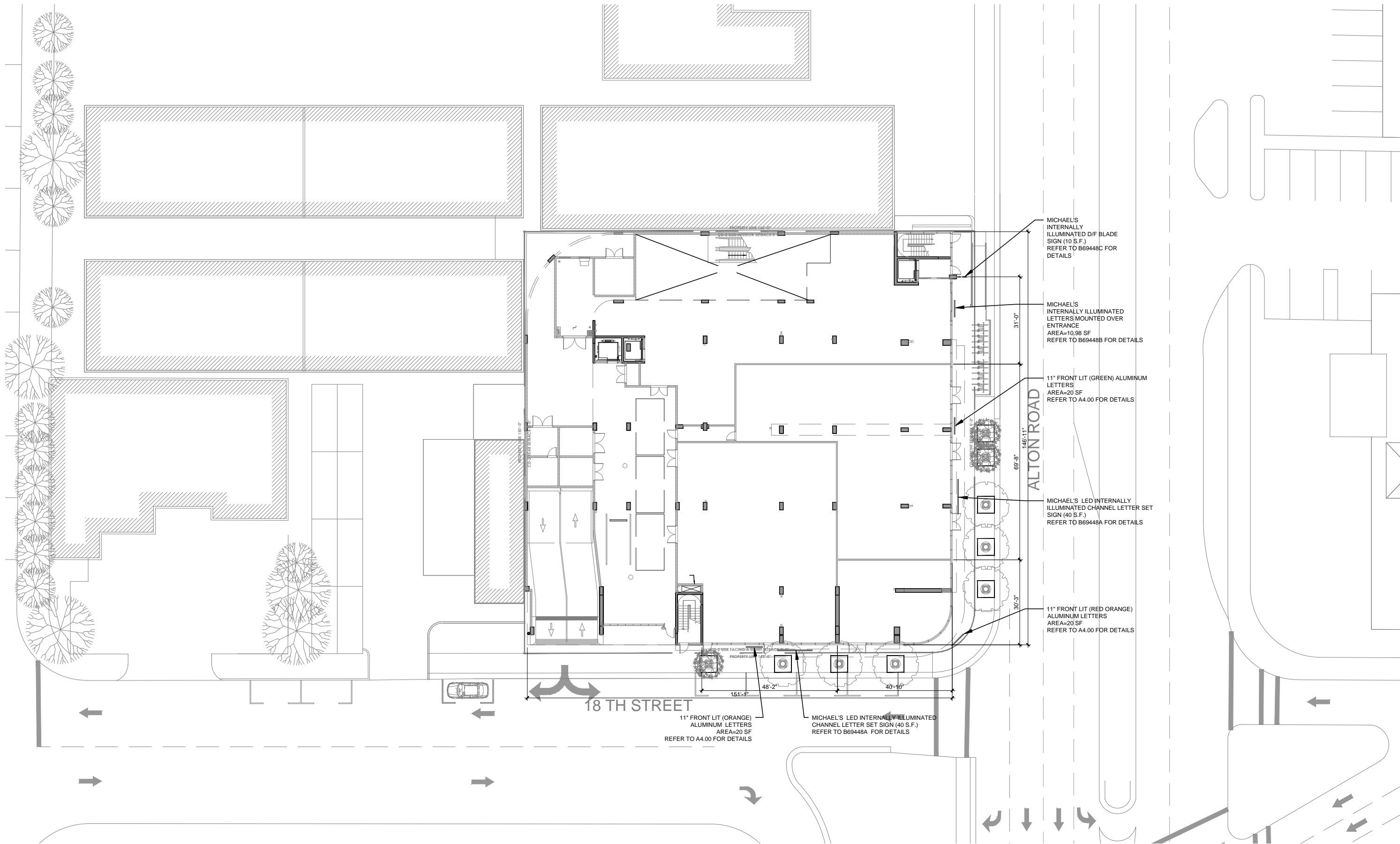
PROPOSED NIGHT RENDERING

not to scale

2016-07-29

A 2.03

ALL DRAWINGS AND WRITTEN MATERIAL APPEARING HEREIN CONSTITUTE THE ORIGINAL AND UNPUBLISHED WORK OF KOBI KARP AIA, AND MAY NOT BE
DUPLICATED, USED, OR DISCLOSED WITHOUT THE EXPRESS WRITTEN CONSENT OF KOBI KARP ARCHITECTURE & INTERIOR DESIGN, INC. AIA (c) 2016



1503	OWNER
1824 ALTON RETAIL	SABER 1800 ALTON, LLC
1824 Alton Road Miami Beach, FL 33139	20900 NE 30TH AVENUE, SUITE 812 Aventura, FL 33180 O: 786.406.1762

KOBI KARP



ARCHITECTURE
INTERIOR DESIGN
PLANNING

2915 Biscayne Boulevard, Suite 200
Miami, Florida 33137
O: 305.573.1818
F: 305.573.3766

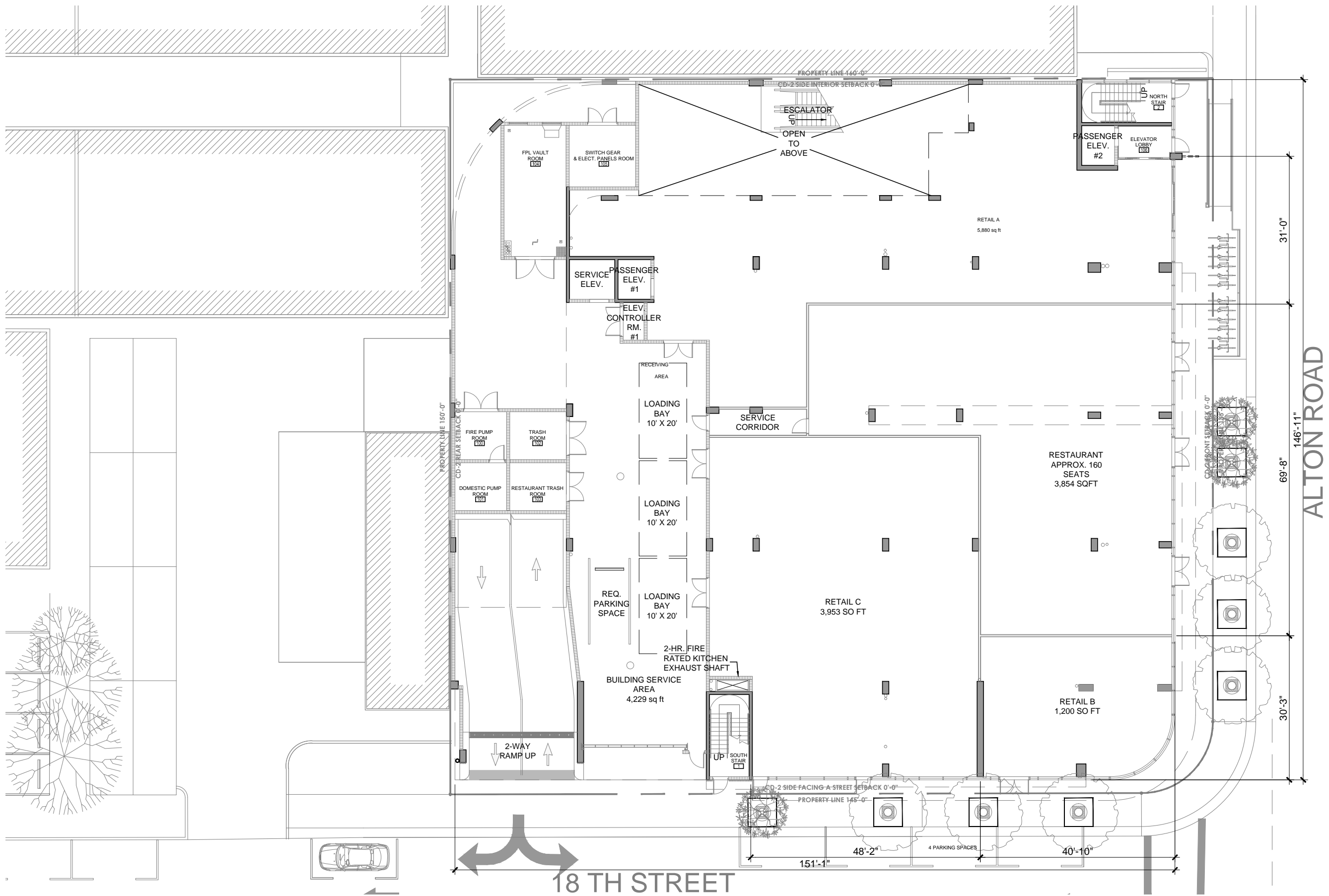
AIA ASID NCARB
License #AR0012578
WWW.KOBIKARP.COM

ALL DRAWINGS AND WRITTEN MATERIAL APPEARING HEREIN CONSTITUTE THE ORIGINAL AND UNPUBLISHED WORK OF KOBI KARP AIA, AND MAY NOT BE
DUPLICATED, USED, OR DISCLOSED WITHOUT THE EXPRESS WRITTEN CONSENT OF KOBI KARP ARCHITECTURE & INTERIOR DESIGN, INC. AIA (c) 2016

DESIGN REVIEW BOARD SIGNAGE SUBMITTAL

SITE PLAN
SCALE : 1" = 20'-0"
2016-07-29

A 2.04



1503
1824 ALTON RETAIL

1824 Alton Road
Miami Beach, FL 33139

OWNER

SABER 1800 ALTON, LLC

20900 NE 30TH AVENUE, SUITE 812
Aventura, FL 33180
O: 786.406.1762

KOBI KARP
ARCHITECTURE
INTERIOR DESIGN
PLANNING

2915 Biscayne Boulevard, Suite 200
Miami, Florida 33137
O: 305.573.1818
F: 305.573.3766

AIA ASID NCARB
License #AR0012578
WWW.KOBIKARP.COM

DESIGN REVIEW BOARD SIGNAGE SUBMITTAL

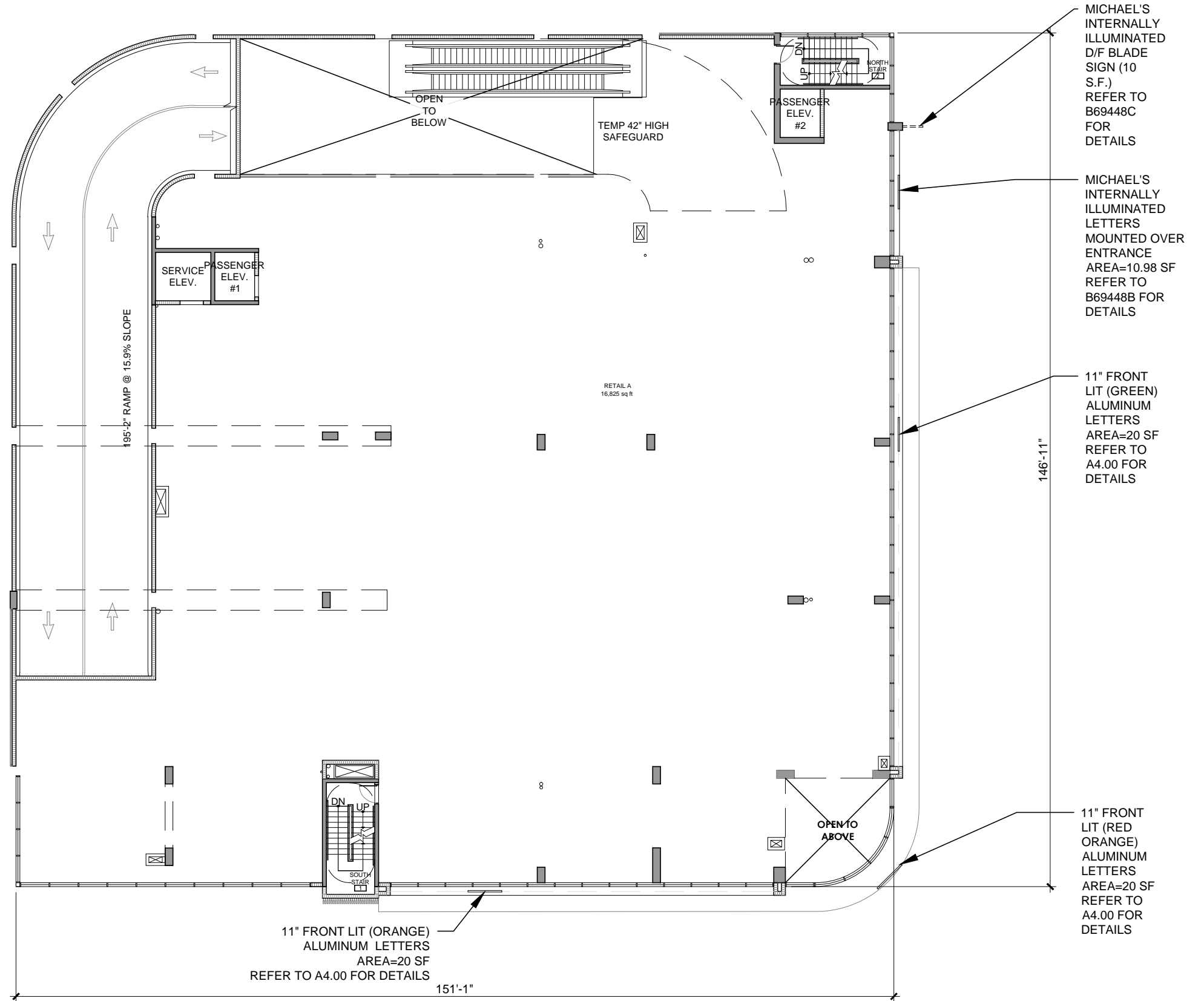
LEVEL 1 - GROUND FLOOR PLAN

SCALE : 1" = 20'-0"

2016-07-29



A 3.00



1503

1824 ALTON RETAIL

1824 Alton Road
Miami Beach, FL 33139

OWNER

SABER 1800 ALTON, LLC

20900 NE 30TH AVENUE, SUITE 812
Aventura, FL 33180
O: 786.406.1762

KOBI KARP



ARCHITECTURE
INTERIOR DESIGN
PLANNING


2915 Biscayne Boulevard, Suite 200
Miami, Florida 33137
O: 305.573.1818
F: 305.573.3766

AIA ASID NCARB
License #AR0012578
WWW.KOBIKARP.COM

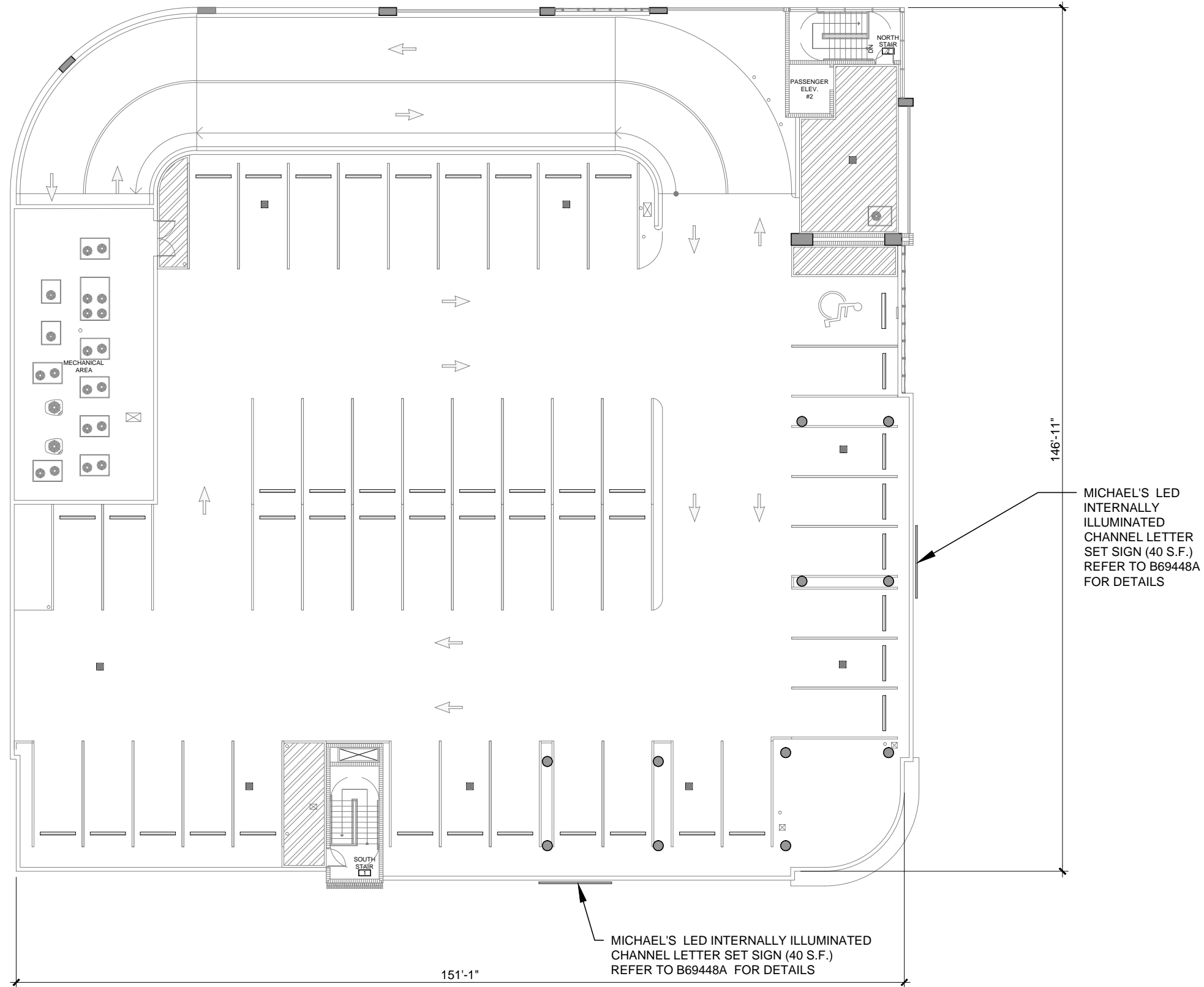
DESIGN REVIEW BOARD SIGNAGE SUBMITTAL

LEVEL 2 - SECOND FLOOR PLAN

SCALE : 1" = 20'-0"
2016-07-29

 **A 3.01**

ALL DRAWINGS AND WRITTEN MATERIAL APPEARING HEREIN CONSTITUTE THE ORIGINAL AND UNPUBLISHED WORK OF KOBI KARP AIA, AND MAY NOT BE DUPLICATED, USED, OR DISCLOSED WITHOUT THE EXPRESS WRITTEN CONSENT OF KOBI KARP ARCHITECTURE & INTERIOR DESIGN, INC. AIA (c) 2016



1503	OWNER
1824 ALTON RETAIL	SABER 1800 ALTON, LLC
1824 Alton Road Miami Beach, FL 33139	20900 NE 30TH AVENUE, SUITE 812 Aventura, FL 33180 O: 786.406.1762

KOBI KARP



ARCHITECTURE
INTERIOR DESIGN
PLANNING

2915 Biscayne Boulevard, Suite 200
Miami, Florida 33137
O: 305.573.1818
F: 305.573.3766

AIA ASID NCARB
License #AR0012578
WWW.KOBIKARP.COM


ALL DRAWINGS AND WRITTEN MATERIAL APPEARING HEREIN CONSTITUTE THE ORIGINAL AND UNPUBLISHED WORK OF KOBI KARP AIA, AND MAY NOT BE DUPLICATED, USED, OR DISCLOSED WITHOUT THE EXPRESS WRITTEN CONSENT OF KOBI KARP ARCHITECTURE & INTERIOR DESIGN, INC. AIA (c) 2016

DESIGN REVIEW BOARD SIGNAGE SUBMITTAL

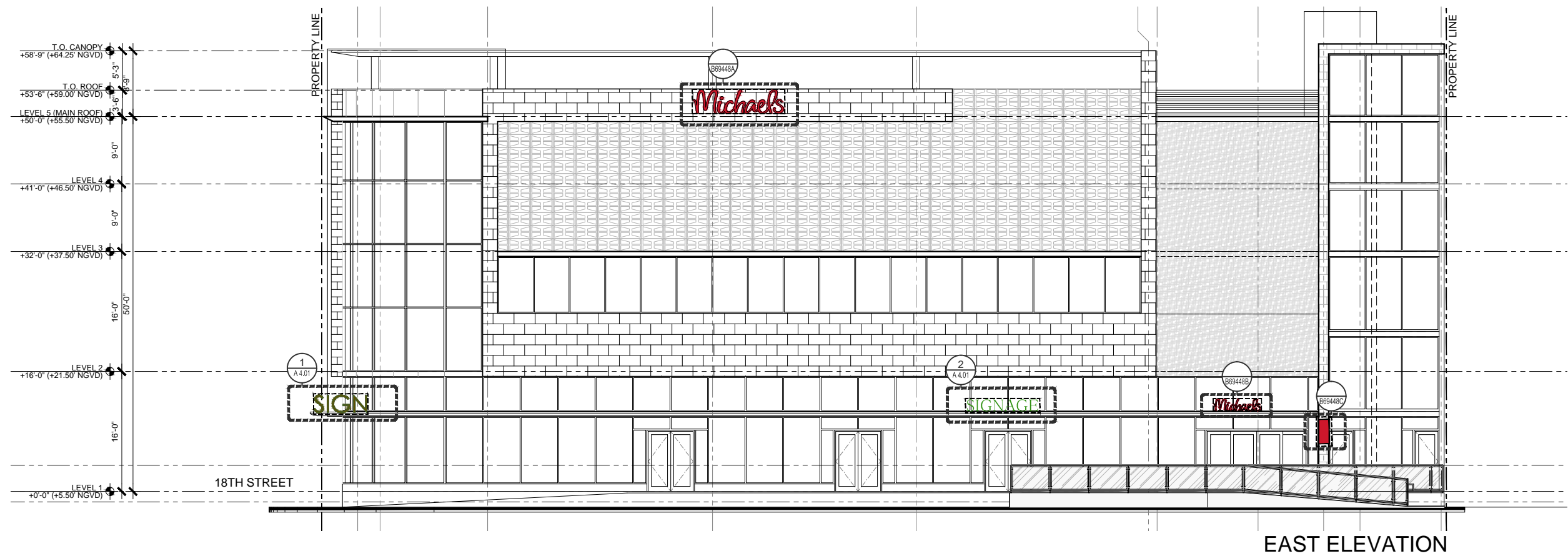
ROOF TOP LEVEL

SCALE : 1" = 20'-0"

2016-07-29



A 3.02



1503

OWNER

1824 ALTON RETAIL

SABER 1800 ALTON, LLC

1824 Alton Road
Miami Beach, FL 33139

20900 NE 30TH AVENUE, SUITE 812
Aventura, FL 33180
O: 786.406.1762

KOBİ KARP



2915 Biscayne Boulevard, Suite 200
Miami, Florida 33137
O: 305.573.1818
F: 305.573.3766

AIA ASID NCARB
License #AR0012578
WWW.KOBIKARP.COM

DESIGN REVIEW BOARD SIGNAGE SUBMITTAL

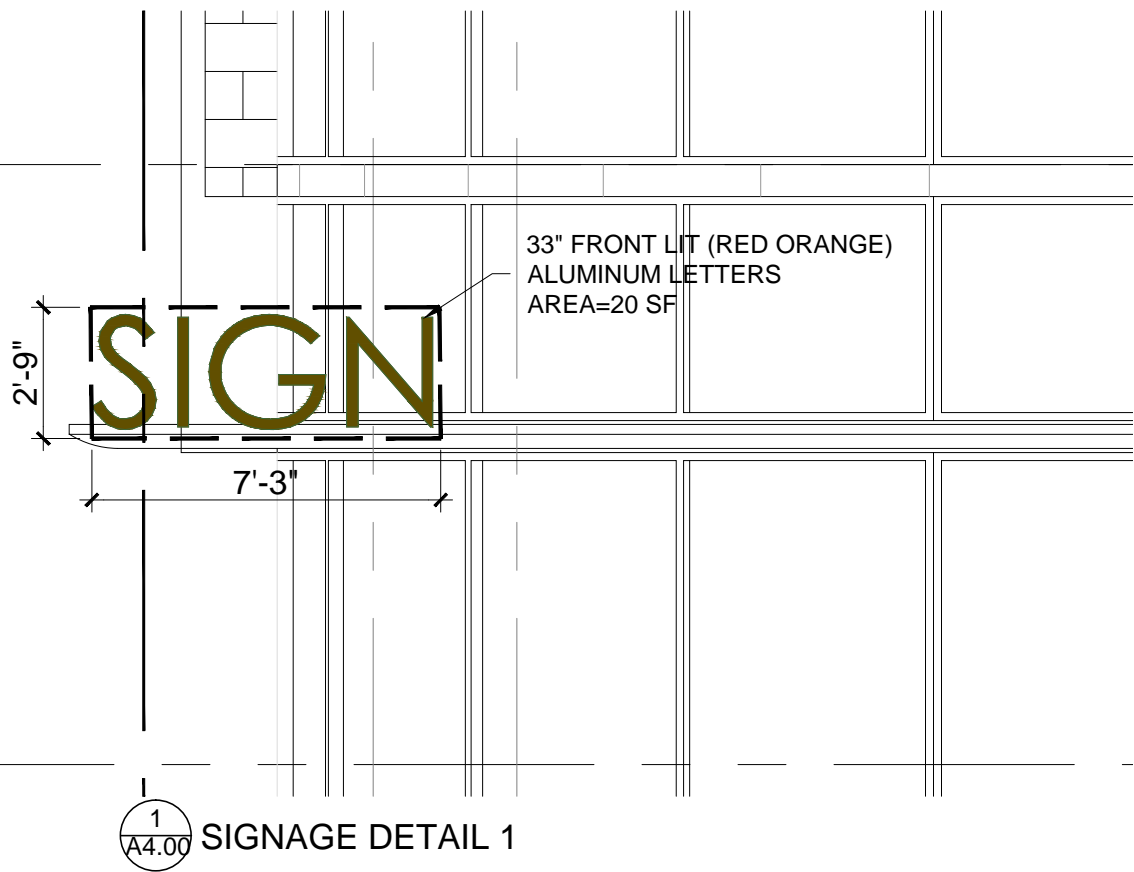
ELEVATIONS

$$1/16'' = 1'$$

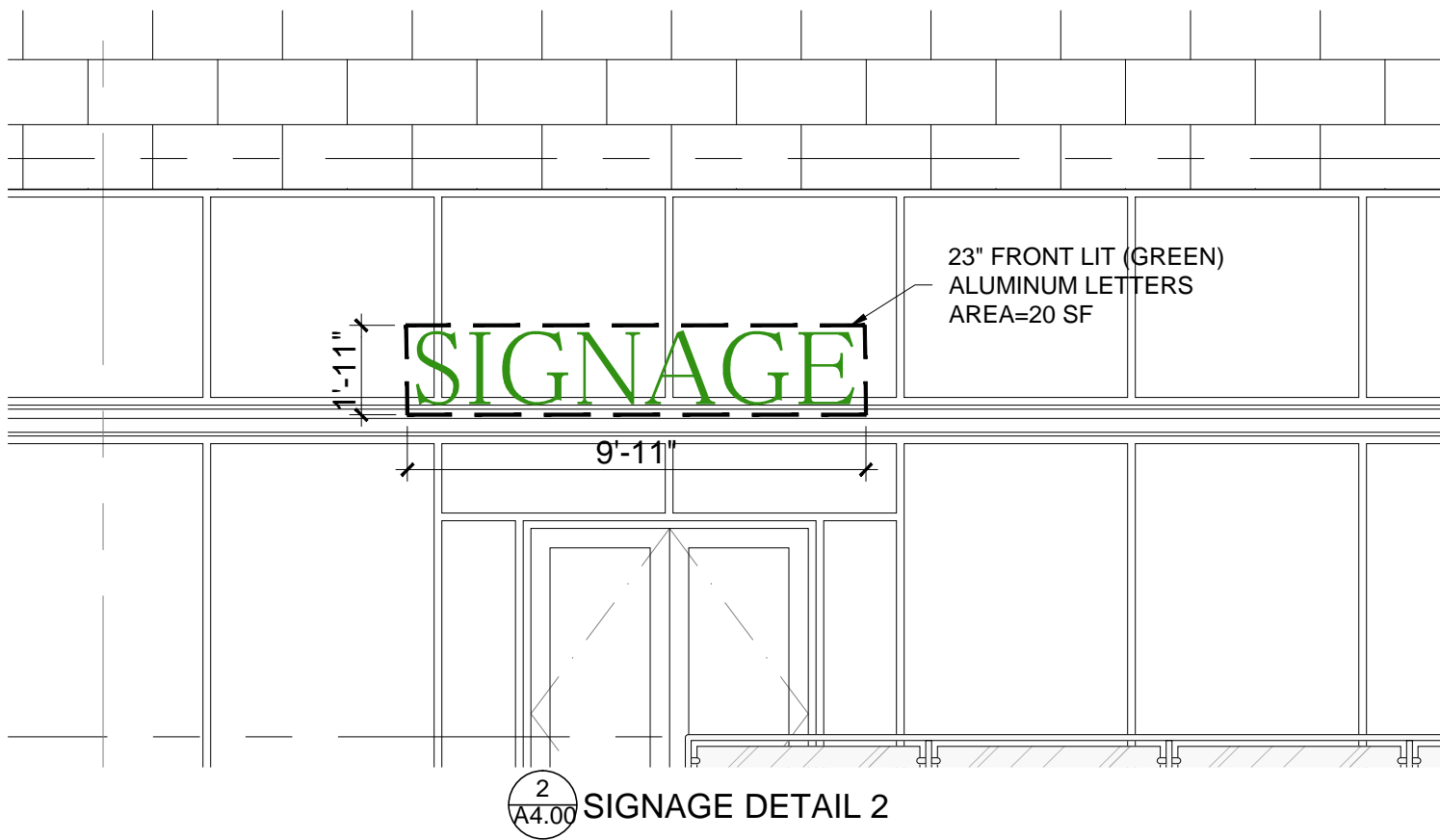
16-07-29

A 4.00

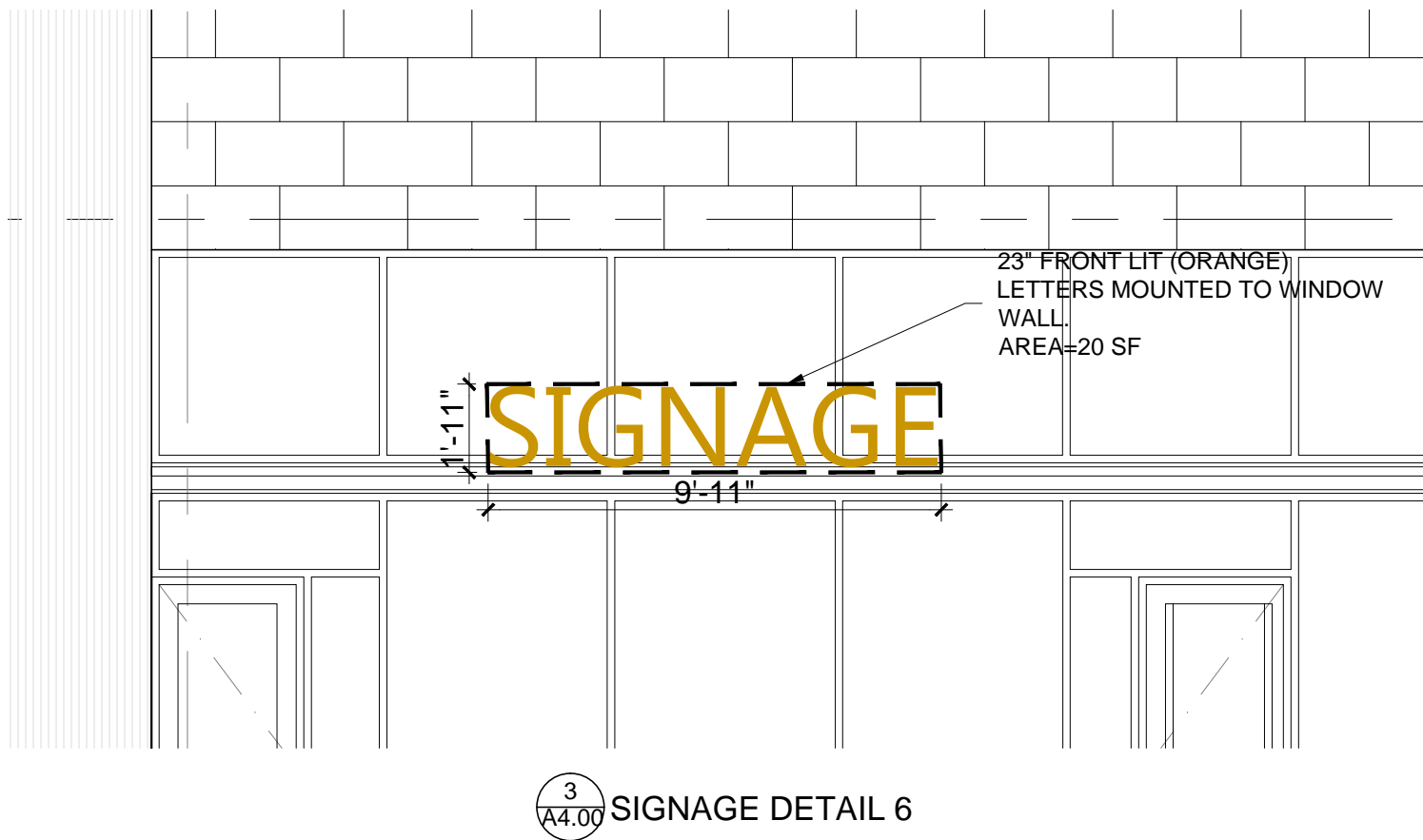
ALL DRAWINGS AND WRITTEN MATERIAL APPEARING HEREIN CONSTITUTE THE ORIGINAL AND UNPUBLISHED WORK OF KOBI KARP AIA, AND MAY NOT BE DUPLICATED, USED, OR DISCLOSED WITHOUT THE EXPRESS WRITTEN CONSENT OF KOBI KARP ARCHITECTURE & INTERIOR DESIGN, INC. AIA. (c) 2016



SIGNAGE DETAIL 1



SIGNAGE DETAIL 2



SIGNAGE DETAIL 6

1503

OWNER

1824 ALTON RETAIL

SABER 1800 ALTON, LLC

1824 Alton Road
Miami Beach, FL 33139

20900 NE 30TH AVENUE, SUITE 812
Aventura, FL 33180
O: 786.406.1762

KOBI KARP



ARCHITECTURE
INTERIOR DESIGN
PLANNING

2915 Biscayne Boulevard, Suite 200
Miami, Florida 33137
O: 305.573.1818
F: 305.573.3766

AIA ASID NCARB
License #AR0012578
WWW.KOBIKARP.COM

DESIGN REVIEW BOARD SIGNAGE SUBMITTAL

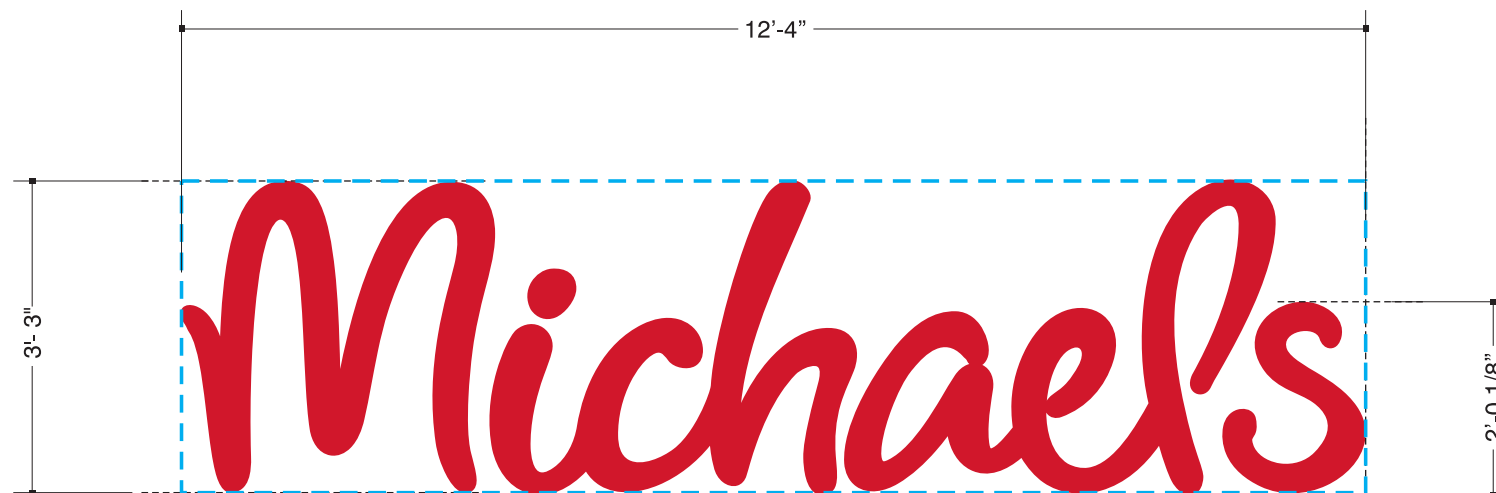
SIGNAGE DETAILS

2016-07-29

A 4.01

Michael's

L.E.D. Internally Illuminated Channel Letter Set
NO TAGLINE
Remote



L.E.D. Internally Illuminated Letter Set Layout

Remote (2) Required

40.0 ☒

Scale: 1/2" = 1'-0"

Color Schedule

Vinyl



**Arlon 2500E-33 Red
First Surface**

Trim Cap / Retainer



Dk. Bronze

Returns



Dk. Bronze

Vertical Letter Section
LED face lit letter flush mounted
(Remote)

(A)	ILLUMINATION	LED / COLOR	SLOAN - PER MANUFACTURER
		LED / COLOR	RED
		LED / COLOR	-
(B)	POWER SUPPLY	TYPE	SLOAN
			PER MANUFACTURER
(C)	FACE	MATERIAL	7328 POLYCARBONATE
		COLOR	WHITE
		VINYL	ARLON 2500E-33
		COLOR	RED
(D)	RETAINER	TYPE	1" TRIM CAP
		COLOR	DK. BRONZE
(E)	RETURN	MATERIAL	.040 X 5.3" ALUMINUM
		COLOR	DK. BRONZE
		DEPTH	5"
(F)	BACK	GAUGE	.063
		MATERIAL	ALUMINUM
(G)	MOUNTING	TYPE	MECHANICAL
		FASTENER	5/16-18 NC SLEEVE ANCHOR
(H)	ELECTRICAL	TYPE	PASS THRU
		TYPE	-
(I)	SWITCH	TYPE	DISCONNECT/TOGGLE
		LOCATION	BY ELECTRICIAN

*WEEP HOLE(S) PER MFG. STANDARDS
*CAULK REQUIRED
*UL LISTED PRODUCT - NO VISIBLE LABELS
*ALL ELECTRICAL OUTS LOCATED FOR RACEWAY OR REMOTE APPLICATION

ALL MOUNTING, ENGINEERING AND ACCESS NEED TO BE FIELD VERIFIED.



Kieffer
& CO., INC.

THIS IS AN ORIGINAL UNPUBLISHED DRAWING SUBMITTED FOR USE IN CONNECTION WITH A PROJECT BEING PLANNED FOR YOU BY KIEFFER & CO., INC. IT IS NOT TO BE REPRODUCED, COPIED OR EXHIBITED IN ANY FASHION WITHOUT THE WRITTEN PERMISSION OF KIEFFER & CO., INC.

© 2015 KIEFFER & CO., INC.

585 Bond Street - Lincolnshire, IL 60069
PHONE: (847) 520-1255 FAX: (847) 520-1543
www.kieffersigns.com

CUSTOMER: *Michael's*

LOCATION: Miami Beach, FL

SALESMAN: LC DESIGNER: MAK

DATE: 08/28/15



COMPANION FILES

PRODUCTION PROCESSING

Kieffer Item # _____

Job # _____

-001 _____

-002 _____

003

-004 _____

INITIALS: DATE:

REVISION:

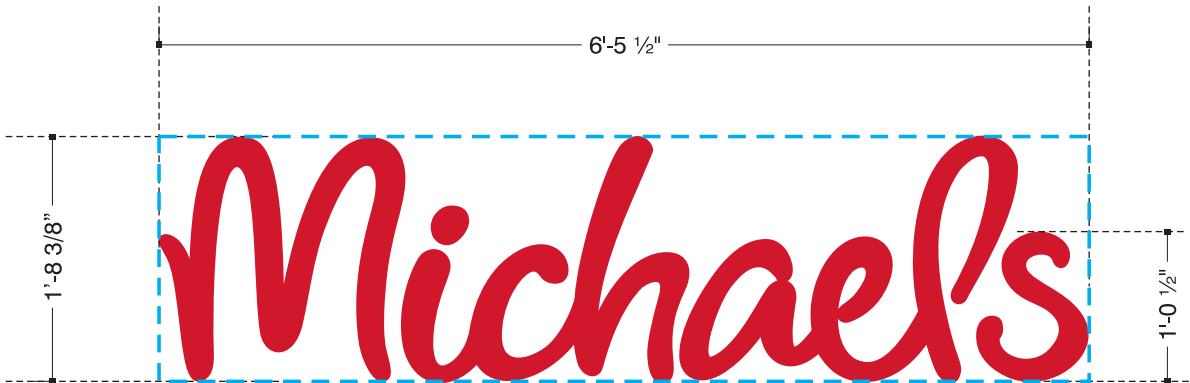
Landlord Signature: _____ Printed Name: _____ Company: _____ Date: _____

B69448A

Michael's

L.E.D. Internally Illuminated Channel Letter Set
NO TAGLINE
Remote

BLADE SIGN NOTE:
If the blade sign is
eliminated the letters
on the lower wall
can be 28 3/4" tall.



L.E.D. Internally Illuminated Letter Set Layout

Remote (1) Required

10.98

Scale: 3/4" = 1'-0"

Color Schedule

Vinyl

Arlon 2500E-33 Red
First Surface

Trim Cap / Retainer

Dk. Bronze

Returns

Dk. Bronze

Vertical Letter Section
LED face lit letter flush mounted
(Remote)

A	ILLUMINATION	LED / COLOR	SLOAN - PER MANUFACTURE
		LED / COLOR	RED
		LED / COLOR	-
B	POWER SUPPLY	TYPE	SLOAN
		TYPE	PER MANUFACTURE
C	FACE	MATERIAL	7328 POLYCARBONATE
		COLOR	WHITE
		VINYL	ARLON 2500E-33
D	RETAINER	TYPE	1" TRIM CAP
		COLOR	DK. BRONZE
E	RETURN	MATERIAL	.040 x 5.3" ALUMINUM
		COLOR	DK. BRONZE
		DEPTH	5"
F	BACK	GAUGE	.063
		MATERIAL	ALUMINUM
G	MOUNTING	TYPE	MECHANICAL
H	ELECTRICAL	FASTENER	5/16-18 NC SLEEVE ANCHOR
		TYPE	PASS THRU
I	SWITCH	TYPE	-
		LOCATION	DISCONNECT/TOGGLE BY ELECTRICIAN

*WEEP HOLE(S) PER MFG. STANDARDS
*CAULK REQUIRED
*UL LISTED PRODUCT - NO VISIBLE LABELS
*ALL ELECTRICAL OUTS LOCATED FOR RACEWAY OR REMOTE APPLICATION

ALL MOUNTING, ENGINEERING AND ACCESS NEED TO BE FIELD VERIFIED.



THIS IS AN ORIGINAL UNPUBLISHED DRAWING SUBMITTED FOR USE IN CONNECTION WITH A PROJECT BEING PLANNED FOR YOU BY KIEFFER & CO., INC. IT IS NOT TO BE REPRODUCED, COPIED OR EXHIBITED IN ANY FASHION WITHOUT THE WRITTEN PERMISSION OF KIEFFER & CO., INC.

© 2015 KIEFFER & CO., INC.

585 Bond Street - Lincolnshire, IL 60069
PHONE: (847) 520-1255 FAX: (847) 520-1543
www.kieffersigns.com

CUSTOMER: Michael's

LOCATION: Miami Beach, FL

SALESMAN: LC DESIGNER: JRS

DATE: 12/03/15



COMPANION FILES

PRODUCTION PROCESSING

Kieffer Item #

Job #

-001

-002

-003

-004

INITIALS: DATE: 1/11/16
JRS MAK 2/22/16

REVISION: A Reduce to 10.98 square feet.
B Blade sign note

B69448B

Landlord Signature: Printed Name: Company: Date:



THIS IS AN ORIGINAL UNPUBLISHED DRAWING SUBMITTED FOR USE IN CONNECTION WITH A PROJECT BEING PLANNED FOR YOU BY KIEFFER & CO., INC. IT IS NOT TO BE REPRODUCED, COPIED OR EXHIBITED IN ANY FASHION WITHOUT THE WRITTEN PERMISSION OF KIEFFER & CO., INC.

© 2015 KIEFFER & CO., INC.
585 Bond Street - Lincolnshire, IL 60069
PHONE: (847) 520-1255 FAX: (847) 520-1543
www.kieffersigns.com

CUSTOMER: *Michael's*
LOCATION: Miami Beach, FL
SALESMAN: LC DESIGNER: MAK
DATE: 12/15/15



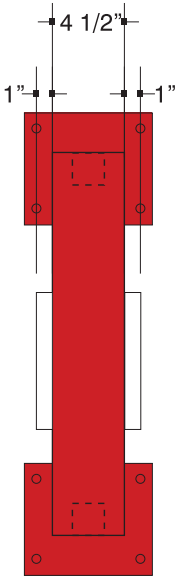
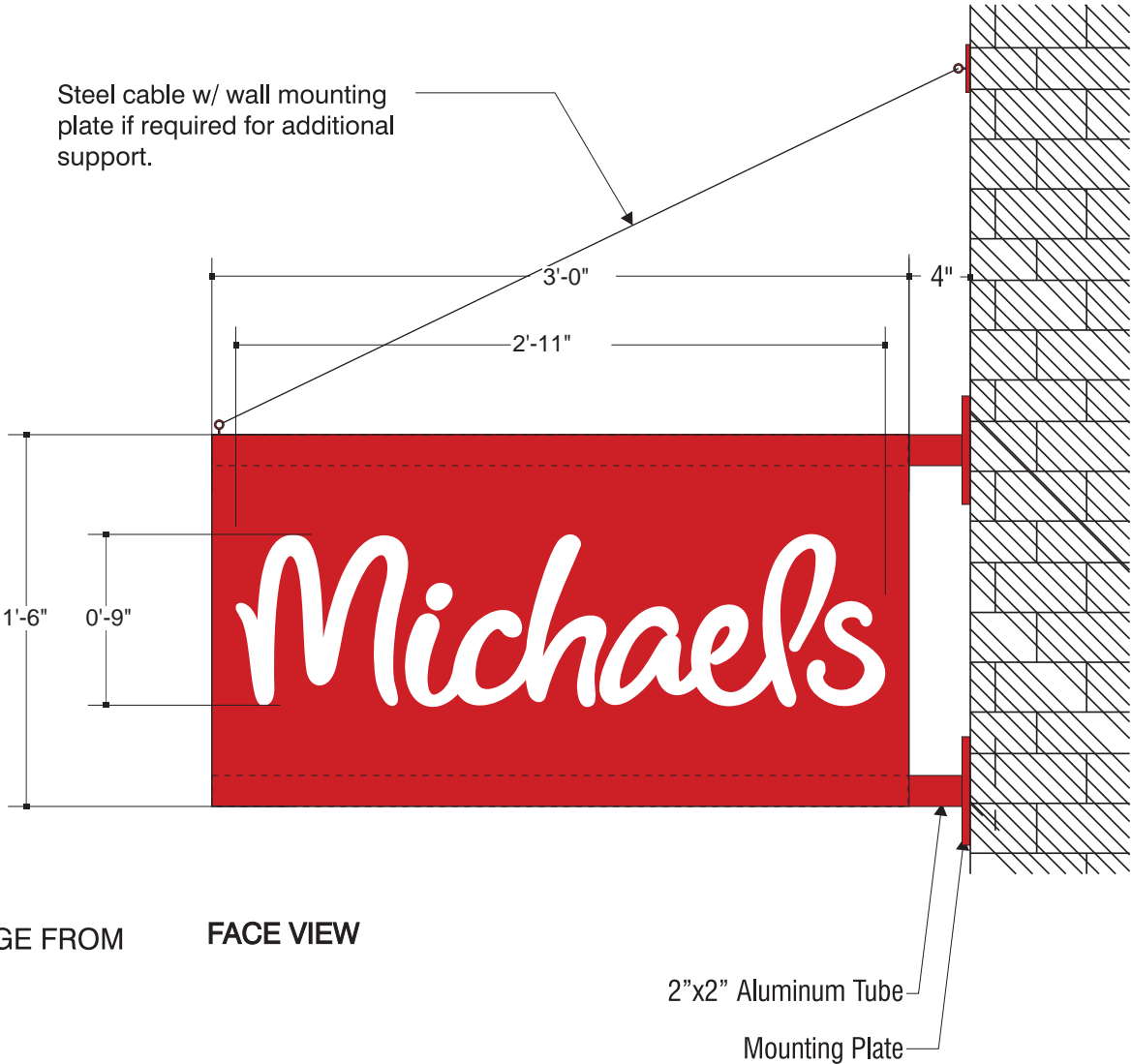
COMPANION FILES

PRODUCTION PROCESSING	
Kieffer Item #	
Job #	
-001	
-002	
-003	
-004	

REVISION:	INITIALS:	DATE:
A	JRS	1/13/15
B	JRS	2/10/16
C	MAK	2/22/16
D	MAK	7/22/16
E	MAK	8/10/16
F		
G		
H		
I		
J		

B69448C

BLADE SIGN NOTE:
If the blade sign is eliminated the letters on the lower wall can be 28 3/4" tall.



SIDE VIEW

NOTE:
CITY COUNTS SQUARE FOOTAGE FROM BOTH SIDES OF SIGN.
3'-0" x 1'6" = 4'-6" SF
4'-6" X 2 sides = 9'-0"

FACE VIEW

GENERAL SPECIFICATIONS:

1" = 1'-0"

Fabricated internally illuminated projecting blade sign constructed using .100 aluminum facing & returns w/ routed logotype graphics. Logotype to 1" deep White push-thru acrylic letters. Entire cabinet & mounting structure to have powder coated finish matching Michaels corporate Red - SEE PAINT SCHEDULE. Illumination to be provided by White LED's. Power source for illumination to be contained inside cabinet.

PAINT SCHEDULE

Powder coated finish to match PMS #186 Red

ALL MOUNTING, ENGINEERING AND ACCESS NEED TO BE FIELD VERIFIED.

Landlord Signature: _____ Printed Name: _____ Company: _____ Date: _____