

**NICHOLS  
BROSCH  
WURST  
WOLFE**  
& ASSOCIATES, INC.  
Architecture & Planning

161 Almeria Avenue  
Coral Gables, FL 33134  
(305) 443-5206  
(305) 446-2872  
AAC 000680

JAMES P. WURST  
ARCHITECT FLA. REG.  
ART1080

OWNER / DEVELOPER:  
**WASHINGTON SQUARED OWNER LLC**  
888 7th Avenue, 27th Floor  
New York, NY 10019  
(212) 894-7090

CONSULTANT:  
**JUNGLES**  
2964 Aviation Avenue  
Coconut Grove, FL 33133  
PH 305.858.6777 FAX 786.703.4382  
www.raymondjungles.com

**601 WASHINGTON AVE MIXED USE - HOTEL**  
601-685 WASHINGTON AVENUE, MIAMI BEACH, FL

SUBMITTAL HISTORY:

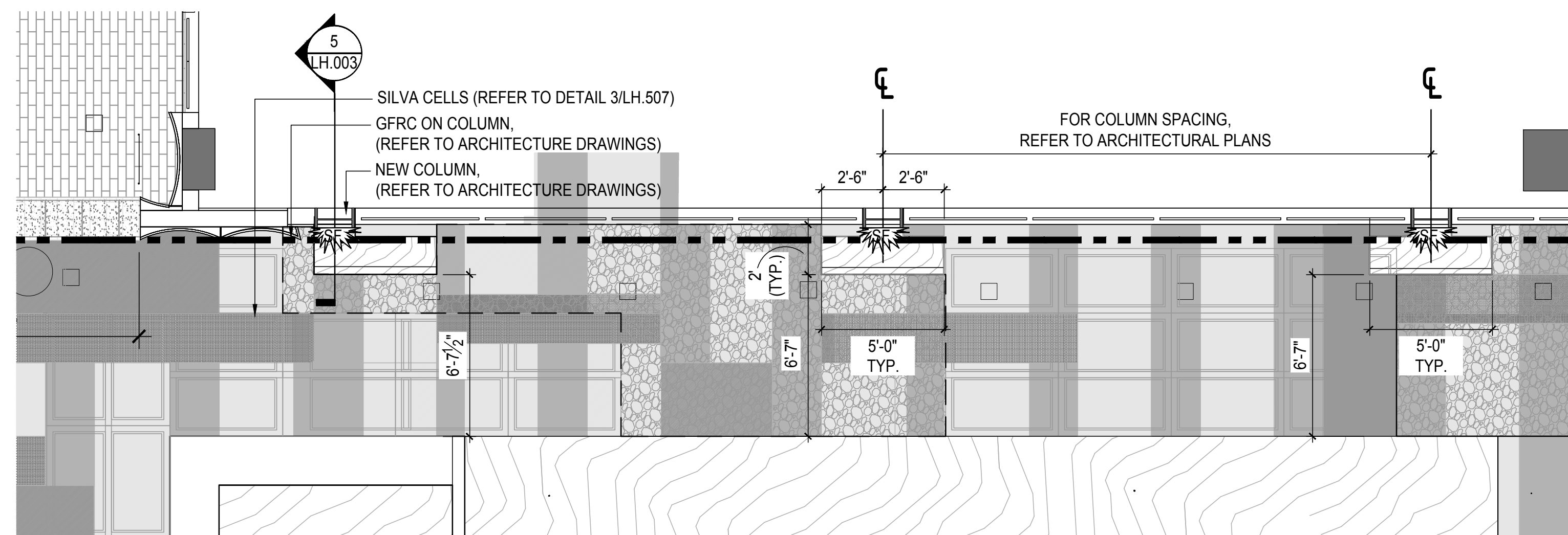
**Revisions**

#	Description	Date
5	Revision 5	02-16-18
6	Revision 6	04-03-18
7	Rev-7 Responses to Planning Comments	04-27-18
8	Revision 8	07-03-18
10	Revision 10	07-12-19

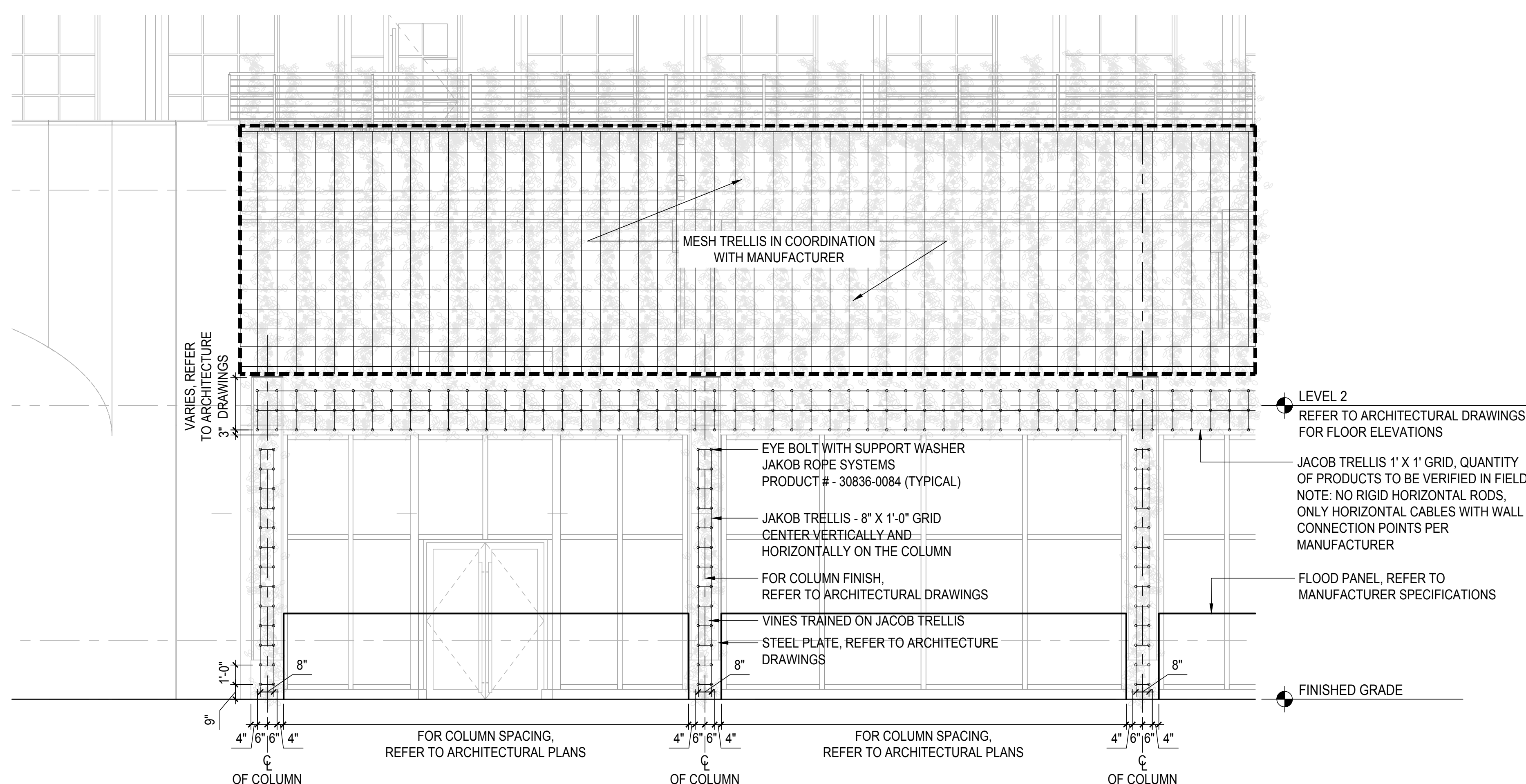
NON-HISTORIC FACADE  
PLANTING DETAILS

14040

LH.509



**1 VINE PLANTER - PLAN**  
Scale: 1/4" = 1'-0"

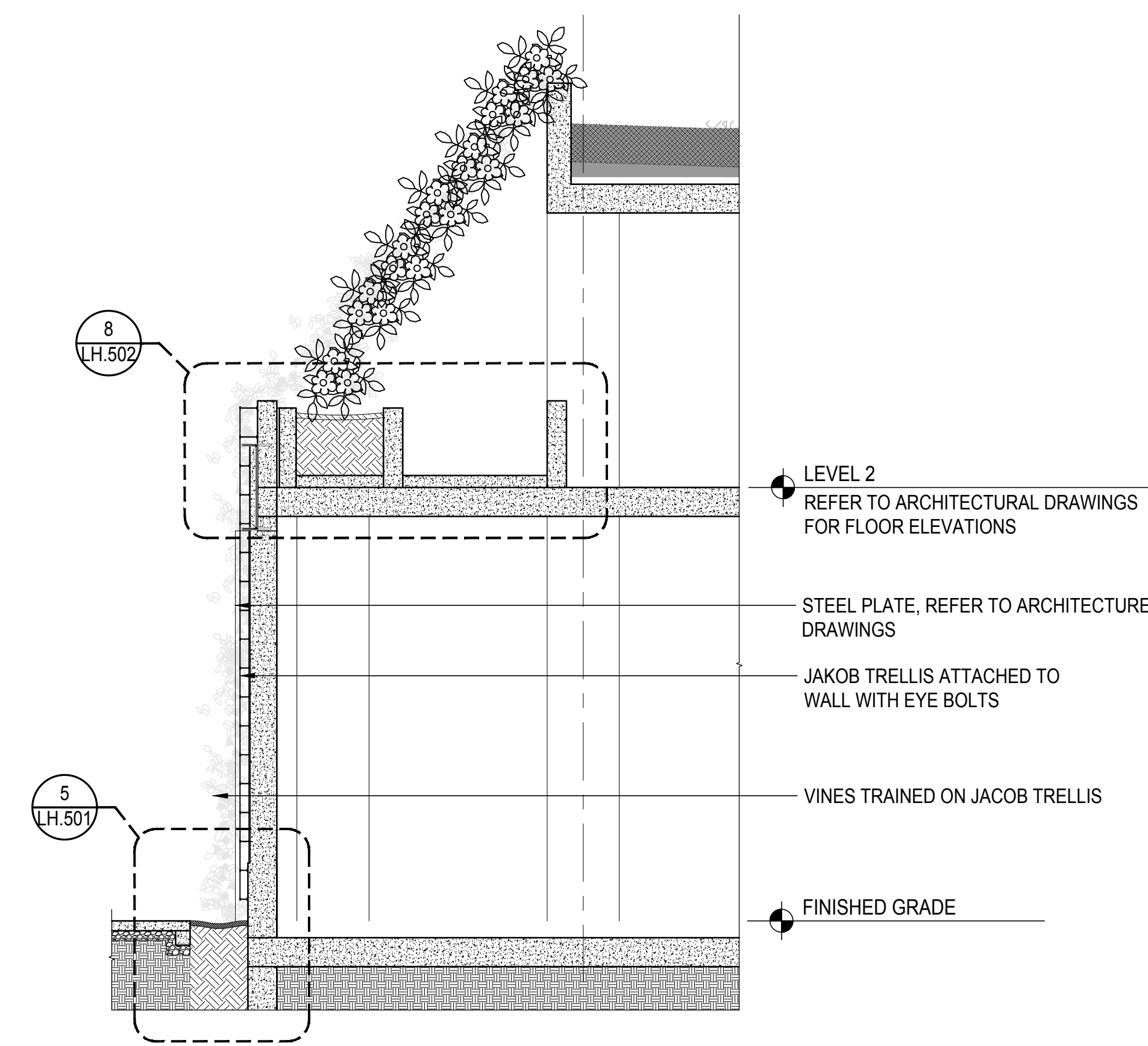
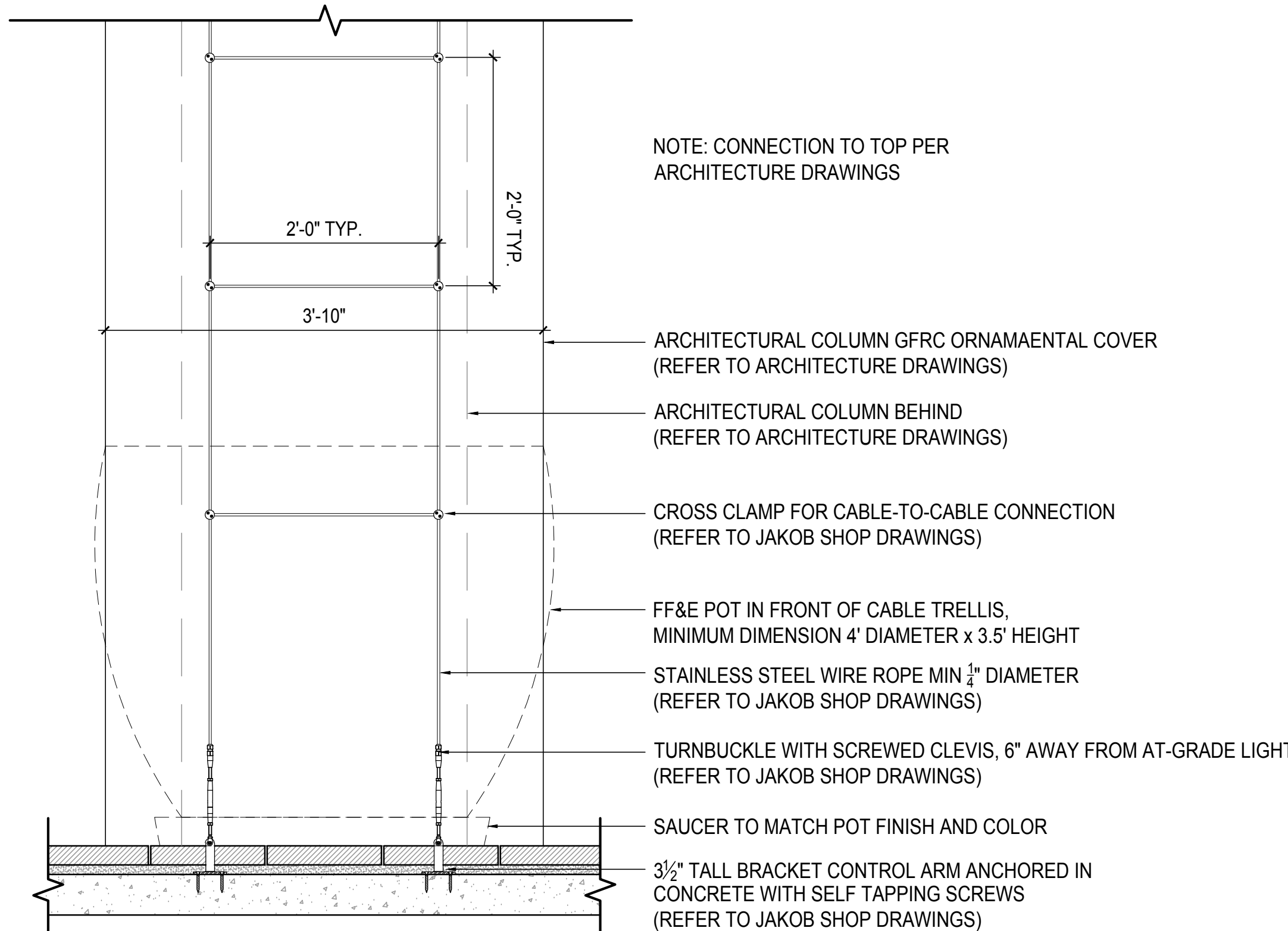


**3 NON-HISTORIC FACADE - ELEVATION**  
Scale: 1/4" = 1'-0"

**NOTES:**

- CONTRACTOR SHALL SUBMIT SAMPLES OF MATERIAL FOR APPROVAL BY LANDSCAPE ARCHITECT, PRIOR TO PROCUREMENT, FABRICATION, AND INSTALLATION.
- CONTRACTOR SHALL PROVIDE DETAILED SHOP DRAWINGS OF THE ENTIRE SYSTEM, INCLUDING EVERY PIECE, CONNECTION, AND CONDITION, FOR APPROVAL BY THE LANDSCAPE ARCHITECT, PRIOR TO PROCUREMENT, FABRICATION, AND INSTALLATION. CONTRACTOR SHALL FIELD VERIFY AS BUILT DIMENSIONS, AND PROVIDE DETAILED ENGINEERED LAYOUT DRAWINGS FOR APPROVAL BY LANDSCAPE ARCHITECT, INCLUDING ALL CONNECTIONS AND COMPONENTS.
- CONTRACTOR SHALL PROVIDE AN ON-SITE MOCK-UP FOR APPROVAL BY THE LANDSCAPE ARCHITECT PRIOR TO INSTALLATION. MOCK-UPS SHALL BE RETAINED FOR THE LIFE OF THE PROJECT TO ENSURE COMPLIANCE WITH APPROVED CONSTRUCTION. MOCK-UPS SHALL BE PROVIDED WELL IN ADVANCE OF INSTALLATION (4 WEEKS) AND SHALL ALLOW FOR MULTIPLE ITERATIONS UNTIL AN APPROVED VERSION IS ACKNOWLEDGED BY THE LANDSCAPE ARCHITECT.
- CONTRACTOR SHALL SUBMIT PRODUCT DATA DEMONSTRATING COMPLIANCE WITH SPECIFICATIONS, PRIOR TO PROCUREMENT, FABRICATION, AND INSTALLATION.

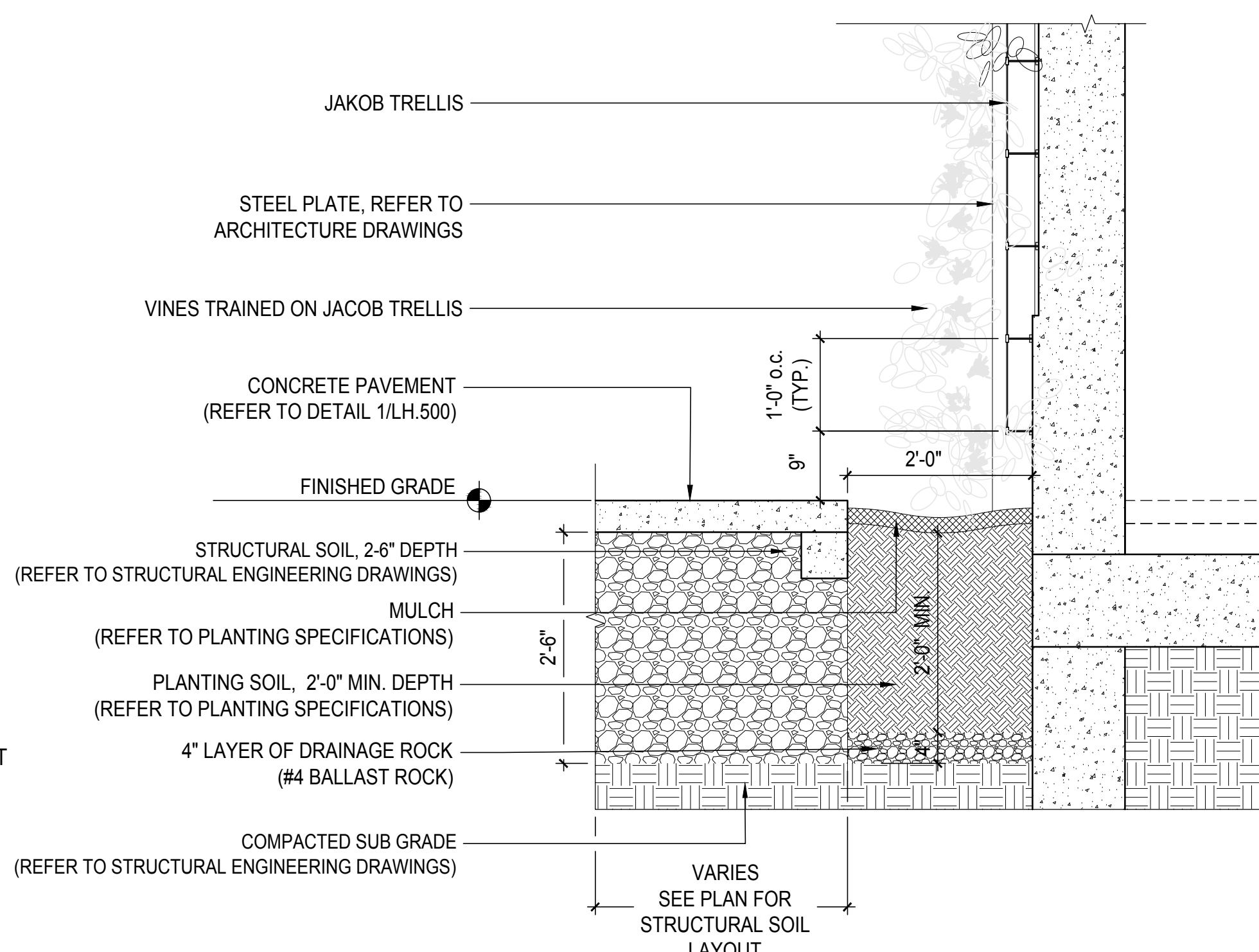
**6 BREEZEWAY VINE CABLE ELEVATION**  
Scale: 1" = 1'-0"



**4 VINE PLANTER - SECTION**  
Scale: 1/4" = 1'-0"

**NOTES:**

- CONTRACTOR SHALL SUBMIT SAMPLES OF MATERIAL FOR APPROVAL BY LANDSCAPE ARCHITECT, PRIOR TO PROCUREMENT, FABRICATION, AND INSTALLATION. CONTRACTOR SHALL PROVIDE DETAILED SHOP DRAWINGS OF THE ENTIRE SYSTEM, INCLUDING EVERY PIECE, CONNECTION, AND CONDITION, FOR APPROVAL BY THE LANDSCAPE ARCHITECT, PRIOR TO PROCUREMENT, FABRICATION, AND INSTALLATION. CONTRACTOR SHALL FIELD VERIFY AS BUILT DIMENSIONS, AND PROVIDE DETAILED ENGINEERED LAYOUT DRAWINGS FOR APPROVAL BY LANDSCAPE ARCHITECT, INCLUDING ALL CONNECTIONS AND COMPONENTS.
- CONTRACTOR SHALL PROVIDE AN ON-SITE MOCK-UP FOR APPROVAL BY THE LANDSCAPE ARCHITECT PRIOR TO INSTALLATION. MOCK-UPS SHALL BE RETAINED FOR THE LIFE OF THE PROJECT TO ENSURE COMPLIANCE WITH APPROVED CONSTRUCTION. MOCK-UPS SHALL BE PROVIDED WELL IN ADVANCE OF INSTALLATION (4 WEEKS) AND SHALL ALLOW FOR MULTIPLE ITERATIONS UNTIL AN APPROVED VERSION IS ACKNOWLEDGED BY THE LANDSCAPE ARCHITECT.
- CONTRACTOR SHALL SUBMIT PRODUCT DATA DEMONSTRATING COMPLIANCE WITH SPECIFICATIONS, PRIOR TO PROCUREMENT, FABRICATION, AND INSTALLATION.



**5 VINE PLANTER - ENLARGEMENT**  
Scale: 3/4"=1'-0"

Approved