

**PRIME CONSULTANT:**



SERVICES PROVIDED:

- LANDSCAPE ARCHITECTURE
- CIVIL ENGINEERING
- COASTAL ENGINEERING
- ELECTRICAL ENGINEERING
- SURVEYING & MAPPING
- COST ESTIMATING

CONCEPTUAL DESIGNER:

**WEST 8**

333 HUDSON STREET  
SUITE 905  
NEW YORK CITY, NY 10013

# NORTH SHORE OPEN SPACE PARK

BETWEEN 79TH AND 87TH STREETS,  
EAST OF COLLINS AVENUE

SEAL: \_\_\_\_\_

REVISIONS:

- 1
- 2
- 3
- 4
- 5
- 6
- 7
- 8
- 9
- 10

SUBMITTAL:  
30% SD

SCALE:  
NTS

DATE:  
NOV 14, 2016

CGA PROJECT NUMBER:

SHEET TITLE:  
ILLUSTRATIVE SITE PLAN

SHEET NUMBER:

L000

**DRAWING FILE:**

4

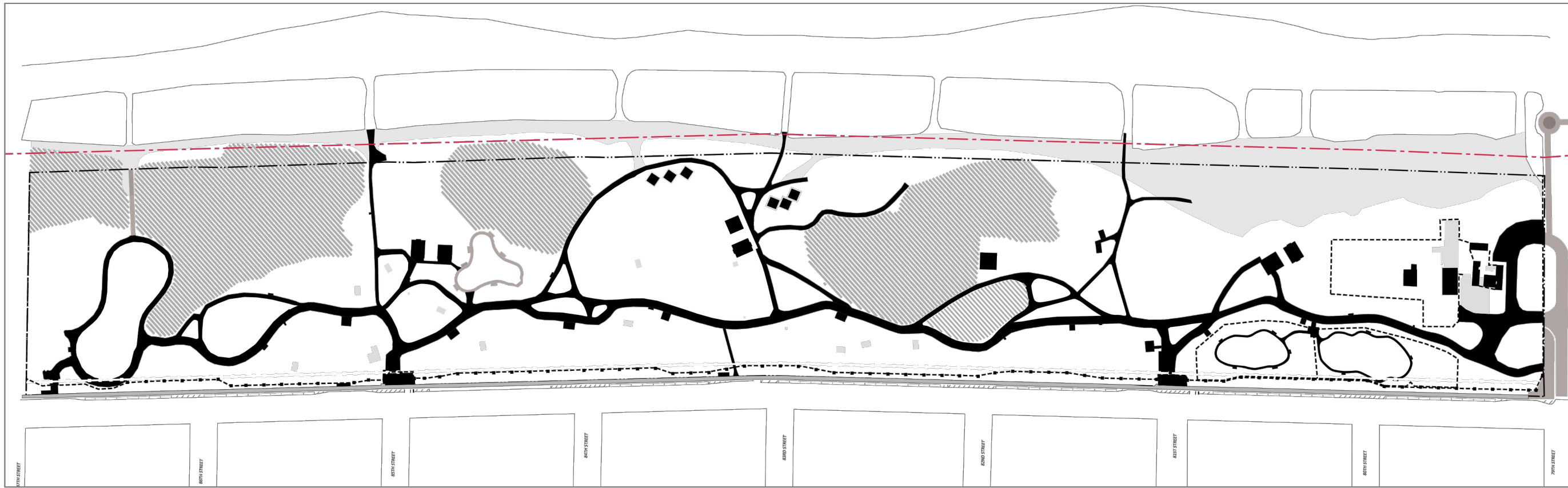
---

3

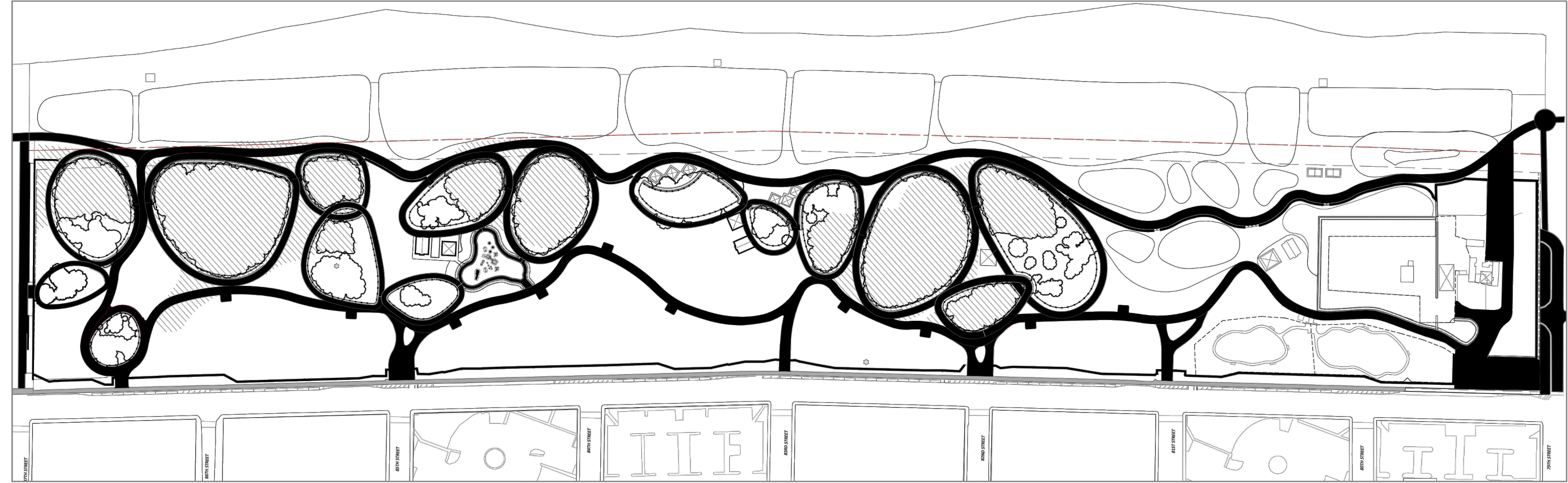
2

1

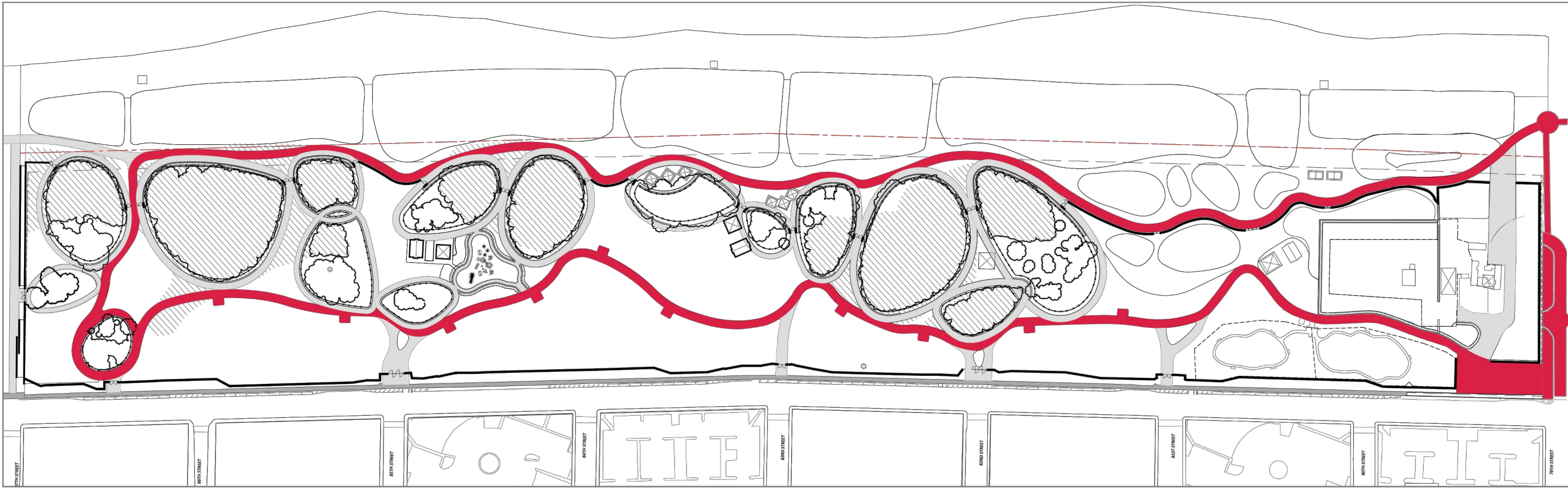




1 EXISTING CIRCULATION DIAGRAM  
- NTS



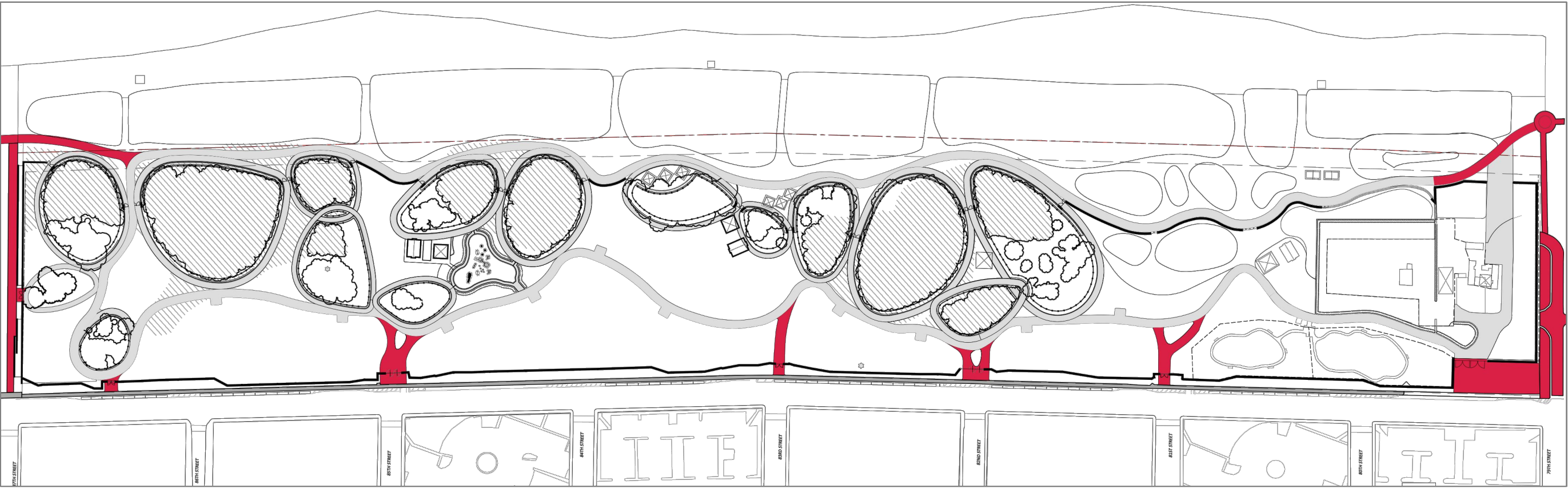
2 PROPOSED CIRCULATION DIAGRAM - ALL PATHWAYS (PH 1)  
- NTS



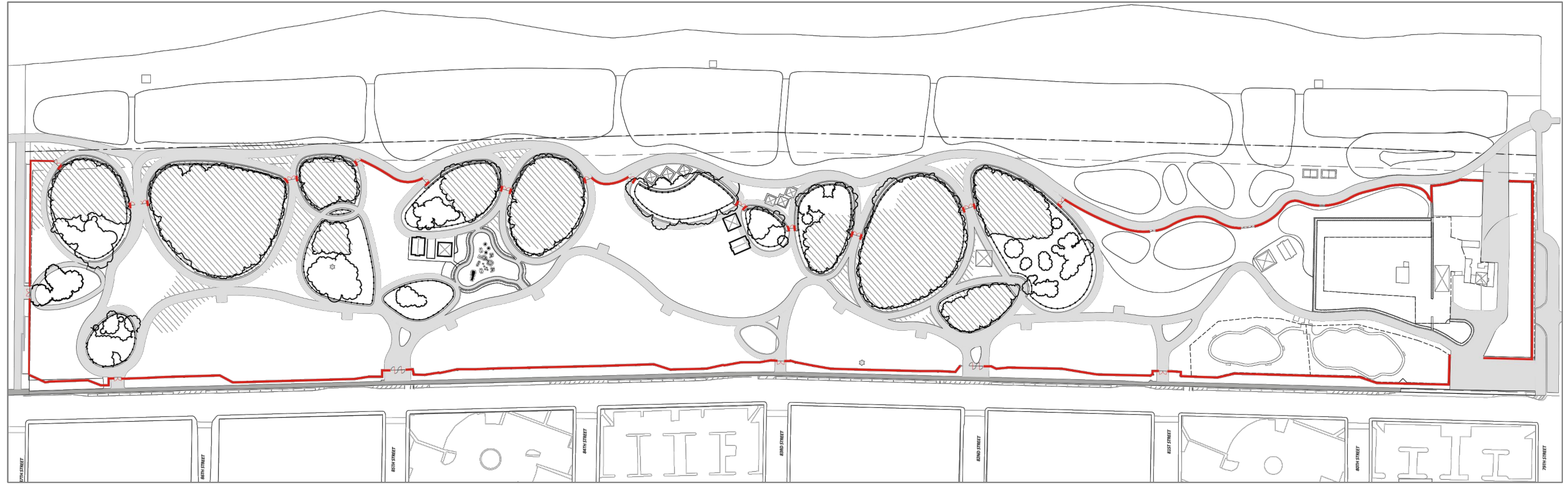
3 PROPOSED PATHWAY DIAGRAM - LOOP (PH 1)  
- NTS



4 PROPOSED PATHWAY DIAGRAM - CONSERVATION ISLAND (PH 1)  
- NTS



5 PROPOSED PATHWAY DIAGRAM - ACCESS (PH 1)  
- NTS



6 PROPOSED ENCLOSURE DIAGRAM (PH 1)  
- NTS

DRAWING FILE:

4

3

2

1

CLIENT:  
**MIAMI BEACH**  
CITY OF MIAMI BEACH  
1700 CONVENTION CENTER DRIVE  
MIAMI BEACH, FL 33139



Calvin, Giordano &  
Associates, Inc.  
1800 Eller Drive, Suite 600 Fort Lauderdale,  
Florida 33316  
Phone: 954-591-7791 • Fax: 954-591-5907  
CERTIFICATES OF AUTHORIZATION:  
LANDSCAPE ARCHITECTURE: LC00000339  
ENGINEERING: 514  
SURVEYING: 6791

SERVICES PROVIDED:  
LANDSCAPE ARCHITECTURE  
CIVIL ENGINEERING  
CONSTRUCTION  
ELECTRICAL ENGINEERING  
SURVEYING & MAPPING  
COST ESTIMATING

CONCEPTUAL DESIGNER:  
**WEST 8**  
333 HUDSON STREET  
SUITE 905  
NEW YORK CITY, NY 10013

ARCHITECTURAL CONSULTANT:  
SYNALOVSKI ROMANIK SAYE, LLC  
1800 ELLER DRIVE  
SUITE 500  
FORT LAUDERDALE, FL 33316  
FIRM LICENSE: AA26001863

GEOTECHNICAL CONSULTANT:  
NUTTING ENGINEERS OF FLORIDA, INC.  
2051 NW 112TH AVENUE  
SUITE 120  
MIAMI, FL 33176  
CERTIFICATE OF AUTHORIZATION: XXXX

## NORTH SHORE OPEN SPACE PARK

BETWEEN 79TH AND 87TH STREETS,  
EAST OF COLLINS AVENUE

SEAL:

REVISIONS:  
1  
2  
3  
4  
5  
6  
7  
8  
9  
10

SUBMITTAL:  
30% SD

SCALE:  
NTS

DATE:  
NOV 14, 2016

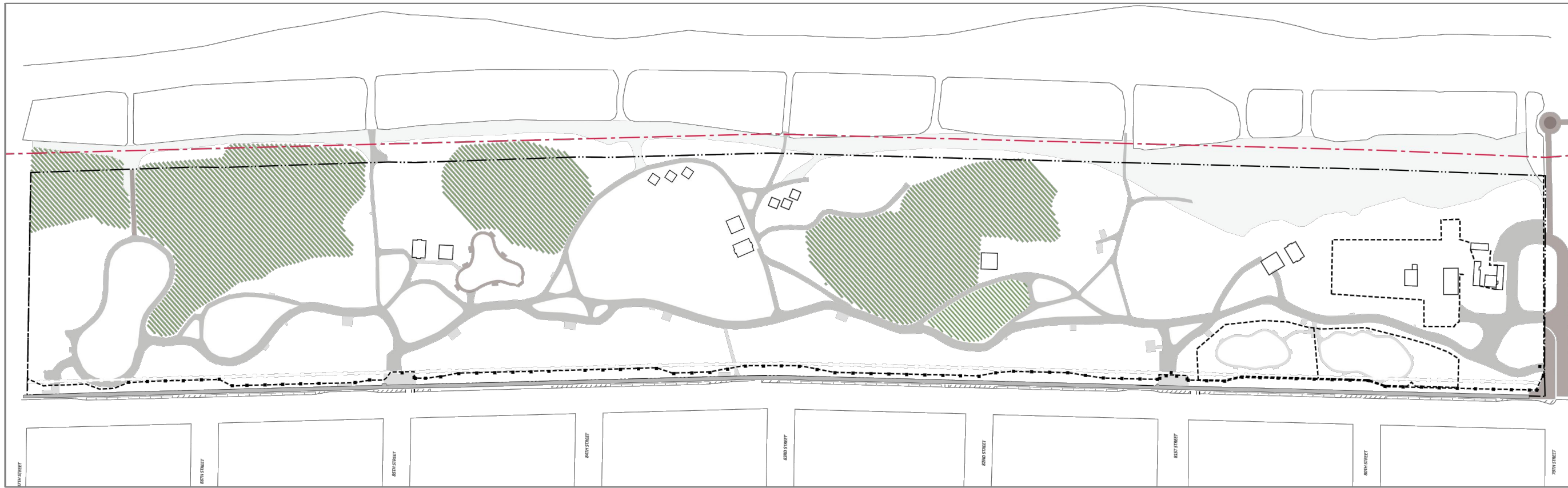
CGA PROJECT NUMBER:

SHEET TITLE:  
ILLUSTRATIVE SITE  
DIAGRAMS

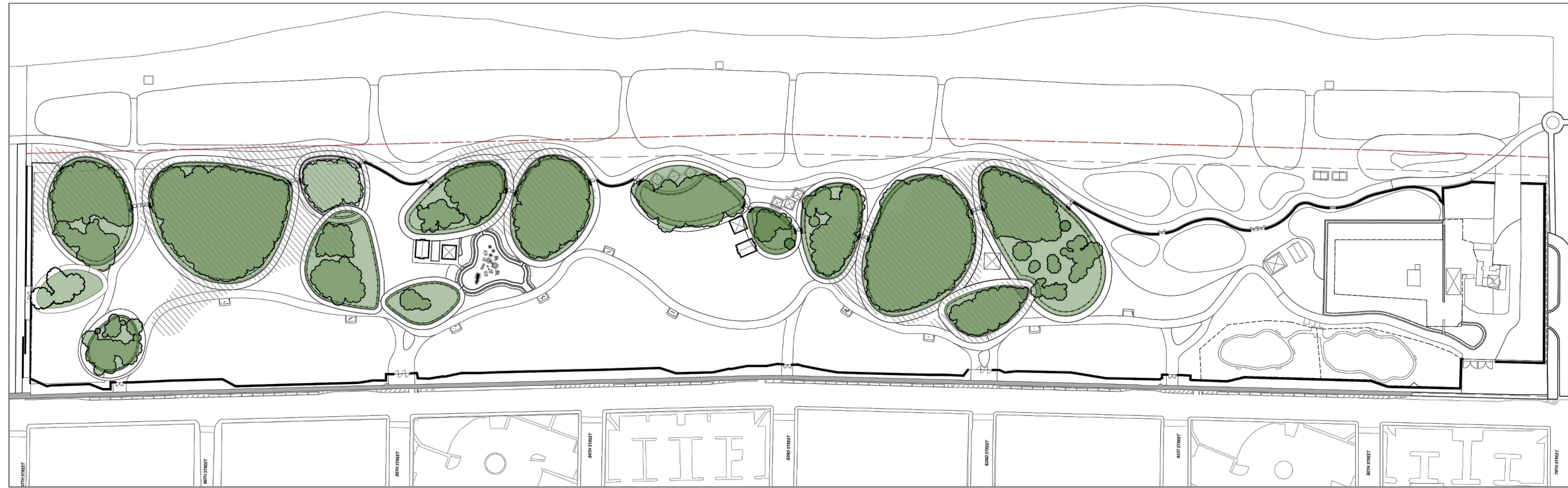
SHEET NUMBER:

# L001

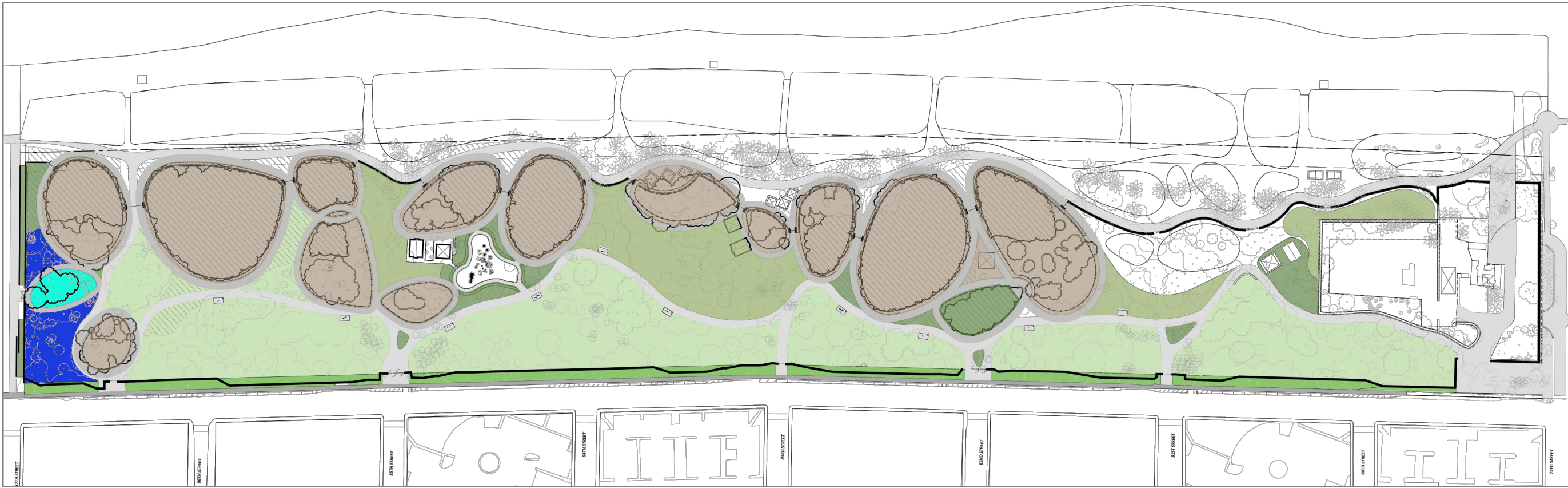




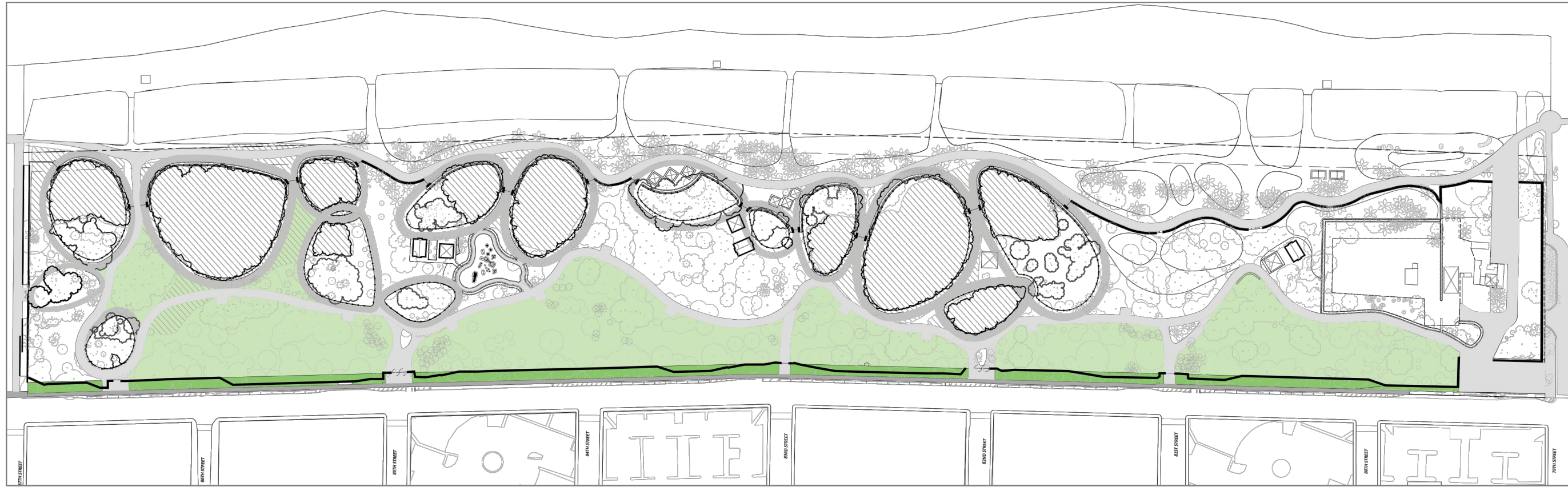
1 EXISTING CONSERVATION AREA DIAGRAM  
- NTS



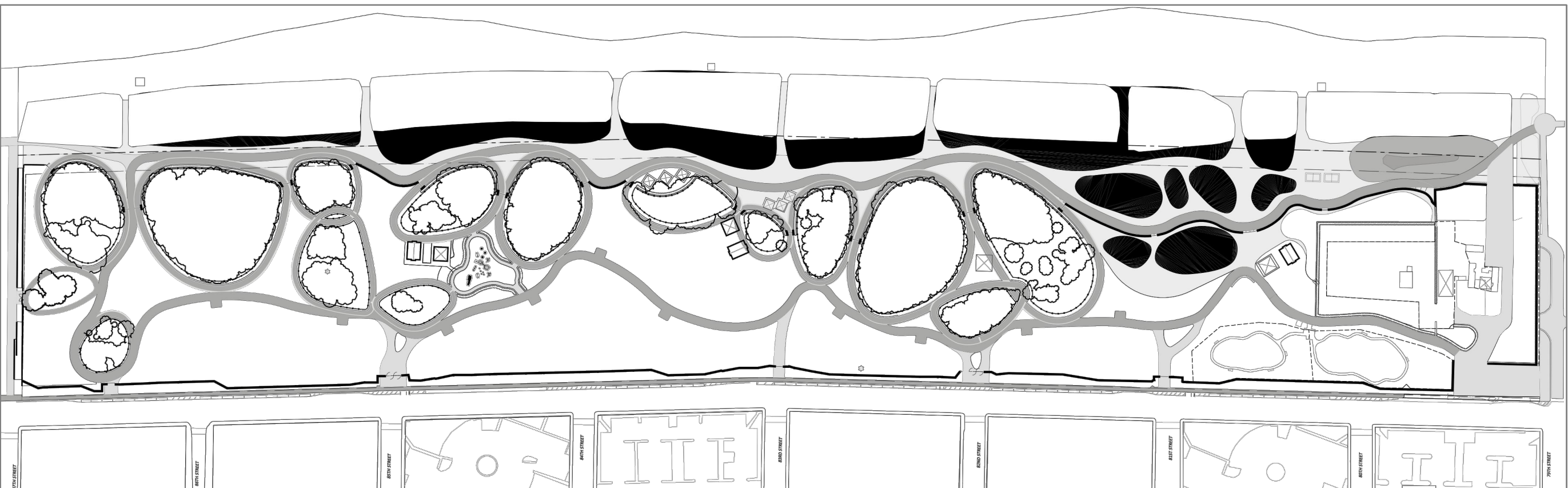
2 PROPOSED CONSERVATION AREA DIAGRAM (PH 1)  
- NTS



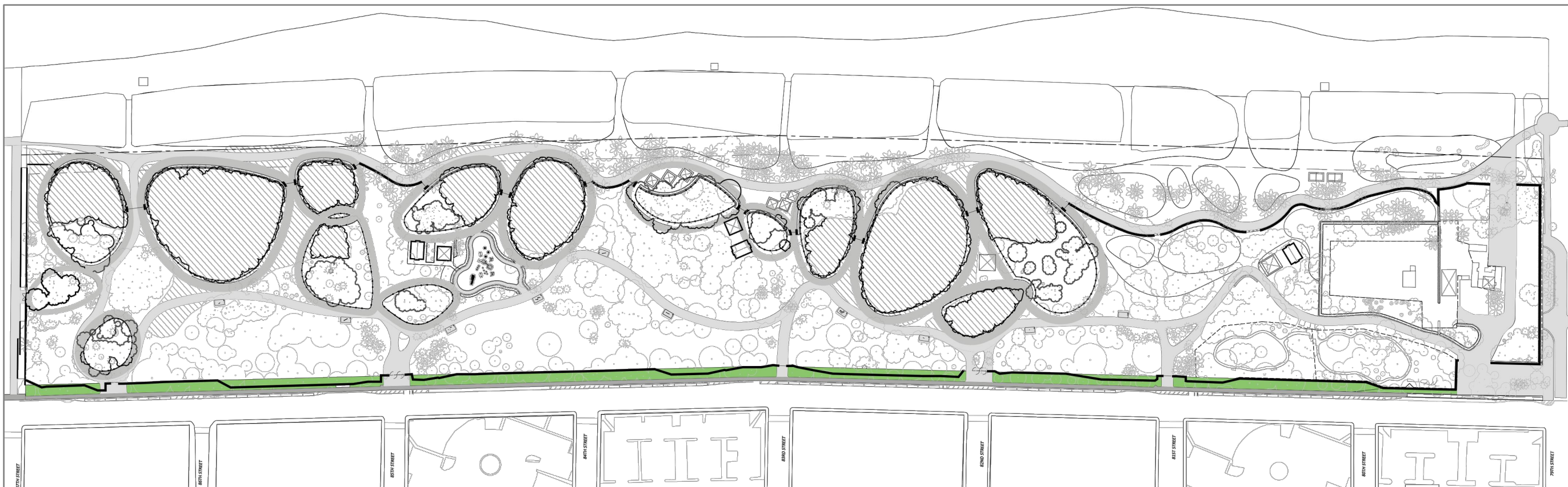
3 PROPOSED PLANTING DIAGRAM - ALL AREAS (PH 1)  
- NTS



4 PROPOSED PLANTING DIAGRAM - LAWN (PH 1)  
- NTS



5 PROPOSED PLANTING DIAGRAM - DUNES (PH 1)  
- NTS



6 PROPOSED PLANTING DIAGRAM - SETBACK (PH 1)  
- NTS

CLIENT:  
**MIAMI BEACH**  
CITY OF MIAMI BEACH  
1700 CONVENTION CENTER DRIVE  
MIAMI BEACH, FL 33139



Calvin, Giordano &  
Associates, Inc.  
1800 Eller Drive, Suite 600 Fort Lauderdale,  
Florida 33316  
Phone: 954-521-7791 • Fax: 954-521-5507  
CERTIFICATES OF AUTHORIZATION:  
LANDSCAPE ARCHITECTURE: LC00000339  
ENGINEERING: 514  
SURVEYING: 6791

SERVICES PROVIDED:  
LANDSCAPE ARCHITECTURE  
CIVIL ENGINEERING  
COASTAL ENGINEERING  
ELECTRICAL ENGINEERING  
SURVEYING & MAPPING  
COST ESTIMATING

CONCEPTUAL DESIGNER:  
**WEST 8**  
333 HUDSON STREET  
SUITE 905  
NEW YORK CITY, NY 10013

ARCHITECTURAL CONSULTANT:  
SYNALOVSKI ROMANIK SAYE, LLC  
1800 ELLER DRIVE  
SUITE 500  
FORT LAUDERDALE, FL 33316  
FIRM LICENSE: AA26001863

GEOTECHNICAL CONSULTANT:  
NUTTING ENGINEERS OF FLORIDA, INC.  
2051 NW 112TH AVENUE  
SUITE 120  
MIAMI, FL 33176  
CERTIFICATE OF AUTHORIZATION: XXXX

## NORTH SHORE OPEN SPACE PARK

BETWEEN 79TH AND 87TH STREETS,  
EAST OF COLLINS AVENUE

SEAL:

REVISIONS:  
1  
2  
3  
4  
5  
6  
7  
8  
9  
10

SUBMITTAL:  
30% SD

SCALE:  
NTS

DATE:  
NOV 14, 2016

CGA PROJECT NUMBER:

SHEET TITLE:  
ILLUSTRATIVE SITE  
DIAGRAMS

SHEET NUMBER:

# L002