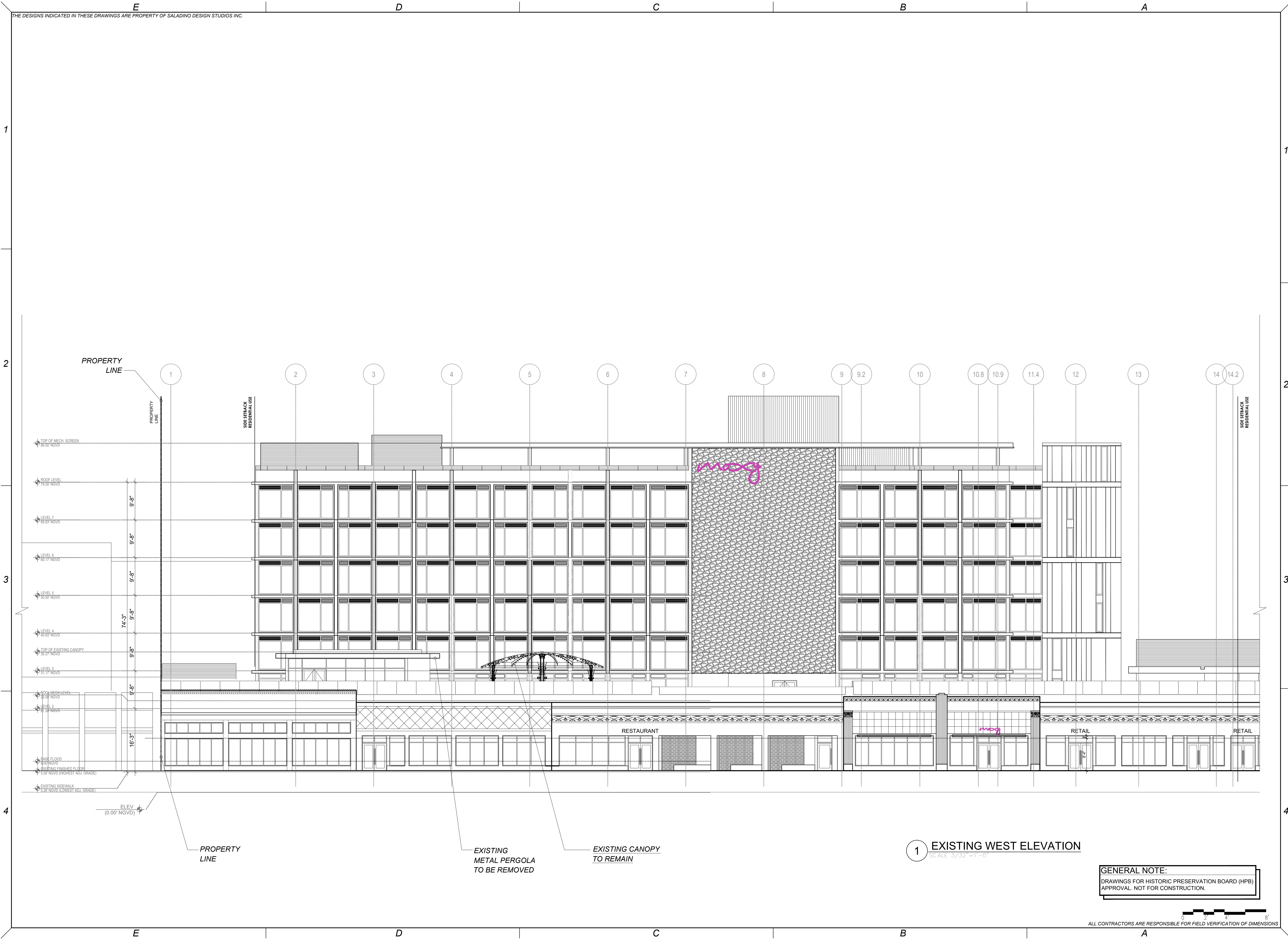


THE DESIGNS INDICATED IN THESE DRAWINGS ARE PROPERTY OF SALADINO DESIGN STUDIOS INC.



1 EXISTING WEST ELEVATION
SCALE: 3/32"=1'-0"

GENERAL NOTE:
DRAWINGS FOR HISTORIC PRESERVATION BOARD (HPB)
APPROVAL. NOT FOR CONSTRUCTION.

ALL CONTRACTORS ARE RESPONSIBLE FOR FIELD VERIFICATION OF DIMENSIONS

STAMP:

MANUEL REY
REGISTERED PROFESSIONAL ARCHITECT
STATE OF FLORIDA LICENSE NO. 8917
AA#26003757 IB#26001842

SALADINO DESIGN STUDIOS
2

7265 NE 4ND AVE. SUITE 101
MIAMI FL 33138
786.953.7455
WWW.SALADINODESIGN.COM

PROJECT:
MOXY HOTEL
915 WASHINGTON AVE
MIAMI BEACH, FL 33139

OWNER:
LIGHTSTONE
460 PARK AVENUE
NEW YORK, NY, 10022

M.E.P.:
ARPE ENGINEERING
2020 PONCE DE LEON BLVD, SUITE 1002
CORAL GABLES, FL 33134
PH: 305.444.9809

STRUCTURAL:
YHCE ENGINEERING
99 NW 27TH AVE
MIAMI, FL 33125
PH: 305.969.9423

MTCI / PRIVATE PROVIDER:

GENERAL NOTES:
ALL LEGAL RIGHTS, INCLUDING BUT NOT LIMITED TO, COPYRIGHT AND DESIGN, PATENT RIGHTS, IN THE DESIGN, ARRANGEMENTS AND PLANS SHOWN ON THIS DOCUMENT ARE THE PROPERTY OF SALADINO DESIGN STUDIOS INC. AND WERE DEVELOPED FOR USE SOLELY ON THIS PROJECT. THEY MAY NOT BE USED OR REUSED IN WHOLE OR IN PART, EXCEPT IN CONNECTION WITH THIS PROJECT, WITHOUT THE PRIOR WRITTEN CONSENT OF SDS, INC.

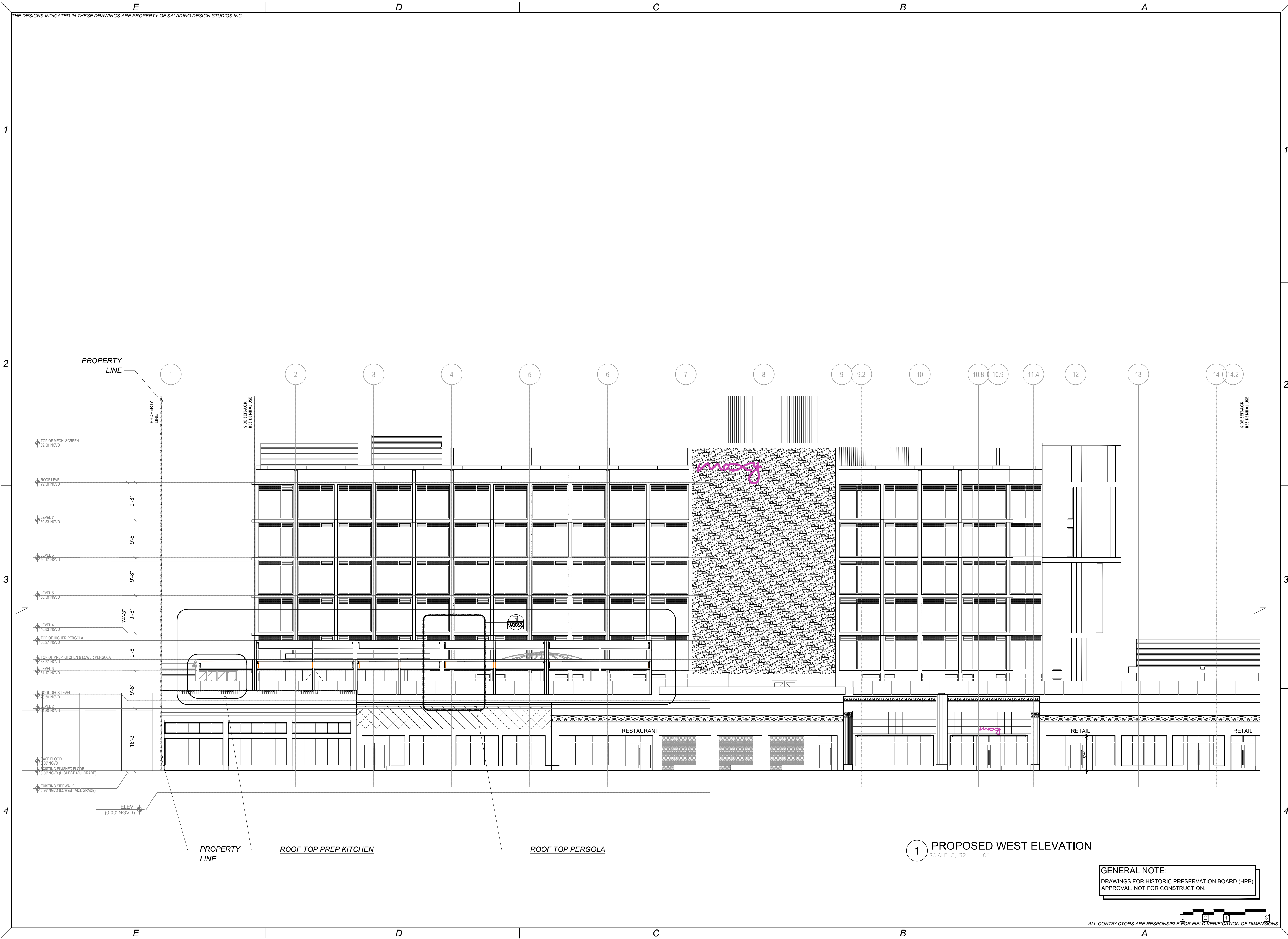
REVISIONS		
ISSUE	DATE	FOR

PROJECT No: 1915 **DRAWN BY:** CAPU
SCALE: **CHECKED BY:** SS
DATE: **DATE:** **DATE:**

DRAWING:
EXISTING WEST ELEVATION

SHEET NO. A0.03.1
HISTORIC PRESERVATION BOARD

THE DESIGNS INDICATED IN THESE DRAWINGS ARE PROPERTY OF SALADINO DESIGN STUDIOS INC.



1 PROPOSED WEST ELEVATION
SCALE: 3/32"=1'-0"

GENERAL NOTE:
DRAWINGS FOR HISTORIC PRESERVATION BOARD (HPB)
APPROVAL. NOT FOR CONSTRUCTION.

ALL CONTRACTORS ARE RESPONSIBLE FOR FIELD VERIFICATION OF DIMENSIONS

STAMP:

MANUEL REY
REGISTERED PROFESSIONAL ARCHITECT
STATE OF FLORIDA LICENSE NO. AR8617
AA#26003757 IB#26001842

SALADINO DESIGN STUDIOS
2
7265 NE 4ND AVE. SUITE 101
MIAMI FL 33138
786.953.7455
WWW.SALADINODESIGN.COM

PROJECT:
MOXY HOTEL
915 WASHINGTON AVE
MIAMI BEACH, FL 33139

OWNER:
LIGHTSTONE
460 PARK AVENUE
NEW YORK, NY, 10022

M.E.P.:
ARPE ENGINEERING
2020 PONCE DE LEON BLVD, SUITE 1002
CORAL GABLES, FL 33134
PH: 305.444.9809

STRUCTURAL:
YHCE ENGINEERING
99 NW 27TH AVE
MIAMI, FL 33125
PH: 305.969.9423

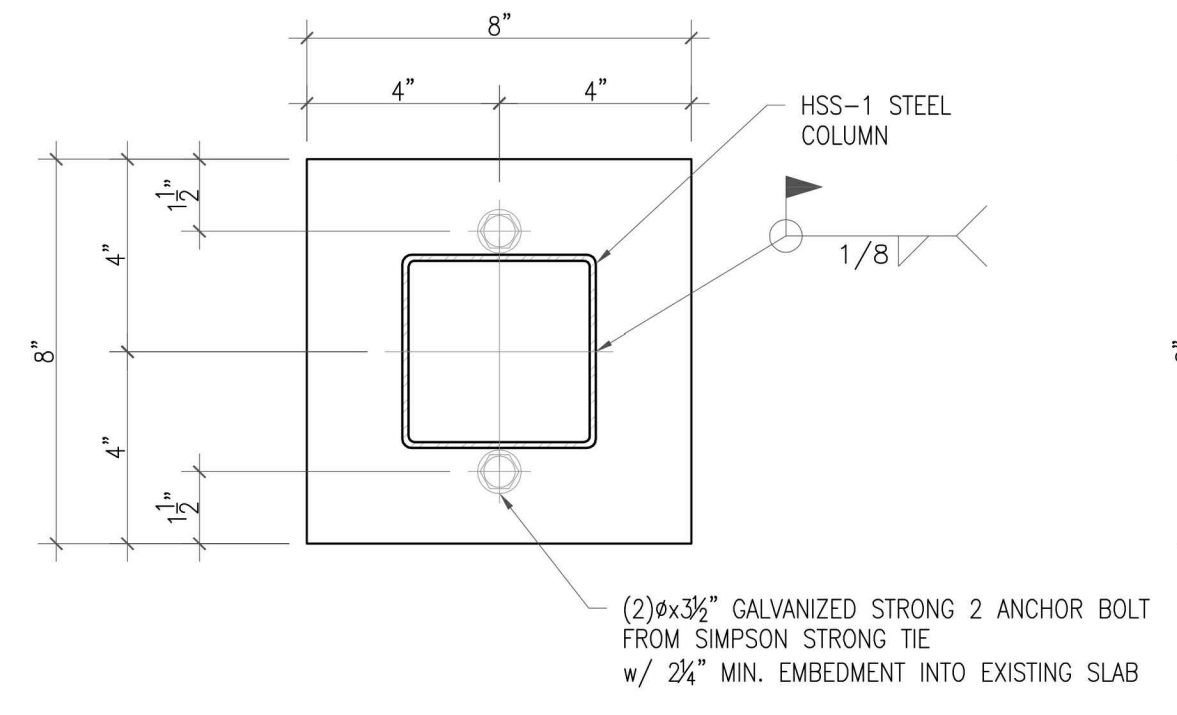
MTCI / PRIVATE PROVIDER:

GENERAL NOTES:
ALL LEGAL RIGHTS, INCLUDING BUT NOT LIMITED TO, COPYRIGHT AND DESIGN, PATENT RIGHTS, IN THE DESIGN, ARRANGEMENTS, AND PLANS SHOWN ON THIS DOCUMENT ARE THE PROPERTY OF SALADINO DESIGN STUDIOS INC. AND WERE DEVELOPED FOR USE SOLELY ON THIS PROJECT. THEY MAY NOT BE USED OR REUSED IN WHOLE OR IN PART, EXCEPT IN CONNECTION WITH THIS PROJECT, WITHOUT THE PRIOR WRITTEN CONSENT OF SDS, INC.

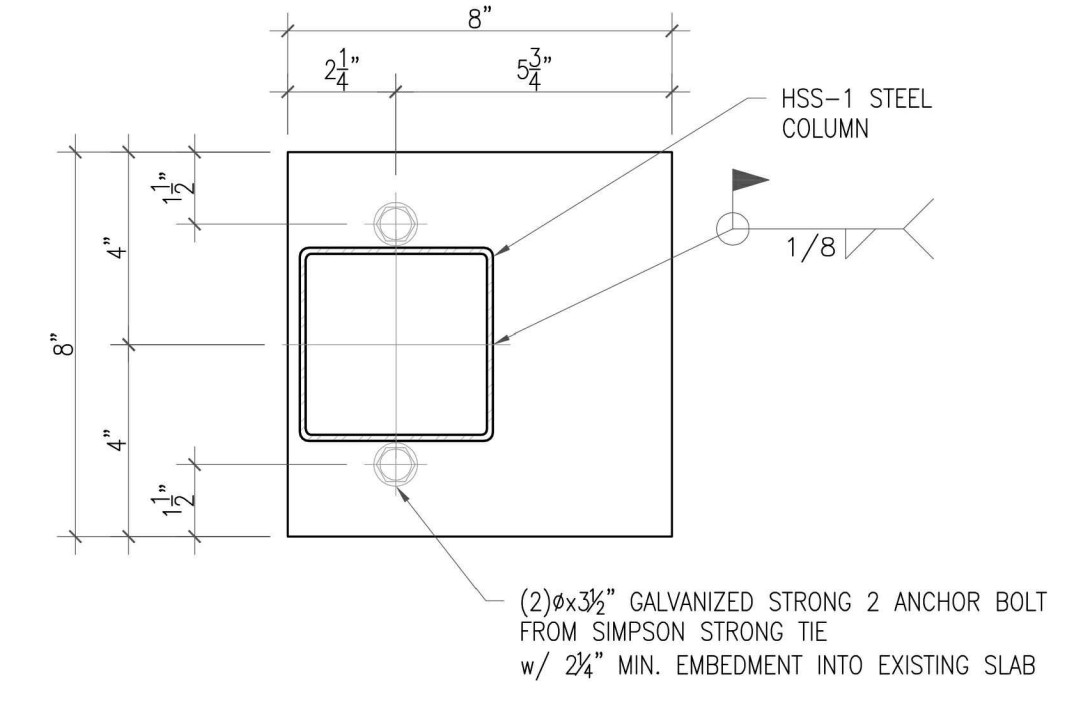
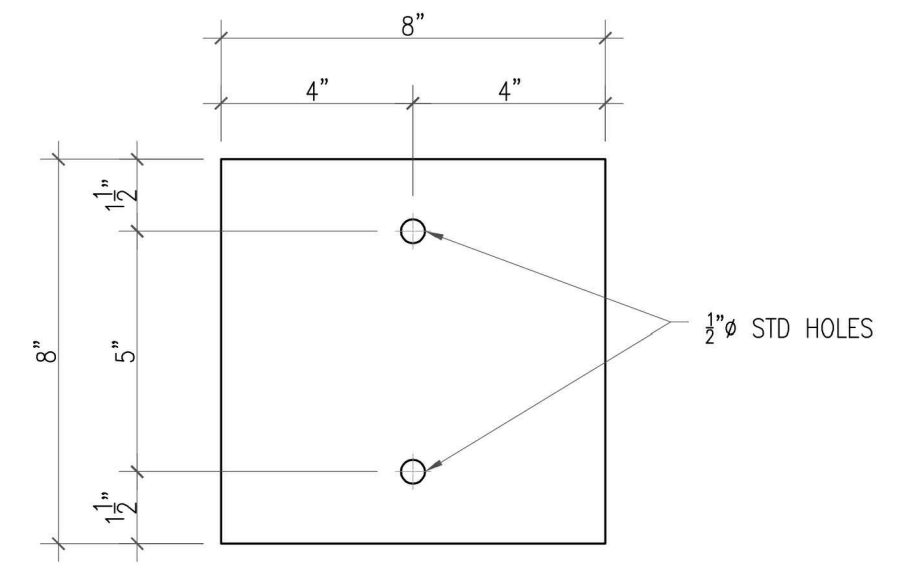
ISSUE	ISSUE DATE	FOR

PROJECT No: 1915 DRAWN BY: CAPU
SCALE: CHECKED BY: SS
DATE:
DRAWING:
PROPOSED WEST ELEVATION

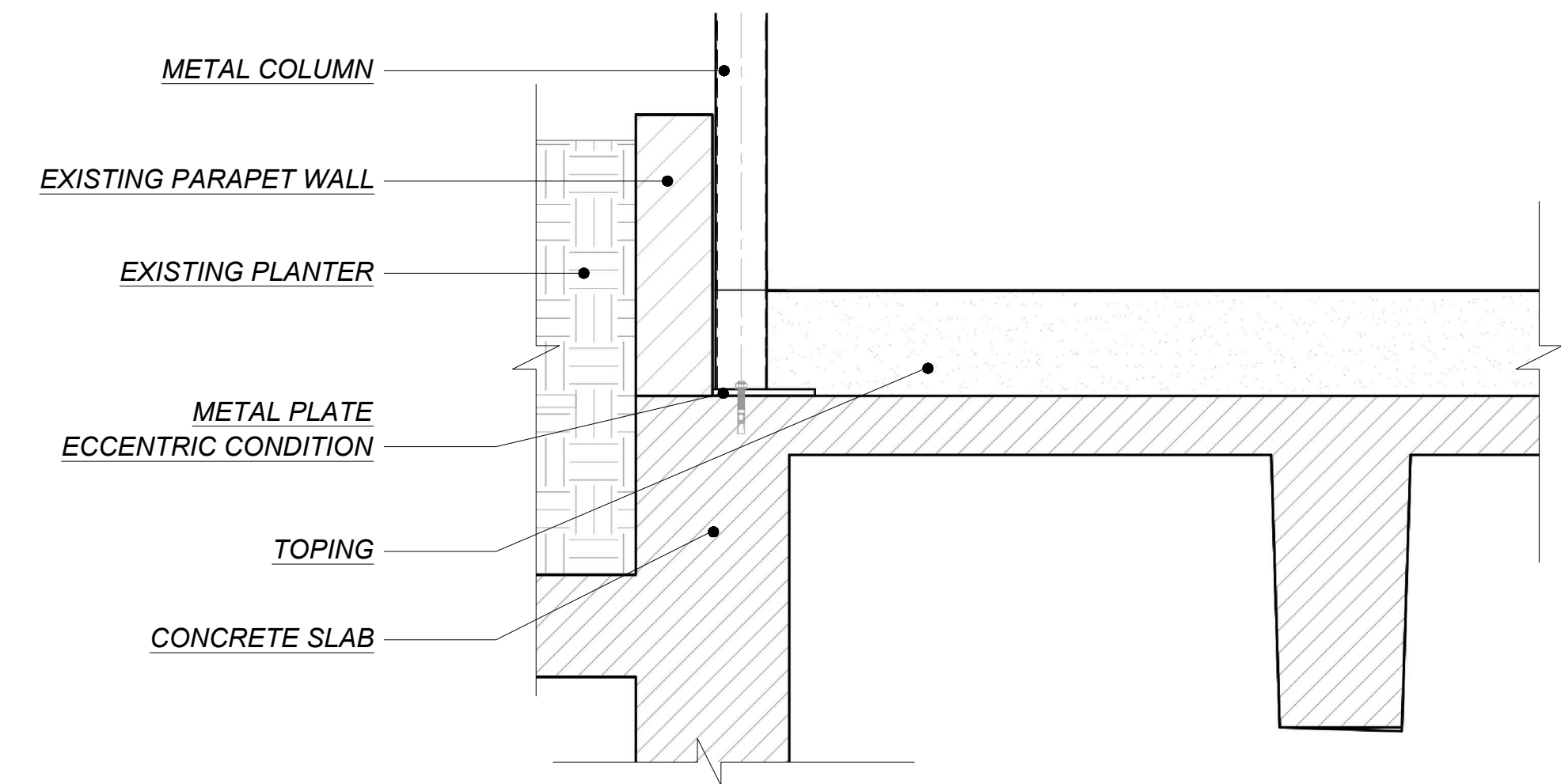
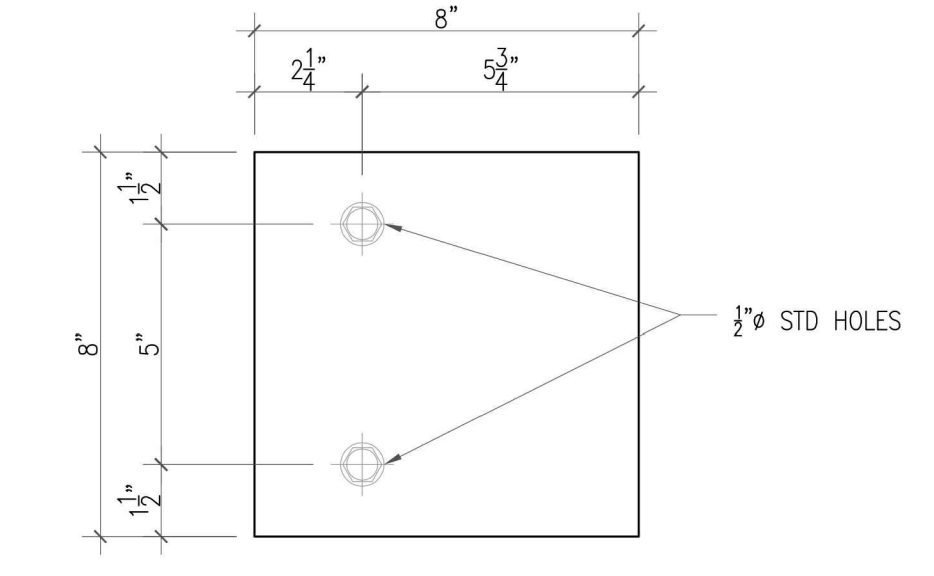
SHEET NO. **A0.03.2**
HISTORIC PRESERVATION BOARD



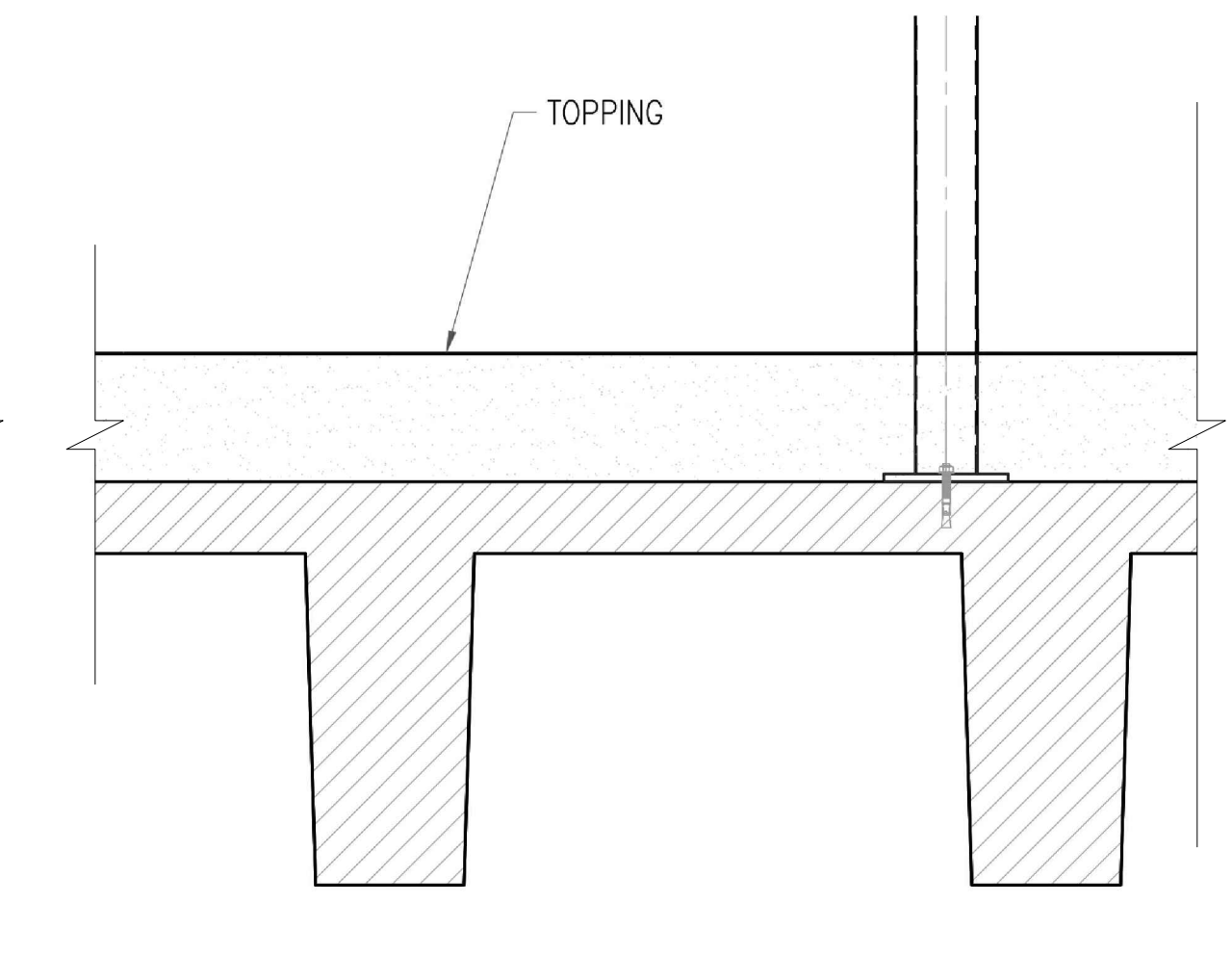
5 BASE PLATE
SCALE 3"=1'-0"



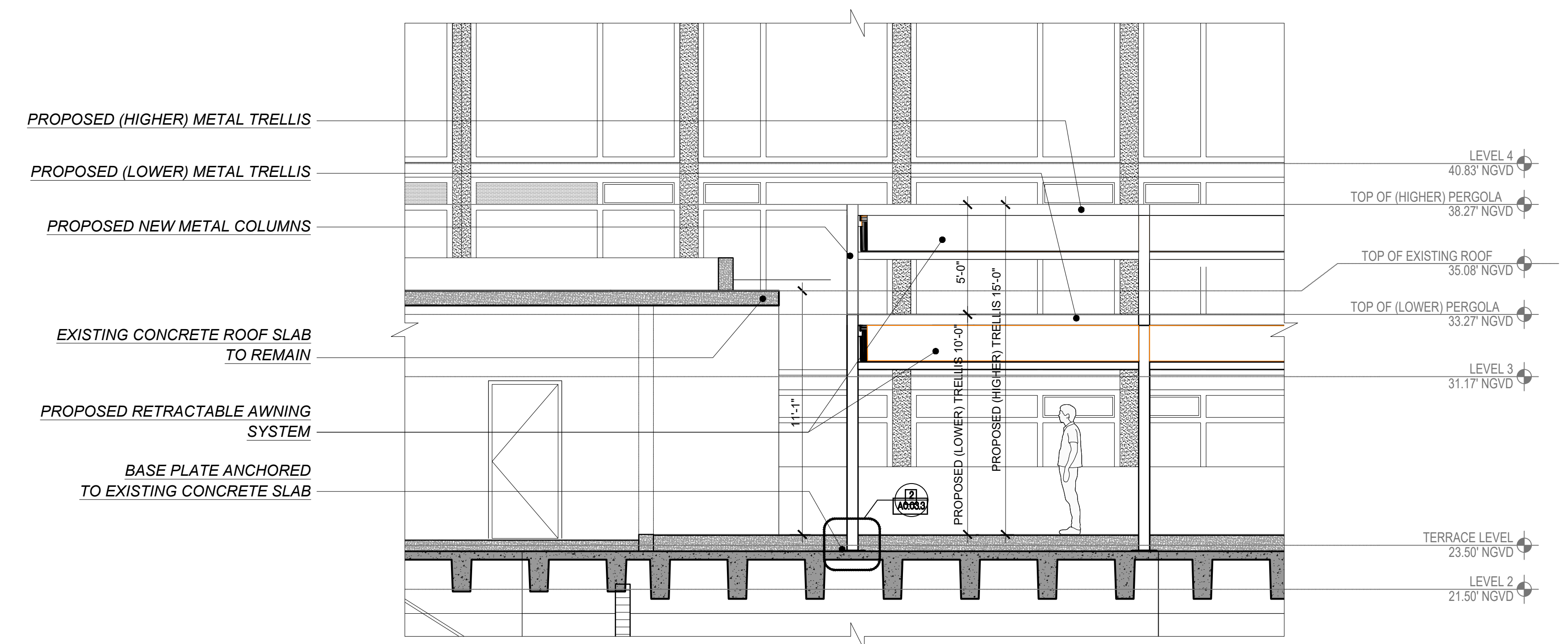
4 BASE PLATE ECCENTRIC CONDITION
SCALE 3"=1'-0"



3 SECTION @ PLANTER
SCALE 1"=1'-0"



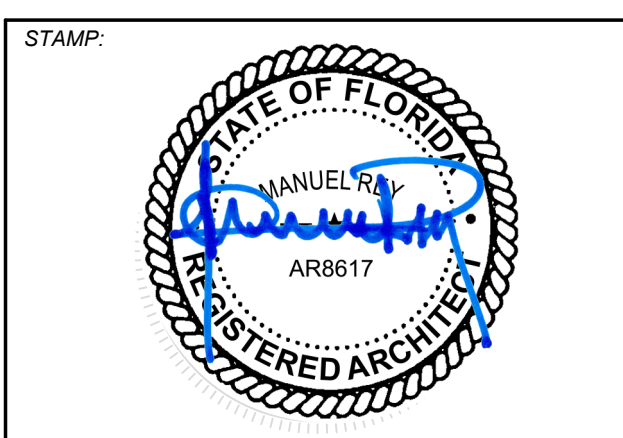
2 SECTION @ COLUMN CONNECTION
SCALE 1"=1'-0"



1 SECTION
SCALE 1/4"=1'-0"

GENERAL NOTE:
DRAWINGS FOR HISTORIC PRESERVATION BOARD (HPB) APPROVAL. NOT FOR CONSTRUCTION.

STRUCTURAL NOTE:
THE STRUCTURAL DETAILS ARE BY YHCE ENGINEERING. YHCE ENGINEERING TO BE RESPONSIBLE FOR DESIGN DETAILS.



MANUEL REY
REGISTERED PROFESSIONAL ARCHITECT
STATE OF FLORIDA LICENSE NO. 8617
AA#26003757 IB#26001842



7265 NE 4ND AVE. SUITE 101
MIAMI FL 33138
786.953.7455
WWW.SALADINODESIGN.COM

PROJECT:
MOXY HOTEL
915 WASHINGTON AVE
MIAMI BEACH, FL 33139

OWNER:
LIGHTSTONE
460 PARK AVENUE
NEW YORK, NY, 10022

M.E.P.:
ARPE ENGINEERING
2020 PONCE DE LEON BLVD. SUITE 1002
CORAL GABLES, FL 33134
PH: 305.444.9809

STRUCTURAL:
YHCE ENGINEERING
99 NW 27TH AVE
MIAMI, FL 33125
PH: 305.969.9423

MTCI / PRIVATE PROVIDER:

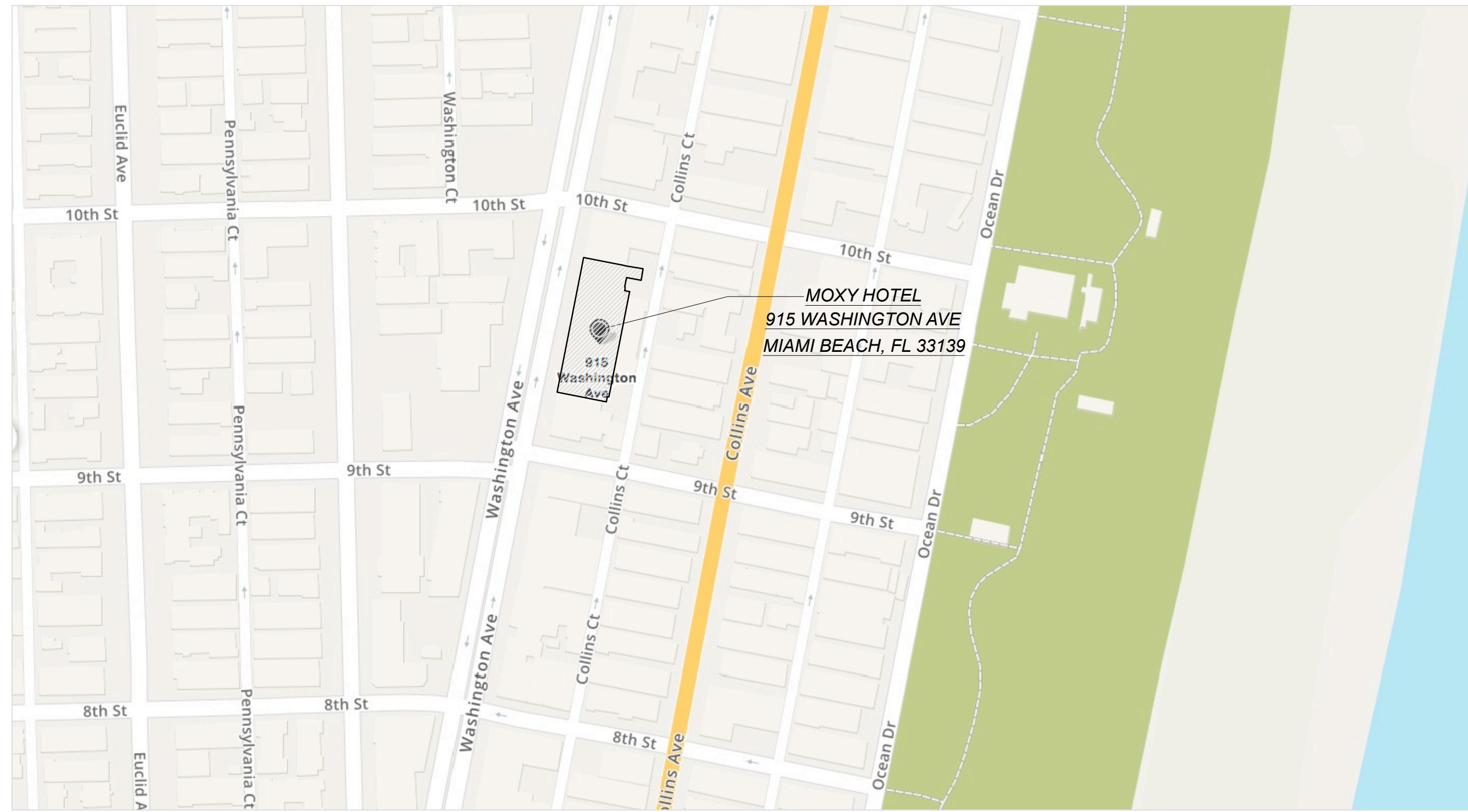
GENERAL NOTES:
ALL LEGAL RIGHTS, INCLUDING BUT NOT LIMITED TO, COPYRIGHT AND DESIGN, PATENT RIGHTS, IN THE DESIGN, ARRANGEMENTS AND PLANS SHOWN ON THIS DOCUMENT ARE THE PROPERTY OF SALADINO DESIGN STUDIOS INC. AND WERE DEVELOPED FOR USE SOLELY ON THIS PROJECT. THEY MAY NOT BE USED OR REPRODUCED IN WHOLE OR IN PART, EXCEPT IN CONNECTION WITH THIS PROJECT, WITHOUT THE PRIOR WRITTEN CONSENT OF SDS, INC.

REVISIONS	
ISSUE	ISSUE DATE/FOR

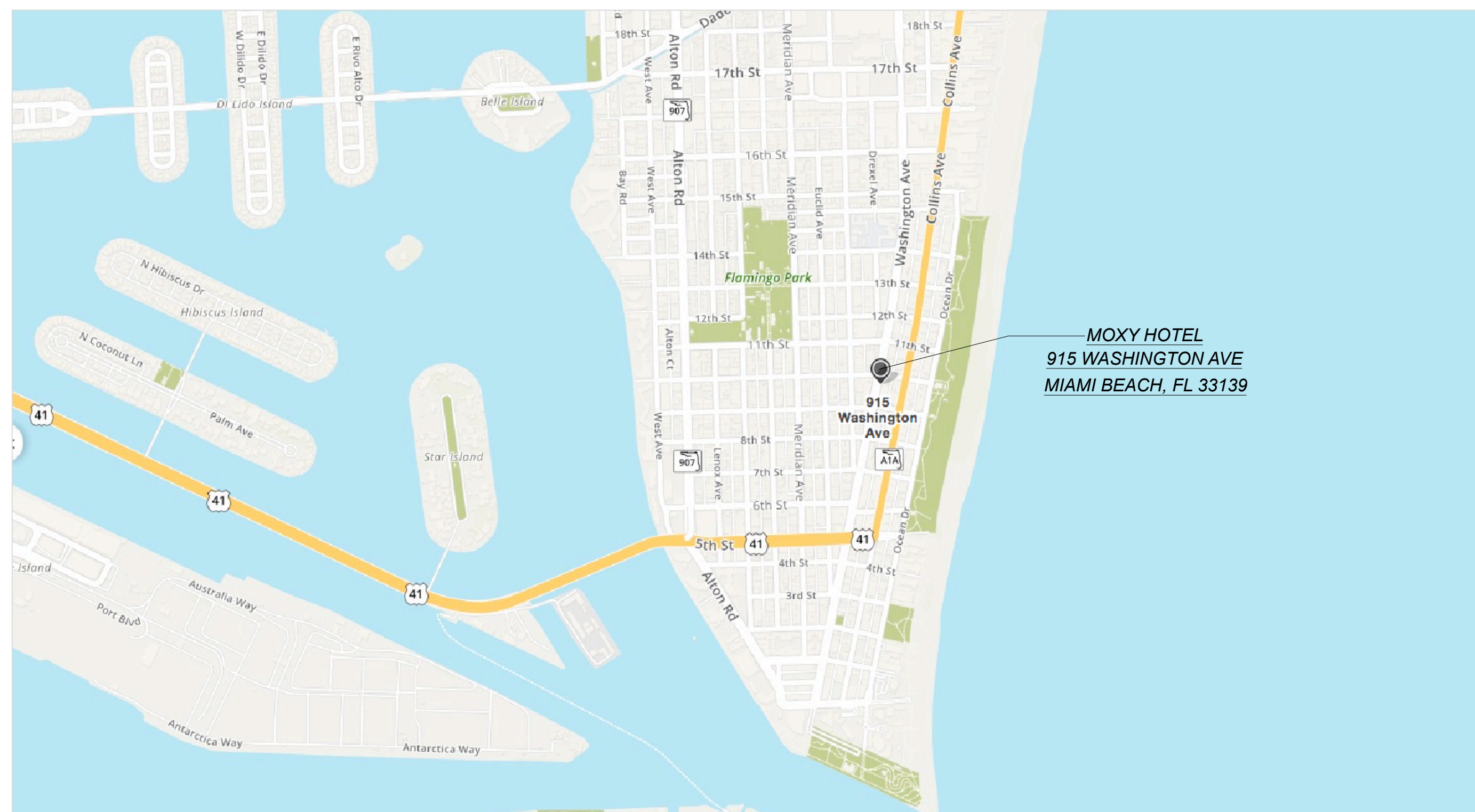
PROJECT No: 1915 DRAWN BY: CAPU
SCALE: CHECKED BY: SS
DATE:

DRAWING:
SECTION & DETAILS

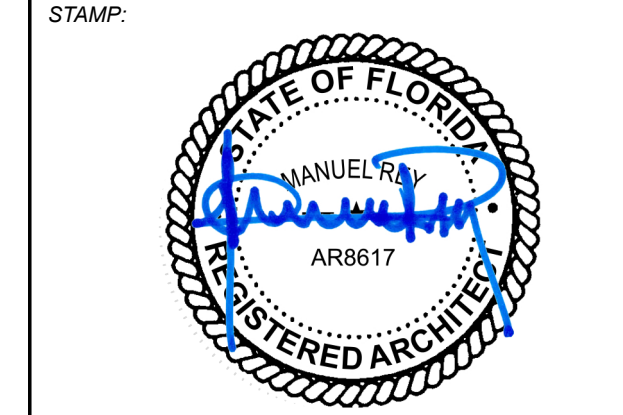
SHEET NO. **A0.03.3**
HISTORIC PRESERVATION BOARD



2 MOXY HOTEL LOCATION
SCALE: N.T.S.



1 MOXY HOTEL SITE MAP
SCALE: N.T.S.



MANUEL REY
REGISTERED PROFESSIONAL ARCHITECT
STATE OF FLORIDA LICENSE NO. 8617
A-442003757 B-262001942



SALADINO DESIGN STUDIOS
7265 NE 4ND AVE, SUITE 101
MIAMI FL 33138
786.953.7455
WWW.SALADINODESIGN.COM

PROJECT:
MOXY HOTEL
915 WASHINGTON AVE
MIAMI BEACH, FL 33139

OWNER:
LIGHTSTONE
480 PARK AVENUE
NEW YORK, NY 10022

M.E.P.:
ARPE ENGINEERING
2020 PONCE DE LEON BLVD, SUITE 1002
CORAL GABLES, FL 33134
PH: 305.444.9809

STRUCTURAL:
YHCE ENGINEERING
99 NW 27TH AVE
MIAMI, FL 33125
PH: 305.969.9423

MTCI / PRIVATE PROVIDER:

GENERAL NOTES:
ALL LEGAL RIGHTS, INCLUDING BUT NOT LIMITED TO, COPYRIGHT AND DESIGN PATENT RIGHTS IN THE DESIGN, ARRANGEMENTS, AND PLANS SHOWN ON THIS DOCUMENT ARE THE PROPERTY OF SALADINO DESIGN STUDIOS, INC. AND WERE DEVELOPED FOR USE SOLELY ON THIS PROJECT. THEY MAY NOT BE USED OR REPRODUCED IN WHOLE OR IN PART, EXCEPT IN CONNECTION WITH THIS PROJECT, WITHOUT THE PRIOR WRITTEN CONSENT OF S.D.S. INC.

REVISIONS		
ISSUE	ISSUE DATE/FOR	

PROJECT NO.: 1915 **DRAWN BY:** CAPU
SCALE: **CHECKED BY:** SS
DATE:

DRAWING:
ENLARGED
MAP LOCATIONS

SHEET NO.
A0.04
HISTORIC PRESERVATION BOARD