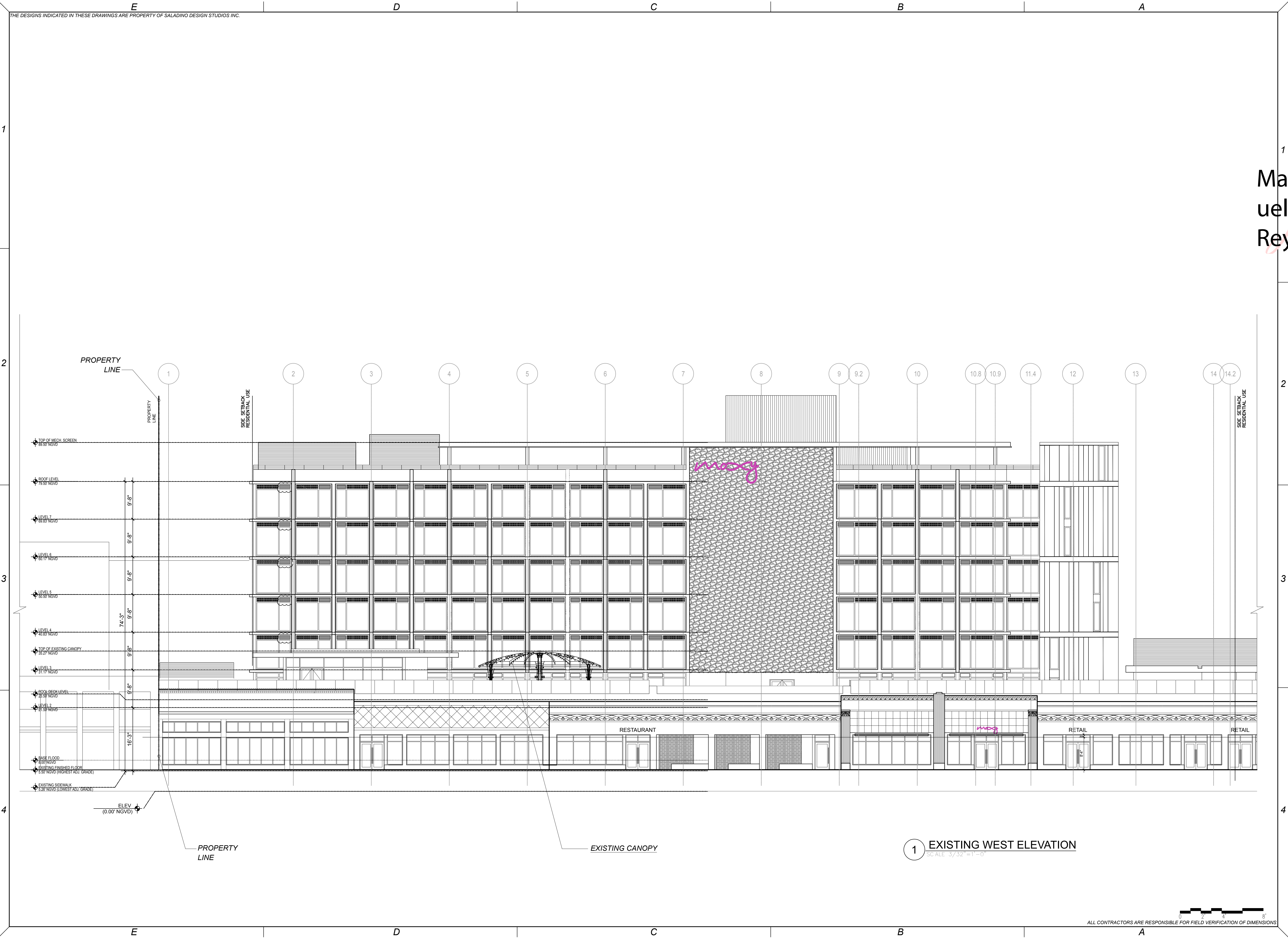


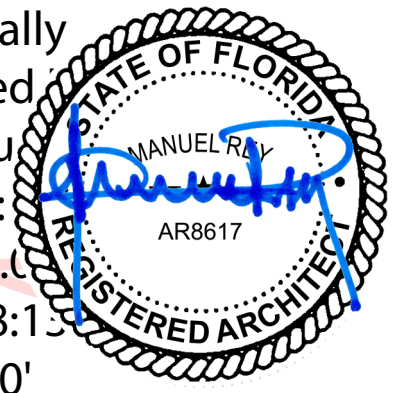
THE DESIGNS INDICATED IN THESE DRAWINGS ARE PROPERTY OF SALADINO DESIGN STUDIOS INC.



1 EXISTING WEST ELEVATION
SCALE: 3/32"=1'-0"

Manuel Rey

STAMP
Digitally signed
Manuel Rey
Date: 2021.05.14:18:13
-04'00'



MANUEL REY
REGISTERED PROFESSIONAL ARCHITECT
STATE OF FLORIDA LICENSE NO. 8617
A-442003757 18F0001942



7265 NE 4TH AVE, SUITE 101
MIAMI FL 33138
786.953.7455
WWW.SALADINODESIGN.COM

PROJECT:
MOXY HOTEL
915 WASHINGTON AVE
MIAMI BEACH, FL 33139

OWNER:
LIGHTSTONE
480 PARK AVENUE
NEW YORK, NY 10022

M.E.P.:
ARPE ENGINEERING
2020 PONCE DE LEON BLVD, SUITE 1002
CORAL GABLES, FL 33134
PH: 305.444.9809

STRUCTURAL:
YHCE ENGINEERING
99 NW 27TH AVE
MIAMI, FL 33125
PH: 305.969.9423

MTC1 / PRIVATE PROVIDER:

GENERAL NOTES:
ALL LEGAL RIGHTS, INCLUDING BUT NOT LIMITED TO, COPYRIGHT AND DESIGN PATENT RIGHTS IN THE DESIGN, ARRANGEMENTS, AND PLANS SHOWN ON THIS DOCUMENT ARE THE PROPERTY OF SALADINO DESIGN STUDIOS, INC., AND WERE DEVELOPED FOR USE SOLELY ON THIS PROJECT. THEY MAY NOT BE USED OR REUSED IN WHOLE OR IN PART, EXCEPT IN CONNECTION WITH THIS PROJECT, WITHOUT THE PRIOR WRITTEN CONSENT OF SDS, INC.

REVISIONS

ISSUE	ISSUE DATE/FOR

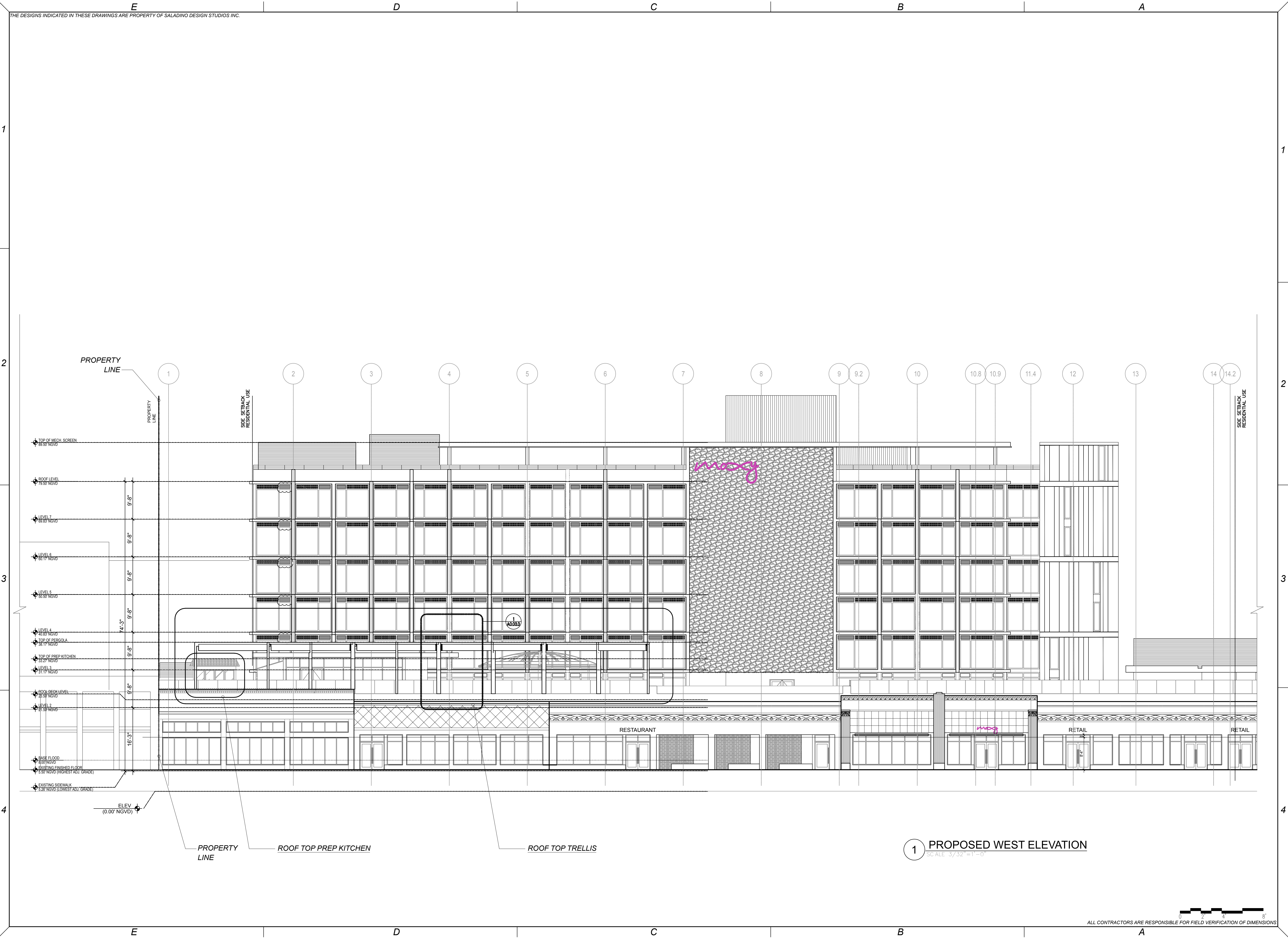
PROJECT NO: 1915 DRAWN BY: CAPU
SCALE: CHECKED BY: SS
DATE:

DRAWING:
EXISTING WEST ELEVATION

SHEET NO. **A0.03.1**
HISTORIC PRESERVATION BOARD

ALL CONTRACTORS ARE RESPONSIBLE FOR FIELD VERIFICATION OF DIMENSIONS

THE DESIGNS INDICATED IN THESE DRAWINGS ARE PROPERTY OF SALADINO DESIGN STUDIOS INC.



1 PROPOSED WEST ELEVATION
SCALE: 3/32"=1'-0"

STAMP:

MANUEL REY
REGISTERED PROFESSIONAL ARCHITECT
STATE OF FLORIDA LICENSE NO. 8817
A-442003757 (B)20011942

SALADINO DESIGN STUDIOS
7265 NE 4TH AVE, SUITE 101
MIAMI, FL 33138
786.953.7455
WWW.SALADINODESIGN.COM

PROJECT:
MOXY HOTEL
915 WASHINGTON AVE
MIAMI BEACH, FL 33139

OWNER:
LIGHTSTONE
480 PARK AVENUE
NEW YORK, NY 10022

M.E.P.:
ARPE ENGINEERING
2020 PONCE DE LEON BLVD, SUITE 1002
CORAL GABLES, FL 33134
PH: 305.444.9809

STRUCTURAL:
YHCE ENGINEERING
99 NW 27TH AVE
MIAMI, FL 33125
PH: 305.969.9423

MTCI / PRIVATE PROVIDER:

GENERAL NOTES:
ALL LEGAL RIGHTS, INCLUDING BUT NOT LIMITED TO, COPYRIGHT AND DESIGN PATENT RIGHTS IN THE DESIGN, ARRANGEMENTS, AND PLANS SHOWN ON THIS DOCUMENT ARE THE PROPERTY OF SALADINO DESIGN STUDIOS INC., AND WERE DEVELOPED FOR USE SOLELY ON THIS PROJECT. THEY MAY NOT BE USED OR REPRODUCED IN WHOLE OR IN PART, EXCEPT IN CONNECTION WITH THIS PROJECT, WITHOUT THE PRIOR WRITTEN CONSENT OF SSS, INC.

REVISIONS

ISSUE	ISSUE DATE/FOR

PROJECT NO: 1915 DRAWN BY: CAPU
SCALE: CHECKED BY: SS
DATE:
DRAWING:

PROPOSED WEST ELEVATION

SHEET NO. **A0.03.2**
HISTORIC PRESERVATION BOARD

ALL CONTRACTORS ARE RESPONSIBLE FOR FIELD VERIFICATION OF DIMENSIONS