

RENDERING 7

VIEW 6 ILLUSTRATES THE HOTEL SPA TERRACE.

7140 COLLINS HOTEL
7140 COLLINS AVENUE | MIAMI BEACH, FLORIDA 33141

TREES & PLANTING TO BE PRESERVED NOTES

1. EXISTING TREES TO BE PRESERVED SHALL BEAR SAME RELATIONSHIP TO FINISHED GRADE AS THEY BEAR TO PRE-CONSTRUCTION GRADE.
2. EXISTING TREES TO BE PRESERVED SHALL BE PROTECTED WITH STURDY, WEATHERPROOF FENCING AT A MINIMUM FOUR (4) FEET HEIGHT INSTALLED NO CLOSER TO THE TREE TRUNK THAN ITS DRIPLINE. THIS FENCE SHALL BE MAINTAINED IN WORKING ORDER DURING ALL PHASES OF CONSTRUCTION. MAINTAIN TREE PROTECTION ZONES FREE OF WEEDS AND TRASH.
3. NO WORK SHALL BE CONDUCTED WITHIN THE DRIPLINE, UNLESS REVIEWED AND APPROVED BY THE LANDSCAPE ARCHITECT. ALL WORK APPROVED WITHIN THE DRIPLINE SHALL BE COMPLETED BY HAND. PROTECT ROOT SYSTEMS FROM PONDING, ERODING, OR EXCESSIVE WETTING.
4. THE PROJECT LIMIT OF CONSTRUCTION AND ALL EXISTING VEGETATION TO REMAIN IS TO BE CLEARLY DEFINED BY STURDY, WEATHERPROOF FENCING AT A MINIMUM OF FOUR (4) FEET HIGH.

TREES & PLANTING TO BE RELOCATED NOTES

1. THE CONTRACTOR IS TO ROOT PRUNE ALL PLANT MATERIAL 90 DAYS MINIMUM IN ADVANCE OF MOVING PLANT MATERIAL.
2. THE CONTRACTOR IS TO WARRANTY ALL RELOCATED PLANT MATERIAL.
3. THE CONTRACTOR IS RESPONSIBLE FOR THE WATERING AND FERTILIZING OF ALL PLANT RELOCATED PLANT MATERIAL UNTIL PROJECT COMPLETION.
4. ALL RELOCATED PLANT MATERIAL IS TO BE APPROPRIATELY BRACED.
5. CONTRACTOR TO NOTIFY LANDSCAPE ARCHITECT TWO WEEKS IN ADVANCE OF ALL SCHEDULED WORK PERTAINING TO THE RELOCATION OF SITE TREES.

TREES & PLANTING TO BE REMOVED NOTES

1. THE CONTRACTOR IS TO COMPLETELY REMOVE ALL PLANTER MATERIAL DESIGNATED FOR REMOVAL (I.E. ROOT BALL, DEBRIS, SAW DUST, ETC.).
2. THE CONTRACTOR IS TO BACKFILL ALL EXCAVATED ROOT BALLS FLUSH TO THE ADJACENT ELEVATION LEVEL.
3. CONTRACTOR TO NOTIFY LANDSCAPE ARCHITECT TWO WEEKS IN ADVANCE OF ALL SCHEDULED WORK PERTAINING TO THE RELOCATION OF SITE TREES.

MITIGATION NOTES

1. THERE IS A TOTAL 976 SQUARE FEET OF CANOPY AREA PROPOSED FOR REMOVAL.
2. AS A RESULT, **FOUR TREES** ARE TO BE PLANTED ON-SITE TO MEET CITY OF MIAMI BEACH MITIGATION REQUIREMENTS.

2.1. THE FOUR TREES ARE TO BE **CATEGORY 1 TREES (12 FEET IN HEIGHT OF GREATER)**

2.2. **TWO** DIFFERENT SPECIES ARE TO BE USED FOR THE MITIGATION PLANTINGS.

2.3. FIFTY PERCENT OF THE TREES ARE TO BE NATIVE TO MIAMI-DADE COUNTY. AS A RESULT, A MINIMUM OF **TWO NATIVE TREES** ARE TO BE PLANTED.

TREE DISPOSITION SCHEDULE

| # | BOTANICAL NAME | COMMON NAME | DBH. | HT. | SPREAD | ACTION | NOTES |
|----|------------------------|-------------------|------|-----|--------|--------|--|
| 1 | ROYSTONEA REGIA | ROYAL PALM | 24" | 30' | 16' | REMOVE | PLANT CONFLICTS WITH CONSTRUCTION ENVELOPE |
| 2 | ROYSTONEA REGIA | ROYAL PALM | 24" | 30' | 16' | REMOVE | PLANT CONFLICTS WITH CONSTRUCTION ENVELOPE |
| 3 | ROYSTONEA REGIA | ROYAL PALM | 24" | 30' | 16' | REMOVE | PLANT CONFLICTS WITH CONSTRUCTION ENVELOPE |
| 4 | ROYSTONEA REGIA | ROYAL PALM | 24" | 30' | 16' | REMOVE | PLANT CONFLICTS WITH CONSTRUCTION ENVELOPE |
| 5 | COCOLOBA DIVERSIFOLIA | PIGEON PLUM | 4" | 12' | 5' | REMOVE | PLANT CONFLICTS WITH CONSTRUCTION ENVELOPE |
| 6 | COCOLOBA DIVERSIFOLIA | PIGEON PLUM | 4" | 12' | 5' | REMOVE | PLANT CONFLICTS WITH CONSTRUCTION ENVELOPE |
| 7 | COCOLOBA DIVERSIFOLIA | PIGEON PLUM | 4" | 12' | 5' | REMOVE | PLANT CONFLICTS WITH CONSTRUCTION ENVELOPE |
| 8 | CONOCARPUS ERECTUS 'S' | SILVER BUTTONWOOD | 6" | 12' | 6' | REMOVE | PLANT CONFLICTS WITH CONSTRUCTION ENVELOPE |
| 9 | CONOCARPUS ERECTUS 'S' | SILVER BUTTONWOOD | 6" | 12' | 6' | REMOVE | PLANT CONFLICTS WITH CONSTRUCTION ENVELOPE |
| 10 | CONOCARPUS ERECTUS 'S' | SILVER BUTTONWOOD | 6" | 12' | 6' | REMOVE | PLANT CONFLICTS WITH CONSTRUCTION ENVELOPE |
| 11 | CONOCARPUS ERECTUS 'S' | SILVER BUTTONWOOD | 6" | 12' | 6' | REMOVE | PLANT CONFLICTS WITH CONSTRUCTION ENVELOPE |

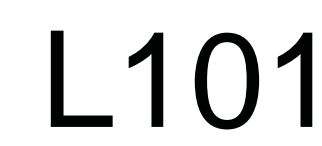


7140 COLLINS AVENUE | MIAMI BEACH, FLORIDA 33141

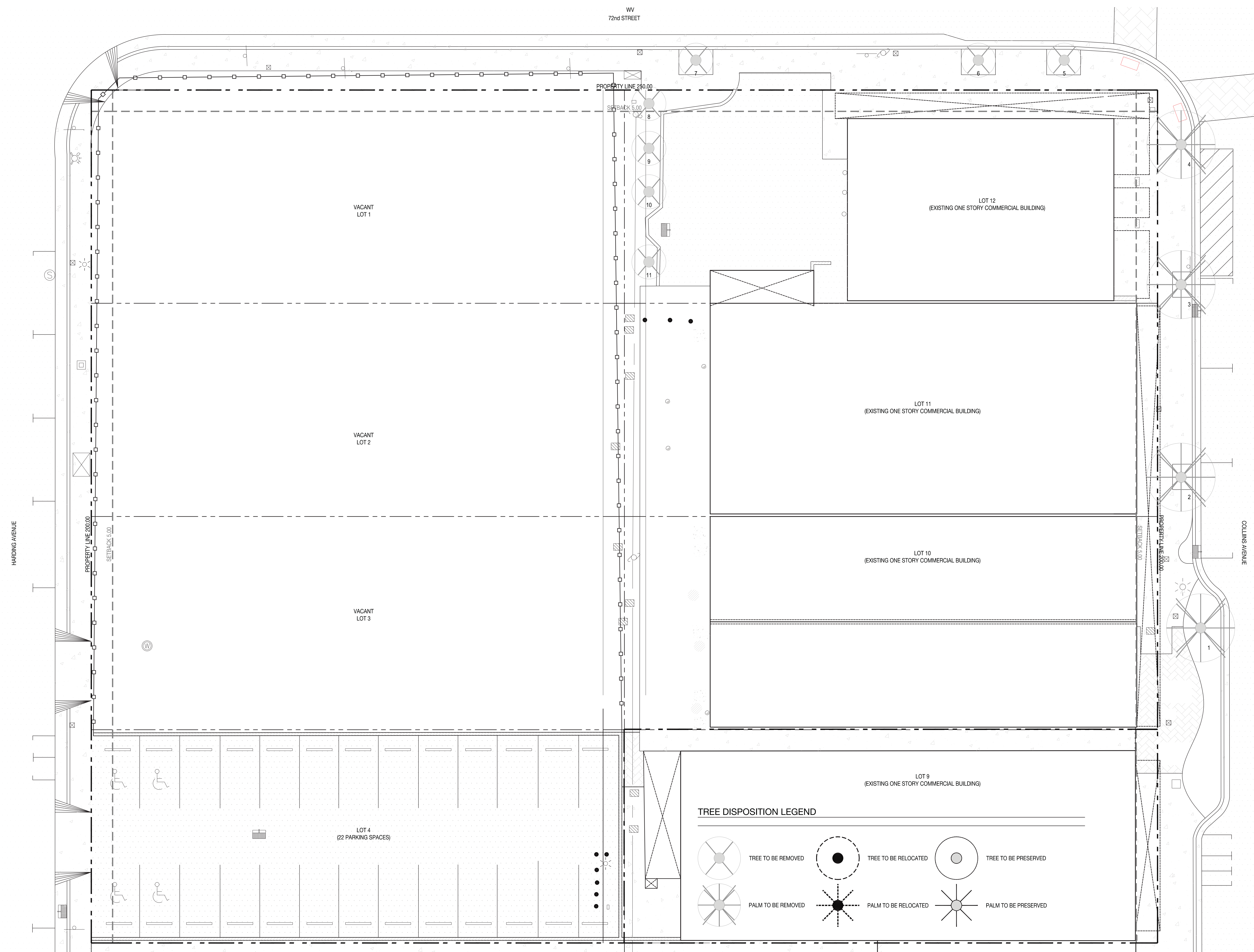
NOT FOR CONSTRUCTION



| DATE | ISSUE |
|------------|-----------------|
| 10.17.2016 | PLANNING BOARD |
| 10.28.2016 | M. BEACH DRB |
| 11.02.2016 | M. BEACH REVIEW |



© COPYRIGHT NIELSEN LANDSCAPE ARCHITECTS, LLC



RETI
9537 HARDING AVENUE
SURFSIDE, FL 33154
305.867.6344

WWW.RETIMIAMI.COM

REVUELTA INTERNATIONAL
2950 SW 27TH STREET, 110
MIAMI, FL 33133
305.590.5000

WWW.REVUELTA-ARCHITECTURE.COM

CLARO DEVELOPMENT
1035 N MIAMI AVENUE, 201
MIAMI, FL 33136
305.324.4700

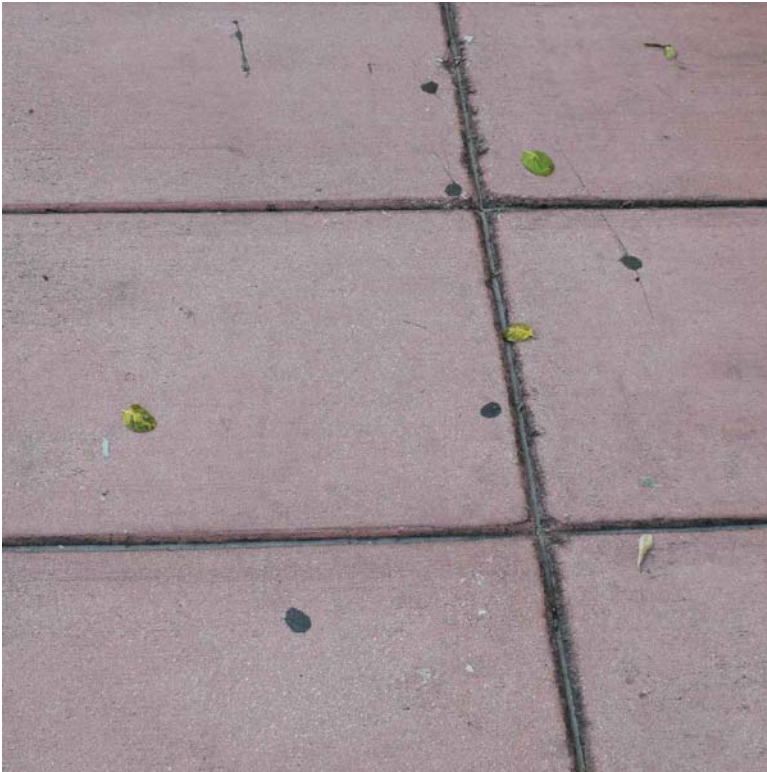
WWW.CLAROCORP.COM

OCEAN ENGINEERING, INC.
333 NE 24TH STREET, 408
MIAMI, FL 33137
786.253.5252

WWW.OCEANENGINEERINGINC.COM

MATERIALS NOTES

- CONTRACTOR TO VERIFY ALL QUANTITIES. IN CASE OF ANY DISCREPANCIES, GRAPHICALLY SHOWN MATERIAL QUANTITIES SHALL TAKE PRECEDENCE.
- ALL CONSTRUCTION AND MATERIALS NOT SPECIFICALLY ADDRESSED IN THE CONTRACT DOCUMENTS OR SPECIFICATIONS SHALL BE IN ACCORDANCE WITH LOCAL, STATE AND FEDERAL JURISDICTIONS AND GOVERNING BODIES/AGENCIES STANDARDS.
- THE CONTRACTOR SHALL PROVIDE A FULL-SCALE MOCKUP AND RECEIVE APPROVAL FROM THE LANDSCAPE ARCHITECT FOR ALL SYSTEMS BEFORE BEGINNING CONSTRUCTION OF PAVEMENT.
- EXPANSION JOINTS SHALL BE PROVIDED WHERE FLATWORK MEETS VERTICAL STRUCTURES, SUCH AS WALLS, CURBS, STEPS, AND OTHER HARDSCAPE ELEMENTS. EXPANSION JOINTS SHALL ALSO BE PROVIDED AT MATERIAL CHANGES. EXPANSION JOINT MATERIALS/METHODS SHALL BE SUBMITTED TO THE LANDSCAPE ARCHITECT FOR REVIEW AND APPROVAL PRIOR TO INSTALLATION.
- CONTROL JOINTS SHOULD BE SPACED NO GREATER THAN TEN (10) LINEAR FEET MAXIMUM, UNLESS OTHERWISE SPECIFIED. EXPANSION JOINTS SHOULD BE SPACED NO GREATER THAN FORTY (40) LINEAR FEET MAXIMUM, UNLESS OTHERWISE SPECIFIED. CONTRACTOR SHALL ADVISE ON OTHER JOINTS AS NEEDED TO MINIMIZE CRACKING. THIS INFORMATION SHALL BE SUBMITTED TO THE LANDSCAPE ARCHITECT FOR REVIEW AND APPROVAL PRIOR TO INSTALLATION.
- CONTROL JOINTS SHALL BE PROVIDED AS SPECIFIED IN THE CONTRACT DOCUMENTS. CONTROL JOINT MATERIALS, METHODS AND RECOMMENDATIONS ON ADDITIONAL CONTROL JOINTS TO MINIMIZE CRACKING SHALL BE SUBMITTED TO THE LANDSCAPE ARCHITECT FOR REVIEW AND APPROVAL.
- ALL STEPS SHALL HAVE TWELVE (12) INCH TREADS AND SIX (6) INCH RISERS, UNLESS OTHERWISE SPECIFIED.
- HOLD TOP OF WALLS AND FENCES LEVEL, UNLESS OTHERWISE SPECIFIED.
- CONTRACTOR SHALL NOT INSTALL WORK LOCATED ON TOP OF ARCHITECTURAL STRUCTURES WITHOUT FIRST REVIEWING ARCHITECTURAL DRAWINGS.
- SAMPLES OF SPECIFIED MATERIALS SHALL BE SUBMITTED TO THE LANDSCAPE ARCHITECT FOR REVIEW AND APPROVAL PRIOR TO ORDERING FOR JOB.



CONCRETE

COLOR: MB PINK
FINISH: BRUSH W/ TOOL JT.
DIMENSIONS: NA
SOURCE: TBD



RIVER ROCK

COLOR: WHITE
FINISH: NA
DIMENSIONS: NA
SOURCE: YARDCO



PEDRA PORTUGUESA

COLOR: ROSE
FINISH: SNAPPED
DIMENSIONS: NA
SOURCE: SUTTON BRICK & STONE



WESTERN RED CEDAR

COLOR: NA
FINISH: ROUGH
DIMENSIONS: TBD
SOURCE: TBD



PEDRA PORTUGUESA

COLOR: WHITE
FINISH: SNAPPED
DIMENSIONS: NA
SOURCE: SUTTON BRICK & STONE



GLASS TILE MOSAIC

COLOR: TBD
FINISH: TBD
DIMENSIONS: TBD
SOURCE: TBD



PLANK PAVERS

COLOR: GREY
FINISH: TBD
DIMENSIONS: 6 IN. X 18 IN.
SOURCE: HANOVER PAVERS

7140 COLLINS HOTEL

7140 COLLINS AVENUE | MIAMI BEACH, FLORIDA 33141

S. TYLER NIELSEN - LA6667067

NOT FOR CONSTRUCTION

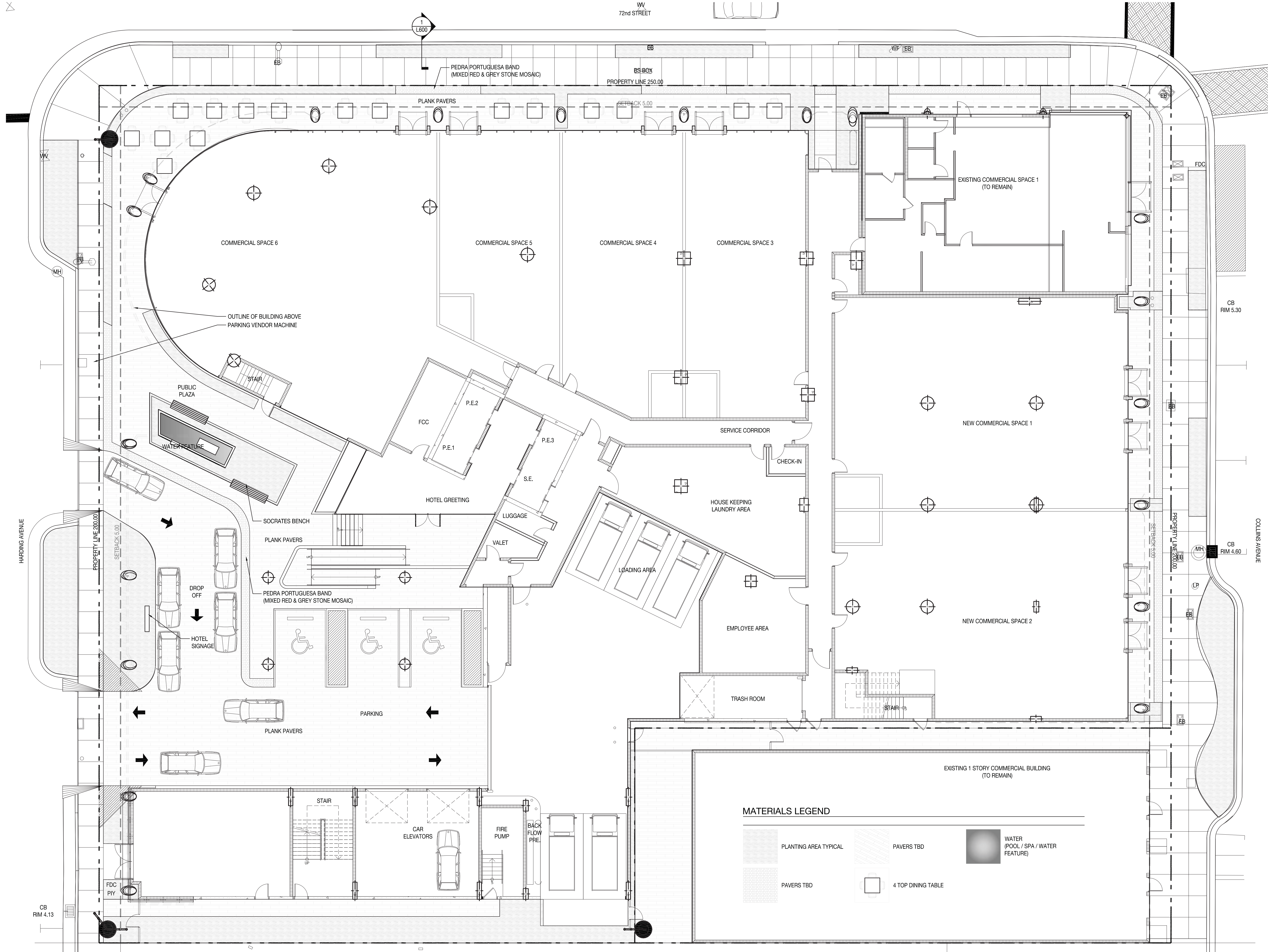


DATE ISSUE

10.17.2016 PLANNING BOARD
10.28.2016 M. BEACH DRB
11.02.2016 M. BEACH REVIEW

L300

3



NIELSEN
landscape architects
1016 clare avenue, 5
west palm beach, fl
561.402.9414
www.nielsenlandarch.com

RETI
9537 HARDING AVENUE
SURFSIDE, FL 33154
305.867.6344
WWW.RETIMIAMI.COM

REVUELTA INTERNATIONAL
2950 SW 27TH STREET, 110
MIAMI, FL 33133
305.590.5000
WWW.REVUELTA-ARCHITECTURE.COM

CLARO DEVELOPMENT
1035 N MIAMI AVENUE, 201
MIAMI, FL 33136
305.324.4700
WWW.CLAROCORP.COM

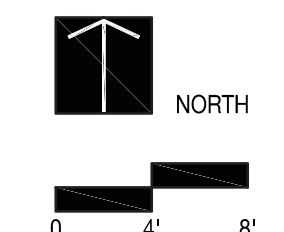
OCEAN ENGINEERING, INC.
333 NE 24TH STREET, 408
MIAMI, FL 33137
786.253.5252
WWW.OCEANENGINEERINGINC.COM

7140 COLLINS HOTEL

S. TYLER NIELSEN - LA6667067
NOT FOR CONSTRUCTION

REGISTERED LANDSCAPE ARCHITECT
S. TYLER NIELSEN
FLA 6667067
STATE OF FLORIDA

| DATE | ISSUE |
|------------|-----------------|
| 10.17.2016 | PLANNING BOARD |
| 10.28.2016 | M. BEACH DRB |
| 11.02.2016 | M. BEACH REVIEW |



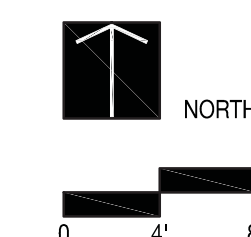
L301

7140 COLLINS HOTEL

NOT FOR CONSTRUCTION

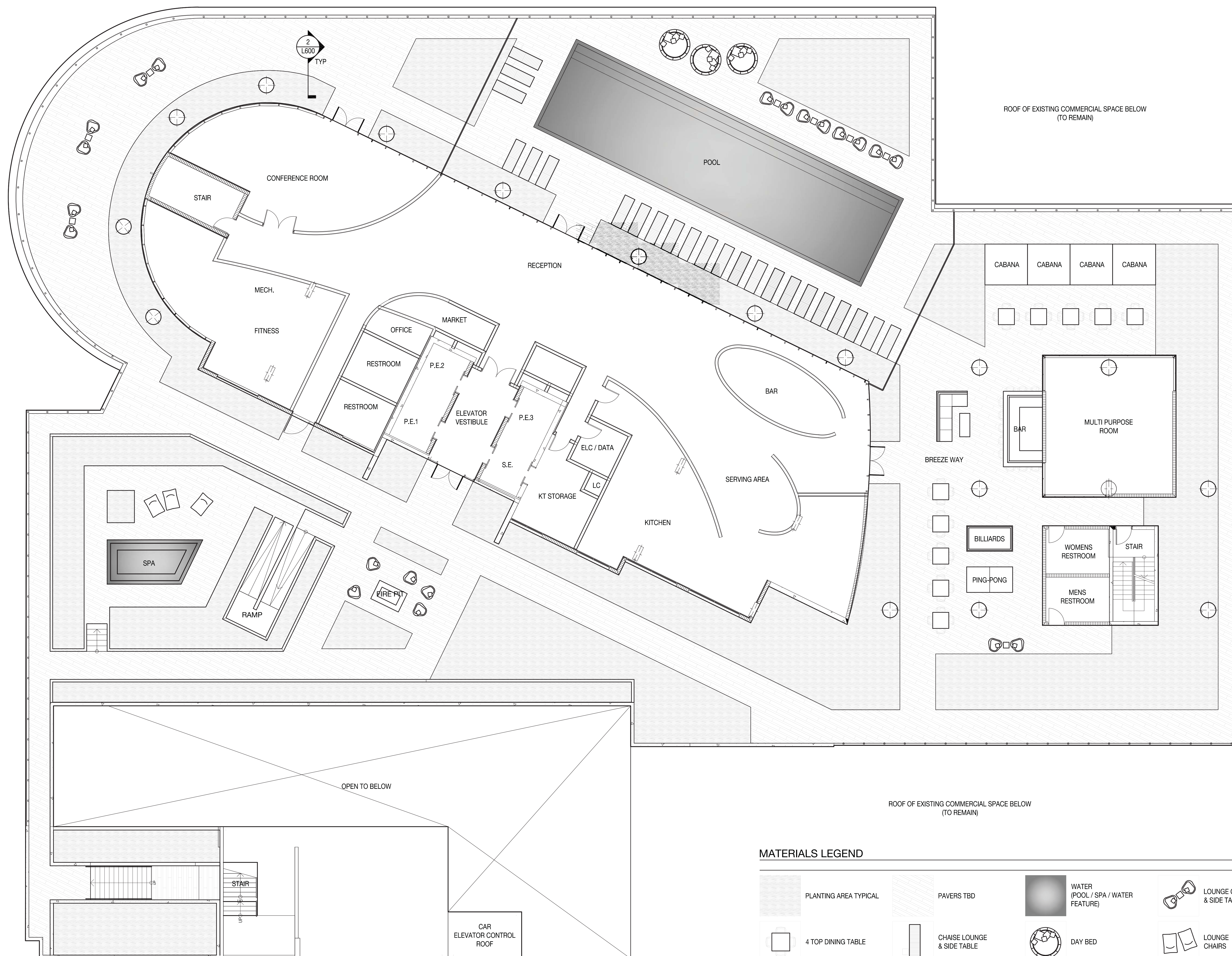


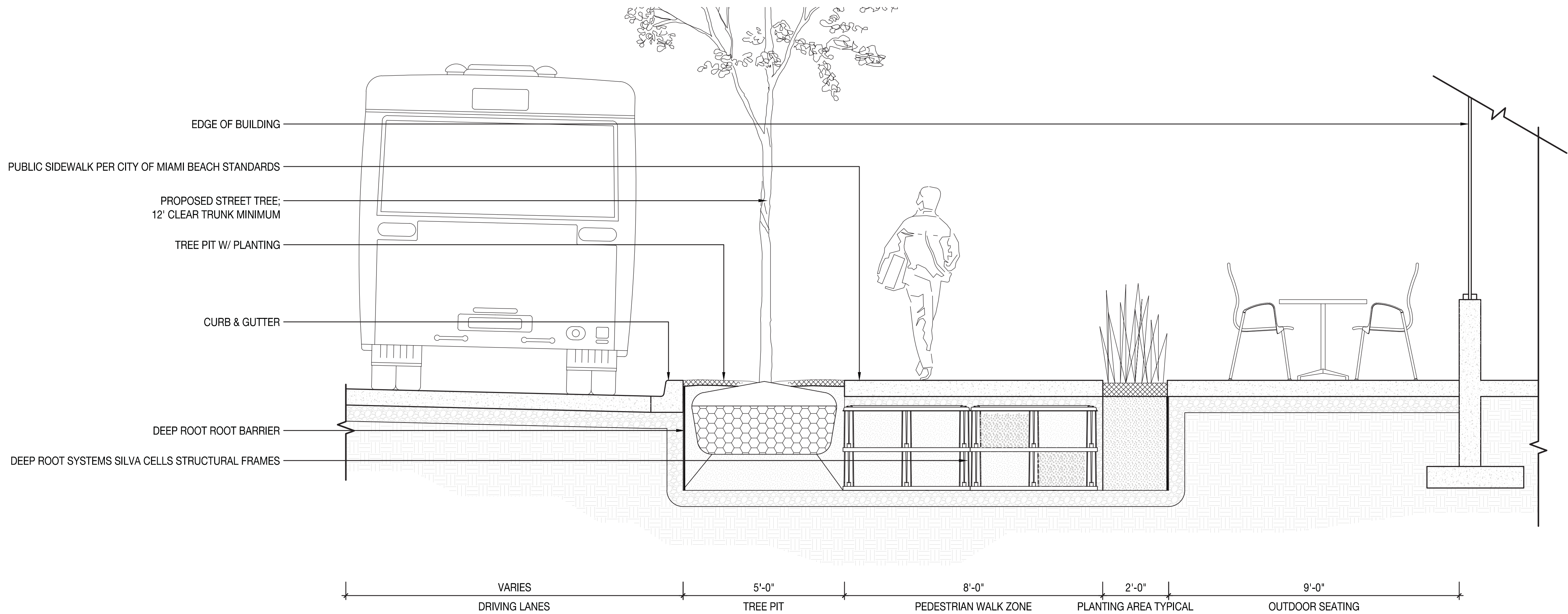
| DATE | ISSUE |
|------------|-----------------|
| 10.17.2016 | PLANNING BOARD |
| 10.28.2016 | M. BEACH DRB |
| 11.02.2016 | M. BEACH REVIEW |



L302

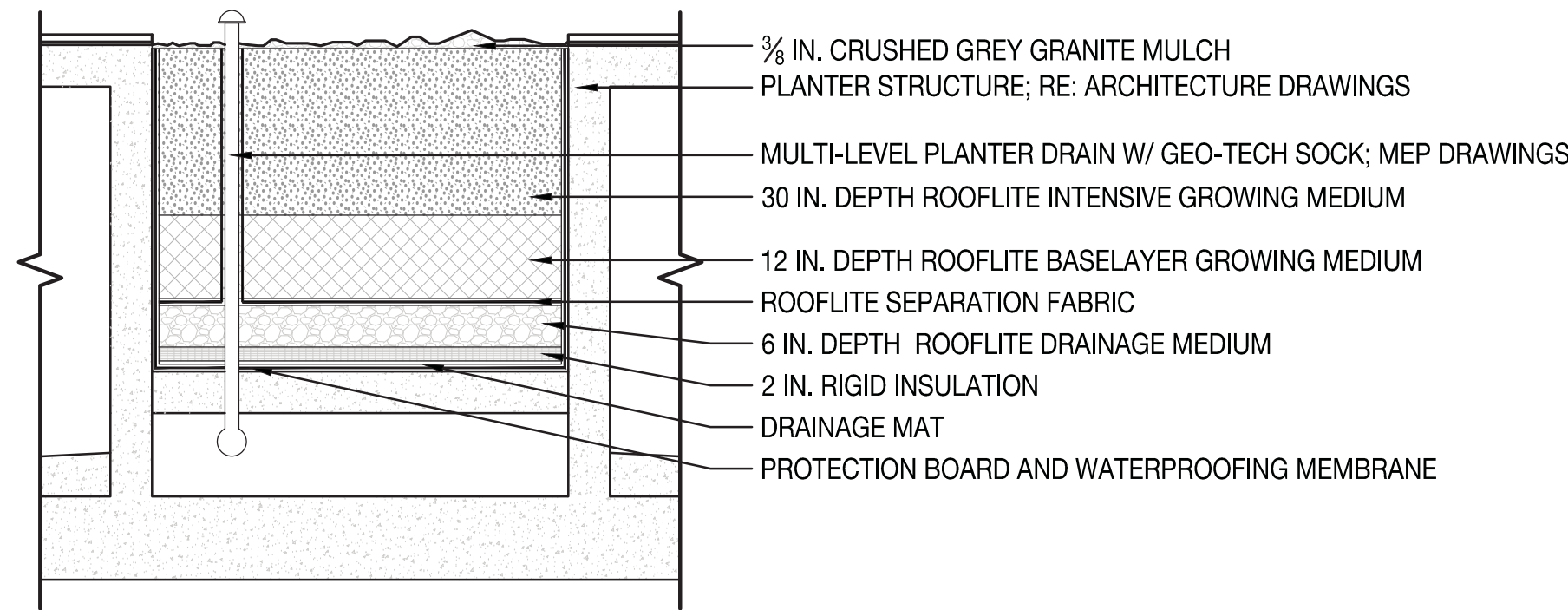
© COPYRIGHT NIELSEN LANDSCAPE ARCHITECTS, LLC





1 PROPOSED R.O.W. SIDEWALK & LANDSCAPE IMPROVEMENTS

Scale: 1/2" = 1'-0



2 TERRACE PLANTER DETAIL TYPICAL

Scale: 1/2" = 1'-0

PLANTING NOTES

- PLANT MATERIAL IS TO BE HEALTHY SPECIMENS FREE FROM DISEASE OR DAMAGE, AND IS TO BE MAINTAINED IN EXCELLENT CONDITION WHILE ON THE JOBSITE. LANDSCAPE ARCHITECT SHALL INSPECT PLANT MATERIAL UPON ARRIVAL TO JOBSITE AND WILL REJECT PLANT MATERIAL THAT DOES NOT MEET THE STANDARDS DESCRIBED WITHIN THE CONTRACT DOCUMENTS.
- THE LANDSCAPE ARCHITECT WILL PERIODICALLY INSPECT PLANT MATERIAL STOCKPILED AND/OR PLANTED ON SITE DURING THE COURSE OF CONSTRUCTION. PLANT MATERIAL NOT MEETING THE STANDARDS CONTAINED WITHIN CONTRACT DOCUMENTS SHALL BE REPLACED AT NO COST TO THE OWNER.
- PROVIDE MATCHING SIZES AND FORMS FOR EACH PLANT OF THE SAME SPECIES UNLESS OTHERWISE INDICATED.
- CONTRACTOR TO VERIFY ALL QUANTITIES. IN CASE OF DISCREPANCIES, GRAPHICALLY SHOWN QUANTITIES SHALL TAKE PRECEDENCE.
- ALL MATERIALS USED SHALL CONFORM TO THE GUIDELINES ESTABLISHED BY THE CURRENT AMERICAN STANDARDS FOR NURSERY STOCK, PUBLISHED BY THE AMERICAN ASSOCIATION OF NURSERYMEN.
- ALL PLANT MATERIAL SHALL BE INSTALLED PLUMB AND PER THE SPECIFICATIONS CONTAINED WITHIN THE CONTRACT DOCUMENTS. ANY NECESSARY STAKING AND/OR OTHER SUPPORTS MATERIALS/METHODS SHALL BE SUBMITTED TO THE LANDSCAPE ARCHITECT FOR REVIEW AND APPROVAL PRIOR TO INSTALLATION.
- THE CONTRACTOR SHALL PRUNE EXISTING AND/OR NEW TREES ONLY PER LANDSCAPE ARCHITECT DIRECTION.
- THE CONTRACTOR SHALL STAKE THE LOCATIONS OF ALL TREES AND B&B SHRUBS FOR LANDSCAPE ARCHITECT REVIEW AND APPROVAL, PRIOR TO INSTALLATION.
- ALL ROOT-WRAPPING MATERIALS THAT ARE NOT BIO-DEGRADABLE SHALL BE REMOVED FROM THE ROOT BALL. ROOT BALLS SHALL BE FREE OF WEEDS.
- SPECIFIED PLANT MATERIAL SIZES SHALL BE CONSIDERED MINIMUM SIZES.
- FINISH GRADE OF PLANTING BEDS SHALL BE ONE (1) INCH BELOW ADJACENT FLATWORK, UNLESS SPECIFIED OTHERWISE.
- MULCH OR PLANTING BED DRESSING SHALL BE PLACED IN ALL PLANTING AREAS AS SPECIFIED. MULCH OR PLANTING BED DRESSING SHALL NOT BE PLACED WITHIN SIX (6) INCHES OF TREE TRUNKS. MULCHING SHOULD BE REPEATED ANNUALLY DURING THE AUTUMN TO A THREE (3) INCH DEPTH.
- ALL PLANT MATERIAL SHOULD RECEIVE AN ORGANIC FERTILIZER IN LIMITED APPLICATION FOLLOWING INSTALLATION. TYPE AND APPLICATION RATE AND METHOD OF APPLICATION TO BE SPECIFIED BY THE CONTRACTOR AND APPROVED BY THE LANDSCAPE ARCHITECT.
- EXCESS FERTILIZER SHALL BE DISPOSED OF PROPERLY OFF-SITE. IT SHALL NOT BE DISPOSED OF IN STORM DRAINS AND/OR DRYWELLS.
- STOCKPILED PLANT MATERIAL TO BE PLACED IN THE SHADE AND PROPERLY HAND-WATERED UNTIL PLANTED.
- MINI-NUGGET TYPE DECORATIVE BARK MULCH WILL BE USED TO RETURN NUTRIENTS TO THE SOIL, REDUCE MAINTENANCE AND MINIMIZE EVAPORATION FOR AREAS APPROXIMATE TO THE RESIDENCE. LARGER SHREDDED BARK MULCH WILL BE USED FOR STEEP AREAS SO SLOUGHING IS LESS LIKELY TO OCCUR.
- PRESERVE & PROTECT ALL EXISTING VEGETATION INDICATED TO REMAIN AT ALL TIMES.
- ALL VEGETATION PROPOSED FOR OUTSIDE THE BUILDING ENVELOPE TO BE NATIVE UNLESS OTHERWISE NOTED. PLANTING THAT OCCURS OUTSIDE THE BUILDING ENVELOPE IS FOR RESTORATION PURPOSES ONLY OR IS SPECIFIC TO UTILITIES RESTORATION.
- SIX (6) INCH PLANT MIX SHALL BE PROVIDED FOR ALL LAWN, TURF, AND NATIVE PLANTING ZONES. 18 INCH PLANT MIX SHALL BE PROVIDED FOR ALL PERENNIAL PLANTING BEDS UNLESS OTHERWISE NOTED.

PLANTING SCHEDULE GROUND LEVEL

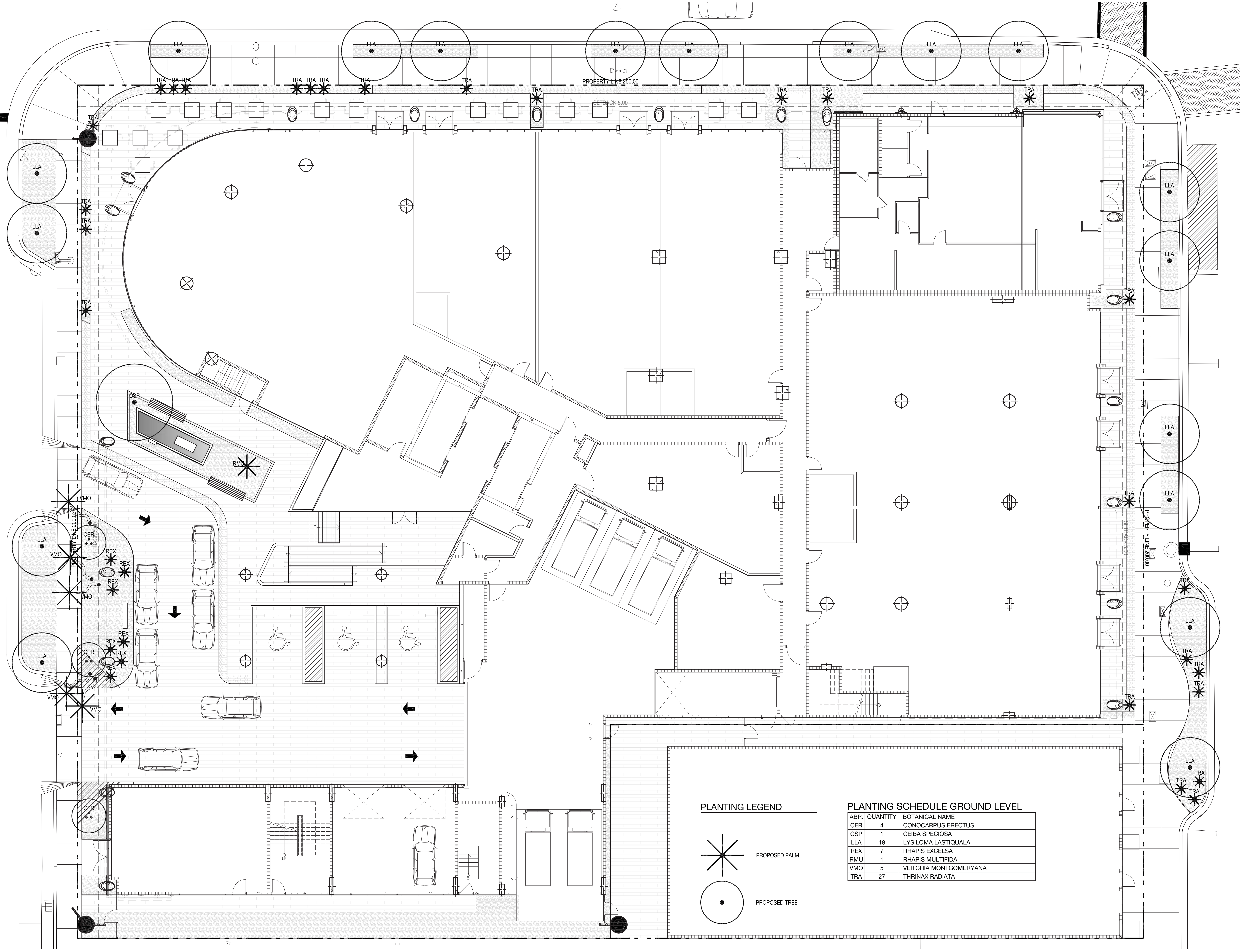
| ABR. | QUANTITY | BOTANICAL NAME | COMMON NAME | SPECIFICATIONS |
|--|----------|--------------------------|--------------------------|-------------------------------|
| TREES | | | | |
| CER | 4 | CONOCARPUS ERECTUS | GREEN BUTTONWOOD | FG. 12' - 14' HT. MULTI-TRUNK |
| CSP | 1 | CEIBA SPECIOSA | FLOSS SILK TREE | FG. 20' HT. OA |
| LLA | 18 | LYSILOMA LASTIQUALA | WILD TAMARIND | FG. 14' - 16' HT. OA |
| PALMS | | | | |
| REX | 7 | RHAPIS EXCELSA | LADY PALM | 7 GAL. 3' - 4' |
| RMU | 1 | RHAPIS MULTIFIDA | FINGER PALM | 25 GAL. 6' HT. OA. CLUMPING |
| VMO | 5 | VEITCHIA MONTGOMERYANA | MONTGOMERY PALM | TRIPLE - 16' - 18' OA |
| TRA | 27 | THRINAX RADIATA | THATCH PALM | 15 GAL. 4' HT. MIN. |
| UNDERSTORY SHRUBS & ACCENTS | | | | |
| RC | 128 | PHILODENDRON ROJO CONGO | SAME | 7 GAL. 3' X 3' |
| AO | 25 | ALCANTEREA ODORATA | SILVER BROMELIAD | 3 GAL. 18" X 18" |
| ZM | 25 | ZAMIA MARITIMA | CARDBOARD PALM | 15 GAL. 3' X 3' |
| GROUNDCOVERS | | | | |
| EL | 1180 | TRIPSACUM FLORIDANUM | DWARF FAKAHATCHEER GRASS | 1 GAL. 18" OC |
| MS | 320 | MICROSORUM SCOLOPENDRIUM | WART FERN | 1 GAL. 12" OC |
| CONTRACTOR TO PROVIDE \$2000 MISCELLANEOUS WHOLESALe PLANT ALLOWANCE. LANDSCAPE ARCHITECT TO TAG PLANTS AT NURSERY | | | | |

PLANTING SCHEDULE AMENITY LEVEL

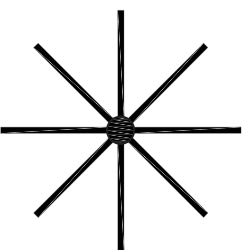
| ABR. | QUANTITY | BOTANICAL NAME | COMMON NAME | SPECIFICATIONS |
|--|----------|----------------------------------|-------------------------|-------------------------------|
| TREES | | | | |
| CER | 9 | CONOCARPUS ERECTUS | GREEN BUTTONWOOD | FG. 12' - 14' HT. MULTI-TRUNK |
| CRO | 4 | CLUSIA ROSEA | AUTOGRAPH TREE | 45 GAL. MULTI-TRUNK |
| CZY | 40 | CALYPTRANTHES ZUZYGIUM | MYRTLE OF THE RIVER | 25 GAL. 8' HT. OA. |
| PALMS | | | | |
| BNO | 1 | BISMARCKIA NOBILIS | BISMARCK PALM | FG. 32' OA |
| TRA | 40 | THRINAX RADIATA | THATCH PALM | 15 GAL. 4' HT. MIN. |
| RMU | 7 | RHAPIS MULTIFIDA | FINGER PALM | 25 GAL. 6' HT. OA. CLUMPING |
| VMO | 25 | VEITCHIA MONTGOMERYANA | MONTGOMERY PALM | TRIPLE - 16' - 18' OA |
| UNDERSTORY SHRUBS & ACCENTS | | | | |
| SMA | 19 | SURIANA MARITIMA | SAME | 25 GAL. 6' HT. MIN. |
| RC | 165 | PHILODENDRON ROJO CONGO | SAME | 7 GAL. 3' X 3' |
| AP | 65 | ALPINIA PURPURATA | WHITE GINGER | 7 GAL. 3' - 4' HT. |
| ZM | 36 | ZAMIA MARITIMA | CARDBOARD PALM | 15 GAL. 3' X 3' |
| JW | 58 | ACALPHYA WILKESIANA 'JAVA WHITE' | SAME | 7 GAL. 3' X 3' |
| GROUNDCOVERS | | | | |
| TD | 1630 | TRIPSACUM DACTYLIODES | DWARF FAKAHATCHEE GRASS | 1 GAL. 18" OC |
| CONTRACTOR TO PROVIDE \$4000 MISCELLANEOUS WHOLESALe PLANT ALLOWANCE. LANDSCAPE ARCHITECT TO TAG PLANTS AT NURSERY | | | | |

X

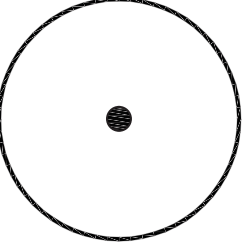
X



PLANTING LEGEND



PROPOSED PALM



PROPOSED TREE

PLANTING SCHEDULE GROUND LEVEL

| ABR. | QUANTITY | BOTANICAL NAME |
|------|----------|------------------------|
| CER | 4 | CONOCARPUS ERECTUS |
| CSP | 1 | CEIBA SPECIOSA |
| LLA | 18 | LYSILOMA LASTIGUALA |
| REX | 7 | RHAPIS EXCELSA |
| RMU | 1 | RHAPIS MULTIFIDA |
| VMO | 5 | VEITCHIA MONTGOMERYANA |
| TRA | 27 | THRINAX RADIATA |

7140 COLLINS HOTEL

7140 COLLINS AVENUE | MIAMI BEACH, FLORIDA 33141

