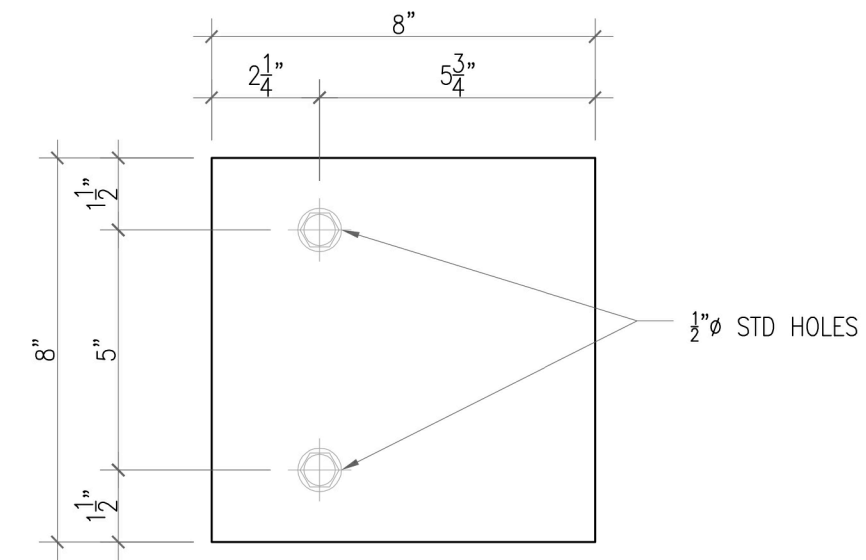


A



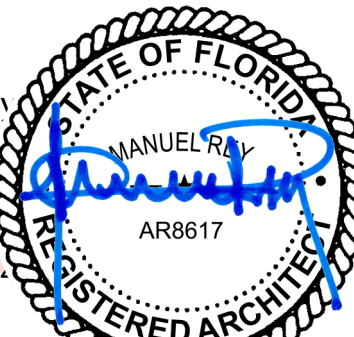
#### 4 BASE PLATE ECCENTRIC CONDITION



ALL CONTRACTORS ARE RESPONSIBLE FOR FIELD VERIFICATION OF DIMENSIONS

**STAMP:**

Digitally  
by Mar  
Date:  
2021.0  
14:19:2



MANUEL REY  
REGISTERED PROFESSIONAL ARCHITECT  
STATE OF FLORIDA LICENSE No. 8617  
AA#26003757 IB#26001842



7265 NE 4ND AVE. SUITE 101  
MIAMI FL 33138  
786.953.7455  
WWW.SALADINODESIGN.COM

## PROJECT

**MOXY HOTEL**  
915 WASHINGTON AVE  
MIAMI BEACH, FL 33139

OWNER

**LIGHTSTONE**  
460 PARK AVENUE  
NEW YORK, N.Y. 10022

M.E.P.:

**ARPE ENGINEERING**  
2020 PONCE DE LEON BLVD. SUITE 100  
CORAL GABLES, FL. 33134  
PH: 305.444.9809

**STRUCTURAL**

**YHCE ENGINEERING**  
99 NW 27TH AVE  
MIAMI, FL 33125  
PH: 305.969.9423

MTCI / PRIVATE PROVIDER:

**GENERAL NOTES:**  
ALL LEGAL RIGHTS, INCLUDING BUT NOT LIMITED TO, COPYRIGHT AND DESIGN PATENT RIGHTS, IN THE DESIGN, ARRANGEMENTS, AND PLANS SHOWN ON THIS DOCUMENT ARE THE PROPERTY OF SALADINO DESIGN STUDIOS INC., AND WERE DEVELOPED FOR USE SOLELY ON THIS PROJECT. THEY MAY NOT BE USED OR REUSED IN WHOLE OR IN PART, EXCEPT IN CONNECTION WITH THIS PROJECT, WITHOUT THE PRIOR WRITTEN CONSENT OF SDS, INC.

## REVISIONS

DRAWING

## SECTION & DETAILS

SHEET NO.

### A0.03.3

HISTORIC PRESERVATION  
BOARD

1

2

3

4

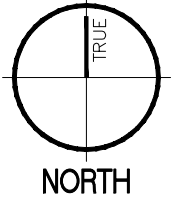
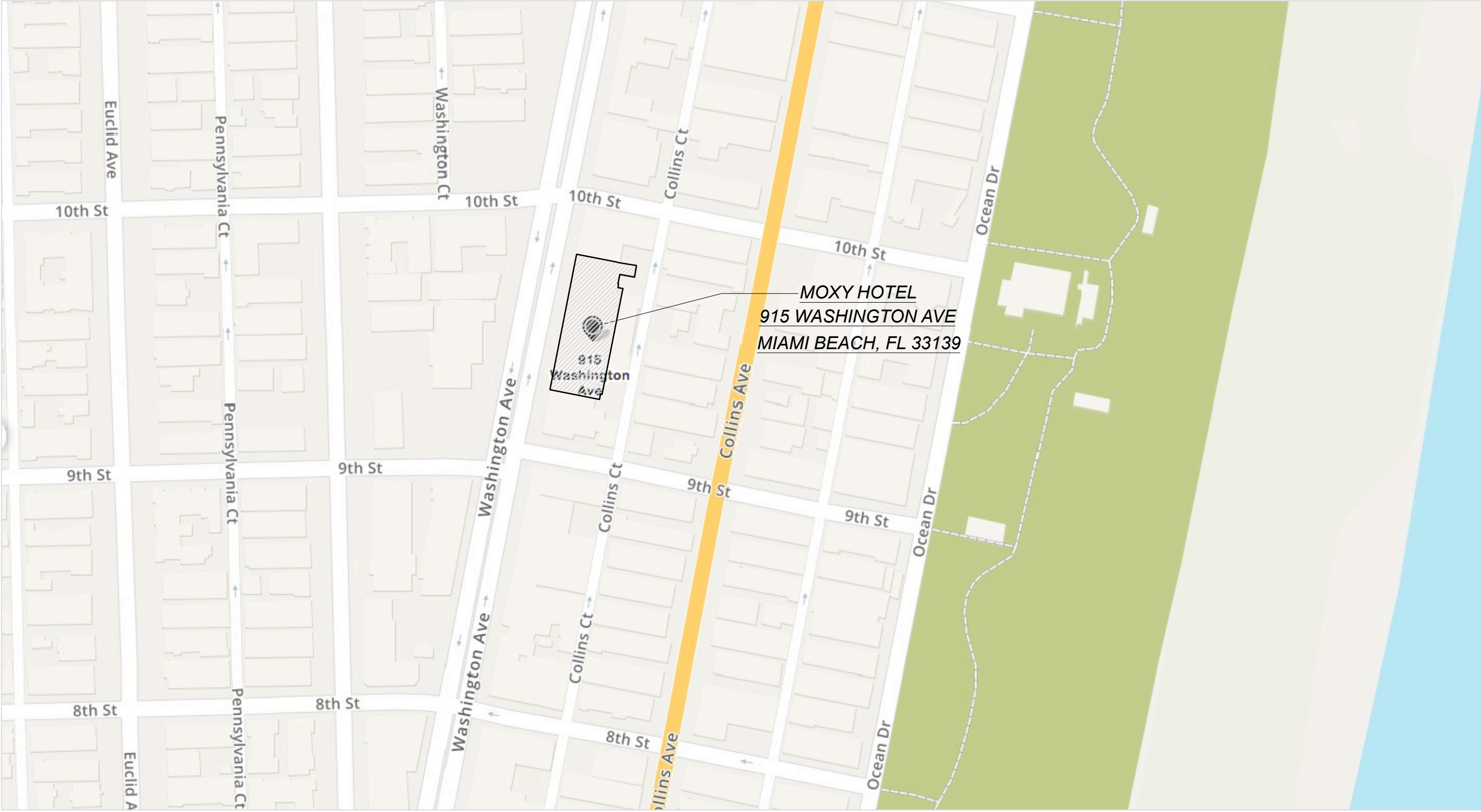
E

D

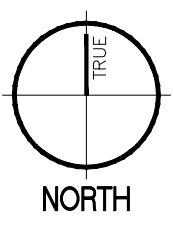
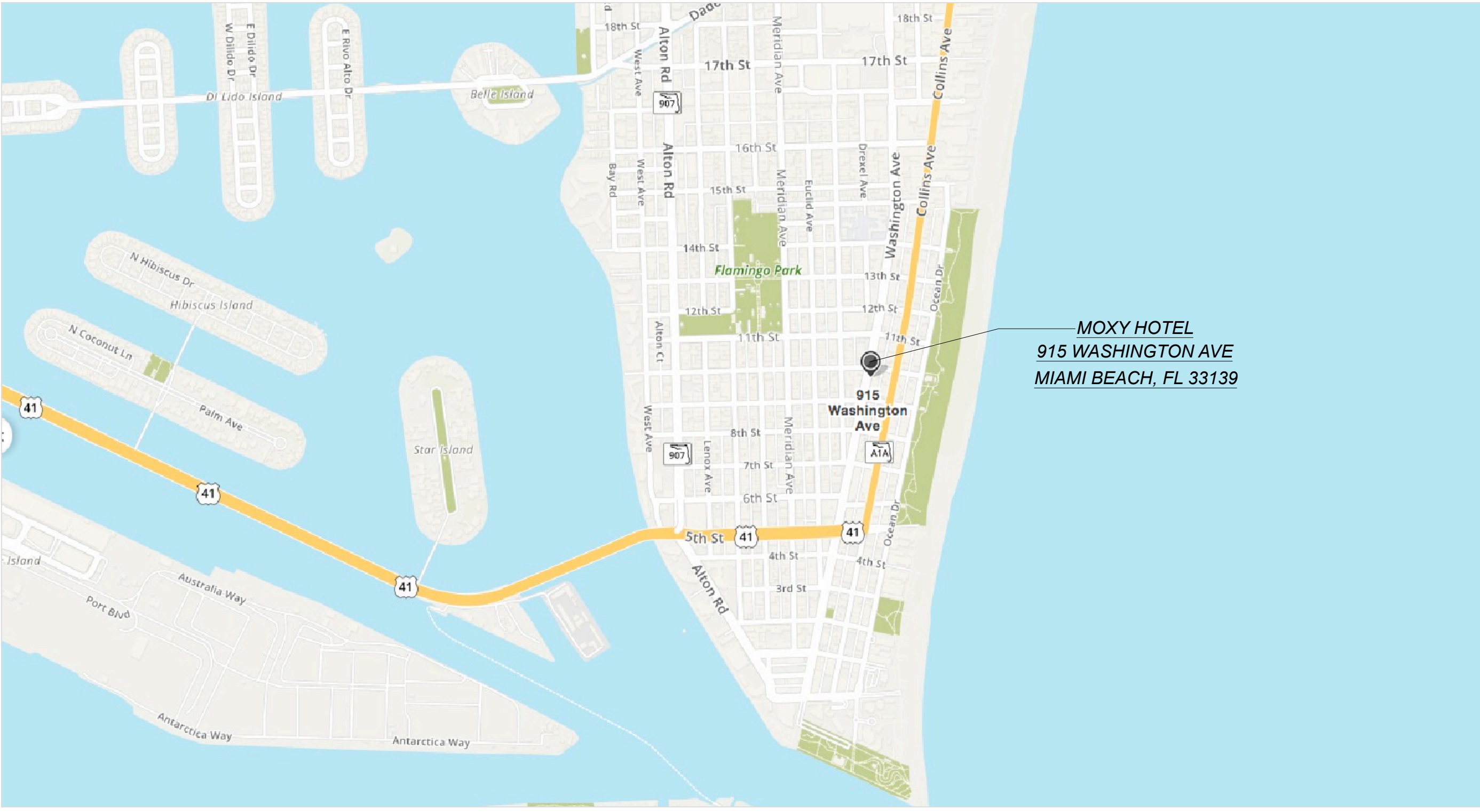
C

B

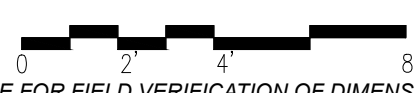
A



2 MOXY HOTEL LOCATION  
SCALE: N.T.S.

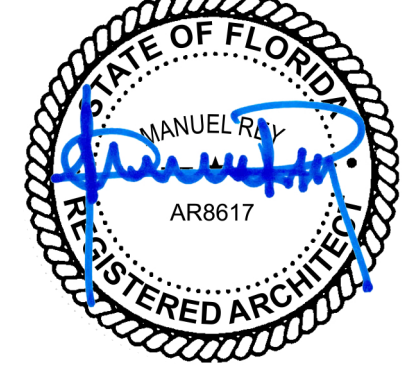


1 MOXY HOTEL SITE MAP  
SCALE: N.T.S.



ALL CONTRACTORS ARE RESPONSIBLE FOR FIELD VERIFICATION OF DIMENSIONS

STAMP:



MANUEL REY  
REGISTERED PROFESSIONAL ARCHITECT  
STATE OF FLORIDA LICENSE NO. 9817  
A-44020037572 18/02/2019-02



7265 NE 4ND AVE, SUITE 101  
MIAMI FL 33138  
786.953.7455  
WWW.SALADINODESIGN.COM

PROJECT:

**MOXY HOTEL**  
915 WASHINGTON AVE  
MIAMI BEACH, FL 33139

OWNER:

**LIGHTSTONE**  
460 PARK AVENUE  
NEW YORK, NY 10022

M.E.P.:

**ARPE ENGINEERING**  
2020 PONCE DE LEON BLVD, SUITE 1002  
CORAL GABLES, FL 33134  
PH: 305.444.9809

STRUCTURAL:

**YHCE ENGINEERING**  
99 NW 27TH AVE  
MIAMI, FL 33125  
PH: 305.969.9423

MTCI / PRIVATE PROVIDER:

GENERAL NOTES:

ALL LEGAL RIGHTS, INCLUDING BUT NOT LIMITED TO, COPYRIGHT AND DESIGN, PATENT RIGHTS, IN THE DESIGN, ARRANGEMENTS, AND PLANS SHOWN ON THIS DOCUMENT ARE THE PROPERTY OF SALADINO DESIGN STUDIOS INC., AND WERE DEVELOPED FOR USE SOLELY ON THIS PROJECT. THEY MAY NOT BE USED OR REUSED IN WHOLE OR IN PART, EXCEPT IN CONNECTION WITH THIS PROJECT, WITHOUT THE PRIOR WRITTEN CONSENT OF SDS, INC.

REVISIONS

| ISSUE | ISSUE | DATE/FOR |
|-------|-------|----------|
|       |       |          |
|       |       |          |
|       |       |          |
|       |       |          |
|       |       |          |
|       |       |          |
|       |       |          |
|       |       |          |
|       |       |          |

PROJECT NO:

1915 DRAWN BY: CAPU

SCALE:

CHECKED BY: SS

DATE:

DRAWING:

ENLARGED  
MAP LOCATIONS

SHEET NO.

**A0.04**  
HISTORIC PRESERVATION  
BOARD

1

2

3

4



2 REFERENCE PHOTO  
SCALE: N.T.S.



3 REFERENCE PHOTO  
SCALE: N.T.S.



1 REFERENCE PHOTO  
SCALE: N.T.S.



ALL CONTRACTORS ARE RESPONSIBLE FOR FIELD VERIFICATION OF DIMENSIONS

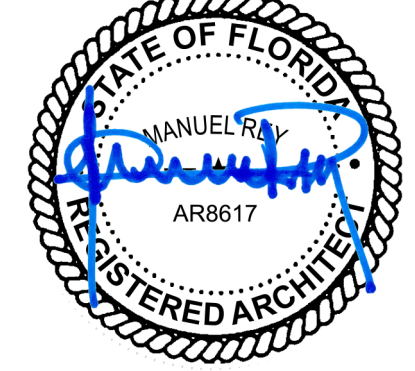
1

2

3

4

STAMP:



MANUEL REY  
REGISTERED PROFESSIONAL ARCHITECT  
STATE OF FLORIDA LICENSE NO. 9517  
A-000003707 B-00001842



7265 NE 4ND AVE, SUITE 101  
MIAMI, FL 33138  
786.953.7455  
WWW.SALADINODESIGN.COM

PROJECT:

**MOXY HOTEL**  
915 WASHINGTON AVE  
MIAMI BEACH, FL 33139

OWNER:

**LIGHTSTONE**  
460 PARK AVENUE  
NEW YORK, NY 10022

M.E.P.:

**ARPE ENGINEERING**  
2020 PONCE DE LEON BLVD, SUITE 1002  
CORAL GABLES, FL 33134  
PH: 305.444.9809

STRUCTURAL:

**YHCE ENGINEERING**  
99 NW 27TH AVE  
MIAMI, FL 33125  
PH: 305.969.9423

MTCI / PRIVATE PROVIDER:

**GENERAL NOTES:**  
ALL LEGAL RIGHTS, INCLUDING BUT NOT LIMITED TO, COPYRIGHT AND DESIGN, PATENT RIGHTS, IN THE DESIGN, ARRANGEMENTS, AND PLANS SHOWN ON THIS DOCUMENT ARE THE PROPERTY OF SALADINO DESIGN STUDIOS INC., AND WERE DEVELOPED FOR USE SOLELY ON THIS PROJECT. THEY MAY NOT BE USED OR REUSED IN WHOLE OR IN PART, EXCEPT IN CONNECTION WITH THIS PROJECT, WITHOUT THE PRIOR WRITTEN CONSENT OF SDS, INC.

REVISIONS

| ISSUE | ISSUE | DATE/FOR |
|-------|-------|----------|
|       |       |          |
|       |       |          |
|       |       |          |
|       |       |          |
|       |       |          |
|       |       |          |
|       |       |          |
|       |       |          |
|       |       |          |

PROJECT NO: 1915  
SCALE: DRAWN BY: CAPU  
CHECKED BY: SS  
DATE:

DRAWING:

SURROUNDING SITE PHOTO

SHEET NO.

**A0.05.1**  
HISTORIC PRESERVATION  
BOARD

E

D

C

B

A

THE DESIGNS INDICATED IN THESE DRAWINGS ARE PROPERTY OF SALADINO DESIGN STUDIOS INC.

1

2

3

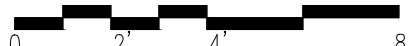
4



2 REFERENCE PHOTO  
SCALE: N.T.S.



1 REFERENCE PHOTO  
SCALE: N.T.S.



ALL CONTRACTORS ARE RESPONSIBLE FOR FIELD VERIFICATION OF DIMENSIONS

E

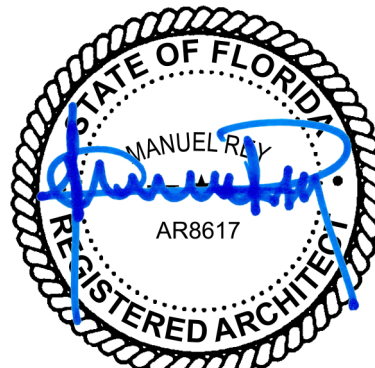
D

C

B

A

STAMP:



MANUEL REY  
REGISTERED PROFESSIONAL ARCHITECT  
STATE OF FLORIDA LICENSE NO. 8617  
A-4402003707 B-420001842



7265 NE 4ND AVE, SUITE 101  
MIAMI FL 33138  
786.953.7455  
WWW.SALADINODESIGN.COM

PROJECT:

**MOXY HOTEL**  
915 WASHINGTON AVE  
MIAMI BEACH, FL 33139

OWNER:

**LIGHTSTONE**  
460 PARK AVENUE  
NEW YORK, NY 10022

M.E.P.:

**ARPE ENGINEERING**  
2020 PONCE DE LEON BLVD, SUITE 1002  
CORAL GABLES, FL 33134  
PH: 305.444.9809

STRUCTURAL:

**YHCE ENGINEERING**  
99 NW 27TH AVE  
MIAMI, FL 33125  
PH: 305.969.9423

MTCI / PRIVATE PROVIDER:

GENERAL NOTES:

ALL LEGAL RIGHTS, INCLUDING BUT NOT LIMITED TO, COPYRIGHT AND DESIGN, PATENT RIGHTS, IN THE DESIGN, ARRANGEMENTS, AND PLANS SHOWN ON THIS DOCUMENT ARE THE PROPERTY OF SALADINO DESIGN STUDIOS INC., AND WERE DEVELOPED FOR USE SOLELY ON THIS PROJECT. THEY MAY NOT BE USED OR REUSED IN WHOLE OR IN PART, EXCEPT IN CONNECTION WITH THIS PROJECT, WITHOUT THE PRIOR WRITTEN CONSENT OF SDS, INC.

REVISIONS

| ISSUE | ISSUE | DATE/FOR |
|-------|-------|----------|
|       |       |          |
|       |       |          |
|       |       |          |
|       |       |          |
|       |       |          |
|       |       |          |
|       |       |          |
|       |       |          |
|       |       |          |

PROJECT NO: 1915 DRAWN BY: CAPU

SCALE: CHECKED BY: SS

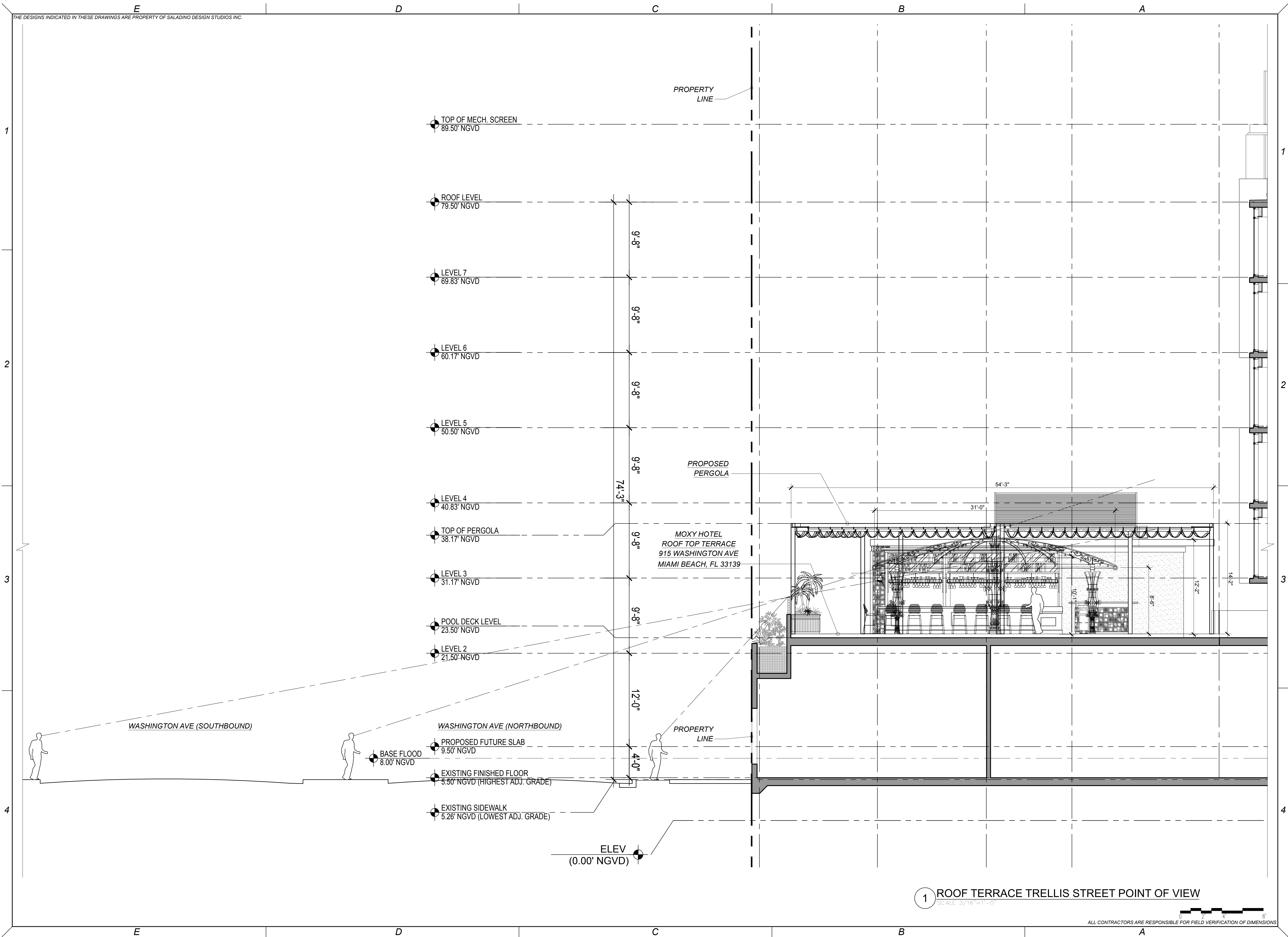
DATE:

DRAWING:

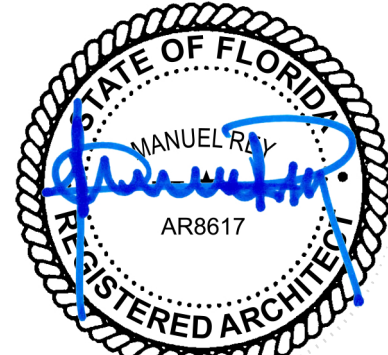
SURROUNDING SITE PHOTO

SHEET NO.

**A0.05.2**  
HISTORIC PRESERVATION  
BOARD



STAMP:



MANUEL REY  
REGISTERED PROFESSIONAL ARCHITECT  
STATE OF FLORIDA LICENSE NO. 8617  
A-APR00037272 / BP00011842



7265 NE 4ND AVE, SUITE 101  
MIAMI FL 33138  
786.953.7455  
WWW.SALADINODESIGN.COM

PROJECT:

**MOXY HOTEL**  
915 WASHINGTON AVE  
MIAMI BEACH, FL 33139

OWNER:

**LIGHTSTONE**  
460 PARK AVENUE  
NEW YORK, NY 10022

M.E.P.:

**ARPE ENGINEERING**  
2020 PONCE DE LEON BLVD, SUITE 1002  
CORAL GABLES, FL 33134  
PH: 305.444.9809

STRUCTURAL:

**YHCE ENGINEERING**  
99 NW 27TH AVE  
MIAMI, FL 33125  
PH: 305.969.9423

MTCI / PRIVATE PROVIDER:

**GENERAL NOTES:**  
ALL LEGAL RIGHTS, INCLUDING BUT NOT LIMITED TO, COPYRIGHT AND DESIGN, PATENT RIGHTS, IN THE DESIGN, ARRANGEMENTS, AND PLANS SHOWN ON THIS DOCUMENT ARE THE PROPERTY OF SALADINO DESIGN STUDIOS INC., AND WERE DEVELOPED FOR USE SOLELY ON THIS PROJECT. THEY MAY NOT BE USED OR REUSED IN WHOLE OR IN PART, EXCEPT IN CONNECTION WITH THIS PROJECT, WITHOUT THE PRIOR WRITTEN CONSENT OF SDS, INC.

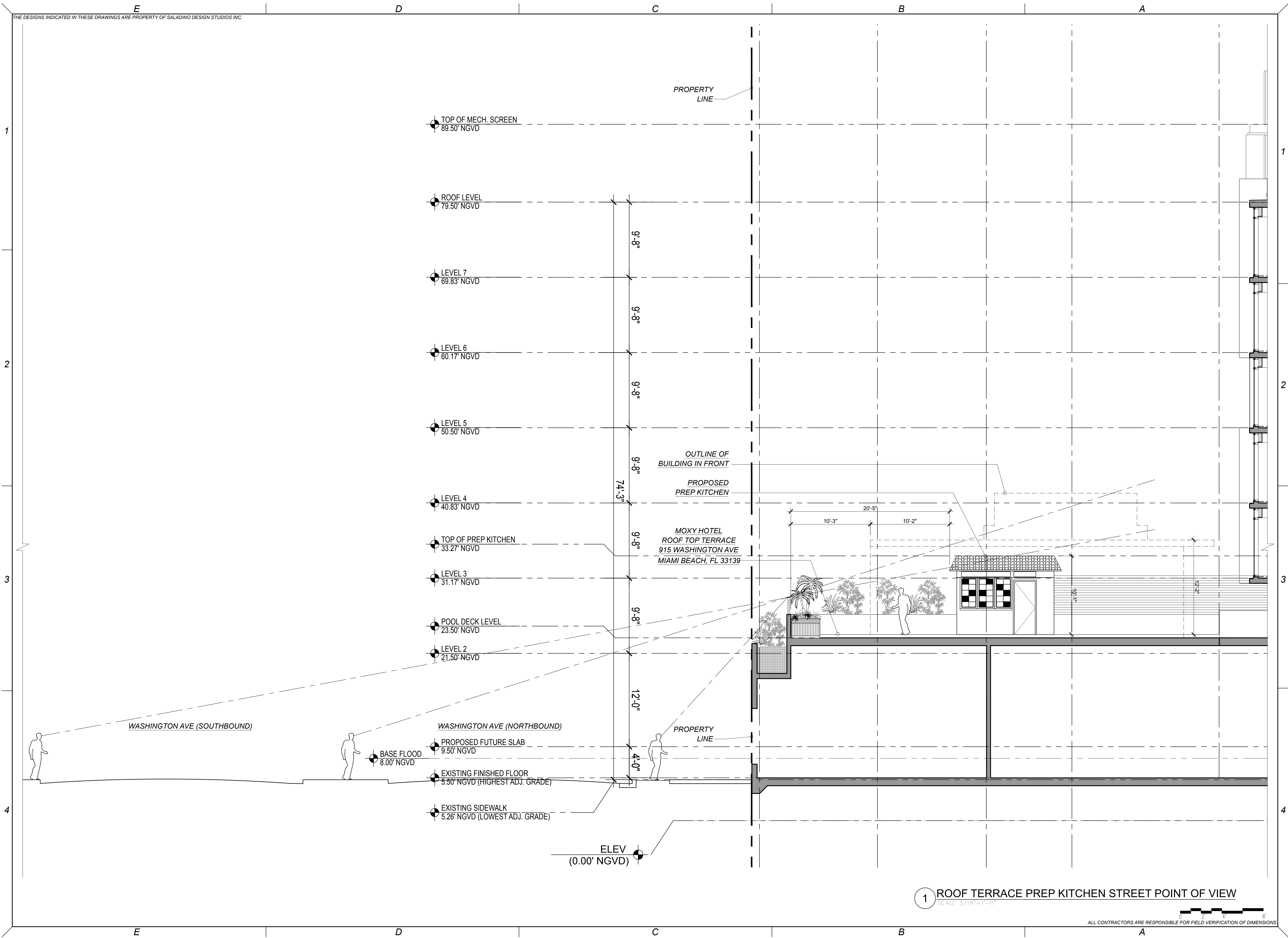
REVISIONS

| ISSUE | ISSUE | DATE/FOR |
|-------|-------|----------|
|       |       |          |
|       |       |          |
|       |       |          |
|       |       |          |
|       |       |          |
|       |       |          |
|       |       |          |
|       |       |          |
|       |       |          |
|       |       |          |

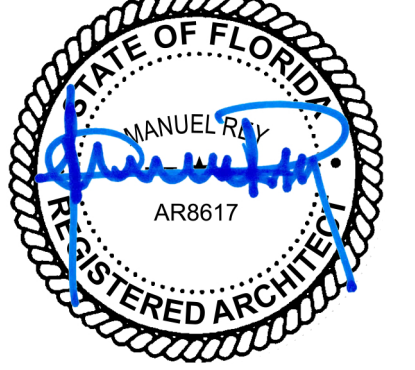
PROJECT NO: 1915 DRAWN BY: CAPU  
SCALE: CHECKED BY: SS  
DATE:

DRAWING:  
ROOF TERRACE TRELLIS  
STREET POINT OF VIEW

SHEET NO. **A0.06.1**  
HISTORIC PRESERVATION  
BOARD



STAMP:



MANUEL REY  
REGISTERED PROFESSIONAL ARCHITECT  
STATE OF FLORIDA LICENSE NO. 8617  
A-APR0003702 / BP20001842



7265 NE 4ND AVE, SUITE 101  
MIAMI FL 33138  
786.953.7455  
WWW.SALADINODESIGN.COM

PROJECT:  
**MOXY HOTEL**  
915 WASHINGTON AVE  
MIAMI BEACH, FL 33139

OWNER:  
**LIGHTSTONE**  
460 PARK AVENUE  
NEW YORK, NY 10022

M.E.P.:  
**ARPE ENGINEERING**  
2020 PONCE DE LEON BLVD, SUITE 1002  
CORAL GABLES, FL 33134  
PH: 305.444.9809

STRUCTURAL:  
**YHCE ENGINEERING**  
99 NW 27TH AVE  
MIAMI, FL 33125  
PH: 305.969.9423

MTCI / PRIVATE PROVIDER:

GENERAL NOTES:  
ALL LEGAL RIGHTS, INCLUDING BUT NOT LIMITED TO, COPYRIGHT AND DESIGN, PATENT RIGHTS, IN THE DESIGN, ARRANGEMENTS, AND PLANS SHOWN ON THIS DOCUMENT ARE THE PROPERTY OF SALADINO DESIGN STUDIOS INC., AND WERE DEVELOPED FOR USE SOLELY ON THIS PROJECT. THEY MAY NOT BE USED OR REUSED IN WHOLE OR IN PART, EXCEPT IN CONNECTION WITH THIS PROJECT, WITHOUT THE PRIOR WRITTEN CONSENT OF SDS, INC.

| REVISIONS |       |          |
|-----------|-------|----------|
| ISSUE     | ISSUE | DATE/FOR |
|           |       |          |
|           |       |          |
|           |       |          |
|           |       |          |
|           |       |          |
|           |       |          |
|           |       |          |
|           |       |          |
|           |       |          |

PROJECT NO.: 1915  
SCALE: 3/16" = 1'-0"  
DATE:  

DRAWING:  
ROOF TERRACE PREP KITCHEN  
STREET POINT OF VIEW

SHEET NO. **A0.06.2**  
HISTORIC PRESERVATION BOARD

1

2

3

4

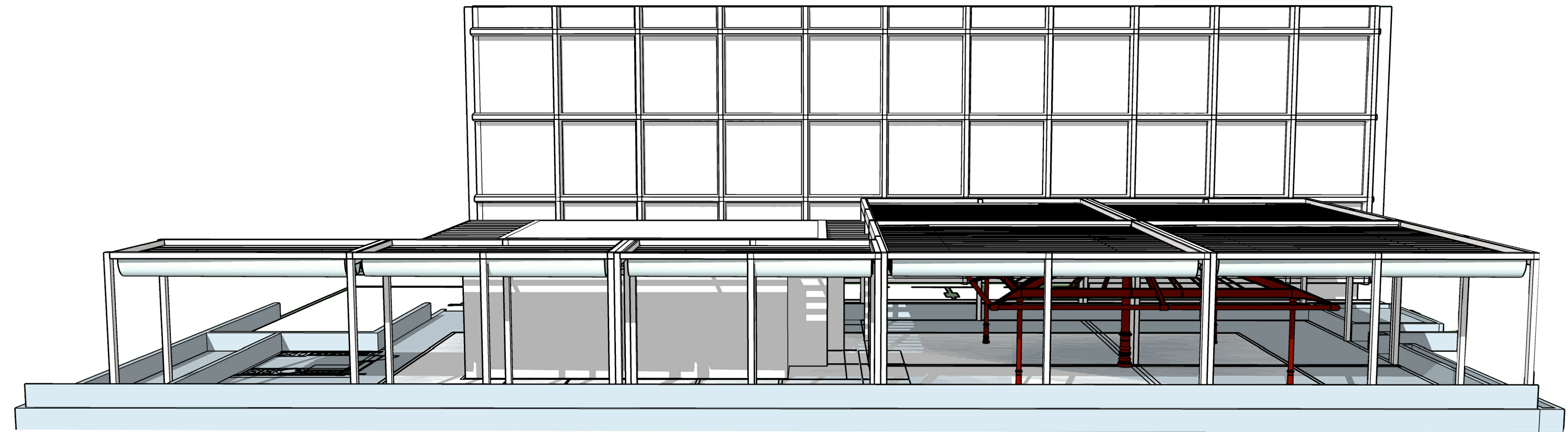
E

D

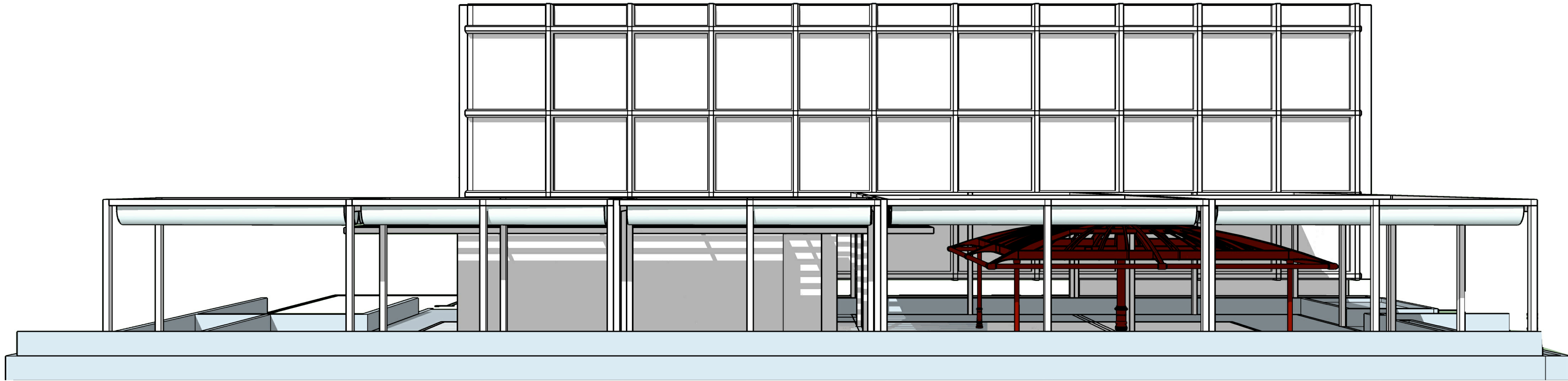
C

B

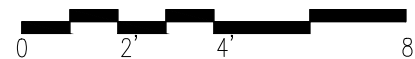
A



2 TRELLIS 3D VIEW  
NOT TO SCALE

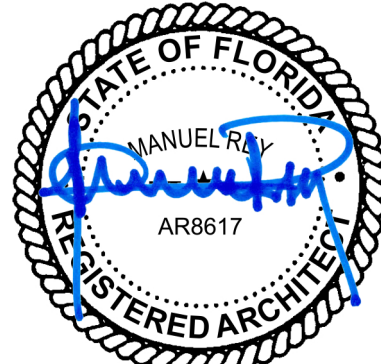


1 TRELLIS 3D VIEW  
NOT TO SCALE



ALL CONTRACTORS ARE RESPONSIBLE FOR FIELD VERIFICATION OF DIMENSIONS

STAMP:



MANUEL REY  
REGISTERED PROFESSIONAL ARCHITECT  
STATE OF FLORIDA LICENSE NO. 8617  
A-4402003707 (BP)2001-1942



7265 NE 4ND AVE, SUITE 101  
MIAMI FL 33138  
786.953.7455  
WWW.SALADINODESIGN.COM

PROJECT:

**MOXY HOTEL**  
915 WASHINGTON AVE  
MIAMI BEACH, FL 33139

OWNER:

**LIGHTSTONE**  
460 PARK AVENUE  
NEW YORK, NY 10022

M.E.P.:

**ARPE ENGINEERING**  
2020 PONCE DE LEON BLVD, SUITE 1002  
CORAL GABLES, FL 33134  
PH: 305.444.9809

STRUCTURAL:

**YHCE ENGINEERING**  
99 NW 27TH AVE  
MIAMI, FL 33125  
PH: 305.969.9423

MTCI / PRIVATE PROVIDER:

GENERAL NOTES:

ALL LEGAL RIGHTS, INCLUDING BUT NOT LIMITED TO, COPYRIGHT AND DESIGN, PATENT RIGHTS, IN THE DESIGN, ARRANGEMENTS, AND PLANS SHOWN ON THIS DOCUMENT ARE THE PROPERTY OF SALADINO DESIGN STUDIOS INC., AND WERE DEVELOPED FOR USE SOLELY ON THIS PROJECT. THEY MAY NOT BE USED OR REUSED IN WHOLE OR IN PART, EXCEPT IN CONNECTION WITH THIS PROJECT, WITHOUT THE PRIOR WRITTEN CONSENT OF SDS, INC.

REVISIONS

ISSUE ISSUE DATE/FOR

PROJECT NO:

1915

DRAWN BY:

CAPU

SCALE:

CHECKED BY:

SS

DATE:

DRAWING:

ROOF TRELLIS  
3D VIEWS

SHEET NO.

**A0.07.1**  
HISTORIC PRESERVATION  
BOARD