

STAMP:

MANUEL REY
REGISTERED PROFESSIONAL ARCHITECT
STATE OF FLORIDA LICENSE NO. 9517
A-APR0003707 B-PR0001942

2
SALADINO DESIGN STUDIOS

7265 NE 4ND AVE, SUITE 101
MIAMI FL 33138
786.953.7455
WWW.SALADINODESIGN.COM

PROJECT:
MOXY HOTEL
915 WASHINGTON AVE
MIAMI BEACH, FL 33139

OWNER:
LIGHTSTONE
460 PARK AVENUE
NEW YORK, NY 10022

M.E.P.:
ARPE ENGINEERING
2020 PONCE DE LEON BLVD, SUITE 1002
CORAL GABLES, FL 33134
PH: 305.444.9809

STRUCTURAL:
YHCE ENGINEERING
99 NW 27TH AVE
MIAMI, FL 33125
PH: 305.969.9423

MTCI/PRIVATE PROVIDER:

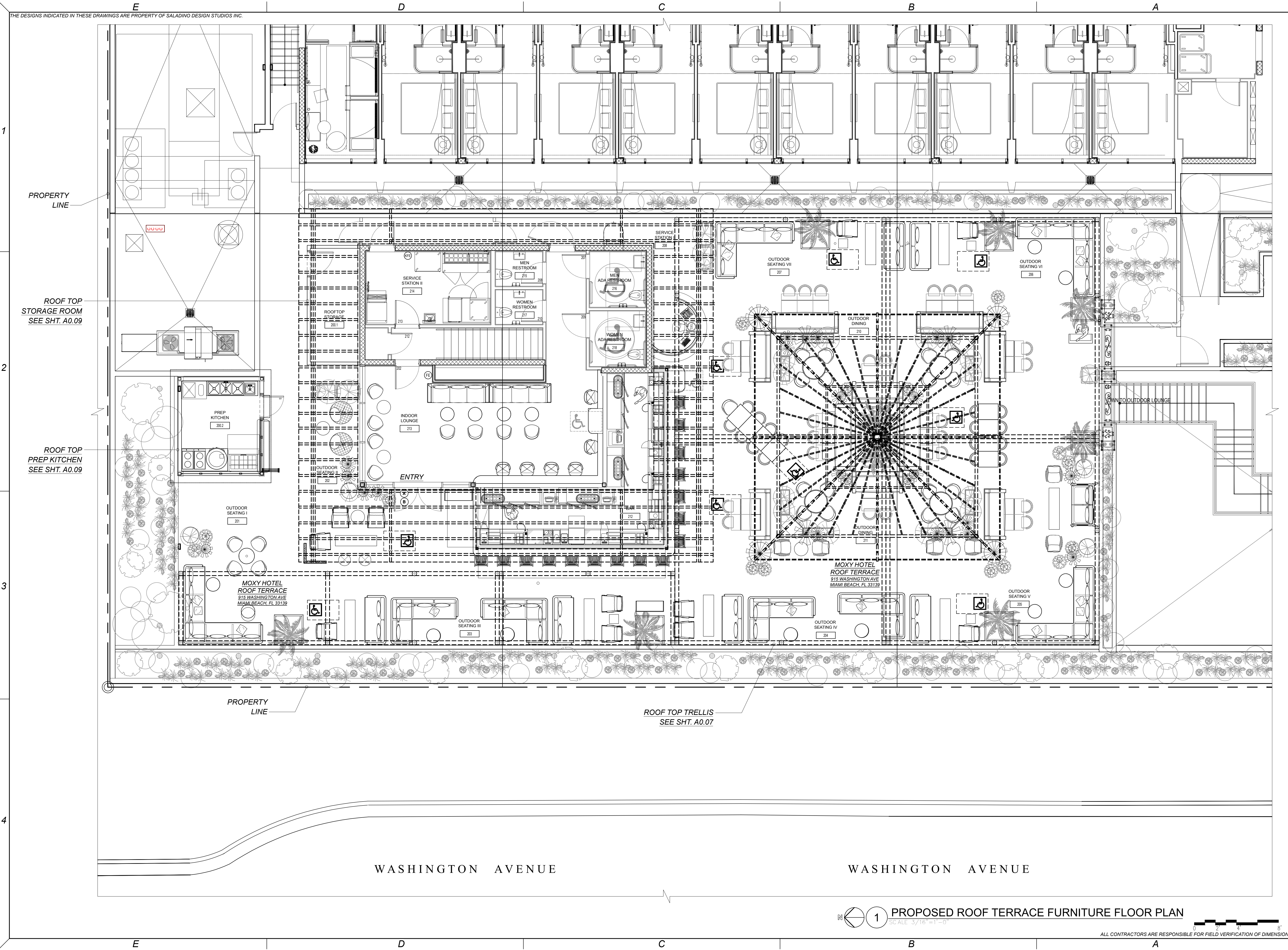
GENERAL NOTES:
ALL LEGAL RIGHTS, INCLUDING BUT NOT LIMITED TO, COPYRIGHT AND DESIGN, PATENT RIGHTS, IN THE DESIGN, ARRANGEMENTS, AND PLANS SHOWN ON THIS DOCUMENT ARE THE PROPERTY OF SALADINO DESIGN STUDIOS INC., AND WERE DEVELOPED FOR USE SOLELY ON THIS PROJECT. THEY MAY NOT BE USED OR REUSED IN WHOLE OR IN PART, EXCEPT IN CONNECTION WITH THIS PROJECT, WITHOUT THE PRIOR WRITTEN CONSENT OF SIS, INC.

REVISIONS		
ISSUE	ISSUE	DATE/FOR

PROJECT NO: 1915 DRAWN BY: CAPU
SCALE: CHECKED BY: SS
DATE:
DRAWING:

EXISTING ROOF TERRACE
FURNITURE FLOOR PLAN

SHEET NO. **A0.01B**
HISTORIC PRESERVATION
BOARD



THE DESIGNS INDICATED IN THESE DRAWINGS ARE PROPERTY OF SALADINO DESIGN STUDIOS INC.

PROPERTY LINE

ROOF TOP STORAGE ROOM
SEE SHT. A0.09

ROOF TOP PREP KITCHEN
SEE SHT. A0.09

PROPERTY LINE

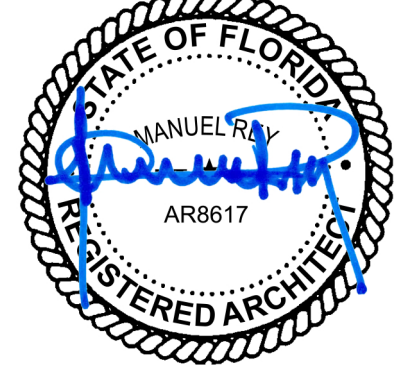
ROOF TOP TRELLIS
SEE SHT. A0.07

WASHINGTON AVENUE

WASHINGTON AVENUE

1 PROPOSED ROOF TERRACE FURNITURE FLOOR PLAN
SCALE: 3/16" = 1'-0"
ALL CONTRACTORS ARE RESPONSIBLE FOR FIELD VERIFICATION OF DIMENSIONS

STAMP:



MANUEL REY
REGISTERED PROFESSIONAL ARCHITECT
STATE OF FLORIDA LICENSE NO. 9517
A-APR0003707 B-PR0001842



7265 NE 4TH AVE. SUITE 101
MIAMI FL 33138
786.953.7455
WWW.SALADINODESIGN.COM

PROJECT:

MOXY HOTEL
915 WASHINGTON AVE
MIAMI BEACH, FL 33139

OWNER:

LIGHTSTONE
460 PARK AVENUE
NEW YORK, NY 10022

M.E.P.:

ARPE ENGINEERING
2020 PONCE DE LEON BLVD. SUITE 1002
CORAL GABLES, FL 33134
PH: 305.444.9809

STRUCTURAL:

YHCE ENGINEERING
99 NW 27TH AVE
MIAMI, FL 33125
PH: 305.969.9423

MTCI / PRIVATE PROVIDER:

GENERAL NOTES:
ALL LEGAL RIGHTS, INCLUDING BUT NOT LIMITED TO, COPYRIGHT AND DESIGN, PATENT RIGHTS IN THE DESIGN, ARRANGEMENTS, AND PLANS SHOWN ON THIS DOCUMENT ARE THE PROPERTY OF SALADINO DESIGN STUDIOS INC., AND WERE DEVELOPED FOR USE SOLELY ON THIS PROJECT. THEY MAY NOT BE USED OR REUSED IN WHOLE OR IN PART, EXCEPT IN CONNECTION WITH THIS PROJECT, WITHOUT THE PRIOR WRITTEN CONSENT OF SDS, INC.

REVISIONS		
ISSUE	ISSUE	DATE/FOR

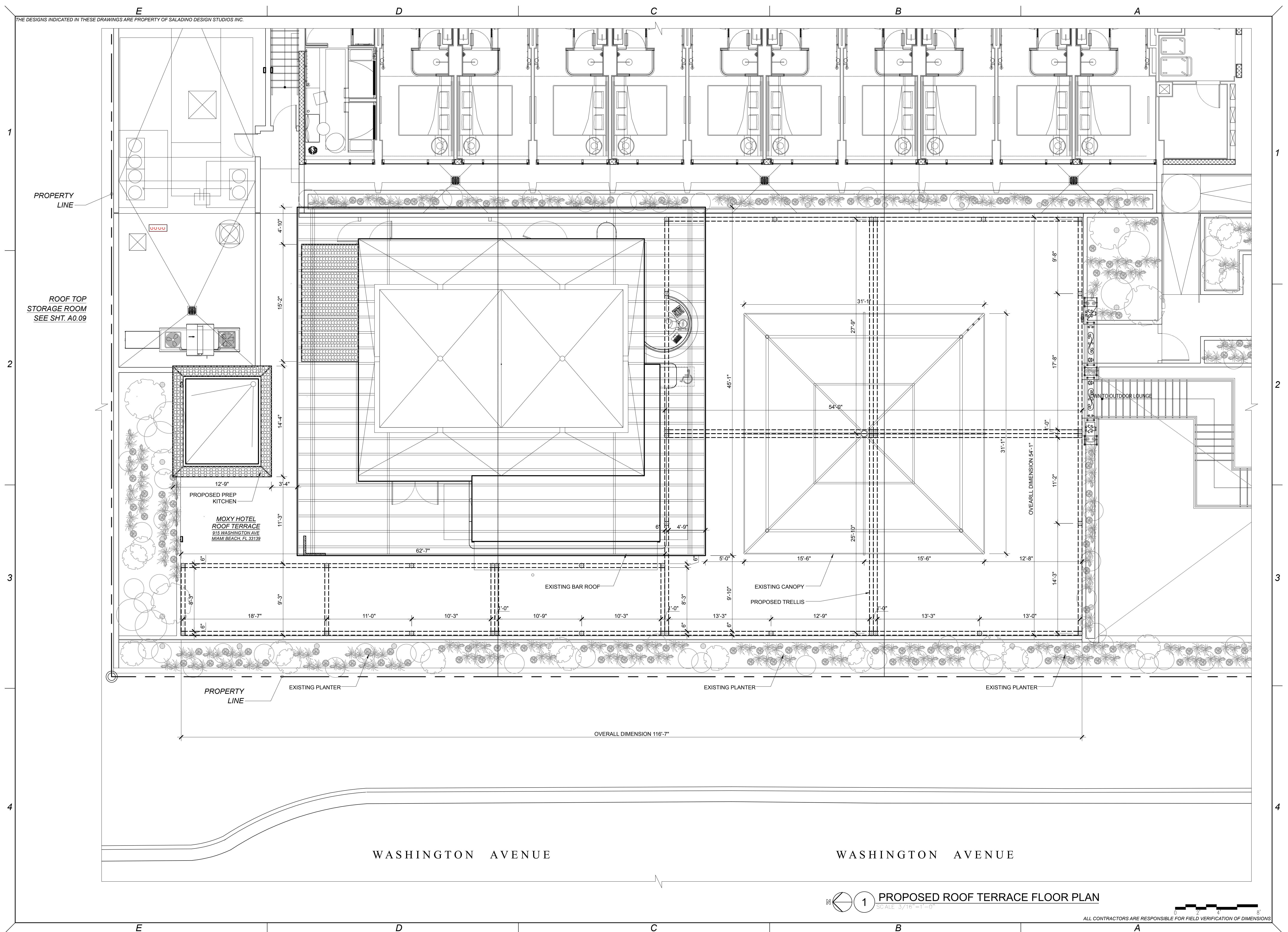
PROJECT NO: 1915
SCALE: 3/16" = 1'-0"
DATE:
DRAWING:

PROPOSED ROOF TERRACE FURNITURE FLOOR PLAN

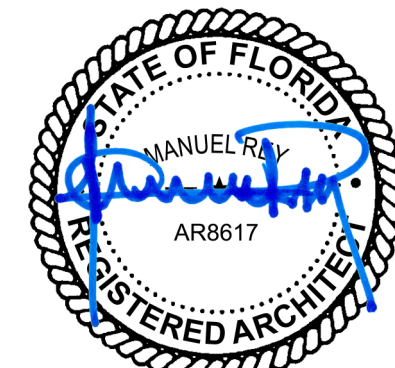
SHEET NO. **A0.01C**
HISTORIC PRESERVATION BOARD

E

THE DESIGNS INDICATED IN THESE DRAWINGS ARE PROPERTY OF SALADINO DESIGN STUDIOS INC.



STAMP:



MANUEL REY
REGISTERED PROFESSIONAL ARCHITECT
STATE OF FLORIDA LICENSE No. 8517
AA#26003757 IB#26001842



7265 NE 4ND AVE. SUITE 1
MIAMI FL 33138
786.953.7455
WWW.SALADINODESIGN.COM

PROJECT	
---------	--

MOXY HOTEL
915 WASHINGTON AVE
MIAMI BEACH, FL 33139

OWNERS

R: **LIGHTSTONE**
460 PARK AVENUE
NEW YORK, NY. 10022

M.E.P.

M.E.P.:
ARPE ENGINEERING
2020 PONCE DE LEON BLVD. SUITE 1002
CORAL GABLES, FL. 33134
PH: 305.444.9809

STRUC

STRUCTURAL:
YHCE ENGINEERING
99 NW 27TH AVE
MIAMI, FL 33125
PH: 305.969.9423

MTCI/

MTCI / PRIVATE PROVIDER:

GENERAL NOTES:

ALL LEGAL RIGHTS, INCLUDING BUT NOT LIMITED TO, COPYRIGHT AND DESIGN PATENT RIGHTS, IN THE DESIGN, ARRANGEMENTS, AND PLANS SHOWN ON THIS DOCUMENT ARE THE PROPERTY OF SALADINO DESIGN STUDIOS INC., AND WERE DEVELOPED FOR USE SOLELY ON THIS PROJECT. THEY MAY NOT BE USED OR REUSED IN WHOLE OR IN PART, EXCEPT IN CONNECTION WITH THIS PROJECT, WITHOUT THE PRIOR WRITTEN CONSENT OF SDS, INC.

REVISIONS

[illegible]

PROJECT No:	1915	DRAWN BY:	CAPU
SCALE:		CHECKED BY:	SS
DATE:			

DRAWING

PROPOSED ROOF TERRACE
FLOOR PLAN

SHEET

NO. **A0.01D**
HISTORIC PRESERVATION
BOARD