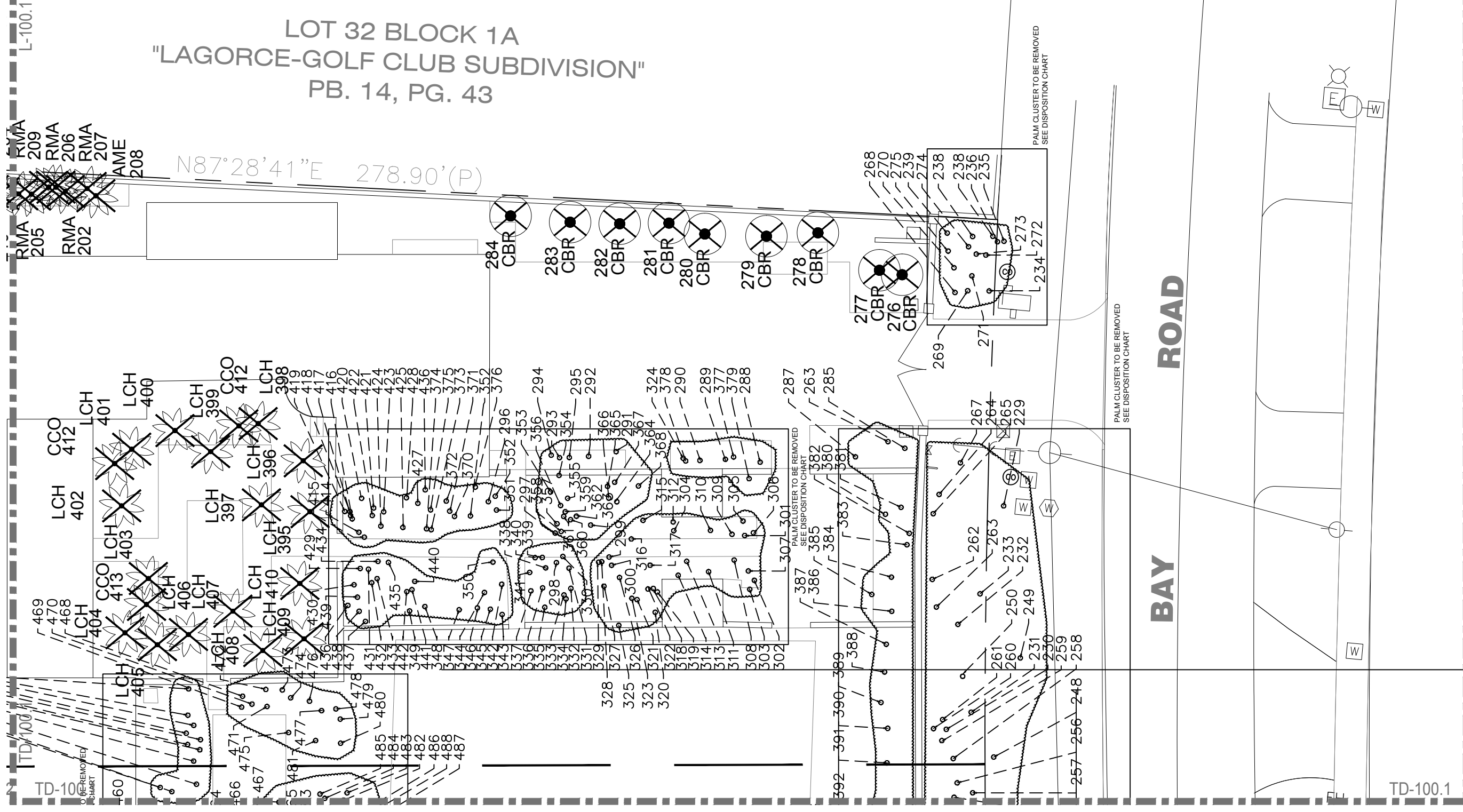


LOT 32 BLOCK 1A
"LAGORCE-GOLF CLUB SUBDIVISION"
PB. 14, PG. 43

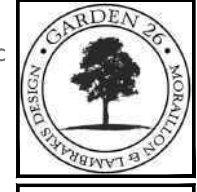
N87°28'41"E 278.90'(P)



REVISIONS / SUBMISSIONS

PRIVATE RESIDENCE
5800 North Bay Road,
Miami Beach, FL 33140

TREE DISPOSITION PLAN
ZOOM IN



FERNANDO WONG
OUTDOOR LIVING DESIGN

DRAWN BY: JN
CHECKED BY: FW
DATE: JULY 2, 2021
SCALE: 1/16" = 1'-0"

BAY

LOT 33

$N00^{\circ}33'13"E$

100.15

L-100.2

TD-100.2

TD-100.2

453
452
451
450
449
447
448
446
445
444
443

CNU 161

CNU 165

CNU 162

CNU 179

CNU 178

CNU 177

CNU 174

CNU 173

CNU 172

CNU 177

AME 182

AME 185

AME 187

AME 188

AME 191

AME 189

AME 186

AME 183

AME 184

AME 190

AME 193

AME 192

AME 194

AME 189

AME 186

AME 191

AME 189

AME 186

RMA 195

RMA 214

RMA 196

RMA 197

RMA 199

RMA 213

RMA 212

RMA 201

RMA 204

RMA 198

RMA 203

RMA 200

RMA 211

RMA 210

TREE TO REMAIN

194

REVISIONS / SUBMISSIONS

PRIVATE RESIDENCE
5800 North Bay Road,
Miami Beach, FL 33140

TREE DISPOSITION PLAN
ZOOM IN



FERNANDO WONG
OUTDOOR LIVING DESIGN

DRAWN BY: JN
CHECKED BY: FW
DATE: JULY 2, 2021
SCALE: 1/16" = 1'-0"

TD-100.2



BISCAYNE

LOT 34
N03°48'56"W 99.70'

S81°33'13"W



REVISIONS / SUBMISSIONS

PRIVATE RESIDENCE
5800 North Bay Road,
Miami Beach, FL 33140

TREE DISPOSITION PLAN
ZOOM IN



FERNANDO WONG
OUTDOOR LIVING DESIGN

DRAWN BY: JN
CHECKED BY: FW
DATE: JULY 2, 2021
SCALE: 1/16" = 1'-0"

TD-100.3





LOT 35 BLOCK 1A
 "CE-GOLF CLUB SUBDIVISION"
 PB. 14, PG. 43

NORTH

W. 58th STREET

TD-100.4

TD-100.4

TD-100.4



REVISIONS / SUBMISSIONS	

PRIVATE RESIDENCE
 5800 North Bay Road,
 Miami Beach, FL 33140

TREE DISPOSITION PLAN
 ZOOM IN



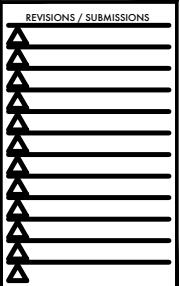
FERNANDO WONG
 OUTDOOR LIVING DESIGN

DRAWN BY: JN
 CHECKED BY: FW
 DATE: JULY 2, 2021
 SCALE: 1/16" = 1'-0"

TD-100.4

Tree #	Common Name	Scientific Name	Trunk Diameter (in)	Overall Height (ft)	Crown Spread (ft)	Condition	Arborist Disposition	Landscape Architect Disposition	Comments
1	Royal Palm	<i>Roystonea regia</i>	17.9	60	18	Good	Retain or Relocate	Relocate	
2	Royal Palm	<i>Roystonea regia</i>	15.4	50	18	Fair-Good	Retain, Remove, or Relocate	Remove	trunk bent due to shade
3	Royal Palm	<i>Roystonea regia</i>	15.4	50	18	Fair-Good	Retain, Remove, or Relocate	Remove	trunk bent due to shade
4	Royal Palm	<i>Roystonea regia</i>	16.2	60	18	Poor	Remove	Remove	trunk split/cracked
5	Royal Palm	<i>Roystonea regia</i>	16.9	60	18	Fair	Retain, Remove, or Relocate	Remove	trunk wounds
6	Royal Palm	<i>Roystonea regia</i>	16.2	50	16	Fair-Good	Retain, Remove, or Relocate	Relocate	top half of trunk thin, irregular
7	Royal Palm	<i>Roystonea regia</i>	15.8	45	18	Good	Retain or Relocate	Relocate	
8	Royal Palm	<i>Roystonea regia</i>	15.9	60	18	Good	Retain or Relocate	Relocate	
9	Royal Palm	<i>Roystonea regia</i>	18.8	45	14	Good	Retain or Relocate	Relocate	top half of trunk a little thin
10	Royal Palm	<i>Roystonea regia</i>	16.2	45	16	Fair-Good	Retain, Remove, or Relocate	Relocate	top half of trunk thin, irregular
10A	Royal Palm	<i>Roystonea regia</i>	13	45	14	Fair-Good	Retain, Remove, or Relocate	Relocate	thin trunk
11	Royal Palm	<i>Roystonea regia</i>	15.4	50	16	Fair-Good	Retain, Remove, or Relocate	Relocate	top half of trunk thin, irregular
12	Royal Palm	<i>Roystonea regia</i>	15.3	50	16	Good	Retain or Relocate	Relocate	
13	Royal Palm	<i>Roystonea regia</i>	16.4	50	16	Good	Retain or Relocate	Relocate	
14	Royal Palm	<i>Roystonea regia</i>	18	50	18	Good	Retain or Relocate	Relocate	
15	Royal Palm	<i>Roystonea regia</i>	14.8	45	12	Fair	Retain, Remove, or Relocate	Remove	curved trunk; spike and nail wounds
16	Royal Palm	<i>Roystonea regia</i>	15.6	45	16	Good	Retain or Relocate	Relocate	
17	Royal Palm	<i>Roystonea regia</i>	17.8	45	16	Good	Retain or Relocate	Relocate	
18	Royal Palm	<i>Roystonea regia</i>	14.8	40	12	Fair-Poor	Retain or Remove	Remove	stunted, thin; nutritional deficiencies
19	Royal Palm	<i>Roystonea regia</i>	18.7	45	14	Fair-Good	Retain, Remove, or Relocate	Relocate	shallow trunk wound
20	Royal Palm	<i>Roystonea regia</i>	16.7	40	16	Poor	Remove	Remove	trunk girdled, probably by slippage of lifting strap
21	Royal Palm	<i>Roystonea regia</i>	15.9	40	14	Fair-Good	Retain, Remove, or Relocate	Relocate	trunk irregular
22	Royal Palm	<i>Roystonea regia</i>	15.5	40	16	Good	Retain or Relocate	Relocate	
23	Royal Palm	<i>Roystonea regia</i>	17.1	40	10	Poor	Remove	Remove	severe trunk cracks; stunted and chlorotic
24	Royal Palm	<i>Roystonea regia</i>	16.9	45	16	Good	Retain or Relocate	Relocate	
25	Royal Palm	<i>Roystonea regia</i>	15.2	50	16	Good	Retain or Relocate	Relocate	
26	Royal Palm	<i>Roystonea regia</i>	16.4	50	16	Good	Retain or Relocate	Relocate	
27	Royal Palm	<i>Roystonea regia</i>	18.2	50	16	Good	Retain or Relocate	Relocate	
28	Royal Palm	<i>Roystonea regia</i>	19.3	40	14	Good	Retain or Relocate	Relocate	double trunk with #29
29	Royal Palm	<i>Roystonea regia</i>	15.7	40	14	Good	Retain or Relocate	Relocate	double trunk with #28
30	Royal Palm	<i>Roystonea regia</i>	18.4	45	16	Good	Retain or Relocate	Relocate	
31	Royal Palm	<i>Roystonea regia</i>	18.2	45	16	Fair-Poor	Retain or Remove	Relocate	large trunk wound app. 30' up
32	Royal Palm	<i>Roystonea regia</i>	16	40	16	Good	Retain or Relocate	Relocate	double trunk with #76 - head bent due to shade
33	Royal Palm	<i>Roystonea regia</i>	16.7	25	16	Good	Retain or Relocate	Relocate	
34	Royal Palm	<i>Roystonea regia</i>	14.2	35	14	Good	Retain or Relocate	Relocate	
35	Royal Palm	<i>Roystonea regia</i>	16.6	30	10	Fair-Poor	Retain or Remove	Relocate	trunk narrowing; nutritional deficiencies
36	Royal Palm	<i>Roystonea regia</i>	18	30	12	Fair-Good	Retain, Remove, or Relocate	Relocate	top half of trunk thin
37	Royal Palm	<i>Roystonea regia</i>	14.2	25	12	Fair	Retain, Remove, or Relocate	Relocate	trunk narrowing
38	Royal Palm	<i>Roystonea regia</i>	19.5	35	12	Fair	Retain, Remove, or Relocate	Relocate	trunk narrowing
39	Royal Palm	<i>Roystonea regia</i>	18.3	35	12	Fair	Retain, Remove, or Relocate	Relocate	thin trunk
40	Royal Palm	<i>Roystonea regia</i>	18.6	30	14	Fair	Retain, Remove, or Relocate	Relocate	top half of trunk thin
41	Royal Palm	<i>Roystonea regia</i>	10.6	35	16	Fair-Good	Retain, Remove, or Relocate	Relocate	
42	Royal Palm	<i>Roystonea regia</i>	11	40	16	Fair-Good	Retain, Remove, or Relocate	Relocate	thin trunk
43	Royal Palm	<i>Roystonea regia</i>	12.5	50	18	Good	Retain or Relocate	Relocate	
44	Royal Palm	<i>Roystonea regia</i>	11	45	16	Good	Retain or Relocate	Relocate	
45	Royal Palm	<i>Roystonea regia</i>	12.7	45	16	Fair-Good	Retain, Remove, or Relocate	Relocate	thin trunk
46	Royal Palm	<i>Roystonea regia</i>	17.2	35	18	Good	Retain or Relocate	Relocate	
47	Royal Palm	<i>Roystonea regia</i>	15.7	30	16	Good	Retain or Relocate	Relocate	
48	Royal Palm	<i>Roystonea regia</i>	8.3	30	16	Good	Retain or Relocate	Relocate	

No Permitting or Mitigation Required								Remain
Specimen Tree								Relocate
Prohibited Species								Remove



PRIVATE RESIDENCE
5800 North Bay Road,
Miami Beach, FL 33140

TREE DISPOSITION CHART

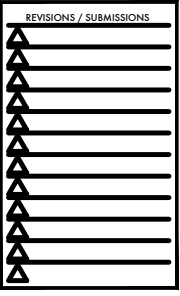


FERNANDO WONG
OUTDOOR LIVING DESIGN

DRAWN BY: JN
CHECKED BY: FW
DATE: JULY 2, 2021
SCALE:

49	Senegal Date Palm	<i>Phoenix reclinata</i>	6.3 +5+6.5	25	15	Fair-Good	Retain, Remove, or Relocate	Remove	shade stress
50	Senegal Date Palm	<i>Phoenix reclinata</i>	6+4.5	20	20	Fair-Good	Retain, Remove, or Relocate	Remove	shade stress
51	Senegal Date Palm	<i>Phoenix reclinata</i>	6	20	10	Fair	Retain, Remove, or Relocate	Remove	shade stress
52	Senegal Date Palm	<i>Phoenix reclinata</i>	5.5	20	10	Fair	Retain, Remove, or Relocate	Remove	shade stress
53	Senegal Date Palm	<i>Phoenix reclinata</i>	9	30 OA	30 OA	Good	Retain, Remove, or Relocate	Remove	#53, 54, 55, 56 same clustering palm
54	Senegal Date Palm	<i>Phoenix reclinata</i>	10.2	30 OA	30 OA	Good	Retain, Remove, or Relocate	Remove	#53, 54, 55, 56 same clustering palm
55	Senegal Date Palm	<i>Phoenix reclinata</i>	11.5	30 OA	30 OA	Good	Retain, Remove, or Relocate	Remove	#53, 54, 55, 56 same clustering palm
56	Senegal Date Palm	<i>Phoenix reclinata</i>	10	30 OA	30 OA	Good	Retain, Remove, or Relocate	Remove	#53, 54, 55, 56 same clustering palm
57	Senegal Date Palm	<i>Phoenix reclinata</i>	6.8	25 OA	25 OA	Good	Retain, Remove, or Relocate	Remove	#57, 58, 59 same clustering palm
58	Senegal Date Palm	<i>Phoenix reclinata</i>	6.2	25 OA	25 OA	Good	Retain, Remove, or Relocate	Remove	#57, 58, 59 same clustering palm
59	Senegal Date Palm	<i>Phoenix reclinata</i>	6.8	25 OA	25 OA	Good	Retain, Remove, or Relocate	Remove	#57, 58, 59 same clustering palm
60	Royal Palm	<i>Roystonea regia</i>	17.9	30	12	Fair-Good	Retain, Remove, or Relocate	Relocate	little thin at top
61	Royal Palm	<i>Roystonea regia</i>	18.5	30	12	Fair-Good	Retain, Remove, or Relocate	Relocate	top half of trunk thin
62	Royal Palm	<i>Roystonea regia</i>	17.6	30	14	Good	Retain or Relocate	Relocate	
63	Royal Palm	<i>Roystonea regia</i>	17.2	35	12	Fair	Retain or Remove	Remove	double trunk with #64 - stunted and irregular trunk
64	Royal Palm	<i>Roystonea regia</i>	13.7	35	12	Poor	Remove	Remove	double trunk with #63 - very thin trunk, trunk wounds, cracks
65	Royal Palm	<i>Roystonea regia</i>	16	50	16	Fair-Good	Retain, Remove, or Relocate	Relocate	little thin at top
66	Royal Palm	<i>Roystonea regia</i>	13.8	50	12	Fair	Retain, Remove, or Relocate	Remove	top half of trunk thin
67	Royal Palm	<i>Roystonea regia</i>	17.6	25	12	Fair-Good	Retain, Remove, or Relocate	Relocate	little thin at top
68	Royal Palm	<i>Roystonea regia</i>	20.3	35	12	Fair	Retain, Remove, or Relocate	Remove	top half of trunk thin; little stunted
69	Royal Palm	<i>Roystonea regia</i>	19.3	30	10	Poor	Remove	Remove	thin, stunted, nutritional deficiencies
70	Royal Palm	<i>Roystonea regia</i>	20.4	40	16	Good	Retain or Relocate	Relocate	
71	Royal Palm	<i>Roystonea regia</i>	12.6	40	14	Fair-Poor	Remove	Remove	double with #20 - girdled trunk
72	Royal Palm	<i>Roystonea regia</i>	15.3	25	12	Fair	Retain, Remove, or Relocate	Remove	top half of trunk thin
73	Royal Palm	<i>Roystonea regia</i>	17.7	25	12	Fair-Poor	Retain or Remove	Remove	thin and chlorotic
74	Royal Palm	<i>Roystonea regia</i>	19.7	25	12	Fair-Good	Retain, Remove, or Relocate	Relocate	top half of trunk thin
75	Royal Palm	<i>Roystonea regia</i>	20	25	14	Good	Retain or Relocate	Relocate	
76	Royal Palm	<i>Roystonea regia</i>	12.7	30	14	Fair-Good	Retain or Relocate	Relocate	double trunk with #32 - some trunk irregularities
77	Royal Palm	<i>Roystonea regia</i>	14	28	16	Good	Retain or Relocate	Relocate	trunk a little thin
78	Royal Palm	<i>Roystonea regia</i>	18.6	22	14	Fair	Retain, Remove, or Relocate	Remove	top half of trunk thin
79	Royal Palm	<i>Roystonea regia</i>	12	40	16	Fair-Good	Retain, Remove, or Relocate	Relocate	trunk irregular
80	Royal Palm	<i>Roystonea regia</i>	20.1	45	14	Fair-Good	Retain, Remove, or Relocate	Relocate	top half of trunk thin
81	Royal Palm	<i>Roystonea regia</i>	12.4	40	14	Fair-Good	Retain, Remove, or Relocate	Relocate	trunk thin at top
82	Royal Palm	<i>Roystonea regia</i>	15.1	50	14	Fair-Good	Retain, Remove, or Relocate	Relocate	trunk thin at top
83	Cassia	<i>Cassia spp.</i>	12.1	30	20	Good	Retain or Relocate	Remove	
84	Thatch Palm	<i>Thrinax radiata</i>	3.8	20	10	Good	Retain or Relocate	Remove	smaller than minimum size requirements for permitting or mitigation; native species
85	Thatch Palm	<i>Thrinax radiata</i>	3.3	25	10	Good	Retain or Relocate	Remove	smaller than minimum size requirements for permitting or mitigation; native species
86	Thatch Palm	<i>Thrinax radiata</i>	4.1	25	10	Good	Retain or Relocate	Remove	smaller than minimum size requirements for permitting or mitigation; native species
87	Thatch Palm	<i>Thrinax radiata</i>	3.7	18	10	Good	Retain or Relocate	Remove	smaller than minimum size requirements for permitting or mitigation; native species
88	Thatch Palm	<i>Thrinax radiata</i>	3.9	25	10	Good	Retain or Relocate	Remove	smaller than minimum size requirements for permitting or mitigation; native species
89	Thatch Palm	<i>Thrinax radiata</i>	4.2	12	10	Good	Retain or Relocate	Remove	smaller than minimum size requirements for permitting or mitigation; native species
90	Thatch Palm	<i>Thrinax radiata</i>	3.7	20	10	Good	Retain or Relocate	Remove	smaller than minimum size requirements for permitting or mitigation; native species
91	Thatch Palm	<i>Thrinax radiata</i>	3.9	25	10	Good	Retain or Relocate	Remove	smaller than minimum size requirements for permitting or mitigation; native species
92	Thatch Palm	<i>Thrinax radiata</i>	4.2	12	10	Good	Retain or Relocate	Remove	smaller than minimum size requirements for permitting or mitigation; native species
93	Thatch Palm	<i>Thrinax radiata</i>	3.8	20	10	Good	Retain or Relocate	Remove	smaller than minimum size requirements for permitting or mitigation; native species
94	Brazilian Beautyleaf	<i>Calophyllum brasiliense</i>	7.2	12	12	Good	Retain or Remove	Remove	Hedge; exempt from permitting and mitigation
95	Brazilian Beautyleaf	<i>Calophyllum brasiliense</i>	7.5	12	12	Good	Retain or Remove	Remove	Hedge; exempt from permitting and mitigation
96	Brazilian Beautyleaf	<i>Calophyllum brasiliense</i>	5	12	12	Good	Retain or Remove	Remove	Hedge; exempt from permitting and mitigation
97	Brazilian Beautyleaf	<i>Calophyllum brasiliense</i>	7.5	12	12	Good	Retain or Remove	Remove	Hedge; exempt from permitting and mitigation
98	Brazilian Beautyleaf	<i>Calophyllum brasiliense</i>	4.9	12	12	Good	Retain or Remove	Remove	Hedge; exempt from permitting and mitigation
99	Brazilian Beautyleaf	<i>Calophyllum brasiliense</i>	6+4+3+4	12	12	Good	Retain or Remove	Remove	Hedge; exempt from permitting and mitigation
100	Brazilian Beautyleaf	<i>Calophyllum brasiliense</i>	8	12	12	Good	Retain or Remove	Remove	Hedge; exempt from permitting and mitigation
101	Brazilian Beautyleaf	<i>Calophyllum brasiliense</i>	5.8	12	12	Good	Retain or Remove	Remove	Hedge; exempt from permitting and mitigation
102	Brazilian Beautyleaf	<i>Calophyllum brasiliense</i>	6	12	12	Good	Retain or Remove	Remove	Hedge; exempt from permitting and mitigation
103	Council Tree	<i>Ficus altissima</i>	app 70	50	60	Good	Retain	Remain	on wall - prohibited species
104	Brazilian Beautyleaf	<i>Calophyllum brasiliense</i>	5.8	12	6	Fair	Retain or Relocate	Remove	Hedge; exempt from permitting and mitigation

No Permitting or Mitigation Required						Remain
Specimen Tree						Relocate
Prohibited Species						Remove



PRIVATE RESIDENCE
5800 North Bay Road,
Miami Beach, FL 33140

TREE DISPOSITION CHART



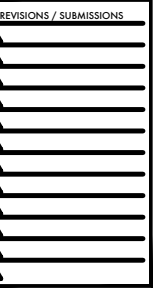
FERNANDO WONG
OUTDOOR LIVING DESIGN

DRAWN BY: JN
CHECKED BY: FW
DATE: JULY 2, 2021
SCALE:

TD-102

105	Brazilian Beautyleaf	<i>Calophyllum brasiliense</i>	3.8	12	6	Good	Remove	Remove	Hedge; exempt from permitting and mitigation
106	Brazilian Beautyleaf	<i>Calophyllum brasiliense</i>	5.1	12	6	Fair	Remove	Remove	sig. trunk wound; hedge; exempt from permitting and mitigation
107	Brazilian Beautyleaf	<i>Calophyllum brasiliense</i>	6.5	15	12	Fair	Retain or Remove	Remove	Hedge; exempt from permitting and mitigation
108	Brazilian Beautyleaf	<i>Calophyllum brasiliense</i>	6	12	6	Fair	Remove	Remove	Hedge; exempt from permitting and mitigation
109	Brazilian Beautyleaf	<i>Calophyllum brasiliense</i>	8	12	10	Good	Retain or Relocate	Remove	Hedge; exempt from permitting and mitigation
110	Brazilian Beautyleaf	<i>Calophyllum brasiliense</i>	7.4	12	12	Good	Remove	Remove	Hedge; exempt from permitting and mitigation
111	Brazilian Beautyleaf	<i>Calophyllum brasiliense</i>	9.3	15	12	Good	Retain or Remove	Remove	Hedge; exempt from permitting and mitigation
112	Brazilian Beautyleaf	<i>Calophyllum brasiliense</i>	6.5	15	12	Good	Remove	Remove	Hedge; exempt from permitting and mitigation
113	Indian Laurel	<i>Ficus microcarpa</i>	app 24	30	30	Fair	Retain or Remove	Remain	on wall - prohibited species
114	Brazilian Beautyleaf	<i>Calophyllum brasiliense</i>	8.4	12	12	Good	Retain or Remove	Remove	Hedge; exempt from permitting and mitigation
115	Brazilian Beautyleaf	<i>Calophyllum brasiliense</i>	7.3	12	12	Good	Retain or Remove	Remove	Hedge; exempt from permitting and mitigation
116	Brazilian Beautyleaf	<i>Calophyllum brasiliense</i>	8.2	12	12	Good	Retain or Remove	Remove	Hedge; exempt from permitting and mitigation
117	Brazilian Beautyleaf	<i>Calophyllum brasiliense</i>	8	12	12	Good	Retain or Remove	Remove	Hedge; exempt from permitting and mitigation
118	Brazilian Beautyleaf	<i>Calophyllum brasiliense</i>	6	12	12	Good	Retain or Remove	Remove	Hedge; exempt from permitting and mitigation
119	Brazilian Beautyleaf	<i>Calophyllum brasiliense</i>	5 + 4	12	12	Good	Retain or Remove	Remove	Hedge; exempt from permitting and mitigation
120	Brazilian Beautyleaf	<i>Calophyllum brasiliense</i>	5	12	12	Fair	Retain or Remove	Remove	Hedge; exempt from permitting and mitigation
121	Fiddleleaf Fig	<i>Ficus lyrata</i>	60" mass	30 OA	50 OA	Fair	Retain or Remove	Remain	on wall
122	Fiddleleaf Fig	<i>Ficus lyrata</i>						Remain	
123	Fiddleleaf Fig	<i>Ficus lyrata</i>						Remain	
124	Fiddleleaf Fig	<i>Ficus lyrata</i>						Remain	
125	Brazilian Beautyleaf	<i>Calophyllum brasiliense</i>	4.1	12	12	Fair	Retain or Remove	Remove	close to #124; Hedge; exempt from permitting and mitigation
126	Brazilian Beautyleaf	<i>Calophyllum brasiliense</i>	8	12	12	Good	Retain or Remove	Remove	Hedge; exempt from permitting and mitigation
127	Brazilian Beautyleaf	<i>Calophyllum brasiliense</i>	6	12	12	Good	Retain or Remove	Remove	Hedge; exempt from permitting and mitigation
128	Brazilian Beautyleaf	<i>Calophyllum brasiliense</i>	7	12	12	Good	Retain or Remove	Remove	Hedge; exempt from permitting and mitigation
129	Brazilian Beautyleaf	<i>Calophyllum brasiliense</i>	7.3	12	12	Good	Retain or Remove	Remove	Hedge; exempt from permitting and mitigation
130	Brazilian Beautyleaf	<i>Calophyllum brasiliense</i>	6.5	12	12	Good	Retain or Remove	Remove	Hedge; exempt from permitting and mitigation
131	Brazilian Beautyleaf	<i>Calophyllum brasiliense</i>	6.8	12	12	Good	Retain or Remove	Remove	Hedge; exempt from permitting and mitigation
132	Brazilian Beautyleaf	<i>Calophyllum brasiliense</i>	6.5	12	12	Good	Retain or Remove	Remove	Hedge; exempt from permitting and mitigation
133	Brazilian Beautyleaf	<i>Calophyllum brasiliense</i>	5.7	12	12	Good	Retain or Remove	Remove	Hedge; exempt from permitting and mitigation
134	Brazilian Beautyleaf	<i>Calophyllum brasiliense</i>	4.5	12	12	Good	Retain or Remove	Remove	Hedge; exempt from permitting and mitigation
135	Brazilian Beautyleaf	<i>Calophyllum brasiliense</i>	5	12	12	Good	Retain or Remove	Remove	Hedge; exempt from permitting and mitigation
136	Brazilian Beautyleaf	<i>Calophyllum brasiliense</i>	4	12	12	Good	Retain or Remove	Remove	Hedge; exempt from permitting and mitigation
137	Brazilian Beautyleaf	<i>Calophyllum brasiliense</i>	6.7	12	12	Good	Retain or Remove	Remove	Hedge; exempt from permitting and mitigation
138	Brazilian Beautyleaf	<i>Calophyllum brasiliense</i>	4.7	12	12	Good	Retain or Remove	Remove	Hedge; exempt from permitting and mitigation
139	Brazilian Beautyleaf	<i>Calophyllum brasiliense</i>	5	12	12	Good	Retain or Remove	Remove	Hedge; exempt from permitting and mitigation
140	Strangler Fig	<i>Ficus aurea</i>	7.5+8.3+8+ 6.5+6+6.7	25	25	Fair-Poor	Retain or Remove	Remove	prev. relocated; storm damage - broken leaders and branches
141	Strangler Fig	<i>Ficus aurea</i>	4.8+4.2+7+ 4.7+9@3.5	25	20	Fair-Good	Retain, Remove, or Relocate	Remove	prev. relocated
142	Strangler Fig	<i>Ficus aurea</i>	43	30	36	Good	Retain or Relocate	Remove	prev. relocated
143	Strangler Fig	<i>Ficus aurea</i>	60	25	25	Poor	Remove	Remove	old storm & pruning damage; sig. wounds, decay. Active beehive.
144	Strangler Fig	<i>Ficus aurea</i>	11.5+7.7	25	25	Fair	Retain or Remove	Remove	prev. relocated; small, sparse, poor structure
145	Strangler Fig	<i>Ficus aurea</i>	7+7+10.8+ 4.9	25	25	Good	Retain, Remove, or Relocate	Remove	prev. relocated
146	Brazilian Beautyleaf	<i>Calophyllum brasiliense</i>	8.8	12	12	Good	Retain or Remove	Remove	Hedge; exempt from permitting and mitigation
147	Brazilian Beautyleaf	<i>Calophyllum brasiliense</i>	4.2	15	12	Fair	Retain or Remove	Remove	Hedge; exempt from permitting and mitigation
148	Council Tree	<i>Ficus altissima</i>	12 N/A	N/A	Fair	Retain	Remain	Remain	aerial root of #103; prohibited species
149	Brazilian Beautyleaf	<i>Calophyllum brasiliense</i>	2.5	12	8	Good	Retain or Remove	Remove	Hedge; exempt from permitting and mitigation
150	Brazilian Beautyleaf	<i>Calophyllum brasiliense</i>	3	12	8	Good	Retain or Remove	Remove	Hedge; exempt from permitting and mitigation
151	Christmas Palm	<i>Adonidia merillii</i>	5.9	18	10	Good	Retain, Remove, or Relocate	Remove	
152	Seagrape	<i>Coccoloba uvifera</i>	4.7+3.3+4.4	20	15	Fair-Poor	Retain or Remove	Remove	shade stress
153	Council Tree	<i>Ficus altissima</i>	36	40	40	Fair-Good	Retain or Remove	Remain	on wall, canopy over adjacent property; prohibited species
154	Seagrape	<i>Coccoloba uvifera</i>	3+3+2	15	15	Fair-Poor	Retain or Remove	Remove	shade stress
155	Seagrape	<i>Coccoloba uvifera</i>	2.5+3	15	15	Fair-Poor	Retain or Remove	Remove	shade stress
156	Seagrape	<i>Coccoloba uvifera</i>	3.8+3.2	15	15	Fair-Poor	Retain or Remove	Remove	shade stress
157	Seagrape	<i>Coccoloba uvifera</i>	4.5+4.5+3+2	15	15	Fair-Poor	Retain or Remove	Remove	shade stress

	No Permitting or Mitigation Required							Remain	
	Specimen Tree							Relocate	
	Prohibited Species							Remove	



PRIVATE RESIDENCE
5800 North Bay Road,
Miami Beach, FL 33140

TREE DISPOSITION CHART

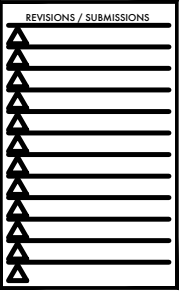


FERNANDO WONG
OUTDOOR LIVING DESIGN

DRAWN BY: JN
CHECKED BY: FW
DATE: JULY 2, 2021
SCALE:

158	Seagrape	<i>Coccoloba uvifera</i>	4.2+2+3	15	15	Fair-Poor	Retain or Remove	Remove	shade stress
159	Coconut Palm	<i>Cocos nucifera</i>	7.4	25	10	Fair-Good	Retain, Remove, or Relocate	Relocate	little thin
160	Coconut Palm	<i>Cocos nucifera</i>	7	25	12	Fair-Good	Retain, Remove, or Relocate	Relocate	little thin
161	Coconut Palm	<i>Cocos nucifera</i>	12.2	50	14	Fair-Good	Retain, Remove, or Relocate	Relocate	spike wounds
162	Coconut Palm	<i>Cocos nucifera</i>	12.2	50	16	Fair	Retain, Remove, or Relocate	Relocate	trunk wounds
163	Coconut Palm	<i>Cocos nucifera</i>	11.5	50	16	Fair-Good	Retain, Remove, or Relocate	Relocate	little thin at top; spike wounds
164	Coconut Palm	<i>Cocos nucifera</i>	8	30	112	Good	Retain, Remove, or Relocate	Relocate	
165	Coconut Palm	<i>Cocos nucifera</i>	7.9	30	12	Fair	Retain, Remove, or Relocate	Relocate	Golden Malayan - woodpecker holes, few wounds
166	Coconut Palm	<i>Cocos nucifera</i>	10.1	40	12	Fair-Good	Retain, Remove, or Relocate	Relocate	little thin, few wounds
167	Coconut Palm	<i>Cocos nucifera</i>	10.5	50	14	Good	Retain, Remove, or Relocate	Relocate	few small wounds
168	Coconut Palm	<i>Cocos nucifera</i>	9.7	40	14	Fair-Good	Retain, Remove, or Relocate	Relocate	spike wounds
169	Coconut Palm	<i>Cocos nucifera</i>	12	35	16	Good	Retain, Remove, or Relocate	Relocate	
170	Coconut Palm	<i>Cocos nucifera</i>	11.1	40	16	Fair-Good	Retain, Remove, or Relocate	Relocate	spike wounds, few other small wounds
171	Coconut Palm	<i>Cocos nucifera</i>	9.9	30	16	Good	Retain, Remove, or Relocate	Remove	few small wounds
172	Coconut Palm	<i>Cocos nucifera</i>	9.3	30	14	Good	Retain, Remove, or Relocate	Relocate	
173	Coconut Palm	<i>Cocos nucifera</i>	10.1	30	18	Good	Retain, Remove, or Relocate	Relocate	
174	Coconut Palm	<i>Cocos nucifera</i>	10.9	35	14	Good	Retain, Remove, or Relocate	Remove	trunk wound app 25' up
175	Coconut Palm	<i>Cocos nucifera</i>	12.2	40	16	Good	Retain, Remove, or Relocate	Relocate	curved trunk; few wounds
176	Coconut Palm	<i>Cocos nucifera</i>	12.2	22	16	Good	Retain, Remove, or Relocate	Relocate	trunk grew over Ficus root
177	Coconut Palm	<i>Cocos nucifera</i>	8.5	25	12	Good	Retain, Remove, or Relocate	Relocate	
178	Coconut Palm	<i>Cocos nucifera</i>	10.5	30	16	Fair-Good	Retain, Remove, or Relocate	Remove	spike wounds
179	Coconut Palm	<i>Cocos nucifera</i>	11.7	40	16	Fair-Good	Retain, Remove, or Relocate	Relocate	
180	Coconut Palm	<i>Cocos nucifera</i>	11.7	30	16	Fair-Good	Retain, Remove, or Relocate	Relocate	
181	Coconut Palm	<i>Cocos nucifera</i>	10.5	25	16	Fair-Good	Retain, Remove, or Relocate	Relocate	
182	Christmas Palm	<i>Adonidia merrillii</i>	4.9	22	10	Fair-Good	Retain, Remove, or Relocate	Remove	little thin; smaller than minimum size requirements for permitting or mitigation
183	Christmas Palm	<i>Adonidia merrillii</i>	5.6	30	10	Fair-Good	Retain, Remove, or Relocate	Remove	little thin; smaller than minimum size requirements for permitting or mitigation
184	Christmas Palm	<i>Adonidia merrillii</i>	4.7	30	10	Fair-Good	Retain, Remove, or Relocate	Remove	little thin; smaller than minimum size requirements for permitting or mitigation
185	Christmas Palm	<i>Adonidia merrillii</i>	5	30	10	Fair-Good	Retain, Remove, or Relocate	Remove	little thin; smaller than minimum size requirements for permitting or mitigation
186	Christmas Palm	<i>Adonidia merrillii</i>	4.5	30	10	Fair-Good	Retain, Remove, or Relocate	Remove	little thin; smaller than minimum size requirements for permitting or mitigation
187	Christmas Palm	<i>Adonidia merrillii</i>	5.4	30	10	Fair-Good	Retain, Remove, or Relocate	Remove	little thin; smaller than minimum size requirements for permitting or mitigation
188	Christmas Palm	<i>Adonidia merrillii</i>	4.2	20	10	Good	Retain, Remove, or Relocate	Remove	smaller than minimum size requirements for permitting or mitigation
189	Christmas Palm	<i>Adonidia merrillii</i>	4.7	30	10	Fair-Good	Retain, Remove, or Relocate	Remove	little thin; smaller than minimum size requirements for permitting or mitigation
190	Christmas Palm	<i>Adonidia merrillii</i>	5.1	35	10	Fair-Good	Retain, Remove, or Relocate	Remove	little thin; smaller than minimum size requirements for permitting or mitigation
191	Christmas Palm	<i>Adonidia merrillii</i>	3.6	16	10	Good	Retain, Remove, or Relocate	Remove	smaller than minimum size requirements for permitting or mitigation
192	Christmas Palm	<i>Adonidia merrillii</i>	4.3	25	10	Good	Retain, Remove, or Relocate	Remove	smaller than minimum size requirements for permitting or mitigation
193	Christmas Palm	<i>Adonidia merrillii</i>	3.7	25	10	Good	Retain, Remove, or Relocate	Remove	smaller than minimum size requirements for permitting or mitigation
194	Indian Laurel	<i>Ficus microcarpa</i>	40	40	30	Fair-Good	Retain or Remove	Remain	on wall; prohibited species
195	Traveler's Tree	<i>Ravenala madagascariensis</i>	8.7	15	10	Fair	Retain, Remove, or Relocate	Remove	close to wall
196	Traveler's Tree	<i>Ravenala madagascariensis</i>	6.6	16	12	Good	Retain, Remove, or Relocate	Remove	close to wall
197	Traveler's Tree	<i>Ravenala madagascariensis</i>	10.8	25	12	Good	Retain, Remove, or Relocate	Remove	close to wall
198	Traveler's Tree	<i>Ravenala madagascariensis</i>	11.4	25	12	Good	Retain, Remove, or Relocate	Remove	close to wall
199	Traveler's Tree	<i>Ravenala madagascariensis</i>	11.5	25	12	Good	Retain, Remove, or Relocate	Remove	close to wall
200	Traveler's Tree	<i>Ravenala madagascariensis</i>	11.8	25	15	Good	Retain, Remove, or Relocate	Remove	close to wall
201	Traveler's Tree	<i>Ravenala madagascariensis</i>	11.9	25	12	Good	Retain, Remove, or Relocate	Remove	close to wall
202	Traveler's Tree	<i>Ravenala madagascariensis</i>	10.5	30	12	Good	Retain, Remove, or Relocate	Remove	close to wall
203	Traveler's Tree	<i>Ravenala madagascariensis</i>	9.5	25	12	Good	Retain, Remove, or Relocate	Remove	close to wall
204	Traveler's Tree	<i>Ravenala madagascariensis</i>	9.6	18	10	Good	Retain, Remove, or Relocate	Remove	close to wall
205	Traveler's Tree	<i>Ravenala madagascariensis</i>	8.5	20	12	Good	Retain, Remove, or Relocate	Remove	close to wall
206	Traveler's Tree	<i>Ravenala madagascariensis</i>	11.5	20	12	Good	Retain, Remove, or Relocate	Remove	close to wall
207	Traveler's Tree	<i>Ravenala madagascariensis</i>	12	25	10	Good	Retain, Remove, or Relocate	Remove	close to wall
208	Christmas Palm	<i>Adonidia merrillii</i>	4.7+5.5+5.4	25 OA	15	Good	Retain, Remove, or Relocate	Remove	three separate palms grown as triple; each smaller than required for permtting & mitigation
209	Christmas Palm	<i>Adonidia merrillii</i>	4.1+5.8+5.1	25 OA	15	Good	Retain, Remove, or Relocate	Remove	three separate palms grown as triple; 2 smaller than required for permitting & mitigation
210	Christmas Palm	<i>Adonidia merrillii</i>	4.6	25	6	Fair	Retain, Remove, or Relocate	Remove	close to wall; smaller than minimum size requirements for permitting or mitigation
211	Christmas Palm	<i>Adonidia merrillii</i>	5.6	25	8	Good	Retain, Remove, or Relocate	Remove	close to wall
212	Traveler's Tree	<i>Ravenala madagascariensis</i>	12.2	20	12	Good	Retain, Remove, or Relocate	Remove	close to wall
213	Traveler's Tree	<i>Ravenala madagascariensis</i>	12.7	18	12	Good	Retain, Remove, or Relocate	Remove	close to wall

No Permitting or Mitigation Required								Remain
Specimen Tree								Relocate
Prohibited Species								Remove



PRIVATE RESIDENCE
5800 North Bay Road,
Miami Beach, FL 33140

TREE DISPOSITION CHART

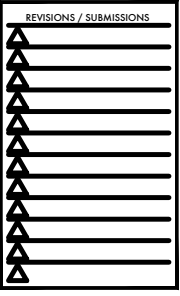


FERNANDO WONG
OUTDOOR LIVING DESIGN

DRAWN BY: JN
CHECKED BY: FW
DATE: JULY 2, 2021
SCALE:

214	Traveler's Tree	<i>Ravenala madagascariensis</i>	8	20	6	Fair-Poor	Retain or Remove	Remove	wrapped by root of #194
215	Queensland Umbrella	<i>Schefflera actinophylla</i>	13+5+6+9	20	25	Fair-Good	Remove	Remove	prohibited species
216	Senegal Date Palm	<i>Phoenix reclinata</i>	4+4+5+5	20	20	Good	Retain, Remove, or Relocate	Remove	
217	Royal Palm	<i>Roystonea regia</i>	18.8	40	10	Fair-Poor	Remove	Remove	sig. trunk wound; pruned for line clearing
218	Royal Palm	<i>Roystonea regia</i>	17.2	50	16	Good	Retain or Relocate	Remove	
219	Royal Palm	<i>Roystonea regia</i>	15.4	50	16	Good	Retain or Relocate	Remove	bent head
220	Senegal Date Palm	<i>Phoenix reclinata</i>	7	18	16	Good	Retain, Remove, or Relocate	Remove	
221	Senegal Date Palm	<i>Phoenix reclinata</i>	7.2	25 OA	25 OA	Good	Retain, Remove, or Relocate	Remove	#221, 222, 223 same clustering palm
222	Senegal Date Palm	<i>Phoenix reclinata</i>	5.7			Good	Retain, Remove, or Relocate	Remove	
223	Senegal Date Palm	<i>Phoenix reclinata</i>	5			Good	Retain, Remove, or Relocate	Remove	
224	Senegal Date Palm	<i>Phoenix reclinata</i>	5.5	25 OA	25 OA	Good	Retain, Remove, or Relocate	Remove	#224, 225, 226, 227 same clustering palm
225	Senegal Date Palm	<i>Phoenix reclinata</i>	5.5			Good	Retain, Remove, or Relocate	Remove	
226	Senegal Date Palm	<i>Phoenix reclinata</i>	6			Good	Retain, Remove, or Relocate	Remove	
227	Senegal Date Palm	<i>Phoenix reclinata</i>	6			Good	Retain, Remove, or Relocate	Remove	
228	Royal Palm	<i>Roystonea regia</i>	17	40	16	Good	Retain or Relocate	Remove	
229	Royal Palm	<i>Roystonea regia</i>	17.9	50	16	Good	Retain or Relocate	Remove	
230	Royal Palm	<i>Roystonea regia</i>	16.7	50	16	Fair	Retain, Remove, or Relocate	Remove	spike wounds, bent head
231	Royal Palm	<i>Roystonea regia</i>	15.6	50	18	Good	Retain or Relocate	Remove	
232	Royal Palm	<i>Roystonea regia</i>	20	45	10	Fair-Poor	Retain or Remove	Remove	top crooked, trunk thin, head stunted
233	Royal Palm	<i>Roystonea regia</i>	14.3	50	16	Good	Retain or Relocate	Remove	
234	Royal Palm	<i>Roystonea regia</i>	18	50	18	Good	Retain or Relocate	Remove	
235	Senegal Date Palm	<i>Phoenix reclinata</i>	6.6	20 OA	20 OA	Good	Retain, Remove, or Relocate	Remove	#235, 236, 237, 238, 239, 240 same clustering palm
236	Senegal Date Palm	<i>Phoenix reclinata</i>	6.7	20 OA	20 OA	Good	Retain, Remove, or Relocate	Remove	#235, 236, 237, 238, 239, 240 same clustering palm
237	Senegal Date Palm	<i>Phoenix reclinata</i>	8	20 OA	20 OA	Good	Retain, Remove, or Relocate	Remove	#235, 236, 237, 238, 239, 240 same clustering palm
238	Senegal Date Palm	<i>Phoenix reclinata</i>	6.4	20 OA	20 OA	Good	Retain, Remove, or Relocate	Remove	#235, 236, 237, 238, 239, 240 same clustering palm
239	Senegal Date Palm	<i>Phoenix reclinata</i>	7	20 OA	20 OA	Good	Retain, Remove, or Relocate	Remove	#235, 236, 237, 238, 239, 240 same clustering palm
240	Senegal Date Palm	<i>Phoenix reclinata</i>	5.5	20 OA	20 OA	Good	Retain, Remove, or Relocate	Remove	#235, 236, 237, 238, 239, 240 same clustering palm
241	Senegal Date Palm	<i>Phoenix reclinata</i>	5.2	20 OA	15 OA	Good	Retain, Remove, or Relocate	Remove	#241, 242, 244, 245 same clustering palm
242	Senegal Date Palm	<i>Phoenix reclinata</i>	5.1	20 OA	15 OA	Good	Retain, Remove, or Relocate	Remove	#241, 242, 244, 245 same clustering palm
243	Senegal Date Palm	<i>Phoenix reclinata</i>	6.2	20 OA	20 OA	Good	Retain, Remove, or Relocate	Remove	#243 and #246 same clustering palm
244	Senegal Date Palm	<i>Phoenix reclinata</i>	7.5	20 OA	15 OA	Good	Retain, Remove, or Relocate	Remove	#241, 242, 244, 245, same clustering palm
245	Senegal Date Palm	<i>Phoenix reclinata</i>	6.2	20 OA	15 OA	Good	Retain, Remove, or Relocate	Remove	#241, 242, 245, 245, same clustering palm
246	Senegal Date Palm	<i>Phoenix reclinata</i>	6	20 OA	20 OA	Good	Retain or Relocate	Remove	#243 and #246 same clustering palm
247	Senegal Date Palm	<i>Phoenix reclinata</i>	7@3.5-5.5	20 OA	20 OA	Good	Retain, Remove, or Relocate	Remove	clustering palm
248	Senegal Date Palm	<i>Phoenix reclinata</i>	5@4-5	25 OA	20 OA	Good	Retain, Remove, or Relocate	Remove	clustering palm
249	Senegal Date Palm	<i>Phoenix reclinata</i>	6 @ 4-7	25 OA	20 OA	Good	Retain, Remove, or Relocate	Remove	clustering palm
250	Senegal Date Palm	<i>Phoenix reclinata</i>	6@5-6	30 OA	20 OA	Good	Retain, Remove, or Relocate	Remove	clustering palm
251	Senegal Date Palm	<i>Phoenix reclinata</i>	6.5	25 OA	12 OA	Good	Retain, Remove, or Relocate	Remove	#251 and #252 same clustering palm
252	Senegal Date Palm	<i>Phoenix reclinata</i>	6	25 OA	12 OA	Good	Retain, Remove, or Relocate	Remove	#251 and #252 same clustering palm
253	Senegal Date Palm	<i>Phoenix reclinata</i>	6.7	25 OA	20 OA	Good	Retain, Remove, or Relocate	Remove	#253, 254, 255, 256, 257 same clustering palm
254	Senegal Date Palm	<i>Phoenix reclinata</i>	5.8	25 OA	20 OA	Good	Retain, Remove, or Relocate	Remove	#253, 254, 255, 256, 257 same clustering palm
255	Senegal Date Palm	<i>Phoenix reclinata</i>	7.5	25 OA	20 OA	Poor	Remove	Remove	#253, 254, 255, 256, 257 same clustering palm; this one stem thin and damaged
256	Senegal Date Palm	<i>Phoenix reclinata</i>	6.7	25 OA	20 OA	Good	Retain, Remove, or Relocate	Remove	#253, 254, 255, 256, 257 same clustering palm
257	Senegal Date Palm	<i>Phoenix reclinata</i>	6.2	25 OA	20 OA	Good	Retain, Remove, or Relocate	Remove	#253, 254, 255, 256, 257 same clustering palm
258	Senegal Date Palm	<i>Phoenix reclinata</i>	6.6	25 OA	10 OA	Good	Retain, Remove, or Relocate	Remove	#258, 259, 260 same clustering palm
259	Senegal Date Palm	<i>Phoenix reclinata</i>	5.9	25 OA	10 OA	Good	Retain, Remove, or Relocate	Remove	#258, 259, 260 same clustering palm
260	Senegal Date Palm	<i>Phoenix reclinata</i>	6.2	25 OA	10 OA	Good	Retain, Remove, or Relocate	Remove	#258, 259, 260 same clustering palm
261	Senegal Date Palm	<i>Phoenix reclinata</i>	5.4	25	10	Fair	Retain, Remove, or Relocate	Remove	smaller than minimum size requirements for permitting or mitigation
262	Senegal Date Palm	<i>Phoenix reclinata</i>	7.3	18	8	Fair	Retain, Remove, or Relocate	Remove	thin
263	Senegal Date Palm	<i>Phoenix reclinata</i>	6.5	15	8	Fair	Retain, Remove, or Relocate	Remove	thin
264	Senegal Date Palm	<i>Phoenix reclinata</i>	12	25	15	Good	Retain, Remove, or Relocate	Remove	
265	Senegal Date Palm	<i>Phoenix reclinata</i>	11.2	20	15	Good	Retain, Remove, or Relocate	Remove	
266	Senegal Date Palm	<i>Phoenix reclinata</i>	5.8	15	12	Good	Retain, Remove, or Relocate	Remove	
267	Senegal Date Palm	<i>Phoenix reclinata</i>	4.5	12	10	Fair	Retain, Remove, or Relocate	Remove	smaller than minimum size requirements for permitting or mitigation
268	Senegal Date Palm	<i>Phoenix reclinata</i>	5.7	30 OA	30 OA	Good	Retain, Remove, or Relocate	Remove	#268, 269, 270, 271, 272, 273, 274, 275 same clustering palm
269	Senegal Date Palm	<i>Phoenix reclinata</i>	6.8	30 OA	30 OA	Good	Retain, Remove, or Relocate	Remove	#268, 269, 270, 271, 272, 273, 274, 275 same clustering palm

No Permitting or Mitigation Required							Remain
Specimen Tree							Relocate
Prohibited Species							Remove



PRIVATE RESIDENCE
5800 North Bay Road,
Miami Beach, FL 33140

TREE DISPOSITION CHART



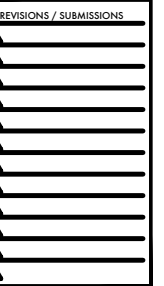
FERNANDO WONG
OUTDOOR LIVING DESIGN

DRAWN BY: JN
CHECKED BY: FW
DATE: JULY 2, 2021
SCALE:

TD-105

Table with columns for ID, Species, Height, DBH, Condition, Recommendation, and Notes. Includes rows for Senegal Date Palm, Brazilian Beautyleaf, and Solitaire/Alexander Palm.

Legend table with three rows: No Permitting or Mitigation Required (Remain), Specimen Tree (Relocate), and Prohibited Species (Remove).

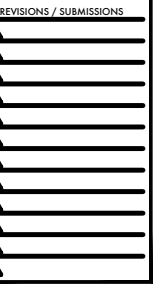


PRIVATE RESIDENCE
5800 North Bay Road,
Miami Beach, FL 33140
TREE DISPOSITION CHART



FERNANDO WONG
OUTDOOR LIVING DESIGN

DRAWN BY: JN
CHECKED BY: FW
DATE: JULY 2, 2021
SCALE:



ID	Common Name	Scientific Name	DBH	Height	Condition	Notes	Disposition	Remarks	
382	Senegal Date Palm	<i>Phoenix reclinata</i>	5.4	30 OA	30 OA	Good	Retain, Remove, or Relocate	Remove	#380, 381, 382, 383 same clustering palm
383	Senegal Date Palm	<i>Phoenix reclinata</i>	5.2	30 OA	30 OA	Good	Retain, Remove, or Relocate	Remove	#380, 381, 382, 383 same clustering palm
384	Senegal Date Palm	<i>Phoenix reclinata</i>	7.8	30 OA	30 OA	Good	Retain, Remove, or Relocate	Remove	#384 and #385 same clustering palm
385	Senegal Date Palm	<i>Phoenix reclinata</i>	8	30 OA	30 OA	Good	Retain, Remove, or Relocate	Remove	#384 and #385 same clustering palm
386	Senegal Date Palm	<i>Phoenix reclinata</i>	8	30 OA	30 OA	Good	Retain, Remove, or Relocate	Remove	
387	Brazilian Beautyleaf	<i>Calophyllum brasiliense</i>	2	12	8	Good	Retain, Remove, or Relocate	Remove	Hedge; exempt from permitting and mitigation
388	Brazilian Beautyleaf	<i>Calophyllum brasiliense</i>	2.5	12	8	Good	Retain, Remove, or Relocate	Remove	Hedge; exempt from permitting and mitigation
389	Brazilian Beautyleaf	<i>Calophyllum brasiliense</i>	2.5	12	8	Good	Retain, Remove, or Relocate	Remove	Hedge; exempt from permitting and mitigation
390	Brazilian Beautyleaf	<i>Calophyllum brasiliense</i>	2	12	8	Good	Retain, Remove, or Relocate	Remove	Hedge; exempt from permitting and mitigation
391	Brazilian Beautyleaf	<i>Calophyllum brasiliense</i>	2	12	8	Good	Retain, Remove, or Relocate	Remove	Hedge; exempt from permitting and mitigation
392	Brazilian Beautyleaf	<i>Calophyllum brasiliense</i>	2	12	8	Good	Retain, Remove, or Relocate	Remove	Hedge; exempt from permitting and mitigation
393	Brazilian Beautyleaf	<i>Calophyllum brasiliense</i>	2.5	12	8	Good	Retain, Remove, or Relocate	Remove	Hedge; exempt from permitting and mitigation
394	Senegal Date Palm	<i>Phoenix reclinata</i>	4.8	20	6	Fair	Retain, Remove, or Relocate	Remove	smaller than minimum size requirements for permitting or mitigation
395	Chinese Fan Palm	<i>Livistona chinensis</i>	9.2	28	12	Good	Retain, Remove, or Relocate	Remove	
396	Chinese Fan Palm	<i>Livistona chinensis</i>	8.2	30	12	Good	Retain, Remove, or Relocate	Remove	
397	Chinese Fan Palm	<i>Livistona chinensis</i>	9.6	30	12	Good	Retain, Remove, or Relocate	Remove	
398	Chinese Fan Palm	<i>Livistona chinensis</i>	9	30	12	Good	Retain, Remove, or Relocate	Remove	
399	Chinese Fan Palm	<i>Livistona chinensis</i>	9.3	30	12	Good	Retain, Remove, or Relocate	Remove	
400	Chinese Fan Palm	<i>Livistona chinensis</i>	9.3	30	12	Good	Retain, Remove, or Relocate	Remove	
401	Chinese Fan Palm	<i>Livistona chinensis</i>	7.9	25	12	Good	Retain, Remove, or Relocate	Remove	
402	Chinese Fan Palm	<i>Livistona chinensis</i>	8.5	25	12	Fair-Good	Retain, Remove, or Relocate	Remove	trunk bent due to shade
403	Chinese Fan Palm	<i>Livistona chinensis</i>	7.9	22	12	Fair	Retain or Remove	Remove	trunk decay
404	Chinese Fan Palm	<i>Livistona chinensis</i>	7.9	25	12	Good	Retain, Remove, or Relocate	Remove	
405	Chinese Fan Palm	<i>Livistona chinensis</i>	10.8	25	12	Good	Retain, Remove, or Relocate	Remove	
406	Chinese Fan Palm	<i>Livistona chinensis</i>	7.6	30	12	Good	Retain, Remove, or Relocate	Remove	
407	Chinese Fan Palm	<i>Livistona chinensis</i>	9.8	25	12	Good	Retain, Remove, or Relocate	Remove	
408	Chinese Fan Palm	<i>Livistona chinensis</i>	8.9	30	12	Good	Retain, Remove, or Relocate	Remove	
409	Chinese Fan Palm	<i>Livistona chinensis</i>	8.2	30	12	Good	Retain, Remove, or Relocate	Remove	
410	Chinese Fan Palm	<i>Livistona chinensis</i>	8.2	30	12	Good	Retain, Remove, or Relocate	Remove	
411	Australian Tree Fern	<i>Cyathea cooperi</i>	3	10	8	Good	Retain, Remove, or Relocate	Remove	not a tree; no permitting or mitigation required
412	Australian Tree Fern	<i>Cyathea cooperi</i>	3.9	12	8	Fair-Poor	Retain or Remove	Remove	not a tree; nutritional deficiencies; no permitting or mitigation required
413	Australian Tree Fern	<i>Cyathea cooperi</i>	4.2	12	12	Fair	Retain, Remove, or Relocate	Remove	not a tree; no permitting or mitigation required
414	Solitaire/Alexander Palm	<i>Ptychosperma elegans</i>	<6	N/A	N/A	N/A	Retain, Remove, or Relocate	Remove	smaller than minimum size requirements for permitting or mitigation
415	Solitaire/Alexander Palm	<i>Ptychosperma elegans</i>	<6	N/A	N/A	N/A	Retain, Remove, or Relocate	Remove	smaller than minimum size requirements for permitting or mitigation
416	Solitaire/Alexander Palm	<i>Ptychosperma elegans</i>	<6	N/A	N/A	N/A	Retain, Remove, or Relocate	Remove	smaller than minimum size requirements for permitting or mitigation
417	Solitaire/Alexander Palm	<i>Ptychosperma elegans</i>	<6	N/A	N/A	N/A	Retain, Remove, or Relocate	Remove	smaller than minimum size requirements for permitting or mitigation
418	Solitaire/Alexander Palm	<i>Ptychosperma elegans</i>	<6	N/A	N/A	N/A	Retain, Remove, or Relocate	Remove	smaller than minimum size requirements for permitting or mitigation
419	Solitaire/Alexander Palm	<i>Ptychosperma elegans</i>	<6	N/A	N/A	N/A	Retain, Remove, or Relocate	Remove	smaller than minimum size requirements for permitting or mitigation
420	Solitaire/Alexander Palm	<i>Ptychosperma elegans</i>	<6	N/A	N/A	N/A	Retain, Remove, or Relocate	Remove	smaller than minimum size requirements for permitting or mitigation
421	Solitaire/Alexander Palm	<i>Ptychosperma elegans</i>	<6	N/A	N/A	N/A	Retain, Remove, or Relocate	Remove	smaller than minimum size requirements for permitting or mitigation
422	Solitaire/Alexander Palm	<i>Ptychosperma elegans</i>	<6	N/A	N/A	N/A	Retain, Remove, or Relocate	Remove	smaller than minimum size requirements for permitting or mitigation
423	Solitaire/Alexander Palm	<i>Ptychosperma elegans</i>	<6	N/A	N/A	N/A	Retain, Remove, or Relocate	Remove	smaller than minimum size requirements for permitting or mitigation
424	Solitaire/Alexander Palm	<i>Ptychosperma elegans</i>	<6	N/A	N/A	N/A	Retain, Remove, or Relocate	Remove	smaller than minimum size requirements for permitting or mitigation
425	Solitaire/Alexander Palm	<i>Ptychosperma elegans</i>	<6	N/A	N/A	N/A	Retain, Remove, or Relocate	Remove	smaller than minimum size requirements for permitting or mitigation
426	Solitaire/Alexander Palm	<i>Ptychosperma elegans</i>	<6	N/A	N/A	N/A	Retain, Remove, or Relocate	Remove	smaller than minimum size requirements for permitting or mitigation
427	Solitaire/Alexander Palm	<i>Ptychosperma elegans</i>	<6	N/A	N/A	N/A	Retain, Remove, or Relocate	Remove	smaller than minimum size requirements for permitting or mitigation
428	Solitaire/Alexander Palm	<i>Ptychosperma elegans</i>	<6	N/A	N/A	N/A	Retain, Remove, or Relocate	Remove	smaller than minimum size requirements for permitting or mitigation
429	Solitaire/Alexander Palm	<i>Ptychosperma elegans</i>	<6	N/A	N/A	N/A	Retain, Remove, or Relocate	Remove	smaller than minimum size requirements for permitting or mitigation
430	Solitaire/Alexander Palm	<i>Ptychosperma elegans</i>	<6	N/A	N/A	N/A	Retain, Remove, or Relocate	Remove	smaller than minimum size requirements for permitting or mitigation
431	Solitaire/Alexander Palm	<i>Ptychosperma elegans</i>	<6	N/A	N/A	N/A	Retain, Remove, or Relocate	Remove	smaller than minimum size requirements for permitting or mitigation
432	Solitaire/Alexander Palm	<i>Ptychosperma elegans</i>	<6	N/A	N/A	N/A	Retain, Remove, or Relocate	Remove	smaller than minimum size requirements for permitting or mitigation
433	Solitaire/Alexander Palm	<i>Ptychosperma elegans</i>	<6	N/A	N/A	N/A	Retain, Remove, or Relocate	Remove	smaller than minimum size requirements for permitting or mitigation
434	Solitaire/Alexander Palm	<i>Ptychosperma elegans</i>	<6	N/A	N/A	N/A	Retain, Remove, or Relocate	Remove	smaller than minimum size requirements for permitting or mitigation
435	Solitaire/Alexander Palm	<i>Ptychosperma elegans</i>	<6	N/A	N/A	N/A	Retain, Remove, or Relocate	Remove	smaller than minimum size requirements for permitting or mitigation
436	Solitaire/Alexander Palm	<i>Ptychosperma elegans</i>	<6	N/A	N/A	N/A	Retain, Remove, or Relocate	Remove	smaller than minimum size requirements for permitting or mitigation
437	Solitaire/Alexander Palm	<i>Ptychosperma elegans</i>	<6	N/A	N/A	N/A	Retain, Remove, or Relocate	Remove	smaller than minimum size requirements for permitting or mitigation

PRIVATE RESIDENCE
5800 North Bay Road,
Miami Beach, FL 33140

TREE DISPOSITION CHART



FERNANDO WONG
OUTDOOR LIVING DESIGN

DRAWN BY: JN
CHECKED BY: FW
DATE: JULY 2, 2021
SCALE:

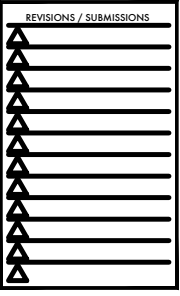
No Permitting or Mitigation Required								Remain
Specimen Tree								Relocate
Prohibited Species								Remove

Date of Site Visit: May 18, 2021

Tree Survey/Evaluation
5800 North Bay Road, Miami Beach, FL

Lisa H. Hammer, Horticultural Consultant
RCA#333, ISA-CA #SO-0758

438	Solitaire/Alexander Palm	<i>Ptychosperma elegans</i>	<6	N/A	N/A	N/A	Retain, Remove, or Relocate	Remove	smaller than minimum size requirements for permitting or mitigation
439	Solitaire/Alexander Palm	<i>Ptychosperma elegans</i>	<6	N/A	N/A	N/A	Retain, Remove, or Relocate	Remove	smaller than minimum size requirements for permitting or mitigation
440	Solitaire/Alexander Palm	<i>Ptychosperma elegans</i>	<6	N/A	N/A	N/A	Retain, Remove, or Relocate	Remove	smaller than minimum size requirements for permitting or mitigation
441	Solitaire/Alexander Palm	<i>Ptychosperma elegans</i>	<6	N/A	N/A	N/A	Retain, Remove, or Relocate	Remove	smaller than minimum size requirements for permitting or mitigation
442	Solitaire/Alexander Palm	<i>Ptychosperma elegans</i>	<6	N/A	N/A	N/A	Retain, Remove, or Relocate	Remove	smaller than minimum size requirements for permitting or mitigation
443	Christmas Palm	<i>Adonidia merrillii</i>	6	25	6	Good	Retain, Remove, or Relocate	Remove	
444	Christmas Palm	<i>Adonidia merrillii</i>	6.1	30	8	Good	Retain, Remove, or Relocate	Remove	
445	Christmas Palm	<i>Adonidia merrillii</i>	4.9	25	8	Good	Retain, Remove, or Relocate	Remove	smaller than minimum size requirements for permitting or mitigation
446	Christmas Palm	<i>Adonidia merrillii</i>	5.1	30	8	Good	Retain, Remove, or Relocate	Remove	smaller than minimum size requirements for permitting or mitigation
447	Christmas Palm	<i>Adonidia merrillii</i>	5.1	25	8	Good	Retain, Remove, or Relocate	Remove	smaller than minimum size requirements for permitting or mitigation
448	Christmas Palm	<i>Adonidia merrillii</i>	4.9	25	8	Good	Retain, Remove, or Relocate	Remove	bent trunk; smaller than minimum size requirements for permitting or mitigation
449	Christmas Palm	<i>Adonidia merrillii</i>	5	25	6	Fair-Good	Retain, Remove, or Relocate	Remove	thin, bent trunk; smaller than minimum size requirements for permitting or mitigation
450	Christmas Palm	<i>Adonidia merrillii</i>	5	30	6	Good	Retain, Remove, or Relocate	Remove	smaller than minimum size requirements for permitting or mitigation
451	Christmas Palm	<i>Adonidia merrillii</i>	5	30	8	Good	Retain, Remove, or Relocate	Remove	smaller than minimum size requirements for permitting or mitigation
452	Christmas Palm	<i>Adonidia merrillii</i>	4.8	30	8	Good	Retain, Remove, or Relocate	Remove	smaller than minimum size requirements for permitting or mitigation
453	Christmas Palm	<i>Adonidia merrillii</i>	4.4	25	8	Good	Retain, Remove, or Relocate	Remove	smaller than minimum size requirements for permitting or mitigation
454	Christmas Palm	<i>Adonidia merrillii</i>	5.7	30	8	Good	Retain, Remove, or Relocate	Remove	
455	Christmas Palm	<i>Adonidia merrillii</i>	5.3	30	8	Good	Retain, Remove, or Relocate	Remove	smaller than minimum size requirements for permitting or mitigation
456	Christmas Palm	<i>Adonidia merrillii</i>	5.3	25	6	Good	Retain, Remove, or Relocate	Remove	smaller than minimum size requirements for permitting or mitigation
457	Christmas Palm	<i>Adonidia merrillii</i>	5.6	20	6	Fair	Retain or Remove	Remove	trunk wounds
458	Christmas Palm	<i>Adonidia merrillii</i>	6.1	25	8	Good	Retain, Remove, or Relocate	Remove	
459	Christmas Palm	<i>Adonidia merrillii</i>	5.8	25	8	Good	Retain, Remove, or Relocate	Remove	
460	Christmas Palm	<i>Adonidia merrillii</i>	5.4	25	8	Good	Retain, Remove, or Relocate	Remove	smaller than minimum size requirements for permitting or mitigation
461	Christmas Palm	<i>Adonidia merrillii</i>	5.8	30	6	Fair-Good	Retain, Remove, or Relocate	Remove	thin, bent trunk
462	Christmas Palm	<i>Adonidia merrillii</i>	5	30	6	Fair-Good	Retain, Remove, or Relocate	Remove	thin trunk; smaller than minimum size requirements for permitting or mitigation
463	Christmas Palm	<i>Adonidia merrillii</i>	5.1	25	6	Fair-Good	Retain, Remove, or Relocate	Remove	thin trunk; smaller than minimum size requirements for permitting or mitigation
464	Christmas Palm	<i>Adonidia merrillii</i>	6.2	30	8	Good	Retain, Remove, or Relocate	Remove	
465	Christmas Palm	<i>Adonidia merrillii</i>	5.4	30	8	Good	Retain, Remove, or Relocate	Remove	trunk a little thin; smaller than minimum size requirements for permitting or mitigation
466	Christmas Palm	<i>Adonidia merrillii</i>	5.5	30	8	Good	Retain, Remove, or Relocate	Remove	smaller than minimum size requirements for permitting or mitigation
467	Christmas Palm	<i>Adonidia merrillii</i>	4.8	20	8	Good	Retain, Remove, or Relocate	Remove	smaller than minimum size requirements for permitting or mitigation
468	Christmas Palm	<i>Adonidia merrillii</i>	4.5	25	6	Good	Retain, Remove, or Relocate	Remove	smaller than minimum size requirements for permitting or mitigation
469	Christmas Palm	<i>Adonidia merrillii</i>	5.4	30	8	Good	Retain, Remove, or Relocate	Remove	smaller than minimum size requirements for permitting or mitigation
470	Christmas Palm	<i>Adonidia merrillii</i>	5	30	8	Good	Retain, Remove, or Relocate	Remove	smaller than minimum size requirements for permitting or mitigation
471	Christmas Palm	<i>Adonidia merrillii</i>	5.6	30	8	Good	Retain, Remove, or Relocate	Remove	
472	Christmas Palm	<i>Adonidia merrillii</i>	5.8	25	6	Good	Retain, Remove, or Relocate	Remove	
473	Christmas Palm	<i>Adonidia merrillii</i>	5.9	25	6	Good	Retain, Remove, or Relocate	Remove	
474	Christmas Palm	<i>Adonidia merrillii</i>	4.4	25	6	Good	Retain, Remove, or Relocate	Remove	smaller than minimum size requirements for permitting or mitigation
475	Christmas Palm	<i>Adonidia merrillii</i>	5.3	20	8	Good	Retain, Remove, or Relocate	Remove	smaller than minimum size requirements for permitting or mitigation
476	Christmas Palm	<i>Adonidia merrillii</i>	5.8	30	8	Good	Retain, Remove, or Relocate	Remove	
477	Christmas Palm	<i>Adonidia merrillii</i>	5.9	25	8	Good	Retain, Remove, or Relocate	Remove	
478	Christmas Palm	<i>Adonidia merrillii</i>	4.9	20	8	Good	Retain, Remove, or Relocate	Remove	smaller than minimum size requirements for permitting or mitigation
479	Christmas Palm	<i>Adonidia merrillii</i>	5.8	25	8	Good	Retain, Remove, or Relocate	Remove	
480	Christmas Palm	<i>Adonidia merrillii</i>	4.9	25	8	Good	Retain, Remove, or Relocate	Remove	smaller than minimum size requirements for permitting or mitigation
481	Christmas Palm	<i>Adonidia merrillii</i>	5.7	30	8	Good	Retain, Remove, or Relocate	Remove	
482	Christmas Palm	<i>Adonidia merrillii</i>	5.2	25	8	Good	Retain, Remove, or Relocate	Remove	smaller than minimum size requirements for permitting or mitigation
483	Christmas Palm	<i>Adonidia merrillii</i>	5.5	25	8	Good	Retain, Remove, or Relocate	Remove	smaller than minimum size requirements for permitting or mitigation
484	Christmas Palm	<i>Adonidia merrillii</i>	5	30	8	Good	Retain, Remove, or Relocate	Remove	smaller than minimum size requirements for permitting or mitigation
485	Christmas Palm	<i>Adonidia merrillii</i>	4	25	8	Good	Retain, Remove, or Relocate	Remove	smaller than minimum size requirements for permitting or mitigation
486	Christmas Palm	<i>Adonidia merrillii</i>	5.4	25	8	Good	Retain, Remove, or Relocate	Remove	smaller than minimum size requirements for permitting or mitigation
487	Christmas Palm	<i>Adonidia merrillii</i>	5.2	25	8	Good	Retain, Remove, or Relocate	Remove	smaller than minimum size requirements for permitting or mitigation
488	Christmas Palm	<i>Adonidia merrillii</i>	6	30	8	Good	Retain, Remove, or Relocate	Remove	smaller than minimum size requirements for permitting or mitigation
489	Christmas Palm	<i>Adonidia merrillii</i>	6.1	30	8	Good	Retain, Remove, or Relocate	Remove	smaller than minimum size requirements for permitting or mitigation
	No Permitting or Mitigation Required							Remain	
	Specimen Tree							Relocate	
	Prohibited Species							Remove	



PRIVATE RESIDENCE
5800 North Bay Road,
Miami Beach, FL 33140

TREE DISPOSITION CHART



FERNANDO WONG
OUTDOOR LIVING DESIGN

DRAWN BY: JN
CHECKED BY: FW
DATE: JULY 2, 2021
SCALE:

TD-109