

JULY 2, 2021  
 DRB Submittal Set  
 DRB 21-0697

# 5800 NORTH BAY ROAD

Residential  
 Miami Beach, FL

## DRAWING INDEX

### Sheet No. Sheet Title

L-100	OVERALL LANDSCAPE PLAN
L-100.1	LANDSCAPE PLAN - ZOOM IN
L-100.2	LANDSCAPE PLAN - ZOOM IN
L-100.3	LANDSCAPE PLAN - ZOOM IN
L-100.4	LANDSCAPE PLAN - ZOOM IN
L-100.5	LANDSCAPE PLAN - ROOF
L-101	PLANT LIST & LEGEND
L-102	PLANTING DETAILS
L-200	RENDERED SITE PLAN
L-201	SITE SECTION - FRONT ELEVATION
L-202	SITE SECTION - EAST ELEVATION
L-203	SITE SECTION - WEST ELEVATION

TD-100	TREE DISPOSITION PLAN
TD-100.1	TREE DISPOSITION PLAN - ZOOM IN
TD-100.2	TREE DISPOSITION PLAN - ZOOM IN
TD-100.3	TREE DISPOSITION PLAN - ZOOM IN
TD-100.4	TREE DISPOSITION PLAN - ZOOM IN
TD-101	TREE DISPOSITION CHART
TD-102	TREE DISPOSITION CHART
TD-103	TREE DISPOSITION CHART
TD-104	TREE DISPOSITION CHART
TD-105	TREE DISPOSITION CHART
TD-106	TREE DISPOSITION CHART
TD-107	TREE DISPOSITION CHART
TD-108	TREE DISPOSITION CHART
TD-109	TREE DISPOSITION CHART

REVISIONS / SUBMISSIONS	
△	
△	
△	
△	
△	
△	
△	
△	
△	
△	

**PRIVATE RESIDENCE**  
 5800 North Bay Road,  
 Miami Beach, FL 33140

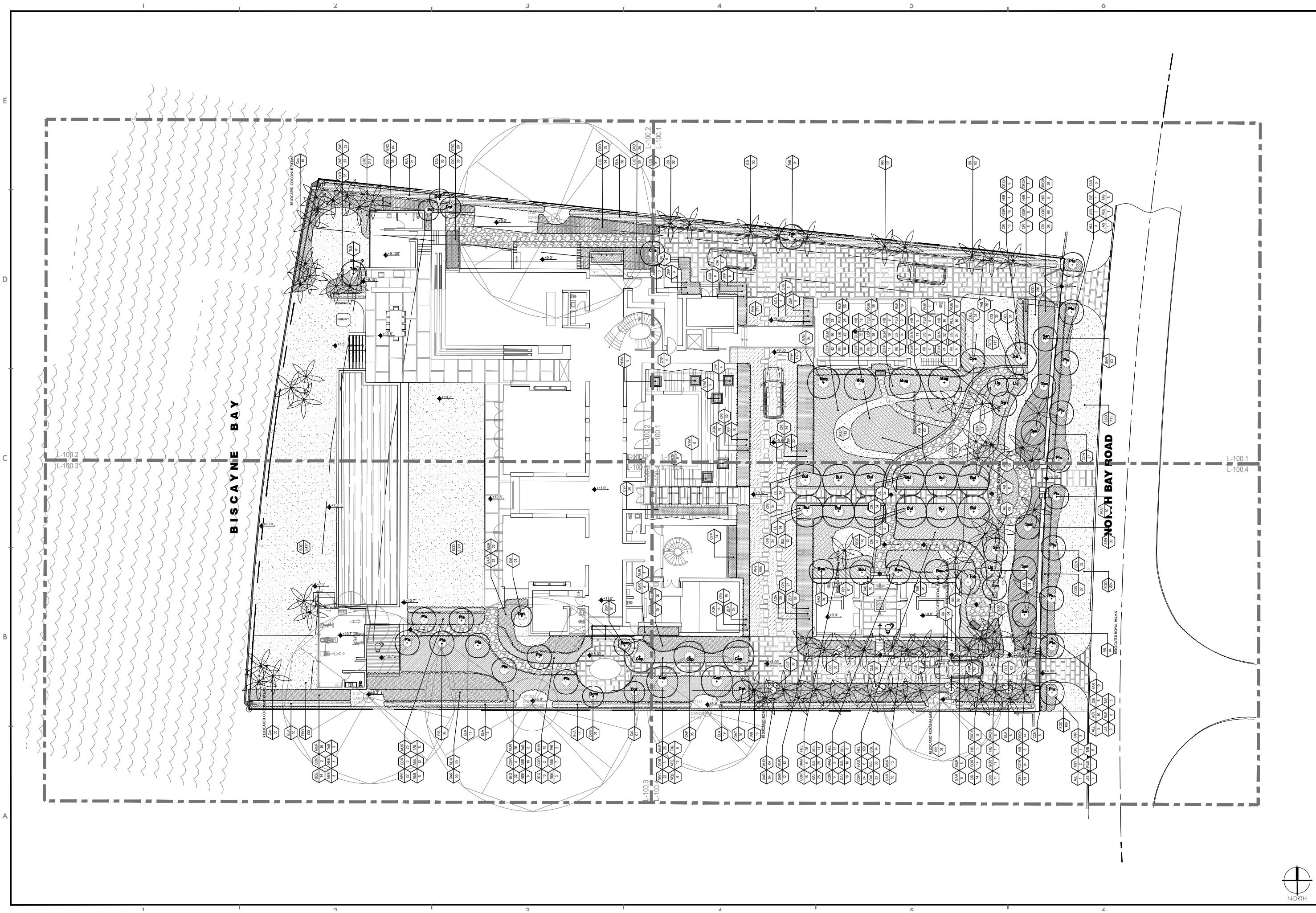
**COVER SHEET**



**FERNANDO WONG**  
 OUTDOOR LIVING DESIGN

DRAWN BY: JN  
 CHECKED BY: FW  
 DATE: JULY 2, 2021  
 SCALE:

**C-100**



REVISIONS / SUBMISSIONS	

**PRIVATE RESIDENCE**  
 5800 North Bay Road,  
 Miami Beach, FL 33140

**LANDSCAPE PLAN**

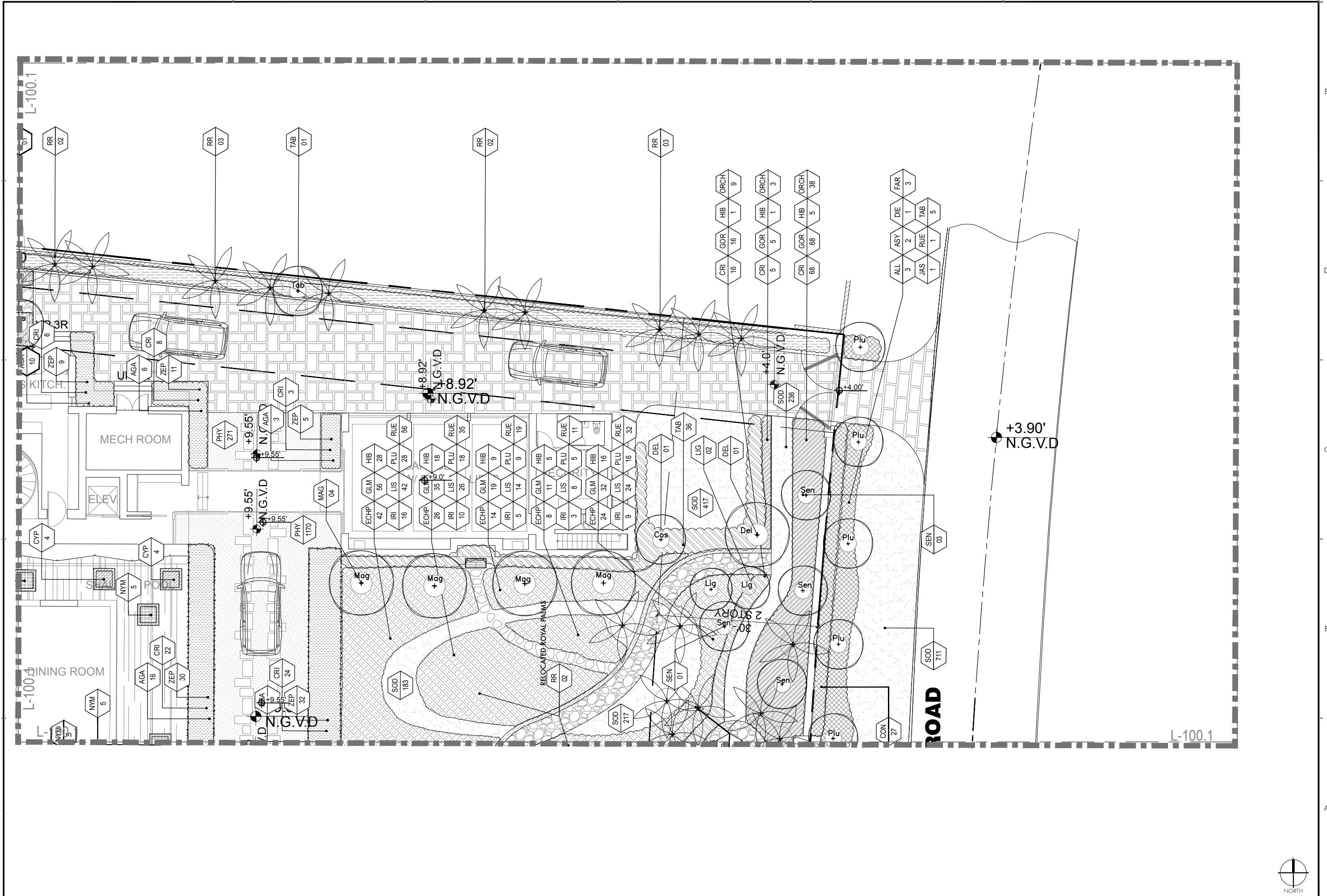


**FERNANDO WONG**  
 OUTDOOR LIVING DESIGN

DRAWN BY: JN  
 CHECKED BY: FW  
 DATE: JULY 2, 2021  
 SCALE: 1/32" = 1'-0"

**L-100**

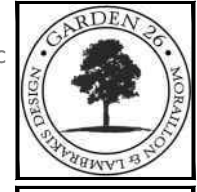




REVISIONS / SUBMISSIONS


**PRIVATE RESIDENCE**  
 5800 North Bay Road,  
 Miami Beach, FL 33140

**LANDSCAPE PLAN**  
**ZOOM IN**

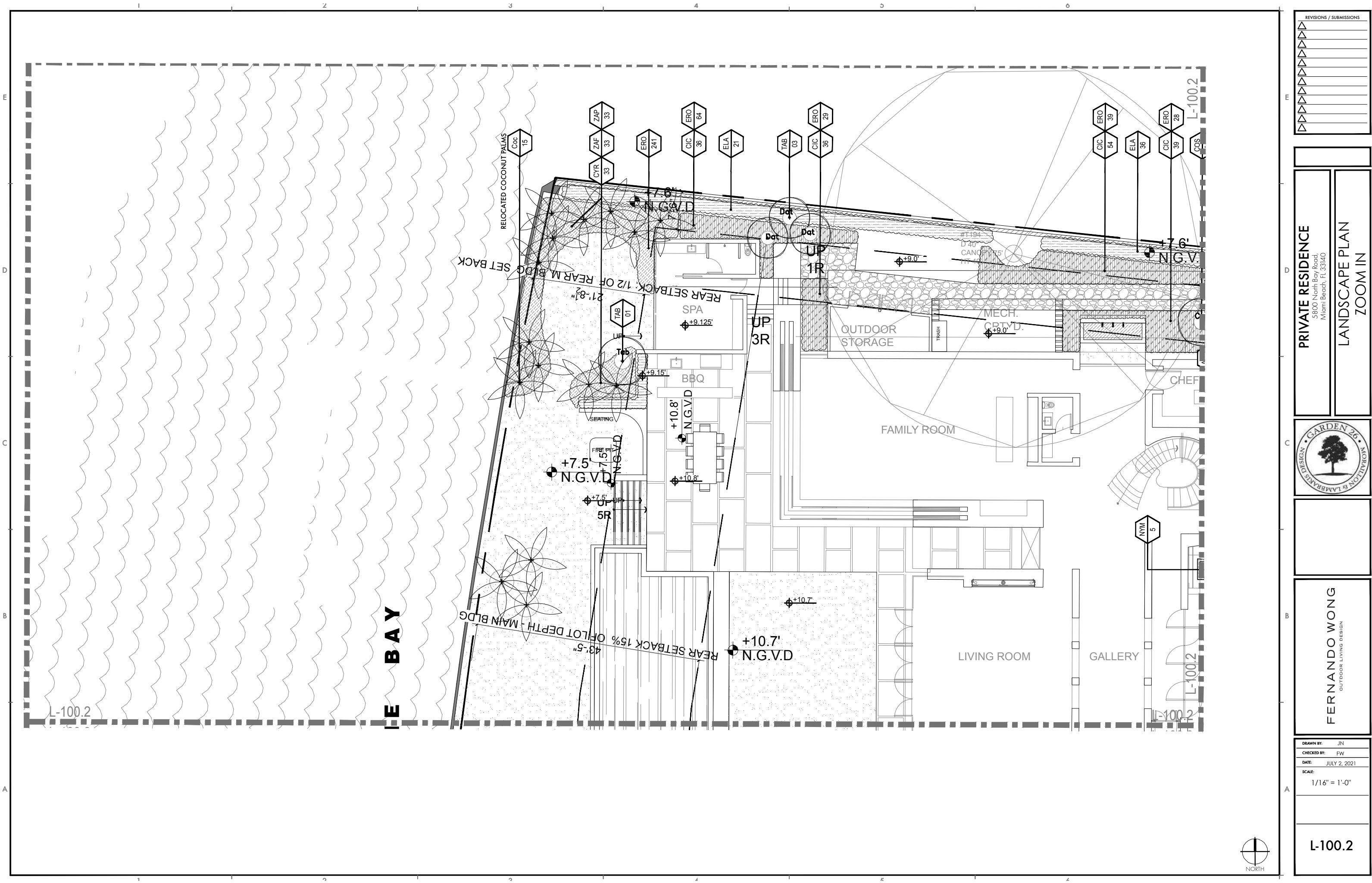


**FERNANDO WONG**  
 OUTDOOR LIVING DESIGN

DRAWN BY: JN  
 CHECKED BY: FW  
 DATE: JULY 2, 2021  
 SCALE: 1/16" = 1'-0"

**L-100.1**

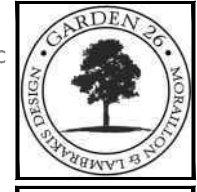




REVISIONS / SUBMISSIONS


**PRIVATE RESIDENCE**  
 5800 North Bay Road,  
 Miami Beach, FL 33140

**LANDSCAPE PLAN**  
**ZOOM IN**



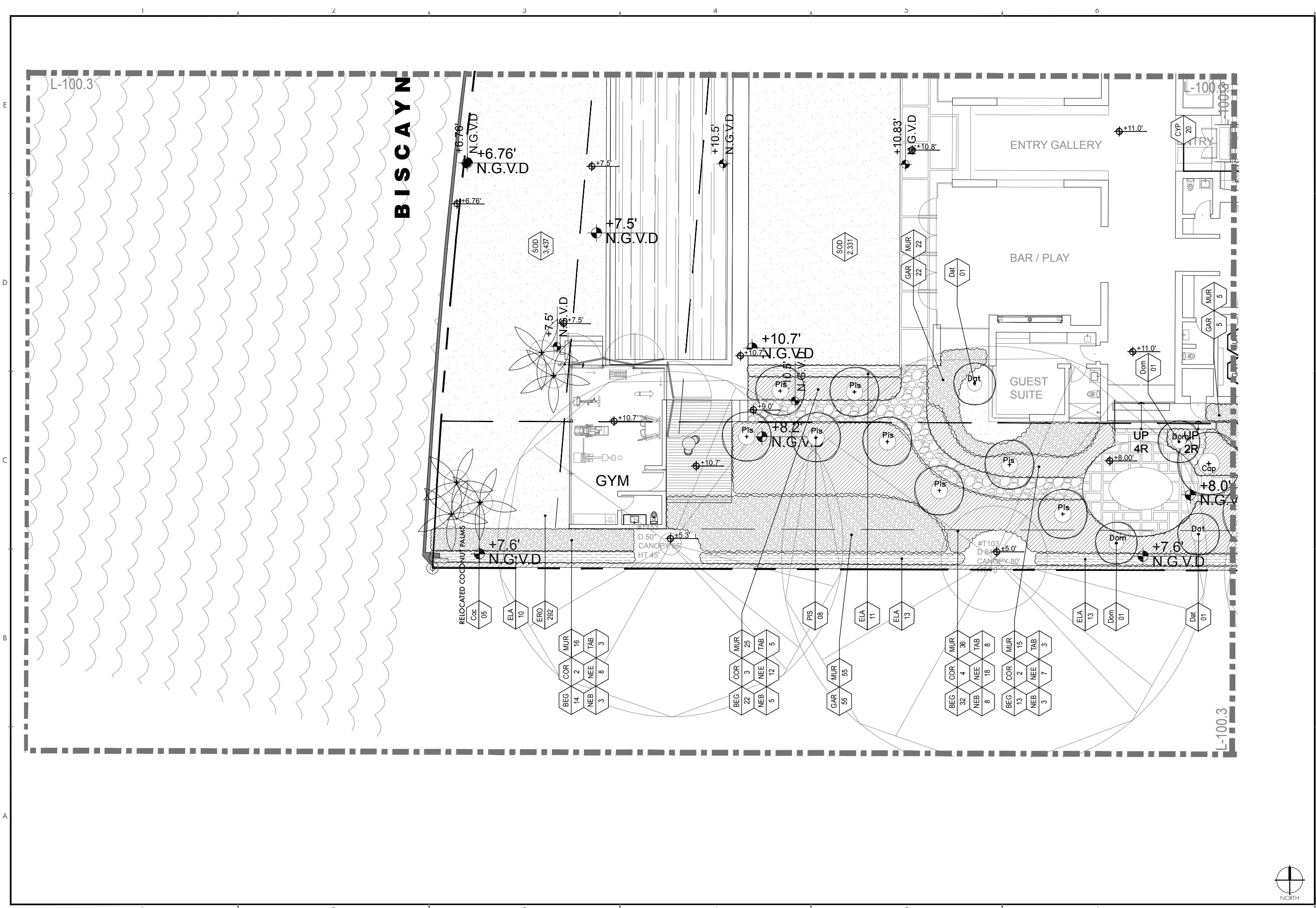
**FERNANDO WONG**  
 OUTDOOR LIVING DESIGN

**FERNANDO WONG**  
 OUTDOOR LIVING DESIGN

DRAWN BY: JN  
 CHECKED BY: FW  
 DATE: JULY 2, 2021  
 SCALE: 1/16" = 1'-0"

**L-100.2**

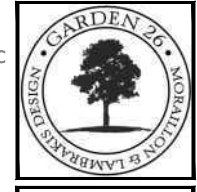




REVISIONS / SUBMISSIONS


**PRIVATE RESIDENCE**  
 5800 North Bay Road,  
 Miami Beach, FL 33140

**LANDSCAPE PLAN**  
 ZOOM IN

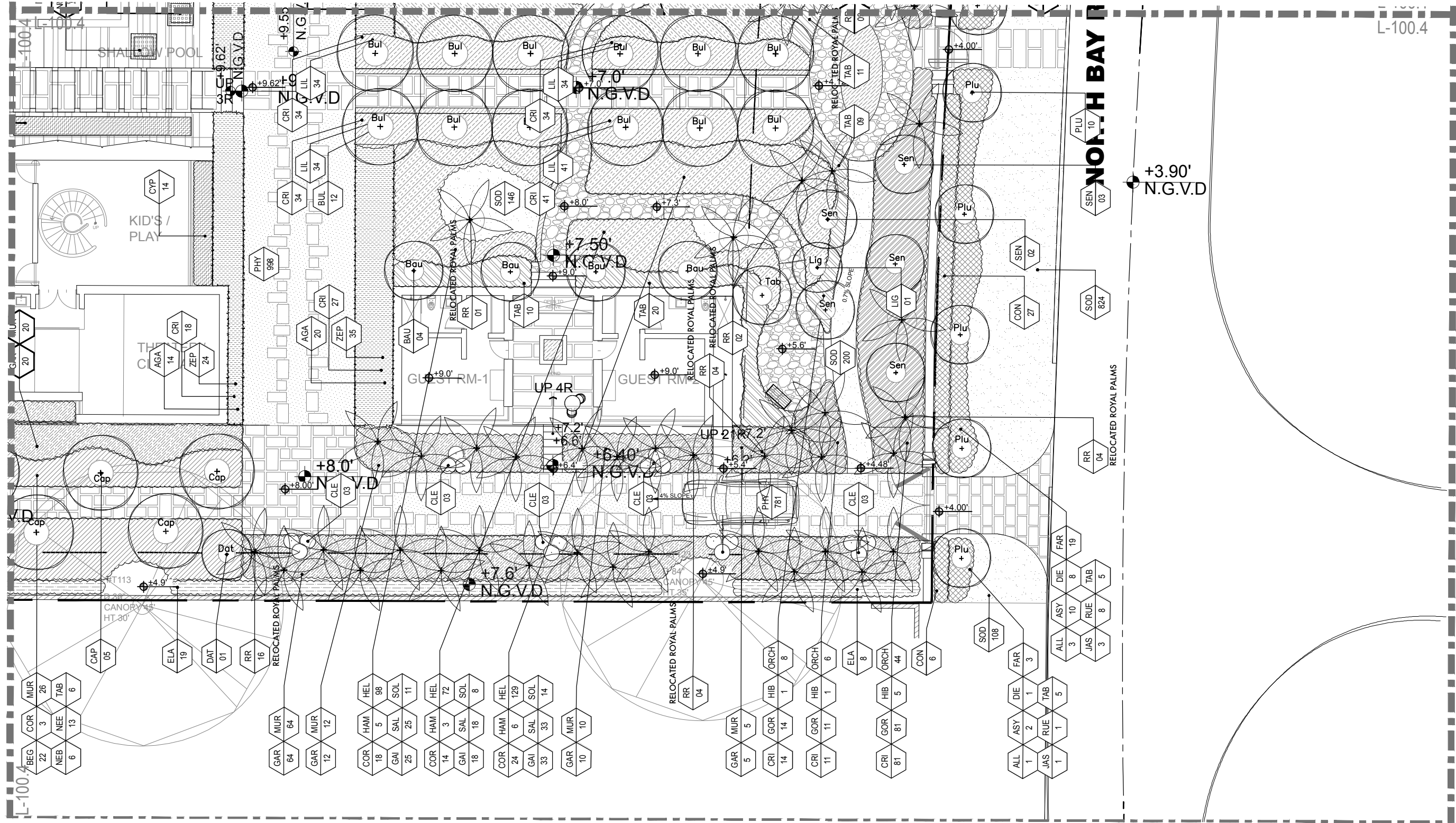


**FERNANDO WONG**  
 OUTDOOR LIVING DESIGN

DRAWN BY: JN  
 CHECKED BY: FW  
 DATE: JULY 2, 2021  
 SCALE: 1/16" = 1'-0"

**L-100.3**





REVISIONS / SUBMISSIONS


**PRIVATE RESIDENCE**  
 5800 North Bay Road,  
 Miami Beach, FL 33140

**LANDSCAPE PLAN**  
 ZOOM IN

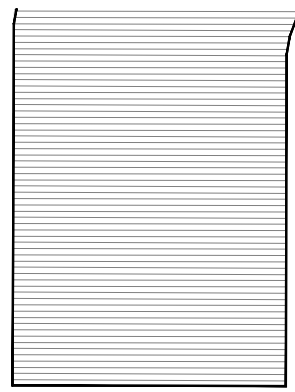
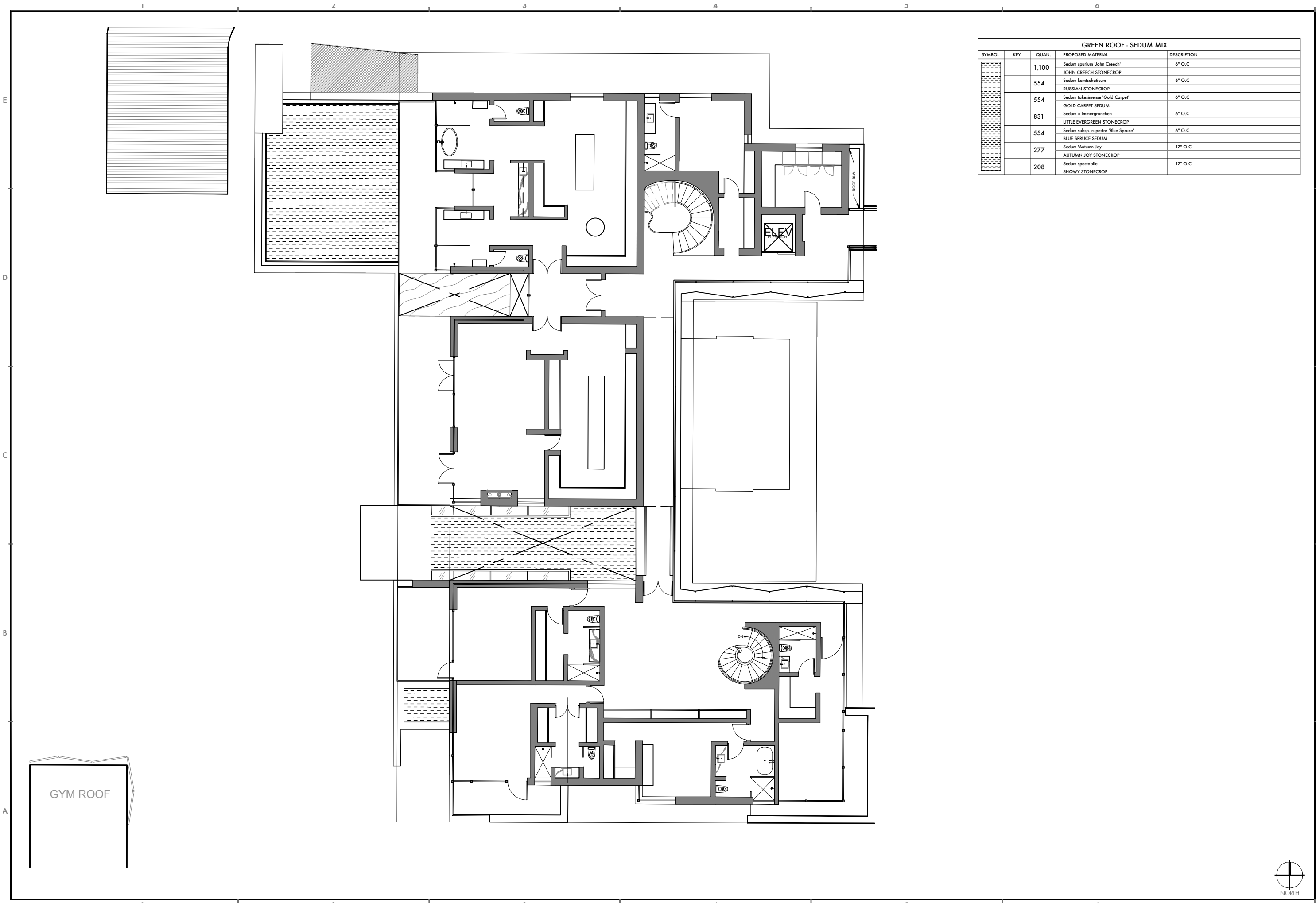


**FERNANDO WONG**  
 OUTDOOR LIVING DESIGN

DRAWN BY: JN  
 CHECKED BY: FW  
 DATE: JULY 2, 2021  
 SCALE: 1/16" = 1'-0"



L-100.4



GREEN ROOF - SEDUM MIX			
SYMBOL	KEY	QUAN.	DESCRIPTION
[Hatched Pattern]		1,100	Sedum spurium 'John Creech' JOHN CREECH STONECROP 6" O.C
		554	Sedum kamtschaticum RUSSIAN STONECROP 6" O.C
		554	Sedum takesimensis 'Gold Carpet' GOLD CARPET SEDUM 6" O.C
		831	Sedum x Immergrunchen LITTLE EVERGREEN STONECROP 6" O.C
		554	Sedum subsp. rupestre 'Blue Spruce' BLUE SPRUCE SEDUM 6" O.C
		277	Sedum 'Autumn Joy' AUTUMN JOY STONECROP 12" O.C
		208	Sedum spectabile SHOWY STONECROP 12" O.C

REVISIONS / SUBMISSIONS

**PRIVATE RESIDENCE**  
5800 North Bay Road,  
Miami Beach, FL 33140

**LANDSCAPE PLAN**  
**GREEN ROOF**



**FERNANDO WONG**  
OUTDOOR LIVING DESIGN

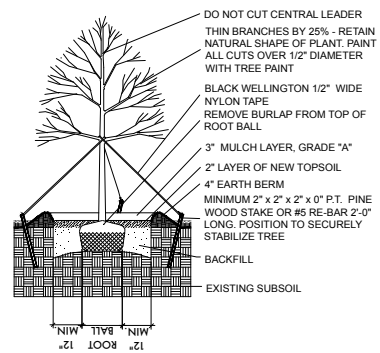
DRAWN BY: JN  
CHECKED BY: FW  
DATE: JULY 2, 2021  
SCALE: 1/16" = 1'-0"

**L-100.5**

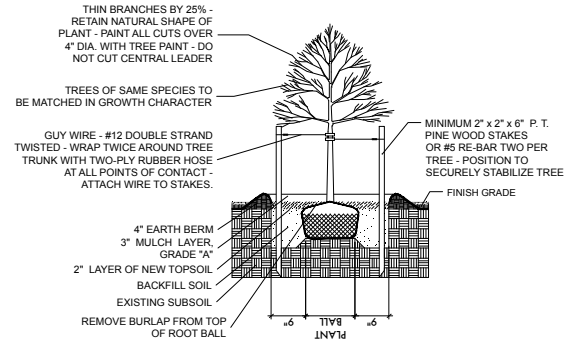




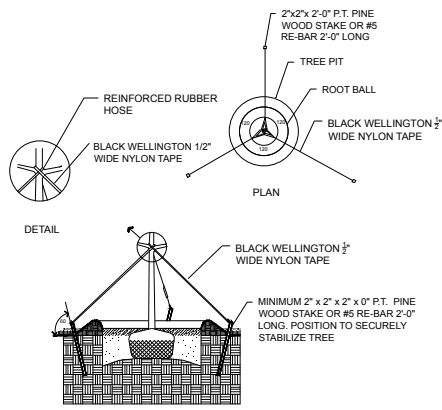




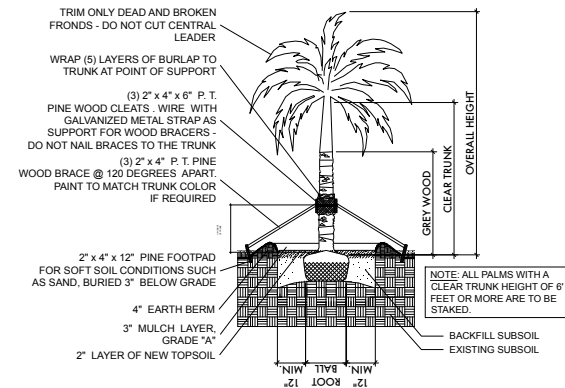
LARGE TREE PLANTING DETAIL



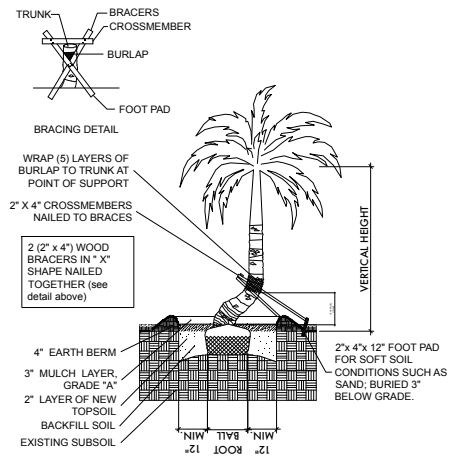
SMALL TREE PLANTING DETAIL



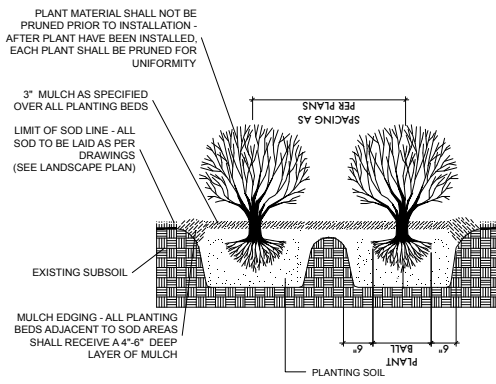
TYPICAL TREE GUYING DETAIL



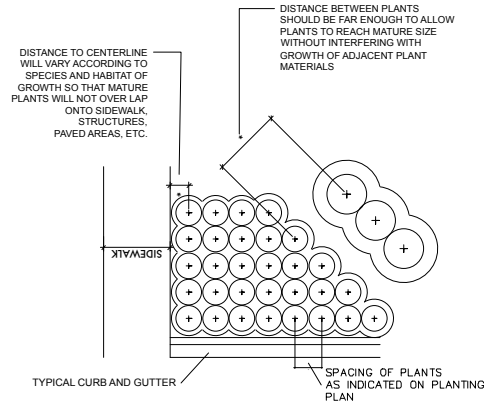
STRAIGHT TRUNK PALM PLANTING DETAIL



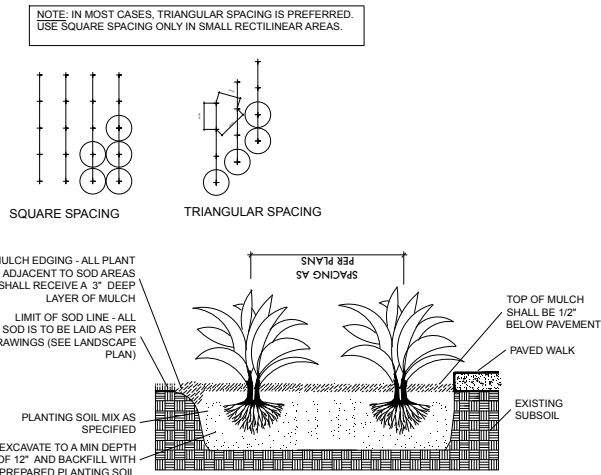
CURVED TRUNK PALM PLANTING DETAIL



TYPICAL SHRUB PLANTING DETAIL



TYPICAL CONTAINER SPACING DETAIL



TYPICAL GROUNDCOVER PLANTING DETAIL

**PLANTING NOTES:** (See plant specification and details for additional standards)

- All plant material is to be Florida Number 1 or better pursuant to the Florida Department of Agriculture's Grades and Standards for Nursery Plants.
- All plants are to be top dressed with a minimum 3" layer of Melaleuca mulch, Eucalyptus mulch or equal.
- Planting plans shall take precedence over plant list in case of discrepancies.
- No changes are to be made without the prior consent of the Landscape Architect and Owner. Additions and or deletions to the plant material must be approved by the project engineer.
- Landscape Contractor is responsible for providing their own square footage takeoffs and field verification for 100% sod coverage for all areas specified.
- All landscape areas are to be provided with automatic sprinkler system which provide 100% coverage, and 50% overlap.
- All trees in lawn areas are to receive a 24" diameter mulched saucer at the base of the trunk.
- No mulch, fill or soil will be placed over the rootballs or within 4" of the trunks of the newly installed trees, and the trees will be installed at or slightly above the soil grade.
- All straps, poles and braces shall be removed from all of the installed trees and palms within the 1-year of planting.
- No changes are to be made without the prior consent of the Landscape Architect, owner, City Urban Forester and City Planning Department. Additions and or deletions to the plant material must be approved per the Project Engineer, City Urban Forester and City Planning Department.

- Trees are to be planted within parking islands after soil is brought up to grade. Deeply set root balls are not acceptable.
- Planting soil for topsoil and backfill shall be 50/50 mix, nematode free. Planting soil for annual beds to be comprised of 50% Canadian peat moss, 25% salt free coarse sand and 25% Aerolite.
- Tree and shrub pits will be supplemented with "Agriform Pells", 21 gram size with a 20-10-5 analysis, or substitute application accepted by Landscape Architect. Deliver in manufacturer's standard containers showing weight, analysis and name of manufacturer.
- Tree protection fences shall be constructed prior to any construction activity including grubbing for all trees/palms to remain or be relocated. The fences should be of sturdy construction, 4x4 posts with wire mesh. Fences must be intact until the project is completed. They should not be removed or dropped for any reason without authorization from the city Urban Forester. No activity or disturbance should occur within the fenced areas, including vehicle use, storage of materials, dumping of liquids or materials, grade changes, grubbing and mechanical trenching for irrigation, electrical and lighting, etc.

**GENERAL NOTES**

- The Landscape Contractor is to locate and verify all underground and overhead utilities prior to beginning work. Contact proper utility companies and / or General Contractor prior to digging for field verification. The Owner and the Landscape Architect shall not be responsible for any damages to utility or irrigation lines (see Roadway Plans for more utility notes).
- Landscape Contractor is to verify all current drawings and check for discrepancies and bring to the attention of the Landscape Architect prior to commencing with the work.
- All unattended and unplanted tree pits are to be properly barricaded and flagged during installation.
- All planting plans are issued as directives for site layout. Any deviations, site changes, etcetera are to be brought to the attention of the Landscape Architect for clarification prior to installation.

REVISIONS / SUBMISSIONS

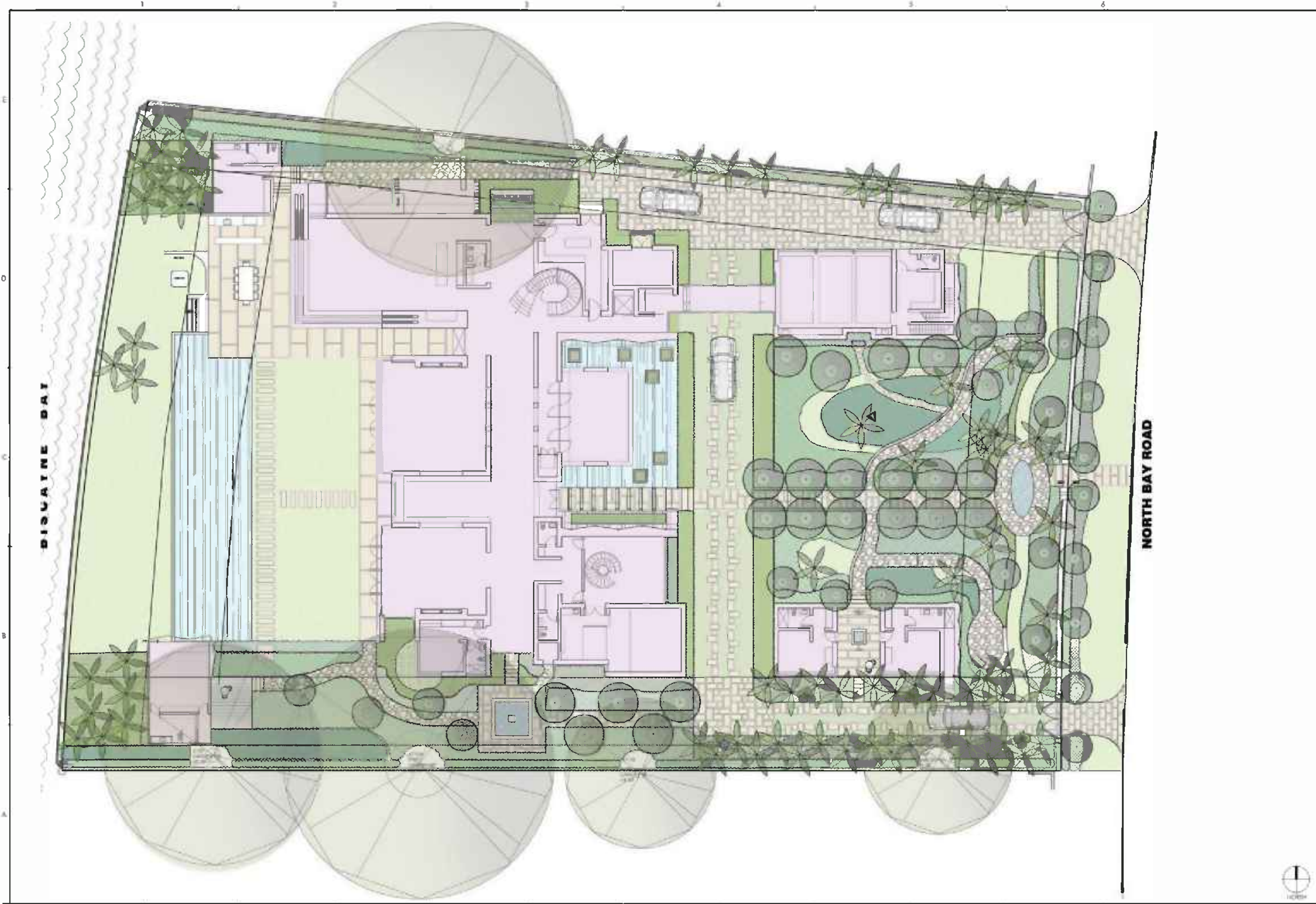
**PRIVATE RESIDENCE**  
5800 North Bay Road,  
Miami Beach, FL 33140

**PLANTING DETAILS**



**FERNANDO WONG**  
OUTDOOR LIVING DESIGN

DRAWN BY: JN
CHECKED BY: FW
DATE: JULY 2, 2021
SCALE:



DISUAYNE BAY

NORTH BAY ROAD



REVISIONS / SUBMISSIONS

Δ
Δ
Δ
Δ
Δ
Δ
Δ
Δ
Δ
Δ
Δ
Δ

**PRIVATE RESIDENCE**  
 3855 North Bay Road  
 Miami Beach, FL 33140

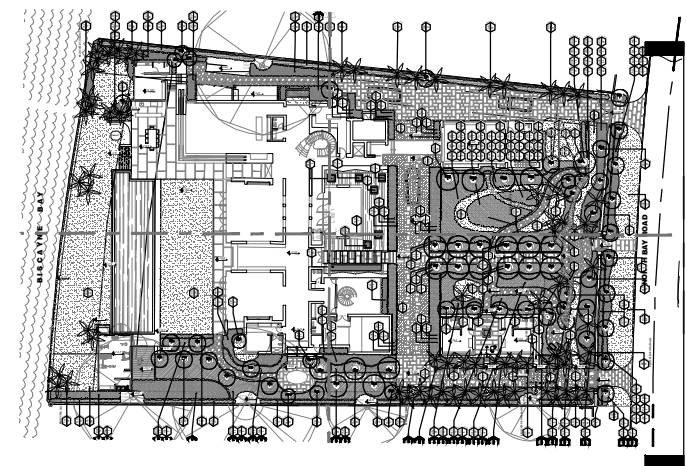
**RENDERED PLAN**



**FERNANDO WONG**  
 Florida Registered Professional Engineer  
 No. 12197

SCALE	AS SHOWN
DRAWN BY	FW
CHECKED BY	FW
DATE	02/2/2021
SCALE	N.T.S.

L-200



REVISIONS / SUBMISSIONS
△
△
△
△
△
△
△
△
△
△
△

PRIVATE RESIDENCE  
 5800 North Bay Road,  
 Miami Beach, FL 33140

FRONT ELEVATION



FERNANDO WONG  
 OUTDOOR LIVING DESIGN

DRAWN BY: JN  
 CHECKED BY: FW  
 DATE: JULY 2, 2021  
 SCALE: 1/16" = 1'-0"

L-201

REVISIONS / SUBMISSIONS	
△	
△	
△	
△	
△	
△	
△	
△	
△	
△	
△	
△	

PRIVATE RESIDENCE  
5800 North Bay Road,  
Miami Beach, FL 33140

EAST SECTION



FERNANDO WONG  
OUTDOOR LIVING DESIGN

DRAWN BY: JN  
CHECKED BY: FW  
DATE: JULY 2, 2021  
SCALE: 1/16" = 1'-0"

L-202

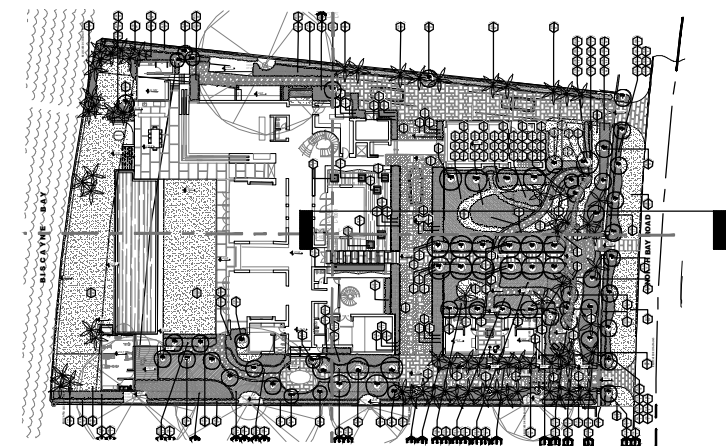
3'-0" NGVD / FF 28'-0"  
MAIN RESIDENCE

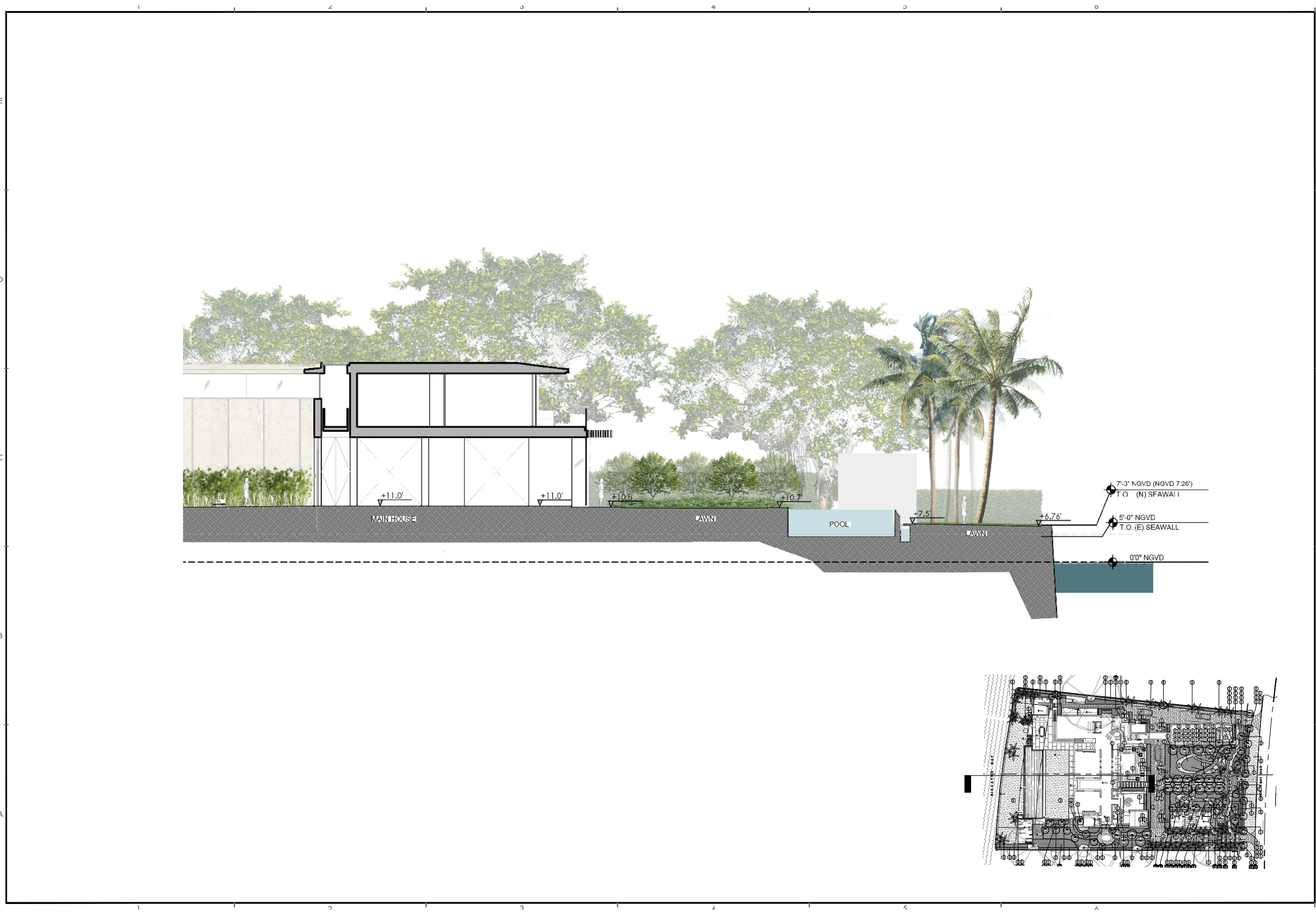
26'-6" NGVD / FF 15'-6"  
LVL 2, MAIN RESIDENCE

11'-0" NGVD / FF 0'-0"  
LVL 1, MAIN RESIDENCE

FF 5.51' NGVD  
LVL 1, (E) RESIDENCE

0'-0" NGVD





REVISIONS / SUBMISSIONS
△
△
△
△
△
△
△
△
△
△

PRIVATE RESIDENCE  
 5800 North Bay Road,  
 Miami Beach, FL 33140

WEST SECTION



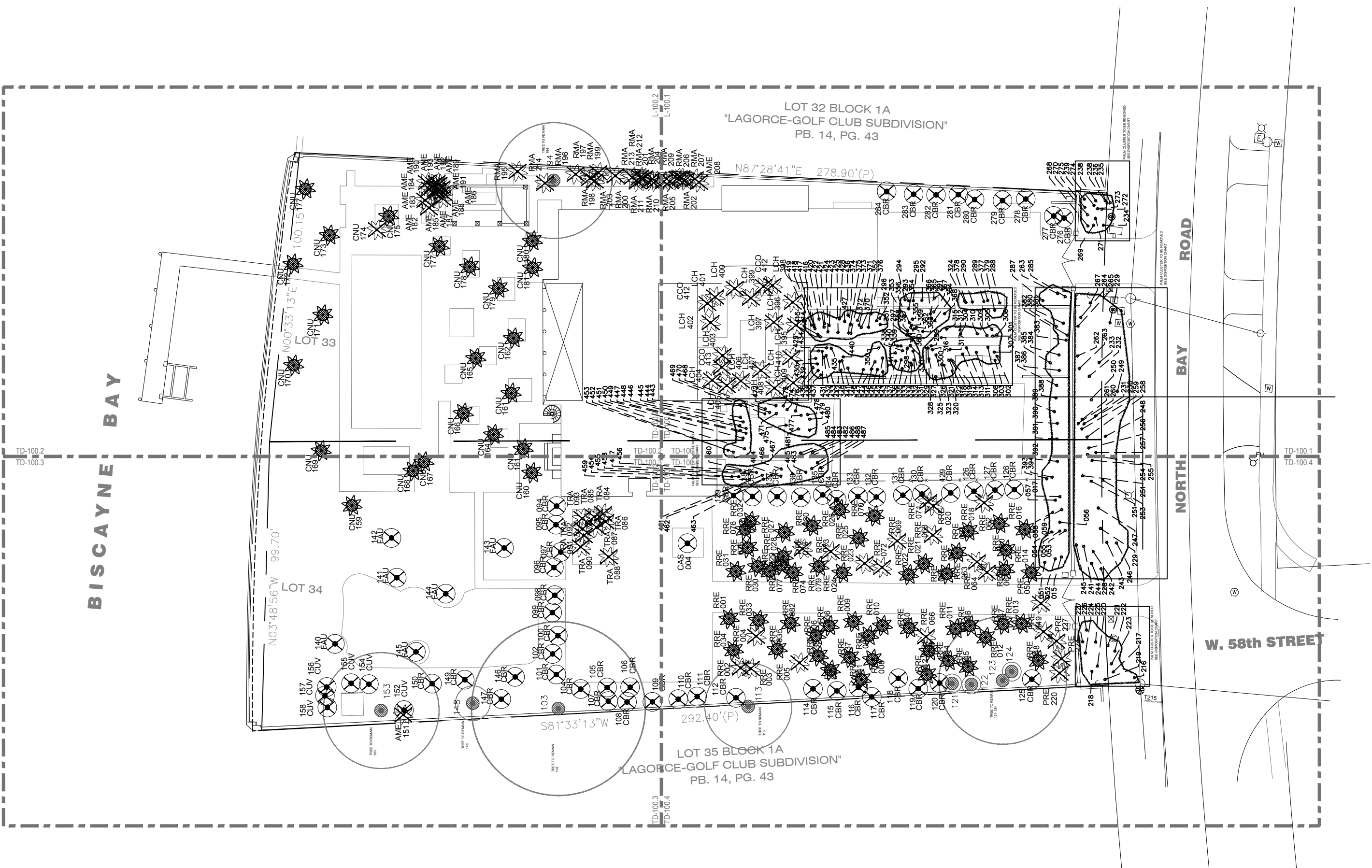
FERNANDO WONG  
 OUTDOOR LIVING DESIGN

DRAWN BY: JN  
 CHECKED BY: FW  
 DATE: JULY 2, 2021  
 SCALE: 1/16" = 1'-0"

L-203

BISCAYNE BAY

TD-100.2  
TD-100.3



W. 58th STREET

NORTH BAY ROAD

0 4 8 16 32  
SCALE: 1/32" = 1'-0"



REVISIONS / SUBMISSIONS


**PRIVATE RESIDENCE**  
5800 North Bay Road,  
Miami Beach, FL 33140

**TREE DISPOSITION PLAN**



**FERNANDO WONG**  
OUTDOOR LIVING DESIGN

DRAWN BY: JN  
CHECKED BY: FW  
DATE: JULY 2, 2021  
SCALE:  
1/32" = 1'-0"

TD-100