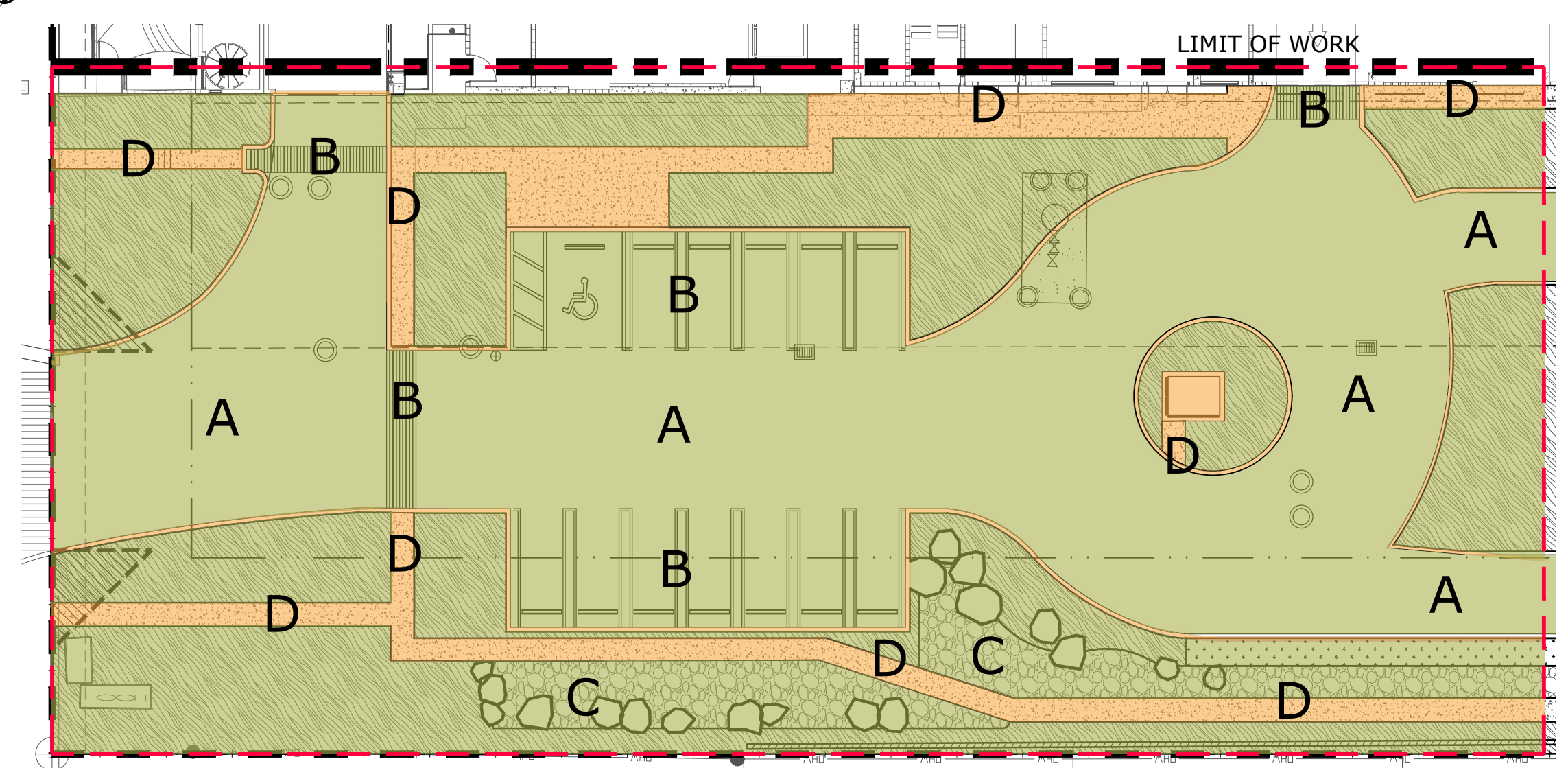
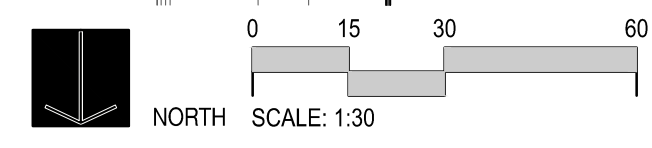
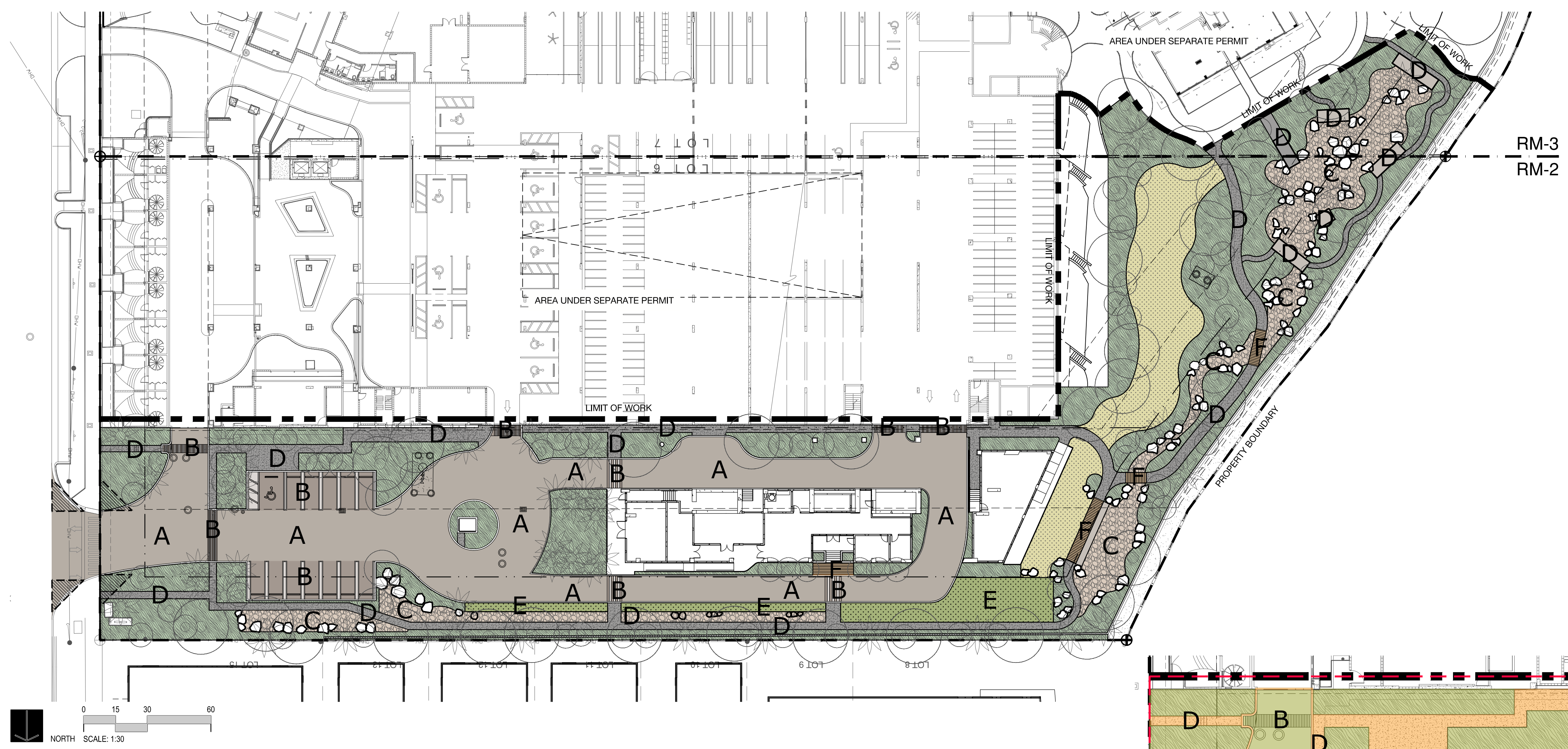


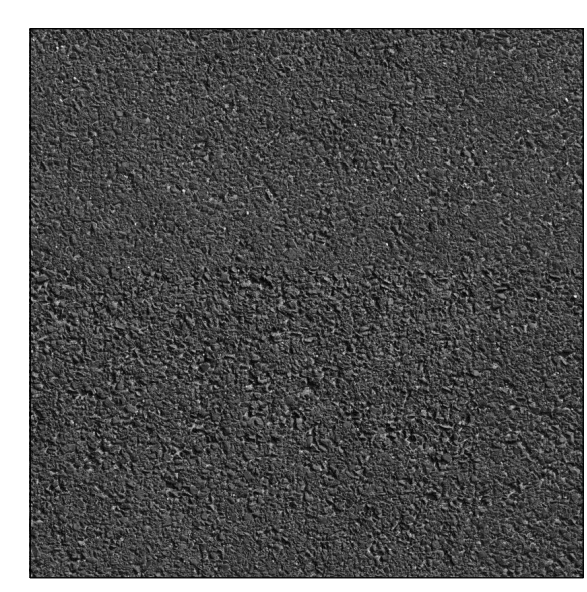
FLAMINGO
1420 BAY ROAD, MIAMI BEACH



PERMEABILITY DIAGRAM

PERMEABLE AREAS	86 %
NON-PERMEABLE AREAS	14 %

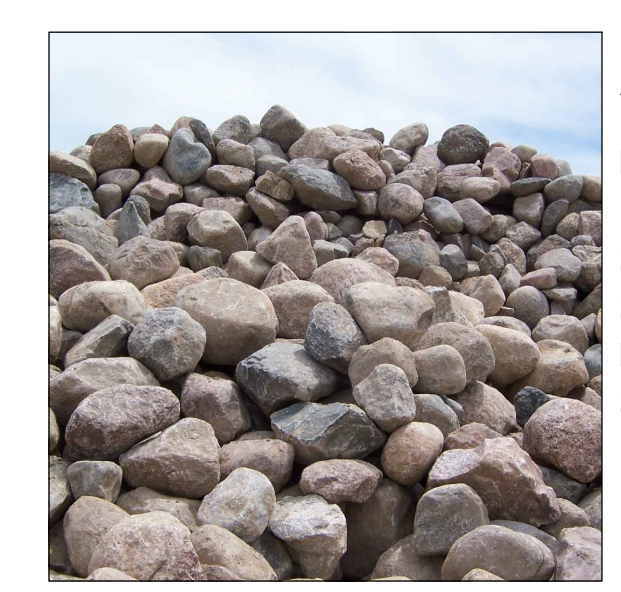
MATERIALS



A
MATERIAL: PERMEABLE ASPHALT
SPECS: PER SUPPLIER
LOCATION: DRIVEWAY
SOURCE: T.B.D.



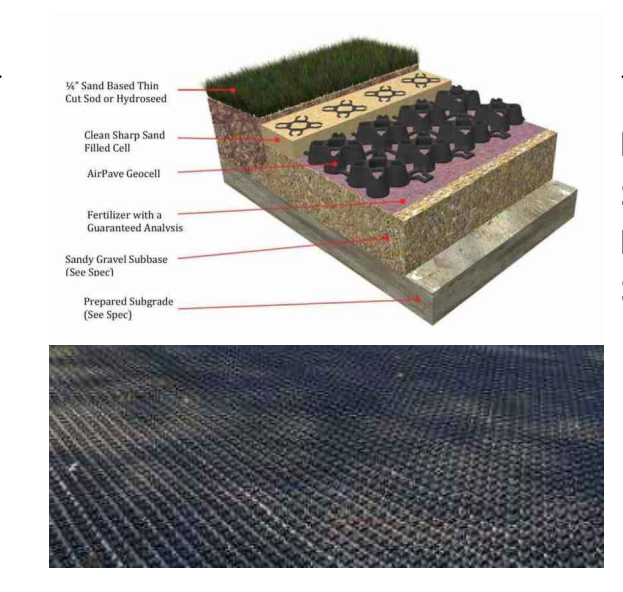
B
MATERIAL: PERVIOUS CONCRETE PAVER
SPECS: SAND SET
LOCATION: PEDESTRIAN CROSSINGS
SOURCE: T.B.D.



C
MATERIAL: GRANITE BOULDERS
SPECS: PER SUPPLIER
SIZE: 4" - 6"
LOCATION: BIO-SWALE
SOURCE: T.B.D.



D
MATERIAL: CONCRETE
SPECS: SMOOTH ROCK SALT FINISH
LOCATION: WALKWAY
SOURCE: T.B.D.



E
MATERIAL: AIRPAVE™ GEOCELL
SPECS: PER SUPPLIER
LOCATION: FIRE TRUCK STAGING
SOURCE: AIR FIELD SYSTEMS (405) 359-3775 airfielddesign.com



F
MATERIAL: IPE HARDWOOD
SPECS: CLIPPED
SIZE: 3/4" x 5"
LOCATION: AS SHOWN ON PLAN
SOURCE: T.B.D.



Stantec Architecture Inc. - AA26000733
Andrew Burnett Lic. # AR98495
Adriana Jaegerman Lic. # 72428

Stantec Architecture Inc.
One Biscayne Tower Suite 1670
2 South Biscayne Boulevard
Miami, FL 33131-1804
Tel: (305) 482-8700 / Fax: (305) 482-8770

DRB FINAL SUBMITTAL

04.05.2021

LAND
7294 NW 1st COURT, MIAMI, FL 33150
614.439.4885 / WWW.LAND.DESIGN

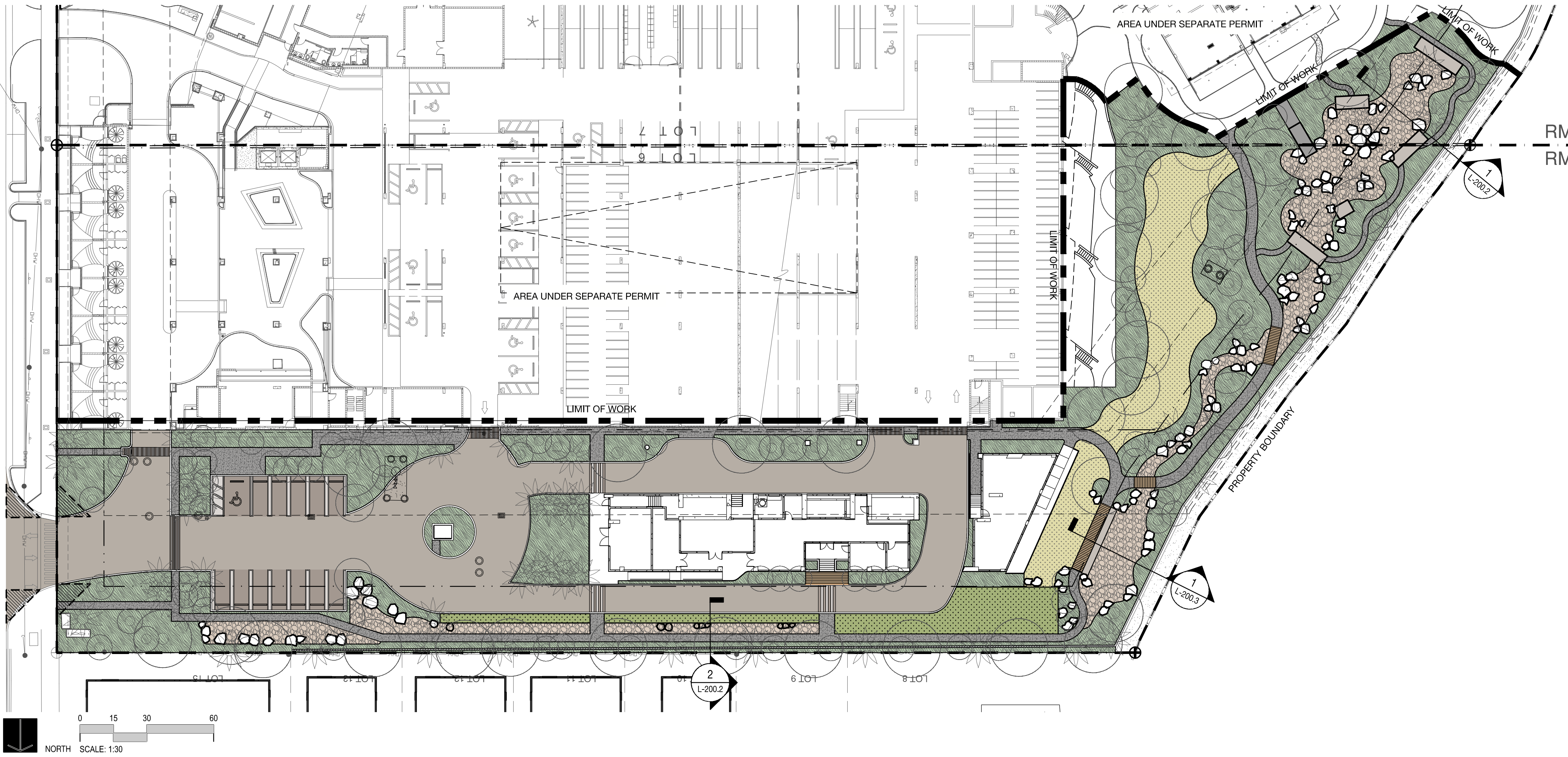
Copyright Reserved

L-200.1

Note: When printed on 11 x 17 paper scale is halved

FLAMINGO

1420 BAY ROAD, MIAMI BEACH



Stantec Architecture Inc - AA26000733
 Andrew Burnett Lic. # AR98495
 Adriana Jaegerman Lic. # 72428

Stantec

Stantec Architecture Inc.
 One Biscayne Tower Suite 1670
 2 South Biscayne Boulevard
 Miami, FL 33131-1804
 Tel: (305) 482-8700 / Fax: (305) 482-8770

DRB FINAL SUBMITTAL

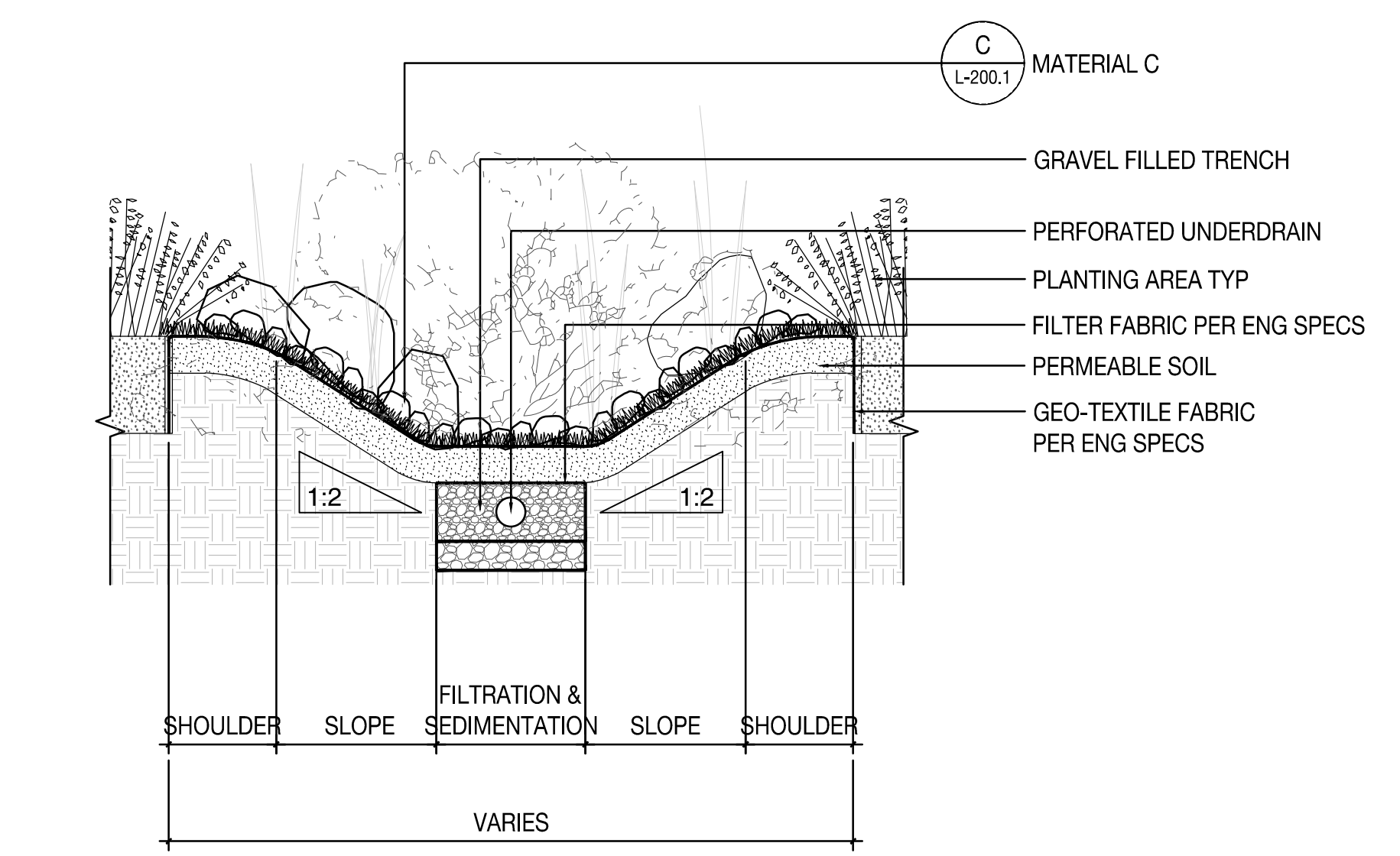
04.05.2021

LAND

7294 NW 1st COURT, MIAMI, FL 33150
 614.439.4885 / WWW.LAND.DESIGN

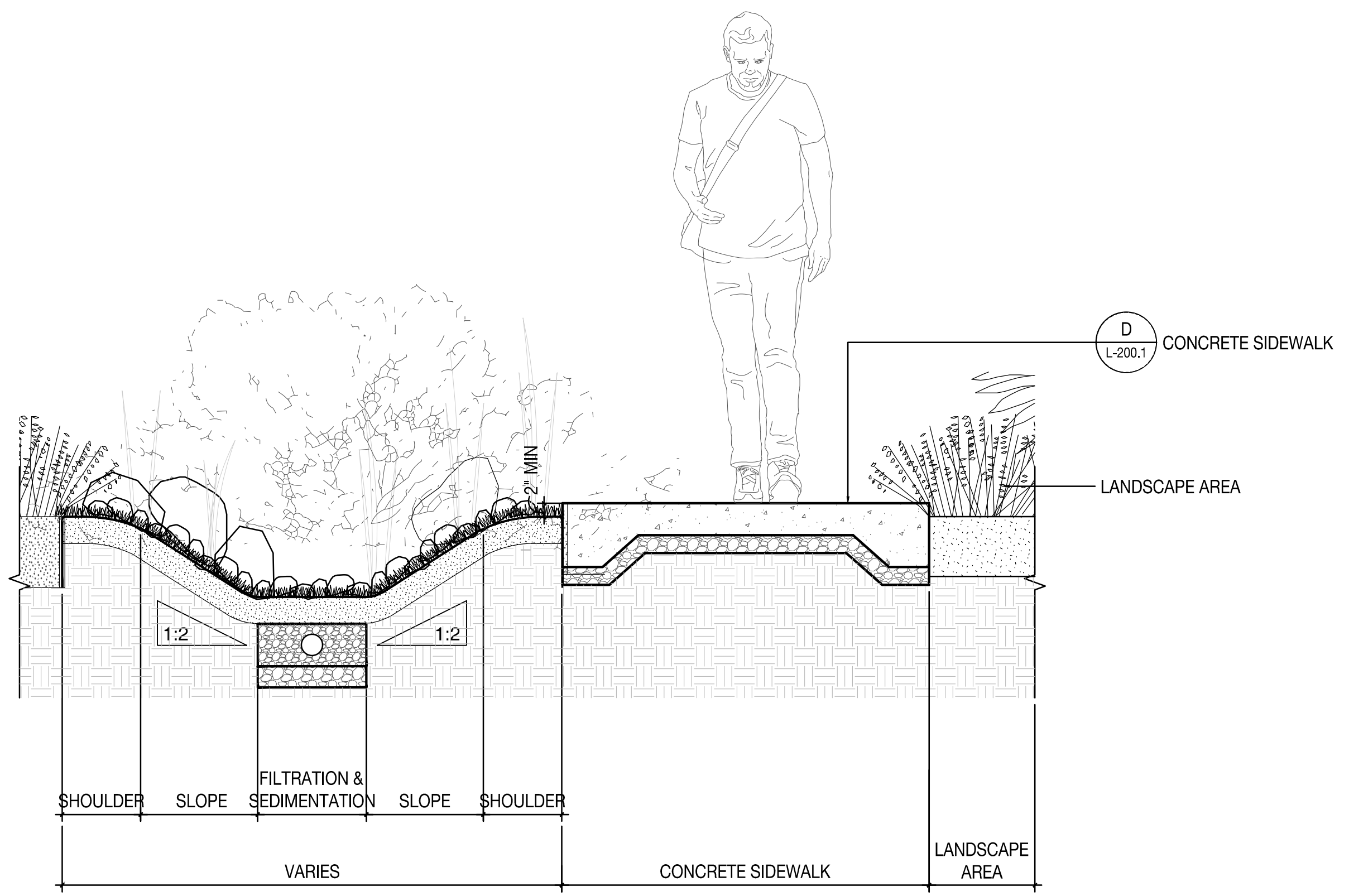
Copyright Reserved

L-200.2



1 BIO-SWALE SECTION (TYP)

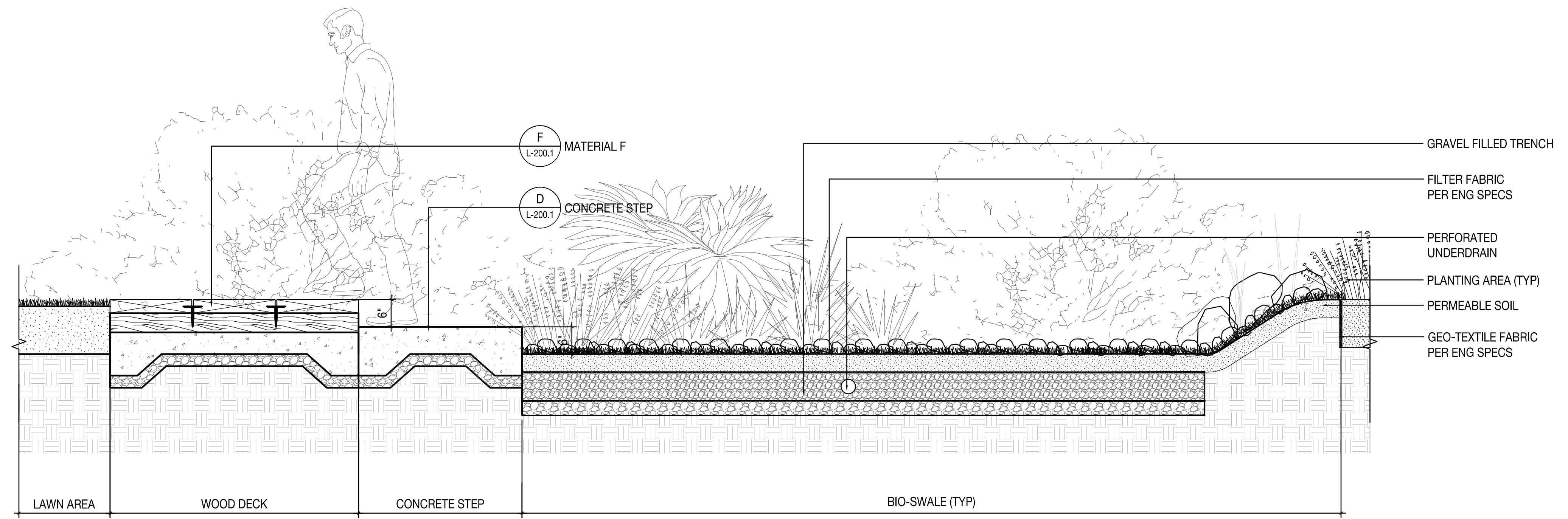
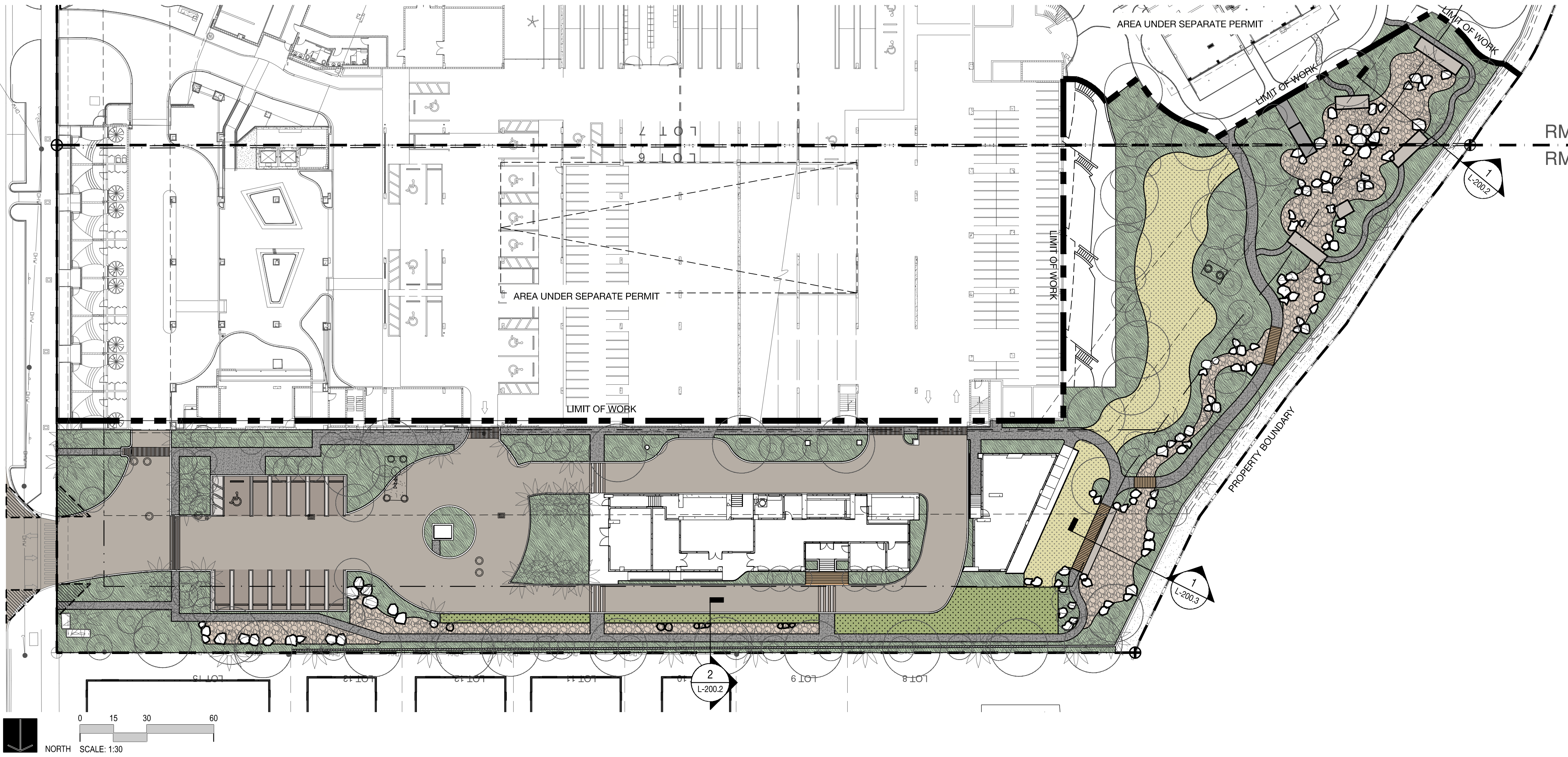
Scale: 3/4" = 1'-0"



2 BIO-SWALE AND PEDESTRIAN PATH SECTION (TYP)

Scale: 3/4" = 1'-0"

Note: When printed on 11 x 17 paper scale is halved

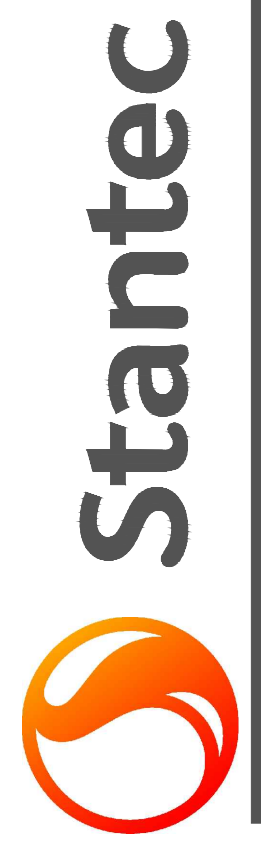


1 BIO-SWALE, STEP AND BRIDGE SECTION

Scale: 3/4" = 1'-0"

FLAMINGO
1420 BAY ROAD, MIAMI BEACH

Stantec Architecture Inc - AA26000733
Andrew Burnett Lic. # AR98495
Adriana Jaegerman Lic. # 72428



Stantec Architecture Inc.
One Biscayne Tower Suite 1670
2 South Biscayne Boulevard
Miami, FL 33131-1804
Tel: (305) 482-8700 / Fax: (305) 482-8770

DRB FINAL SUBMITTAL

04.05.2021

LAND
7294 NW 1st COURT, MIAMI, FL 33150
614.439.4895 / WWW.LAND.DESIGN

Copyright Reserved

L-200.3

Note: When printed on 11 x 17 paper scale is halved

TREES & PALMS
PLANTING PLAN

FLAMINGO
1420 BAY ROAD, MIAMI BEACH

Stantec Architecture Inc - AA26000733
Andrew Burnett Lic. # AR98495
Adriana Jaegerman Lic. # 72428

Stantec



Stantec Architecture Inc.
One Biscayne Tower Suite 1670
2 South Biscayne Boulevard
Miami, FL 33131-1804
Tel: (305) 482-8700 / Fax: (305) 482-8770

DRB FINAL SUBMITTAL

04.05.2021

Copyright Reserved

L-300.1

PLANTING LEGEND

- TREE TO BE PRESERVED
- PALM TO BE PRESERVED
- TRANSPLANTED TREE
- TRANSPLANTED PALM
- PROPOSED PALM
- PROPOSED TREE

LANDSCAPE LEGEND

MUNICIPALITY: City of Miami Beach
ZONING CLASS: **RM-3** LOT AREA: 74,600 ACRES: 1.7126
ORDINANCE/CODE SECTION: CITY OF MIAMI BEACH SECTION 126

OPEN SPACE	REQUIRED/ALLOWED	PROVIDED
A. Sq. Ft. of required Open Space Lot area: 74,600 Multiplier: 30%	22,380	22,380
B. Sq. Ft. of parking lot open space Parking Spaces: 0 Multiplier: 10 sf/space	0	0
C. Total Sq. Ft. of landscaped Open Space required	22,380	22,380

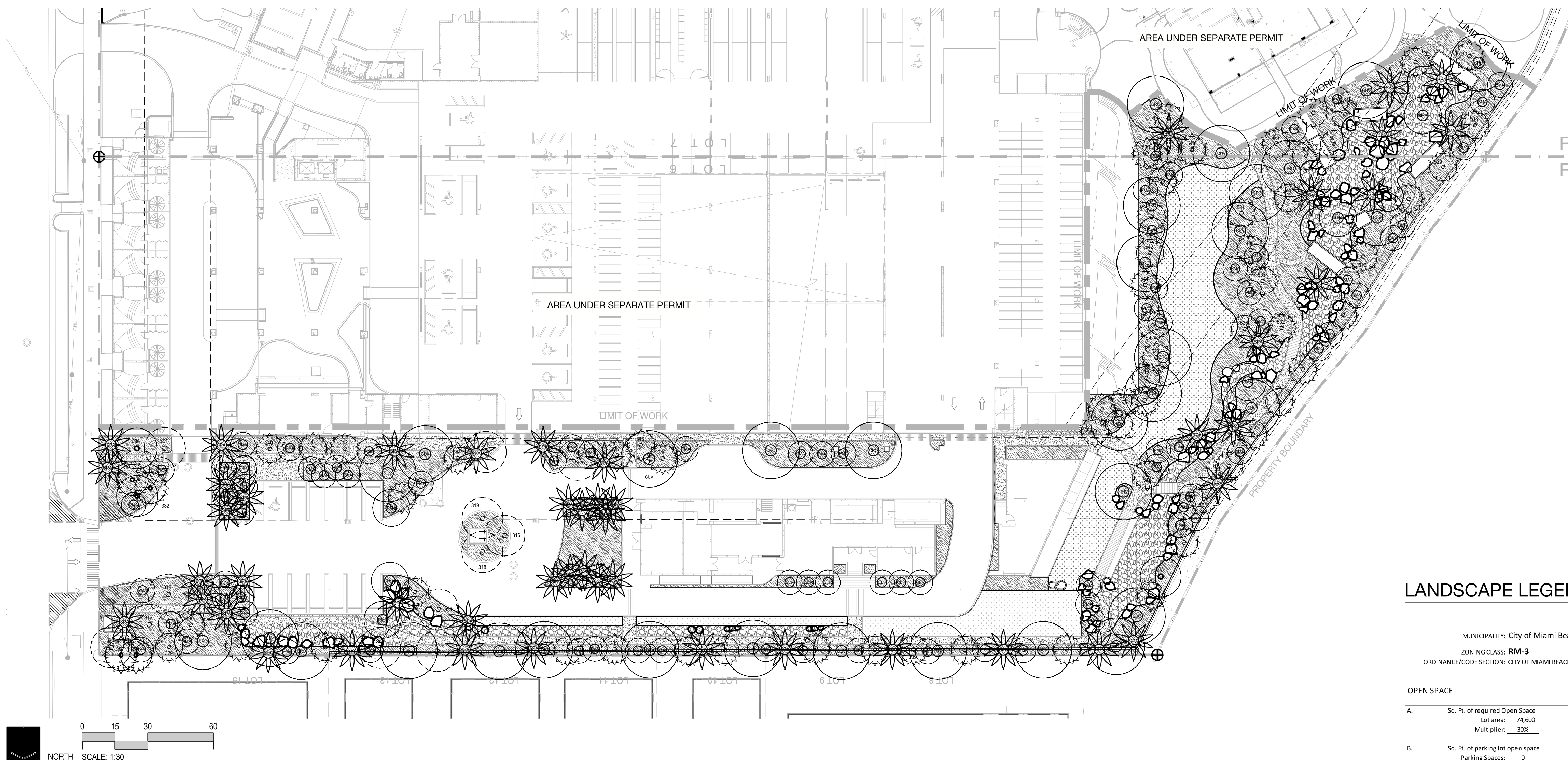
LAWN AREA	REQUIRED/ALLOWED	PROVIDED
A. Total Sq. Ft. of landscaped Open Space	22,380	22,380
B. Maximum Lawn Area (sod) permitted- Open space required: 22,380 Multiplier: 20%	4,476	4,476

TREES	REQUIRED/ALLOWED	PROVIDED
A. Number of trees required per lot, less existing trees Required Trees/Lot: 28 Net lot acres: 1.7126 Required Trees: 28 Existing trees: 0	48	48
B. % Palms allowed Trees provided: 48 Multiplier: 0%	0	0
PER CODE SECTION 126-6.C.10 PALMS DO NOT COUNT TOWARD MIN. TREE REQUIREMENTS		
C. % Native required Trees provided: 48 Multiplier: 30%	14	14
D. % Drought tolerant and low maintenance species required Trees provided: 48 Multiplier: 50%	24	24

STREET TREES	REQUIRED/ALLOWED	PROVIDED
A. Street trees (maximum average spacing of 20' o.c.) Linear ft of street frontage: 0 Multiplier: 20 Existing trees: 0	0	0
B. Street trees directly below power lines Linear ft of street frontage: 0 Multiplier: 20	0	0

SHRUBS	REQUIRED/ALLOWED	PROVIDED
A. Number of shrubs required Lot and street trees required: 48 Multiplier: 12	575	575
B. % Native species required Shrubs provided: 575 Multiplier: 50%	288	288

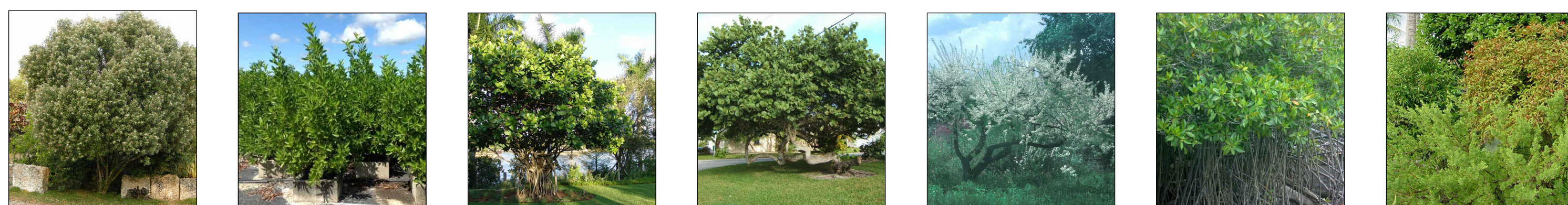
LARGE SHRUBS OR SMALL TREES	REQUIRED/ALLOWED	PROVIDED
A. Number of shrubs or small tree required Shrubs required: 575 Multiplier: 10%	58	58
B. % Native species required Shrubs provided: 65 Multiplier: 50%	33	33



PLANTING SCHEDULE

TYPE	ABR.	QUANTITY	BOTANICAL NAME	COMMON NAME	SPECIFICATIONS
TREES					
	CCY	6	CAPPARIS CYNOPHALLOPHORA	JAMAICAN CAPER	45 GAL / 3" DBH / 14' HT MIN
	CER	6	CONOCARPUS ERECTUS	GREEN BUTTWOOD	100 GAL. 3" DBH & 14' HT MIN
	CRO	18	CLUSIA ROSEA	AUTOGRAPH TREE	200 GAL. 4" DBH & 12 - 14' HT. MIN.
	CUV	15	COCOLOBA UVIFERA	SEA GRAPE	FG 30' x 30'
	PMA	58	PRUNUS MARITIMA	SEA PLUM	FG 30' x 30'
	RMA	6	RHIZOPHORA MANGLE	MANGROVE TREE	FG 30' x 30'
	SMA	11	SURIAMA MARITIMA	BAY CEDAR	45 GAL. 2"DHB - 6' HT
PALMS					
	SPA1	16	SABAL PALMETTO	SABAL PALM	FG 30' CT
	SPA2	16	SABAL PALMETTO	SABAL PALM	FG 40' CT
	SPA3	17	SABAL PALMETTO	SABAL PALM	FG 50' CT

TREES



CAPPARIS CYNOPHALLOPHORA JAMAICAN CAPER
CONOCARPUS ERECTUS GREEN BUTTWOOD
CLUSIA ROSEA AUTOGRAPH TREE
COCOLOBA UVIFERA SEA GRAPE
PRUNUS MARITIMA SEA PLUM
RHIZOPHORA MANGLE MANGROVE TREE
SURIANA MARITIMA BAY CEDAR

PALMS



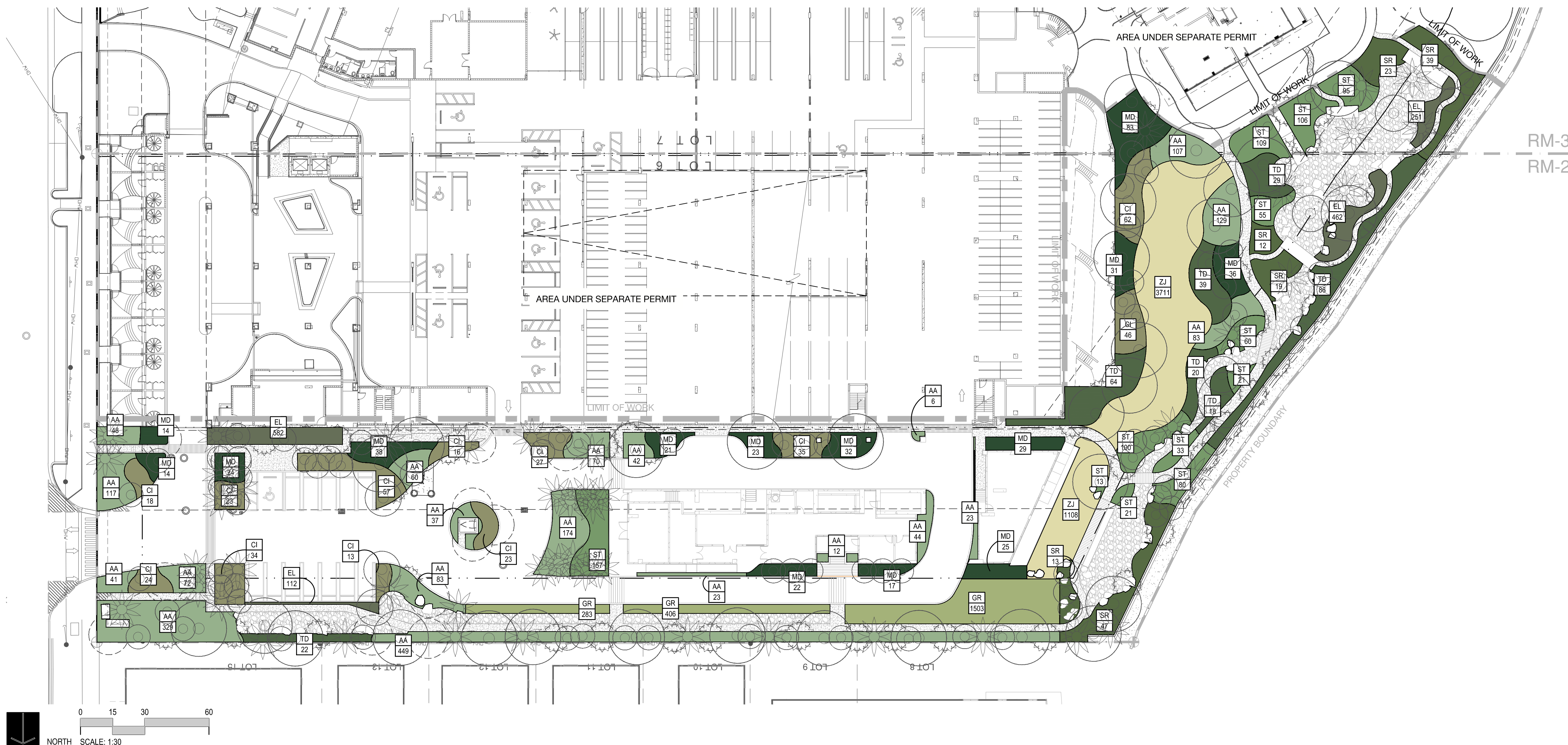
SABAL PALMETTO SABAL PALM

Note: When printed on 11 x 17 paper scale is halved

LAND
7294 NW 1st COURT, MIAMI, FL 33150
614.439.4895 / WWW.LAND.DESIGN

PLANTING LEGEND

- PROPOSED GROUNDCOVER
- PROPOSED LAWN
- PROPOSED REINFORCED GRASS



PLANTING SCHEDULE

TYPE	ABR.	QUANTITY	BOTANICAL NAME	COMMON NAME	SPECIFICATIONS
SHRUBS & GROUNDCOVERS					
AA	1949		ACROSTICJUM AUREUM	SWAMP FERN	1 GAL. 24" O.C.
CI	378		CHRYSOBALANUS ICACO	COCOPLUM	3 GAL. 36" O.C.
EL	1407		ERONDEA LITTORALIS	GOLDEN CREEPER	1 GAL. 12" O.C.
MD	409		MONSTERA DELICIOSA	SWISS CHEESE PLANT	15 GAL. 36" O.C.
SR	153		SERENOA REPENS	SILVER SAW PALMETTO	7 GAL. 48" O.C.
ST	850		SOPHORA TOMENTOSA	NECKLACE POD	3 GAL. 24" O.C.
TD	278		TRIPSACUM DACTYLOIDES	FAKAHATCHEE	3 GAL. 42" O.C.
GRASSES					
GR	2192 SQFT		GRASS RINGS	FIRE TRUCK STAGING AREA	
ZJ	4819 SQFT		ZOYSIA JAPONICA	ZOYSIA GRASS	SOD

SHRUBS & GROUNDCOVERS



ACROSTICJUM AUREUM
SWAMP FERN



CHRYSOBALANUS ICACO
COCOPLUM



ERONDEA LITTORALIS
GOLDEN CREEPER



MONSTERA DELICIOSA
SWISS CHEESE PLANT



SOPHORA TOMENTOSA
NECKLACE POD

GRASS



SERENOA REPENS
SILVER SAW PALMETTO



TRIPSACUM DACTYLOIDES
FAKAHATCHEE



ZOYSIA JAPONICA
ZOYSIA GRASS



Stantec Architecture Inc. - AA26000733
Andrew Burnett Lic. # AR98495
Adriana Jaegerman Lic. # 72428

Stantec Architecture Inc.
One Biscayne Tower Suite 1670
2 South Biscayne Boulevard
Miami, FL 33131-1804
Tel: (305) 482-8700 / Fax: (305) 482-8770

DRB FINAL SUBMITTAL

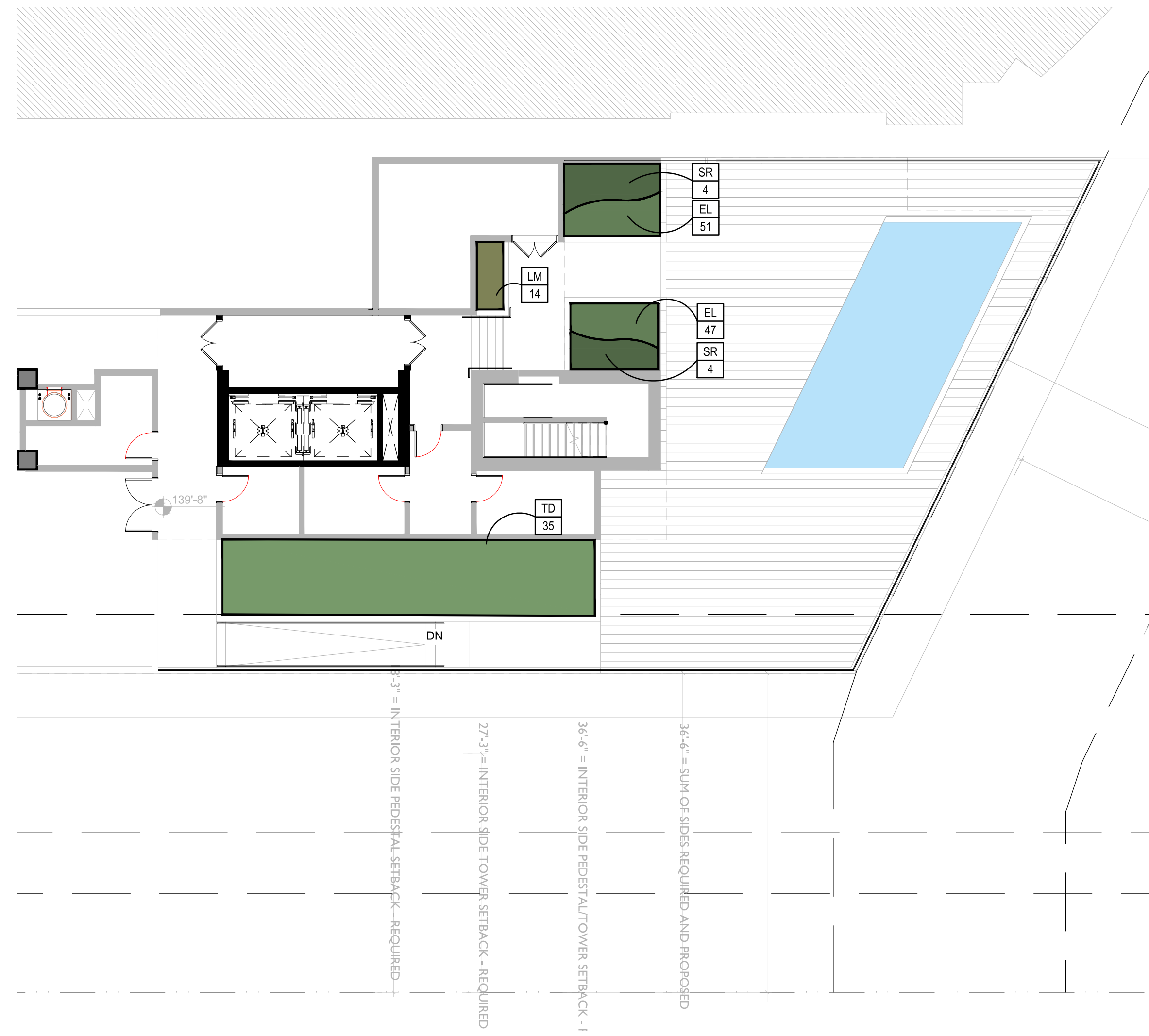
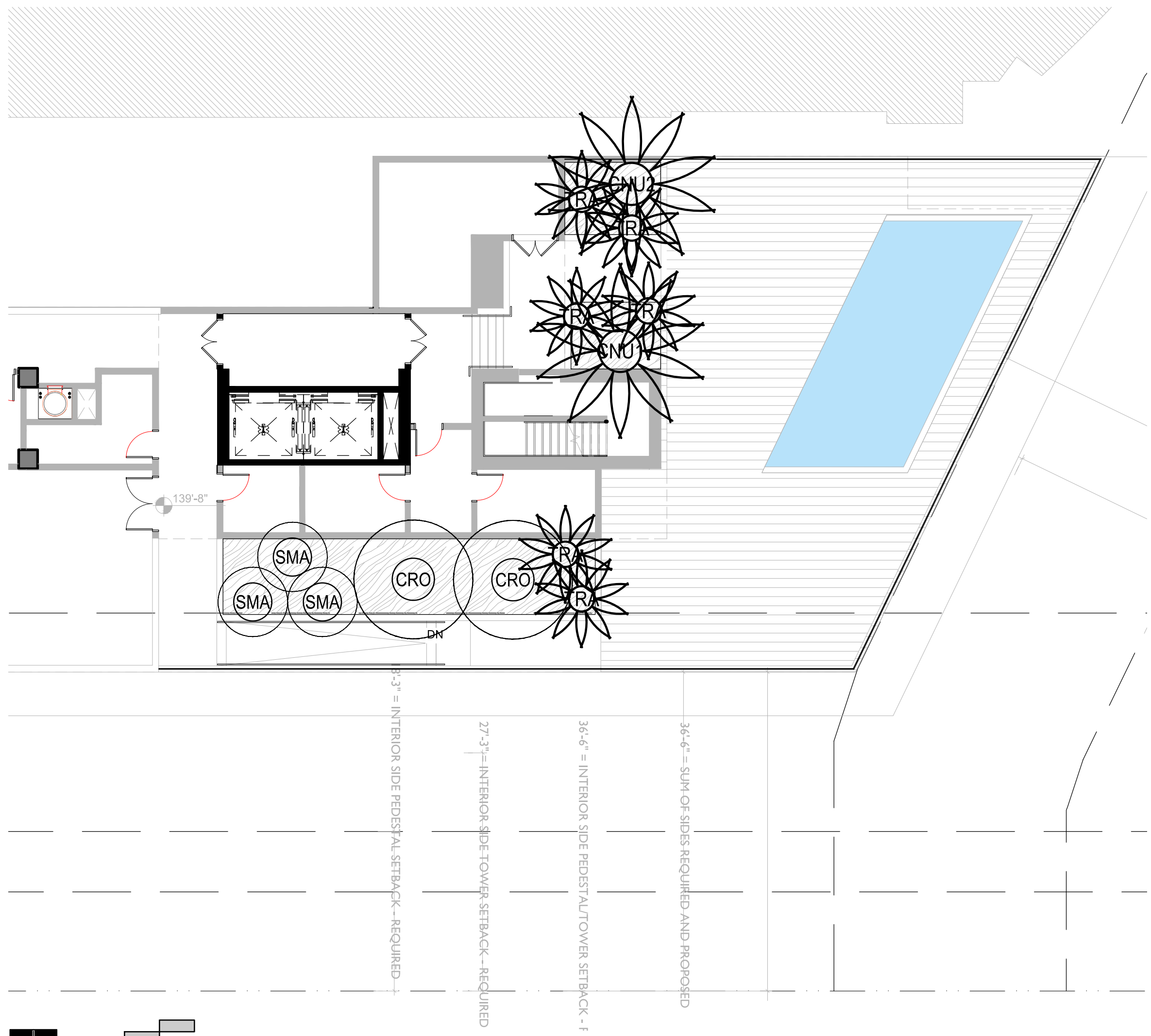
04.05.2021

LAND
7294 NW 1st COURT, MIAMI, FL 33150
614.439.4895 / WWW.LAND.DESIGN

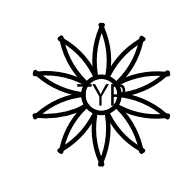
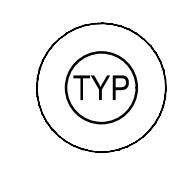
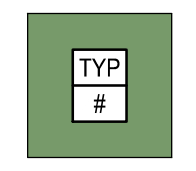
Copyright Reserved

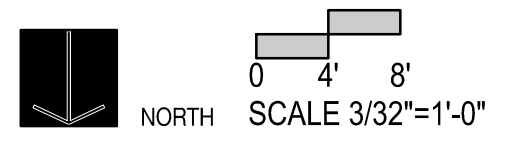
L-400.1

Note: When printed on 11 x 17 paper scale is halved



PLANTING LEGEND

-  PROPOSED PALM
-  PROPOSED TREE
-  PROPOSED GROUNDCOVER



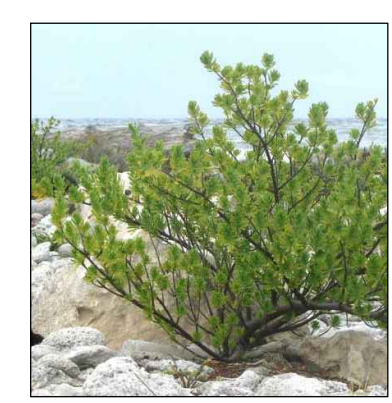
PLANTING SCHEDULE

TYPE	ABR.	QUANTITY	BOTANICAL NAME	COMMON NAME	SPECIFICATIONS
TREES					
	CRO	2	CLUSIA ROSEA	AUTOGRAPH TREE	65 GAL / 12"-14" OA
	SMA	3	SURIANA MARITIMA	BAY CEDAR	45 GAL / 3" DBH / 14' HT MIN
PALMS					
	CNU1	1	COCOS NUCIFERA	COCONUT PALM	FG 20' CT
	CNU2	1	COCOS NUCIFERA	COCONUT PALM	FG 25' CT
	TRA	6	THRINAX RADIATA	TATCH PALM	FG 10' CT
SHRUBS & GROUNDCOVERS					
	EL	98	ERNODEA LITTORALIS	GOLDEN CREEPER	1 GAL / 12" O.C.
	LM	14	LIRIOPE MUSCARI	LILYTURF	1 GAL / 18" O.C.
	SR	8	SERENOA REPENS	SILVER SAW PALMETTO	7 GAL / 48" O.C.
	TD	35	TRIPSACUM DACTYLOIDES	FAKAHATCHEE	3 GAL / 42" O.C.

TREES

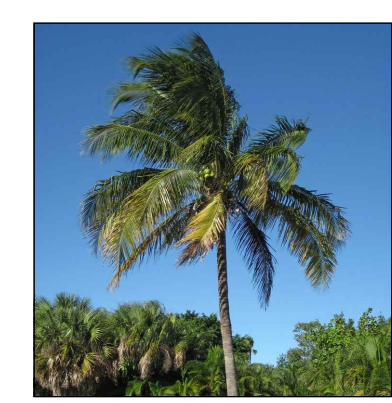


CLUSIA ROSEA
AUTOGRAPH TREE



SURIANA MARITIMA
BAY CEDAR

PALMS



COCOS NUCIFERA
COCONUT PALM



THRINAX RADIATA
TATCH PALM

SHRUBS & GROUNDCOVERS



ERNODEA LITTORALIS
GOLDEN CREEPER



LIRIOPE MUSCARI
LILYTURF



SERENOA REPENS
SILVER SAW PALMETTO

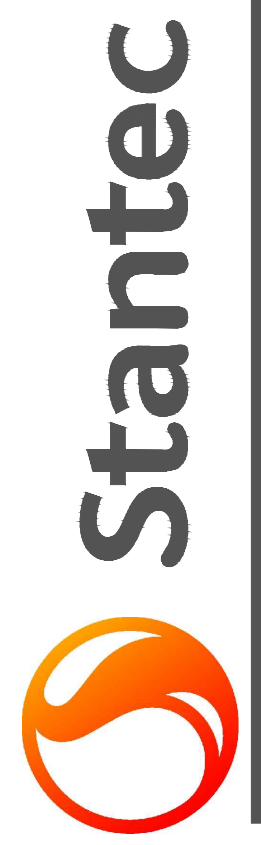


TRIPSACUM DACTYLOIDES
FAKAHATCHEE

PLANTING PLAN
ROOF LEVEL

FLAMINGO
1420 BAY ROAD, MIAMI BEACH

Stantec Architecture Inc - AA26000733
Andrew Burnett Lic. # AR98495
Adriana Jaegerman Lic. # 72428



Stantec Architecture Inc.
One Biscayne Tower Suite 1670
2 South Biscayne Boulevard
Miami, FL 33131-1804
Tel: (305) 482-8700 / Fax: (305) 482-8770

DRB FINAL SUBMITTAL

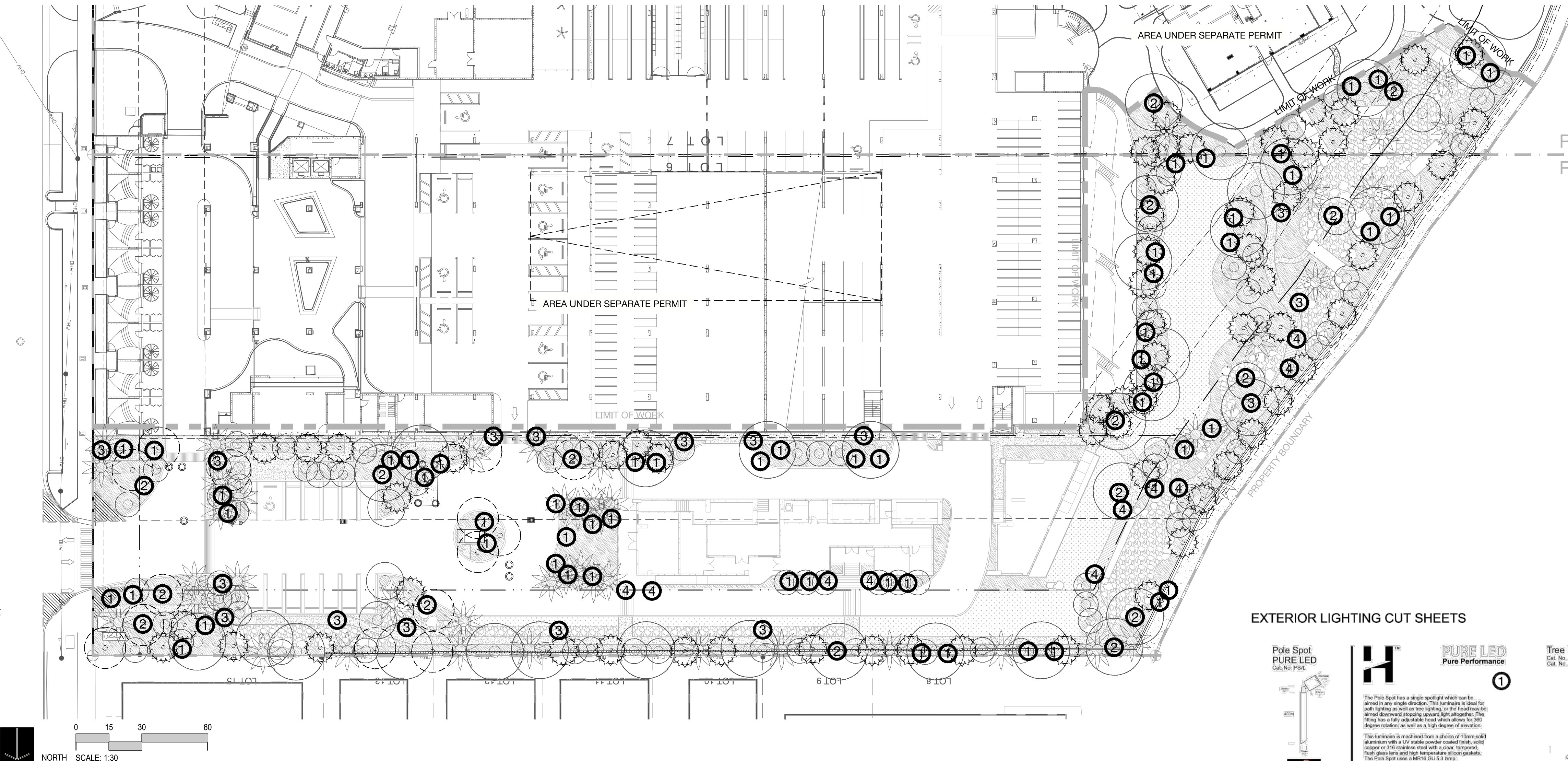
04.05.2021

LAND
7294 NW 1st COURT, MIAMI, FL 33150
614.439.4885 / WWW.LAND.DESIGN

Copyright Reserved

L-400.2

Note: When printed on 11 x 17 paper scale is halved



EXTERIOR LIGHTING NOTES

1. THE EXTERIOR LIGHTING PLAN ILLUSTRATES FIXTURE LOCATION AND TYPE SOLELY. ALL ELECTRICAL LOADS, WIRING, AND CALCULATIONS ARE BY OTHERS.
2. CONTRACTOR TO COORDINATE WITH CLIENT AND LANDSCAPE ARCHITECT CONTROL SYSTEM FOR EXTERIOR LIGHTING.
3. THE CONTRACTOR TO PROVIDE SLEEVES AND CONDUIT AS NEEDED FOR ALL EXTERIOR LIGHTING FIXTURES..
4. THE CONTRACTOR IS TO STAKE ALL EXTERIOR LIGHTING FIXTURES FOR LANDSCAPE ARCHITECT REVIEW.
5. ALL EXTERIOR FIXTURES TO BE INSTALLED TO PREVENT GLARE AND UNWANTED DIRECTED LIGHT. CONTRACTOR TO ENSURE ALL FIXTURES DO NOT DIRECT LIGHT ONTO ADJACENT PROPERTIES.
6. THE CONTRACTOR IS TO NOTIFY THE LANDSCAPE ARCHITECT TWO WEEKS IN ADVANCE OF SCHEDULED EXTERIOR LIGHT INSTALLATION. UPON COMPLETION OF THE EXTERIOR LIGHT INSTALLATION, CONTRACTOR TO PROVIDE NIGHTTIME WALK THROUGH WITH LANDSCAPE ARCHITECT FOR FINAL REVIEW.

EXTERIOR LIGHTING SCHEDULE

SYMBOL	QUANTITY	TYPE	MANUFACTURER	SPECIFICATION NUMBER	LAMP	NOTES
①		UPLIGHT	HUNZA	PS/L D10 60 4 CJK150 SS	LED	12V 100mA
②		DOWNLIGHT	HUNZA	SL/L D10 60 4 CJK150 SS	LED	12V 1000mA
③		WELL LIGHT	HUNZA	WW/L S 3 FM COP	LED	12V 700mA
④		DECK LIGHT	HUNZA	WW/L S 3 FM COP	LED	12V 700mA

EXTERIOR LIGHTING CUT SHEETS

Pole Spot PURE LED
Cat. No. PS/L

The Pole Spot uses a single spotlight which can be aimed in any angle direction. This luminaire is ideal for path lighting as well as tree lighting, or the road may be aimed downwards sloping upward light altogether. The fitting has a fully adjustable head which allows for 300 degree rotation, as well as a high degree of elevation.

This luminaire is machined from a choice of 10mm solid aluminium with a UV stable powder coated finish, gold copper or 316 stainless steel with a clear, tempered, tough glass lens and high temperature silicon gaskets. The Pole Spot uses a M516 GU 5.3 lamp.

The Hunza PURE LED system uses Cree MT-G chips for maximum performance and long life. Power supply options include a choice of 12 volt integral or a remote (remote conversion) driver. The PURE LED system incorporates HUNZA's Plug and Play system for easy replacement of either the LED module or integral driver in the field. Four beam angles, and a choice of a Warm or Cool White colour temperatures are available.

Ordering Information

Luminaire	Driver/Kit	Lens	Colour Temp.	Accessories	Material/Finish
PS/L S Reflex	12 15T 1.8 Lens	3 3000K	CRK150 - Cable Joint Kit	BC - Black	BC - Black
D10 12V 1000mA	30 38 Reflector	4 4000K	LG - Glass Guard	BN - Bronze	BN - Bronze
D10 12V 1000mA	30 38 Reflector	4 4000K	LG - Glass Guard	DN - Green	DN - Green
			HQ2 - New Cast Louvre	EM - Silver	EM - Silver
			AD - New Cast Louvre Adaptor	GR - Grey	GR - Grey
				OC - Oak	OC - Oak
				PK - Pink	PK - Pink
				CP - Copper	CP - Copper
				SS 316 Stainless	SS 316 Stainless

HUNZA FACTORY: 128 Biscayne Ave, Suite 100, Miami, FL 33139
INTERNATIONAL CONTACTS: HUNZA LIGHTING, 128 Biscayne Ave, Suite 100, Miami, FL 33139

Tree Mount Kit
Cat. No. SSM/T
Cat. No. SSM/T/S

The Tree Mount Kit enables a NPS Spot to be mounted onto a tree to create moon lighting effects. A cable connection can be made at the rear of the fixture. The kit consists of a mounting dome and three 316 stainless steel bolts. The bolts install to the dome 42mm (1 1/2") out from the tree's surface, which allows the tree to grow without causing any harm.

An alternative mounting option is the Tree Mount Kit Rubber Strap. This kit consists of a mounting dome and a one metre adjustable rubber strap, which expands as the tree grows.

Both kits come with a female adaptor for NPS Binned.

Ordering Information

Luminaire Type	Material	Accessories
SSM/T - Tree Mount Kit	Black Glass-Finish	CRK150 - Cable Joint Kit
SSM/T/S - Tree Mount Kit Rubber Strap	Polycarbonate	

Ordering Example: SSM/T - Tree Mount Kit in Black (Accessories ordered separately)

HUNZA FACTORY: 128 Biscayne Ave, Suite 100, Miami, FL 33139
INTERNATIONAL CONTACTS: HUNZA LIGHTING, 128 Biscayne Ave, Suite 100, Miami, FL 33139

HUNZA SAFE TOUCH
ST100

SPECIFICATIONS IK10 IP57 CE

LED Chip	Cree CMA 1000lm
Common Output	1000lm
Luminaire Per Head	100 Lumens @ 30° beam angle
Colour Temperature	2700K, 3000K, 4000K
Beam Angle	30°, 35°, 40°, 50°
Material	Aluminium 12 year finish
Standards	IEC 60598-2-22, IEC 60598-2-23, IEC 60598-2-24

PRODUCT CONFIGURATION
Cat. No. ST100

Phase III in appropriate cases into beam profile

HUNZA FACTORY: 128 Biscayne Ave, Suite 100, Miami, FL 33139
INTERNATIONAL CONTACTS: HUNZA LIGHTING, 128 Biscayne Ave, Suite 100, Miami, FL 33139

HUNZA PURELED
Flush Floor Lite

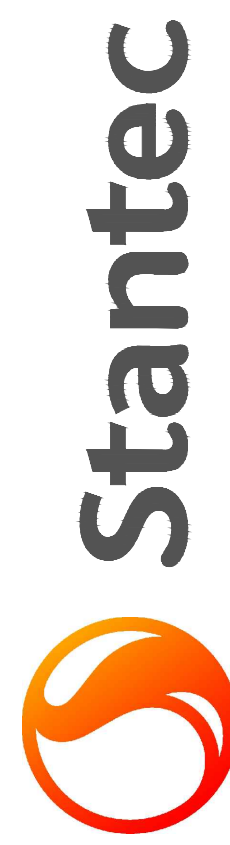
PURELED SPECIFICATIONS CE

LED Chip	Cree CMA 1000lm
Common Output	1000lm
Luminaire Per Head	100 Lumens @ 30° beam angle
Colour Temperature	2700K, 3000K, 4000K
Beam Angle	30°, 35°, 40°, 50°
Material	Aluminium 12 year finish
Standards	IEC 60598-2-22, IEC 60598-2-23, IEC 60598-2-24

PRODUCT CONFIGURATION
Cat. No. PFL/L

Phase III in appropriate cases into beam profile

HUNZA FACTORY: 128 Biscayne Ave, Suite 100, Miami, FL 33139
INTERNATIONAL CONTACTS: HUNZA LIGHTING, 128 Biscayne Ave, Suite 100, Miami, FL 33139



Stantec Architecture Inc. - AA26000733
Andrew Burnett Lic. # AR98495
Adriana Jaegerman Lic. # 72428

Stantec Architecture Inc.
One Biscayne Tower Suite 1670
2 South Biscayne Boulevard
Miami, FL 33131-1804
Tel: (305) 482-8700 / Fax: (305) 482-8770

DRB FINAL SUBMITTAL
04.05.2021



7294 NW 1st COURT, MIAMI, FL 33150
614.439.4895 / WWW.LAND.DESIGN

Copyright Reserved

L-800.1

Note: When printed on 11 x 17 paper scale is halved