

THE BASS

The Bass Museum of Art

Historic Preservation Board – Final Submittal – April 5, 2021

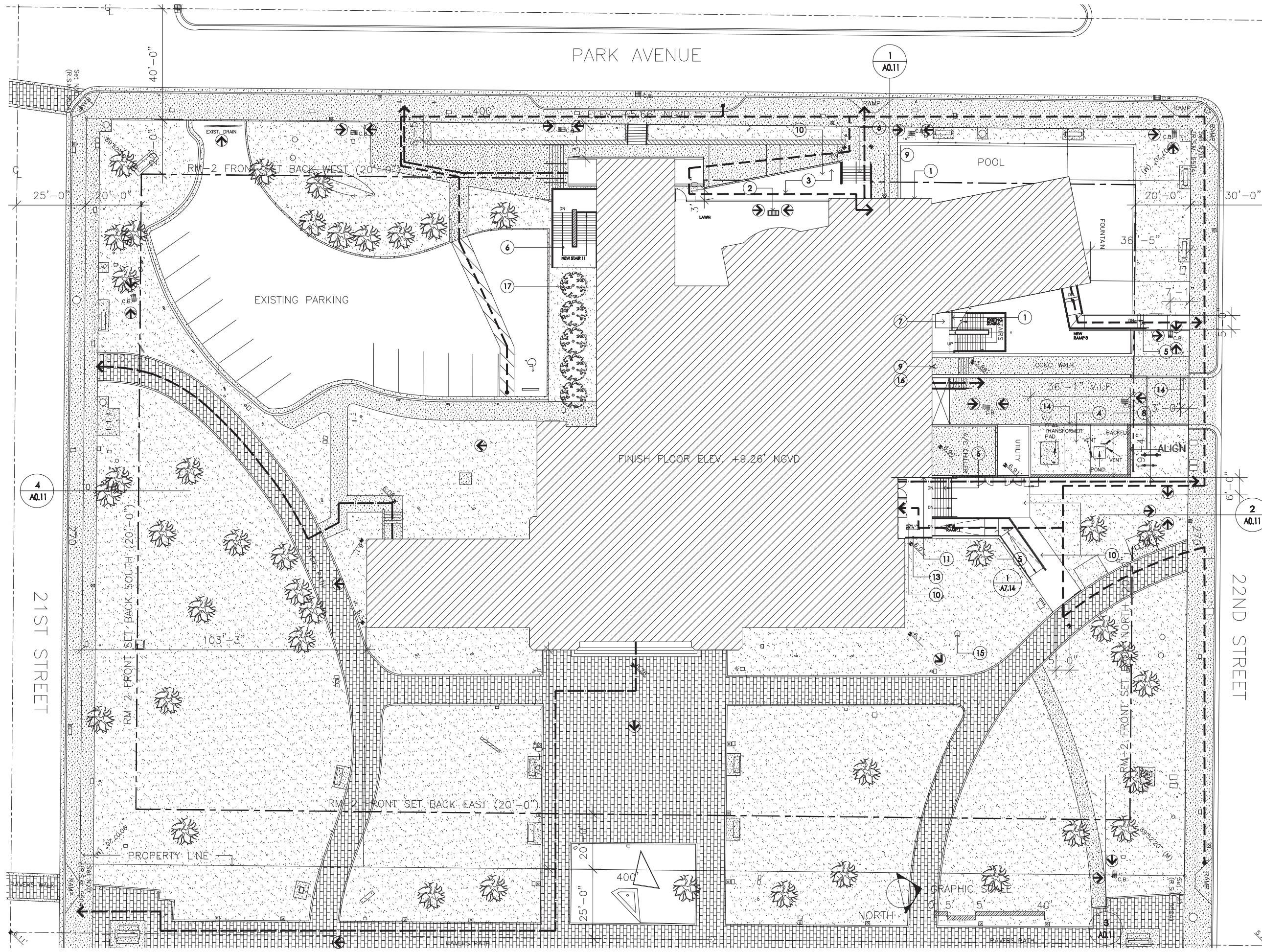
Scope of Work

- To continue to display a neon sculpture installation, *Eternity Now*, 2015 by artist Sylvie Fleury on top of the museum's façade for up to 3 years.

Exhibit 9d – Context Location Plan



PARK AVENUE



GENERAL NOTE:

⬅️ SURFACE RUN OFF SHALL BE DIRECTED AWAY FROM STRUCTURE AND CONTAINED ON SITE

LEGEND:

- NEW SITE WORK
- ⬅️ HANDICAPPED ROUTE
- ➡️ EGRESS ROUTE
- FD NEW FLOOR DRAIN
- C.B. EXIST. CATCH BASIN

KEYNOTES:

- 1 NEW POND CURB
- 2 RELOCATE EXISTING CATCH BASIN PROVIDE NEW OR REPAIR EXISTING CONNECTION
- 3 NEW CONCRETE TERRACE. SEE DETAIL AND STRUCTURAL DRAWINGS FOR ADDITIONAL SPECIFICATIONS
- 4 NEW CONCRETE WALK. SEE DETAIL AND STRUCTURAL DRAWINGS FOR ADDITIONAL SPECIFICATIONS. MAKE FLUSH TO CURB AT DRIVEWAY
- 5 NEW CONCRETE RAMP. SEE DETAIL AND STRUCTURAL DRAWINGS FOR ADDITIONAL SPECIFICATIONS
- 6 NEW CONCRETE STAIR. SEE DETAIL AND STRUCTURAL DRAWINGS FOR ADDITIONAL SPECIFICATIONS
- 7 NEW CONCRETE LANDING. SEE STRUCTURAL DRAWINGS. COLOR TO MATCH ADJACENT EXISTING CONCRETE
- 8 NEW CMU AND PLASTER WALL MATCH EXISTING
- 9 RELOCATE SIAMSESE HOSE CONNECTION
- 10 NEW DONOR PAVERS TO COMPLY WITH ADA ACCESSIBILITY STANDARDS
- 11 ADA VIDEO INTERCOM, DOOR LOCK RELEASE AND AUTO OPENER.
- 12 RELOCATED EXISTING PLUMBING VAULT
- 13 NEW ENTRY CANOPY
- 14 REMOVE EXIST. CURB. SEE 1
- 15 GREASE EXISTING MANHOLE
- 16 TEST HEADER
- 17 NEW TREE (5 LOCATIONS)

Architect
DAVID GAULD ARCHITECT, PLLC
337 Broome Street, New York, NY 10002
Tel 212- 627-0110

Issue Date
09/01/2017 AS BUILT

SITE PLAN

SEAL & SIGNATURE SCALE 1/16"=1'-0"

Sheet No.

A0.02

Exhibit 9i. Project Site



West 3/8/21



East 3/8/21

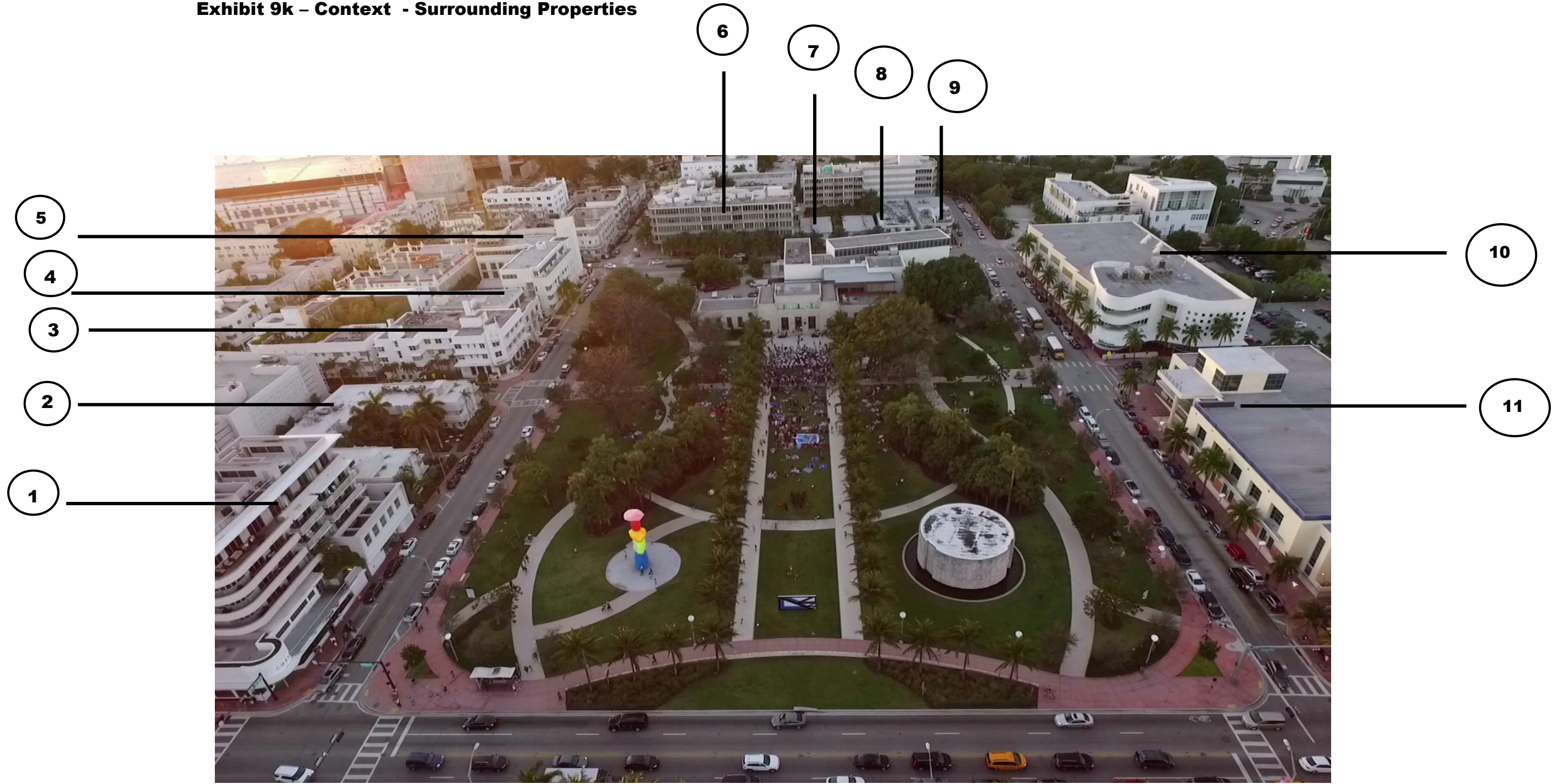


North 3/8/21



South 3/8/21

Exhibit 9k – Context - Surrounding Properties



(1) - 3/8/21



(2) - 3/8/21



(3) - 3/8/21



(4) 3/8/21

(5) - 3/8/21



(6) - 3/8/21



(7) - 3/8/21



(8) - 3/8/21

(9) - 3/8/21



(10) - 3/8/21



(11) - 3/8/21