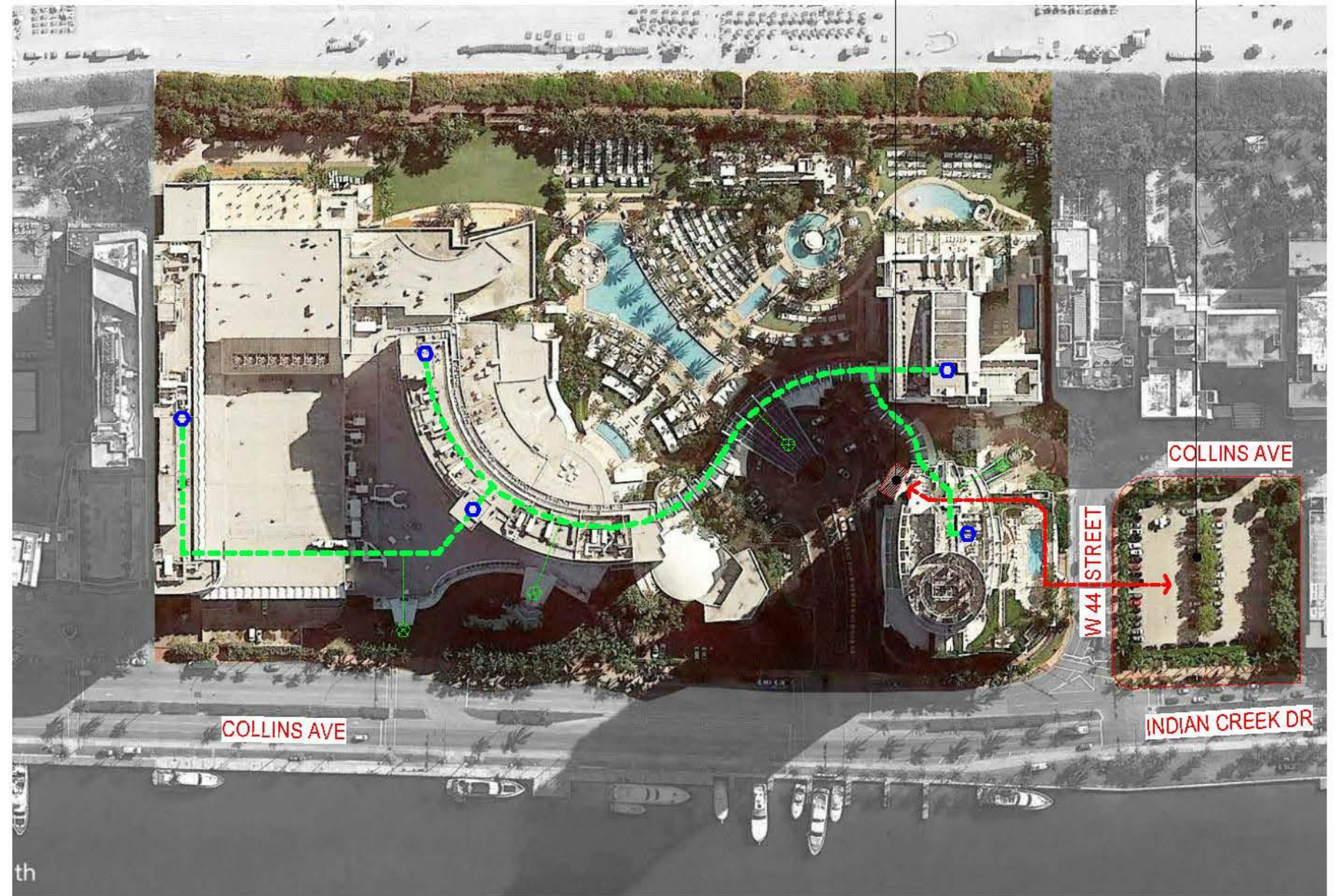


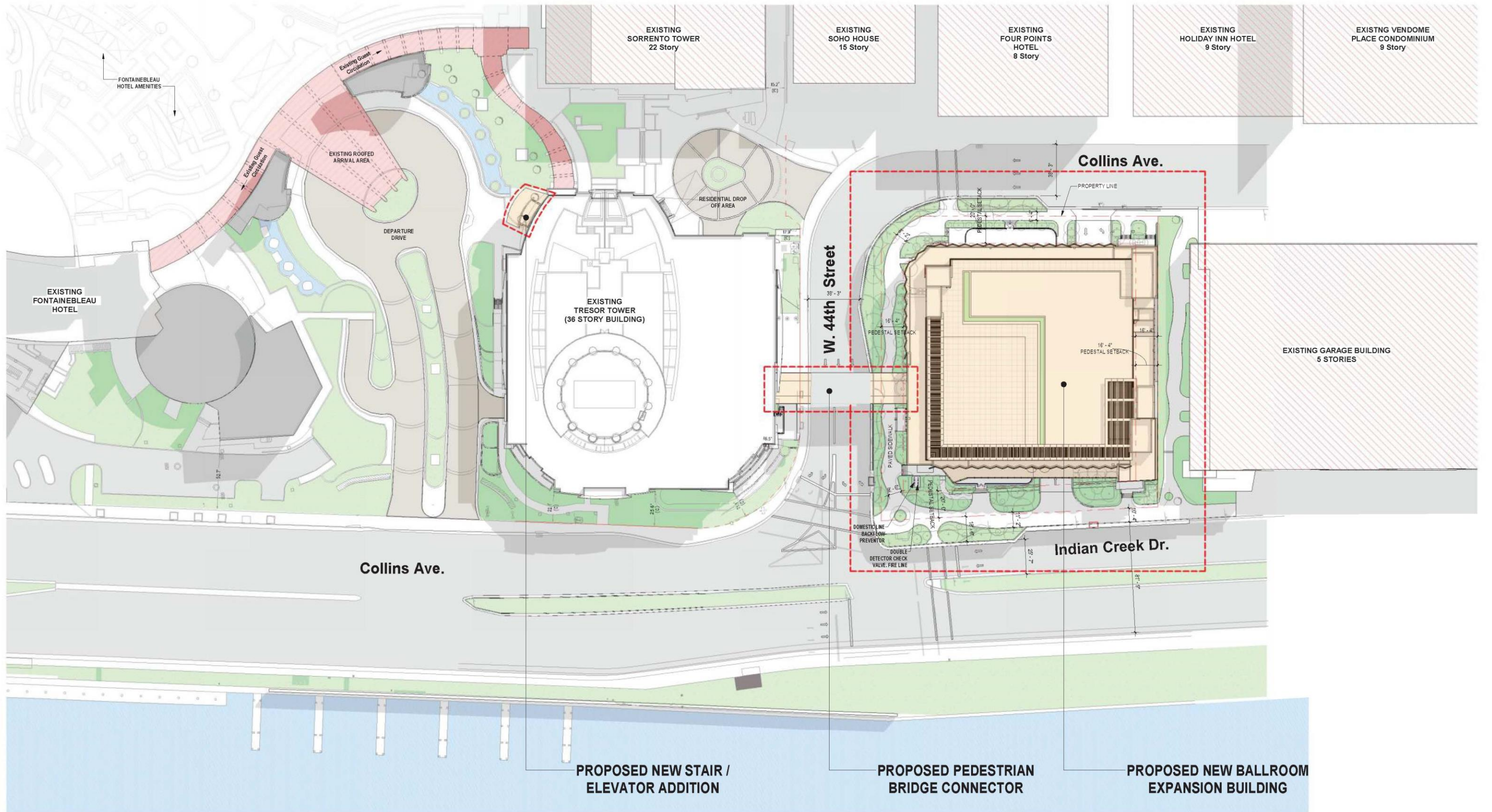
PROJECT SITE
 4441 Collins Ave, Miami Beach, FL 33140
 Fontainebleau Miami Beach, Address

SCALE: 700 FT.

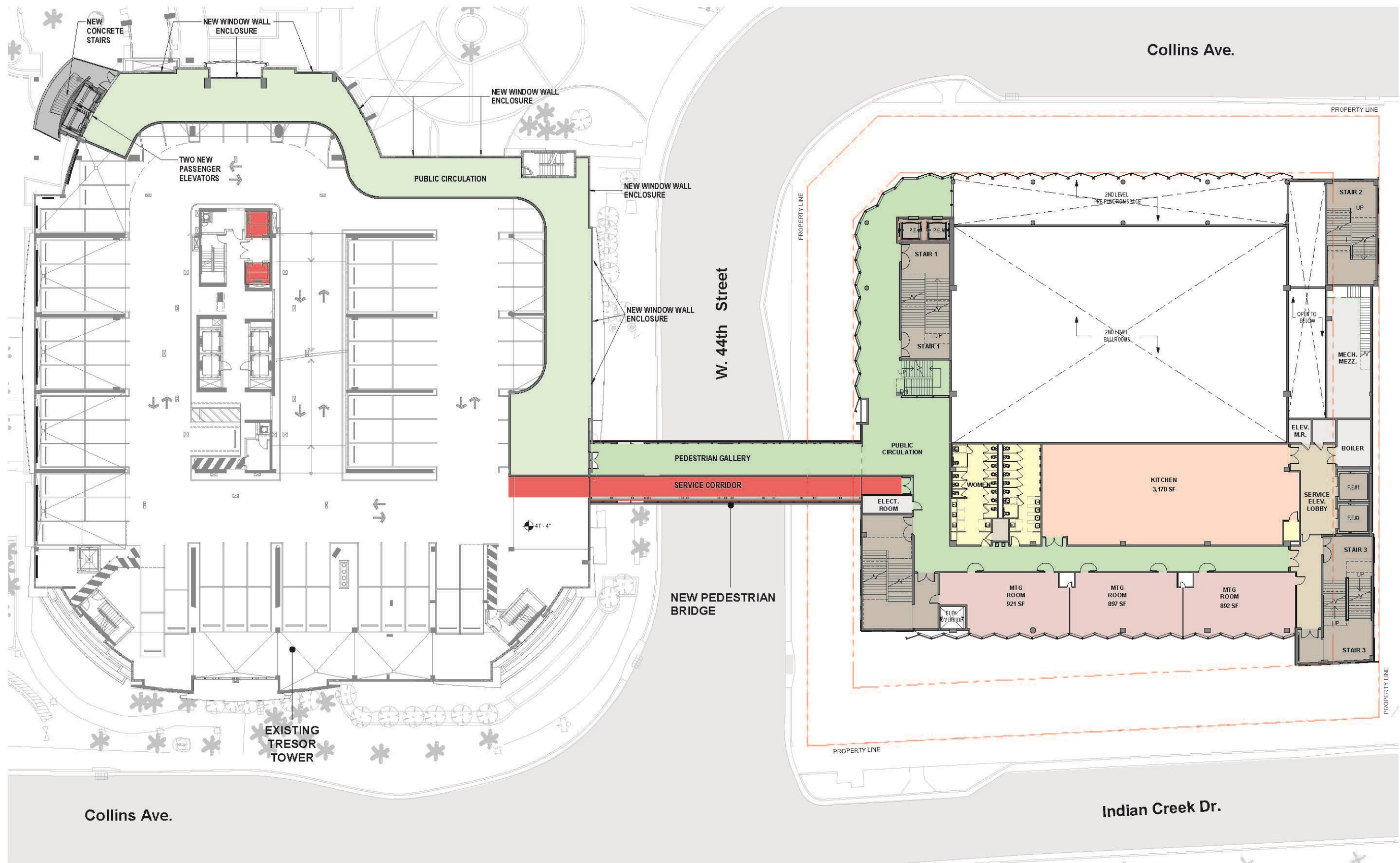
AREA OF PROJECT



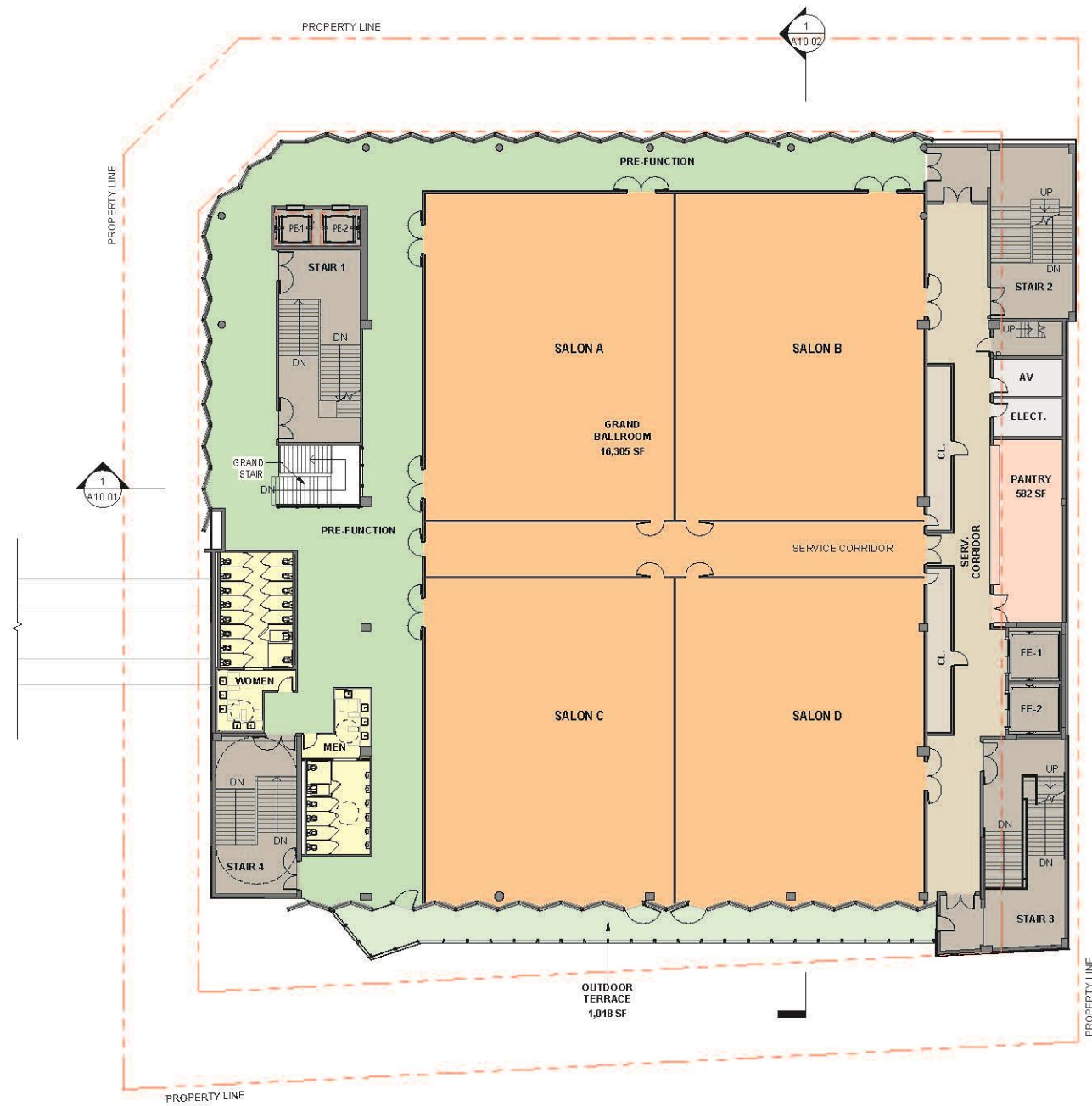
 CONTEXT LOCATION PLAN



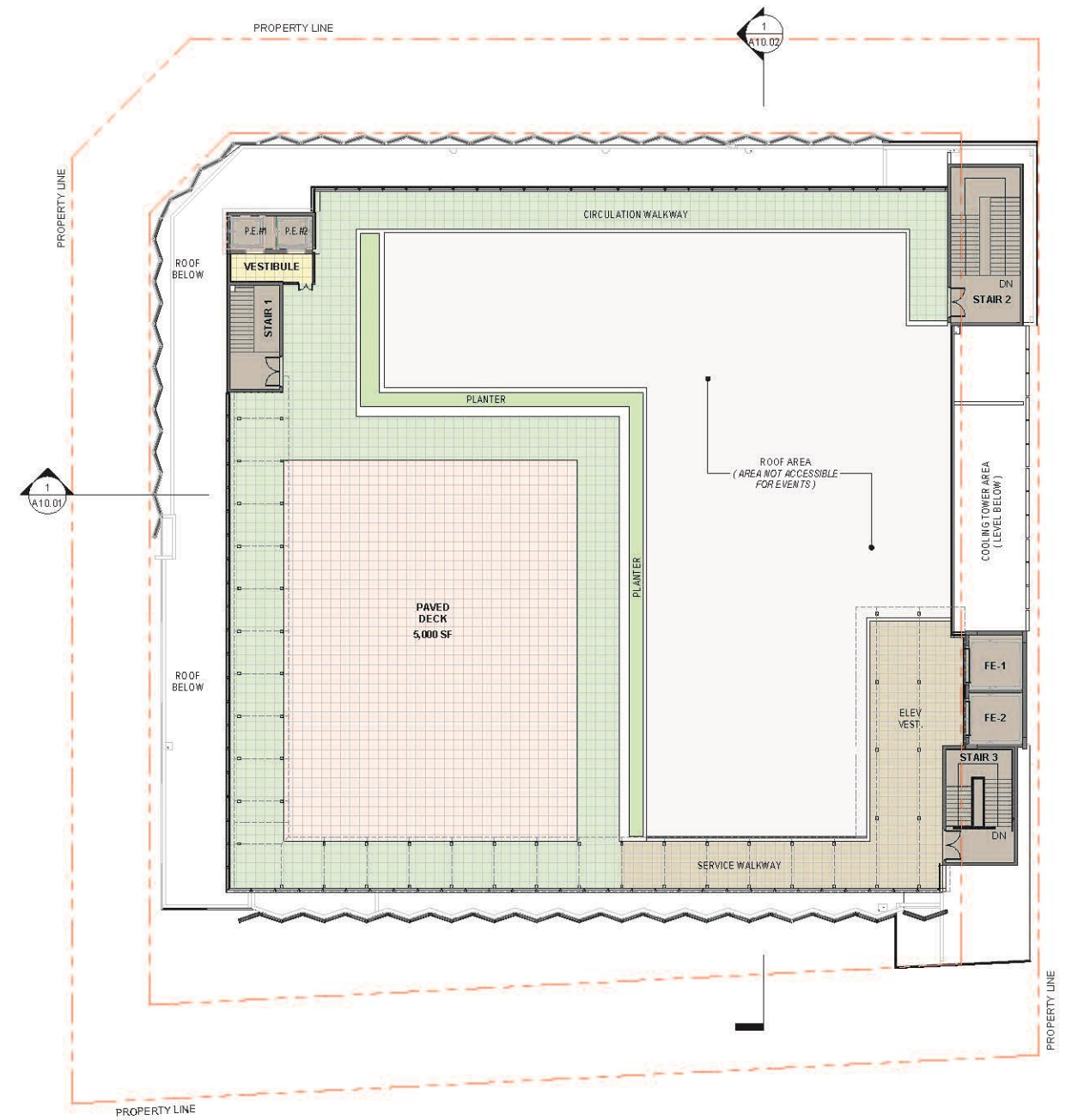
1 SITE PLAN_COLORED
 A04 1/32" = 1'-0"



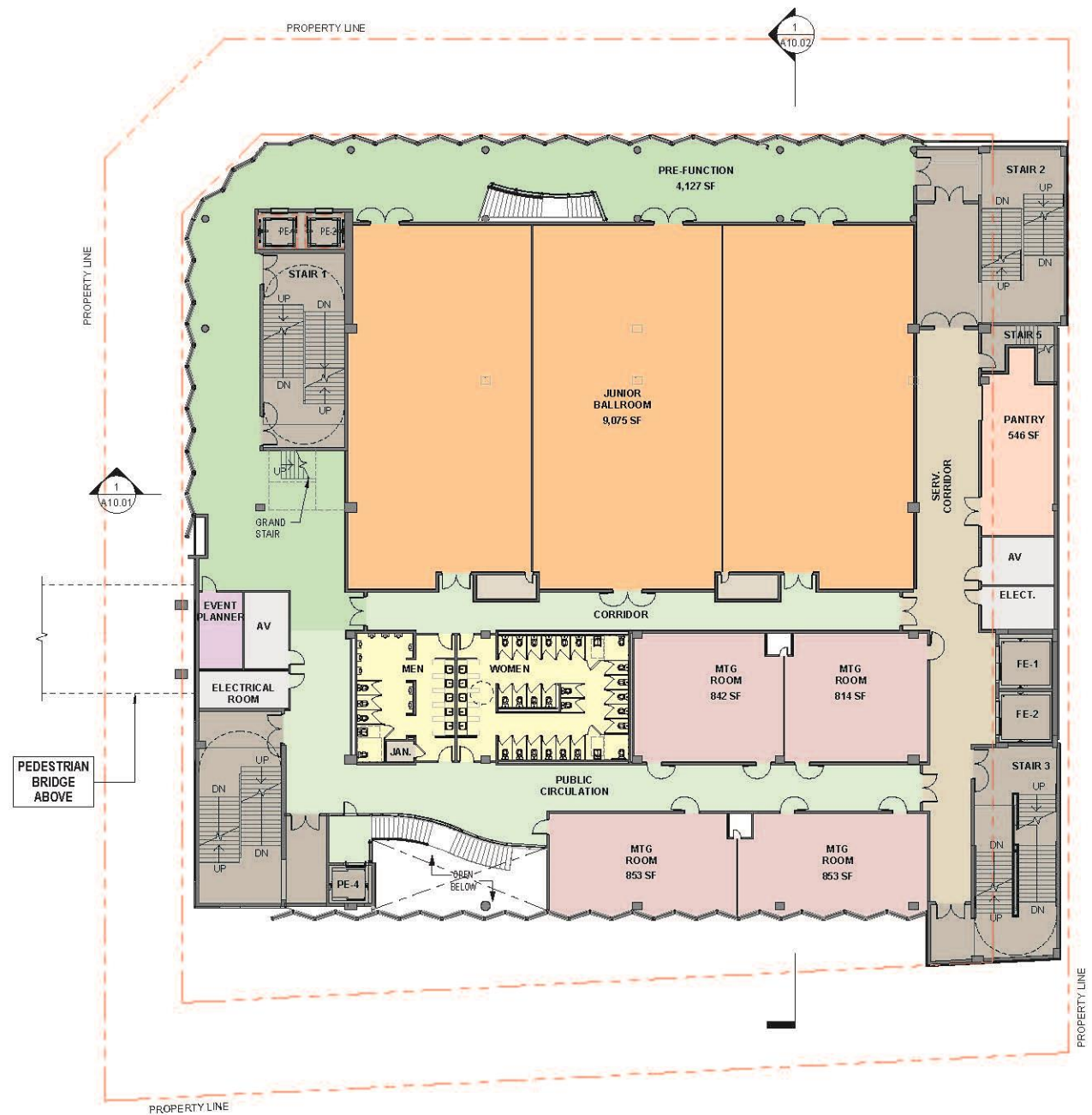
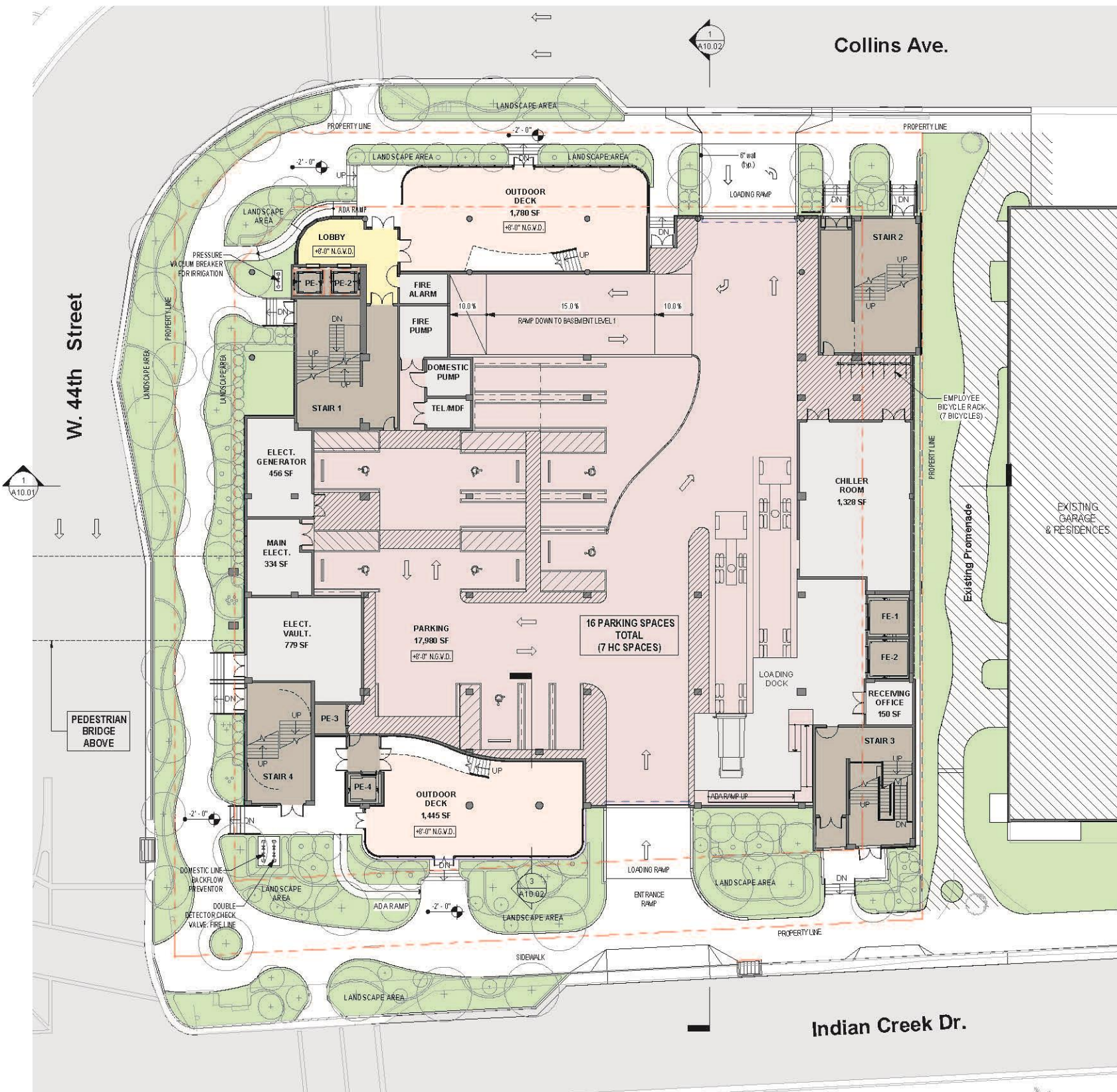
1 3RD LEVEL - OVERALL - FLOOR PLAN
 A07 1/16" = 1'-0"



1
A08
4TH LEVEL - FLOOR PLAN
1/16" = 1'-0"

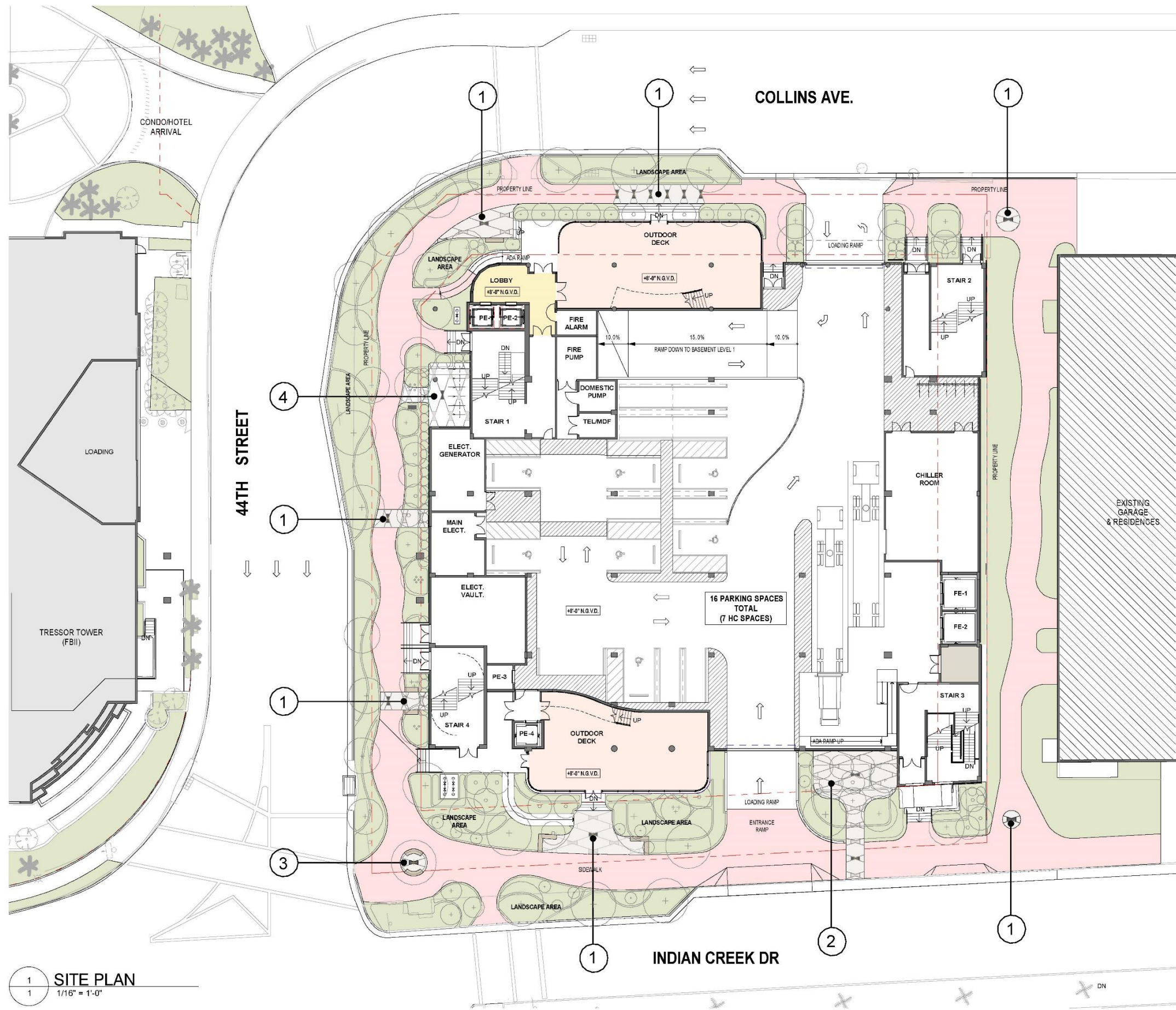


2
A08
ROOF TOP DECK - FLOOR PLAN
1/16" = 1'-0"

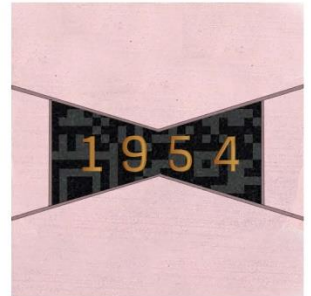


1 GROUND LEVEL - FLOOR PLAN
A09 1/16" = 1'-0"

2 2ND LEVEL - FLOOR PLAN
A09 1/16" = 1'-0"



1 BOWTIE PAVEMENT TRIGGERING AUGMENTED REALITY HISTORICAL VIDEO OF MID CENTURY MODERN MOVEMENT IN THE DISTRICT.



2 "MORRIS LAPIDUS TERRACE". BOWTIE PAVEMENT TRIGGERING AUGMENTED REALITY HISTORICAL NARRATION OF MORRIS LAPIDUS & THE FONTAINEBLEAU HOTEL.

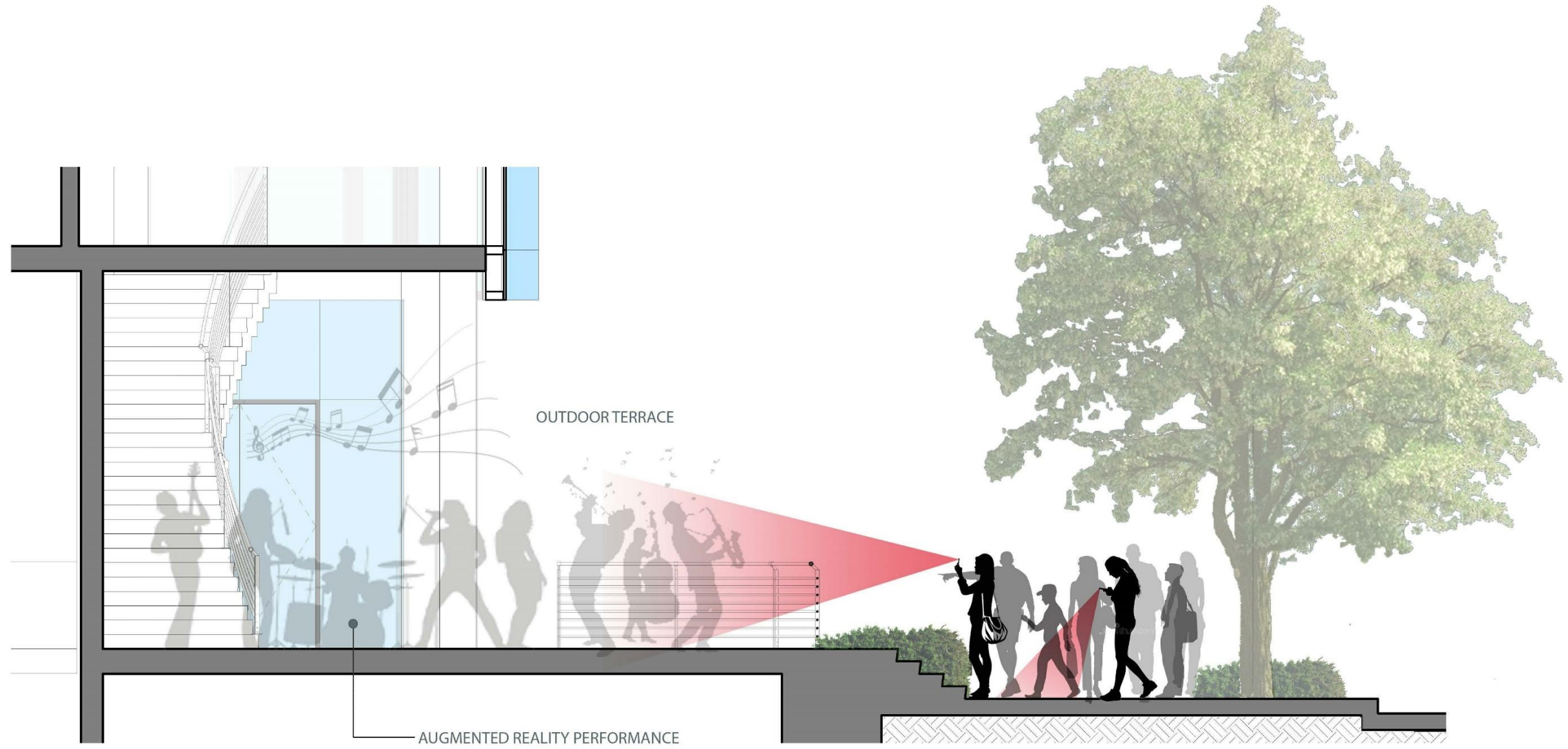
3 DIGITAL INFO KIOSK.



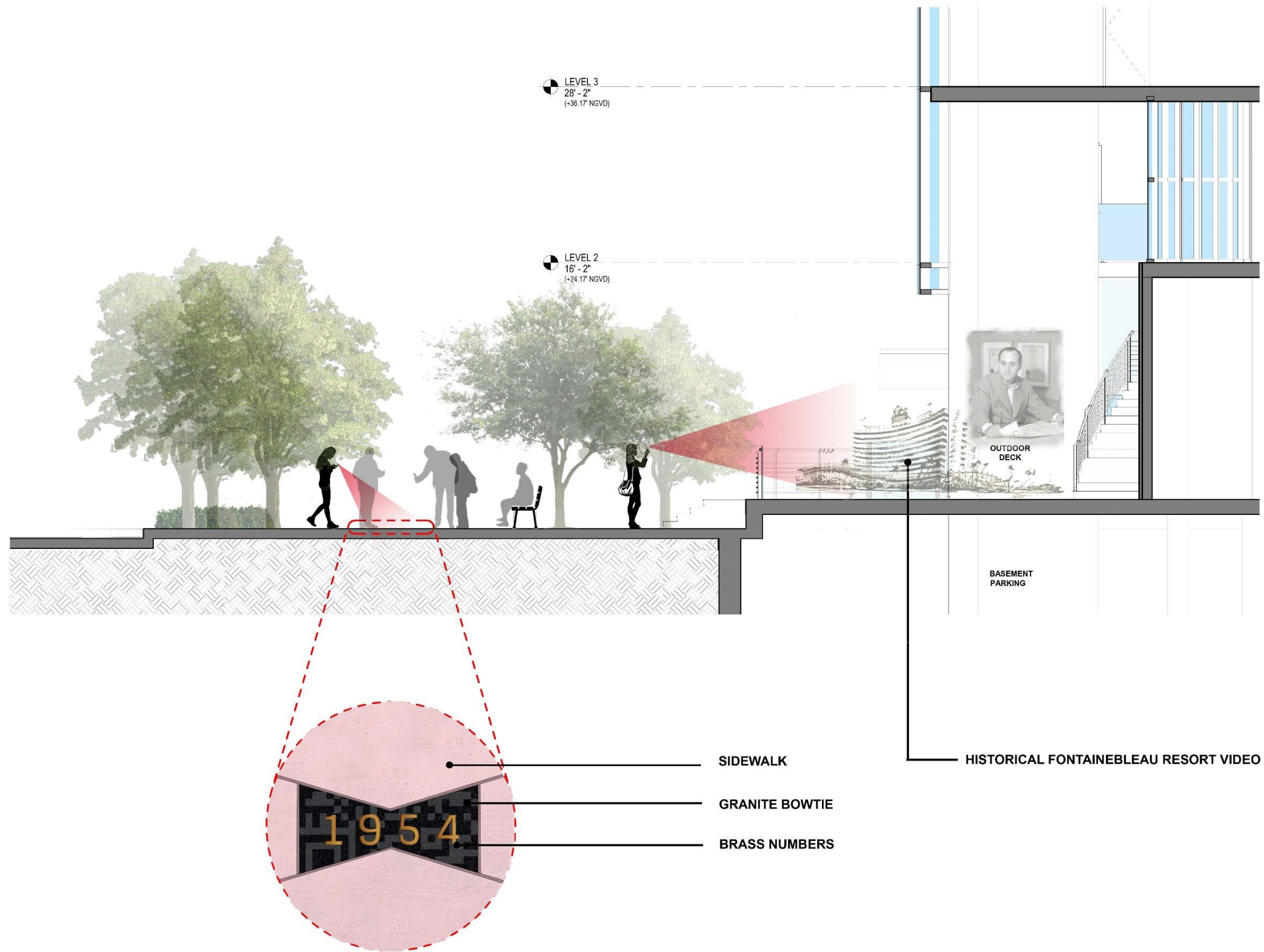
4 BICYCLE PARKING



1 SITE PLAN
1 1/16" = 1'-0"



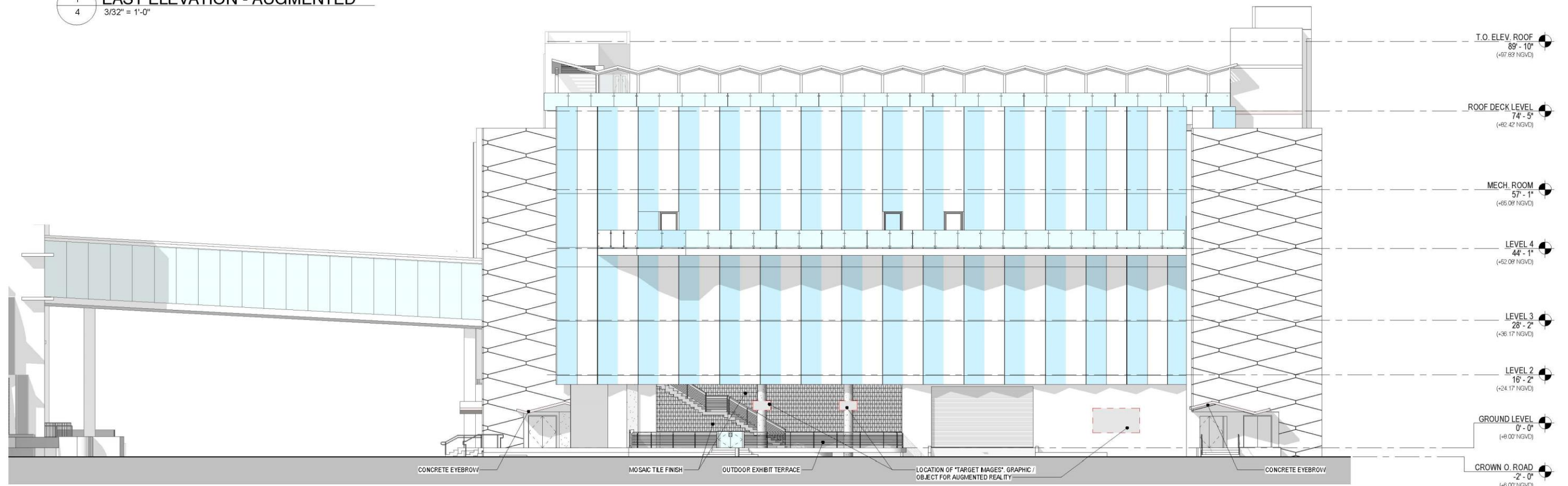
EAST TERRACE SECTION



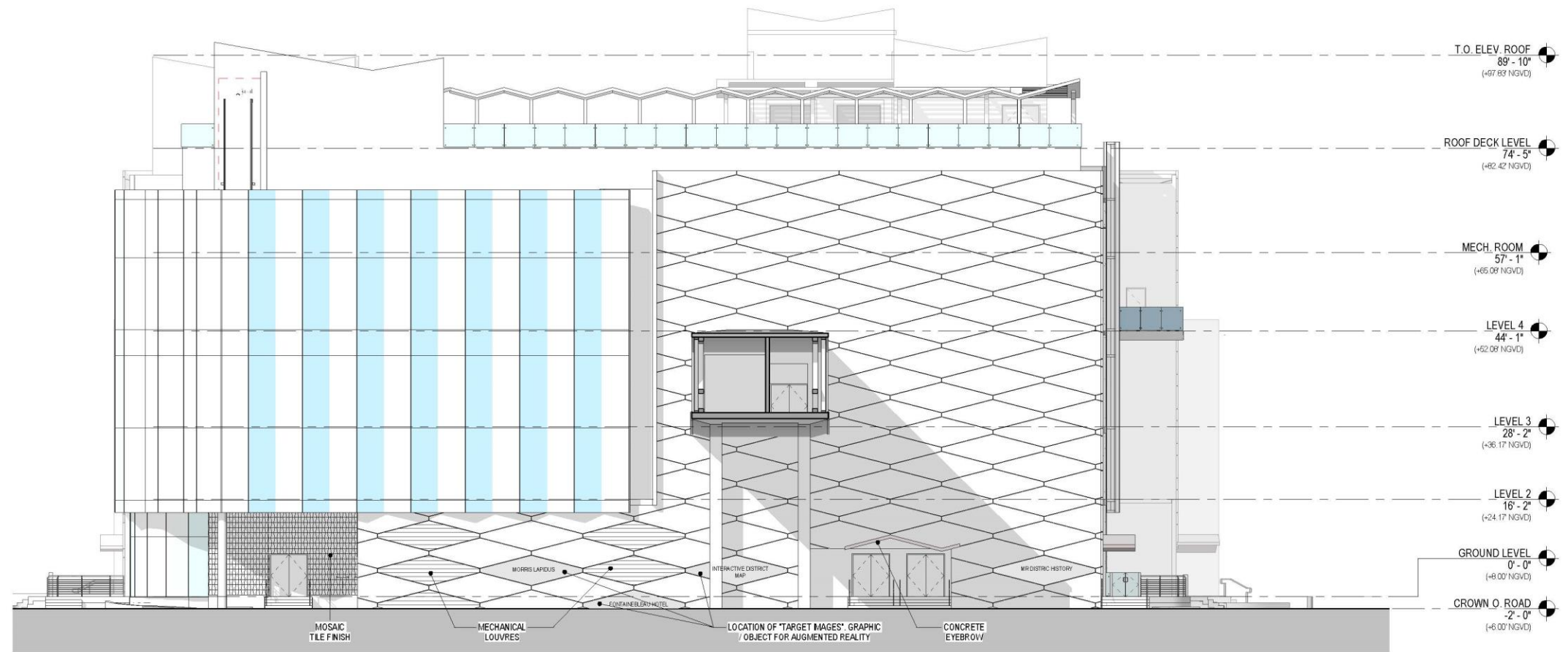
WEST TERRACE SECTION



1 EAST ELEVATION - AUGMENTED
 4 3/32" = 1'-0"



2 WEST ELEVATION - AUGMENTED
 4 3/32" = 1'-0"



1 NORTH ELEVATION - AUGMENTED
5 3/32" = 1'-0"

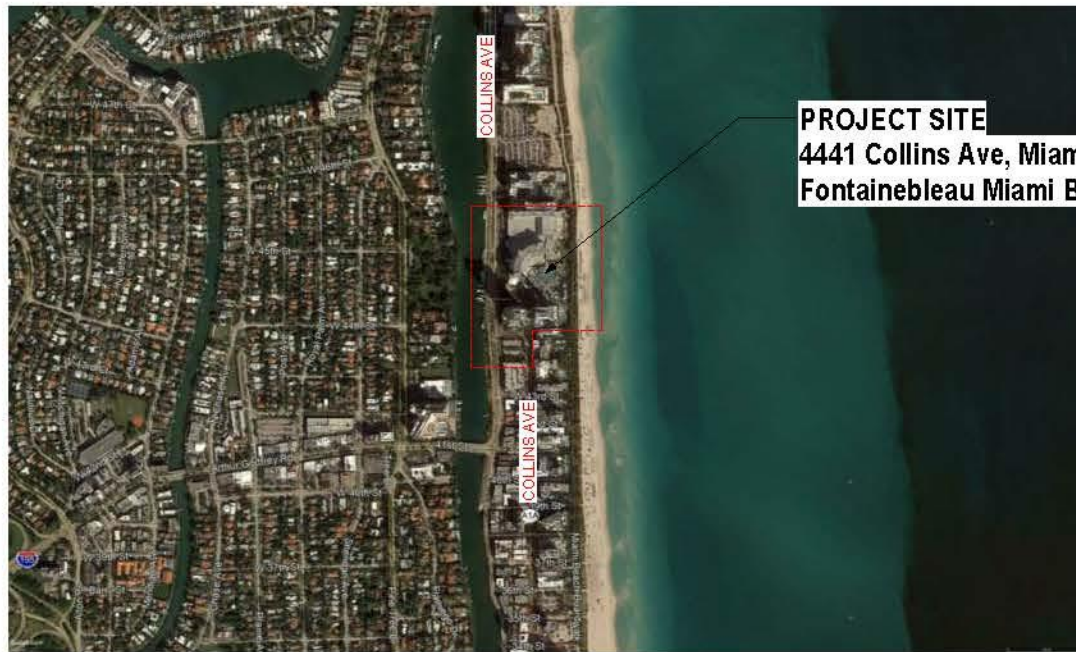


EAST TERRACE RENDERING



WEST TERRACE RENDERING

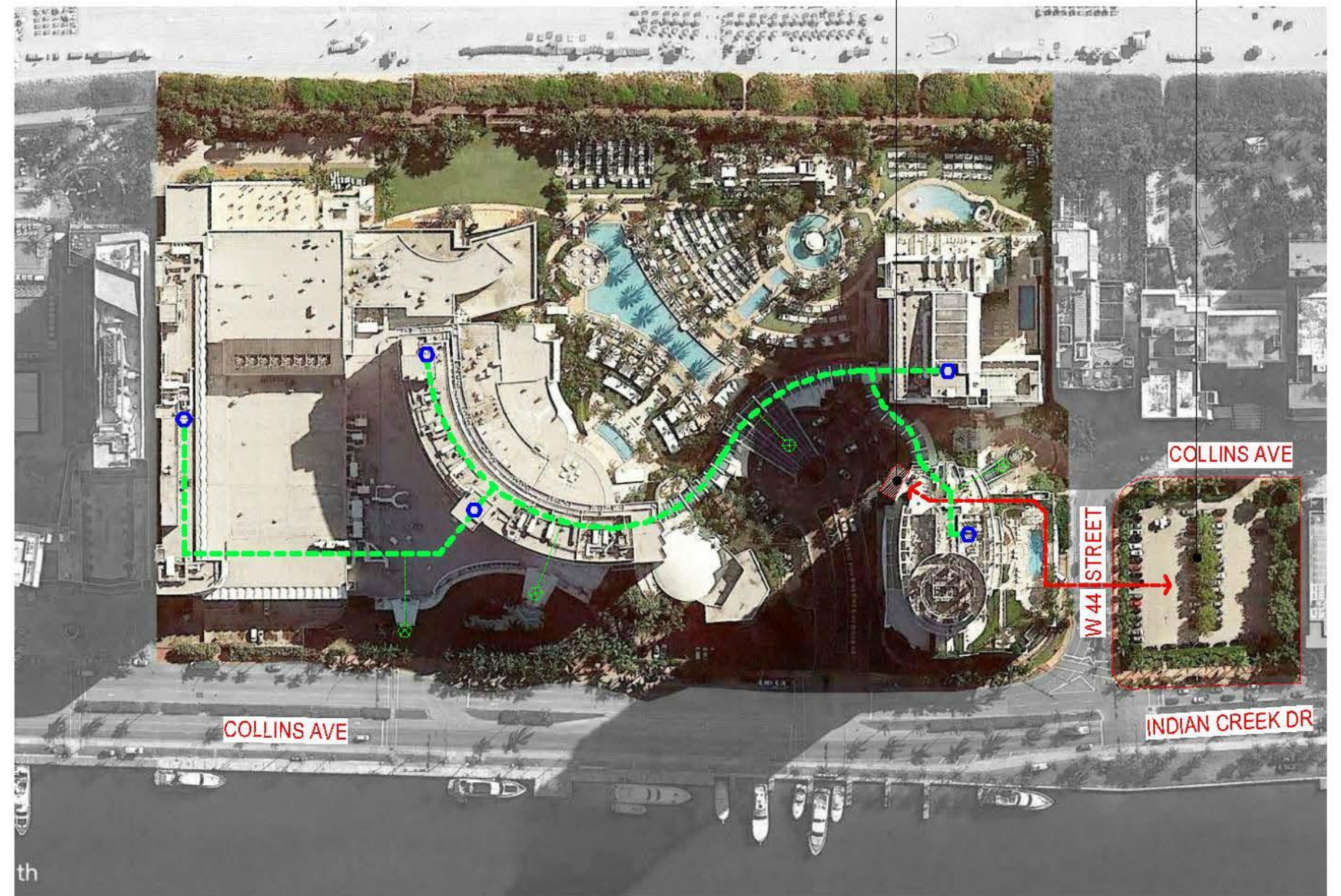
PREVIOUS HPB BOARD PRESENTATION ON
10/13/2020 (FOR REFERENCE ONLY)



PROJECT SITE
 4441 Collins Ave, Miami Beach, FL 33140
 Fontainebleau Miami Beach, Address

SCALE: 700 FT

AREA OF PROJECT



**NEW STAIR / ELEVATORS
 ADDITION PROJECT**

**NEW BALLROOM
 EXPANSION PROJECT**

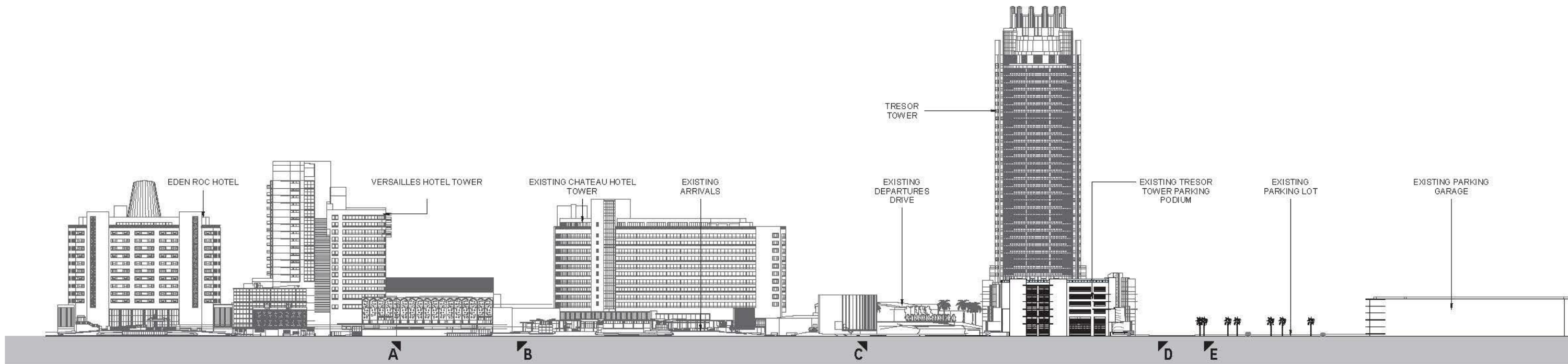
COLLINS AVE

COLLINS AVE

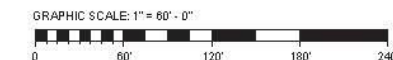
W 44 STREET

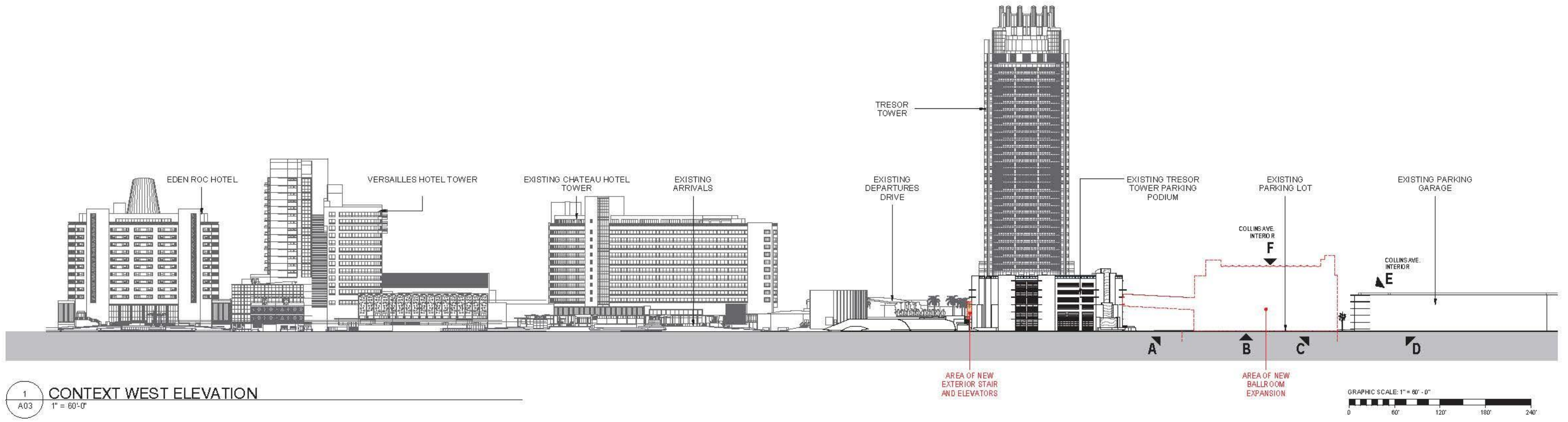
INDIAN CREEK DR

 CONTEXT LOCATION PLAN



1
A02
CONTEXT WEST ELEVATION
1" = 60'-0"



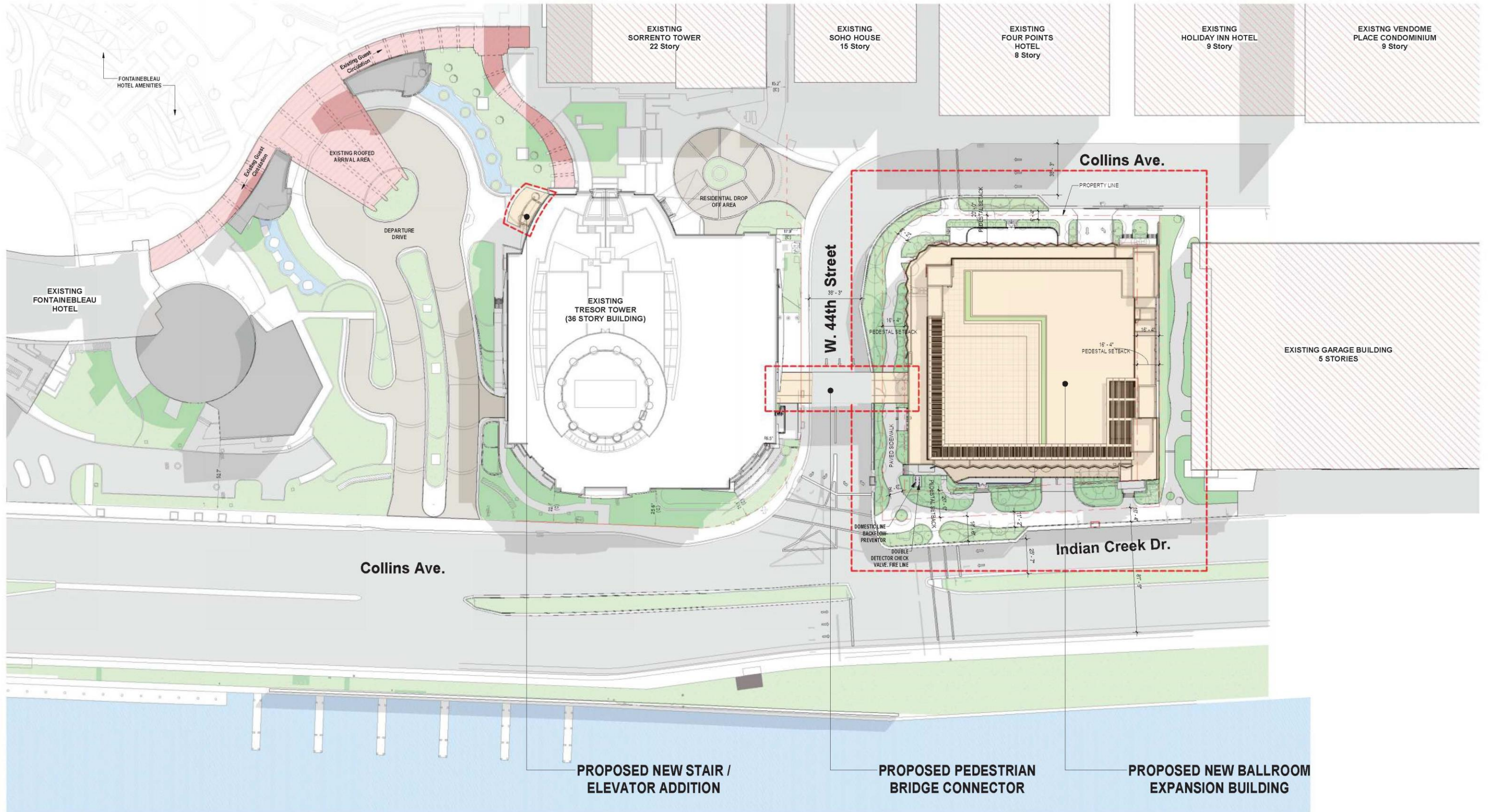


1
A03
CONTEXT WEST ELEVATION
1" = 60'-0"



INTERIOR IMAGE ALONG 44TH STREET

INTERIOR IMAGE ALONG 44TH STREET



1 SITE PLAN_COLORED
 A04 1/32" = 1'-0"



1 ARRIVAL LEVEL- OVERALL - FLOOR PLAN
A05 1" = 20'-0"



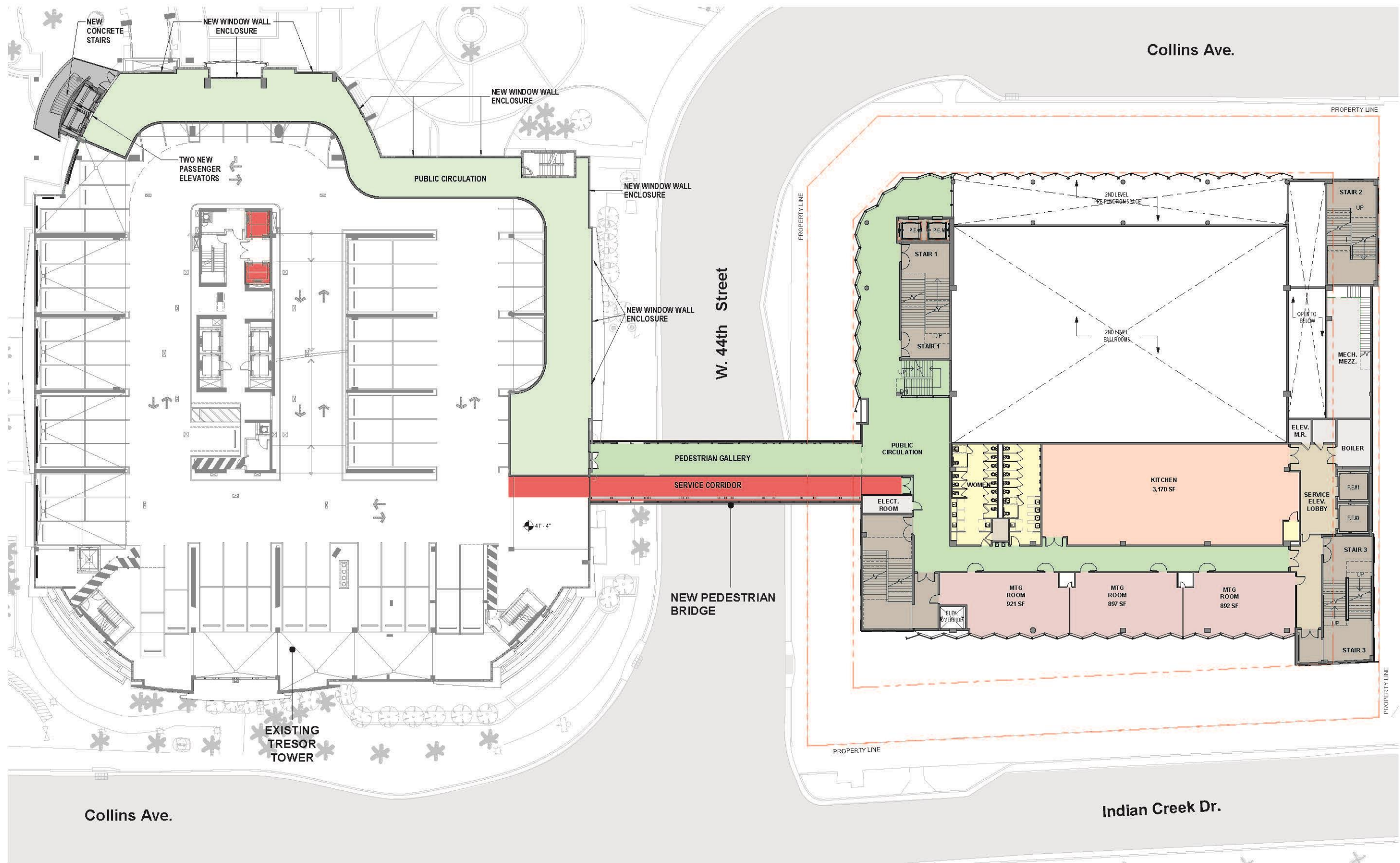
2 EXISTING ARRIVAL IMAGES
A05



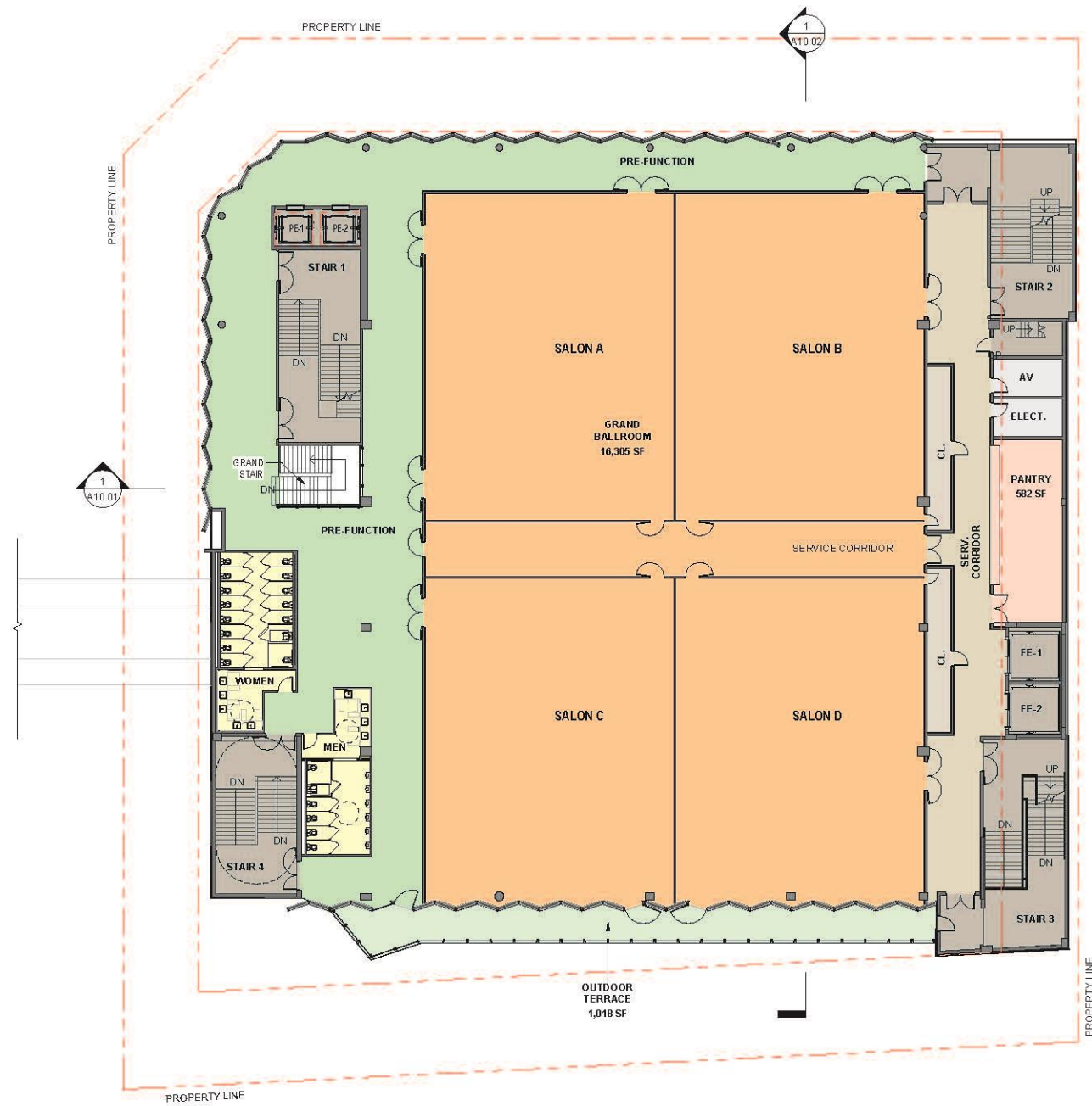
1 EXISTING TRESOR TOWER
A06 6" = 1'-0"



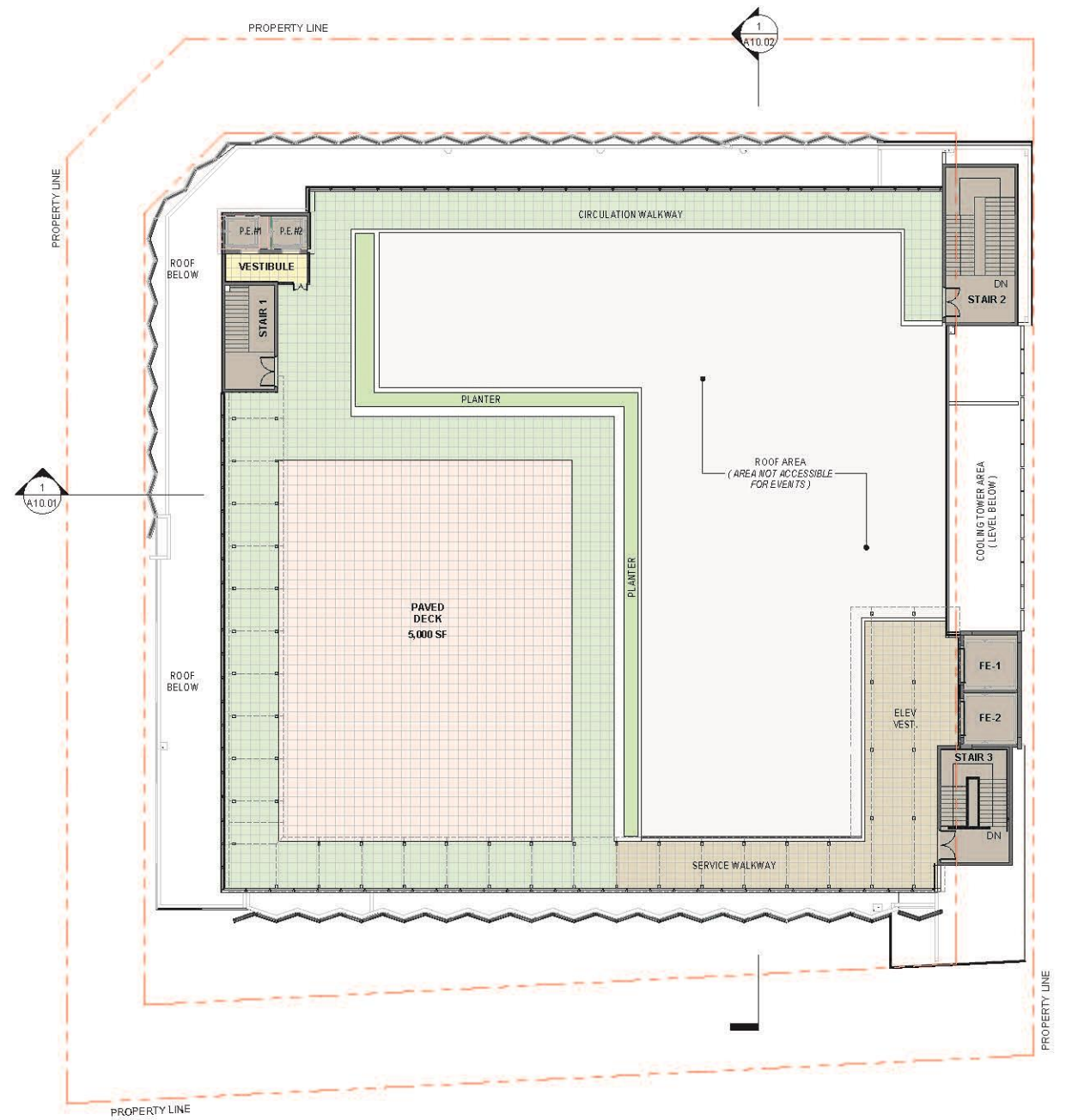
2 STAIR - ELEVATOR ADDITION
A06 6" = 1'-0"



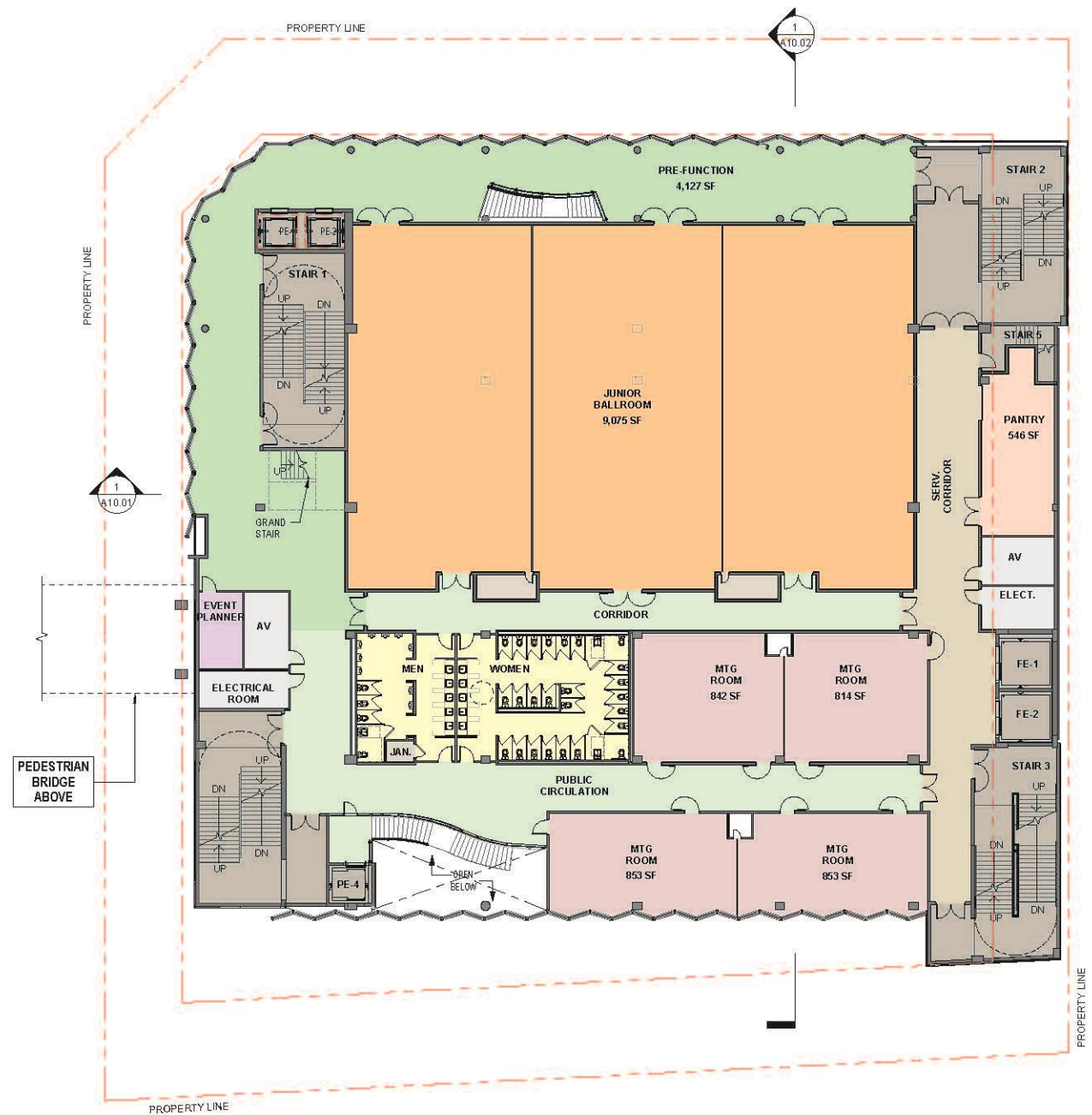
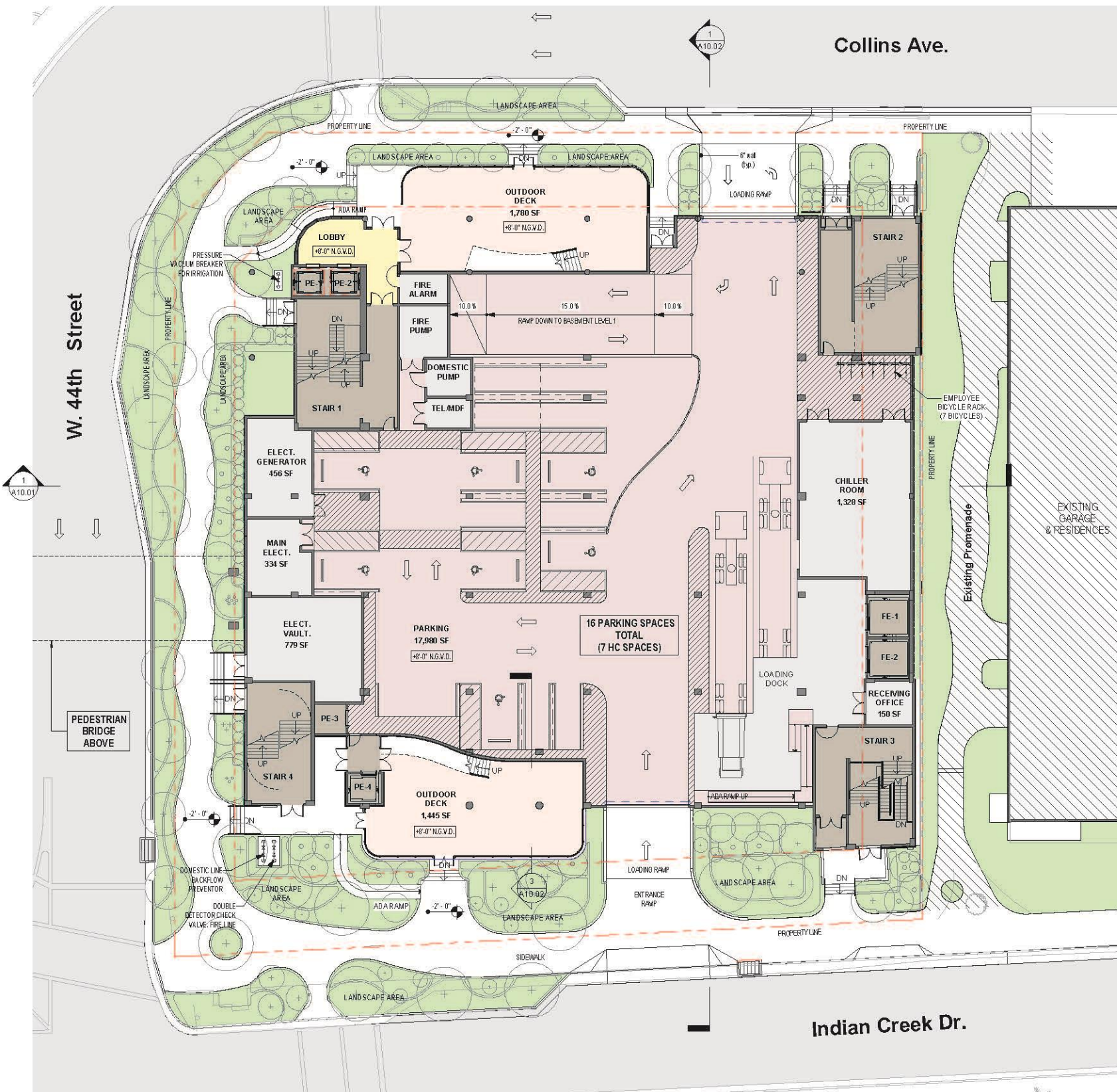
1 3RD LEVEL - OVERALL - FLOOR PLAN
 A07 1/16" = 1'-0"



1
A08
1/16" = 1'-0"

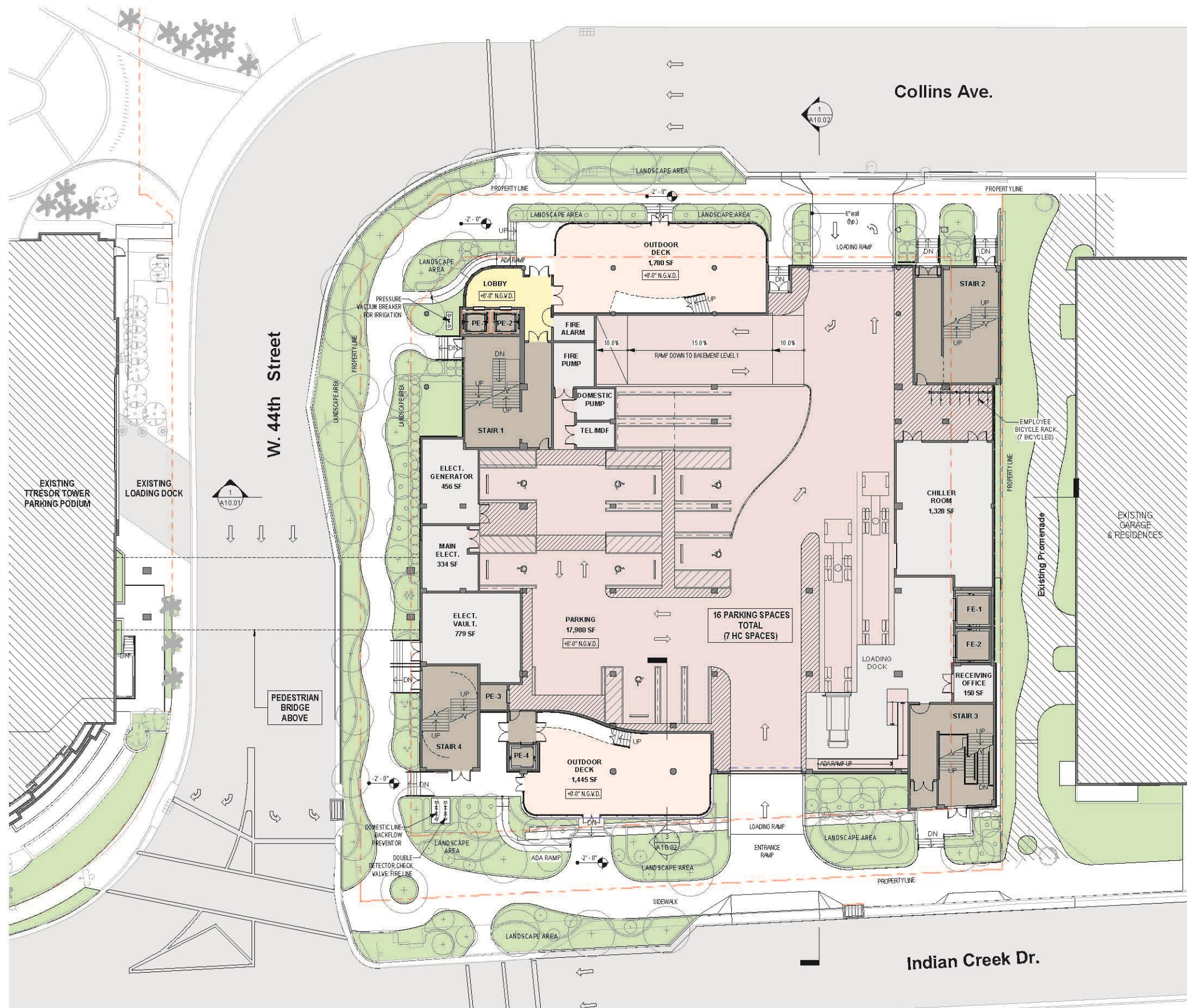


2
A08
1/16" = 1'-0"

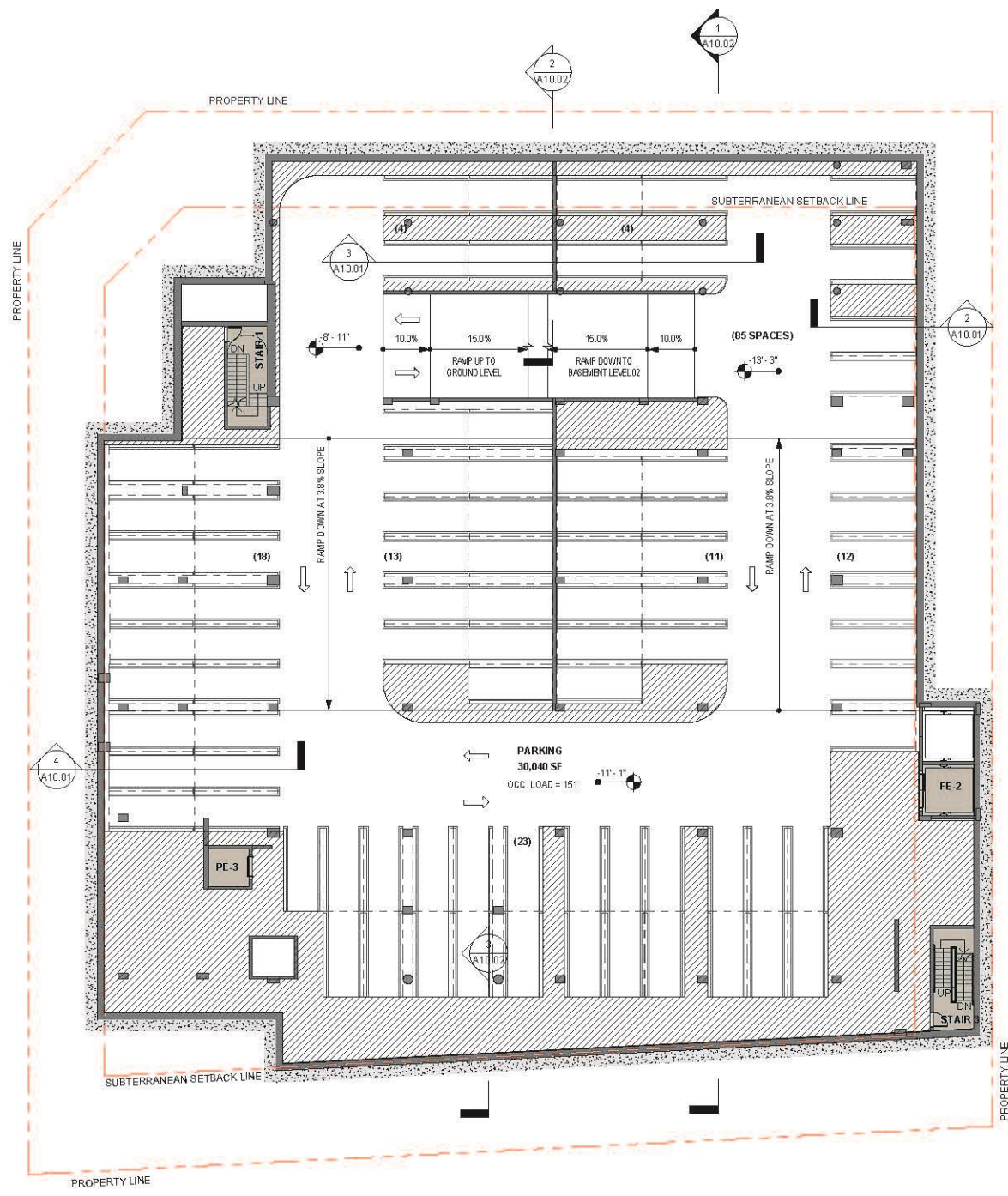


1
A09
GROUND LEVEL - FLOOR PLAN
1/16" = 1'-0"

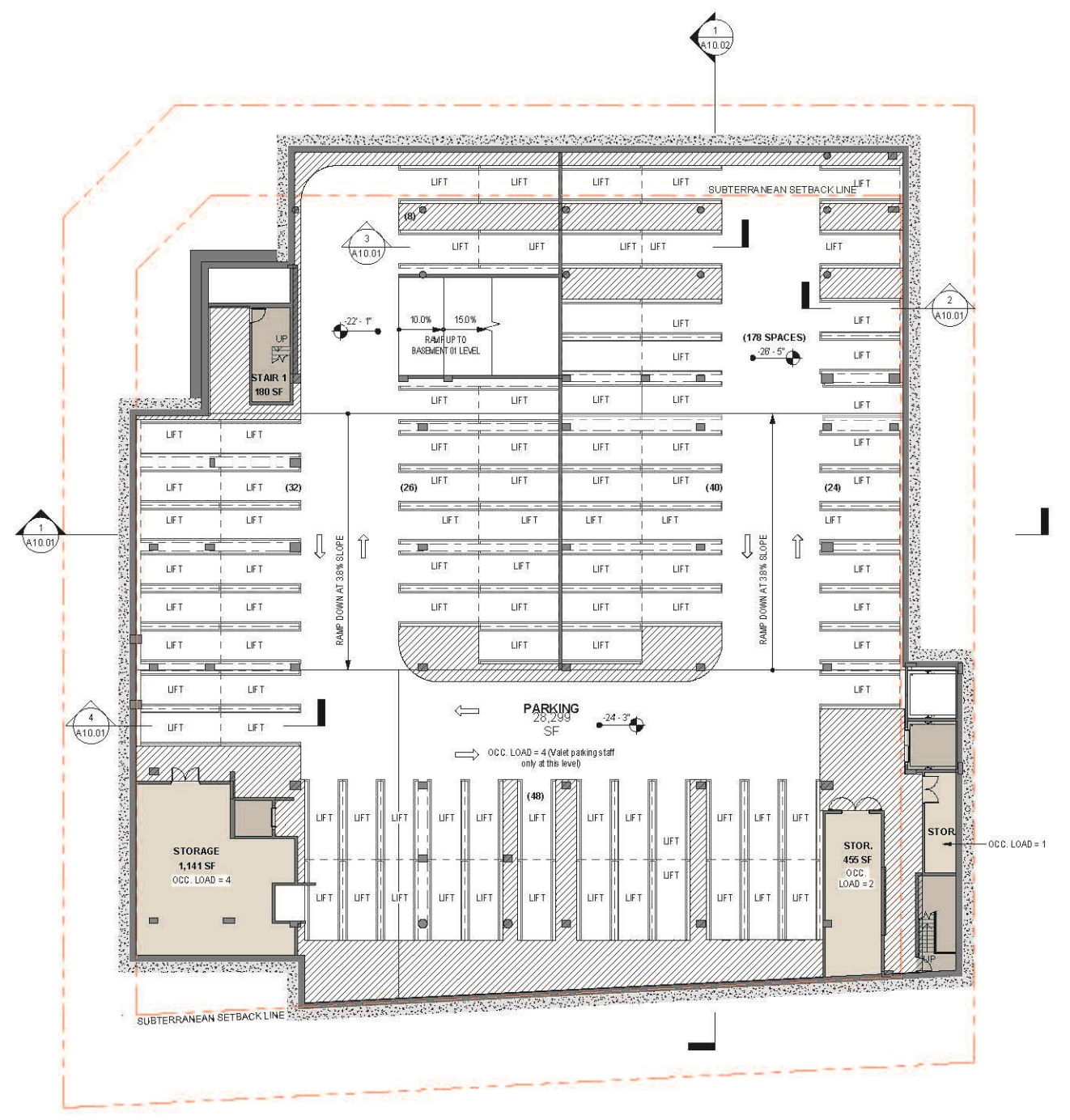
2
A09
2ND LEVEL - FLOOR PLAN
1/16" = 1'-0"



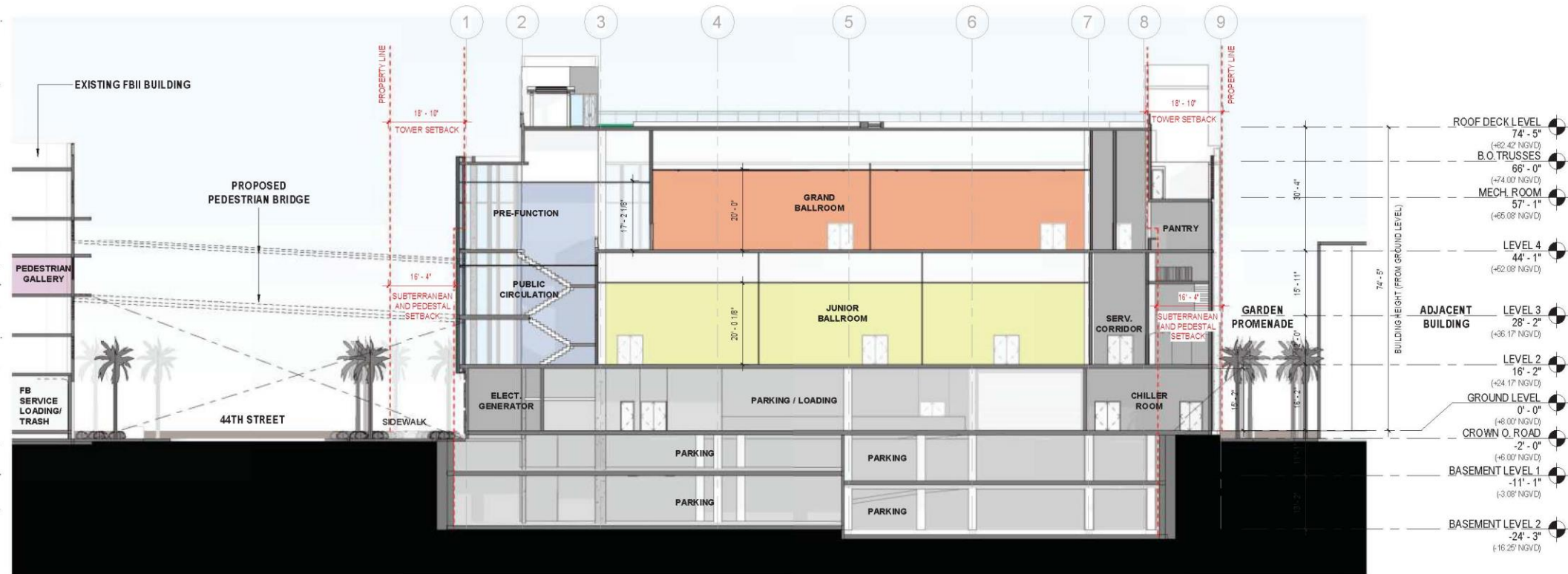
1
A10
GROUND LEVEL - FLOOR PLAN
1/16" = 1'-0"



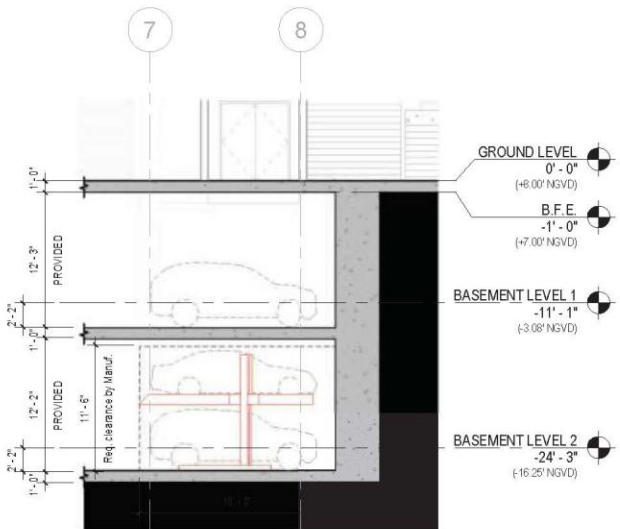
1 BASEMENT LEVEL 1 - FLOOR PLAN
A10.1 1/16" = 1'-0"



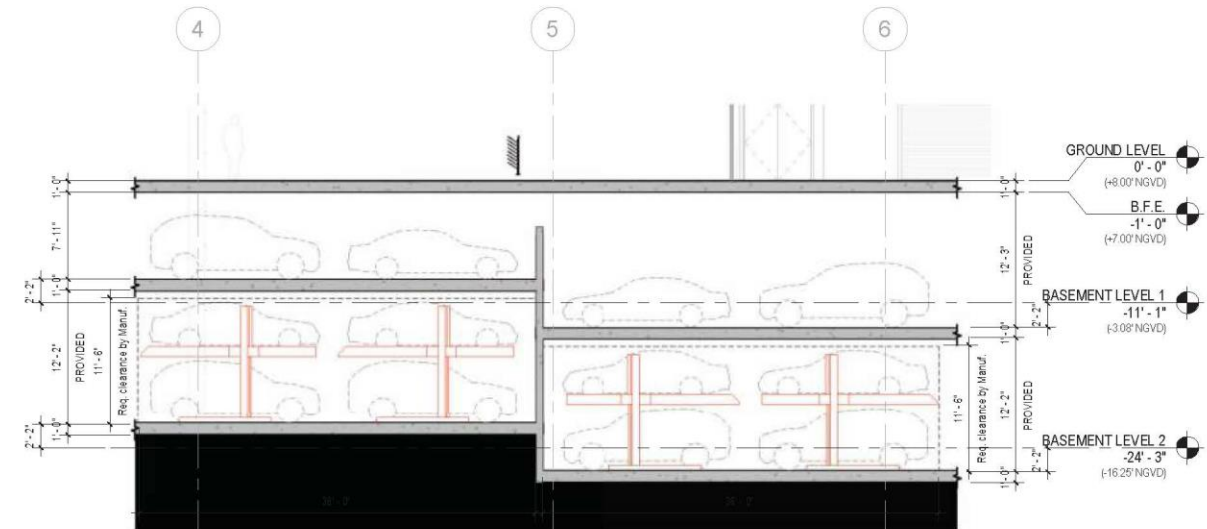
2 BASEMENT LEVEL 2 - FLOOR PLAN
A10.1 1/16" = 1'-0"



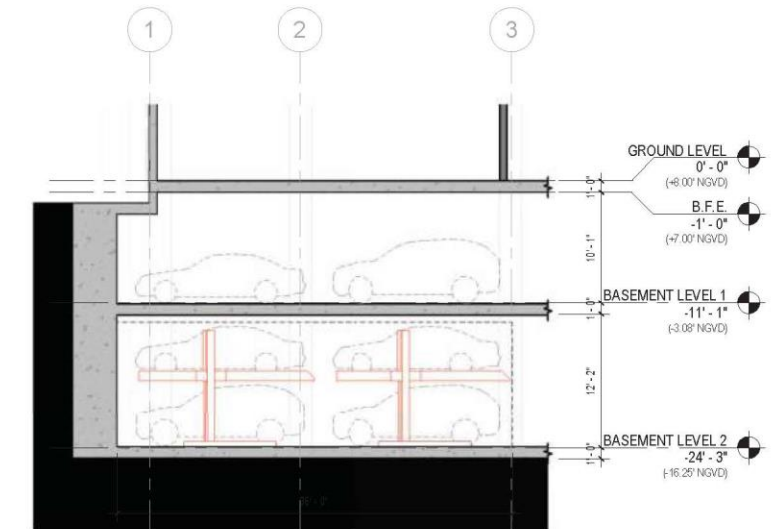
1 BUILDING SECTION 1
A11 1/16" = 1'-0"



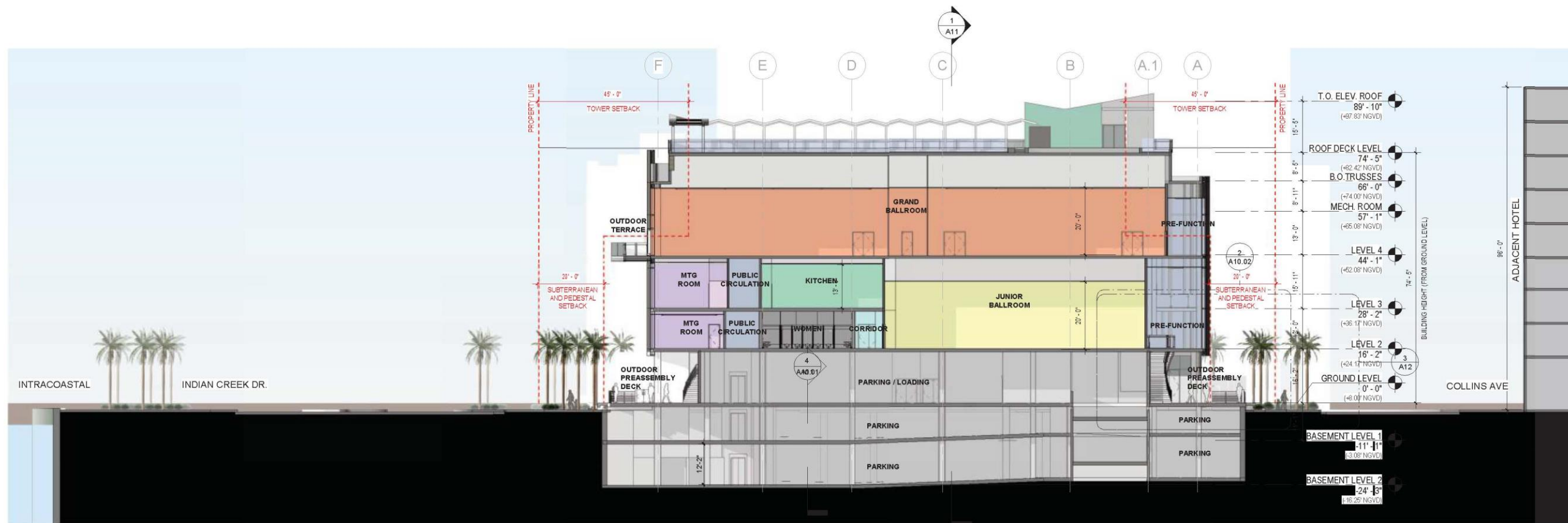
2 DETAIL SECTION 1
A11 1/8" = 1'-0"



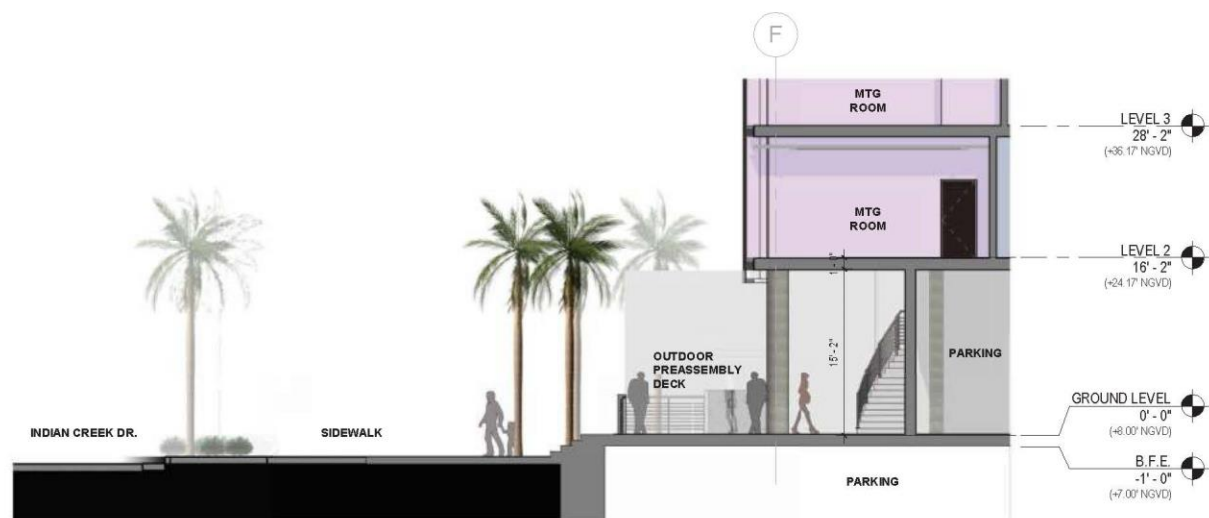
3 DETAIL SECTION 2
A11 1/8" = 1'-0"



4 DETAIL SECTION 3
A11 1/8" = 1'-0"



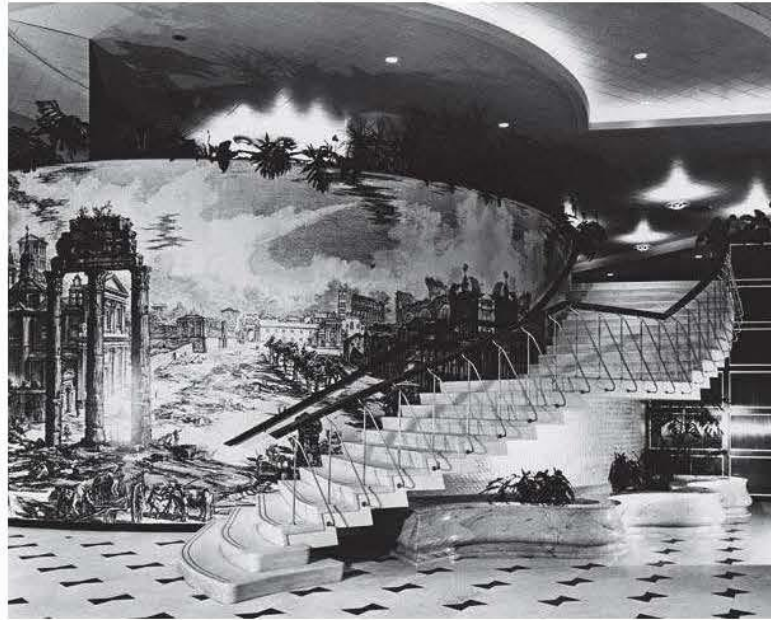
1 BUILDING SECTION 2
A12 1/16" = 1'-0"



2 ENLARGED SECTION 1
A12 1/8" = 1'-0"



3 ENLARGED SECTION 2
A12 1/8" = 1'-0"



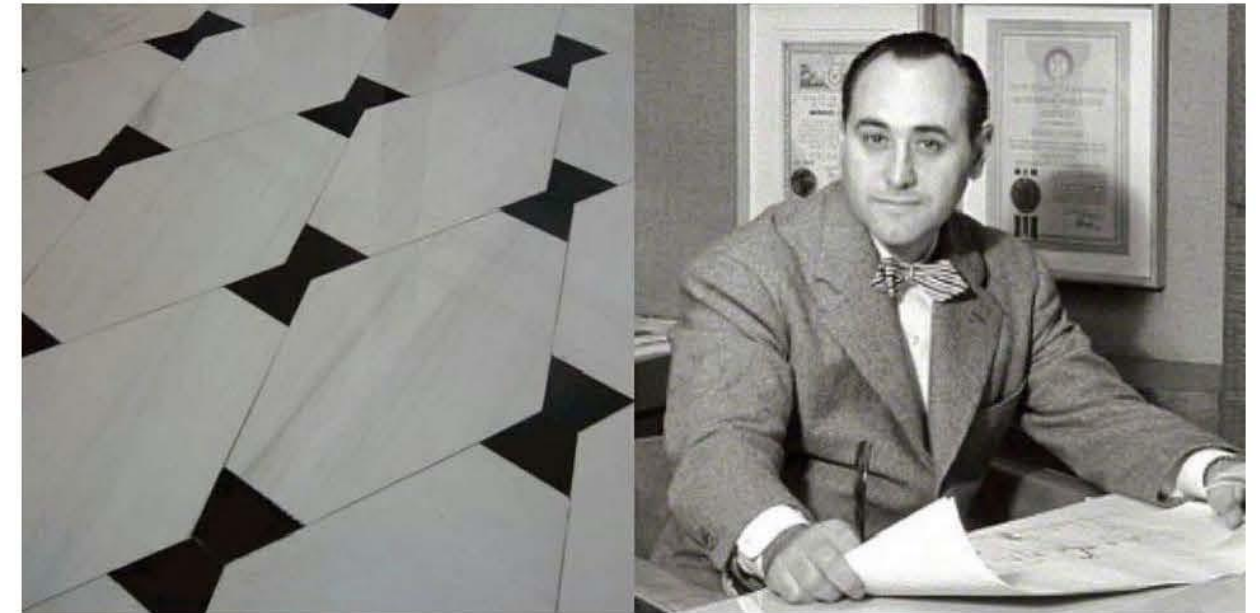
∴ STAIR TO NOWHERE 1950's



∴ STAIR TO NOWHERE TODAY



∴ Morris Lapidus signature BowTie reflected on the wall cladding pattern.









1 SE CORNER RENDER (44TH STREET)
A16



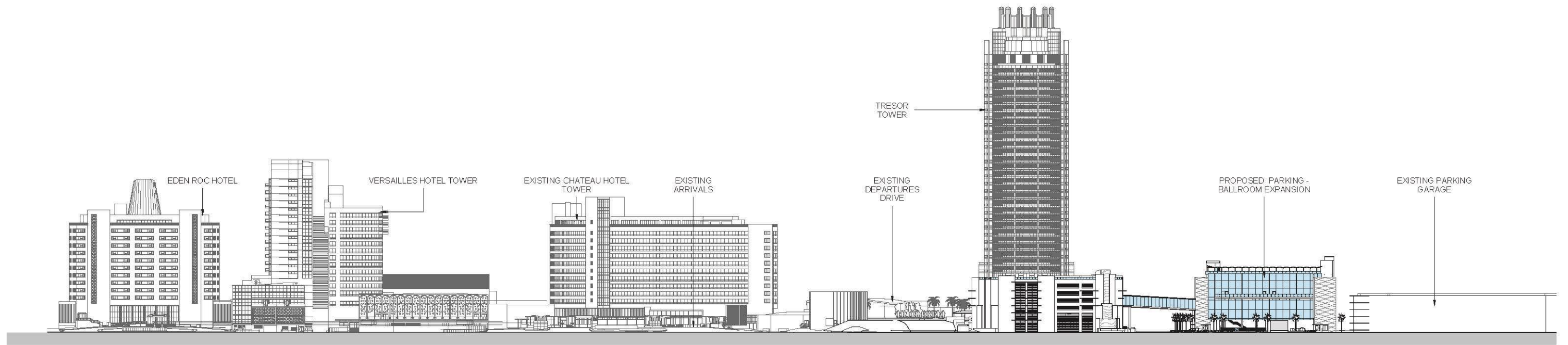
2 44TH STREET RENDERING LOOKING WEST
A16



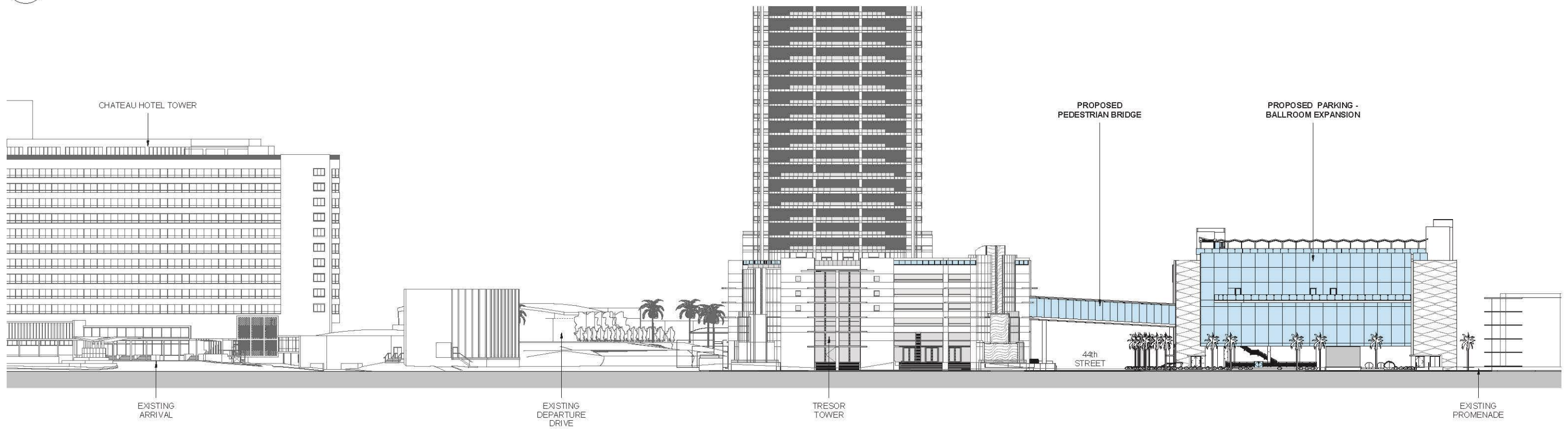
1
A17
NW CORNER RENDER



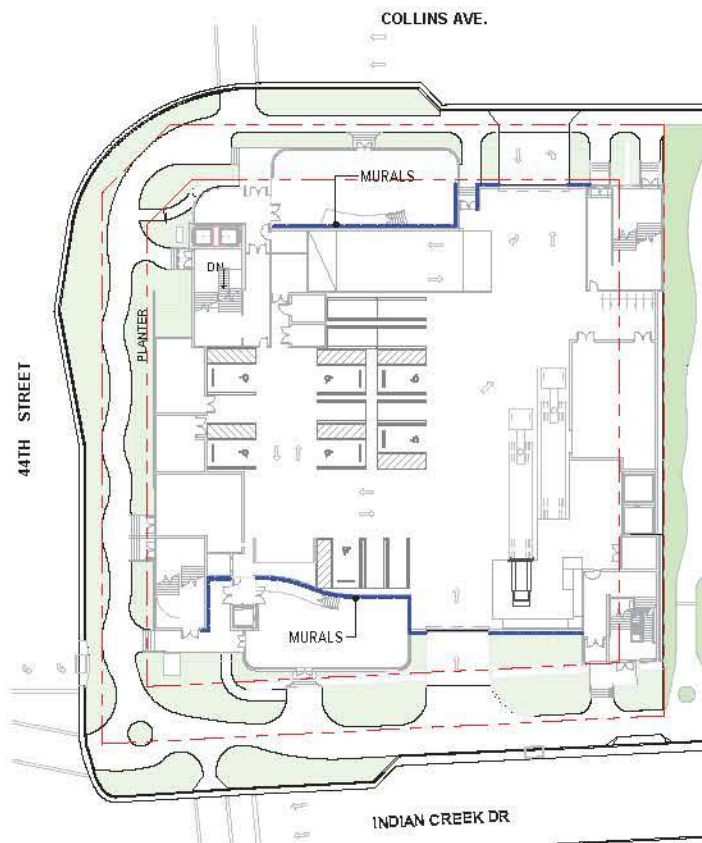
2
A17
SW CORNER RENDER



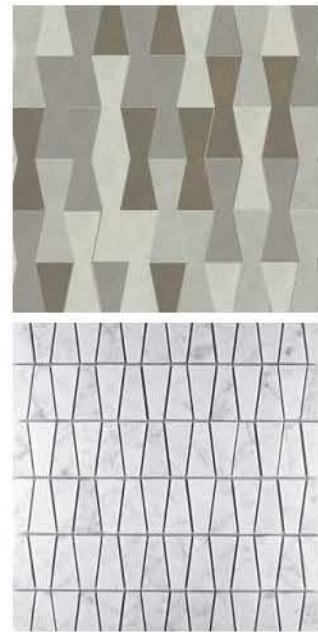
1
A18
CONTEXT WEST ELEVATION
1" = 60'-0"



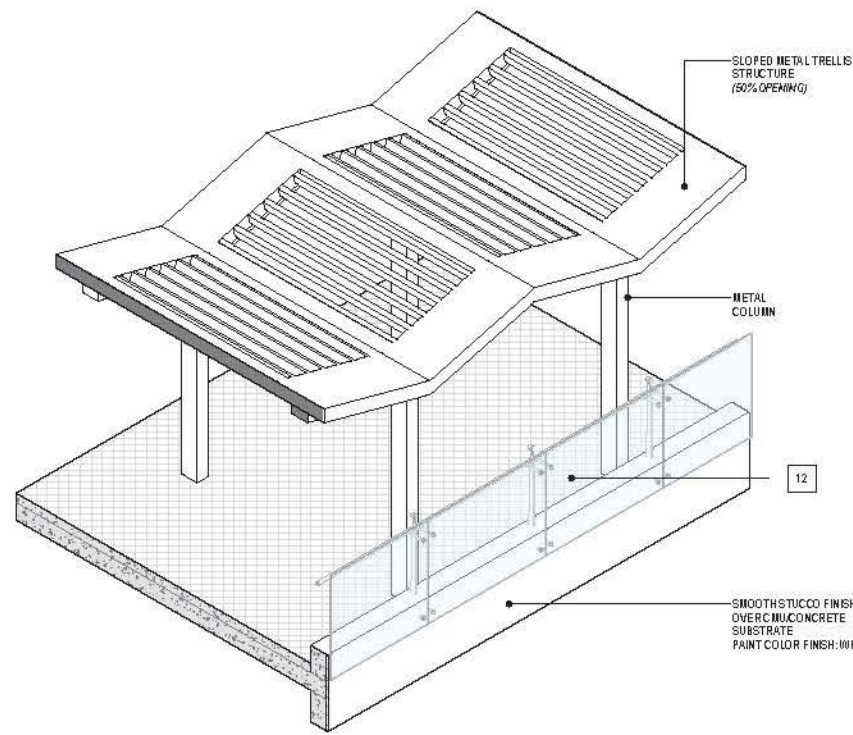
2
A18
CONTEXT WEST ELEVATION
1" = 30'-0"



7 MOSAIC WALL TILE AT GROUND LEVEL
A19 N.T.S.



SAMPLES OF MOSAIC TILE FINISH APPLIED TO GROUND LEVEL WALLS SURFACE. (IMAGES FOR VISUAL REFERENCE ONLY)



1 ENLARGED TRELLIS ROOF DETAIL
A19



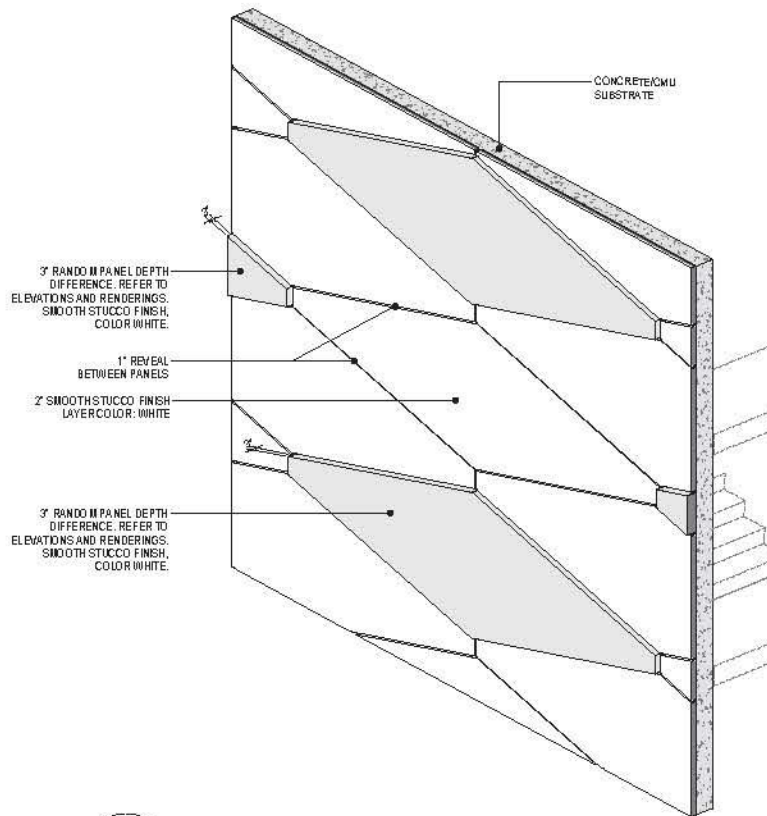
12 9/16" LAMINATED IMPACT GLASS GUARD RAIL SYSTEM (IMAGE FOR VISUAL REFERENCE ONLY)

3 A19 GLASS GUARDRAIL REFERENCE

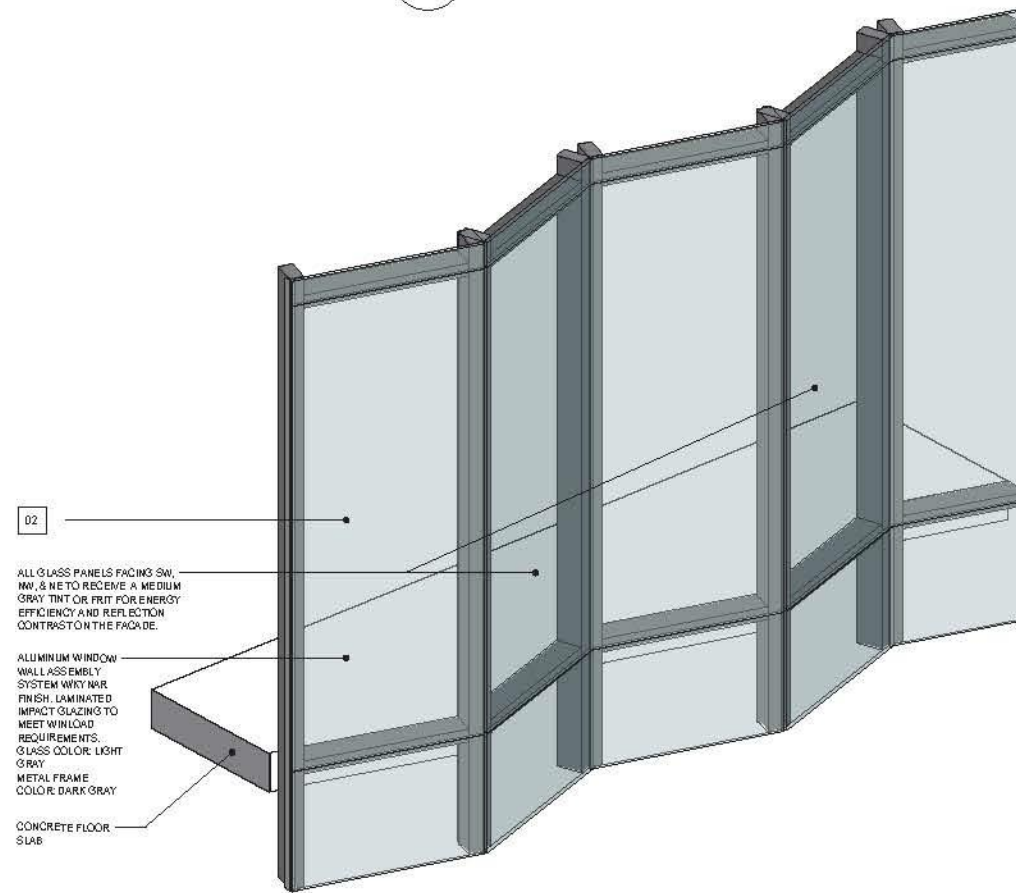


24 METAL GUARDRAIL SYSTEM W/KYNAR FINISH COMPLYING W/IAAMA 2605 (IMAGE FOR VISUAL REFERENCE ONLY)

6 A19 METAL GUARDRAIL REFERENCE



4 EXTERIOR CLADDING DETAIL
A19



5 EXTERIOR WINDOW WALL DETAIL
A19



02 ALUMINUM WINDOW WALL ASSEMBLY W/KYNAR FINISH COMPLYING W/IAAMA 2605, W/ TINT LAMINATED IMPACT GLASS (IMAGES FOR VISUAL REFERENCE ONLY)



RENDERINGS WITH REVISED GLASS COLOR AS
REQUESTED (BLUE TINT)





