

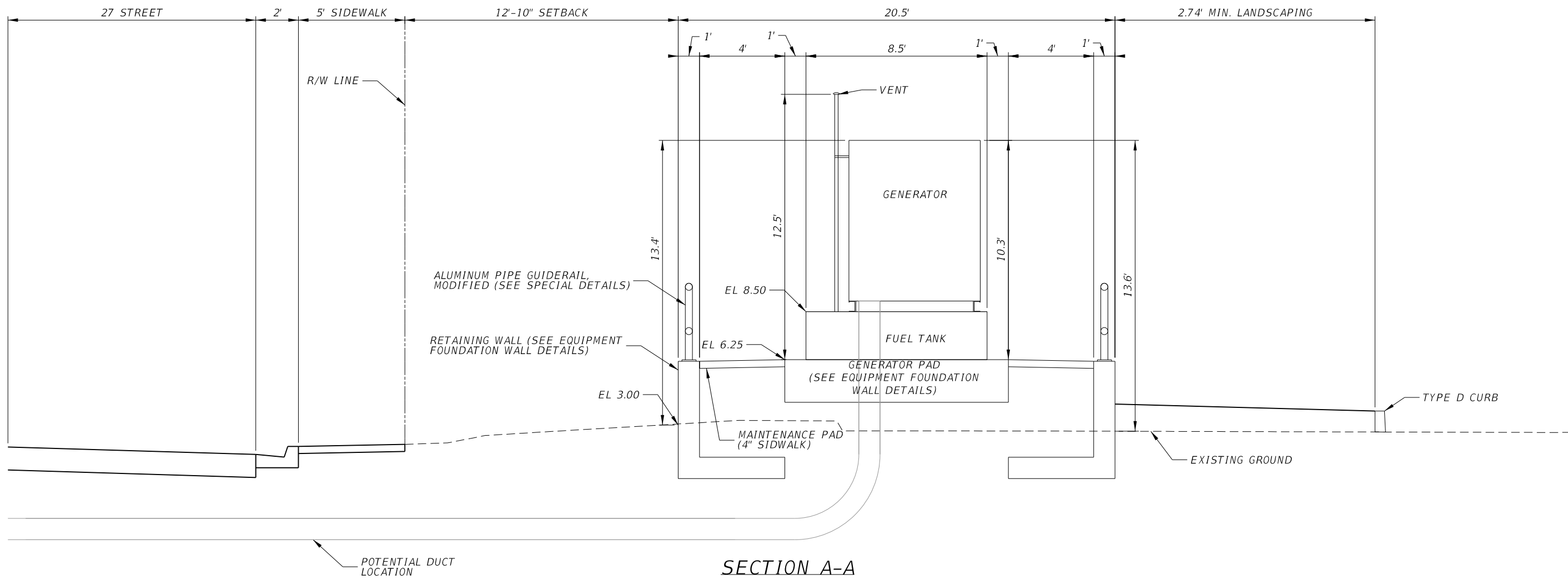
REVISIONS			
DATE	DESCRIPTION	DATE	DESCRIPTION
07/14/20	3 ADDED SHEET		

RIBBECK ENGINEERING, INC.
 14335 SW 120 STREET, SUITE 205
 MIAMI, FLORIDA 33186
 TEL. (305) 383-5909
 FBPE C.A. NO. 27592
CARLOS F. RIBBECK P.E LICENSE NO. 50543

STATE OF FLORIDA DEPARTMENT OF TRANSPORTATION		
ROAD NO.	COUNTY	FINANCIAL PROJECT ID
SR A1A	MIAMI-DADE	439228-2-58-01

SPECIAL DETAILS

SHEET NO.
231E



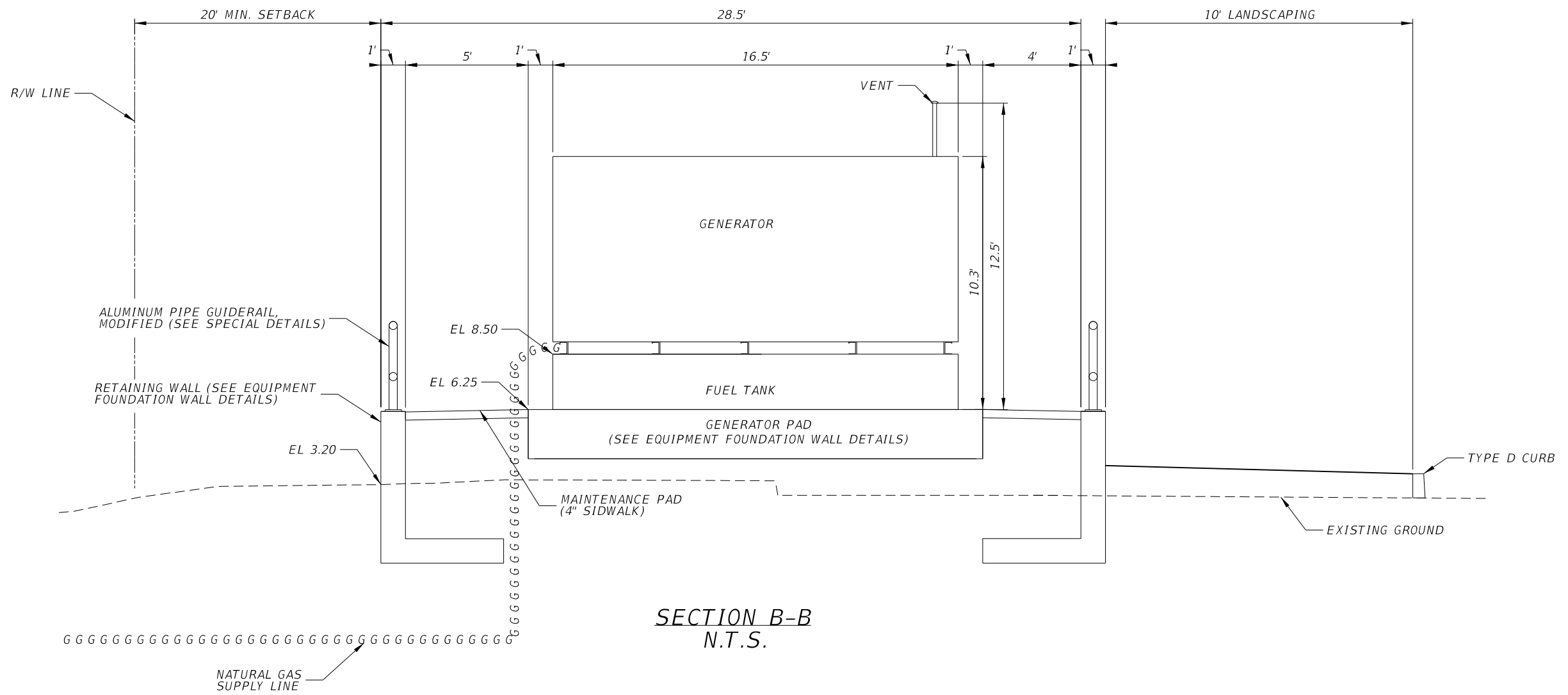
REVISIONS			
DATE	DESCRIPTION	DATE	DESCRIPTION
07/14/20	3 ADDED SHEET		

RIBBECK ENGINEERING, INC.
 14335 SW 120 STREET, SUITE 205
 MIAMI, FLORIDA 33186
 TEL. (305) 383-5909
 FBPE C.A. NO. 27592
CARLOS F. RIBBECK P.E LICENSE NO. 50543

STATE OF FLORIDA DEPARTMENT OF TRANSPORTATION		
ROAD NO.	COUNTY	FINANCIAL PROJECT ID
SR A1A	MIAMI-DADE	439228-2-58-01

SPECIAL DETAILS

SHEET NO.
231F



REVISIONS			
DATE	DESCRIPTION	DATE	DESCRIPTION
07/14/20	3 ADDED SHEET		

RIBBECK ENGINEERING, INC.
 14335 SW 120 STREET, SUITE 205
 MIAMI, FLORIDA 33186
 TEL. (305) 383-5909
 FBPE C.A. NO. 27592
CARLOS F. RIBBECK P.E LICENSE NO. 50543

STATE OF FLORIDA DEPARTMENT OF TRANSPORTATION		
ROAD NO.	COUNTY	FINANCIAL PROJECT ID
SR A1A	MIAMI-DADE	439228-2-58-01

SPECIAL DETAILS

SHEET NO.
231G