

TREES & PLANTING TO BE PRESERVED NOTES

1. EXISTING TREES TO BE PRESERVED SHALL BEAR SAME RELATIONSHIP TO FINISHED GRADE AS THEY BEAR TO PRE-CONSTRUCTION GRADE.
2. EXISTING TREES TO BE PRESERVED SHALL BE PROTECTED WITH STURDY, WEATHERPROOF FENCING AT A MINIMUM FOUR (4) FEET HEIGHT INSTALLED NO CLOSER TO THE TREE TRUNK THAN ITS DRIPLINE. THIS FENCE SHALL BE MAINTAINED IN WORKING ORDER DURING ALL PHASES OF CONSTRUCTION. MAINTAIN TREE PROTECTION ZONES FREE OF WEEDS AND TRASH.
3. NO WORK SHALL BE CONDUCTED WITHIN THE DRIPLINE, UNLESS REVIEWED AND APPROVED BY THE LANDSCAPE ARCHITECT. ALL WORK APPROVED WITHIN THE DRIPLINE SHALL BE COMPLETED BY HAND. PROTECT ROOT SYSTEMS FROM PONDING, ERODING, OR EXCESSIVE WETTING.
4. THE PROJECT LIMIT OF CONSTRUCTION AND ALL EXISTING VEGETATION TO REMAIN IS TO BE CLEARLY DEFINED BY STURDY, WEATHERPROOF FENCING AT A MINIMUM OF FOUR (4) FEET HIGH.

TREES & PLANTING TO BE RELOCATED NOTES

1. THE CONTRACTOR IS TO ROOT PRUNE ALL PLANT MATERIAL 90 DAYS MINIMUM IN ADVANCE OF MOVING PLANT MATERIAL.
2. THE CONTRACTOR IS TO WARRANTY ALL RELOCATED PLANT MATERIAL.
3. THE CONTRACTOR IS RESPONSIBLE FOR THE WATERING AND FERTILIZING OF ALL PLANT RELOCATED PLANT MATERIAL UNTIL PROJECT COMPLETION.
4. ALL RELOCATED PLANT MATERIAL IS TO BE APPROPRIATELY BRACED.
5. CONTRACTOR TO NOTIFY LANDSCAPE ARCHITECT TWO WEEKS IN ADVANCE OF ALL SCHEDULED WORK PERTAINING TO THE RELOCATION OF SITE TREES.

TREES & PLANTING TO BE REMOVED NOTES

1. THE CONTRACTOR IS TO COMPLETELY REMOVE ALL PLANTER MATERIAL DESIGNATED FOR REMOVAL (I.E. ROOT BALL, DEBRIS, SAW DUST, ETC.).
2. THE CONTRACTOR IS TO BACKFILL ALL EXCAVATED ROOT BALLS FLUSH TO THE ADJACENT ELEVATION LEVEL.
3. CONTRACTOR TO NOTIFY LANDSCAPE ARCHITECT TWO WEEKS IN ADVANCE OF ALL SCHEDULED WORK PERTAINING TO THE RELOCATION OF SITE TREES.

MITIGATION NOTES

1. THE PROPOSED PLAN SPECIFIES THE REMOVAL OF xxx SQUARE FEET OF CANOPY AREA. PER SOUTH MIAMI CODE (SEC. 20-4.5.1), THE REMOVAL OF THIS AREA OF CANOPY REQUIRES THE FOLLOWING MITIGATION PLANTING:

1.1. SPECIMEN TREES FAIR/BETTER CONDITION:

1.2. SPECIMEN TREES, AVG. SPECIES, FAIR/BETTER CONDITION:

1.3. SPECIMEN TREES AVG. CONDITION, ALL OTHER REGULATED TREES:
2. REFER TO SHEET L400 FOR MITIGATION TREES' SPECIFICATIONS.
3. REFER TO SHEET L401-04 FOR MITIGATION TREES LOCATIONS

TREE PROTECTION NOTES

1. PROTECTION FENCE SHALL BE GALVANIZED CHAIN LINK STANDARD 2"X2" MESH.
2. PROVIDE HINGED GATE.
3. ALTERNATE: 2X4 WOOD POSTS (6'-0" O.C. MAX) WITH THREE EVENLY SPACED WOODEN RAILS. MIN. HT 4'
4. POSTS MAY BE SHIFTED TO AVOID ROOTS.
5. NO STORAGE, DEBRIS, VEHICULAR TRAFFIC OR EQUIPMENT CLEANING IS ALLOWED WITHIN THE PROTECTED AREA.
6. REFER TO MUNICIPAL REQUIREMENTS FOR ADDITIONAL INFORMATION.

DEFINITIONS

REMOVED TREES TO BE PRESERVED SHALL BEAR SAME RELATIONSHIP TO FINISHED GRADE AS THEY BEAR TO PRE-CONSTRUCTION GRADE.

EXISTING TREES TO BE PRESERVED SHALL BE PROTECTED WITH STURDY, WEATHERPROOF FENCING AT A MINIMUM FOUR (4) FEET HEIGHT INSTALLED NO CLOSER TO THE TREE TRUNK THAN ITS DRIPLINE. THIS FENCE SHALL BE MAINTAINED IN WORKING ORDER DURING ALL PHASES OF CONSTRUCTION. MAINTAIN TREE PROTECTION ZONES FREE OF WEEDS AND TRASH.

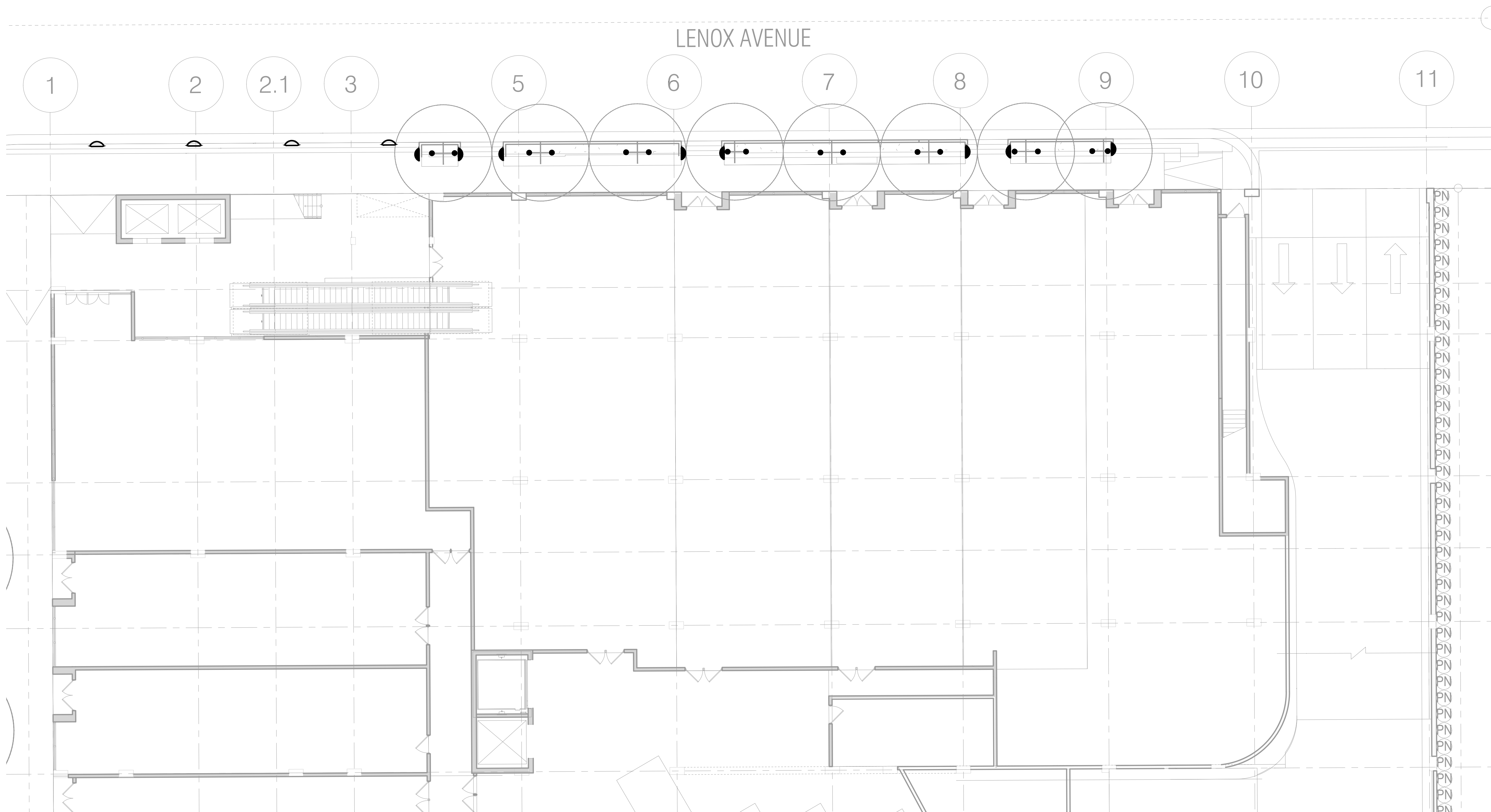
NO WORK SHALL BE CONDUCTED WITHIN THE DRIPLINE, UNLESS REVIEWED AND APPROVED BY THE LANDSCAPE ARCHITECT. ALL WORK APPROVED WITHIN THE DRIPLINE SHALL BE COMPLETED BY HAND. PROTECT ROOT SYSTEMS FROM PONDING, ERODING, OR EXCESSIVE WETTING.

THE PROJECT LIMIT OF CONSTRUCTION AND ALL EXISTING VEGETATION TO REMAIN IS TO BE CLEARLY DEFINED BY STURDY, WEATHERPROOF FENCING AT A MINIMUM OF FOUR (4) FEET HIGH.




TREES DISPOSITION SCHEDULE

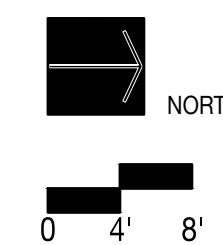
TREE No.	TREE - LATIN NAME	TREE - COMMON NAME	DIAMETER at BREAST HEIGHT (in inches)	DBH MULTI TRUNK	HEIGHT OF CANOPY TREES (in feet)	CLEAR TRUNK HEIGHT OF PALM TREES (in feet)	CANOPY DIAMETER (in feet)	CANOPY (in Sq. Ft.)	DISPOSITION	CONDITION	REMOVAL- MUNICIPAL CRITERIA AND NOTES		
											CRITERIA	CANOPY SQ. FT.	R.OW CANOPY SQ. FT.
1	<i>Schinus terebinthifolius</i>	BRAZILIAN PEPPER TREE	14		25		20	314	REMOVE		INVASIVE	113	
2	<i>Veitchia montgomeryana</i>	MONTGOMERY PALM	4			16	12	113	REMOVE				
3	<i>Sabal palmetto</i>	CABBAGE PALM	12			10	10	79	REMOVE		DOES NOT MEET THE REQUIREMENTS TO QUALIFY AS A TREE. CMB. CHAPTER 46, DIV. 2		
4	<i>Mangifera indica</i>	MANGO TREE	6		20		10	79	REMOVE	POOR		79	
5	<i>Mangifera indica</i>	MANGO TREE	14		25		30	707	REMOVE			707	
6	<i>Ficus benghalensis</i>	BANYAN TREE			3			0	REMOVE	POOR	DOES NOT MEET THE REQUIREMENTS TO QUALIFY AS A TREE. CMB. CHAPTER 46, DIV. 2		
7	<i>Ficus aurea</i>	STANGLER FIG	8		18		17	227	REMOVE	POOR	UNSAFE CONDITIONS	227	
8	<i>Sabal palmetto</i>	CABBAGE PALM	11			7	15	177	REMOVE	FAIR	DOES NOT MEET THE REQUIREMENTS TO QUALIFY AS A TREE. CMB. CHAPTER 46, DIV. 2		
9	<i>Sabal palmetto</i>	CABBAGE PALM	10			22	12	113	REMOVE	FAIR		113	
10	<i>Sabal palmetto</i>	CABBAGE PALM	10			20	12	113	REMOVE			113	
11	<i>Sabal palmetto</i>	CABBAGE PALM	10			18	12	113	REMOVE			113	
12	<i>Washingtonia robusta</i>	WASHINGTON PALM	10			8	12	113	REMOVE		INVASIVE		
13	<i>Wodyetia bifurcata</i>	FOXTAIL PALM	10			14	12	113	REMOVE			113	
14	<i>Wodyetia bifurcata</i>	FOXTAIL PALM	10			12	12	113	REMOVE			113	
15	<i>Roystonea regia</i>	ROYAL PALM	10			20	20	314	REMOVE	FAIR		314	
16	<i>Chamaerops humilis</i>	MEDITERRANEAN FAN PALM	6			8	7	38	REMOVE		DOES NOT MEET THE REQUIREMENTS TO QUALIFY AS A TREE. CMB. CHAPTER 46, DIV. 2	38	
17	<i>Sabal palmetto</i>	CABBAGE PALM	8			18	14	154	REMOVE	FAIR		154	
18	<i>Sabal palmetto</i>	CABBAGE PALM	8			20 , 28	14	28	REMOVE			28	
19	<i>Sabal palmetto</i>	CABBAGE PALM	8			18, 25	14	28	REMOVE			28	
20	<i>Sabal palmetto</i>	CABBAGE PALM	8			20	14	154	REMOVE			154	
21	<i>Veitchia montgomeryana</i>	MONTGOMERY PALM	8			25	16	201	REMOVE			201	
22	<i>Veitchia montgomeryana</i>	MONTGOMERY PALM	8			32	16	201	REMOVE			201	
23	<i>Veitchia montgomeryana</i>	MONTGOMERY PALM	2 @ 8			30, 25	28	616	REMOVE			616	
24	<i>Veitchia merrillii</i>	MANILA PALM	3 @ 4			12	12	113	REMOVE			113	
25	<i>Veitchia merrillii</i>	MANILA PALM	3 @ 4			14	12	113	REMOVE			113	
26	<i>Veitchia merrillii</i>	MANILA PALM	3 @ 5			15	15	6	REMOVE			6	
27	<i>Veitchia merrillii</i>	MANILA PALM	2 @ 4			13	12	113	REMOVE		DOES NOT MEET THE REQUIREMENTS TO QUALIFY AS A TREE. CMB. CHAPTER 46, DIV. 2		
28	<i>Veitchia merrillii</i>	MANILA PALM	3 @ 4			12	16	201	REMOVE				
29	<i>Veitchia merrillii</i>	MANILA PALM	6			8	12	113	REMOVE				
30	<i>Wodyetia bifurcata</i>	FOXTAIL PALM	8			10	10	79	REMOVE	POOR			
31	<i>Roystonea regia</i>	ROYAL PALM	14			22	30	707	REMOVE			707	
32	<i>Bursera simaruba</i>	GUMBO LIMBO	12		22		30	707	REMOVE			707	
33	<i>Bursera simaruba</i>	GUMBO LIMBO	12		22		30	707	REMOVE			707	
STREET TREES													
40	<i>Conocarpus erectus</i>	GREEN BUTTONWOOD	36		35		30	707	REMAIN	FAIR			
41	<i>Conocarpus erectus</i>	GREEN BUTTONWOOD	40		26		30	707	REMOVE	FAIR			707
42	<i>Roystonea regia</i>	ROYAL PALM	14			30	20	314	REMOVE				314
43	<i>Conocarpus erectus</i>	GREEN BUTTONWOOD	36		35		40	1257	REMAIN				
44	<i>Roystonea regia</i>	ROYAL PALM	14			30	20	314	REMOVE				314
45	<i>Roystonea regia</i>	ROYAL PALM	14			24	18	24	REMOVE	FAIR			24
46	<i>Roystonea regia</i>	ROYAL PALM	14			20	15	177	REMOVE	POOR			177
47	<i>Roystonea regia</i>	ROYAL PALM	14			26	25	491	REMOVE				491
48	<i>Roystonea regia</i>	ROYAL PALM	14			26	20	314	REMOVE				314
49	<i>Roystonea regia</i>	ROYAL PALM	14			26	16	201	REMOVE				201
50	<i>Roystonea regia</i>	ROYAL PALM	14			26	16	201	REMOVE				201
51	<i>Roystonea regia</i>	ROYAL PALM	14			30	20	314	REMOVE				314
52	<i>Roystonea regia</i>	ROYAL PALM	18			32	25	491	REMOVE				491
53	<i>Roystonea regia</i>	ROYAL PALM	18			34	25	491	REMOVE				491
54	<i>Roystonea regia</i>	ROYAL PALM	18			30	20	314	REMOVE	FAIR			314
55	<i>Roystonea regia</i>	ROYAL PALM	18			24	20	314	REMOVE				314
56	<i>Roystonea regia</i>	ROYAL PALM	19			24	20	314	REMAIN				
57	<i>Roystonea regia</i>	ROYAL PALM	14			22	20	314	REMOVE				314
58	<i>Lysiloma bahamensis</i>	TAMARIND TREE	8		20		20	314	REMOVE				314
59	<i>Roystonea regia</i>	ROYAL PALM	18			22	18	254	REMOVE				254
60	<i>Lysiloma bahamensis</i>	TAMARIND TREE	7		25		20	314	REMOVE				314
61	<i>Roystonea regia</i>	ROYAL PALM	12			18	14	154	REMOVE				154
TOTAL SQ. FEET FOR SITE REMOVAL:												5,778	
TOTAL SQ. FEET FOR ROW REMOVALS:													6,018





LEGEND:

-  STEP LIGHT
-  WALL LIGHT
-  TREE UP LIGHT



BLVD at Lenox

Miami Beach, Florida

Lighting Plan

3/32" = 1'-0"

08/10/2016

No copies, transmissions, reproductions, or electronic revisions of any portions of these drawings in whole or in part be made without the express written permission of Zyscovich Architects. All designs indicated in these drawings are property of Zyscovich Architects. All copyrights reserved © 2014.



LAND

ZYSCOVICH
ARCHITECTS

100 N Biscayne Blvd . 27th Fl
Miami . FL 33132.2304
t 305.372.5222 f 305.577.4521

e info@zyscovich.com
w www.zyscovich.com

[illegible]

LUMINAIRE SPECIFICATION

Head Office: Tel. 503-645-0500
7144 NW Progress Ct. Fax: 503-645-8100
Hillsboro, Oregon 97124
www.ligmanlightingusa.com

IP65 : Suitable for Wet Locations

IK07 : Impact Resistant (Vandal Resistant)

UVI-40326

Vios 3 square recessed guide light LED

A range of round and square wall recessed luminaires. Suitable for indoor or outdoor applications for use in residential, pedestrian areas, and shopping malls, as a decorative wall guide light.

Luminaires are class II for remote transformer installations .

Low copper content die-cast aluminum housing with high corrosion resistance. Stainless steel screws. Durable silicone rubber gasket and toughened glass diffuser. Single cable entry. Housing is treated with a chemical chromated protection before powder coating, ensuring high corrosion resistance. Integral driver - 120v only, for 277v remote driver should be used. Galvanized concrete recessing box included. This fixture is suitable for concrete pour applications.

Physical Data

Trim: 4.13"

Weight: 1.3 lbs

Lamp

☐ 4.4w - 252lm - White - LED ®

LED Color (Please Specify)

☐ W27 - 2700K

☐ W30 - 3000K

☐ W40 - 4000K

Voltage (Please Specify)

☐ 120V - Integral

☐ 277V - Remote Driver Only

☐ Other

Options (Please Specify)

Color (Please Specify)

☐ 01-Black - RAL 9011

☐ 03-White - RAL 9003

☐ 05-Matt Silver - RAL 9006

☐ 06-Bronze - RAL 6014

☐ 02- Dark Grey - RAL 7043

☐ 04- Metallic Silver - RAL 9006

☐ 07- Custom - RAL


IP65 Remote Box (Optional for 277v)

☐ AB0191 - 3" wide remote box

☐ AB0291 - 4" wide remote box

Remote box IP65 FOR CCG
Dimension: 9.4"x1.0"x0.92"
AB0191

Remote box IP65 FOR CCG
Dimension: 9.4"x1.0"x1.13"
AB0291




LIGMAN
LIGHTING USA

LUMINAIRE SPECIFICATION


Head Office: Tel: 503-645-0100
7144 NW Progress Ct. Fax: 503-645-9100
Hillsboro, Oregon 97124
www.ligmanlightingusa.com

IP65 : Suitable for Wet Locations

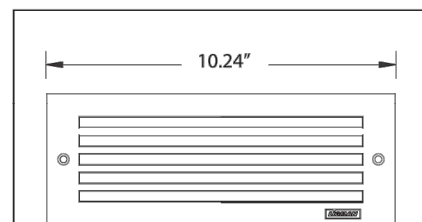
IK07 : Impact Resistant (Vandal Resistant)

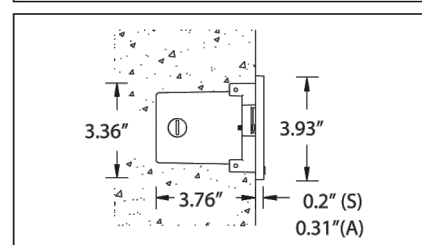


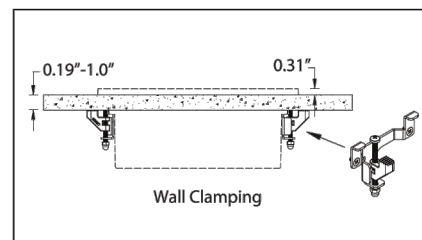
(S) Stainless Steel



(A) Aluminum







ULE-40611

Legend 3 recessed step light LED

A range of vandal resistant rectangular wall recessed luminaires. Suitable for indoor or outdoor applications in residential, shopping and pedestrian areas as decorative guide light. Available in a variety of lamp options that include energy saving compact fluorescent and LED light sources.

Main characteristics are low glare and the limited maintenance concept.

The legend is available with aluminum or stainless steel frames. Low copper content die-cast aluminum housing with a high corrosion resistance. Stainless steel screws. Durable silicone rubber gasket and impact resistant UV stabilized acrylic diffuser. Double cable entry. Housing is treated with a chemical chromatinized protection before powder coating, ensuring high corrosion resistance. Integral control gear. Anodized high purity aluminum reflector.

The SMD (LED's) are available in red, blue, amber, green and white 2700K, 3000K and 4000K. Consult factory for additional colors. This fixture is suitable for concrete pour applications.

Physical Data

Length: 10.24"

Height: 3.93"

Weight: (S) 4.1 lbs (A) 3.5 lbs

Lamp

☐ 10w - White - LED

LED Color (Please Specify)

☐ W27 - 2700K

☐ W30 - 3000K

☐ W40 - 4000K

Voltage (Please Specify)

☐ 120V

☐ 277V

☐ Other _____

Options (Please Specify)

☐ S - Stainless Steel

☐ A - Aluminum

Color (Please Specify for Aluminum Style Only)

☐ 01-Black - RAL 9011

☐ 02-White - RAL 9003


☐ 03-Matt Silver - RAL 9006

☐ 06-Bronze - RAL 6014

☐ 02- Dark Grey - RAL 7043

☐ 04 - Metallic Silver - RAL 9006

☐ 07- Custom - RAL _____





☐ F - Frosted Lens

☐ C - Clear Lens

☐ Wall Clamping

☐ Surface Mounting Box Enclosure





METEOR

SH-200

Solar LED Ground Light



METEOR Solar LED Paver lights incorporate state-of-the-art technology, combining the best solar panels, power storage and optical design to create products that will function for years to come.

Quantity
Project
Note
Type

General
 Weight: 0.55 lbs
 Rim Finish: Brushed/Polished stainless steel; Optional: SUS316 stainless steel / Brass
 Lens: GE super light permeable PC
 Housing: SUS304 stainless steel, cast aluminum
 Power Storage: Ultracapactor

Operational
 Operation Time: Minimum 12 hours (fully charged) 4-8 hours (overcast)
 Full Charge Time: 6 hours (direct sunlight)
 Switch: Light sensitive auto on/off

Environmental
 Compressive Strength: 2541 lbs/1153 kgs (minimum)
 Operating Temperature: -4°F-140°F F
 Storage Temperature: -13°F-170°F F

Warranty
 3 year limited warranty. See www.meteor-lighting.com for details.

IP68



How To Specify

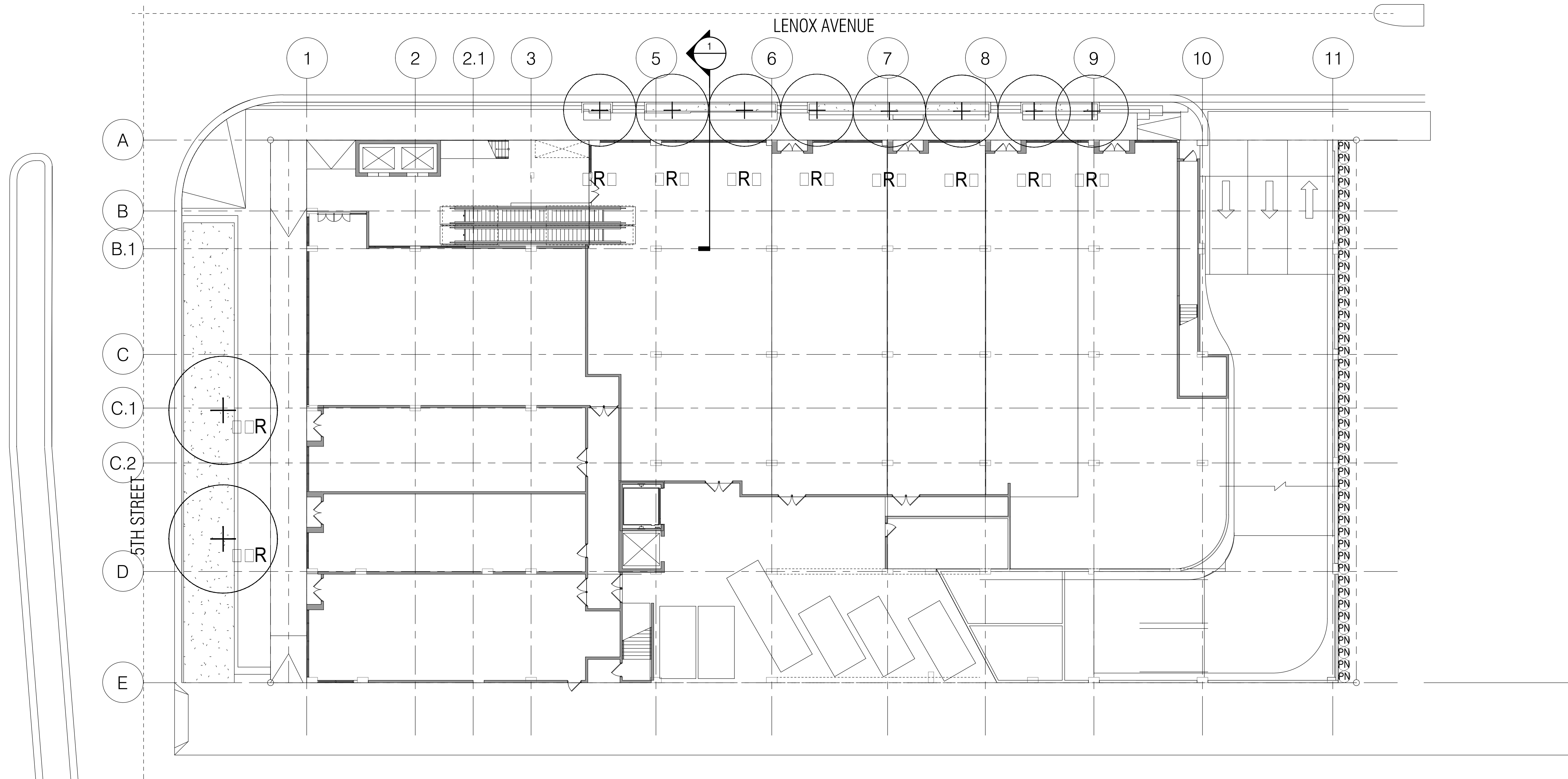
Ordering Example: SH200C-AMB-PS-HS

Model	LED Color	Rim Finish	Housing
SH200C Product SH200B Battery sample	AMB Amber BLU Blue GRN Green RED Red WHT White WAM Warm white	BS Brushed Stainless Steel PS Polished Stainless Steel SS SUS316 Stainless Steel BR Brass	HS Housing and Anchor Plate Included NH Without Housing and Anchor Plate

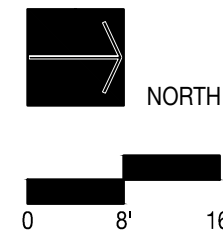
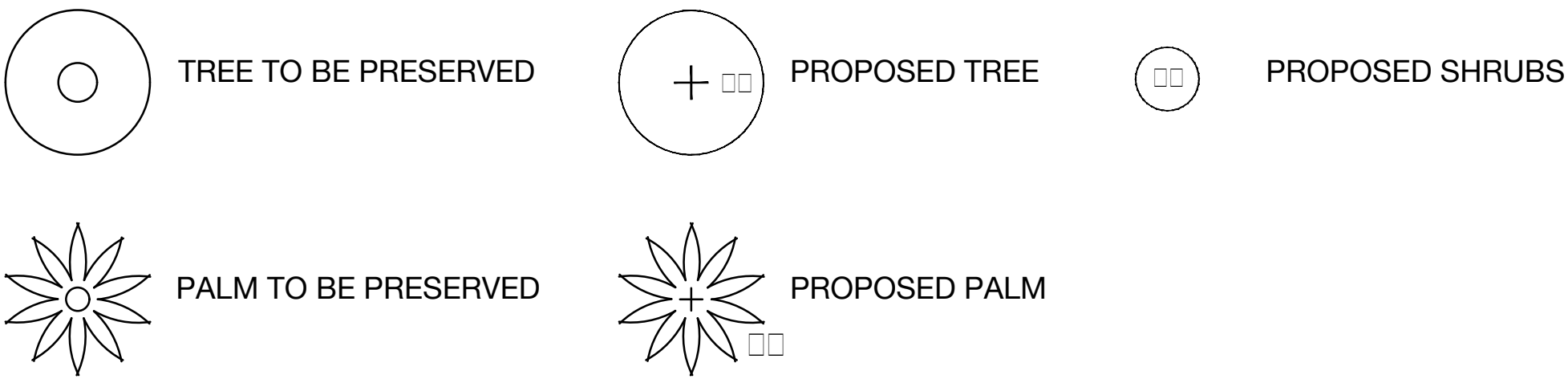
*Color LUX(Average)

White	25
Amber	25
Red	30
Blue	20
Green	15
Warm White	25

e info@zyscovich.com
w www.zyscovich.com



TREE DISPOSITION LEGEND



BLVD at Lenox

Miami Beach, Florida

Planting Plan

1/16" = 1'-0"

08/10/2016

No copies, transmissions, reproductions, or electronic revisions of any portions of these drawings in whole or in part be made without the express written permission of Zyscovich Architects. All designs indicated in these drawings are property of Zyscovich Architects. All copyrights reserved © 2014.



LAND

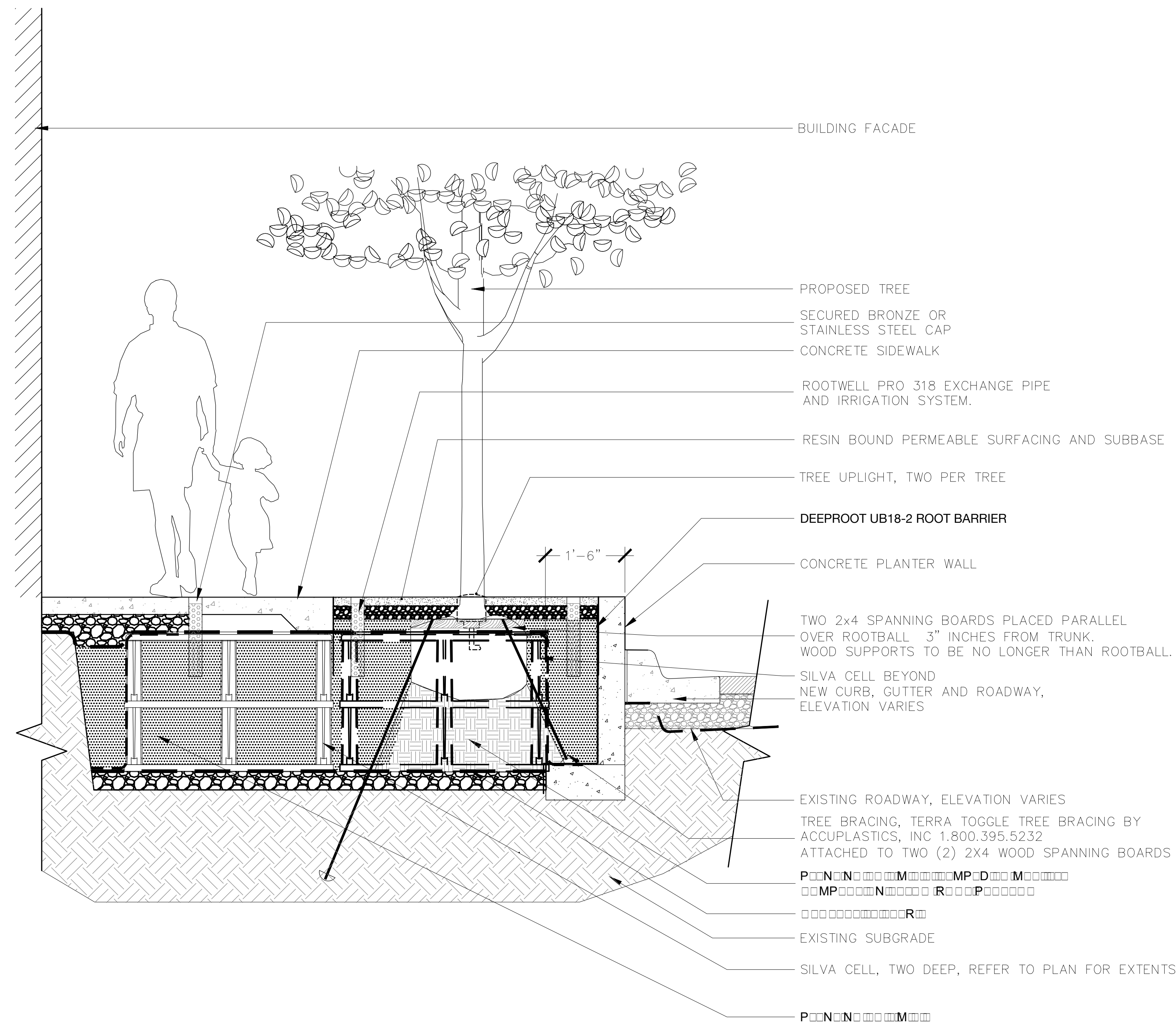
ZYSCOVICH
ARCHITECTS

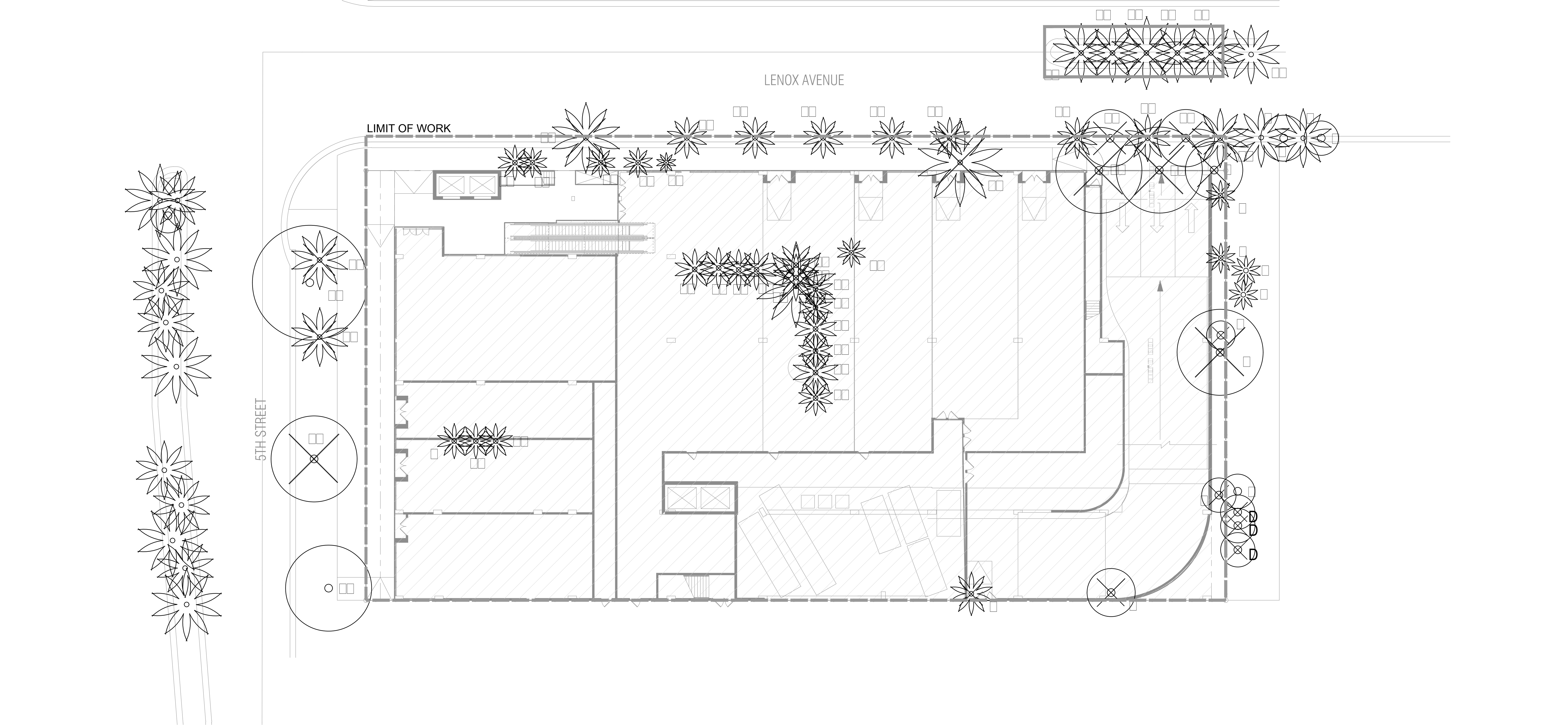
100 N Biscayne Blvd. 27th Fl
Miami, FL 33132.2304
t 305.372.5222 f 305.577.4521

e info@zyscovich.com
w www.zyscovich.com

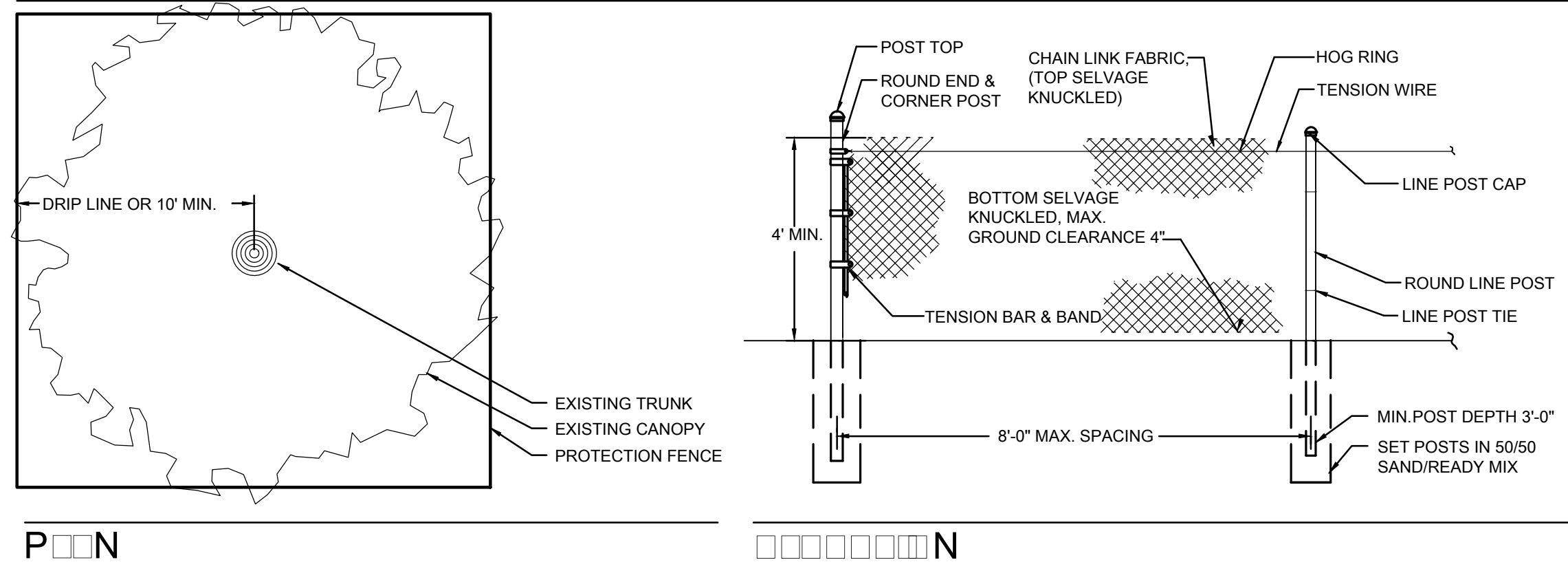
1. PLANT MATERIAL IS TO BE HEALTHY SPECIMENS FREE FROM DISEASE OR DAMAGE, AND IS TO BE MAINTAINED IN EXCELLENT CONDITION WHILE ON THE JOBSITE. LANDSCAPE ARCHITECT SHALL INSPECT PLANT MATERIAL UPON ARRIVAL TO JOBSITE AND WILL REJECT PLANT MATERIAL THAT DOES NOT MEET THE STANDARDS DESCRIBED WITHIN THE CONTRACT DOCUMENTS.
2. THE LANDSCAPE ARCHITECT WILL PERIODICALLY INSPECT PLANT MATERIAL STOCKPILED AND/OR PLANTED ON SITE DURING THE COURSE OF CONSTRUCTION. PLANT MATERIAL NOT MEETING THE STANDARDS CONTAINED WITHIN CONTRACT DOCUMENTS SHALL BE REPLACED AT NO COST TO THE OWNER.
3. PROVIDE MATCHING SIZES AND FORMS FOR EACH PLANT OF THE SAME SPECIES UNLESS OTHERWISE INDICATED.
4. CONTRACTOR TO VERIFY ALL QUANTITIES. IN CASE OF DISCREPANCIES, GRAPHICALLY SHOWN QUANTITIES SHALL TAKE PRECEDENCE.
5. ALL MATERIALS USED SHALL CONFORM TO THE GUIDELINES ESTABLISHED BY THE CURRENT AMERICAN STANDARDS FOR NURSERY STOCK, PUBLISHED BY THE AMERICAN ASSOCIATION OF NURSERYMEN.
6. ALL PLANT MATERIAL SHALL BE INSTALLED PLUMB AND PER THE SPECIFICATIONS CONTAINED WITHIN THE CONTRACT DOCUMENTS. ANY NECESSARY STAKING AND/OR OTHER SUPPORTS MATERIALS/METHODS SHALL BE SUBMITTED TO THE LANDSCAPE ARCHITECT FOR REVIEW AND APPROVAL PRIOR TO INSTALLATION.
7. THE CONTRACTOR SHALL PRUNE EXISTING AND/OR NEW TREES ONLY PER LANDSCAPE ARCHITECT DIRECTION.
8. THE CONTRACTOR SHALL STAKE THE LOCATIONS OF ALL TREES AND B&B SHRUBS FOR LANDSCAPE ARCHITECT REVIEW AND APPROVAL, PRIOR TO INSTALLATION.
9. ALL ROOT-WRAPPING MATERIALS THAT ARE NOT BIO-DEGRADABLE SHALL BE REMOVED FROM THE ROOT BALL. ROOT BALLS SHALL BE FREE OF WEEDS.
10. SPECIFIED PLANT MATERIAL SIZES SHALL BE CONSIDERED MINIMUM SIZES.
11. FINISH GRADE OF PLANTING BEDS SHALL BE ONE (1) INCH BELOW ADJACENT FLATWORK, UNLESS SPECIFIED OTHERWISE.
12. MULCH OR PLANTING BED DRESSING SHALL BE PLACED IN ALL PLANTING AREAS AS SPECIFIED. MULCH OR PLANTING BED DRESSING SHALL NOT BE PLACED WITHIN SIX (6) INCHES OF TREE TRUNKS. MULCHING SHOULD BE REPEATED ANNUALLY DURING THE AUTUMN TO A THREE (3) INCH DEPTH.
13. ALL PLANT MATERIAL SHOULD RECEIVE AN ORGANIC FERTILIZER IN LIMITED APPLICATION FOLLOWING INSTALLATION. TYPE AND APPLICATION RATE AND METHOD OF APPLICATION TO BE SPECIFIED BY THE CONTRACTOR AND APPROVED BY THE LANDSCAPE ARCHITECT.
14. EXCESS FERTILIZER SHALL BE DISPOSED OF PROPERLY OFF-SITE. IT SHALL NOT BE DISPOSED OF IN STORM DRAINS AND/OR DRYWELLS.
15. STOCKPILED PLANT MATERIAL TO BE PLACED IN THE SHADE AND PROPERLY HAND-WATERED UNTIL PLANTED.
16. MINI-NUGGET TYPE DECORATIVE BARK MULCH WILL BE USED TO RETURN NUTRIENTS TO THE SOIL, REDUCE MAINTENANCE AND MINIMIZE EVAPORATION FOR AREAS APPROXIMATE TO THE RESIDENCE. LARGER SHREDDED BARK MULCH WILL BE USED FOR STEEP AREAS SO SLOUGHING IS LESS LIKELY TO OCCUR.
17. PRESERVE & PROTECT ALL EXISTING VEGETATION INDICATED TO REMAIN AT ALL TIMES.
18. ALL VEGETATION PROPOSED FOR OUTSIDE THE BUILDING ENVELOPE TO BE NATIVE UNLESS OTHERWISE NOTED. PLANTING THAT OCCURS OUTSIDE THE BUILDING ENVELOPE IS FOR RESTORATION PURPOSES ONLY OR IS SPECIFIC TO UTILITIES RESTORATION.
19. SIX (6) INCH PLANT MIX SHALL BE PROVIDED FOR ALL LAWN, TURF, AND NATIVE PLANTING ZONES. 18 INCH PLANT MIX SHALL BE PROVIDED FOR ALL PERENNIAL PLANTING BEDS UNLESS OTHERWISE NOTED.

ABR.	QTY.	BOTANICAL NAME	COMMON NAME	SPECIFICATION
TREES				
CRO	8	<i>Clusia rosea</i>	PITCH APPLE	20'
CER	2	<i>Cocanut erectus</i>	BUTTONWOOD	16' OA. COLLECTED
SHRUBS				
PN	46	<i>Psychotria nervosa</i>	WILD COFFEE	7 GAL.





TREE PROTECTION DETAIL



TREE DISPOSITION LEGEND

