[illegible]

1611

ALL INFORMATION AND SPOTTED MATERIAL APPEARING HEREIN
GIVES EFFECT TO THE ORDINANCE AND UNPUBLISHED WORK OF JOHN
HARRIS, AKA, MAY NOT BE REPRODUCED, COPIED, OR CIRCULATED
THIS IS NOT TO BE A SIGNATURE BUT AN INDICATION OF JOHN HARRIS
AUTHENTICITY. A SIGNATURE OF JOHN HARRIS, 843, AKA, IS

COMPOSITE SITE PLAN



915 Washington Avenue
Miami Beach, FL 33139

PETER N. ANSELMO
R.L.A. FL# 06877221

LANDSCAPE ARCHITECT
NATURALFICIAL
6815 RED ROAD SUITE 224
CORAL GABLES, FL 33143
FIRM# LC26000648
O: 305.321.2341

LIGHTSTONE
460 Park Avenue
New York, NY 10022
C: 212.616.9969

**ARCHITECTURE
INTERIOR DESIGN
PLANNING**

AIA ASID NCARB

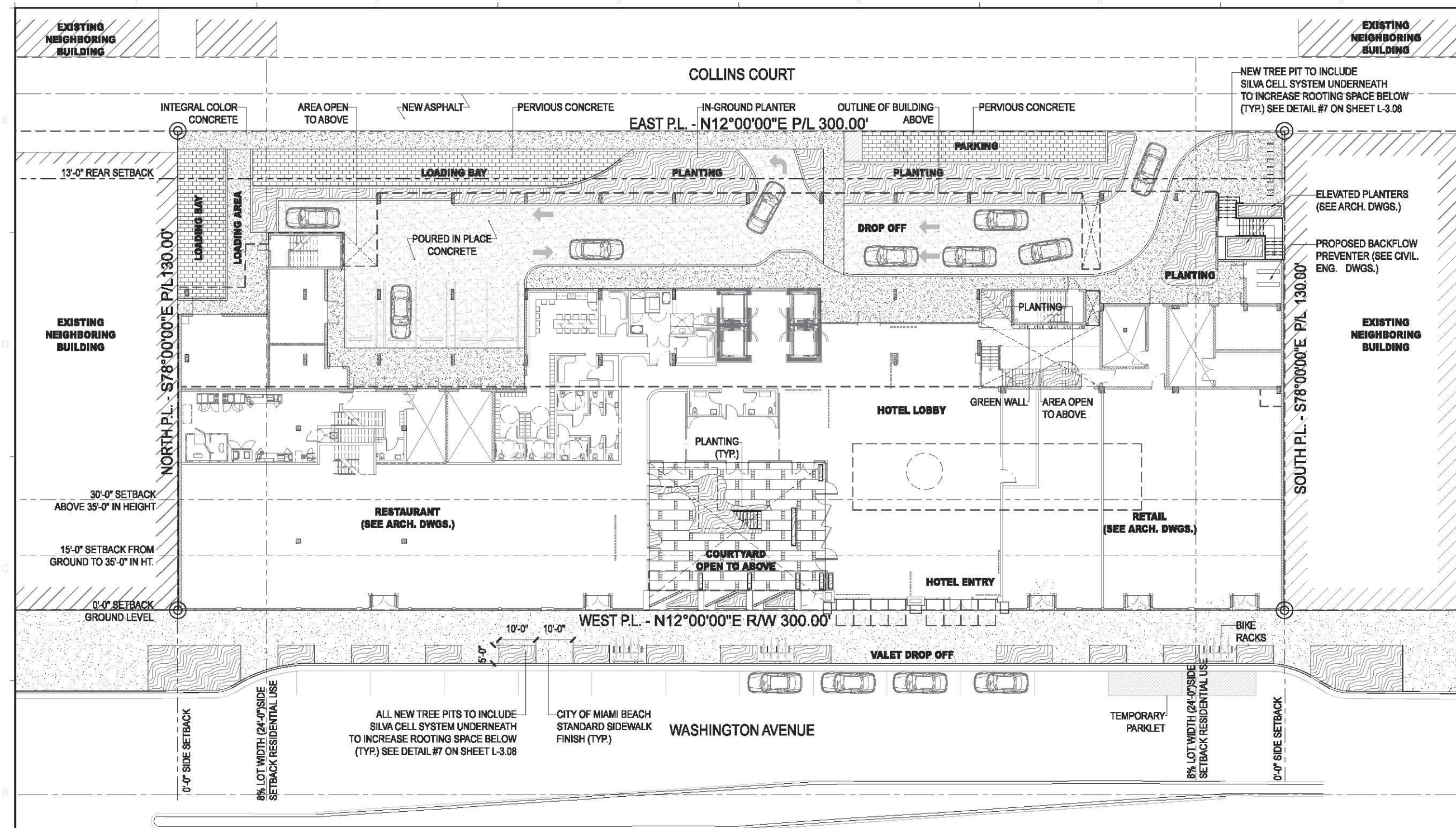
2815 Bluegrass Boulevard
Suite 200
Midvale, UT 84047
C: 800-673-1418
F: 800-673-9796

WWW.KOBIKARP.COM



DRAWN BY:	DJ & GG
CHECKED BY:	PA
DATE:	2016.08.28

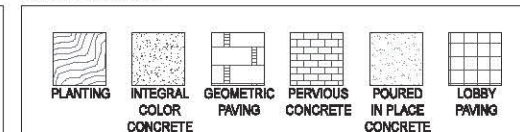
L-1.00



GENERAL SITE NOTES

1. GENERAL CONTRACTOR, SUBCONTRACTORS, AND INSTALLERS SHALL CROSS REFERENCE ARCH. DWGS., ENGINEERING DWGS., AND LANDSCAPE DWGS., THROUGHOUT THE IMPLEMENTATION TO ENSURE THE DESIGN INTENT IS MET. ANY DISCREPANCIES SHALL BE NOTED AND BROUGHT TO THE GENERAL CONTRACTOR'S ATTENTION.
2. SEE CIVIL AND ARCHITECTURE DRAWINGS FOR F.F.E & SURFACE DRAINAGE
3. SEE MEP AND CIVIL DRAWINGS FOR IRRIGATION CONNECTIONS.
4. SEE STRUCT. ENG. DRAWINGS FOR STRUCTURAL COMPONENTS.
5. SEE ELECTRICAL ENG. DRAWINGS FOR LANDSCAPE LIGHTING WIRING.
6. ALL WORK, MATERIALS, AND EQUIPMENT UTILIZED IN THIS PROJECT SHALL BE INSTALLED IN STRICT ACCORDANCE WITH THE GOVERNING ZONING & BUILDING CODE, MANUFACTURER'S RECOMMENDATIONS, AND SPECIFICATIONS.
7. CONTRACTOR SHALL BE RESPONSIBLE FOR VISITING SITE PRIOR TO BIDDING IN ORDER TO FAMILIARIZE THEMSELVES WITH ALL EXISTING CONDITIONS AFFECTING THE WORK, INCLUDING BUT NOT LIMITED TO PRIVATE AND PUBLIC UTILITIES, ON AND OFF SITE, ACCESS ROADS, AND OTHER SUPPORT FACILITIES.
8. CONTRACTOR MUST NOTIFY LANDSCAPE ARCHITECT IMMEDIATELY OF ANY UNEXPECTED OR UNKNOWN CONDITIONS OR DISCREPANCIES IN THE DRAWINGS AND CONTRACT DOCUMENTS, AS WELL AS ANY ERRORS OR OMISSIONS ON THE DRAWINGS PRIOR TO PROCEEDING WITH THE WORK OR SHOP FABRICATION.
9. CONTRACTOR SHALL PREPARE AND MAINTAIN ALL CONSTRUCTION AREAS, AS WELL AS SURROUNDING AREAS FREE OF DEBRIS OR HAZARDOUS EQUIPMENT AT ALL TIMES.

GRAPHIC LEGEND



SCOPE OF WORK

● HARDSCAPE, LANDSCAPE, IRRIGATION, AND LANDSCAPE LIGHTING.

LVL 1 HARDSCAPE PLAN
SCALE: 3/32" = 1'-0"

1611

JULIAN SPRINGER AND TONY TOTTEN INCHARGE APPEARANCE MENING
CONSTITUTE THE CHAIRMAN AND DEPUTY CHAIRMAN OF THE
BIOGRAPHICAL BOARD, AND SPRINGER, CHAIRMAN, AND TOTTEN
THEY WERE IN THE CHAIRMAN'S OFFICE IN THE CHAIRMAN'S
OFFICE IN THE CHAIRMAN'S OFFICE IN THE CHAIRMAN'S OFFICE

915 Washington Avenue
Miami Beach, FL 33139

Beam

LVL 1 HARDSCAPE PLAN

PETER N. ANSELMO
R.L.A. FL# 0007221

LANDSCAPE ARCHITECT
NATURAL/FICIAL
6815 RED ROAD SUITE 224
CORAL GABLES, FL 33143
FIRM# LC2800648
C: 306.321.2341

LIGHTSTONE
460 Park Avenue
New York, NY 10022
O: 212.616.9969

**ARCHITECTURE
INTERIOR DESIGN
PLANNING**

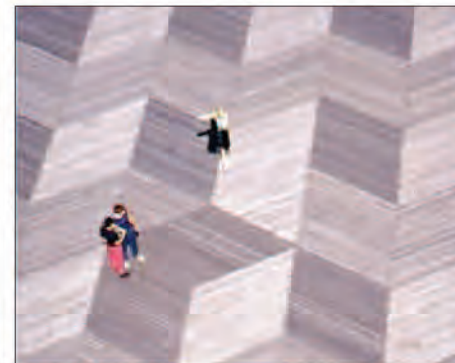
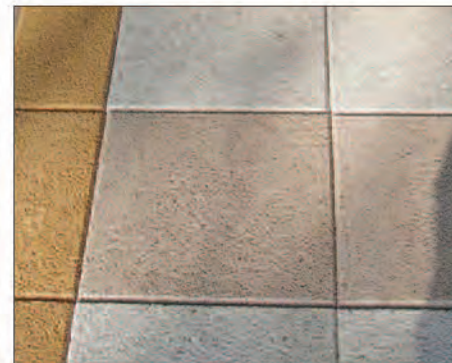
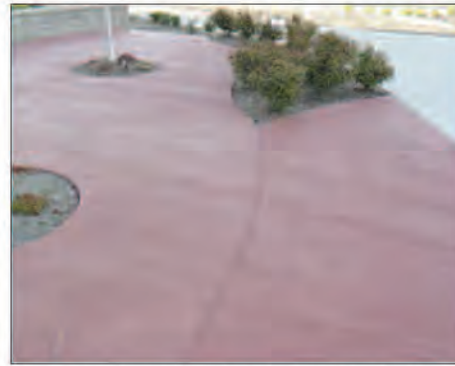
AIA ASID NCARB

2616 Bluegrass Boulevard
Suite 200
Miami, Florida 33137
T: 305.675.1618
F: 305.672.3766

WWW.KOBIAKARR.COM



DRAWN BY:	DJ & GG
CHECKED BY:	PA
DATE:	2016.08.28



LVL 1 HARDSCAPE REFERENCE IMAGES
SCALE: N.T.S.

[illegible]

1611

J.L. TRANQUARO, JR. and **PAUL T. WINTER**, JR. are senior research chemists at the University of Illinois, Urbana, and are members of the American Chemical Society. Mr. Winter is also a member of the American Nuclear Society. They are authors of numerous papers in the field of nuclear chemistry and are co-authors of the book "Radiochemical Analysis," published by McGraw-Hill.

LVL 1 HARDSCAPE REFERENCE IMAGES

PETER N. ANSELMO
R.L.A. FL# 6687221

LANDSCAPE ARCHITECT
NATURAL/FANCIAL
8815 RED ROAD SUITE 224
CORAL GABLES, FL 33143
FFRMAP LC26000548
C: 305.321.2341

LIGHTSTONE
400 Park Avenue
New York, NY 10022
Q: 212.616.9806

**ARCHITECTURE
INTERIOR DESIGN
PLANNING**

AIA ASID NCARB

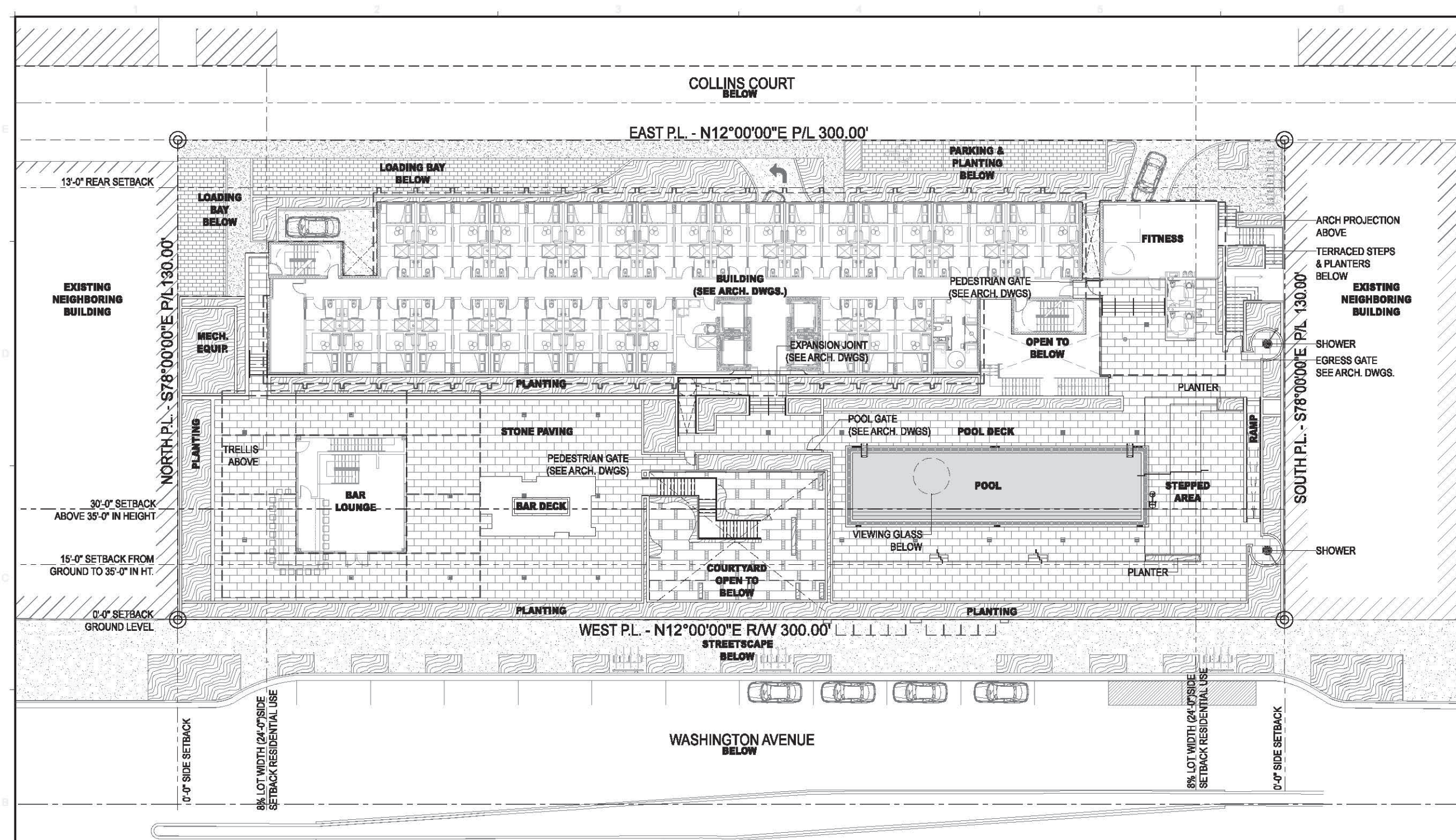
2018 Ellington Ave. #400
Suite 200
Miami, FL 33136
Tel: 305.575.5015
F: 305.575.5768

WWW.KOBIKARP.COM



DRAWN BY:	DJ & GS
CHECKED BY:	PA
DATE:	2015.05.26

L-1.02



LVL 2 HARDSCAPE PLAN
SCALE: 3/32" = 1'-0"

[illegible]

1611

ALL PHOTOGRAPHS AND SPOTTED MATERIAL APPEARING HEREIN
CONSTITUTE THE ORIGINAL AND UNREPRODUCED WORK OF JOHN
HARRIS, JR., AND MAY BE REPRODUCED, COPIED, OR OTHERWISE
TRANSMITTED IN ANY FORM OR BY ANY MEANS, WITHOUT THE WRITTEN
CONSENT OF JOHN HARRIS, JR., ARCHITECTURE, 4000 NORTH CENTRAL, SUITE 100, DALLAS, TEXAS 75204.

Room

915 Washington Avenue
Miami Beach, FL 33139

LVL 2 HARDSCAPE PLAN

PETER N. ANSELMINO
R.L.A. FL# 6887221

LANDSCAPE ARCHITECT
NATURALFICIAL
5815 RED ROAD SUITE 224
CORAL GABLES, FL 33143
FIRM# LC28000548
C: 305.321.2341

LIGHTSTONE
460 Park Avenue
New York, NY 10022
C: 212.616.9989

**ARCHITECTURE
INTERIOR DESIGN
PLANNING**

AIA ASID NCARB

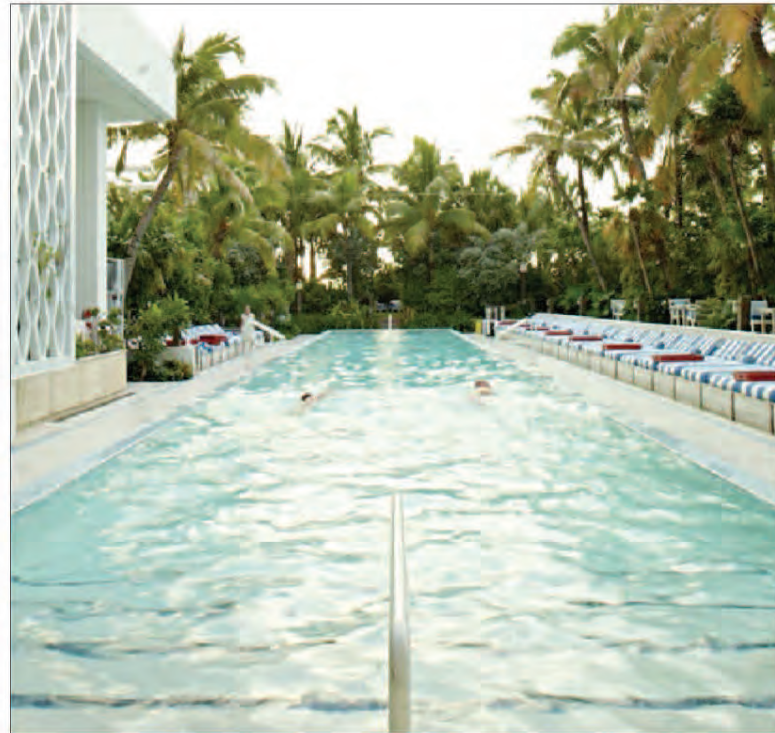
2215 Biscayne Boulevard
Suite 200
Miami, FL 33137
Tel: 305.673.1919
Fax: 305.673.1966

WWW.KOBIKARP.COM



DRAWN BY:	DJ & GG
CHECKED BY:	PA
DATE:	2016.08.28

L-1.03



LVL 2 HARDCAPE REFERENCE IMAGES
SCALE: N.T.S.

REVISIONS / SUBMISSIONS

1611

ALL CHANGES MUST BE WRITTEN MATERIAL APPEARING HEREIN
CONSTITUTE THE UNOFFICIAL UNPUBLISHED WORK OF THE
INFORMANT. THIS STATEMENT IS EMPLOYED UNDER AN ORIGINALLY
WITHIN THE FBI EXPRESS WRITTEN CONSENT OF BOTH PART
PERSONNEL AND IS INTENDED TO BE USED IN THE FBI.

beam
915 Washington Avenue
Miami Beach, FL 33139

noxy

PETER N. ANSELMINO
R.L.A. FL# 0007221

LANDSCAPE ARCHITECT
NATURALFICIAL
3915 RED ROAD SUITE 224
CORAL GABLES, FL 33143
FIRM# LC36000548
O: 305.321.2941

LIGHTSTONE
460 Park Avenue
New York, NY 10022
O: 212.616.8869

**ARCHITECTURE
INTERIOR DESIGN
PLANNING**

AIA ASID NCARB

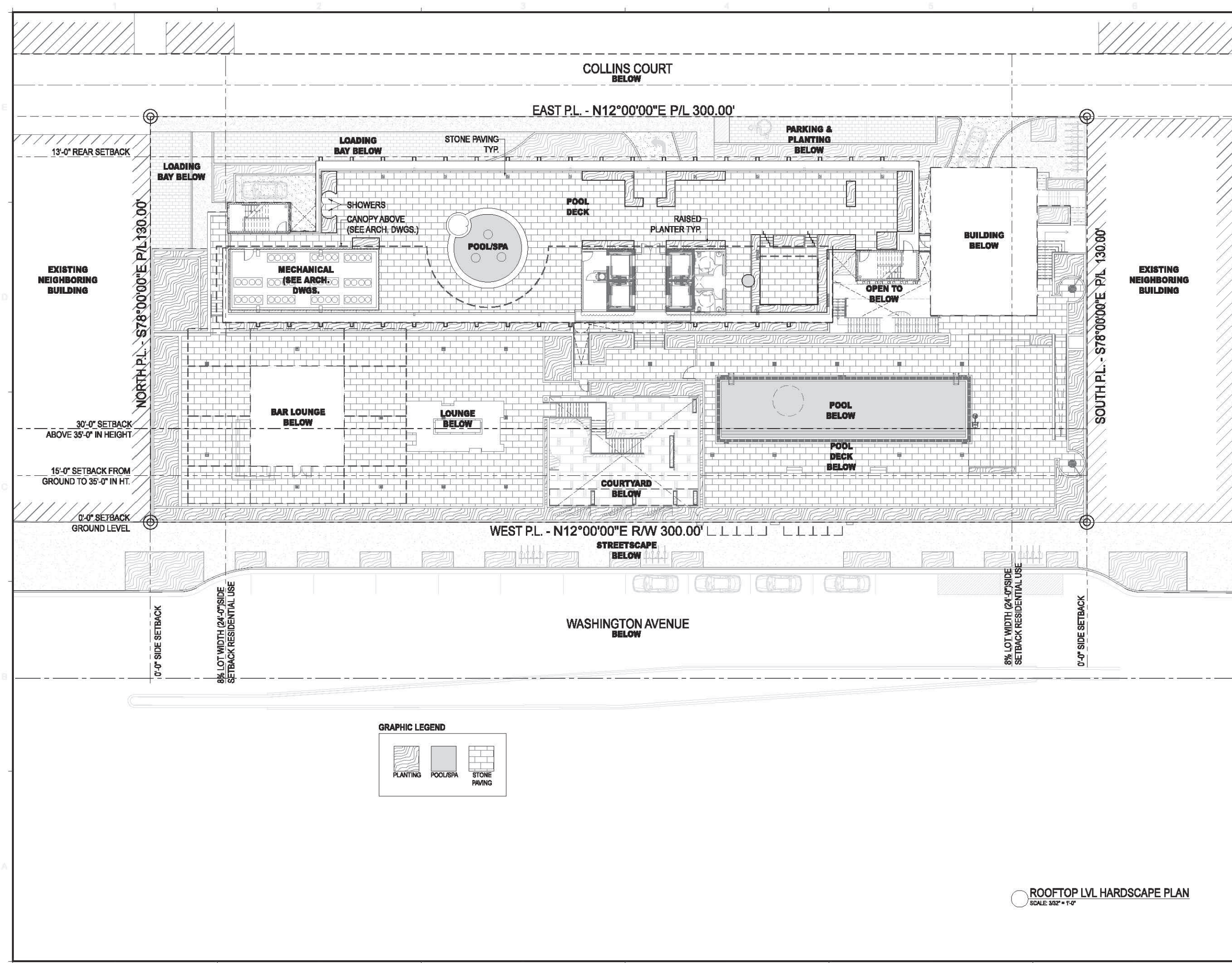
2916 Biscayne Boulevard
Suite 200
Miami, Florida 33127
C. 305.573.1818
F. 305.573.3788

WWW.KOBIKARP.COM

К О Б И
К А Р П

DRAWN BY:	DJ & GG
CHECKED BY:	PA
DATE:	2018.08.28

L-1.04

[illegible]

1611

ALL FOLLOWSHIPS AND SPOTTED MAGNOLIA APPEARING HEREIN
CONSTITUTE THE OFFICIAL AND UNPUBLISHED WORK OF THE
HARRIS ALA. AND MAYNARD BEECHER, JR., BORN, OR CHECKED
THIS DATE IS IN ADVANCE OF THE COMPLETION OF THE HARRIS
AND BEECHER, JR. BEECHER, JR. BORN, OR CHECKED

RoofTOP LVL HARDSCAPE PLAN

PETER N. ANSELMO
R.L.A. FL# 0687221

LANDSCAPE ARCHITECT
NATURALFICIAL
6915 RED ROAD SUITE 224
CORAL GABLES, FL 33143
FIRM# LC26000548
O: 305.321.2341

LIGHTSTONE
460 Park Avenue
New York, NY 10022
O: 212.616.9969

**ARCHITECTURE
INTERIOR DESIGN
PLANNING**

AIA ASID NCARB

2215 Biscayne Boulevard
Suite 200
Miami, Florida 33137
D: 305.673.1618
F: 305.673.3766

WWW.KOBIAKARP.COM



DRAWN BY:	DJ & GG
CHECKED BY:	PA
DATE:	2016.08.28

L-1.05





REVISIONS / SUBMISSIONS

1611

U.S. DEPARTMENT OF COMMERCE, INTERNATIONAL TRADE ADMINISTRATION, OFFICE OF FOREIGN ECONOMIC AFFAIRS, 1400 K STREET, N.W., WASHINGTON, D.C. 20540

115 Washington Avenue
Miami Beach, FL 33139

LVL 2 PLANTING REFERENCE IMAGES

PETER N. ANSELMO
R.L.A. FL# 0607221

LANDSCAPE ARCHITECT
NATURALFICIAL
3815 RED ROAD SUITE 224
CORAL GABLES, FL 33143
FIRM# LC26000548

LIGHTSTONE
400 Park Avenue
New York, NY 10022

**ARCHITECTURE
INTERIOR DESIGN
PLANNING**

AIA ASID NCARB

2018 Minnesota Boulevard
Suite 200
Miami, Florida 33157
C: 305.277.1915
F: 305.277.5086



KOBLOK

DRAWN BY:	DJ & G
CHECKED BY:	P
DATE:	2010.08.2

L-3.04

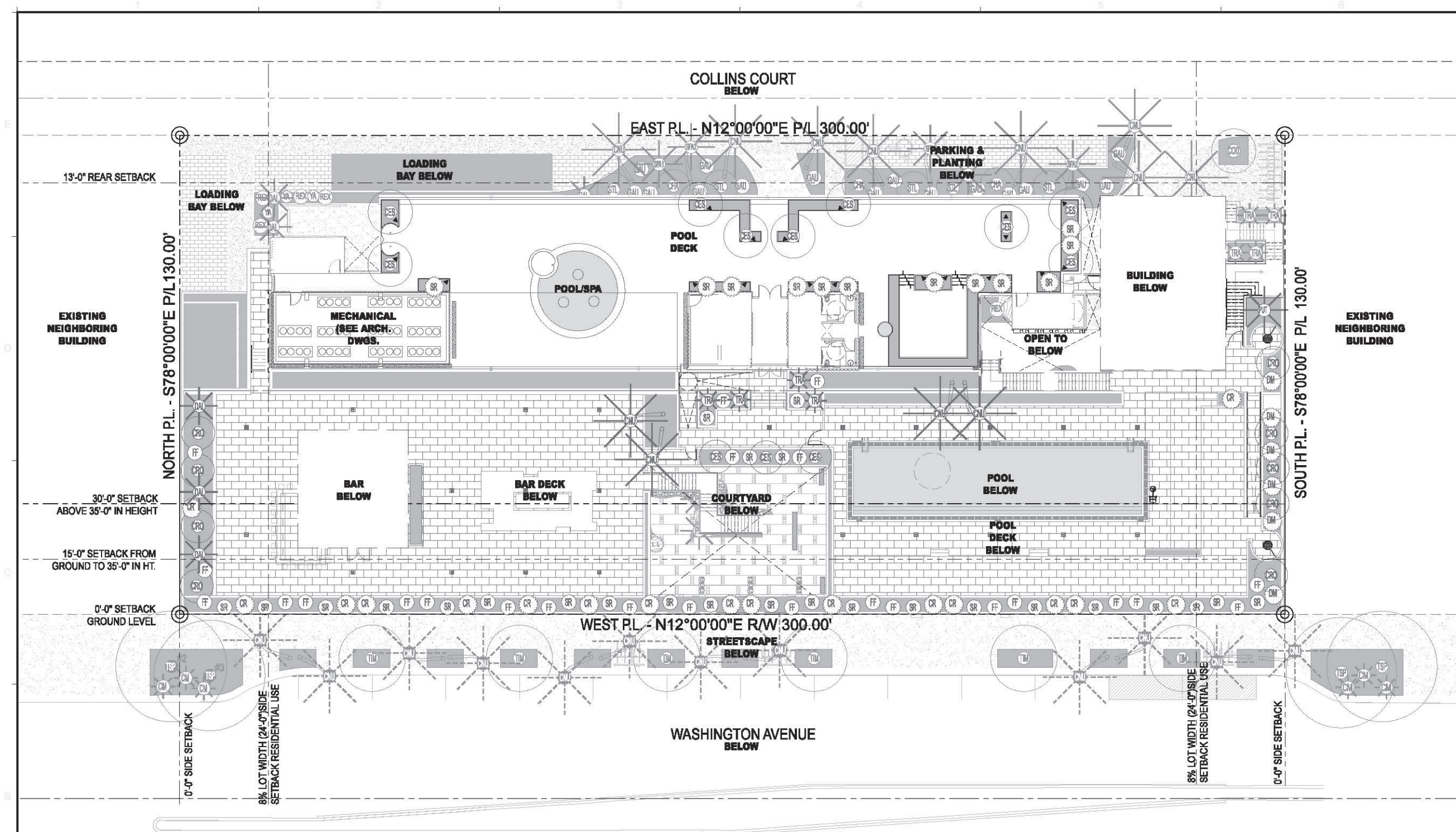
LVL 2 PLANTING REFERENCE IMAGES
SCALE: NTS




ROOFTOP LVL. PLANTING REFERENCE IMAGES
SCALE: N.T.S.



L-3.08



ROOFTOP LVL LANDSCAPE LIGHTING FIXTURE SCHEDULE							
QTY	TYP	SYMBOL	APPLICATION	MANUFACTURER	MODEL NUMBER	DESCRIPTION	COMMENTS
10	A		DIRECTIONAL UP LIGHT WITH 1/8" STAKE	AURORA LIGHTING	TELLURIDE LED: HSL18 HSL18-12- 16-27-CU-60- GR-BLP	Wattage 12 WATT Optics MEDIUM 25 LED INCANDESCENT ZROOK Material: COPPER Shield 80° ANGLED Mount Options: G/S GROUND STAKE Finish: BRONZE LIVING PATINA	U/L LISTED FOR WET LOCATION

ROOFTOP LVL LANDSCAPE LIGHTING PLAN
SCALE: 3/32" = 1'-0"

[illegible]

1611

ROOFTOP LVL LANDSCAPE LIGHTING PLAN

PETER N. ANSELMKO
R.L.A. FL# 06837221

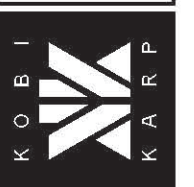
LANDSCAPE ARCHITECT
NATURAL/FICIAL
6915 RED ROAD SUITE 224
CORAL GABLES, FL 33143
FIRM# LC26000648
O: 305.321.2341

LIGHTSTONE
460 Park Avenue
New York, NY 10022
O: 212.616.9989

**ARCHITECTURE
INTERIOR DESIGN
PLANNING**

AIA ASID NCARB
2816 Bluegrass Boulevard
Suite 200
Miami, Florida 33137
Tel: 305.573.3796
Fax: 305.573.3796
P: 305.573.3796

WWW.KOBIKARP.COM



DRAWN BY:	DJ & GG
CHECKED BY:	PA
DATE:	2016.06.28

L-4.05

