

# The RALEIGH MASTERPLAN



OWNER

BSD RALEIGH PROPCO LLC  
C/O SHVO

745 Fifth Avenue  
New York, NY 10151  
O: 212.380.2100

ARCHITECT

KOBI KARP ARCHITECTURE  
& INTERIOR DESIGN, INC.

2915 Biscayne Boulevard, Suite 200  
Miami, FL 33137  
O: 305.573.1818

ARCHITECT

PETER MARINO ARCHITECT

150 East 58th Street  
New York, NY 10022  
O: 212.752.5444

ARCHITECTURAL HISTORIAN

ARTHUR MARCUS

1800 North Andrews Avenue #7F  
Fort Lauderdale, FL 33311  
O: 305.467.6141

PROFESSOR OF ARCHITECTURE  
AND HISTORY, PH.D.

JEAN-FRANCOIS  
LEJEUNE

20 Island Avenue #302  
Miami Beach, FL 33139  
O: 305.772.6729

LANDSCAPE

ENEA GARDEN DESIGN INC.

7500 Northeast 4th Court, Studio 104  
Miami, FL 33138  
O: 305.576.67027

CITY OF MIAMI BEACH  
HISTORIC PRESERVATION BOARD  
REBUTTAL

SEPTEMBER 8, 2020



---

# PRESERVATION AND RESTORATION

---

The Raleigh Hotel, 1945

RALEIGH HOTEL  
COLLINS AVENUE  
MIAMI BEACH, FLORIDA.









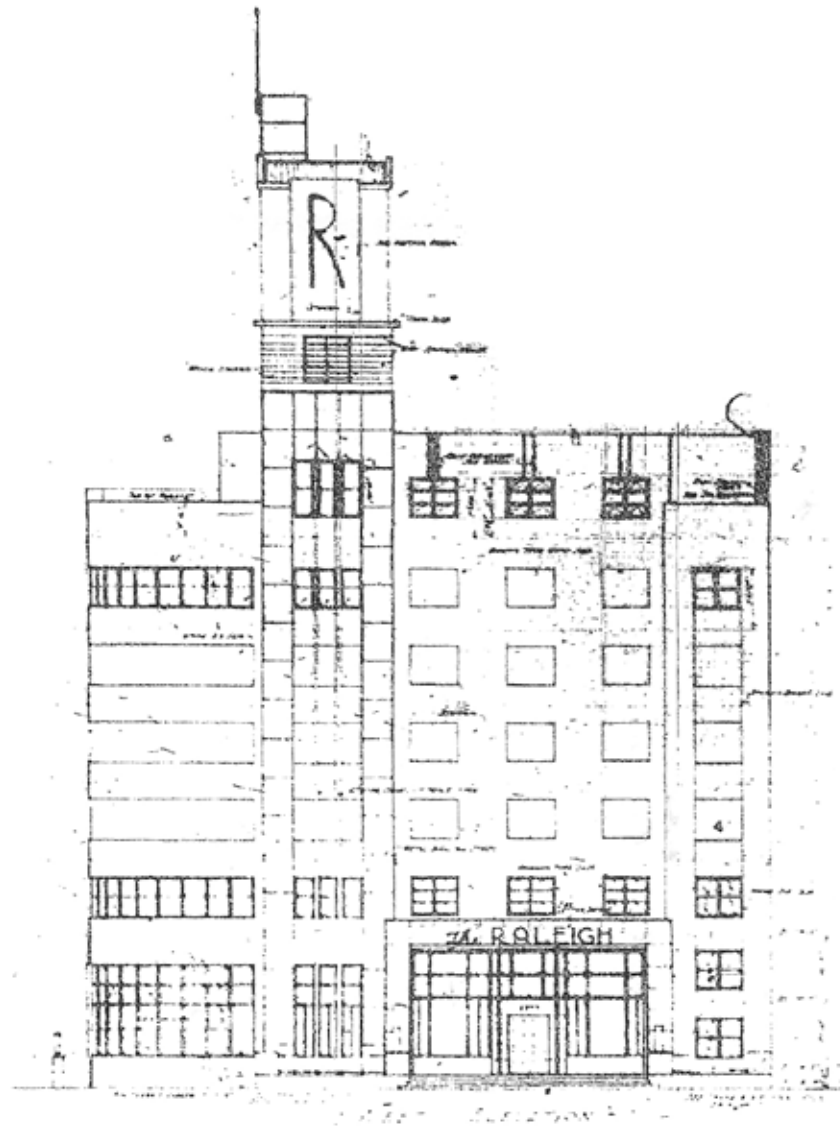
The Raleigh, Richmond, and South Seas Hotels, 1945



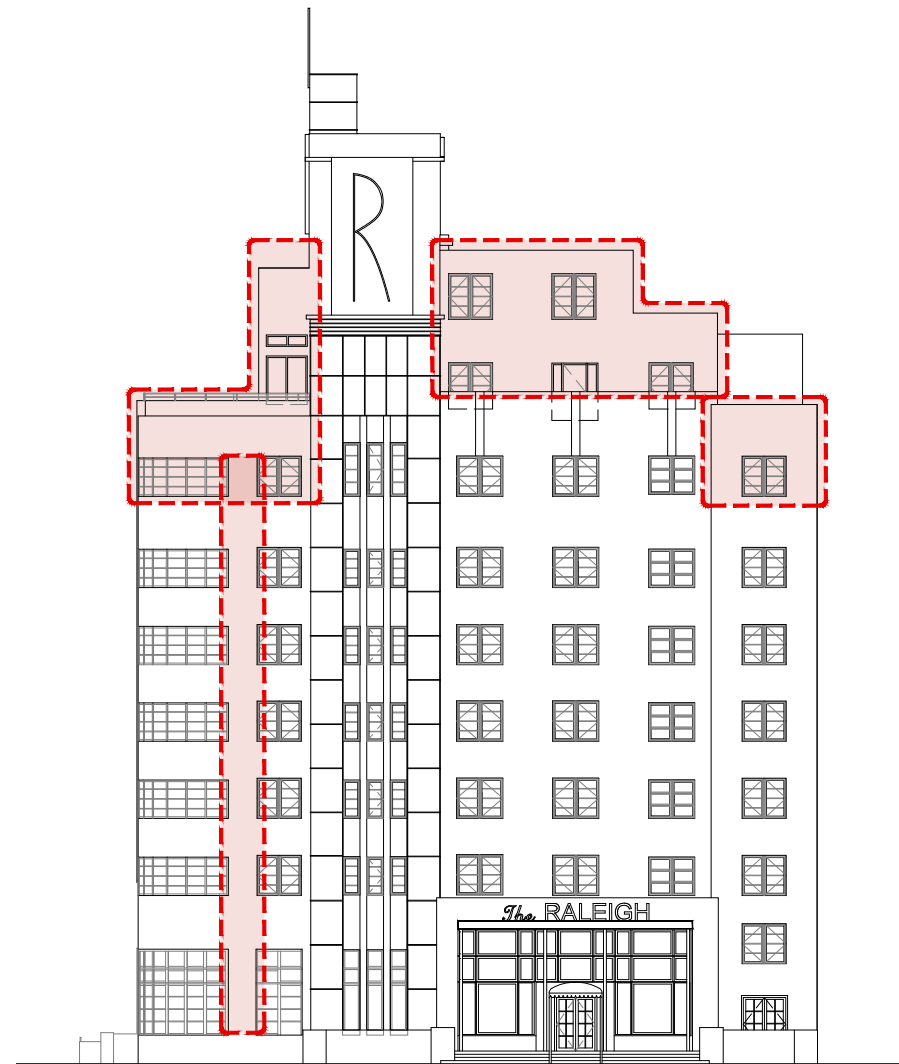




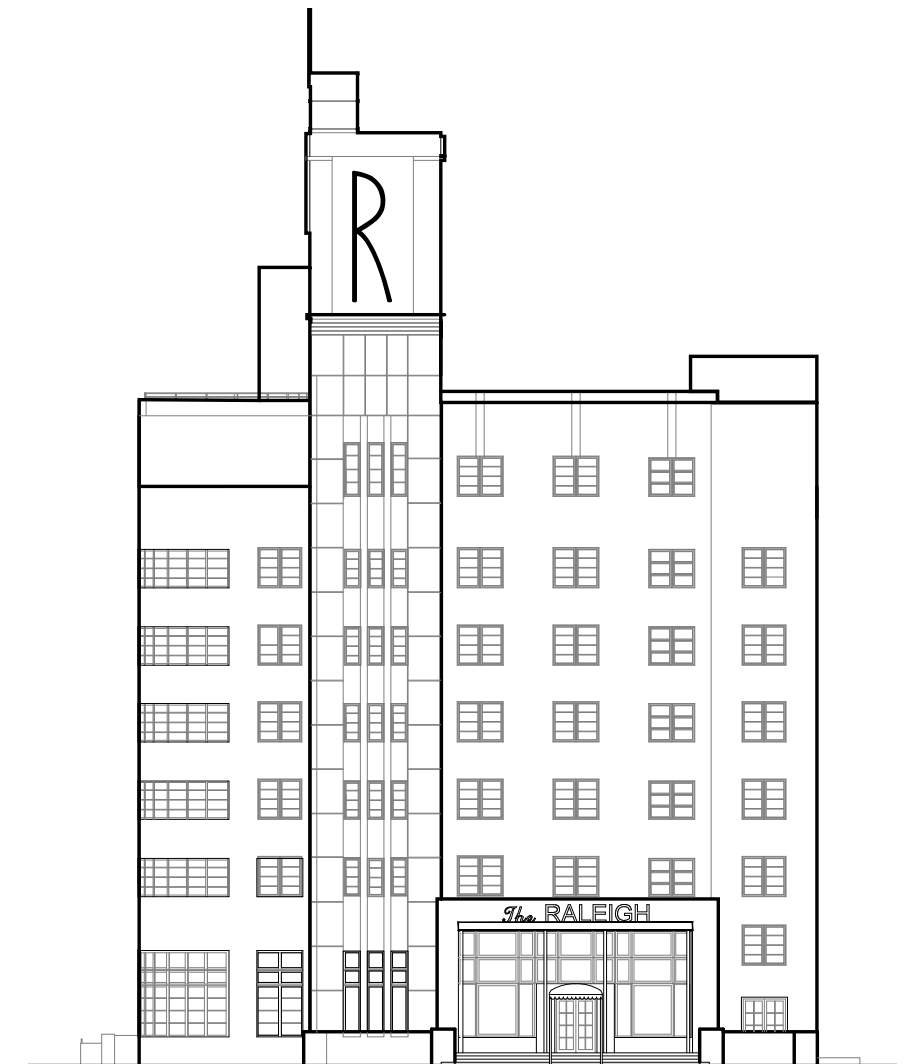




Original Elevation, 1940  
Lawrence Murray Dixon (Microfilm)

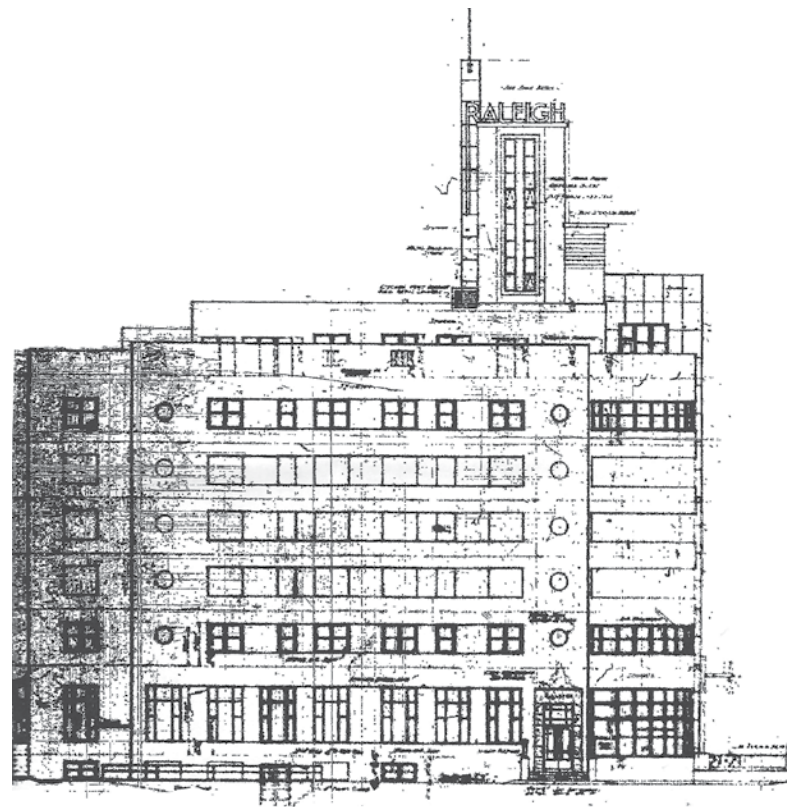


Existing Elevation (Approved)

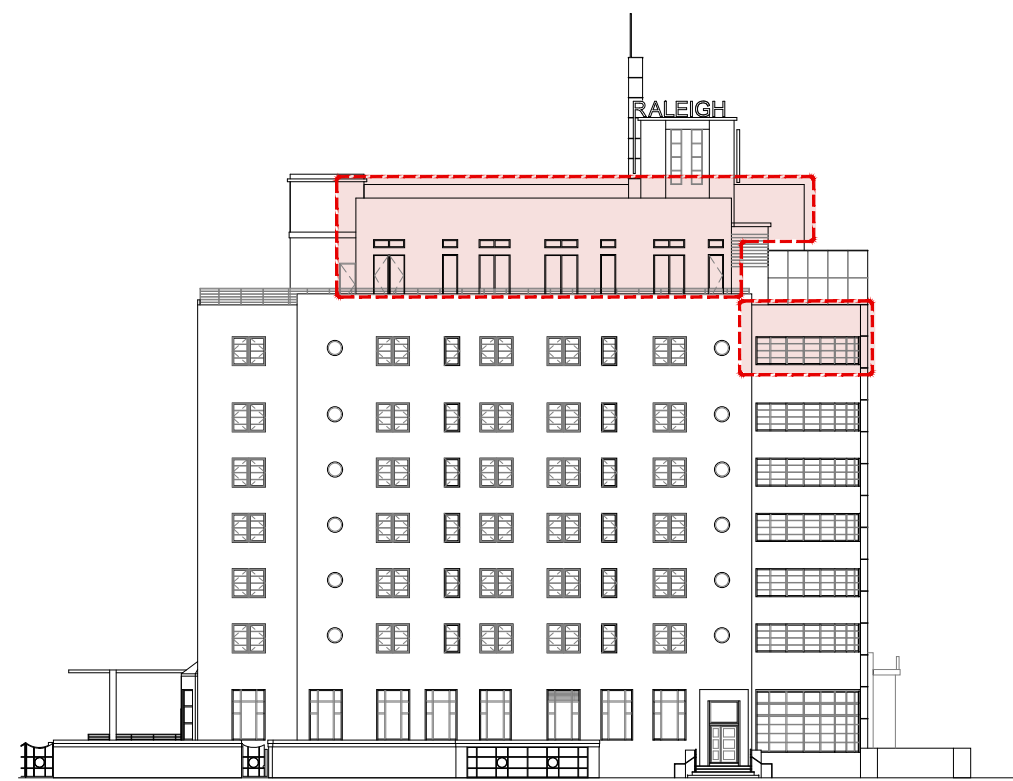


Proposed Elevation (Restoration)





Original Elevation, 1940  
Lawrence Murray Dixon (Microfilm)

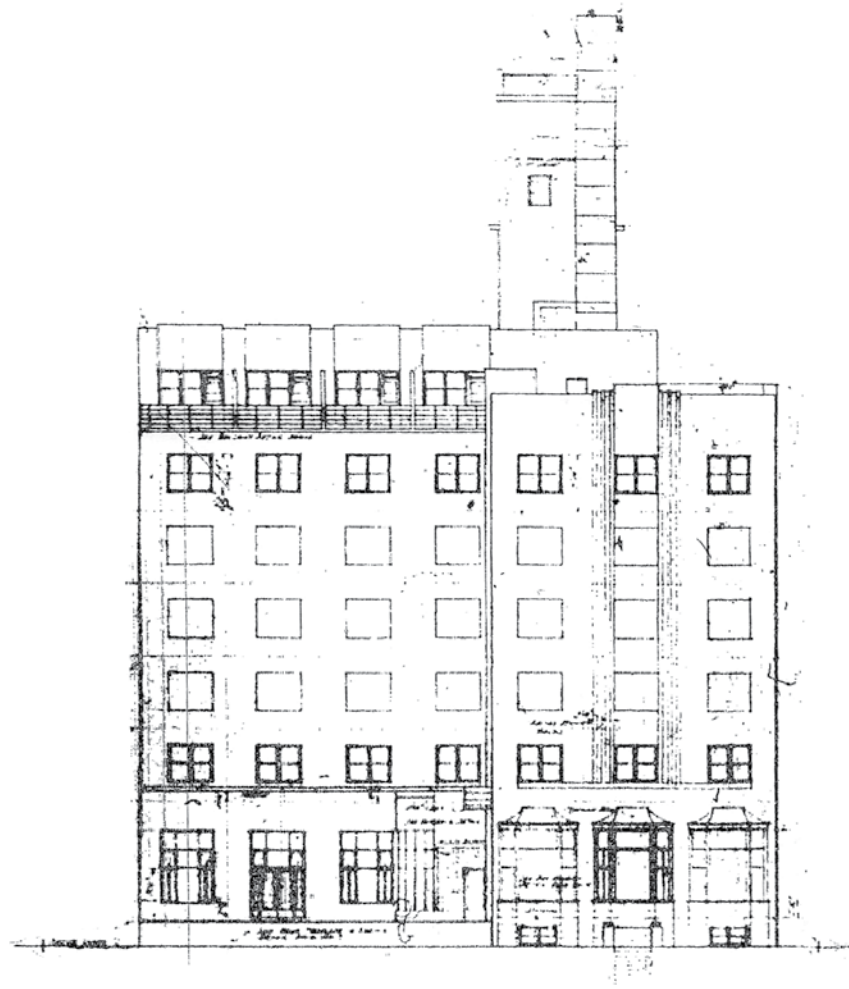


Existing Elevation (Approved)



Proposed Elevation (Restoration)

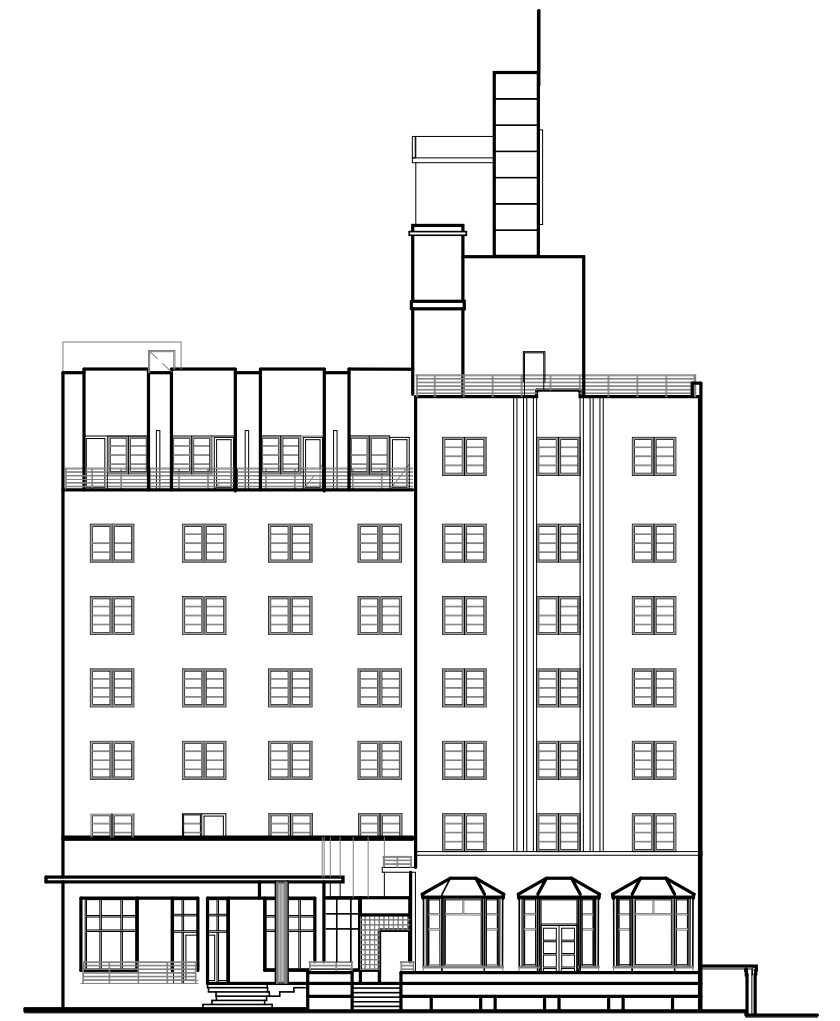




Original Elevation, 1940  
Lawrence Murray Dixon (Microfilm)

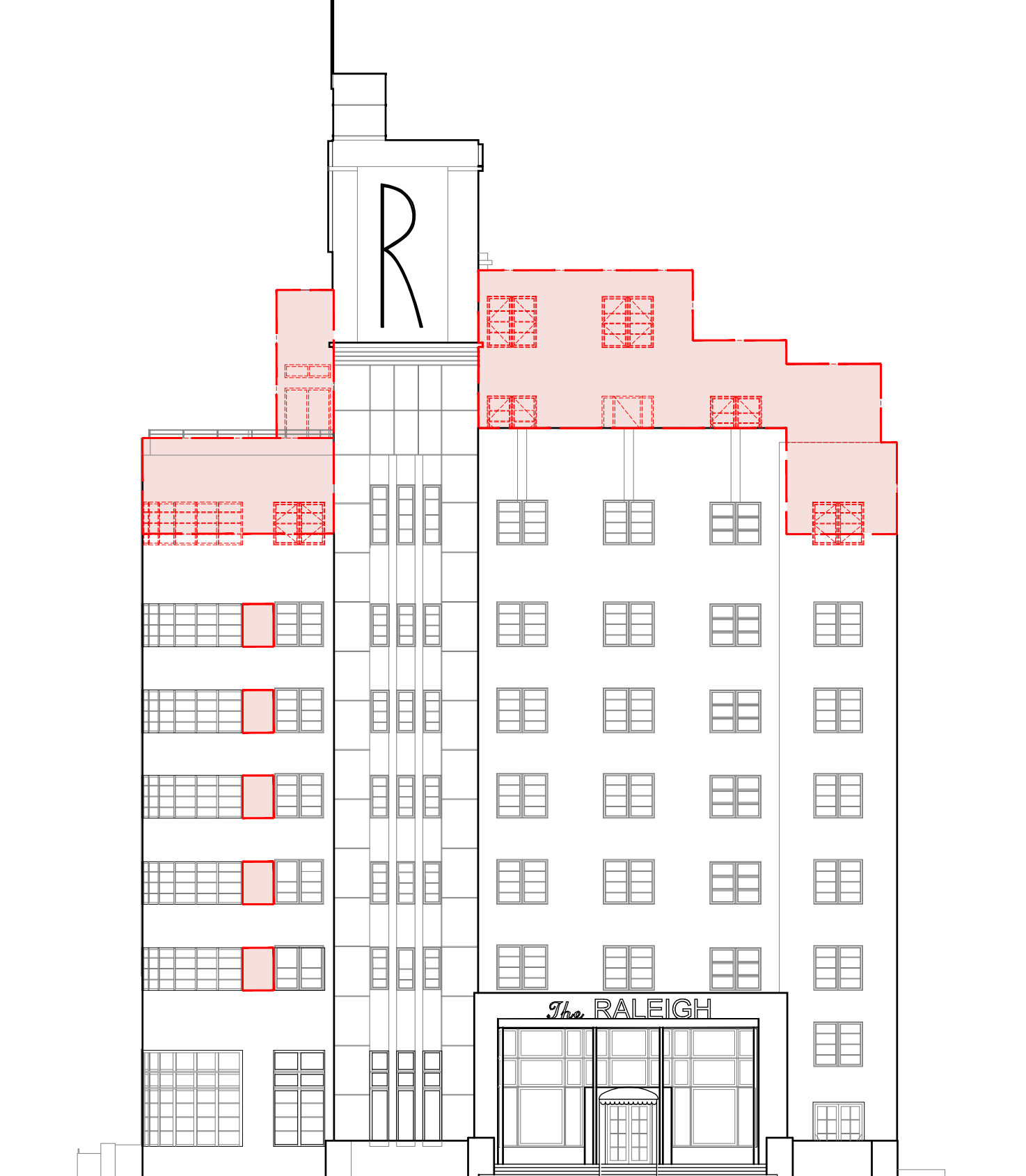


Existing Elevation (Approved)

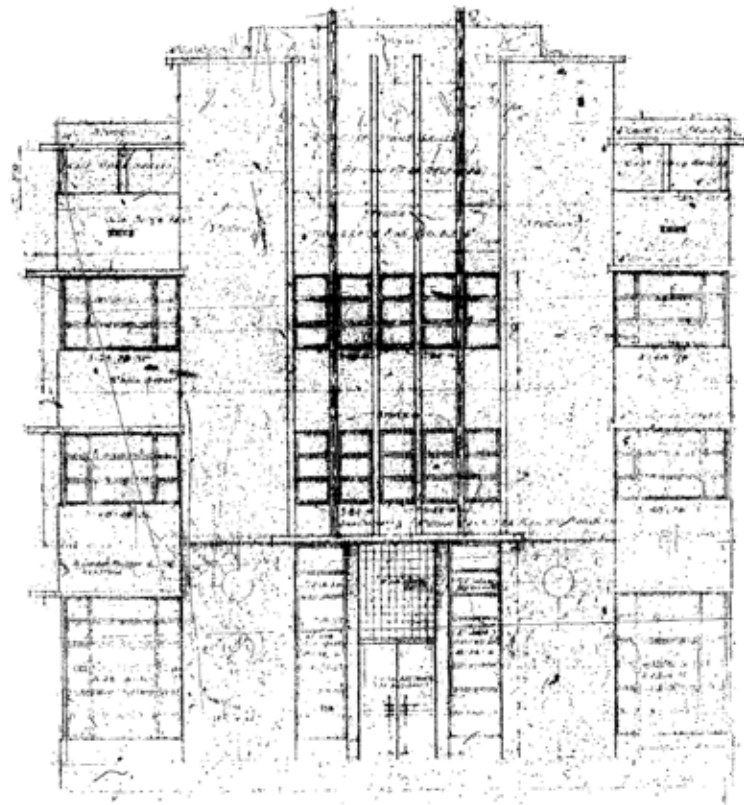


Proposed Elevation (Restoration)

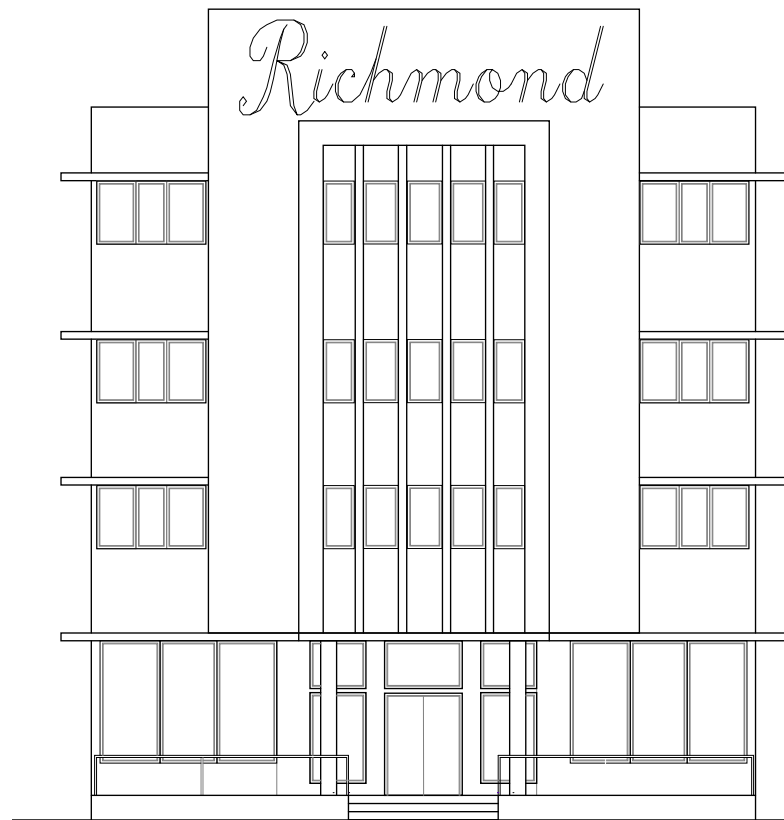




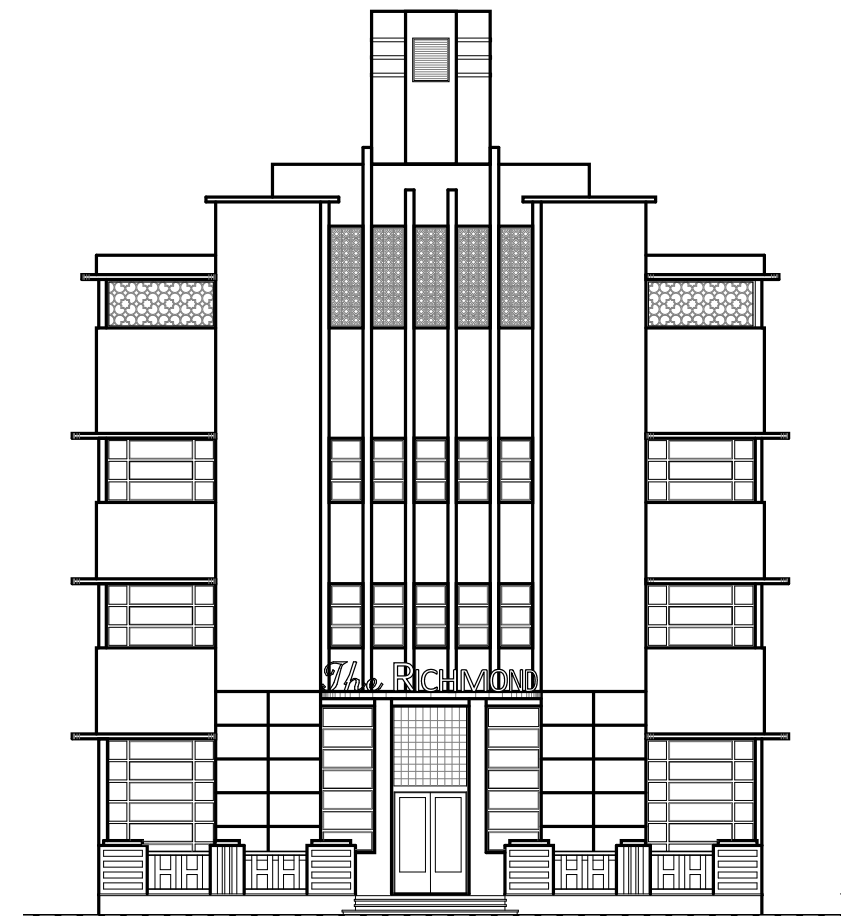




Original Elevation, 1940  
Lawrence Murray Dixon (Microfilm)

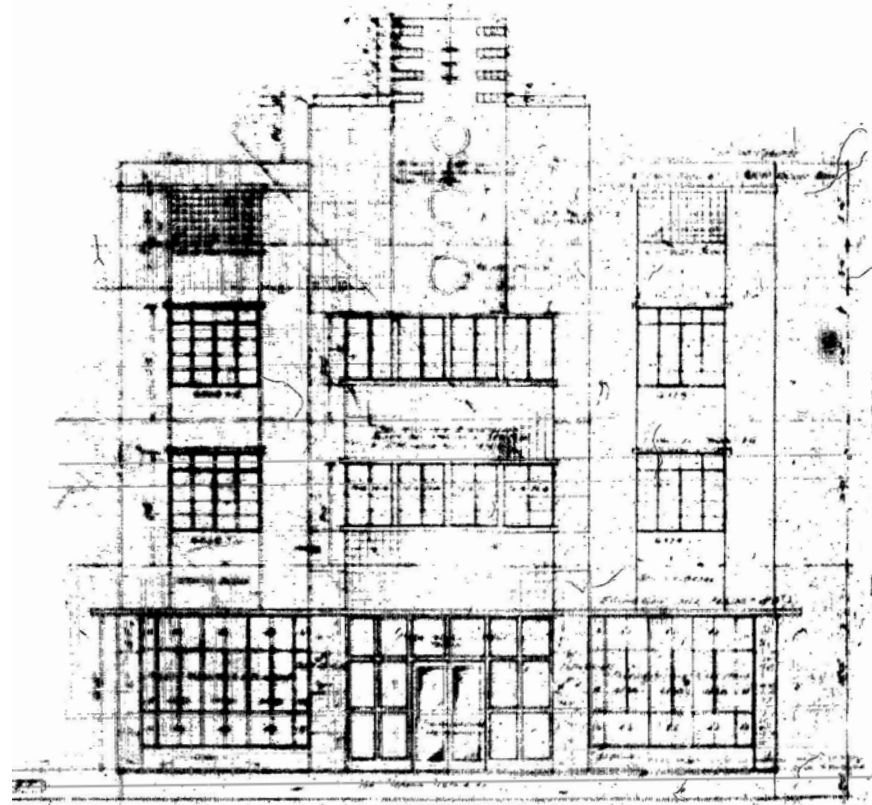


Existing Elevation (Approved)

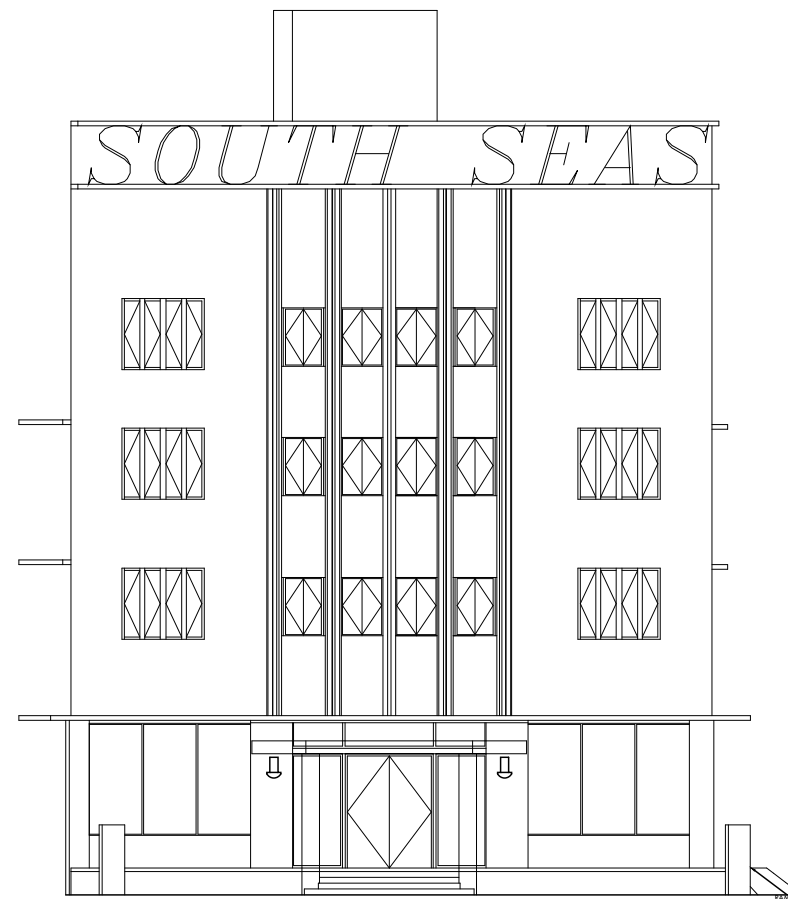


Proposed Elevation (Restoration)

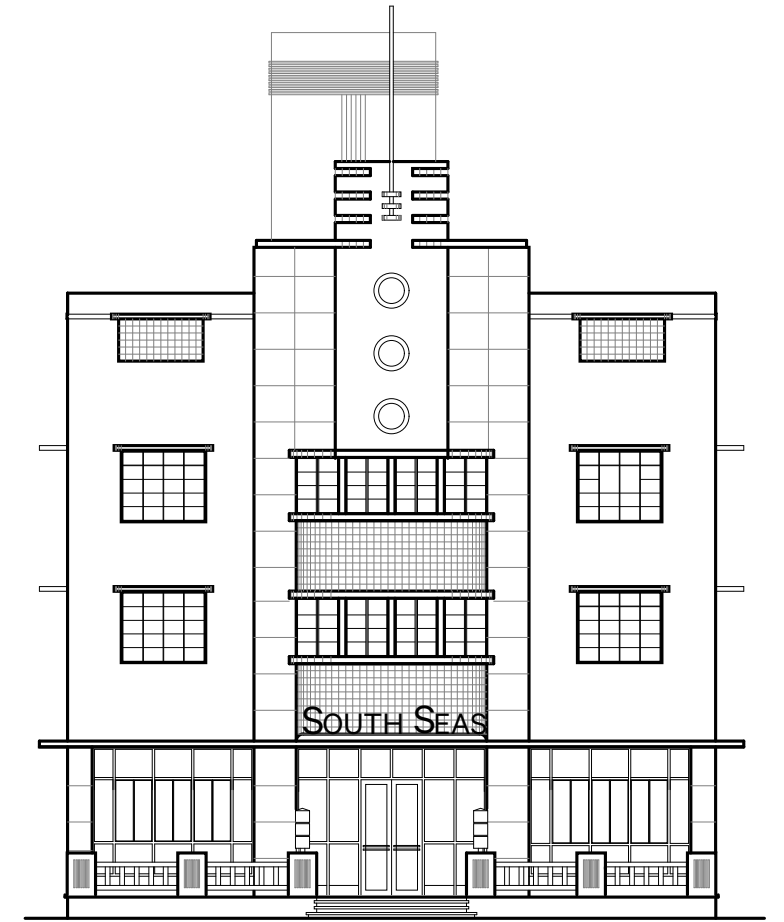




Original Elevation, 1940  
Lawrence Murray Dixon (Microfilm)



Existing Elevation (Approved)



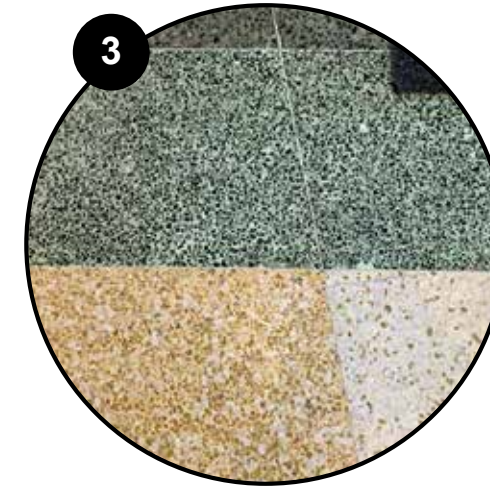
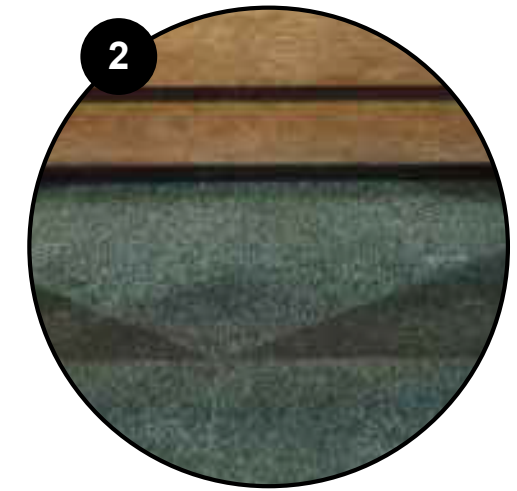
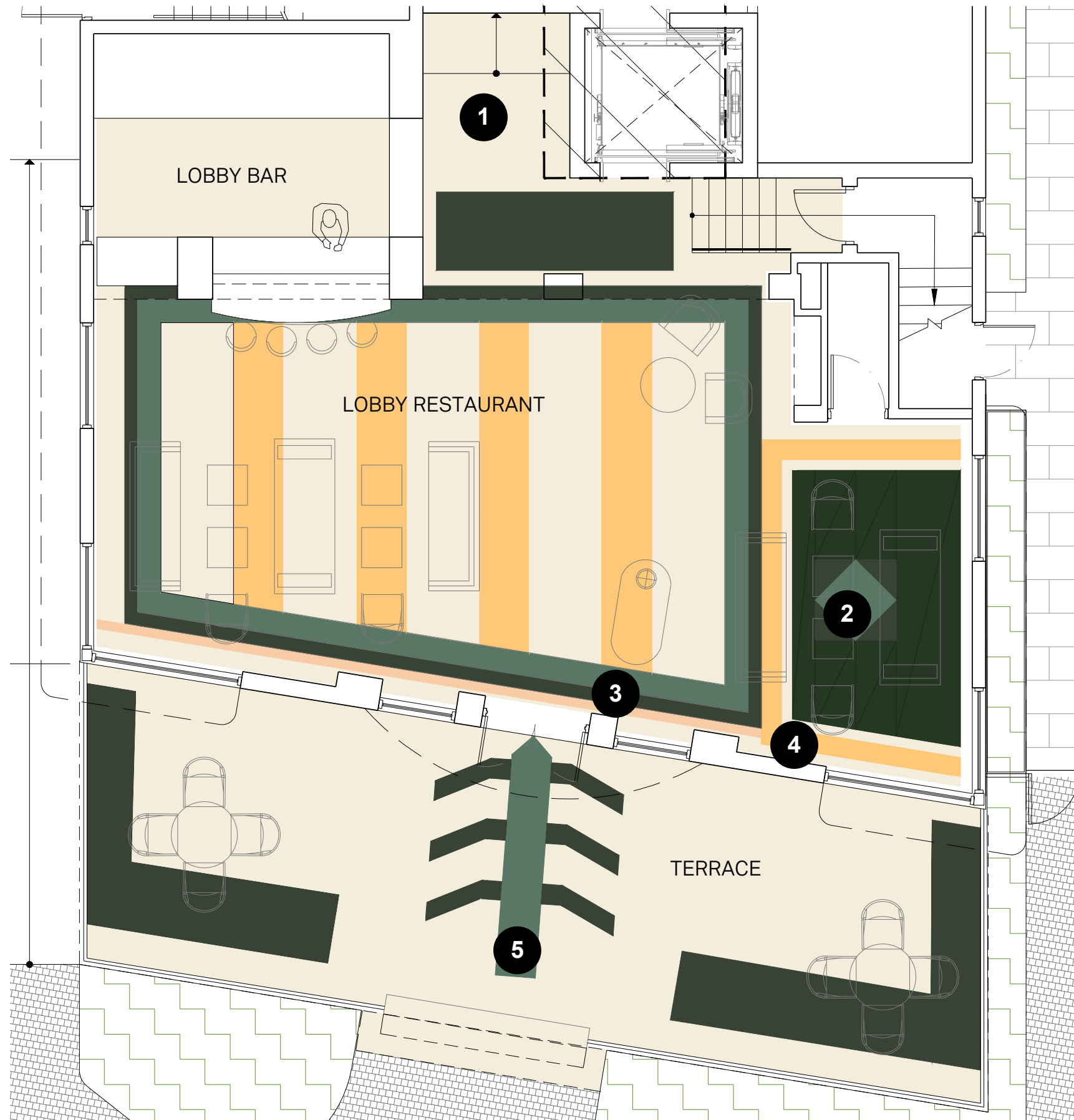
Proposed Elevation (Restoration)

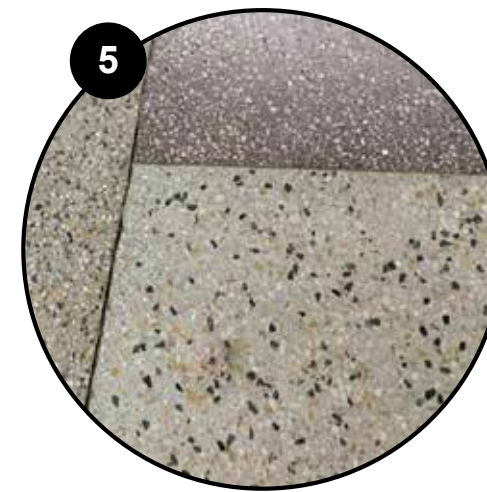
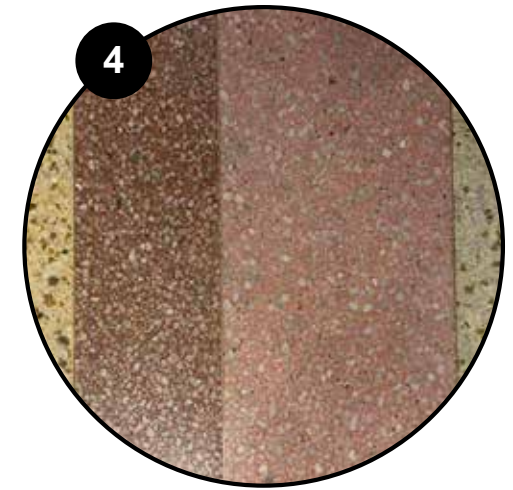
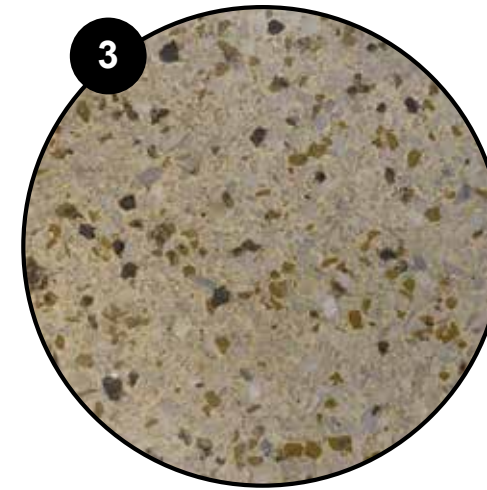
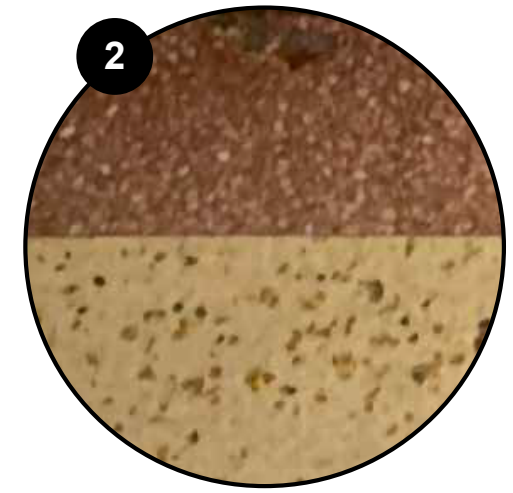
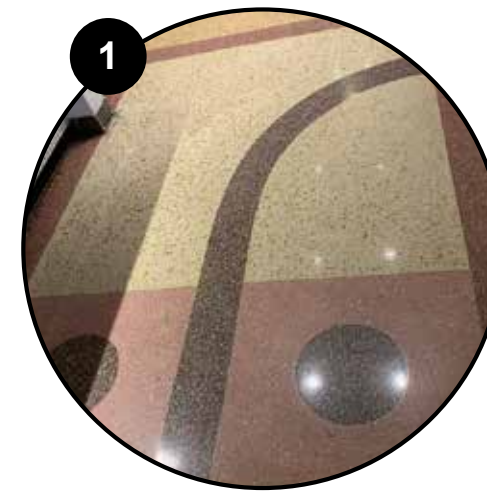
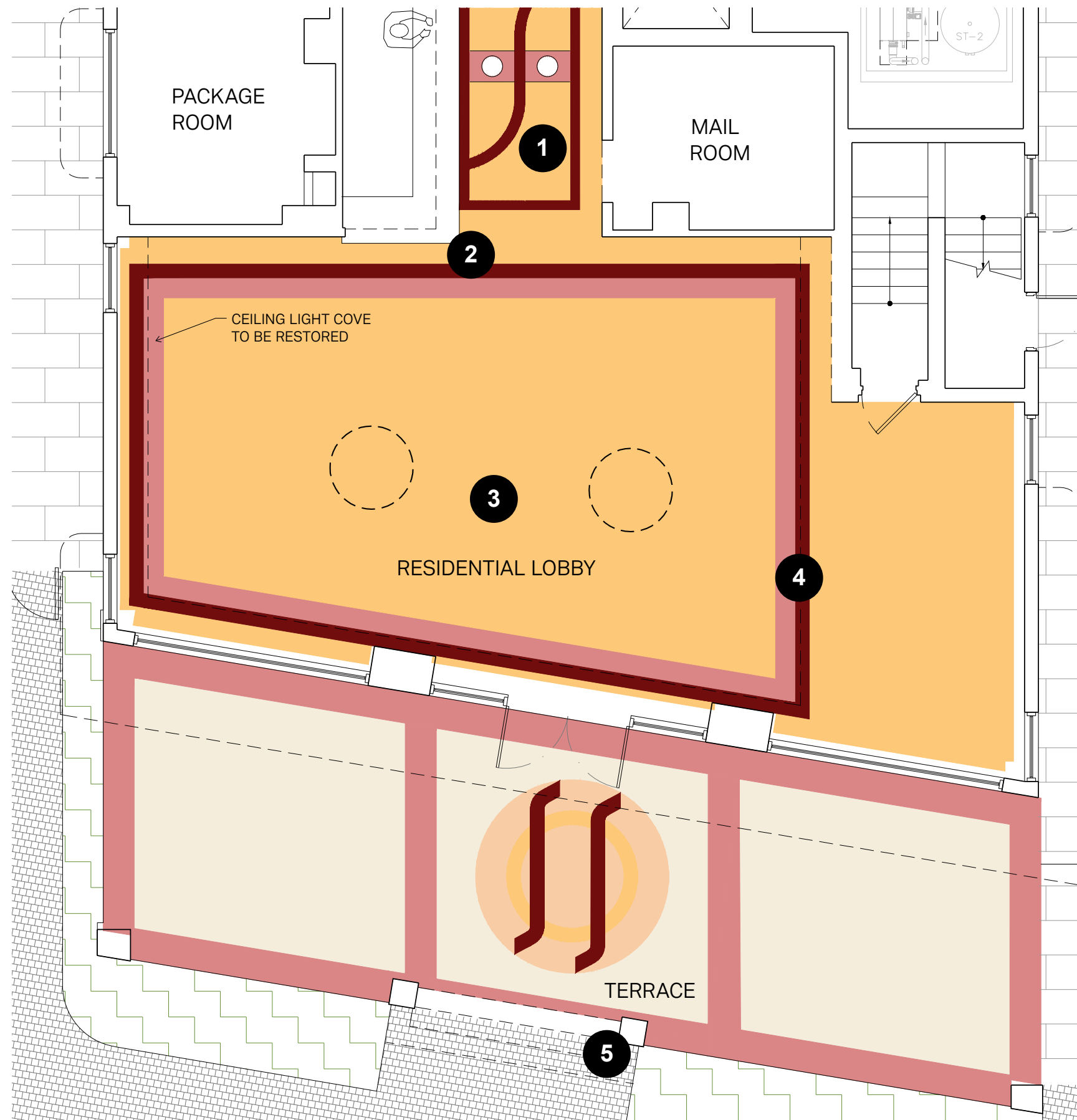


Proposed Restoration of the Raleigh Hotel















---

# CONTEXT

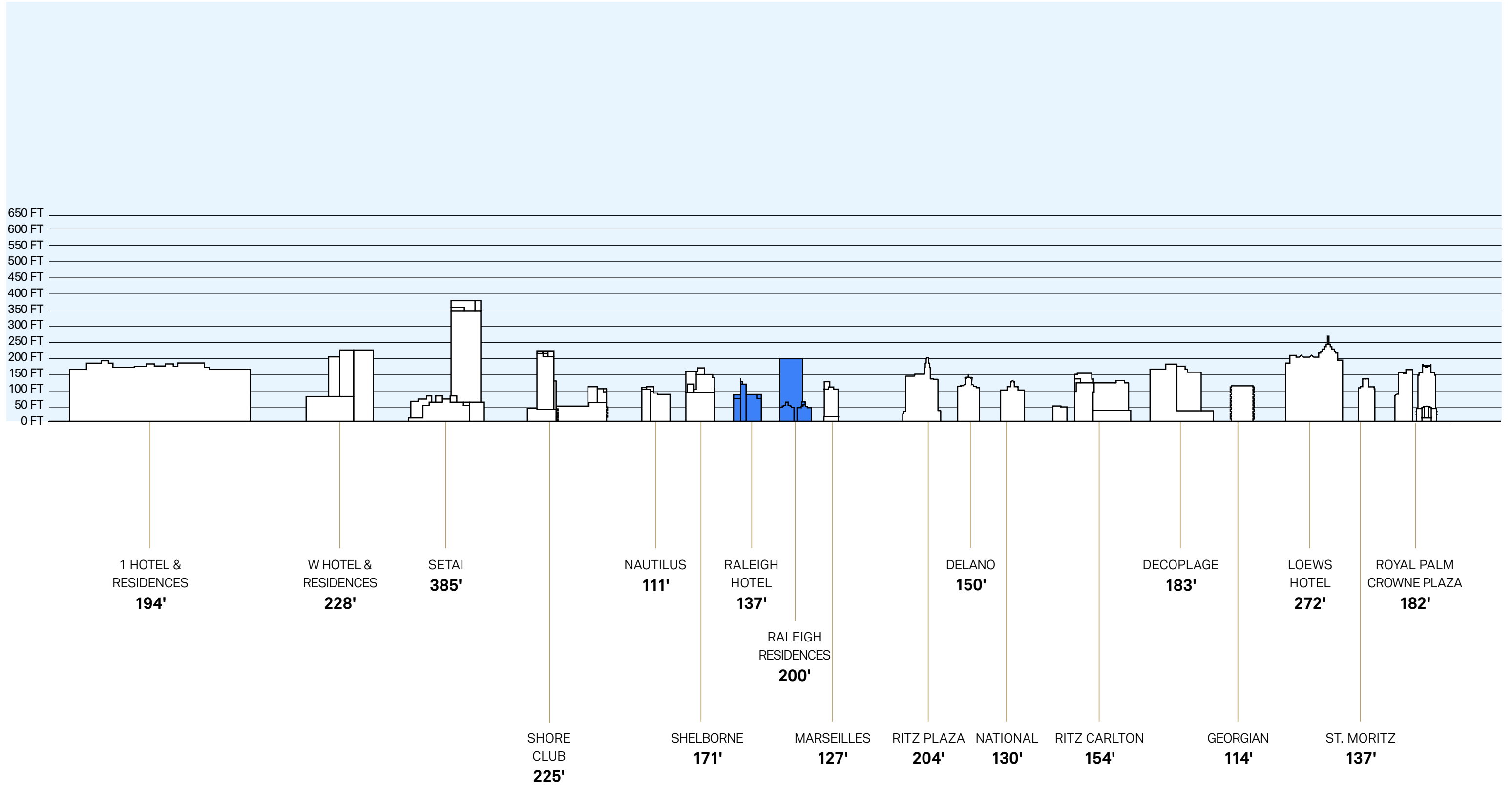
---



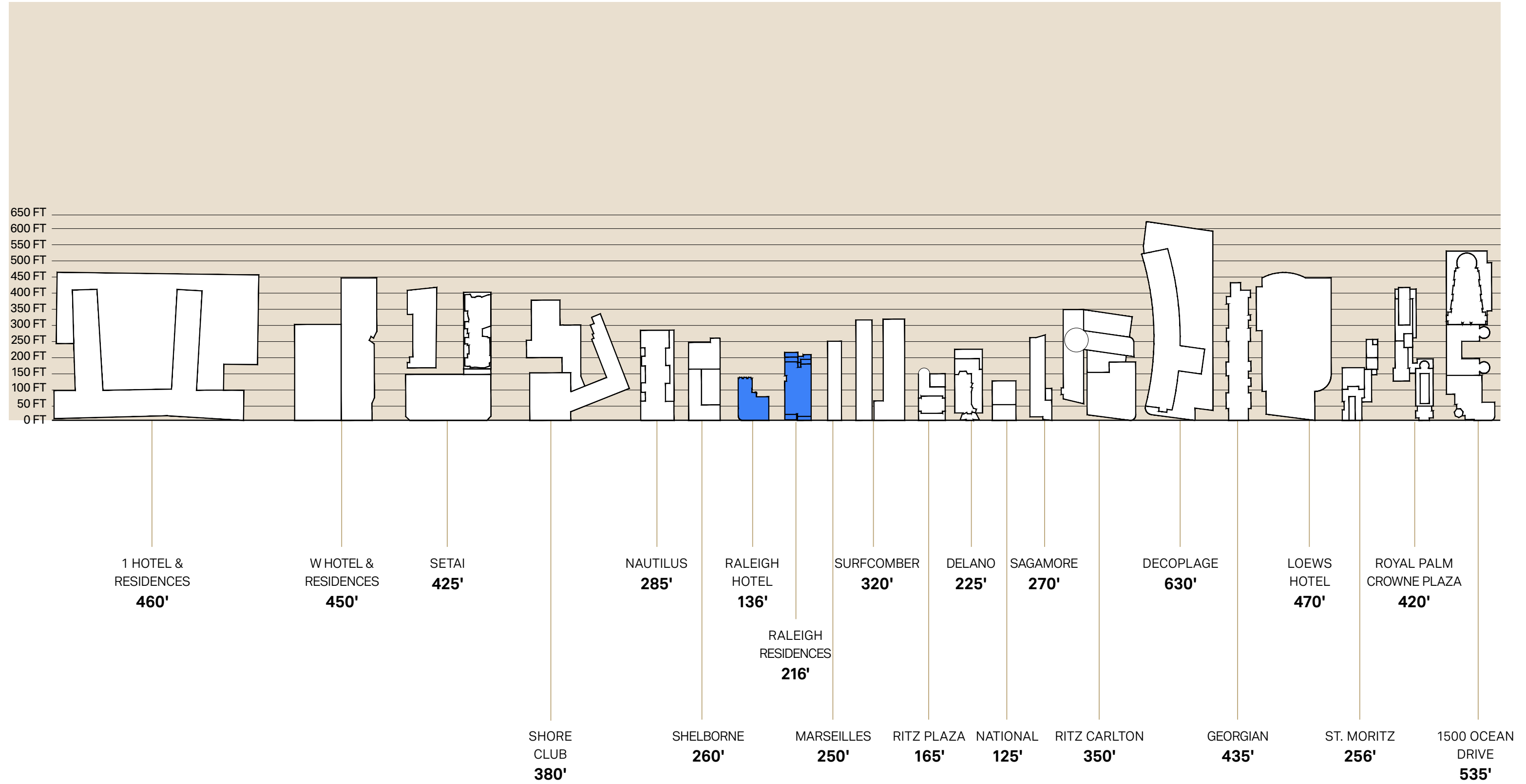
# Contextual Height Survey











\*All dimensions are approximate



---

BUILDING

---









































































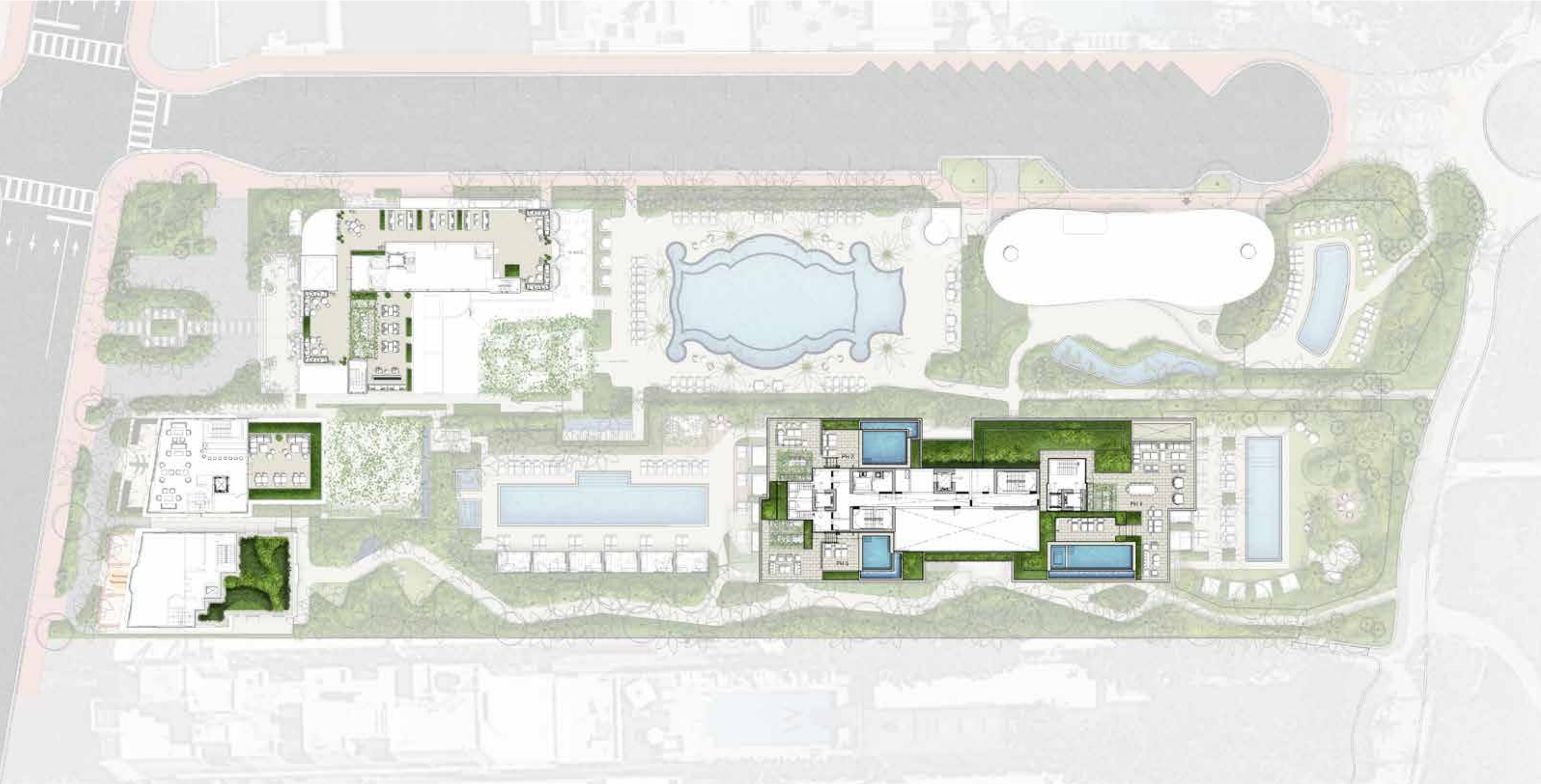




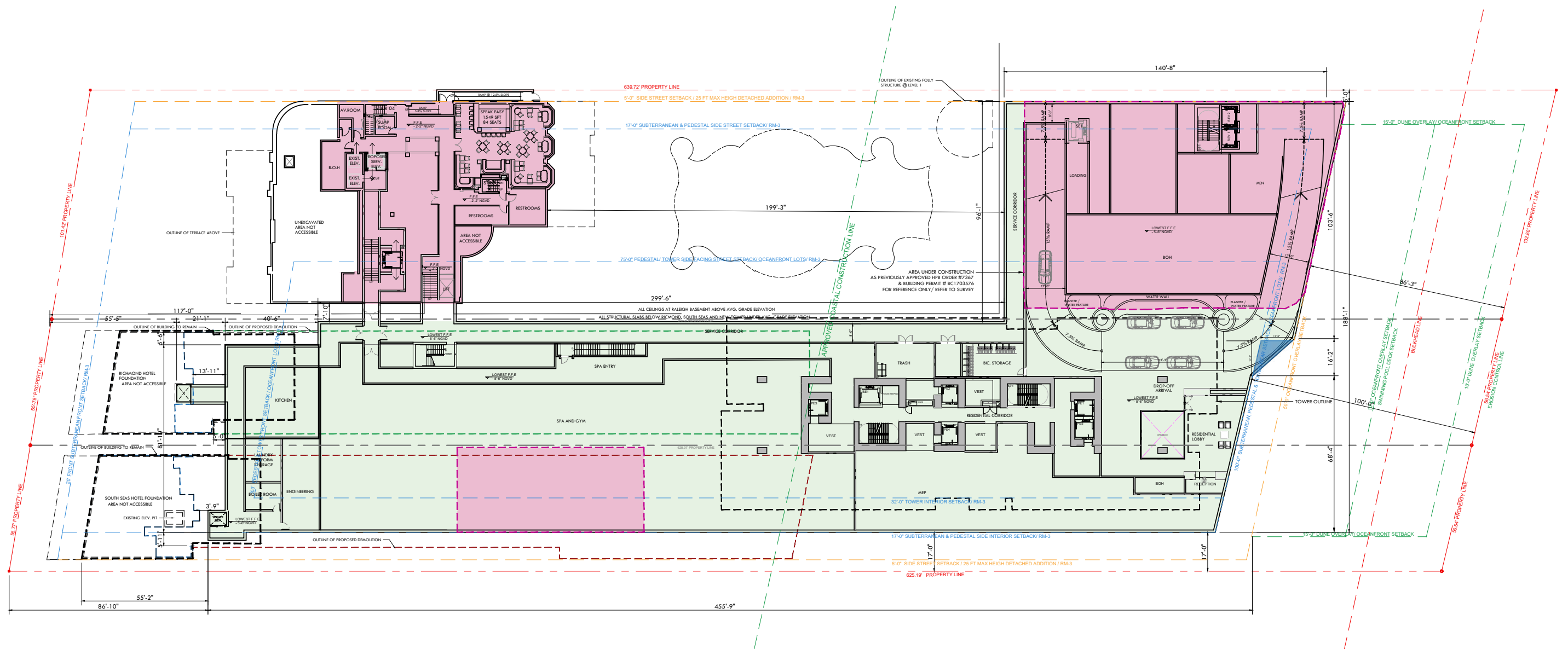






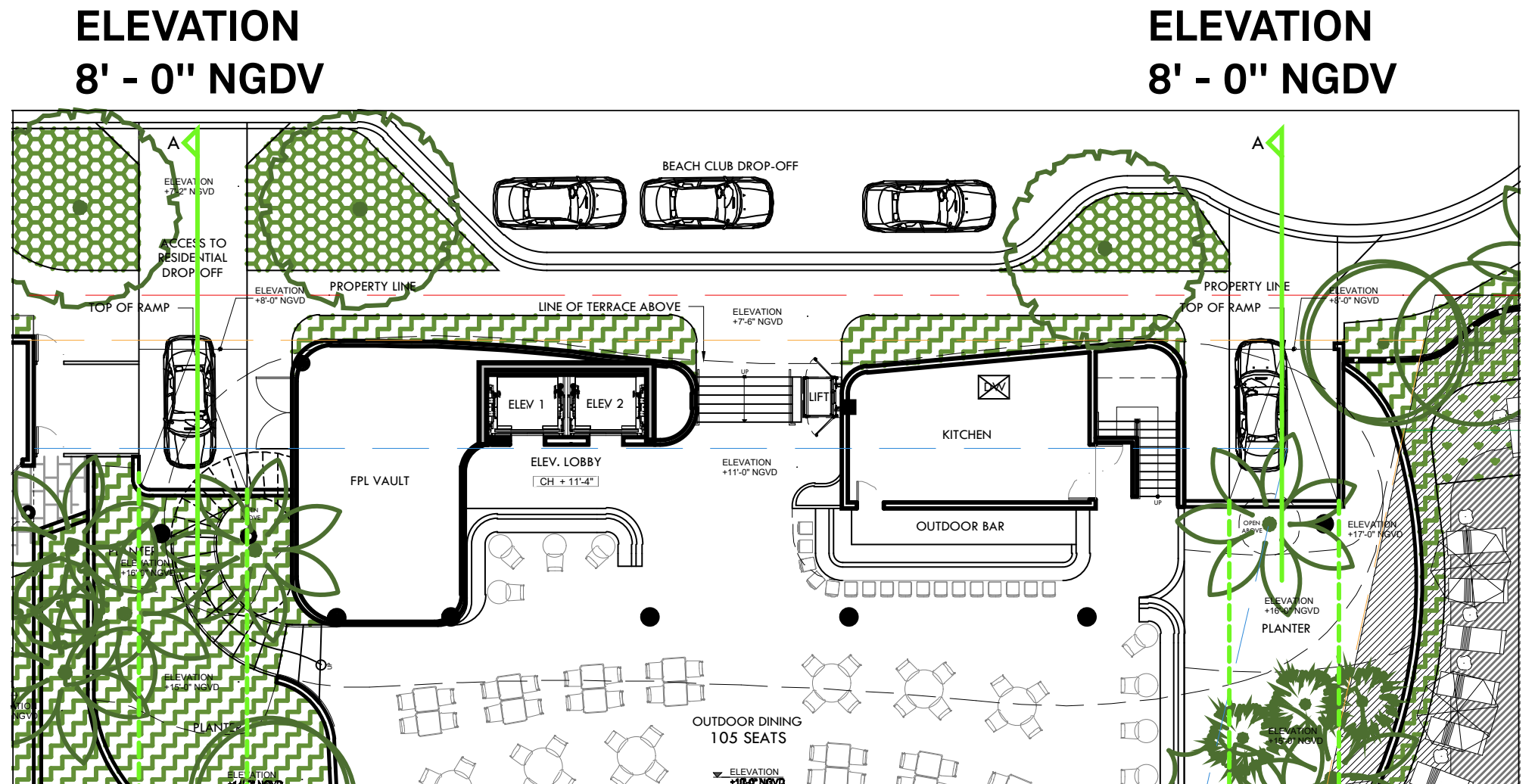
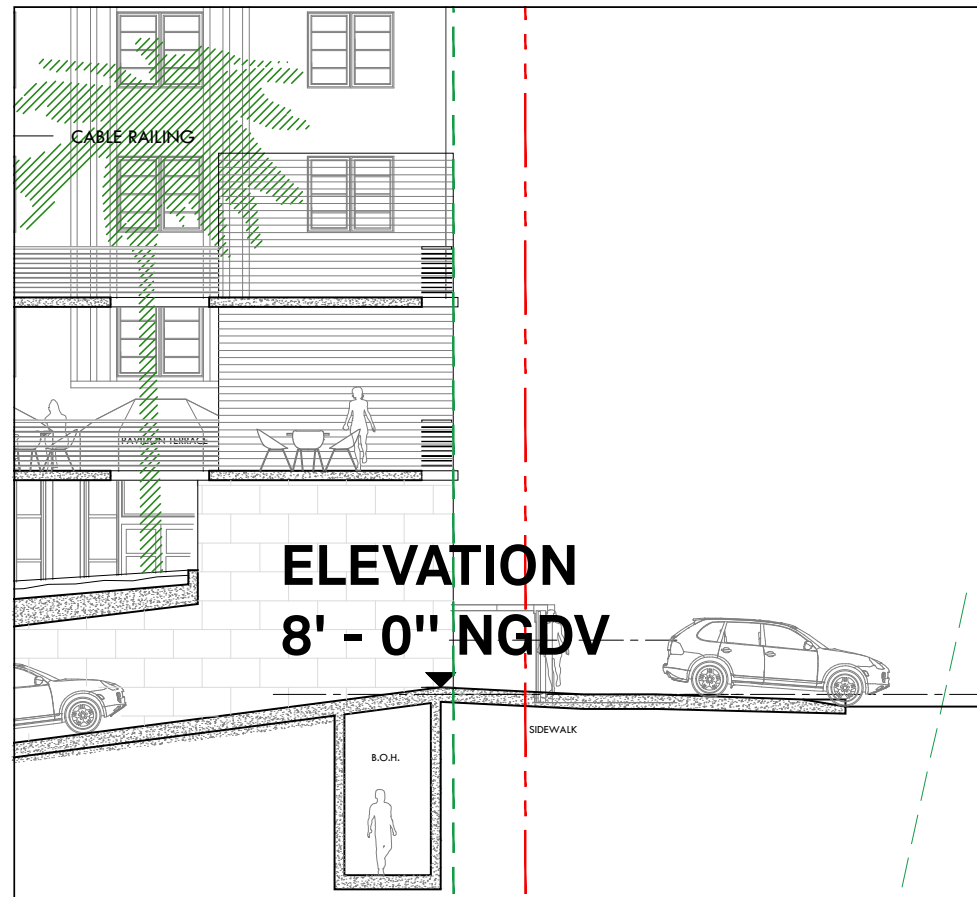






- PREVIOUSLY APPROVED & EXISTING BASEMENT AREA
- PROPOSED BASEMENT AREA













R

The RALEIGH

RALEIGH