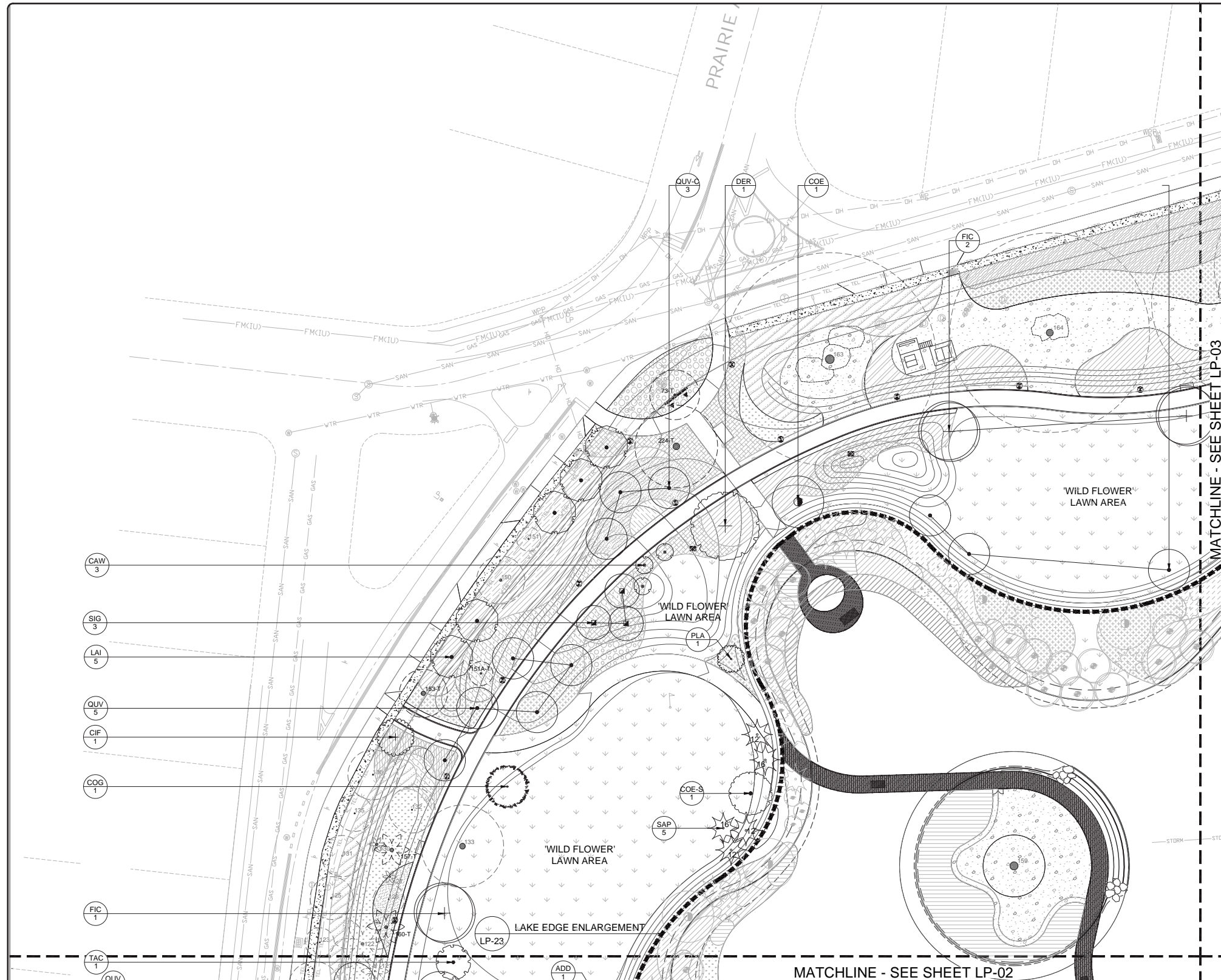


TECHNICAL DRAWINGS (PLANTING SCHEDULE)

BAYSHORE PARK - PLANTING SCHEDULE 90% CD										
TREES	Quantity	Botanical/Common	Cont	DBH	Height	Spread	Remarks	Native	Salt Tolerance	Wildlife
ACF	1	Acacia farnesiana / Sweet Acacia	B & B	2"	8' - 10' Ht.	5'-6' Spr.		N	Medium	B,C
ADD	1	Adansonia digitata / Baobab	Collected		20'-22' Ht.	15'-16' Spr.	Specimen		Medium	
ANO	1	Anacardium occidentale / Cashew Nut Tree	B & B	3"	10'-12' Ht.	8'-9' Spr.				BE
ANG	12	Annona glabra / Pond Apple	B & B	1.5"	7'-8' Ht.	5'-6' Spr.		N	High	B
BAV	1	Bauhinia variegata / Orchid Tree	25 Gal.	2.5"	7'-8' Ht.	5'-6' Spr.			Medium	B
BOC-S	1	Bombax ceiba / Kapok Tree	Collected		20'-22' Ht.	15'-16' Spr.	Specimen		High	
BLA	30	Bulnesia arborea / Verawood	B & B	3"	12'-14' Ht.	7'-8' Spr.			Medium	
BUS	17	Bursera simaruba / Gumbo Limbo	B & B	4"	14'-16' Ht.	10'-12' Spr.	Full branching, Fl. Fancy	N	Medium	B,C
BUS-1	10	Bursera simaruba / Gumbo Limbo	B & B	6"	18'-20' Ht.	12'-14' Spr.	Full branching, Fl. Fancy	N	Medium	B,C
CAB	3	Cassia bakeriana / Pink Shower Tree	B & B	1.5"	7'-8' Ht.	5'-6' Spr.				
CAF	1	Cassia fistula / Golden Shower Tree	B & B	3"	12'-14' Ht.	7'-8' Spr.				
CAH	1	Calliandra haematocephala / Powderpuff Tree	15 Gal.	2"	7'-8' Ht.	5'-6' Spr.			Low	C
CAO	1	Cananga odorata / Ylang-Ylang	25 Gal.	2"	8' - 10' Ht.	5'-6' Spr.			Medium	
CAP	1	Caesalpinia pulcherrima / Dwarf Poinciana	15 Gal.	2"	7'-8' Ht.	5'-6' Spr.			Medium	
CAW	3	Canella winterana / Wild Cinnamon Bark	25 Gal.	1.5"	6' - 7' Ht.	4'-5' Spr.		N	Medium	B,BF
CAS	1	Cassia surattensis / Cassia	B & B	1.5"	7'-8' Ht.	5'-6' Spr.	Multi trunk with Character	N	Medium	
CHO	1	Chrysothamnus oliviforme / Satin Leaf	B&B	2.5"	12'-14' Ht.	6'-7' Spr.	Single Leader, 2' C.T.	N	High	B
CHS	1	Chorisia speciosa / Silk Floss Tree	Collected		20'-22' Ht.	15'-16' Spr.	Specimen		Medium	
CIF	2	Citharexylum spinosum / Fiddlewood	25 Gal.	2.5"	7'-8' Ht.	4'-5' Spr.	Single Leader		High	B,BF,C
COD	1	Coccoloba diversifolia / Pigeon Plum	B & B	3"	10'-12' Ht.	6'-7' Spr.		N	High	B
COE-S	10	Conocarpus erectus 'sericeus' / Silver Buttonwood	B & B	2.5"	10'-12' Ht.	8'-9' Spr.	Multi trunk with Character	N	High	BF,C
COE	11	Conocarpus erectus / Green Buttonwood	B & B	4"	14'-16' Ht.	10'-12' Spr.	Multi trunk	N	High	BF,C
COE-C	2	Conocarpus erectus / Green Buttonwood	B & B	4"	18'-20' Ht.	10'-12' Spr.	Collected Specimen	N	High	BF,C
COG	1	Couropita guianensis / Cannon Ball Tree	B & B	3"	12'-14' Ht.	7'-8' Spr.			Low	B,BF,BE
COS	2	Cordia sebestena / Orange Geiger Tree	B & B	2.5"	10'-12' Ht.	6'-7' Spr.	Heavy branching, Character	N	Medium	B,BF
COU	1	Coccoloba uvifera / Sea Grape	B & B	3"	12'-14' Ht.	8'-9' Spr.	Tree form, Multi-Branching	N	High	B,BF
DEP	2	Delonix poinciana / Royal Poinciana	B & B	4"	16'-18' Ht.	10'-12' Spr.			High	
ELR	3	Eugenia rhombosa / Red Stopper	25 Gal.	2"	8' - 10' Ht.	5'-6' Spr.		N	Medium	B
FIG	4	Ficus citrifolia / Shortleaf Fig	B&B	3.5"	12'-14' Ht.	7'-8' Spr.	No root girdling, 3' C.T.	N	Medium	B,C
GLD	2	Guajira discolor / Biolly	45 Gal.	2"	10'-12' Ht.	7'-8' Spr.	Single leader,	N	High	
GIS	5	Guaiacum sanctum / Lignum vitae	B & B	2.5"	10'-12' Ht.	7'-8' Spr.		N	High	B,C
ILC	5	Ilex cassine / Dahoon Holly	25 Gal.	2"	7'-8' Ht.	4'-5' Spr.		N	Low/None	B,BF,BE,C
KIP	1	Kigelia pinnata / Sausage Tree	B&B	3.5"	12'-14' Ht.	7'-8' Spr.	4' C.T. - Specimen		Medium	
KRF	1	Krugiodendron ferreum / Black Ironwood	B & B	2"	10'-12' Ht.	7'-8' Spr.	Single Leader, 2' C.T.	N	High	B
LAR	9	Laguncularia racemosa / White Mangrove	7 Gal.		3' - 4' Ht.	2'-3' Spr.			High	BE
LAI	9	Lagerstroemia indica / Crape Myrtle	B & B	3"	12'-14' Ht.	7'-8' Spr.	Multi-trunk, Full		Low	B,BE
LVL	31	Lysiloma latifolia / Wild Tamarind	B & B	3.5"	14'-16' Ht.	9'-10' Spr.		N	Medium	B,BF,C
LVS	3	Lysiloma sabicu / Cuban Tamarind	B & B	3"	12'-14' Ht.	7'-8' Spr.		N	High	B,BF,C
MAF	1	Mastichodendron foetidissimum / False Mastich	45 Gal.	2"	10'-12' Ht.	7'-8' Spr.		N	Medium	B,BE
MYF	4	Myrcianthes fragrans / Simpson's Stopper	15 Gal.	2"	7'-8' Ht.	5'-6' Spr.	Multi-trunk	N	Medium	B,BF,BE,C
PAU		Pandanus utilis / Screw pine	B&B		18'-20' Ht.				Medium	
PBB	1	Persea borbonia / Red Bay	B & B	2"	10'-12' Ht.	7'-8' Spr.		N	High	B,BF,C
PID	1	Pimenta dioica / Allspice Tree	25 Gal.	1.5"	8'-10' Ht.	5'-6' Spr.	Single leader		Medium	
PIP	1	Piscidia piscipula / Jamaican Dogwood	B & B	3"	12'-14' Ht.	8'-9' Spr.		N	High	C
PLA	1	Plumeria acuminata / Frangipani	B&B	2"	8'-10' Ht.	7'-8' Spr.	White and Yellow Flowers		Medium	
PRC	1	Prunus caroliniana / Cherry Laurel	15 Gal.		5'-6' Ht.			N	Medium	B,BE,BF
PSE	1	Pseudobombax ellipticum / Shaving Brush Tree	B&B	3"	12'-14' Ht.	6'-7' Spr.	Single Leader, Specimen		Medium	
QUV	14	Quercus virginiana / Southern Live Oak	B & B	6"	18'-20' Ht.	12'-14' Spr.	Single Leader	N	Medium	B,BF,BE,C
QUV-C	27	Quercus virginiana / Southern Live Oak	B & B	6"	18'-20' Ht.	12'-14' Spr.	w/ Character	N	Medium	B,BF,BE,C
SAS	1	Samanea saman / Rain Tree	B&B	3"	12'-14' Ht.	6'-7' Spr.	Single Leader		Medium	
SEP	1	Senna polyphylla / Desert Cassia	25 Gal.	2.5"	8' - 10' Ht.	5'-6' Spr.	Single Leader		High/None	B,BE,BF,C
SID	1	Sideroxylon salicifolium / Bustin Willow	25 Gal.	2.5"	10'-12' Ht.	6'-7' Spr.	Single Leader	N	High	B
SIG	4	Simarouba glauca / Paradise Tree	45 Gal.	3"	12'-14' Ht.	7'-8' Spr.		N	High	B
SPC	1	Spathodea campanulata / African Tulip Tree	B & B	3"	10'-12' Ht.	7'-8' Spr.		N	Medium	B,BE,BF
SUM	1	Suriana maritima / Bay Cedar	25 Gal.	2"	6' - 7' Ht.	3'-4' Spr.		N	High	BF,C
SWM	5	Swietenia mahagoni / West Indian Mahogany	B & B	4"	14'-16' Ht.	9'-10' Spr.	Fl. Fancy	N	Medium	BF,BE
TAC	2	Tabebuia cariba / Yellow Trumpet Tree	B&B	2"	10'-12' Ht.	7'-8' Spr.		N	Medium	
TAD	34	Taxodium distichum / Bald Cypress	45 Gal.	2.5"	10'-12' Ht.	6'-7' Spr.	Heavy branching	N	Medium	B,C
TES	1	Tecoma stans / Yellow Elder	25 Gal.	2"	8' - 10' Ht.	5'-6' Spr.	Single Leader		High	B,BE
Total	292									
Legend: B - Birds, BE - Bees, BF - Butterfly, C - Caterpillar, N - Native										
PALMS	Quantity	Botanical/Common	Cont	Cal	Size	Spr	Remarks	Native	Salt Tolerance	Wildlife
CON	21	Cocos nucifera 'Green Malayan' / Coconut Palm	B & B		(24")x5 (28")x10 (32")x6		30% Heavy Curve Trunks		High	
DIA	9	Dictyosperma album / Hurricane Palm	B & B		14'-16' OA				High	
PTE	7	Ptychosperma elegans / Solitaire Palm	B&B		10'-12' OA Ht.		Triple Trunk		Low-None	B
SAP	126	Sabal palmetto / Cabbage Palmetto	B & B		G.W. - (8")x6 (12")x38 (16")x50 (20")x26 (24")x6		Booted 50%, Hurricane cut, 30% heavy curve	N	High	B,BE,C
THR	8	Thrinax radiata / Florida Thatch Palm	B & B		10'-12' OA Ht.		6'-7' GW	N	High	B,BE,C
Total	171									
Legend: B - Birds, BE - Bees, BF - Butterfly, C - Caterpillar, N - Native										
LITTORAL ZONE	Quantity	Botanical/Common	Cont.	Size	Spacing	Remarks	Native	Salt Tolerance	Wildlife	
ACD	729	Acrostichum danaeifolium / Leather Fern	3 Gal.	12"-18" OA Ht.	36" o.c.		N	Medium	B	
BOA	1,004	Borreria arborescens / Sea Oxeye Daisy	3 Gal.	12" HT.	24" o.c.		N	High	B, BF	
CRA	168	Crinum americanum / Swamp Lily	3 Gal.	12"-15" OA	30" o.c.		N	Medium	BF, C	
ELC	738	Eleocharis cellulosa / Gulf Coast Spikerush	3 Gal.	18"-24" OA	30" o.c.		N	Medium	B	
JUE	1,382	Juncus effusus / Soft Rush	3 Gal.	24"-30" OA	30" o.c.		N	Medium	B	
MUC	389	Muhlenbergia capillaris / Hairy Muhly Grass, Pink	3 Gal.	18"-24" OA	30" o.c.		N	Medium	B, BE	
NEE	485	Nephrolepis exaltata / Boston Fern	3 Gal.	12"-18" OA	30" o.c.		N	Low/None		
SOT	317	Sophora tomentosa / Necklace Pod	3 Gal.	24"-30" OA Ht.	30" o.c.		N	High	B, BE, BF, C	
SPA	435	Spartina alternifolia / Smooth Cord Grass	3 Gal.	18"-24" HT.	36" o.c.		N	High	B,C	
SPB	393	Spartina bakeri / Sand Cord Grass	3 Gal.	18"-24" HT.	36" o.c.		N	High	C	
TRD	57	Tripsacum dactyloides / Fakahatchee Grass	3 Gal.	18"-24" OA	36" o.c.		N	High	C	
TRF	205	Tripsacum floridanum / Dwarf Fakahatchee Grass	3 Gal.	18"-24" OA	30" o.c.		N	Medium	B,C	
Total	5573									
Legend: B - Birds, BE - Bees, BF - Butterfly, C - Caterpillar, N - Native										
SHRUBS	Quantity	Botanical/Common	Cont.	Size	Spacing	Remarks	Native	Salt Tolerance	Wildlife	
AID		Alocasia odora / Elephant Ear 'California'	3 Gal.							
ARE	2	Ardia escaillonoides / Marlberry	25 Gal.	6'-7' HT. x 4'-5' SP.		Full, Tree Form	N	Medium	B	
BGG	434	Bougainvillea 'Dwarf' / Bougainvillea 'Ms Alice'	3 Gal.	12"-18" OA	18" o.c.	Thornless Variety				
CAA	3	Calliopsis americana / American Beautyberry	3 Gal.	18"-24" HT.			N	Low/None	B, BF	
CAC	445	Capparis cynophallophora / Jamaica Caper	3 Gal.	24"-30" HT.	42" o.c.	Full	N	Medium	B, BE, BF, C	
CEN		Cestrum nocturnum / Night Blooming Jasmine	3 Gal.	12"-18" OA Ht.	24" o.c.	Full				
CHI	1,457	Chrysobalanus icaco / Redtip cocoplum	7 gal.	18"-24" HT.	30" o.c.	Full	N	Medium	B, BF	
COT	98	Cordyline terminalis / Red Ti Plant	7 gal.	18"-24" OA Ht.	30" o.c.	Full				
GAG	46	Galphimia gracilis / Thyralis	3 Gal.	24"-30" OA Ht.	24" o.c.	Full				
HAP	167	Hamelia patens / Firebush	3 Gal.	24"-30" OA	36" o.c.		N	Low/None	B, BE, BF, C	
HEG	5	Heliotropium gnaphalodes / Sea Lavender	3 Gal.	18"-24" OA Ht.			N			
HDS	2	Holmskioldia sanguinea / Chinese Hat Plant	3 Gal.	18"-24" HT.	30" o.c.			Medium		
JAI	1	Jatropha integrifolia / Jatropha	15 Gal.	6'-7' HT.		Multi-Branch		Low/None	B, BE, BF	

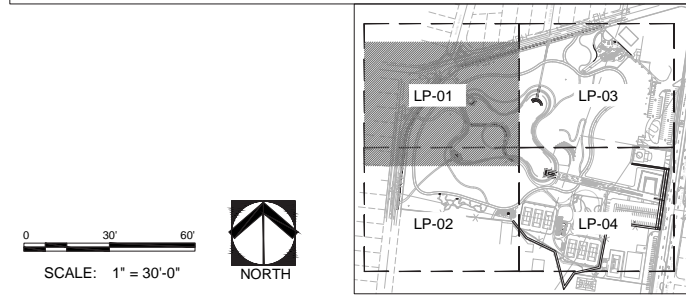
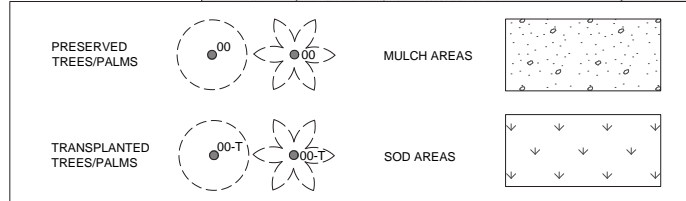
GROUNDCOVERS	Quantity	Botanical/Common	Cont.	Size	Spacing	Remarks	Native	Salt Tolerance	Wildlife
ARG	778	Arachis glabrata / Perennial Peanut	3 Gal.	9"-12" OA	18" o.c.		N	Medium	
ASC	67	Asclepias curassavica / Blood Flower	3 Gal.	12"-18" HT	18" o.c.		N	Low/None	B, BE, BF, C
AST	24	Asclepias tuberosa / Butterfly Milkweed	3 Gal.	12"-18" HT	30" o.c.		N	Low/None	B, BE, BF, C
CHH	1,117	Chrysobalanus icaco 'horizontalis' / Horizontal Cocoplum	3 Gal.	12"-18" OA	24" o.c.		N	Medium	B, BF
DIV	288	Dietes vegeta / White African Iris	3 Gal.	12"-18" HT	24" o.c.		N	Low/None	BF
FLL	367	Flaveria linearis / Narrowleaf Yellowtops	3 Gal.	12"-18" HT	18" o.c.		N	High	B, BE, BF
ERL	419	Eriodora littoralis / Golden Creeper	3 Gal.	12"-18" OA Ht.	24" o.c.		N	High	B, BE, BF, C
GAP	1,305	Gallardia pulchella / Indian Blanket Flower	3 Gal.	9"-12" OA	18" o.c.		N	High	B, BF
HAN	2,895	Hamelia nodosa / Dwarf Firebush	3 Gal.	18"-24" OA	24" o.c.		N	Low/None	B, BE, BF, C
HED	1,422	Helianthus debilis / Beach Sunflower	3 Gal.	12"-18" HT	18" o.c.		N	High	BE, BF
IPC	180	Ipomoea pes-caprae / Railroad Vine	3 Gal.	12"-18" OA Ht.	18" o.c.		N	High	BF
LAD	1,085	Lantana depressa / Gold Lantana	3 Gal.	12"-18" HT	15" o.c.		N	High	BF, C
NEE	3,582	Nephrolepis exaltata / Boston Fern	3 Gal.	12"-18" OA	30" o.c.		N	Low/None	
PEL	177	Pentas lanceolata / Star Flower 'Dwarf'	3 Gal.	18"-24" OA	30" o.c.		N	High	B, BE, BF
PEO	414	Peperomia obtusifolia / Green Peperomia	3 Gal.	8"-12" OA Full	18" o.c.		N	Low/None	
PSL	1,569	Psychotria ligustrifolia / Bahama Coffee	3 Gal.	12"-18" OA	24" o.c.		N	Low/None	B, BF
PTS	1,628	Phymatosorus scolopendria / Wart Fern	3 Gal.	12"-18" OA	30" o.c.		N	None	
RUC	188	Ruellia carolinensis / Carolina Wild Petunia	3 Gal.	12"-18" HT	18" o.c.		N	High	B, BF
SAS	33	Salvia spp. / Blue Salvia	3 Gal.	9"-12" OA	18" o.c.			Low	B, BE, BF
SAS2	80	Salvia spp. / Red Salvia	3 Gal.	9"-12" OA	18" o.c.			Low	B, BE, BF
TRF	2,275	Tripsacum floridanum / Dwarf Fakahatchee Grass	3 Gal.	18"-24" OA	30" o.c.		N	Medium	B, C
ZAF	116	Zamia floridana / Coontie Palm	7 Gal.	18"-24" OA	30" o.c.		N	Medium	C
ZAP	1,695	Zamia pumila / Co							

TECHNICAL DRAWINGS (CANOPY PLANTING PLAN 1)



TREES	Botanical/Common	Native
ACF	Acacia farnesiana / Sweet Acacia	N
ADD	Adansonia digitata / Baobab	N
ANO	Anacardium occidentale / Cashew Nut Tree	N
ANG	Annona glabra / Pond Apple	N
BAV	Bauhinia variegata / Orchid Tree	N
BOC-S	Bombax ceiba / Kapok Tree	N
BUA	Bulnesia arborea / Verawood	N
BUS	Bursera simaruba / Gumbo Limbo	N
CAB	Cassia bakeriana / Pink Shower Tree	N
CAF	Cassia fistula / Golden Shower Tree	N
CAH	Calliandra haematocephala / Powderpuff Tree	N
CAO	Cananga odorata / Ylang-Ylang	N
CAP	Caesalpinia pulcherrima / Dwarf Poinciana	N
CAW	Canella winterana / Wild Cinnamon Bark	N
CAS	Cassia surattensis / Cassia	N
CHO	Chrysophyllum oliviforme / Satin Leaf	N
CHS	Chorisia speciosa / Silk Floss Tree	N
CIF	Citharexylum spinosum / Fiddlewood	N
COD	Coccoloba diversifolia / Pigeon Plum	N
COE-S	Conocarpus erectus 'sericeus' / Silver Buttonwood	N
COE	Conocarpus erectus / Green Buttonwood	N
COG	Couroupita guianensis / Cannon Ball Tree	N
COS	Cordia sebestena / Orange Geiger Tree	N
COU	Coccoloba uvifera / Sea Grape	N
DER	Delonix poinciana / Royal Poinciana	N
EUR	Eugenia rhombea / Red Stopper	N
FIC	Ficus citrifolia / Shortleaf Fig	N
GUD	Guapira discolor / Blolly	N
GUS	Guaicum sanctum / Lignum vitae	N
ILC	Ilex cassine / Dahoon Holly	N
KIP	Kigelia pinnata / Sausage Tree	N
KRF	Krugiodendron ferreum / Black Ironwood	N
LAR	Laguncularia racemosa / White Mangrove	N
LAI	Lagerstroemia indica / Crape Myrtle	N
LVL	Lysiloma latiliqua / Wild Tamarind	N
LYS	Lysiloma sabicu / Cuban Tamarind	N
MAF	Mastichodendron foetidissimum / False Mastic	N
MYF	Myrcianthes fragrans / Simpson's Stopper	N
PEB	Persea borbonia / Red Bay	N
PID	Pimenta dioica / Allspice Tree	N
PIP	Piscidia piscipula / Jamaican Dogwood	N
PLA	Plumeria acuminata / Frangipani	N
PRC	Prunus caroliniana / Cherry Laurel	N
PSE	Pseudobombax ellipticum / Shaving Brush Tree	N
QUV	Quercus virginiana / Southern Live Oak	N
SAS	Samanea saman / Rain Tree	N
SEP	Senna polyphylla / Desert Cassia	N
SID	Sideroxylon salicifolium / Bustic Willow	N
SIG	Simarouba glauca / Paradise Tree	N
SPC	Spathodea campanulata / African Tulip Tree	N
SUM	Suriana maritima / Bay Cedar	N
SWM	Swietenia mahagoni / West Indian Mahogany	N
TAC	Tabebuia caraiba / Yellow Trumpet Tree	N
TAD	Taxodium distichum / Bald Cypress	N
TES	Tecoma stans / Yellow Elder	N
TREES	Botanical/Common	Native
CON	Cocos nucifera 'Green Malayan' / Coconut Palm	N
DIA	Dictyosperma album / Hurricane Palm	N
PTE	Ptychosperma elegans / Solitaire Palm	N
SAP	Sabal palmetto / Cabbage Palmetto	N
THR	Thrinax radiata / Florida Thatch Palm	N

FOR FULL PLANTING SCHEDULE, SEE SHEET LP-00



MIAMIBEACH
CAPITAL IMPROVEMENT PROJECTS OFFICE
1701 MERIDIAN AVENUE, MIAMI BEACH, FL 33139

PROJECT: BAYSHORE PARK (FORMER PAR 3)
TITLE: TREES AND PALMS PLANTING PLAN

savinomiller
DESIGN STUDIO

CITY MANAGER: JIMMY L. MORALES
CIP DIRECTOR: DAVID MARTINEZ, P.E.
PROJECT MANAGER: MINA SAMADI, P.E.

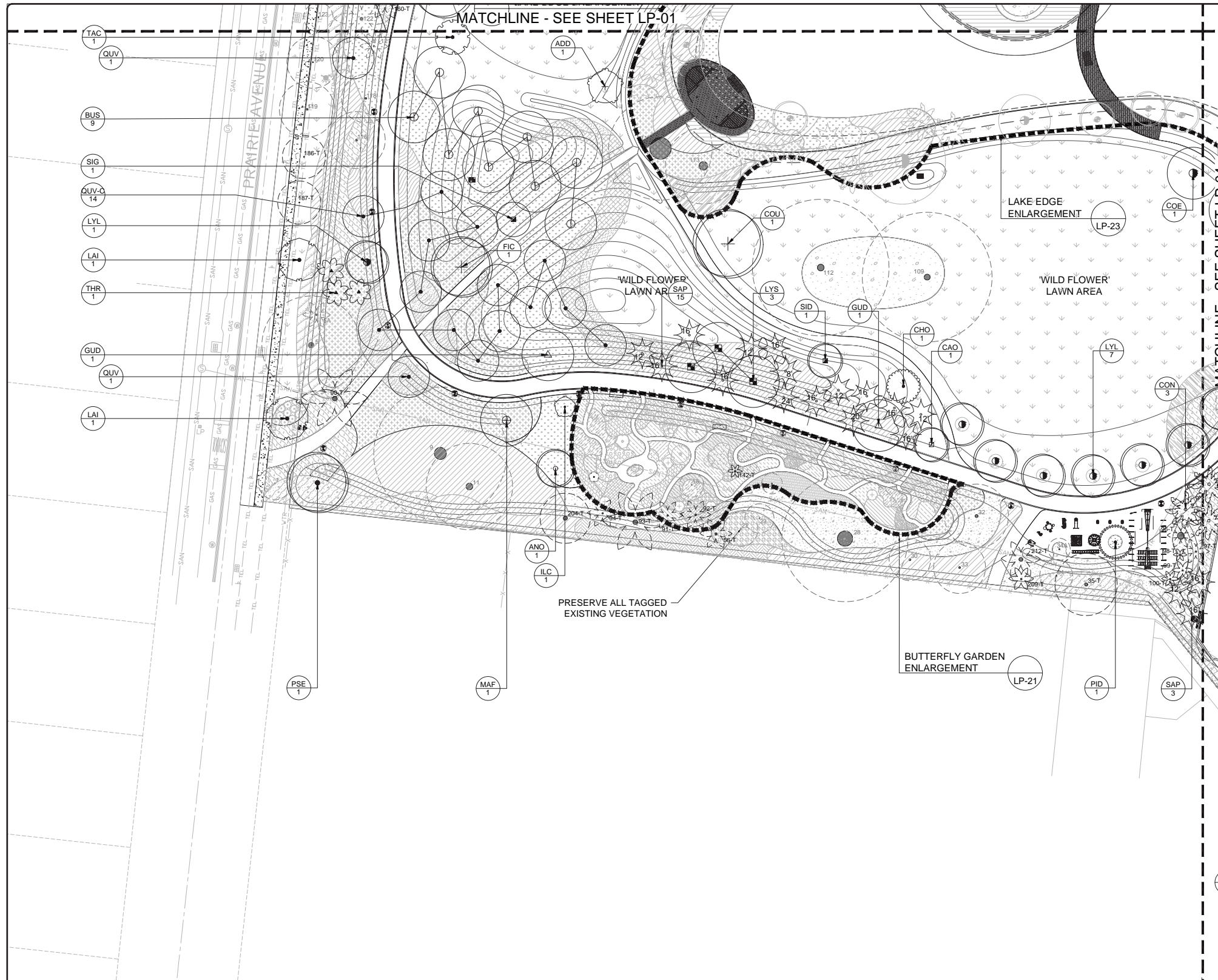
LA OF RECORD: BM
DESIGN LA: BM
DRAWN BY: SMDS
CHECKER: BM
SCALE: 1" = 30'-0"

LANDSCAPE ARCHITECT OF RECORD:
BARRY MILLER, RLA
NO 866

5	NOT FOR CONSTRUCTION	
4		
3	07-02-20 90% DESIGN PROGRESS SUBMITTAL	
2	06-17-19 90% DESIGN PROGRESS DRAFT	
1	07-20-18 60% DESIGN PROGRESS SUBMITTAL	
NO.	DATE	REVISION

File Name: PLANTING PLAN SHEETS.dwg
Survey Reference:
Field Book: N/A Page: N/A Work Order: 201529234
Date: Sheet: Drawing: LP-01

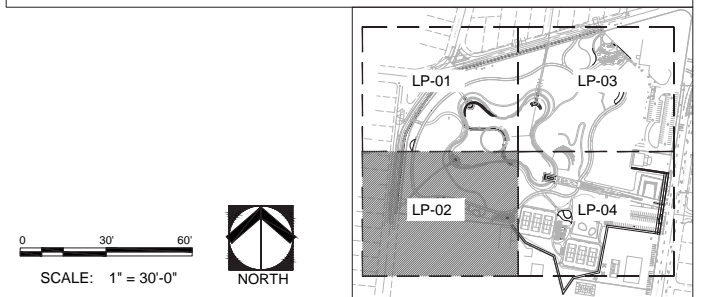
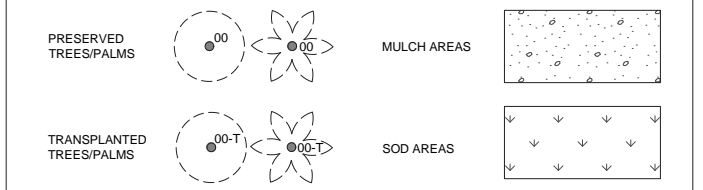
TECHNICAL DRAWINGS (CANOPY PLANTING PLAN 2)



BAYSHORE PARK - PLANTING LEGEND

TREES	Botanical/Common	Native
ACF	Acacia farnesiana / Sweet Acacia	N
ADD	Adansonia digitata / Baobab	
ANO	Anacardium occidentale / Cashew Nut Tree	
ANG	Annona glabra / Pond Apple	N
BAV	Bauhinia variegata / Orchid Tree	
BOC-S	Bombax ceiba / Kapok Tree	
BUA	Bulnesia arborea / Verawood	
BUS	Bursera simaruba / Gumbo Limbo	N
CAB	Cassia bakeriana / Pink Shower Tree	
CAF	Cassia fistula / Golden Shower Tree	
CAH	Calliandra haematocephala / Powderpuff Tree	
CAO	Cananga odorata / Ylang-Ylang	
CAP	Caesalpinia pulcherrima / Dwarf Poinciana	
CAW	Canella winterana / Wild Cinnamon Bark	N
CAS	Cassia surattensis / Cassia	
CHO	Chrysophyllum oliviforme / Satin Leaf	N
CHS	Chorisia speciosa / Silk Floss Tree	
CIF	Citharexylum spinosum / Fiddlewood	
COD	Coccoloba diversifolia / Pigeon Plum	N
COE-S	Conocarpus erectus 'sericeus' / Silver Buttonwood	N
COE	Conocarpus erectus / Green Buttonwood	N
COG	Couroupita guianensis / Cannon Ball Tree	
COS	Cordia sebestena / Orange Geiger Tree	N
COU	Coccoloba uvifera / Sea Grape	N
DER	Delonix poinciana / Royal Poinciana	
EUR	Eugenia rhombea / Red Stopper	N
FIC	Ficus citrifolia / Shortleaf Fig	N
GUD	Guapira discolor / Bolly	N
GUS	Guaiacum sanctum / Lignum vitae	N
ILC	Ilex cassine / Dahoon Holly	N
KIP	Kigelia pinnata / Sausage Tree	
KRF	Krugiodendron ferreum / Black Ironwood	N
LAR	Laguncularia racemosa / White Mangrove	N
LAI	Lagerstroemia indica / Grape Myrtle	
LYL	Lysiloma latisiliqua / Wild Tamarind	N
LYS	Lysiloma sabicu / Cuban Tamarind	N
MAF	Mastichodendron foetidissimum / False Mastic	N
MYF	Myrcianthes fragrans / Simpson's Stopper	N
PEB	Persea borbonia / Red Bay	N
PID	Pimenta dioica / Allspice Tree	
PIP	Piscidia piscipula / Jamaican Dogwood	N
PLA	Plumeria acuminata / Frangipani	
PRC	Prunus caroliniana / Cherry Laurel	N
PSE	Pseudobombax ellipticum / Shaving Brush Tree	
QUV	Quercus virginiana / Southern Live Oak	N
SAS	Samanea saman / Rain Tree	
SEP	Senna polyphylla / Desert Cassia	
SID	Sideroxylon salicifolium / Bustin Willow	N
SIG	Simarouba glauca / Paradise Tree	N
SPC	Spathodea campanulata / African Tulip Tree	
SUM	Suriana maritima / Bay Cedar	N
SWM	Swietenia mahagoni / West Indian Mahogany	N
TAC	Tabebuia caraiba / Yellow Trumpet Tree	
TAD	Taxodium distichum / Bald Cypress	N
TES	Tecoma stans / Yellow Elder	
TREES	Botanical/Common	Native
CON	Cocos nucifera 'Green Malayan' / Coconut Palm	
DIA	Dictyosperma album / Hurricane Palm	
PTE	Ptychosperma elegans / Solitaire Palm	
SAP	Sabal palmetto / Cabbage Palmetto	N
THR	Thrinax radiata / Florida Thatch Palm	N

*FOR FULL PLANTING SCHEDULE, SEE SHEET LP-00



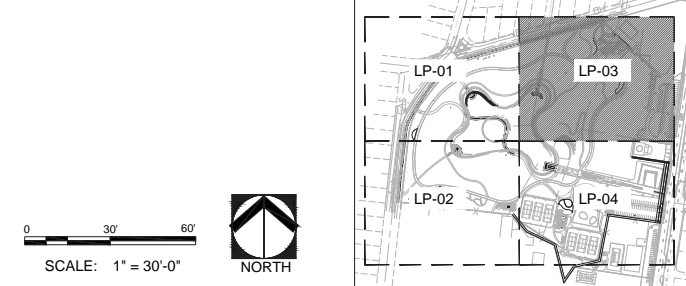
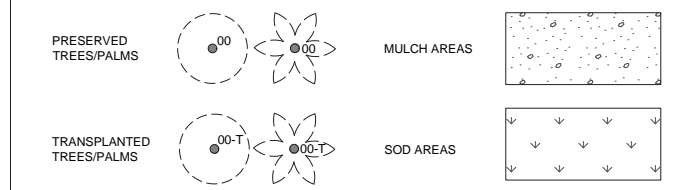
<p>MIAMIBEACH CAPITAL IMPROVEMENT PROJECTS OFFICE 1701 MERIDIAN AVENUE, MIAMI BEACH, FL 33139</p>	PROJECT: BAYSHORE PARK (FORMER PAR 3) TITLE: TREES AND PALMS PLANTING PLAN	<p>savinomiller LANDSCAPE ARCHITECTURE DESIGN DESIGN ARCHITECTURE DESIGN ARCHITECTURE ARCHITECTURE ARCHITECTURE</p>	CITY MANAGER: JIMMY L. MORALES CIP DIRECTOR: DAVID MARTINEZ, P.E. PROJECT MANAGER: MINA SAMADI, P.E.	LA OF RECORD: BM DESIGN LA: BM DRAWN BY: SMDS CHECKER: BM SCALE: 1" = 30'-0"	LANDSCAPE ARCHITECT OF RECORD: BARRY MILLER, RLA NO. 866	5 4 3 2 1	NOT FOR CONSTRUCTION 07-02-20 90% DESIGN PROGRESS SUBMITTAL 06-17-19 90% DESIGN PROGRESS DRAFT 07-20-18 60% DESIGN PROGRESS SUBMITTAL	File Name: PLANTING PLAN SHEETS.dwg Survey Reference: Field Book: N/A Page: N/A Work Order: 201529234 Date: Sheet: Drawing: LP-02
	NO. DATE REVISION APPD. BY							

TECHNICAL DRAWINGS (CANOPY PLANTING PLAN 3)



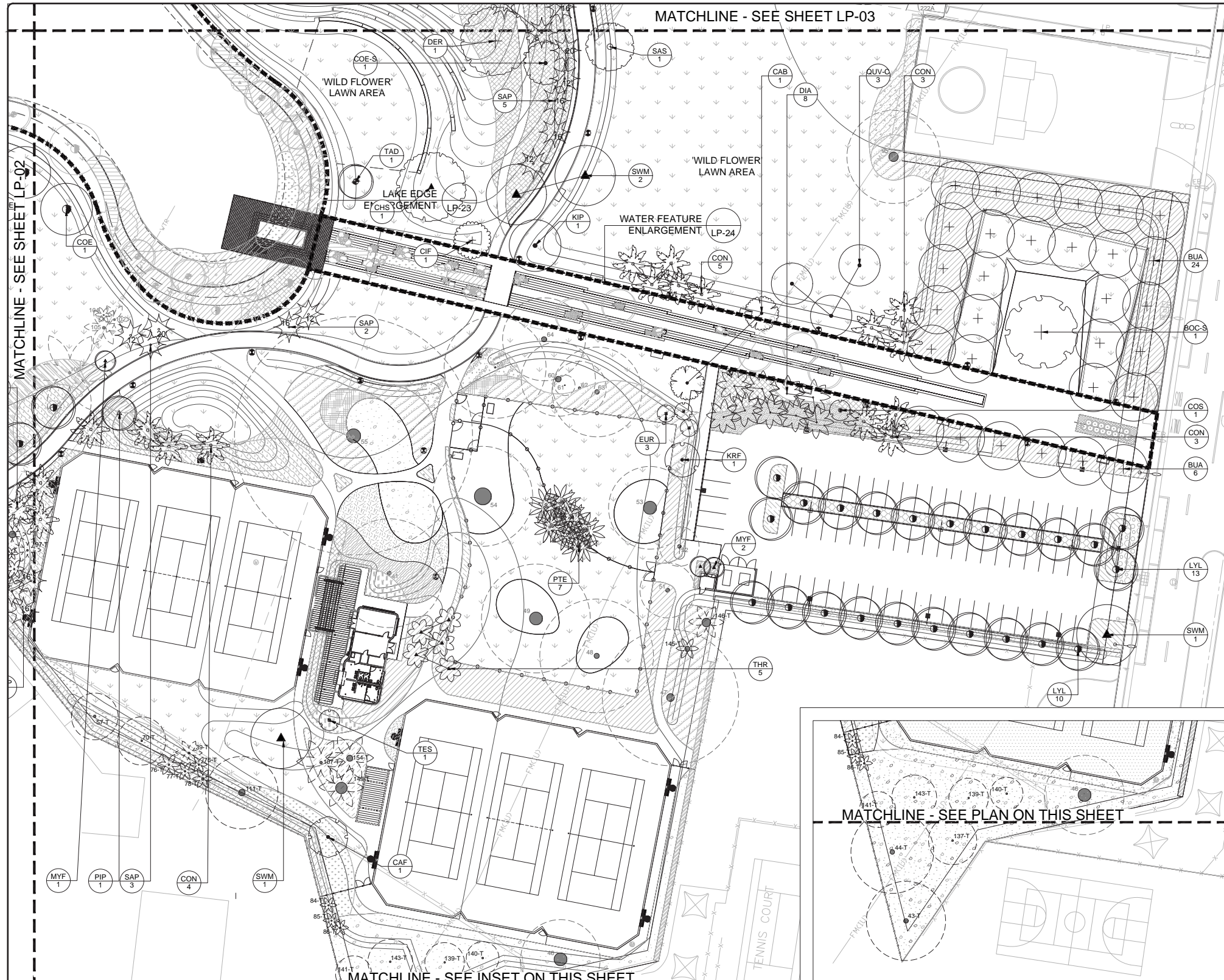
TREES	Botanical/Common	Native
ACF	Acacia farnesiana / Sweet Acacia	N
ADD	Adansonia digitata / Baobab	
ANO	Anacardium occidentale / Cashew Nut Tree	
ANG	Annona glabra / Pond Apple	N
BAV	Bauhinia variegata / Orchid Tree	
BOC-S	Bombax ceiba / Kapok Tree	
BUA	Bulnesia arborea / Verawood	
BUS	Bursera simaruba / Gumbo Limbo	N
CAB	Cassia bakeriana / Pink Shower Tree	
CAF	Cassia fistula / Golden Shower Tree	
CAH	Calliandra haematocephala / Powderpuff Tree	
CAO	Cananga odorata / Ylang-Ylang	
CAP	Caesalpinia pulcherrima / Dwarf Poinciana	
CAW	Canella winterana / Wild Cinnamon Bark	N
CAS	Cassia surattensis / Cassia	
CHO	Chrysophyllum oliviforme / Satin Leaf	N
CHS	Chorisia speciosa / Silk Floss Tree	
CIF	Citharexylum spinosum / Fiddlewood	
COD	Coccoloba diversifolia / Pigeon Plum	N
COE-S	Conocarpus erectus 'sericeus' / Silver Buttonwood	N
COE	Conocarpus erectus / Green Buttonwood	N
COG	Couroupita guianensis / Cannon Ball Tree	N
COS	Cordia sebestena / Orange Geiger Tree	N
COU	Coccoloba uvifera / Sea Grape	N
DER	Delonix poinciana / Royal Poinciana	
EUR	Eugenia rhombea / Red Stopper	N
FIC	Ficus citrifolia / Shortleaf Fig	N
GUD	Guapira discolor / Blolly	N
GUS	Guaiacum sanctum / Lignum vitae	N
ILC	Ilex cassine / Dahoon Holly	N
KIP	Kigelia pinnata / Sausage Tree	
KRF	Krugiodendron ferreum / Black Ironwood	N
LAR	Laguncularia racemosa / White Mangrove	N
LAI	Lagerstroemia indica / Cape Myrtle	
LYL	Lysiloma latisiliqua / Wild Tamarind	N
LYS	Lysiloma sabicu / Cuban Tamarind	N
MAF	Mastichodendron foetidissimum / False Mastic	N
MYF	Myrcianthes fragrans / Simpson's Stopper	N
PEB	Persea borbonia / Red Bay	N
PID	Pimenta dioica / Allspice Tree	
PIP	Piscidia piscipula / Jamaican Dogwood	N
PLA	Plumeria acuminata / Frangipani	
PRC	Prunus caroliniana / Cherry Laurel	N
PSE	Pseudobombax ellipticum / Shaving Brush Tree	
QUV	Quercus virginiana / Southern Live Oak	N
SAS	Samanea saman / Rain Tree	
SEP	Senna polyphylla / Desert Cassia	
SID	Sideroxylon salicifolium / Bustin Willow	N
SIG	Simarouba glauca / Paradise Tree	N
SPC	Spathodea campanulata / African Tulip Tree	
SUM	Suriana maritima / Bay Cedar	N
SWM	Swietenia mahagoni / West Indian Mahogany	N
TAC	Tabebuia caraiba / Yellow Trumpet Tree	
TAD	Taxodium distichum / Bald Cypress	N
TES	Tecoma stans / Yellow Elder	
TREES	Botanical/Common	Native
CON	Cocos nucifera 'Green Malayan' / Coconut Palm	
DIA	Dictyosperma album / Hurricane Palm	
PTE	Ptychosperma elegans / Solitaire Palm	
SAP	Sabal palmetto / Cabbage Palmetto	N
THR	Thrinax radiata / Florida Thatch Palm	N

*FOR FULL PLANTING SCHEDULE, SEE SHEET LP-00



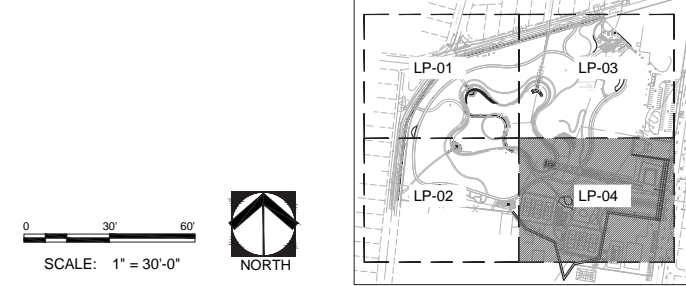
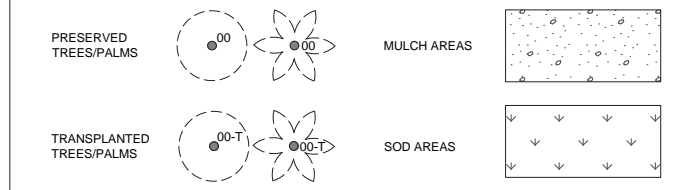
<p>CAPITAL IMPROVEMENT PROJECTS OFFICE 1701 MERIDIAN AVENUE, MIAMI BEACH, FL 33139</p>	PROJECT: BAYSHORE PARK (FORMER PAR 3) TITLE: TREES AND PALMS PLANTING PLAN	<p>LANDSCAPE ARCHITECT OF RECORD: BARRY MILLER, RLA NO. 866</p>	CITY MANAGER: JIMMY L. MORALES CIP DIRECTOR: DAVID MARTINEZ, P.E. PROJECT MANAGER: MINA SAMADI, P.E.	LA OF RECORD: BM DESIGN LA: BM DRAWN BY: SMDS CHECKER: BM SCALE: 1" = 30'-0"	5 NOT FOR CONSTRUCTION 4 3 07-02-20 90% DESIGN PROGRESS SUBMITTAL 2 06-17-19 90% DESIGN PROGRESS DRAFT 1 07-20-18 60% DESIGN PROGRESS SUBMITTAL	File Name: PLANTING PLAN SHEETS.dwg Survey Reference: Field Book: N/A Page: N/A Work Order: 201529234 Date: Sheet: Drawing: LP-03
	APPD. BY:					

TECHNICAL DRAWINGS (CANOPY PLANTING PLAN 4)



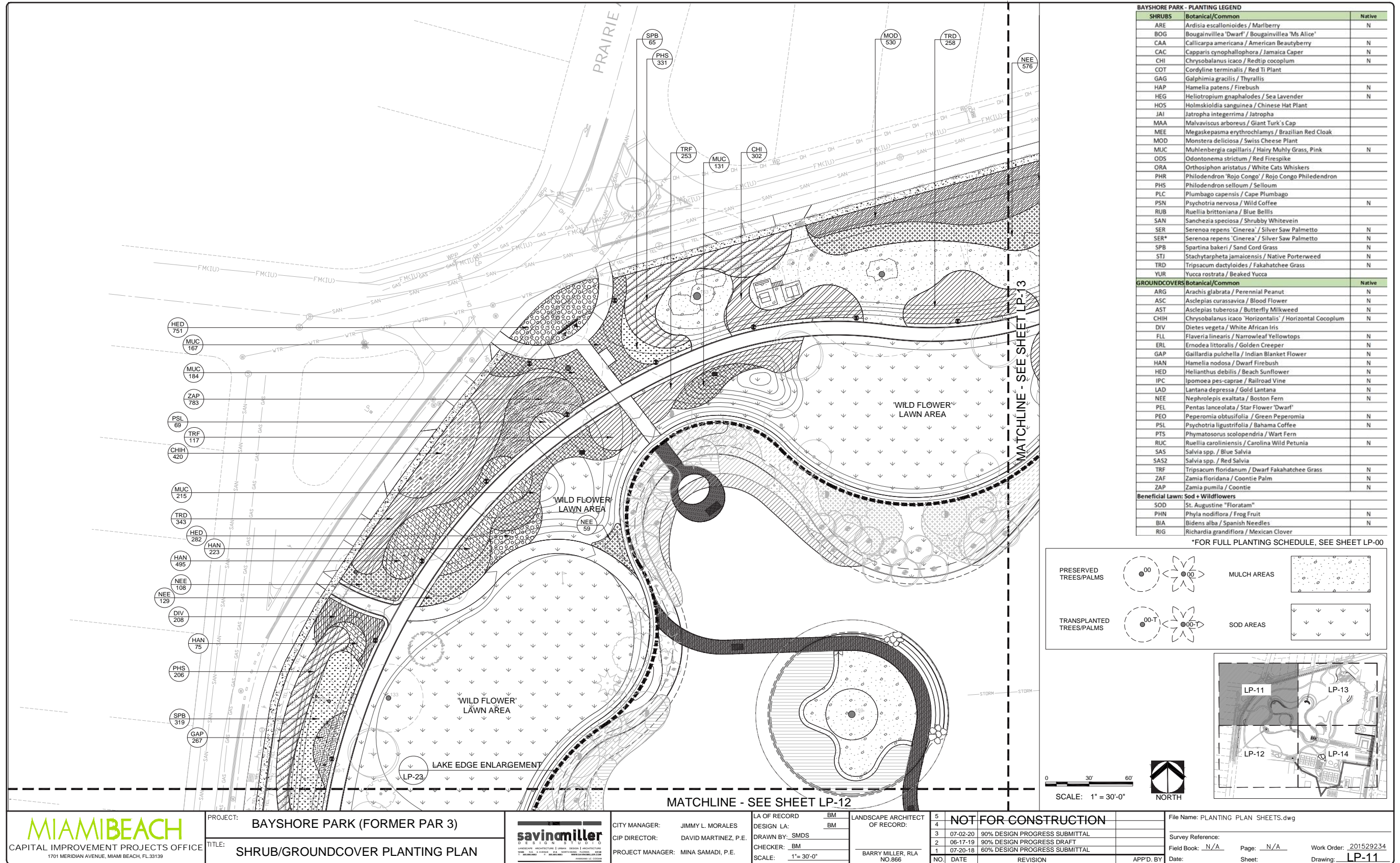
TREES	Botanical/Common	Native
ACF	Acacia farnesiana / Sweet Acacia	N
ADD	Adansonia digitata / Baobab	
ANO	Anacardium occidentale / Cashew Nut Tree	
ANG	Annona glabra / Pond Apple	N
BAV	Bauhinia variegata / Orchid Tree	
BOC-S	Bombax ceiba / Kapok Tree	
BUA	Bulnesia arborea / Verawood	
BUS	Bursera simaruba / Gumbo Limbo	N
CAB	Cassia bakeriana / Pink Shower Tree	
CAF	Cassia fistula / Golden Shower Tree	
CAH	Calliandra haematocephala / Powderpuff Tree	
CAO	Cananga odorata / Ylang-Ylang	
CAP	Caesalpinia pulcherrima / Dwarf Poinciana	
CAW	Canella winterana / Wild Cinnamon Bark	N
CAS	Cassia surattensis / Cassia	
CHO	Chrysophyllum oliviforme / Satin Leaf	N
CHS	Chorisia speciosa / Silk Floss Tree	
CIF	Citharexylum spinosum / Fiddlewood	
COD	Coccoloba diversifolia / Pigeon Plum	N
COE-S	Conocarpus erectus 'sericeus' / Silver Buttonwood	N
COE	Conocarpus erectus / Green Buttonwood	N
COG	Couroupita guianensis / Cannon Ball Tree	
COS	Cordia sebestena / Orange Geiger Tree	N
COU	Coccoloba uvifera / Sea Grape	N
DER	Delonix poinciana / Royal Poinciana	
EUR	Eugenia rhombica / Red Stopper	N
FIC	Ficus citrifolia / Shortleaf Fig	N
GUD	Guapira discolor / Blolly	N
GUS	Guaiacum sanctum / Lignum vitae	N
ILC	Ilex cassine / Dahoon Holly	N
KIP	Kigelia pinnata / Sausage Tree	
KRF	Krugiodendron ferreum / Black Ironwood	N
LAR	Laguncularia racemosa / White Mangrove	N
LAI	Lagerstroemia indica / Crape Myrtle	
LYL	Lysiloma latisiliqua / Wild Tamarind	N
LYS	Lysiloma sabicu / Cuban Tamarind	N
MAF	Mastichodendron foetidissimum / False Mastic	N
MYF	Myrcianthes fragrans / Simpson's Stopper	N
PEB	Persea borbonia / Red Bay	N
PID	Pimenta dioica / Allspice Tree	
PIP	Piscidia piscipula / Jamaican Dogwood	N
PLA	Plumeria acuminata / Frangipani	
PRC	Prunus caroliniana / Cherry Laurel	N
PSE	Pseudobombax ellipticum / Shaving Brush Tree	
QUV	Quercus virginiana / Southern Live Oak	N
SAS	Samanea saman / Rain Tree	
SEP	Senna polyphylla / Desert Cassia	
SID	Sideroxylon salicifolium / Bustin Willow	N
SIG	Simarouba glauca / Paradise Tree	N
SPC	Spathodea campanulata / African Tulip Tree	
SUM	Suriana maritima / Bay Cedar	N
SWM	Swietenia mahagoni / West Indian Mahogany	N
TAC	Tabebuia caraiba / Yellow Trumpet Tree	
TAD	Taxodium distichum / Bald Cypress	N
TES	Tecoma stans / Yellow Elder	
THR	Thrinax radiata / Florida Thatch Palm	N

*FOR FULL PLANTING SCHEDULE, SEE SHEET LP-00



<p>CAPITAL IMPROVEMENT PROJECTS OFFICE 1701 MERIDIAN AVENUE, MIAMI BEACH, FL 33139</p>	PROJECT: BAYSHORE PARK (FORMER PAR 3) TITLE: TREES AND PALMS PLANTING PLAN	<p>LANDSCAPE ARCHITECTURE & URBAN DESIGN & ARCHITECTURE 2700 N.W. 111th St., Suite 100, Miami, FL 33150 PH: 305.441.1111 FAX: 305.441.1112</p>	CITY MANAGER: JIMMY L. MORALES CIP DIRECTOR: DAVID MARTINEZ, P.E. PROJECT MANAGER: MINA SAMADI, P.E.	LA OF RECORD: BM DESIGN LA: BM DRAWN BY: SMDS CHECKER: BM SCALE: 1" = 30'-0"	LANDSCAPE ARCHITECT OF RECORD: BARRY MILLER, RLA NO. 866	5 NOT FOR CONSTRUCTION 4 3 07-20-20 90% DESIGN PROGRESS SUBMITTAL 2 06-17-19 90% DESIGN PROGRESS DRAFT 1 07-20-18 60% DESIGN PROGRESS SUBMITTAL	File Name: PLANTING PLAN SHEETS.dwg Survey Reference: Field Book: N/A Page: N/A Work Order: 201529234 Date: Sheet: Drawing: LP-04
	APP'D. BY:						

TECHNICAL DRAWINGS (UNDERSTORY PLANTING PLAN 1)



TECHNICAL DRAWINGS (UNDERSTORY PLANTING PLAN 2)

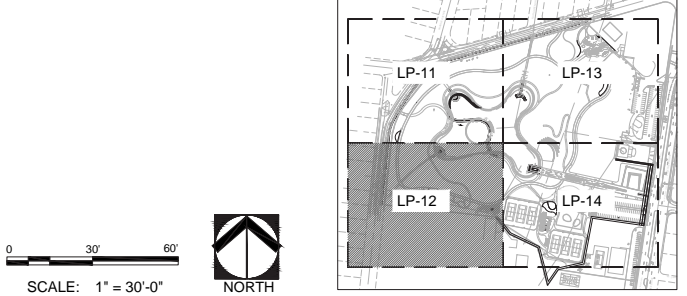
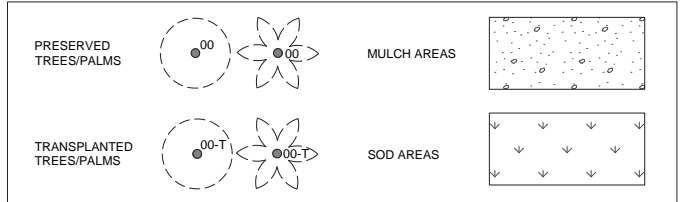


BAYSHORE PARK - PLANTING LEGEND		
SHRUBS	Botanical/Common	Native
ARE	Ardisia escallonioides / Marlberry	N
BOG	Bougainvillea 'Dwarf' / Bougainvillea 'Ms Alice'	
CAA	Callicarpa americana / American Beautyberry	N
CAC	Capparis cynophallophora / Jamaica Caper	N
CHI	Chrysobalanus icaco / Redtip cocoplum	N
COT	Cordyline terminalis / Red Ti Plant	
GAG	Galphimia gracilis / Thyralis	
HAP	Hamelia patens / Firebush	N
HEG	Heliotropium gnaphalodes / Sea Lavender	N
HOS	Holmskioldia sanguinea / Chinese Hat Plant	
JAI	Jatropha integrerrima / Jatropha	
MAA	Malvaviscus arboreus / Giant Turk's Cap	
MEE	Megaskepasma erythroclamyx / Brazilian Red Cloak	
MOD	Monstera deliciosa / Swiss Cheese Plant	
MUC	Muhlenbergia capillaris / Hairy Muhly Grass, Pink	N
ODS	Odontonema strictum / Red Firespike	
ORA	Orthosiphon aristatus / White Cats Whiskers	
PHR	Philodendron 'Rojo Congo' / Rojo Congo Philodendron	
PHS	Philodendron selloum / Selloum	
PLC	Plumbago capensis / Cape Plumbago	
PSN	Psychotria nervosa / Wild Coffee	N
RUB	Ruellia brittoniana / Blue Bellis	
SAN	Sanchezia speciosa / Shrubby Whitevein	
SER	Serenoa repens 'Cinerea' / Silver Saw Palmetto	N
SER*	Serenoa repens 'Cinerea' / Silver Saw Palmetto	N
SPB	Spartina bakeri / Sand Cord Grass	N
STJ	Stachytarpheta jamaicensis / Native Porterweed	N
TRD	Tripsacum dactyloides / Fakahatchee Grass	N
YUR	Yucca rostrata / Beaked Yucca	N

GROUNDCOVERS		
Botanical/Common	Native	
ARG	Arachis glabrata / Perennial Peanut	N
ASC	Asclepias curassavica / Blood Flower	N
AST	Asclepias tuberosa / Butterfly Milkweed	N
CHIH	Chrysobalanus icaco 'Horizontalis' / Horizontal Cocoplum	N
DIV	Diets vegeta / White African Iris	
FLL	Flaveria linearis / Narrowleaf Yellowtops	N
ERL	Ernodea littoralis / Golden Creeper	N
GAP	Gaillardia pulchella / Indian Blanket Flower	N
HAN	Hamelia nodosa / Dwarf Firebush	N
HED	Helianthus debilis / Beach Sunflower	N
IPC	Ipomoea pes-caprae / Railroad Vine	N
LAD	Lantana depressa / Gold Lantana	N
NEE	Nephrolepis exaltata / Boston Fern	N
PEL	Pentas lanceolata / Star Flower 'Dwarf'	
PEO	Peperomia obtusifolia / Green Peperomia	N
PSL	Psychotria ligustrifolia / Bahama Coffee	N
PTS	Phymatosorus scolopendria / Wart Fern	
RUC	Ruellia caroliniensis / Carolina Wild Petunia	N
SAS	Salvia spp. / Blue Salvia	
SAS2	Salvia spp. / Red Salvia	
TRF	Tripsacum floridanum / Dwarf Fakahatchee Grass	N
ZAF	Zamia floridana / Coontie Palm	N
ZAP	Zamia pumila / Coontie	N

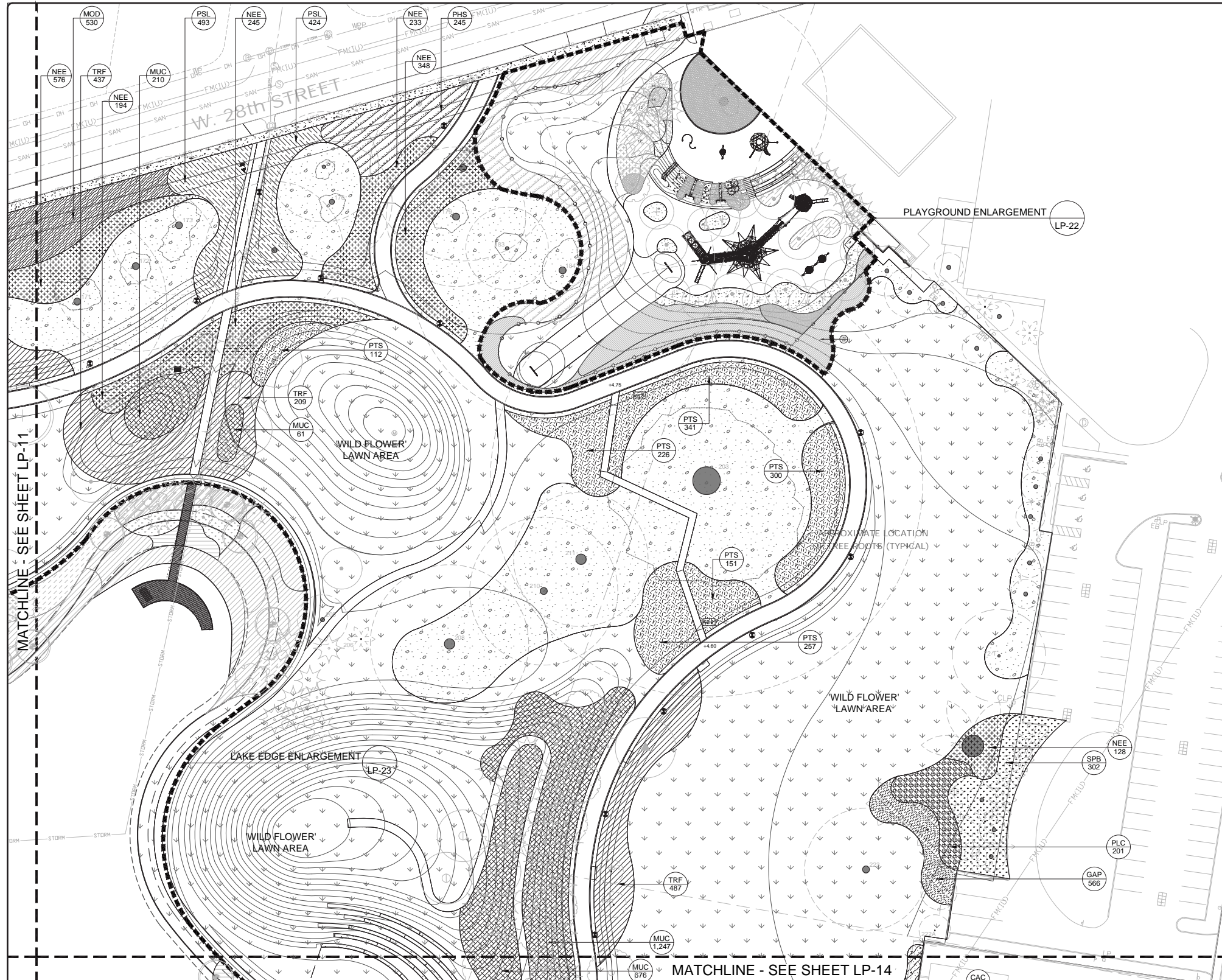
Beneficial Lawn: Sod + Wildflowers
 SOD St. Augustine 'Floritam'
 PHN Phyla nodiflora / Frog Fruit
 BIA Bidens alba / Spanish Needles
 RIG Richardia grandiflora / Mexican Clover

*FOR FULL PLANTING SCHEDULE, SEE SHEET LP-00



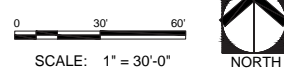
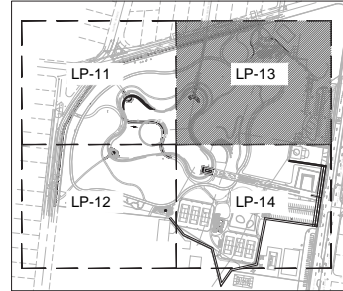
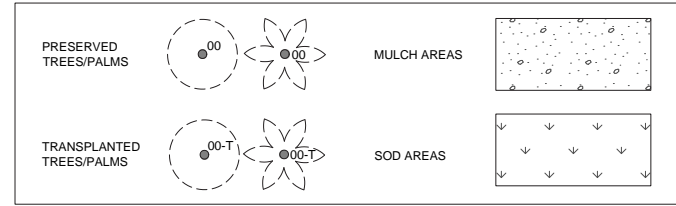
<p>MIAMIBEACH CAPITAL IMPROVEMENT PROJECTS OFFICE 1701 MERIDIAN AVENUE, MIAMI BEACH, FL 33139</p>	PROJECT: BAYSHORE PARK (FORMER PAR 3) TITLE: SHRUB/GROUNDCOVER PLANTING PLAN	<p>LANDSCAPE ARCHITECTURE & DESIGN 222 N. MIAMI AVENUE, SUITE 1000 MIAMI, FL 33136 PH: 305.371.1111 FAX: 305.371.1112 WWW.SAVINOMILLER.COM</p>	CITY MANAGER: JIMMY L. MORALES CIP DIRECTOR: DAVID MARTINEZ, P.E. PROJECT MANAGER: MINA SAMADI, P.E.	LA OF RECORD: BM DESIGN LA: BM DRAWN BY: SMDS CHECKER: BM SCALE: 1" = 30'-0"	LANDSCAPE ARCHITECT OF RECORD: BARRY MILLER, RLA NO. 866	5 4 3 2 1	NOT FOR CONSTRUCTION 07-02-20 90% DESIGN PROGRESS SUBMITTAL 06-17-19 90% DESIGN PROGRESS DRAFT 07-20-18 60% DESIGN PROGRESS SUBMITTAL	File Name: PLANTING PLAN SHEETS.dwg Survey Reference: Field Book: N/A Page: N/A Work Order: 201529234 Date: Sheet: Drawing: LP-12
	<p>DESIGN STUDIO</p>			APP'D. BY:				

TECHNICAL DRAWINGS (UNDERSTORY PLANTING PLAN 3)



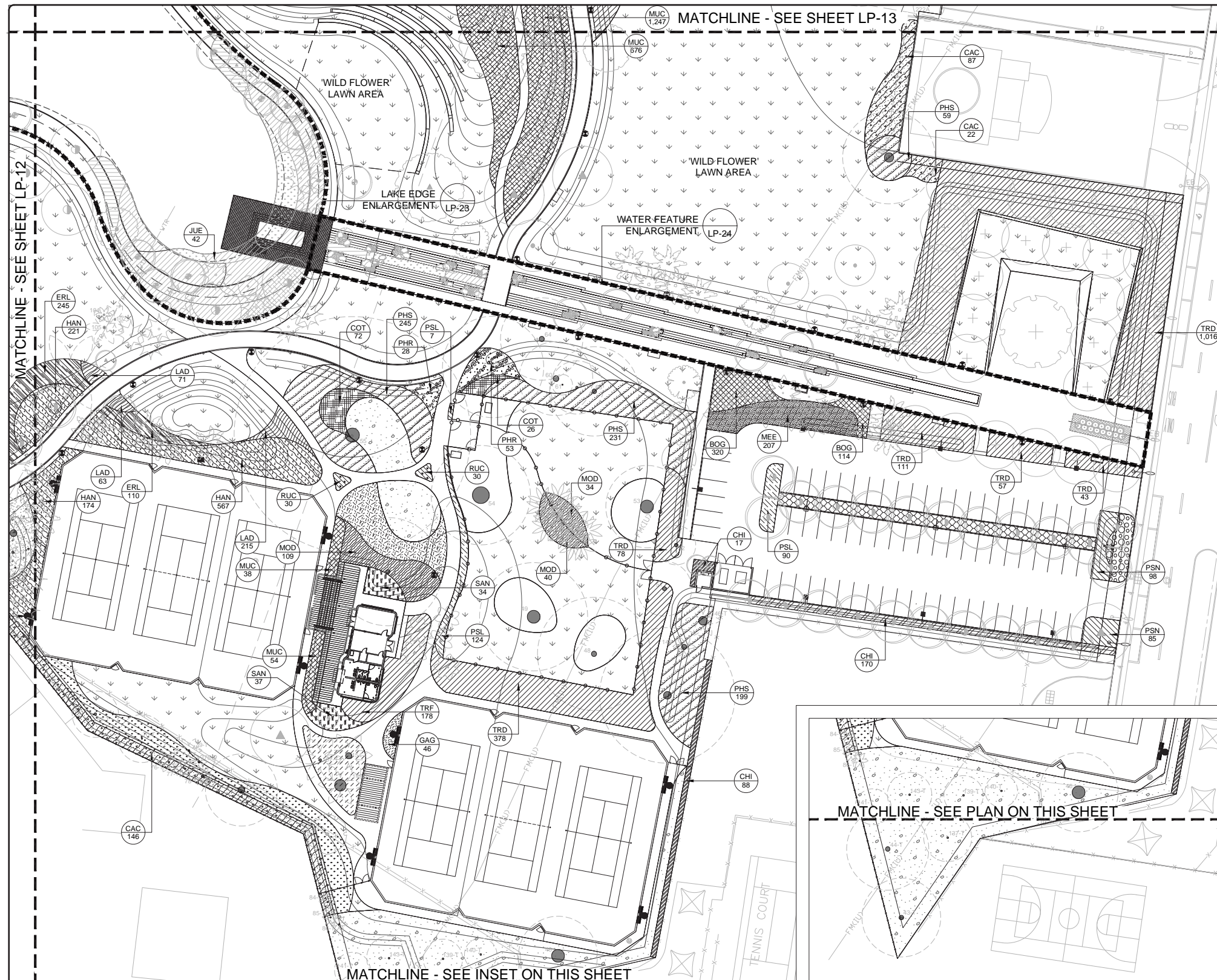
BAYSHORE PARK - PLANTING LEGEND		
SHRUBS	Botanical/Common	Native
ARE	Ardisia escallonioides / Marlberry	N
BOG	Bougainvillea 'Dwarf' / Bougainvillea 'Ms Alice'	
CAA	Callicarpa americana / American Beautyberry	N
CAC	Capparis cynophallophora / Jamaica Caper	N
CHI	Chrysobalanus icaco / Redtip cocoplum	N
COT	Cordyline terminalis / Red Ti Plant	
GAG	Galphimia gracilis / Thyrallis	
HAP	Hamelia patens / Firebush	N
HEG	Heliotropium gnaphalodes / Sea Lavender	N
HOS	Holmskioldia sanguinea / Chinese Hat Plant	
JAI	Jatropha integririma / Jatropha	
MAA	Malvaviscus arboreus / Giant Turk's Cap	
MEE	Megaskepasma erythrochlamys / Brazilian Red Cloak	
MOD	Monstera deliciosa / Swiss Cheese Plant	
MUC	Muhlenbergia capillaris / Hairy Muhly Grass, Pink	N
ODS	Odontonema strictum / Red Firespike	
ORA	Orthosiphon aristatus / White Cats Whiskers	
PHR	Philodendron 'Rojo Congo' / Rojo Congo Philodendron	
PHS	Philodendron selloum / Selloum	
PLC	Plumbago capensis / Cape Plumbago	
PSN	Psychotria nervosa / Wild Coffee	N
RUB	Ruellia brittoniana / Blue Bells	
SAN	Sanchezia speciosa / Shrubby Whitevein	
SER	Serenoa repens 'Cinerea' / Silver Saw Palmetto	N
SER*	Serenoa repens 'Cinerea' / Silver Saw Palmetto	N
SPB	Spartina bakeri / Sand Cord Grass	N
STJ	Stachytarpheta jamaicensis / Native Porterweed	N
TRD	Tripsacum dactyloides / Fakahatchee Grass	N
YUR	Yucca rostrata / Beaked Yucca	N
GROUNDCOVERS	Botanical/Common	Native
ARG	Arachis glabrata / Perennial Peanut	N
ASC	Asclepias curassavica / Blood Flower	N
AST	Asclepias tuberosa / Butterfly Milkweed	N
CHI	Chrysobalanus icaco 'Horizontalis' / Horizontal Cocoplum	N
DIV	Diets vegeta / White African Iris	
FLL	Flaveria linearis / Narrowleaf Yellowtops	N
ERL	Ernodea littoralis / Golden Creeper	N
GAP	Gaillardia pulchella / Indian Blanket Flower	N
HAN	Hamelia nodosa / Dwarf Firebush	N
HED	Helianthus debilis / Beach Sunflower	N
IPC	Ipomoea pes-caprae / Railroad Vine	N
LAD	Lantana depressa / Gold Lantana	N
NEE	Nephrrolepis exaltata / Boston Fern	N
PEL	Pentas lanceolata / Star Flower Dwarf	
PEO	Peperomia obtusifolia / Green Peperomia	N
PSL	Psychotria ligustrifolia / Bahama Coffee	N
PTS	Phymatosorus scolopendria / Wart Fern	N
RUC	Ruellia caroliniensis / Carolina Wild Petunia	N
SAS	Salvia spp. / Blue Salvia	
SAS2	Salvia spp. / Red Salvia	
TRF	Tripsacum floridanum / Dwarf Fakahatchee Grass	N
ZAF	Zamia floridana / Coontie Palm	N
ZAP	Zamia pumila / Coontie	N
Beneficial Lawn: Sod + Wildflowers		
SOD	St. Augustine 'Floritam'	
PHN	Phyla nodiflora / Frog Fruit	N
BIA	Bidens alba / Spanish Needles	N
RIG	Richardia grandiflora / Mexican Clover	N

*FOR FULL PLANTING SCHEDULE, SEE SHEET LP-00



<p>MIAMI BEACH CAPITAL IMPROVEMENT PROJECTS OFFICE 1701 MERIDIAN AVENUE, MIAMI BEACH, FL 33139</p>	PROJECT: BAYSHORE PARK (FORMER PAR 3) TITLE: SHRUB/GROUNDCOVER PLANTING PLAN	<p>LANDSCAPE ARCHITECT OF RECORD BARRY MILLER, RLA NO. 866</p>	CITY MANAGER: JIMMY L. MORALES CIP DIRECTOR: DAVID MARTINEZ, P.E. PROJECT MANAGER: MINA SAMADI, P.E.	LA OF RECORD: BM DESIGN LA: BM DRAWN BY: SMDS CHECKER: BM SCALE: 1" = 30'-0"	LANDSCAPE ARCHITECT OF RECORD: BARRY MILLER, RLA NO. 866	<table border="1"> <tr><td>5</td><td>NOT FOR CONSTRUCTION</td></tr> <tr><td>4</td><td></td></tr> <tr><td>3</td><td>07-02-20 90% DESIGN PROGRESS SUBMITTAL</td></tr> <tr><td>2</td><td>06-17-19 90% DESIGN PROGRESS DRAFT</td></tr> <tr><td>1</td><td>07-20-18 60% DESIGN PROGRESS SUBMITTAL</td></tr> <tr><td>NO.</td><td>DATE REVISION</td></tr> </table>	5	NOT FOR CONSTRUCTION	4		3	07-02-20 90% DESIGN PROGRESS SUBMITTAL	2	06-17-19 90% DESIGN PROGRESS DRAFT	1	07-20-18 60% DESIGN PROGRESS SUBMITTAL	NO.	DATE REVISION	File Name: PLANTING PLAN SHEETS.dwg Survey Reference: Field Book: N/A Page: N/A Work Order: 201529234 Date: Sheet: Drawing: LP-13
	5	NOT FOR CONSTRUCTION																	
4																			
3	07-02-20 90% DESIGN PROGRESS SUBMITTAL																		
2	06-17-19 90% DESIGN PROGRESS DRAFT																		
1	07-20-18 60% DESIGN PROGRESS SUBMITTAL																		
NO.	DATE REVISION																		
APP'D. BY:																			

TECHNICAL DRAWINGS (UNDERSTORY PLANTING PLAN 4)

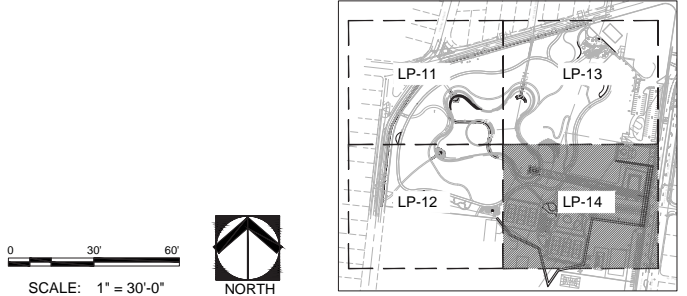
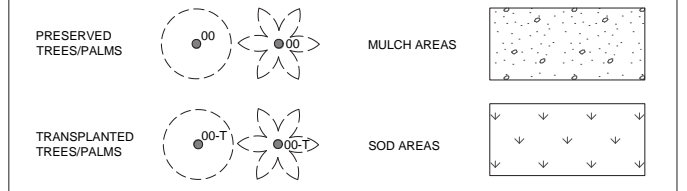


BAYSHORE PARK - PLANTING LEGEND		
SHRUBS	Botanical/Common	Native
ARE	Ardisia escallonioides / Marlberry	N
BOG	Bougainvillea 'Dwarf' / Bougainvillea 'Ms Alice'	
CAA	Calliandra americana / American Beautyberry	N
CAC	Capparis cynophallophora / Jamaica Caper	N
CHI	Chrysobalanus icaco / Redtip cocoplum	N
COT	Cordyline terminalis / Red Ti Plant	
GAG	Galphimia gracilis / Thyralis	
HAP	Hamelia patens / Firebush	N
HEG	Heliotropium gnaphalodes / Sea Lavender	N
HOS	Holmskioldia sanguinea / Chinese Hat Plant	
JAI	Jatropha integerrima / Jatropha	
MAA	Malvastrum arboreum / Giant Turk's Cap	
MEE	Megaskepasma erythrochlamys / Brazilian Red Cloak	
MOD	Monstera deliciosa / Swiss Cheese Plant	
MUC	Muhlenbergia capillaris / Hairy Muhly Grass, Pink	N
ODS	Odontonema strictum / Red Firespike	
ORA	Orthosiphon aristatus / White Cats Whiskers	
PHR	Philodendron 'Rojo Congo' / Rojo Congo Philodendron	
PHS	Philodendron selloum / Selloum	
PLC	Plumbago capensis / Cape Plumbago	
PSN	Psychotria nervosa / Wild Coffee	N
RUB	Ruellia brittoniana / Blue Bells	
SAN	Sanchezia speciosa / Shrubby Whitevein	
SER	Serenoa repens 'Cinerea' / Silver Saw Palmetto	N
SER*	Serenoa repens 'Cinerea' / Silver Saw Palmetto	N
SPB	Spartina bakeri / Sand Cord Grass	N
STJ	Stachytarpheta jamaicensis / Native Porterweed	N
TRD	Tripsacum dactyloides / Fakahatchee Grass	N
YUR	Yucca rostrata / Beaked Yucca	

GROUNDCOVERS		
Botanical/Common	Native	
ARG	Arachis glabrata / Perennial Peanut	N
ASC	Asclepias curassavica / Blood Flower	N
AST	Asclepias tuberosa / Butterfly Milkweed	N
CHH	Chrysobalanus icaco 'Horizontalis' / Horizontal Cocoplum	N
DIV	Dietes vegeta / White African Iris	
FLL	Flaveria linearis / Narrowleaf Yellowtops	N
ERL	Ernodea littoralis / Golden Creeper	N
GAP	Gaillardia pulchella / Indian Blanket Flower	N
HAN	Hamelia nodosa / Dwarf Firebush	N
HED	Helianthus debilis / Beach Sunflower	N
IPC	Ipomoea pes-caprae / Railroad Vine	N
LAD	Lantana depressa / Gold Lantana	N
NEE	Neprolepis exaltata / Boston Fern	N
PEL	Pentas lanceolata / Star Flower 'Dwarf'	
PEO	Peperomia obtusifolia / Green Peperomia	N
PSL	Psychotria ligustrifolia / Bahama Coffee	N
PTS	Phymatosorus scolopendria / Wart Fern	
RUC	Ruellia caroliniensis / Carolina Wild Petunia	N
SAS	Salvia spp. / Blue Salvia	
SAS2	Salvia spp. / Red Salvia	
TRF	Tripsacum floridanum / Dwarf Fakahatchee Grass	N
ZAF	Zamia floridana / Coontie Palm	N
ZAP	Zamia pumila / Coontie	N

Beneficial Lawn: Sod + Wildflowers
 SOD St. Augustine "Floratum"
 PHN Phyla nodiflora / Frog Fruit
 BIA Bidens alba / Spanish Needles
 RIG Richardia grandiflora / Mexican Clover

*FOR FULL PLANTING SCHEDULE, SEE SHEET LP-00



<p>MIAMIBEACH CAPITAL IMPROVEMENT PROJECTS OFFICE 1701 MERIDIAN AVENUE, MIAMI BEACH, FL 33139</p>	PROJECT: BAYSHORE PARK (FORMER PAR 3) TITLE: SHRUB/GROUNDCOVER PLANTING PLAN	<p>LANDSCAPE ARCHITECTURE & DESIGN</p>	CITY MANAGER: JIMMY L. MORALES CIP DIRECTOR: DAVID MARTINEZ, P.E. PROJECT MANAGER: MINA SAMADI, P.E.	LA OF RECORD: BM DESIGN LA: BM DRAWN BY: SMDS CHECKER: BM SCALE: 1" = 30'-0"	LANDSCAPE ARCHITECT OF RECORD: BARRY MILLER, RLA NO. 866	5 NOT FOR CONSTRUCTION 4 07-02-20 90% DESIGN PROGRESS SUBMITTAL 3 06-17-19 90% DESIGN PROGRESS DRAFT 2 07-20-18 60% DESIGN PROGRESS SUBMITTAL 1 07-20-18	File Name: PLANTING PLAN SHEETS.dwg Survey Reference: Field Book: N/A Page: N/A Work Order: 201529234 Date: Sheet: Drawing: LP-14
	APP'D. BY: _____						