

# TREE DISPOSITION NOTES

TD100

## TREES & PLANTING TO BE PRESERVED NOTES

- EXISTING TREES TO BE PRESERVED SHALL BEAR SAME RELATIONSHIP TO FINISHED GRADE AS THEY BEAR TO PRE-CONSTRUCTION GRADE.
- EXISTING TREES TO BE PRESERVED SHALL BE PROTECTED WITH STURDY, WEATHERPROOF FENCING AT A MINIMUM FOUR (4) FEET HEIGHT INSTALLED NO CLOSER TO THE TREE TRUNK THAN ITS DRIPLINE. THIS FENCE SHALL BE MAINTAINED IN WORKING ORDER DURING ALL PHASES OF CONSTRUCTION. MAINTAIN TREE PROTECTION ZONES FREE OF WEEDS AND TRASH.
- NO WORK SHALL BE CONDUCTED WITHIN THE DRIPLINE, UNLESS REVIEWED AND APPROVED BY THE LANDSCAPE ARCHITECT. ALL WORK APPROVED WITHIN THE DRIPLINE SHALL BE COMPLETED BY HAND. PROTECT ROOT SYSTEMS FROM PONDING, ERODING, OR EXCESSIVE WETTING.
- THE PROJECT LIMIT OF CONSTRUCTION AND ALL EXISTING VEGETATION TO REMAIN IS TO BE CLEARLY DEFINED BY STURDY, WEATHERPROOF FENCING AT A MINIMUM OF FOUR (4) FEET HIGH.

## TREES & PLANTING TO BE RELOCATED NOTES

- THE CONTRACTOR IS TO ROOT PRUNE ALL PLANT MATERIAL 90 DAYS MINIMUM IN ADVANCE OF MOVING PLANT MATERIAL.
- THE CONTRACTOR IS TO WARRANTY ALL RELOCATED PLANT MATERIAL.
- THE CONTRACTOR IS RESPONSIBLE FOR THE WATERING AND FERTILIZING OF ALL PLANT RELOCATED PLANT MATERIAL UNTIL PROJECT COMPLETION.
- ALL RELOCATED PLANT MATERIAL IS TO BE APPROPRIATELY BRACED.
- CONTRACTOR TO NOTIFY LANDSCAPE ARCHITECT TWO WEEKS IN ADVANCE OF ALL SCHEDULED WORK PERTAINING TO THE RELOCATION OF SITE TREES.

## TREES & PLANTING TO BE REMOVED NOTES

- THE CONTRACTOR IS TO COMPLETELY REMOVE ALL PLANTER MATERIAL DESIGNATED FOR REMOVAL (I.E. ROOT BALL, DEBRIS, SAW DUST, ETC.).
- THE CONTRACTOR IS TO BACKFILL ALL EXCAVATED ROOT BALLS FLUSH TO THE ADJACENT ELEVATION LEVEL.
- CONTRACTOR TO NOTIFY LANDSCAPE ARCHITECT TWO WEEKS IN ADVANCE OF ALL SCHEDULED WORK PERTAINING TO THE RELOCATION OF SITE TREES.

## MITIGATION NOTES

- THE PROPOSED PLAN SPECIFIES THE REMOVAL OF 0 SQUARE FEET OF CANOPY AREA PER CITY OF MIAMI BEACH CODE OF ORDINANCES, CHAPTER 46, DIVISION 2.
- THE PLANTING IS BEYOND THE LIMIT OF WORK AND WITHIN THE RIGHT OF WAY, NO PROTECTION IS PROPOSED.

## TREE PROTECTION NOTES

- PROTECTION FENCE SHALL BE GALVANIZED CHAIN LINK STANDARD 2"x2" MESH.
- PROVIDE HINGED GATE.
- ALTERNATE: 2X4 WOOD POSTS (6'-0" O.C. MAX) WITH THREE EVENLY SPACED WOODEN RAILS. MIN. HT 4'
- POSTS MAY BE SHIFTED TO AVOID ROOTS.
- NO STORAGE, DEBRIS, VEHICULAR TRAFFIC OR EQUIPMENT CLEANING IS ALLOWED WITHIN THE PROTECTED AREA.
- REFER TO MUNICIPAL REQUIREMENTS FOR ADDITIONAL INFORMATION.

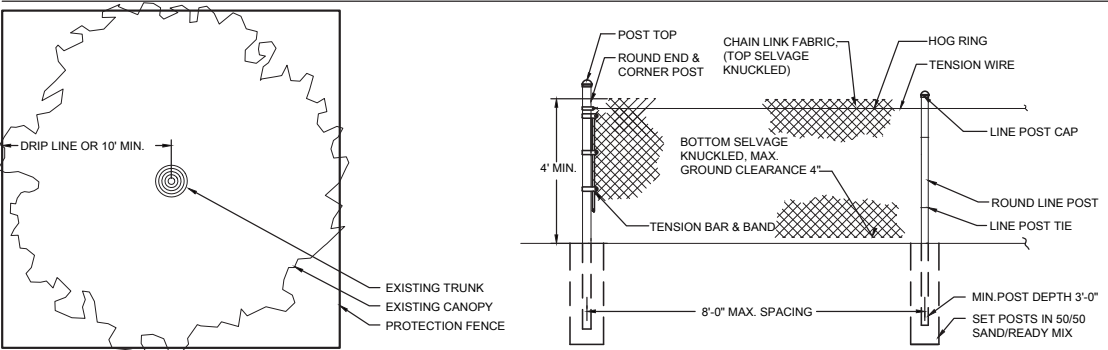
## DEFINITIONS

- TREE: ANY SELF-SUPPORTING WOODY PLANT OR PALM WHICH USUALLY HAS A SINGLE MAIN AXIS OR TRUNK, WITH A MINIMUM TRUNK DIAMETER AT BREAST HEIGHT OF TWO INCHES AND A MINIMUM OVERALL HEIGHT OF 12 FEET. THIS DEFINITION EXCLUDES PLANTS WHICH ARE DEFINED AS SHRUBS, HEDGES, VINES, OR GROUND COVERS. PALMS SHALL HAVE A MINIMUM HEIGHT OF 14 FEET IN ORDER TO BE CLASSIFIED AS A TREE. - CITY OF MIAMI BEACH CODE OF ORDINANCES, CHAPTER 46, DIVISION 2

## TREES DISPOSITION SCHEDULE

TREE No.	TREE - LATIN NAME	TREE - COMMON NAME	DIAMETER at BREAST HEIGHT (in inches) INC. CUM FOR MULTI	APPROXIMATE HEIGHT OF CANOPY TREES (in feet)	CANOPY DIAMETER (in feet)	CANOPY (in Sq. Ftt.)	DISPOSITION	CONDITION	REMOVAL- MUNICIPAL CRITERIA AND NOTES	
									CRITERIA	CANOPY SQ. FT.
1	Washingtonia robusta	MEXICAN FAN PALM	15	48	10	79	REMAIN	FAIR		
2	Washingtonia robusta	MEXICAN FAN PALM	13	45	10	79	REMAIN	FAIR		
REMOVAL TOTAL:										0

## TREE PROTECTION DETAIL



PLAN

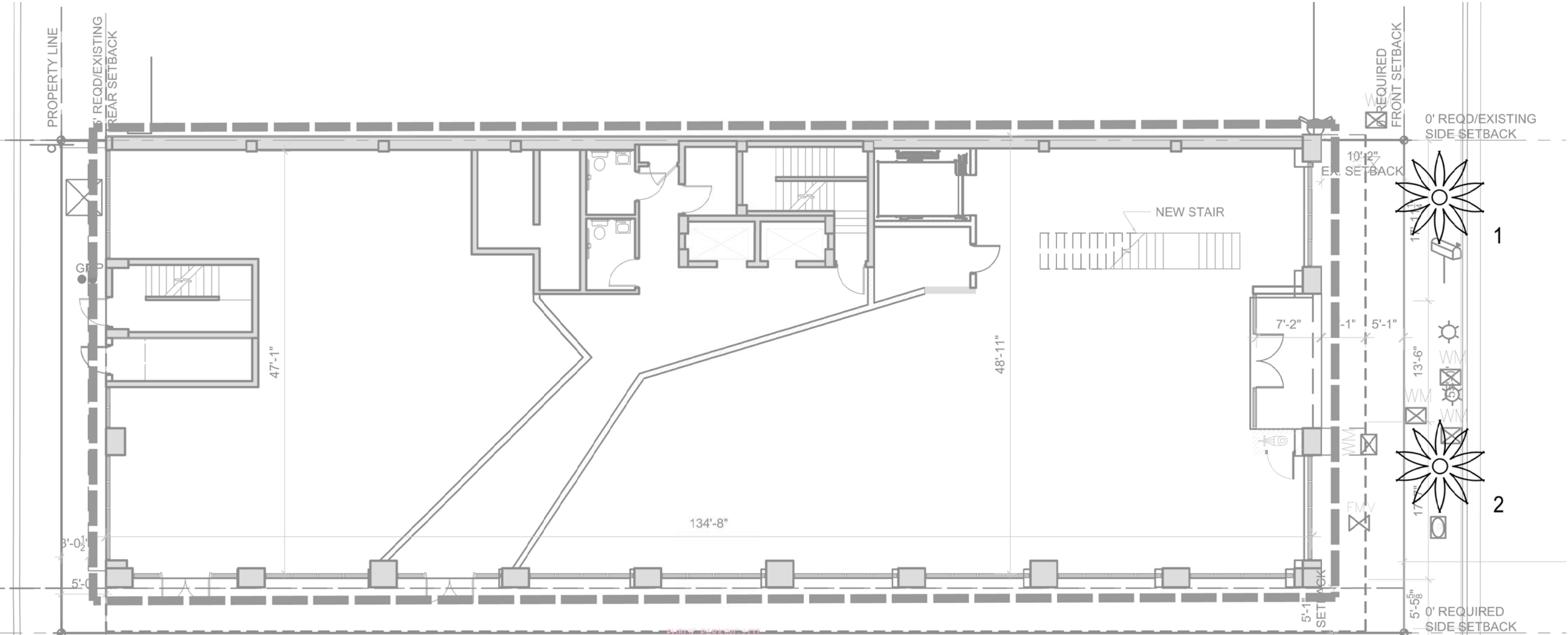
ELEVATION

LAND

2610 NORTH MIAMI AVENUE  
MIAMI, FL 33127  
614.439.4895  
WWW.LAND.DESIGN

# TREE DISPOSITION PLAN

TD101



**TREE DISPOSITION LEGEND**

	TREE TO BE PRESERVED		TREE TO BE RELOCATED		TREE TO BE REMOVED
	PALM TO BE PRESERVED		PALM TO BE RELOCATED		PALM TO BE REMOVED

— LIMIT OF WORK

**SPACES**

**LAND**

2610 NORTH MIAMI AVENUE  
MIAMI, FL 33127  
614.439.4895  
WWW.LAND.DESIGN

**SCALE: 3/32" = 1'-0"**