

**PROPRIETARY**

ITEM	DESCRIPTION
1	POLE SKIN
2	TOP PLATE
3	BOTTOM PLATE
4	DOOR SUPPORT FRAME
5	REAR DUCT LINING
6	DUCT END CAPS
7	DUCT SEPARATOR
8	ION MOUNTING PLATE
9	ION TOP HOLDING ASSEMBLY
10	STRUCTURAL MEMBERS/ WIREWAY
11	DUCT WIREWAY LINING
12	M-ION
13	FILLER BLOCK
14	FRONT DUCT LINING
15	DOOR LINING
16	DOOR

NOTES:  
1. STEEL COMPONENTS SHOWN IN GREEN, NOISE ATTENUATING FOAM SHOWN IN GRAY  
2. DESIGN NOT YET STRUCTURALLY VERIFIED, SMALL CHANGES TO THICKNESS AND MATERIAL SPECIFICATION OF STEEL COMPONENTS MAY BE REQUIRED TO MEET REQUIRED LOADING.

**ConcealFab Corporation**

3265 FILLMORE RIDGE HEIGHTS  
COLORADO SPRINGS, CO 80907  
PHONE :719-599-3400  
FAX: 719-599-0057

PROPRIETARY INFORMATION  
USE, REPRODUCTION, OR  
DISCLOSURE IS SUBJECT TO  
RESTRICTIONS SET FORTH IN  
NON-DISCLOSURE AGREEMENT  
AND OTHER CONTRACT  
DOCUMENTS PERTAINING TO THIS  
PROJECT

**Project Information:**

PROJECT  
**12" DIAMETER ION  
UTILITY POLE**

Rev: Date: Description: By:

A	07/10/13	NEW RELEASE	OBC
B	08/21/13	REVISED DESIGN	OBC

DO NOT  
SCALE DWG

DIMENSIONS ARE IN INCHES

DECIMAL	ANGLE	FRACTION
X.XX ± 0.020	±1°	±1/16"
X.XXX ± 0.010		

Consultant:

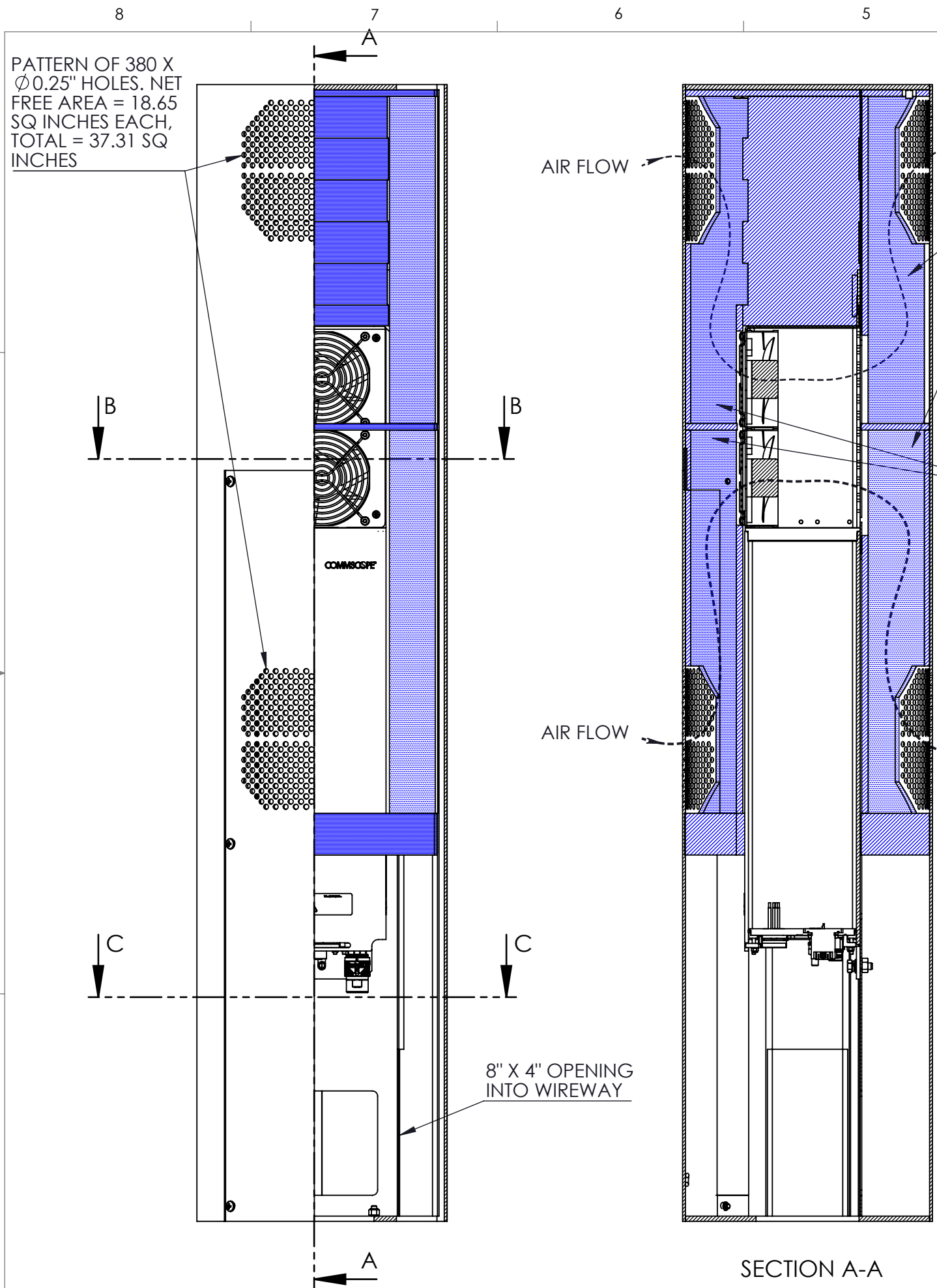
Consultant:

Sheet Title:

**12" ION  
UTILITY POLE  
BOM**

Part Number:

**001485**



AIR OUTLET DUCT  
18.61 SQ INCHES  
AREA UP & DOWN  
= 37.22 SQ INCHES

AIR INLET DUCT  
18.78 SQ INCHES  
AREA UP & DOWN  
= 37.56 SQ INCHES

WIREWAY SHOWING  
9 SIGNAL CABLES  
ALREADY ROUTED  
THROUGH PLUS ONE  
CONNECTOR BEING  
PASSED THROUGH

1/4" RIVET NUT  
AND 1/4" CH  
SCREW HATCH  
FASTENING

NOISE  
ATTENUATING  
FOAM

M-ION RADIO UNIT

SECTION B-B

GROUNDING STUD

4" X 2" X 14GA  
RECTANGULAR TUBE  
(VERTICAL WIREWAY)

12" OD X  
10GA STEEL

REMOVEABLE  
DOOR HATCH

SECTION C-C

SECTION A-A

**PROPRIETARY**

KEY

NOISE ATENUATING FOAM (SECTION)  
NOISE ATENUATING FOAM (END VIEW)

**ConcealFab Corporation**  
3265 FILLMORE RIDGE HEIGHTS  
COLORADO SPRINGS, CO 80907  
PHONE : 719-599-3400  
FAX: 719-599-0057

PROPRIETARY INFORMATION  
USE, REPRODUCTION, OR  
DISCLOSURE IS SUBJECT TO  
RESTRICTIONS SET FORTH IN  
NON-DISCLOSURE AGREEMENT  
AND OTHER CONTRACT  
DOCUMENTS PERTAINING TO THIS  
PROJECT

Project Information:

PROJECT  
**12" DIAMETER ION  
UTILITY POLE**

Rev: Date: Description: By:

A	07/10/13	NEW RELEASE	OBC
B	08/26/13	REVISED DESIGN	OBC

DO NOT  
SCALE DWG

DIMENSIONS ARE IN INCHES

DECIMAL	ANGLE	FRACTION
X.XX ± 0.020	±1°	±1/16"
X.XXX ± 0.010		

Consultant:

Consultant:

Sheet Title:

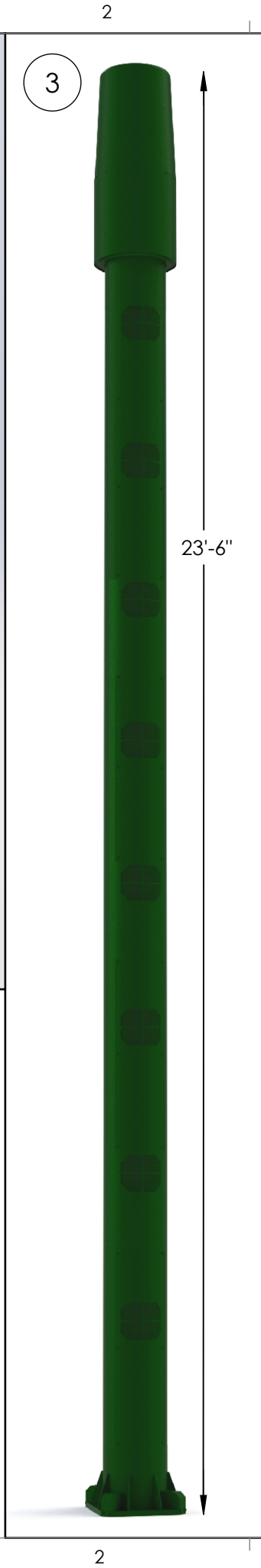
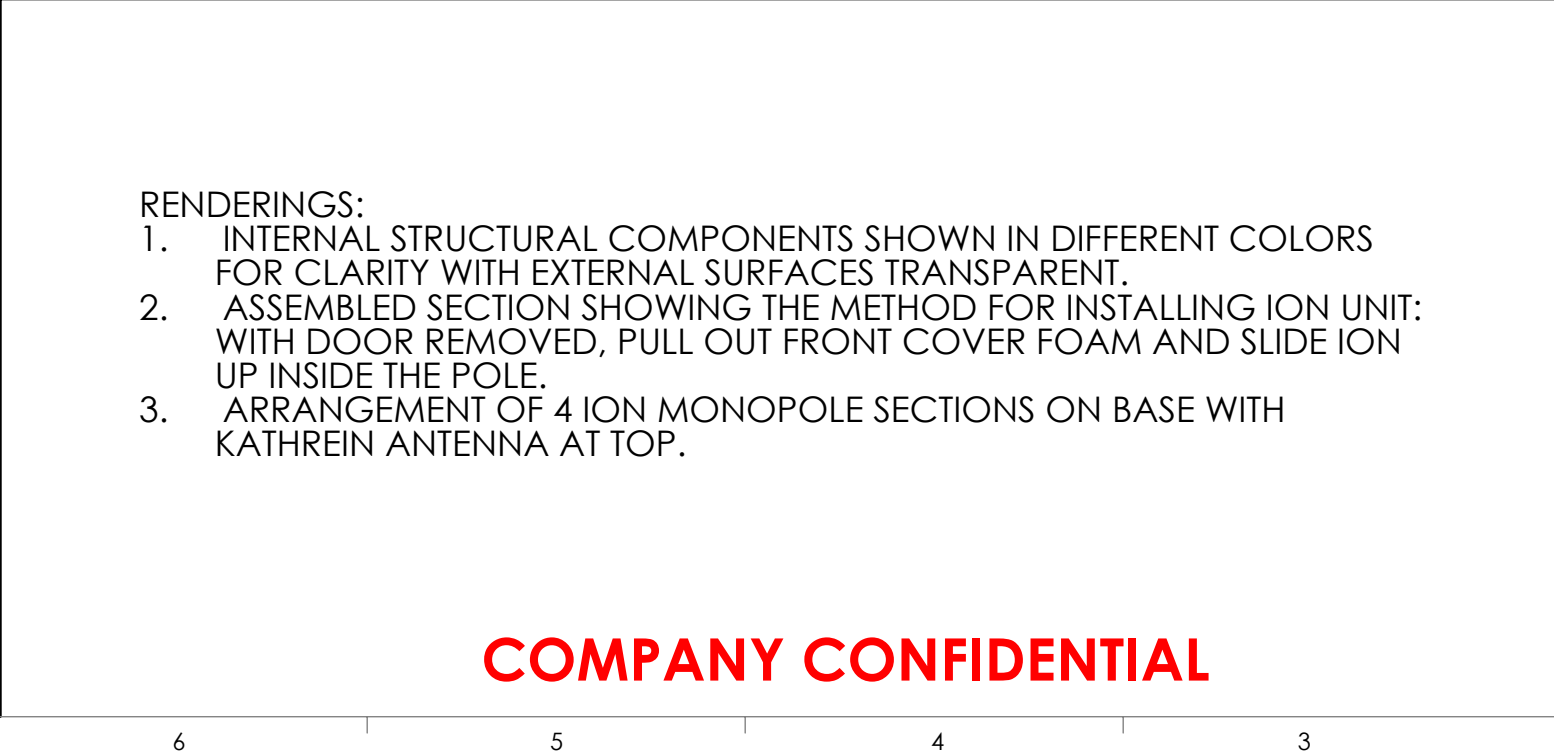
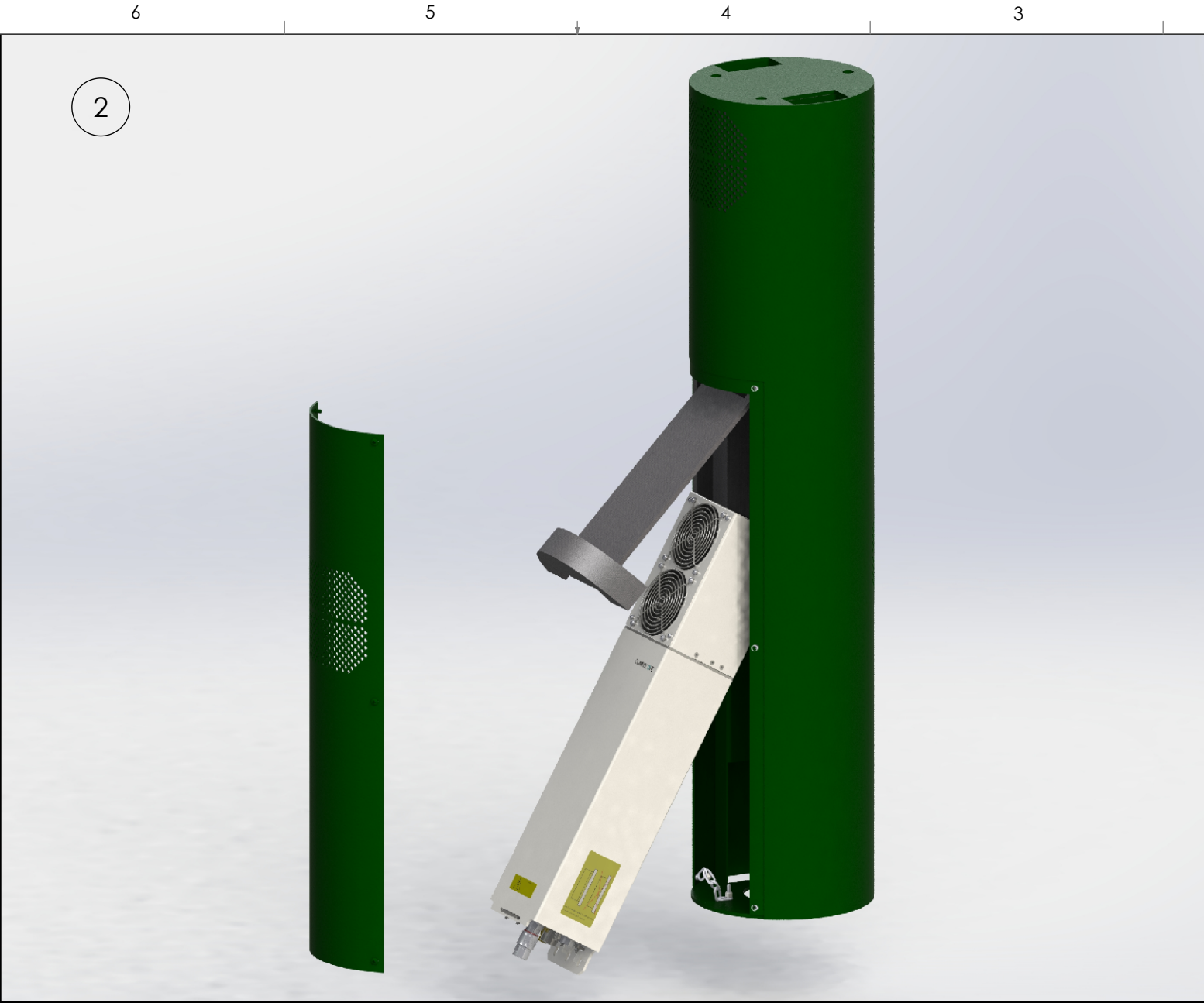
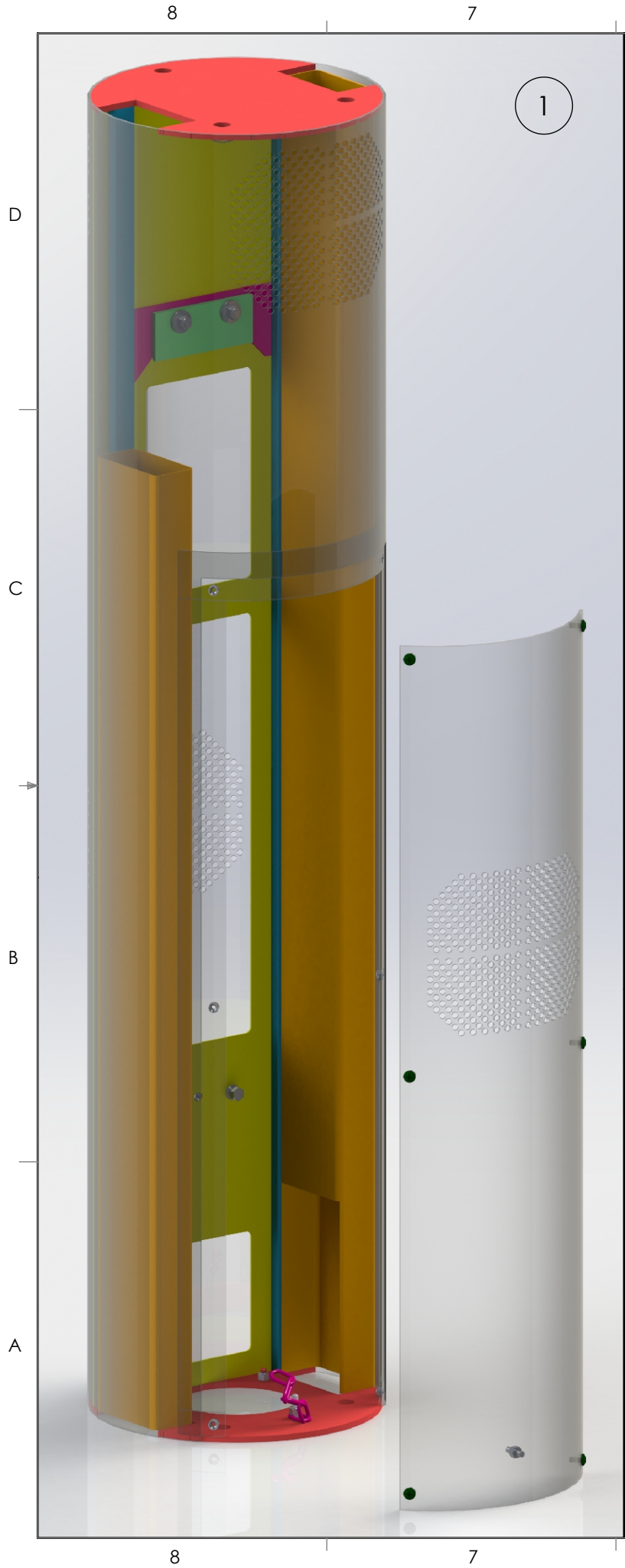
**12" ION  
UTILITY POLE  
SECTION VIEWS**

Part Number:

**001486**

SCALE 1:6





**ConcealFab Corporation**

3265 FILLMORE RIDGE HEIGHTS  
COLORADO SPRINGS, CO 80907  
PHONE : 719-599-3400  
FAX: 719-599-0057

PROPRIETARY INFORMATION  
USE, REPRODUCTION, OR  
DISCLOSURE IS SUBJECT TO  
RESTRICTIONS SET FORTH IN  
NON-DISCLOSURE AGREEMENT  
AND OTHER CONTRACT  
DOCUMENTS PERTAINING TO THIS  
PROJECT

**Project Information:**

PROJECT

**12" DIAMETER ION  
UTILITY POLE**

Rev:	Date:	Description:	By:
A	07/10/13	NEW RELEASE	OBC
B	08/26/13	REVISED DESIGN	OBC

DO NOT SCALE DWG

DIMENSIONS ARE IN INCHES

DECIMAL	ANGLE	FRACTION
X.XX ± 0.020	±1°	±1/16"
X.XXX ± 0.010		

**Consultant:**

**Consultant:**

**Sheet Title:**

**12" ION  
UTILITY POLE  
RENDERINGS**

**Part Number:**

**001487**

- RENDERINGS:
- 1. INTERNAL STRUCTURAL COMPONENTS SHOWN IN DIFFERENT COLORS FOR CLARITY WITH EXTERNAL SURFACES TRANSPARENT.
  - 2. ASSEMBLED SECTION SHOWING THE METHOD FOR INSTALLING ION UNIT: WITH DOOR REMOVED, PULL OUT FRONT COVER FOAM AND SLIDE ION UP INSIDE THE POLE.
  - 3. ARRANGEMENT OF 4 ION MONOPOLE SECTIONS ON BASE WITH KATHREIN ANTENNA AT TOP.

COMPANY CONFIDENTIAL