

TREE DISPOSITION NOTES

TD100

TREES & PLANTING TO BE PRESERVED NOTES

- EXISTING TREES TO BE PRESERVED SHALL BEAR SAME RELATIONSHIP TO FINISHED GRADE AS THEY BEAR TO PRE-CONSTRUCTION GRADE.
- EXISTING TREES TO BE PRESERVED SHALL BE PROTECTED WITH STURDY, WEATHERPROOF FENCING AT A MINIMUM FOUR (4) FEET HEIGHT INSTALLED NO CLOSER TO THE TREE TRUNK THAN ITS DRIPLINE. THIS FENCE SHALL BE MAINTAINED IN WORKING ORDER DURING ALL PHASES OF CONSTRUCTION. MAINTAIN TREE PROTECTION ZONES FREE OF WEEDS AND TRASH.
- NO WORK SHALL BE CONDUCTED WITHIN THE DRIPLINE, UNLESS REVIEWED AND APPROVED BY THE LANDSCAPE ARCHITECT. ALL WORK APPROVED WITHIN THE DRIPLINE SHALL BE COMPLETED BY HAND. PROTECT ROOT SYSTEMS FROM PONDING, ERODING, OR EXCESSIVE WETTING.
- THE PROJECT LIMIT OF CONSTRUCTION AND ALL EXISTING VEGETATION TO REMAIN IS TO BE CLEARLY DEFINED BY STURDY, WEATHERPROOF FENCING AT A MINIMUM OF FOUR (4) FEET HIGH.

TREES & PLANTING TO BE RELOCATED NOTES

- THE CONTRACTOR IS TO ROOT PRUNE ALL PLANT MATERIAL 90 DAYS MINIMUM IN ADVANCE OF MOVING PLANT MATERIAL.
- THE CONTRACTOR IS TO WARRANTY ALL RELOCATED PLANT MATERIAL.
- THE CONTRACTOR IS RESPONSIBLE FOR THE WATERING AND FERTILIZING OF ALL PLANT RELOCATED PLANT MATERIAL UNTIL PROJECT COMPLETION.
- ALL RELOCATED PLANT MATERIAL IS TO BE APPROPRIATELY BRACED.
- CONTRACTOR TO NOTIFY LANDSCAPE ARCHITECT TWO WEEKS IN ADVANCE OF ALL SCHEDULED WORK PERTAINING TO THE RELOCATION OF SITE TREES.

TREES & PLANTING TO BE REMOVED NOTES

- THE CONTRACTOR IS TO COMPLETELY REMOVE ALL PLANTER MATERIAL DESIGNATED FOR REMOVAL (I.E. ROOT BALL, DEBRIS, SAW DUST, ETC.).
- THE CONTRACTOR IS TO BACKFILL ALL EXCAVATED ROOT BALLS FLUSH TO THE ADJACENT ELEVATION LEVEL.
- CONTRACTOR TO NOTIFY LANDSCAPE ARCHITECT TWO WEEKS IN ADVANCE OF ALL SCHEDULED WORK PERTAINING TO THE RELOCATION OF SITE TREES.

MITIGATION NOTES

- THE PROPOSED PLAN SPECIFIES THE REMOVAL OF 1123 SQUARE FEET OF CANOPY AREA. PER CITY OF MIAMI BEACH CODE OF ORDINANCES, CHAPTER 46, DIVISION 2.
- THE PLANTING IS BEYOND THE LIMIT OF WORK AND WITHIN THE RIGHT OF WAY, NO PROTECTION IS PROPOSED.

TREE PROTECTION NOTES

- PROTECTION FENCE SHALL BE GALVANIZED CHAIN LINK STANDARD 2"X2" MESH.
- PROVIDE HINGED GATE.
- ALTERNATE: 2X4 WOOD POSTS (6'-0" O.C. MAX) WITH THREE EVENLY SPACED WOODEN RAILS. MIN. HT 4'
- POSTS MAY BE SHIFTED TO AVOID ROOTS.
- NO STORAGE, DEBRIS, VEHICULAR TRAFFIC OR EQUIPMENT CLEANING IS ALLOWED WITHIN THE PROTECTED AREA.
- REFER TO MUNICIPAL REQUIREMENTS FOR ADDITIONAL INFORMATION.

DEFINITIONS

- TREE: ANY SELF-SUPPORTING WOODY PLANT OR PALM WHICH USUALLY HAS A SINGLE MAIN AXIS OR TRUNK, WITH A MINIMUM TRUNK DIAMETER AT BREAST HEIGHT OF TWO INCHES AND A MINIMUM OVERALL HEIGHT OF 12 FEET. THIS DEFINITION EXCLUDES PLANTS WHICH ARE DEFINED AS SHRUBS, HEDGES, VINES, OR GROUND COVERS. PALMS SHALL HAVE A MINIMUM HEIGHT OF 14 FEET IN ORDER TO BE CLASSIFIED AS A TREE. - CITY OF MIAMI BEACH CODE OF ORDINANCES, CHAPTER 46, DIVISION 2

PREPARATION AND DEMOLITION NOTES

GENERAL

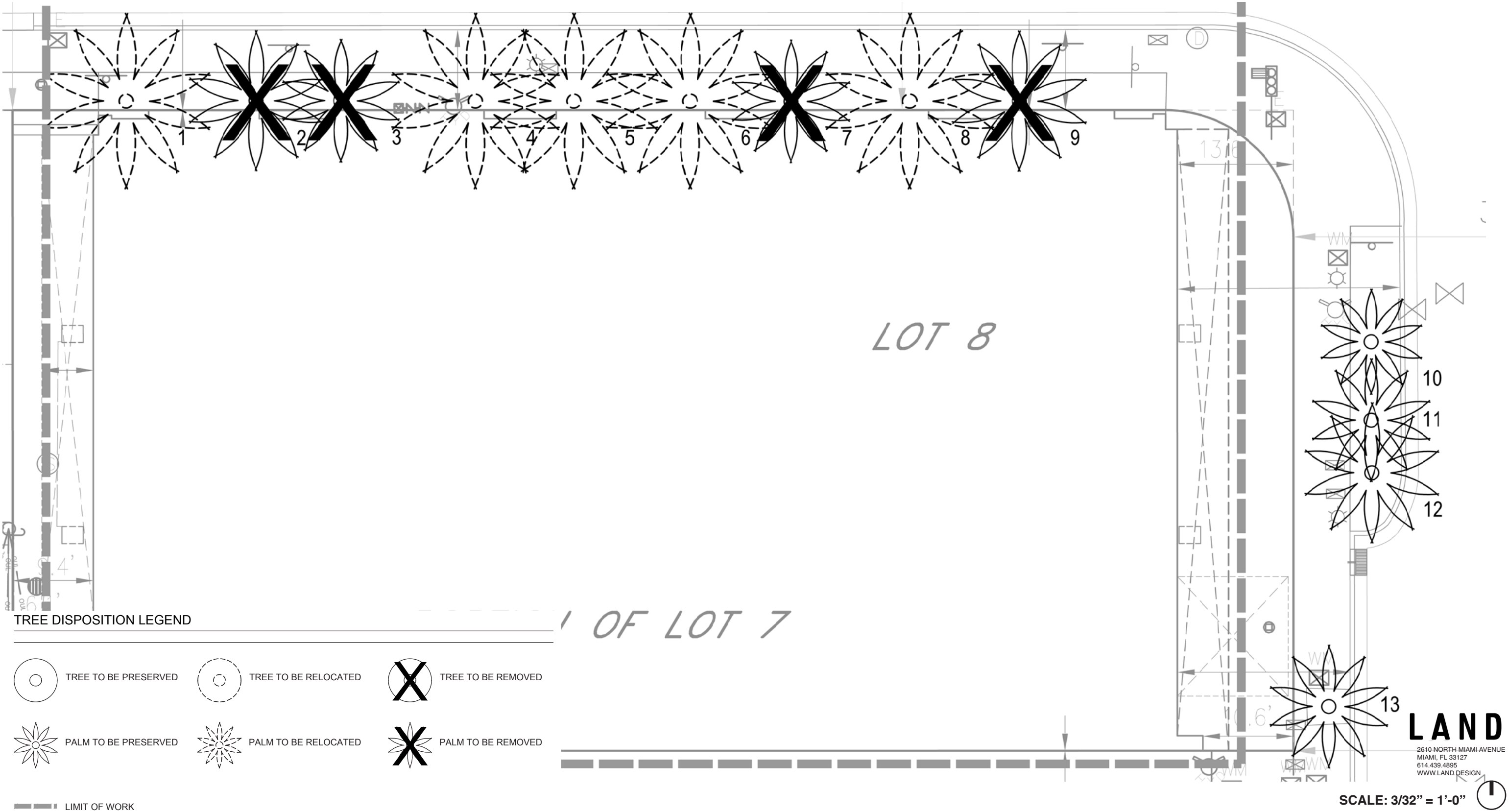
- PRIOR TO BEGINNING WORK, CONTRACTOR SHALL MEET WITH CLIENT AND LANDSCAPE ARCHITECT TO CONFIRM AREAS AND VEGETATION TO BE PROTECTED AND CLEARED.
- THE CONTRACTOR SHALL PROTECT TREES AND PALMS TO REMAIN BY THE INSTALLATION OF FENCING AT THE CANOPY DRIPLINE, UNLESS WORK IS BEING PERFORMED IN THAT ZONE. PARKING AND MATERIAL STORAGE WITHIN THE DRIPLINE IS FORBIDDEN. PROTECT TRUNKS OF ALL TREES AND PALMS AT ALL TIMES. PROTECT ALL OTHER PLANTING TO REMAIN WITH FENCING ONE FOOT BEYOND FACE OF FOLIAGE. INSTALL PROTECTION MEASURES AS DICTATED BY THE MOST STRINGENT APPLICABLE CODE. REFER TO TD SHEETS FOR ADDITIONAL INFORMATION.
- PROTECT ALL ADJACENT STRUCTURES, HARDSCAPE, PLANTING AND APPURTENANCES AS NECESSARY TO AVOID DAMAGE DURING CLEARING WORK. CONTRACTOR WILL BE RESPONSIBLE FOR ANY DAMAGE INCURRED BY HIS ACTIONS.
- PERFORM ALL DEMOLITION AND CLEARING WORK USING KNOWLEDGEABLE PERSONNEL IN A SAFE MANNER, FOLLOWING INDUSTRY STANDARD BEST PRACTICES. USE APPROPRIATE EQUIPMENT FOR ALL WORK.
- DISPOSE OF ALL DEMOLISHED AND CLEARED MATERIAL LEGALLY, OFF-SITE.
- ROOTS DAMAGED DURING CLEARING OR GRADING WORK SHALL BE PROTECTED AND KEPT MOIST AND COVERED UNTIL REBURIED. SHREDDED AND TORN ROOTS SHALL BE CUT CLEANLY.
- TREE AND SHRUB CLEARING SHALL INCLUDE THE REMOVAL OF ALL ROOTBALLS AND FILLING OF RESULTANT HOLES. REMOVE PAVING, BASINS, WALKWAYS, AND OTHER SITE ITEMS AS INDICATED ON THE DRAWING. DO NOT USE DEMOLITION DEBRIS FOR FILL.
- REMOVE ALL LIMEROCK BASE MATERIAL FROM ALL AREAS TO RECEIVE PLANTING.
- KEEP SITE CLEAN AND MINIMIZE DUST VIA WATER SPRAY AS NECESSARY AT ALL TIMES.

TREES DISPOSITION SCHEDULE

TREE No.	TREE - LATIN NAME	TREE - COMMON NAME	DIAMETER at BREAST HEIGHT (in inches) INC. CUM FOR MULTI	APPROXIMATE HEIGHT (in feet)	CANOPY DIAMETER (in feet)	CANOPY (in Sq. Ft.)	DISPOSITION	CONDITION	REMOVAL- MUNICIPAL CRITERIA AND NOTES	
									CRITERIA	CANOPY SQ. FT.
1	<i>Roystonea regia</i>	ROYAL PALM	18	45	20	314	RELOCATE	GOOD		
2	<i>Roystonea regia</i>	ROYAL PALM	15	25	16	201	REMOVE	FAIR		201
3	<i>Roystonea regia</i>	ROYAL PALM	14	32	20	314	REMOVE	FAIR		314
4	<i>Roystonea regia</i>	ROYAL PALM	18	35	20	314	RELOCATE	GOOD		
5	<i>Roystonea regia</i>	ROYAL PALM	18	35	20	314	RELOCATE	FAIR		
6	<i>Roystonea regia</i>	ROYAL PALM	16	38	25	491	RELOCATE	GOOD		
7	<i>Roystonea regia</i>	ROYAL PALM	14	20	15	177	REMOVE	POOR		177
8	<i>Roystonea regia</i>	ROYAL PALM	19	3	20	314	RELOCATE	GOOD		
9	<i>Roystonea regia</i>	ROYAL PALM	18	32	18	254	REMOVE	FAIR		254
10	<i>Cocos nucifera</i>	COCONUT PALM	8	28	15	177	REMAIN	FAIR		177
11	<i>Cocos nucifera</i>	COCONUT PALM	8	30	15	177	REMAIN	FAIR		
12	<i>Cocos nucifera</i>	COCONUT PALM	8	30	18	254	REMAIN	FAIR		
13	<i>Washingtonia robusta</i>	MEXICAN FAN PALM	14	45	12	113	REMAIN	GOOD		
REMOVAL TOTAL:										1123

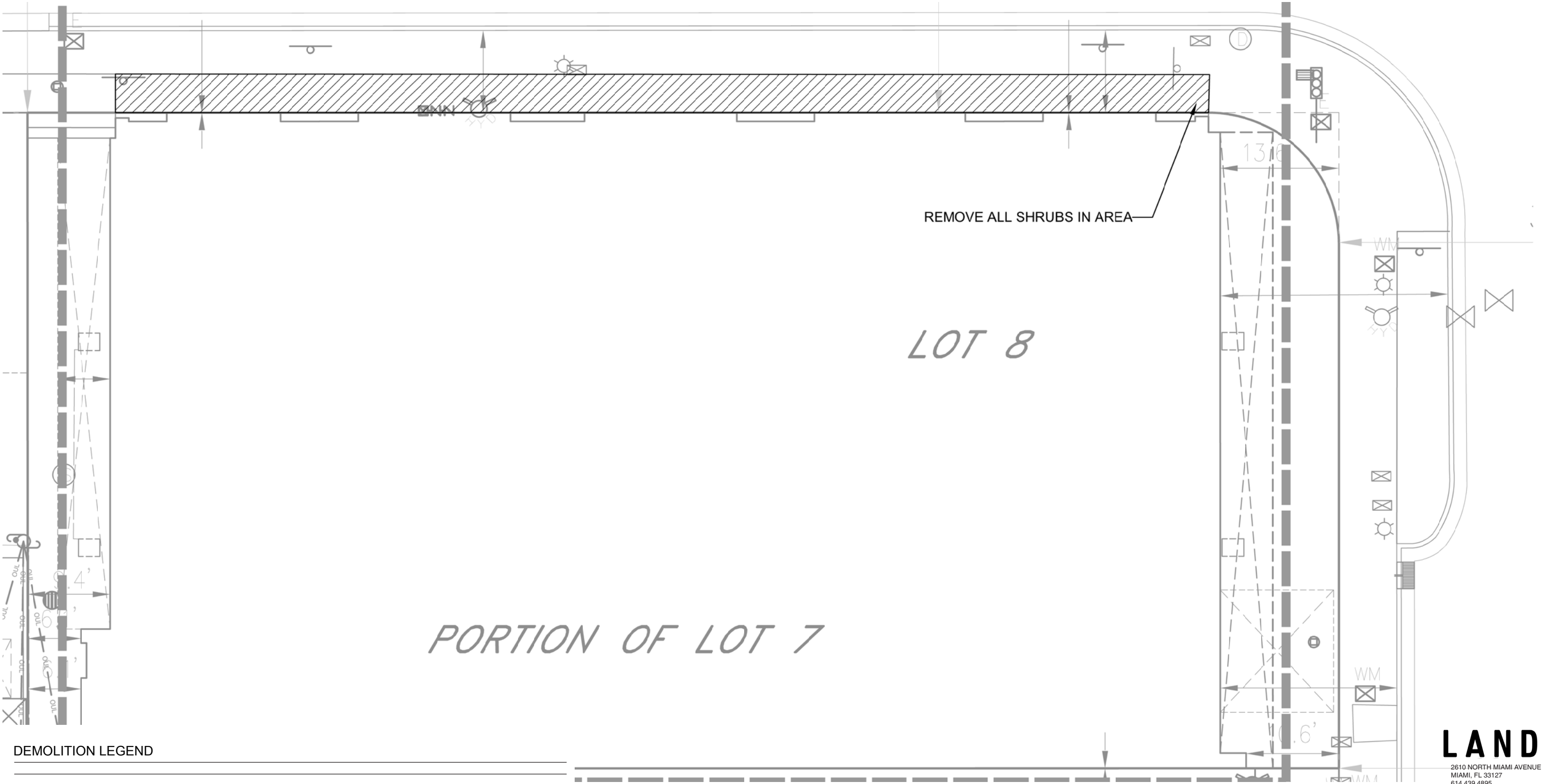
TREE DISPOSITION PLAN

TD101



DEMOLITION PLAN

TD102



PLANTING NOTES

L400

TRANSPLANTING NOTES

- GENERAL

ALL EXISTING PLANT MATERIAL TO REMAIN SHALL BE PROTECTED DURING ALL PHASES OF CONSTRUCTION. ANY PLANT MATERIAL SCARRED OR DESTROYED DESIGNATED "TO REMAIN" MUST BE REPLACED AT THE CONTRACTORS EXPENSE WITH SIMILAR SPECIES, SIZE AND QUANTITY.
1.

VERIFY AND INSURE ALL TREES/PALMS IDENTIFIED ON THE CONSTRUCTION DRAWINGS AND THOSE TAGGED IN THE FIELD CORRESPOND AS TO NUMBER AND DESCRIPTION. ANY DISCREPANCIES SHALL BE BROUGHT TO THE ATTENTION OF THE LANDSCAPE ARCHITECT IMMEDIATELY, PRIOR TO PREPARATION.
2.

LANDSCAPE CONTRACTOR SHALL BE RESPONSIBLE FOR TREE/PALM PROTECTION OF ALL VERIFIED MATERIAL. INSTALL BARRICADE OF GALVANIZED WELDED WIRE FABRIC OR PLASTIC MESH TO ENCOMPASS THE DRIPLINE OF THE TREE/PALM. BARRICADE TO BE REMOVED UPON COMPLETION OF BACKFILLING.
3.

BROAD LEAF TREE ROOT BALL SHALL BE ROOT PRUNED 50% (EQUALLY AROUND TREE) 60 DAYS PRIOR TO TRANSPLANT. THE REMAINING 50% TO BE PRUNED 30 DAYS PRIOR TO TRANSPLANTING.
4.

PALMS TO BE RELOCATED MAY BE IMMEDIATELY RELOCATED AFTER DIGGING.
5.

ROOTS TO BE PRUNED WITH CLEAN, SHARP TOOLS. ROOTS ONE (1) INCH AND LARGER IN DIAMETER SHALL BE NEATLY AND CLEANLY CUT WITH A HAND SAW OR OTHER APPROVED CUTTING IMPLEMENTATION. CLEAN TOOLS AFTER COMPLETION OF WORK ON EACH TREE
6.

LANDSCAPE CONTRACTOR TO APPLY MYCORRHIZA APPLICATION TO ROOTS DURING ROOT PRUNING AND DIGGING OPERATIONS. ALL PRUNING TO BE REVIEWED AND APPROVED BY LANDSCAPE ARCHITECT PRIOR TO PRUNING.
7.

DEAD WOOD, CROSSING BRANCHES, AND GENERAL CANOPY PRUNING SHALL BE PERFORMED BY THE LANDSCAPE CONTRACTOR IMMEDIATELY AFTER COMPLETION OF ROOT PRUNING OF EACH SPECIMEN TO BE RELOCATED. ALL PRUNING TO BE REVIEWED AND APPROVED BY LANDSCAPE ARCHITECT PRIOR TO PRUNING.
8.

ROOT BALL SIZE TABLE:

(NOTE: ROOT BALL SIZES SHALL EXCEED MINIMUM STANDARDS SET FORTH IN "GRADES AND STANDARDS FOR NURSERY PLANTS, PART II, PALMS AND TREES, FLORIDA DEPARTMENT OF AGRICULTURE")

TREE/PALM CALIPER	MINIMUM ROOT BALL DIAMETER
1" - 1 ½"	16"
1 ½" - 1 ¾"	20"
1 ¾" - 2"	24"
2" - 2 ½"	28"
2 ½" - 3 ½"	32"
3 ½" - 4"	36"
4" - 4 ½"	40"
4 ½" - 5"	44"
5" - 5 ½"	48"

THE ROOT BALL OF LARGER CALIPER SIZES SHALL BE INCREASED PROPORTIONALLY AT THREE (3) INCHES OF ROOT BALL DIAMETER FOR EVERY INCREASE OF ONE (1) INCH IN CALIPER OR FRACTION THEREOF.

9.

MAINTAIN COMPACT ROOT BALLS. ROOT BALLS SHALL BE COMPLETELY ENCLOSED WITHIN A BURLAP COVERING OR STRETCH WRAP AS COMMONLY USED WITHIN THE HORTICULTURAL INDUSTRY, IN TWO COMPLETE LAYERS (THICKNESS).
10.

ALL TREES TO BE FLOODED FOR FIVE (5) DAYS PRIOR TO TRANSPLANT.
11.

ALL PITS TO BE FILLED THE SAME DAY AND WITH CLEAN FILL IN 18 INCH LIFTS/LAYERS, EACH THEN COMPACTED BEFORE A SUBSEQUENT 18" LIFT/LAYER IS PLACED. REPEAT UNTIL BACKFILL IS FLUSH WITH SURROUNDING GRADE.
12.

CORRECT ALL PROBLEMS RELATED TO SETTLEMENT, EROSION, OR OTHER DISTRESS OF EXCAVATED/BACKFILLED PIT FROM WHICH TREE/PALM HAS BEEN REMOVED, INCLUDING THE COMPLETE AND THROUGH REMOVAL OF ALL RESIDUAL ROOTS, STUMPS AND PORTIONS AND PARTS THEREOF.
13.

RESTORE THE SURFACE WITH MATERIAL TO MATCH ADJACENT AREAS. MATERIAL TO BE APPROVED BY LANDSCAPE ARCHITECT. CONTRACTOR TO PROVIDE A MINIMUM ONE YEAR WARRANTY ON SETTLING AND PLANT MATERIAL.
14.

LANDSCAPE CONTRACTOR IS RESPONSIBLE FOR ALL MATERIAL INCLUDING BUT NOT EXCLUDED TO BACKFILL MATERIAL, PROTECTION FENCING, FLAGGING, ROOT BALL BURLAP OR SHRINK WRAP.

INSTALLATION

1.

VERIFY NO UNDERGROUND CONSTRUCTIONS OR OBSTRUCTION (UTILITIES, SEPTIC SYSTEMS, ETC.) ARE IDENTIFIED, LOCATED AND CLEARLY MARKED AS APPROPRIATE PRIOR TO EXCAVATION OF PLANTING PITS FOR RELOCATED TREES AND PALMS. ANY UNKNOWN OBJECTS SHALL BE BROUGHT TO THE ATTENTION OF THE LANDSCAPE ARCHITECT IMMEDIATELY, PRIOR TO INSTALLING AND BACKFILLING.
2.

LANDSCAPE CONTRACTOR TO FLAG ALL PROPOSED PLANT LOCATIONS FOR LANDSCAPE ARCHITECT'S APPROVAL PRIOR TO INSTALLATION.
3.

PLANTING PITS SHALL BE A MINIMUM OF TWO (2) TIMES LARGER IN DIAMETER AND ONE AND A HALF (1-1/2) TIMES LARGER IN DEPTH THAN THE ROOT BALL. ROUGHEN SIDES AND BOTTOM OF PIT.
4.

AFTER EACH PLANTING PIT IS EXCAVATED, PLACE SUFFICIENT PLANTING MIX IN BOTTOM OF EXCAVATION, AND SEAT PLANT, INSURING TOP OF ROOT BALL IS FLUSH WITH IMMEDIATELY ADJACENT TO FINAL OR PROPOSED GRADE.
5.

LANDSCAPE CONTRACTOR TO INSURE ALL PLANT MATERIAL IS INSTALLED AT THE CORRECT ELEVATION. REFER TO GRADING PLAN.
6.

LANDSCAPE CONTRACTOR TO INSURE ALL ROOT FLARES ARE EXPOSED.
7.

CENTER EACH RELOCATED TREE/PALM IN ITS PLANTING PIT IN HOLE AND BACKFILL WITH SPECIFIED PLANTING MIX.
8.

PLACE PLANTING MIX IN 12 INCH LIFTS/LAYERS AROUND ROOT BALL AND COMPACT UNTIL ALL VOIDS ARE FILLED WITH COMPACTED PLANTING MIX.
9.

BUILD SOIL SAUCER OF MOUNDED EXCAVATED SOIL AROUND PERIMETER OF EACH PLANTING PIT TO FORM WATERING BASIN. MULCH TO A DEPTH OF 3".

IRRIGATION NOTES

1.

FURNISH IRRIGATION SYSTEM FOR 100% OF NEWLY PLANTED AREAS DIVIDED INTO SEPARATELY CONTROLLED HYDROZONES AS FOLLOWS.
2.

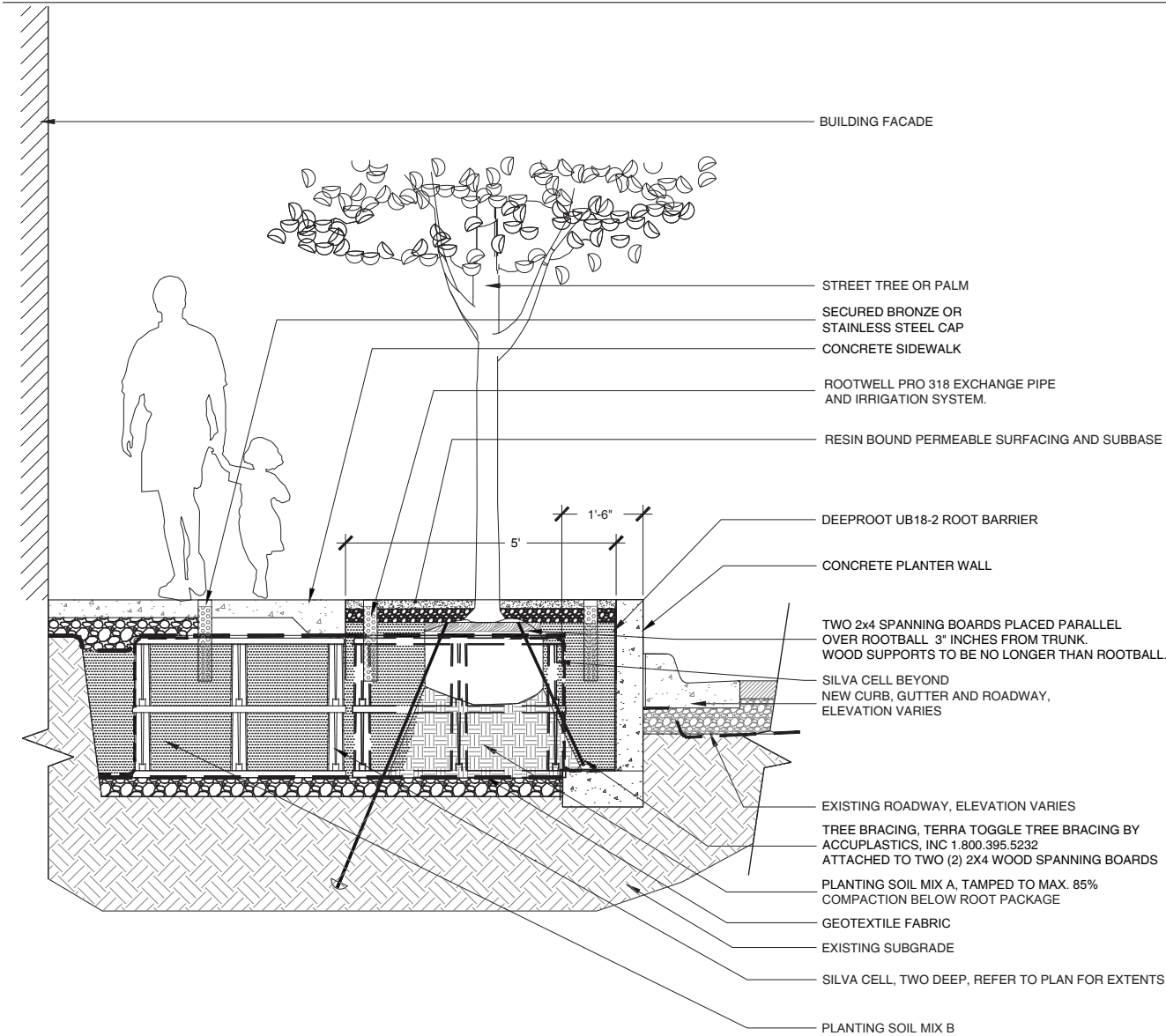
APPLICATION RATES: CONTRACTOR SHALL WATER THE NEWLY INSTALLED PLANT MATERIALS AT A RATE AND FREQUENCY SUFFICIENT TO PROVIDE FOR PLANT ESTABLISHMENT AS EVIDENCED BY NEW SHOOT GROWTH. WATERING SHALL BE AT APPLICATION RATES SUITABLE FOR PLANTS IN THEIR ESTABLISHMENT PERIOD. ALLOW SOIL TO DRY BETWEEN WATERING THEN WATER THOROUGHLY SO THAT THE ENTIRE ROOT BALL BECOMES MOIST. APPLICATION RATES SHALL BE ADJUSTED FOR EACH HYDROZONE
3.

DRIP IRRIGATION SYSTEM SHALL BE USED IN ALL NON-TURF HYDROZONES.

PALM TRANSPLANT SCHEDULE:

TREE No.	TREE - LATIN NAME	DISPOSITION
1	Roystonea regia	RELOCATE
2	Roystonea regia	REMOVE
3	Roystonea regia	REMOVE
4	Roystonea regia	RELOCATE
5	Roystonea regia	RELOCATE
6	Roystonea regia	RELOCATE
7	Roystonea regia	REMOVE
8	Roystonea regia	RELOCATE
9	Roystonea regia	REMOVE
10	Cocos nucifera	REMAIN
11	Cocos nucifera	REMAIN
12	Cocos nucifera	REMAIN
13	Washingtonia robusta	REMAIN

PLANTING DETAIL

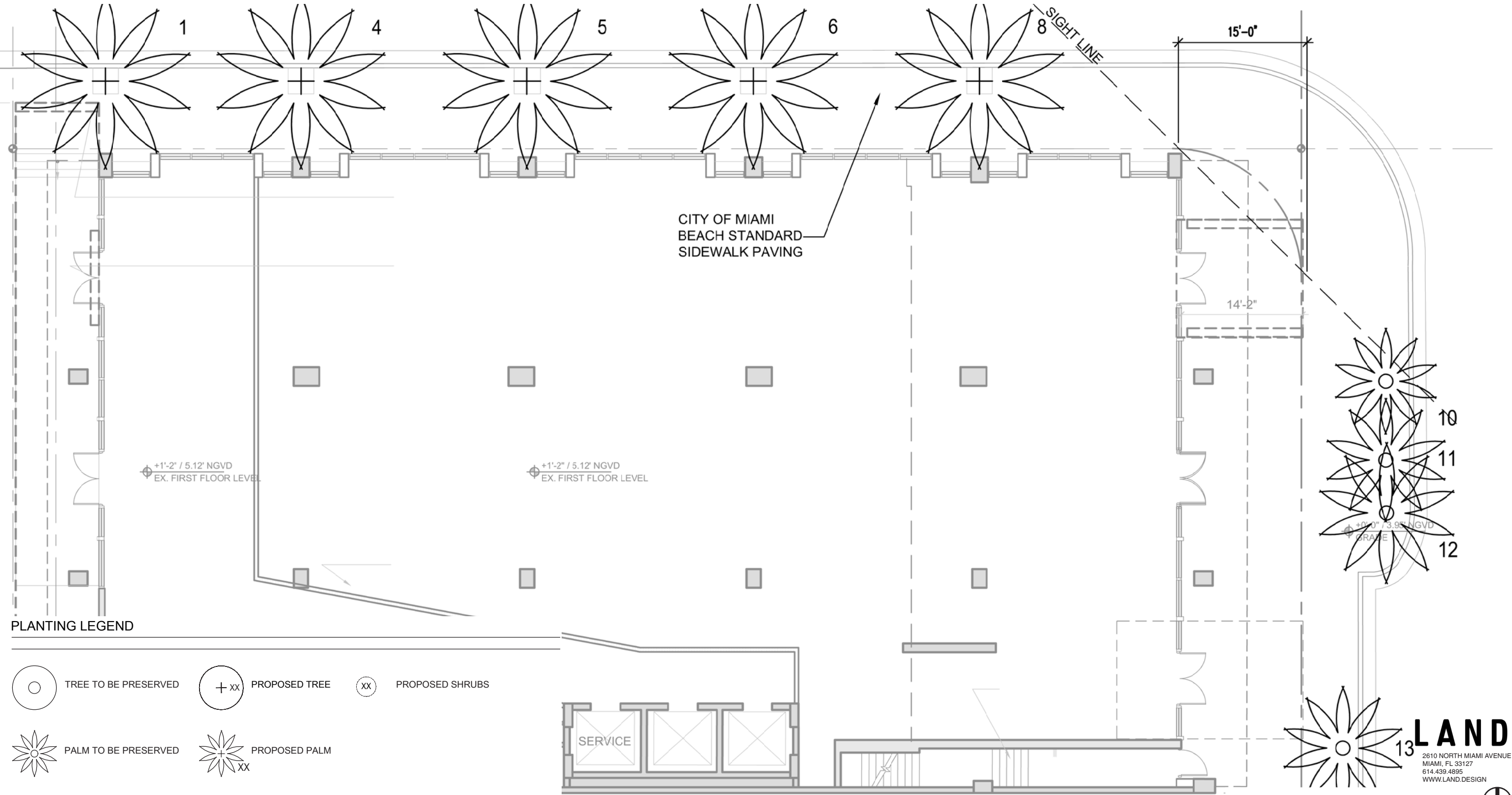


LAND

2610 NORTH MIAMI AVENUE
MIAMI, FL 33127
614.439.4895
WWW.LAND.DESIGN

PLANTING PLAN

L401



PLANTING LEGEND

- TREE TO BE PRESERVED
- PROPOSED TREE
- PROPOSED SHRUBS
- PALM TO BE PRESERVED
- PROPOSED PALM

13

LAND

2610 NORTH MIAMI AVENUE
MIAMI, FL 33127
614.439.4895
WWW.LAND.DESIGN

SCALE: 3/32" = 1'-0"