

5840 N BAY GARDEN

5840 N BAY ROAD | MIAMI BEACH, FLORIDA 33139

Handwritten signature and date: 03.05.2020

SEAL (S TYLER NIELSEN - LA6667067)



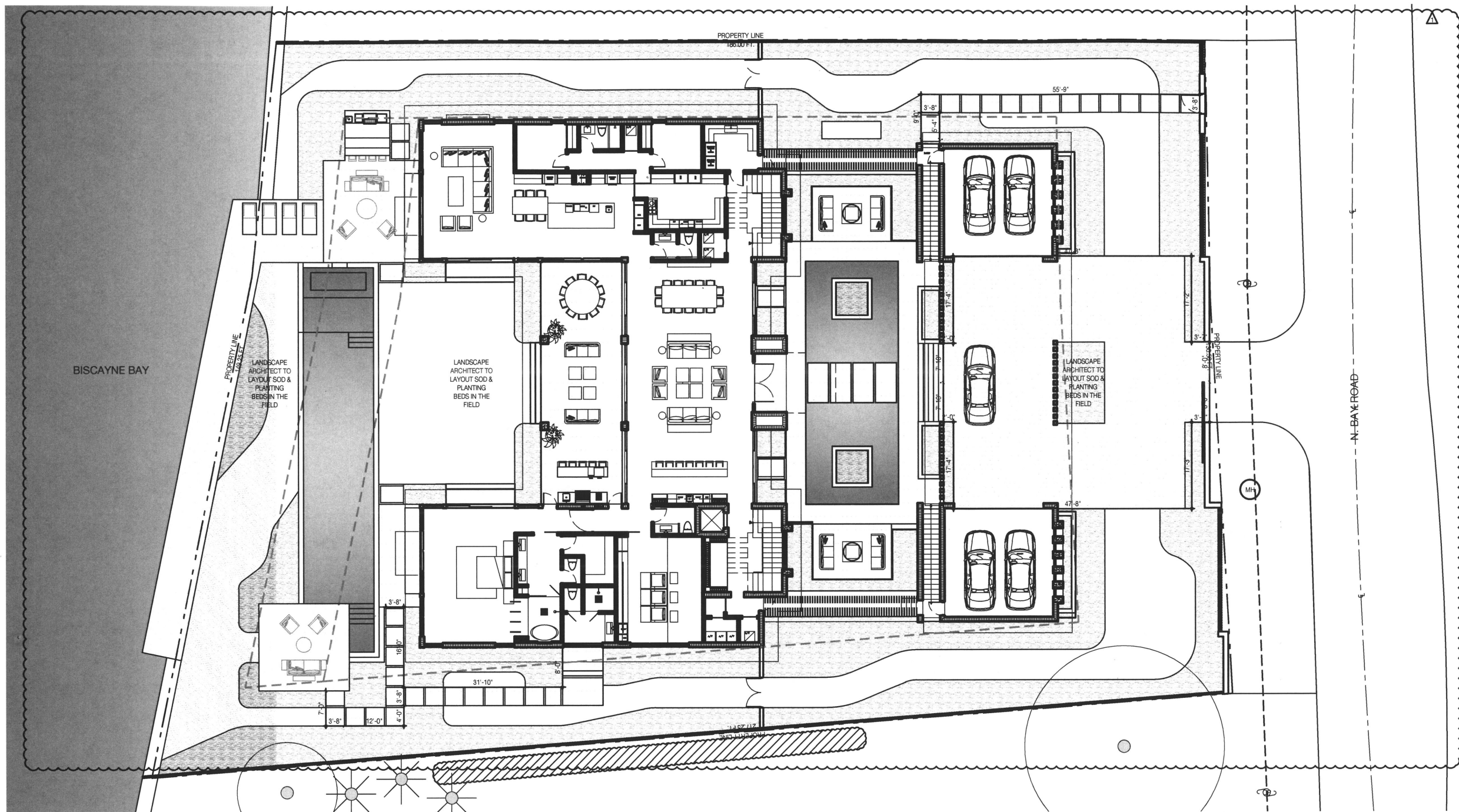
03.05.2020

LAYOUT PLAN	
DATE	ISSUE
02.17.2020	MB DRB REVIEW
03.05.2020	REVISION 01



L500

© COPYRIGHT NIELSEN LANDSCAPE ARCHITECTS, LLC



LAYOUT NOTES

1. LAYOUT AND VERIFY DIMENSIONS PRIOR TO CONSTRUCTION. NOTIFY LANDSCAPE ARCHITECT OF ANY DISCREPANCIES. LANDSCAPE ARCHITECT TO REVIEW AND APPROVE ALL LAYOUTS CONTAINED IN THE CONSTRUCTION DOCUMENTS PRIOR TO CONSTRUCTION.
2. WRITTEN DIMENSIONS SHALL TAKE PRECEDENCE OVER SCALED DIMENSIONS. DO NOT SCALE DIMENSIONS FROM REDUCED DRAWINGS.
3. DIMENSIONS REFERRED TO AS "EQUAL" INDICATE SPACING WHICH IS EQUIDISTANT MEASURED TO THE CENTERLINES.
4. MEASUREMENTS ARE TO THE FINISHED FACE OF BUILDINGS, WALLS, OR OTHER FIXED SITE IMPROVEMENTS. DIMENSIONS TO CENTERLINES ARE IDENTIFIED AS SUCH.
5. INSTALL INTERSECTING ELEMENTS AT 90-DEGREE ANGLES, UNLESS OTHERWISE INDICATED. MAINTAIN HORIZONTAL ALIGNMENT OF ADJACENT ELEMENTS AS INDICATED IN CONTRACT DOCUMENTS.
6. SPECIAL CONSIDERATION IS GIVEN TO THE DESIGN AND INTENDED RELATIONSHIP BETWEEN ARCHITECTURE, PLANTING AREAS AND PAVING SYSTEMS. PAVEMENT JOINTING, PAVERS, STONE, FINISHES AND GRADES HAVE BEEN STRICTLY COORDINATED IN THE CONTRACT DOCUMENTS. CONSTRUCTION OF THESE SYSTEMS SHALL BE STRICTLY COORDINATED.

PLANTING NOTES

1. PLANT MATERIAL IS TO BE HEALTHY SPECIMENS FREE FROM DISEASE OR DAMAGE, AND IS TO BE MAINTAINED IN EXCELLENT CONDITION WHILE ON THE JOBSITE. LANDSCAPE ARCHITECT SHALL INSPECT PLANT MATERIAL UPON ARRIVAL TO JOBSITE AND WILL REJECT PLANT MATERIAL THAT DOES NOT MEET THE STANDARDS DESCRIBED WITHIN THE CONTRACT DOCUMENTS.
2. THE LANDSCAPE ARCHITECT WILL PERIODICALLY INSPECT PLANT MATERIAL STOCKPILED AND/OR PLANTED ON SITE DURING THE COURSE OF CONSTRUCTION. PLANT MATERIAL NOT MEETING THE STANDARDS CONTAINED WITHIN CONTRACT DOCUMENTS SHALL BE REPLACED AT NO COST TO THE OWNER.
3. PROVIDE MATCHING SIZES AND FORMS FOR EACH PLANT OF THE SAME SPECIES UNLESS OTHERWISE INDICATED.
4. CONTRACTOR TO VERIFY ALL QUANTITIES. IN CASE OF DISCREPANCIES, GRAPHICALLY SHOWN QUANTITIES SHALL TAKE PRECEDENCE.
5. ALL MATERIALS USED SHALL CONFORM TO THE GUIDELINES ESTABLISHED BY THE CURRENT AMERICAN STANDARDS FOR NURSERY STOCK, PUBLISHED BY THE AMERICAN ASSOCIATION OF NURSERYMEN.
6. ALL PLANT MATERIAL SHALL BE INSTALLED PLUMB AND PER THE SPECIFICATIONS CONTAINED WITHIN THE CONTRACT DOCUMENTS. ANY NECESSARY STAKING AND/OR OTHER SUPPORTS MATERIALS/METHODS SHALL BE SUBMITTED TO THE LANDSCAPE ARCHITECT FOR REVIEW AND APPROVAL PRIOR TO INSTALLATION.
7. THE CONTRACTOR SHALL PRUNE EXISTING AND/OR NEW TREES ONLY PER LANDSCAPE ARCHITECT DIRECTION.
8. THE CONTRACTOR SHALL STAKE THE LOCATIONS OF ALL TREES AND B&B SHRUBS FOR LANDSCAPE ARCHITECT REVIEW AND APPROVAL, PRIOR TO INSTALLATION.
9. ALL ROOT-WRAPPING MATERIALS THAT ARE NOT BIO-DEGRADABLE SHALL BE REMOVED FROM THE ROOT BALL. ROOT BALLS SHALL BE FREE OF WEEDS.
10. SPECIFIED PLANT MATERIAL SIZES SHALL BE CONSIDERED MINIMUM SIZES.
11. FINISH GRADE OF PLANTING BEDS SHALL BE ONE (1) INCH BELOW ADJACENT FLATWORK, UNLESS SPECIFIED OTHERWISE.
12. MULCH OR PLANTING BED DRESSING SHALL BE PLACED IN ALL PLANTING AREAS AS SPECIFIED. MULCH OR PLANTING BED DRESSING SHALL NOT BE PLACED WITHIN SIX (6) INCHES OF TREE TRUNKS. MULCHING SHOULD BE REPEATED ANNUALLY DURING THE AUTUMN TO A THREE (3) INCH DEPTH.
13. ALL PLANT MATERIAL SHOULD RECEIVE AN ORGANIC FERTILIZER IN LIMITED APPLICATION FOLLOWING INSTALLATION. TYPE AND APPLICATION RATE AND METHOD OF APPLICATION TO BE SPECIFIED BY THE CONTRACTOR AND APPROVED BY THE LANDSCAPE ARCHITECT.
14. EXCESS FERTILIZER SHALL BE DISPOSED OF PROPERLY OFF-SITE. IT SHALL NOT BE DISPOSED OF IN STORM DRAINS AND/OR DRYWELLS.
15. STOCKPILED PLANT MATERIAL TO BE PLACED IN THE SHADE AND PROPERLY HAND-WATERED UNTIL PLANTED.
16. MINI-NUGGET TYPE DECORATIVE BARK MULCH WILL BE USED TO RETURN NUTRIENTS TO THE SOIL. REDUCE MAINTENANCE AND MINIMIZE EVAPORATION FOR AREAS APPROXIMATE TO THE RESIDENCE. LARGER SHREDDED BARK MULCH WILL BE USED FOR STEEP AREAS SO SLOUGHING IS LESS LIKELY TO OCCUR.
17. PRESERVE & PROTECT ALL EXISTING VEGETATION INDICATED TO REMAIN AT ALL TIMES.
18. ALL VEGETATION PROPOSED FOR OUTSIDE THE BUILDING ENVELOPE TO BE NATIVE UNLESS OTHERWISE NOTED. PLANTING THAT OCCURS OUTSIDE THE BUILDING ENVELOPE IS FOR RESTORATION PURPOSES ONLY OR IS SPECIFIC TO UTILITIES RESTORATION.
19. SIX (6) INCH PLANT MIX SHALL BE PROVIDED FOR ALL LAWN, TURF, AND NATIVE PLANTING ZONES. 18 INCH PLANT MIX SHALL BE PROVIDED FOR ALL PERENNIAL PLANTING BEDS UNLESS OTHERWISE NOTED.

CITY OF MIAMI BEACH LANDSCAPE LEGEND

CITY OF MIAMI BEACH LANDSCAPE LEGEND INFORMATION REQUIRED TO BE PROVIDED BY ALL BIDDING PLANS See my Decree: RS-3 for Area 27,541 Acres.			
OPEN SPACE		REQUIRED	PROVIDED
A. Square feet of required open space as indicated on site plan: Lot Area: 27,541 +/- = 08 +/- = 2,470 +/-		2,470	9,485
B. Square feet of parking for open space required as indicated on site plan: Number of parking spaces: NA x 10 +/- parking space =		NA	NA
C. Total square feet of landscaped open space required: A+B		2,470	9,485
LAWN AREA CALCULATION		2,102	14,172
B. Max. non-plant area (total) permitted: 50 +/- = 9,485		4,742.50	4,450
TREES			
A. Number of trees required per lot or net lot area, less existing number of trees: 27 +/- trees x NA net lot area = number of existing trees =		27	32
B. % Native trees required: Number of trees provided x 50% =		9	22
C. % Low-maintenance / drought and salt tolerant trees required: Number of trees provided x 50% =		14	32
D. Street Trees (minimum average spacing of 30' +/-): NA +/- trees feet along street divided by 30' =		NA	NA
E. Street tree species allowed: cypress, banyan, palm, etc. (minimum average spacing of 30' +/-): 130 +/- trees feet along street divided by 30' =		6	6
SHRUBS			
A. Number of shrubs required: Sum of lot and street trees required x 22 =		324	343
B. % Native shrubs required: Number of shrubs provided x 50% =		162	343
LARGE SHRUBS OR SMALL TREES			
A. Number of large shrubs or small trees required: Number of required shrubs x 50% =		33	33
B. % Native large shrubs or small trees required: Number of large shrubs or small trees provided x 50% =		17	33

PLANTING SCHEDULE

ABR.	QUANTITY	BOTANICAL NAME	COMMON NAME	SPECIFICATIONS
CUV	2	COCOLOBIA UVIFERA	SEA GRAPE	COLLECTED, 16 - 20 FT. OA. MULTI-TRUNK. PROVIDE IMAGES FOR LANDSCAPE ARCHITECT APPROVAL
CAL	2	CRESCENTIA ALATA	MEXICAN CALABASH	TWINS - 16 FT. OA. FG. 8 FT. SP. PROVIDE IMAGES FOR LANDSCAPE ARCHITECT APPROVAL
CDI	18	COCOLOBIA DIVERSIFOLIA	PIGEON PLUM TREE	FG. 4 IN. DBH 16 FT. OA HT. / PROVIDE IMAGES FOR LANDSCAPE ARCHITECT'S APPROVAL
CGR	6	CASALPINIA GRANDILLO	BRIDALVEIL TREE	100 GAL. 2 IN. DBH. 14 FT. OA. SINGLE LEADER STANDARD
GSP	8	GARCINIA SPICATA	MANGOSTEEN	45 GAL. 12 FT. OA. 2 IN. DBH. SINGLE LEADER STANDARD
PALMS				
CN1	10	COCOS NUCIFERA 'GREEN MALAYAN'	COCONUT PALM	CHARACTER CURVE / 9 FT. CT. / PROVIDE IMAGES FOR LANDSCAPE ARCHITECT'S APPROVAL
CN2	7	COCOS NUCIFERA 'GREEN MALAYAN'	COCONUT PALM	CHARACTER CURVE / 12 FT. CT. / PROVIDE IMAGES FOR LANDSCAPE ARCHITECT'S APPROVAL
11	10	COCOS NUCIFERA 'GREEN MALAYAN'	COCONUT PALM	CHARACTER CURVE / 16 FT. CT. / PROVIDE IMAGES FOR LANDSCAPE ARCHITECT'S APPROVAL
PSC	11	PTYCHOSPERMA SCHEFFERI	SAME	FG. 15 FT. OA. MULTI-TRUNK
PCO	7	PINANGA CORONATA	IVORY CANE PALM	45 GAL. MULTI-TRUNK 8 FT. OA.
RMA	2	RAVENALA MADAGASCARIENSIS	TRAVELERS PALM	65 GAL. MULTI-TRUNK 16 FT. OA.
LARGE SHRUBS				
SM	24	SURIANA MARITIMA	BAY CEDAR	25 GAL. 6 FT. OA.
CC	12	CAPPARIS CYNOPHALLOPHORA	JAMAICA CAPER	25 GAL. 6 FT. OA.
SHRUBS				
HC	110	CHRYSOBALANUS ICACO 'HORIZONTAL'	HORIZONTAL COCOPLUM	7 GAL. 24 IN. x 24 IN.
CE	138	CONOCARPUS ERECTUS	GREEN BUTTWOOD	15 GAL. FULL BUSH 6 FT. OA.
SP	80	SPARTINA PATENS	SALTMEADOW CHORDGRASS	3 GAL.
SS	15	SERENOA REPENS 'CINEREA'	SILVER SAW PALMETTO	25 GAL.
ACCENTS				
AE	260	ASPIDISTRIA ELATIOR	CAST IRON PLAN	3 GAL.
HR	28	HELICONIA ROSTRATA	LOBSTER CLAW	15 GAL. 6 FT. OA.
PM	14	PHILODENDRON MCDOWELL	SAME	7 GAL.
XX	100	ALCANTAREA ODORATA	SILVER BROMELIAD	7 GAL.
GROUNDCOVERS				
EL	2,180	ERNODEA LITTORALIS	GOLDEN CREEPER	1 GAL. 12 IN. OC.
VINES				
TG	42	THUNBERGIA GRANDIFLORA	SAME	3 GAL. TRELLIS
CONTRACTOR TO PROVIDE \$2000 MISCELLANEOUS WHOLESALE PLANT ALLOWANCE. LANDSCAPE ARCHITECT TO TAG PLANTS AT NURSERY				

PLANT REFERENCE IMAGES



MITIGATION NOTES

- THE PROPOSED LANDSCAPE PLAN MUST MITIGATE THE REMOVAL OF 67 DBH. INCHES OF TREES REMOVED WITH:
- (12) COCCOLOBA DIVERSIFOLIA - CDI
TREES 4 IN. DBH. x 8 FT. SPR. x 16 FT. HT.
SINGLE LEADER STANDARD
- THE PROPOSED LANDSCAPE PLAN MUST MITIGATE THE REMOVAL OF 8 PALMS WITH:
- (8) GARCINIA SPICATA - GSP
TREES 2 IN. DBH. x 12 FT. OA.
SINGLE LEADER STANDARD



5840 N BAY GARDEN
5840 N BAY ROAD | MIAMI BEACH, FLORIDA 33158

SEAL (S TYLER NIELSEN - LA1667067)



PLANTING SCHEDULE & NOTES
DATE: 02.17.2020
ISSUE: MB DRB REVIEW
03.05.2020 REVISION 01

L700

5840 N BAY GARDEN

5840 N BAY ROAD | MIAMI BEACH, FLORIDA 33139

Handwritten signature and date: 02.05.2020

SEAL (S TYLER NIELSEN - LA0667067)

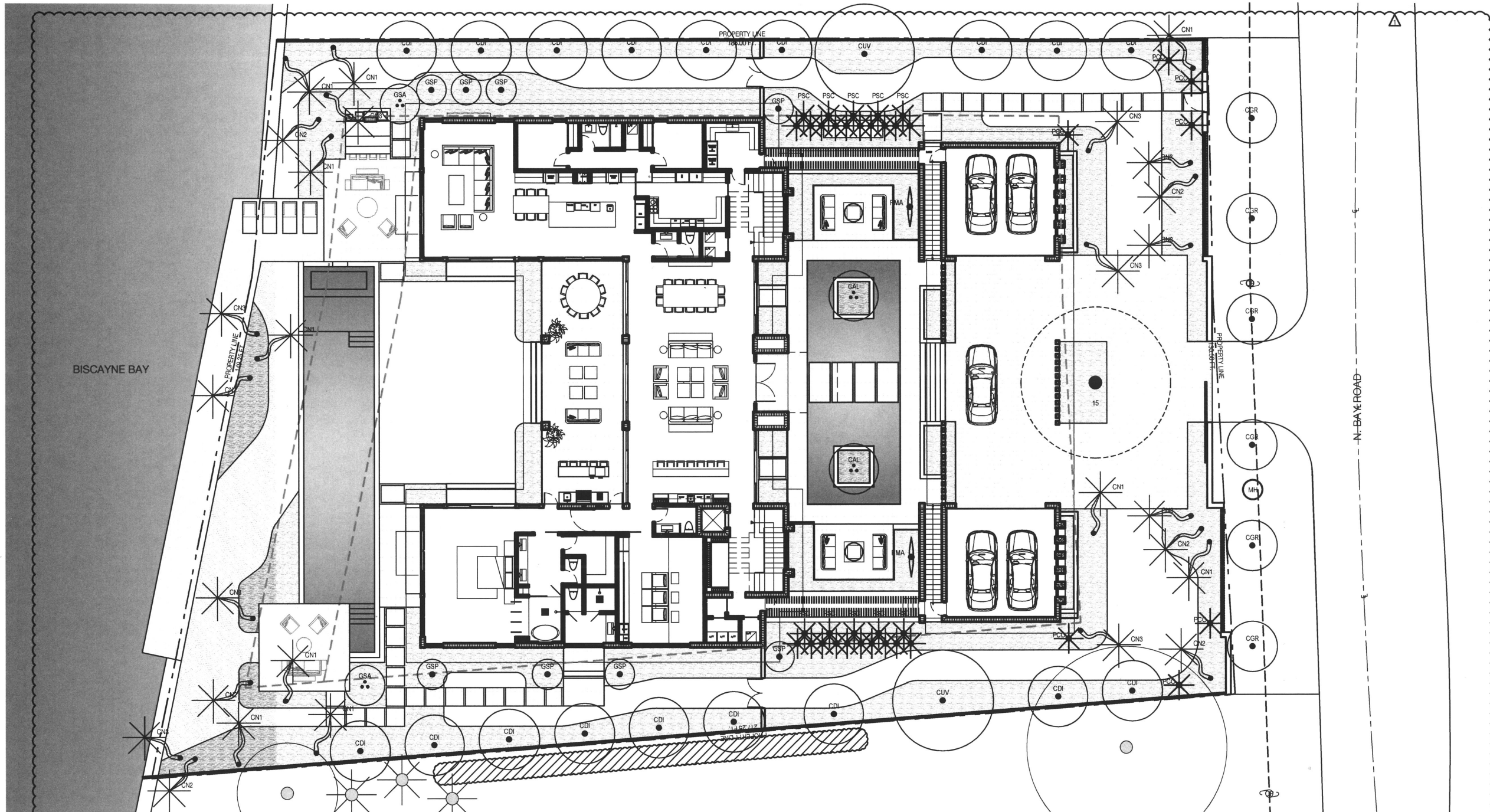


TREE & PALM PLANTING PLAN
DATE: 02.17.2020
ISSUE: MB DRB REVIEW
03.05.2020
REVISION: 01



L701

© COPYRIGHT NIELSEN LANDSCAPE ARCHITECTS, LLC



CITY OF MIAMI BEACH LANDSCAPE LEGEND

CITY OF MIAMI BEACH

LANDSCAPE LEGEND

ALL INFORMATION REQUIRED TO BE PERMANENTLY AFFIXED TO PLANS
Zoning District: RS-3 Lot Area: 27,541 Acres: .63

OPEN SPACE

	REQUIRED	PROPOSED
Square feet of proposed Open Space as indicated on site plan	2,470	9,485
Lot Area: 27,541 x .09 = 2,470 s.f.		
Square feet of parking for motor vehicles (as indicated on site plan)	NA	NA
Number of parking spaces: NA x 15 s.f. parking space =	NA	NA
Total square feet of landscaped open space required: As B	2,470	9,485

LAWN AREA CALCULATION

Square feet of landscaped open space required	2,102	14,172
Minimum lawn area (as required): 50 % = 9,485	4,742	5,450

TREES

Number of trees required per lot or net lot area, less existing number of trees, meeting site requirements:	27	32
27 trees x NA = 27 trees - net lot area - number of existing trees:	9	22
% of trees required: Number of trees provided x 100 =	14	32
% low maintenance / drought and salt tolerant required:	NA	NA
Number of trees provided x 100 =	NA	NA
Street trees (roadway average spacing of 20' o.c.)	NA	NA
Street trees (spec. along street) (roadway average spacing of 20' o.c.)	6	6

SHRUBS

Number of shrubs required: Sum of lot and street trees required x 12 =	324	343
% of shrubs required: Number of shrubs provided x 100 =	162	343

LAWN SPECIFICATIONS

Number of large shrubs or small trees required: Number of trees required x 100 =	33	33
% of shrubs or small trees required: Number of shrubs or small trees provided x 100 =	17	33

PLANTING SCHEDULE

ABR.	QUANTITY	BOTANICAL NAME	COMMON NAME	SPECIFICATIONS
CUV	2	COCCOLOBA UVIFERA	SEA GRAPE	COLLECTED, 16 - 20 FT. OA. MULTI-TRUNK. PROVIDE IMAGES FOR LANDSCAPE ARCHITECT APPROVAL
CAL	2	CRESCENTIA ALATA	MEXICAN CALABASH	TWINS - 16 FT. OA. FG. 8 FT. SP. PROVIDE IMAGES FOR LANDSCAPE ARCHITECT APPROVAL
CDI	18	COCCOLOBA DIVERSIFOLIA	PIGEON PLUM TREE	FG. 4 IN. DBH 16 FT. OA. HT. / PROVIDE IMAGES FOR LANDSCAPE ARCHITECT'S APPROVAL
CGR	6	CASALPINA GRANDILLO	BRIDALVEIL TREE	100 GAL. 2 IN. DBH. 14 FT. OA. SINGLE LEADER STANDARD
GSP	8	GARCINIA SPICATA	MANGOSTEEN	45 GAL. 12 FT. OA. 2 IN. DBH. SINGLE LEADER STANDARD
PALMS				
CN1	10	COCOS NUCIFERA 'GREEN MALAYAN'	COCONUT PALM	CHARACTER CURVE / 9 FT. CT. / PROVIDE IMAGES FOR LANDSCAPE ARCHITECT'S APPROVAL
CN2	7	COCOS NUCIFERA 'GREEN MALAYAN'	COCONUT PALM	CHARACTER CURVE / 12 FT. CT. / PROVIDE IMAGES FOR LANDSCAPE ARCHITECT'S APPROVAL
11	10	COCOS NUCIFERA 'GREEN MALAYAN'	COCONUT PALM	CHARACTER CURVE / 16 FT. CT. / PROVIDE IMAGES FOR LANDSCAPE ARCHITECT'S APPROVAL
PSC	11	PTYCHOSPERMA SCHEFFERI	SAME	FG. 15 FT. OA. MULTI-TRUNK
PCO	7	PINANGA CORONATA	IVORY CANE PALM	45 GAL. MULTI-TRUNK 8 FT. OA.
RMA	2	RAVENALA MADAGASCARIENSIS	TRAVELERS PALM	65 GAL. MULTI-TRUNK 16 FT. OA.

MITIGATION NOTES

THE PROPOSED LANDSCAPE PLAN MUST
MITIGATE THE REMOVAL OF 67 DBH. INCHES OF
TREES REMOVED WITH:

(12) COCCOLOBA DIVERSIFOLIA - CDI
TREES 4 IN. DBH. x 8 FT. SPR. x 16 FT. HT.
SINGLE LEADER STANDARD

THE PROPOSED LANDSCAPE PLAN MUST
MITIGATE THE REMOVAL OF 8 PALMS WITH:

(8) GARCINIA SPICATA - GSP
TREES 2 IN. DBH. x 12 FT. OA.
SINGLE LEADER STANDARD

PLANTING LEGEND

	PROPOSED PALM
	PROPOSED TREE
	PROPOSED SHRUB / ACCE
	PROPOSED VINE
	PROPOSED GROUND COVER

5840 N BAY GARDEN

5840 N BAY ROAD | MIAMI BEACH, FLORIDA 33139

Signature
03.05.2020

SEAL (S TYLER NIELSEN - LA6667007)

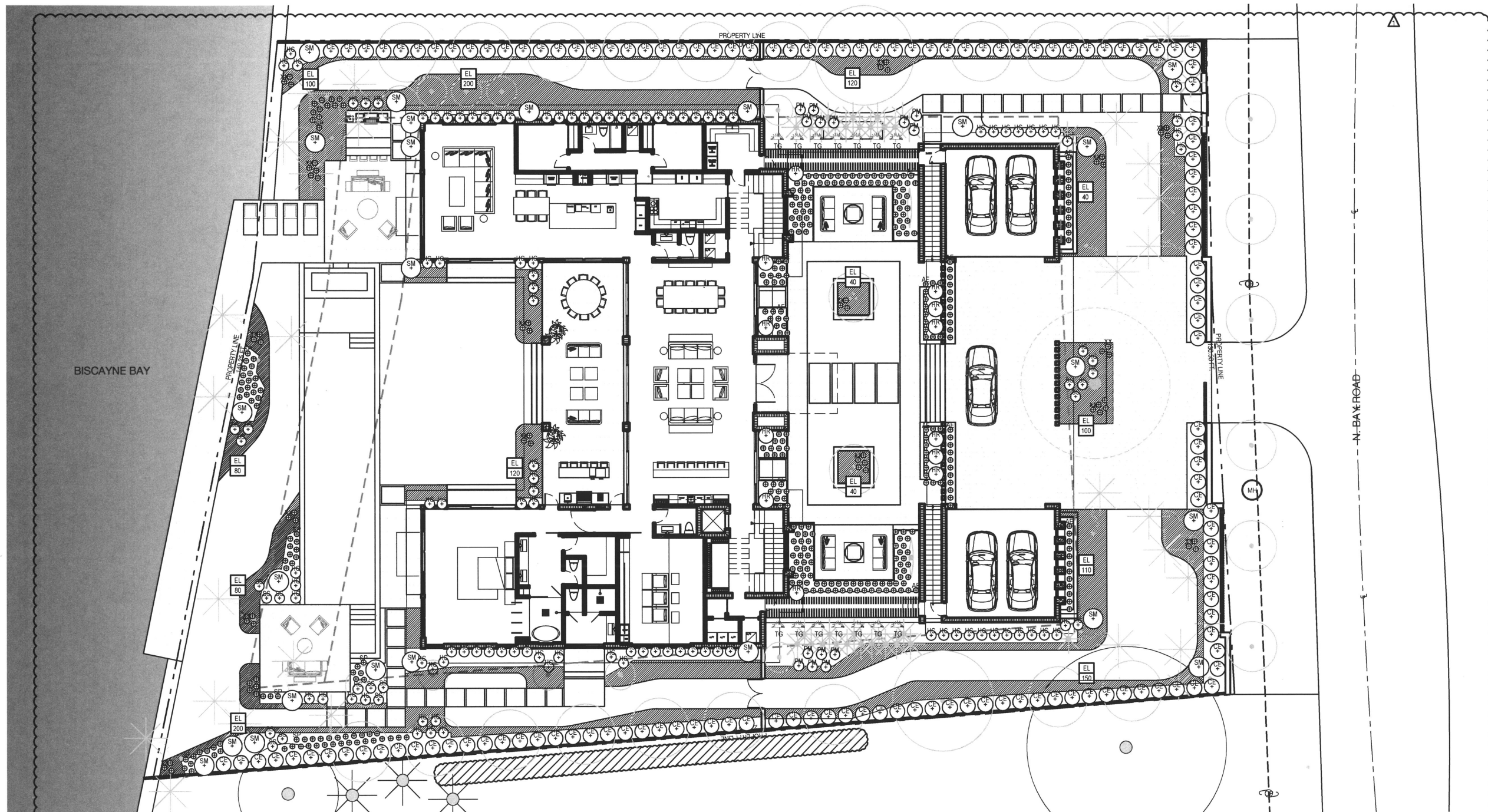


UNDERSTORY PLANTING PLAN
DATE: 02.17.2020
ISSUE: MB DRB REVIEW
03.05.2020 REVISION 01



L702

© COPYRIGHT NIELSEN LANDSCAPE ARCHITECTS, LLC



CITY OF MIAMI BEACH LANDSCAPE LEGEND

CITY OF MIAMI BEACH

LANDSCAPE LEGEND

INFORMATION REQUIRED TO BE PERMANENTLY AFFIXED TO PLANS
(For City of Miami Beach - RS-3) Lot Area: 27,541

Lot Area	27,541	63
Number of trees required per lot or net lot area, less existing number of trees (minimum 1 tree per 1,000 sq. ft. of lot area)	27	32
Number of shrubs required per lot or net lot area, less existing number of shrubs (minimum 1 shrub per 1,000 sq. ft. of lot area)	324	343
Number of vines required per lot or net lot area, less existing number of vines (minimum 1 vine per 1,000 sq. ft. of lot area)	162	343
Number of groundcovers required per lot or net lot area, less existing number of groundcovers (minimum 1 groundcover per 1,000 sq. ft. of lot area)	33	33
Number of accent plants required per lot or net lot area, less existing number of accent plants (minimum 1 accent plant per 1,000 sq. ft. of lot area)	17	33

PLANTING SCHEDULE

ABR	QUANTITY	BOTANICAL NAME	COMMON NAME	SPECIFICATIONS
LARGE SHRUBS				
SM	24	SURIANA MARITIMA	BAY CEDAR	25 GAL. 6 FT. OA.
CC	12	CAPPARIS CYNOPHALLOPHORA	JAMAICA CAPER	25 GAL. 6 FT. OA.
SHRUBS				
HC	110	CHRYSOBALANUS ICACO 'HORIZONTAL'	HORIZONTAL COCOPLUM	7 GAL. 24 IN. x 24 IN.
CE	138	CONOCARPUS ERECTUS	GREEN BUTTWOOD	15 GAL. FULL BUSH 6 FT. OA.
SP	80	SPARTINA PATENS	SALTMEADOW CHORDGRASS	3 GAL.
SS	15	SERENOA REPENS 'CINEREA'	SILVER SAW PALMETTO	25 GAL.
ACCENTS				
AE	260	ASPIDISTRIA ELATIOR	CAST IRON PLANT	3 GAL.
HR	28	HELICONIA ROSTRATA	LOBSTER CLAW	15 GAL. 6 FT. OA.
PM	14	PHILODENDRON MCDOWELL	SAME	7 GAL.
XX	100	ALCANTAREA ODORATA	SILVER BROMELIAD	7 GAL.
GROUNDCOVERS				
EL	2,180	ERNODEA LITTORALIS	GOLDEN CREEPER	1 GAL. 12 IN. OC.
VINES				
TG	42	THUNBERGIA GRANDIFLORA	SAME	3 GAL. TRELLIS

CONTRACTOR TO PROVIDE \$2000 MISCELLANEOUS WHOLESALE PLANT ALLOWANCE. LANDSCAPE ARCHITECT TO TAG PLANTS AT NURSERY

PLANTING LEGEND

