

1745 JAMES AVENUE
MIAMI BEACH, FLORIDA 33430

Revisions

Owner Information

1745 JAMES LLC

1111 Kane Concourse
Bay Harbor Islands, Florida
33140

(305) 763-8166

Consultant

DAVID O. INC.

LANDSCAPE ARCHITECTURE
2686 SW 28TH LN

2686 SW 28TH LN
MIAMI, FL 33133

P: 305.854.9299 || F: 305.854.9882

WWW.DAVIDODISHOO.COM



David J. Odishoo

RLA-6666969

HPB FINAL SUBMITTAL

Date _____

3/09/2020

Scale

AS SHOWN

Project No.

20002

Sheet Name

EXISTING TREE DISPOSITION PLAN

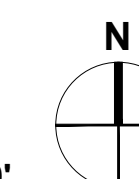
Sheet No

Sheet No. **100**

LR-100

EXISTING TREE DISPOSITION PLAN

SCALE: 1/8" = 1'-0"



These Design And Drawings Are The Copyrights Property Of Revuelta Architecture International, P.A. and May Not Be Reproduced Except with Specific Written Consent of the Architect.
File: Bldg0001-PAU - BIM Server: 1 - Bldg0001 Base for ARCHICAD 22/1922 - SANCTUARY HOTEL 04 UNITS - By # and saved by: Date: 2/1/2020

NOT FOR CONSTRUCTION

EXISTING TREE DISPOSITION SCHEDULE									
TREE No.	COMMON NAME	BOTANICAL NAME	DBH (IN.)	HT (FT.)	SP. (FT.)	CONDITION	T.P.Z (FT)	C.R.Z (FT)	DISPOSITION
1	Christmas Palm	<i>Adonidia merillii</i>	6	9	-	Poor	n/a	n/a	Remove
2	Bottle Palm	<i>Hyophorbe lagenicaulis</i>	-	6 wd.	13	Poor	n/a	n/a	Remove
3	Green Buttonwood	<i>Conocarpus erectus</i>	12	25	25	Good	16	12	Remain - Street Tree
4	Pink Tabebuia	<i>Tabebuia rosea</i>	9	20	12	Good	5	5	Remain - Street Tree
5	Bulnesia	<i>Bulnesia arborea</i>	6	20	15	Good	5	5	Remain - Street Tree
6	Green Buttonwood	<i>Conocarpus erectus</i>	12	25	22	Good	16	12	Remain - Street Tree
7	Bottle Palm	<i>Hyophorbe lagenicaulis</i>	-	6 wd.	13	Poor	n/a	n/a	Remove
8	<i>Palm Species T.B.D.</i>		10	12	12	Poor	n/a	n/a	Remove
9	<i>Palm Species T.B.D.</i>		11	20	12	Poor	n/a	n/a	Remove
10	Weeping Fig	<i>Ficus benjamina</i>	6 - 9	20	10	Poor	n/a	n/a	Remove
11	Weeping Fig	<i>Ficus benjamina</i>	6 - 9	20	10	Poor	n/a	n/a	Remove
12	Weeping Fig	<i>Ficus benjamina</i>	6 - 9	20	10	Poor	n/a	n/a	Remove
13	White Bird of Paradise	<i>Strelitzia nicolai</i>	6 - 9	35	10	Poor	n/a	n/a	Remove
14	White Bird of Paradise	<i>Strelitzia nicolai</i>	6 - 9	35	10	Poor	n/a	n/a	Remove
15	White Bird of Paradise	<i>Strelitzia nicolai</i>	6 - 9	35	10	Poor	n/a	n/a	Remove
16	White Bird of Paradise	<i>Strelitzia nicolai</i>	6 - 9	35	10	Poor	n/a	n/a	Remove
17	White Bird of Paradise	<i>Strelitzia nicolai</i>	6 - 9	35	10	Poor	n/a	n/a	Remove
18	White Bird of Paradise	<i>Strelitzia nicolai</i>	6 - 9	35	10	Poor	n/a	n/a	Remove
19	White Bird of Paradise	<i>Strelitzia nicolai</i>	6 - 9	35	10	Poor	n/a	n/a	Remove
20	White Bird of Paradise	<i>Strelitzia nicolai</i>	6 - 9	35	10	Poor	n/a	n/a	Remove
21	White Bird of Paradise	<i>Strelitzia nicolai</i>	6 - 9	35	10	Poor	n/a	n/a	Remove
22	White Bird of Paradise	<i>Strelitzia nicolai</i>	6 - 9	35	10	Poor	n/a	n/a	Remove
23	White Bird of Paradise	<i>Strelitzia nicolai</i>	6 - 9	35	10	Poor	n/a	n/a	Remove
24	White Bird of Paradise	<i>Strelitzia nicolai</i>	6 - 9	35	10	Poor	n/a	n/a	Remove
25	White Bird of Paradise	<i>Strelitzia nicolai</i>	6 - 9	35	10	Poor	n/a	n/a	Remove
26	<i>Palm Species T.B.D.</i>		10	12	8	Poor	n/a	n/a	Remove
27	<i>Ficus Tree Species T.B.D.</i>		24	23	16	Poor	n/a	n/a	Remove
28	White Bird of Paradise	<i>Strelitzia nicolai</i>	6 - 9	35	10	Poor	n/a	n/a	Remove
29	White Bird of Paradise	<i>Strelitzia nicolai</i>	6 - 9	35	10	Poor	n/a	n/a	Remove
30	White Bird of Paradise	<i>Strelitzia nicolai</i>	6 - 9	35	10	Poor	n/a	n/a	Remove
31	White Bird of Paradise	<i>Strelitzia nicolai</i>	6 - 9	35	10	Poor	n/a	n/a	Remove
32	White Bird of Paradise	<i>Strelitzia nicolai</i>	6 - 9	35	10	Poor	n/a	n/a	Remove
33	White Bird of Paradise	<i>Strelitzia nicolai</i>	6 - 9	35	10	Poor	n/a	n/a	Remove
34	White Bird of Paradise	<i>Strelitzia nicolai</i>	6 - 9	35	10	Poor	n/a	n/a	Remove
35	White Bird of Paradise	<i>Strelitzia nicolai</i>	6 - 9	35	10	Poor	n/a	n/a	Remove
36	White Bird of Paradise	<i>Strelitzia nicolai</i>	6 - 9	35	10	Poor	n/a	n/a	Remove
37	White Bird of Paradise	<i>Strelitzia nicolai</i>	6 - 9	35	10	Poor	n/a	n/a	Remove
38	White Bird of Paradise	<i>Strelitzia nicolai</i>	6 - 9	35	10	Poor	n/a	n/a	Remove
39	White Bird of Paradise	<i>Strelitzia nicolai</i>	6 - 9	35	10	Poor	n/a	n/a	Remove
40	White Bird of Paradise	<i>Strelitzia nicolai</i>	6 - 9	35	10	Poor	n/a	n/a	Remove
41	White Bird of Paradise	<i>Strelitzia nicolai</i>	6 - 9	35	10	Poor	n/a	n/a	Remove
42	White Bird of Paradise	<i>Strelitzia nicolai</i>	6 - 9	35	10	Poor	n/a	n/a	Remove
43	White Bird of Paradise	<i>Strelitzia nicolai</i>	6 - 9	35	10	Poor	n/a	n/a	Remove
44	White Bird of Paradise	<i>Strelitzia nicolai</i>	6 - 9	35	10	Poor	n/a	n/a	Remove
45	White Bird of Paradise	<i>Strelitzia nicolai</i>	6 - 9	35	10	Poor	n/a	n/a	Remove
46	White Bird of Paradise	<i>Strelitzia nicolai</i>	6 - 9	35	10	Poor	n/a	n/a	Remove
47	White Bird of Paradise	<i>Strelitzia nicolai</i>	6 - 9	35	10	Poor	n/a	n/a	Remove
48	Montgomery Palm	<i>Veitchia montgomeryana</i>	6	30	8	Poor	n/a	n/a	Remove
49	Bamboo	<i>Bambusa textilis gracilis</i>	20-25 culms	30 - 35	-	Poor	n/a	n/a	Remove
50	Bamboo	<i>Bambusa textilis gracilis</i>	20-25 culms	30 - 35	-	Poor	n/a	n/a	Remove
51	Bamboo	<i>Bambusa textilis gracilis</i>	20-25 culms	30 - 35	-	Poor	n/a	n/a	Remove

EXISTING TREES TO BE REMOVED SCHEDULE						
TREE No.	COMMON NAME	BOTANICAL NAME	DBH (IN)	HT (FT)	CANOPY SPREAD DIAMETER (FT)	CANOPY SPREAD AREA (SF)
1	Christmas Palm	<i>Adonidia merillii</i>	6	9	-	
2	Bottle Palm	<i>Hyophorbe lagenicaulis</i>	-	6 wd.	13	132.73
7	Bottle Palm	<i>Hyophorbe lagenicaulis</i>	-	6 wd.	13	132.73
8	<i>Palm Species T.B.D.</i>		10	12	12	113.10
9	<i>Palm Species T.B.D.</i>		11	20	12	113.10
10	Weeping Fig	<i>Ficus benjamina</i>	6 - 9	20	10	n/a
11	Weeping Fig	<i>Ficus benjamina</i>	6 - 9	20	10	n/a
12	Weeping Fig	<i>Ficus benjamina</i>	6 - 9	20	10	n/a
13	White Bird of Paradise	<i>Strelitzia nicolai</i>	6 - 9	35	10	n/a
14	White Bird of Paradise	<i>Strelitzia nicolai</i>	6 - 9	35	10	n/a
15	White Bird of Paradise	<i>Strelitzia nicolai</i>	6 - 9	35	10	n/a
16	White Bird of Paradise	<i>Strelitzia nicolai</i>	6 - 9	35	10	n/a
17	White Bird of Paradise	<i>Strelitzia nicolai</i>	6 - 9	35	10	n/a
18	White Bird of Paradise	<i>Strelitzia nicolai</i>	6 - 9	35	10	n/a
19	White Bird of Paradise	<i>Strelitzia nicolai</i>	6 - 9	35	10	n/a
20	White Bird of Paradise	<i>Strelitzia nicolai</i>	6 - 9	35	10	n/a
21	White Bird of Paradise	<i>Strelitzia nicolai</i>	6 - 9	35	10	n/a
22	White Bird of Paradise	<i>Strelitzia nicolai</i>	6 - 9	35	10	n/a
23	White Bird of Paradise	<i>Strelitzia nicolai</i>	6 - 9	35	10	n/a
24	White Bird of Paradise	<i>Strelitzia nicolai</i>	6 - 9	35	10	n/a
25	White Bird of Paradise	<i>Strelitzia nicolai</i>	6 - 9	35	10	n/a
26	<i>Palm Species T.B.D.</i>		10	12	8	50.27
27	<i>Ficus Tree Species T.B.D.</i>		24	23	16	201.06
28	White Bird of Paradise	<i>Strelitzia nicolai</i>	6 - 9	35	10	n/a
29	White Bird of Paradise	<i>Strelitzia nicolai</i>	6 - 9	35	10	n/a
30	White Bird of Paradise	<i>Strelitzia nicolai</i>	6 - 9	35	10	n/a
31	White Bird of Paradise	<i>Strelitzia nicolai</i>	6 - 9	35	10	n/a
32	White Bird of Paradise	<i>Strelitzia nicolai</i>	6 - 9	35	10	n/a
33	White Bird of Paradise	<i>Strelitzia nicolai</i>	6 - 9	35	10	n/a
34	White Bird of Paradise	<i>Strelitzia nicolai</i>	6 - 9	35	10	n/a
35	White Bird of Paradise	<i>Strelitzia nicolai</i>	6 - 9	35	10	n/a
36	White Bird of Paradise	<i>Strelitzia nicolai</i>	6 - 9	35	10	n/a
37	White Bird of Paradise	<i>Strelitzia nicolai</i>	6 - 9	35	10	n/a
38	White Bird of Paradise	<i>Strelitzia nicolai</i>	6 - 9	35	10	n/a
39	White Bird of Paradise	<i>Strelitzia nicolai</i>	6 - 9	35	10	n/a
40	White Bird of Paradise	<i>Strelitzia nicolai</i>	6 - 9	35	10	n/a
41	White Bird of Paradise	<i>Strelitzia nicolai</i>	6 - 9	35	10	n/a
42	White Bird of Paradise	<i>Strelitzia nicolai</i>	6 - 9	35	10	n/a
43	White Bird of Paradise	<i>Strelitzia nicolai</i>	6 - 9	35	10	n/a
44	White Bird of Paradise	<i>Strelitzia nicolai</i>	6 - 9	35	10	n/a
45	White Bird of Paradise	<i>Strelitzia nicolai</i>	6 - 9	35	10	n/a
46	White Bird of Paradise	<i>Strelitzia nicolai</i>	6 - 9	35	10	n/a
47	White Bird of Paradise	<i>Strelitzia nicolai</i>	6 - 9	35	10	n/a
48	Montgomery Palm	<i>Veitchia montgomeryana</i>	6	30	8	50.27
49	Bamboo	<i>Bambusa textilis gracilis</i>	20-25 culms	30 - 35	-	n/a
50	Bamboo	<i>Bambusa textilis gracilis</i>	20-25 culms	30 - 35	-	n/a
51	Bamboo	<i>Bambusa textilis gracilis</i>	20-25 culms	30 - 35	-	n/a
Canopy Area Credit Removed =						793.25

PROPOSED TREES AND PALMS SCHEDULE				
TREES & PALMS				
Native	Qty	Botanical/Common Name	Specifications	Replacement Tree Category Canopy Credit (S.F.)
N	1	<i>Bulnesia arborea</i> Verawood	12'-14' Ht. x 10'-12' Sp., Field Grown (R.O.W. Tree) 3"-4" Caliper (See General Note #1 Below)	Category 1 (300 S.F.) 300
Y	2	<i>Bursera simaruba</i> Gumbo Limbo	16'-0" Ht. x 12'-0" Sp. (Specimens) 3"-4" Caliper (See General Note #1 Below)	Category 1 (300 S.F.) 600
N	1	<i>Caesalpinia granadillo</i> Bridalveil Tree	12'-14' Ht. x 10'-12' Sp., Field Grown 3"-4" Caliper (See General Note #1 Below)	Category 1 (300 S.F.) 300
Y	4	<i>Chrysophyllum oliviforme</i> Satinleaf Tree	12'-14' Ht. x 10'-12' Sp., Field Grown 3"-4" Caliper (See General Note #1 Below)	Category 1 (300 S.F.) 1200
N	5	<i>Dyopsis cabadae</i> Cabada Palm	10'-12' Wd. Ht., 3 Trunks Each Cluster 3" Caliper each trunk (See General Note #1 Below)	Category 4 (50 S.F.) 250
Y	3	<i>Krugiodendron ferreum</i> Black Ironwood Tree	12'-14' Ht. x 10'-12' Sp., Field Grown 3"-4" Caliper (See General Note #1 Below)	Category 1 (300 S.F.) 900
Y	4	<i>Myrcianthes fragrans</i> Simpson Stopper Tree	12'-14' Ht. x 8'-10' Sp. (Specimens) 2"-3" Caliper (See General Note #1 Below)	Category 1 (300 S.F.) 1200
Y	21	<i>Sabal palmetto</i> Cabbage Palm	12'-0" to 16'-0" Clear Wood Ht. x 6'-0" Sp., (6) Curved Trunks & (15) Booted Trunks, (See General Note #1 Below)	Category 4 (50 S.F.) 1050
Canopy Area Credit Proposed =				5800
General Notes				
1 Category 1 trees shall be a minimum of 12 feet in height at the time of planting with a two-inch to three-inch minimum caliper.				
2 Category 2 trees shall be a minimum of ten feet in height at the time of planting with a two-inch to three-inch minimum caliper.				
3 Category 3 trees shall be a minimum of eight feet in height at the time of planting with a two-inch to three-inch minimum caliper.				
4 Category 4 palms shall have a minimum six-foot clear trunk.				
5 For full planting schedule, refer to sheet: LP-300 Planting Schedule General Notes & Details				

revuelta
architecture
international

Miami
Santiago, Chile

revuelta-architecture.com

2950 SW 27TH AVE
SUITE 110
MIAMI, FL 33133
T: 305.854.9882
F: 305.854.9882

Project

SANCTUARY HOTEL
1745 JAMES AVENUE
MIAMI BEACH, FLORIDA 33139

Revisions

Owner Information

1745 JAMES LLC

1111 Kane Concourse
Bay Harbor Islands, Florida
33140

(305) 763-8166

Consultant

DAVID O. INC.

LANDSCAPE ARCHITECTURE
2686 SW 28TH LN
MIAMI, FL 33133
P: 305.854.9299 | F: 305.854.9882
WWW.DAVIDODISHOO.COM



David J. Odishoo

RLA-66696969

HPB FINAL SUBMITTAL

Date

3/09/2020

Scale

AS SHOWN

Project No.

20002

Sheet Name
EXISTING TREE DISPOSITION &
MITIGATION SCHEDULE

Sheet No.

LR-101

1 TREE RELOCATION DETAIL

- MIST HEADS - 4 PER TREE
- WOOD BLOCKING BANDED AROUND TRUNK
- 4" X 4" X 12" BRACES NAILED TO BLOCKING 6 TO 8 PER TREE
- BUBBLER IRRIGATION HEADS 4-6 PER TREE
- 3" HIGH WATERING SAUCER
- 2" X 4" X 24" STAKE NAILED TO BRACE
- PLANTING MIX
- SEE RELOCATION SPECIFICATIONS FOR PRUNING AND DIGGING INFORMATION
- 6" MIN.

2 PALM RELOCATION DETAIL

- TIE UP FRONDS W/ JUNE TWINE (HURRICANE CUT OPTIONAL)
- WOOD BLOCKING BANDED AROUND TRUNK
- (3) 2 X 4 X 8 BRACES NAILED TO BLOCKING
- (3) 2 X 4 X 8 BRACES NAILED TO BRACE
- 3" HIGH SAUCER
- CLEAN SAND
- SEE RELOCATION SPECIFICATIONS FOR PRUNING AND DIGGING INFORMATION
- 6" MIN.

3 TREE PROTECTION DETAIL

PROVIDE AN ADDITIONAL 8"-12" PROTECTION AREA PER INCH OF DBH ON TREES LARGER THAN 10" DBH
10'-0" PROTECTION MIN.

- 8.5" X 11" SIGN LAMINATED IN PLASTIC SPACED EVERY 50' ALONG THE FENCE
- TREE PROTECTION FENCE: HIGH DENSITY POLYETHYLENE FENCING WITH 3.5" X 1.5" OPENINGS; COLOR: ORANGE STEEL POSTS INSTALLED AT 8' O.C.
- 2" X 6'-0" STEEL POSTS OR APPROVED EQUAL
- 5" THICK MUSH LAYER
- MAINTAIN EXISTING GRADE WITH THE TREE PROTECTION FENCE UNLESS OTHERWISE INDICATED ON PLANS

NOTES:

- 1- SEE SPECIFICATIONS FOR ADDITIONAL TREE PROTECTION REQUIREMENTS.
- 2- IF THERE IS NO EXISTING IRRIGATION, SEE SPECIFICATIONS FOR WATERING REQUIREMENTS.
- 3- NO PRUNING SHALL BE PERFORMED EXCEPT BY APPROVED ARBORIST.
- 4- NO EQUIPMENT SHALL OPERATE INSIDE THE PROTECTIVE FENCING INCLUDING DURING FENCE INSTALLATION AND REMOVAL.
- 5- SEE SITE PREPARATION PLAN FOR ANY MODIFICATIONS WITH THE TREE PROTECTION AREA.

MIAMI BEACH, FLORIDA 33139

Revisions

Owner Information

745 JAMES LLC

1111 Kane Concourse
Day Harbor Islands, Florida
33140

05) 763-8166

Consultant

DAVID O. INC.
LANDSCAPE ARCHITECTURE
2686 SW 28TH LN
MIAMI, FL 33133
305.854.9299 || F: 305.854.9882
WWW.DAVIDODISHOO.COM



A-6666969

HPB FINAL SUBMITTAL

te

09/2020

Scale

SHOWN

O.

20002

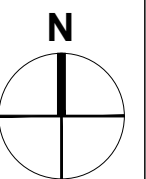
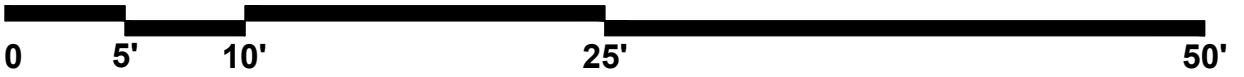
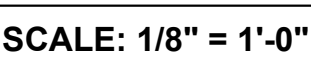
Sheet Name
LANDSCAPE PLAN

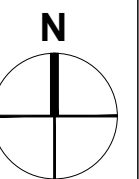
LANDSCAPE PLAN GROUND LEVEL

Sheet No.

LH-100

These Design And Drawings Are The Copyrighted Property Of Revuelta Architecture International P.A. and May Not Be Reproduced Except with Specific Written Consent of the Architect. The Contractor Must Check And Verify all Dimensions Of The Job And Be Responsible For Same. Reporting Any Discrepancies to The Architects Before Commencing work. Drawings Not to be Scaled. File Number: RAI - BIM Server 1 - BIMcloud Basic for ARCHCAD 21/1922. SANCTUARY HOTEL OF 34 UNITS - By Last saved by - Date: 2/12/20





SANCTUARY HOTEL
1745 JAMES AVENUE
MIAMI BEACH, FLORIDA 33139

Owner Information
5 JAMES LLC
 11 Kane Concourse
 Fort Myers, Florida
 33140
 (305) 763-8166

Consultant
DAVID O. INC.
LANDSCAPE ARCHITECTURE
2686 SW 28TH LN
MIAMI, FL 33133
305.854.9299 || F: 305.854.9882
WWW.DAVIDODISHOO.COM



HPB FINAL SUBMITTAL

Date
3/09/2020
Scale
AS SHOWN
Project No.
20002

Sheet Name
PLANTING PLAN
ROUND LEVEL - CANOPY

Sheet No.

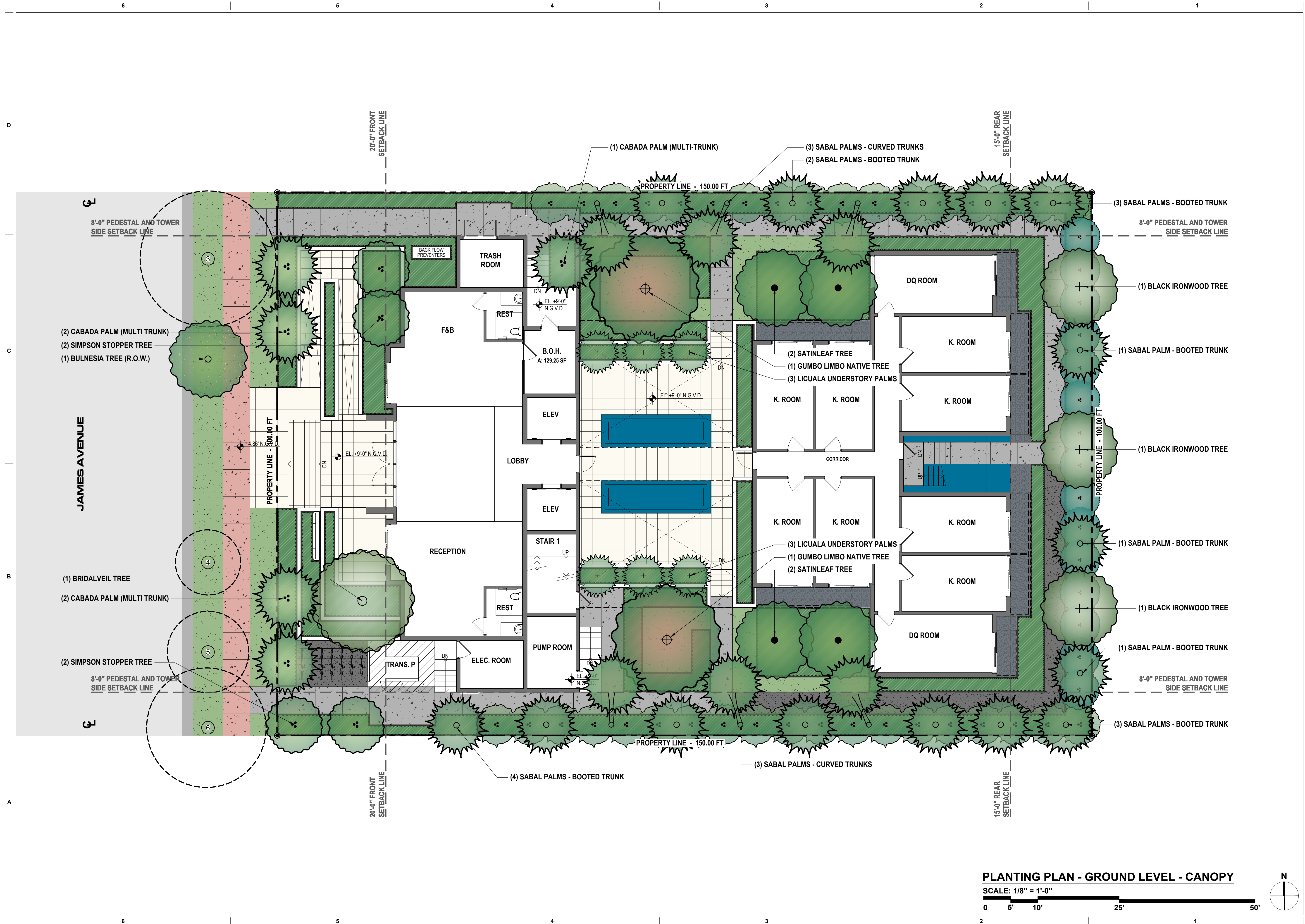
P-100

These Design And Drawings Are The Copyrighted Property Of Revuelta Architecture International P A, And May Not Be Reproduced Except With Specific Written Consent of The Architect.

The Contractor Must Check And Verify all Dimensions Of The Job And Be Responsible For Same, Reporting Any Discrepancies To The Architects Before Commencing work. Drawings Not to be Scaled.

BIMcloud Basic for ARCHICAD 22/1922 SANCTUARY HOTEL OP 94 UNITS - BY #Last saved by - Date: 2/1/2020

File: BIMcloud: RAI - BIM Server 1 - BIMcloud Basic for ARCHICAD 22/1922 SANCTUARY HOTEL OP 94 UNITS - BY #Last saved by - Date: 2/1/2020



Project

SANCTUARY HOTEL
1745 JAMES AVENUE

MIAMI BEACH, FLORIDA 33139

Revisions

Owner Information

745 JAMES LLC

1111 Kane Concourse
Bay Harbor Islands, Florida
33140

05) 763-8166

Consultant

DAVID O. INC.
LANDSCAPE ARCHITECTURE
2686 SW 28TH LN
MIAMI, FL 33133
305.854.9299 || F: 305.854.9882
WWW.DAVIDODISHOO.COM



David J. Odishoo
RLA-6666969

HPB FINAL SUBMITTAL

ate

09/2020

Scale

SHOWN

002

Sheet Name

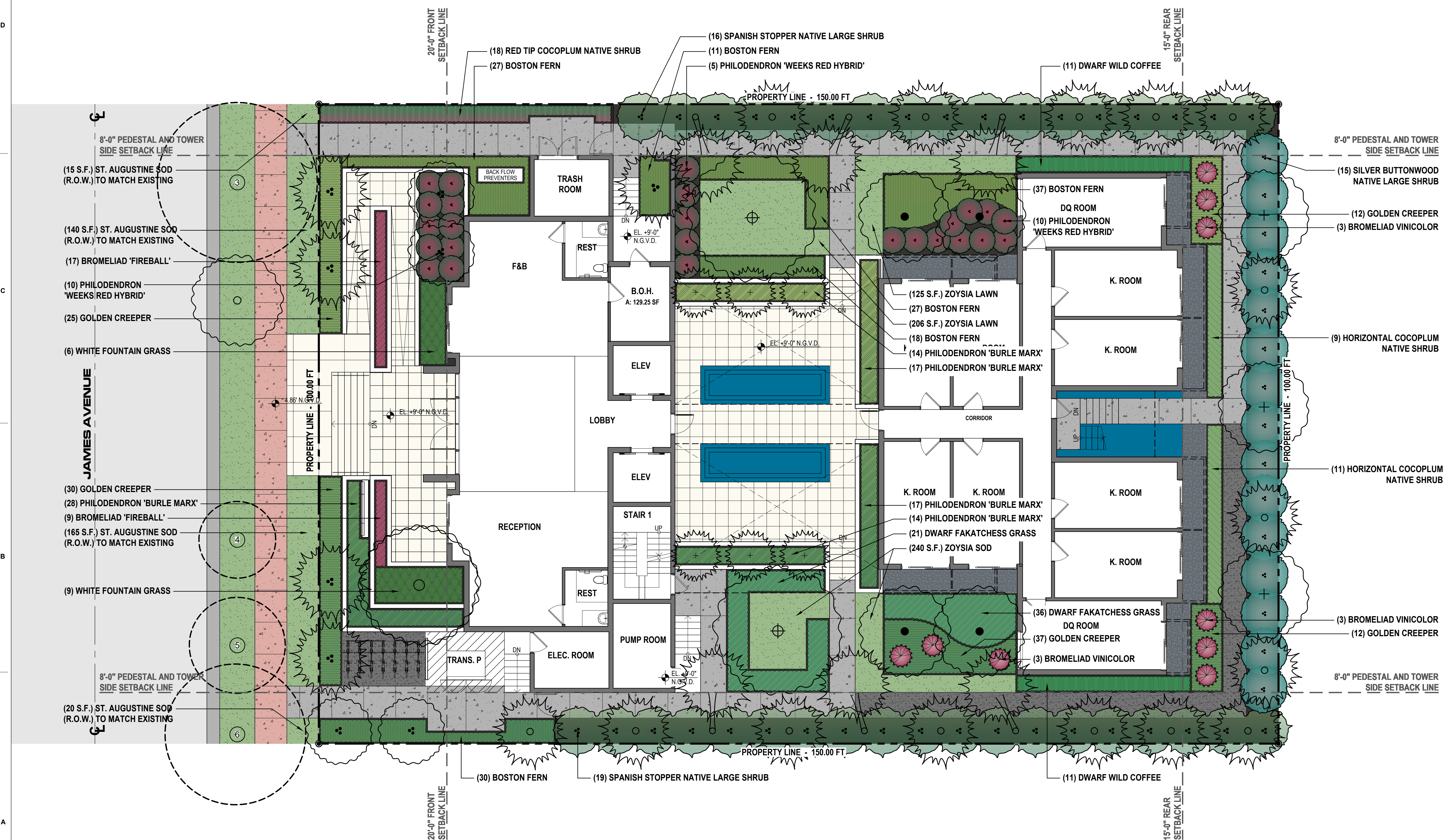
PLANTING PLAN
ROUND LEVEL - UNDERSTORY

Sheet No.

LP-101

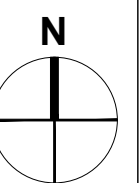
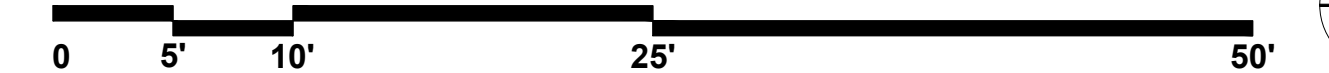
NOT FOR CONSTRUCTION

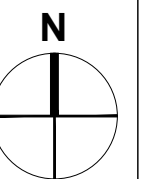
File: BIMcloud; RA1 - BIM Server 1 - BIMcloud Basic for ARCHICAD 22/1922 - SANCTUARY/1922 - SANCTUARY HOTEL OP 94 UNITS - By #last saved by - Date: 28/11/2020



PLANTING PLAN - GROUND LEVEL - UNDERSTORY

SCALE: 1/8" = 1'-0"





These Design And Drawings Are The Copyrights Property Of Revuelta Architecture International P.A. and May Not Be Reproduced Except with Specific Written Consent of the Architect.
File: B:\Bldg\Draw\1 - BIM\Server - 1 - Bldg\Draw\Basis for ARCHICAD 22\1922 - SANCTUARY HOTEL 04 UNITS - By Hand saved by - Date: 2/1/2020

NOT FOR CONSTRUCTION



VERAWOOD TREE



SIMPSON STOPPER TREE



BRIDALVEIL TREE



GUMBO LIMBO TREE



BLACK IRONWOOD TREE



SATINLEAF TREE



CABADA PALM



SABAL PALM - CURVED TRUNK



SABAL PALM - BOOTED TRUNK



LICUALA PALM



SILVER BUTTWOOD SHRUB



SPANISH STOPPER SHRUB



COCOPLUM 'RED TIP'



PHILODENDRON 'WEEKS RED HYBRID'



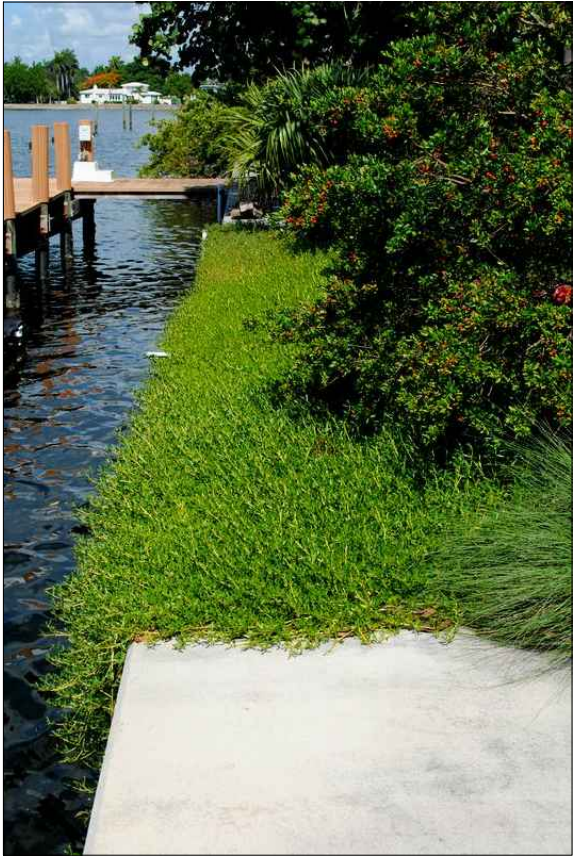
PHILODENDRON 'BURLE MARX'



WILD COFFEE SHRUB



BOSTON FERN



GOLDEN CREEPER



COCOPLUM 'HORIZONTAL'



DWARF FAKAHATCHEE GRASS



WHITE FOUNTAIN GRASS



CLUSIA ROSEA 'NANA'



DIOON MEJIAE & BROMELIAD 'FIREBALL'



BROMELIAD 'VINICOLOR'

revuelta
architecture
international

Miami
Santiago, Chile

revuelta-architecture.com

2850 SW 37TH AVE
SUITE 110
MIAMI, FL 33133
T: 305.854.9882
F: 305.854.9882

Project

SANCTUARY HOTEL

1745 JAMES AVENUE
MIAMI BEACH, FLORIDA 33139

Revisions

Owner Information

1745 JAMES LLC

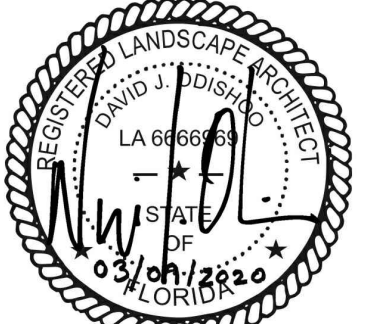
1111 Kane Concourse
Bay Harbor Islands, Florida
33140

(305) 763-8166

Consultant

DAVID O. INC.

LANDSCAPE ARCHITECTURE
2686 SW 28TH LN
MIAMI, FL 33133
P: 305.854.9299 | F: 305.854.9882
WWW.DAVIDODISHOO.COM



David J. Odishoo
RLA-6666969

HPB FINAL SUBMITTAL

Date

3/09/2020

Scale

AS SHOWN

Project No.

20002

Sheet Name

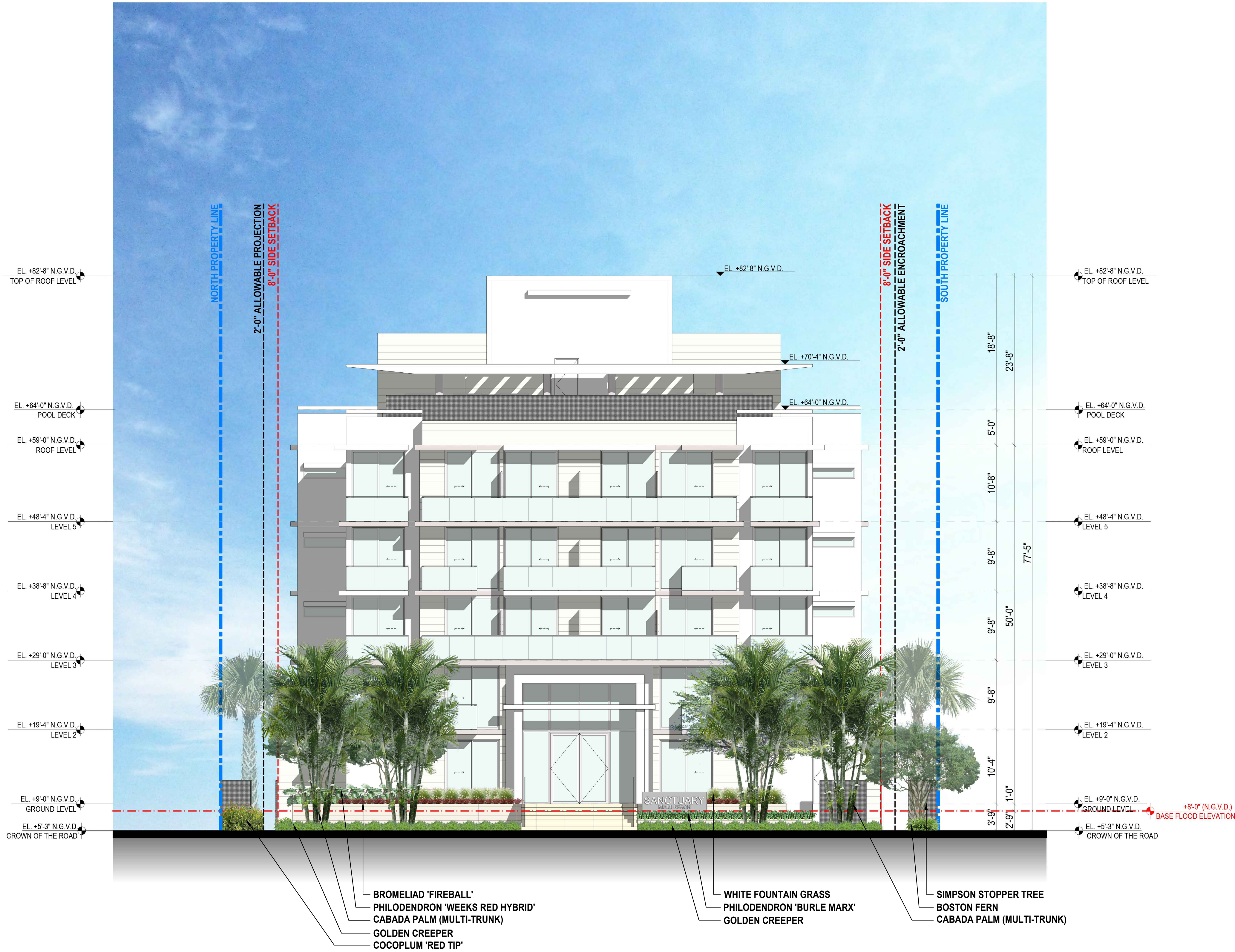
PLANTING IMAGES

Sheet No.

LP-301

These Design And Drawings Are The Copyrights Property Of Revuelta Architecture International P.A. and May Not Be Reproduced Except with Specific Written Consent of the Architect.
File: Bldg001.dwg - BIM Server: 1 - Bldg001.dwg - SANCTUARY HOTEL 02/21/2022 - SANCTUARY HOTEL 02/21/2022 - By: J. Odishoo - Date: 2/1/2022

NOT FOR CONSTRUCTION



revuelta
architecture
international

Miami
Santiago, Chile
revuelta-architecture.com

2850 SW 37TH AVE
SUITE 110
MIAMI, FL 33133
T: 305.854.9299
F: 305.854.9882

Project

SANCTUARY HOTEL
1745 JAMES AVENUE
MIAMI BEACH, FLORIDA 33139

Revisions

Owner Information

1745 JAMES LLC
1111 Kane Concourse
Bay Harbor Islands, Florida
33140

(305) 763-8166

Consultant

DAVID O. INC.
LANDSCAPE ARCHITECTURE
2686 SW 28TH LN
MIAMI, FL 33133
P: 305.854.9299 | F: 305.854.9882
WWW.DAVIDODISHOO.COM



David J. Odishoo
RLA-66699

HPB FINAL SUBMITTAL

Date

3/09/2020

Scale

AS SHOWN

Project No.

20002

Sheet Name

WEST ELEVATION

Sheet No.

LE-100



These Design And Drawings Are The Copyrights Property Of Revuelta Architecture International P.A. and May Not Be Reproduced Except with Specific Written Consent of the Architect.
File: Bldg001.dwg - BIM Server: 1 - Bldg001.dwg - SANCTUARY HOTEL OF 84 UNITS - By: #land saved by: - Date: 2/11/2020

NOT FOR CONSTRUCTION



EAST ELEVATION

SCALE: 1/8" = 1'-0"



revuelta
architecture
international

Miami
Santiago, Chile
revuelta-architecture.com

2850 SW 37TH AVE
SUITE 110
MIAMI, FL 33133
T: 305.854.9299
F: 305.854.9882

Project

SANCTUARY HOTEL

1745 JAMES AVENUE
MIAMI BEACH, FLORIDA 33139

Revisions

Owner Information

1745 JAMES LLC

1111 Kane Concourse
Bay Harbor Islands, Florida
33140

(305) 763-8166

Consultant

DAVID O. INC.

LANDSCAPE ARCHITECTURE
2686 SW 28TH LN
MIAMI, FL 33133
P: 305.854.9299 | F: 305.854.9882
WWW.DAVIDODISHOO.COM



David J. Odishoo
RLA-66699

HPB FINAL SUBMITTAL

Date

3/09/2020

Scale

AS SHOWN

Project No.

20002

Sheet Name

EAST ELEVATION

Sheet No.

LE-102

1745 JAMES AVENUE
MIAMI BEACH, FLORIDA 33438

Revisions

Owner Information

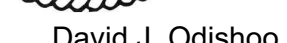
1745 JAMES LLC

1111 Kane Concourse
Bay Harbor Islands, Florida
33140

(305) 763-8166

Consultant

DAVID O. INC.
LANDSCAPE ARCHITECTURE
2686 SW 28TH LN
MIAMI, FL 33133
P: 305.854.9299 || F: 305.854.9882
WWW.DAVIDODISHOO.COM



RLA-6666969

HPB FINAL SUBMITTAL

Date _____

3/09/2020

Scale

AS SHOWN

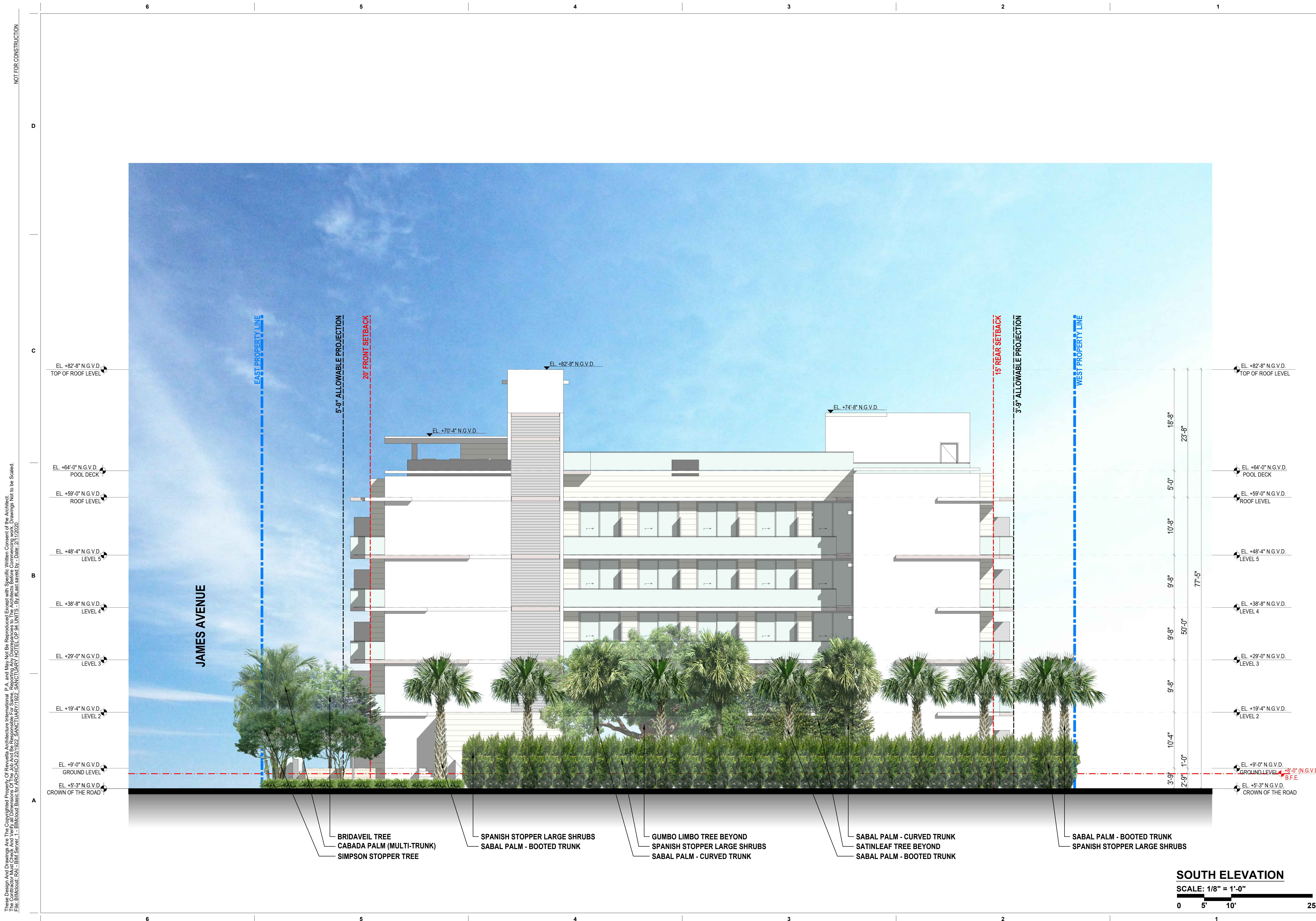
Project No.

20002


Sheet Name

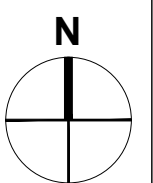
ELEVATION

Sheet No.
LE-103



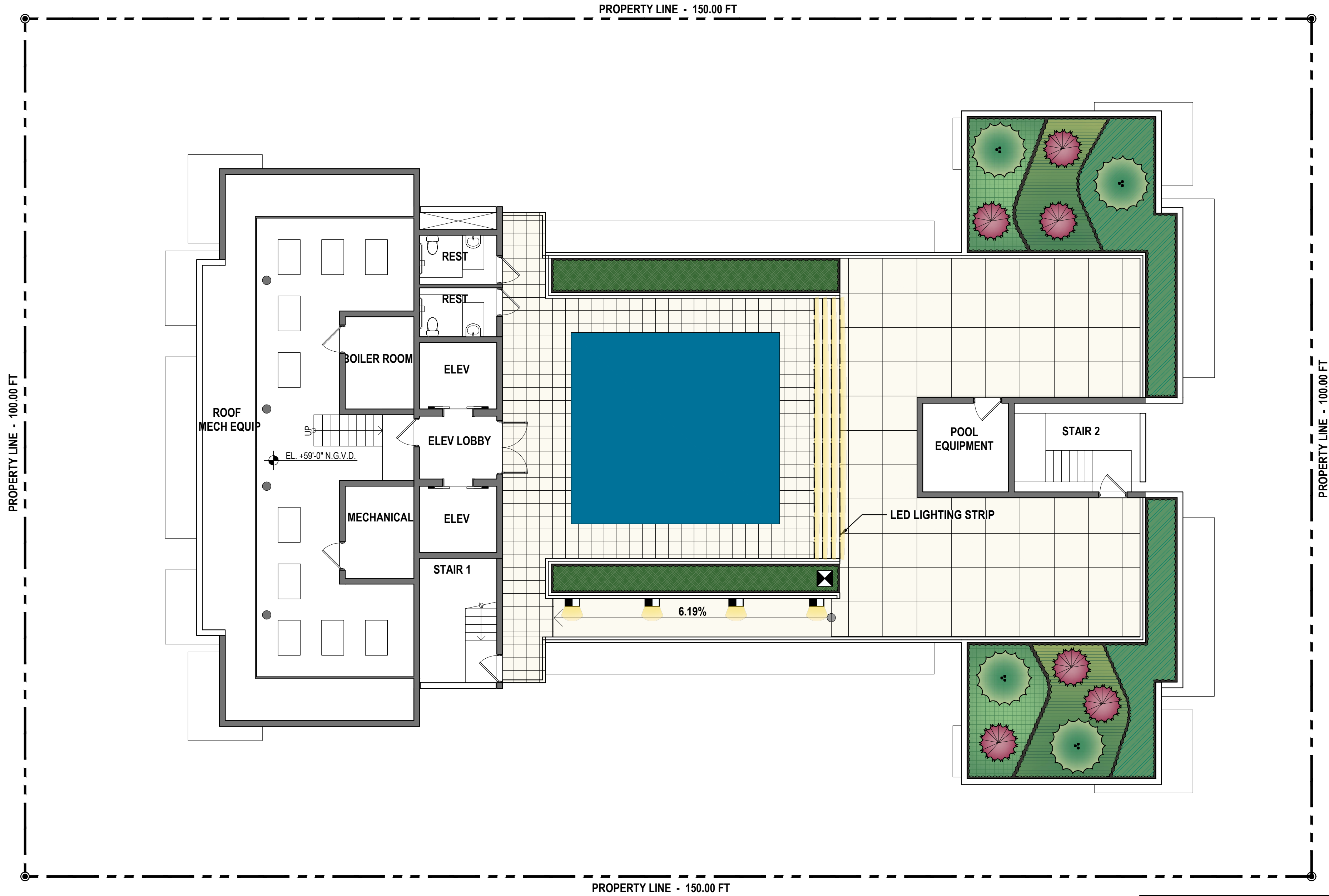


QTY	SYMBOL	DESCRIPTION
9		WATER FEATURE LIGHTS



These Design And Drawings Are The Copyrights Property Of Revuelta Architecture International P.A. and May Not Be Reproduced Except with Specific Written Consent of the Architect.
File: B:\Midwest\Basis for ARCHICAD 22\1922- SANCTUARY HOTEL OF 84 UNITS - By #land saved by - Date: 2/11/2020

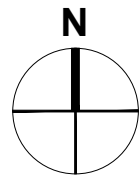
NOT FOR CONSTRUCTION



QTY	SYMBOL	DESCRIPTION
135 L.F.	---	LED LIGHTING STRIP IN RECESSES.
1	⊠	TRANSFORMER
4	☐	NICHE LIGHTS AT RAMP

LIGHTING PLAN - POOL DECK LEVEL

SCALE: 1/8" = 1'-0"



revuelta
architecture
international

Miami
Santiago, Chile
revuelta-architecture.com

2850 SW 37TH AVE
SUITE 110
MIAMI, FL 33133
T: 305.854.9299
F: 305.854.9882

Project

SANCTUARY HOTEL
1745 JAMES AVENUE
MIAMI BEACH, FLORIDA 33139

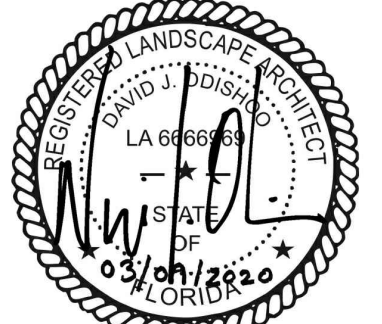
Revisions

Owner Information

1745 JAMES LLC
1111 Kane Concourse
Bay Harbor Islands, Florida
33140
(305) 763-8166

Consultant

DAVID O. INC.
LANDSCAPE ARCHITECTURE
2686 SW 28TH LN
MIAMI, FL 33133
P: 305.854.9299 | F: 305.854.9882
WWW.DAVIDODISHOO.COM



David J. Odishoo
RLA-66669699

HPB FINAL SUBMITTAL

Date

3/09/2020

Scale

AS SHOWN

Project No.

20002

Sheet Name

LIGHTING PLAN

POOL DECK LEVEL

Sheet No.

LL-200