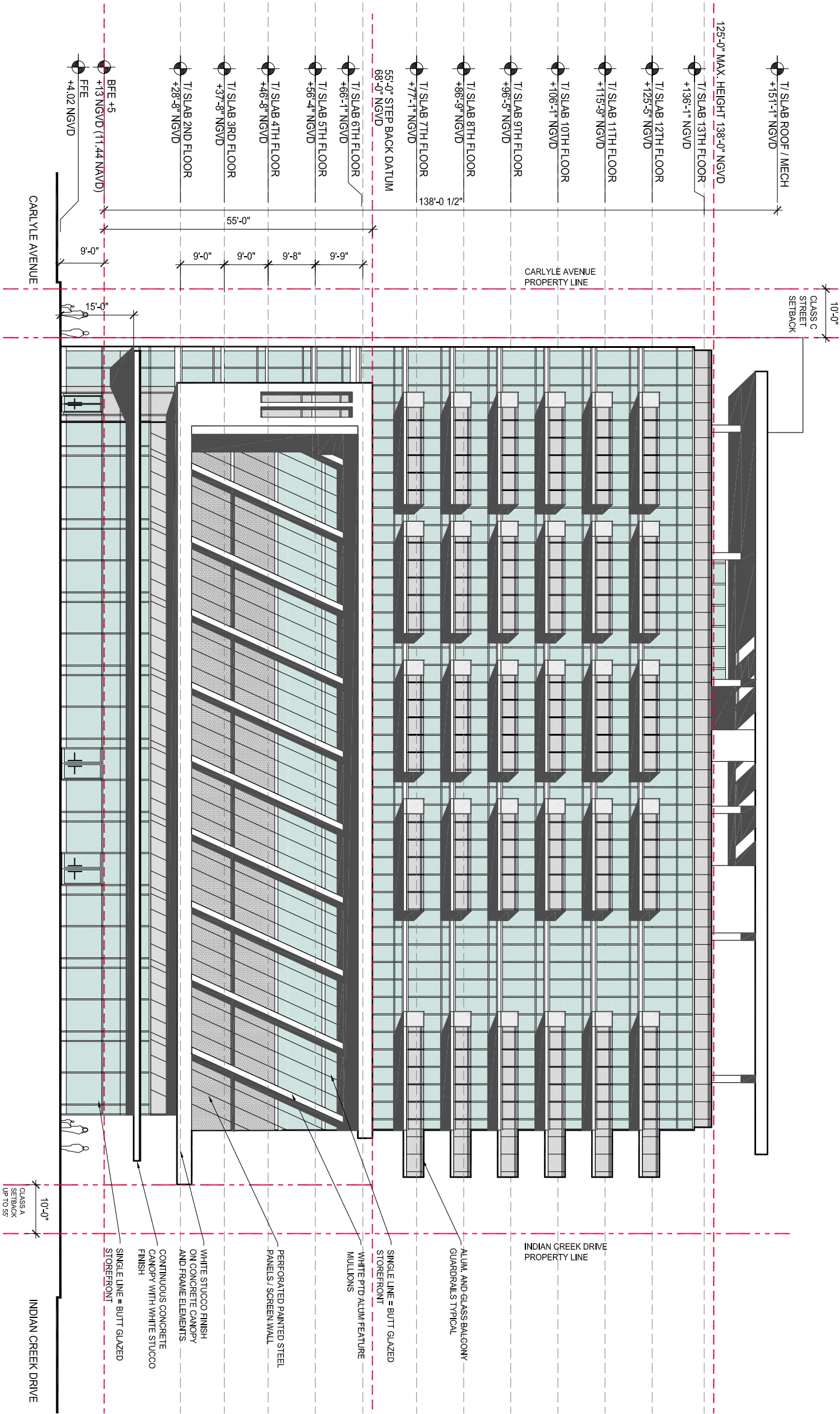


71st Street and Indian Creek Drive

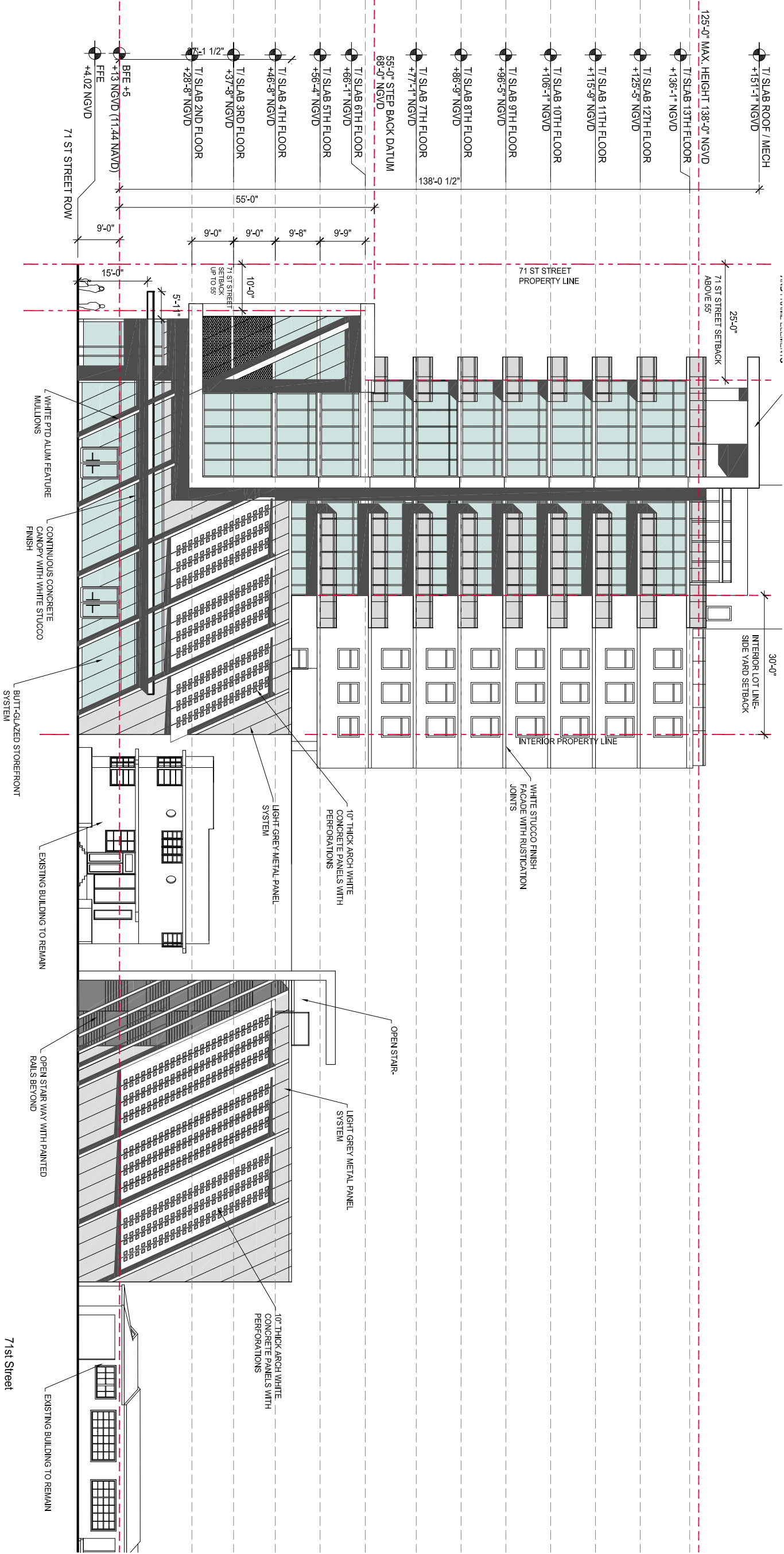
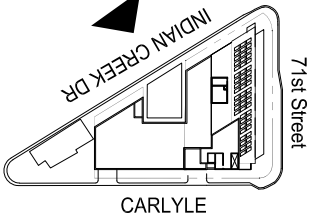
NoBe Creek LLC
B U I L T F O R M
A R C H I T E C T U R E

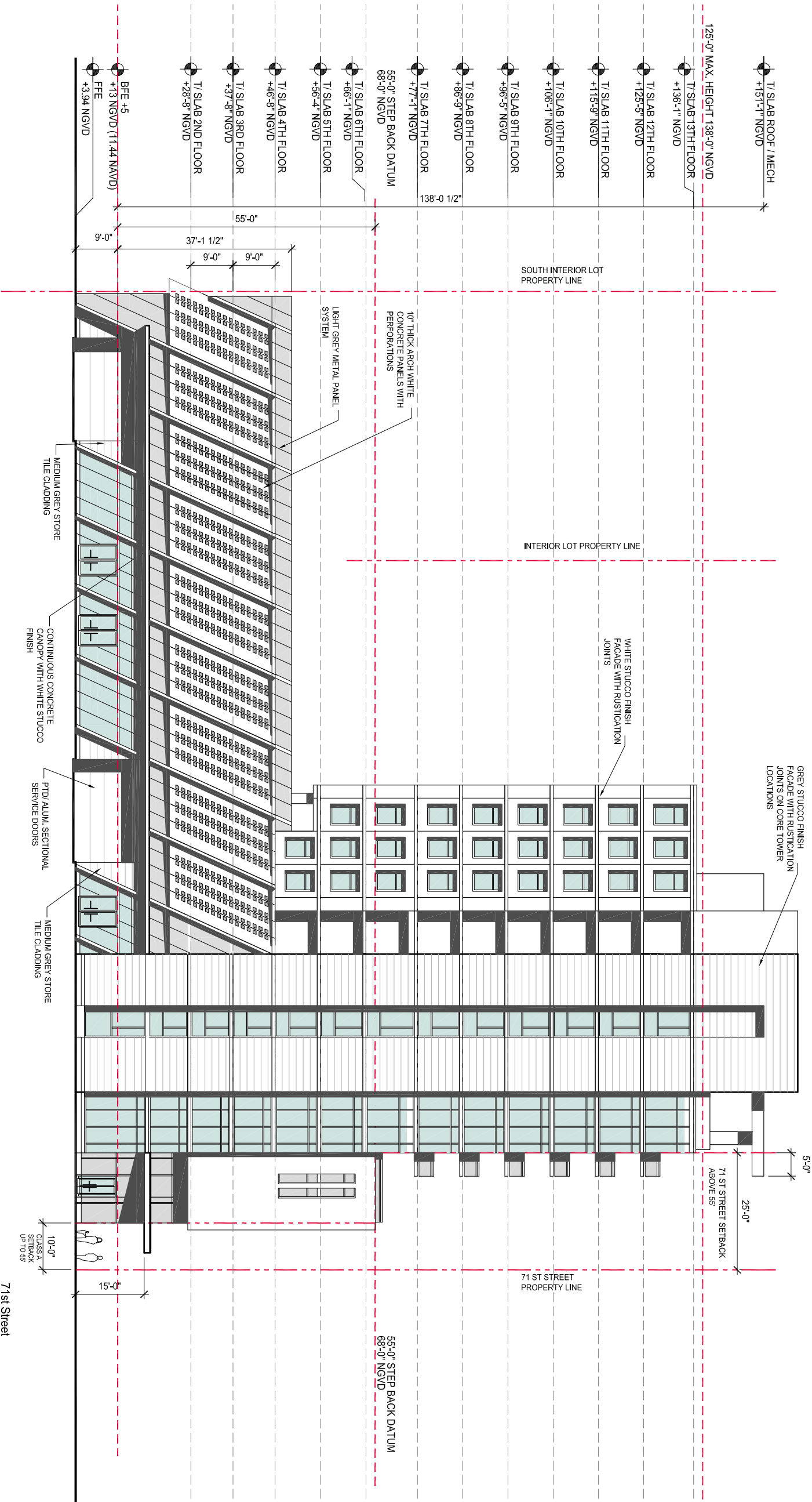
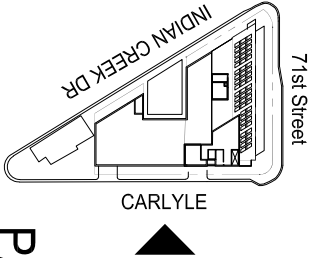


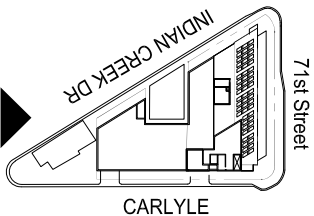
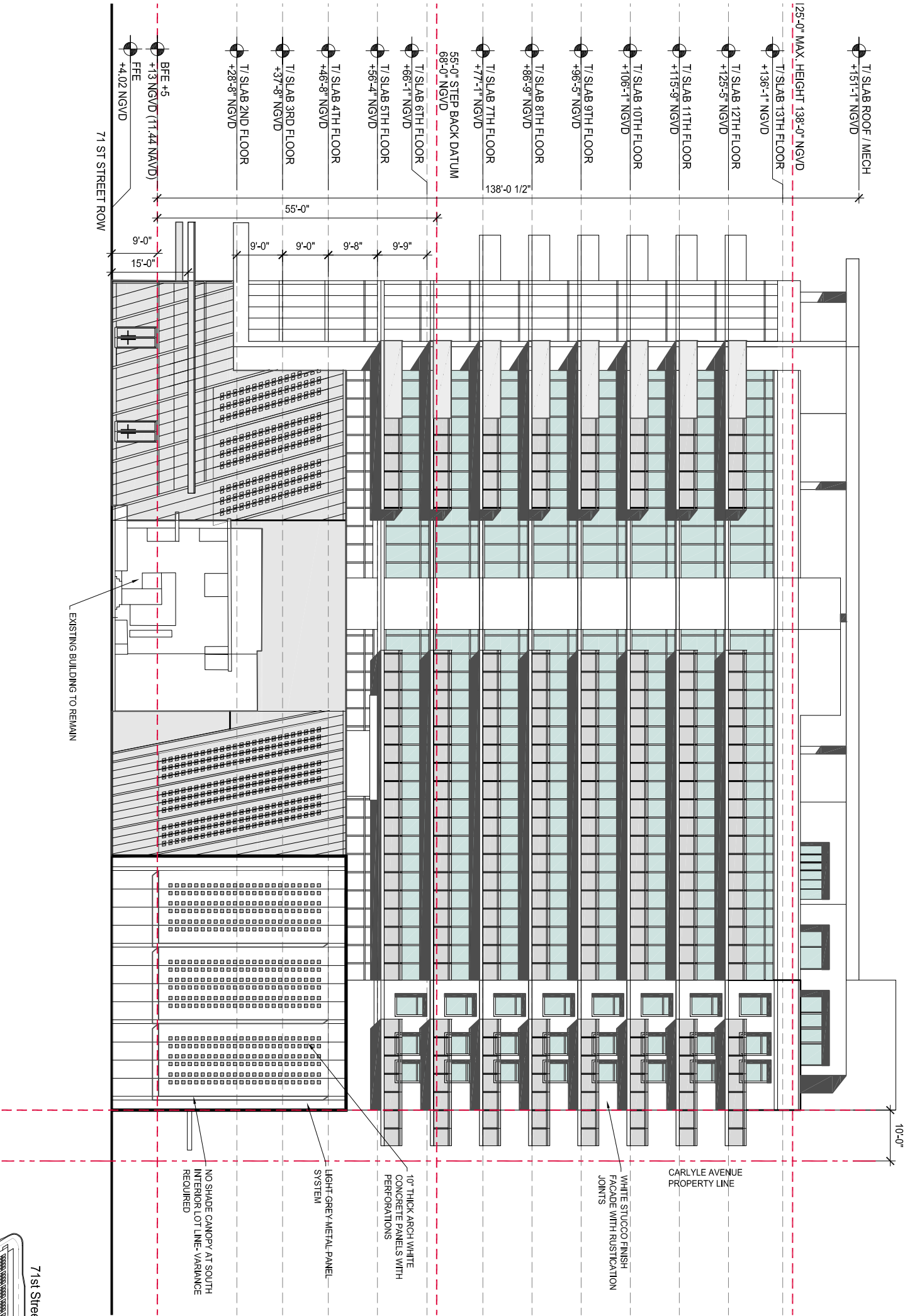
NORTH ELEVATION
SCALE : 1"=20'-0"

DRB FINAL SUBMITTAL
MARCH 09, 2020

71st Street and Indian Creek Drive







71st Street and Indian Creek Drive

NoBe Creek LLC

B U I L T F O R M
A R C H I T E C T U R E

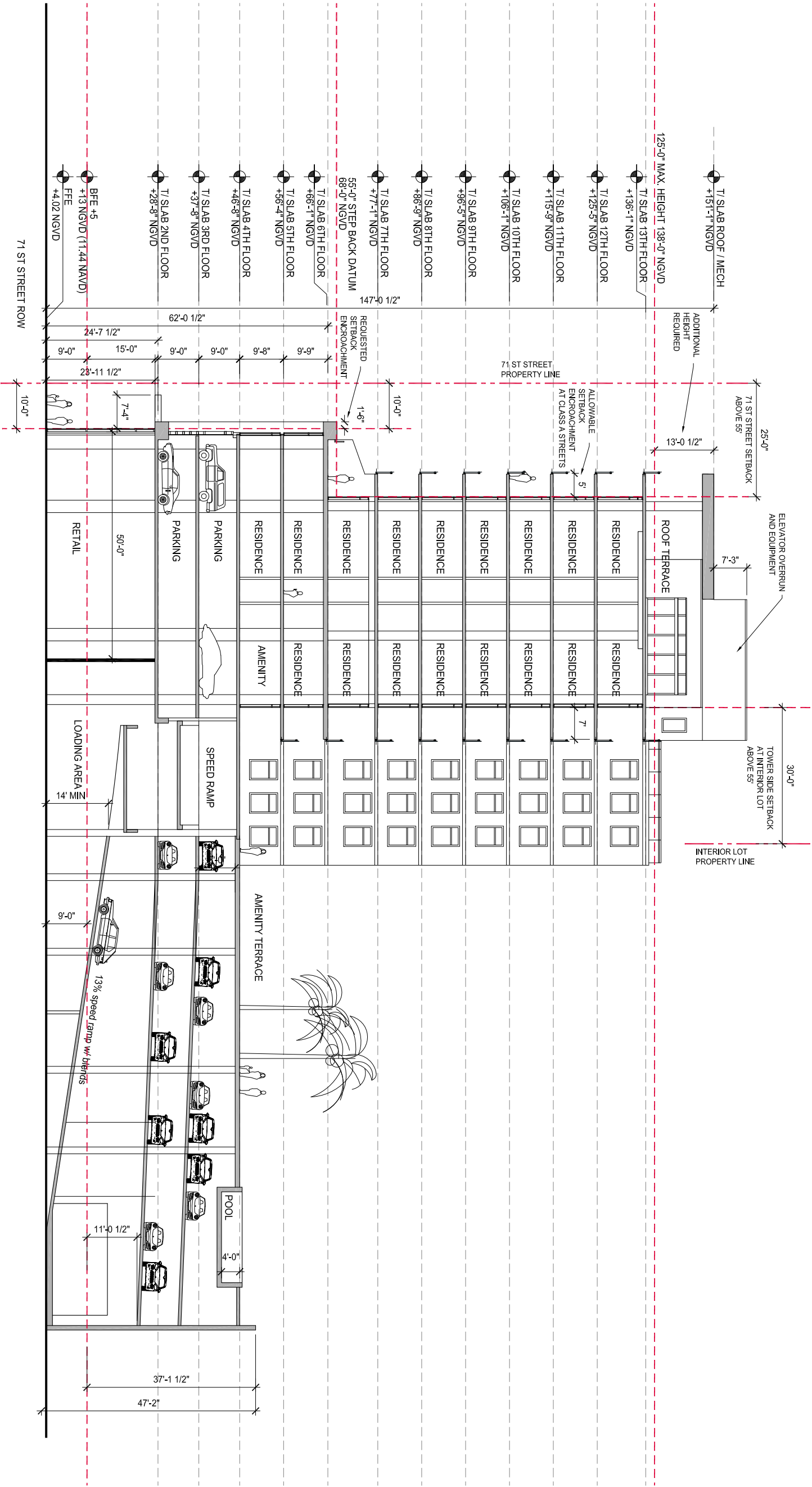
SOUTH ELEVATION

SCALE : 1"=20'-0"

DRB FINAL SUBMITTAL

MARCH 09, 2020

PAGE 25.5



71st Street and Indian Creek Drive

PAGE 26



ANODIZED ALUM &
GLASS WINDOW WALL
AND BALCONY RAILS



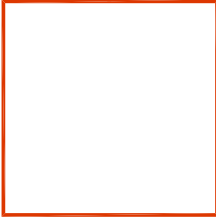
TRANSLUCENT GLASS
SCREEN WALL



STUCCO FINISHES
WHITE



MEDIUM WARM GREY



METAL PANEL SYSTEM



PRECAST CONCRETE
SCREEN SYSTEM

71st Street and Indian Creek Drive

PAGE 27

AERIAL RENDERING LOOKING NORTH EAST

ANODIZED ALUM &
GLASS WINDOW-WALL
AND BALCONY RAILS



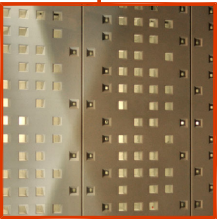
STUCCO FINISHES
WHITE



MEDIUM WARM GREY



PRECAST CONCRETE
SCREEN SYSTEM



RENDERING LOOKING
SOUTH EAST

TRANSLUCENT GLASS
SCREEN WALL



ANODIZED ALUMINUM
STOREFRONT SYSTEMS



71st Street and Indian Creek Drive

PAGE 28

ANODIZED ALUM &
GLASS WINDOW-WALL
AND BALCONY RAILS



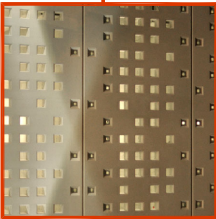
STUCCO FINISHES
WHITE



MEDIUM WARM GREY



PRECAST CONCRETE
SCREEN SYSTEM



RENDERING LOOKING
SOUTH EAST

TRANSLUCENT GLASS
SCREEN WALL



ANODIZED ALUMINUM
STOREFRONT SYSTEMS



71st Street and Indian Creek Drive

PAGE 29

STUCCO FINISHES
WHITE



MEDIUM WARM GREY



ANODIZED ALUM &
GLASS WINDOW-WALL
AND BALCONY RAILS



STUCCO FINISHES
WHITE



RENDERING LOOKING
WEST

TRANSLUCENT GLASS
SCREEN WALL



ANODIZED ALUMINUM
STOREFRONT SYSTEMS



71st Street and Indian Creek Drive

PAGE 30

STUCCO FINISHES
WHITE



ANODIZED ALUM.
GLASS WINDOW-WALL
AND BALCONY RAILS



TRANSLUCENT GLASS
SCREEN WALL



ANODIZED ALUMINUM
STOREFRONT SYSTEMS



RENDERING OF NORTH PODIUM FACADE

71st Street and Indian Creek Drive

PAGE 31