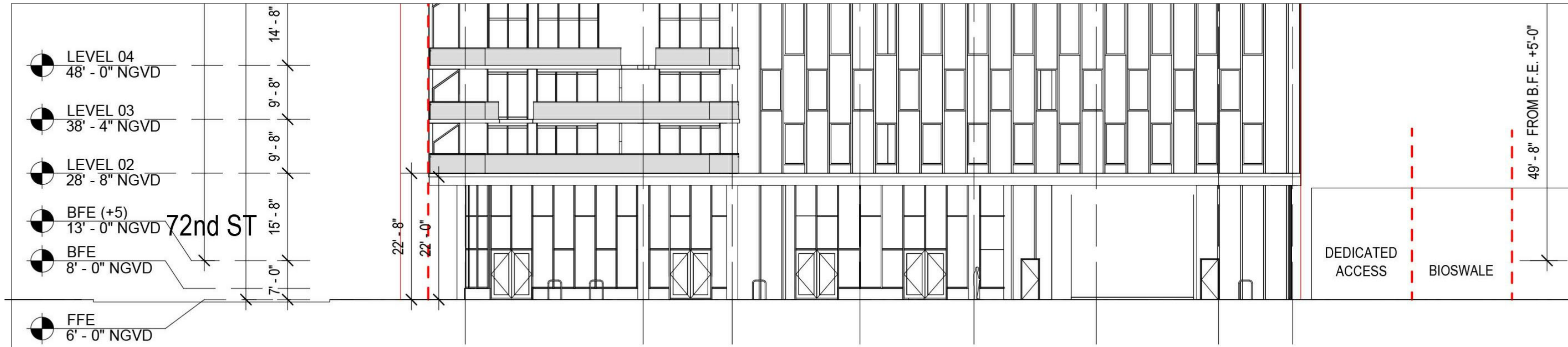


STREET ELEVATION - 72ND ST



STREET ELEVATION - 72ND ST - RENDERED



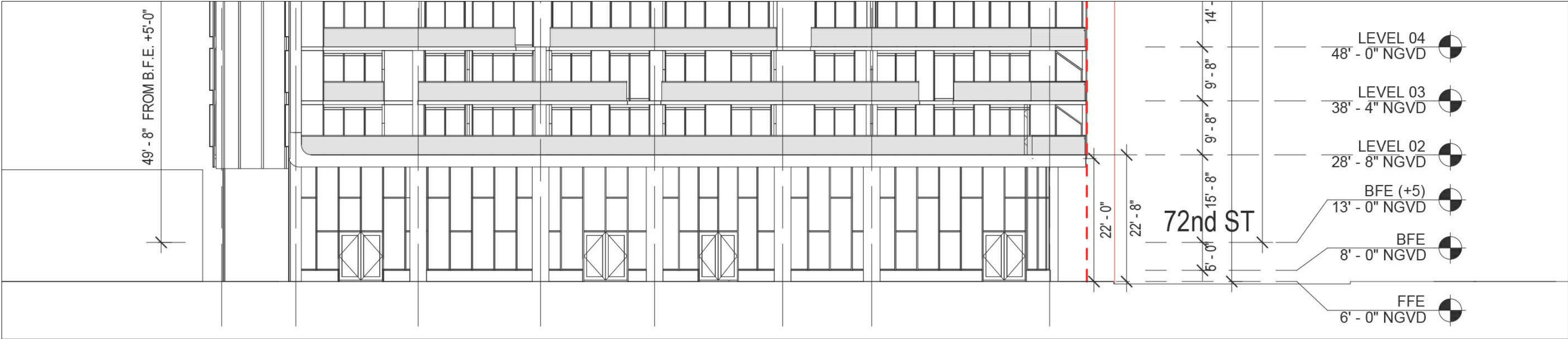


STREET ELEVATION - BYRON AVE



STREET ELEVATION - ABYRON AVE - RENDERED

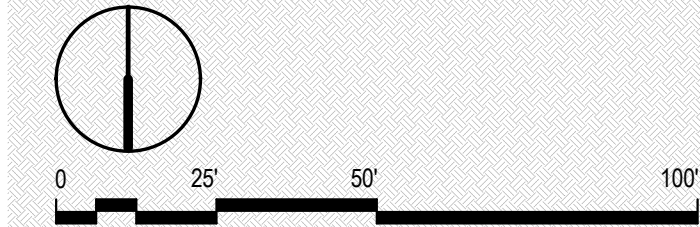




STREET ELEVATION - ABBOTT AVE

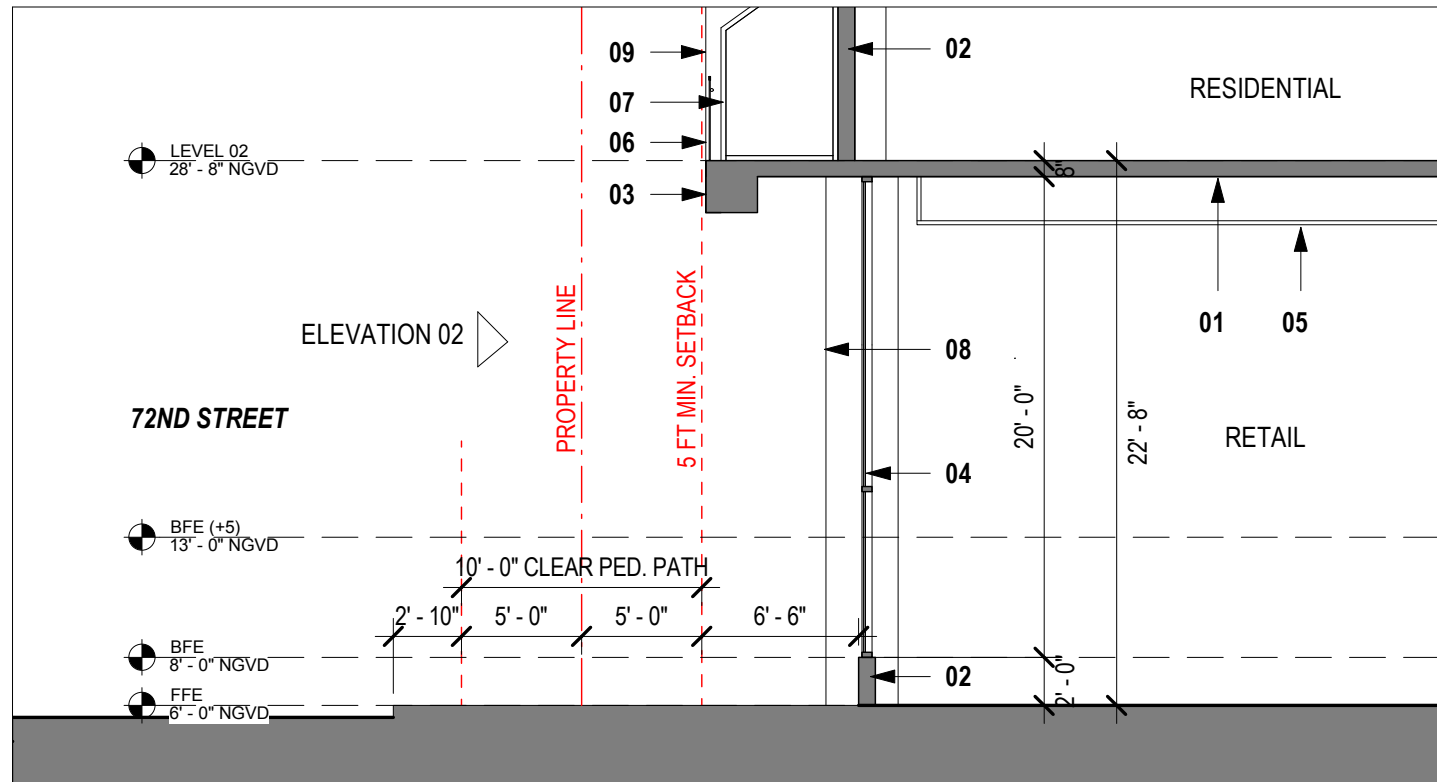


STREET ELEVATION - ABBOTT AVE - RENDERED



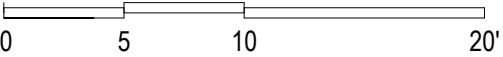


ELEVATION 02 - 1/8"=1'-0"



SECTION 02 - 1/8"=1'-0"

- LEGEND**
- 01 - Concrete slab
 - 02 - Masonry wall with dark grey stucco finish
 - 03 - Architectural frame (white painted concrete)
 - 04 - Window wall system
 - 05 - Dropped ceiling
 - 06 - Glass railing
 - 07 - Glass balcony divider
 - 08 - Concrete column
 - 09 - Architectural frame beyond
 - 10 - Retail entrance door



ARQUITECTONICA

2900 Oak Avenue, Miami, FL 33133
T 305.372.1812 F 305.372.1175

ALL DESIGNS INDICATED IN THESE DRAWINGS ARE PROPERTY OF ARQUITECTONICA INTERNATIONAL CORP. NO COPIES, TRANSMISSIONS, REPRODUCTIONS OR ELECTRONIC MANIPULATION OF ANY PORTION OF THESE DRAWINGS IN THE WHOLE OR IN PART ARE TO BE MADE WITHOUT THE EXPRESS OF WRITTEN AUTHORIZATION OF ARQUITECTONICA INTERNATIONAL CORP. DESIGN INTENT SHOWN IS SUBJECT TO REVIEW AND APPROVAL OF ALL APPLICABLE LOCAL AND GOVERNMENTAL AUTHORITIES HAVING JURISDICTION. ALL COPYRIGHTS RESERVED © 2019. THE DATA INCLUDED IN THIS STUDY IS CONCEPTUAL IN NATURE AND WILL CONTINUE TO BE MODIFIED THROUGHOUT THE COURSE OF THE PROJECTS DEVELOPMENT WITH THE EVENTUAL INTEGRATION OF STRUCTURAL, MEP AND LIFE SAFETY SYSTEMS. AS THESE ARE FURTHER REFINED, THE NUMBERS WILL BE ADJUSTED ACCORDINGLY.

FINAL SUBMITTAL

7140 ABBOTT AVE, MIAMI
BEACH, FL 33141

SECTION 02

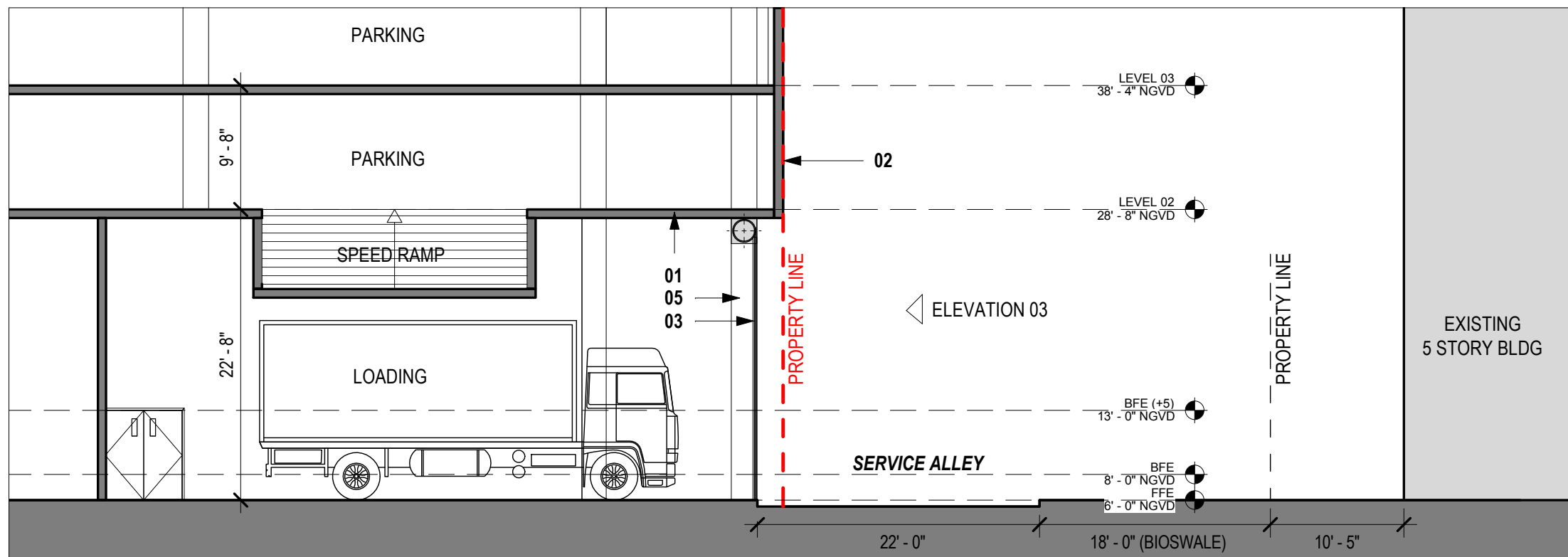
SCALE: 1/8" = 1'-0"

DATE:
02/10/20

A3-01

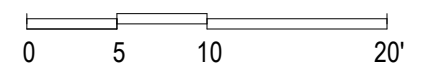


ELEVATION 03 - 3/32"=1'-0"



SECTION 03 - 3/32"=1'-0"

- LEGEND**
- 01 - Concrete slab
 - 02 - Masonry wall with white racked stucco finish
 - 03 - Window frame with perforated metal panel at garage levels and glass panel at residential levels
 - 04 - Metal overhead rolling door
 - 05 - Column beyond



ARQUITECTONICA

2900 Oak Avenue, Miami, FL 33133
T 305.372.1812 F 305.372.1175

ALL DESIGNS INDICATED IN THESE DRAWINGS ARE PROPERTY OF ARQUITECTONICA INTERNATIONAL CORP. NO COPIES, TRANSMISSIONS, REPRODUCTIONS OR ELECTRONIC MANIPULATION OF ANY PORTION OF THESE DRAWINGS IN THE WHOLE OR IN PART ARE TO BE MADE WITHOUT THE EXPRESS WRITTEN AUTHORIZATION OF ARQUITECTONICA INTERNATIONAL CORP. DESIGN INTENT SHOWN IS SUBJECT TO REVIEW AND APPROVAL OF ALL APPLICABLE LOCAL AND GOVERNMENTAL AUTHORITIES HAVING JURISDICTION. ALL COPYRIGHTS RESERVED © 2019. THE DATA INCLUDED IN THIS STUDY IS CONCEPTUAL IN NATURE AND WILL CONTINUE TO BE MODIFIED THROUGHOUT THE COURSE OF THE PROJECTS DEVELOPMENT WITH THE EVENTUAL INTEGRATION OF STRUCTURAL, MEP AND LIFE SAFETY SYSTEMS. AS THESE ARE FURTHER REFINED, THE NUMBERS WILL BE ADJUSTED ACCORDINGLY.

FINAL SUBMITTAL

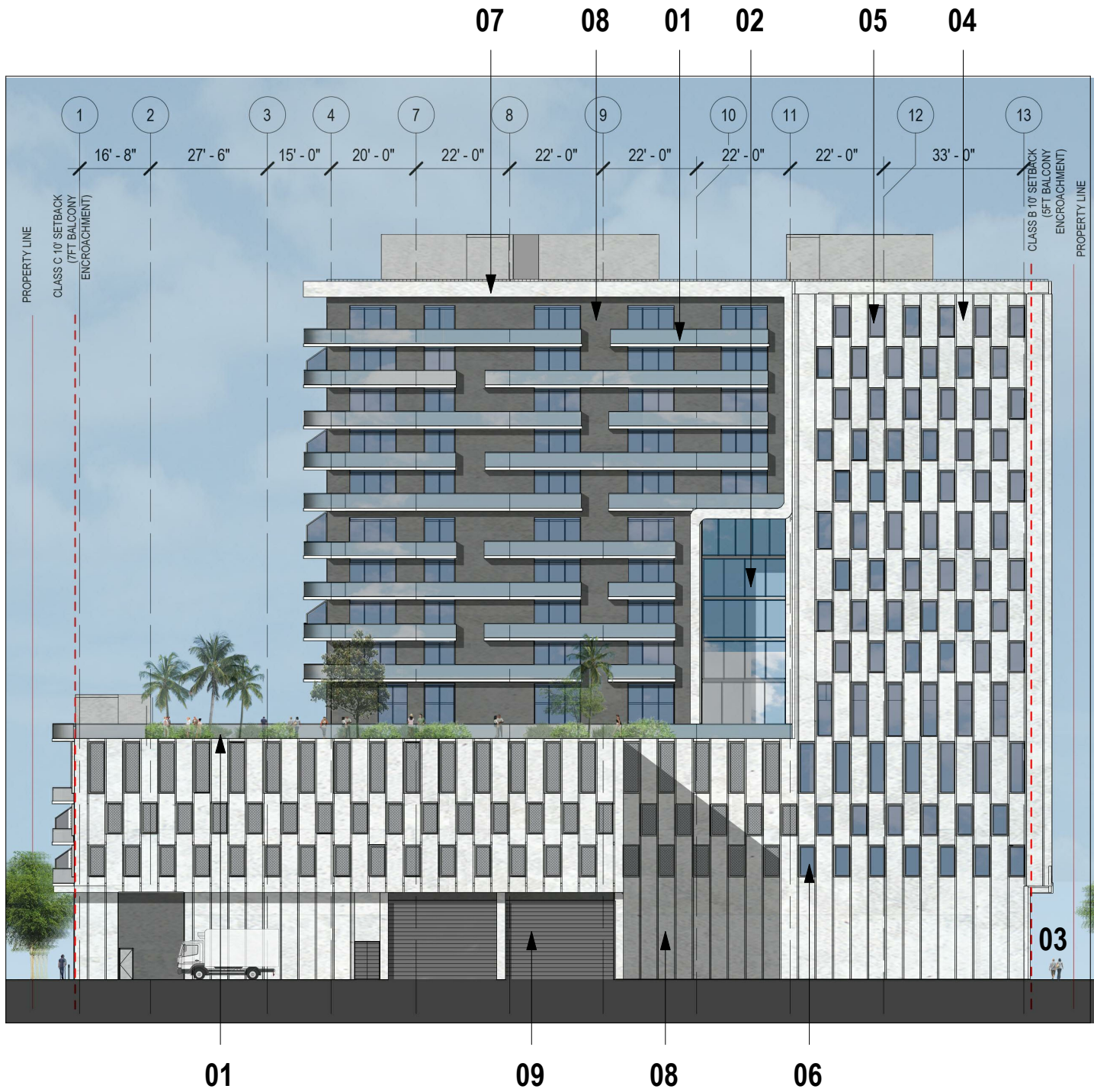
7140 ABBOTT AVE, MIAMI
BEACH, FL 33141

SECTION 03

SCALE: 3/32" = 1'-0"

DATE:
02/10/20

A3-02



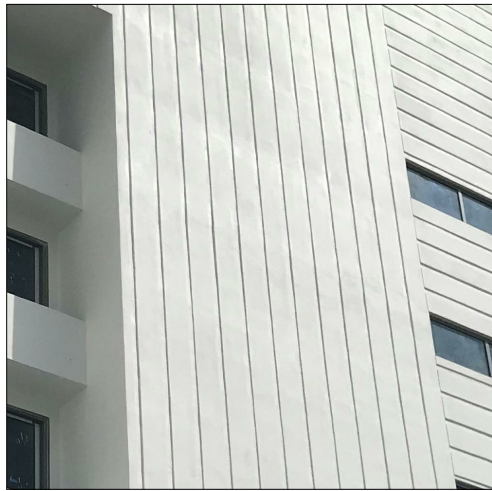
01- GLASS RAILING



02- WINDOW WALL SYSTEM



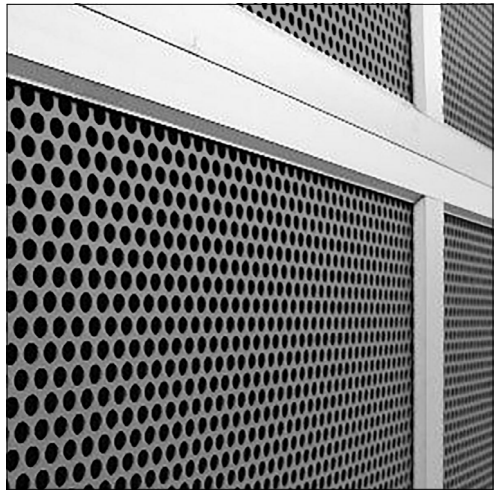
03- RETAIL FACADE



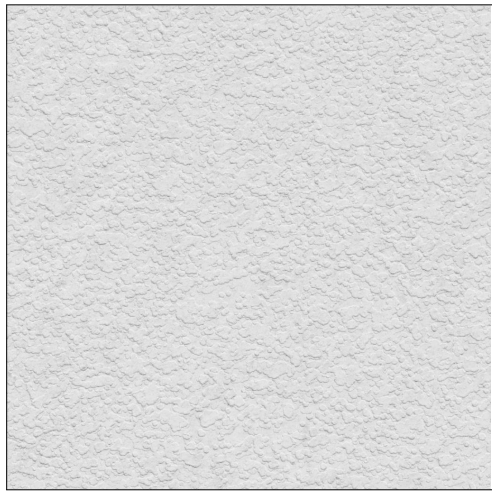
04- RACKED STUCCO



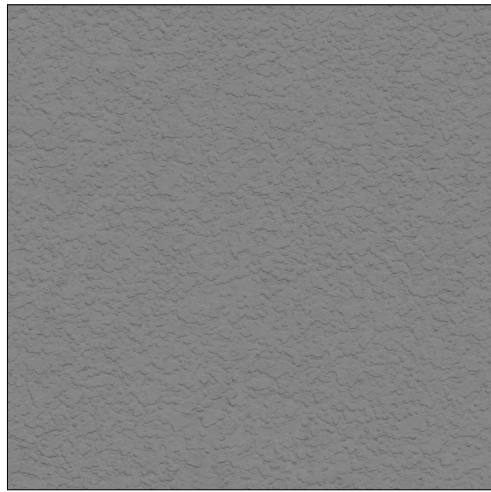
05- PROJECTING WINDOW FRAME



06- PERFORATED METAL PANEL



07- SMOOTH WHITE STUCCO



08- SMOOTH DARK GRAY STUCCO



09- OVERHEAD ROLLING DOOR

ARQUITECTONICA

2900 Oak Avenue, Miami, FL 33133
T 305.372.1812 F 305.372.1175

ALL DESIGNS INDICATED IN THESE DRAWINGS ARE PROPERTY OF ARQUITECTONICA INTERNATIONAL CORP. NO COPIES, TRANSMISSIONS, REPRODUCTIONS OR ELECTRONIC MANIPULATION OF ANY PORTION OF THESE DRAWINGS IN THE WHOLE OR IN PART ARE TO BE MADE WITHOUT THE EXPRESS OF WRITTEN AUTHORIZATION OF ARQUITECTONICA INTERNATIONAL CORP. DESIGN INTENT SHOWN IS SUBJECT TO REVIEW AND APPROVAL OF ALL APPLICABLE LOCAL AND GOVERNMENTAL AUTHORITIES HAVING JURISDICTION. ALL COPYRIGHTS RESERVED © 2019. THE DATA INCLUDED IN THIS STUDY IS CONCEPTUAL IN NATURE AND WILL CONTINUE TO BE MODIFIED THROUGHOUT THE COURSE OF THE PROJECTS DEVELOPMENT WITH THE EVENTUAL INTEGRATION OF STRUCTURAL, MEP AND LIFE SAFETY SYSTEMS. AS THESE ARE FURTHER REFINED, THE NUMBERS WILL BE ADJUSTED ACCORDINGLY.

FINAL SUBMITTAL

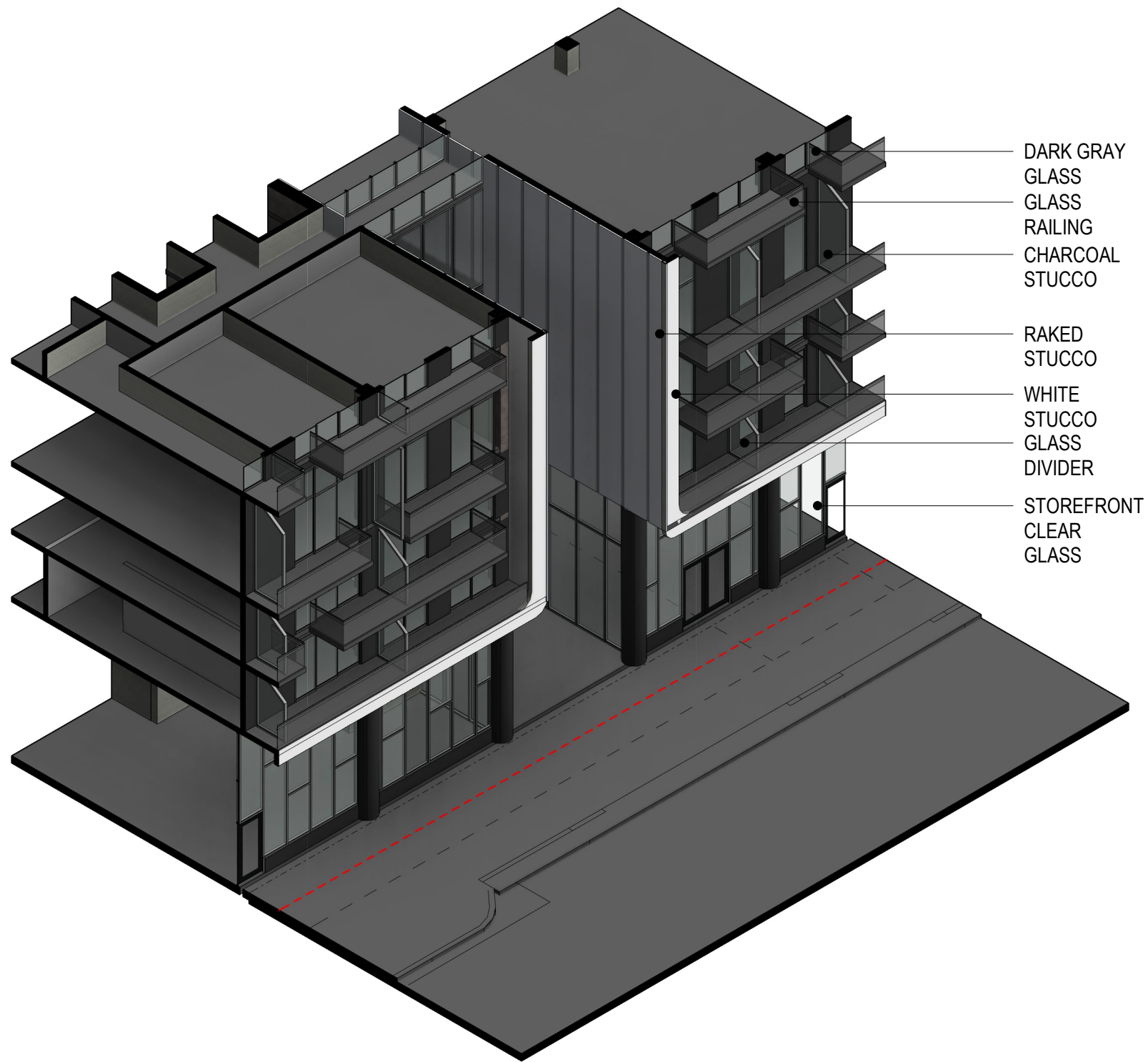
7140 ABBOTT AVE, MIAMI
BEACH, FL 33141

MATERIAL BOARD

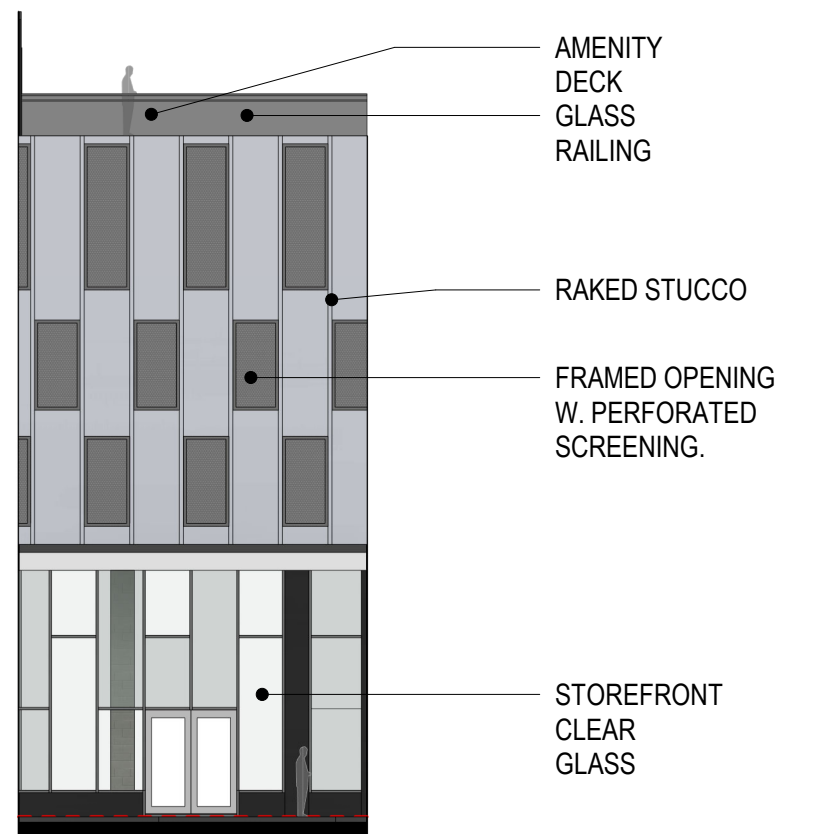
SCALE:

DATE:
02/10/20

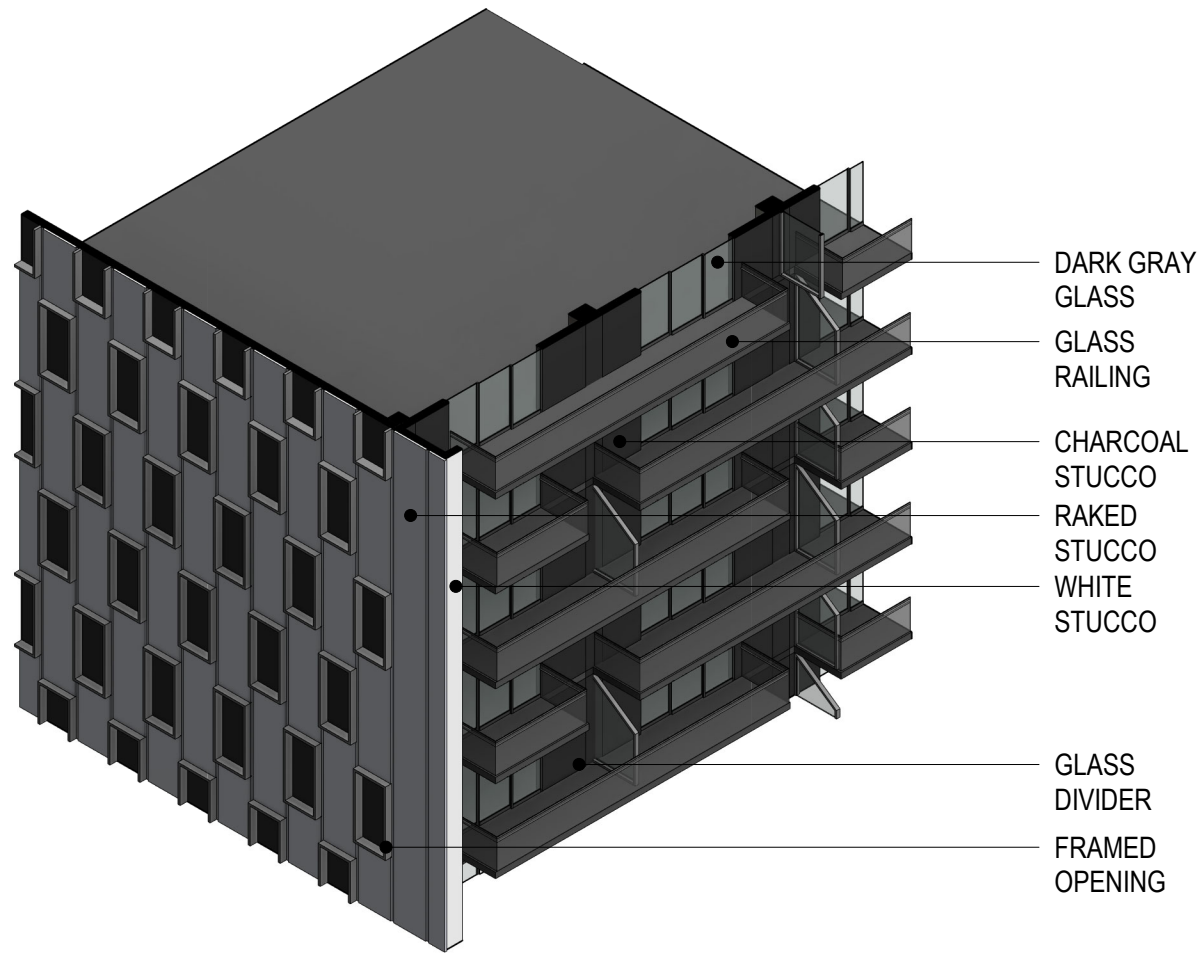
A3-03



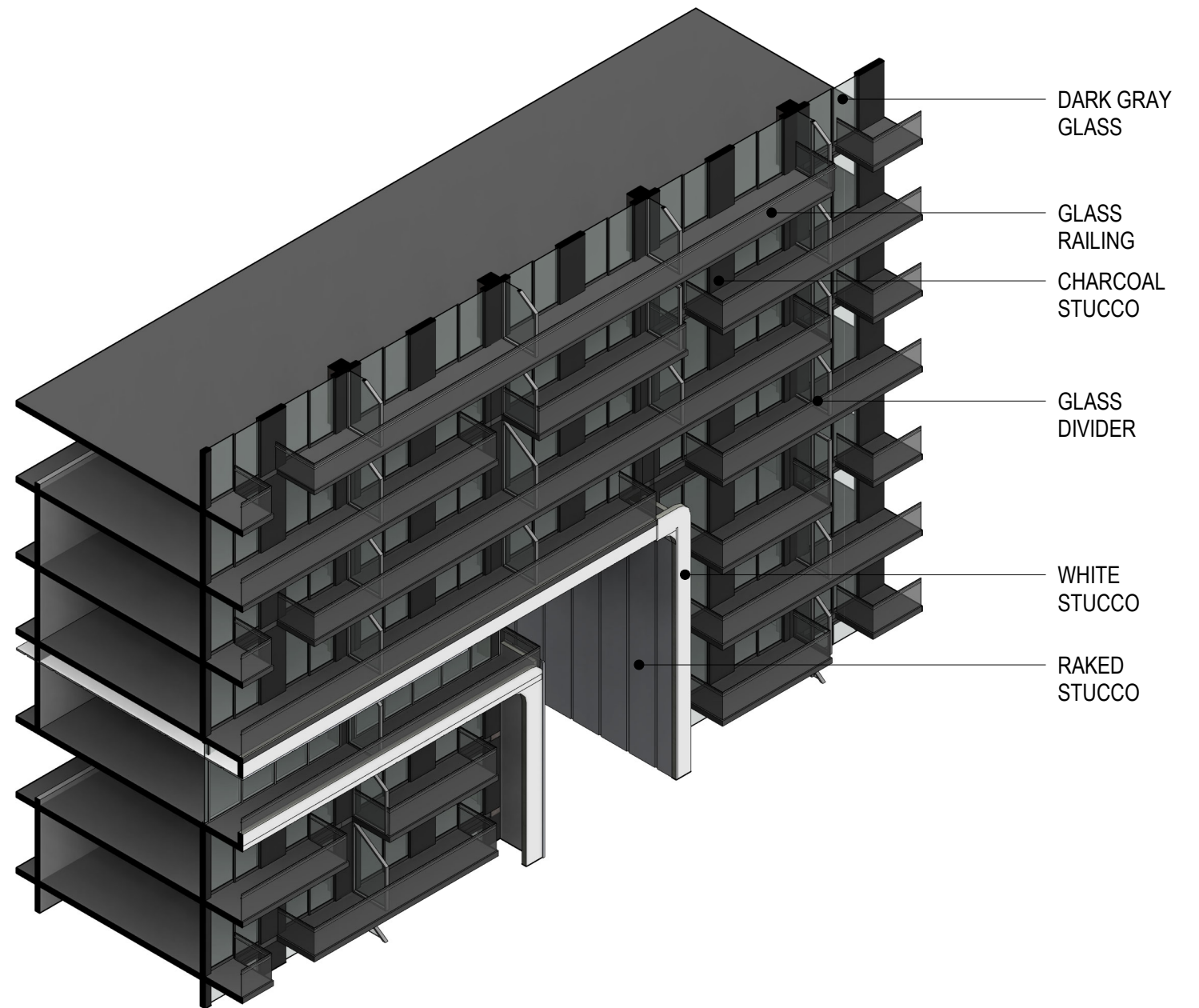
GROUND LEVEL (A STREET)



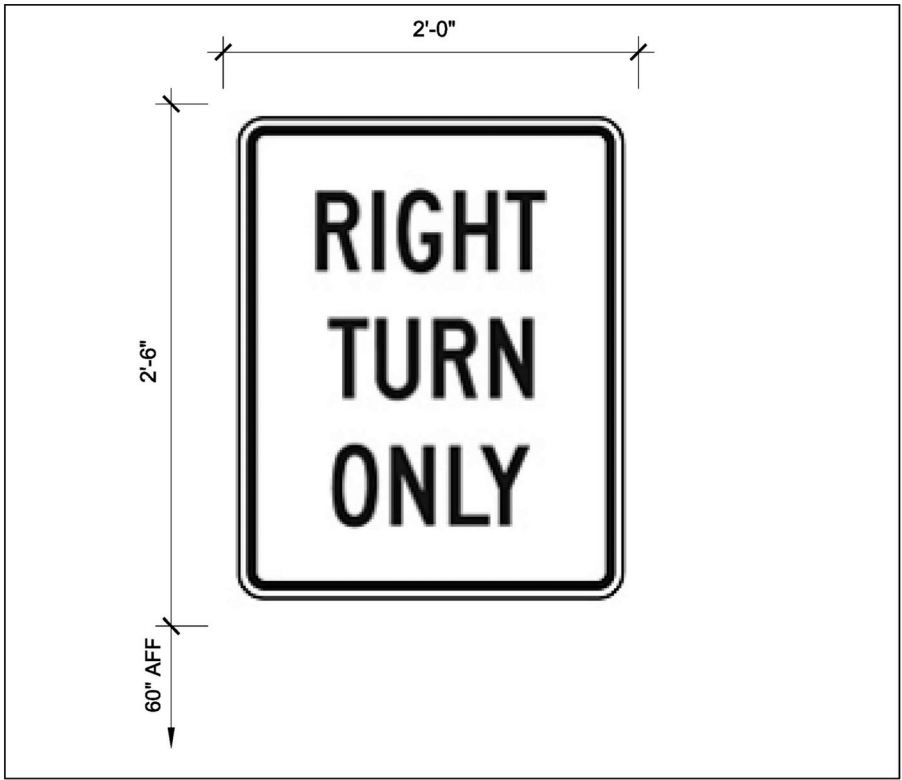
GROUND LEVEL (C STREET)



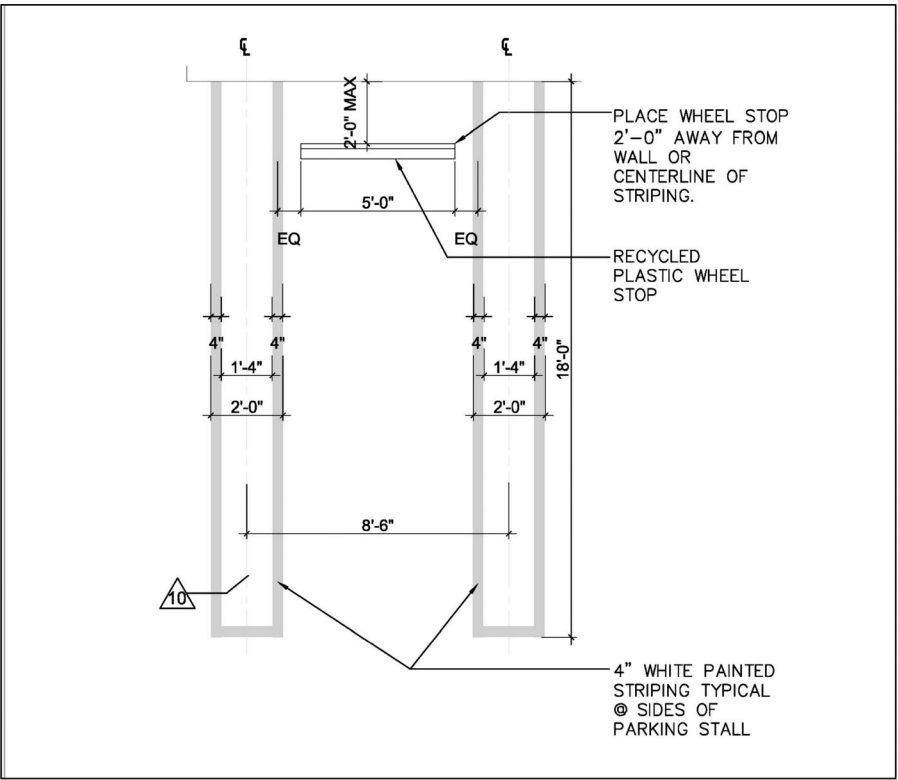
RESIDENTIAL LEVEL



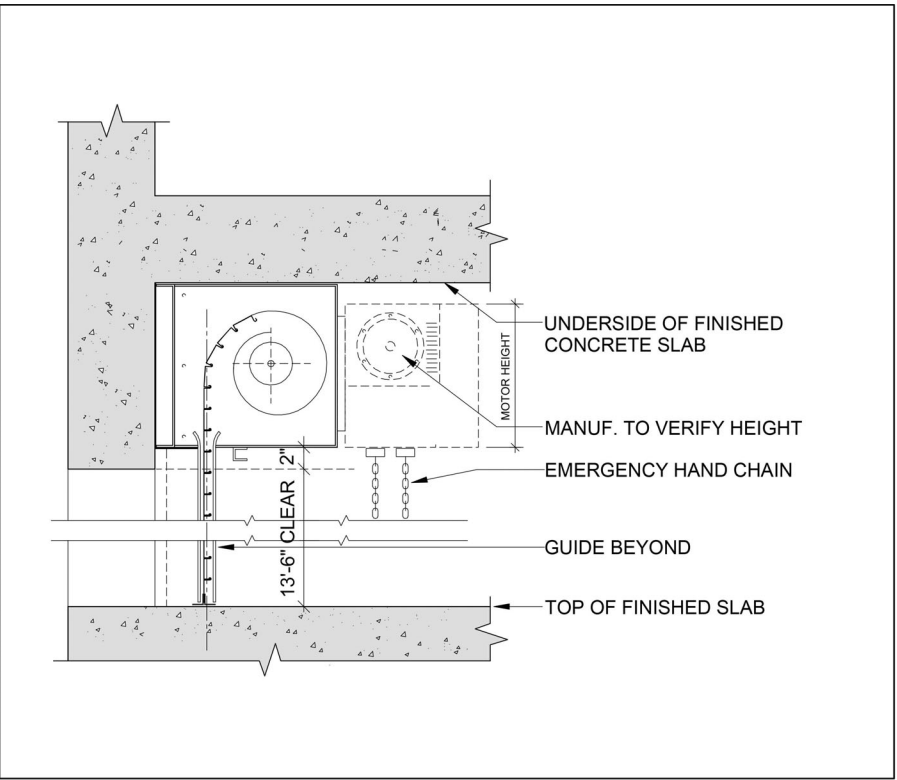
RESIDENTIAL LEVEL



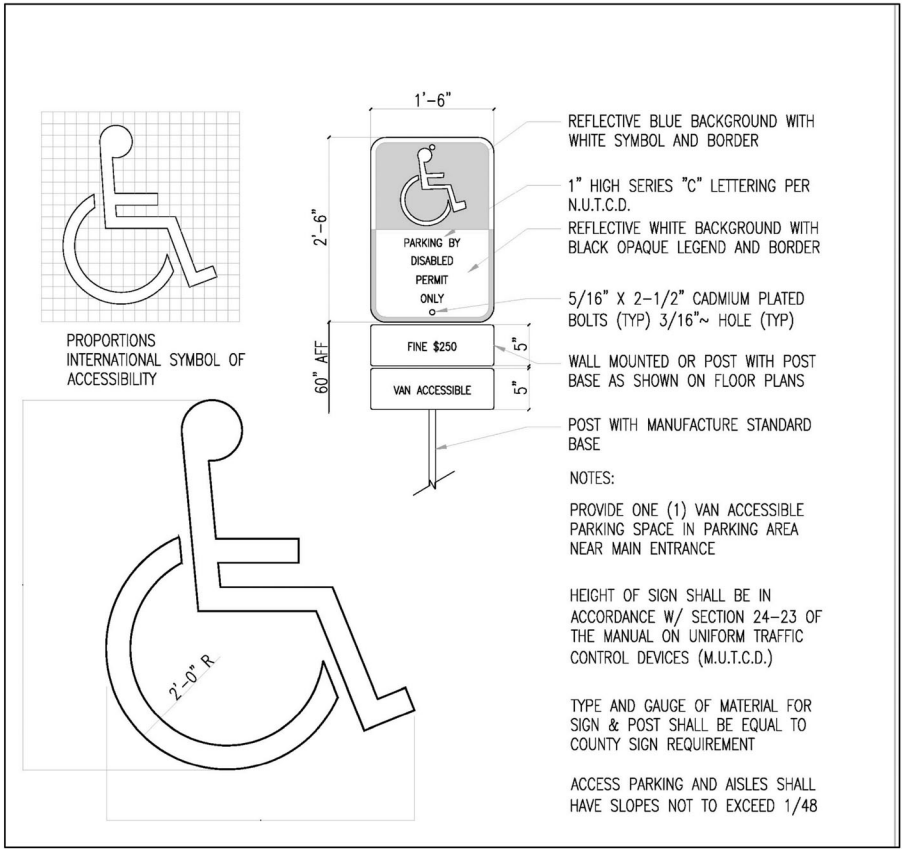
RIGHT TURN ONLY SIGNAGE



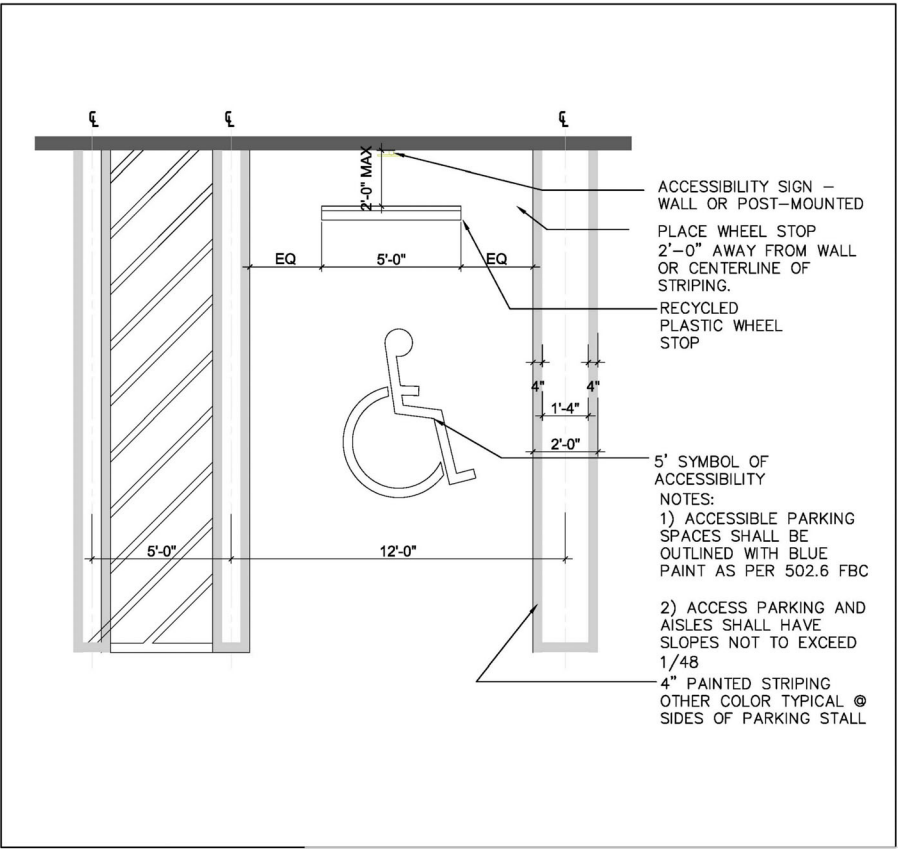
TYPICAL PARKING STALL



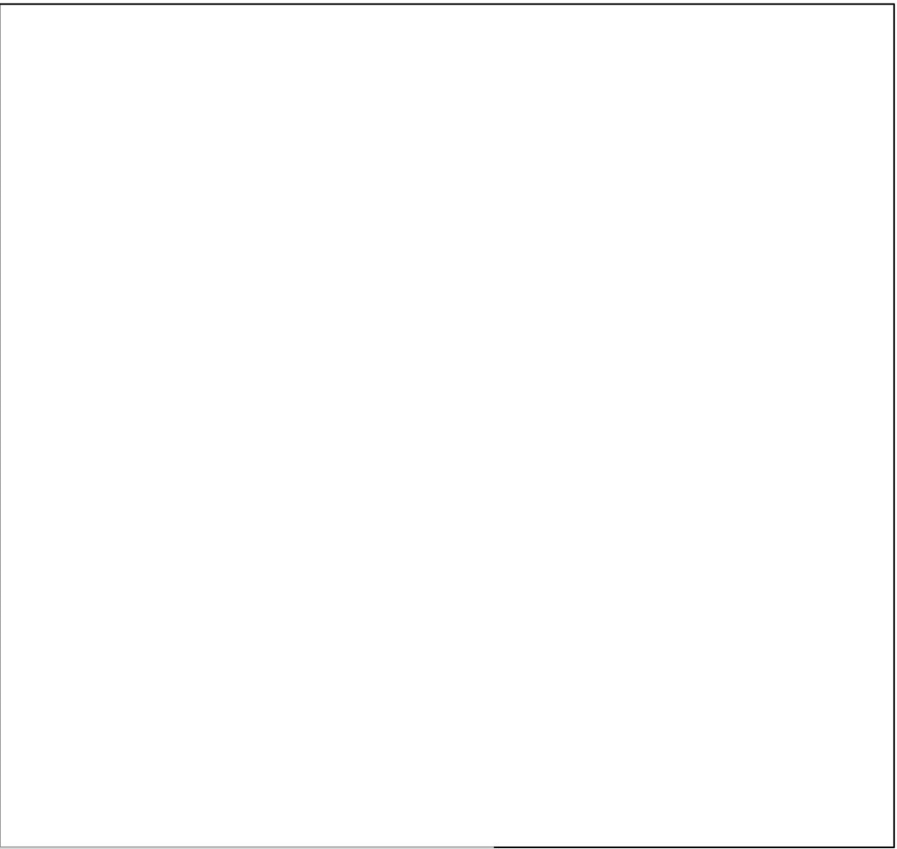
OVERHEAD COILING DOOR - HEAD SECTION



HC PARKING SIGNAGE

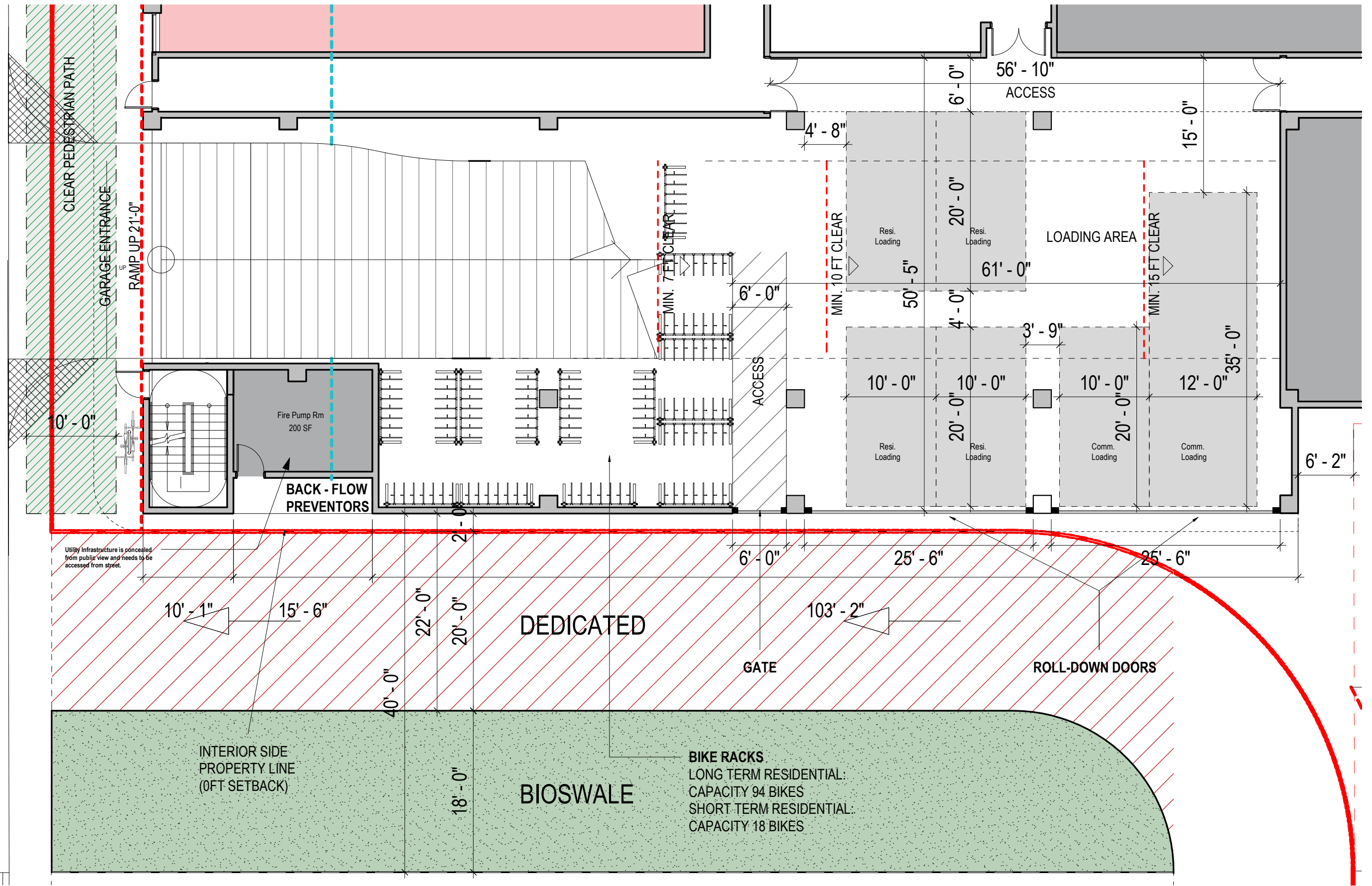


ACCESSIBLE PARKING STALL



NOT USED

BYRON AVE (CLASS C)



ARQUITECTONICA

2900 Oak Avenue, Miami, FL 33133
T 305.372.1812 F 305.372.1175

ALL DESIGNS INDICATED IN THESE DRAWINGS ARE PROPERTY OF ARQUITECTONICA INTERNATIONAL CORP. NO COPIES, TRANSMISSIONS, REPRODUCTIONS OR ELECTRONIC MANIPULATION OF ANY PORTION OF THESE DRAWINGS IN THE WHOLE OR IN PART ARE TO BE MADE WITHOUT THE EXPRESS OF WRITTEN AUTHORIZATION OF ARQUITECTONICA INTERNATIONAL CORP. DESIGN INTENT SHOWN IS SUBJECT TO REVIEW AND APPROVAL OF ALL APPLICABLE LOCAL AND GOVERNMENTAL AUTHORITIES HAVING JURISDICTION. ALL COPYRIGHTS RESERVED © 2019. THE DATA INCLUDED IN THIS STUDY IS CONCEPTUAL IN NATURE AND WILL CONTINUE TO BE MODIFIED THROUGHOUT THE COURSE OF THE PROJECTS DEVELOPMENT WITH THE EVENTUAL INTEGRATION OF STRUCTURAL, MEP AND LIFE SAFETY SYSTEMS. AS THESE ARE FURTHER REFINED, THE NUMBERS WILL BE ADJUSTED ACCORDINGLY.

FINAL SUBMITTAL

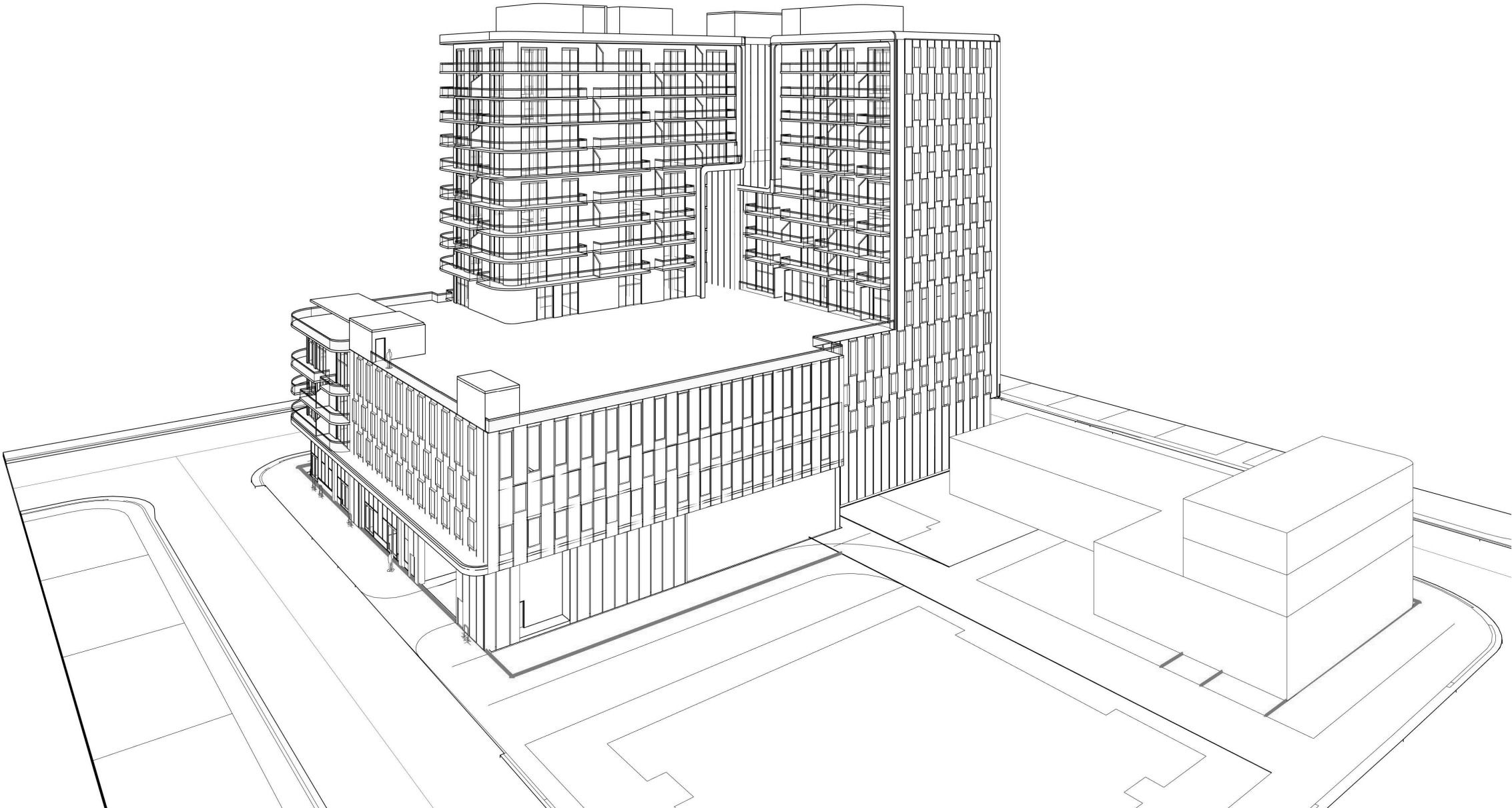
7140 ABBOTT AVE, MIAMI
BEACH, FL 33141

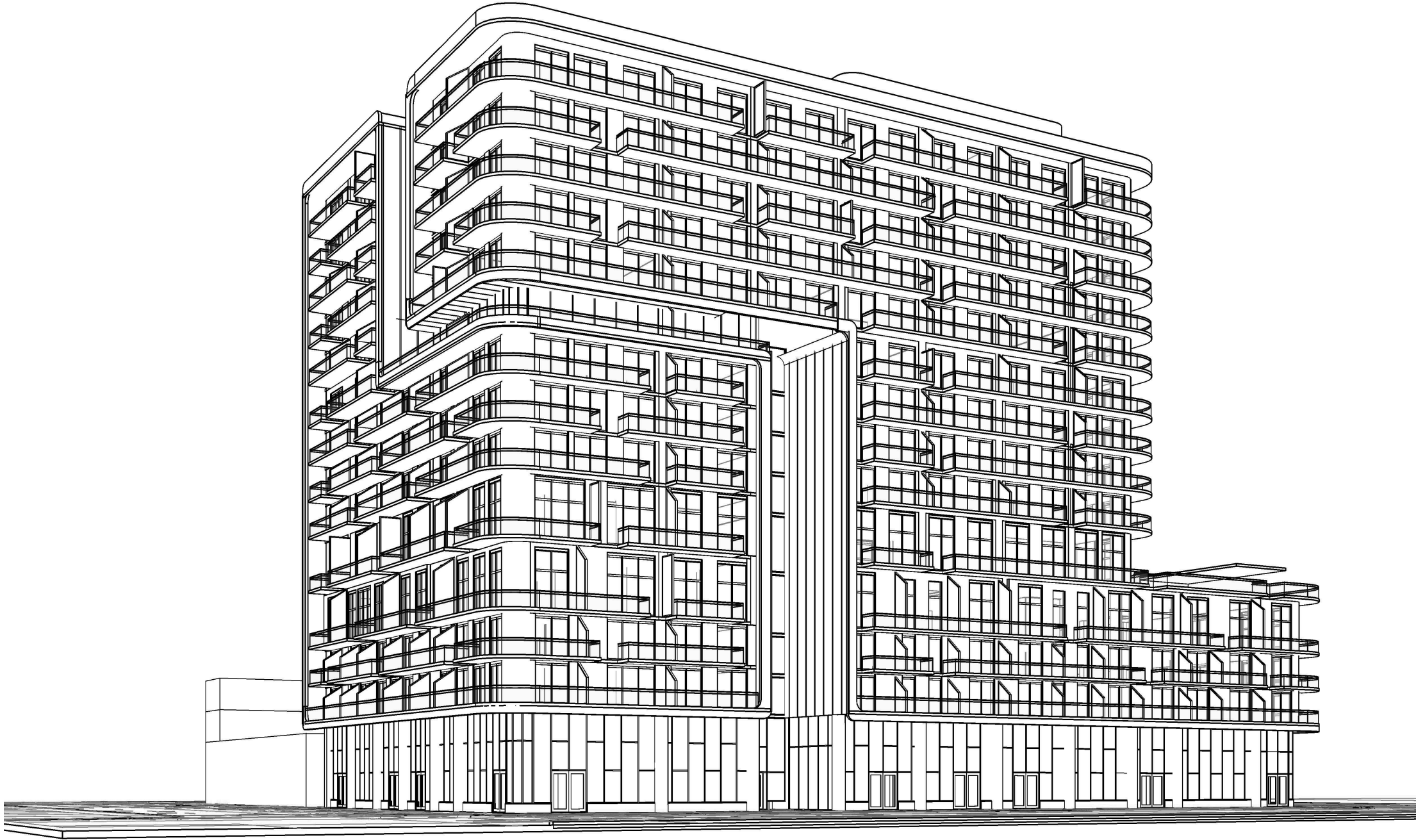
LOADING AREA PLAN

SCALE: 3/32" = 1'-0"

DATE:
02/10/20

43-07





TO BE UPDATED



ARQUITECTONICA
2900 Oak Avenue, Miami, FL 33133
T 305.372.1812 F 305.372.1175

ALL DESIGNS INDICATED IN THESE DRAWINGS ARE PROPERTY OF ARQUITECTONICA INTERNATIONAL CORP. NO COPIES, TRANSMISSIONS, REPRODUCTIONS OR ELECTRONIC MANIPULATION OF ANY PORTION OF THESE DRAWINGS IN THE WHOLE OR IN PART ARE TO BE MADE WITHOUT THE EXPRESS OF WRITTEN AUTHORIZATION OF ARQUITECTONICA INTERNATIONAL CORP. DESIGN INTENT SHOWN IS SUBJECT TO REVIEW AND APPROVAL OF ALL APPLICABLE LOCAL AND GOVERNMENTAL AUTHORITIES HAVING JURISDICTION. ALL COPYRIGHTS RESERVED © 2019. THE DATA INCLUDED IN THIS STUDY IS CONCEPTUAL IN NATURE AND WILL CONTINUE TO BE MODIFIED THROUGHOUT THE COURSE OF THE PROJECTS DEVELOPMENT WITH THE EVENTUAL INTEGRATION OF STRUCTURAL, MEP AND LIFE SAFETY SYSTEMS. AS THESE ARE FURTHER REFINED, THE NUMBERS WILL BE ADJUSTED ACCORDINGLY.

FINAL SUBMITTAL
7140 ABBOTT AVE, MIAMI
BEACH, FL 33141

RENDERING

SCALE:

DATE:
02/10/20

A4-03