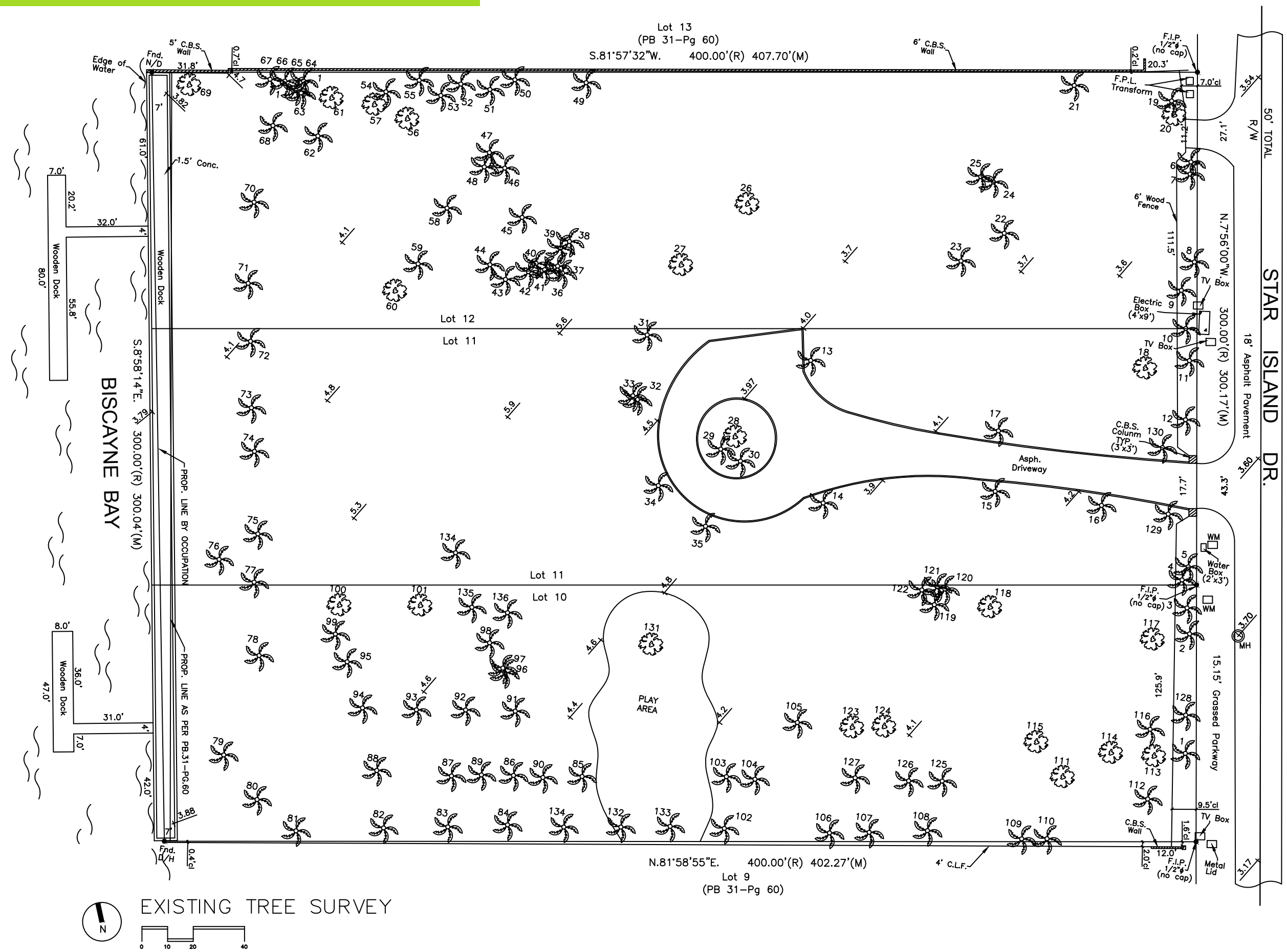


# LANDSCAPE PLAN - TREE SURVEY



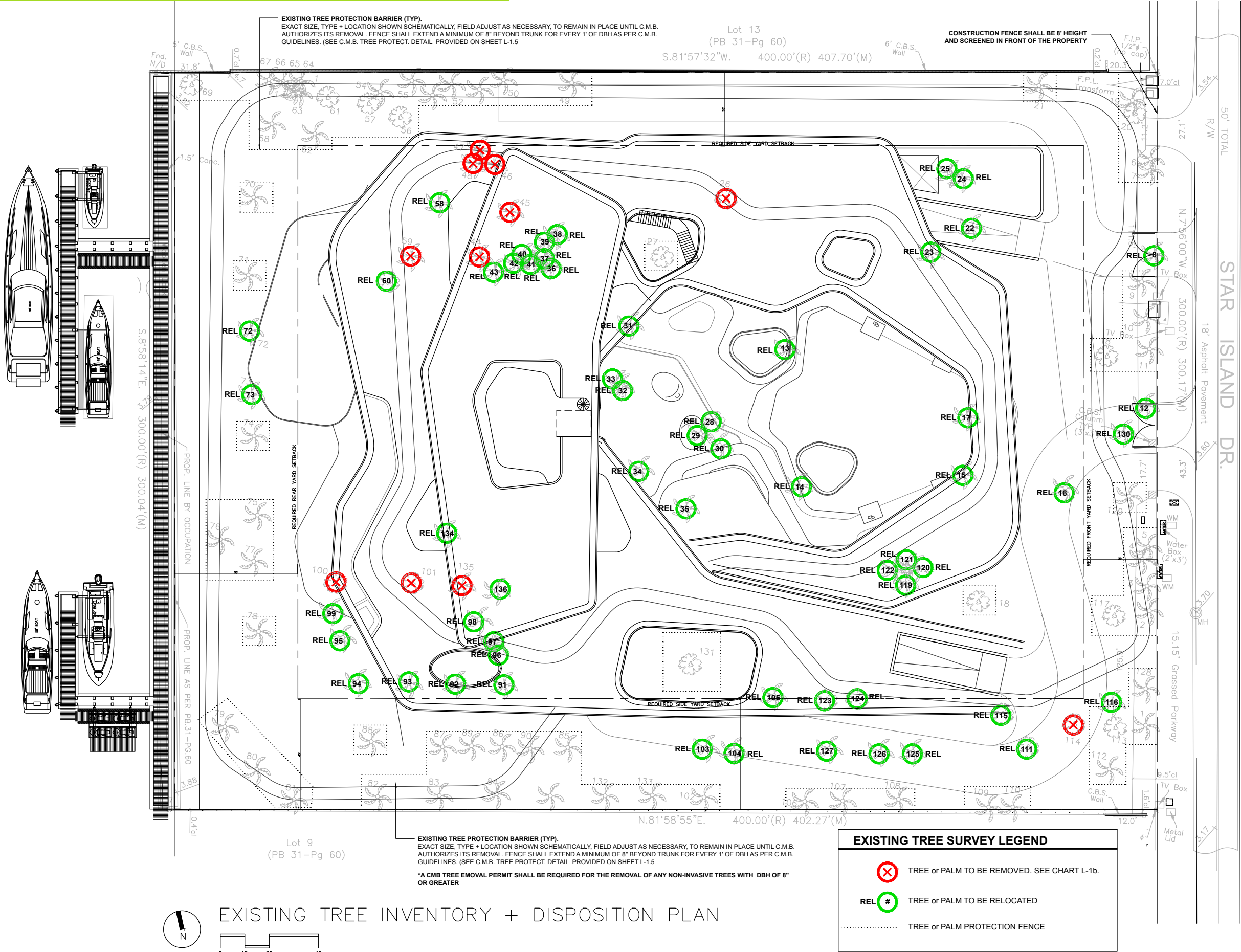
LANDSCAPE PLAN - TREE INVENTORY

EXISTING TREE INVENTORY - 11 STAR ISLAND

NUMBER	COMMON NAME	BOTANICAL NAME	D.B.H.	HEIGHT (FT)	SPREAD (FT)
1	ROYAL PALM	Roystonea elata	+/- 1.5'	+/- 50'	+/- 25'
2	ROYAL PALM	Roystonea elata	+/- 1.5'	+/- 50'	+/- 25'
3	ROYAL PALM	Roystonea elata	+/- 1.5'	+/- 50'	+/- 25'
4	ROYAL PALM	Roystonea elata	+/- 1.5'	+/- 50'	+/- 25'
5	ROYAL PALM	Roystonea elata	+/- 1.5'	+/- 50'	+/- 25'
6	ROYAL PALM	Roystonea elata	+/- 1.5'	+/- 50'	+/- 25'
7	ROYAL PALM	Roystonea elata	+/- 2.0'	+/- 50'	+/- 30'
8	CHINESE FAN PALM	Livistonia chinensis	+/- 1.0'	+/- 25'	+/- 15'
9	CHINESE FAN PALM	Livistonia chinensis	+/- 1.0'	+/- 25'	+/- 15'
10	ROYAL PALM	Roystonea elata	+/- 1.3'	+/- 60'	+/- 30'
11	ROYAL PALM	Roystonea elata	+/- 1.3'	+/- 60'	+/- 30'
12	ROYAL PALM	Roystonea elata	+/- 1.3'	+/- 60'	+/- 30'
13	ROYAL PALM	Roystonea elata	+/- 1.2'	+/- 45'	+/- 30'
14	ROYAL PALM	Roystonea elata	+/- 1.5'	+/- 60'	+/- 40'
15	ROYAL PALM	Roystonea elata	+/- 1.5'	+/- 60'	+/- 40'
16	ROYAL PALM	Roystonea elata	+/- 1.5'	+/- 60'	+/- 40'
17	ROYAL PALM	Roystonea elata	+/- 1.5'	+/- 60'	+/- 40'
18	ROYAL POINCIANA	Delonix regia	+/- 1.5'	+/- 30'	+/- 12'
19	ROYAL PALM	Roystonea elata	+/- 1.5'	+/- 40'	+/- 30'
20	LIVE OAK	Quercus virginiana	+/- 2.0'	+/- 30'	+/- 25'
21	CHINESE FAN PALM	Livistonia chinensis	+/- 1.2'	+/- 35'	+/- 12'
22	CHINESE FAN PALM	Livistonia chinensis	+/- 1.2'	+/- 35'	+/- 12'
23	CHINESE FAN PALM	Livistonia chinensis	+/- 1.2'	+/- 35'	+/- 12'
24	ROYAL PALM	Roystonea elata	+/- 1.4'	+/- 50'	+/- 25'
25	ROYAL PALM	Roystonea elata	+/- 1.4'	+/- 50'	+/- 25'
26	PONGAM TREE	Pongamia pinnata	+/- 2.0'	+/- 30'	+/- 30'
27	LIVE OAK	Quercus virginiana	+/- 3.0'	+/- 30'	+/- 30'
28	LIVE OAK	Quercus virginiana	+/- 3.0'	+/- 30'	+/- 40'
29	ROYAL PALM	Roystonea elata	+/- 1.3'	+/- 45'	+/- 25'
30	ROYAL PALM	Roystonea elata	+/- 1.3'	+/- 45'	+/- 25'
31	ROYAL PALM	Roystonea elata	+/- 1.5'	+/- 40'	+/- 30'
32	ROYAL PALM	Roystonea elata	+/- 1.5'	+/- 40'	+/- 30'
33	ROYAL PALM	Roystonea elata	+/- 1.5'	+/- 40'	+/- 30'
34	ROYAL PALM	Roystonea elata	+/- 1.5'	+/- 40'	+/- 30'
35	ROYAL PALM	Roystonea elata	+/- 1.5'	+/- 40'	+/- 30'
36	MONTGOMERY PALM	Veitchia montgomeryana	+/- 0.5'	+/- 30'	+/- 15'
37	MONTGOMERY PALM	Veitchia montgomeryana	+/- 0.5'	+/- 30'	+/- 15'
38	MONTGOMERY PALM	Veitchia montgomeryana	+/- 0.5'	+/- 30'	+/- 15'
39	MONTGOMERY PALM	Veitchia montgomeryana	+/- 0.5'	+/- 30'	+/- 15'
40	MONTGOMERY PALM	Veitchia montgomeryana	+/- 0.5'	+/- 30'	+/- 15'
41	MONTGOMERY PALM	Veitchia montgomeryana	+/- 0.5'	+/- 30'	+/- 15'
42	MONTGOMERY PALM	Veitchia montgomeryana	+/- 0.5'	+/- 30'	+/- 15'
43	MONTGOMERY PALM	Veitchia montgomeryana	+/- 0.5'	+/- 30'	+/- 15'
44	MEXICAN FAN PALM	Wahsingtonia robusta	+/- 0.6'	+/- 12'	+/- 12'
45	ALEXANDER PALM	Ptychosperma elegans	+/- 0.5'	+/- 25'	+/- 8'
46	RECLINATA DATE PALM	Phoenix reclinata	+/- 0.7'	+/- 12'	+/- 6'
47	RECLINATA DATE PALM	Phoenix reclinata	+/- 0.7'	+/- 12'	+/- 6'
48	RECLINATA DATE PALM	Phoenix reclinata	+/- 0.7'	+/- 12'	+/- 6'
49	ROYAL PALM	Roystonea elata	+/- 1.3'	+/- 40'	+/- 18'
50	ROYAL PALM	Roystonea elata	+/- 1.3'	+/- 40'	+/- 18'
51	ROYAL PALM	Roystonea elata	+/- 1.3'	+/- 50'	+/- 30'
52	ROYAL PALM	Roystonea elata	+/- 1.5'	+/- 50'	+/- 30'
53	ROYAL PALM	Roystonea elata	+/- 1.5'	+/- 50'	+/- 30'
54	ROYAL PALM	Roystonea elata	+/- 1.5'	+/- 50'	+/- 30'
55	ROYAL PALM	Roystonea elata	+/- 1.5'	+/- 50'	+/- 30'
56	MAHOGANY TREE	Swietenia mahagoni	+/- 1.5'	+/- 50'	+/- 30'
57	MAHOGANY TREE	Swietenia mahagoni	+/- 1.0'	+/- 25'	+/- 15'
58	ROYAL PALM	Roystonea elata	+/- 1.0'	+/- 25'	+/- 15'
59	MEXICAN FAN PALM	Wahsingtonia robusta	+/- 1.0'	+/- 15'	+/- 8'
60	LIVE OAK	Quercus virginiana	+/- 3.0'	+/- 35'	+/- 40'
61	LIVE OAK	Quercus virginiana	+/- 2.0'	+/- 25'	+/- 20'
62	COCONUT PALM	Cocos nucifera	+/- 1.5'	+/- 50'	+/- 25'
63	COCONUT PALM	Cocos nucifera	+/- 0.8'	+/- 40'	+/- 20'
64	ROYAL PALM	Roystonea elata	+/- 1.5'	+/- 20'	+/- 20'
65	ROYAL PALM	Roystonea elata	+/- 1.5'	+/- 20'	+/- 20'
66	ROYAL PALM	Roystonea elata	+/- 1.5'	+/- 20'	+/- 20'
67	ROYAL PALM	Roystonea elata	+/- 1.5'	+/- 20'	+/- 20'
68	ROYAL PALM	Roystonea elata	+/- 1.5'	+/- 20'	+/- 20'

NUMBER	COMMON NAME	BOTANICAL NAME	D.B.H.	HEIGHT (FT)	SPREAD (FT)
69	SEA GRAPE	Cocoloba uvifera	+/- 1.2'	+/- 20'	+/- 20'
70	COCONUT PALM	Cocos nucifera	+/- 0.8'	+/- 35'	+/- 18'
71	ROYAL PALM	Roystonea elata	+/- 1.8'	+/- 60'	+/- 30'
72	ROYAL PALM	Roystonea elata	+/- 0.8'	+/- 30'	+/- 20'
73	COCONUT PALM	Cocos nucifera	+/- 0.8'	+/- 30'	+/- 20'
74	ROYAL PALM	Roystonea elata	+/- 3.0'	+/- 30'	+/- 40'
75	COCONUT PALM	Cocos nucifera	+/- 0.3'	+/- 25'	+/- 20'
76	COCONUT PALM	Cocos nucifera	+/- 0.3'	+/- 25'	+/- 20'
77	COCONUT PALM	Cocos nucifera	+/- 0.3'	+/- 25'	+/- 20'
78	COCONUT PALM	Cocos nucifera	+/- 0.3'	+/- 25'	+/- 20'
79	COCONUT PALM	Cocos nucifera	+/- 0.3'	+/- 25'	+/- 20'
80	COCONUT PALM	Cocos nucifera	+/- 0.3'	+/- 25'	+/- 20'
81	ROYAL PALM	Roystonea elata	+/- 1.5'	+/- 20'	+/- 20'
82	ROYAL PALM	Roystonea elata	+/- 1.0'	+/- 35'	+/- 30'
83	ROYAL PALM	Roystonea elata	+/- 1.0'	+/- 35'	+/- 30'
84	ROYAL PALM	Roystonea elata	+/- 1.0'	+/- 35'	+/- 30'
85	COCONUT PALM	Cocos nucifera	+/- 1.0'	+/- 50'	+/- 40'
86	COCONUT PALM	Cocos nucifera	+/- 1.0'	+/- 50'	+/- 40'
87	COCONUT PALM	Cocos nucifera	+/- 1.0'	+/- 50'	+/- 40'
88	COCONUT PALM	Cocos nucifera	+/- 1.0'	+/- 50'	+/- 40'
89	ROYAL PALM	Roystonea elata	+/- 1.5'	+/- 45'	+/- 30'
90	ROYAL PALM	Roystonea elata	+/- 1.5'	+/- 45'	+/- 30'
91	CANARY ISLAND DATE PALM	Phoenix canariensis	+/- 1.5'	+/- 25'	+/- 18'
92	CANARY ISLAND DATE PALM	Phoenix canariensis	+/- 1.5'	+/- 25'	+/- 18'
93	CANARY ISLAND DATE PALM	Phoenix canariensis	+/- 1.5'	+/- 25'	+/- 18'
94	CANARY ISLAND DATE PALM	Phoenix canariensis	+/- 1.5'	+/- 25'	+/- 18'
95	ROYAL PALM	Roystonea elata	+/- 1.5'	+/- 25'	+/- 18'
96	ROYAL PALM	Roystonea elata	+/- 1.5'	+/- 25'	+/- 18'
97	ROYAL PALM	Roystonea elata	+/- 1.5'	+/- 50'	+/- 30'
98	ROYAL PALM	Roystonea elata	+/- 1.5'	+/- 50'	+/- 30'
99	ROYAL PALM	Roystonea elata	+/- 1.5'	+/- 50'	+/- 30'
100	SMALL LEAF CLUSIA	Clusia guttifera	+/- 1.3'	+/- 40'	+/- 18'
101	SMALL LEAF CLUSIA	Clusia guttifera	+/- 1.5'	+/- 50'	+/- 30'
102	ROYAL PALM	Roystonea elata	+/- 1.7'	+/- 30'	+/- 20'
103	RECLINATA DATE PALM	Phoenix reclinata	+/- 1.2'	+/- 25'	+/- 15'
104	RECLINATA DATE PALM	Phoenix reclinata	+/- 1.2'	+/- 25'	+/- 15'
105	RECLINATA DATE PALM	Phoenix reclinata	+/- 1.2'	+/- 25'	+/- 15'
106	ROYAL PALM	Roystonea elata	+/- 1.5'	+/- 35'	+/- 20'
107	ROYAL PALM	Roystonea elata	+/- 1.5'	+/- 35'	+/- 20'
108	ROYAL PALM	Roystonea elata	+/- 1.5'	+/- 35'	+/- 20'
109	ROYAL PALM	Roystonea elata	+/- 1.5'	+/- 35'	+/- 20'
110	ROYAL PALM	Roystonea elata	+/- 1.5'	+/- 35'	+/- 20'
111	GUMBO LIMBO	Busera simaruba	+/- 1.3'	+/- 75'	+/- 18'
112	RECLINATA DATE PALM	Phoenix reclinata	+/- 2.0'	+/- 30'	+/- 15'
113	MANGO	Mangifera indica	+/- 10.0'	+/- 25'	+/- 18'
114	EAR LEAF ACACIA	Acacia auriculiformis	+/- 0.7'	+/- 25'	+/- 12'
115	FRANGI PANI PLUMERIA	Plumeria acuminata	+/- 0.7'	+/- 12'	+/- 8'
116	COCONUT PALM	Cocos nucifera	+/- 1.0'	+/- 35'	+/- 18'
117	LIVE OAK	Quercus virginiana	+/- 3.0'	+/- 40'	+/- 50'
118	LIVE OAK	Quercus virginiana	+/- 3.0'	+/- 40'	+/- 50'
119	ROYAL PALM	Roystonea elata	+/- 1.7'	+/- 60'	+/- 40'
120	ROYAL PALM	Roystonea elata	+/- 1.7'	+/- 60'	+/- 40'
121	ROYAL PALM	Roystonea elata	+/- 1.7'	+/- 60'	+/- 40'
122	ROYAL PALM	Roystonea elata	+/- 1.7'	+/- 60'	+/- 40'
123	FRANGI PANI PLUMERIA	Plumeria acuminata	+/- 0.6'	+/- 12'	+/- 10'
124	BAOBOB TREE	Adansonia digitata	+/- 3.0'	+/- 25'	+/- 6'
125	RECLINATA DATE PALM	Phoenix reclinata	+/- 1.5'	+/- 25'	+/- 18'
126	ROYAL PALM	Roystonea elata	+/- 1.7'	+/- 50'	+/- 30'
127	CHINESE FAN PALM	Livistonia chinensis	+/- 0.7'	+/- 45'	+/- 15'
128	ROYAL PALM	Roystonea elata	+/- 1.5'	+/- 50'	+/- 25'
129	ROYAL PALM	Roystonea elata	+/- 1.3'	+/- 50'	+/- 20'
130	ROYAL PALM	Roystonea elata	+/- 1.3'	+/- 50'	+/- 20'
131	WEeping FIG	Ficus benjamina	+/- 1.3'	+/- 50'	+/- 20'
132	ROYAL PALM	Roystonea elata	+/- 1.3'	+/- 50'	+/- 20'
133	ROYAL PALM	Roystonea elata	+/- 1.3'	+/- 50'	+/- 20'
134	ROYAL PALM	Roystonea elata	+/- 1.3'	+/- 50'	+/- 20'
135	ROYAL PALM	Roystonea elata	+/- 1.3'	+/- 50'	+/- 20'
136	ROYAL PALM	Roystonea elata	+/- 1.3'	+/- 50'	+/- 20'

LANDSCAPE PLAN - TREE DISPOSITION PLAN





LANDSCAPE PLAN - TREE DISPOSITION SCHEDULE

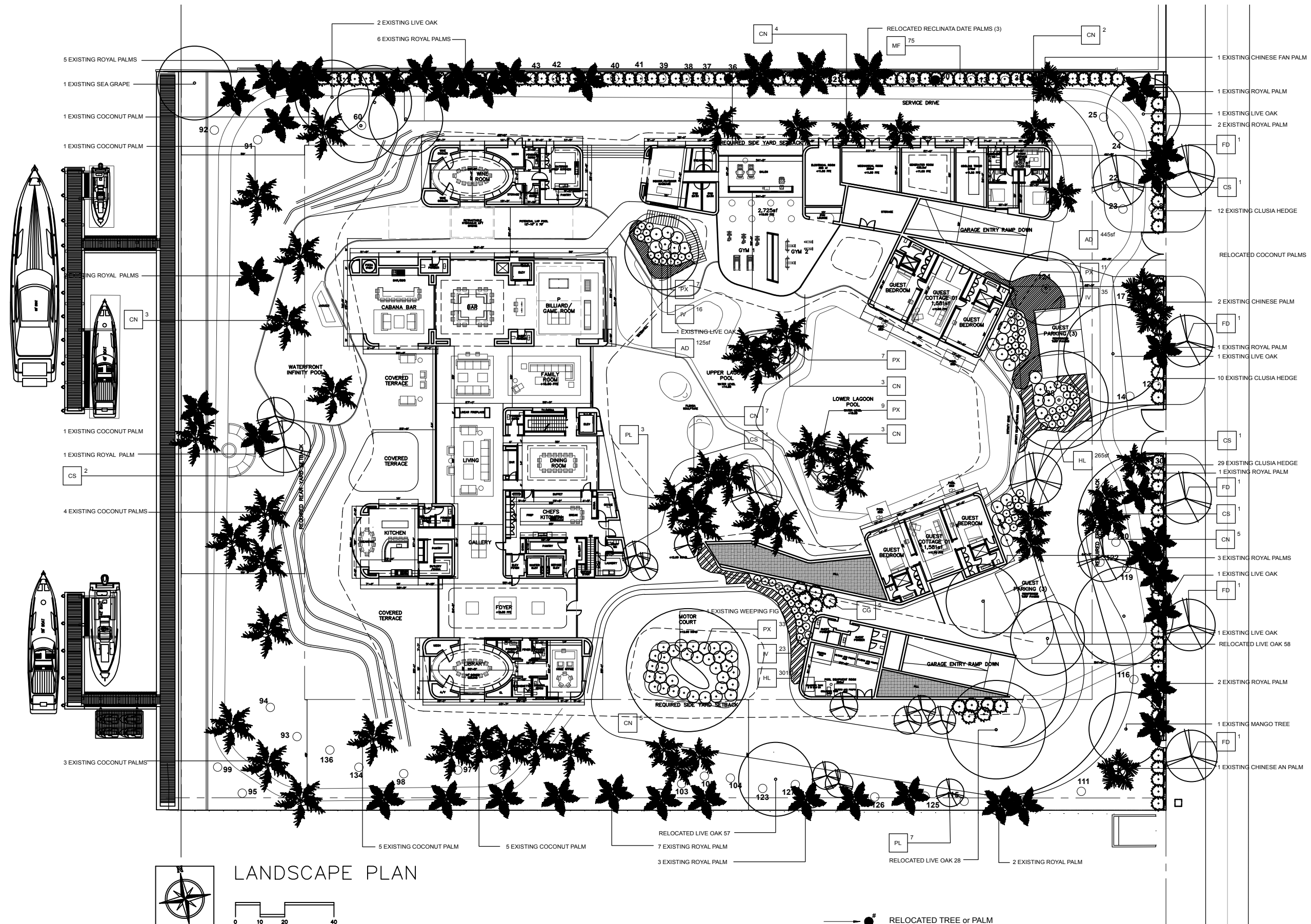
EXISTING TREE INVENTORY + DISPOSITION CHART - 11 STAR ISLAND							
NUMBER	COMMON NAME	BOTANICAL NAME	D.B.H.	HEIGHT (FT)	SPREAD (FT)	DISPOSITION	COMMENTS
1	ROYAL PALM	Roystonea elata	+/-1.5'	+/- 50'	+/- 25'	REMAIN	PRESERVE + PROTECT DURING CONSTRUCTION
2	ROYAL PALM	Roystonea elata	+/-1.5'	+/- 50'	+/- 25'	REMAIN	PRESERVE + PROTECT DURING CONSTRUCTION
3	ROYAL PALM	Roystonea elata	+/-1.5'	+/- 50'	+/- 25'	REMAIN	PRESERVE + PROTECT DURING CONSTRUCTION
4	ROYAL PALM	Roystonea elata	+/-1.5'	+/- 50'	+/- 25'	REMAIN	PRESERVE + PROTECT DURING CONSTRUCTION
5	ROYAL PALM	Roystonea elata	+/-1.5'	+/- 50'	+/- 25'	REMAIN	PRESERVE + PROTECT DURING CONSTRUCTION
6	ROYAL PALM	Roystonea elata	+/-1.5'	+/- 50'	+/- 25'	REMAIN	PRESERVE + PROTECT DURING CONSTRUCTION
7	ROYAL PALM	Roystonea elata	+/-2.0'	+/- 50'	+/- 30'	REMAIN	PRESERVE + PROTECT DURING CONSTRUCTION
8	CHINESE FAN PALM	Livistonia chinensis	+/-1.0'	+/- 25'	+/- 15'	RELOCATE	SEE PROPOSED NEW LOCATION
9	CHINESE FAN PALM	Livistonia chinensis	+/-1.0'	+/- 25'	+/- 15'	REMAIN	PRESERVE + PROTECT DURING CONSTRUCTION
10	ROYAL PALM	Roystonea elata	+/-1.3'	+/- 60'	+/- 30'	REMAIN	PRESERVE + PROTECT DURING CONSTRUCTION
11	ROYAL PALM	Roystonea elata	+/-1.3'	+/- 60'	+/- 30'	REMAIN	PRESERVE + PROTECT DURING CONSTRUCTION
12	ROYAL PALM	Roystonea elata	+/-1.3'	+/- 60'	+/- 30'	RELOCATE	SEE PROPOSED NEW LOCATION
13	ROYAL PALM	Roystonea elata	+/-1.2'	+/- 45'	+/- 30'	RELOCATE	SEE PROPOSED NEW LOCATION
14	ROYAL PALM	Roystonea elata	+/-1.5'	+/- 60'	+/- 40'	RELOCATE	SEE PROPOSED NEW LOCATION
15	ROYAL PALM	Roystonea elata	+/-1.5'	+/- 60'	+/- 40'	RELOCATE	SEE PROPOSED NEW LOCATION
16	ROYAL PALM	Roystonea elata	+/-1.5'	+/- 60'	+/- 40'	RELOCATE	SEE PROPOSED NEW LOCATION
17	ROYAL PALM	Roystonea elata	+/-1.5'	+/- 60'	+/- 40'	RELOCATE	SEE PROPOSED NEW LOCATION
18	ROYAL POINCIANA	Delonix regia	+/-1.5'	+/- 30'	+/- 12'	REMAIN	PRESERVE + PROTECT DURING CONSTRUCTION
19	ROYAL PALM	Roystonea elata	+/-1.5'	+/- 40'	+/- 30'	REMAIN	PRESERVE + PROTECT DURING CONSTRUCTION
20	LIVE OAK	Quercus virginiana	+/-2.0'	+/- 30'	+/- 25'	REMAIN	PRESERVE + PROTECT DURING CONSTRUCTION
21	CHINESE FAN PALM	Livistonia chinensis	+/-1.2'	+/- 35'	+/- 12'	REMAIN	PRESERVE + PROTECT DURING CONSTRUCTION
22	CHINESE FAN PALM	Livistonia chinensis	+/-1.2'	+/- 35'	+/- 12'	RELOCATE	SEE PROPOSED NEW LOCATION
23	CHINESE FAN PALM	Livistonia chinensis	+/-1.2'	+/- 35'	+/- 12'	RELOCATE	SEE PROPOSED NEW LOCATION
24	ROYAL PALM	Roystonea elata	+/-1.4'	+/- 50'	+/- 25'	RELOCATE	SEE PROPOSED NEW LOCATION
25	ROYAL PALM	Roystonea elata	+/-1.4'	+/- 50'	+/- 25'	RELOCATE	SEE PROPOSED NEW LOCATION
26	PONGAM TREE	Pongamia pinnata	+/-2.0'	+/- 30'	+/- 30'	REMOVE	IN CONFLICT WITH SITE, CONTROLLED SPECIES
27	LIVE OAK	Quercus virginiana	+/-3.0'	+/- 30'	+/- 30'	REMAIN	PRESERVE + PROTECT DURING CONSTRUCTION
28	LIVE OAK	Quercus virginiana	+/-3.0'	+/- 30'	+/- 40'	RELOCATE	SEE PROPOSED NEW LOCATION
29	ROYAL PALM	Roystonea elata	+/-1.3'	+/- 45'	+/- 25'	RELOCATE	SEE PROPOSED NEW LOCATION
30	ROYAL PALM	Roystonea elata	+/-1.3'	+/- 45'	+/- 25'	RELOCATE	SEE PROPOSED NEW LOCATION
31	ROYAL PALM	Roystonea elata	+/-1.5'	+/- 40'	+/- 30'	RELOCATE	SEE PROPOSED NEW LOCATION
32	ROYAL PALM	Roystonea elata	+/-1.5'	+/- 40'	+/- 30'	RELOCATE	SEE PROPOSED NEW LOCATION
33	ROYAL PALM	Roystonea elata	+/-1.5'	+/- 40'	+/- 30'	RELOCATE	SEE PROPOSED NEW LOCATION
34	ROYAL PALM	Roystonea elata	+/-1.5'	+/- 40'	+/- 30'	RELOCATE	SEE PROPOSED NEW LOCATION
35	ROYAL PALM	Roystonea elata	+/-1.5'	+/- 40'	+/- 30'	RELOCATE	SEE PROPOSED NEW LOCATION
36	MONTGOMERY PALM	Veitchia montgomeryana	+/-0.5'	+/- 30'	+/- 15'	RELOCATE	SEE PROPOSED NEW LOCATION
37	MONTGOMERY PALM	Veitchia montgomeryana	+/-0.5'	+/- 30'	+/- 15'	RELOCATE	SEE PROPOSED NEW LOCATION
38	MONTGOMERY PALM	Veitchia montgomeryana	+/-0.5'	+/- 30'	+/- 15'	RELOCATE	SEE PROPOSED NEW LOCATION
39	MONTGOMERY PALM	Veitchia montgomeryana	+/-0.5'	+/- 30'	+/- 15'	RELOCATE	SEE PROPOSED NEW LOCATION
40	MONTGOMERY PALM	Veitchia montgomeryana	+/-0.5'	+/- 30'	+/- 15'	RELOCATE	SEE PROPOSED NEW LOCATION
41	MONTGOMERY PALM	Veitchia montgomeryana	+/-0.5'	+/- 30'	+/- 15'	RELOCATE	SEE PROPOSED NEW LOCATION
42	MONTGOMERY PALM	Veitchia montgomeryana	+/-0.5'	+/- 30'	+/- 15'	RELOCATE	SEE PROPOSED NEW LOCATION
43	MONTGOMERY PALM	Veitchia montgomeryana	+/-0.5'	+/- 30'	+/- 15'	RELOCATE	SEE PROPOSED NEW LOCATION
44	MEXICAN FAN PALM	Wahsingtonia robusta	+/-0.6'	+/- 12'	+/- 12'	REMOVE	INVASIVE EXOTIC. REMOVE AS PER MB CODE
45	ALEXANDER PALM	Ptychosperma elegans	+/-0.5'	+/- 25'	+/- 8'	REMOVE	INVASIVE EXOTIC. REMOVE AS PER MB CODE
46	RECLINATA DATE PALM	Phoenix reclinata	+/-0.7'	+/- 12'	+/- 6'	REMOVE	IN CONFLICT WITH SITE PLAN
47	RECLINATA DATE PALM	Phoenix reclinata	+/-0.7'	+/- 12'	+/- 6'	REMOVE	IN CONFLICT WITH SITE PLAN
48	RECLINATA DATE PALM	Phoenix reclinata	+/-0.7'	+/- 12'	+/- 6'	REMOVE	IN CONFLICT WITH SITE PLAN
49	ROYAL PALM	Roystonea elata	+/-1.3'	+/- 40'	+/- 18'	REMAIN	PRESERVE + PROTECT DURING CONSTRUCTION
50	ROYAL PALM	Roystonea elata	+/-1.3'	+/- 40'	+/- 18'	REMAIN	PRESERVE + PROTECT DURING CONSTRUCTION
51	ROYAL PALM	Roystonea elata	+/-1.3'	+/- 50'	+/- 30'	REMAIN	PRESERVE + PROTECT DURING CONSTRUCTION
52	ROYAL PALM	Roystonea elata	+/-1.5'	+/- 50'	+/- 30'	REMAIN	PRESERVE + PROTECT DURING CONSTRUCTION
53	ROYAL PALM	Roystonea elata	+/-1.5'	+/- 50'	+/- 30'	REMAIN	PRESERVE + PROTECT DURING CONSTRUCTION
54	ROYAL PALM	Roystonea elata	+/-1.5'	+/- 50'	+/- 30'	REMAIN	PRESERVE + PROTECT DURING CONSTRUCTION
55	ROYAL PALM	Roystonea elata	+/-1.5'	+/- 50'	+/- 30'	REMAIN	PRESERVE + PROTECT DURING CONSTRUCTION
56	MAHOGANY TREE	Swietenia mahagoni	+/-1.5'	+/- 50'	+/- 30'	REMAIN	PRESERVE + PROTECT DURING CONSTRUCTION
57	MAHOGANY TREE	Swietenia mahagoni	+/-1.0'	+/- 25'	+/- 15'	REMAIN	PRESERVE + PROTECT DURING CONSTRUCTION
58	ROYAL PALM	Roystonea elata	+/-1.0'	+/- 25'	+/- 15'	RELOCATE	SEE PROPOSED NEW LOCATION
59	MEXICAN FAN PALM	Wahsingtonia robusta	+/-1.0'	+/- 15'	+/- 8'	REMOVE	IN CONFLICT WITH SITE PLAN
60	LIVE OAK	Quercus virginiana	+/-3.0'	+/- 35'	+/- 40'	RELOCATE	SEE PROPOSED NEW LOCATION
61	LIVE OAK	Quercus virginiana	+/-2.0'	+/- 25'	+/- 20'	REMAIN	PRESERVE + PROTECT DURING CONSTRUCTION
62	COCONUT PALM	Cocos nucifera	+/-1.5'	+/- 50'	+/- 25'	REMAIN	PRESERVE + PROTECT DURING CONSTRUCTION
63	COCONUT PALM	Cocos nucifera	+/-0.8'	+/- 40'	+/- 20'	REMAIN	PRESERVE + PROTECT DURING CONSTRUCTION
64	ROYAL PALM	Roystonea elata	+/-1.5'	+/- 20'	+/- 20'	REMAIN	PRESERVE + PROTECT DURING CONSTRUCTION
65	ROYAL PALM	Roystonea elata	+/-1.5'	+/- 20'	+/- 20'	REMAIN	PRESERVE + PROTECT DURING CONSTRUCTION
66	ROYAL PALM	Roystonea elata	+/-1.5'	+/- 20'	+/- 20'	REMAIN	PRESERVE + PROTECT DURING CONSTRUCTION
67	ROYAL PALM	Roystonea elata	+/-1.5'	+/- 20'	+/- 20'	REMAIN	PRESERVE + PROTECT DURING CONSTRUCTION

C.M.B. CHAPTER 46, DIVISION 2 - TREE INVENTORY + DISPOSITION PLAN NOTES
1. EXISTING TREE, PALM, AND VEGETATION INFORMATION AS INDICATED HAS BEEN PREPARED AS AN OVERLAY ON THE SURVEY PREPARED BY AMERICAN SERVICES OF MIAMI CORP, DATED APRIL 20, 2016
2. THE OWNER RESERVES THE RIGHT TO REMOVE ANY VEGETATION NOT LOCATED WITHIN THE CITY R.O.W. w/ a D.B.H. OF LESS THAN 8" WITHOUT OBTAINING A TREE REMOVAL PERMIT.
3. RELOCATED TREES AND PALMS REQUIRE TEMPORARY IRRIGATION UNTIL ESTABLISHED. LANDSCAPE CONTRACTOR TO PROVIDE TEMPORARY IRRIGATION SHOP DRAWING TO OWNER + LAND. ARCH. FOR REVIEW + APPROVAL. ALL EXISTING TREES + PALMS ARE MATURE AND ARE CURRENTLY THRIVING WITHOUT SUPPLEMENTAL IRRIGATION WATER.

68	ROYAL PALM	Roystonea elata	+/-1.5'	+/- 20'	+/- 20'	REMAIN	PRESERVE + PROTECT DURING CONSTRU
69	SEA GRAPE	Coccoloba uvifera	+/-1.2'	+/- 20'	+/- 20'	REMAIN	PRESERVE + PROTECT DURING CONSTRU
70	COCONUT PALM	Cocos nucifera	+/-0.8'	+/- 35'	+/- 18'	REMAIN	PRESERVE + PROTECT DURING CONSTRU
71	ROYAL PALM	Roystonea elata	+/-1.8'	+/- 60'	+/- 30'	REMAIN	PRESERVE + PROTECT DURING CONSTRU
72	ROYAL PALM	Roystonea elata	+/-0.8'	+/- 30'	+/- 20'	RELOCATE	SEE PROPOSED NEW LOCATION
73	COCONUT PALM	Cocos nucifera	+/-0.8'	+/- 30'	+/- 20'	RELOCATE	SEE PROPOSED NEW LOCATION
74	ROYAL PALM	Roystonea elata	+/-3.0'	+/- 30'	+/- 40'	REMAIN	PRESERVE + PROTECT DURING CONSTRU
75	COCONUT PALM	Cocos nucifera	+/-0.3'	+/- 25'	+/- 20'	REMAIN	PRESERVE + PROTECT DURING CONSTRU
76	COCONUT PALM	Cocos nucifera	+/-0.3'	+/- 25'	+/- 20'	REMAIN	PRESERVE + PROTECT DURING CONSTRU
77	COCONUT PALM	Cocos nucifera	+/-0.3'	+/- 25'	+/- 20'	REMAIN	PRESERVE + PROTECT DURING CONSTRU
78	COCONUT PALM	Cocos nucifera	+/-0.3'	+/- 25'	+/- 20'	REMAIN	PRESERVE + PROTECT DURING CONSTRU
79	COCONUT PALM	Cocos nucifera	+/-0.3'	+/- 25'	+/- 20'	REMAIN	PRESERVE + PROTECT DURING CONSTRU
80	COCONUT PALM	Cocos nucifera	+/-0.3'	+/- 25'	+/- 20'	REMAIN	PRESERVE + PROTECT DURING CONSTRU
81	ROYAL PALM	Roystonea elata	+/-1.5'	+/- 20'	+/- 20'	REMAIN	PRESERVE + PROTECT DURING CONSTRU
82	ROYAL PALM	Roystonea elata	+/-1.0'	+/- 35'	+/- 30'	REMAIN	PRESERVE + PROTECT DURING CONSTRU
83	ROYAL PALM	Roystonea elata	+/-1.0'	+/- 35'	+/- 30'	REMAIN	PRESERVE + PROTECT DURING CONSTRU
84	ROYAL PALM	Roystonea elata	+/-1.0'	+/- 35'	+/- 30'	REMAIN	PRESERVE + PROTECT DURING CONSTRU
85	COCONUT PALM	Cocos nucifera	+/-1.0'	+/- 50'	+/- 40'	REMAIN	PRESERVE + PROTECT DURING CONSTRU
86	COCONUT PALM	Cocos nucifera	+/-1.0'	+/- 50'	+/- 40'	REMAIN	PRESERVE + PROTECT DURING CONSTRU
87	COCONUT PALM	Cocos nucifera	+/-1.0'	+/- 50'	+/- 40'	REMAIN	PRESERVE + PROTECT DURING CONSTRU
88	COCONUT PALM	Cocos nucifera	+/-1.0'	+/- 50'	+/- 40'	REMAIN	PRESERVE + PROTECT DURING CONSTRU
89	ROYAL PALM	Roystonea elata	+/-1.5'	+/- 45'	+/- 30'	REMAIN	PRESERVE + PROTECT DURING CONSTRU
90	ROYAL PALM	Roystonea elata	+/-1.5'	+/- 45'	+/- 30'	REMAIN	PRESERVE + PROTECT DURING CONSTRU
91	CANARY ISLAND DATE PALM	Phoenix canariensis	+/-1.5'	+/- 25'	+/- 18'	RELOCATE	SEE PROPOSED NEW LOCATION
92	CANARY ISLAND DATE PALM	Phoenix canariensis	+/-1.5'	+/- 25'	+/- 18'	RELOCATE	SEE PROPOSED NEW LOCATION
93	CANARY ISLAND DATE PALM	Phoenix canariensis	+/-1.5'	+/- 25'	+/- 18'	RELOCATE	SEE PROPOSED NEW LOCATION
94	CANARY ISLAND DATE PALM	Phoenix canariensis	+/-1.5'	+/- 25'	+/- 18'	RELOCATE	SEE PROPOSED NEW LOCATION
95	ROYAL PALM	Roystonea elata	+/-1.5'	+/- 25'	+/- 18'	RELOCATE	SEE PROPOSED NEW LOCATION
96	ROYAL PALM	Roystonea elata	+/-1.5'	+/- 25'	+/- 18'	RELOCATE	SEE PROPOSED NEW LOCATION
97	ROYAL PALM	Roystonea elata	+/-1.5'	+/- 50'	+/- 30'	RELOCATE	SEE PROPOSED NEW LOCATION
98	ROYAL PALM	Roystonea elata	+/-1.5'	+/- 50'	+/- 30'	RELOCATE	SEE PROPOSED NEW LOCATION
99	ROYAL PALM	Roystonea elata	+/-1.5'	+/- 50'	+/- 30'	RELOCATE	SEE PROPOSED NEW LOCATION
100	SMALL LEAF CLUSIA	Clusia guttifera	+/-1.3'	+/- 40'	+/- 18'	REMOVE	IN CONFLICT WITH SITE, CONTROLLED SP
101	SMALL LEAF CLUSIA	Clusia guttifera	+/-1.5'	+/- 50'	+/- 30'	REMOVE	IN CONFLICT WITH SITE, CONTROLLED SP
102	ROYAL PALM	Roystonea elata	+/-1.7'	+/- 30'	+/- 20'	REMAIN	PRESERVE + PROTECT DURING CONSTRU
103	RECLINATA DATE PALM	Phoenix reclinata	+/-1.2'	+/- 25'	+/- 15'	RELOCATE	SEE PROPOSED NEW LOCATION
104	RECLINATA DATE PALM	Phoenix reclinata	+/-1.2'	+/- 25'	+/- 15'	RELOCATE	SEE PROPOSED NEW LOCATION
105	RECLINATA DATE PALM	Phoenix reclinata	+/-1.2'	+/- 25'	+/- 15'	RELOCATE	SEE PROPOSED NEW LOCATION
106	ROYAL PALM	Roystonea elata	+/-1.5'	+/- 35'	+/- 20'	REMAIN	PRESERVE + PROTECT DURING CONSTRU
107	ROYAL PALM	Roystonea elata	+/-1.5'	+/- 35'	+/- 20'	REMAIN	PRESERVE + PROTECT DURING CONSTRU
108	ROYAL PALM	Roystonea elata	+/-1.5'	+/- 35'	+/- 20'	REMAIN	PRESERVE + PROTECT DURING CONSTRU
109	ROYAL PALM	Roystonea elata	+/-1.5'	+/- 35'	+/- 20'	REMAIN	PRESERVE + PROTECT DURING CONSTRU
110	ROYAL PALM	Roystonea elata	+/-1.5'	+/- 35'	+/- 20'	REMAIN	PRESERVE + PROTECT DURING CONSTRU
111	GUMBO LIMBO	Busera simaruba	+/-1.3'	+/- 75'	+/- 18'	RELOCATE	SEE PROPOSED NEW LOCATION
112	RECLINATA DATE PALM	Phoenix reclinata	+/-2.0'	+/- 30'	+/- 15'	REMAIN	PRESERVE + PROTECT DURING CONSTRU
113	MANGO	Mangifera indica	+/-10.0'	+/- 25'	+/- 18'	REMAIN	PRESERVE + PROTECT DURING CONSTRU
114	EAR LEAF ACACIA	Acacia auriculiformis	+/-0.7'	+/- 25'	+/- 12'	REMOVE	PROHIBITED SPECIES
115	FRANGI PANI PLUMERIA	Plumeria acuminata	+/-0.7'	+/- 12'	+/- 8'	RELOCATE	SEE PROPOSED NEW LOCATION
116	COCONUT PALM	Cocos nucifera	+/-1.0'	+/- 35'	+/- 18'	RELOCATE	SEE PROPOSED NEW LOCATION
117	LIVE OAK	Quercus virginiana	+/-3.0'	+/- 40'	+/- 50'	REMAIN	PRESERVE + PROTECT DURING CONSTRU
118	LIVE OAK	Quercus virginiana	+/-3.0'	+/- 40'	+/- 50'	REMAIN	PRESERVE + PROTECT DURING CONSTRU
119	ROYAL PALM	Roystonea elata	+/-1.7'	+/- 60'	+/- 40'	RELOCATE	SEE PROPOSED NEW LOCATION
120	ROYAL PALM	Roystonea elata	+/-1.7'	+/- 60'	+/- 40'	RELOCATE	SEE PROPOSED NEW LOCATION
121	ROYAL PALM	Roystonea elata	+/-1.7'	+/- 60'	+/- 40'	RELOCATE	SEE PROPOSED NEW LOCATION
122	ROYAL PALM	Roystonea elata	+/-1.7'	+/- 60'	+/- 40'	RELOCATE	SEE PROPOSED NEW LOCATION
123	FRANGI PANI PLUMERIA	Plumeria acuminata	+/-0.6'	+/- 12'	+/- 10'	RELOCATE	SEE PROPOSED NEW LOCATION
124	BAOBAB TREE	Adansonia digitata	+/-3.0'	+/- 25'	+/- 6'	REMAIN	PRESERVE + PROTECT DURING CONSTRU
125	RECLINATA DATE PALM	Phoenix reclinata	+/-1.5'	+/- 25'	+/- 18'	RELOCATE	SEE PROPOSED NEW LOCATION
126	ROYAL PALM	Roystonea elata	+/-1.7'	+/- 50'	+/- 30'	RELOCATE	SEE PROPOSED NEW LOCATION
127	CHINESE FAN PALM	Livistonia chinensis	+/-0.7'	+/- 45'	+/- 15'	RELOCATE	SEE PROPOSED NEW LOCATION
128	ROYAL PALM	Roystonea elata	+/-1.5'	+/- 50'	+/- 25'	REMAIN	PRESERVE + PROTECT DURING CONSTRU
129	ROYAL PALM	Roystonea elata	+/-1.3'	+/- 50'	+/- 20'	REMAIN	PRESERVE + PROTECT DURING CONSTRU
130	ROYAL PALM	Roystonea elata	+/-1.3'	+/- 50'	+/- 20'	RELOCATE	SEE PROPOSED NEW LOCATION
131	WEeping FIG	Ficus benjamina	+/-1.3'	+/- 50'	+/- 20'	REMAIN	PRESERVE + PROTECT DURING CONSTRU
132	ROYAL PALM	Roystonea elata	+/-1.3'	+/- 50'	+/- 20'	REMAIN	PRESERVE + PROTECT DURING CONSTRU
133	ROYAL PALM	Roystonea elata	+/-1.3'	+/- 50'	+/- 20'	REMAIN	PRESERVE + PROTECT DURING CONSTRU
134	ROYAL PALM	Roystonea elata	+/-1.3'	+/- 50'	+/- 20'	RELOCATE	SEE PROPOSED NEW LOCATION
135	ROYAL PALM	Roystonea elata	+/-1.3'	+/- 50'	+/- 20'	RELOCATE	SEE PROPOSED NEW LOCATION
136	ROYAL PALM	Roystonea elata	+/-1.3'	+/- 50'	+/- 20'	RELOCATE	SEE PROPOSED NEW LOCATION

TREE PROTECTION BARRIERS - POST DEMOLITION
LOCATION OF TREE PROTECTION BARRIERS POST DEMOLITION IS TO BE ADJUSTED AS REQUIRED TO ACCOMMODATE FUTURE LAYOUT

## LANDSCAPE PLAN - PLANTING PLAN



LANDSCAPE PLAN - PLANT SCHEDULE + NOTES

PROPOSED PLANT SCHEDULE				
TAG	QUANTITY	COMMON NAME	BOTANICAL NAME	NOTES
PALMS				
CN	27	MALAYSIAN COCONUT PALM	Cocos nucifera	Specimen, relocated existing palms as needed
TREES				
CS	6	SILK FLOSS TREE	Ceiba speciosa	Specimen, uniform canopy
PL	3	FRANGIPANI	Plumeria rubra	Specimen, blossom white in color
FD	5	JAPANESE FERN TREE	Fellicium decipiens	Specimen
SHRUBS				
MF	75	SIMPSON STOPPER	Myrcianthes fragrans	
CG	5	AUTOGRAPH TREE	Clusia gutifera	clipped to hedge form, see note on plans
PX	72	PHILODENDRON	Philodendron 'Xanadu'	
IV	74	DWARF YAUPON HOLLY	Ilex vomitoria 'Schellings dwarf'	
GRASSES AND ORNAMENTALS				
AD	570sf	FOXTAIL FERN	Asparagus densiflorus 'Myersii'	-
HL	566sf	SPIDER LILY	Hymenocallis littoralis	blossom white in color
GROUND COVER				
TJ	351sf	CONFEDERATE JASMINE	Trachelospermum jasminoides	
TURF				
PS	23,922sf	SEASHORE PALSPALUM	Palspalum 'Sea dwarf'	solid sod

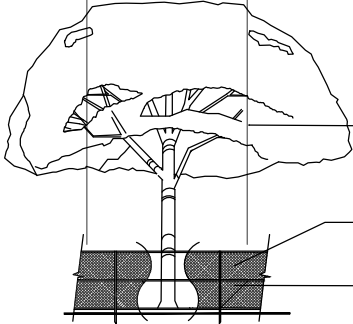
NOTE: REFER TO CONCEPTUAL PLANTING PLAN FOR RELOCATED TREE AND PALM LOCATIONS

LANDSCAPE LEGEND MIAMI-DADE COUNTY LANDSCAPE ORDINANCE CHAPTER 18-A (RESIDENTIAL VERSION)  <u>TREES</u> 3 TREES REQUIRED PER LOT/3 TREES PROVIDED MEETING MINIMUM REQUIREMENTS (7 EXISTING LIVE OAK TREE + 1 EXISTING FICUS TREE )  <u>NATIVE TREES</u> 30% OF REQUIRED TREES OR .30X3=.9 NATIVE TREES REQUIRED/8 NATIVE TREES PROVIDED (7 NATIVE LIVE OAKS + NATIVE FICUS TREE PROVIDED)  <u>SHRUBS</u> 10 SHRUBS REQUIRED FOR EACH REQUIRED TREE OR 10X(3)=30 REQUIRED SHRUBS/75 SHRUBS PROVIDED  <u>NATIVE SHRUBS</u> 30T5 OF TOTAL SHRUBS REQUIRED MUST BE NATIVE OR .30X30=90 NATIVE SHRUBS PROVIDED (75 NATIVE SIMPSON STOPPER SHRUBS PROVIDED)  <u>LAWN AREA</u> 50% MAXIMUM OF LANDSCAPE AREA: NEW LAWN AREAS ARE LESS THAN 50% OF LANDSCAPE AREA  <u>IRRIGATION SYSTEM</u> 100% COVERAGE PROVIDED PURSUANT TO MIAMI DADE CODE
----------------------------------------------------------------------------------------------------------------------------------------------------------------------------------------------------------------------------------------------------------------------------------------------------------------------------------------------------------------------------------------------------------------------------------------------------------------------------------------------------------------------------------------------------------------------------------------------------------------------------------------------------------------------------------------------------------------------------------------------------------------------------------------------------------------------------------------------------------------------------------------------------------

LANDSCAPE PLAN NOTES
1. ALL LANDSCAPE AREAS TO BE 100% COVERED BY A FULLY AUTOMATIC IRRIGATION SYSTEM WITH RAIN SENSOR. BEFORE INSTALLATION THE CONTRACTOR IS TO PROVIDE SHOP DRAWINGS OF THE OF THE IRRIGATION SYSTEM TO THE LANDSCAPE ARCHITECT AND OWNER FOR REVIEW AND APPROVAL. THE IRRIGATION PLAN AS PROVIDED IN THESE DRAWINGS IS SCHEMATIC IN NATURE AND SHALL BE ADJUSTED BASED ON 'AS BUILT' FIELD CONDITIONS.
2. THE LANDSCAPE DRAWINGS ARE TO BE UTILIZED FOR LANDSCAPE CONCEPT AND IRRIGATION PURPOSES ONLY. ALL SITE IMPROVEMENTS INCLUDING GRADING AND DRAINAGE TO BE BY OTHERS. REFER TO ARCHITECTURE AND ENGINEERING PLANS FOR ALL ADDITIONAL INFORMATION.
3. ALL TREE LOCATIONS, PALM LOCATIONS, AND PLANTING BED LINES ARE TO BE APPROVED BY THE LANDSCAPE ARCHITECT PRIOR TO INSTALLATION. THE LANDSCAPE CONTRACTOR SHALL SCHEDULE AN ON SITE MEETING WITH THE OWNER AND LANDSCAPE ARCHITECT PRIOR TO BEGINNING ANY WORK.

TREE PROTECTION FENCES SHALL BE CONSTRUCTED PRIOR TO ANY CONSTRUCTION ACTIVITY INCLUDING GRUBBING FOR ALL TREES / PALMS THAT ARE 'TO REMAIN, BE PROTECTED, or BE RELOCATED'

NO ACTIVITY OR DISTURBANCE SHOULD OCCUR WITHIN THE FENCED AREAS, INCLUDING VEHICLE USE, STORAGE OF MATERIALS, DUMPING OF LIQUIDS OR MATERIALS, GRADE CHANGES, GRUBBING, AND MECHANICAL TRENCHING FOR IRRIGATION, ELECTRICAL, LIGHTING, ETC.



FENCE SHALL EXTEND A MINIMUM OF 8" BEYOND TRUNK FOR EVERY 1" OF DBH AS PER C.M.B. GUIDELINES.

TREE + PALM PROTECTION BARRIERS TO EXTEND BEYOND THE 'DRIPLINE' or TO THE 'CRITICAL ROOT ZONE AREA' OF ALL TREES / PALMS TO BE PROTECTED. EXTEND WHERE NECESSARY TO PROTECT TREE CANOPY ROOTS.

IN-GROUND METAL POLES AT 8' SPACING.

MINIMUM 4' HEIGHT PREMANUFACTURED CONTINUOUS CHAIN LINK FENCE BARRIER

**PROTECTION DETAIL NOTE**  
CONTRACTOR TO INSTALL 'TREE + PROTECTION FENCE BARRIERS' AROUND ALL EXISTING TREES OR PALMS AT THE START OF THE PROJECT. BARRIERS TO REMAIN IN PLACE THROUGHOUT THE DURATION OF THE PROJECT AND SHOULD NOT BE REMOVED OR DROPPED FOR ANY REASON WITHOUT AUTHORIZATION FROM THE CITY OF MIAMI BEACH URBAN FORESTER + PLANNING + ZONING DEPARTMENT

**C.M.B. - CHAINLINK FENCE PROTEC. DETAIL**

N.T.S.

WORK TO BE SUPERVISED BY AN ISA CERTIFIED ARBORIST OR BIOLOGIST OR A COMPANY WITH A CERTIFIED ISA ARBORIST ON STAFF.

ROOT PRUNING MUST BE DONE A MINIMUM OF 8 WEEKS PRIOR TO TRANSPLANTING.

WATERING MUST PROVIDE SUFFICIENT WATER TO MAINTAIN A MOIST CONDITION IN THE ROOTS. ONCE A WEEK OR MORE ACCORDING TO CONDITIONS.

TAKE EXTRA CARE NOT TO DAMAGE THE TRUNK OR BRANCHES.

TRENCH TO BE LIGHTLY FILLED WITH FIBROUS MATERIAL SUCH AS LEAVES OR WOOD SHAVINGS. TRENCH SHALL USE SHARP INSTRUMENTS OR MACHINERY. RIPPING OR TEARING OF THE ROOTS IS STRICLY PROHIBITED.

ALL TORN ROOTS MUST BE TRIMMED TO SOLID WOOD WITH CLEAN, SHARP INSTRUMENTS

DEPTH TO BE 18" MIN. TO 36" -VARIES WITH SIZE OF TREE

**C.M.B. ROOT PRUNING DETAIL**

N.T.S.



LANDSCAPE PLAN - LANDSCAPE DETAILS + NOTES

LANDSCAPE NOTES

1. ALL PLANT MATERIAL SHALL BE FLORIDA GRADE NO. 1 OR BETTER.

2. CONTRACTOR SHALL BECOME FAMILIAR WITH THE LOCATION OF, AVOID, AND PROTECT ALL UTILITY LINES, BURIED CABLES, AND OTHER UTILITIES.

3. TREE, PALM, ACCENT AND BED LINES ARE TO BE LOCATED IN THE FIELD AND APPROVED BY THE LANDSCAPE ARCHITECT PRIOR TO INSTALLATION.

ANY CHANGES TO R.O.W. (RIGHT OF WAY) MATERIAL IN REGARDS TO PLACEMENT OF SPECIES SHALL REQUIRE THE APPROVAL AND CONSULTATION OF THE CITY URBAN FORESTER AND OR CITY STAFF.

4. ALL PLANTING SOIL SHALL BE 50:50 TOPSOIL:SAND MIX, FREE OF CLAY, STONES, ROCKS, OR OTHER FOREIGN MATTER. THIS SPECIFICATION INCLUDES ALL BACKFILL FOR BERMS AND OTHER LANDSCAPE AREAS.

CARE SHALL BE TAKEN TO AVOID PLACEMENT OF CONSTRUCTION FILL, GRAVEL, AND/OR DEBRIS OVER THE ROOTBALLS OF INSTALLED OR EXISTING TREES AND/OR PALMS ON SITE.

SODDED-LAWN AREAS  
2" DEPTH PLANTING SOIL SPREAD IN PLACE- THROUGHOUT.

GROUNDCOVER PLANTING BEDS:  
6" DEPTH PLANTING SOIL SPREAD IN PLACE- THROUGHOUT.

SHRUB AND HEDGE PLANTING AREAS:  
12" DEPTH PLANTING SOIL SPREAD IN PLACE- THROUGHOUT.

TREES, PALMS, SPECIMEN PLANT MATERIAL LOCATIONS:  
REMOVE ALL LIMEROCK PRESENT TO A DEPTH OF AT LEAST 30"BEFORE PLACING NEW PLANTING SOIL. APPLY NEW CLEAN PLANTING SOIL IN PLANTING AREA AS REQUIRED

5. THE SITE CONTRACTOR SHALL BE RESPONSIBLE TO BRING ALL GRADES TO WITHIN 2" OF FINAL GRADES. THIS SHALL INCLUDE A 2" APPLICATION OF 50:50 TOPSOIL:SAND MIX FOR ALL LANDSCAPE AND AREAS TO BE SODDED.

6. THE LANDSCAPE CONTRACTOR SHALL CALCULATE AND SUBMIT AN ITEMIZED PRICE FOR THE 2" APPLICATION OF 50:50 MIX FOR ALL SOD AREAS AS A REFERENCE IN THE CASE THAT THERE WOULD BE A DISCREPANCY BETWEEN SITE AND LANDSCAPE CONTRACTORS AND NOTIFY THE SITE CONTRACTOR OR PROJECT SUPERINTENDENT AS TO THIS DISCREPANCY. IT WILL THEN BE DETERMINED WHICH PARTY WILL PROVIDE THIS 2" TOPSOIL:SAND APPLICATION AND SUBSEQUENT PAYMENT.OTHER PLANTING SOIL MIXES TO BE ADDED. I.E. FOR TREES, PALMS, SPECIMEN PLANTS, SHRUBS AND GROUNDCOVERS SHALL BE THE RESPONSIBILITY OF THE LANDSCAPE CONTRACTOR AND BE INCLUSIVE WITH THE LANDSCAPE BID.

7. ALL EXISTING TREE + PALM INFORMATION THAT HAS BEEN PROVIDED ON THIS PLAN FOLLOWS THE MIAMI DADE COUNTY E.R.M. TREE PERMITTING GUIDELINES. ANY TREES OR PALMS CONSIDERED INVASIVE OR THAT FALLS UNDER THE TREE PERMIT EXEMPTION / PROHIBITED SPECIES LIST 24-94 (4) MAY NOT BE SHOWN FOR CLARITY PURPOSES. ANY DISCREPANCIES IF NOTED UPON FURTHER FIELD INSPECTION SHALL BE BROUGHT TO THE IMMEDIATE ATTENTION OF THE LANDSCAPE ARCHITECT.

8. IRRIGATION SHALL PROVIDE FOR A 100% COVERAGE WITH 50% OVERLAP MINIMUM AND BE PROVIDED BY A FULLY AUTOMATIC IRRIGATION SYSTEM W/ RAIN MOISTURE SENSOR ATTACHED TO CONTROLLER. ALL FLORIDA BUILDING CODE APPENDIX "F" IRRIGATION REQUIREMENTS SHALL BE STRICTLY ADHERED TO FOR INSTALLATION AND PREVAILING WATER MANAGEMENT DISTRICT RESTRICTIONS AND REGULATIONS SHALL BE IN COMPLIANCE FOR POST-INSTALLATION WATERING SCHEDULES.CONTRACTOR SHALL COORDINATE WITH THE IRRIGATION CONTRACTOR AND LEAVE PROVISIONS FOR ALL SLEEVING AND PIPE ROUTING. ALL UNDERGROUND UTILITIES TO BE LOCATED BY DIALING 811 AS REQUIRED BY LAW.

9. ALL PLANTING BEDS SHALL BE MULCHED TO A DEPTH OF 2" WITH A SMALL GRAY GRANITE AGGREGATE or APPROVED ORGANIC MULCH FREE FROM WEEDS AND PESTS. NO 'CYPRESS MULCH' OR 'RED DYED MULCH' TO BE ACCEPTED. KEEP MULCH 6" AWAY FROM TREE OR PALM TRUNKS AS PER INDUSTRY RECOMMENDATIONS.

10. SOD SHALL BE 'EMPIRE TURF' ZOYSIA GRASS IN ALL LAWN AREAS AS SHOWN ON THE PLANS. SOD SHALL BE STRONGLY ROOTED, FREE FROM WEED, FUNGUS, INSECTS AND DISEASE. CONTRACTOR SHALL SOD ALL AREAS AS INDICATED ON THE PLANS OR AS DIRECTED. PAYMENT SHALL BE DETERMINED BY THE TOTAL MEASURED SODDED AREAS X THE UNIT PRICE SUBMITTED AND FIELD VERIFIED. SOD SHALL CARRY A 5-MONTH WARRANTY.

11. ALL TREES, PALMS, SHRUBS AND GROUNDCOVERS, AND SOD / LAWN SHALL CARRY A ONE-YEAR WARRANTY FROM THE DATE OF FINAL ACCEPTANCE.

12. ALL TREES AND PALMS SHALL BE STAKED PER ACCEPTED STANDARDS BY THE FLORIDA NURSERYMEN & GROWERS LANDSCAPE ASSOCIATION (FNGLA) AND ANSI A-300 (PART 6)-2012 TREE, SHRUB, AND OTHER WOODY PLANT MANAGEMENT STANDARD PRACTICES (PLANTING AND TRANSPLANTING). CONTRACTOR SHALL ENSURE THAT THE PLANS, DETAILS, SPECIFICATIONS AND NOTES HAVE BEEN ADHERED TO AND THAT THE LANDSCAPE AND IRRIGATION INSTALLATION IS COMPLIANT TO ALL ITEMS AS DIRECTED ON THE PLANS PRIOR TO SCHEDULING OF THE FINAL INSPECTION.

CONTRACTOR SHALL REMOVE ALL STAKES, POLES, WELLINGTON TAPE AND OR BRACING MATERIALS FROM ALL PALMS, TREES AND SHRUBS WITHIN 1 YEAR OF INSTALLATION.

13. THE PLANT LIST IS INTENDED ONLY AS AN AID TO BIDDING. ANY DISCREPANCIES FOUND BETWEEN THE QUANTITIES ON THE PLAN AND PLANT LIST, THE QUANTITIES ON THE PLAN SHALL BE HELD VALID.

14. IF NECESSARY, CONTRACTOR SHALL PROVIDE A WATER TRUCK DURING PLANTING TO ENSURE PROPER WATERING-IN DURING INSTALLATION AND CONTRACTOR WILL BE RESPONSIBLE FOR CONTINUAL WATERING UNTIL FINAL ACCEPTANCE BY THE OWNER.

A MINIMUM OF 6 MONTHS OF SUPPLEMENTAL HAND OR AUTOMATIC IRRIGATION SYSTEM WATERING SHALL BE REQUIRED TO AID IN NEW TREE OR PALM ESTABLISHMENT.

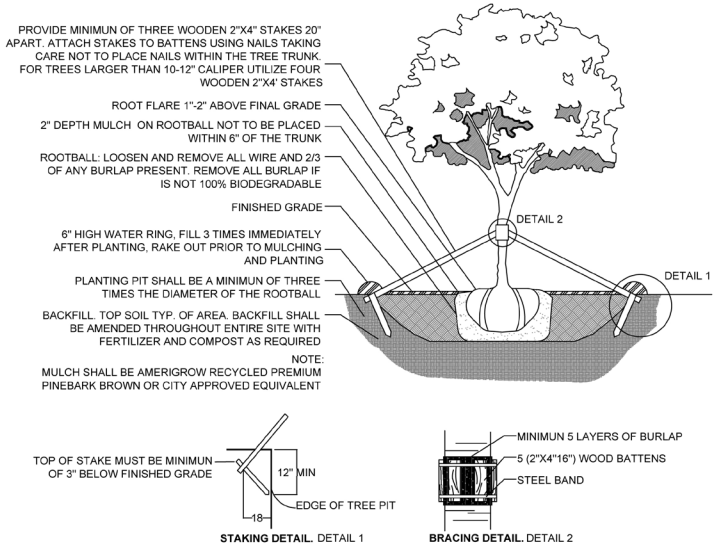
15. FERTILIZATION: ONE COMPLETE APPLICATION OF GRANULAR FERTILIZER SHALL BE APPLIED PRIOR TO FINAL ACCEPTANCE AND APPROVAL BY THE LANDSCAPE ARCHITECT. FERTILIZER SHALL BE OSMACOTE OR APPROVAL EQUAL.

16. SHOULD ANY TREES OR PALMS BE DAMAGED THEY SHALL BE EVALUATED BY THE CITY URBAN FORESTER TO DETERMINE CORRECTIVE ACTIONS THAT MAY INCLUDE REMOVAL, CORRECTIVE PRUNING AND OR REPLACEMENT. ANY CORRECTIVE ACTION REQUIRED SHALL BE PERFORMED IN ACCORDANCE WITH A MIAMI DADE COUNTY CODE, ANSI-A 300 PRUNING STANDARDS AND OR AN ISSUED ERM TREE PERMIT OR ENVIRONMENTAL PERMIT. ANY CORRECTIVE PRUNING REQUIRED SHALL BE PERFORMED BY AN ISA CERTIFIED ARBORIST OR ASCA CONSULTING ARBORIST AND THE CITY URBAN FORESTER SHALL BE CONSULTED.

17. ALL TREES + PALMS TO REMAIN OR BE RELOCATED ON SITE IN THE VICINITY OF CONSTRUCTION ACTIVITIES, SHALL BE PROTECTED THROUGH THE USE OF TREE PROTECTION BARRICADES INSTALLED AT THE TREE OR PALM DRIP LINE. A TREE PROTECTION FENCE SHALL BE CONSTRUCTED PRIOR TO ANY CONSTRUCTION ACTIVITY INCLUDING GRUBBING AND SHALL REMAIN IN PLACE UNTIL ON SITE CONSTRUCTION HAS BEEN COMPLETED.

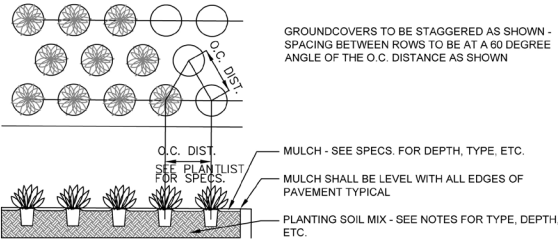
18. CITY URBAN FORESTER AND/OR PLANNING DEPARTMENT STAFF TO APPROVE R.O.W. TREES BEFORE THEY ARE PLANTED.

20. MULCH SHALL NOT BE APPLIED WITHIN 6" OF ANY TREE OR PALM TRUNK THAT IS INSTALLED OR INCORPORATED INTO THE PROJECT. FOR R.O.W. TREES + PALMS, ALL MULCH SHALL BE AMERIGROW 'PREMIUM PINEBARK BROWN' SHREDDED MULCH OR A CITY APPROVED ALTERNATIVE.



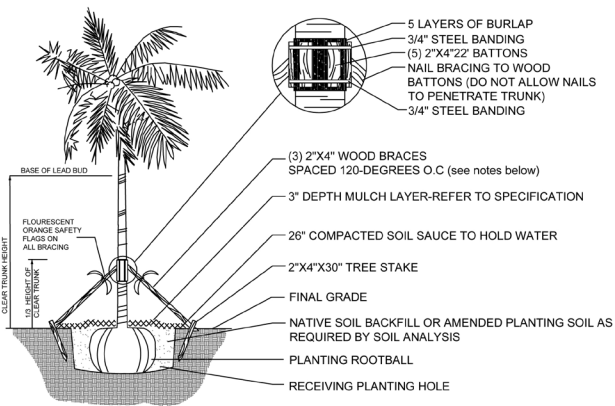
C.M.B. LARGE TREE PLANTING DETAIL

N.T.S.



GROUNDCOVER PLANTING DETAIL

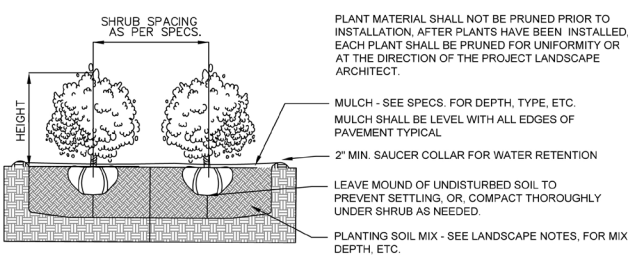
N.T.S.



- NOTES:
1. PALMS OVER 30' GW HEIGHT, USE MINIMUM (4) 4X4 BRACING AND STAKES
  2. PRIMARY STAKES SHOULD PLACED PARALLEL TO WALKWAYS WHENEVER POSSIBLE
  - 3.RECEIVING PLANTING HOLE SHALL BE APPROXIMATELY 1/3 LARGER THAN ROOTBALL
  4. BUD SHALL BE PERPENDICULAR TO THE GROUND PLANE
  5. TRUNK SHALL BE STRAIGHT AND WITHOUT CURVES
  6. NO SCARRED OR BLACKENED TRUNKS
  7. AMENDED SOIL MIX TO BE ADDED AT THE TIME OF PLANTING NEEDED, SHALL CONSIST OF A RATIO MIX OF 80% CLEAN SILICA SAND AND 20% SCREENED PULVERIZED TOPSOIL AS NEEDED

C.M.B. PALM PLANTING DETAIL

N.T.S.



SHRUB PLANTING DETAIL

N.T.S.

IRRIGATION NOTES

1. IRRIGATION CONTRACTOR SHALL PROVIDE, FURNISH, AND INSTALL A FULLY AUTOMATIC IRRIGATION SYSTEM WHICH WILL COMPLY WITH ALL LOCAL CODE, STATE CODE, & WATER MANAGEMENT DISTRICT (SWFMD) REQUIREMENTS.

2. THE IRRIGATION CONTRACTOR SHALL SCHEDULE AN ON-SITE PRE-CONSTRUCTION CONFERENCE WITH THE OWNER AND THE OWNER'S AUTHORIZED REPRESENTATIVE PRIOR TO COMMENCEMENT OF INSTALLATION OF THE IRRIGATION SYSTEM.

3. CONTRACTOR SHALL INSTALL POP-UP TYPE HEADS. SPRAY TYPE SHALL BE ROTOR, IMPACT, SPRAY, OR BUBBLER AND SHALL BE INSTALLED SO AS NOT TO CAUSE ANY OVERSPRAY ONTO ANY PAVED SURFACES, I.E. ROADS, SIDEWALKS, ETC. ALL FIXTURES SHALL BE "TORO", "RAINBIRD" OR AN APPROVED EQUAL. ALL WORK SHALL BE DONE IN A PROFESSIONAL MANNER AS PER MANUFACTURER'S SPECIFICATIONS.

4. ALL MAIN SUPPLY LINE SHALL BE PVC SCHEDULE 40 PIPE. ALL PVC FITTINGS SHALL BE SCHEDULE 40. THE MAINLINE IS SHOWN SCHEMATICALLY. LOCATE MAIN LINES IN LANDSCAPE AREAS WHERE POSSIBLE AND SLEEVE UNDER PAVEMENT WHERE NECESSARY. MAINLINES SHALL BE IN THE SAME TRENCH WITH THE LATERAL LINES WHERE POSSIBLE.

5. CONTRACTOR SHALL FAMILIARIZE HIMSELF WITH THE LOCATION OF AND AVOID & PROTECT ALL UTILITY LINES, DUCTS, BURIED CABLES AND OTHER UTILITIES IN THE AREA. CONTRACTOR WILL BE RESPONSIBLE FOR THE REPAIR, LIABILITY, AND COSTS INCURRED IN THE DAMAGE OR DESTRUCTION OF SAID UTILITIES. CALL SUNSHINE STATE ONE CALLS 811, 48 HOURS PRIOR TO COMMENCEMENT OF ANY WORK FOR PROPER UTILITY LOCATION AND CLEARANCES.

6. THE CONTRACTOR SHALL SECURE ALL WORK WITH THE PROJECT MANAGER, LANDSCAPE CONTRACTOR AND ALL OTHER CONTRACTORS TO INSURE PROPER INSTALLATION, SCHEDULING, AND PROCEDURE.

7. THE CONTRACTOR SHALL COORDINATE WITH THE PROJECT MANAGER TO PROVIDE ELECTRICAL SUPPLY TO THE CONTROLLER, PUMP, ETC. AS NEEDED.

8. THE CONTRACTOR SHALL BE RESPONSIBLE TO SECURE ALL PERMITS AS MAY BE DEEMED NECESSARY TO PERFORM THE WORK. ENTIRE SYSTEM SHALL BE INSTALLED IN COMPLIANCE WITH ALL LOCAL AND STATE CODES.

9. ALL SLEEVES UNDER PAVEMENT SHALL BE BURIED PER FLORIDA BUILDING CODE, APPENDIX "F". ALL LATERAL SLEEVES UNDER SIDEWALKS SHALL BE BURIED BELOW WALKWAYS AND SHALL BE SCHEDULE 40 PVC. ALL SLEEVING SHALL BE SCHEDULE 40 PVC PIPE AND SHALL BE 2 TIMES THE MAIN OR LATERAL PIPE SIZE.

10. THE CONTRACTOR SHALL CONNECT THE MASTER VALVE (WHEN APPLICABLE) AND ALL ELECTRIC VALVES TO THE CONTROLLER AND PROVIDE PROPER SYNCHRONIZATION.

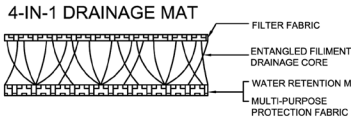
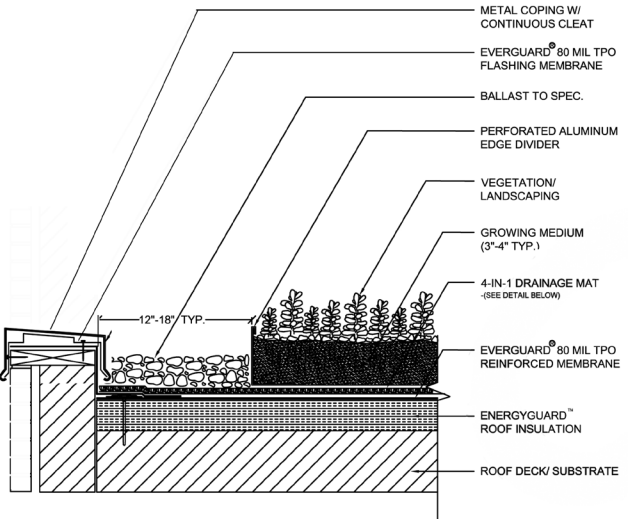
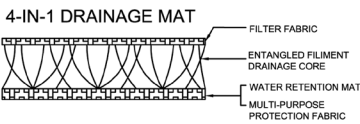
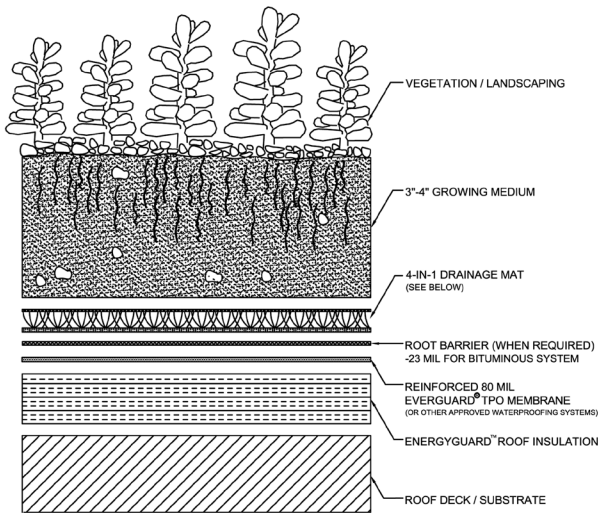
11. ALL LOW VOLTAGE ELECTRIC VALVES SHALL BE #14 DIRECT BURIAL. ALL WIRES UNDER ROADS TO BE PLACED IN A SPERARATE 1" SLEEVE. CONTRACTOR SHALL PROVIDE A MINIMUM OF TWO EXTRA WIRES FOR EMERGENCY POST INSTALLATION WIRING.

12. ALL LINE LOCATIONS ARE APPROXIMATE. THE CONTRACTOR SHALL ADJUST TRENCHING AND LOCATION OF SPRAY HEADS IN THE FIELD FOR EXISTING CONDITIONS, WALKS, UTILITIES, STRUCTURES, AND PLANTINGS TO PROVIDE AND INSURE 100% COVERAGE AND 100% OVERLAP.

13. CONTRACTOR SHALL PROVIDE A ONE-YEAR GUARANTEE ON ALL PARTS AND A 90 DAY GUARANTEE ON LABOR FROM THE DATE OF FINAL ACCEPTANCE.

14. THE IRRIGATION CONTRACTOR SHALL RECORD ALL CHANGES MADE TO THE IRRIGATION SYSTEM DURING INSTALLATION, AND PROVIDE AN AS-BUILT DRAWING TO THE OWNER'S REPRESENTATIVE UPON COMPLETION AND ACCEPTANCE OF THE WORK.

15. THE IRRIGATION CONTRACTOR SHALL INSTRUCT THE OWNER OR THE OWNER'S REPRESENTATIVE IN THE COMPLETE OPERATION AND MAINTENANCE OF THE SYSTEM. THE CONTRACTOR SHALL FURNISH TWO COPIES OF AN IRRIGATION SYSTEM MANAGEMENT MANUAL PREPARED BY THE MANUFACTURER AND THE SYSTEM INSTALLER.



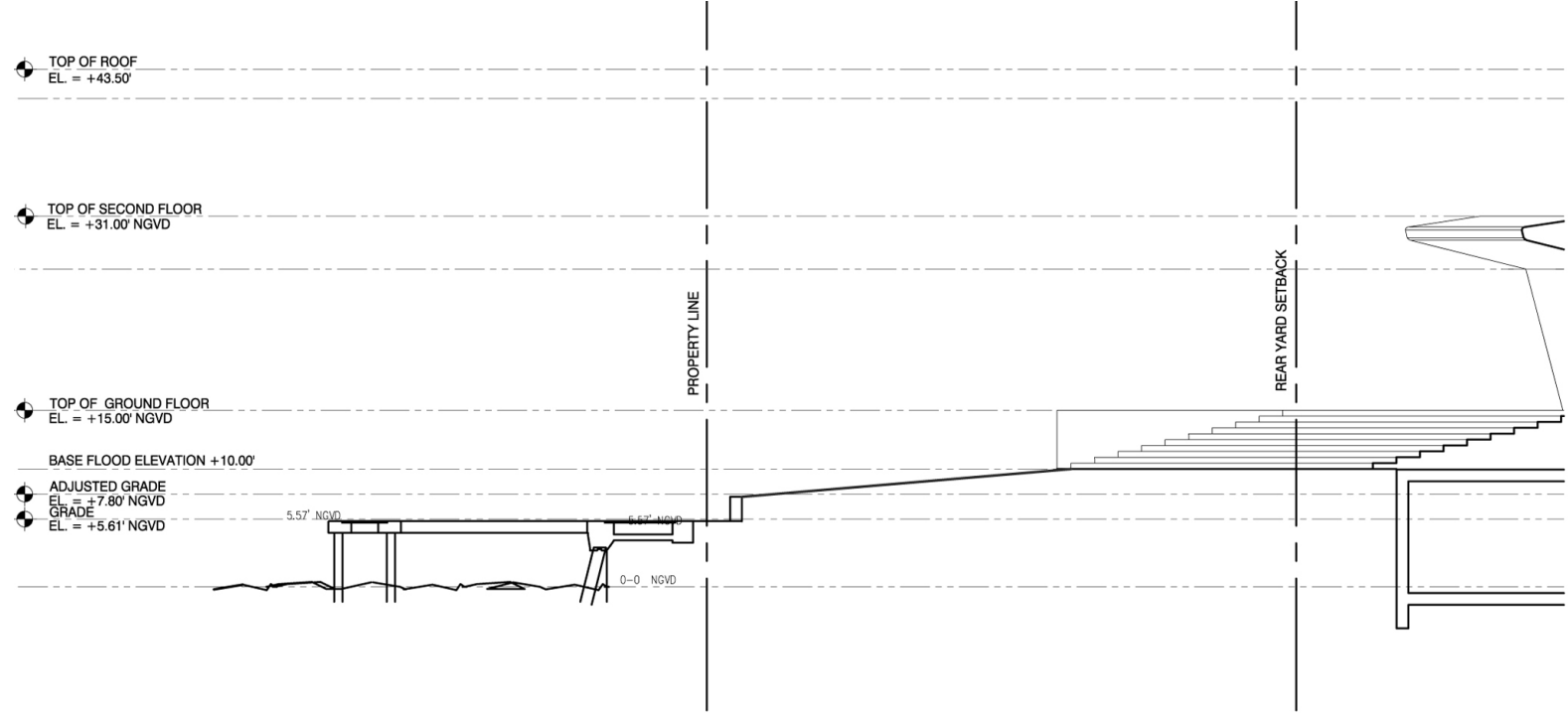


## GRADING PLAN

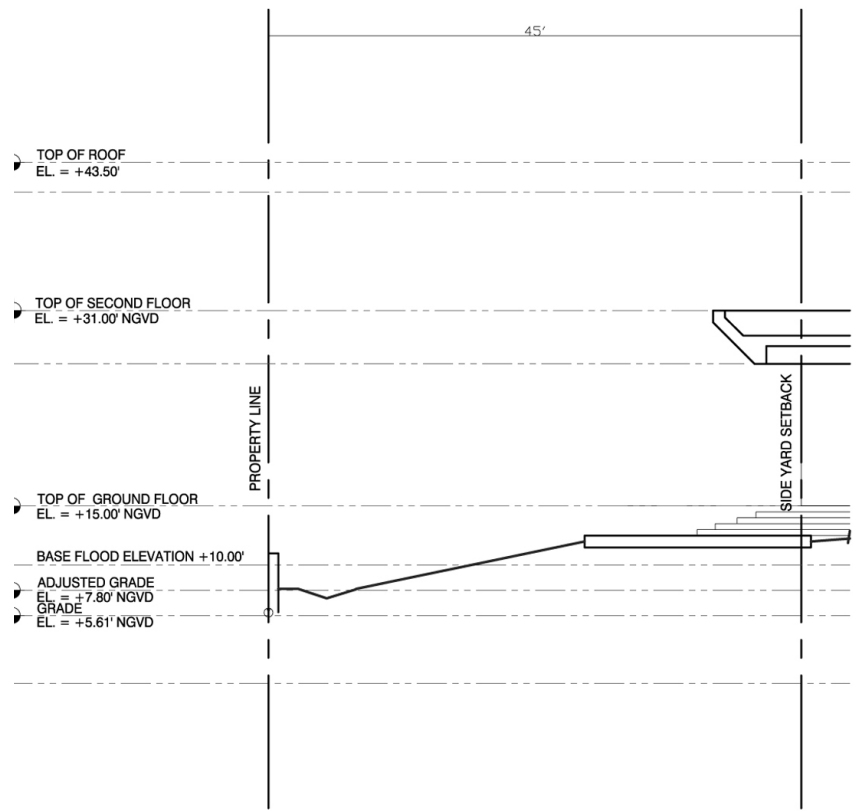




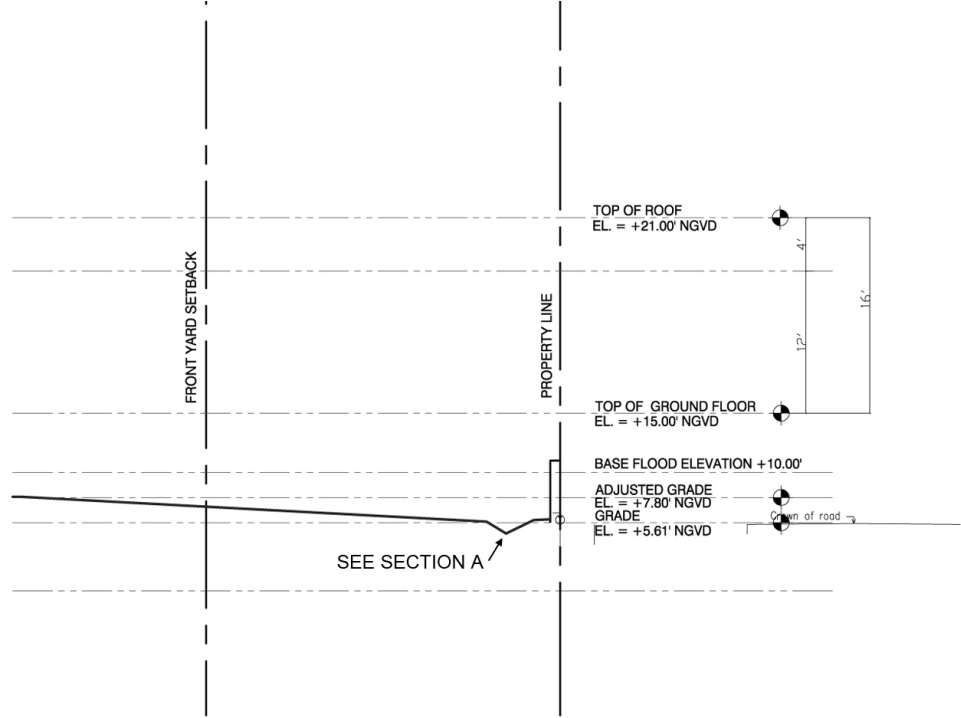
GRADING SECTIONS



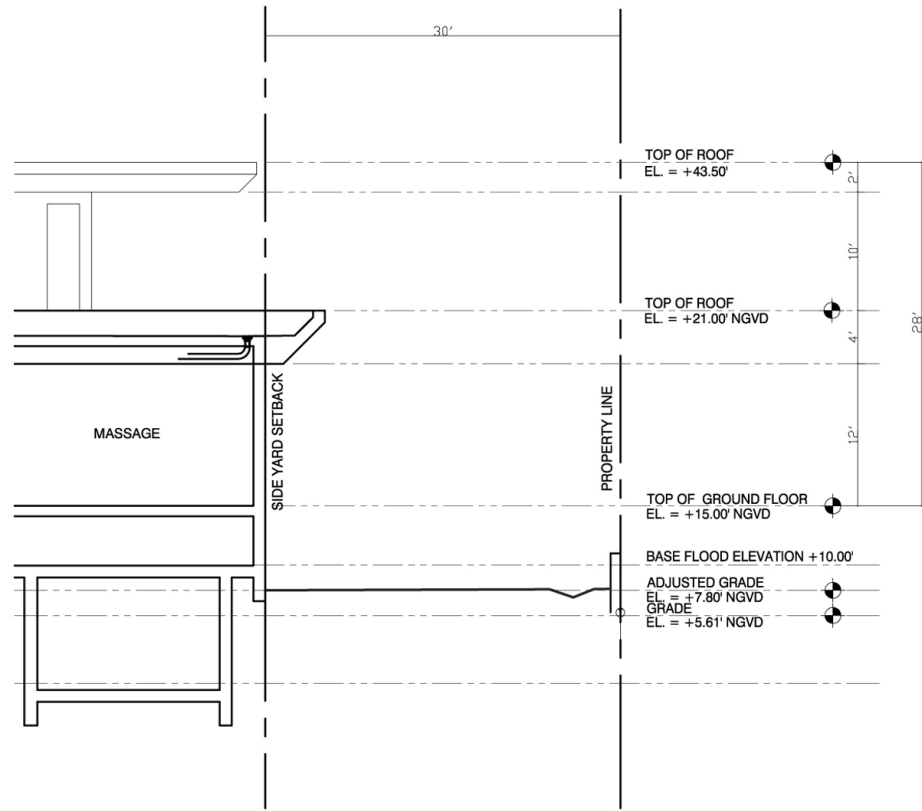
1 REAR YARD SECTION B-1



3 SIDE YARD SECTION A-1



2 FRONT YARD SECTION B-2



4 SIDE YARD SECTION A-2

# **Biscayne Environmental, Inc.**

Environmental and Land Development Consultants ♦ Mitigation Design and Contracting

May 23, 2016

Ricardo Guzman, Sr. Planner  
City of Miami Beach Planning Department  
1700 Convention Center Drive, 2<sup>nd</sup> Floor  
Miami Beach, FL 33139

RE: 11 Star island Drive, Miami Beach  
Protection of Tree No. 131 During Construction

Dear Mr. Guzman,

This is in response to the recent comments made regarding the protection of Tree No. 131 during construction of the new residential structure on the subject property. Tree No. 131 is a multi-trunked specimen banyan tree located in the center of the property near the south property line (see attached tree survey and disposition plan). It is in good condition with good branch structure, has been well maintained, and has a high canopy beginning 15' – 18' above ground.

In order to adequately protect the banyan tree during construction, a six foot tall commercial grade galvanized chain link fence with top rail and tension wire at the base of the fence will be constructed a minimum of 15' from the outer edge of the base of the tree trunk. All of the fence posts will be hand driven with an air hammer into the ground at least three feet to provide sufficient support; no concrete will be poured around the base of the posts to minimize potential impacts to the root zone under the dripline of the tree. Similar fence will be placed around all other trees that are to remain on the property using the same methodologies (see attached tree protection plan).

To minimize root zone impacts outside the chain link tree protection barrier, all piling and grade beam locations will be staked out in advance of installation to assess potential impacts. Any surface roots that are in conflict will be cut with a sharp root saw to prevent ripping, and any subsurface roots that are affected during installation will also be cut. Likewise, any canopy branches that are on the very edge of the dripline that may be in conflict with proposed construction activities will be trimmed in accordance with arborist's standards and practices to prevent any unnecessary impacts to the tree canopy.

During site work and grading, frequent inspections will be made to insure that the tree protection barriers are being adequately maintained; any necessary modifications to the fencing will be made immediately. Inspections will also be made to insure that fill material and other construction materials are not being placed under the outer dripline of the tree, and any such materials that are found beneath the dripline will be promptly and carefully removed.



I believe that the above-noted safeguards will protect the banyan tree (and the other trees that are to remain) throughout the construction process.

Please feel free to contact me with any question you may have regarding this assessment.

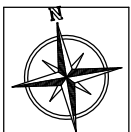
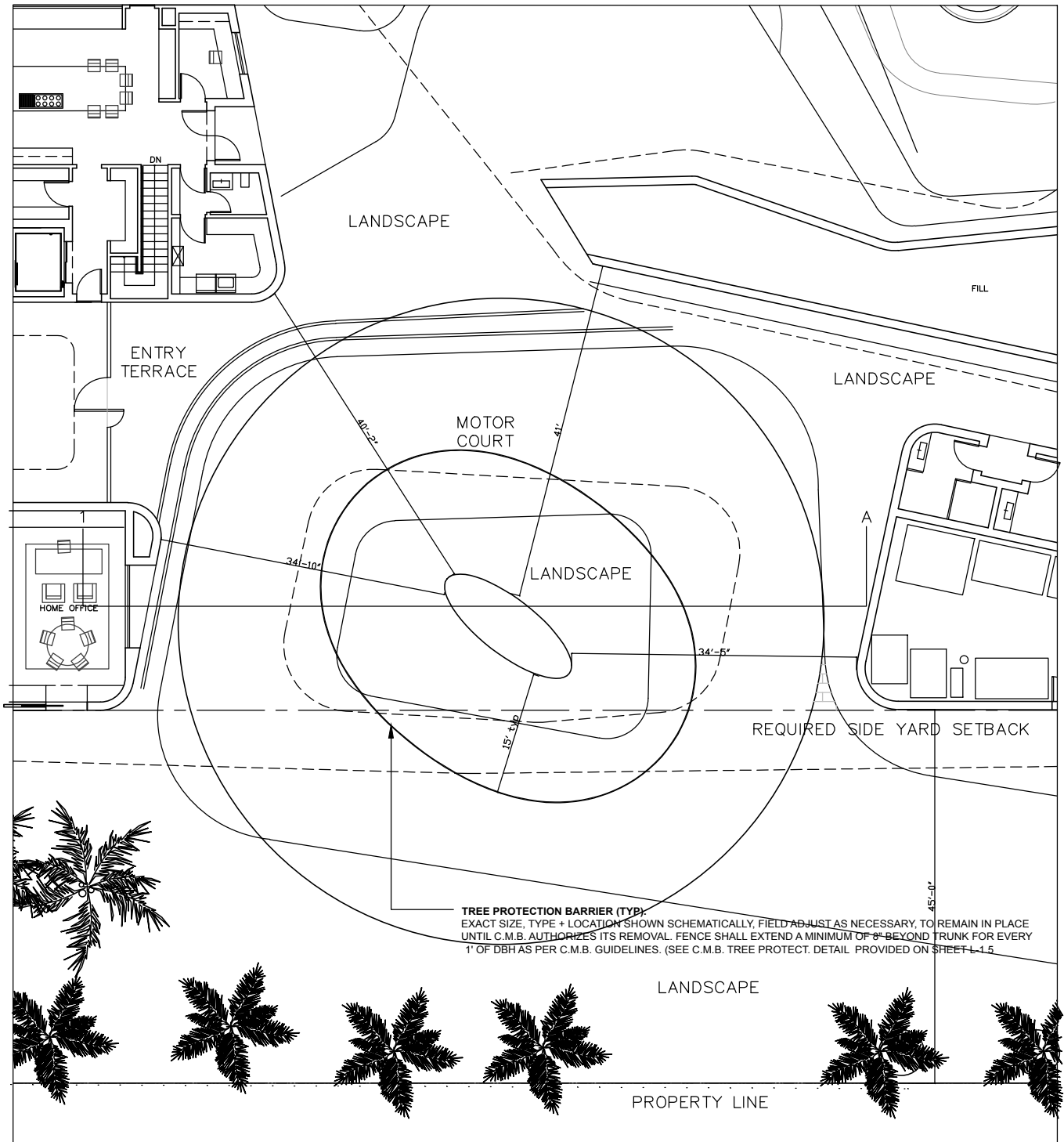
Sincerely,  
BISCAYNE ENVIRONMENTAL, INC.

A handwritten signature in black ink, appearing to read 'DEttman', is positioned above the printed name.

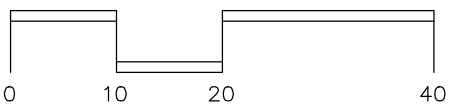
David Ettman, Sr. Biologist  
President

DE/ cs

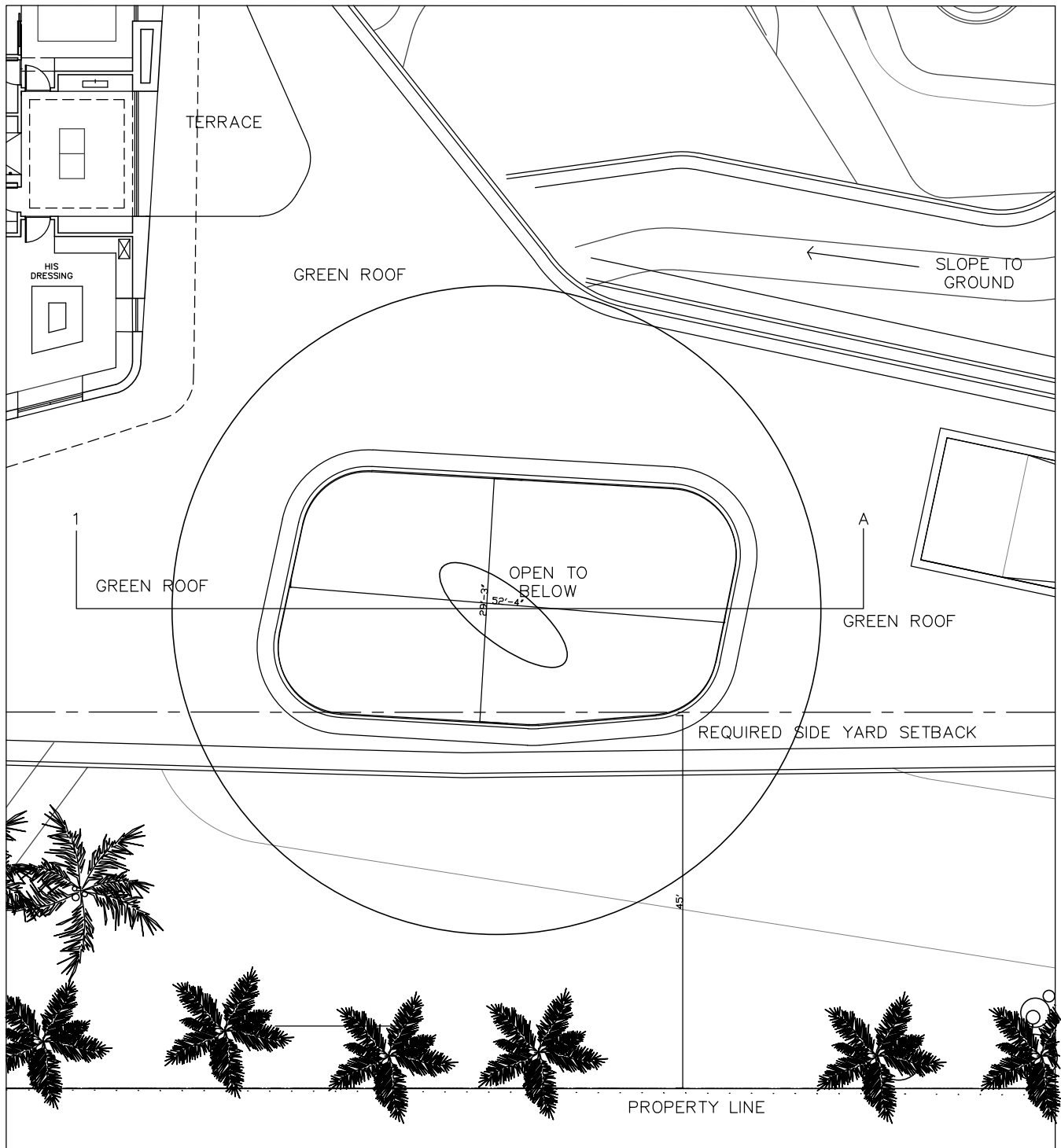
cc: Todd Glaser



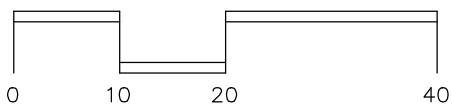
TREE PROTECTION PLAN— GROUND FLOOR

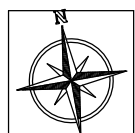
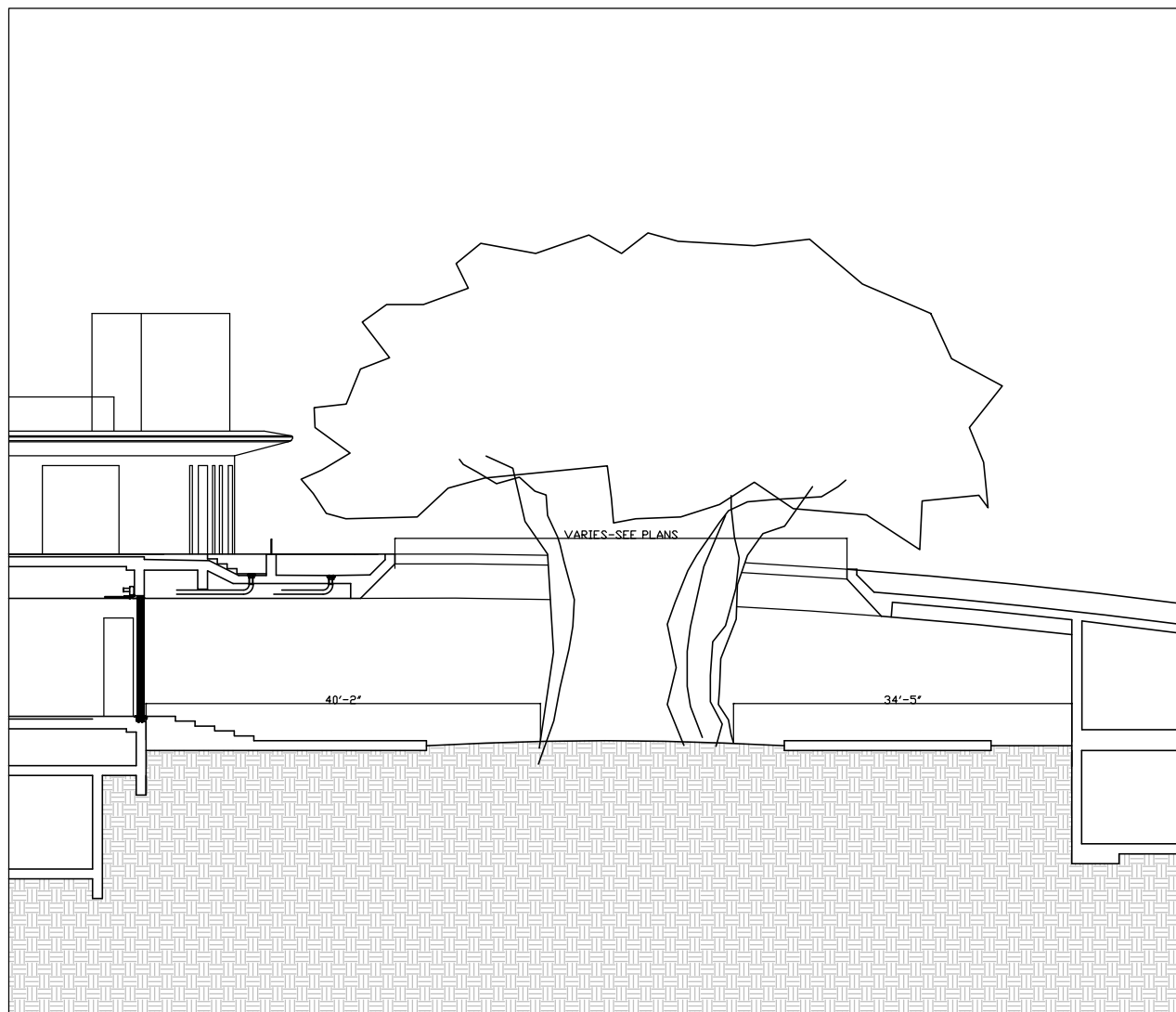






TREE PROTECTION PLAN— SECOND FLOOR





SECTION 1-A

