

SURVEY NOTE:
THIS ROW LINE SURVEY WAS COMPLETED UNDER THE DIRECT
AND RESPONSIBLE CHARGE OF PROFESSIONAL LISTED FROM
AN ACTUAL GROUND SURVEY MADE UNDER MY SUPERVISION;
THAT THE ROW DATA SHOWN WAS OBTAINED ON OCTOBER
28, 2019; AND THAT THIS MAP MEETS MINIMUM ACCURACY
STANDARDS UNLESS OTHERWISE NOTED.

A PORTION OF OCEAN BEACH ADDITION NO 3
PLAT BOOK 2, PAGE 81
LOTS 9 AND 10, BLOCK 97
MIAMI DADE COUNTY PUBLIC RECORDS

PROPOSED UTILITY POLE
LAT N025°46'32.891"
LON W080°08'20.317"
N=525,132.00'
E=939511.17'
2.8' SOUTH OF THE NORTH ROAD R/W
4.8' NORTH OF EDGE OF PAVEMENT

FACE OF BUILDING
SIDEWALK
FLOW LINE
SIGN
EDGE OF PAVEMENT
RIGHT OF WAY

EXISTING LIGHT POLE
LAT N025°46'32.873"
LON W080°08'20.303"
N=525,130.27'
E=939512.49'
4.5' SOUTH OF THE NORTH ROAD R/W
3.1' NORTH OF EDGE OF PAVEMENT

50' R/W PER CITY OF MIAMI

6TH STREET

WM
WM
POWE POLE
CONC WALK
ELEC HH
COMCAST HH
SIGN
FLOW LINE
EDGE OF PAVEMENT
RIGHT OF WAY

FACE OF BUILDING
LOT 8 BLOCK 97
MIAMI DADE COUNTY PUBLIC RECORDS

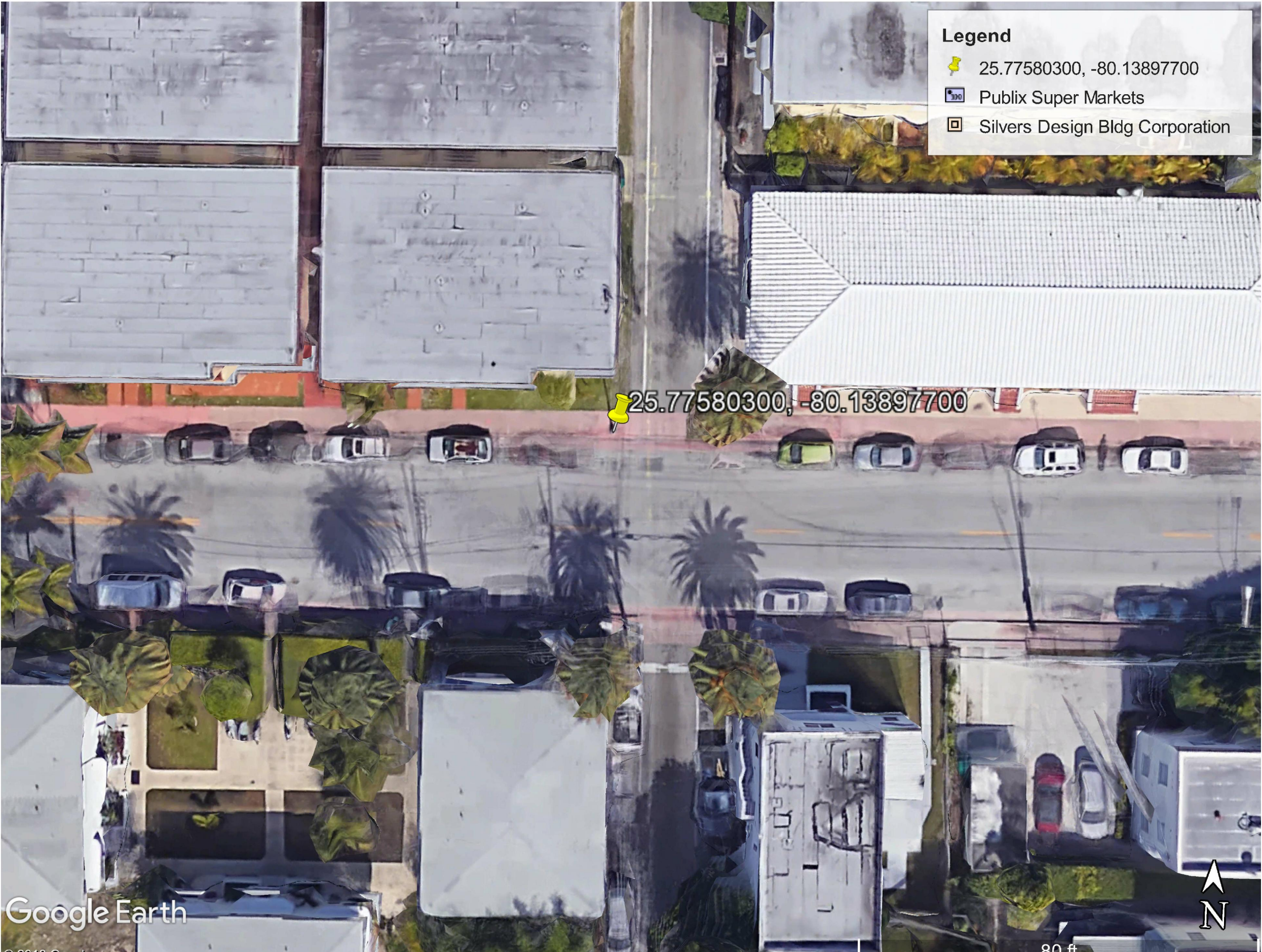
CONC WALK
POWE POLE
ELEC HH
UTILITY POLES
COMCAST HH
WM
WM
WM
CONC WALK
FLOW LINE
EDGE OF PAVEMENT
RIGHT OF WAY

FOR 24" X 36" PLOT - 1" = 20'
FOR 11" X 17" PLOT - 1" = 40'

1
SE-1

SURVEY EXHIBIT





Legend

- 25.77580300, -80.13897700
- Publix Super Markets
- Silvers Design Bldg Corporation

Google Earth

1
SE-2

SURVEY EXHIBIT
NOT TO SCALE

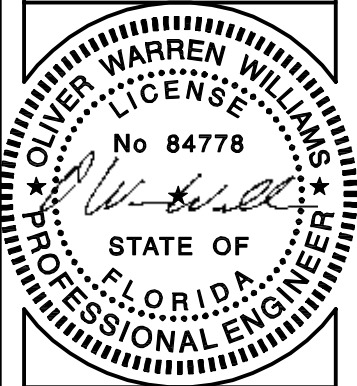


69 HONOUR CIR NW
ATLANTA, GA 30305



7508 SHADOW CREEK DR
SUMMERFIELD
NORTH CAROLINA
27358
(757) 450-2288

NO.	
1	10/30/19 SURVEY EXHIBIT
	BY: ALB CHK: OWW APP'D: OWW
2	
3	
4	
5	
6	



MI90XS331J
NEW UTILITY
POLE

1035 6TH STREET
MIAMI BEACH, FL

DRAWN BY:	RTW
CHECKED BY:	OWW
TTV DATE:	NA
COMM NO:	MINI-MACRO

SHEET TITLE:
SURVEY EXHIBIT

SHEET NUMBER:
SE-2