

Crescent Heights

709 Alton Road Miami Beach,
Florida, 33139

619

MILLER LEGG
5747 N Andrews Way
Ft. Lauderdale, FL 33309
1954, 436, 7000
1954, 436, 8854

LEADSCAPE

SAVINO MILLER DESIGN STUDIO
12345 NE 8th Avenue Suite A
North Miami, FL 33161
1 305.895.0082
1 305.895.9083

STRUCTURE

DDA ENGINEERS, P.A.
4930 SW 74th Street
Miami, FL 33155
1 305.666.0711
1 305.666.5259

MEFTF

BR+A
2600 Douglas Road, Suite 301
Coral Gables, FL 33134
1 305.529.1515
1 305.529.1113

DESMAN ASSOCIATES
110 E. Broward Boulevard, Suite 1710
Fort Lauderdale, FL 33301
1954.315.3924
1954.315.3891

PERMIT
SET

Revisions

Calculation Summary								
Label	CalcType	Units	Meter Type	Avg	Max	Min	Avg/Min	Max/Min
Garage 3rd_Floor	Illuminance	Fc	Horizontal	2.76	7.5	1.5	1.84	5.00
Lobby 301_Floor	Illuminance	Fc	Normal	26.82	43.6	9.6	2.79	4.54
Offices 304_Floor	Illuminance	Fc	Normal	5.15	12.4	1.0	5.15	12.40
Spill at Setback	Illuminance	Fc	Horizontal	0.03	0.1	0.0	N.A.	N.A.
Spill on Alley	Illuminance	Fc	Horizontal	0.03	0.1	0.0	N.A.	N.A.
Spill on Residential Line	Illuminance	Fc	Horizontal	0.00	0.0	0.0	N.A.	N.A.
Ramp Area	Illuminance	Fc		3.57	6.2	1.4	2.55	4.43

11	CITY OF MIAMI BEACH PERMIT COMMENTS	08/26/2016
NO	ISSUE	DATE

Sheet Information

Date	Issued: September 4, 2014
Job Number	810408.000
Drawn	JV
Checked	CEJ
Approved	Approved

LEVEL 3 NORMAL
PHOTOMETRIC
PLAN

Sheet
E-703A

PERMIT
SET

Revisions

11	CITY OF MIAMI BEACH	09/28/20
7	PERMIT COMMENTS	09/14/20
7	VE CHANGES	09/14/20
NO	ISSUE	DATE

Sheet Information

Date	Issued: September 4, 2014
Job Number	810469.000
Drawn	JV
Checked	CEJ
Approved	Approved

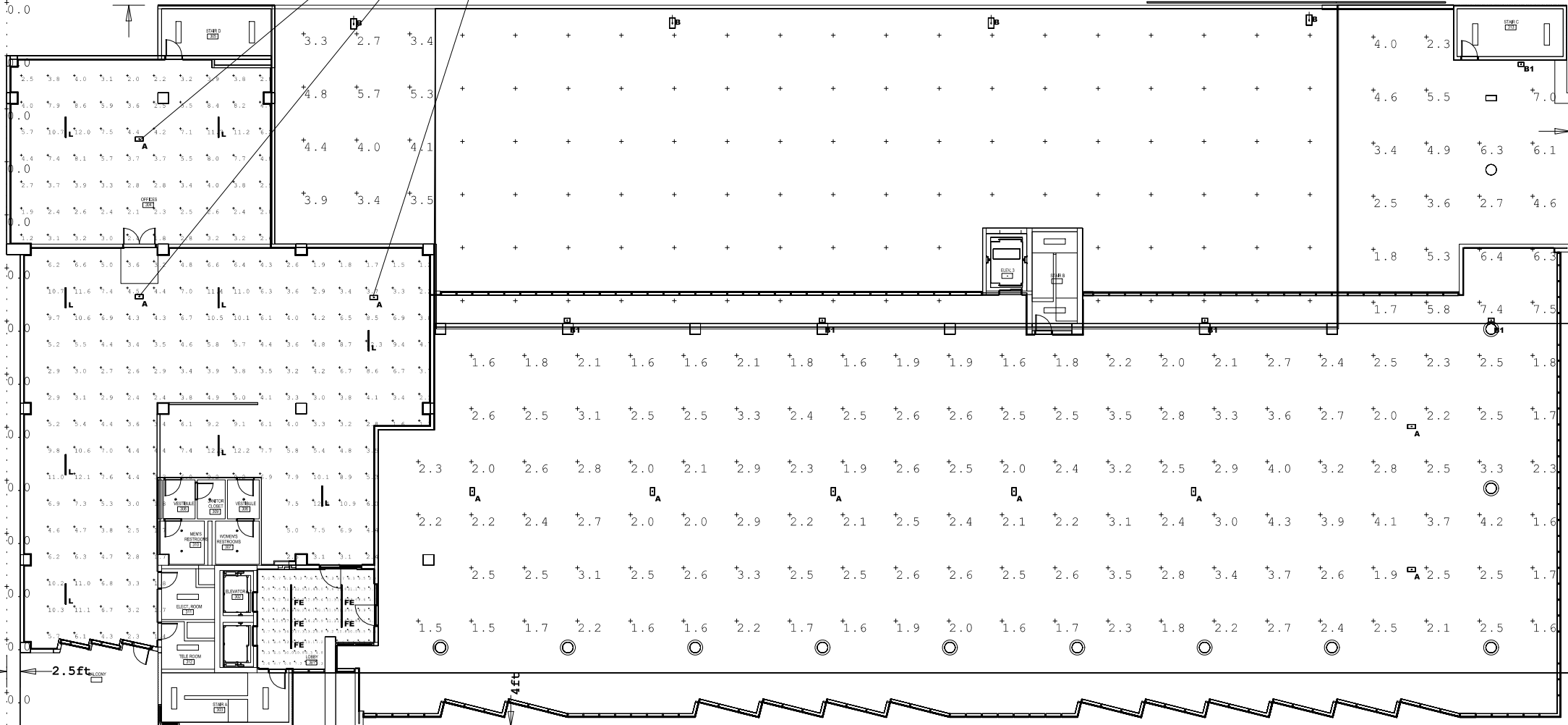
LEVEL 3
EMERGENCY
PHOTOMETRIC
PLAN

Sheet

E-703B

Copyright © 2013 Perkins+Will

LOCATED ON 2ND FLOOR



Luminaire Schedule

Symbol	Qty	Label	Arrangement	[MANUFAC]	Description	Lum. Lumens	LLF	Lum. Watts
	10	A	SINGLE	Lithonia Lighting	DSXPG LED 20C 1000 40K T5R MVOLT (EM CIRCUIT)	6049	0.860	74
	4	B	SINGLE	U.S. ARCHITECTURAL LIGHTING	RZR-M-PLD-IV-FT-48LED-700mA-NW-HS (EM CIRCUIT)	7842	0.860	105
	5	B1	SINGLE	U.S. ARCHITECTURAL LIGHTING	RZR-WM2-PLD-IV-FT-40LED-700mA-NW-HS (EM CIRCUIT)	6535	0.860	86.7
	5	FE	SINGLE	FOCAL POINT LIGHTING - CHICAGO, IL	FSM2L FL 250LF 35K 1C UNV LD1 XFF WH X' (EM CIRCUIT)	981	0.860	16
	9	L	SINGLE	Lithonia Lighting	Z 2 28T5 MVOLT GEB10PS WGZ46	4780	0.855	67

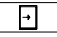

Calculation Summary

Label	CalcType	Units	Meter Type	Avg	Max	Min	Avg/Min	Max/Min
Garage 3rd_Floor	Illuminance	Fc	Horizontal	2.76	7.5	1.5	1.84	5.00
Lobby 301_Floor	Illuminance	Fc	Normal	9.18	18.6	2.5	3.67	7.44
Offices 304_Floor	Illuminance	Fc	Normal	5.16	12.4	1.1	4.69	11.27
Spill at Setback	Illuminance	Fc	Horizontal	0.03	0.1	0.0	N.A.	N.A.
Spill on Alley	Illuminance	Fc	Horizontal	0.03	0.1	0.0	N.A.	N.A.
Spill on Residential Line	Illuminance	Fc	Horizontal	0.00	0.0	0.0	N.A.	N.A.
Ramp Area	Illuminance	Fc		3.58	6.2	1.6	2.56	4.43

PERMIT
SET

Revisions

Luminaire Schedule

Symbol	Qty	Label	Arrangement	[MANUFAC]	Description	Lum. Lumens	LLF	Lum. Watts
	2	J1	SINGLE	Lithonia Lighting	DSXW1 LED 20C 1000 40X TFTM MVOLT ELCW	5886	0.860	75
	27	L	SINGLE	Lithonia Lighting	Z 2 2875 MVOLT GEB10PS WG246	4780	0.855	67

Calculation Summary

Label	CalcType	Units	Meter Type	Avg	Max	Min	Avg/Min	Max/Min
Generator Area	Illuminance	Fc	Horizontal	3.79	7.5	1.2	3.16	6.25
Medical Offices 401_Floor	Illuminance	Fc	Normal	5.01	12.5	1.4	3.58	8.93

LPD Area Summary

Label	Area	Total Watts	LPD
Medical Offices 401_LPD	21722	1809	0.083

11	CITY OF MIAMI BEACH PERMIT COMMENTS	08/26/2020 16
7	VE CHANGES	08/14/2021 15
5	DERM COMMENTS	07/08/21 15
NO	ISSUE	DATE
Sheet Information		
Date	Issued: September 4, 2014	
Job Number	810469.000	
Drawn	JW	
Checked	CEJ	
Approved	Approver	

LEVEL 4
PHOTOMETRIC
PLAN

Sheet

E-704

Crescent Heights

709 Alton Road Miami Beach,
Florida, 33139

MILLER LEGG
6747 N Andrews Way
Ft. Lauderdale, FL 33309
1 954.436.7000
1 954.436.8054

LANDSCAPE
SAVINO MILLER DESIGN STUDIO
12345 NE 6th Avenue Suite A
North Miami, FL 33151
1 305.895.9082
1 305.895.9083

DDA ENGINEERS, P.A.
4930 SW 74th Street
Miami, FL 33155

2500 Douglas Road, Suite 301
Coral Gables, FL 33134
1 305.529.1515
1 305.529.1113

DESMAN ASSOCIATES
110 E. Broward Boulevard, Suite 1710
Fort Lauderdale, FL 33301
1954.315.9324
1954.315.9899

**PERMIT
SET**

Revisions

7	VE CHANGES	08/14/15
NO	ISSUE	DATE

Sheet Information

Date	09/02/14
Job Number	810408,000
Drawn	Author
Checked	Checker
Approved	Approver

Title
LEVEL 5
PHOTOMETRIC
PLAN

Sheet
E-705

Copyright © 2013 Perkins+Will

2 LEVEL 5 PHOTOMETRIC PLAN Final
1:1

PERMIT
SET

Revisions

Luminaire Schedule							
Symbol	Qty	Label	Arrangement	[MANUFAC]	Description	Lum. Lumens	LLF Lum. Watts
	19	K	SINGLE	BEGA-US	2005P	528	0.860 27
	3	C	SINGLE	Gotham Architectural Lighting	EVO SQ 35_14 4AR LD 120	1391	0.860 26.3
	4	CE	SINGLE	Gotham Architectural Lighting	EVO SQ 35_14 4AR LD 277 (EM CIRCUIT)	1391	0.860 26.3

Calculation Summary									
Label	CalcType	Units	Meter Type	Avg	Max	Min	Avg/Min	Max/Min	
Elevator Vestibule 501_Floor	Illuminance	Fc	Normal	15.07	19.6	9.2	1.64	2.13	
Landscape Path	Illuminance	Fc	Horizontal	1.27	5.5	0.2	6.35	27.50	

LPD Area Summary			
Label	Area	Total Watts	LPD
Elevator Vestibule 501_LPD	234.57	184.1	0.785

11	CITY OF MIAMI BEACH	09/26/20
7	PERMIT COMMENTS	09/14/20
7	VE CHANGES	15
NO	ISSUE	DATE
Sheet Information		
Date	Issued: September 4, 2014	
Job Number	810409.000	
Drawn	JW	
Checked	CEJ	
Approved	Approver	

LEVEL 5 NORMAL
PHOTOMETRIC
PLAN

PERMIT
SET

Revisions

Luminaire Schedule							
Symbol	Qty	Label	Arrangement	[MANUFAC]	Description	Lum. Lumens	LLF Lum. Watts
	19	K	SINGLE	BEGA-US	2005P	528	0.860 27
+	4	CE	SINGLE	Gotham Architectural Lighting	EVO SQ 35_14 4AR LD 277 (EM CIRCUIT)	1391	0.860 26.3

Calculation Summary									
Label	CalcType	Units	Meter Type	Avg	Max	Min	Avg/Min	Max/Min	
Elevator Vestibule 501_Floor	Illuminance	Fc	Normal	8.31	10.7	4.0	2.08	2.68	
Landscape Path	Illuminance	Fc	Horizontal	1.25	5.4	0.2	6.25	27.00	

LPD Area Summary			
Label	Area	Total Watts	LPD
Elevator Vestibule 501_LPD	234.57	105.2	0.448

11	CITY OF MIAMI BEACH	09/26/2016
NO	PERMIT COMMENTS	16
	ISSUE	DATE
Sheet Information		
Date	Issued: September 4, 2014	
Job Number	810469.000	
Drawn	JW	
Checked	CEJ	
Approved	Approved	

LEVEL 5
EMERGENCY
PHOTOMETRIC
PLAN



Luminaire Schedule									
Symbol	Qty	Label	Accessment	[MATRXC]	Description	No. Lamps	Lumens/Lamp	LTR	lum. Watts
	10	N	SINGLE	WALL	RETLA=48-W-120-CIP-2-54-RK=1-W	2	5000		0.965 124

Calculation Summary						
Label	Units	Avg	Max	Min	Avg/Min	Max/Min
Stratos A	illumiance	23.86	53.0	11.5	2.07	4.61
Stratos B	illumiance	20.03	31.7	12.1	1.66	2.62
Stratos D	illumiance	19.66	31.8	11.9	1.64	2.67

*** STAIRS B, C, D ARE TYPICAL ***



11	CITY OF MIAMI BEACH	NO
16	PERMIT COMMENTS	ISSUE
DATE	DATE	

Revisions

PERMIT SET

MILLER LEAG
5717 N. Andrews Way
10444 NW 20th
Miami, FL 33192
(305) 431-0604

SAVANO MILLER DESIGN STUDIO
12345 NE Avenue 55
Miami Beach, FL 33137
1 305 355-8882
1 305 355-0053

DOA ENGINEERS, P.A.
4000 SW 7th Street
Miami, FL 33135
1 305 666-7711
1 305 666-5299

DESIGN ASSOCIATES
117 E. Broward Blvd., Suite 707
Fort Lauderdale, FL 33301
(904) 575-1000

DESIGN CONSULTANTS
2000 Broward Blvd., Suite 207
Fort Lauderdale, FL 33304
(904) 575-1112

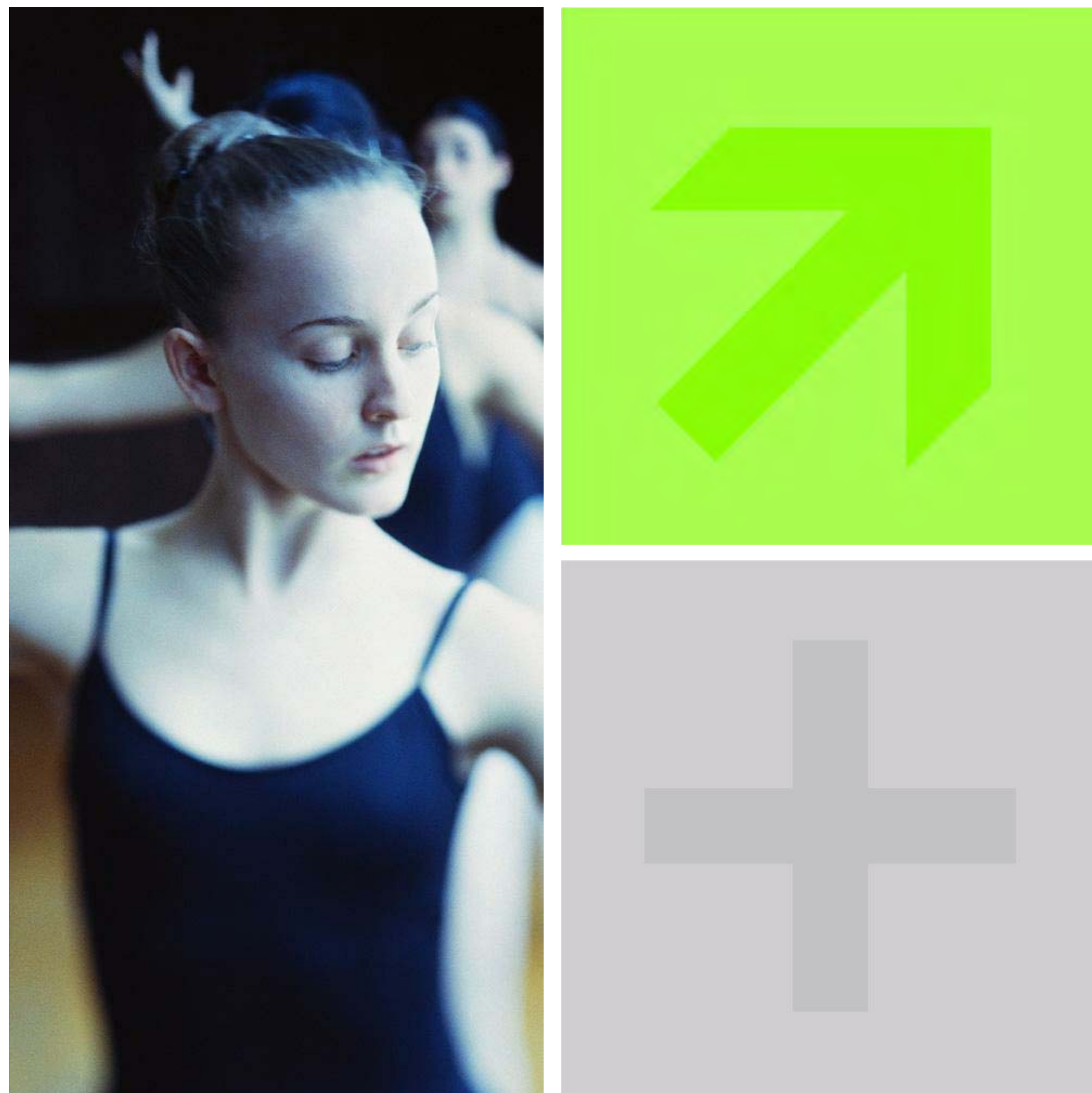
PERKINS + WILM
800 Douglas Ave.
Suite 300
Coral Gables, FL 33134
1-505-368-1333
www.perkinswil.com
709 Alton Road
Crescent Heights
709 Alton Road Miami Beach,
Florida, 33131



709 Alton Road
Crescent Heights
709 Alton Road Miami Beach, Florida, 33139

PERMIT SET

Issued: September 4, 2014
Revised: March 03, 2017



c:\temp\709_ALTON_CENTRAL_vila10c.net

--	--	--	--	--	--

R
IN

Revisions

18	PERMIT COMMENTS & FIELD COORDINATION	7/12/17
15	MTCI COMMENTS & T.I. SHEETS	3/3/17
NO	ISSUE	DATE

Sheet Information

Date	9/1/2016
Job Number	810409.000
Drawn	JD
Checked	KS
Approved	KS


ARCHITECTURAL ABBREVIATIONS, SYMBOLS & NOTES

Sheet
 TI-A00-01

Copyright © 2013 Perkins+Will

[illegible]

9. EGRESS REQUIREMENTS - TRAVEL DISTANCE / COMMON PATH / DEAD-END

	TRAVEL DISTANCE			COMMON PATH			DEAD-END		
	FBC 1014	NFPA 101	MAX. PROVIDED	FBC 1014	NFPA 101	MAX. PROVIDED	FBC 1014	NFPA 101	MAX. PROVIDED
OCCUPANCY	table 1016.2	38.2.6.3		TABLE 1014.3	38.2.5.3.1		TABLE 1018.4 EXCEPTION 2	38.2.5.2.1	
BUSINESS OCCUPANCY	300 FT. SPR.	300 FT. SPR.	150FT.	100FT.	100FT.	83FT.	50FT.	50FT.	18FT.
MERCANTILE OCCUPANCY	250 FT. SPR.	250 FT. SPR.	45FT.	75FT.	75FT.	45FT.	50FT.	50FT.	N/A
	table 1016.2	38.2.6.3							
PARKING GARAGE-S2 LOW HAZARD STORAGE	400 FT. SPR.	400 FT. SPR.	95FT.			SEE PLANS.			N/A SEE PLANS

Total Business Occ Occupant Load	Male Occupants	Female Occupants	Water Closets				Lavatories				Drinking Fountains		Service Sink		Showers	
			Male Required	Male Provided	Female Required	Female Provided	Male Required	Male Provided	Female Required	Female Provided	Required	Provided	Required	Provided	Required	Provided
538	269	269	7	19	7	21	5	17	5	18	6	7	1	4	None	3

GENERAL NOTE:
1. As per FBC Section 1204.1 Equipment and Spaces, the interior spaces intended for human occupancy shall be provided with active or passive space-heating systems capable of maintaining an indoor temperature of not less than 68 degrees Fahrenheit at a point 3 feet above the floor on a design heating day.

BUILDING OCCUPANT LOAD BY LEVEL

BUILDING OCCUPANT LOAD BY SMOKE COMPARTMENT PER FLOOR							
COMPARTMENT	OCCUPANCY TYPE	LEVEL	AREA	OCC. LOAD FACTOR	OCCUPANT LOAD	EXT. WIDTH OCC.	REQUIRED EXT. WIDTH
COMPARTMENT A	AMBULATORY SURGICAL/BUSINESS	LEVEL 01	11,516 SF	100	115 PERSONS	0.2'	22' 68"
COMPARTMENT B	BUSINESS- MEDICAL OFFICE/RANGING	LEVEL 01	8,325 SF	100	83 PERSONS	0.2'	11' 46"
COMPARTMENT C	MERCANTILE - CAFE AND RETAIL AREA	LEVEL 01	8,134 SF	60	79 PERSONS	0.2'	15' 46"

Code Reference	Florida Building Code
Section Reference(s)	Table 601, Table 602, Section 708 (Shafts), Section 1022.1 (Stairs), Table 1018.1 (Corridors)

THE STRUCTURAL FRAME SHALL BE CONSIDERED TO BE THE COLUMNS AND THE GIRDERS, BEAM TRUSSES AND SPANDRELS HAVING DIRECT CONNECTION TO THE COLUMNS AND BRACING MEMBERS DESIGNED TO RESIST THE LOADS. THE SUPPLEMENTAL BRACING MEMBERS ARE NOT REQUIRED TO BE CONNECTED TO THE COLUMNS SHALL BE CONSIDERED SECONDARY MEMBERS AND NOT A PART OF THE STRUCTURAL FRAME. FIRE-RESISTANCE RATINGS OF STRUCTURAL FRAME AND BEARING WALLS ARE PERMITTED TO BE REDUCED TO 1 HOUR, PROVIDED THAT THE FOLLOWING REQUIREMENTS ARE MET:

- a. FIRE PROTECTION OF STRUCTURAL MEMBERS SHALL NOT BE REQUIRED, INCLUDING PROTECTION OF ROOF FRAMING AND DECKING WHERE EVERY PART OF THE ROOF CONSTRUCTION IS 2 FEET OR MORE ABOVE FINISHED FLOOR LEVEL. THERE SHALL BE NO REQUIREMENT FOR PROTECTING THE STRUCTURAL MEMBERS OF THE ROOF FOR SUCH UNPROTECTED MEMBERS.
- b. MEMBERS, SUCH AS HEAVY TRIMMER, SHALL BE ALLOWED WHERE A HOUR OR LESS FIRE-RESISTANCE RATING IS REQUIRED.
- c. NOT LESS THAN THE FIRE-RESISTANCE RATING REQUIRED BY OTHER SECTIONS OF THIS CODE SHALL BE REQUIRED FOR THE FOLLOWING:
 - (1) 10 FEET OR MORE 2×6 OR 2×8 HOUR OPENING PARALLEL TO THE TRIMMER.
 - (2) SECTION 404B NOT BE REQUIRED TO HAVE A FIRE RESISTANCE RATING AND 2×4 OR 30×30 HOUR

ALTON ROAD TOTAL OCCUPANT LOAD BY LEVEL			(FBC 2010 Table 1021.1) Minimum Number of...	
Level	Occupant Load	Number of Exits Provided	Occupant Load	Minimum Number of Exits
LEVEL 01-OFFICE	240	10		
02-OFFICE	61	3	1-500	2
03-OFFICE / PARKING			501-1,000	3
LEVEL 04 OFFICE	56	2	More than 1,000	4
LEVEL 05 -ROOF DECK	21	2		

Level	Area By Occupancy Type	Occ. Load	Level Components		Stairway		Provides
			(2) Per Occ. + Req. Width (inches)	Provided Width (inches)	(3) Per Occ. + Req. Width (inches)		
LEVEL 01-OFFICE	24,011 SF	240	48	72	72		96"
LEVEL 03-OFFICE/ PARKING	6,055 SF	61	12	48	18		96"
LEVEL 04-OFFICE	5,631 SF	56	11	60	17		96"
LEVEL 05- ROOF DECK	2,146 SF	21	4	72"	6		96"

Note: As per Sec. 130-33.7.C.
 *Vehicular parking shall be reduced by one space for every 10 short term bicycle parking spaces
 12 short term bicycle parking spaces = 1 vehicular parking spaces reduced
 Note: As per Sec. * 130-32 (5)
 "The minimum parking requirements for office uses may be reduced by up to 20 percent in cases where the developer voluntarily proffers a restrictive covenant running with the land, form approved by the City Attorney, ensuring that the required office parking spaces shall be shared by all users in the building and shall not be reserved for individual persons or tenants."

Note: As per Sec. 130-33.7.C.
 *Vehicular parking shall be reduced by one space for every 10 short term bicycle parking spaces
 12 short term bicycle parking spaces = 1 vehicular parking spaces reduced
 Note: As per Sec. * 130-32 (5)
 "The minimum parking requirements for office uses may be reduced by up to 20 percent in cases where the developer voluntarily proffers a restrictive covenant running with the land, form approved by the City Attorney, ensuring that the required office parking spaces shall be shared by all users in the building and shall not be reserved for individual persons or tenants."

*The minimum parking requirements for office uses may be reduced by up to 20 percent in cases where the developer voluntarily proffers a restrictive covenant running with the land, form approved by the City Attorney, ensuring that the required office parking spaces shall be shared by all users in the building and shall not be reserved for individual persons or tenants.

ACOUSTICAL CONSULTANTS
EDWARD DUGGER + ASSOCIATES
1239 SE Indian Street, Suite 103
Sarasota, FL 34997
1772.286.8351

ISSUED FOR
PERMIT AND
CONSTRUCTION

9/1/2016



Revisions

18	PERMIT COMMENTS & FIELD COORDINATION	7/12
15	MTCI COMMENTS & T.I. SHEETS	3/3
3	MTCI COMMENTS	1/13
1	AHCA COMMENTS	7/25
NO	ISSUE	DATE

Sheet Information

Date	9/1/2
Job Number	810409
Drawn	
Checked	
Approved	

CODE
COMPLIANCE
DATA

Sheet
 **TI-A00-10**

Copyright © 2013 Perkins+Will



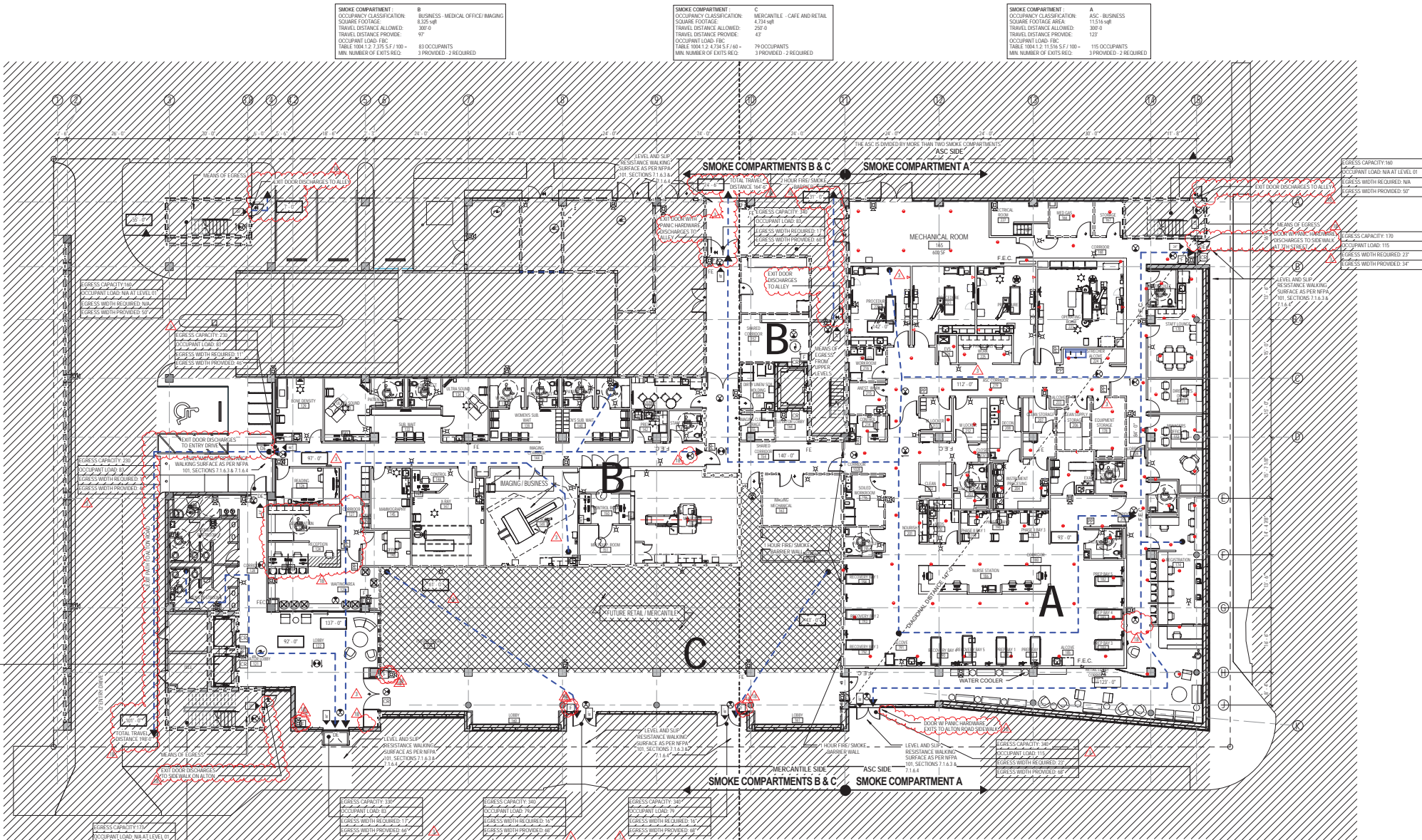
18	PERMIT COMMENTS & FIELD COORDINATION	7/12/17
15	MEETINGS & T. SHEETS	3/30/17
3	MEETINGS	1/13/17
1	MEETINGS	7/29/16
NO	DATE	

Sheet Information

Date	9/1/2016
Job Number	810409.000
Drawn	JD
Checked	KIS
Approved	KIS

Title

LEVEL 01 LIFE
SAFETY PLAN

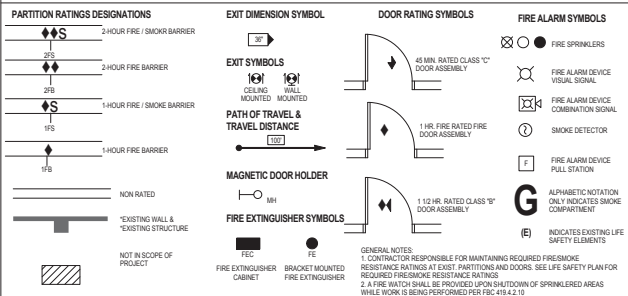


1 LEVEL 01- LIFE SAFETY PLAN
3/32" = 1'-0"

LIFE SAFETY NOTES:

1. THE ASC IS SEPARATED FROM OTHER TENANTS AND OCCUPANCIES WITH IN THE MULTIPLE-USE BUILDING BY A 1-HOUR FIRE/SMOKE BARRIER, AS PER NFPA 101 SECTION 20.3.7.1.
2. THE ASC IS DESIGNED IN ACCORDANCE WITH NFPA 101 SECTION 20.3.7.2 (3), MEETING THE EXCEPTIONS AS FOLLOWS:
(a) THERE IS A SEPARATION WALL BETWEEN SMOKE COMPARTMENT A AND ADJOINING SMOKE COMPARTMENTS B AND C; THIS REQUIREMENT MEETS 20.3.7.
(b) THE AREA IS UNDER 22,500 SQ.FT. (FOR REFERENCE, THE AREA IS 11,516 SQ.FT.)
(c) THE ACCESS FROM THE ASC IS UNRESTRICTED.
3. TWO OF THE THREE MEANS OF EGRESS PROVIDED EXIT DIRECTLY TO THE EXTERIOR. (NOTE THAT ONLY TWO ARE REQUIRED; HOWEVER THREE ARE PROVIDED).
4. THE ASC IS ADJOINING THE IMAGING/BUSINESS OCCUPANCY AND IS ADJOINING THE CAFE/MERCANTILE OCCUPANCY WHICH SERVE AS SMOKE COMPARTMENTS FOR THE 1ST FLOOR AND THE ASC, AS PER NFPA 101 SECTION 20.3.7.2. THE ASC IS 11,516 AND THEREFORE IS LESS THAN 22,500 SQ.FT. AS PER NFPA 101 SECTION 20.3.7.2 (3) (B).
5. THE SMOKE COMPARTMENTS DO NOT EXCEED AN AREA OF 22,500 SQ. FT. AND THE TRAVEL DISTANCE FROM ANY POINT TO REACH A DOOR IN A SMOKE BARRIER DOES NOT EXCEED 200 FT AS PER NFPA 101 20.3.7.3.
6. THE BUILDING IS PROTECTED THROUGHOUT BY AN APPROVED, SUPERVISED AUTOMATIC SPRINKLER SYSTEM.
7. THRESHOLDS, IF PROVIDED AT DOORWAYS, SHALL BE 1/2 INCH (13 MM) HIGH MAXIMUM. RAISED THRESHOLDS AND CHANGES IN LEVEL AT DOORWAYS SHALL COMPLY WITH CHAPTER 302 AND 303, AS PER FLORIDA BUILDING CODE ACCESSIBILITY 2014 SECTION 404.2.5. ALSO REFER TO SECTION 1008.1.17 OF THE FLORIDA BUILDING CODE BUILDING.
8. FIRE EXTINGUISHERS WILL BE 2A 10BC AND WILL NOT BE INSTALLED MORE THAN 75 FEET OF TRAVEL DISTANCE FOR AN OCCUPANT.
9. PANIC HARDWARE WILL BE PROVIDED ON DOORS FOR ALL AREAS WITH AN OCCUPANT LOAD OVER 99 OCCUPANTS.

LIFE SAFETY LEGEND



STATE OF FLORIDA
MARK LOUIS LUTZ
— ★ —
ARS1993
REGISTERED ARCHITECT

Revisions

OCEANIA BAPTIST HEALTH OCCUPANT LOAD BY LEVEL					
LEVEL	NAME	AREA BY OCCUPANCY TYPE	OCCUPANCY TYPE	OCCUPANCY LOAD FACTOR	OCCUPANT LOAD
LEVEL 03	BUSINESS	3,748 SF	BUSINESS	100	4 PERSONS
LEVEL 03	LOBBY	773 SF	BUSINESS	100	8 PERSONS
LEVEL 03	THERAPY / GYM	3,748 SF	EXERCISE	50	75 PERSONS
LEVEL 03	STORAGE	273 SF	STORAGE	300	1 PERSON

GENERAL NOTE:
1. ALL THE FLOORING IN THE GYM WILL BE SLIP RESISTANT AND LEVEL AS PER FPMC 101 5TH EDITION CHAPTER 7.

PARTITION RATINGS DESIGNATIONS		EXIT DIMENSIONS
	2-HOUR FIRE / SMOKE BARRIER	
	2-HOUR FIRE BARRIER	
	1-HOUR FIRE / SMOKE BARRIER	
	1-HOUR FIRE BARRIER	
	NON RATED	
	*EXISTING WALL & *EXISTING STRUCTURE	
	NOT IN SCOPE OF PROJECT	

DOOR RATING SYMBOLS

4 MIN. RATED CLASS "1" DOOR ASSEMBLY

1 HR. FIRE RATED FIRE DOOR ASSEMBLY

1 1/2 HR. RATED CLASS "1" DOOR ASSEMBLY

FIRE ALARM SYMBOLS

☒ ● FIRE SPRINKLERS

⌂ FIRE ALARM PANEL
VISUAL SIGNAL

⌂ FIRE ALARM PANEL
COMBINATION UNIT

⌂ SMOKE DETECTOR

⌂ FIRE ALARM PANEL
PULL STATION

G ALPHABETIC NOTATION
ONLY INDICATES
COMPATIBILITY

I INDICATES
STRENGTH ELEMENT

GENERAL NOTES

- 1 CONTRACTOR RESPONSIBLE FOR MAINTAINING REQUIRED FIRE-RESISTANCE RATED AT ENTRY PARTITIONS AND SHOWERS. SEE FIRE ALARM PLAN FOR REQUIRED FIRE-RESISTANCE RESISTANCE RATINGS.
- 2 FIRE WATCH SHALL BE PROVIDED UPON DISCOVERY OF SPRINKLED AREA'S WHILE WORK IS BEING PERFORMED PER THE 2015 IFB 414.2.1.

18	PERMIT COMMENTS & FIELD COORDINATION	7/12/17
15	MTCH COMMENTS & T.I. SHEETS	3/3/17
3	MTCH COMMENTS	1/13/17
NO	ISSUE	DATE

Sheet Information

Date	9/1/2016
Job Number	810409.000
Drawn	JD
Checked	KS
Approved	KS

**LEVEL 02/LEVEL 03
LIFE SAFETY
PLANS**

Sheet
 TI-A-013

Copyright © 2013 Wolters Kluwer

OCEANIA BAPTIST HEALTH OCCUPANCY LOAD BY LEVEL						
LEVEL	NAME	AREA BY OCCUPANCY TYPE	OCCUPANCY TYPE	OCCUPANCY LOAD FACTOR	OCCUPANT COUNT	OCCUPANT TYPE
LEVEL 04	LOBBY / CORRIDOR	3,195 SF	BUSINESS	100	32 PERSON	
LEVEL 04	AMBULATORY HEALTHCARE	8,790 SF	AMBULATORY HEALTHCARE	100	88 PERSON	
LEVEL 04	MULTIPROPOSE CLASSROOM	943 SF	EDUCATIONAL	20	48 PERSON	
LEVEL 04	RECEPTION AREA (SOUTH)	2,584 SF	BUSINESS	100	26 PERSON	
LEVEL 04	MEDICAL OFFICE (NORTH)	2,745 SF	BUSINESS	100	28 PERSON	
LEVEL 04	STORAGE	1,902 SF	STORAGE	300	7 PERSON	

PARTITION RATINGS DESIGNATIONS

2-HOUR FIRE / SMOKE BARRIER
2-HOUR FIRE BARRIER
1-HOUR FIRE / SMOKE BARRIER
1-HOUR FIRE BARRIER

EXIT DIMENSION SYMBOL

EXIT SYMBOLS

CEILING MOUNTED
WALL MOUNTED

PATH OF TRAVEL & TRAVEL DISTANCE

100'

MAGNETIC DOOR HOLDER

MH

FIRE EXTINGUISHER SYMBOLS

FEC
FE

DOOR RATING SYMBOLS

45 MIN. RATED CLASS "C" DOOR ASSEMBLY
1 HR. FIRE RATED FIRE DOOR ASSEMBLY

FIRE ALARM SYMBOLS

FIRE ALARM PULL STATION
FIRE ALARM SIGNAL
FIRE ALARM DEVICE
SMOKE DETECTOR
FIRE ALARM CONTROL PANEL

ALPHABETIC NOTATION INDICATES COMPARTMENT

INDICATES SAFETY ELEMENT

GENERAL NOTES

- CONTRACTOR RESPONSIBLE FOR MAINTAINING REQUIRED FIRE/SMOKE RESISTANCE RATINGS AT EXIT PARTITIONS AND DOORS. SEE LIFE SAFETY PLAN FOR REQUIRED FIRE/SMOKE RESISTANCE RATINGS.
- FIRE WATCH SHALL BE PROVIDED UPON SHUTDOWN OF SPRINKLERED AREA.

NOT IN SCOPE OF PROJECT

2 LEVEL 04 - LIFE SAFETY PLAN
3/32" = 1'-0"

1 LEVEL 05 LIFE SAFETY PLAN (FOR REFERENCE ONLY)
3/32" = 1'-0"

ALTON ROAD BUILDING OCCUPANT LOAD LEVEL 05					
Level	Name	Area By Occupancy Type	Occupancy Type	Occupant Load Factor	Occupant Load
LEVEL 05 - ROOF DECK	MEDICAL OFFICES	2,146 SF	Business Areas	100	21
LEVEL 05 - ROOF DECK: 1		2,146 SF			21
		2,146 SF			21

ISSUED FOR
PERMIT AND
CONSTRUCTION



Revisions

18	PERMIT COMMENTS & FIELD COORDINATION	7/12
15	MTCI COMMENTS & T.I. SHEETS	3/3
3	MTCI COMMENTS	1/13
NO	ISSUE	DATE

ISSUE	DATE
Sheet Information	

Date	9/1/2016
Job Number	810409.000
Drawn	JD
Checked	KS
Approved	KS

Title

**LEVEL 04/LEVEL 05
LIFE SAFETY
PLANS**

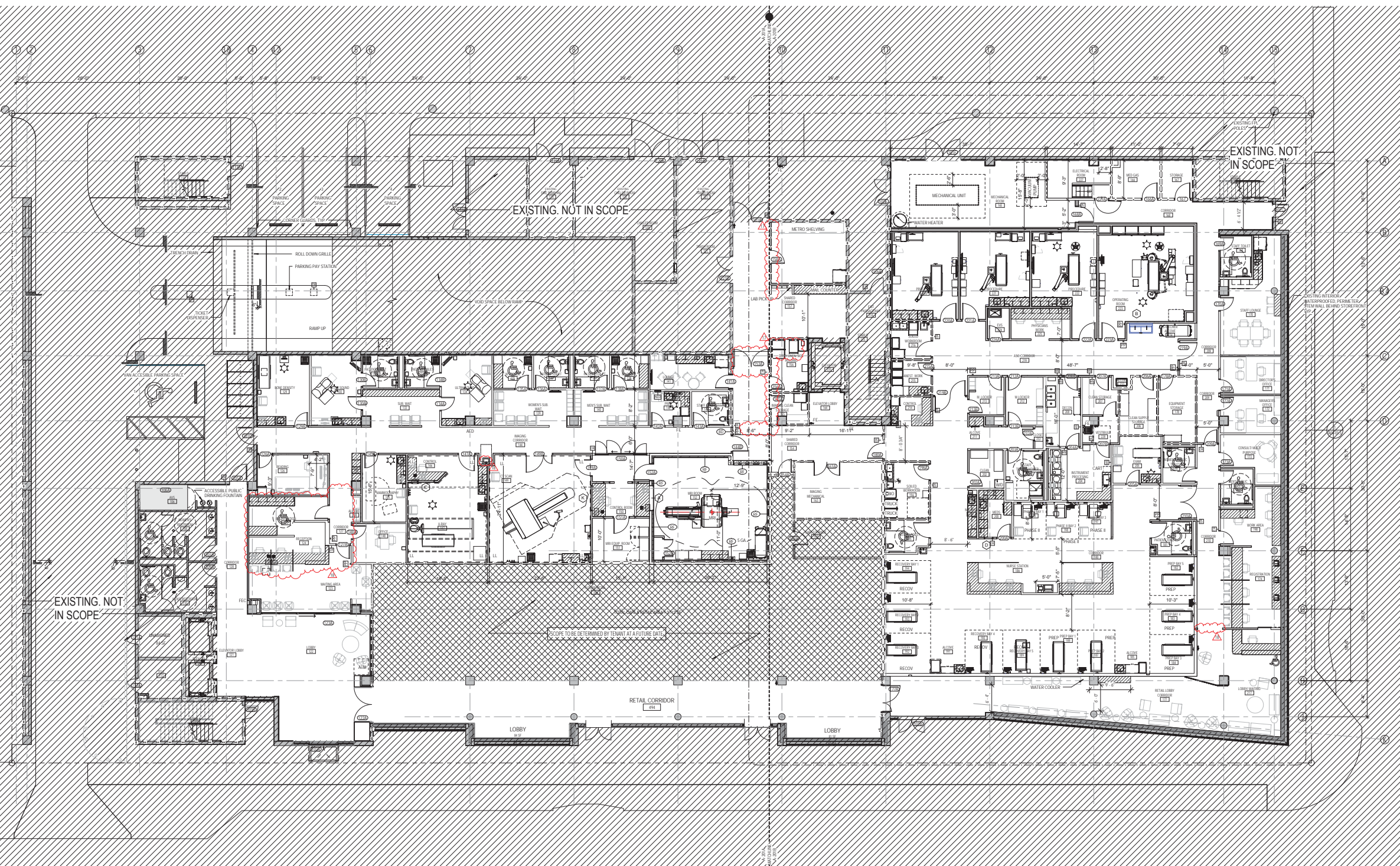
Sheet

 **TI-A-014**

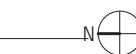


18	PERMIT COMMENTS & FIELD COORDINATION	7/12/17
17	PERMIT COMMENTS & FIELD COORDINATION	4/10/17
16	NOTES COMMENTS & T.I.	3/31/17
NO.	SHEETS	

Sheet Information	
Issue	Date
Date	9/1/2016
Job Number	810409.000
Drawn	JD
Checked	KIS
Approved	
Title	



① LEVEL 01- GROUND FLOOR PLAN
1/8" = 1'-0"



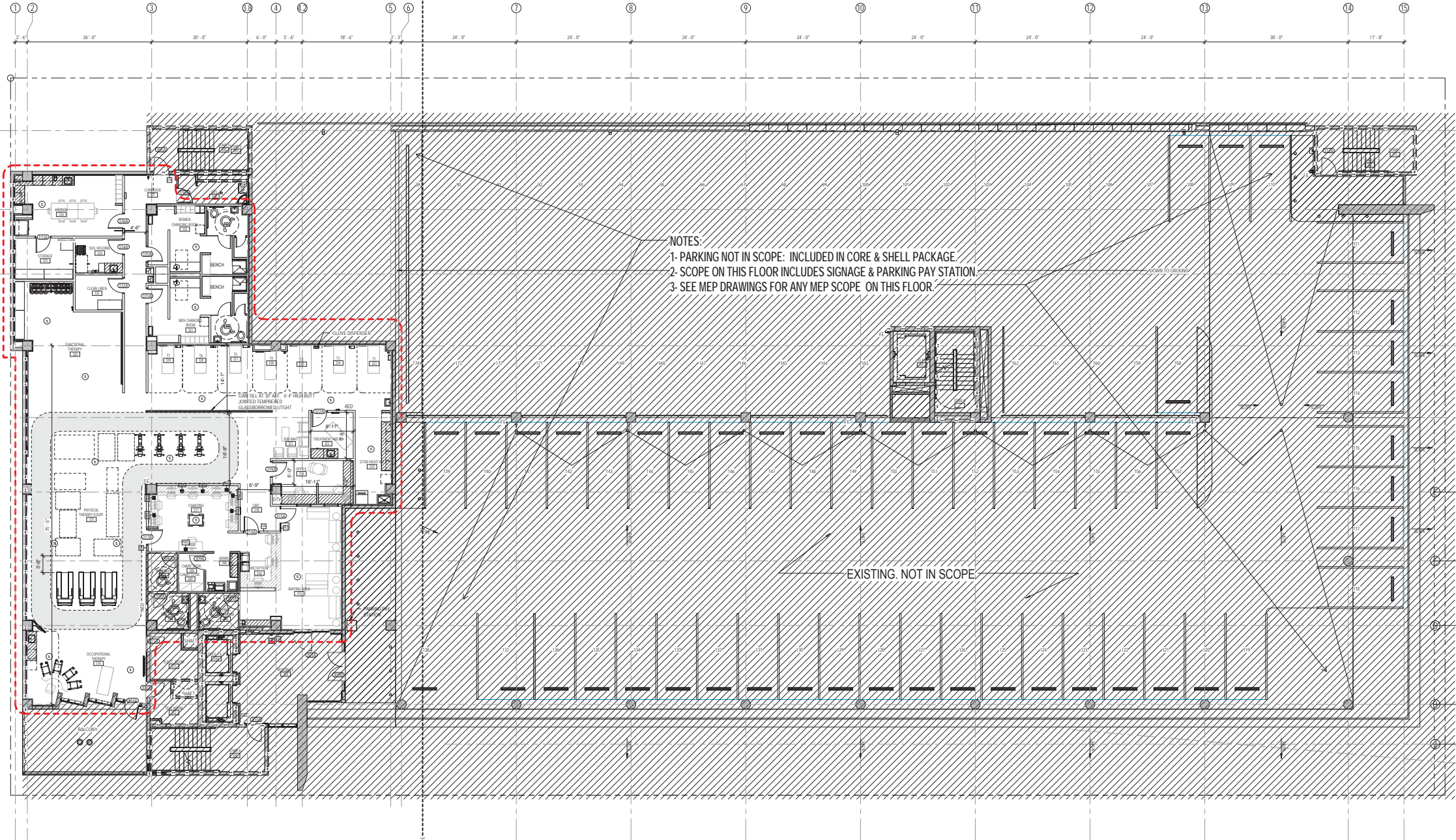
FLOOR PLAN LEGEND

- DENOTES AREA "NOT IN CONTRACT"
- EXISTING PARTITION TO REMAIN
- NEW PARTITION
- DOOR NUMBER, REFER TO DOOR AND HARDWARE SCHEDULE ON SHEET A-100 FOR FURTHER INFORMATION
- MILLWORK
- PARTITION TYPE
- KEYED NOTE

FLOOR PLAN GENERAL NOTES

- REFER TO TI-A-001 FOR GENERAL NOTES.
- REFER TO SHEET TI-A-001 FOR PARTITION TYPES.
- REFER TO SHEET TI-A-002 AND TI-A-003 FOR PARTITION DETAILS.

- FLOOR PLAN NOTES:
- REFER TO PARTITION TYPES DRAWING FOR ADDITIONAL INFORMATION ON WALL TYPES, WALL PROTECTION, SPECIAL REQUIREMENTS AND SOUND TRANSMITTANCE RATING REQUIREMENTS.
 - REFER TO ENLARGED PLANS FOR ADDITIONAL ARCHITECTURAL AND BUILDING MILLWORK INFORMATION.
 - PROVIDE SOAP DISPENSER AND PAPER TOWEL DISPENSER AT EVERY SINK.
 - REFER TO FURNITURE AND FIXTURE PLANS FOR INFORMATION ON FURNITURE AND FURNITURE SYSTEMS.
 - REFER TO SHEET T-100 FOR SIGNAGE, LEGEND AND ADDITIONAL SIGNAGE INFORMATION.
 - G.C. TO PROVIDE BLOCKING FOR ALL MOUNTED MILLWORK AND EQUIPMENT INCLUDING BUT NOT LIMITED TO COUNTERTOP SUPPORTS, WALL MOUNTED SHELVE, WALL AND CORNER GUARDS, MOUNTED BRACED AT WALLS, WALL MOUNTED EQUIPMENT, INCLUDING N.C. EQUIPMENT AND FURNITURE, G.C. TO COORDINATE LOCATION AND CONSTRUCTION SEQUENCE.



NOTES:
1- PARKING NOT IN SCOPE: INCLUDED IN CORE & SHELL PACKAGE.
2- SCOPE ON THIS FLOOR INCLUDES SIGNAGE & PARKING PAY STATION
3- SEE MEP DRAWINGS FOR ANY MEP SCOPE ON THIS FLOOR.

EXISTING. NOT IN SCOPE

1 LEVEL 03 FLOOR PLAN
1/8" = 1'-0"



FLOOR PLAN LEGEND

- DENOTES AREA "NOT IN CONTRACT"
- EXISTING PARTITION TO REMAIN
- NEW PARTITION
- DOOR NUMBER, REFER TO DOOR AND HARDWARE SCHEDULE ON SHEET A-100 FOR FURTHER INFORMATION
- MILLWORK
- PARTITION TYPE
- KEYED NOTE

FLOOR PLAN GENERAL NOTES

- REFER TO TI-A-00-01 FOR GENERAL NOTES.
- REFER TO SHEET TI-A-00-01 FOR PARTITION TYPES.
- REFER TO SHEET TI-A-00-02 AND TI-A-00-03 FOR PARTITION DETAILS.

FLOOR PLAN NOTES:
1. REFER TO PARTITION TYPES DRAWING FOR ADDITIONAL INFORMATION ON WALL TYPES, WALL PROTECTION, SPECIAL REQUIREMENTS AND SOUND TRANSMITTANCE RATING REQUIREMENTS.
2. REFER TO ENLARGED PLANS FOR ADDITIONAL ARCHITECTURAL AND BUILT IN MILLWORK INFORMATION.
3. PROVIDE SCAP DISPENSER AND PAPER TUBES, DISPENSER AT EVERY SINK.
4. REFER TO FURNITURE AND FINISH PLANS FOR INFORMATION ON FURNITURE AND FURNITURE SYSTEMS.
5. REFER TO SHEET A-100 FOR SIGNAGE LEGEND AND ADDITIONAL SIGNAGE INFORMATION.
6. G.C. TO PROVIDE BLOCKING FOR ALL WALL MOUNTED MILLWORK AND EQUIPMENT INCLUDING BUT NOT LIMITED TO COUNTERTOP SUPPORTS, WALL MOUNTED MILLWORK, WALL AND CORNER GUARDS, MOUNTED BRACED AT WALLS, WALL MOUNTED EQUIPMENT, INCLUDING N/C EQUIPMENT AND FURNITURE. S.C. TO COORDINATE LOCATION AND CONSTRUCTION SEQUENCE.

PERKINS
+ WILL

806 Douglas Rd.
Suite 300
Coral Gables, FL 33134
1.305.569.1333
1.305.569.1334
www.perkinswill.com

709 ALTON
ROAD

709 Alton Road Miami Beach,
Florida, 33139

STRUCTURE
DDA ENGINEERS, P.A.
4935 SW 7th Street
Address Line 2
1.305.666.5259

MEPP
BR-A
2600 Douglas Road, Suite 301
Address Line 2
1.305.529.1112

ACQUISITION CONSULTANTS
EDWARD DUGGER + ASSOCIATES
1239 SE Indian Street, Suite 103
Miami, FL 33130
1.772.296.8551

ISSUED FOR
PERMIT AND
CONSTRUCTION
9/1/2016



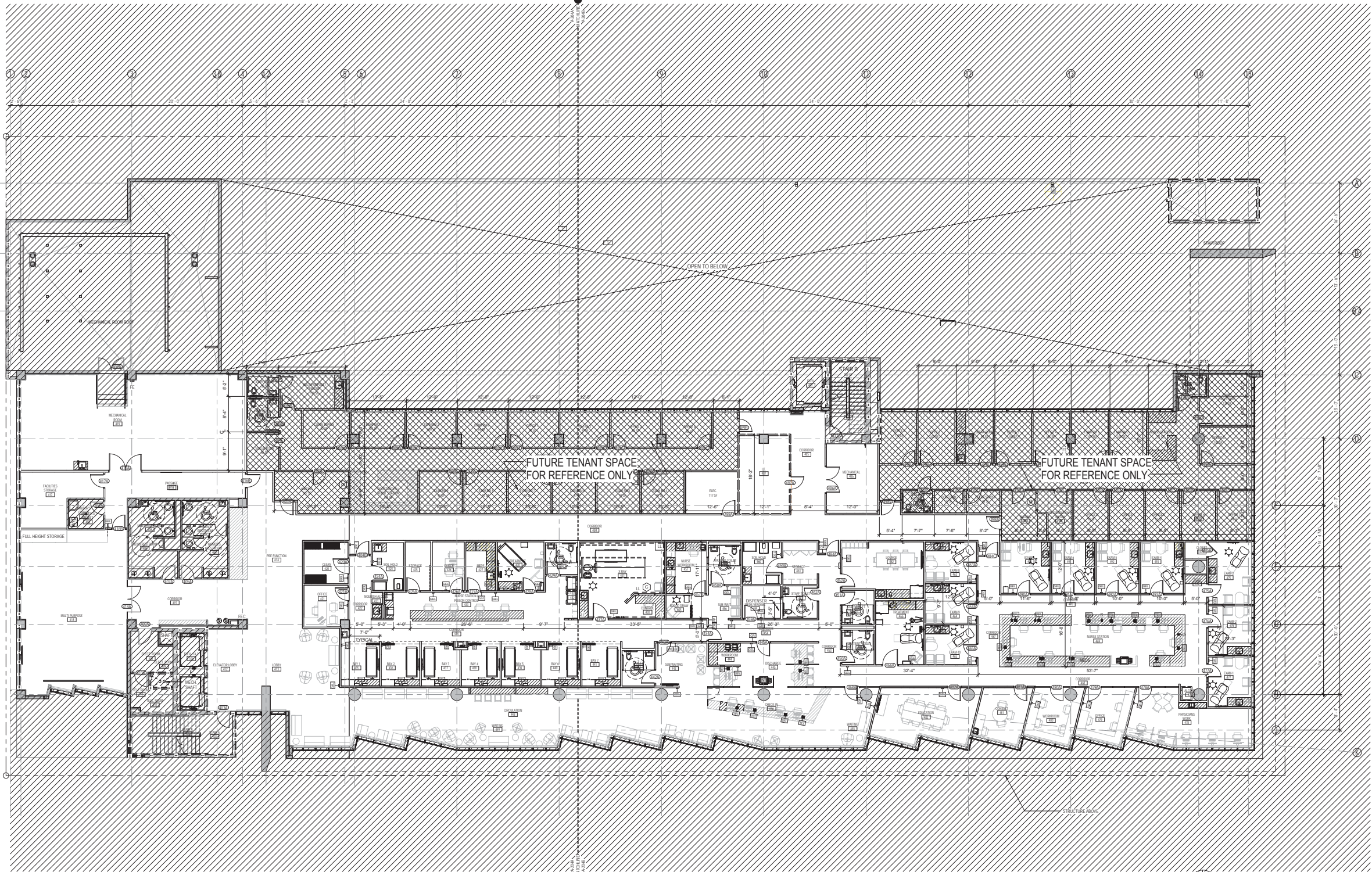
Revisions

TS	MYC COMMENTS & T.I.	3/3/17
NO	SHEETS	DATE
1	1	3/3/17
Sheet Information		
Date	9/1/2016	
Job Number	810409.000	
Drawn	Author	
Checked	Checker	
Approved	Approver	
Title		

LEVEL 03 FLOOR
PLAN

Sheet
TI-A-103

Copyright © 2013 Perkins + Will



1 LEVEL 04 - FLOOR PLAN
1/8" = 1'-0"



FLOOR PLAN LEGEND

- DENOTES AREA "NOT IN CONTRACT"
- EXISTING PARTITION TO REMAIN
- NEW PARTITION
- DOOR NUMBER, REFER TO DOOR AND HARDWARE SCHEDULE ON SHEET A-810 FOR FURTHER INFORMATION
- MILLWORK
- PARTITION TYPE
- KEYED NOTE

FLOOR PLAN GENERAL NOTES

- REFER TO TIA-80-01 FOR GENERAL NOTES.
- REFER TO SHEET TIA-80-01 FOR PARTITION TYPES.
- REFER TO SHEET TIA-80-01 AND TIA-80-02 FOR PARTITION DETAILS.

- FLOOR PLAN NOTES:**
- REFER TO PARTITION TYPES DRAWING FOR ADDITIONAL INFORMATION ON WALL TYPES, WALL PROTECTION, SPECIAL REQUIREMENTS AND SOUND TRANSMITTANCE RATING REQUIREMENTS.
 - REFER TO ENLARGED PLANS FOR ADDITIONAL ARCHITECTURAL AND BUILDING MILLWORK INFORMATION. PROVIDE SOAP DISPENSER AND PAPER TOWEL DISPENSER AT EVERY SINK.
 - REFER TO FURNITURE AND FINISHES AND FOR INFORMATION ON FURNITURE AND FURNITURE SYSTEMS.
 - REFER TO SHEET TIA-80-01 FOR SOUVENIR LEGEND AND ADDITIONAL SIGNAGE INFORMATION.
 - REFER TO SHEET TIA-80-01 FOR WALL MOUNTED MILLWORK AND EQUIPMENT, INCLUDING BUT NOT LIMITED TO COUNTERTOP SUPPORTS, WALL MOUNTED SHELVING, WALL AND CORNER GUARDS, MOUNTED BRACKET WALLS, WALL MOUNTED EQUIPMENT, INCLUDING ALL EQUIPMENT AND FURNITURE, ETC. TO COORDINATE LOCATION AND CONSTRUCTION SEQUENCE.

PERKINS
+ WILL

806 Douglas Rd.
Suite 300
Coral Gables, FL 33134
1.305.569.1333
1.305.569.1334
www.perkinswill.com

709 ALTON
ROAD



709 Alton Road Miami Beach,
Florida, 33139

STRUCTURE

DDA ENGINEERS, P.A.
4935 SW 7th Street
Address Line 2
1.305.464.5259

MEFP

BR-A
2600 Douglas Road, Suite 301
Address Line 2
1.305.529.1112

ACQUISITION CONSULTANTS

EDWARD DUGGER + ASSOCIATES
1239 SE Indian Street, Suite 103
Suite 103, 33139
1.772.286.8551

ISSUED FOR
PERMIT AND
CONSTRUCTION

9/1/2016



Revisions

NO.	REVISIONS & T.I.	DATE
15	ISSUED FOR PERMIT AND CONSTRUCTION	9/1/2016

Sheet Information

Date: 9/1/2016
Job Number: 810409.000
Drawn: Author
Checked: Checker
Approved: Approver
Title:

LEVEL 04 FLOOR
PLAN

Sheet
TIA-104

Copyright © 2013 Perkins + Will



18	PERMIT COMMENTS & FIELD COORDINATION	7/12/17
17	PERMIT COMMENTS & FIELD COORDINATION	4/10/17
16	CS AND T.I. FIELD COORDINATION	3/3/17
15	MITO COMMENTS & T.I. SHEETS	3/3/17

NO.	ISSUE	DATE
Sheet Information		
Date	9/1/2016	
Job Number	810409.000	
Drawn	JD	
Checked	KS	
Approved	KS	

FLOOR PLAN LEGEND

- DENOTES AREA "NOT IN CONTRACT"
- EXISTING PARTITION TO REMAIN
- NEW PARTITION
- DOOR NUMBER: REFER TO DOOR AND HARDWARE SCHEDULE ON SHEET A100 FOR FURTHER INFORMATION
- MILLWORK
- PARTITION TYPE
- KEYED NOTE

FLOOR PLAN GENERAL NOTES

- REFER TO TIA-00-01 FOR GENERAL NOTES.
- REFER TO SHEET TIA-001 FOR PARTITION TYPES.
- REFER TO SHEET TIA-002 AND TIA-003 FOR PARTITION DETAILS.

FLOOR PLAN NOTES

- REFER TO PARTITION TYPES DRAWING FOR ADDITIONAL INFORMATION ON WALL TYPES, WALL PROTECTION, SPECIAL REQUIREMENTS AND SOUND TRANSMITTANCE RATING REQUIREMENTS.
- REFER TO ENLARGED PLANS FOR ADDITIONAL ARCHITECTURAL AND BUILT IN MILLWORK INFORMATION.
- PROVIDE CORNER GUARDS AND PARTITION TUNNEL EXPANSION AT EVERY CORNER.
- REFER TO FURNITURE AND FINISH PLANS FOR INFORMATION ON FURNITURE AND FURNITURE SYSTEMS.
- REFER TO SHEET T-001 FOR SIGNAL LELING AND ADDITIONAL SIGNALING INFORMATION.
- C.C. TO PROVIDE BLOCKING FOR ALL WALL MOUNTED MILLWORK, WALL AND CORNER GUARDS, MOUNTED LIMITED TO COUNTERTOP SUPPORTS, WALL MOUNTED SHELVING, WALL AND CORNER GUARDS, MOUNTED BRACED AT WALLS, WALL MOUNTED EQUIPMENT, INCLUDING ALL EQUIPMENT AND FURNITURE, C.C. TO COORDINATE LOCATION AND CONSTRUCTION SEQUENCE.

EQUIPMENT GENERAL NOTES

- REFER TO SITE SPECIFIC DRAWINGS FOR ALL DETAILS RELATED TO MRI SYSTEMS, CT SCAN SYSTEMS, X-RAY SYSTEMS, ULTRASOUND AND MAMMOGRAPHY SYSTEMS.
- PROVIDE LOCKERS, CONDUITS DATA AND ELECTRICAL FILTERS AS REQUIRED FOR FUTURE INSTALLATIONS. COORDINATE LOCATION AND SIZE WITH OWNERS CONSULTANT.
- PROVIDE SHOP DRAWINGS AND PERMIT FOR ALL SYSTEMS FOR OWNER AND ARCHITECT'S REVIEW.
- PROVIDE WAVE GUIDES AND FILTERS AT ALL PENETRATIONS THROUGH RE ENCLOSURES.
- COORDINATE POWER REQUIREMENTS WITH VENDOR DRAWINGS.

FLOOR PLAN KEYED NOTES

- IMAGING EQUIPMENT TO BE INSTALLED BY IMAGING MANUFACTURER. SEE MANUFACTURER DIMS FOR REFERENCE AND COORDINATION PURPOSE.
- REFER TO PHYSICIST'S RADIATION SHIELDING REPORT FOR SHIELDING SPECIFICATIONS.



18	PERMIT COMMENTS & FIELD COORDINATION	7/12/17
17	PERMIT COMMENTS & FIELD COORDINATION	4/10/17
16	PERMIT COMMENTS & FIELD COORDINATION	3/3/17
15	PERMIT COMMENTS & FIELD COORDINATION	3/3/17
14	PERMIT COMMENTS & FIELD COORDINATION	1/13/17
13	PERMIT COMMENTS & FIELD COORDINATION	1/13/17
12	PERMIT COMMENTS & FIELD COORDINATION	1/13/17
11	PERMIT COMMENTS & FIELD COORDINATION	1/13/17
10	PERMIT COMMENTS & FIELD COORDINATION	1/13/17
9	PERMIT COMMENTS & FIELD COORDINATION	1/13/17
8	PERMIT COMMENTS & FIELD COORDINATION	1/13/17
7	PERMIT COMMENTS & FIELD COORDINATION	1/13/17
6	PERMIT COMMENTS & FIELD COORDINATION	1/13/17
5	PERMIT COMMENTS & FIELD COORDINATION	1/13/17
4	PERMIT COMMENTS & FIELD COORDINATION	1/13/17
3	PERMIT COMMENTS & FIELD COORDINATION	1/13/17
2	PERMIT COMMENTS & FIELD COORDINATION	1/13/17
1	PERMIT COMMENTS & FIELD COORDINATION	1/13/17

Date	9/1/2016
Job Number	810409.000
Drawn	Author
Checked	Checker
Approved	Approver
Title	

FLOOR PLAN LEGEND

- DENOTES AREA NOT IN CONTRACT
- EXISTING PARTITION TO REMAIN
- NEW PARTITION
- DOOR NUMBER, REFER TO DOOR AND HARDWARE SCHEDULE ON SHEET A-B10 FOR FURTHER INFORMATION
- MILLWORK
- PARTITION TYPE
- KEYED NOTE

FLOOR PLAN GENERAL NOTES

- REFER TO TI-A-201 FOR GENERAL NOTES.
- REFER TO SHEET TI-A-201 FOR PARTITION TYPES.
- REFER TO SHEET TI-A-202 AND TI-A-203 FOR PARTITION DETAILS.

- FLOOR PLAN NOTES:
- REFER TO PARTITION TYPES DRAWING FOR ADDITIONAL INFORMATION ON WALL TYPES, WALL PROTECTION, SPECIAL REQUIREMENTS AND SOUND TRANSMITTANCE RATING REQUIREMENTS.
 - REFER TO ENLARGED PLANS FOR ADDITIONAL ARCHITECTURAL AND BUILT IN MILLWORK INFORMATION.
 - PROVIDE SOAP DISPENSER AND PAPER TOWEL DISPENSER AT EVERY SINK.
 - REFER TO FURNITURE AND FINISH PLANS FOR INFORMATION ON FURNITURE AND FURNITURE SYSTEMS.
 - REFER TO SHEET T-100 FOR SCENE, LEGEND AND ADDITIONAL SCENE INFORMATION.
 - G.C. TO PROVIDE BLOCKING FOR ALL WALL MOUNTED MILLWORK, AND EQUIPMENT INCLUDING BUT NOT LIMITED TO COUNTER TOP SUPPORTS, WALL MOUNTED SHELVING, WALL AND CORNER GUARDS, MOUNTED BASED AT WALLS, WALL MOUNTED EQUIPMENT INCLUDING ALL EQUIPMENT AND FURNITURE. G.C. TO COORDINATE LOCATION AND CONSTRUCTION REQUIREMENTS.

FLOOR PLAN KEYED NOTES

- STANDARD PRICE SCHED TRIPLE SINK BY STEEL. REFER TO EQUIPMENT MANUFACTURER DWGS FOR REFERENCE AND COORDINATION PURPOSE.
- WASHER/DISINFECTOR EQUIPMENT BY CUSTOM ULTRASONIC, INC. REFER TO EQUIPMENT MANUFACTURER DWGS FOR REFERENCE AND COORDINATION PURPOSE.





FLOOR PLAN NOTES:

- 1. REFER TO PARTITION TYPES DRAWING FOR ADDITIONAL INFORMATION ON WALL TYPES, WALL PROTECTION, SPECIAL REQUIREMENTS AND SOUND TRANSMITTANCE RATING REQUIREMENTS.
- 2. REFER TO THE ENLARGED PLANS FOR ALL ADJUSTABLE ARCHITECTURE, AND BUILD IN MILLWORK INFORMATION.
- 3. PROVIDE SPOKE DISPENSER AND PAPER TOWEL DISPENSER AT EVERY SINK.
- 4. REFER TO FURNITURE AND FINISH PLANS FOR INFORMATION ON FURNITURE AND FURNITURE SYSTEMS.
- 5. REFER TO SHEET 1-300 FOR SKRANGE LEGEND AND ADDITIONAL SIGNAGE INFORMATION.
- 6. C.G. TO PROVIDE B.O.C.S. FOR ALL WALL MOUNTED MILLWORK, AND EQUIPMENT INCLUDING BUT NOT LIMITED TO COUNTER TOPS, WALL MOUNTED SHELVEING, WALL AND CORNER GRABBERS, MOUNTED BRACED AT WALLS, WALL MOUNTED EQUIPMENT, INCLUDING N.I.C. EQUIPMENT AND FURNITURE, G.C. TO COORDINATE LOCATION AND CONSTRUCTION SEQUENCING.

Copyright © 2013 Perkins+Will

ISSUED FOR
PERMIT AND
CONSTRUCTION
9/1/2016



Revisions

18	PERMIT COMMENTS & FIELD COORDINATION	7/1/2017
17	PERMIT COMMENTS & FIELD COORDINATION	4/10/17
16	PERMIT COMMENTS & FIELD COORDINATION	3/3/17
15	MEET COMMENTS & T.I. SHEETS	3/3/17
2	QA & QC REVISIONS	9/22/16
NO	ISSUE	DATE

Sheet Information

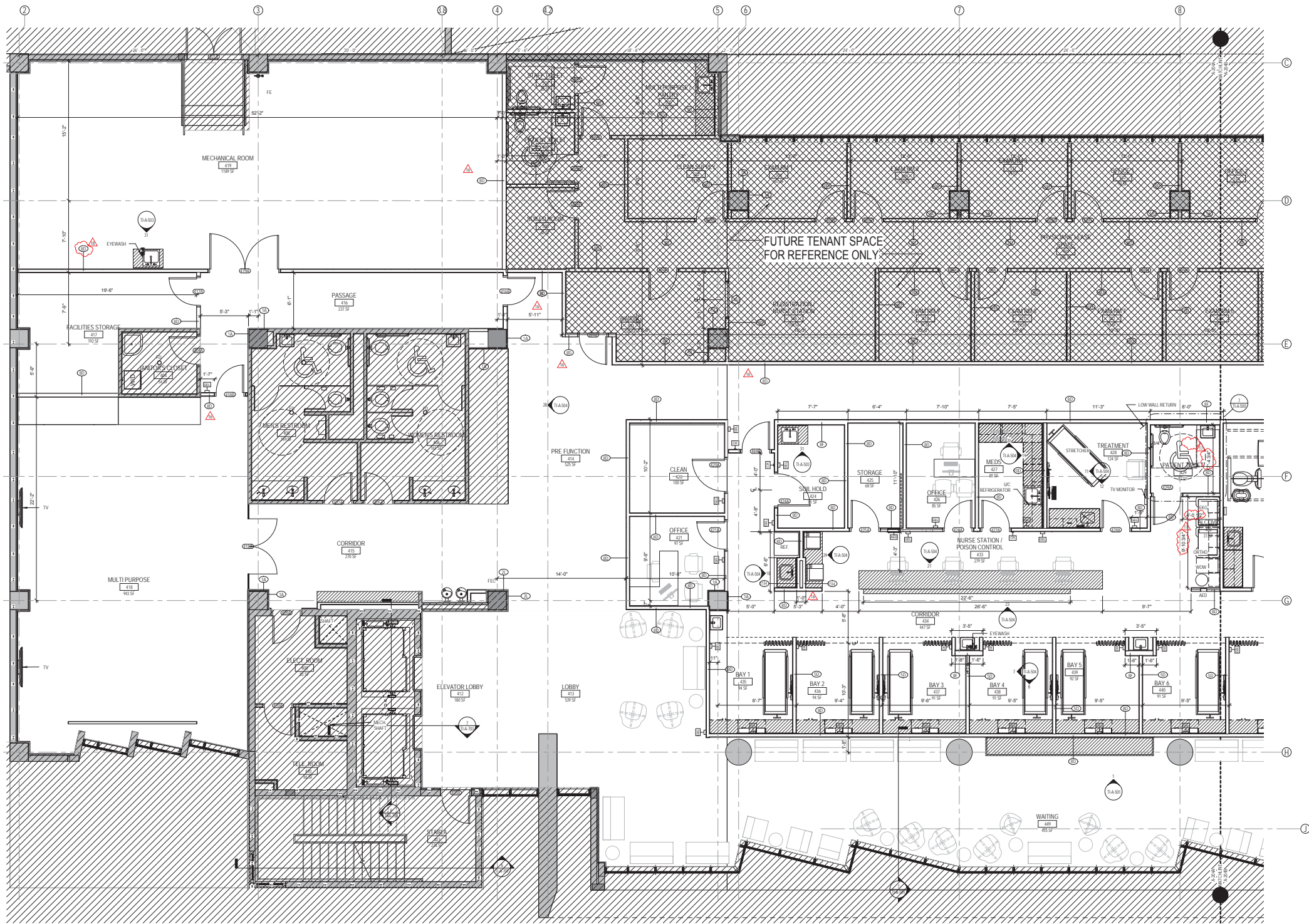
Date	9/1/2016
Job Number	810409.000
Drawn	Author
Checked	Checker
Approved	Approver

Title

LEVEL 04
ENLARGED FLOOR
PLAN PART A

Sheet

TI-A-204A



1 LEVEL 04 ENLARGED FLOOR PLAN PART A
1/4" = 1'-0"

FLOOR PLAN LEGEND

- DENOTES AREA "NOT IN CONTRACT"
- EXISTING PARTITION TO REMAIN
- NEW PARTITION
- DOOR NUMBER, REFER TO DOOR AND HARDWARE SCHEDULE ON SHEET A-810 FOR FURTHER INFORMATION
- MILLWORK
- PARTITION TYPE
- KEYED NOTE

FLOOR PLAN GENERAL NOTES

- REFER TO TI-A-001 FOR GENERAL NOTES.
- REFER TO SHEET TI-A-801 FOR PARTITION TYPES.
- REFER TO SHEET TI-A-802 AND TI-A-803 FOR PARTITION DETAILS.

FLOOR PLAN NOTES

- REFER TO PARTITION TYPES DRAWING FOR ADDITIONAL INFORMATION ON WALL TYPES, WALL PROTECTION, SPECIAL REQUIREMENTS AND SOUND TRANSMITTANCE RATING REQUIREMENTS.
- REFER TO ENLARGED PLANS FOR ADDITIONAL ARCHITECTURAL AND BUILDING MILLWORK INFORMATION.
- PROVIDE SOAP DISPENSER AND PAPER TOWEL DISPENSER AT EVERY SINK.
- REFER TO FURNITURE AND FIXTURE PLANS FOR INFORMATION ON FURNITURE AND FURNITURE SYSTEMS.
- REFER TO SHEET 1.00 FOR SIGNAGE LEGEND AND ADDITIONAL SIGNAGE INFORMATION.
- G.C. TO PROVIDE BLOCKING FOR ALL WALL MOUNTED MILLWORK AND EQUIPMENT INCLUDING BUT NOT LIMITED TO COUNTERTOP SUPPORTS, WALL MOUNTED SHELVING, WALL AND CORNER GUARDS, MOUNTED BRACKET WALLS, WALL MOUNTED EQUIPMENT INCLUDING A.I.C. EQUIPMENT AND FURNITURE, ETC. TO COORDINATE LOCATION AND CONSTRUCTION SEQUENCE.

ISSUED FOR
PERMIT AND
CONSTRUCTION
9/1/2016



Revisions

1 LEVEL 04 ENLARGED FLOOR PLAN PART B
1/4" = 1'-0"



FLOOR PLAN NOTES:

1. REFER TO PARTITION TYPES DRAWING FOR ADDITIONAL INFORMATION ON WALL TYPES, WALL PROTECTION, SPECIAL REQUIREMENTS AND SOUND TRANSMITTANCE RATING REQUIREMENTS.
2. REFER TO ENLARGED PLANS FOR ADDITIONAL ARCHITECTURAL AND BUILT IN MILLWORK INFORMATION.
3. PROVIDE SOAP DISPENSER AND PAPER TOWEL DISPENSER AT EVERY SINK.
4. REFER TO FURNITURE AND FINISH PLANS FOR INFORMATION ON FURNITURE AND FURNITURE SYSTEMS.
5. REFER TO SHEET T1-A-001 FOR SCHEDULE LEGEND AND ADDITIONAL SCHEDULE INFORMATION.
6. G.C. TO PROVIDE BLOCKING FOR ALL WALL MOUNTED MILLWORK AND EQUIPMENT, INCLUDING BUT NOT LIMITED TO COUNTERTOP SUPPORTS, WALL MOUNTED SHELVEING, WALL AND CORNER GUARDS, MOUNTED BRACKETS AT WALLS, WALL MOUNTED EQUIPMENT, INCLUDING N.I.C. EQUIPMENT AND FURNITURE. G.C. TO COORDINATE LOCATION AND CONSTRUCTION SEQUENCE.

FLOOR PLAN REVISION NOTES:

1. IMAGING EQUIPMENT TO BE INSTALLED BY IMAGING MANUFACTURER. SEE MANUFACTURER DIMS FOR REFERENCE AND COORDINATION PURPOSE.
2. REFER TO PHYSICIST'S RADIATION SHIELDING REPORT FOR SHIELDING SPECIFICATIONS.

FLOOR PLAN LEGEND

--- DENOTES AREA "NOT IN CONTRACT"
--- EXISTING PARTITION TO REMAIN
--- NEW PARTITION
--- DOOR NUMBER, REFER TO DOOR AND HARDWARE SCHEDULE ON SHEET A-015 FOR FURTHER INFORMATION
--- MILLWORK
--- PARTITION TYPE
--- KEYED NOTE

FLOOR PLAN GENERAL NOTES

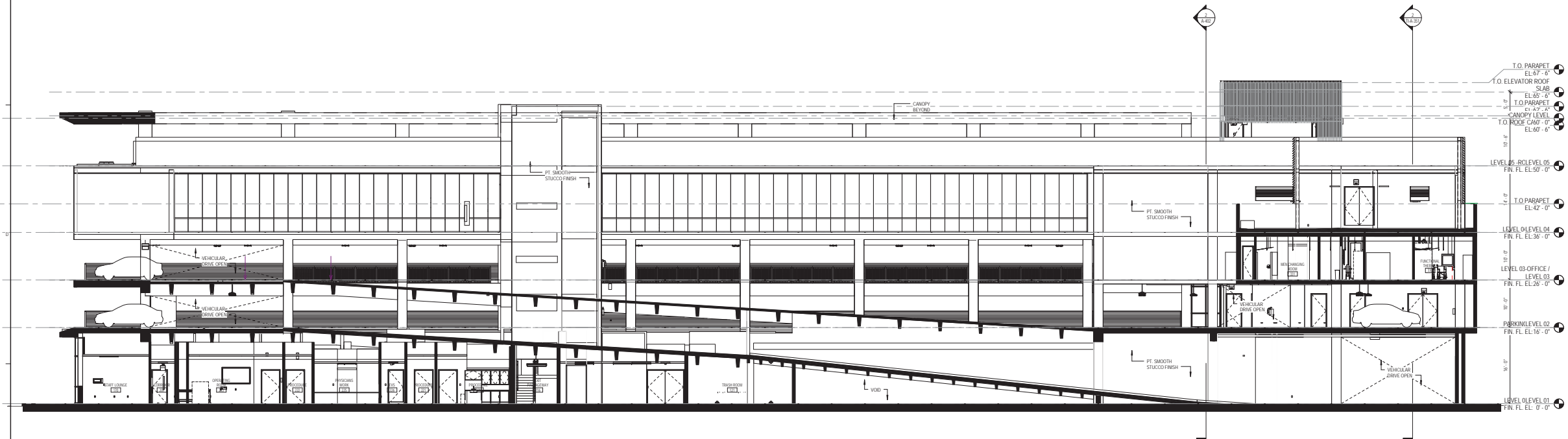
1. REFER TO T1-A-001 FOR GENERAL NOTES.
2. REFER TO SHEET T1-A-001 FOR PARTITION TYPES.
3. REFER TO SHEET T1-A-002 AND T1-A-003 FOR PARTITION DETAILS.

18	PERMIT COMMENTS & FIELD COORDINATION	7/12/17
16	CS AND T1 FIELD COORDINATION	3/3/17
15	SMITC COMMENTS & T1 SHEETS	3/3/17
NO	ISSUE	DATE

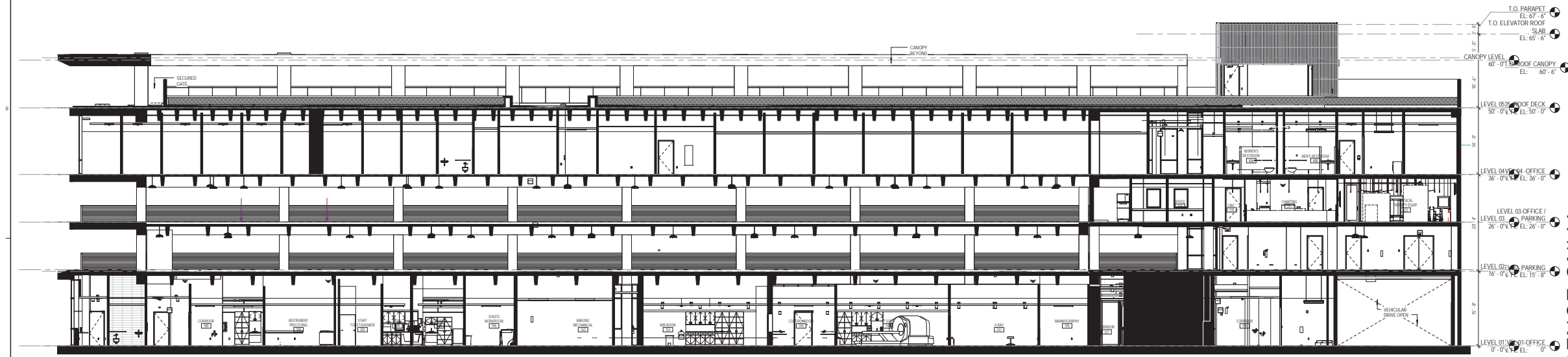
Sheet Information		
Date	9/1/2016	
Job Number	810409.000	
Drawn	Author	
Checked	Checker	
Approved	Approver	
Title		

LEVEL 04
ENLARGED FLOOR
PLAN PART B

Sheet
TI-A-204B



2 BUILDING LONGITUDINAL SECTION 1
1/8" = 1'-0"



1 BUILDING LONGITUDINAL SECTION 2
1/8" = 1'-0"

PERKINS
+ WILL

806 Douglas Rd.
Suite 300
Coral Gables, FL 33134
1.305.589.1333
1.305.589.1334
www.perkinswill.com

709 ALTON
ROAD



709 Alton Road Miami Beach,
Florida, 33139

STRUCTURE
DDA ENGINEERS, P.A.
4930 SW 7th Street
Address Line 2
1.305.666.5259

MEPP
BR-A
2600 Douglas Road, Suite 301
Address Line 2
1.305.529.1112

ACCUITIONAL CONSULTANTS
EDWARD DUGGER + ASSOCIATES
1239 SE Indian Street, Suite 103
Shore, FL 33486
1.772.286.8351

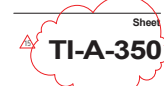
ISSUED FOR
PERMIT AND
CONSTRUCTION
9/1/2016



Revisions

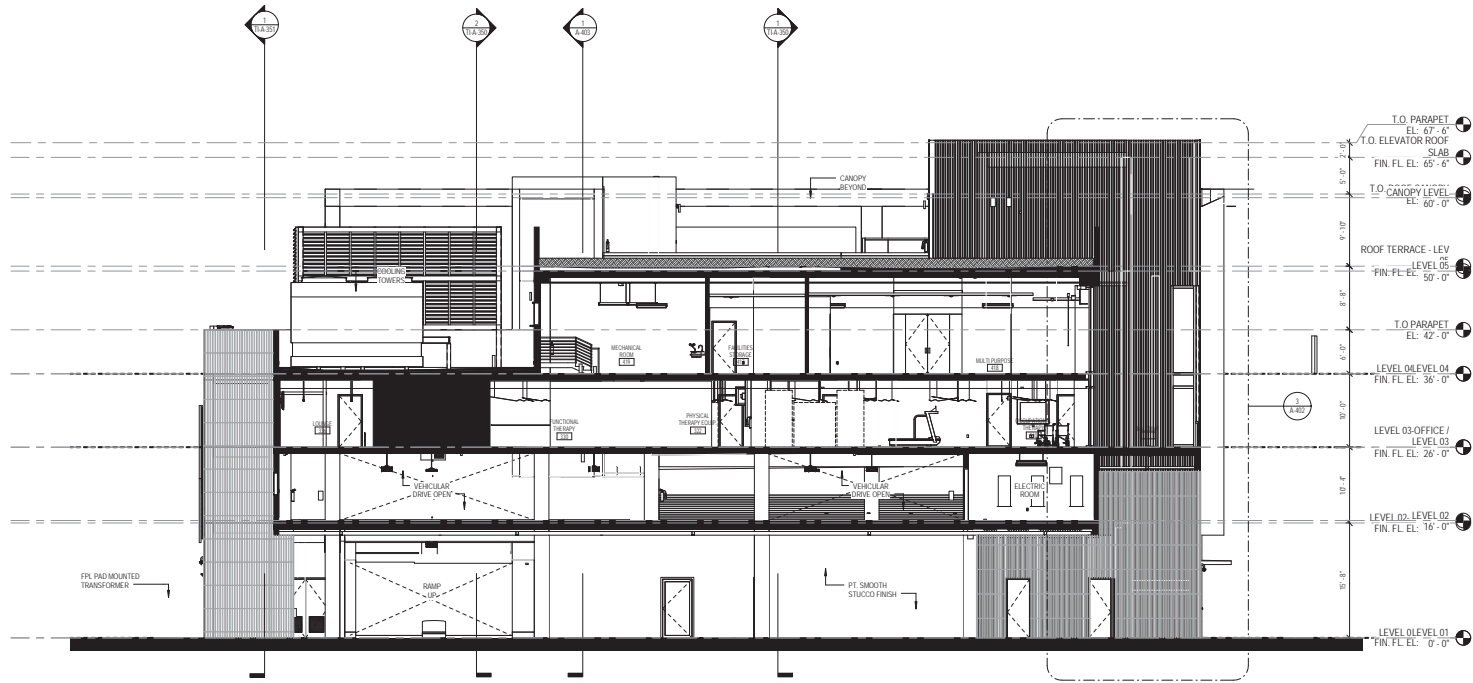
15	NYC COMMENTS & T.I.	3/3/17
NO	SHEETS	DATE
Sheet Information		
Date	9/1/2016	
Job Number	810429.000	
Drawn	Author	
Checked	Checker	
Approved	Approver	
	Title	

BUILDING
SECTIONS

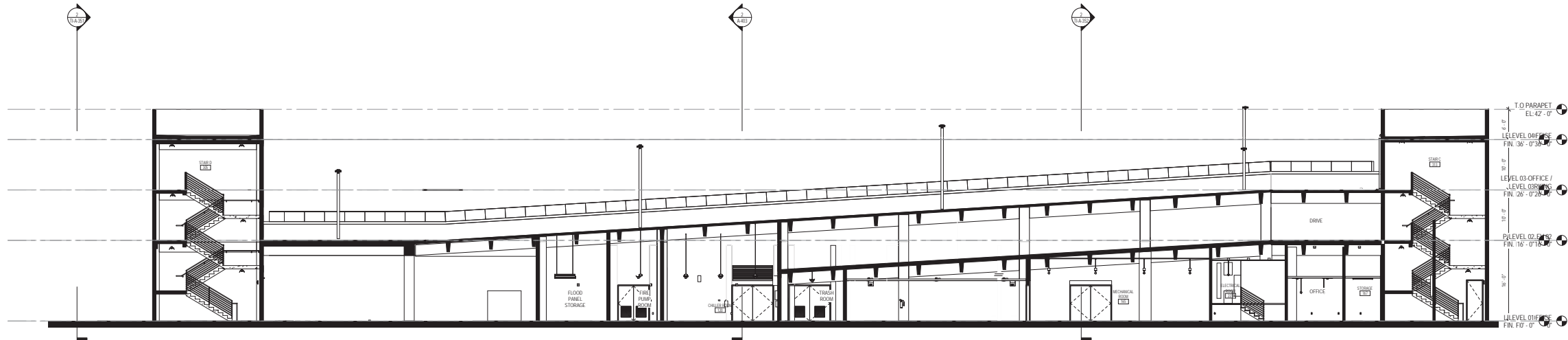


Copyright © 2013 Perkins+Will

FOR REFERENCE ONLY



② BUILDING CROSS SECTION 3
1/8" = 1'-0"



① BUILDING LONGITUDINAL SECTION 3
1/8" = 1'-0"

PERKINS
+ WILL

806 Douglas Rd.
Suite 300
Coral Gables, FL 33134
1 305.549.1333
1 305.549.1334
www.perkinswill.com

709 ALTON
ROAD

**Baptist Health
South Florida**
709 Alton Road Miami Beach,
Florida, 33139

STRUCTURE
DDA ENGINEERS, P.A.
4930 SW 7th Street
Address Line 2
1 305.444.5259

MEPP
BR-A
2600 Douglas Road, Suite 301
Address Line 2
1 305.529.1112

ACCUSTICAL CONSULTANTS
EDWARD DUGGER + ASSOCIATES
1239 SE Indian Street, Suite 103
Shawnee, FL 33496
1 772.286.8551

ISSUED FOR
PERMIT AND
CONSTRUCTION
9/1/2016



Revisions

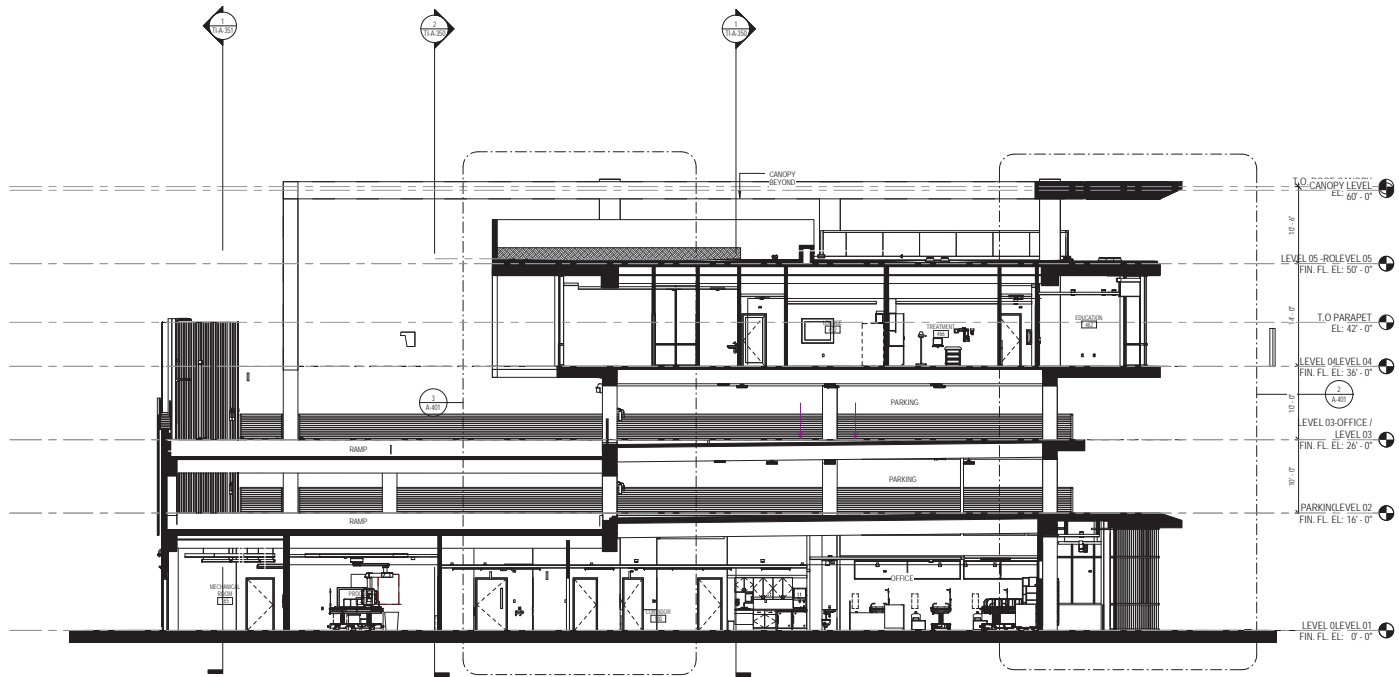
15	MTC COMMENTS & T.I. SHEETS		3/3/17
NO	ISSUE	DATE	
Sheet Information			
Date	9/1/2016		
Job Number	810409.000		
Drawn	Author		
Checked	Checker		
Approved	Approver		
Title			

BUILDING
SECTIONS

Sheet
TI-A-351

Copyright © 2013 Perkins+Will

FOR REFERENCE ONLY



2 BUILDING CROSS SECTION 1
1/8" = 1'-0"

PERKINS
+ WILL

806 Douglas Rd.
Suite 300
Coral Gables, FL 33134
1 305.569.1333
1 305.569.1334
www.perkinswill.com

709 ALTON
ROAD



709 Alton Road Miami Beach,
Florida, 33139

STRUCTURE

DDA ENGINEERS, P.A.
4930 SW 7th Street
Address Line 2
1 305.466.5259

MEFP

BR-A
2600 Douglas Road, Suite 301
Address Line 2
1 305.529.1112

ACOUSTICAL CONSULTANTS

EDWARD DUGGER + ASSOCIATES
1239 SE Indian Street, Suite 103
Shore, FL 33488
1 772.286.8551

ISSUED FOR
PERMIT AND
CONSTRUCTION
9/1/2016



Revisions

15	MTCT COMMENTS & T.I.	3/3/17
SHEETS		
NO.	ISSUE	DATE
Sheet Information		
Date	9/1/2016	
Job Number	810409.000	
Drawn	Author	
Checked	Checker	
Approved	Approver	
	Title	

BUILDING
SECTIONS

Sheet
TI-A-352

Copyright © 2013 Perkins+Will

FOR REFERENCE ONLY

