

72ND & PARK

7145 CARLYLE AVE., 7144 BYRON AVE.

MIAMI BEACH, FLORIDA 33141

DESIGN REVIEW BOARD SUBMITTAL

ARQUITECTONICA GEO

LANDSCAPE ARCHITECTS

2900 OAK AVE

MIAMI, FLORIDA 33133

Phone (305)372 1812 Fax (305)372 1175

Website: www.arquitectonicageo.com

INDEX OF DRAWINGS		
DESCRIPTION		
(CITY OF MIAMI BEACH DRB)		
1	L0-000	LANDSCAPE INDEX OF DRAWINGS
2	L0-001	LANDSCAPE NOTES
3	L0-002	LANDSCAPE CALCULATIONS
4	L0-003	PLANT IMAGES
5	L0-004	TREE SURVEY
6	L1-000	TREE DISPOSITION PLAN
7	L1-001	TREE MITIGATION PLAN
8	L1-100	GROUND LEVEL RENDERED PLAN
9	L1-110	GROUND LEVEL LANDSCAPE PLAN
10	L1-210	PODIUM LEVEL LANDSCAPE PLAN
11	L1-310	ROOF LANDSCAPE PLAN
12	L1-410	PHASE II LANDSCAPE PLAN
13	L3-000	GROUND LEVEL SECTIONS
14	L3-001	GROUND LEVEL SECTIONS
15	L4-100	GROUND LEVEL ENLARGED RENDERED PLAN
16	L4-110	GROUND LEVEL ENLARGED PLAN
17	L5-110	HARDSCAPE DETAILS
18	L5-120	PLANTING DETAILS
19	L5-210	PODIUM LEVEL LANDSCAPE DETAILS
20	L6-000	TREE DISPOSITION SCHEDULE
21	L6-001	TREE MITIGATION SCHEDULE
22	L6-100	GROUND LEVEL LANDSCAPE SCHEDULES
23	L6-200	PODIUM LEVEL LANDSCAPE SCHEDULES
24	L6-300	ROOF LANDSCAPE SCHEDULES
25	L6-400	PHASE II LANDSCAPE SCHEDULES



ARQUITECTONICA

2900 Oak Avenue, Miami, FL 33133
T 305.372.1812 F 305.372.1175

ARQUITECTONICA **GEO**

2900 Oak Avenue, Miami, FL 33133
T 305.372.1812 F 305.372.1175

No copies, transmissions, reproductions, or electronic manipulation of any portion of these drawings in whole or in part are to be made without the express written permission of Arquitectonica Internacional. All designs indicated in these drawings are property of Arquitectonica Internacional. All copyrights reserved (c) 2019. The data included in this study is conceptual in nature and will continue to be modified throughout the course of the projects development with the eventual integration of structural, MEP and life safety systems. As these are further refined, the numbers will be adjusted accordingly.

FINAL SUBMITTAL DRB
7145 CARLYLE AVE,
7144 BYRON AVE,
MIAMI BEACH, FL 33141

72ND & PARK - LANDSCAPE INDEX

DATE:
07/08/2019

L0-000

GENERAL NOTES

- These plans reflect the scope of the Landscape Architect external services. For Architectural, Civil, please refer to the appropriate consultant documents.
- The locations of all site amenities are approximate and may be adjusted in the field with owner and/or their representatives approval. See plans for locations of fixed amenities.
- The locations of plants, as shown in these plans, are approximate. The final locations may be adjusted to accommodate unforeseen field conditions to comply with safety criteria, to avoid creating unsafe sight conditions, or as otherwise directed by or approved by the landscape architect or owner's representative.
- Construction shall comply with all local building codes.
- All dimensions shall be verified in the field prior to construction. Written dimensions shall take precedence over scaled drawings.
- If a discrepancy should arise between layout geometry and design intent, design intent shall take precedence.

GENERAL GRADING NOTES

- All grading information provided is intended for aesthetic purposes and to show relationships only. For detailed grading information see Civil Engineers drawings.
- Rough grading and site preparation shall be completed for review by Landscape Architect / or owners representative prior to final grading.
- Roadway grading and transition areas to be reviewed and approved by Civil / Traffic Engineer.
- Grading and calculations for retention areas to be provided by Civil Engineers.
- Contractor shall not substantially modify grading plan without the approval of designer. All site aesthetic grading is subject to review and approval of the landscape architect or owner's representative.
- All graded areas shall be dragged with a drag mat or hand radeel to blend in small imperfections and round off any sharp lines that may have been constructed by equipment. All areas to be planted shall have no water holding pockets.

GENERAL SITE LIGHTING NOTES

- All electrical wiring and circuiting by Electrical Engineer in future permit set.
- Shop drawings shall be required by manufacturers and/or contractors for all connections, footers, electrical requirements and color samples for review and approval by the landscape architect or owner's representative.
- Photometrics to be provided by the Engineer and coordinated with Landscape Architect/or owner representative.
- Transformers and other exterior ballasts shall be hidden from general view with landscaping and /or appropriate enclosures. This should be coordinated with Landscape architect.

GENERAL LANDSCAPE NOTES

- The Contractor shall be responsible for verifying all underground utilities prior to digging in any area. The contractor shall notify all necessary utility companies 48 hours minimum prior to digging for verification of all underground utilities, irrigation and all other obstructions and coordinate with Owner's Representative prior to initiating operations. Drawings are prepared according to the best information available at the time of preparing documents.
- The contractor is responsible to ensure proper watering and maintenance of new and relocated plant materials during the one year warranty period.
- Contractor is to report any discrepancies between the construction drawings and field conditions to the Owner's Representative immediately.
- Landscape Contractor shall coordinate all work with related contractors and with the general construction of the project in order not to impede the progress of the work of others or the contractor's own work. Landscape contractor shall provide schedule of his/her work two weeks in advance, beginning two weeks prior to commencing landscape trade construction.
- The location of the landscape holding area will be identified by the Owner or Owner's Representative. The Contractor shall adhere to the access routes to and from the holding area without disrupting or impeding access to the site by others. Contractor is responsible for the maintenance of all plant materials, including temporary irrigation and fertilization if necessary during construction, while being held in landscape holding areas.
- The Contractor shall bear all costs of testing of soils, amendmrents, etc. associated with the work and included in the specifications. Prior to commencement of the landscape planting work the Contractor shall provide complete soil tests with recommendations for soil treatment in the construction area.
- Landscape Contractor shall field stake the location of all plant material or field stake the plants prior to initiating installation for the review and approval of the Owner's representative and/or Landscape Architect. Note: **No planting shall commence until there is a functional irrigation system in the area to be planted. No trees shall be planted on top of irrigation lines.**
- Landscape Contractor shall field adjust location of plant material as necessary to avoid damage to all existing underground utilities and/ or existing above ground elements. All changes required shall be completed at the Contractor's expense and shall be coordinated with Owner's Representative and the Landscape Architect.
- Any substitutions in size and/or plant species must be approved by the Landscape Architect or Owner's Representative prior to modification of the contract, purchasing and delivery of plants. All plants will be subject to approval by Landscape Architect and/or Owner's Representative before planting can begin. All plant materials will not include any plants considered to be invasive by the City of Miami Beach.
- Contractor shall refer to the landscape planting details, general notes and the project manual and/or specifications for further and complete landscape planting instructions.
- Landscape Contractor shall coordinate all planting work with permanent or temporary irrigation work. Landscape Contractor shall be responsible for all hand watering as required by Owner's Representative to supplement irrigation watering and rainfall. Landscape Contractor shall be responsible for hand watering in all planting areas, regardless of the status of existing or proposed irrigation.
- Landscape Contractor shall clean the work areas at the end of each working day. Rubbish and debris shall be collected and deposited off-site or in an approved disposal area daily. All materials, products and equipment shall be stored in an organized fashion as directed by the Owner's Representative.
- Landscape Contractor shall re-grade all areas disturbed by plant removal, relocation and/or installation work. Landscape Contractor shall replace (by equal size and quality) any and all existing or new plant material disturbed or damaged by plant removal, relocation, and/or installation work.
- Site distance concerns must be maintained for clear site visibility from thirty (30) inches to seventy-two (72) inches, tree trunks are excluded as specified in appropriate municipal codes.

GENERAL LANDSCAPE NOTES CONT'D

- Guying / staking practices shall not permit nails, screws, wires, etc., to penetrate outer surface of any tree or palm. Trees or palms rejected due to this practice shall be replaced at the Contractor's expense.
- Burlap material, wire cages, plastic straps, etc., must be cut and removed from top one-third (1/3) of root ball.
- Trees grown in grow bags or grow bag type material are not allowed.
- All planting materials shall meet or exceed local requirements as specified by local plant standards.
- All landscape installations shall meet or exceed the minimum requirements as shown in appropriate municipal codes.
- The Contractor shall be responsible for the guarantee of all plant material for a period of twelve (12) months from the date of substantial completion. Substantial completion constitutes the beginning of guarantee period.
- Plant size specifications take precedence over container size.
- Contractor to verify quantities and report any discrepancies to Owners representative and/or Landscape Architect.
- All plant material shall be graded Florida #1 or better.
- All proposed planting beds will be planted out correctly with proper spacing.
- All tree work will require permitting by a registered Miami-Dade County Tree Trimmer.
- Burlap, wire cages, etc., be removed half way down root balls.

SOIL PREPARATION AND SOIL MIX

- All plants noted for removal shall be relocated as shown on plans or removed and properly disposed of offsite at contractors expense unless otherwise noted.
- Before finishing top soil grading, scarify & rake subsoil clear of stones (1" diameter and larger), debris, rubbish, and remaining roots from removed plant material to a depth of 6".
- Plant holes should be dug and the sides and bottom of the hole should be stable, regardless of depth. Soil scarification is necessary if sides of the hole are compacted.
- Contractor to apply approved pre-emergent herbicide in accordance with manufacturer's rate and specifications. Contractors to provide manufacturer's specifications for approval.
- Planting soil mix for planters, trees, shrubs, and ground cover & grasses shall be determined by soil analysis prior to planting landscape.

The planting soil mix should be what comes out of the hole so the plant adapts to the surrounding/existing soil and grows into it. This is why the sides and the bottom of the planting hole should never be compacted with the digging implements. Never fertilize newly planted plants and trees. Please note that peat moss will eventually decompose and clog soil pores thereby inhibiting the plants water and oxygen consumption.

6. Topsoil shall be natural, fertile, agricultural soil capable of sustaining vigorous plant growth. It shall be of uniform composition throughout, with admixture of subsoil, it shall be free of stones, lumps, live plants and their roots, sticks, and other extraneous material. Top soil brought in should match as well as possible the existing soil texture and Ph. Planted material should never be "mounded" or raised; the soil will eventually wash away exposing the roots and it will be difficult to establish the plant material due to drought and excessive soil transpiration. All plant/tree material should be installed with the root collar exposed (approximately 1/2" to 1"). Landscape contractor should find the uppermost lateral root and plant that just below the soil surface.

7. Smooth topsoil without compaction to two inches (2") below finish grade in areas to be sodded without compaction.

8. Finish grade all topsoil areas to a smooth non-compacted, even surface assuring positive drainage away from the structures and eliminate any low areas except in retention areas where water may collect.

9. Contractor to remove debris and excess material immediately from job site while keeping in mind that heavy equipment will compact soil to the detriment of water drainage and the health of the newly installed plants. All planting areas with compacted soil will have surfaces scarified to a min. of 6" in depth.

PLANTING SPECIFICATIONS

1. The contractor is responsible for maintaining, in full, all planting areas (including watering, spraying, mulching, mowing, fertilizing, etc.) Until the job is accepted, in full, by the owner, its representative and Landscape Architect.

2. All plant material shall be protected during transport and delivery to final location with shade cloth or other acceptable means of windburn prevention. Plant/tree material shall conform to Florida # 1 as described in Florida grades & standards, the latest issue.

3. All trees must be guyed or staked as shown in details.

4. When plant material is delivered onsite, it shall not be laid down for more than two hours. Plant material when stored onsite shall be placed and maintained in good condition in a vertical position. All plants held onsite shall be kept watered regularly in sufficient amounts to permit continuous and vigorous growth.

5. Installation of all plant material shall be installed in a sound, workmanlike manner and according to accepted good planting and tree relocation procedures with the quality of plant materials as hereinafter described. All elements of landscaping shall be installed so as to meet all applicable ordinances and code requirements.

6. There shall be no chains or cables used directly on trees or palms, handle with 2" minimum width nylon straps or equal.

7. Contractor shall assure drainage and percolation of all planting pits. Prior to installation of plant material, contractor shall fill all tree pits with water before planting to assure that proper drainage and percolation is available. Correct if required to assure percolation. Contractor is responsible for replacement of all plants lost due to inadequate drainage conditions. Plant/tree material that has bark scraped off due to shipping, handling, and installation issues may be rejected upon inspection by the L.A.

8. Contractor to request inspection of project in writing. If all work is satisfactory and complete in accordance with conditions of contract documents, then the owner, its representative, and landscape architect shall declare the project substantially complete.

9. Substantial completion constitutes the beginning of guarantee period.

10. Contractor to replace rejected plant within two (2) weeks of notice.

11. Crown pruning of any trees or palms is generally not approved by the national arborist association standards. When it is approved, it must be done in writing.

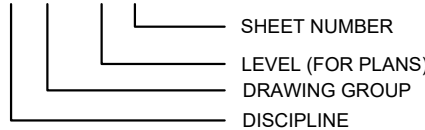
12. Xeriscaping principles as outlined in the South Florida Water Management District Xeriscape Plant Guide 2 shall be applied throughout landscape installation and maintenance.

DRAWING ORGANIZATION

1. DRAWING NUMBERING SYSTEM

THE DRAWING NUMBER FOR EACH SHEET CONSISTS OF THE FOLLOWING:

L1-11



2. DRAWING GROUP

LANDSCAPE DRAWINGS ARE ORGANIZED INTO THE FOLLOWING GROUPS:

- L0 = GENERAL
- L1 = PLANS
- L2 = ELEVATIONS
- L3 = SECTIONS
- L4 = ENLARGEMENTS
- L5 = DETAILS
- L6 = SCHEDULES

3. SHEET NUMBER

EACH DRAWING SHEET WITHIN EACH GROUP/MULTIPLE SHALL BE NUMBERED SEQUENTIALLY FROM 00 TO 99.

4. DRAWING NUMBER EXAMPLES:

L1-11 HARDSCAPE PLAN

ARQUITECTONICA

2900 Oak Avenue, Miami, FL 33133
T 305.372.1812 F 305.372.1175

ARQUITECTONICAGEO

2900 Oak Avenue, Miami, FL 33133
T 305.372.1812 F 305.372.1175

No copies, transmissions, reproductions, or electronic manipulation of any portion of these drawings in whole or in part are to be made without the express written permission of Arquitectonica International. All designs indicated in these drawings are property of Arquitectonica International. All copyrights reserved (c) 2019. The data included in this study is conceptual in nature and will continue to be modified throughout the course of the projects development with the eventual integration of structural, MEP and life safety systems. As these are further refined, the numbers will be adjusted accordingly.

FINAL SUBMITTAL DRB
7145 CARLYLE AVE,
7144 BYRON AVE,
MIAMI BEACH, FL 33141

72ND & PARK -
LANDSCAPE NOTES

DATE:
07/08/2019

L0-001

CITY OF MIAMI BEACH

LANDSCAPE LEGEND

INFORMATION REQUIRED TO BE PERMANENTLY AFFIXED TO PLANS

Zoning District	TC-3(c)	Lot Area	43440	Acres	1.00	REQUIRED/ ALLOWED	PROVIDED
-----------------	---------	----------	-------	-------	------	----------------------	----------

OPEN SPACE

A. Square feet of required Open Space as indicated on site plan:		
Lot Area= 43440 s.f. x 0 %= 0 s.f.	0	0
B. Square feet of parking lot open space required as indicated on site plan:		
Number of parking spaces 7 x 10 s.f. parking space=	70	
C. Total square feet of landscaped open space required: A+B=	70	70

LAWN AREA CALCULATION

A. Square feet of landscaped open space required		
B. Maximum lawn area (sod) permitted = 20 % x 70 s.f.	14	0

TREES

A. Number of trees required per lot or net lot acre, less existing number of trees meeting minimum requirements=		
22 trees x 1.00 net lot acres - number of existing trees=	22	22
B. % Natives required: Number of trees provided x 30%=	7	22
C. % Low maintenance/drought and salt tolerant required:		
Number of trees provided x 50%=	11	22
D. Street Trees (maximum average spacing of 20' o.c)		
595 linear feet along street divided by 20'=	30	30
E. Street tree species allowed directly beneath power lines: (maximum average spacing of 20' o.c.)=	0	0

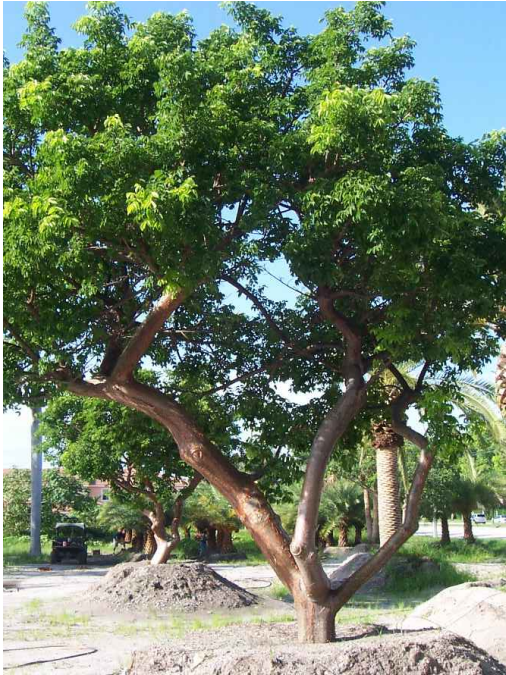
SHRUBS

A. Number of shrubs required: Sum of lot and street trees required x 12=	620	620
B. % Native shrubs required: Number of shrubs provided x 50%=	310	620

LARGE SHRUBS OR SMALL TREES

A. Number of large shrubs or small trees required: Number of required shrubs x 10%=	62	62
B. % Native large shrubs or small trees required: Number of large shrubs or small trees provided x 50%=	31	62

TREES



BURSERIA SIMARUBA
GUMBO LIMBO



CLUSIA ROSEA
AUTOGRAPH TREE



COCCOLOBA UVIFERA
SEAGRAPE



CONOCARPUS ERECTUS
GREEN BUTTONWOOD



KRUGIODENDRON FERREUM
BLACK IRONWOOD



PISCIDIA PISCIPULA
JAMAICA DOGWOOD



QUERCUS VIRGINIANA 'CATHEDRAL'
CATHEDRAL LIVE OAK



SIMAROUBA GLAUCA
PARADISE TREE

TREES/SHRUBS



ARDISIA ESCALLONIOIDES
MARLBERRY



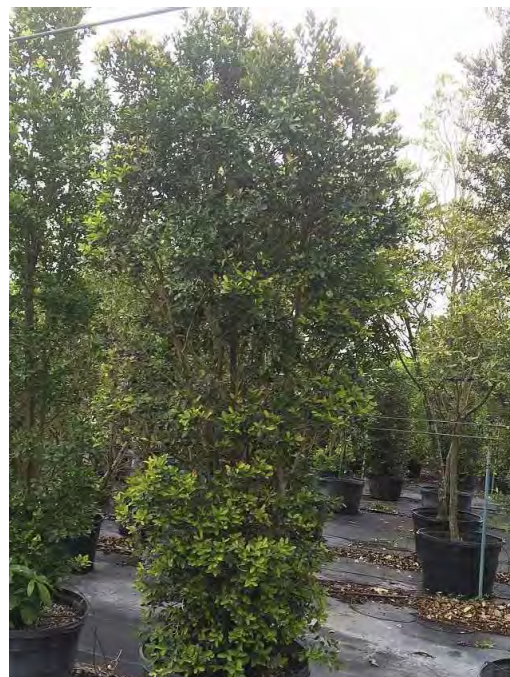
CAPPARIS CYNOPHALLOPHORA
JAMAICAN CAPER



CHRYSOBALANUS ICACO
VAR ICACAO
COCOPLUM



CONOCARPUS ERECTUS
VAR SERICEUS
SILVER BUTTONWOOD



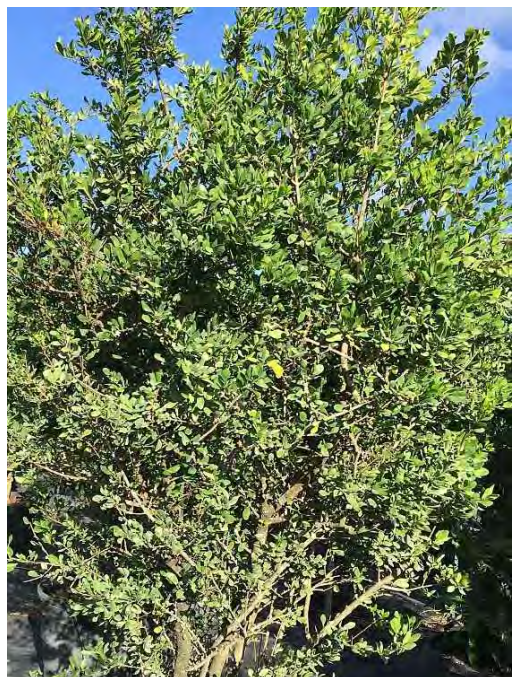
EUGENIA FOETIDA
SPANISH STOPPER



GYMNANTHES LUCIDA
CRABWOOD



PSYCHOTRIA NERVOSA
SHINY-LEAF WILD COFFEE



RANDIA ACULEATA
WHITE INDIGO BERRY

SHRUBS



ACROSTICHUM DANAEIFOLIUM
LEATHER FERN



BACCAHRIS ANGUSTIFOLIA
NARROW-LEAF SALT BUSH



CHRYSOBALANUS ICACO
CV. HORIZONTALIS
COASTAL COCOPLUM



COCCOTHRINAX ARGENTATA
SILVER PALM



LYCIUM CAROLINIANUM
CHRISTMAS BERRY



ARGUSIA GNAPHALLOIDES
SEA LAVENDER



PSYCHOTRIA LIGUSTRIFOLIA
BAHAMA COFFEE



SERENOA REPENS
SAW PALMETTO



SERENOA REPENS CINEREA
SILVER SAW PALMETTO



SOPHORA TOMENTOSA
VAR TRUNCATA
NECKLACE POD



SURIANA MARITIMA
BAY CEDAR

GROUNDCOVERS/LOW GROWING PLANTS



BORRICHIA FRUTESCENS
SEA OX-EYE DAISY



ERNODIA LITTORALIS
VAR LITTORALIS
BEACH GOLDEN CREEPER



HELIANTHUS DEBILIS
EAST COAST BEACH SUNFLOWER



HYMENOCALLIS LATIFOLIA
SPIDER LILY



IPOMEA PRES-CAPRAE
RAILROAD VINE



MUHLENBERGIA CAPILLARIS
MUHLY GRASS



PEPEROMIA OBTUSIFOLIA
BABY RUBBER PLANT



SPARTINA SPARTINAE
GULF CORDGRASS



SPARTINA PATENS
SALTMEADOW CORDGRASS



THELYPTERIS KUNTHII
SOUTHERN SHIELD FERN



ZAMIA PUMILA
COONTIE

ARQUITECTONICA

2900 Oak Avenue, Miami, FL 33133
T 305.372.1812 F 305.372.1175

ARQUITECTONICAGEO

2900 Oak Avenue, Miami, FL 33133
T 305.372.1812 F 305.372.1175

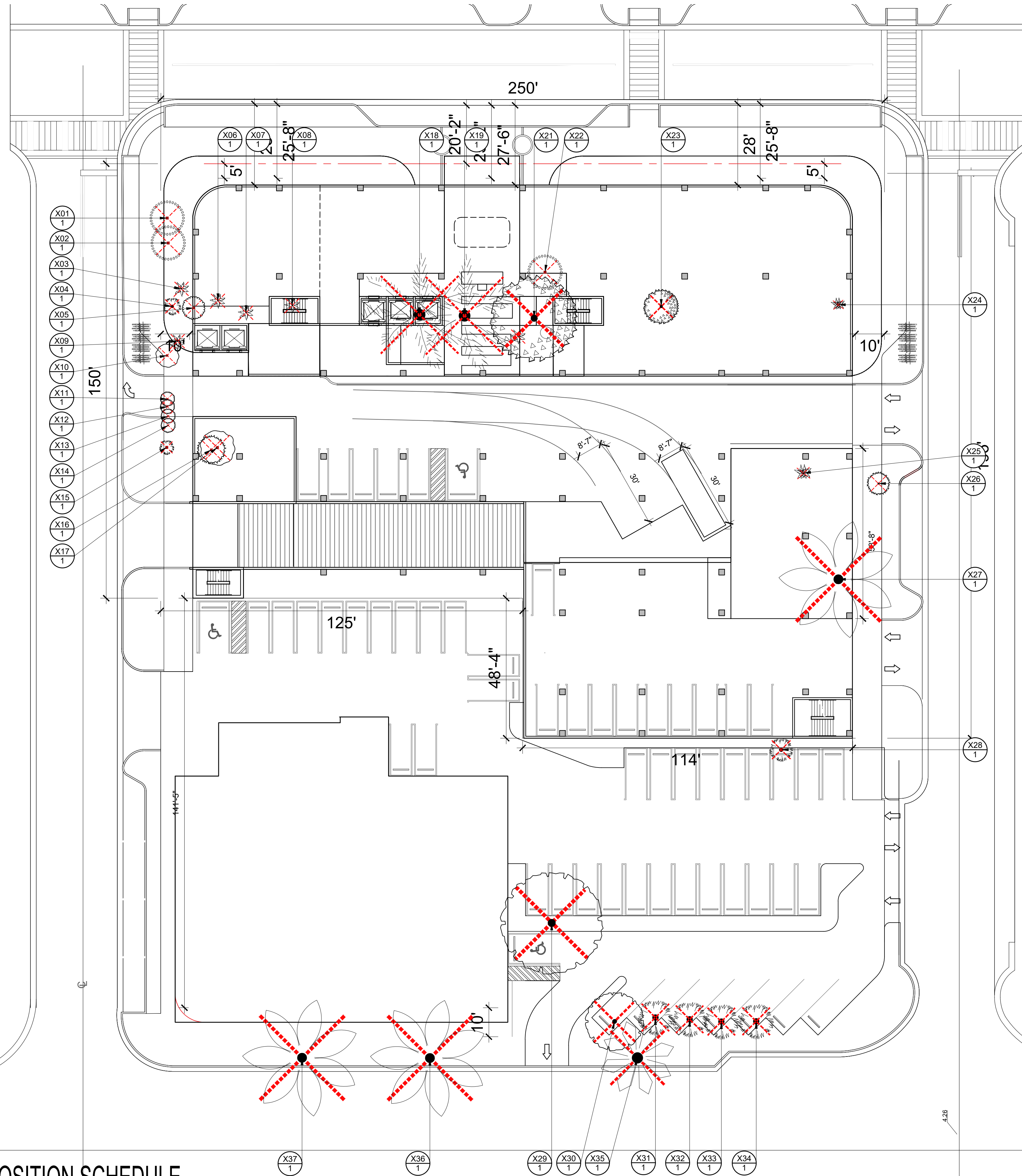
No copies, transmissions, reproductions, or electronic manipulation of any portion of these drawings in whole or in part are to be made without the express written permission of Arquitectonica International. All designs indicated in these drawings are property of Arquitectonica International. All copyrights reserved (c) 2019. The data included in this study is conceptual in nature and will continue to be modified throughout the course of the projects development with the eventual integration of structural, MEP and life safety systems. As these are further refined, the numbers will be adjusted accordingly.

FINAL SUBMITTAL DRB
7145 CARLYLE AVE,
7144 BYRON AVE,
MIAMI BEACH, FL 33141

72ND & PARK -
PLANT PALLETE

DATE:
07/08/2019

L0-003



NOTE: REFER TO SHEET L6-000 FOR TREE DISPOSITION SCHEDULE

ARQUITECTONICA

2900 Oak Avenue, Miami, FL 33133
T 305.372.1812 F 305.372.1175

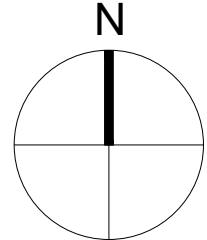
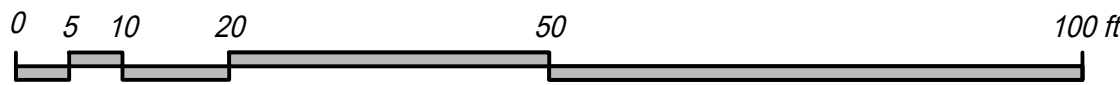
ARQUITECTONICAGEO

2900 Oak Avenue, Miami, FL 33133
T 305.372.1812 F 305.372.1175

No copies, transmissions, reproductions, or electronic manipulation of any portion of these drawings in whole or in part are to be made without the express written permission of Arquitectonica International. All designs indicated in these drawings are property of Arquitectonica International. All copyrights reserved (c) 2019. The data included in this study is conceptual in nature and will continue to be modified throughout the course of the projects development with the eventual integration of structural, MEP and life safety systems. As these are further refined, the numbers will be adjusted accordingly.

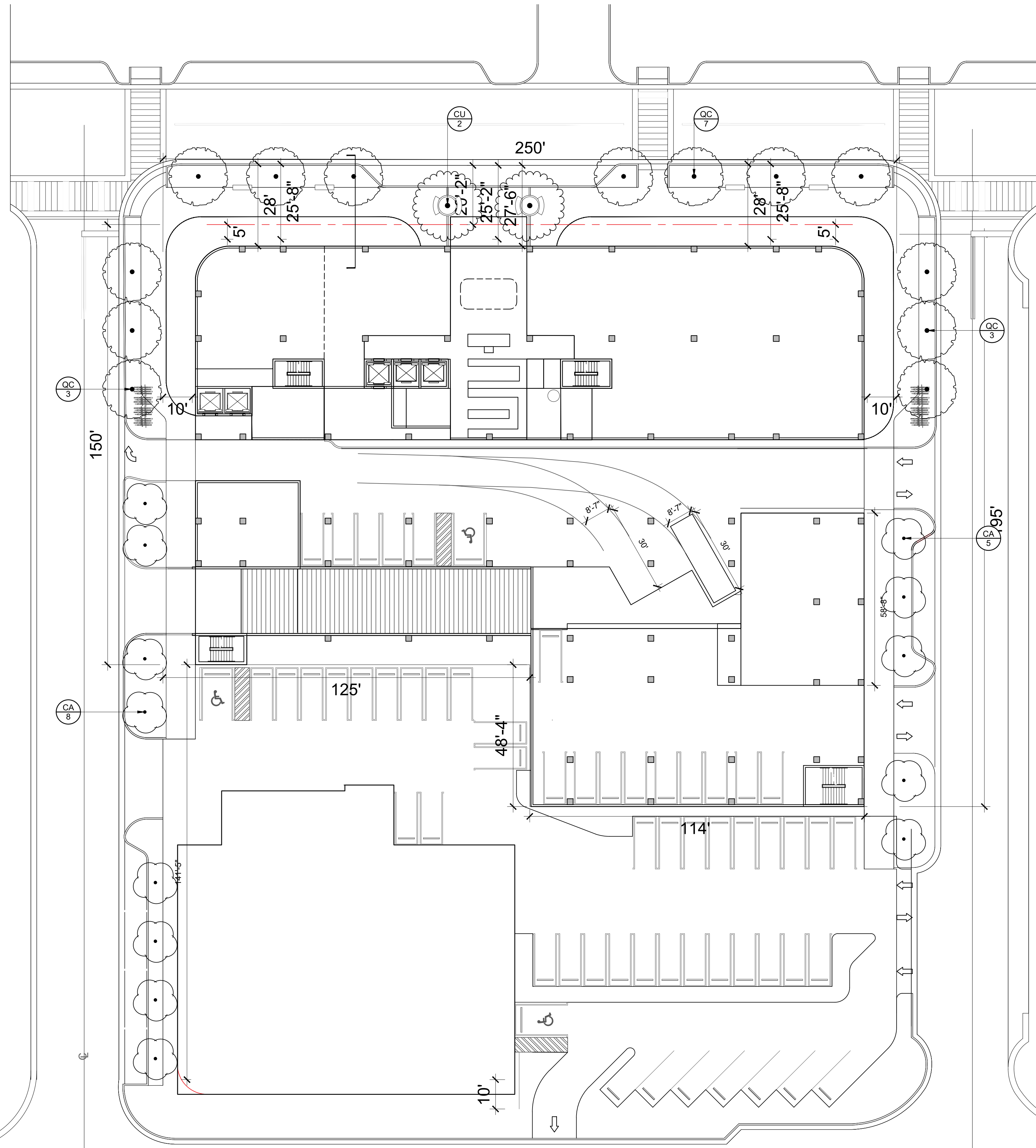
FINAL SUBMITTAL DRB
7145 CARLYLE AVE,
7144 BYRON AVE,
MIAMI BEACH, FL 33141

72ND & PARK -
TREE DISPOSITION
PLAN



DATE:
07/08/2019

L1-000



NOTE: REFER TO SHEET L6-001 FOR TREE MITIGATION SCHEDULES

ARQUITECTONICA

2900 Oak Avenue, Miami, FL 33133
T 305.372.1812 F 305.372.1175

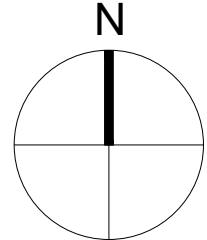
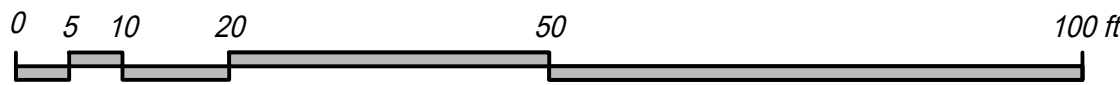
ARQUITECTONICAGEO

2900 Oak Avenue, Miami, FL 33133
T 305.372.1812 F 305.372.1175

No copies, transmissions, reproductions, or electronic manipulation of any portion of these drawings in whole or in part are to be made without the express written permission of Arquitectonica International. All designs indicated in these drawings are property of Arquitectonica International. All copyrights reserved (c) 2019. The data included in this study is conceptual in nature and will continue to be modified throughout the course of the projects development with the eventual integration of structural, MEP and life safety systems. As these are further refined, the numbers will be adjusted accordingly.

FINAL SUBMITTAL DRB
7145 CARLYLE AVE,
7144 BYRON AVE,
MIAMI BEACH, FL 33141

72ND & PARK -
TREE MITIGATION PLAN



DATE:
07/08/2019

L1-001



ARQUITECTONICA

2900 Oak Avenue, Miami, FL 33133
T 305.372.1812 F 305.372.1175

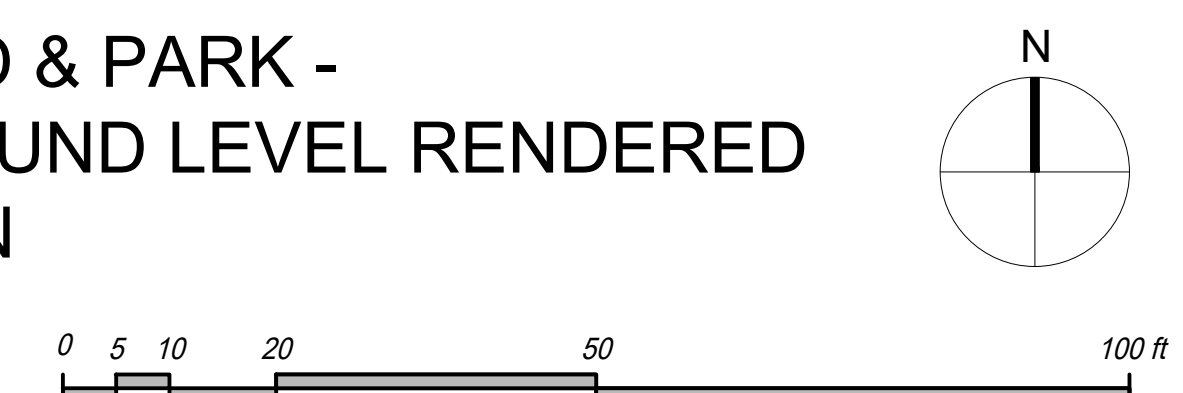
ARQUITECTONICAGEO

2900 Oak Avenue, Miami, FL 33133
T 305.372.1812 F 305.372.1175

No copies, transmissions, reproductions, or electronic manipulation of any portion of these drawings in whole or in part are to be made without the express written permission of Arquitectonica International. All designs indicated in these drawings are property of Arquitectonica International. All copyrights reserved (c) 2019. The data included in this study is conceptual in nature and will continue to be modified throughout the course of the projects development with the eventual integration of structural, MEP and life safety systems. As these are further refined, the numbers will be adjusted accordingly.

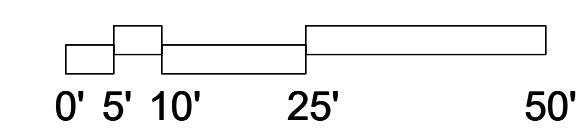
FINAL SUBMITTAL DRB
7145 CARLYLE AVE,
7144 BYRON AVE,
MIAMI BEACH, FL 33141

72ND & PARK -
GROUND LEVEL RENDERED
PLAN

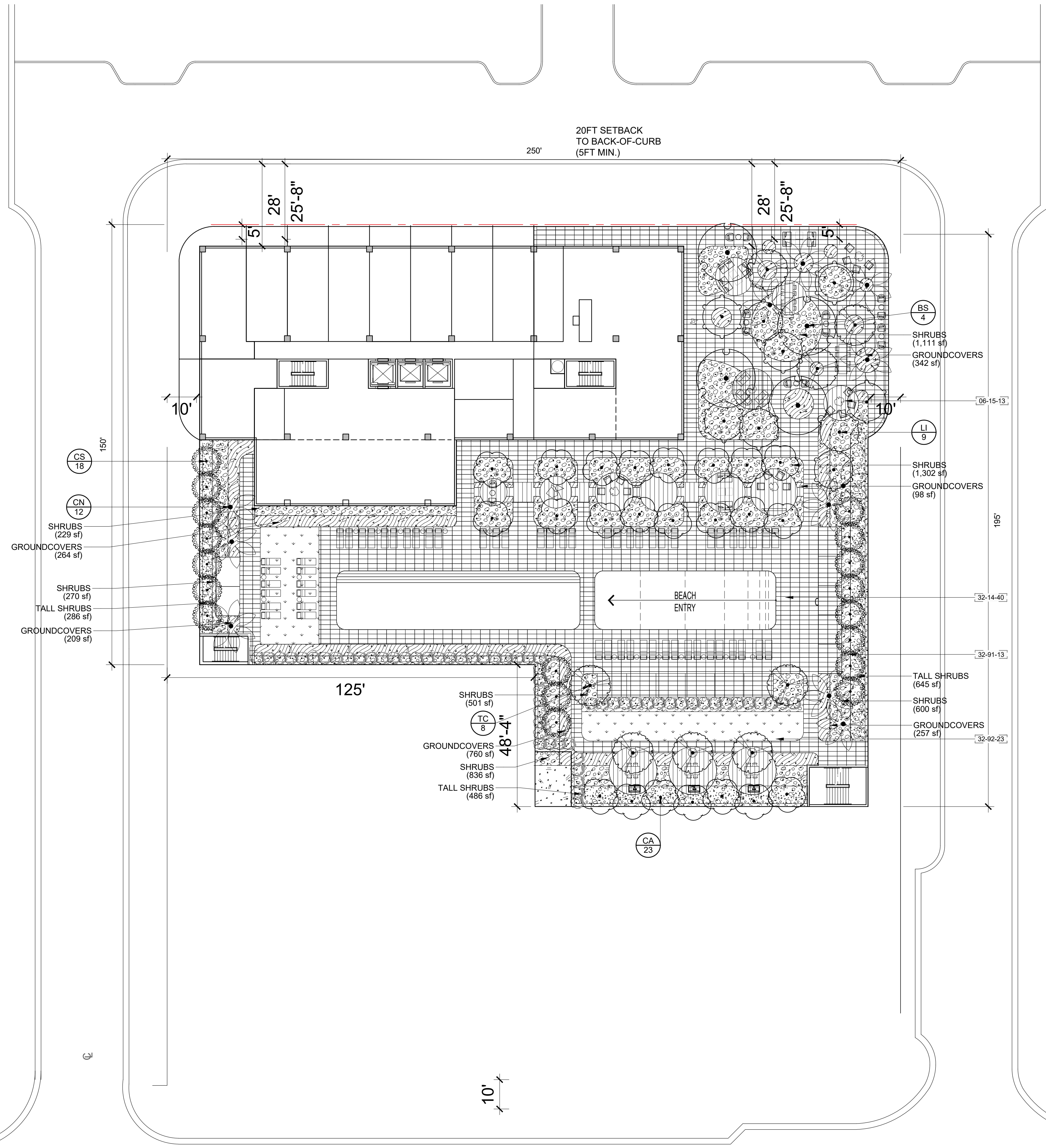


DATE:
07/08/2019

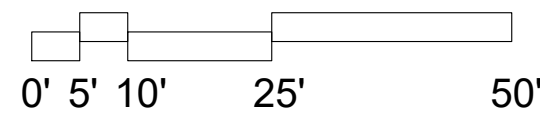
L1-100



L1-110



NOTE: REFER TO SHEET L6-200 FOR PODIUM LEVEL LANDSCAPE SCHEDULES



ARQUITECTONICA

2900 Oak Avenue, Miami, FL 33133
T 305.372.1812 F 305.372.1175

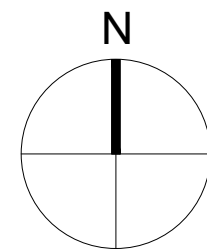
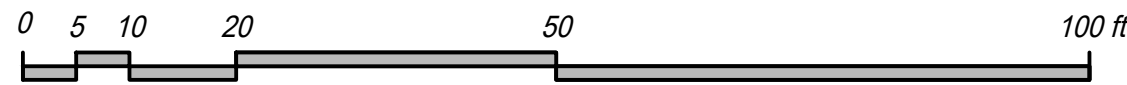
ARQUITECTONICAGEO

2900 Oak Avenue, Miami, FL 33133
T 305.372.1812 F 305.372.1175

No copies, transmissions, reproductions, or electronic manipulation of any portion of these drawings in whole or in part are to be made without the express written permission of Arquitectonica International. All designs indicated in these drawings are property of Arquitectonica International. All copyrights reserved (c) 2019. The data included in this study is conceptual in nature and will continue to be modified throughout the course of the projects development with the eventual integration of structural, MEP and life safety systems. As these are further refined, the numbers will be adjusted accordingly.

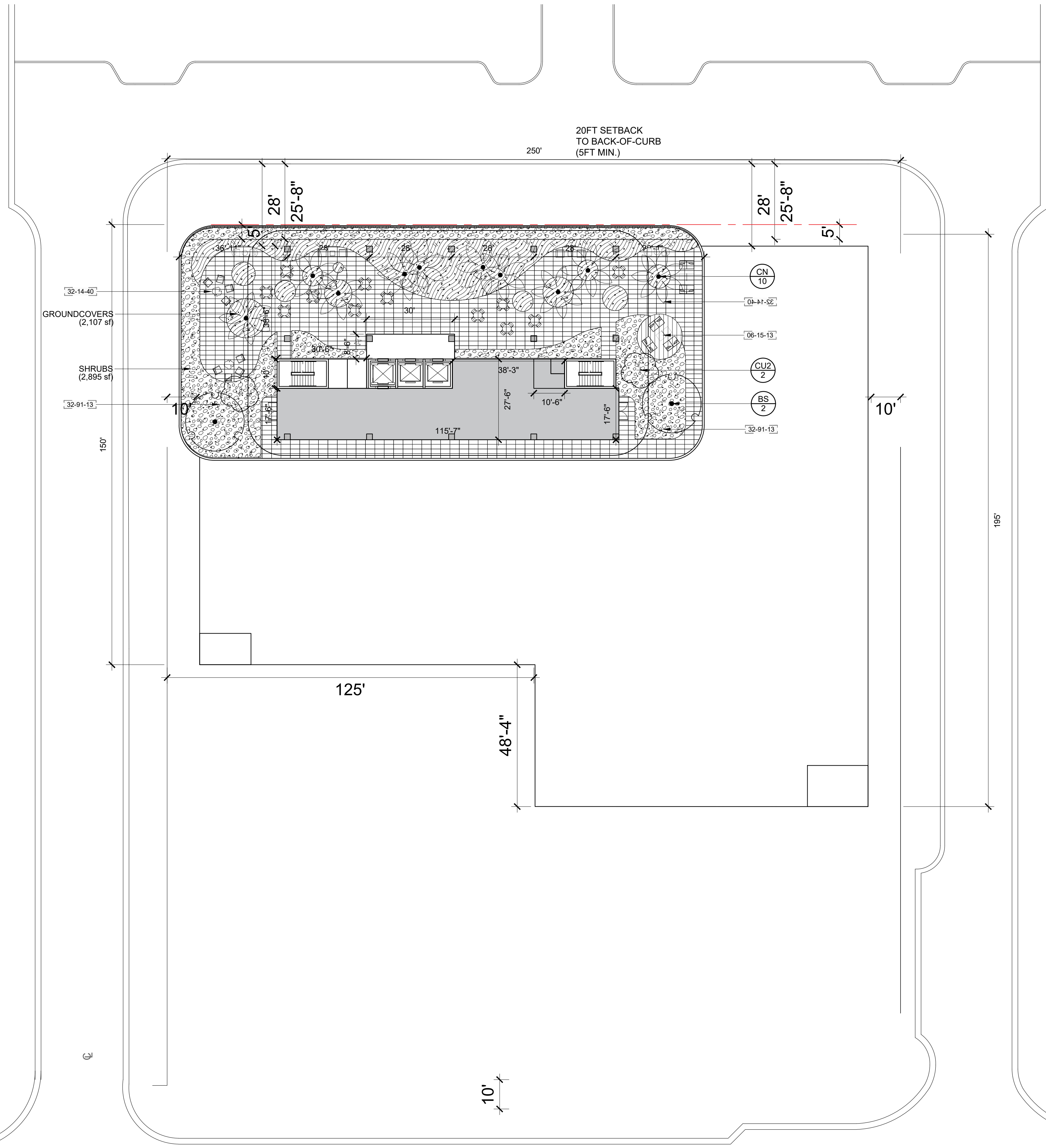
FINAL SUBMITTAL DRB
7145 CARLYLE AVE,
7144 BYRON AVE,
MIAMI BEACH, FL 33141

72ND & PARK -
PODIUM LEVEL LANDSCAPE
PLAN

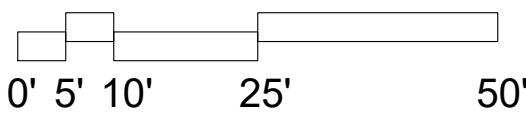


DATE:
07/08/2019

L1-210



NOTE: REFER TO SHEET L6-300 FOR ROOF LEVEL LANDSCAPE SCHEDULES



ARQUITECTONICA

2900 Oak Avenue, Miami, FL 33133
T 305.372.1812 F 305.372.1175

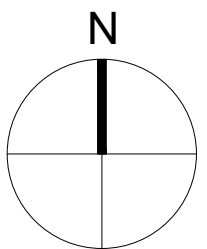
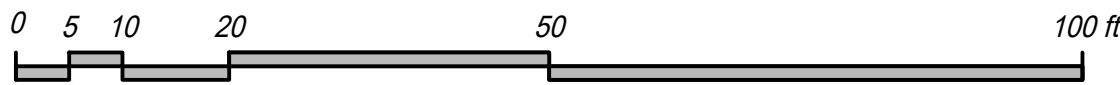
ARQUITECTONICAGEO

2900 Oak Avenue, Miami, FL 33133
T 305.372.1812 F 305.372.1175

No copies, transmissions, reproductions, or electronic manipulation of any portion of these drawings in whole or in part are to be made without the express written permission of Arquitectonica International. All designs indicated in these drawings are property of Arquitectonica International. All copyrights reserved (c) 2019. The data included in this study is conceptual in nature and will continue to be modified throughout the course of the projects development with the eventual integration of structural, MEP and life safety systems. As these are further refined, the numbers will be adjusted accordingly.

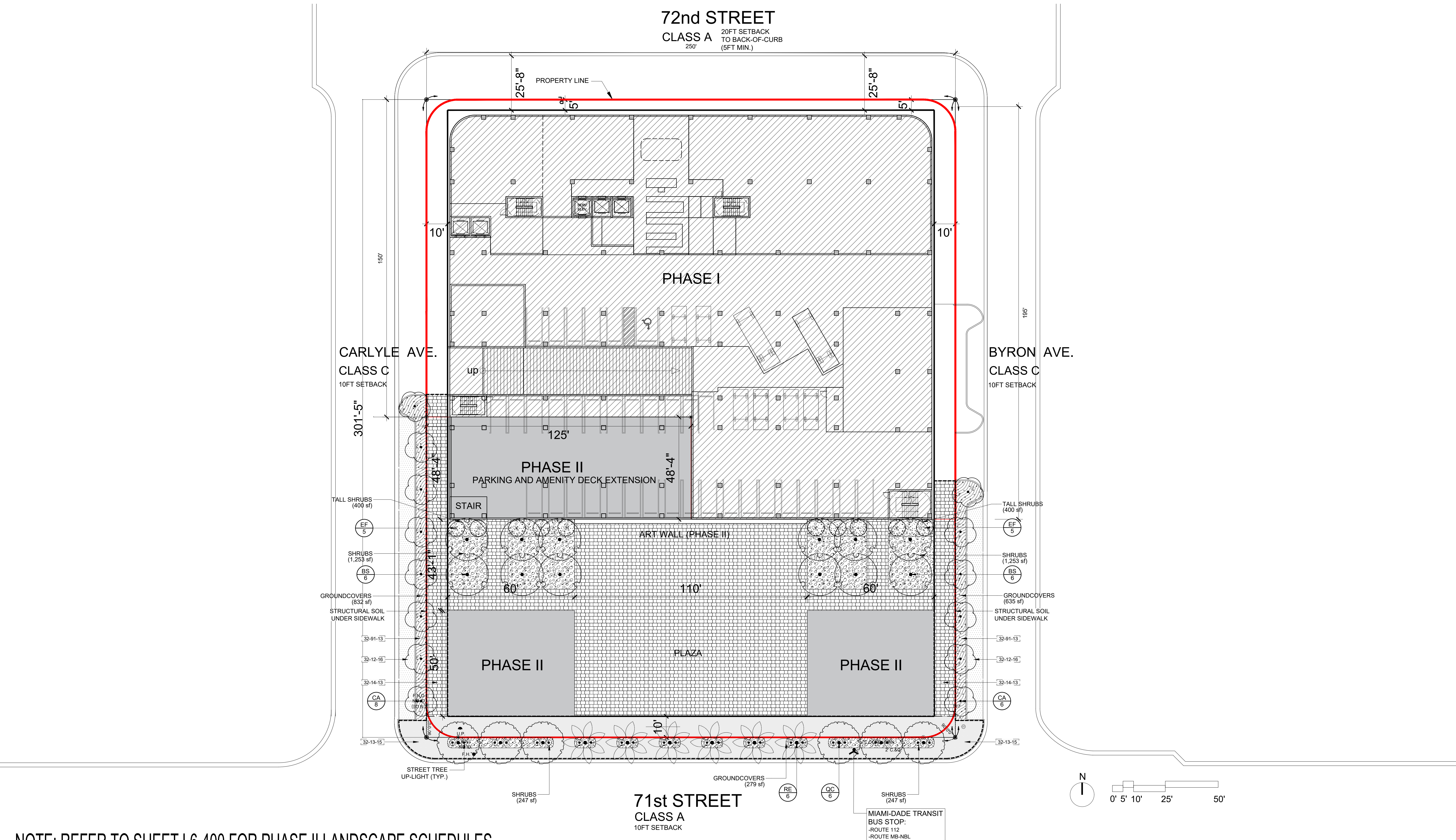
FINAL SUBMITTAL DRB
7145 CARLYLE AVE,
7144 BYRON AVE,
MIAMI BEACH, FL 33141

72ND & PARK -
ROOF LEVEL LANDSCAPE
PLAN



DATE:
07/08/2019

L1-310



ARQUITECTONICA

2900 Oak Avenue, Miami, FL 33133
T 305.372.1812 F 305.372.1175

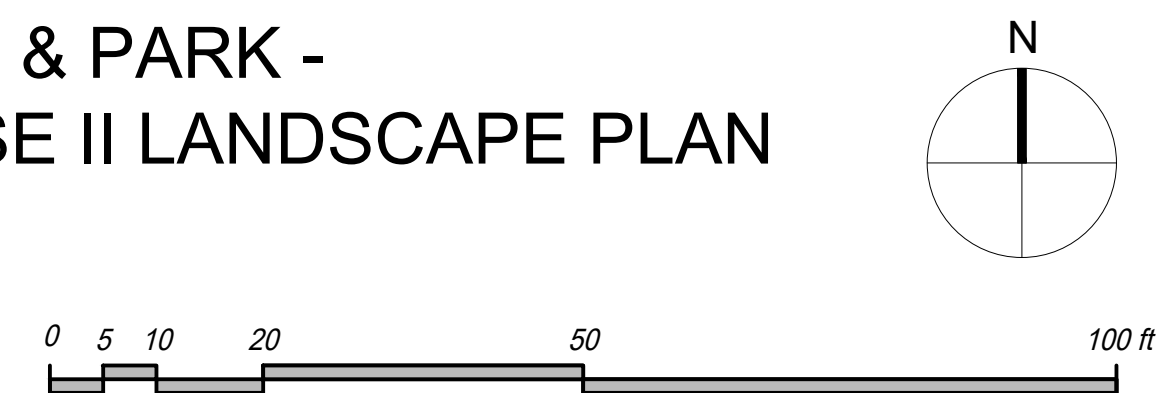
ARQUITECTONICAGEO

2900 Oak Avenue, Miami, FL 33133
T 305.372.1812 F 305.372.1175

No copies, transmissions, reproductions, or electronic manipulation of any portion of these drawings in whole or in part are to be made without the express written permission of Arquitectonica International. All designs indicated in these drawings are property of Arquitectonica International. All copyrights reserved (c) 2019. The data included in this study is conceptual in nature and will continue to be modified throughout the course of the projects development with the eventual integration of structural, MEP and life safety systems. As these are further refined, the numbers will be adjusted accordingly.

FINAL SUBMITTAL DRB
7145 CARLYLE AVE,
7144 BYRON AVE,
MIAMI BEACH, FL 33141

72ND & PARK -
PHASE II LANDSCAPE PLAN



DATE:
07/08/2019

L1-410