



**ARQUITECTONICA**

2900 Oak Avenue, Miami, FL 33133  
T 305.372.1812 F 305.372.1175

No copies, transmissions, reproductions, or electronic manipulation of any portion of these drawings in whole or in part are to be made without the express written permission of Arquitectonica International. All designs indicated in these drawings are property of Arquitectonica International. All copyrights reserved (c) 2019. The data included in this study is conceptual in nature and will continue to be modified throughout the course of the projects development with the eventual integration of structural, MEP and life safety systems. As these are further refined, the numbers will be adjusted accordingly.

FINAL SUBMITTAL DRB  
7145 CARLYLE AVE,  
7144 BYRON AVE,  
MIAMI BEACH, FL 33141

72ND & PARK -  
STREET ELEVATION - 72ND STREET

DATE:  
07/08/2019

**A2-08**



**ARQUITECTONICA**

2900 Oak Avenue, Miami, FL 33133  
T 305.372.1812 F 305.372.1175

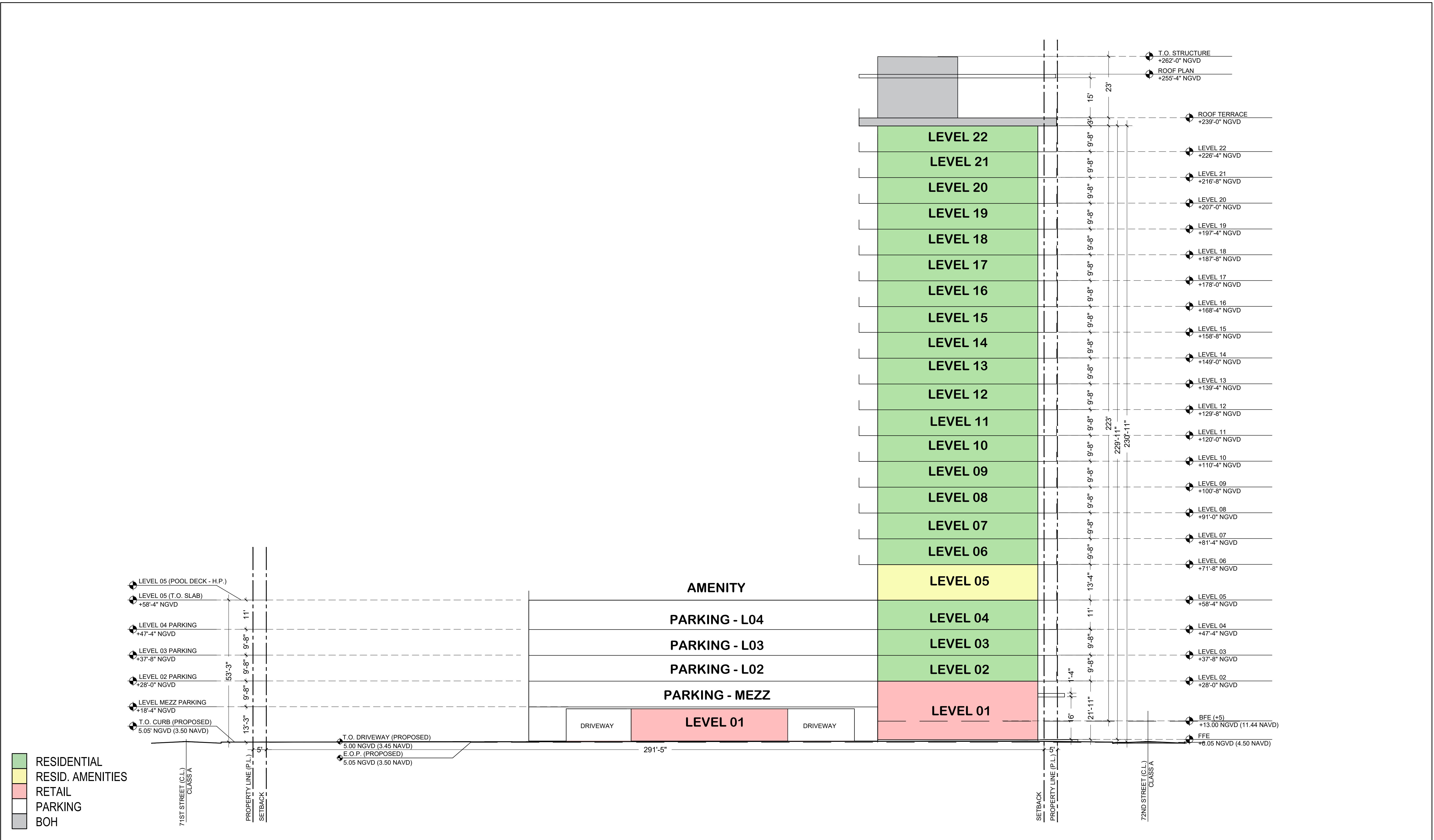
No copies, transmissions, reproductions, or electronic manipulation of any portion of these drawings in whole or in part are to be made without the express written permission of Arquitectonica International. All designs indicated in these drawings are property of Arquitectonica International. All copyrights reserved (c) 2019. The data included in this study is conceptual in nature and will continue to be modified throughout the course of the projects development with the eventual integration of structural, MEP and life safety systems. As these are further refined, the numbers will be adjusted accordingly.

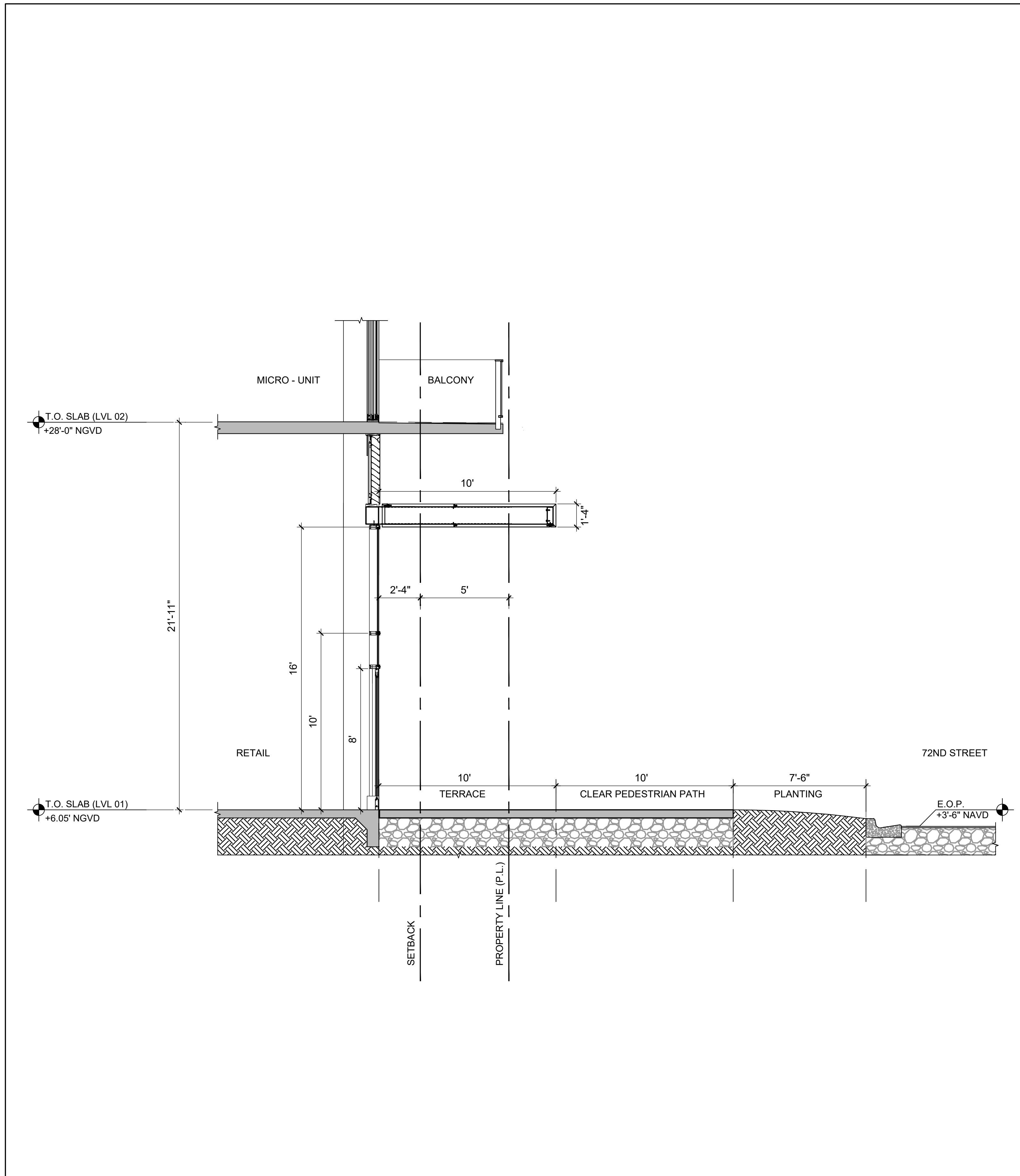
FINAL SUBMITTAL DRB  
7145 CARLYLE AVE,  
7144 BYRON AVE,  
MIAMI BEACH, FL 33141

72ND & PARK -  
STREET ELEVATION - 72ND STREET -  
RENDERED

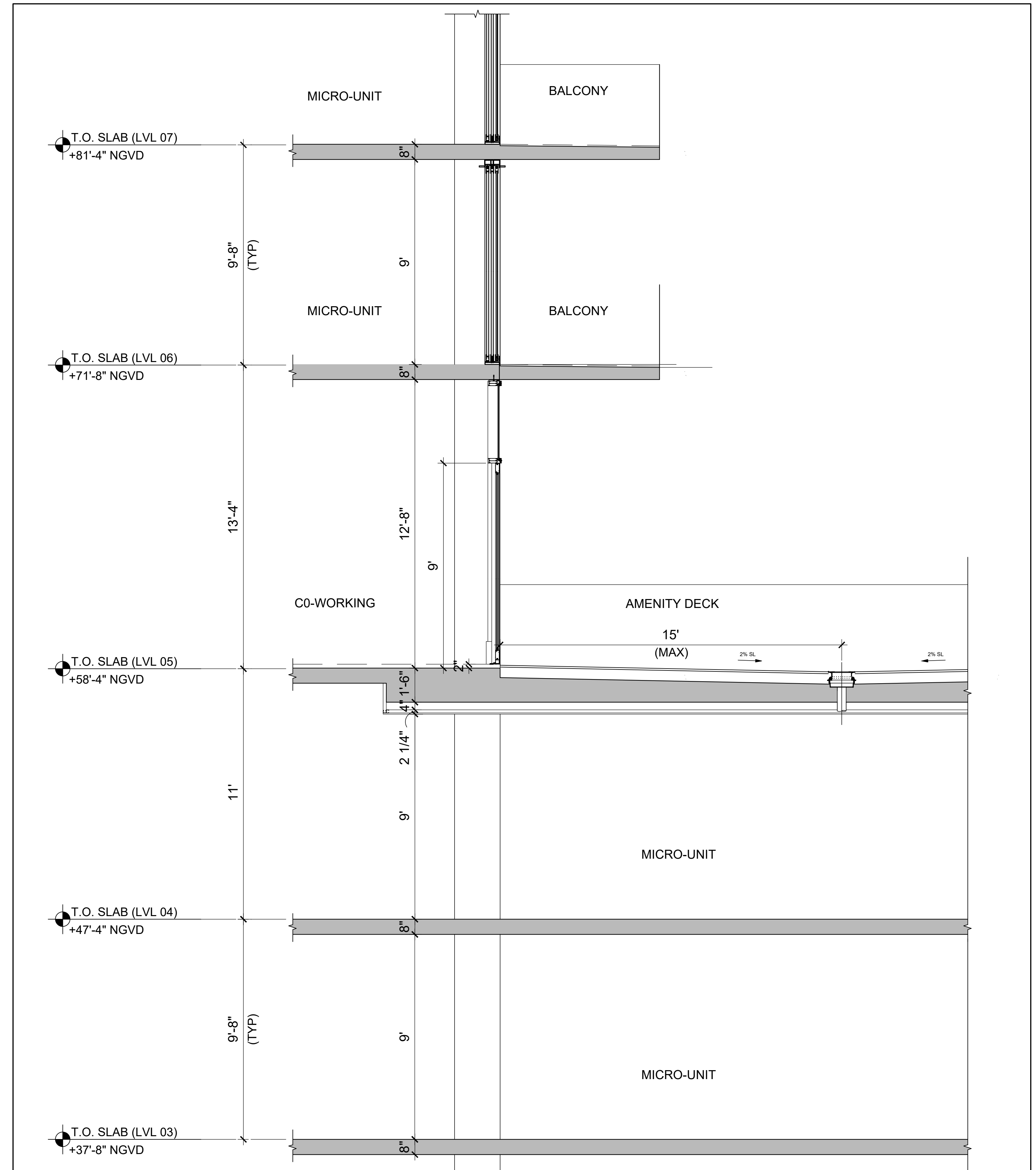
DATE:  
07/08/2019

**A2-09**

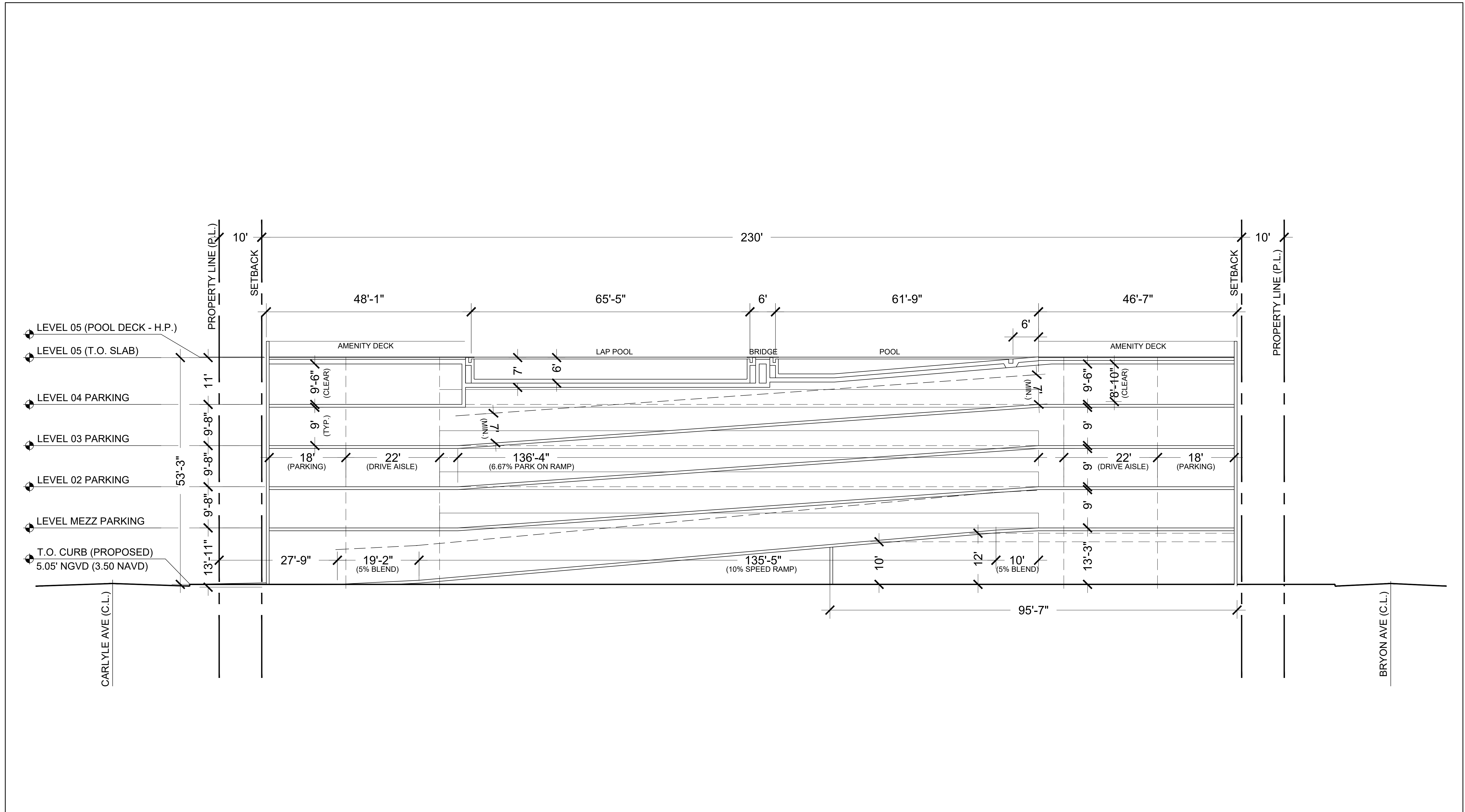




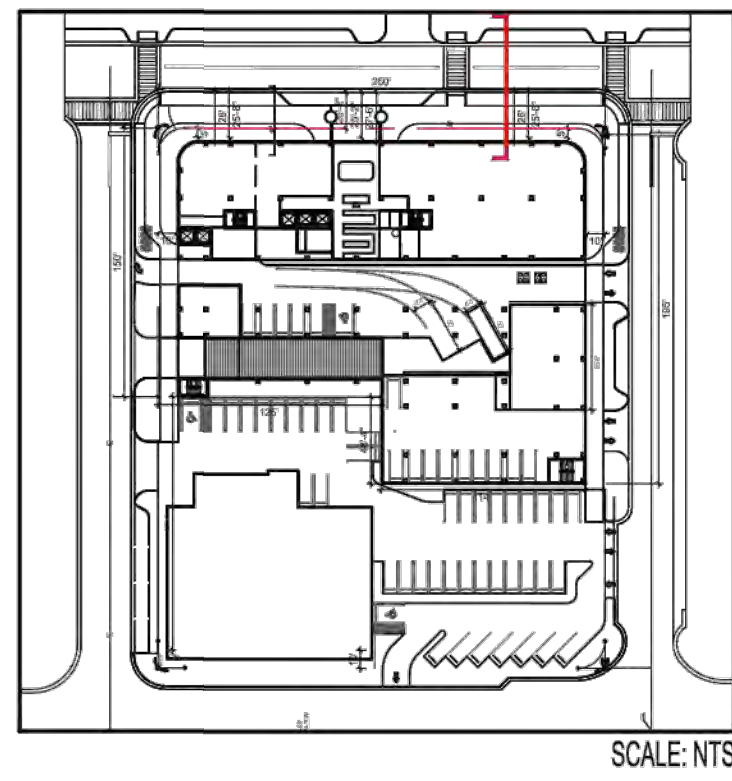
SECTION A - A



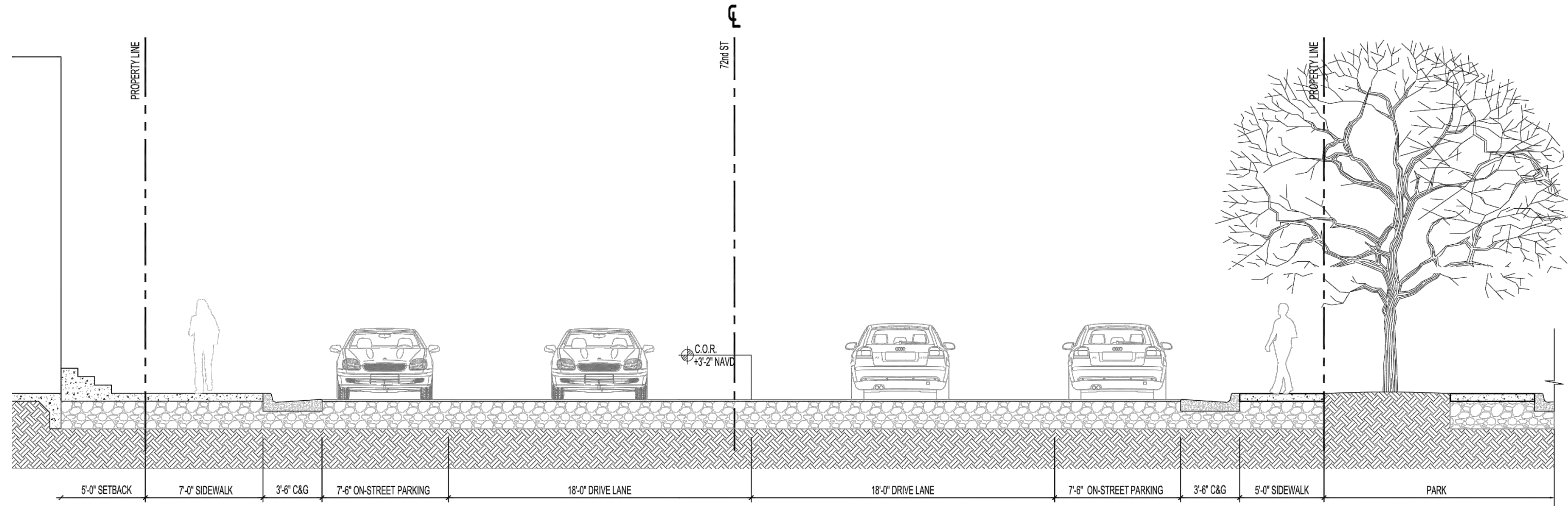
SECTION B - B



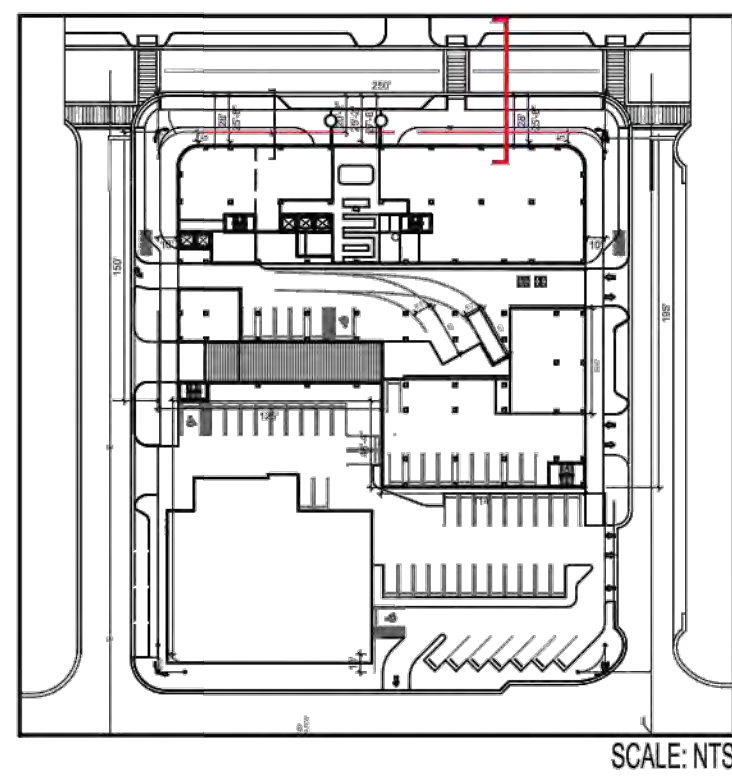
RAMP SECTION



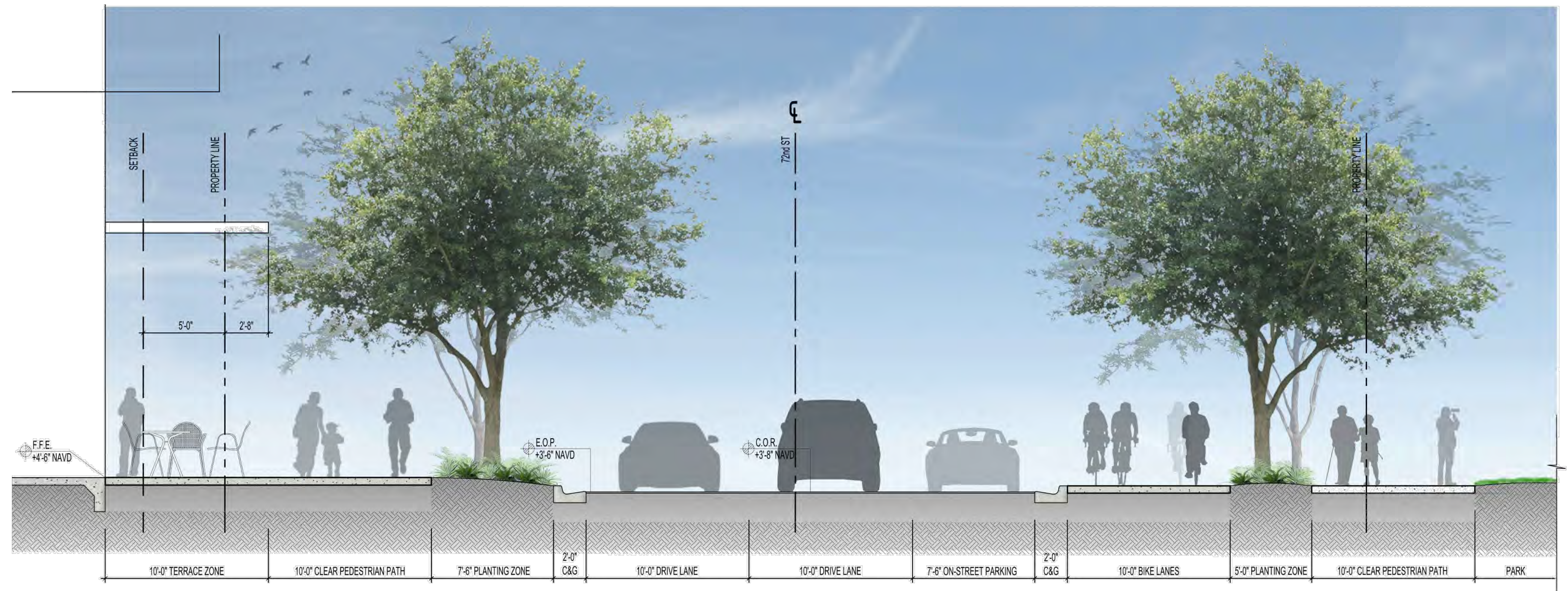
SCALE: NTS



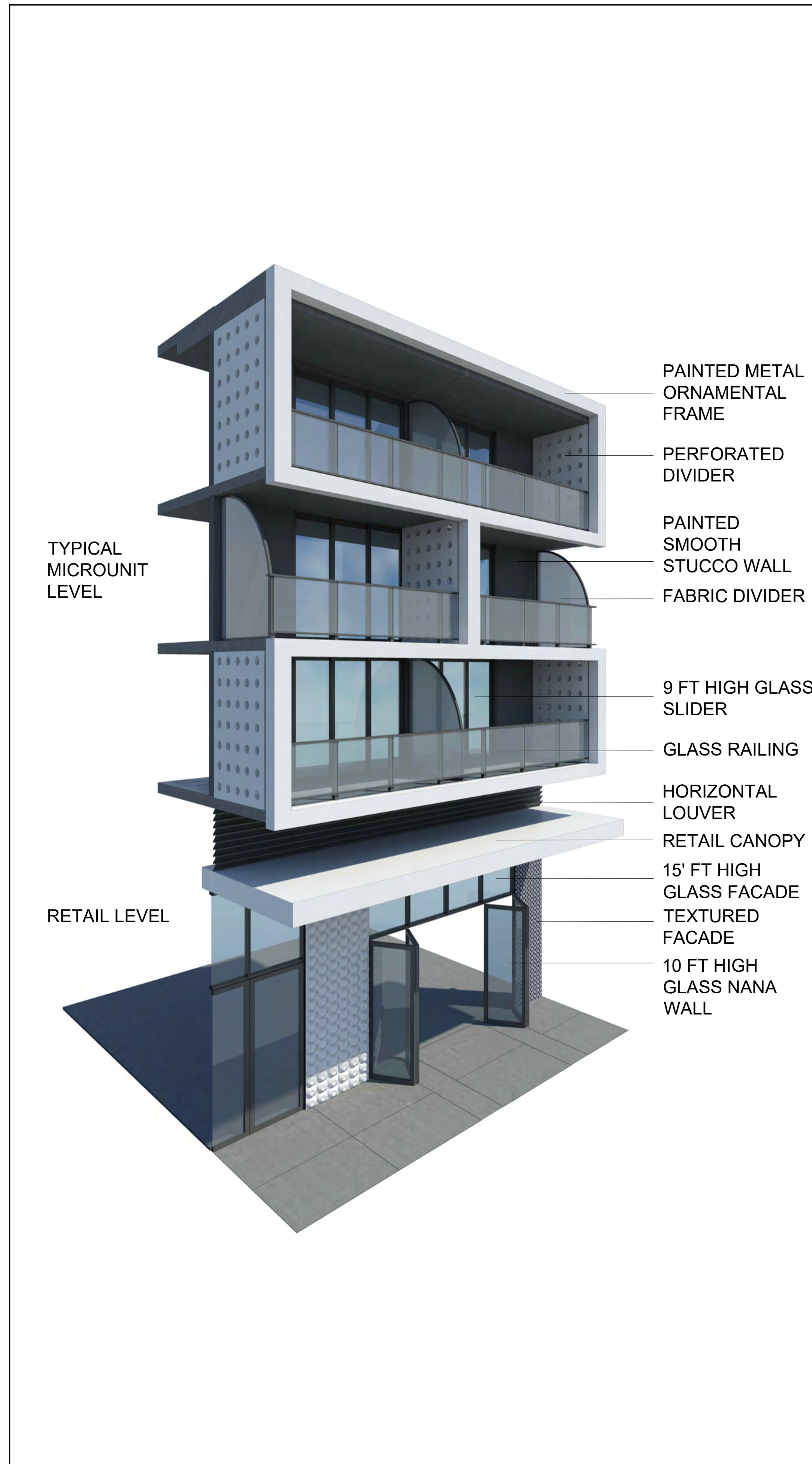
① 72nd STREET EXISTING SECTION  
SCALE: 1/4"=1'-0"



SCALE: NTS



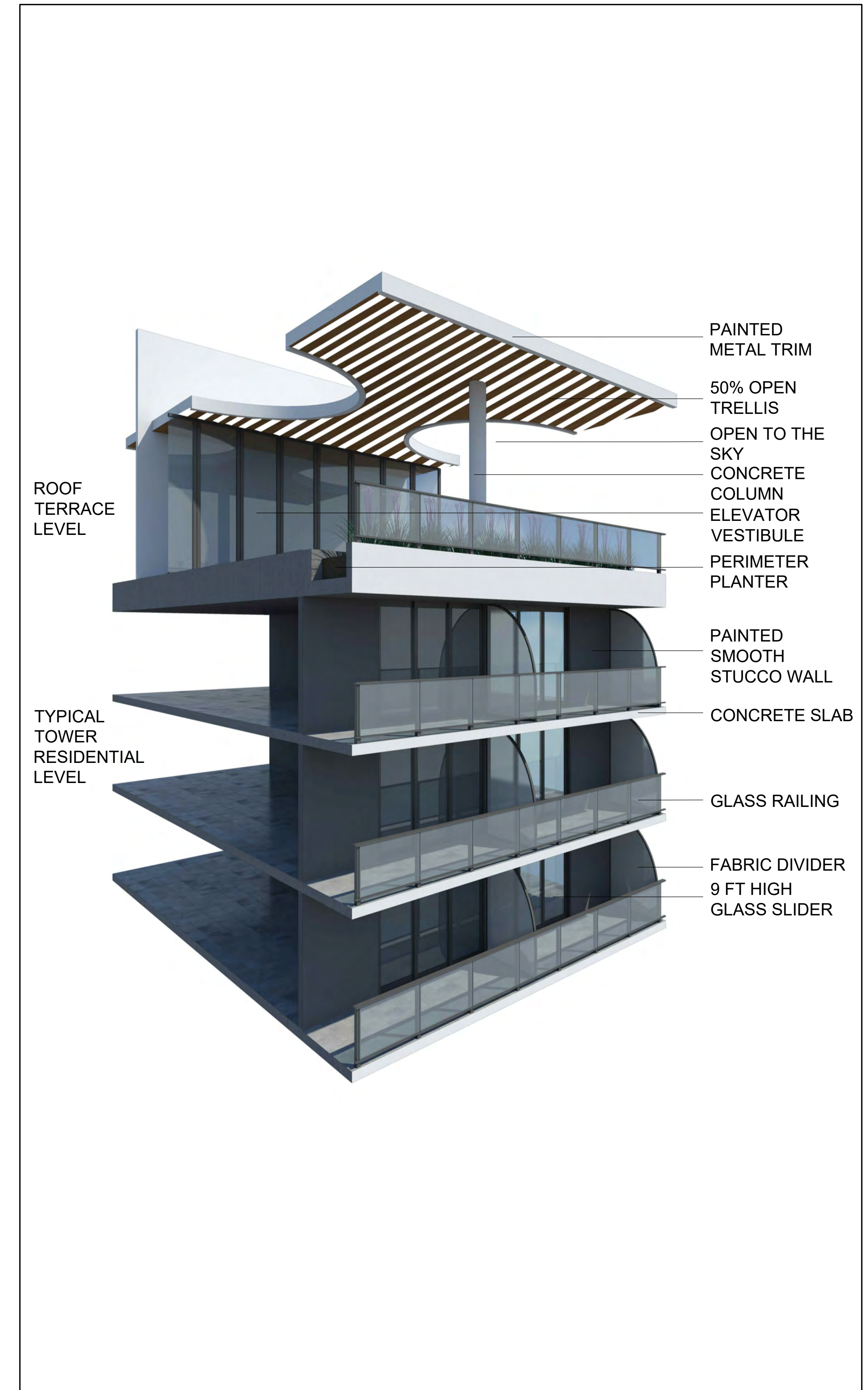
② 72nd STREET PROPOSED SECTION  
SCALE: 1/4"=1'-0"



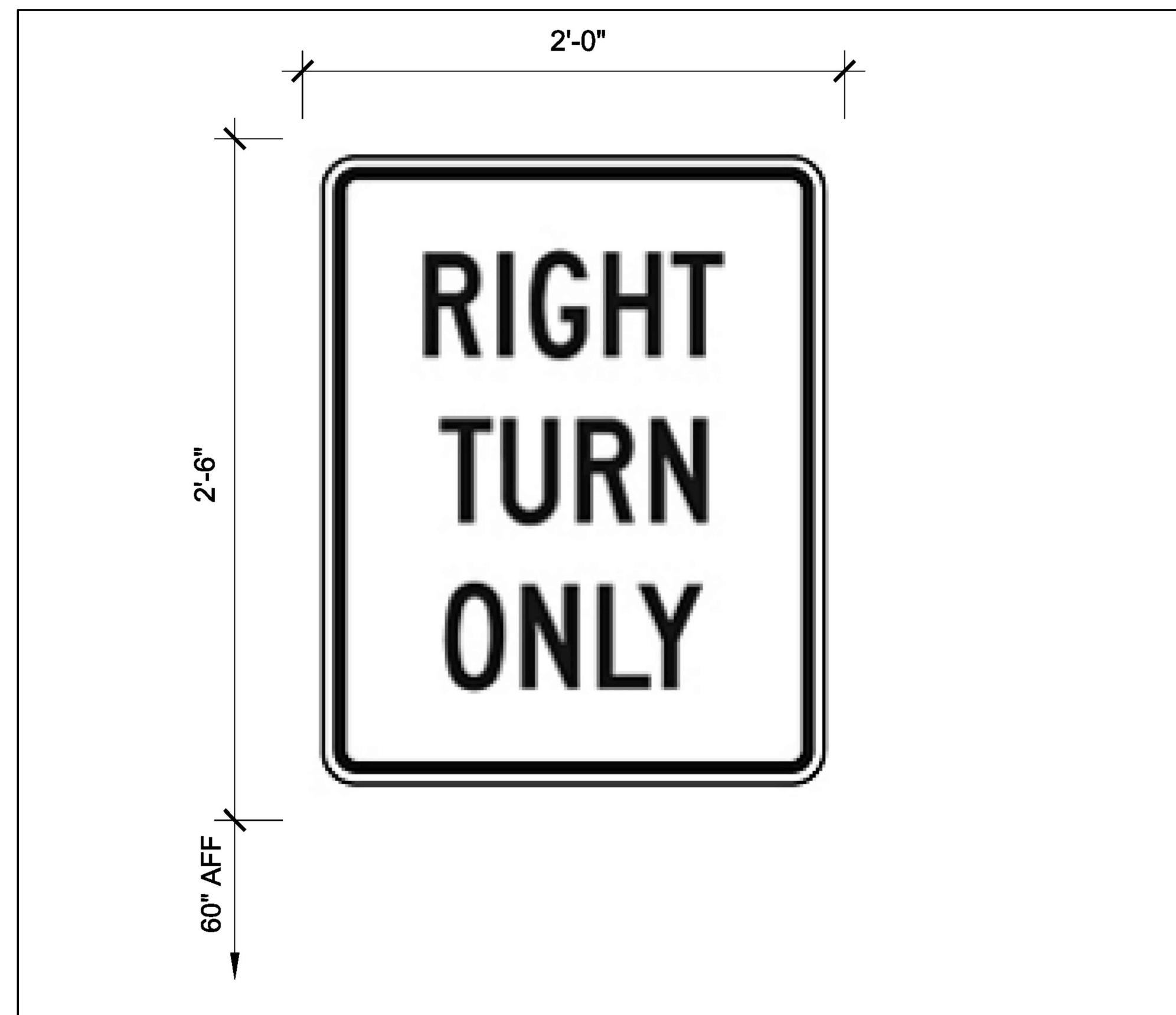
TYPICAL GROUND LEVEL - PODIUM LEVEL FACADE



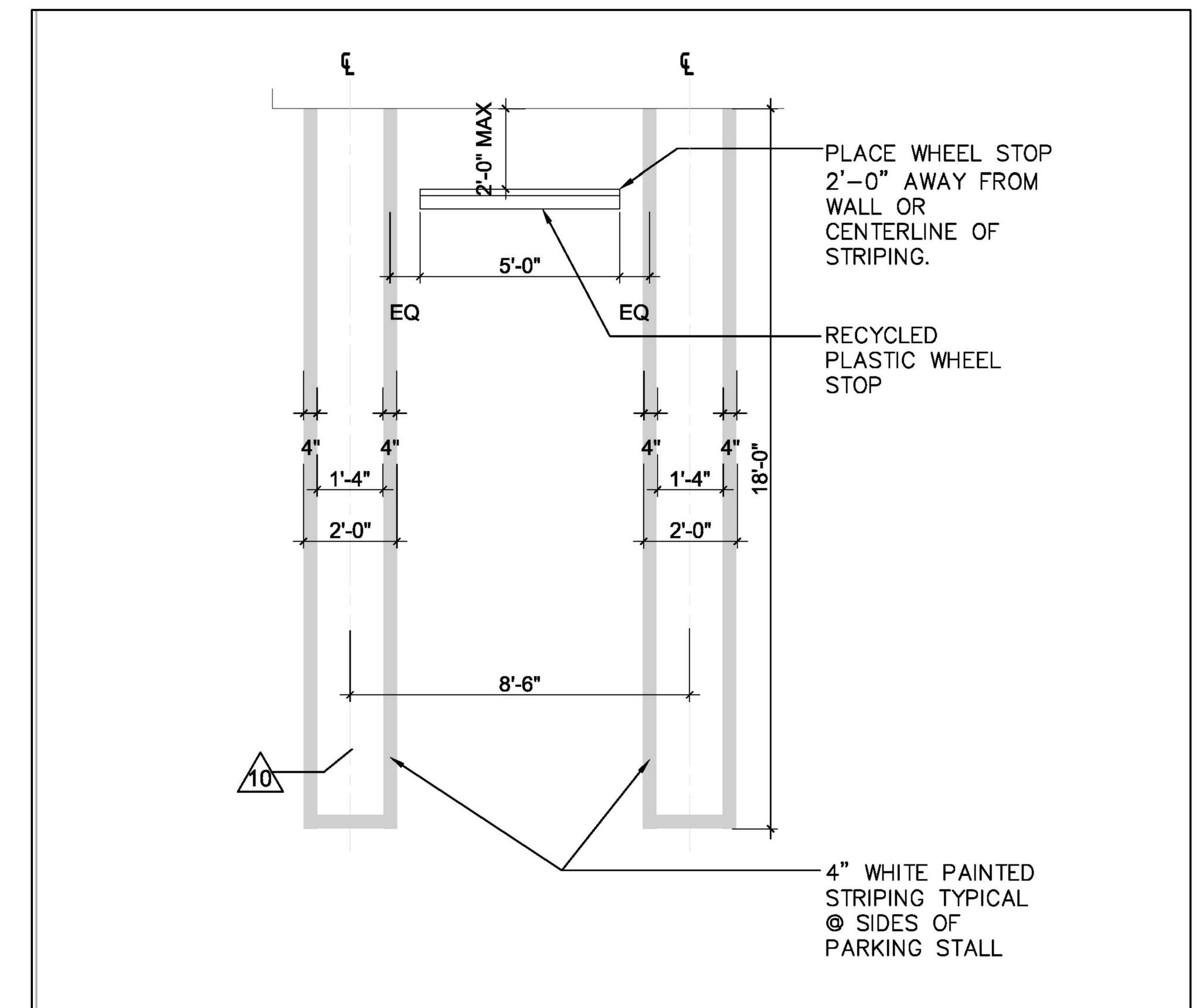
TYPICAL PODIUM LEVEL - AMENITY LEVEL FACADE



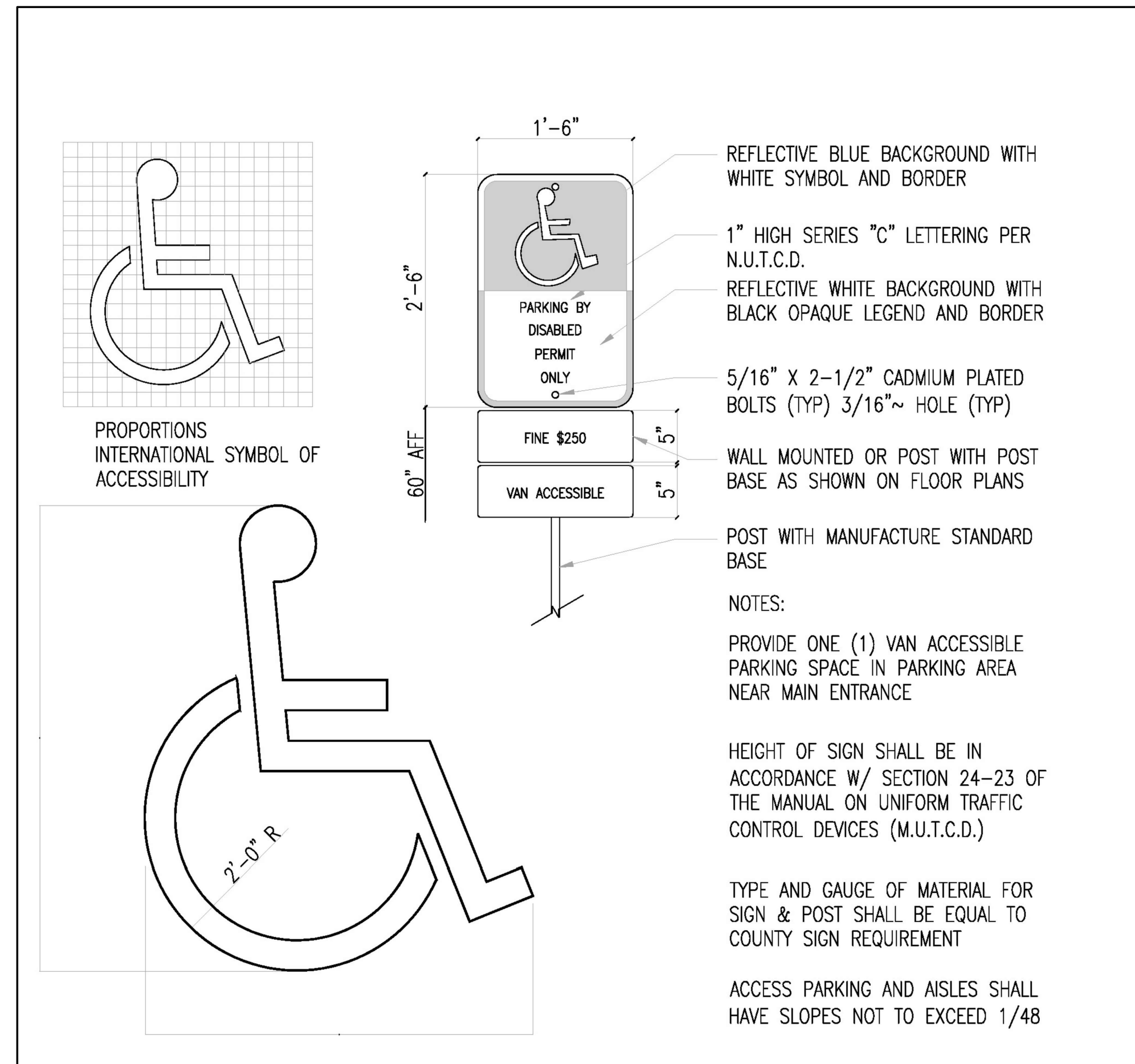
TYPICAL RESIDENTIAL LEVEL - ROOF TERRACE



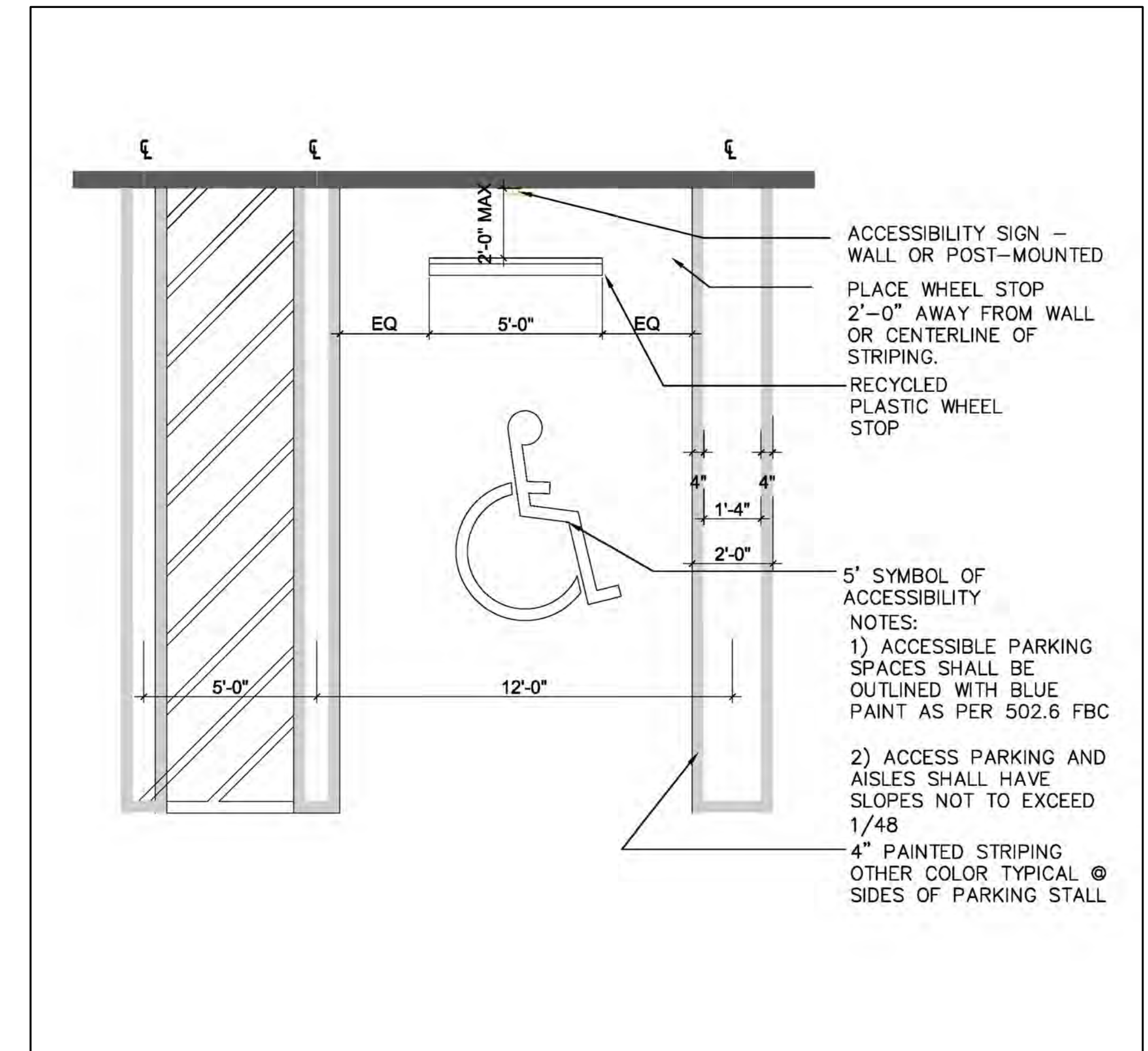
RIGHT TURN ONLY SIGNAGE



TYPICAL PARKING STALL



HC PARKING SIGNAGE



ACCESSIBLE PARKING STALL





**ARQUITECTONICA**

2900 Oak Avenue, Miami, FL 33133  
T 305.372.1812 F 305.372.1175

No copies, transmissions, reproductions, or electronic manipulation of any portion of these drawings in whole or in part are to be made without the express written permission of Arquitectonica International. All designs indicated in these drawings are property of Arquitectonica International. All copyrights reserved (c) 2019. The data included in this study is conceptual in nature and will continue to be modified throughout the course of the projects development with the eventual integration of structural, MEP and life safety systems. As these are further refined, the numbers will be adjusted accordingly.

FINAL SUBMITTAL DRB  
7145 CARLYLE AVE,  
7144 BYRON AVE,  
MIAMI BEACH, FL 33141

72ND & PARK -  
RENDERING 01

DATE:  
07/08/2019

**A4-00**



**ARQUITECTONICA**

2900 Oak Avenue, Miami, FL 33133  
T 305.372.1812 F 305.372.1175

No copies, transmissions, reproductions, or electronic manipulation of any portion of these drawings in whole or in part are to be made without the express written permission of Arquitectonica International. All designs indicated in these drawings are property of Arquitectonica International. All copyrights reserved (c) 2019. The data included in this study is conceptual in nature and will continue to be modified throughout the course of the projects development with the eventual integration of structural, MEP and life safety systems. As these are further refined, the numbers will be adjusted accordingly.

FINAL SUBMITTAL DRB  
7145 CARLYLE AVE,  
7144 BYRON AVE,  
MIAMI BEACH, FL 33141

72ND & PARK -  
RENDERING 02

DATE:  
07/08/2019

**A4-01**



**ARQUITECTONICA**

2900 Oak Avenue, Miami, FL 33133  
T 305.372.1812 F 305.372.1175

No copies, transmissions, reproductions, or electronic manipulation of any portion of these drawings in whole or in part are to be made without the express written permission of Arquitectonica International. All designs indicated in these drawings are property of Arquitectonica International. All copyrights reserved (c) 2019. The data included in this study is conceptual in nature and will continue to be modified throughout the course of the projects development with the eventual integration of structural, MEP and life safety systems. As these are further refined, the numbers will be adjusted accordingly.

FINAL SUBMITTAL DRB  
7145 CARLYLE AVE,  
7144 BYRON AVE,  
MIAMI BEACH, FL 33141

72ND & PARK -  
RENDERING 03

DATE:  
07/08/2019

**A4-02**



**ARQUITECTONICA**

2900 Oak Avenue, Miami, FL 33133  
T 305.372.1812 F 305.372.1175

No copies, transmissions, reproductions, or electronic manipulation of any portion of these drawings in whole or in part are to be made without the express written permission of Arquitectonica International. All designs indicated in these drawings are property of Arquitectonica International. All copyrights reserved (c) 2019. The data included in this study is conceptual in nature and will continue to be modified throughout the course of the projects development with the eventual integration of structural, MEP and life safety systems. As these are further refined, the numbers will be adjusted accordingly.

FINAL SUBMITTAL DRB  
7145 CARLYLE AVE,  
7144 BYRON AVE,  
MIAMI BEACH, FL 33141

72ND & PARK -  
RENDERING 04

DATE:  
07/08/2019

**A4-03**



**ARQUITECTONICA**

2900 Oak Avenue, Miami, FL 33133  
T 305.372.1812 F 305.372.1175

No copies, transmissions, reproductions, or electronic manipulation of any portion of these drawings in whole or in part are to be made without the express written permission of Arquitectonica International. All designs indicated in these drawings are property of Arquitectonica International. All copyrights reserved (c) 2019. The data included in this study is conceptual in nature and will continue to be modified throughout the course of the projects development with the eventual integration of structural, MEP and life safety systems. As these are further refined, the numbers will be adjusted accordingly.

FINAL SUBMITTAL DRB  
7145 CARLYLE AVE,  
7144 BYRON AVE,  
MIAMI BEACH, FL 33141

72ND & PARK -  
RENDERING 05

DATE:  
07/08/2019

**A4-04**



**ARQUITECTONICA**

2900 Oak Avenue, Miami, FL 33133  
T 305.372.1812 F 305.372.1175

No copies, transmissions, reproductions, or electronic manipulation of any portion of these drawings in whole or in part are to be made without the express written permission of Arquitectonica International. All designs indicated in these drawings are property of Arquitectonica International. All copyrights reserved (c) 2019. The data included in this study is conceptual in nature and will continue to be modified throughout the course of the projects development with the eventual integration of structural, MEP and life safety systems. As these are further refined, the numbers will be adjusted accordingly.

FINAL SUBMITTAL DRB  
7145 CARLYLE AVE,  
7144 BYRON AVE,  
MIAMI BEACH, FL 33141

72ND & PARK -  
RENDERING 06

DATE:  
07/08/2019

**A4-05**



**ARQUITECTONICA**

2900 Oak Avenue, Miami, FL 33133  
T 305.372.1812 F 305.372.1175

No copies, transmissions, reproductions, or electronic manipulation of any portion of these drawings in whole or in part are to be made without the express written permission of Arquitectonica International. All designs indicated in these drawings are property of Arquitectonica International. All copyrights reserved (c) 2019. The data included in this study is conceptual in nature and will continue to be modified throughout the course of the projects development with the eventual integration of structural, MEP and life safety systems. As these are further refined, the numbers will be adjusted accordingly.

FINAL SUBMITTAL DRB  
7145 CARLYLE AVE,  
7144 BYRON AVE,  
MIAMI BEACH, FL 33141

72ND & PARK -  
RENDERING 07

DATE:  
07/08/2019

**A4-06**