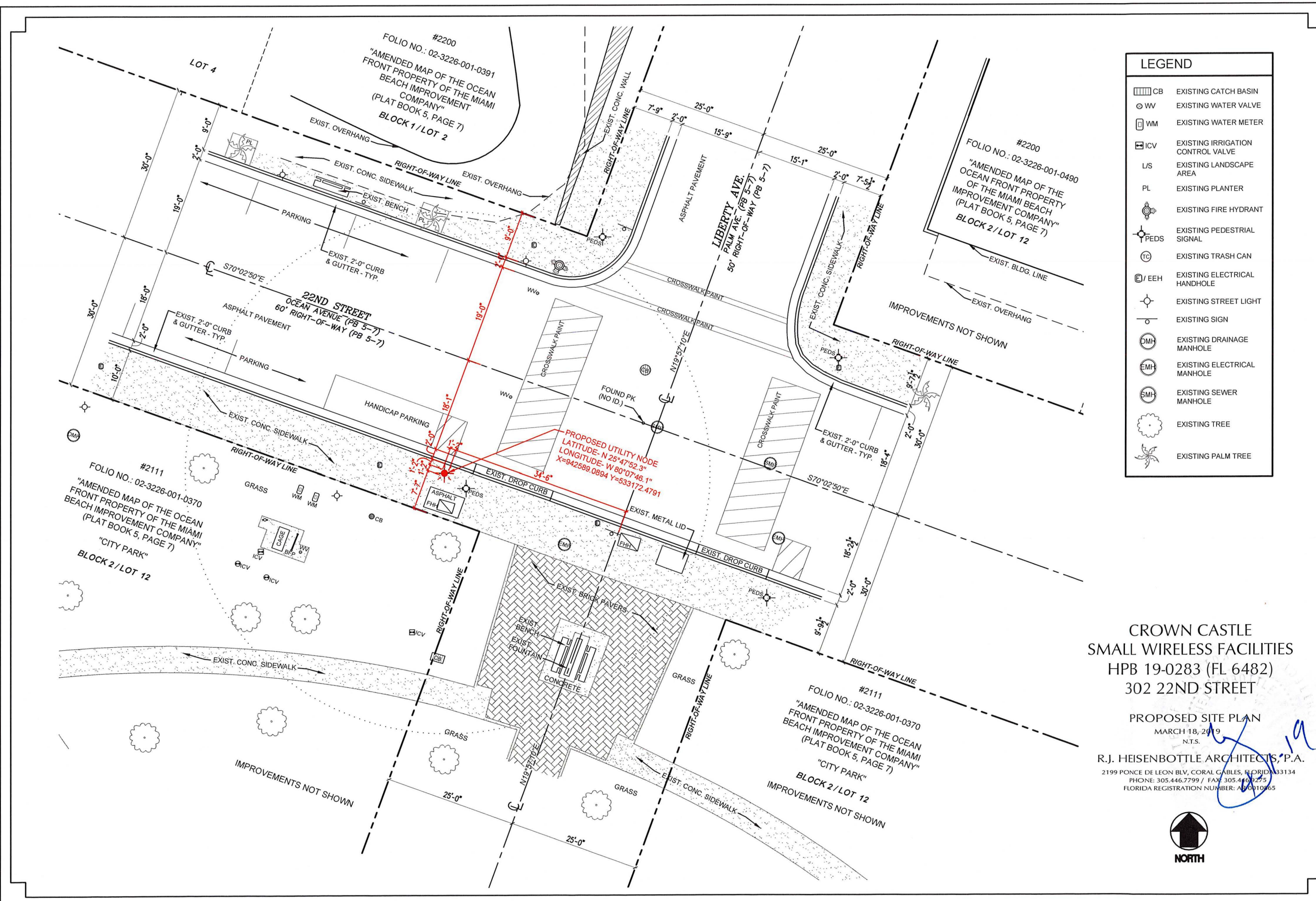


| LEGEND | |
|--------|-----------------------------------|
| | EXISTING CATCH BASIN |
| | EXISTING WATER VALVE |
| | EXISTING WATER METER |
| | EXISTING IRRIGATION CONTROL VALVE |
| | EXISTING LANDSCAPE AREA |
| | EXISTING PLANTER |
| | EXISTING FIRE HYDRANT |
| | EXISTING PEDESTRIAL SIGNAL |
| | EXISTING TRASH CAN |
| | EXISTING ELECTRICAL HANDHOLE |
| | EXISTING STREET LIGHT |
| | EXISTING SIGN |
| | EXISTING DRAINAGE MANHOLE |
| | EXISTING ELECTRICAL MANHOLE |
| | EXISTING SEWER MANHOLE |
| | EXISTING TREE |
| | EXISTING PALM TREE |

CROWN CASTLE
 SMALL WIRELESS FACILITIES
 HPB 19-0283 (FL 6482)
 302 22ND STREET

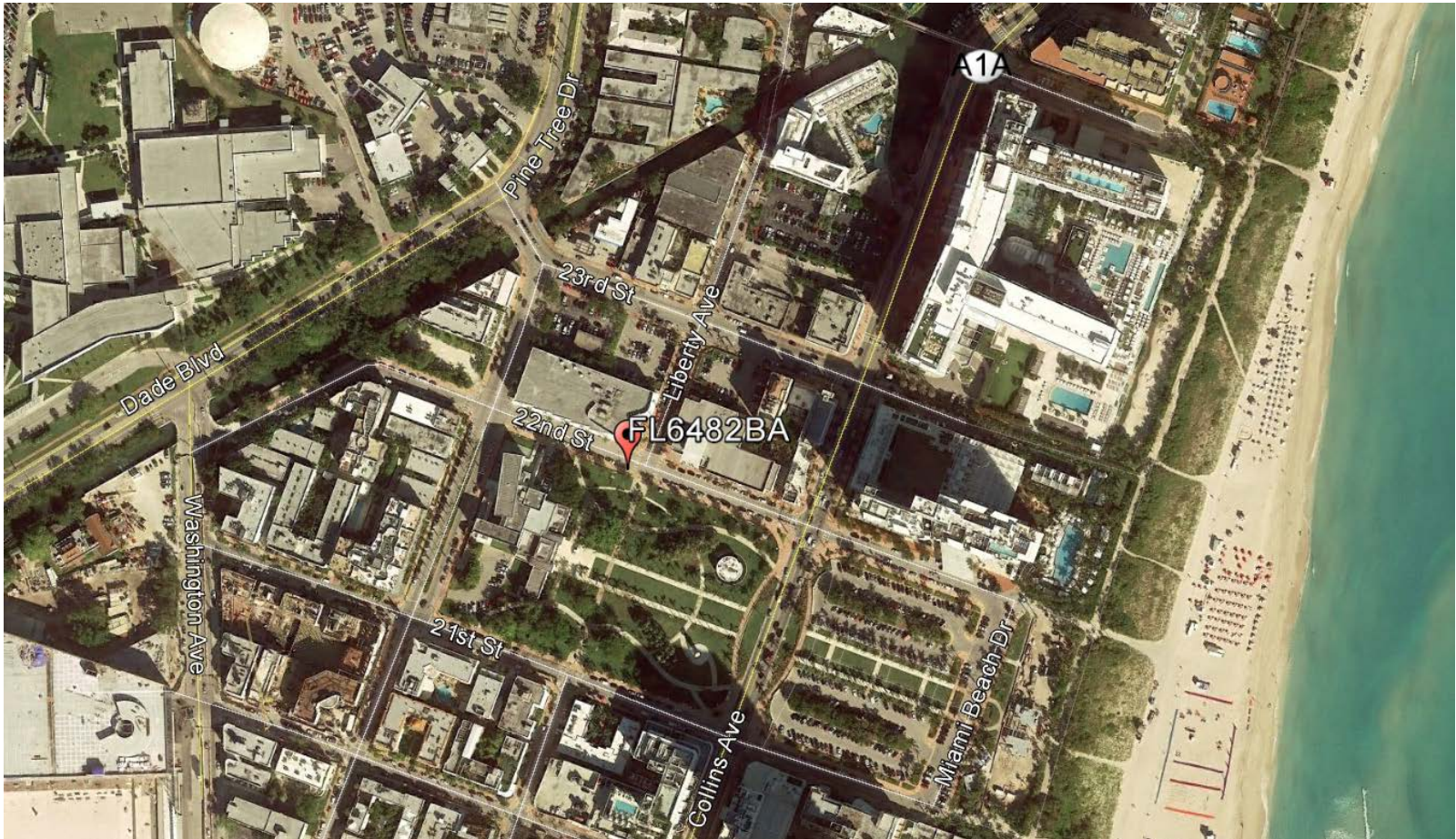
PROPOSED SITE PLAN
 MARCH 18, 2019
 N.T.S.
 R.J. HEISENBOTTLE ARCHITECTS, P.A.
 2199 PONCE DE LEON BLV, CORAL GABLES, FLORIDA 33134
 PHONE: 305.446.7799 / FAX: 305.416.9275
 FLORIDA REGISTRATION NUMBER: AB 0010665

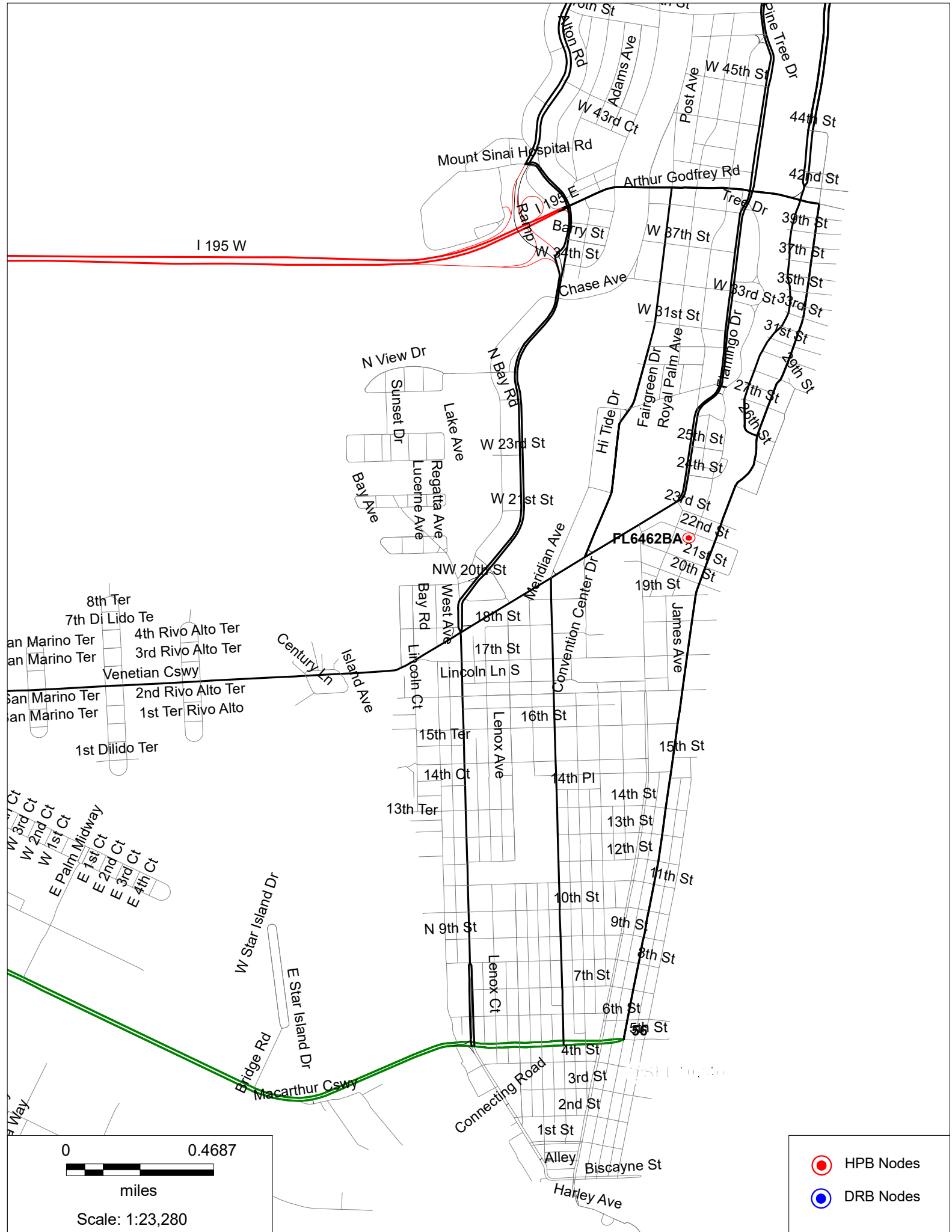


FL6482BA

302 22nd St., Miami Beach, FL 33139

Ariel View





I 195 W

FL6462BA

0 0.4687

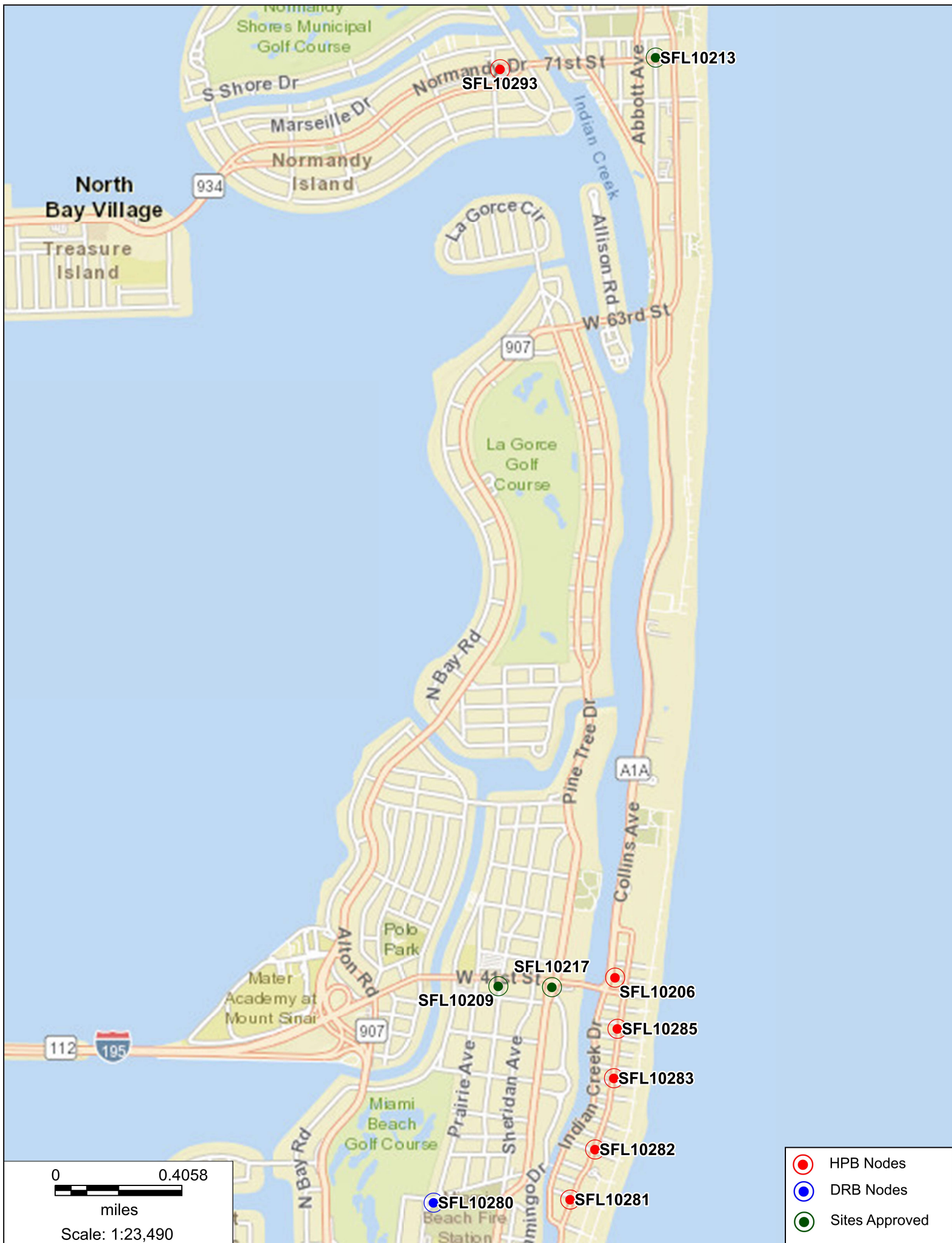
miles

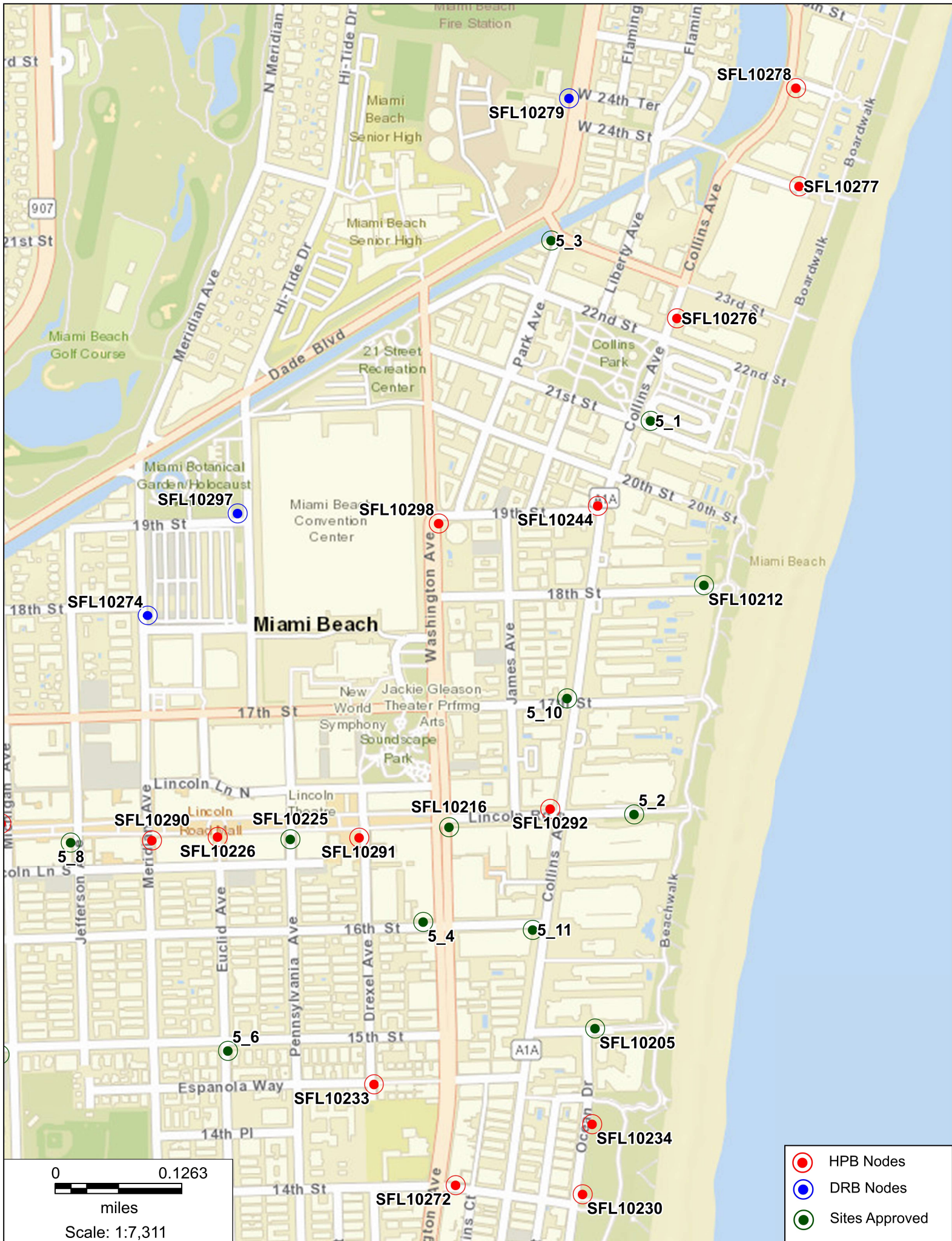
Scale: 1:23,280

HPB Nodes

DRB Nodes









- HPB Nodes
- DRB Nodes
- Sites Approved



FL6482BA

302 22nd St., Miami Beach, FL 33139

Photosim – Proposed Stealth Pole



FL6482BA

302 22nd St., Miami Beach, FL 33139

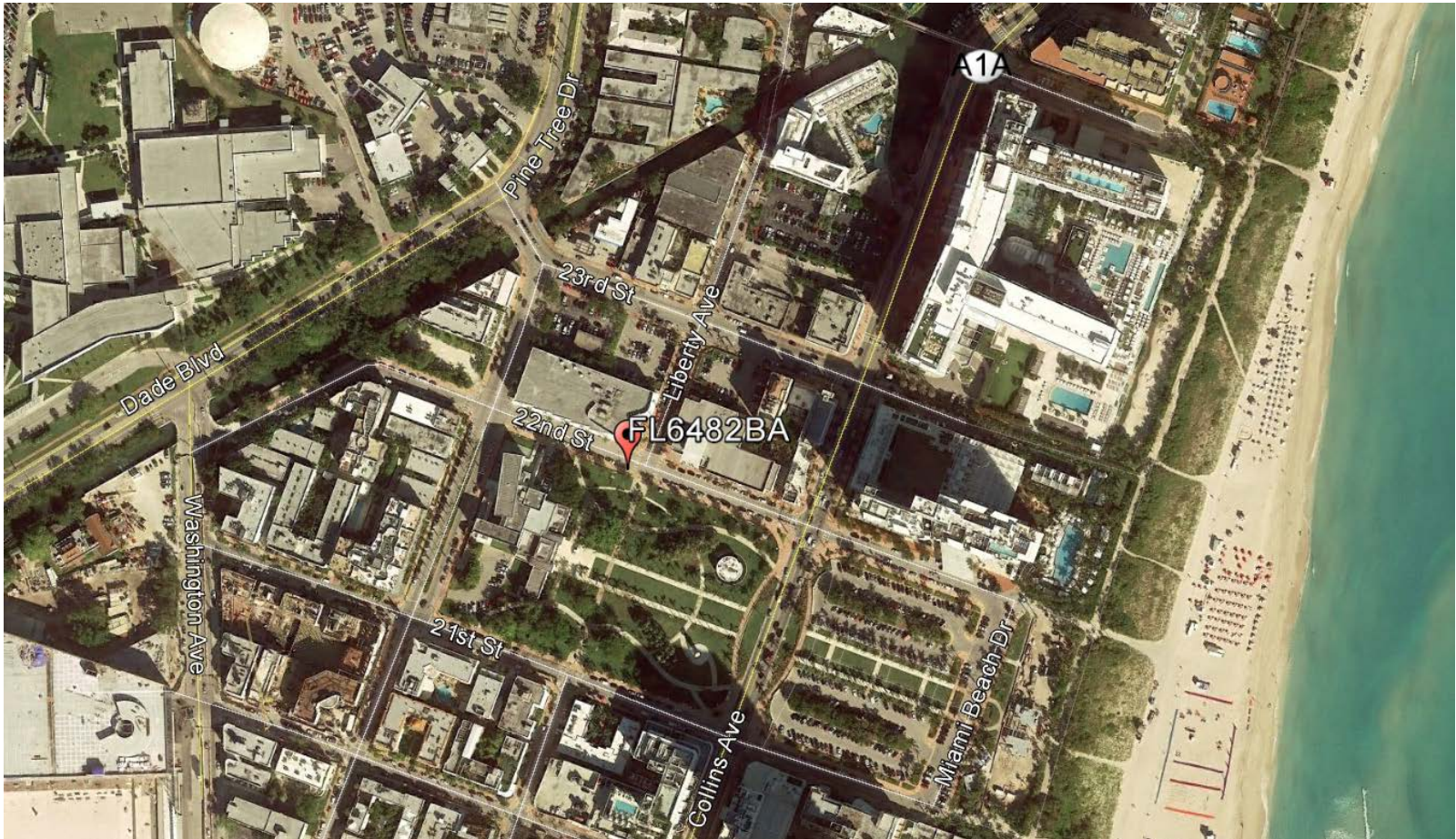
Photosim - Proposed Stealth Pole



FL6482BA

302 22nd St., Miami Beach, FL 33139

Ariel View



FL6482BA

302 22nd St., Miami Beach, FL 33139

North



FL6482BA

302 22nd St., Miami Beach, FL 33139

East



FL6482BA

302 22nd St., Miami Beach, FL 33139

South



FL6482BA

302 22nd St., Miami Beach, FL 33139

West

