



Submittal Data Sheet

Project Name: PLYMOUTH HOTEL
Location:
Engineer: Ivan Velez, P.E.
Submitted to: ESBER/ABEL
Submitted by:
Reference: ESI

Approval:
Date: 1/9/2014
Construction:
Unit #:
Drawing #:

Performance

Outdoor Unit Model No: RXYQ120PBTJ
Type:
Rated Cooling Capacity (Btu/hr): 114000
Nom Cooling Capacity (Btu/hr): 120000
Cooling Input Power (kW): 9.58
SEER: N/A
IEER: 20.4/17.2
Rated Heating Capacity (Btu/hr): 129000
Nom Heating Capacity (Btu/hr): 135000
Heating Input Power (kW): 10.42
Heating COP (Btu/hr / Btu/hr): 3.8/3.63
HSPF: N/A
Heating COP 17F (Btu/hr / Btu/hr): 2.65/2.5

Condensing Unit Type: 10-Ton VRV-III Heat Pump

Unit Combination:

Rated Cooling Conditions Indoor: 80°F DB/67°F WB
Outdoor: 95°F DB/75°F WB
Rated Heating Conditions Indoor: 70°F DB/60°F WB
Outdoor: 47°F DB/43°F WB
Rated Piping Length (ft) 75 / 25
Rated Height Difference (ft) 0

Condensing Unit Details

Power Supply (V/Hz/Ph): 208-230/60/3ph
Power Supply Connections: L1, L2, L3 Ground
Min. Circuit Amps MCA (A): 43
Max. Overcurrent Protection (MOP)(A): 50
Max. Starting Current MSC(A): 131
Rated Load Amps RLA (A): 10.8+16.8
Dimensions Height (Inch): 66-1/8
Dimensions Width (Inch): 48-7/8
Dimensions Depth (Inch): 30-1/8
Net Weight (lbs): 620

Compressor Type: Inverter
Capacity Control Range (%): 14 - 100
Capacity Index Limit: 60 - 156 (130%)
Airflow Rate (CFM): 8230
Gas Pipe Connection (inch): 1-1/8
Liquid Pipe Connection (inch): 1/2
H/L Pressure Connection (inch):
H/L Equalizing Connection (inch):
Sound Pressure Level (dBA): 60
Sound Power Level (dBA):
Max. No. of Indoor Units: 20

System Details

Refrigerant Type: R-410A
Holding Refrigerant Charge (lbs): 22.1
Additional Charge (lbs/ft): install data
Pre-charge Piping (Length ft): -
Max. Pipe Length (Total ft):
Max. Pipe Length (Vertical ft): 164 ft (295 ft) / 295 ft
Max Height Separation (Ind to Ind ft):

Cooling Operation Range (°F): 23 - 110
Cooling Range w/Baffle (°F):
Heating Operation Range (°F): 0 - 77 / (-4) - 60
Heating Range w/Baffle (°F):



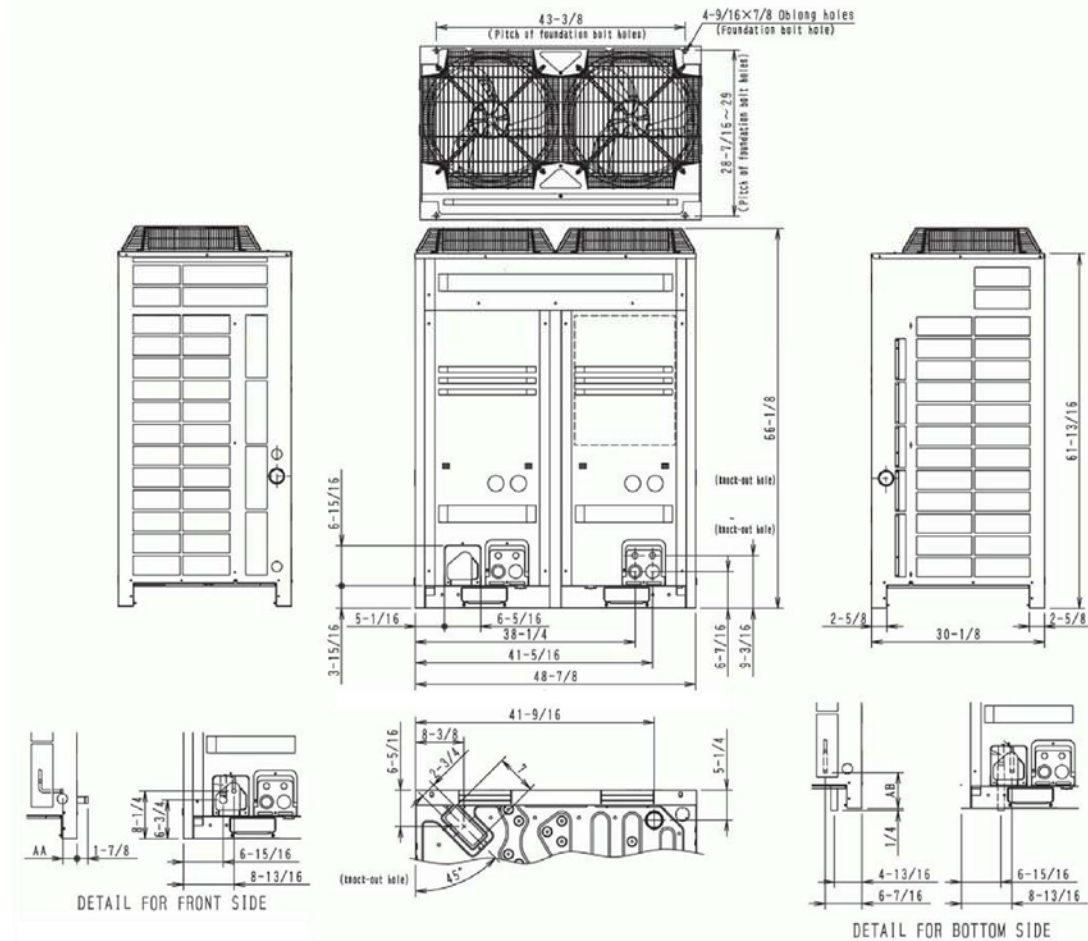
Submittal Data Sheet

Project Name: PLYMOUTH HOTEL
Location:
Engineer: Ivan Velez, P.E.
Submitted to: ESBER/ABEL
Submitted by:
Reference: ESI

Approval:
Date: 1/9/2014
Construction:
Unit #:
Drawing #:

Dimensional Drawing - Condensing Unit

RXYQ120PBTJ



REVISIONS / SUBMISSIONS	
1	-
2	-
3	-
4	-
5	-
6	-
7	-
8	-
9	-
10	-
11	-
12	-

1323

ALL DRAWINGS AND WRITTEN MATERIAL APPEARING HEREIN
CONSTITUTE THE ORIGINAL AND UNPUBLISHED WORK OF KOB
KARP, INC. AND MAY NOT BE REPRODUCED OR TRANSMITTED
WITHOUT THE WRITTEN CONSENT OF KOB KARP
ARCHITECTURE & INTERIOR DESIGN, INC. AIA # 2012

PLYMOUTH
336 21ST STREET
MIAMI BEACH, FL 33139

CUT SHEETS
PLYMOUTH HOTEL

Lic. # AR0012578

ARCHITECTURE
INTERIOR DESIGN
PLANNING
AIA ASID NCARB
2915 Biscayne Boulevard
Suite 200
Miami, Florida 33137
O: 305.573.8118
F: 305.573.3766
WWW.KOBKARP.COM



DRAWN BY:
CHECKED BY:
DATE:

A8.00