



# MIAMI BEACH CONVENTION CENTER HOTEL

## FINAL SUBMITTAL 2019.03.12

### ARCHITECTURE

A0-00	COVER SHEET AND DRAWING INDEX
A0-01	SITE SURVEY
A0-02	SITE SURVEY
A0-03	LOCATION MAP
A0-04	CONTEXT - AERIAL VIEWS
A0-05	CURRENT COLOR PHOTOGRAPHS
A0-06	CURRENT COLOR PHOTOGRAPHS
A0-07	CURRENT COLOR PHOTOGRAPHS
A0-08	CURRENT COLOR PHOTOGRAPHS
A0-09	CURRENT COLOR PHOTOGRAPHS
A0-10	CURRENT COLOR PHOTOGRAPHS
A0-11	EXISTING CONDITIONS - FLOOR PLAN
A0-12	EXISTING CONDITIONS - ELEVATION
A0-13	DEMOLITION PLAN
A0-14	DEMOLITION ELEVATION
A0-15	ZONING DATA
A0-16	OVERALL FAR CALCULATION
A0-17	FAR DIAGRAM
A0-18	FAR DIAGRAM
A0-19	FAR DIAGRAM
A0-20	FAR DIAGRAM
A0-21	FAR DIAGRAM
A0-22	FAR DIAGRAM
A0-23	FAR DIAGRAM
A0-24	FAR DIAGRAM
A1-00	CONTEXT LOCATION PLAN - CCC DISTRICT
A1-01	SITE PLAN - SETBACK DIAGRAM
A1-02	RENDERED SITE PLAN
A1-03	GROUND LEVEL
A1-04	LEVEL 02 - PARKING
A1-05	LEVEL 03 - BALLROOM
A1-06	LEVEL 04 - SPA AND FITNESS
A1-07	LEVEL 05 - POOL DECK
A1-08	LEVEL 06, 16
A1-09	LEVEL 07
A1-10	LEVEL 08
A1-11	LEVEL 09
A1-12	LEVEL 10
A1-13	LEVEL 11
A1-14	LEVEL 12
A1-15	LEVEL 13
A1-16	LEVEL 14-15
A1-17	LEVEL 17
A1-18	ROOF PLAN
A1-19	B/W PLAN GROUND LEVEL
A1-20	B/W PLAN LEVEL 02 - PARKING
A1-21	B/W PLAN LEVEL 03 - BALLROOM
A1-22	B/W PLAN LEVEL 04 - SPA AND FITNESS
A1-23	B/W PLAN LEVEL 05 - POOL DECK
A1-24	B/W PLAN LEVEL 06,16
A1-25	B/W PLAN LEVEL 07
A1-26	B/W PLAN LEVEL 08

A1-27	B/W PLAN LEVEL 09
A1-28	B/W PLAN LEVEL 10
A1-29	B/W PLAN LEVEL 11
A1-30	B/W PLAN LEVEL 12
A1-31	B/W PLAN LEVEL 13
A1-32	B/W PLAN LEVEL 14-15
A1-33	B/W PLAN LEVEL 17
A1-34	B/W PLAN ROOF PLAN
A2-00	MATERIAL BOARD
A2-01	RENDERED SOUTH ELEVATION
A2-02	RENDERED WEST ELEVATION
A2-03	STREET ELEVATION - 17TH STREET
A2-04	STREET ELEVATION - CONVENTION CENTER DRIVE
A2-05	B/W SOUTH ELEVATION
A2-06	B/W WEST ELEVATION
A2-07	B/W EAST ELEVATION
A2-08	B/W NORTH ELEVATION
A2-09	GROUND FLOOR STOREFRONT SYSTEM
A3-00	SECTION 1-1
A3-01	SECTION 2-2
A4-00	RENDERING 01
A4-01	RENDERING 02
A4-02	RENDERING 03
A4-03	RENDERING 04
A4-04	RENDERING 05
A4-05	RENDERING 06
A4-06	RENDERING 06 - ENLARGED VIEW
A4-07	RENDERING 07
A4-08	RENDERING 08
A4-09	RENDERING 09
A5-00	DIAGRAM

### LANDSCAPE

L0-000	LANDSCAPE INDEX OF DRAWINGS
L0-001	LANDSCAPE NOTES
L0-002	LANDSCAPE CALCULATIONS
L0-003	PLANT IMAGES
L0-004	TREE SURVEY
L1-000	TREE DISPOSITION PLAN
L1-001	TREE MITIGATION PLAN
L1-100	GROUND LEVEL CONTEXT PLAN
L1-101	GROUND LEVEL RENDERED PLAN
L1-110	GROUND LEVEL LANDSCAPE PLAN
L1-200	PODIUM LEVEL RENDERED PLAN
L1-210	PODIUM LEVEL LANDSCAPE PLAN
L5-110	HARDSCAPE DETAILS
L5-120	PLANTING DETAILS
L5-210	PODIUM LEVEL LANDSCAPE DETAILS
L6-000	TREE DISPOSITION SCHEDULE
L6-001	TREE DISPOSITION SCHEDULE CONT'D
L6-002	TREE MITIGATION SCHEDULE
L6-100	GROUND LEVEL LANDSCAPE SCHEDULES
L6-200	PODIUM LEVEL LANDSCAPE SCHEDULES

### ARQUITECTONICA

2900 Oak Avenue, Miami, FL 33133  
T 305.372.1812 F 305.372.1175

No copies, transmissions, reproductions, or electronic manipulation of any portion of these drawings in whole or in part are to be made without the express written permission of Arquitectonica International. All designs indicated in these drawings are property of Arquitectonica International. All copyrights reserved (c) 2018. The data included in this study is conceptual in nature and will continue to be modified throughout the course of the projects development with the eventual integration of structural, MEP and life safety systems. As these are further refined, the numbers will be adjusted accordingly.

MIAMI BEACH CONVENTION CENTER HOTEL  
CONVENTION CENTER DRIVE & 17TH ST, MIAMI BEACH, FL

### COVER SHEET AND DRAWING INDEX

DATE:  
2019.03.12

A0-00



**A0-01**









**ARQUITECTONICA**

2900 Oak Avenue, Miami, FL 33133  
T 305.372.1812 F 305.372.1175

No copies, transmissions, reproductions, or electronic manipulation of any portion of these drawings in whole or in part are to be made without the express written permission of Arquitectonica International. All designs indicated in these drawings are property of Arquitectonica International. All copyrights reserved (c) 2018. The data included in this study is conceptual in nature and will continue to be modified throughout the course of the projects development with the eventual integration of structural, MEP and life safety systems. As these are further refined, the numbers will be adjusted accordingly.

MIAMI BEACH CONVENTION CENTER HOTEL  
CONVENTION CENTER DRIVE & 17TH ST, MIAMI BEACH, FL

**LOCATION MAP**

**DATE:**  
**2019.03.12**

**A0-03**





**ARQUITECTONICA**

2900 Oak Avenue, Miami, FL 33133  
T 305.372.1812 F 305.372.1175

No copies, transmissions, reproductions, or electronic manipulation of any portion of these drawings in whole or in part are to be made without the express written permission of Arquitectonica International. All designs indicated in these drawings are property of Arquitectonica International. All copyrights reserved (c) 2018. The data included in this study is conceptual in nature and will continue to be modified throughout the course of the project's development with the eventual integration of structural, MEP and life safety systems. As these are further refined, the numbers will be adjusted accordingly.

MIAMI BEACH CONVENTION CENTER HOTEL  
CONVENTION CENTER DRIVE & 17TH ST, MIAMI BEACH, FL

**CONTEXT - AERIAL VIEWS**

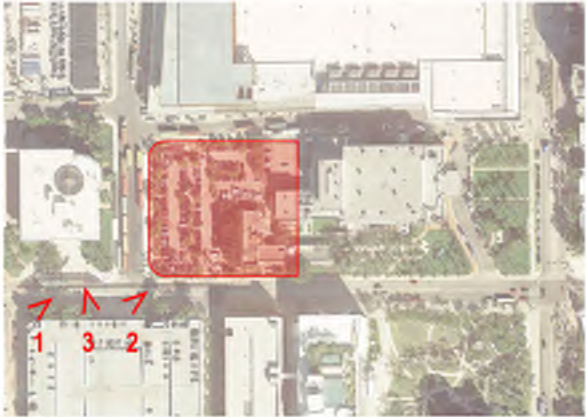
**DATE:**  
**2019.03.12**

**A0-04**





VIEW 1



VIEW 2



VIEW 3

**ARQUITECTONICA**

2900 Oak Avenue, Miami, FL 33133  
T 305.372.1812 F 305.372.1175

No copies, transmissions, reproductions, or electronic manipulation of any portion of these drawings in whole or in part are to be made without the express written permission of Arquitectonica International. All designs indicated in these drawings are property of Arquitectonica International. All copyrights reserved (c) 2018. The data included in this study is conceptual in nature and will continue to be modified throughout the course of the project's development with the eventual integration of structural, MEP and life safety systems. As these are further refined, the numbers will be adjusted accordingly.

MIAMI BEACH CONVENTION CENTER HOTEL  
CONVENTION CENTER DRIVE & 17TH ST, MIAMI BEACH, FL

CURRENT COLOR PHOTOGRAPHS

DATE:  
2019.03.12

A0-05

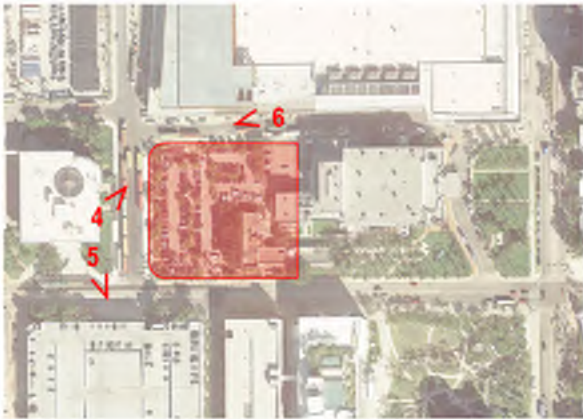




VIEW 4



VIEW 5



VIEW 6

**ARQUITECTONICA**

2900 Oak Avenue, Miami, FL 33133  
T 305.372.1812 F 305.372.1175

No copies, transmissions, reproductions, or electronic manipulation of any portion of these drawings in whole or in part are to be made without the express written permission of Arquitectonica International. All designs indicated in these drawings are property of Arquitectonica International. All copyrights reserved (c) 2018. The data included in this study is conceptual in nature and will continue to be modified throughout the course of the projects development with the eventual integration of structural, MEP and life safety systems. As these are further refined, the numbers will be adjusted accordingly.

MIAMI BEACH CONVENTION CENTER HOTEL  
CONVENTION CENTER DRIVE & 17TH ST, MIAMI BEACH, FL

CURRENT COLOR PHOTOGRAPHS

DATE:  
2019.03.12

A0-06

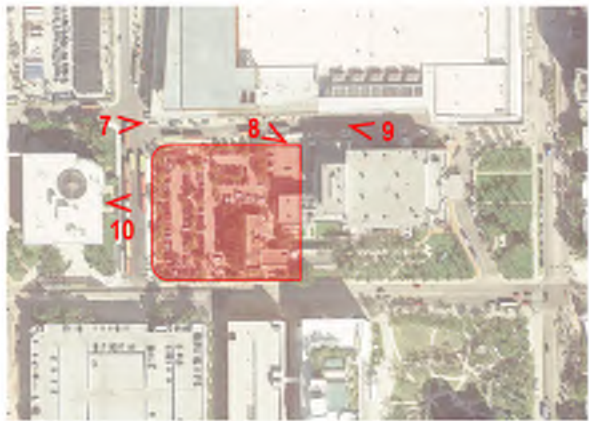




VIEW 7



VIEW 8



VIEW 9



VIEW 10

# ARQUITECTONICA

2900 Oak Avenue, Miami, FL 33133  
T 305.372.1812 F 305.372.1175

No copies, transmissions, reproductions, or electronic manipulation of any portion of these drawings in whole or in part are to be made without the express written permission of Arquitectonica International. All designs indicated in these drawings are property of Arquitectonica International. All copyrights reserved (c) 2018. The data included in this study is conceptual in nature and will continue to be modified throughout the course of the project's development with the eventual integration of structural, MEP and life safety systems. As these are further refined, the numbers will be adjusted accordingly.

MIAMI BEACH CONVENTION CENTER HOTEL  
CONVENTION CENTER DRIVE & 17TH ST, MIAMI BEACH, FL

CURRENT COLOR PHOTOGRAPHS

DATE:  
2019.03.12

A0-07

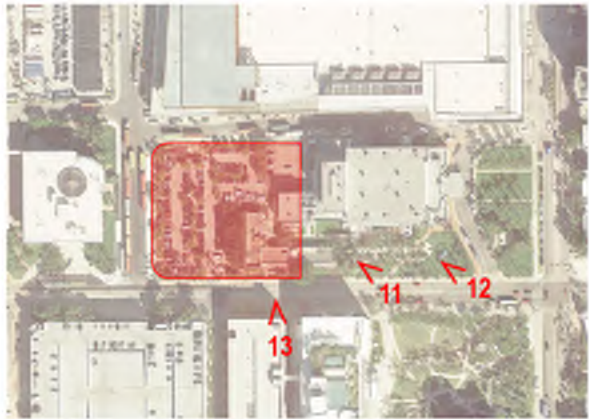




VIEW 11



VIEW 12



VIEW 13

**ARQUITECTONICA**

2900 Oak Avenue, Miami, FL 33133  
T 305.372.1812 F 305.372.1175

No copies, transmissions, reproductions, or electronic manipulation of any portion of these drawings in whole or in part are to be made without the express written permission of Arquitectonica International. All designs indicated in these drawings are property of Arquitectonica International. All copyrights reserved (c) 2018. The data included in this study is conceptual in nature and will continue to be modified throughout the course of the projects development with the eventual integration of structural, MEP and life safety systems. As these are further refined, the numbers will be adjusted accordingly.

MIAMI BEACH CONVENTION CENTER HOTEL  
CONVENTION CENTER DRIVE & 17TH ST, MIAMI BEACH, FL

**CURRENT COLOR PHOTOGRAPHS**

**DATE:**  
**2019.03.12**

**A0-08**





VIEW 14



VIEW 15



VIEW 16

**ARQUITECTONICA**

2900 Oak Avenue, Miami, FL 33133  
T 305.372.1812 F 305.372.1175

No copies, transmissions, reproductions, or electronic manipulation of any portion of these drawings in whole or in part are to be made without the express written permission of Arquitectonica International. All designs indicated in these drawings are property of Arquitectonica International. All copyrights reserved (c) 2018. The data included in this study is conceptual in nature and will continue to be modified throughout the course of the projects development with the eventual integration of structural, MEP and life safety systems. As these are further refined, the numbers will be adjusted accordingly.

MIAMI BEACH CONVENTION CENTER HOTEL  
CONVENTION CENTER DRIVE & 17TH ST, MIAMI BEACH, FL

CURRENT COLOR PHOTOGRAPHS

DATE:  
2019.03.12

A0-09





VIEW 17



VIEW 18

## ARQUITECTONICA

2900 Oak Avenue, Miami, FL 33133  
T 305.372.1812 F 305.372.1175

No copies, transmissions, reproductions, or electronic manipulation of any portion of these drawings in whole or in part are to be made without the express written permission of Arquitectonica International. All designs indicated in these drawings are property of Arquitectonica International. All copyrights reserved (c) 2018. The data included in this study is conceptual in nature and will continue to be modified throughout the course of the project's development with the eventual integration of structural, MEP and life safety systems. As these are further refined, the numbers will be adjusted accordingly.

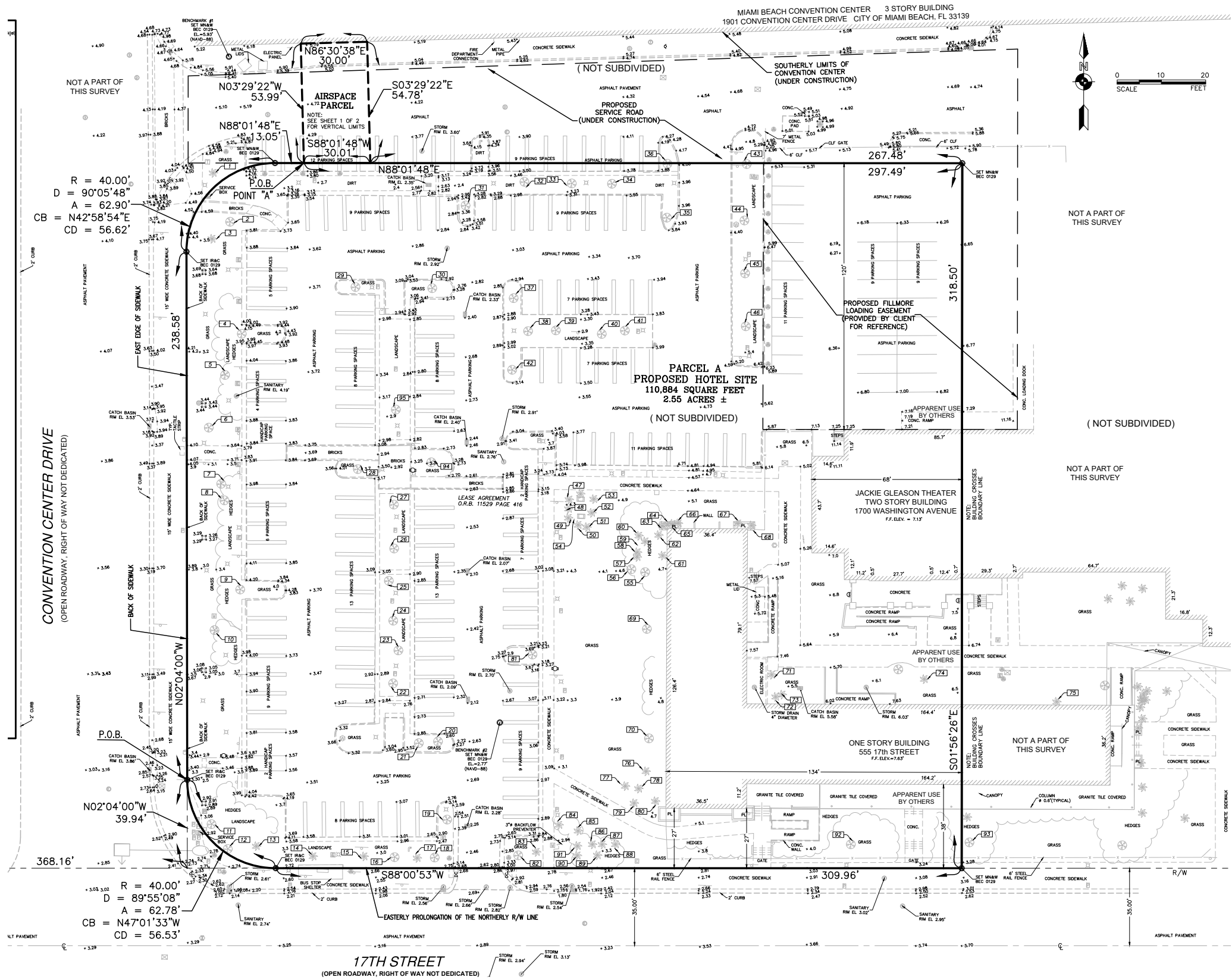
MIAMI BEACH CONVENTION CENTER HOTEL  
CONVENTION CENTER DRIVE & 17TH ST, MIAMI BEACH, FL

CURRENT COLOR PHOTOGRAPHS

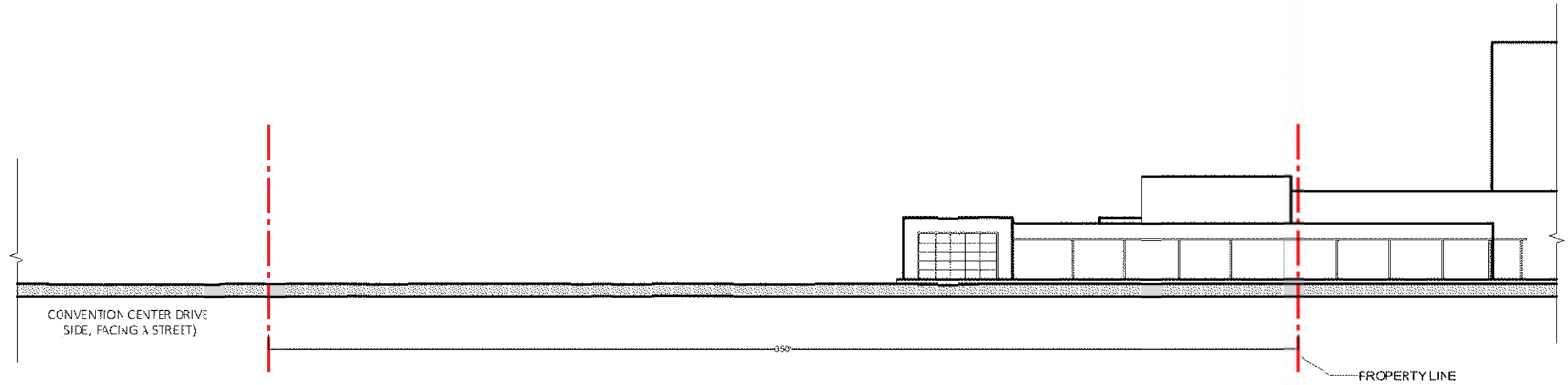
DATE:  
2019.03.12

A0-10

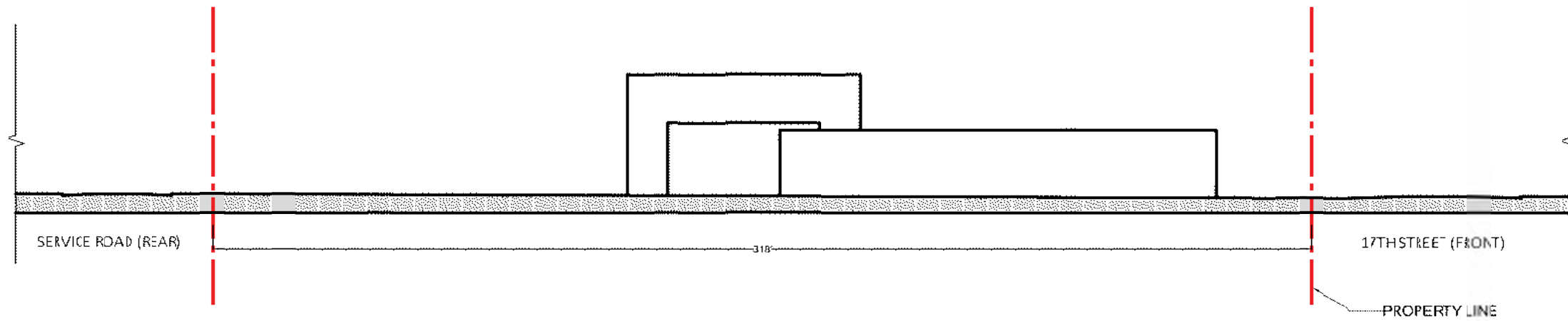








SOUTH EXISTING ELEVATION



WEST EXISTING ELEVATION

## ARQUITECTONICA

2900 Oak Avenue, Miami, FL 33133  
T 305.372.1812 F 305.372.1175

No copies, transmissions, reproductions, or electronic manipulation of any portion of these drawings in whole or in part are to be made without the express written permission of Arquitectonica International. All designs indicated in these drawings are property of Arquitectonica International. All copyrights reserved (c) 2018. The data included in this study is conceptual in nature and will continue to be modified throughout the course of the project's development with the eventual integration of structural, MEP and life safety systems. As these are further refined, the numbers will be adjusted accordingly.

MIAMI BEACH CONVENTION CENTER HOTEL  
CONVENTION CENTER DRIVE & 17TH ST, MIAMI BEACH, FL

EXISTING CONDITIONS  
ELEVATION

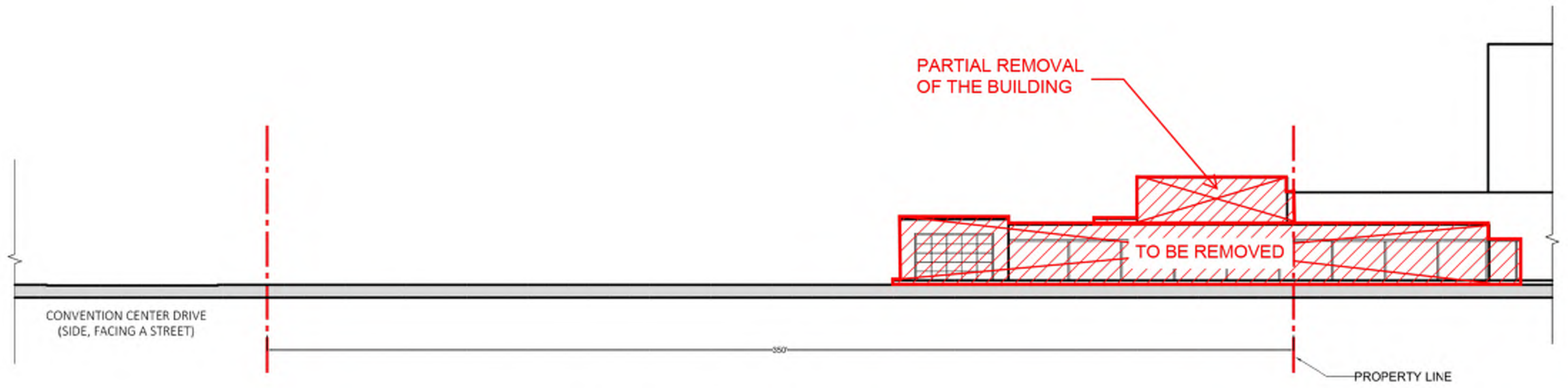
DATE:  
2019.03.12

A0-12

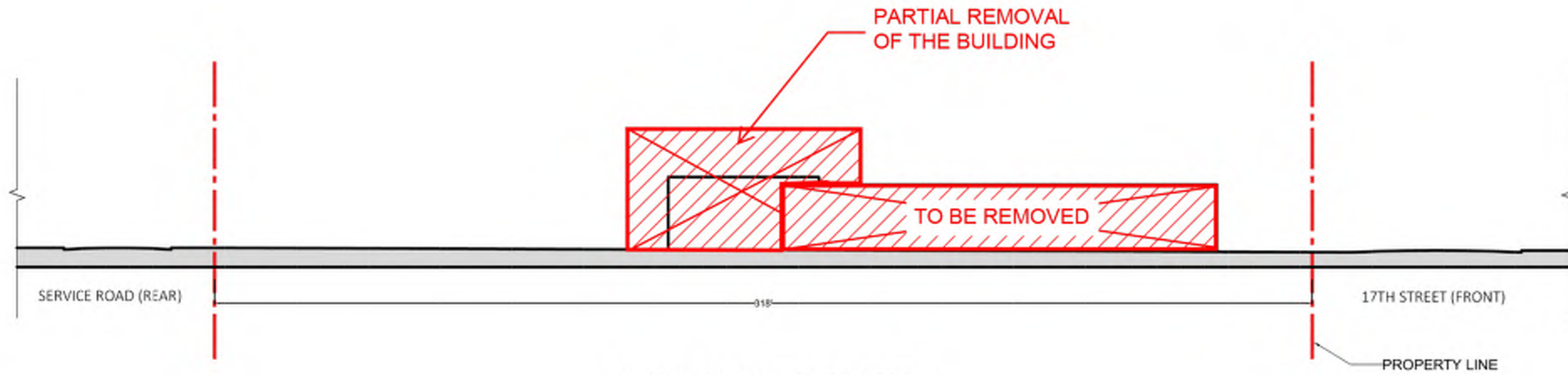








SOUTH EXISTING ELEVATION



WEST EXISTING ELEVATION

## ARQUITECTONICA

2900 Oak Avenue, Miami, FL 33133  
T 305.372.1812 F 305.372.1175

No copies, transmissions, reproductions, or electronic manipulation of any portion of these drawings in whole or in part are to be made without the express written permission of Arquitectonica International. All designs indicated in these drawings are property of Arquitectonica International. All copyrights reserved (c) 2018. The data included in this study is conceptual in nature and will continue to be modified throughout the course of the projects development with the eventual integration of structural, MEP and life safety systems. As these are further refined, the numbers will be adjusted accordingly.

MIAMI BEACH CONVENTION CENTER HOTEL  
CONVENTION CENTER DRIVE & 17TH ST, MIAMI BEACH, FL

DEMOLITION ELEVATION

DATE:  
2019.03.12

A0-14