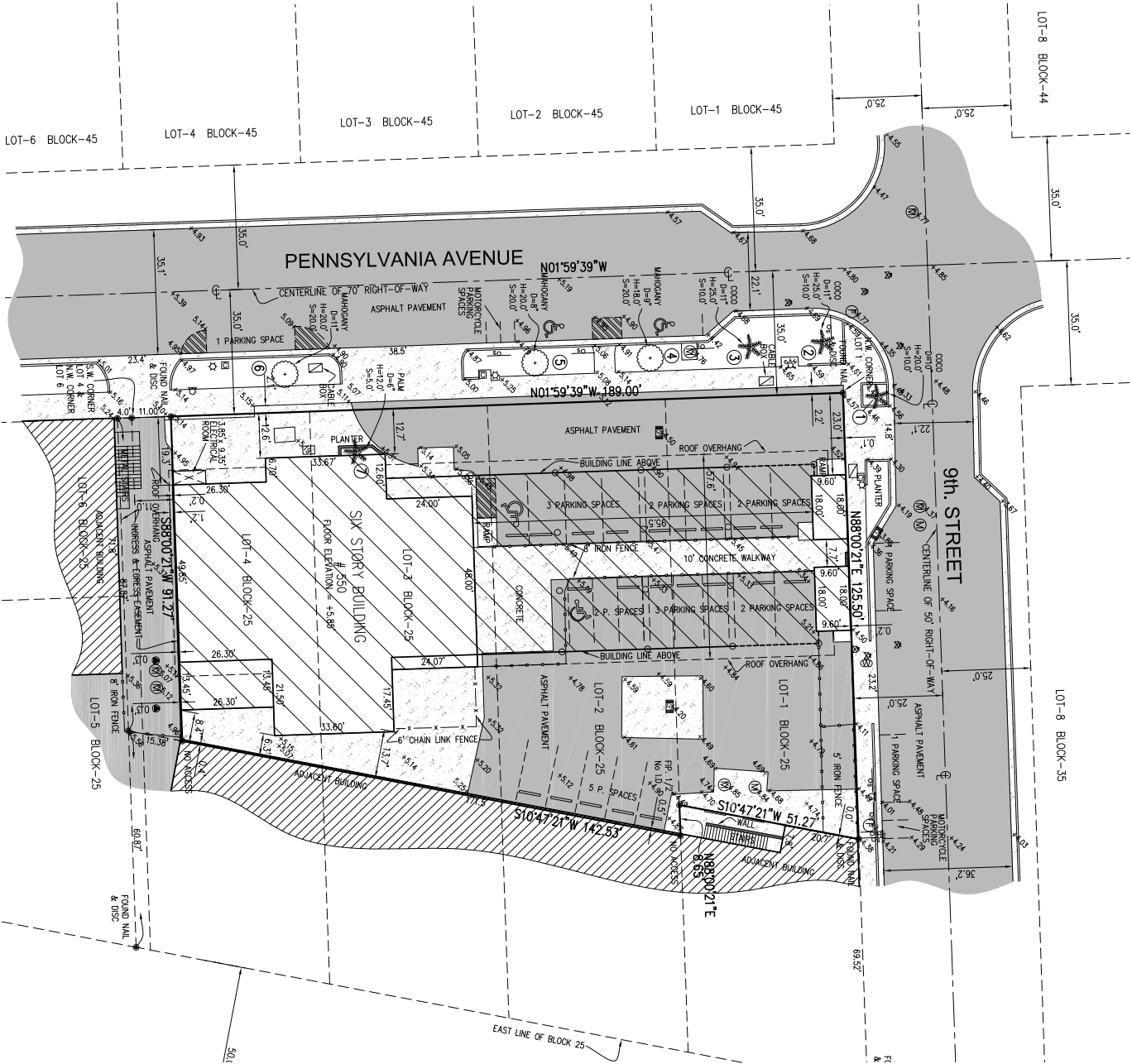
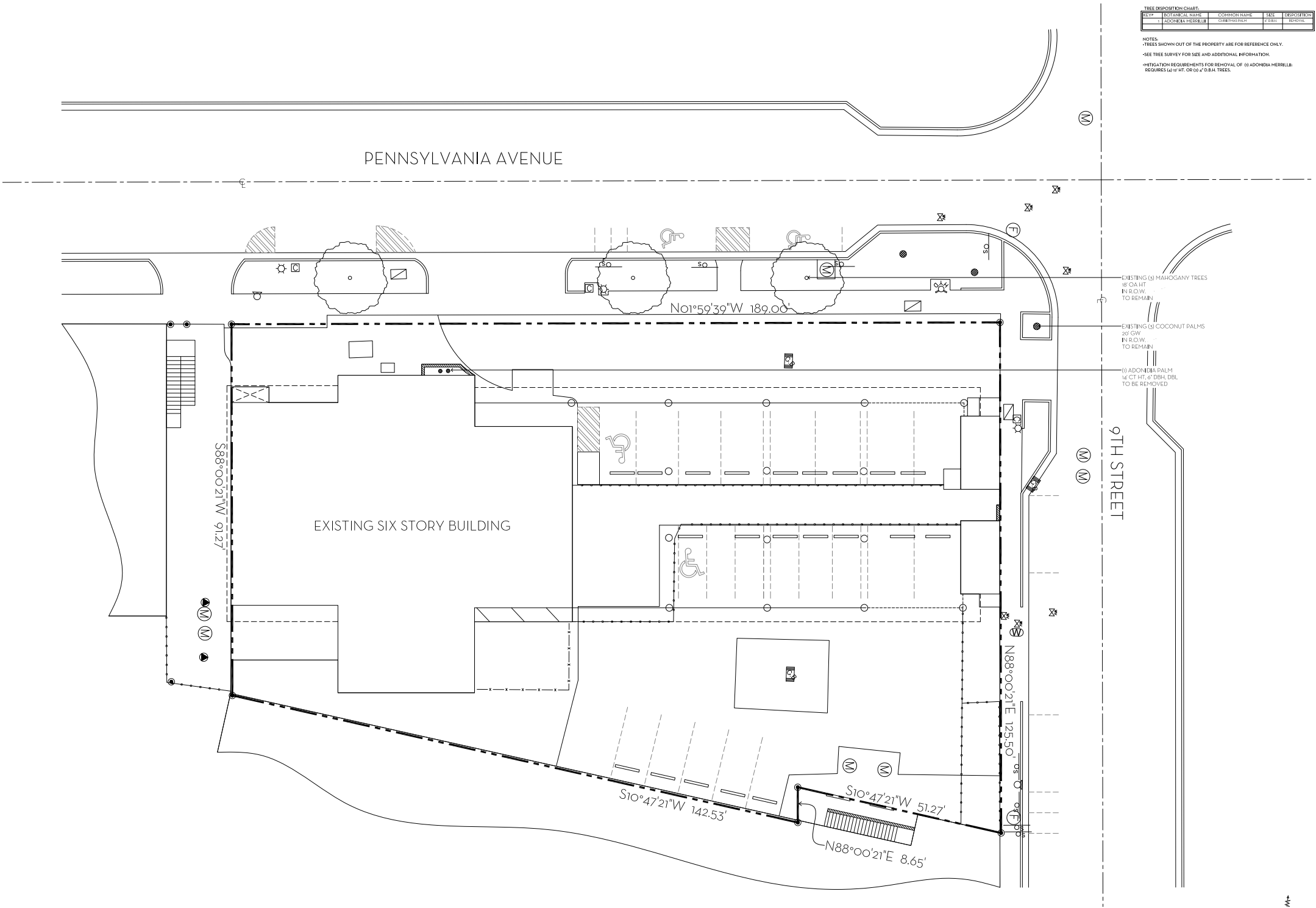


L-1.0-SITE SURVEY



L-1.01-TREE DISPOSITION PLAN

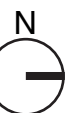


TREE DISPOSITION CHART:				
REV	BOTANICAL NAME	COMMON NAME	DATE	DISPOSITION
1	ADONIDIA MERILLII	CHERRY PEAR	7/2019	REMOVED

NOTES:
- TREES SHOWN OUT OF THE PROPERTY ARE FOR REFERENCE ONLY.
- SEE TREE SURVEY FOR SIZE AND ADDITIONAL INFORMATION.
- MITIGATION REQUIREMENTS FOR REMOVAL OF (I) ADONIDIA MERILLII:
REQUIRES 1/4\"/>

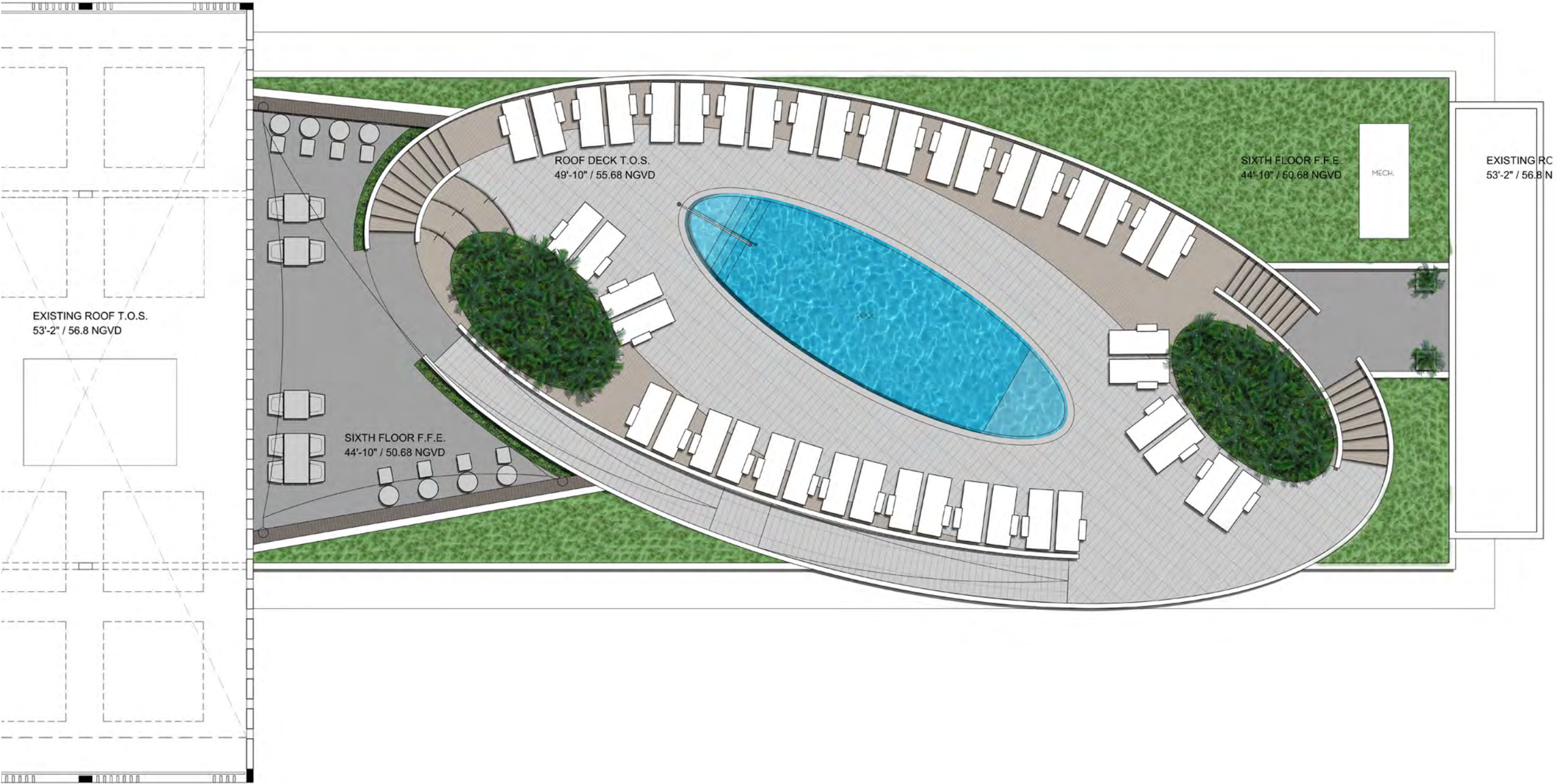


L-1.02-CONCEPTUAL RENDERING-FIRST FLOOR PLAN

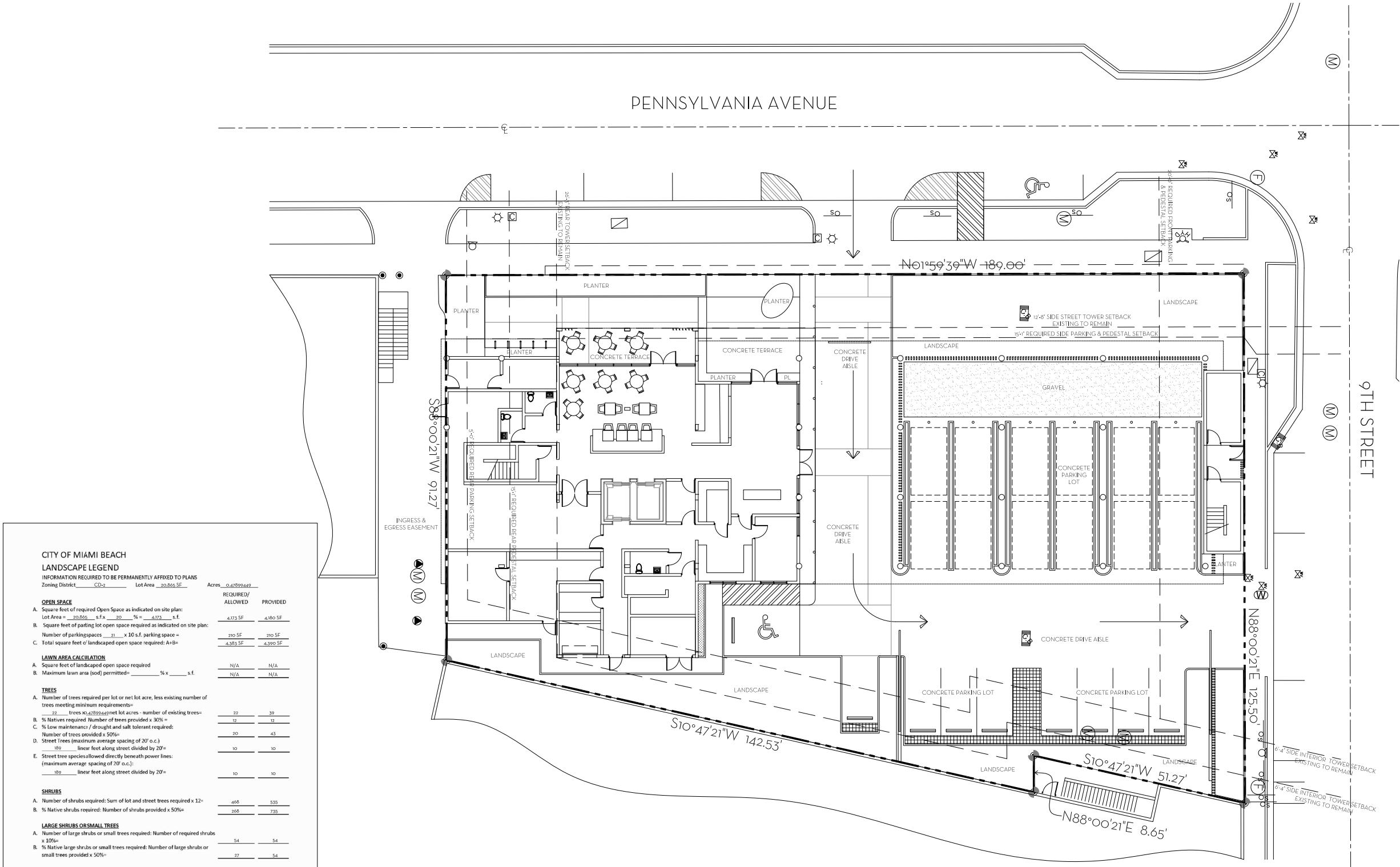


Scale = NTS

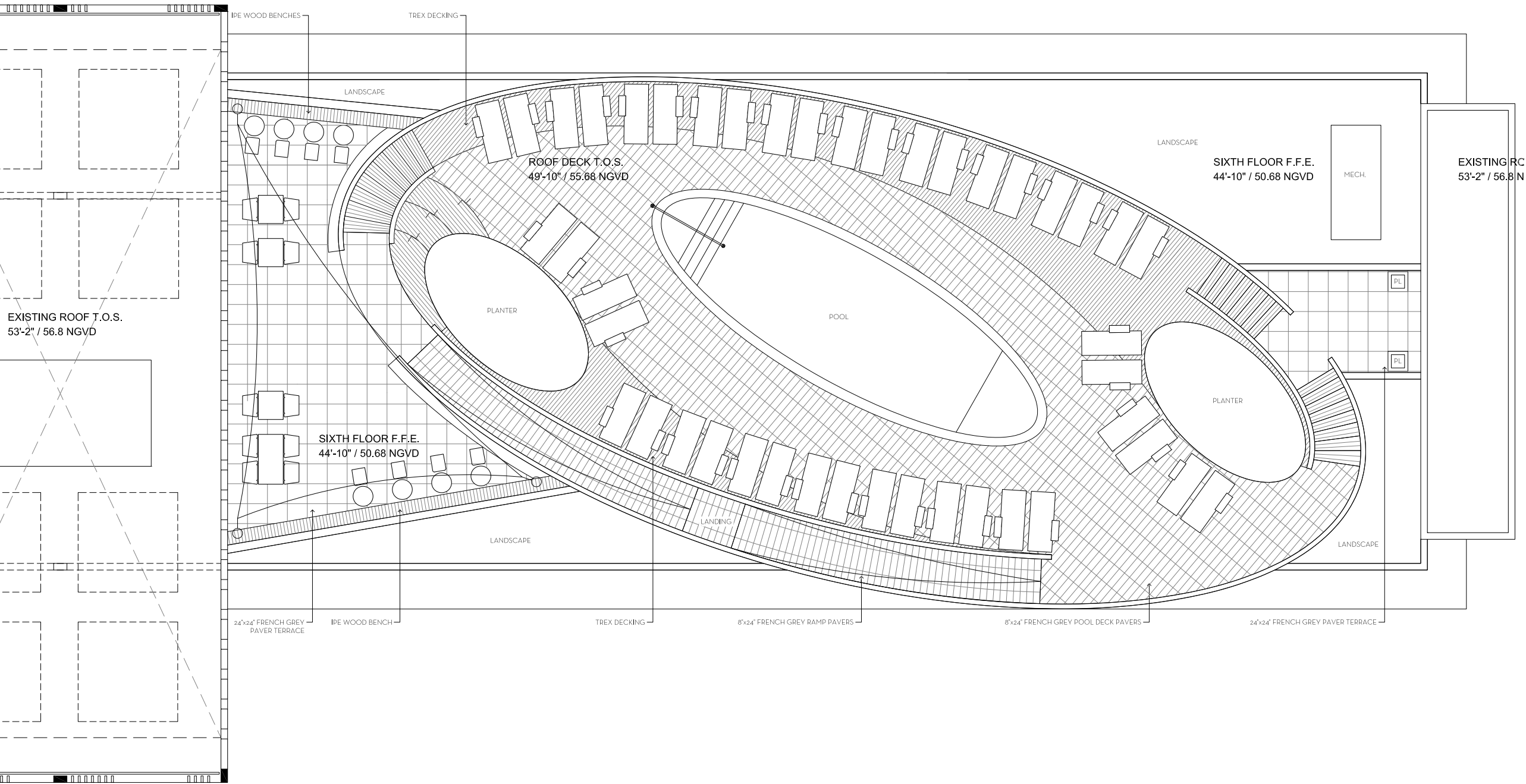
L-1.03-CONCEPTUAL RENDERING-ROOF DECK



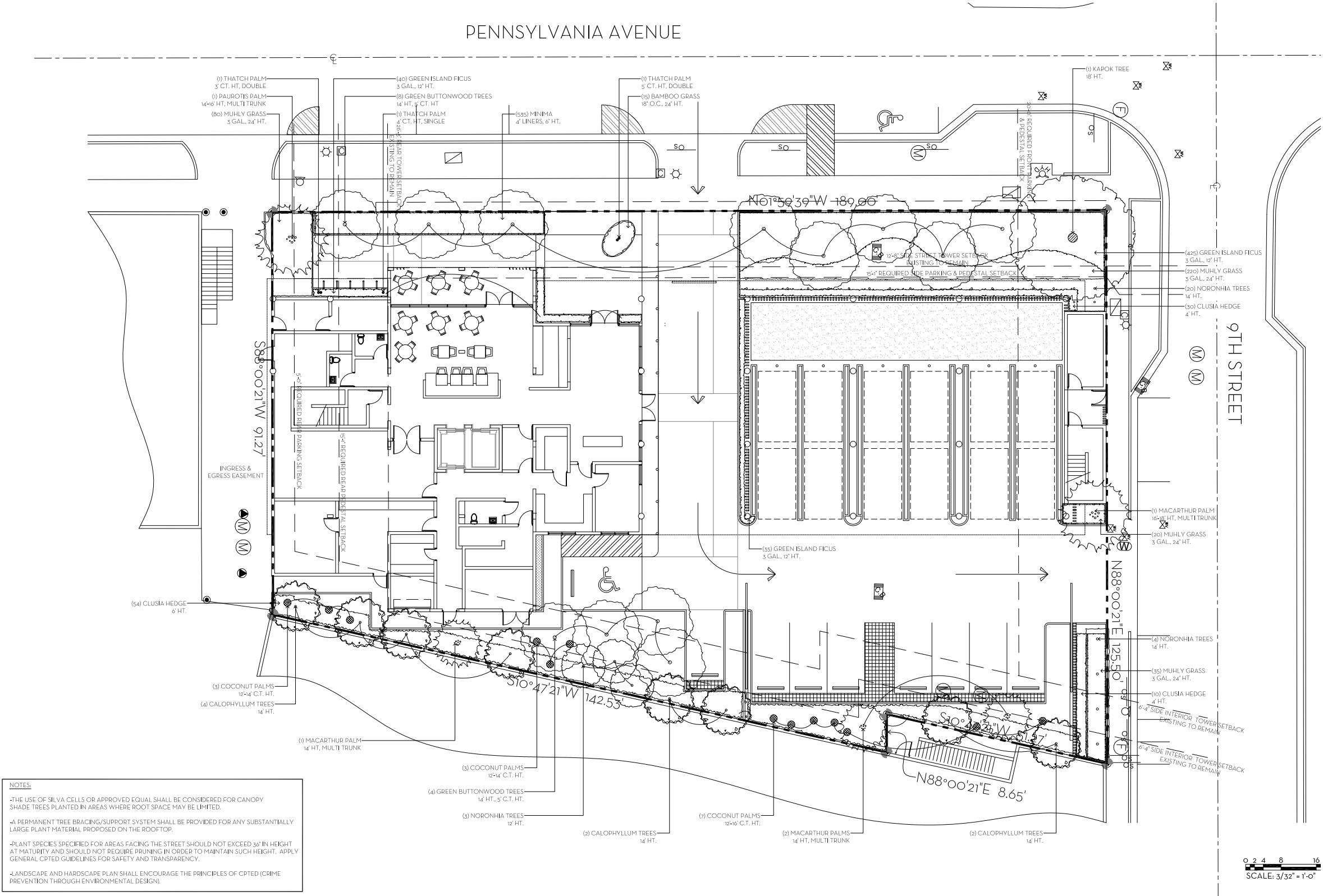
L-1.04-HARDSCAPE PLAN-FIRST FLOOR PLAN



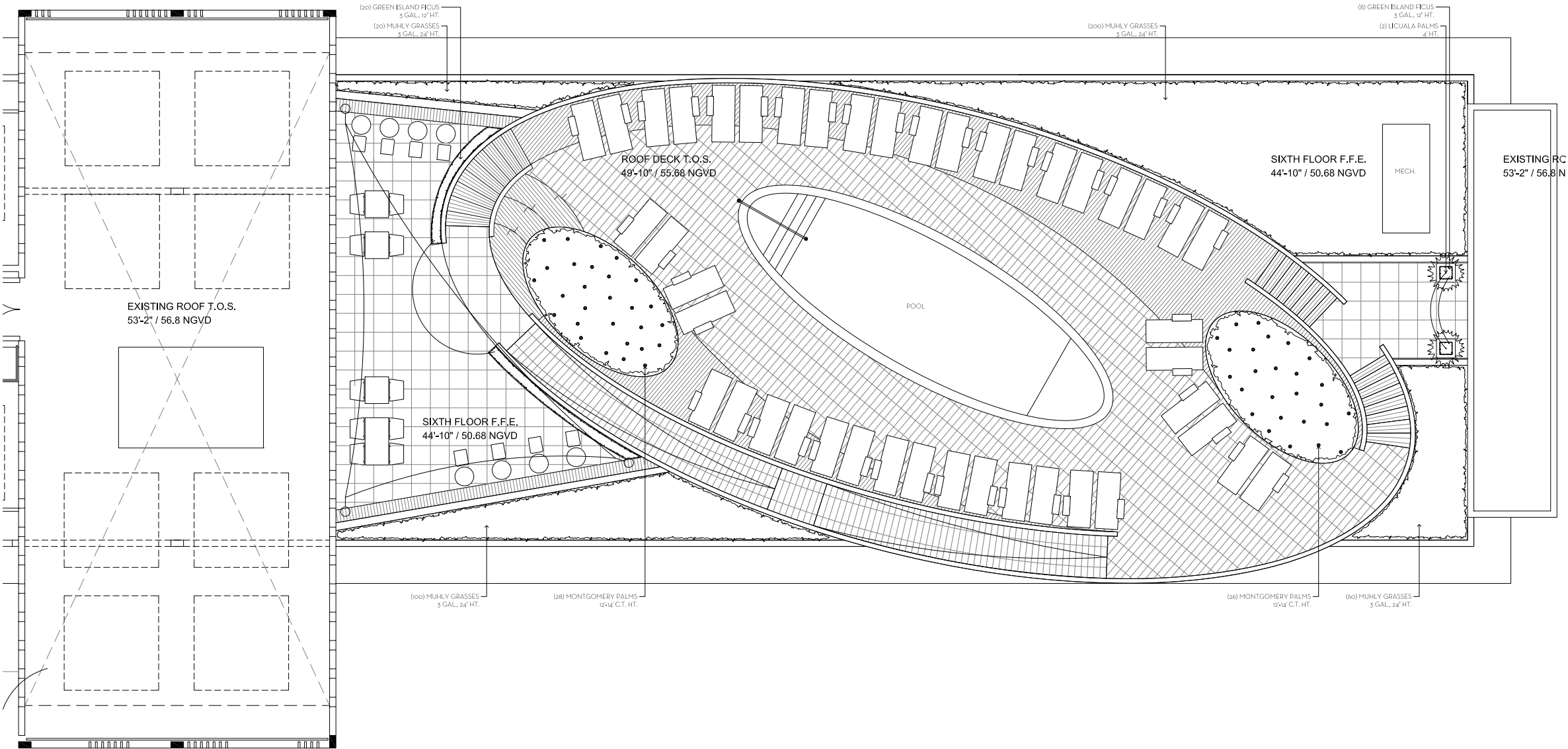
L-1.05-HARDSCAPE PLAN-ROOF DECK PLAN



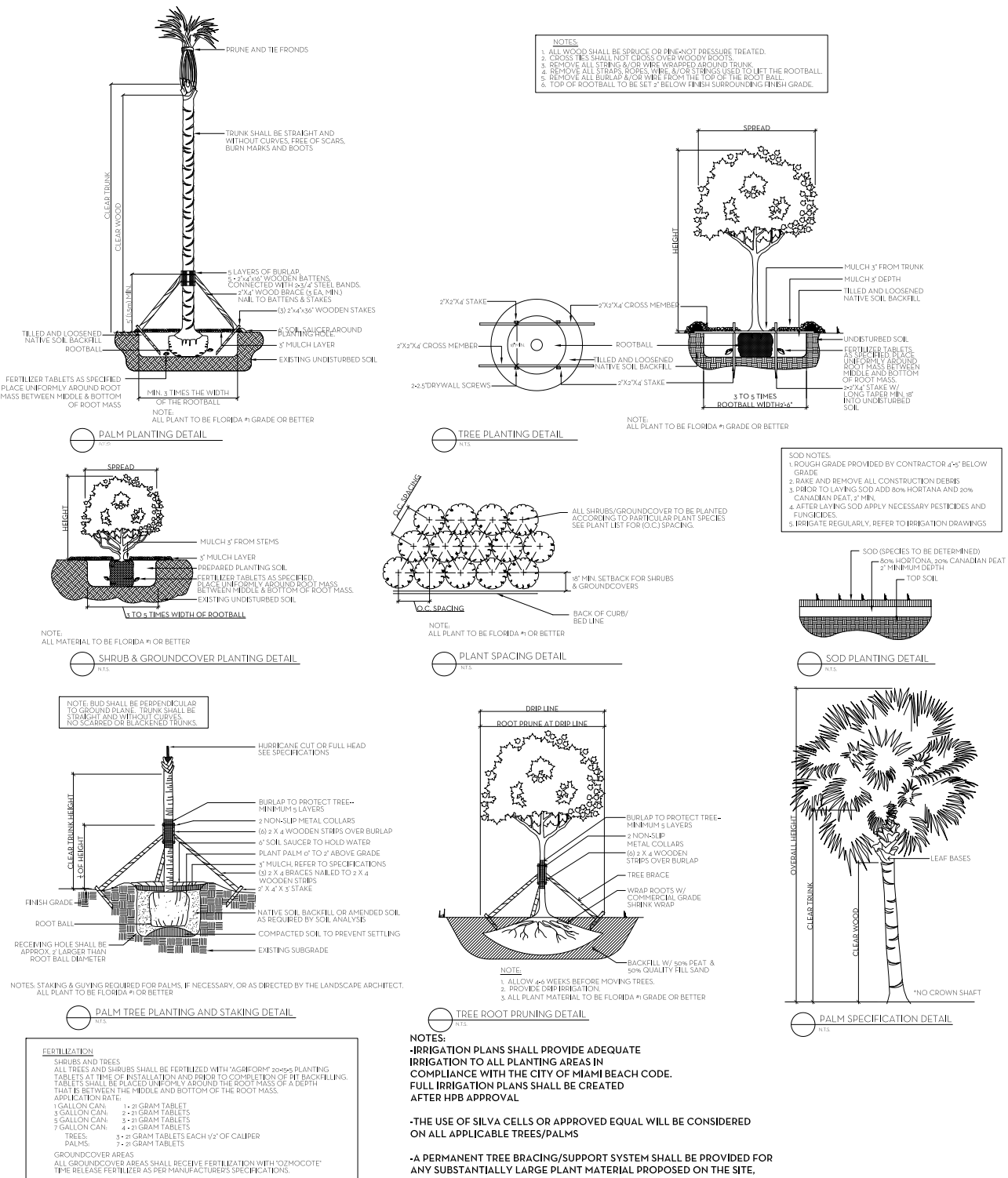
L-1.06-LANDSCAPE PLAN-FIRST FLOOR PLAN




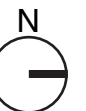
L-1.07-LANDSCAPE PLAN-ROOF DECK PLAN



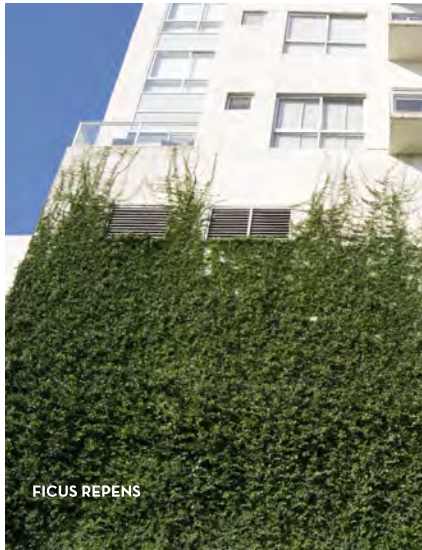
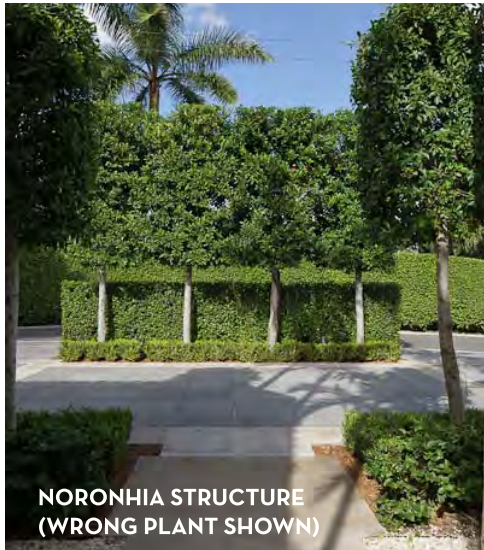
L-1.08-PLANTING DETAILS AND LEGEND

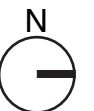
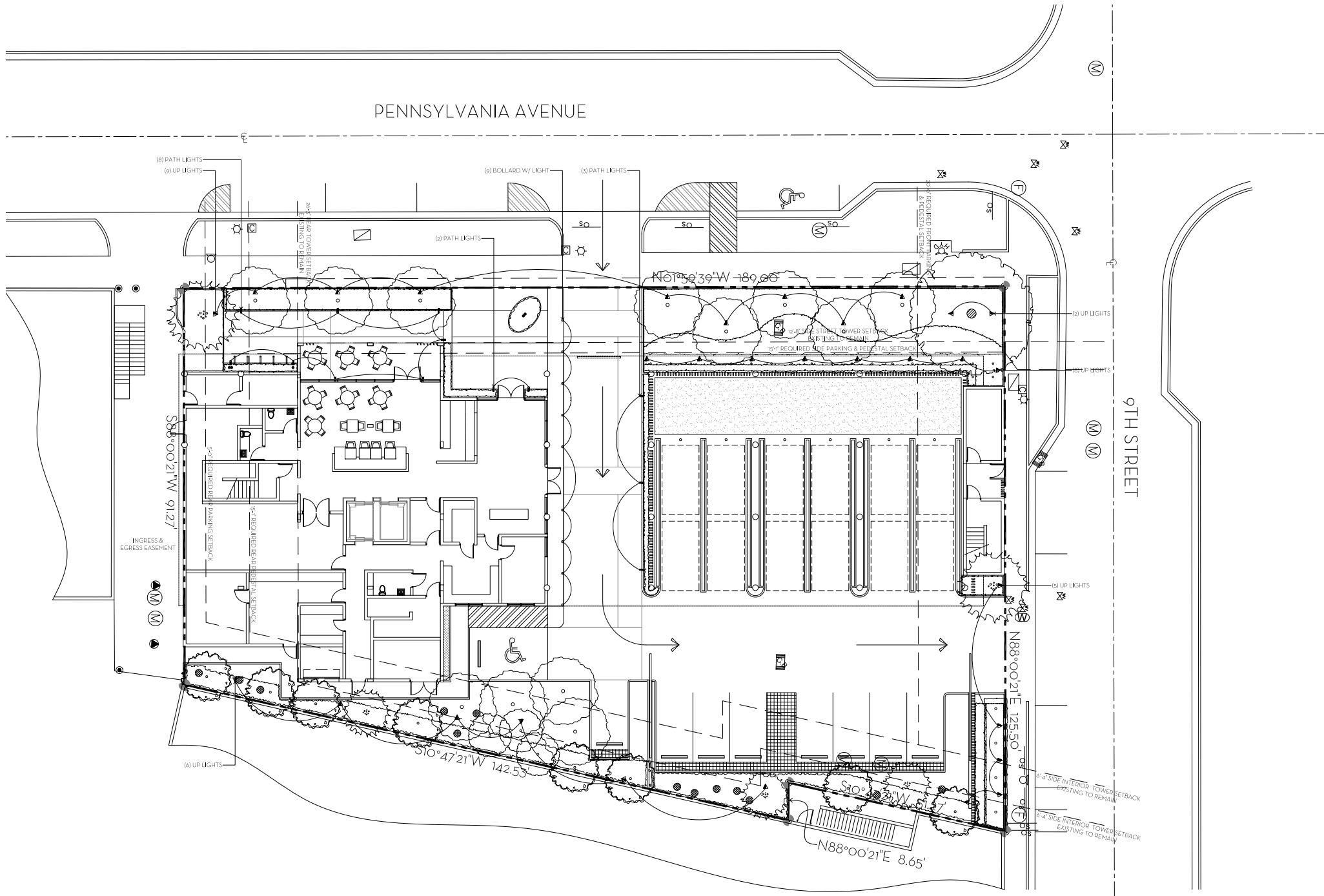


 NIEVERA WILLIAMS DESIGN	550 9th. St. Hot			
	Miami Beach, FL			
	January 7, 20			
	Plant List			
ITEM NO.	COMMON NAME	BOTANICAL NAME	QUANTITY	SPECIFICATION
TREES				
1	Calophyllum Tree	Calophyllum brasiliense	8	14' HT.
2	Green Buttonwood Tree	Conocarpus erectus	12	14' HT., 5' C.T. HT.
3	Kapok Tree	Ceiba pentandra	1	18' HT.
4	Noronhia Tree	Noronhia emarginata	3	12' HT.
5	Noronhia Tree	Noronhia emarginata	24	14' HT.
PALMS				
6	Coconut Palm	Cocos nucifera	6	12'-14' C.T. HT.
7	Coconut Palm	Cocos nucifera	7	12'-16' C.T. HT.
8	Licuala Palm	Licuala	2	4' HT.
9	Macarthur Palm	Ptychosperma macarthuri	3	14' HT., MULTI TRUNK
10	Macarthur Palm	Ptychosperma macarthuri	1	16'-18' HT., MULTI TRUNK
11	Montgomery Palm	Veitchia arecina	54	12'-14' C.T. HT.
12	Paurotis Palm	Acoelorrhaphis wrightii	1	14'-16' HT., MULTI TRUNK
13	Thatch Palm	Trinax radiata	1	5' C.T. HT., DOUBLE
14	Thatch Palm	Trinax radiata	1	4' C.T. HT., SINGLE
15	Thatch Palm	Trinax radiata	1	5' C.T. HT., DOUBLE
HEDGE / SHRUB				
16	Bamboo Grass	Pogonatherum saccharoideum	15	18' O.C., 24' HT.
17	Clusia Hedge	Clusia guttifera	40	4' HT.
18	Clusia Hedge	Clusia guttifera	54	6' HT.
19	Muhly Grass	Muhlenbergia	735	3 GAL., 24' HT.
GROUND COVER / VINES				
20	Green Island Ficus	Ficus microcarpa 'Green Island'	528	3 GAL., 12' HT.
21	Minima	Trachelospermum asiaticum 'Minima'	535	4" LINERS, 6' HT.

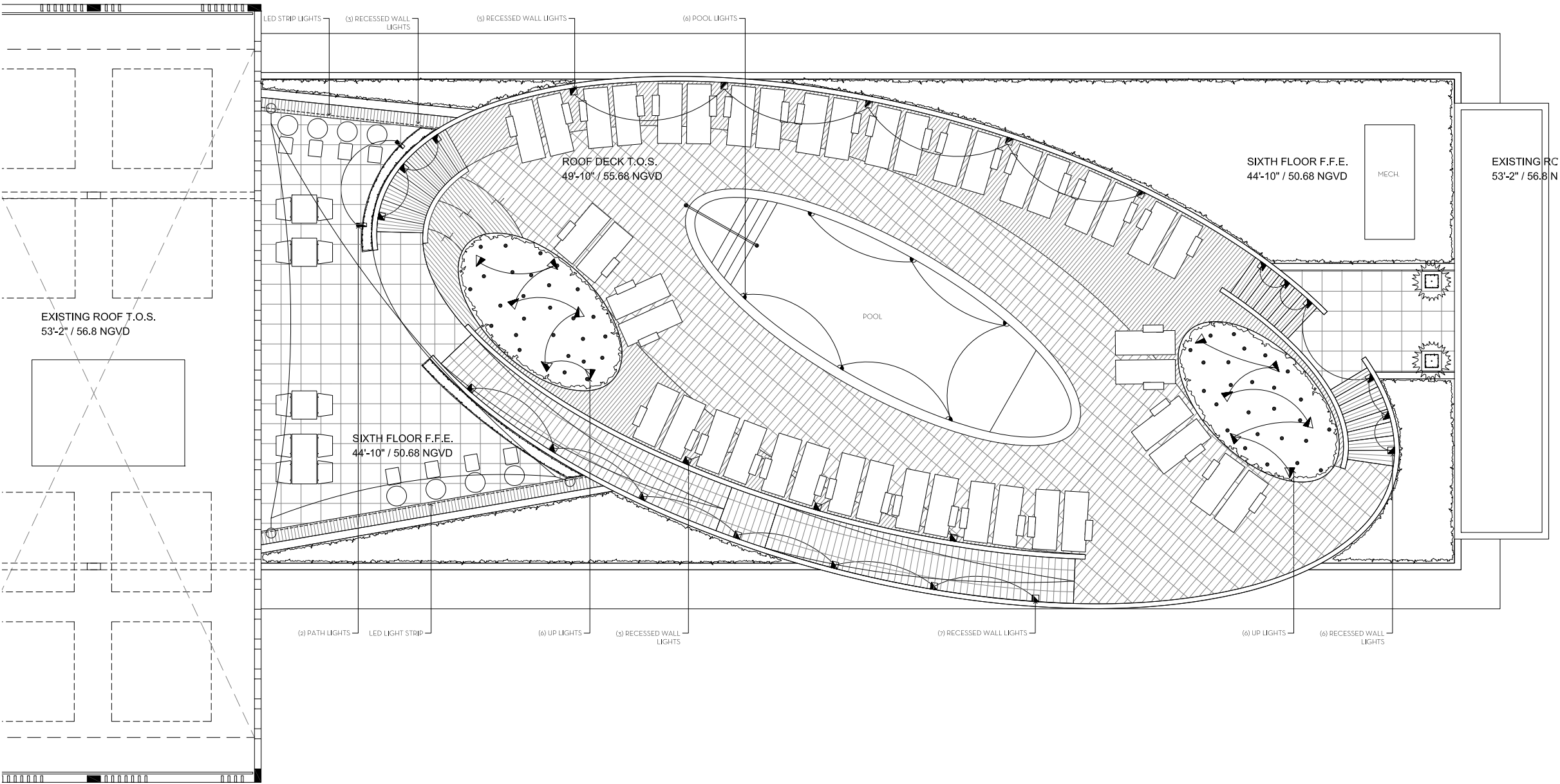


L-1.09 LANDSCAPE PLANT IMAGES






L-1.11-LANDSCAPE LIGHTING PLAN



L-1.12-LANDSCAPE LIGHTING PLAN



Model: SPJ-SQ100-1
Type: Contemporary Path Light

Forever Bright

SPECIFICATION FEATURES:

Finish: Our specially selected finishes are in limited shades of gray. All finishes are individually finished ensuring consistency. Our meticulous application results in a finish that is truly beautiful to the touch.

Electrical: Available in 12V-15V

Label: 170 Standard Wall Label
2-EL

DESCRIPTION

Model#: SPJ-SQ100-1
Material: Solid Brass
Electrical: 9-15V
Optics: FLOOD (18-30°)
Lumens: 125
Color Temp: 2700K
Mounting: 1/2" x 1/4" NPT
LED: None

ORDERING INFORMATION

Model#	Finish	Wattage	Lumens	Color Temp.	Electrical
SPJ-SQ100-1	FVDB	2W	125	2700K	9-15V

1" = 1/4" 1/4" = 1/8" 1/8" = 1/16" 1/16" = 1/32" 1/32" = 1/64" 1/64" = 1/128" 1/128" = 1/256" 1/256" = 1/512" 1/512" = 1/1024" 1/1024" = 1/2048" 1/2048" = 1/4096" 1/4096" = 1/8192" 1/8192" = 1/16384" 1/16384" = 1/32768" 1/32768" = 1/65536" 1/65536" = 1/131072" 1/131072" = 1/262144" 1/262144" = 1/524288" 1/524288" = 1/1048576" 1/1048576" = 1/2097152" 1/2097152" = 1/4194304" 1/4194304" = 1/8388608" 1/8388608" = 1/16777216" 1/16777216" = 1/33554432" 1/33554432" = 1/67108864" 1/67108864" = 1/134217728" 1/134217728" = 1/268435456" 1/268435456" = 1/536870912" 1/536870912" = 1/1073741824" 1/1073741824" = 1/2147483648" 1/2147483648" = 1/4294967296" 1/4294967296" = 1/8589934592" 1/8589934592" = 1/17179869184" 1/17179869184" = 1/34359738368" 1/34359738368" = 1/68719476736" 1/68719476736" = 1/137438953472" 1/137438953472" = 1/274877906944" 1/274877906944" = 1/549755813888" 1/549755813888" = 1/1099511627776" 1/1099511627776" = 1/2199023255552" 1/2199023255552" = 1/4398046511104" 1/4398046511104" = 1/8796093022208" 1/8796093022208" = 1/17592186044416" 1/17592186044416" = 1/35184372088832" 1/35184372088832" = 1/70368744177664" 1/70368744177664" = 1/140737488355328" 1/140737488355328" = 1/281474976710656" 1/281474976710656" = 1/562949953421312" 1/562949953421312" = 1/1125899906842624" 1/1125899906842624" = 1/2251799813685248" 1/2251799813685248" = 1/4503599627370496" 1/4503599627370496" = 1/9007199254740992" 1/9007199254740992" = 1/18014398509481984" 1/18014398509481984" = 1/36028797018963968" 1/36028797018963968" = 1/72057594037927936" 1/72057594037927936" = 1/144115188075855872" 1/144115188075855872" = 1/288230376151711744" 1/288230376151711744" = 1/576460752303423488" 1/576460752303423488" = 1/1152921504606846976" 1/1152921504606846976" = 1/2305843009213693952" 1/2305843009213693952" = 1/4611686018427387904" 1/4611686018427387904" = 1/9223372036854775808" 1/9223372036854775808" = 1/18446744073709551616" 1/18446744073709551616" = 1/36893488147419103232" 1/36893488147419103232" = 1/73786976294838206464" 1/73786976294838206464" = 1/147573952589676412928" 1/147573952589676412928" = 1/295147905179352825856" 1/295147905179352825856" = 1/590295810358705651712" 1/590295810358705651712" = 1/1180591620717411303424" 1/1180591620717411303424" = 1/2361183241434822606848" 1/2361183241434822606848" = 1/4722366482869645213696" 1/4722366482869645213696" = 1/9444732965739290427392" 1/9444732965739290427392" = 1/18889465931478580854784" 1/18889465931478580854784" = 1/37778931862957161709568" 1/37778931862957161709568" = 1/75557863725914323419136" 1/75557863725914323419136" = 1/151115727451828646838272" 1/151115727451828646838272" = 1/302231454903657293676544" 1/302231454903657293676544" = 1/604462909807314587353088" 1/604462909807314587353088" = 1/1208925819614629174706176" 1/1208925819614629174706176" = 1/2417851639229258349412352" 1/2417851639229258349412352" = 1/4835703278458516698824704" 1/4835703278458516698824704" = 1/9671406556917033397649408" 1/9671406556917033397649408" = 1/19342813113834066795298816" 1/19342813113834066795298816" = 1/38685626227668133590597632" 1/38685626227668133590597632" = 1/77371252455336267181195264" 1/77371252455336267181195264" = 1/154742504910672534362390528" 1/154742504910672534362390528" = 1/309485009821345068724781056" 1/309485009821345068724781056" = 1/618970019642690137449562112" 1/618970019642690137449562112" = 1/1237940039285380274899124224" 1/1237940039285380274899124224" = 1/2475880078570760549798248448" 1/2475880078570760549798248448" = 1/4951760157141521099596496896" 1/4951760157141521099596496896" = 1/9903520314283042199192993792" 1/9903520314283042199192993792" = 1/19807040628566084398385987584" 1/19807040628566084398385987584" = 1/39614081257132168796771975168" 1/39614081257132168796771975168" = 1/79228162514264337593543950336" 1/79228162514264337593543950336" = 1/158456325028528675187087900672" 1/158456325028528675187087900672" = 1/316912650057057350374175801344" 1/316912650057057350374175801344" = 1/633825300114114700748351602688" 1/633825300114114700748351602688" = 1/1267650600228229401496703205376" 1/1267650600228229401496703205376" = 1/2535301200456458802993406410752" 1/2535301200456458802993406410752" = 1/5070602400912917605986812821504" 1/5070602400912917605986812821504" = 1/10141204801825835211973625643008" 1/10141204801825835211973625643008" = 1/20282409603651670423947251286016" 1/20282409603651670423947251286016" = 1/40564819207303340847894502572032" 1/40564819207303340847894502572032" = 1/81129638414606681695789005144064" 1/81129638414606681695789005144064" = 1/162259276829213363391778010288128" 1/162259276829213363391778010288128" = 1/324518553658426726783556020576256" 1/324518553658426726783556020576256" = 1/649037107316853453567112041152512" 1/649037107316853453567112041152512" = 1/1298074214633706907134224082305024" 1/1298074214633706907134224082305024" = 1/2596148429267413814268448164610048" 1/2596148429267413814268448164610048" = 1/5192296858534827628536896329220096" 1/5192296858534827628536896329220096" = 1/10384593717069655257073792658440192" 1/10384593717069655257073792658440192" = 1/20769187434139310514147585316880384" 1/20769187434139310514147585316880384" = 1/41538374868278621028295170633760768" 1/41538374868278621028295170633760768" = 1/83076749736557242056590341267521536" 1/83076749736557242056590341267521536" = 1/166153499473114484113180682535043072" 1/166153499473114484113180682535043072" = 1/332306998946228968226361365070086144" 1/332306998946228968226361365070086144" = 1/664613997892457936452722730140172288" 1/664613997892457936452722730140172288" = 1/1329227995784915872905445460280344576" 1/1329227995784915872905445460280344576" = 1/2658455991569831745810890920560689152" 1/2658455991569831745810890920560689152" = 1/5316911983139663491621781841121378304" 1/5316911983139663491621781841121378304" = 1/10633823966279326983243563682242756608" 1/10633823966279326983243563682242756608" = 1/21267647932558653966487127364485513216" 1/21267647932558653966487127364485513216" = 1/42535295865117307932974254728971026432" 1/42535295865117307932974254728971026432" = 1/85070591730234615865948509457942052864" 1/85070591730234615865948509457942052864" = 1/170141183460469231731897018915884105728" 1/170141183460469231731897018915884105728" = 1/340282366920938463463794037831768211456" 1/340282366920938463463794037831768211456" = 1/680564733841876926927588075663536422912" 1/680564733841876926927588075663536422912" = 1/1361129467683753853855176151327072845824" 1/1361129467683753853855176151327072845824" = 1/272225893536750770771035230265414569152" 1/272225893536750770771035230265414569152" = 1/544451787073501541542070460530829138304" 1/544451787073501541542070460530829138304" = 1/1088903574147003083084140921061658276608" 1/1088903574147003083084140921061658276608" = 1/2177807148294006166168281842123316553216" 1/2177807148294006166168281842123316553216" = 1/4355614296588012332336563684246633106432" 1/4355614296588012332336563684246633106432" = 1/8711228593176024664673127368493266212864" 1/8711228593176024664673127368493266212864" = 1/17422457186352049329346254736986532425728" 1/17422457186352049329346254736986532425728" = 1/34844914372704098658692509473973064851456" 1/34844914372704098658692509473973064851456" = 1/69689828745408197317385018947946129702912" 1/69689828745408197317385018947946129702912" = 1/139379657490816394634770037895932259405824" 1/139379657490816394634770037895932259405824" = 1/278759314981632789269540075791864518811648" 1/278759314981632789269540075791864518811648" = 1/557518629963265578539080151583729037623296" 1/557518629963265578539080151583729037623296" = 1/1115037259926531157078160303167458075246592" 1/1115037259926531157078160303167458075246592" = 1/2230074519853062314156320606334916150493184" 1/2230074519853062314156320606334916150493184" = 1/4460149039706124628312641212669832300986368" 1/4460149039706124628312641212669832300986368" = 1/8920298079412249256625282425339664601972736" 1/8920298079412249256625282425339664601972736" = 1/17840596158824498513250564850679329203945472" 1/17840596158824498513250564850679329203945472" = 1/35681192317648997026501129701358658407890944" 1/35681192317648997026501129701358658407890944" = 1/71362384635297994053002259402717316815781888" 1/71362384635297994053002259402717316815781888" = 1/142724769270595988106004518805434633631563776" 1/142724769270595988106004518805434633631563776" = 1/285449538541191976212009037610869267263127552" 1/285449538541191976212009037610869267263127552" = 1/57089907708238395242401807522173853452625504" 1/57089907708238395242401807522173853452625504" = 1/114179815416476790484803615044347706905251008" 1/114179815416476790484803615044347706905251008" = 1/228359630832953580969607230088695413810502016" 1/228359630832953580969607230088695413810502016" = 1/456719261665907161939214460177390827621004032" 1/456719261665907161939214460177390827621004032" = 1/913438523331814323878428920354781655242008064" 1/913438523331814323878428920354781655242008064" = 1/1826877046663628647756857840709563310484016128" 1/1826877046663628647756857840709563310484016128" = 1/3653754093327257295513715681419126620968032256" 1/3653754093327257295513715681419126620968032256" = 1/7307508186654514591027431362838253241936064512" 1/7307508186654514591027431362838253241936064512" = 1/14615016373309029182054862725676506483872129024" 1/14615016373309029182054862725676506483872129024" = 1/29230032746618058364109725451353012967744258048" 1/29230032746618058364109725451353012967744258048" = 1/58460065493236116728219450902706025935488516096" 1/58460065493236116728219450902706025935488516096" = 1/116920130986472233456438901805412051870977032192" 1/116920130986472233456438901805412051870977032192" = 1/233840261972944466912877803610824103741954064384" 1/233840261972944466912877803610824103741954064384" = 1/467680523945888933825755607221648207483908128768" 1/467680523945888933825755607221648207483908128768" = 1/935361047891777867651511214443296414967816257536" 1/935361047891777867651511214443296414967816257536" = 1/1870722095783555735303022428886592829935632515072" 1/1870722095783555735303022428886592829935632515072" = 1/3741444191567111470606044857773185659871265030144" 1/3741444191567111470606044857773185659871265030144" = 1/7482888383134222941212089715546371319742530060288" 1/7482888383134222941212089715546371319742530060288" = 1/14965776766268445882424178431092742639485060120576" 1/14965776766268445882424178431092742639485060120576" = 1/29931553532536891764848356862185485278970120241152" 1/29931553532536891764848356862185485278970120241152" = 1/59863107065073783529696713724370970557940240482304" 1/59863107065073783529696713724370970557940240482304" = 1/119726214130147567059393427448741941115880480964608" 1/119726214130147567059393427448741941115880480964608" = 1/239452428260295134118786854897483882231760961929216" 1/239452428260295134118786854897483882231760961929216" = 1/478904856520590268237573709794967764463521923858432" 1/478904856520590268237573709794967764463521923858432" = 1/957809713041180536475147419589935528927043847716864" 1/957809713041180536475147419589935528927043847716864" = 1/1915619426082361072950294839179871057854087695433728" 1/1915619426082361072950294839179871057854087695433728" = 1/3831238852164722145900589678359742115708175390867456" 1/3831238852164722145900589678359742115708175390867456" = 1/7662477704329444291801179356719484231416350781734912" 1/7662477704329444291801179356719484231416350781734912" = 1/15324955408658888583602358713438968462832701563469824" 1/15324955408658888583602358713438968462832701563469824" = 1/30649910817317777167204717426877936925665403126939648" 1/30649910817317777167204717426877936925665403126939648" = 1/61299821634635554334409434853755873851330806253879296" 1/61299821634635554334409434853755873851330806253879296" = 1/122599643269271108668818869707511747702661612507758592" 1/122599643269271108668818869707511747702661612507758592" = 1/245199286538542217337637739415023495405323225015517184" 1/245199286