

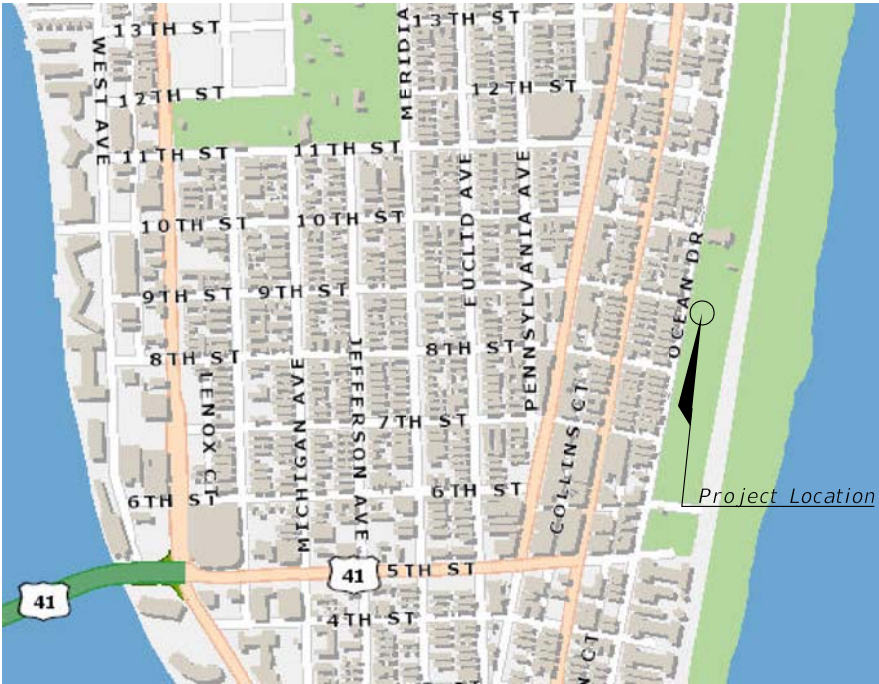
TOPOGRAPHIC SURVEY
OF
LUMMUS PARK

CITY OF MIAMI BEACH
MIAMI DADE COUNTY
STATE ROAD NO. A1A

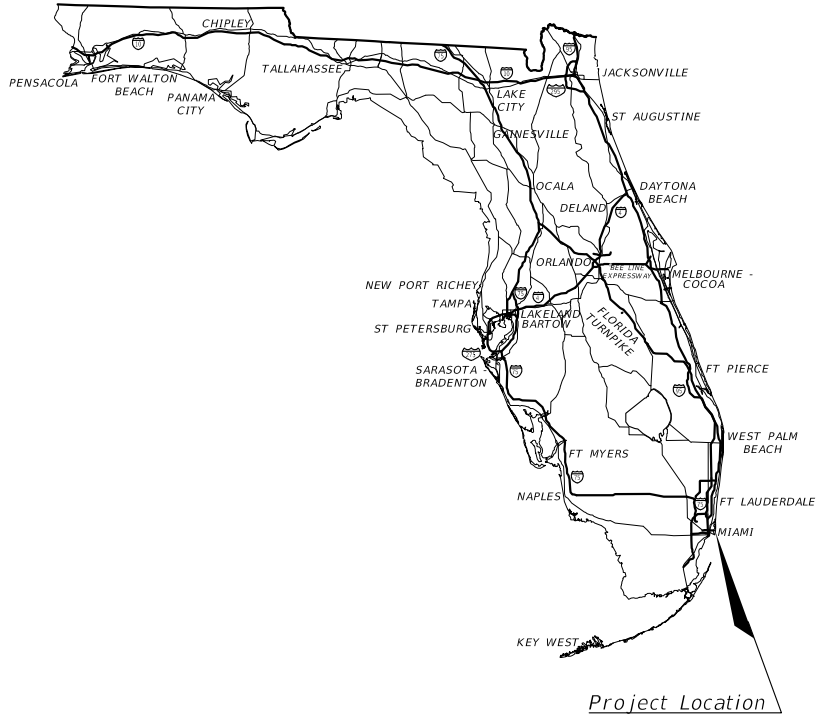
FOR BCC ENGINEERING

LEGEND

- BOTT = BOTTOM
CONC. = CONCRETE
C.L.F. = CHAIN LINK FENCE
C.B.S. = CONCRETE BLOCK & STUCCO
C.M.P. = CORRUGATED METAL PIPE
C = CENTERLINE
ELEV. = ELEVATION
F.L.P.D. = FUEL LOW POINT DRAIN
Δ = DELTA
FDOT = FLORIDA DEPARTMENT OF TRANSPORTATION
FPRN = FLORIDA PERMANENT REFERENCE NETWORK
FND = FOUND
SEC. = SECTION
LB = LICENSED BUSINESS
NAVD = NORTH AMERICAN VERTICAL DATUM
N.T.S. = NOT TO SCALE
NL&W. = NAIL & WASHER
PNC = POINT NETWORK CONTROL
PG. = PAGE
P.B. = PLAT BOOK
P.I. = POINT OF INTERSECTION
PK = PARKER KALON
PNC = PROJECT NETWORK CONTROL
PSM = PROFESSIONAL SURVEYOR & MAPPER
R/W = RIGHT OF WAY
STA. = STATION
S.R. = STATE ROAD
8.01 x = SPOT ELEVATION
O.R.B. = OFFICIAL RECORD BOOK
Ch.I.f. = CHAIN LINK FENCE
TWP. = TOWNSHIP
RG. = RANGE
R.R. = RAIL ROAD
TB.M. = TEMPORAL BENCH MARK
Inv. = INVERT
EL. = ELEVATION
PVC = POLY
R = RADIUS
Δ = CENTRAL ANGLE
L = LENGTH
T.O.P. = TOP OF PIPE
T.O.C. = TOP OF CAP
— = SIDEWALK (FRONTS)
— = CONCRETE PAVEMENT (EDGES)
— = FENCE (GENERIC)
— = WALLS
— = BENCHES, BUS STOP SHELTERS
— = STREET LIGHT / POLE
— = MANHOLE (STORM WATER)
— = MISCELLANEOUS TOPO/TEXT
— = TREE
— = PALM TREE
— = VALVE COVER
— = WIRING PULL BOX
— = SINGLE SUPPORT SIGN
— = WATER VALVE COVER
— = PEDESTRIAN SIGNAL
— = EQUIPMENT POST
— = GUARD POST



LOCATION SKETCH
Not to Scale



SURVEYOR'S NOTES:

- THIS IS NOT A BOUNDARY SURVEY.
- COORDINATES AND BEARINGS ARE BASED ON THE STATE PLANE COORDINATE SYSTEM, FLORIDA EAST ZONE, NORTH AMERICAN DATUM OF 1983, ADJUSTMENT OF 2011 AS DEFINED BY THE FPRN CONTROL STATION: "MIAMI BEACH"
- ELEVATIONS REFER TO THE NATIONAL GEODETIC VERTICAL DATUM OF 1929 (NGVD29) AND DETERMINED FROM MIAMI DADE WATER AND SEWER DEPARTMENT (MDWASD) CONTROL STATION "FERRE", ELEVATION 4.16'
- THESE MEASUREMENTS AND EXAMINATIONS WERE PERFORMED UNDER MY DIRECT SUPERVISION AND IN MY PROFESSIONAL JUDGEMENT, EVERY ATTEMPT WAS MADE TO LOCATE THE DATA IN QUESTION USING THE STANDARD OF CARE FOR SURVEYING AND MAPPING IN THESE MATTERS, SUBJECT TO THE LIMITATIONS AS SET FORTH IN THIS SURVEY MAP AND REPORT.
- NO BOUNDARY OR RIGHT OF WAY SURVEYS WERE PERFORMED BY M.G. VERA & ASSOC., INC (MGV) TO ESTABLISH THE RIGHT OF WAY LIMITS.
- NO EXCAVATION WAS MADE AS TO SHOW THE SUBJECT PROPERTY IS SERVED BY UTILITIES. SUBSURFACE UTILITIES, INCLUDING, BUT WITHOUT LIMITATION TO PIPES, WIRES, VAULTS, BOXES, DRAIN TILES, VOIDS, CABLES AND OTHER MATERIALS ANCILLARY TO THE DELIVERY AND/OR DISPOSAL OF WATER, WASTEWATER, SEWAGE, ELECTRICITY, GAS, TELEPHONE SERVICE, CABLE TELEVISION OR AS THEY MAY EXIST WITHIN, UPON, ACROSS OR ABUTTING THE SUBJECT PROPERTY WERE NOT PHYSICALLY LOCATED. OTHER SUBSURFACE STRUCTURES AS THEY MAY EXIST WITHIN, UPON, ACROSS OR ABUTTING THE SUBJECT PROPERTY WERE NOT LOCATED UNLESS OTHERWISE SHOWN ON THE SURVEY MAP OR ACCOUNTED FOR IN THE PRECEDING STATEMENT OF THIS SECTION. THIS NOTICE IS REQUIRED BY THE "STANDARDS OF PRACTICE FOR LAND SURVEYING IN THE STATE OF FLORIDA", PURSUANT TO RULE 5J-17 OF THE FLORIDA ADMINISTRATIVE CODE.
- EROSION CONTROL LINE SHOWN AS PER MIAMI-DADE COUNTY PLAT OF RECORDS P.B. 105-PG. 62 (SHEETS 4 & 6)
- NO BULKHEAD LINE EXISTS WITHIN THE LIMITS OF THIS SURVEY AS SHOWN ON P.B. 74-PG. 4
- LAST DAY OF FIELD WORK WAS ON DECEMBER 8TH, 2018.
- NO ATTEMPT HAS BEEN MADE TO LOCATE ANY UNDERGROUND ENCROACHMENTS.

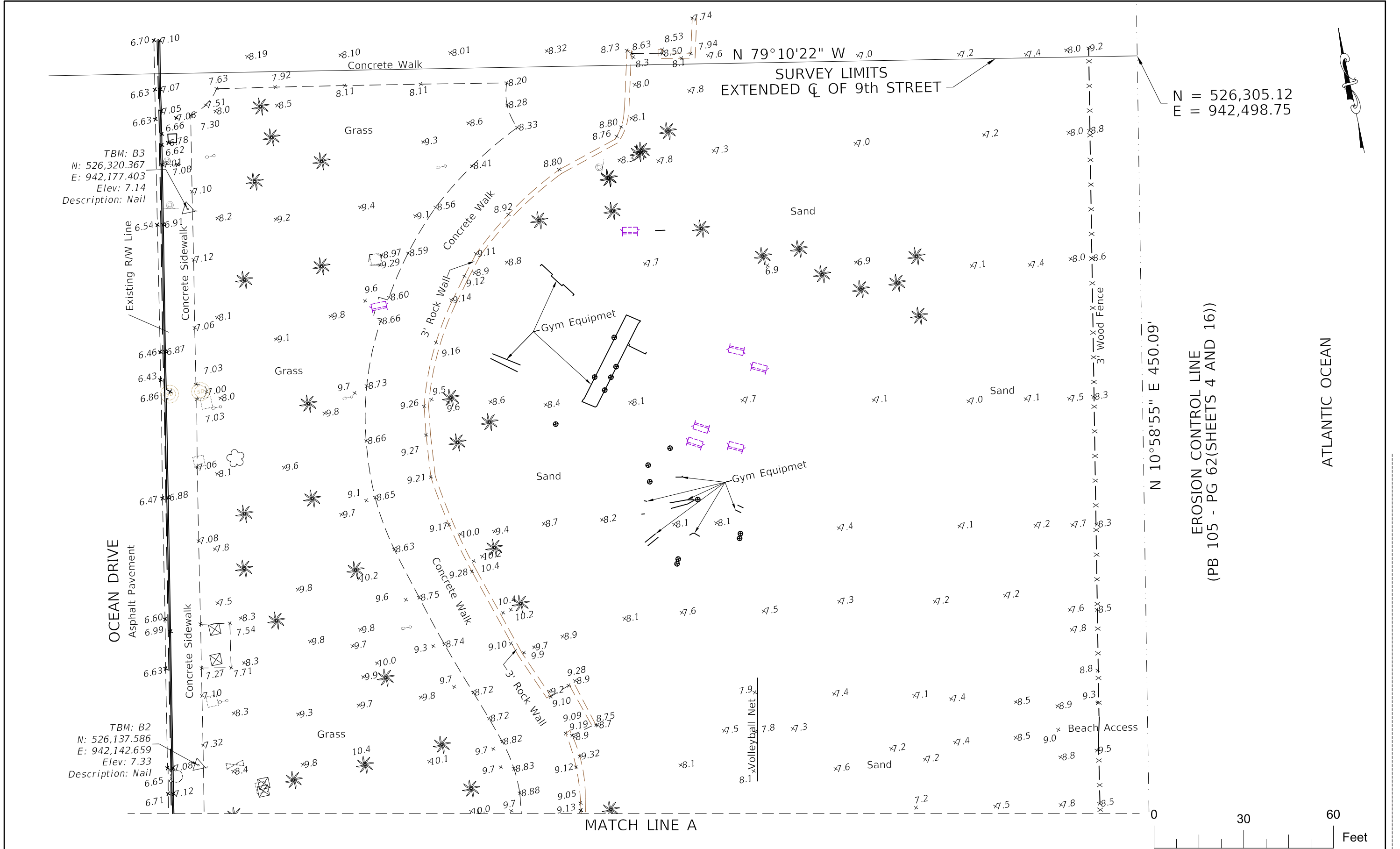
CERTIFICATION:

I HEREBY CERTIFY THAT THIS TOPOGRAPHIC SURVEY MEETS ALL APPLICABLE REQUIREMENTS OF THE FLORIDA STANDARDS OF PRACTICE CONTAINED IN CHAPTER 5J-17 OF THE FLORIDA ADMINISTRATIVE CODE.

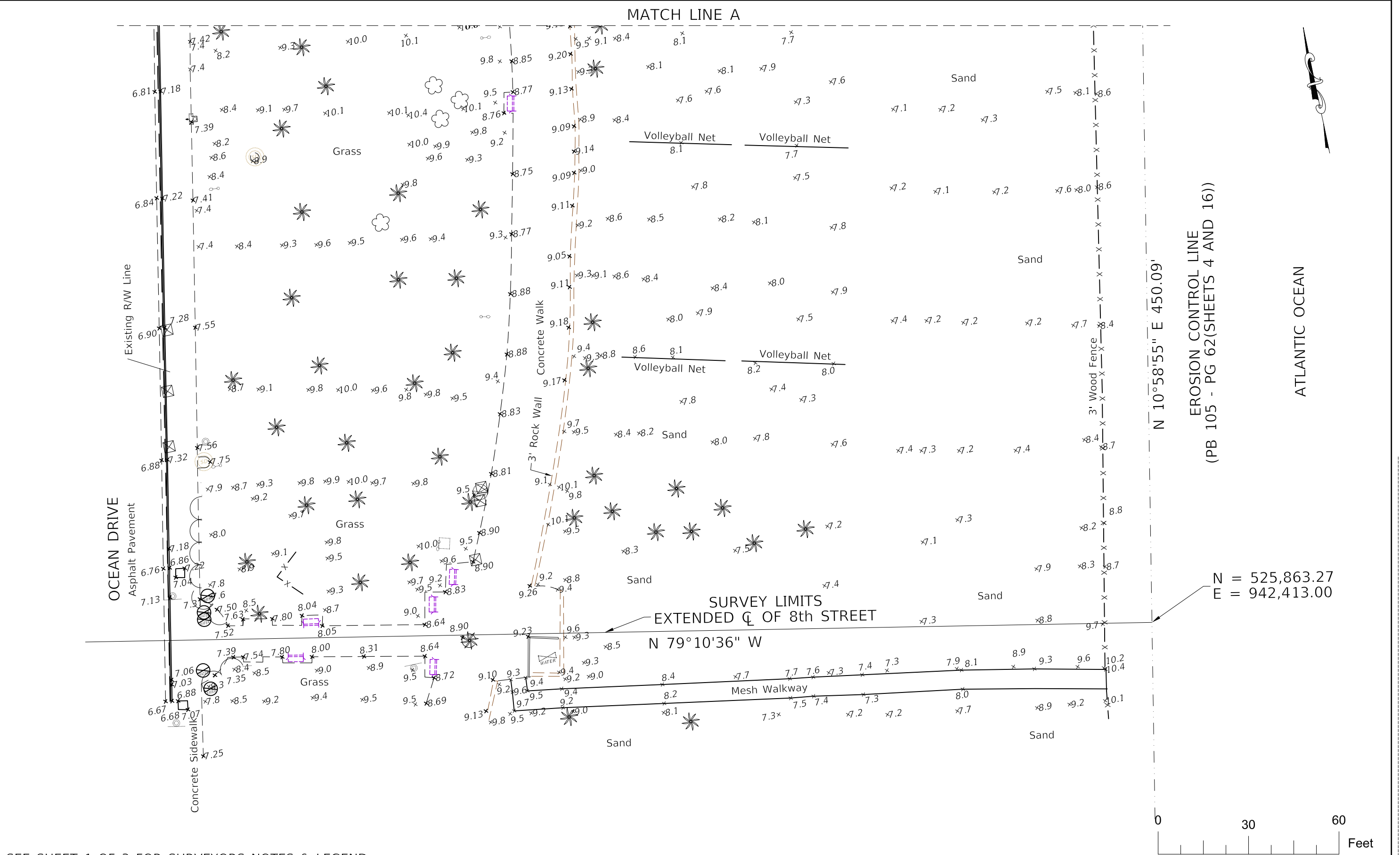
CARLOS E. ALONSO PSM #6669

MANUEL G. VERA & ASSOCIATES INC. L.B.2439
STATE OF FLORIDA
NOT VALID WITHOUT THE SIGNATURE AND THE ORIGINAL RAISED SEAL
OF A FLORIDA LICENSED SURVEYOR AND MAPPER.



PROJECT NO.	SHEET NO.
18-695	1 of 3



REVISIONS				TOPOGRAPHIC SURVEY			SHEET NO.
DATE	DESCRIPTION	DATE	DESCRIPTION				
---	---	---	---	ROAD NO.	COUNTY	PROJECT NO.	2 of 3
				A1A	MIAMI-DADE	18695	
<div><div></div><div>MANUEL G. VERA & ASSOCIATES, INC.</div><div>ENGINEERS • SURVEYORS • MAPPERS</div><div>13960 SW 47th Street • Miami, FL 33175 • Phone (305) 221-6210</div><div>P.O. BOX 650578 • Miami, FL 33265 • Fax (305) 221-1295</div><div>www.mgvera.com</div></div>				<div>LUMMUS PARK</div>			2 of 3



SEE SHEET 1 OF 3 FOR SURVEYORS NOTES & LEGEND

R E V I S I O N S				TOPOGRAPHIC SURVEY			LUMMUS PARK	SHEET NO.
DATE	DESCRIPTION	DATE	DESCRIPTION		ROAD NO.	COUNTY		PROJECT NO.
---	---				A1A	MIAMI-DADE		18695
<div><div></div><div>MANUEL G. VERA & ASSOCIATES, INC. ENGINEERS • SURVEYORS • MAPPERS</div><div>13960 SW 47th Street • Miami, FL 33175 • Phone (305)221-6210 P.O. BOX 650578 • Miami, FL 33265 • Fax (305)221-1295 www.mgvera.com</div></div>							3 of 3	