

TYLER: REAR LOBBY: 1999

COURTYARD ENTRANCE

Connecting through to the main lobby entered from 21st Street is this charming semi-circular glazed room with glass doors leading to the interior-of-block garden.

Unfortunately this graceful decorative stair does not qualify as a legal means of egress from the second and third floors above since it does not provide a protected egressway.

Talks with the City of Miami Beach Fire Marshall back in 2003 centered on providing an alternative enclosed interior egressway to a new protected means of egress from the second floor above.





TYLER: ENTRANCE DETAILS 1999



TYLER (left) and LORD CHARLES (right) 2012



TYLER: TERRAZZO ENTRANCE MEDALLION 1999

TYLER: HISTORY 1999



TYLER: ACCESSIBLE ROOFDECK 1999



ADAMS (left), TYLER (middle), LORD CHARLES (right) May, 2012

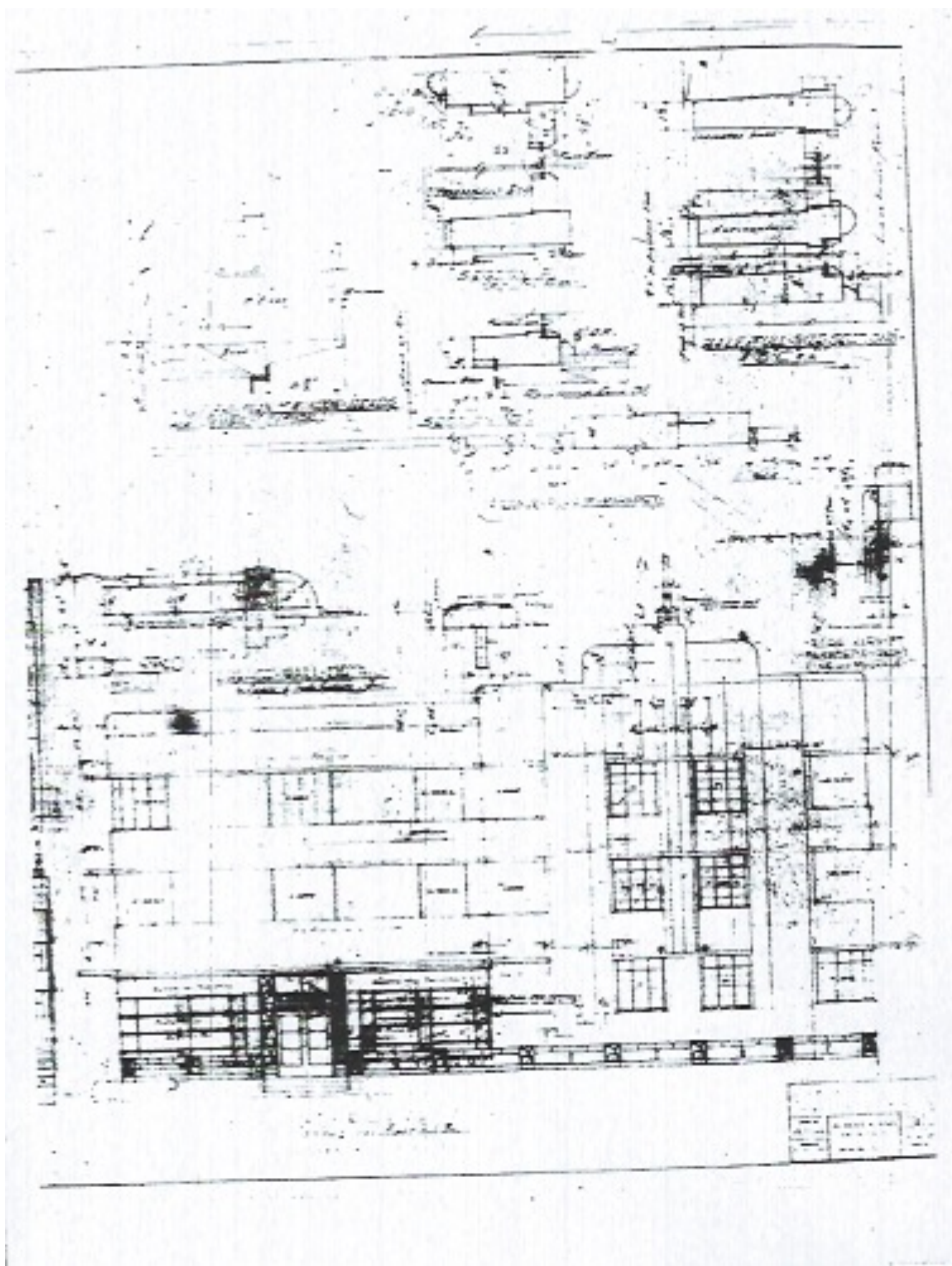
TYLER: 2012



TYLER: STREET VIEW MAY, 2012



TYLER: FIRE DAMAGE MAY, 2012



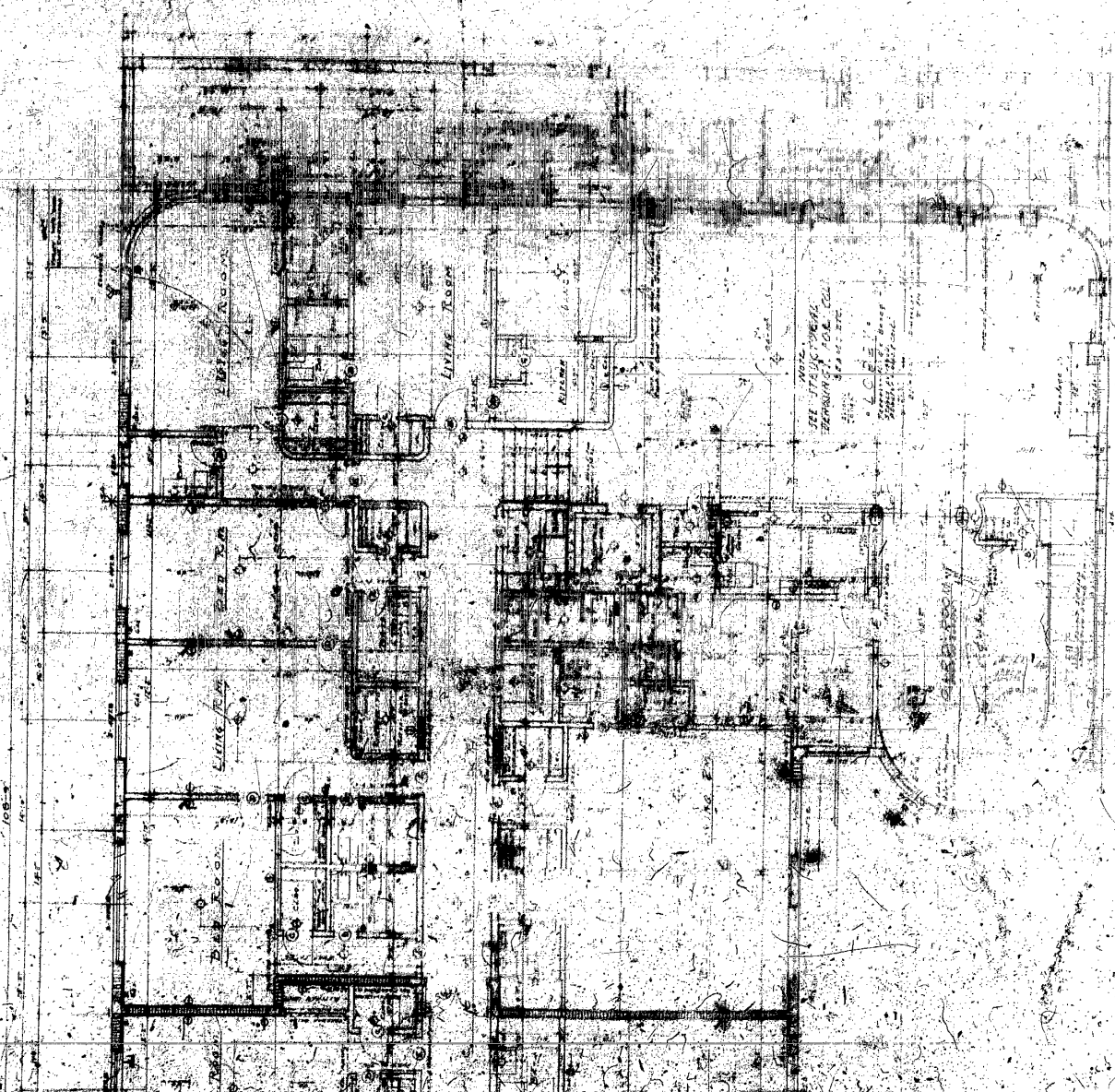
TYLER: ORIGINAL ARCHITECTURAL DRAWINGS

ALBERT ANIS ARCHITECT

FRONT ELEVATION ALONG 21st STREET

FROM CITY of MIAMI BEACH RECORDS SEARCH 5.17.12

www.arthurmarcus.com

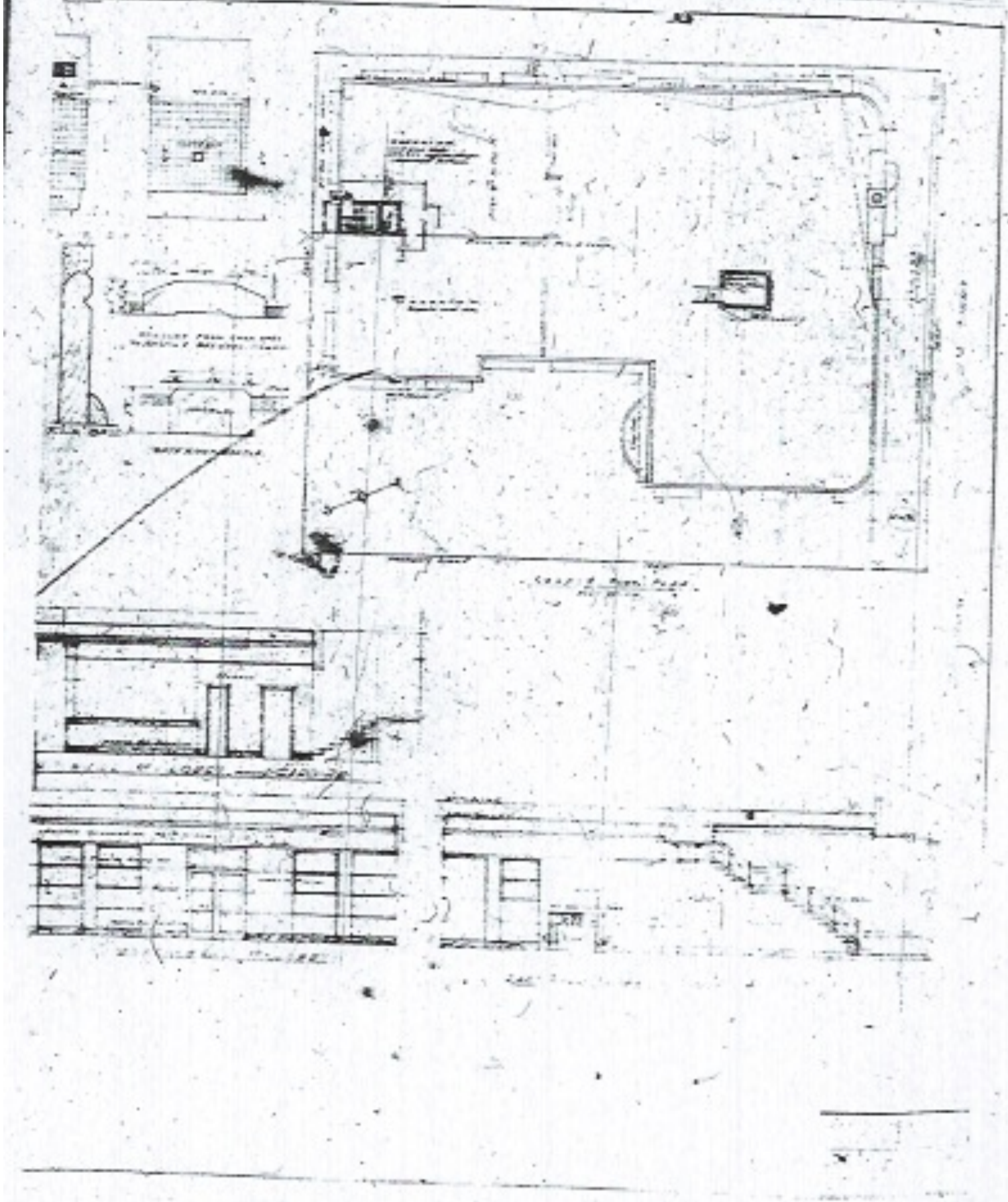


TYLER: ORIGINAL ARCHITECTURAL DRAWINGS

ALBERT ANIS ARCHITECT

FIRST FLOOR PLAN -NORTHERN PORTION

FROM CITY of MIAMI BEACH RECORDS SEARCH 5.17.12



TYLER: ORIGINAL ARCHITECTURAL DRAWINGS

ALBERT ANIS ARCHITECT

ROOF PLAN + FIRST FLOOR LOBBY ELEVATIONS

FROM CITY of MIAMI BEACH RECORDS SEARCH 5.17.12