



Q (04/17/2018) EXISTING BEACH ACCESS
Scale: N.T.S.



R (04/17/2018) EXISTING FIRE STATION PARKING REAR VIEW 2/2
Scale: N.T.S.



S (04/17/2018) EXISTING TOILETS AND OCEAN RESCUE BUILDING
Scale: N.T.S.

REVISIONS / SUBMISSIONS

1818

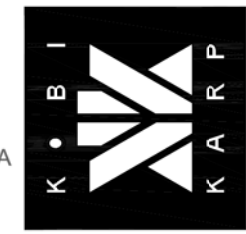
ALL DRAWINGS AND WRITTEN MATERIAL APPEARING HEREIN CONSTITUTE THE ORIGINAL AND UNPUBLISHED WORK OF KOBI KARP AND MAY NOT BE REPRODUCED OR TRANSMITTED IN ANY FORM OR BY ANY MEANS, WITHOUT THE EXPRESS WRITTEN CONSENT OF KOBI KARP ARCHITECTURE & INTERIOR DESIGN, INC. IN 2018.

SABRINA COHEN FOUNDATION
5301 COLLINS AVE., MIAMI BEACH, FL 33140
CONTEXT IMAGES



KOBI KARP
Lic. # AR0012578

ARCHITECTURE
INTERIOR DESIGN
PLANNING
AIA ASID NCARB
2916 Brickyard Boulevard
Miami, Florida 33137
C: 305.573.1818
F: 305.573.3766
WWW.KOBIKARP.COM



DRAWN BY: KKAID
CHECKED BY: KKAID
DATE: 07-02-2018

A0.09

1

2

3

4

5

D

C

B

A

D

C

B

A



T (04/17/2018) EXISTING PLAYGROUND Scale: N.T.S.

U (04/17/2018) EXISTING BEACH ENTRANCE Scale: N.T.S.



V (04/17/2018) VIEW FROM BEACH Scale: N.T.S.

REVISIONS / SUBMISSIONS

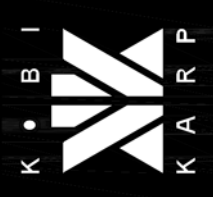
1818

ALL DRAWINGS AND WRITTEN MATERIAL APPEARING HEREIN CONSTITUTE THE ORIGINAL AND UNPUBLISHED WORK OF KOBİ KARP ARCHITECTURE & INTERIOR DESIGN, INC. AND MAY NOT BE REPRODUCED, COPIED, OR DISCLOSED WITHOUT THE EXPRESS WRITTEN CONSENT OF KOBİ KARP ARCHITECTURE & INTERIOR DESIGN, INC. AN 15_2023.

SABRINA COHEN FOUNDATION 5301 COLLINS AVE., MIAMI BEACH, FL 33140	CONTEXT IMAGES
---	-----------------------

KOBİ KARP
 Lic. # AR0012578

ARCHITECTURE
 INTERIOR DESIGN
 PLANNING
 AIA ASID NCARB
 2918 Biscayne Boulevard
 Miami, Florida 33137
 P: 305.573.3788
 F: 305.573.3788
 WWW.KOBİKARP.COM



DRAWN BY:	KKAD
CHECKED BY:	KKAD
DATE:	07-02-2018

A0.10

1

2

3

4

5



Sabrina Cohen Foundation - ADAPTIVE RECREATION CENTER

© The work product provided by Kobi Karp Architecture and Interior Design, Inc. is the sole property of Kobi Karp Architecture and Interior Design, Inc. The work product may not be used without the expressed written consent of Kobi Karp Architecture and Interior Design, Inc. (KKAID)



WWW.KOBIKARP.COM

REVISIONS / SUBMISSIONS

1818

ALL DRAWINGS AND WRITTEN MATERIAL APPEARING HEREIN CONSTITUTE THE ORIGINAL AND UNPUBLISHED WORK OF KOBİ KARP AIA, AND MAY NOT BE REPRODUCED, COPIED, OR DISCLOSED WITHOUT THE EXPRESS WRITTEN CONSENT OF KOBİ KARP ARCHITECTURE & INTERIOR DESIGN, INC. (KKAID), 2018.

SABRINA COHEN FOUNDATION
 5301 COLLINS AVE., MIAMI BEACH, FL 33140
RENDERING

KOBİ KARP
 Lic. # AR0012578

ARCHITECTURE
 INTERIOR DESIGN
 PLANNING
 AIA ASID NCARB
 2015 Biscayne Boulevard
 Miami, Florida 33137
 C: 305.573.1818
 F: 305.573.3766
 WWW.KOBIKARP.COM



DRAWN BY: KKNID
 CHECKED BY: KKNID
 DATE: 07-02-2018

A0.12



Sabrina Cohen Foundation - ADAPTIVE RECREATION CENTER

© The work product provided by Kobi Karp Architecture and Interior Design, Inc. is the sole property of Kobi Karp Architecture and Interior Design, Inc. The work product may not be used without the expressed written consent of Kobi Karp Architecture and Interior Design, Inc (KKAID)



REVISIONS / SUBMISSIONS

1818

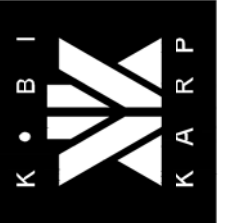
ALL DRAWINGS AND WRITTEN MATERIAL APPEARING HEREIN CONSTITUTE THE ORIGINAL AND UNPUBLISHED WORK OF KOBI KARP AIA, AND MAY NOT BE REPRODUCED, COPIED, OR DISCLOSED WITHOUT THE EXPRESS WRITTEN CONSENT OF KOBI KARP ARCHITECTURE & INTERIOR DESIGN, INC. (KKAID), 2018.

SABRINA COHEN FOUNDATION
5301 COLLINS AVE., MIAMI BEACH, FL 33140
RENDERING



ARCHITECTURE INTERIOR DESIGN PLANNING
AIA ASID NCARB
2015 Biscayne Boulevard Miami, Florida 33137 C: 305.573.1818 F: 305.573.3196
WWW.KOBIKARP.COM

ARCHITECTURE INTERIOR DESIGN PLANNING
AIA ASID NCARB
2015 Biscayne Boulevard Miami, Florida 33137 C: 305.573.1818 F: 305.573.3196
WWW.KOBIKARP.COM



DRAWN BY:	KKND
CHECKED BY:	KKND
DATE:	07-02-2018

A0.13



Sabrina Cohen Foundation - ADAPTIVE RECREATION CENTER

© The work product provided by Kobi Karp Architecture and Interior Design, Inc. is the sole property of Kobi Karp Architecture and Interior Design, Inc. The work product may not be used without the expressed written consent of Kobi Karp Architecture and Interior Design, Inc. (KKAID)



REVISIONS / SUBMISSIONS

1818

ALL DRAWINGS AND WRITTEN MATERIAL APPEARING HEREIN CONSTITUTE THE ORIGINAL AND UNPUBLISHED WORK OF KOBI KARP, INC. AND MAY NOT BE REPRODUCED, COPIED, OR DISCLOSED WITHOUT THE EXPRESS WRITTEN CONSENT OF KOBI KARP ARCHITECTURE & INTERIOR DESIGN, INC. (KKAID).

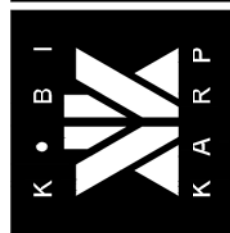
SABRINA COHEN FOUNDATION
5301 COLLINS AVE., MIAMI BEACH, FL 33140

RENDERING

KOBI KARP
Lic. # AR0012578

ARCHITECTURE
INTERIOR DESIGN
PLANNING

AIA ASID NCARB
2015 Biscayne Boulevard
Miami, Florida 33137
C: 305.573.1818
F: 305.573.3196
WWW.KOBIKARP.COM



DRAWN BY:	KKND
CHECKED BY:	KKND
DATE:	07-02-2018

A0.14

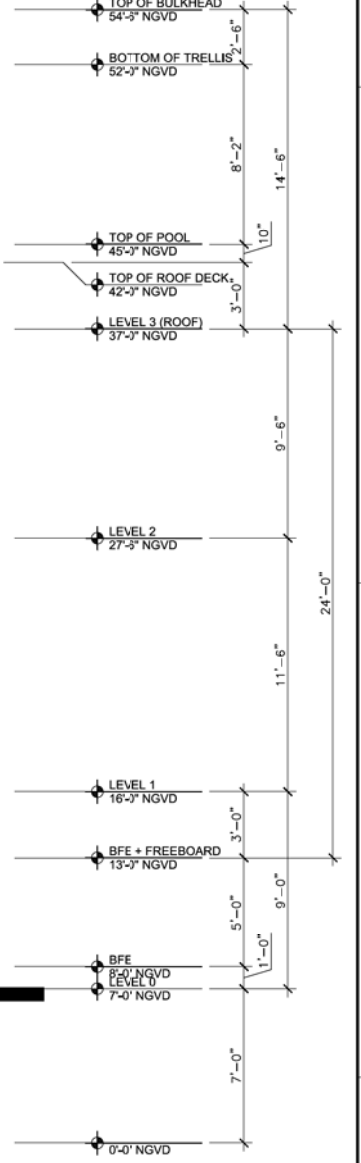
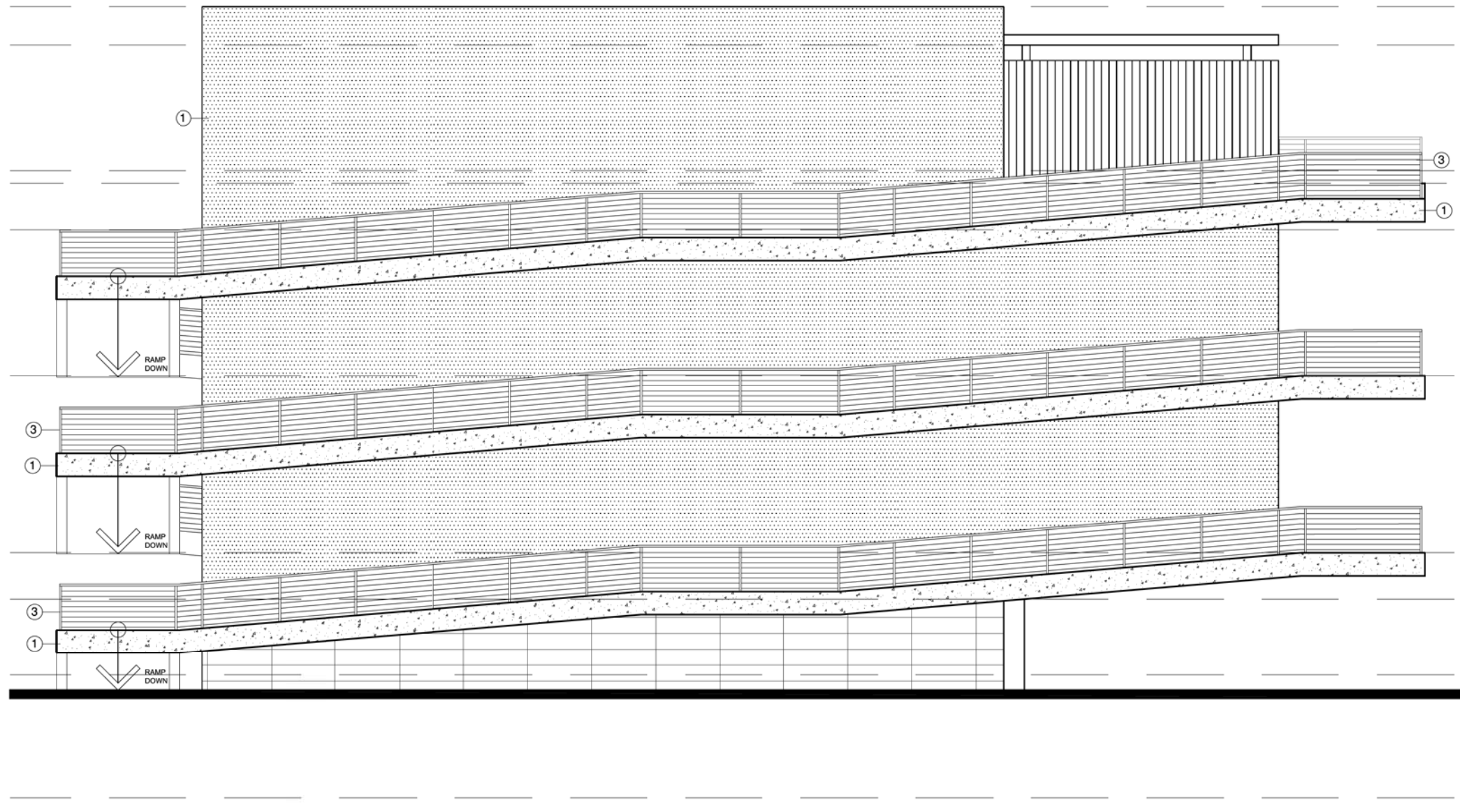
1 2 3 4 5

D

C

B

A



ELEVATION MATERIAL LEGEND:

①	SMOOTH STUCCO FINISH
②	NEW IMPACT RESISTANT ALUMINUM WINDOW SYSTEM
③	STAINLESS STEEL CABLE RAILING SYSTEM
④	GLAZED SLIDING DOOR

	SMOOTH STUCCO
	ALUMINUM FRAME
	CABLE RAILING SYSTEM

① WEST ELEVATION
Scale: 1/4" = 1' (24'x36')



REVISIONS / SUBMISSIONS

1818

ALL DRAWINGS AND WRITTEN MATERIAL APPEARING HEREIN CONSTITUTE THE ORIGINAL AND UNREPEATED WORK OF KOB KARP ARCHITECTURE & INTERIOR DESIGN, INC. NO PART OF THIS DRAWING MAY BE REPRODUCED OR TRANSMITTED IN ANY FORM OR BY ANY MEANS WITHOUT THE EXPRESS WRITTEN CONSENT OF KOB KARP ARCHITECTURE & INTERIOR DESIGN, INC. 07-2018.

SABRINA COHEN FOUNDATION
5301 COLLINS AVE., MIAMI BEACH, FL 33140

ELEVATIONS
WEST ELEVATION

ARCHITECTURE
INTERIOR DESIGN
PLANNING

AIA ASID NCARB
2915 Brickyard Boulevard
Miami, Florida 33137
C: 305.573.8818
F: 305.573.3766
WWW.KOBKARP.COM

KOB KARP
Lic. # AR00012578

ARCHITECTURE
INTERIOR DESIGN
PLANNING

AIA ASID NCARB
2915 Brickyard Boulevard
Miami, Florida 33137
C: 305.573.8818
F: 305.573.3766
WWW.KOBKARP.COM



DRAWN BY: KKJAD
CHECKED BY: KKJAD
DATE: 07-02-2018

A4.01

1

2

3

4

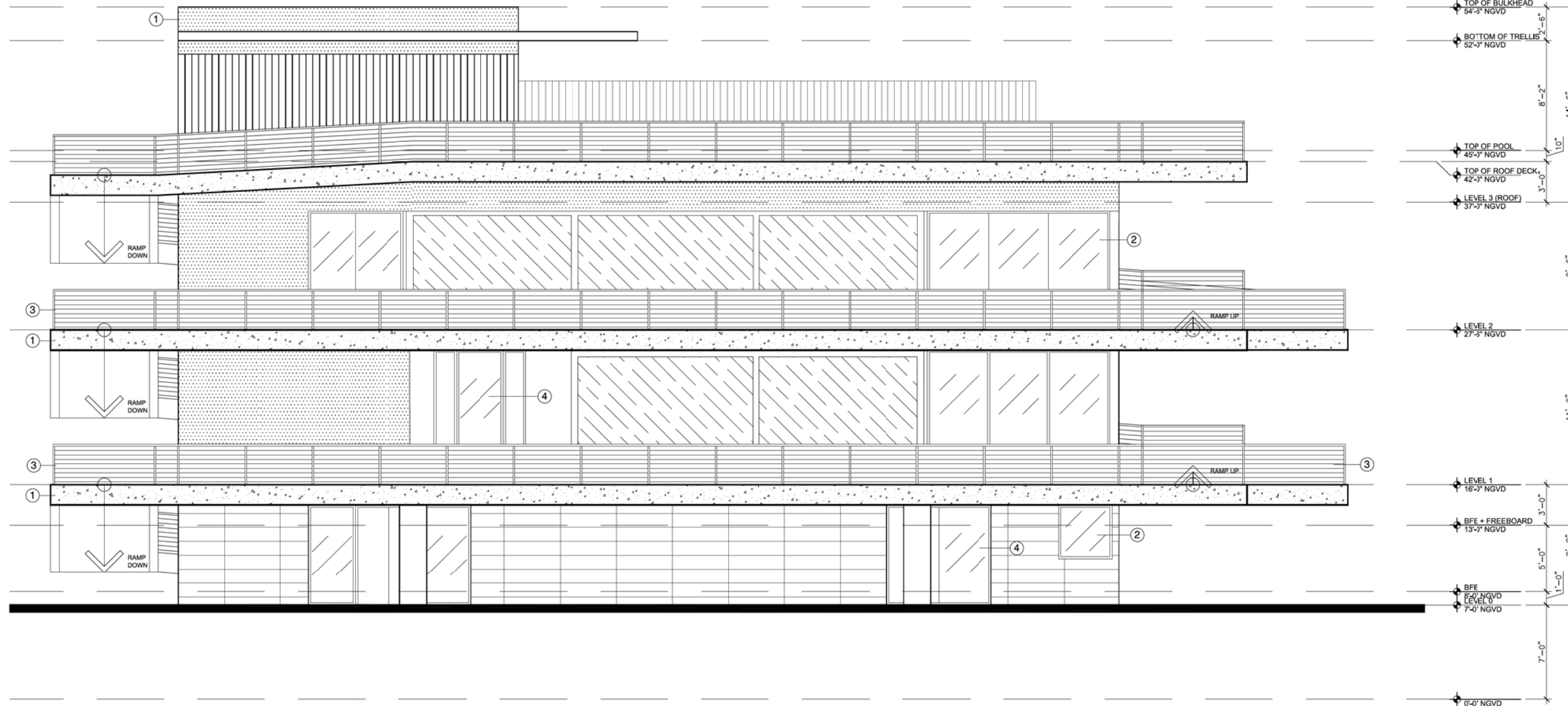
5

D

C

B

A



ELEVATION MATERIAL LEGEND:	
①	SMOOTH STUCCO FINISH
②	NEW IMPACT RESISTANT ALUMINUM WINDOW SYSTEM
③	STAINLESS STEEL CABLE RAILING SYSTEM
④	GLAZED SLIDING DOOR



① SOUTH ELEVATION

Scale: 1/4" = 1' (24'x36')



REVISIONS / SUBMISSIONS

1818

ALL DRAWINGS AND WRITTEN MATERIAL APPEARANCES HEREBY CONSTITUTE THE ORIGINAL AND EXCLUSIVE WORK OF KOB KARP ARCHITECTURE & INTERIOR DESIGN, INC. AND MAY NOT BE REPRODUCED OR TRANSMITTED IN ANY FORM OR BY ANY MEANS WITHOUT THE EXPRESS WRITTEN CONSENT OF KOB KARP ARCHITECTURE & INTERIOR DESIGN, INC. 07-2018

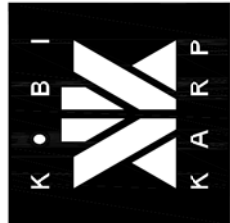
SABRINA COHEN FOUNDATION
5301 COLLINS AVE., MIAMI BEACH, FL 33140

ELEVATIONS
SOUTH ELEVATION



KOB KARP
Lic. # AR00012578

ARCHITECTURE INTERIOR DESIGN PLANNING
AIA ASID NCARB
2915 Brickyard Boulevard
Miami, Florida 33137
C: 305.573.8818
F: 305.573.3766
WWW.KOBKARP.COM

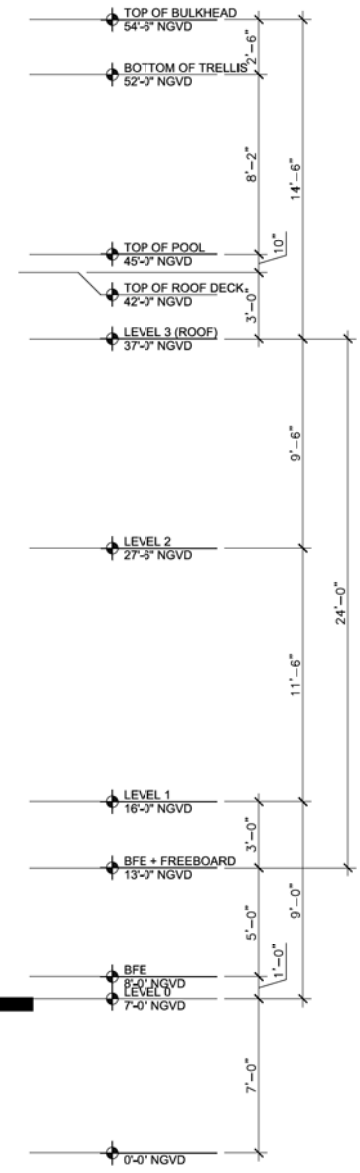
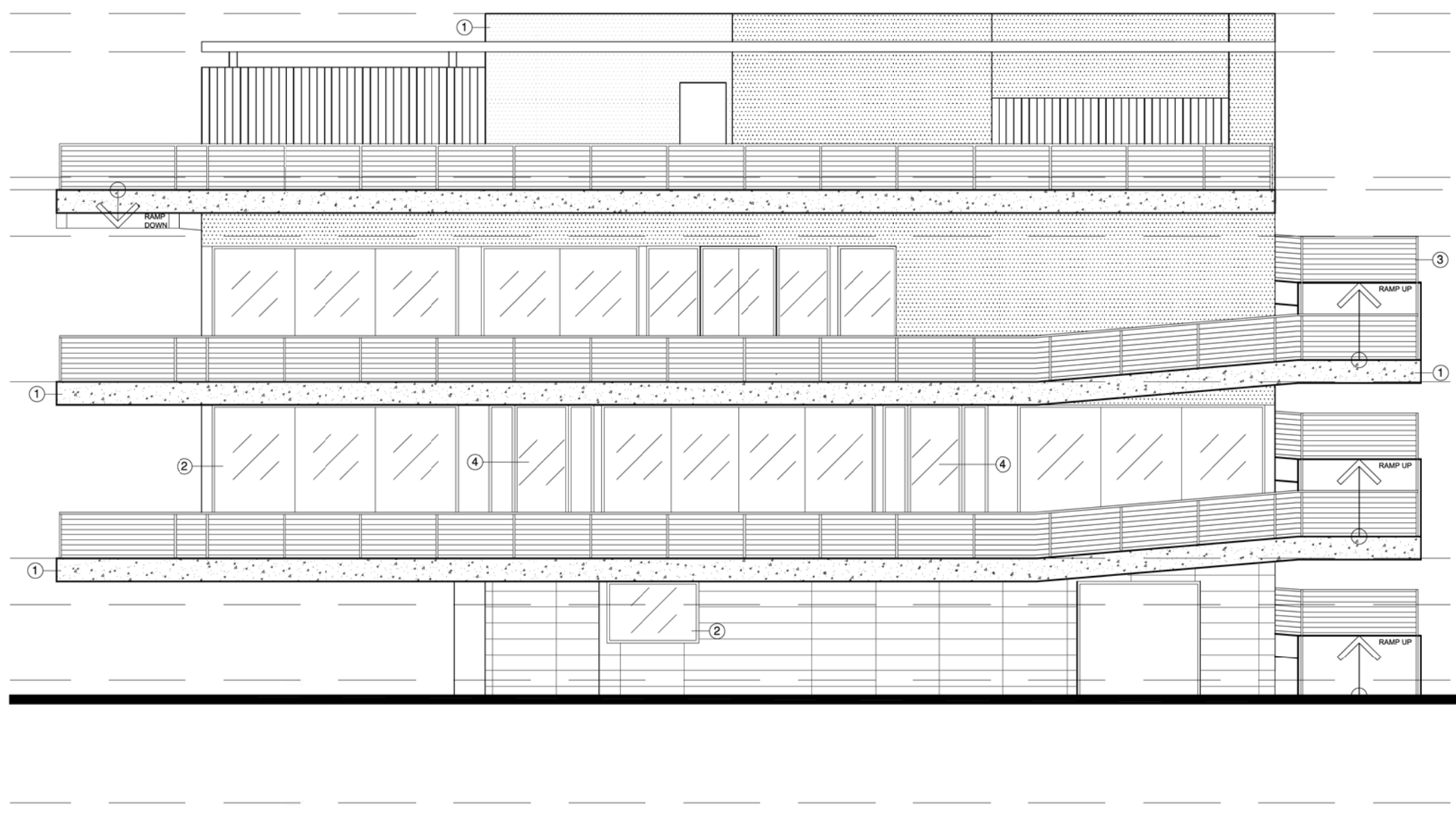


DRAWN BY: KKAIID
CHECKED BY: KKAIID
DATE: 07-02-2018

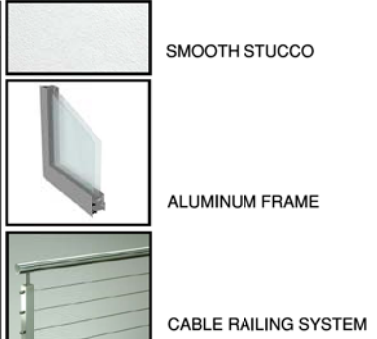
A4.02

1 2 3 4 5

D
C
B
A



- ELEVATION MATERIAL LEGEND:**
- ① — SMOOTH STUCCO FINISH
 - ② — NEW IMPACT RESISTANT ALUMINUM WINDOW SYSTEM
 - ③ — STAINLESS STEEL CABLE RAILING SYSTEM
 - ④ — GLAZED SLIDING DOOR



① EAST ELEVATION
Scale: 1/4" = 1' (24'x36')



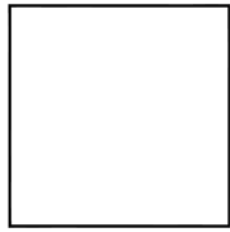
REVISIONS / SUBMISSIONS

1818

ALL DRAWINGS AND WRITTEN MATERIAL APPEARING HEREIN CONSTITUTE THE ORIGINAL AND UNREPEATED WORK OF KOBİ KARP ARCHITECTURE & INTERIOR DESIGN, INC. NO. PART MAY BE REPRODUCED OR TRANSMITTED IN ANY FORM OR BY ANY MEANS WITHOUT THE EXPRESS WRITTEN CONSENT OF KOBİ KARP ARCHITECTURE & INTERIOR DESIGN, INC. AIA # 2022

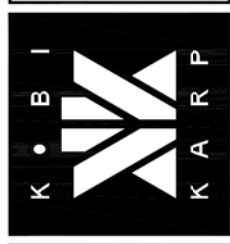
SABRINA COHEN FOUNDATION
5301 COLLINS AVE., MIAMI BEACH, FL 33140

ELEVATIONS
EAST ELEVATION



KOBİ KARP
Lic. # AR0012578

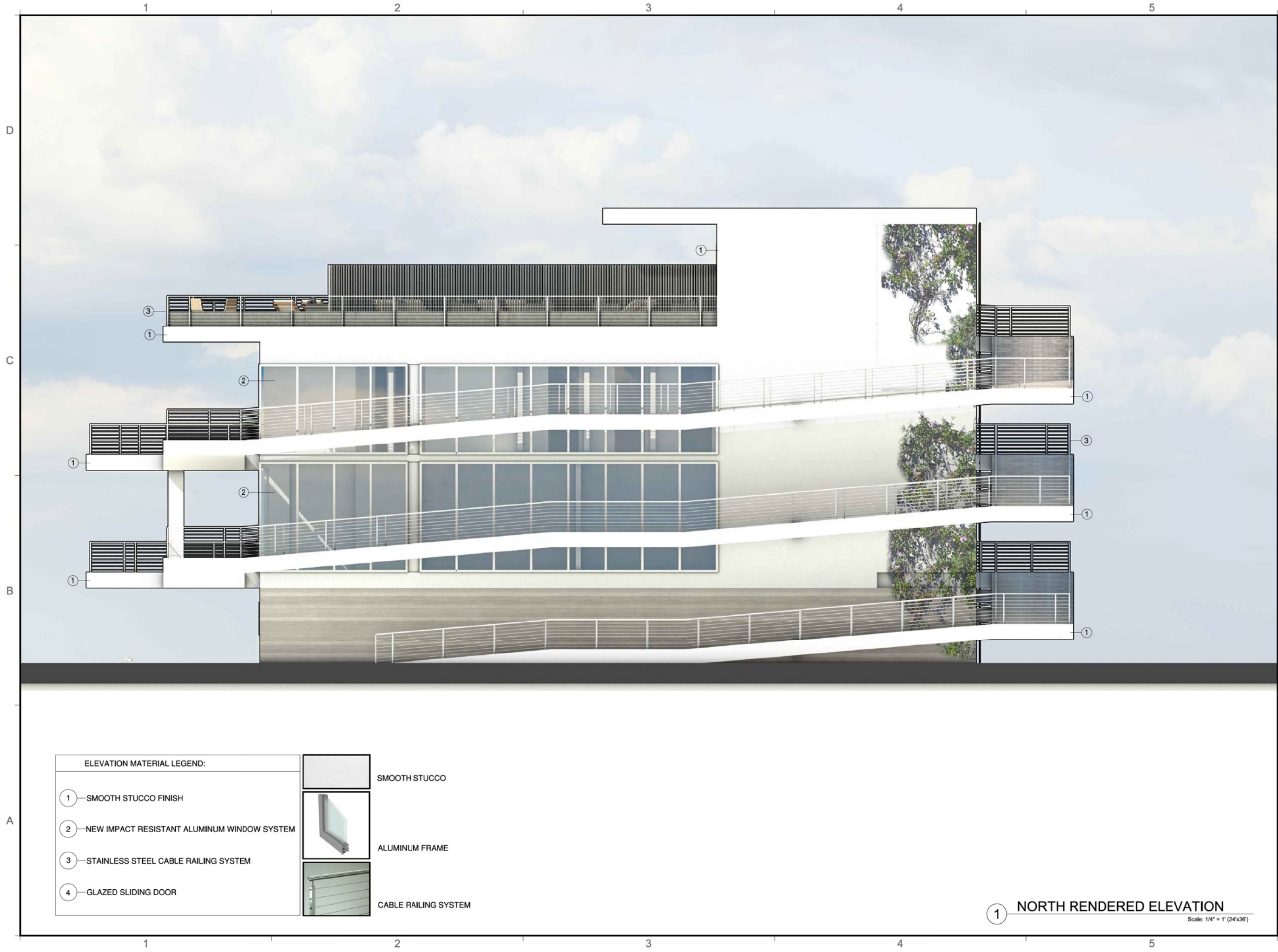
**ARCHITECTURE
INTERIOR DESIGN
PLANNING**
AIA ASID NCARB
2915 Brickyard Boulevard
Miami, Florida 33137
C: 305.573.8818
F: 305.573.3706
WWW.KOBİKARP.COM



DRAWN BY: KKAID
CHECKED BY: KKAID
DATE: 07-02-2018

A4.03

1 2 3 4 5



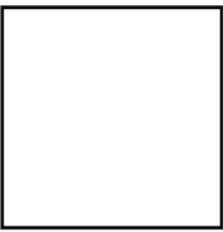
REVISIONS / SUBMISSIONS

NO.	DATE	DESCRIPTION

1818

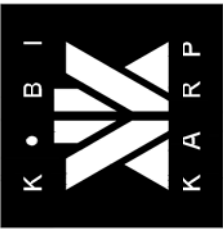
ALL DRAWINGS AND WRITTEN MATERIAL APPEARING HEREIN CONSTITUTE THE ORIGINAL AND UNPUBLISHED WORK OF KOBBI KARP ARCHITECTURE & INTERIOR DESIGN, INC. AND MAY NOT BE DUPLICATED, COPIED, REPRODUCED, OR IN ANY MANNER USED OR DISCLOSED WITHOUT THE EXPRESS WRITTEN CONSENT OF KOBBI KARP ARCHITECTURE & INTERIOR DESIGN, INC. (AIA #10012578)

SABRINA COHEN FOUNDATION
5301 COLLINS AVE., MIAMI BEACH, FL 33140
RENDERED ELEVATIONS



KOBBI KARP
Lic. # AR0012578

ARCHITECTURE
INTERIOR DESIGN
PLANNING
AIA ASID NCARB
2015 Biscayne Boulevard
Miami, Florida 33137
C: 305.573.1818
F: 305.573.3766
WWW.KOBBIKARP.COM



DRAWN BY: KKND
CHECKED BY: KKND
DATE: 07-02-2018

A4.10

ELEVATION MATERIAL LEGEND:

①	SMOOTH STUCCO FINISH		SMOOTH STUCCO
②	NEW IMPACT RESISTANT ALUMINUM WINDOW SYSTEM		ALUMINUM FRAME
③	STAINLESS STEEL CABLE RAILING SYSTEM		CABLE RAILING SYSTEM
④	GLAZED SLIDING DOOR		

① NORTH RENDERED ELEVATION
Scale: 1/4" = 1' (24"x36")

1

2

3

4

5

D

D

C

C

B

B

A

A

REVISIONS / SUBMISSIONS

1818

ALL DRAWINGS AND WRITTEN MATERIAL APPEARING HEREIN
CONSTITUTE THE ORIGINAL AND UNPUBLISHED WORK OF KOB
KARP INC. AND MAY NOT BE REPRODUCED, COPIED, OR DISSEMINATED
WITHOUT THE EXPRESS WRITTEN CONSENT OF KOB KARP
ARCHITECTURE & INTERIOR DESIGN, INC. AIA, FL, 2021.

SABRINA COHEN FOUNDATION

5301 COLLINS AVE., MIAMI BEACH, FL 33140

RENDERED ELEVATIONS



ELEVATION MATERIAL LEGEND:	
①	SMOOTH STUCCO FINISH
②	NEW IMPACT RESISTANT ALUMINUM WINDOW SYSTEM
③	STAINLESS STEEL CABLE RAILING SYSTEM
④	GLAZED SLIDING DOOR

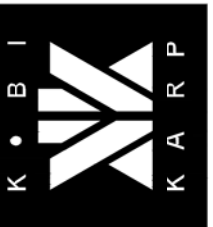


① WEST RENDERED ELEVATION

Scale: 1/4" = 1' (24"x36")

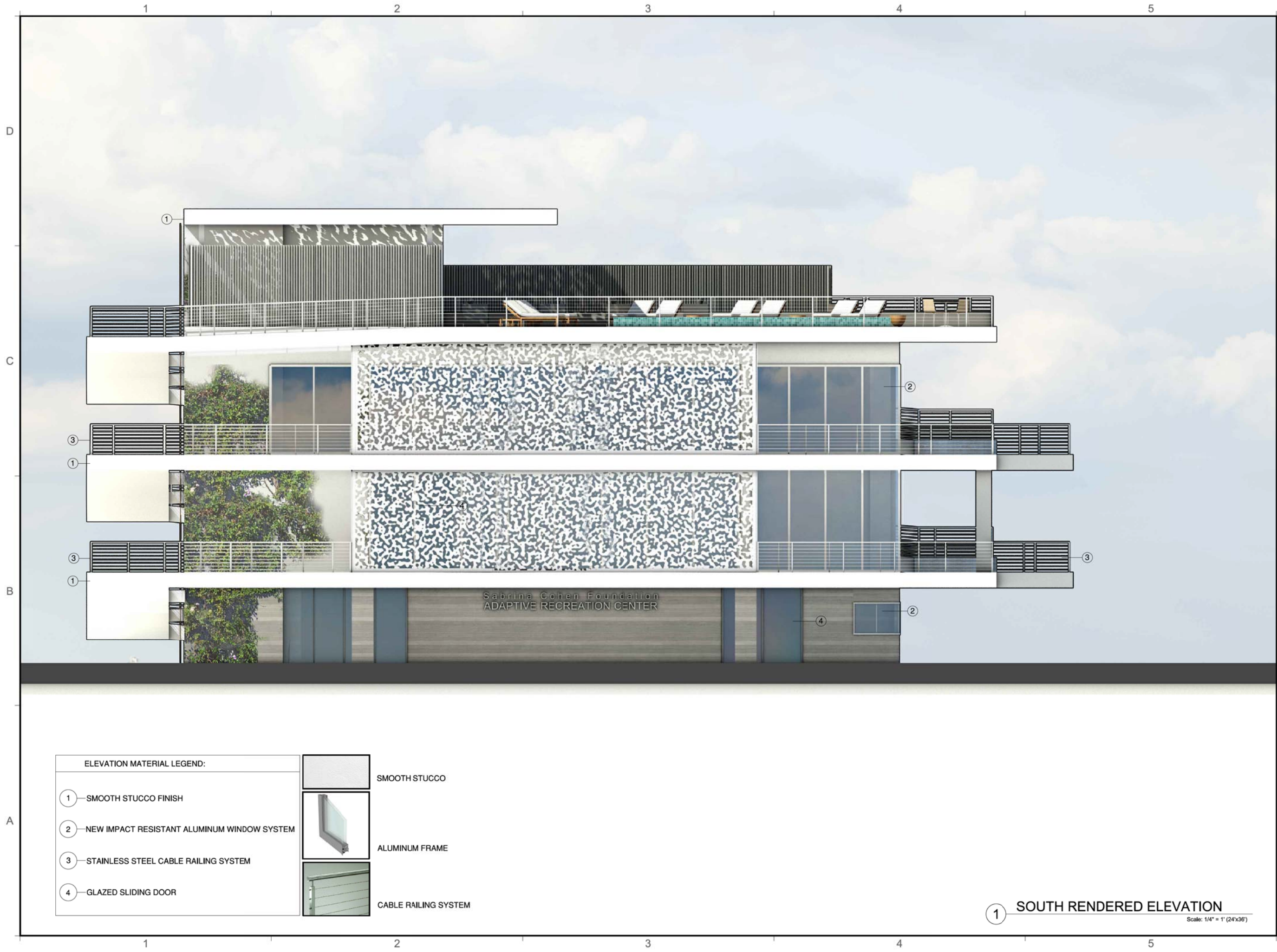
ARCHITECTURE
INTERIOR DESIGN
PLANNING

AIA ASID NCARB
2015 Biscayne Boulevard
Miami, Florida 33137
C: 305.573.1818
F: 305.573.3196
WWW.KOBKARP.COM



DRAWN BY: KKND
CHECKED BY: KKND
DATE: 07-02-2018

A4.11



ELEVATION MATERIAL LEGEND:	
① — SMOOTH STUCCO FINISH	 SMOOTH STUCCO
② — NEW IMPACT RESISTANT ALUMINUM WINDOW SYSTEM	 ALUMINUM FRAME
③ — STAINLESS STEEL CABLE RAILING SYSTEM	 CABLE RAILING SYSTEM
④ — GLAZED SLIDING DOOR	

① SOUTH RENDERED ELEVATION
Scale: 1/4" = 1' (24"x36")

REVISIONS / SUBMISSIONS

1818

ALL DRAWINGS AND WRITTEN MATERIAL APPEARING HEREIN CONSTITUTE THE ORIGINAL AND UNPUBLISHED WORK OF KOB KARP PA, AND MAY NOT BE DUPLICATED, COPIED, OR REPRODUCED WITHOUT THE EXPRESS WRITTEN CONSENT OF KOB KARP ARCHITECTURE & INTERIOR DESIGN, INC. (K.A.I.), 2018.

SABRINA COHEN FOUNDATION
5301 COLLINS AVE., MIAMI BEACH, FL 33140

RENDERED ELEVATIONS
SHEET TITLE 2

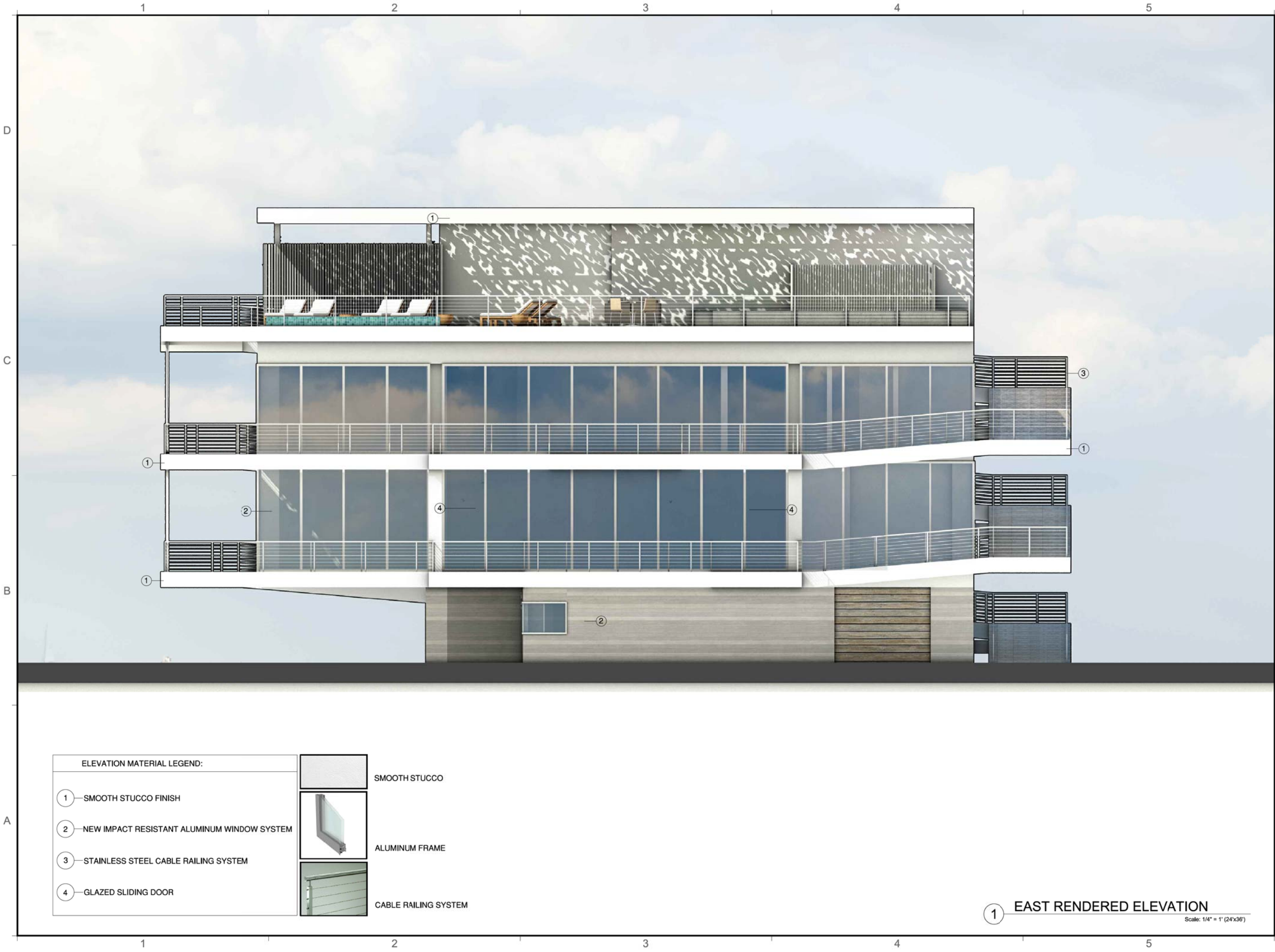
ARCHITECTURE
INTERIOR DESIGN
PLANNING

AIA ASID NCARB
2015 Biscayne Boulevard
Miami, Florida 33137
C: 305.573.1818
F: 305.573.3786
WWW.KOBKARP.COM



DRAWN BY: KKND
CHECKED BY: KKND
DATE: 07-02-2018

A4.12



REVISIONS / SUBMISSIONS

1818

ALL DRAWINGS AND WRITTEN MATERIAL APPEARING HEREIN CONSTITUTE THE ORIGINAL AND UNPUBLISHED WORK OF KOBBI KARP, P.A. AND MAY NOT BE REPRODUCED, COPIED, OR DISCLOSED WITHOUT THE EXPRESS WRITTEN CONSENT OF KOBBI KARP ARCHITECTURE & INTERIOR DESIGN, INC. (K.A.I.D.)

SABRINA COHEN FOUNDATION
5301 COLLINS AVE., MIAMI BEACH, FL 33140
RENDERED ELEVATIONS



KOBBI KARP
Lic. # AR0012578

ARCHITECTURE
INTERIOR DESIGN
PLANNING
AIA ASID NCARB
2015 Biscayne Boulevard
Miami, Florida 33137
C: 305.573.1818
F: 305.573.3798
WWW.KOBIKARP.COM



DRAWN BY: KKND
CHECKED BY: KKND
DATE: 07-02-2018

A4.13

ELEVATION MATERIAL LEGEND:	
①	SMOOTH STUCCO FINISH
②	NEW IMPACT RESISTANT ALUMINUM WINDOW SYSTEM
③	STAINLESS STEEL CABLE RAILING SYSTEM
④	GLAZED SLIDING DOOR
	SMOOTH STUCCO
	ALUMINUM FRAME
	CABLE RAILING SYSTEM

① EAST RENDERED ELEVATION
Scale: 1/4" = 1' (24"x36')

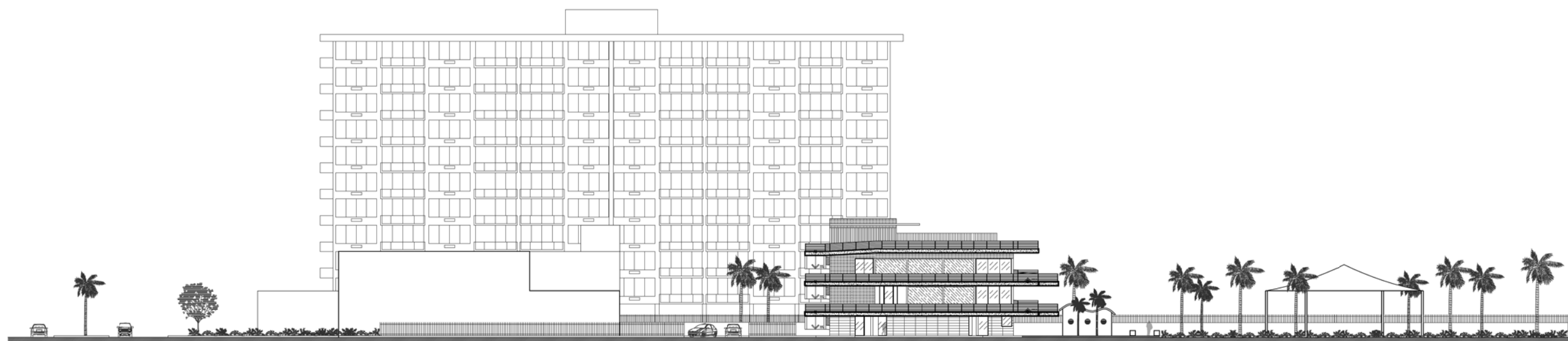
1 2 3 4 5

D

C

B

A



1 CONTEXTUAL SIDE ELEVATION (04/30/2018) Scale: 1" = 20'



2 CONTEXTUAL STREET ELEVATION (04/30/2018) Scale: 1" = 20'

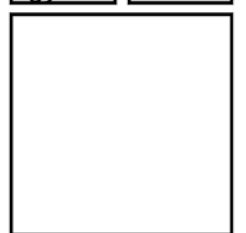
1 2 3 4 5

REVISIONS / SUBMISSIONS

1818

ALL DRAWINGS AND WRITTEN MATERIAL APPEARING HEREIN CONSTITUTE THE ORIGINAL AND UNPUBLISHED WORK OF KOB KARP INC. AND MAY NOT BE REPRODUCED, COPIED OR DISCLOSED WITHOUT THE EXPRESS WRITTEN CONSENT OF KOB KARP ARCHITECTURE & INTERIOR DESIGN INC. AIA, INC., 2018.

SABRINA COHEN FOUNDATION
 5301 COLLINS AVE., MIAMI BEACH, FL 33140
CONTEXTUAL ELEVATIONS



KOBI KARP
 Lic. # AR0012578

ARCHITECTURE
 INTERIOR DESIGN
 PLANNING
 AIA ASID NCARB
 2015 Biscayne Boulevard
 Miami, Florida 33137
 O: 305.573.1818
 F: 305.573.3166
 WWW.KOBKARP.COM



DRAWN BY: KKAID
 CHECKED BY: KKAID
 DATE: 07-02-2018

A4.20

