


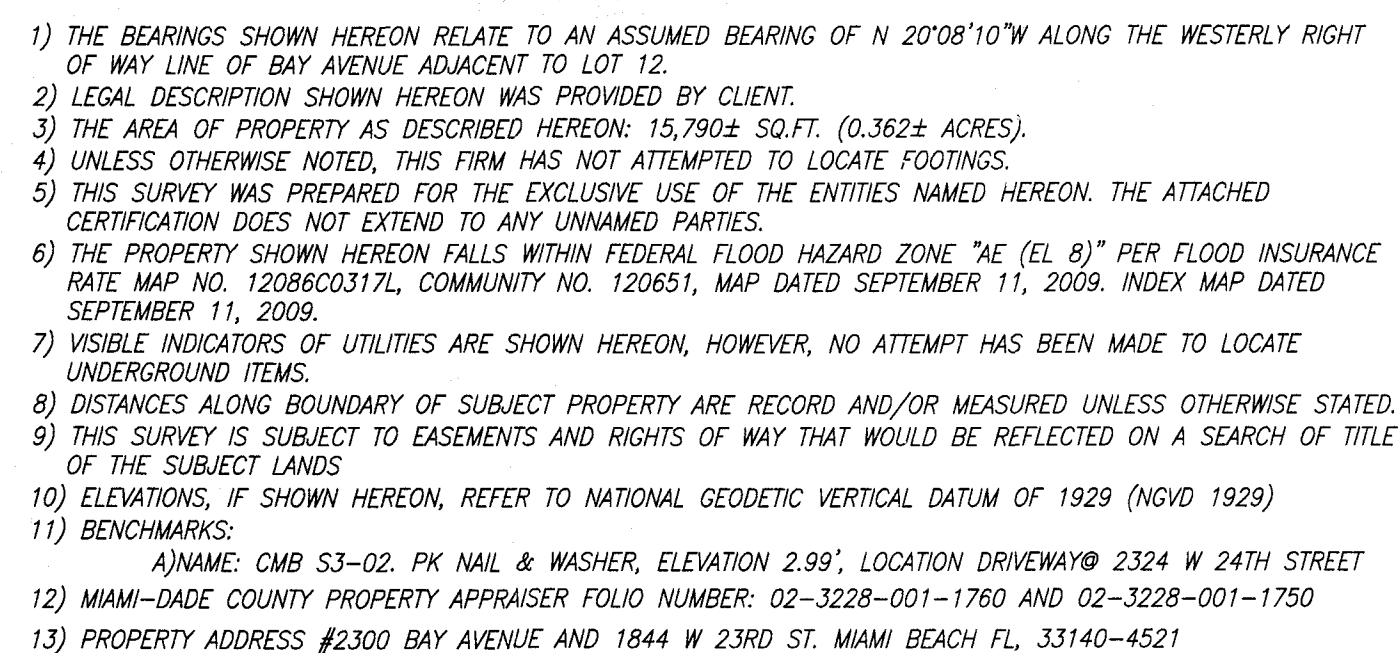
ABBREVIATIONS:

A denotes **ARC**
B denotes **BELL ANGLE**
C denotes **ARC DISTANCE**
D denotes **DIAMETER**
E denotes **EMERGENCY**
PCP denotes **PERMANENT CONTROL POINT**
P denotes **POINT**
R denotes **REFERENCE**
PB denotes **PILOT BOOK**
P denotes **POINT**
PCO denotes **POINT OF COMMENCEMENT**
P denotes **POINT OF BEGINNING**
QWQ denotes **QUICK UTILITY WIRE**
OHU denotes **OPEN HOLE**
P denotes **POINT**
CBS denotes **CONCRETE BLOCK STRUCTURE**
C denotes **CONCRETE**
CLF denotes **CLIMBING**
F denotes **FOUND**
F.P.P. denotes **FOUND FROM PIPE**
S.P.P. denotes **SIGHT FROM PIPE**
F.N.D. denotes **FOUND NAIL & BRASS DISC**
C denotes **CONCRETE**
C denotes **CLEAR**
C denotes **CORROSION**
C denotes **CORRODED**
C denotes **CORROGATED**
D denotes **DEESED DISTANCE**
D denotes **DIAMETER**
D denotes **DIAMETER**
(M) denotes **MEASURED DISTANCE**
(R) denotes **RECORD ON PLATED DISTANCE**

PHASED UNDERGROUND UTILITIES (APPROXIMATE)

CCM denotes **COMMUNICATION**
DN denotes **DRAINAGE**
TEL denotes **TELEPHONE**
F denotes **FORCE MAIN**
PRG denotes **IRRIGATION**
G denotes **GAS**
N denotes **NATURAL GAS**
S denotes **SEWAGE**
W denotes **WATER**

BY: 
 MARK STEVEN JOHNSON, PRINCIPAL
 PROFESSIONAL LAND SURVEYOR No. 4775
 STATE OF FLORIDA.



illense*	6	12	6
illense*	6	12	6
illense*	5	12	6
illense*	6	12	6
illense*	8	13	6
illense*	4	12	6
illense*	6	12	4
illense*	9	10	6
illense*	10	12	8
illense*	10	15	18
illense*	12	26	15
illense*	10	16	15
illense*	12	25	15
illense*	10	14	15
illense*	10	13	15
illense*	10	28	15
illense*	10	12	10
illense*	9	16	6
illense*	8	22	6
illense*	8	20	6
illense*	60	0	0
illense*	10	21	14
illense*	10	17	15
illense*	10	25	14
illense*	8	23	14
illense*	10	25	15
illense*	8	20	12
illense*	16	28	32
illense*	15	28	22

"TREE LIST" IS SUBJECT TO
A CERTIFIED ARBORIST OR

LOT 11
"3RD REV. PLAT OF
SUNSET ISLANDS"
(PB 40 - PG 8)
15,790 ± SQ.FT.
0.362 ± ACRES

LOT 12
N.E. CORNER LOT 12
(S.E. CORNER LOT 13)
S031° 49' 56.51"
W151' 04' 07.12"
5154

LOT 13
N.E. CORNER LOT 13
(S.E. CORNER LOT 12)
S031° 49' 56.51"
W151' 04' 07.12"
5154

LOT 14
N.E. CORNER LOT 14
(S.E. CORNER LOT 15)
S031° 49' 56.51"
W151' 04' 07.12"
5154

LOT 15
N.E. CORNER LOT 15
(S.E. CORNER LOT 16)
S031° 49' 56.51"
W151' 04' 07.12"
5154

LOT 16
N.E. CORNER LOT 16
(S.E. CORNER LOT 17)
S031° 49' 56.51"
W151' 04' 07.12"
5154

LOT 17
N.E. CORNER LOT 17
(S.E. CORNER LOT 18)
S031° 49' 56.51"
W151' 04' 07.12"
5154

LOT 18
N.E. CORNER LOT 18
(S.E. CORNER LOT 19)
S031° 49' 56.51"
W151' 04' 07.12"
5154

LOT 19
N.E. CORNER LOT 19
(S.E. CORNER LOT 20)
S031° 49' 56.51"
W151' 04' 07.12"
5154

LOT 20
N.E. CORNER LOT 20
(S.E. CORNER LOT 21)
S031° 49' 56.51"
W151' 04' 07.12"
5154

LOT 21
N.E. CORNER LOT 21
(S.E. CORNER LOT 22)
S031° 49' 56.51"
W151' 04' 07.12"
5154

LOT 22
N.E. CORNER LOT 22
(S.E. CORNER LOT 23)
S031° 49' 56.51"
W151' 04' 07.12"
5154

LOT 23
N.E. CORNER LOT 23
(S.E. CORNER LOT 24)
S031° 49' 56.51"
W151' 04' 07.12"
5154

LOT 24
N.E. CORNER LOT 24
(S.E. CORNER LOT 25)
S031° 49' 56.51"
W151' 04' 07.12"
5154

LOT 25
N.E. CORNER LOT 25
(S.E. CORNER LOT 26)
S031° 49' 56.51"
W151' 04' 07.12"
5154

LOT 26
N.E. CORNER LOT 26
(S.E. CORNER LOT 27)
S031° 49' 56.51"
W151' 04' 07.12"
5154

LOT 27
N.E. CORNER LOT 27
(S.E. CORNER LOT 28)
S031° 49' 56.51"
W151' 04' 07.12"
5154

LOT 28
N.E. CORNER LOT 28
(S.E. CORNER LOT 29)
S031° 49' 56.51"
W151' 04' 07.12"
5154

LOT 29
N.E. CORNER LOT 29
(S.E. CORNER LOT 30)
S031° 49' 56.51"
W151' 04' 07.12"
5154

LOT 30
N.E. CORNER LOT 30
(S.E. CORNER LOT 31)
S031° 49' 56.51"
W151' 04' 07.12"
5154

LOT 31
N.E. CORNER LOT 31
(S.E. CORNER LOT 32)
S031° 49' 56.51"
W151' 04' 07.12"
5154

LOT 32
N.E. CORNER LOT 32
(S.E. CORNER LOT 33)
S031° 49' 56.51"
W151' 04' 07.12"
5154

LOT 33
N.E. CORNER LOT 33
(S.E. CORNER LOT 34)
S031° 49' 56.51"
W151' 04' 07.12"
5154

LOT 34
N.E. CORNER LOT 34
(S.E. CORNER LOT 35)
S031° 49' 56.51"
W151' 04' 07.12"
5154

LOT 35
N.E. CORNER LOT 35
(S.E. CORNER LOT 36)
S031° 49' 56.51"
W151' 04' 07.12"
5154

LOT 36
N.E. CORNER LOT 36
(S.E. CORNER LOT 37)
S031° 49' 56.51"
W151' 04' 07.12"
5154

LOT 37
N.E. CORNER LOT 37
(S.E. CORNER LOT 38)
S031° 49' 56.51"
W151' 04' 07.12"
5154

LOT 38
N.E. CORNER LOT 38
(S.E. CORNER LOT 39)
S031° 49' 56.51"
W151' 04' 07.12"
5154

LOT 39
N.E. CORNER LOT 39
(S.E. CORNER LOT 40)
S031° 49' 56.51"
W151' 04' 07.12"
5154

LOT 40
N.E. CORNER LOT 40
(S.E. CORNER LOT 41)
S031° 49' 56.51"
W151' 04' 07.12"
5154

LOT 41
N.E. CORNER LOT 41
(S.E. CORNER LOT 42)
S031° 49' 56.51"
W151' 04' 07.12"
5154

LOT 42
N.E. CORNER LOT 42
(S.E. CORNER LOT 43)
S031° 49' 56.51"
W151' 04' 07.12"
5154

LOT 43
N.E. CORNER LOT 43
(S.E. CORNER LOT 44)
S031° 49' 56.51"
W151' 04' 07.12"
5154

LOT 44
N.E. CORNER LOT 44
(S.E. CORNER LOT 45)
S031° 49' 56.51"
W151' 04' 07.12"
5154

LOT 45
N.E. CORNER LOT 45
(S.E. CORNER LOT 46)
S031° 49' 56.51"
W151' 04' 07.12"
5154

LOT 46
N.E. CORNER LOT 46
(S.E. CORNER LOT 47)
S031° 49' 56.51"
W151' 04' 07.12"
5154

LOT 47
N.E. CORNER LOT 47
(S.E. CORNER LOT 48)
S031° 49' 56.51"
W151' 04' 07.12"
5154

LOT 48
N.E. CORNER LOT 48
(S.E. CORNER LOT 49)
S031° 49' 56.51"
W151' 04' 07.12"
5154

LOT 49
N.E. CORNER LOT 49
(S.E. CORNER LOT 50)
S031° 49' 56.51"
W151' 04' 07.12"
5154

LOT 50
N

