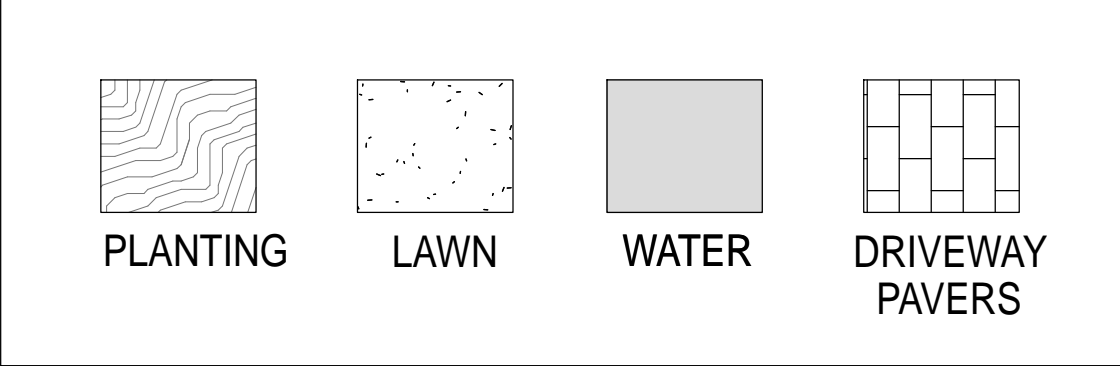


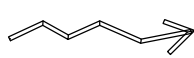
SHEET INDEX

SHEET #	SHEET TITLE:	2018.12.10 DRB SUBMITTAL
L-1.00	HARDSCAPE PLAN	●
L-3.00	TREE DISPOSITION PLAN	●
L-3.01	LANDSCAPE PLAN	●
L-3.02	PLANT LIST AND EXISTING TREES LIST	●
L-3.03	GENERAL PLANTING DETAILS	●
L-4.00	LANDSCAPE LIGHTING PLAN	●

GRAPHIC LEGEND



SLOPE OF SURFACE DRAINAGE



PROPOSED CONTOURS



PROPOSED SPOT ELEVATIONS

+X.XX' NGVD

HARDSCAPE PLAN  
1/8" = 1'-0"



TO THE BEST OF OUR KNOWLEDGE,  
THESE PLANS COMPLY WITH ALL  
APPLICABLE BUILDING AND ZONING CODES.

LANDSCAPE ARCHITECT:

NATURALFICIAL INC.

6915 RED ROAD, SUITE 224.  
CORAL GABLES, FL 33143  
T. 786.717.6564  
M.305.321.2341  
W.WWW.NATURALFICIAL.COM  
FIRM REG. NO. LC26000548



PETER ANSELMO, RLA  
FL# 6667221

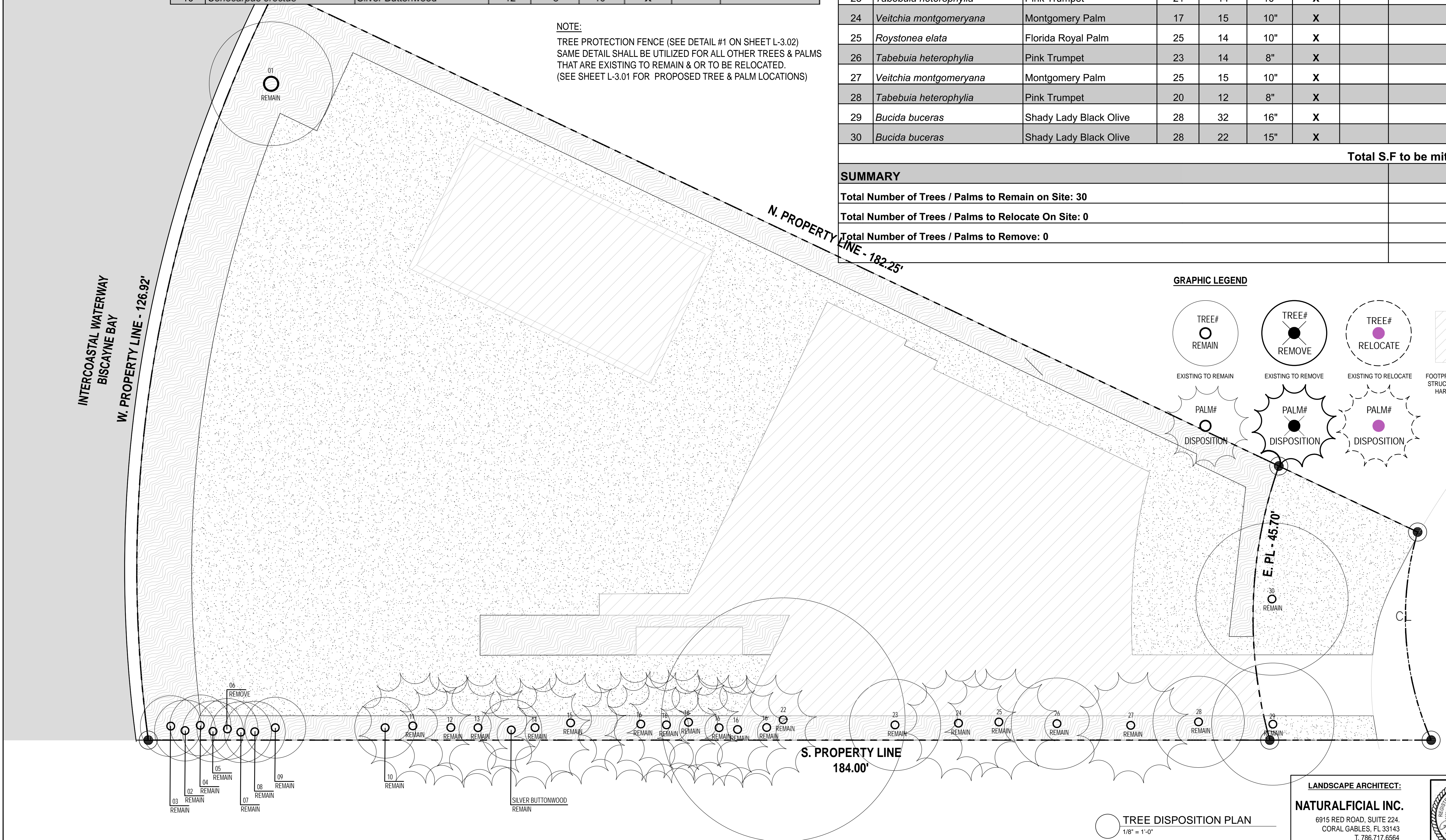



KEY #	BOTANICAL NAME	COMMON NAME	SIZE			DISPOSITION		
			HT. (FT.)	SP (FT.)	DBH. (IN.)	REMAIN	REMOVE	RELOCATE ON SITE
1	<i>Clusia rosea</i>	Autograph Tree	17	18	10	X		
2	<i>Coccoloba diversifolia</i>	Pigeon plum	12	6	6	X		
3	<i>Pimenta racemosa</i>	Bay Rum	12	6	6	X		
4	<i>Pimenta racemosa</i>	Bay Rum	12	6	5	X		
5	<i>Pimenta racemosa</i>	Bay Rum	12	6	6	X		
6	<i>Coccoloba diversifolia</i>	Pigeon plum	13	6	8	X		
7	<i>Pimenta racemosa</i>	Bay Rum	12	6	4	X		
8	<i>Pimenta racemosa</i>	Bay Rum	12	4	6	X		
9	<i>Coccoloba diversifolia</i>	Pigeon plum	10	6	9	X		
10	<i>Conocarpus erectus</i>	Silver Buttonwood	12	8	10"	X		

TREE PROTECTION FENCE (SEE DETAIL #1 ON SHEET L-3.02)  
SAME DETAIL SHALL BE UTILIZED FOR ALL OTHER TREES & PALMS  
THAT ARE EXISTING TO REMAIN & OR TO BE RELOCATED.  
(SEE SHEET L-3.01 FOR PROPOSED TREE & PALM LOCATIONS)

		Total S.F. to be mitigated:
<b>SUMMARY</b>		
Total Number of Trees / Palms to Remain on Site: 30		
Total Number of Trees / Palms to Relocate On Site: 0		
Total Number of Trees / Palms to Remove: 0		
LINE - 182		

Figure 1 illustrates the footprint of proposed structures including hardscape areas. The diagram shows three rows of structures. The top row shows three circular structures labeled "TREE#" and "REMAIN", "REMOVE", and "RELOCATE" respectively, with a dashed circle around the "RELOCATE" structure. The bottom row shows three irregular, star-shaped structures labeled "PALM#" and "DISPOSITION", with a dashed circle around the "DISPOSITION" structure. A legend on the right shows a hatched square labeled "FOOTPRINT OF PROPOSED STRUCTURES INCLUDING HARDSCAPE AREAS".



 **TREE DISPOSITION PLAN**  
1/8" = 1'-0"

 **N**

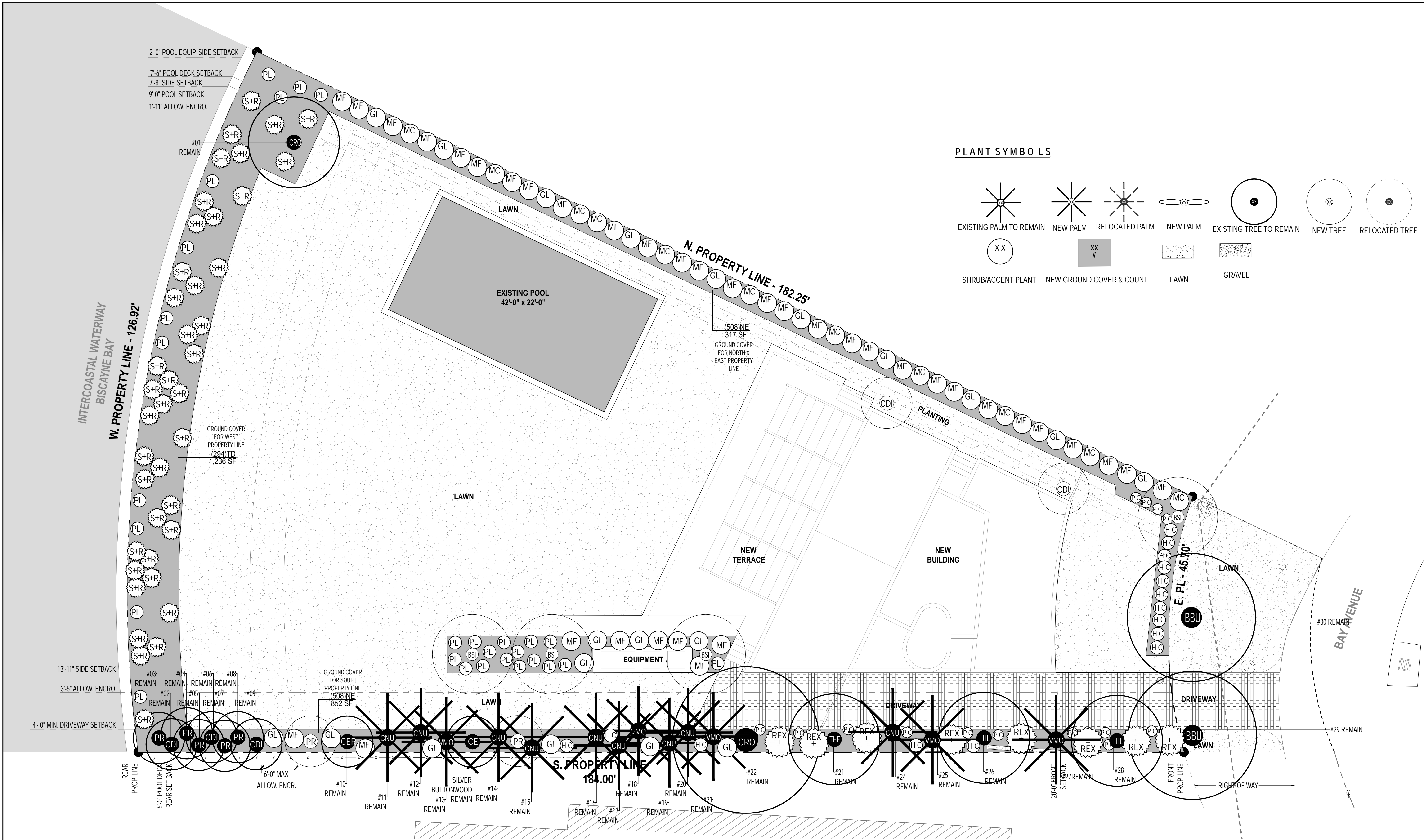
TO THE BEST OF OUR KNOWLEDGE,  
THESE PLANS COMPLY WITH ALL  
APPLICABLE BUILDING AND ZONING CODES

PETER ANSELMO, RLA  
FL# 6667221

**TREE DISPOSITION  
PLAN**

**L3.00**







CITY OF MIAMI BEACH

LANDSCAPE LEGEND

INFORMATION REQUIRED TO BE PERMANENTLY AFFIXED TO PLANS

Zoning District **RS-3** Lot Area **15,790** Acres **0.36**

OPEN SPACE

A. Square feet of required Open Space as indicated on site plan:

(1,002 SF) Front Yard + (3,323 SF) Rear Yard x 50%

B. Square feet of parking lot open space required as indicated on site plan:

Number of parking spaces n/a x 10 s.f. parking space =

C. Total square feet of landscaped open space required: A+B=

LAWN AREA CALCULATION

A. Square feet of landscaped open space required

B. Maximum lawn area (sod) permitted= 50% x 15,790 SF

TREES

A. Number of trees required per lot or net lot acre, including existing number of trees meeting minimum requirements, not including street trees:

(5) trees required per lot + (10) 1 tree per each additional 1,000 SF over 6,000 SF - (2) existing trees =

B. % Natives required: (13) Number of trees provided x 30% =

C. % Low maintenance / drought and salt tolerant required:

(13) Number of trees provided x 50%=

D. Street Trees (maximum average spacing of 20' o.c.):

45'-8" linear feet along street divided by 20'=

E. Street tree species allowed directly beneath power lines:

(maximum average spacing of 20' o.c.):

n/a linear feet along street divided by 20'=

SHRUBS

A. Number of shrubs required:

(13 ) Sum of lot and (2) street trees required x 12=

B. % Native shrubs required:

(180) Number of shrubs provided x 50%=

LARGE SHRUBS OR SMALL TREES

A. Number of large shrubs or small trees required:

(180) Number of required shrubs x 10%=

B. % Native large shrubs or small trees required:

(18) Number of large shrubs or small trees provided x 50%=

\* Note: See Open Space Diagrams on sheet L-3.03.

NATURALFICIAL, INC.   1844 W 23rd St. PROPOSED PLANT LIST: 2018.12.10									
QTY	ABRV.	BOTANICAL NAME	COMMON NAME	SPECIFICATIO	FL. NATIVE		DROUGHT TOLERANT		CANOPY MITIGATION CREDIT (SF)
TREES					YES	NO	YES	NO	
4	BSI	Bursera simaruba	Gumbo Limbo	14' ht. 4" DBH	X		X		N/A
2	CDI	Coccoloba diversifolia	Pigeon Plum	7G 3' ht.	X		X		N/A
LARGE SHRUBS									
2	PR	Pimenta racemosa	Bay Rum	10' ht.	X		X		N/A
SHRUBS									
20	GL	Gymnathes lucida	Crabwood	7G 3' ht.	X		X		N/A
13	HC	Heliconia caribaea	Heliconia	15G		X		X	N/A
11	MC	Myrica cerifera	Wax Myrtle	7G 3' ht.	X		X		N/A
37	MF	Myrcianthes fragrans	Simpson Stopper	7G 3' ht.	X		X		N/A
28	PL	Psychotria ligustrifolia	Bahama Coffee	18" ht.	X		X		N/A
8	REX	Rhapis excelsa	Lady Palm	8' ht.		X	X		N/A
41	SR	Serona repens	Silver Saw Palmetto	18" ht.	X		X		N/A
ACCENTS									
13	PC	Philodendron 'Congo Green'	Same	7G		X		X	N/A
GROUNDCOVERS									
1,010	NE	Nephrolepis exaltata 'Bostoniesis'	Boston fern	3G @ 12" O.C	X		X		N/A
296	TD	Tripsacum floridanum	Dwarf Fkahatchee Grass	7G @ 24" O.C	X		X		N/A
Total S.F. Of Trees Mitigated:									N/A
SOD									
TBD SF	ZJ	Zoysia japonica "Emerald -Hybrid"	Zoysia Grass	Within Property Line		X	X		
TBD SF	ZJ	Zoysia japonica "Emerald -Hybrid"	Zoysia Grass	Right-of-Way		X	X		
SUPPLEMENTAL									
TBD		Pine needle mulch (for planting beds)	T.B.D. by Landscape Contractor						
TBD		Planting Top Soil	T.B.D. by Landscape Contractor						
TBD		Fertilizer for initial plant installation	T.B.D. by Landscape Contractor						
		Plant and Tree Delivery							
		Site Prep, Grading, Final Site Clean up, Rock/Debris Removal							

Architecture  
Interior Design  
Urban Design  
Graphic Design

100 NE 38 Street  
Miami, FL 33137  
T 305 438 0609  
F 305 438 0170  
shulman-design.com  
AA 26001090

LANDSCAPE DESIGNER:

NATURALFICIAL, INC.

Andres Arcila  
6915 Red Road, Suite 224  
Coral Gables, FL 33143  
p: 305.321.2341  
www.naturalficial.com

LANDSCAPE ARCHITECT:

NATURALFICIAL INC.

6915 RED ROAD, SUITE 224.  
CORAL GABLES, FL 33143  
T. 786.717.6564  
M.305.321.2341  
W.WWW.NATURALFICIAL.COM  
FIRM REG. NO. LC26000548

DRB SUBMITTAL

1844 W 23RD ST

1844 W 23rd Street  
Miami Beach, FL, 33140

SINGLE FAMILY  
RESIDENCE

PETER ANSELMO, RLA  
FL# 6667221

No. Description Date

12/10/18

LANDSCAPE LEGEND  
AND  
PLANT LIST

L3.02

LANDSCAPE ARCHITECT:

NATURALFICIAL INC.

6915 RED ROAD, SUITE 224.  
CORAL GABLES, FL 33143  
T. 786.717.6564  
M.305.321.2341

W.WWW.NATURALFICIAL.COM  
FIRM REG. NO. LC26000548

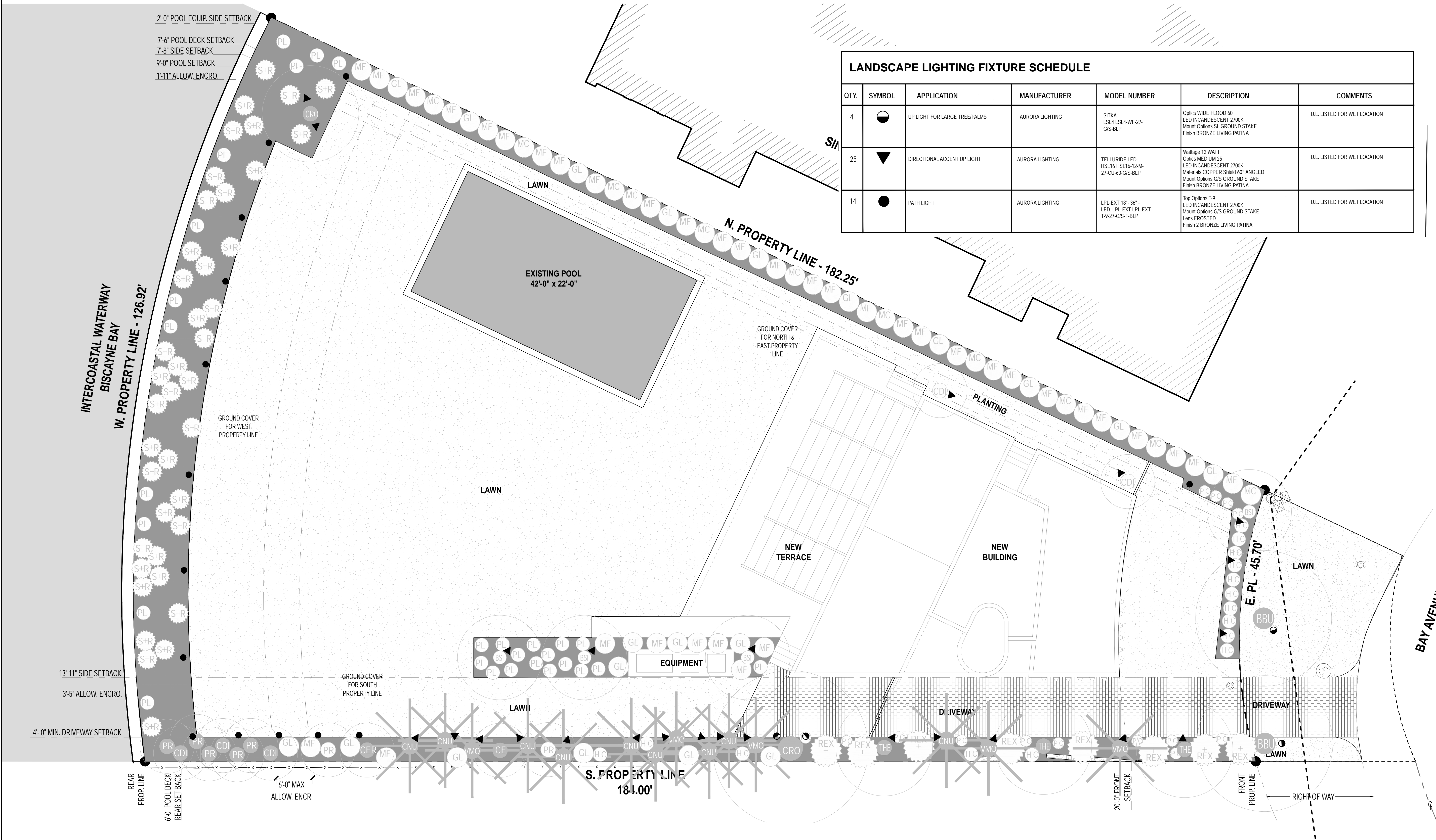


PETER ANSELMO, RLA  
FL# 6667221









LIGHTING SPECIFICATION GENERAL NOTES

1. GENERAL REQUIREMENTS

- A. Lighting fixtures and other lighting material shall be located as indicated on drawings and as further specified. This equipment shall embody maximum efficiency, obtain the highest standards of workmanship, electrical and mechanical design. All material shall be subject to the approval of the Lighting Consultant. Fixture parts and components shall be made of materials appropriate to their function and as such shall be resistant to corrosion and thermal and mechanical stresses encountered in the normal application and functioning of the fixtures. The Electrical Contractor shall be responsible for installing fixtures with proper vents as not to exceed the temperature rating of the lighting fixtures or lamps.
- B. Locations of fixtures are shown diagrammatically. Final locations to be determined by the Landscape Designer and or Lighting Consultant on-site after the installation of the trees.
- a. Notify the Lighting Consultant about field conditions at variance with plans and/or specifications before commencing installation.
- b. Coordinate conditions at variance with other trades before installation of fixtures.

- C. Luminaires shall be delivered to the premises complete (except as noted or specified), including mounting devices and components necessary for the proper installation and operation of the equipment. Luminaries shall include lamps.
- D. Blemished, damaged or unsatisfactory fixtures shall be replaced in a manner satisfactory to the Lighting Consultant and Landscape Designer.
- E. Electrical Contractor to install louvers, spread lenses and color filters as specified and provide labor to focus all adjustable fixtures. Additionally, Electrical Contractors shall provide for 4 non - consecutive days to adjust aiming, lamping and coloring of lighting fixtures, with the direction of the Lighting Consultant and Landscape Designer. This may include relamping fixtures with different wattages or beam spreads as directed by Lighting Consultant or Landscape Designer. Electrical Contractor to provide ladders and lifts as necessary.

1. WARRANTY

- A. All lighting fixtures shall be covered by a minimum two year warranty covering workmanship or material. If the fixtures are supplied by the installing contractor the guarantee shall include the labor to replace defective fixtures.

LANDSCAPE LIGHTING FIXTURE SCHEDULE						
QTY.	SYMBOL	APPLICATION	MANUFACTURER	MODEL NUMBER	DESCRIPTION	COMMENTS
4	●	UP LIGHT FOR LARGE TREE/PALMS	AURORA LIGHTING	SITKA: LSL4 LSL4-WF-27-GS-BLP	Optics: WIDE FLOOD 40 LED INCANDESCENT 2700K Mount Options: SL GROUND STAKE Finish: BRONZE LIVING PATINA	U.L. LISTED FOR WET LOCATION
25	▼	DIRECTIONAL ACCENT UP LIGHT	AURORA LIGHTING	TELLURIDE LED: HSL16 HSL16-124-M 27-CU-60-G/S-BLP	Wattage: 12 WATT Optics: MEDIUM 25 LED INCANDESCENT 2700K Materials: COPPER Shield 60° ANGLED Mount Options: G/S GROUND STAKE Finish: BRONZE LIVING PATINA	U.L. LISTED FOR WET LOCATION
14	●	PATH LIGHT	AURORA LIGHTING	LPL-EXT 18" - 36" - LED: LPL-EXT LPL-EXT- T-9-27-G/S-F-BLP	Top Options: T-9 LED INCANDESCENT 2700K Mount Options: G/S GROUND STAKE Lens: FROSTED Finish: 2 BRONZE LIVING PATINA	U.L. LISTED FOR WET LOCATION

Shulman + Associates

Architecture  
Interior Design  
Urban Design  
Graphic Design

100 NE 38 Street  
Miami, FL 33137  
T 305 438 0609  
F 305 438 0170  
shulman-design.com  
AA 26001090

LANDSCAPE DESIGNER:

NATURALFICIAL, INC.

Andres Arcila  
6915 Red Road, Suite 224  
Coral Gables, FL 33143  
p: 305.321.2341  
www.naturalficial.com

LANDSCAPE ARCHITECT:

NATURALFICIAL INC.

6915 RED ROAD, SUITE 224.  
CORAL GABLES, FL 33143  
T. 786.717.6564  
M. 305.321.2341  
WWW.NATURALFICIAL.COM  
FIRM REG. NO. LC26000548

DRB SUBMITTAL

1844 W 23RD ST

1844 W 23rd Street  
Miami Beach, FL, 33140

SINGLE FAMILY  
RESIDENCE

PETER ANSELMO, RLA  
FL# 6667221

No. Description Date

12/10/18

LANDSCAPE  
LIGHTING PLAN

L4.00