

SCOPE OF WORK

THE FOLLOWING DRAWINGS ILLUSTRATE THE PROPOSED LANDSCAPE SCOPE OF WORK FOR A NEW RESIDENTIAL PROJECT ON PROPERTY LOCATED IN THE NAUTILUS NEIGHBORHOOD OF THE CITY OF MIAMI BEACH.

- RESIDENTIAL TREE REMOVAL AND ON SITE MITIGATION.
- RESIDENTIAL LANDSCAPE PLANTING
- RESIDENTIAL LANDSCAPE IRRIGATION
- RESIDENTIAL LANDSCAPE SITE LIGHTING

09/07/18 DRB SUBMISSION
08/16/18 DRB PRELIMINARY

SHEET INDEX

| LANDSCAPE DRAWINGS | | DRAWING NOTES |
|--------------------|--------|---------------------------------------|
| ■ ■ | LCVR | COVER PAGE |
| ■ ■ | TD100 | TREE DISPOSITION NOTES/SCHEDULE |
| ■ ■ | TD101 | TREE DISPOSITION PLAN |
| ■ ■ | L200 | MATERIALS NOTES AND SPECIFICATIONS |
| ■ ■ | L201 | MATERIALS PLAN |
| ■ ■ | L400 | PLANTING NOTES AND SCHEDULE |
| ■ ■ | L401 | PLANTING PLAN |
| ■ ■ | L400.1 | LANDSCAPE LEGEND |
| ■ ■ | L450 | PLANTING DETAILS |
| ■ ■ | L800 | SITE LIGHTING NOTE AND SPECIFICATIONS |
| ■ ■ | L801 | SITE LIGHTING PLAN |
| ■ ■ | IR100 | IRRIGATION DETAILS |
| ■ ■ | IR101 | IRRIGATION DETAILS |
| ■ ■ | IR200 | IRRIGATION NOTES AND PLAN |



Designer/
Landscape Architect

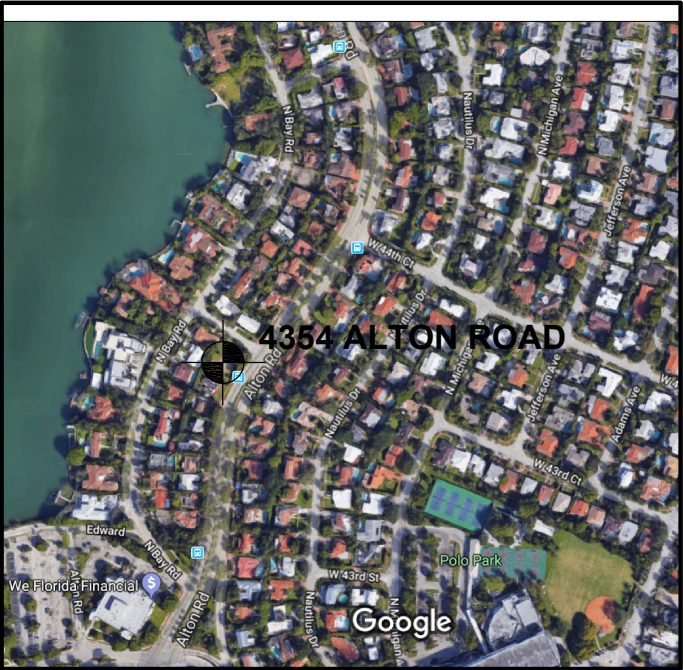
PROJECT:
4354 ALTON
ROAD
RESIDENCES

4354 ALTON RD.
MIAMI BEACH,
FLORIDA, 33139

DRAWING:

PROJECT COVER

SOUTH RESIDENCE



NORTH

LCVR

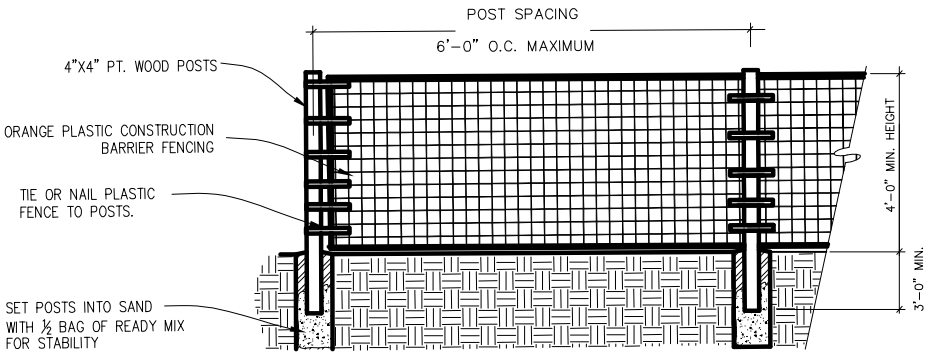
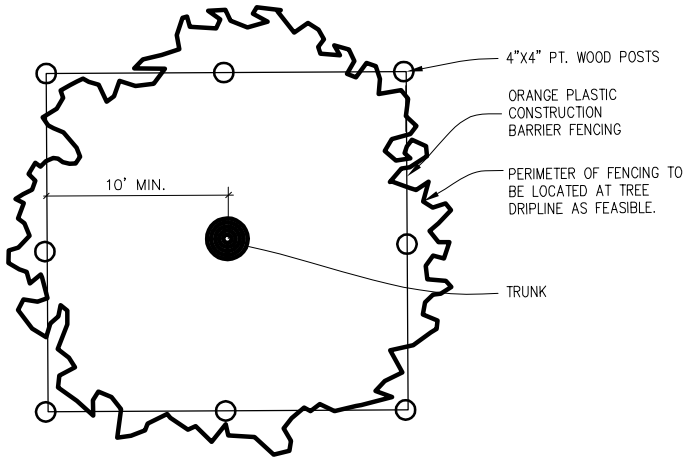
TREE DISPOSITION SCHEDULE

| TREE No. | TREE - LATIN NAME | TREE - COMMON NAME | DIAMETER at BREAST HEIGHT (in inches) | MULTI TRUNK | OVERALL HEIGHT (in feet) | CANOPY DIAMETER (in feet) | CANOPY (in Sq. Ft.) | DISPOSITION | CONDITION | REMOVAL- MUNICIPAL CRITERIA AND NOTES | | |
|--------------|----------------------|--------------------|---------------------------------------|-------------|--------------------------|---------------------------|---------------------|-------------|-----------|---------------------------------------|----------------|--------------------|
| | | | | | | | | | | CRITERIA | CANOPY SQ. FT. | ROW CANOPY SQ. FT. |
| 5 | PTYCHOSPERMA ELEGANS | SOLITAIRE PALM | 5 | | 13 | 10 | 79 | REMAIN | GOOD | | | |
| 6 | ADONIDIA MERRILLII | CHRISTMAS PALM | 8 | X | 14 | 14 | 154 | REMOVE | FAIR | CONFLICTS WITH NEW CONSTRUCTION | 154 | |
| 15 | PERSEA AMERICANA | AVOCADO | 15 | | 22 | 20 | 314 | REMOVE | FAIR | EXEMPT FROM MITIGATION | | |
| STREET TREES | | | | | | | | | | | | |
| | | | | | | | | | | | | |
| | | | | | | | | | | | | |
| | | | | | | | | | | | | |

| | | | |
|-------------------------------------------------------------|---|----------------------------------------------------------|-----------------------------------------|
| UNITS REMOVED FROM ROW | | - | |
| UNITS REMOVED | | 154 | |
| TOTAL UNITS REMOVED: | | 154 | |
| PROPOSED ON SITE MITIGATION BREAKDOWN | | | |
| | | credit/tree | TREE CREDIT |
| CATEGORY 1 TREE 2" CAL/12' HT MIN: | 3 | 300 | Category 1 Tree = 300sf credit/tree 900 |
| CATEGORY 2 TREE 2" CAL/10' HT MIN: | 2 | 150 | Category 2 Tree = 150sf credit/tree 300 |
| CATEGORY 3 TREE 2" CAL/8' HT MIN: | - | 100 | Category 3 Tree = 100sf credit/tree - |
| **FOR MITIGATION ONLY** CATEGORY 4 PALM 6' CLR TRUNK MIN: | - | 50 | Category 4 Palm = 50sf credit/tree - |
| TOTAL PROPOSED REPLACEMENT TREES (REFER TO PLANTING PLANS): | 5 | COMBINATION FULFILLS SITE MITIGATION OF CANOPY SF: 1,200 | |

TRANSPLANTING SPECIFICATIONS

- 1.Root prune all trees and palms to a minimum depth of 24” for the palms and 48” for the trees.
- 2.Trim frayed roots with clippers saws or similar and leave clean cuts.
- 3.Wrap balls with shrink wrap plastic, back filling with Shredded peat moss, fill up voids between plastic & ball, covering all cut roots.
- 4.Backfill with existing soil to hold plastic firmly against newly wrapped ball. Keep 2” deep trench exposed so as to find root ball when harvesting.
- 5.Water three times per week for next 2 months or until trees are ready to move.
- 6.Harvest palms after 5 weeks minimum and trees after 8 to 10 weeks depending on size. Consult with LA prior to moving on schedule.
- 7.Re–dig holes well outside the pastic plant wrap being careful not to disturb or tear, preserving root ball, re–wrap if needed for transplanting.
- 8.When digging trees, break off large piece of existing coral rock, +/- 36” deep as feasible, by under cutting ball. Do Not Peel Ball off Rock.. If necessary, the horizontal chipping or drilling may be required to break off specimen Oak ball at a minimum 30” depth
- 9.Replant transplanted trees and palms at correct height in new location, keeping original ball top exposed.
10. Properly wrap and hook–up trees and palms to lifting equipment in such a way as to not tear cambium layer and exessivly disfigure appearance.
11. Plants that are not properly lifted and die due to girdling, compression or excessive damage to the cambium layer will be charged to the G.C. and Sub–contractor at a rate of \$500 per caliper inch.
12. Remove plastic, backfill with 50% existing soil blended with 50% planting soil plus ¼ bale of Canadian peat moss for palms and ½ bale for trees.
13. Backfill, sink, place in Agriform fertilizer tablets per recommendations, brace, and trim broken branches and fronds as needed. Brace per specification.
14. Water daily for duration of overall job will be required. Having bubblers as part of automatic irrigation system for post construction can supplement additional drenching, but are not a sustitution.



TREE PROTECTION FENCE DETAIL

SCALE: NTS



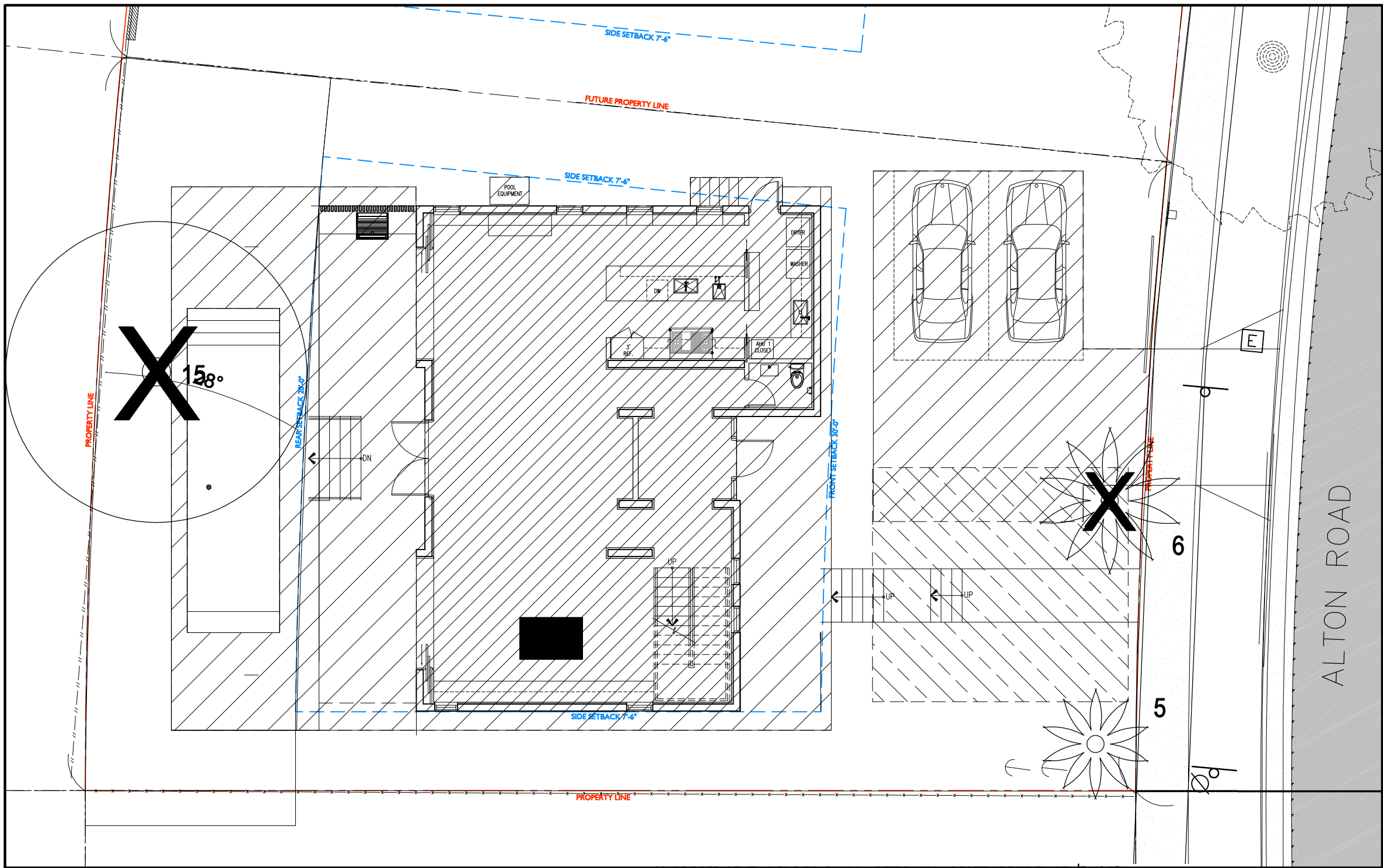
Designer/
Landscape Architect

PROJECT:
4354 ALTON
ROAD
RESIDENCES

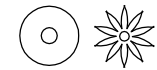
4354 ALTON RD.
MIAMI BEACH,
FLORIDA, 33139

DRAWING:

TREE DISPOSITION
NOTES, SCHEDULE
AND
TREE PROTECTION
DETAIL



LEGEND



EXISTING TREES & PALMS



EXISTING TREES & PALMS
TO BE REMOVED



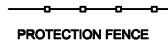
EXISTING TREES & PALMS TO BE
RELOCATED



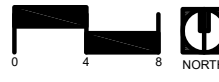
PROPOSED BUILDING/HARDSCAPE



CONSTRUCTION PARKING



PROTECTION FENCE



MATERIALS NOTES

1. CONTRACTOR TO VERIFY ALL QUANTITIES. IN CASE OF ANY DISCREPANCIES, GRAPHICALLY SHOWN MATERIAL QUANTITIES SHALL TAKE PRECEDENCE.
2. ALL CONSTRUCTION AND MATERIALS NOT SPECIFICALLY ADDRESSED IN THE CONTRACT DOCUMENTS OR SPECIFICATIONS SHALL BE IN ACCORDANCE WITH LOCAL, STATE AND FEDERAL JURISDICTIONS AND GOVERNING BODIES/AGENCIES STANDARDS.
3. THE CONTRACTOR SHALL PROVIDE A FULL–SCALE MOCKUP AND RECEIVE APPROVAL FROM THE LANDSCAPE ARCHITECT FOR ALL SYSTEMS BEFORE BEGINNING CONSTRUCTION OF PAVEMENT.
4. EXPANSION JOINTS SHALL BE PROVIDED WHERE FLATWORK MEETS VERTICAL STRUCTURES, SUCH AS WALLS, CURBS, STEPS, AND OTHER HARDSCAPE ELEMENTS. EXPANSION JOINTS SHALL ALSO BE PROVIDED AT MATERIAL CHANGES. EXPANSION JOINT MATERIALS/METHODS SHALL BE SUBMITTED TO THE LANDSCAPE ARCHITECT FOR REVIEW AND APPROVAL PRIOR TO INSTALLATION.
5. CONTROL JOINTS SHOULD BE SPACED NO GREATER THAN TEN (10) LINEAR FEET MAXIMUM, UNLESS OTHERWISE SPECIFIED. EXPANSION JOINTS SHOULD BE SPACED NO GREATER THAN FORTY (40) LINEAR FEET MAXIMUM, UNLESS OTHERWISE SPECIFIED. CONTRACTOR SHALL ADVISE ON OTHER JOINTS AS NEEDED TO MINIMIZE CRACKING. THIS INFORMATION SHALL BE SUBMITTED TO THE LANDSCAPE ARCHITECT FOR REVIEW AND APPROVAL PRIOR TO INSTALLATION.
6. CONTROL JOINTS SHALL BE PROVIDED AS SPECIFIED IN THE CONTRACT DOCUMENTS. CONTROL JOINT MATERIALS, METHODS AND RECOMMENDATIONS ON ADDITIONAL CONTROL JOINTS TO MINIMIZE CRACKING SHALL BE SUBMITTED TO THE LANDSCAPE ARCHITECT FOR REVIEW AND APPROVAL.
7. ALL STEPS SHALL HAVE TWELVE (12) INCH TREADS AND SIX (6) INCH RISERS, UNLESS OTHERWISE SPECIFIED.
8. HOLD TOP OF WALLS AND FENCES LEVEL, UNLESS OTHERWISE SPECIFIED.
9. CONTRACTOR SHALL NOT INSTALL WORK LOCATED ON TOP OF ARCHITECTURAL STRUCTURES WITHOUT FIRST REVIEWING ARCHITECTURAL DRAWINGS.
10. SAMPLES OF SPECIFIED MATERIALS SHALL BE SUBMITTED TO THE LANDSCAPE ARCHITECT FOR REVIEW AND APPROVAL PRIOR TO ORDERING FOR JOB.



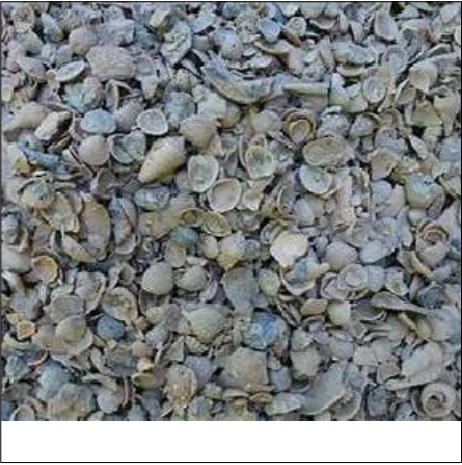
PAVING I: UNIT PAVERS

MATERIAL: HANOVER– PREST PLANKSTONE PAVERS
COLOR: GRAY/SLATE
FINISH: STD
LOCATION: MOTORCOURT



PAVING II: WOOD

MATERIAL: IPE
COLOR: OILED
FINISH: FACTORY SANDED
LOCATION: PORCH, TERRACE AND DECK



PAVING III: CRUSHED SHELL

MATERIAL: OLIMAR STONE, FLORIDA MIX
COLOR: STANDARD
FINISH: NA
LOCATION: SERVICE WALKWAY



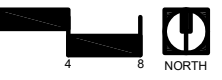
Designer/
Landscape Architect

PROJECT:
4354 ALTON
ROAD
RESIDENCES

4354 ALTON RD.
MIAMI BEACH,
FLORIDA, 33139

DRAWING:

MATERIALS NOTES
AND
SPECIFICATIONS



ALL DRAWINGS AND WRITTEN MATERIAL APPEARING HEREIN CONSTITUTE THE ORIGINAL AND UNPUBLISHED WORK OF Mc G ARCHITECTURE AND MAY NOT BE REPRODUCED, COPIED, IMITATED, USED OR DISCLOSED WITHOUT THE EXPRESS WRITTEN CONSENT OF Mc G ARCHITECTURE & PLANNING, INC. (c) 2018

SCALE: _____
CHECK: MCK
DATE: 07/09/2018
SHEET NUMBER _____

MATERIALS LEGEND



PROPOSED WOOD PAVING



PROPOSED UNIT PAVING



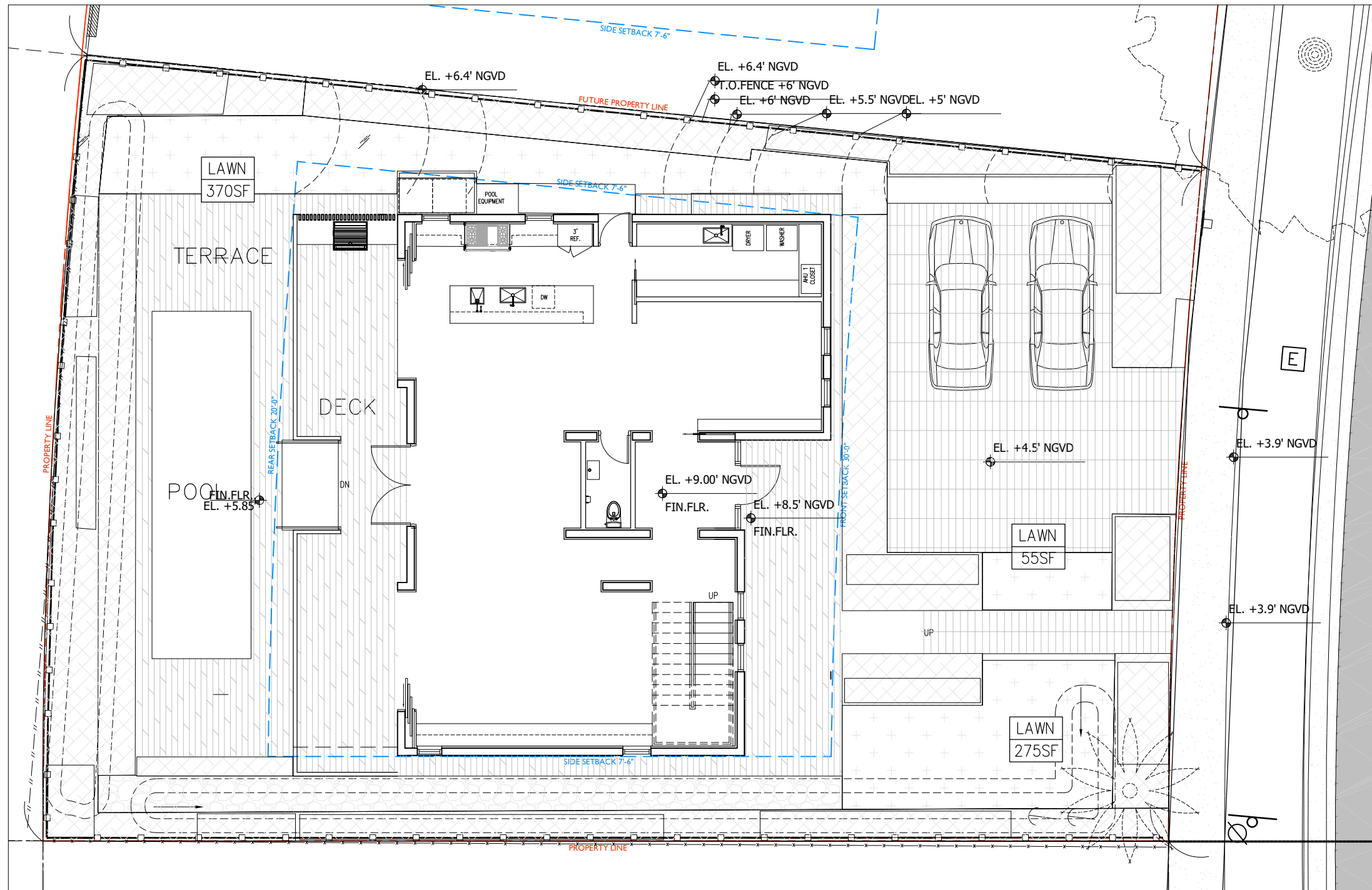
PROPOSED CRUSHED
STONE/SHELL PAVING



PROPOSED PLANTING



PROPOSED LAWN



PLANTING NOTES

1. PLANT MATERIAL IS TO BE HEALTHY SPECIMENS FREE FROM DISEASE OR DAMAGE, AND IS TO BE MAINTAINED IN EXCELLENT CONDITION WHILE ON THE JOBSITE. LANDSCAPE ARCHITECT SHALL INSPECT PLANT MATERIAL UPON ARRIVAL TO JOBSITE AND WILL REJECT PLANT MATERIAL THAT DOES NOT MEET THE STANDARDS DESCRIBED WITHIN THE CONTRACT DOCUMENTS.
2. THE LANDSCAPE ARCHITECT WILL PERIODICALLY INSPECT PLANT MATERIAL STOCKPILED AND/OR PLANTED ON SITE DURING THE COURSE OF CONSTRUCTION. PLANT MATERIAL NOT MEETING THE STANDARDS CONTAINED WITHIN CONTRACT DOCUMENTS SHALL BE REPLACED AT NO COST TO THE OWNER.
3. PRESERVE & PROTECT ALL EXISTING VEGETATION INDICATED TO REMAIN AT ALL TIMES.
4. PROVIDE MATCHING SIZES AND FORMS FOR EACH PLANT OF THE SAME SPECIES UNLESS OTHERWISE INDICATED.
5. CONTRACTOR TO VERIFY ALL QUANTITIES. IN CASE OF DISCREPANCIES, GRAPHICALLY SHOWN QUANTITIES SHALL TAKE PRECEDENCE.
6. ALL MATERIALS USED SHALL CONFORM TO THE GUIDELINES ESTABLISHED BY THE CURRENT AMERICAN STANDARDS FOR NURSERY STOCK, PUBLISHED BY THE AMERICAN ASSOCIATION OF NURSERYMEN.
7. ALL PLANT MATERIAL SHALL BE INSTALLED PLUMB AND PER THE SPECIFICATIONS CONTAINED WITHIN THE CONTRACT DOCUMENTS. ANY NECESSARY STAKING AND/OR OTHER SUPPORTS MATERIALS/METHODS SHALL BE SUBMITTED TO THE LANDSCAPE ARCHITECT FOR REVIEW AND APPROVAL PRIOR TO INSTALLATION.
8. THE CONTRACTOR SHALL PRUNE EXISTING AND/OR NEW TREES ONLY PER LANDSCAPE ARCHITECT DIRECTION.
9. THE CONTRACTOR SHALL STAKE THE LOCATIONS OF ALL TREES AND B&B SHRUBS FOR LANDSCAPE ARCHITECT REVIEW AND APPROVAL, PRIOR TO INSTALLATION.
10. ALL ROOT-WRAPPING MATERIALS THAT ARE NOT BIO-DEGRADABLE SHALL BE REMOVED FROM THE ROOT BALL. ROOT BALLS SHALL BE FREE OF WEEDS.
11. SPECIFIED PLANT MATERIAL SIZES SHALL BE CONSIDERED MINIMUM SIZES.
12. FINISH GRADE OF PLANTING BEDS SHALL BE TWO (2) INCHES BELOW ADJACENT FLATWORK, UNLESS SPECIFIED OTHERWISE.
13. MULCH OR PLANTING BED DRESSING SHALL BE PLACED IN ALL PLANTING AREAS AS SPECIFIED. MULCH OR PLANTING BED DRESSING SHALL NOT BE PLACED WITHIN SIX (6) INCHES OF TREE TRUNKS. MULCHING SHOULD BE REPEATED ANNUALLY DURING THE AUTUMN TO A THREE (3) INCH DEPTH.
14. ALL PLANT MATERIAL SHOULD RECEIVE AN ORGANIC FERTILIZER IN LIMITED APPLICATION FOLLOWING INSTALLATION. TYPE AND APPLICATION RATE AND METHOD OF APPLICATION TO BE SPECIFIED BY THE CONTRACTOR AND APPROVED BY THE LANDSCAPE ARCHITECT.
15. EXCESS FERTILIZER SHALL BE DISPOSED OF PROPERLY OFF-SITE. IT SHALL NOT BE DISPOSED OF IN STORM DRAINS AND/OR DRYWELLS.
16. STOCKPILED PLANT MATERIAL TO BE PLACED IN THE SHADE AND PROPERLY HAND-WATERED UNTIL PLANTED.
17. MULCH ALL BEDS WITH 2-3" AT TIME OF PLANTING. REFER TO PLANTING DETAILS FOR MULCH SPECIFICATIONS. REPLENTISH MULCH AS REQUIRED OVER THE COURSE OF THE GUARANTEE PERIOD TO ENSURE ADEQUATE COVERAGE.
18. SIX (6) INCH PLANT MIX SHALL BE PROVIDED FOR ALL LAWN, TURF, AND NATIVE PLANTING ZONES. 18 INCH PLANT MIX SHALL BE PROVIDED FOR ALL PERENNIAL PLANTING BEDS UNLESS OTHERWISE NOTED.
19. LANDSCAPE CONTRACTOR TO PAINT ALL TREE & PALM SUPPORTS WITH BENJAMIN MOORE ARBORCOAT ASHLAND SLATE EXTERIOR WOOD PAINT. ALL BRACING CUTS TO BE NEAT AND CLEAN, NO CHAINSAW CUTS.
20. GUARANTEE PERIOD: CONTRACTOR IS RESPONSIBLE FOR SITE MAINTENANCE AND MATERIAL REPLACEMENT FOR ONE YEAR FROM THE DATE OF SUBSTANTIAL COMPLETION. REMOVE AND REPLACE ALL DEAD PLANT MATERIAL OR MATERIAL WHICH IS FAILING AS DETERMINED BY ARBORIST AND LANDSCAPE ARCHITECT. CORRECT DEFICIENCIES WITH MULCH AND IRRIGATION.
21. MAINTENANCE PLAN: DURING THE GUARANTEE PERIOD CONTRACTOR SHALL PERFORM THE FOLLOWING TASKS ON A REGULARLY SCHEDULED BASIS. WEEKLY WATERING (JAN-APR) WHEN IRRIGATION SYSTEMS ARE NOT OPERATIONAL. WEEKLY SITE INSPECTION FOR PLANT HEALTH, TREE/PALM GUYING, IRRIGATION OPERATION. QUARTERLY FERTILIZATION (MAR-SEPT) APPROPRIATE FOR MATERIAL (REF IFAS PUBLICATION ENH858) WEEKLY MOWING OF LAWNS AND PLANT BED WEEDING DURING THE GROWING AND SHOULDER SEASONS. MONTHLY VISITS FOR SAME OVER WINTER.

PLANTING SCHEDULE

| TYPE | ABR. | QUANTITY | BOTANICAL NAME | COMMON NAME | SPECIFICATIONS |
|-------|------|----------|--------------------|---------------|-----------------|
| PALMS | | | | | |
| | BNO | 2 | BISMARCKIA NOBILIS | BISMARCK PALM | 10' GW, MATCHED |
| | DCA | 3 | DYPSIS CABADAE | CABADA PALM | 45 GAL |
| | DCA | 3 | DYPSIS CABADAE | CABADA PALM | 100 GAL |

| | | | | | |
|-------|-----|---|------------------------|---------------------------------|------------------------|
| TREES | | | | | |
| */** | ACH | 2 | ACACIA CHORIOPHYLLA | CINNECORD | 2" CAL. & 12' HT. MIN. |
| ** | CGR | 3 | CAESALPINIA GRANADILLO | BRIDAL VEIL- 4' CLR TRUNK | 3" CAL. & 14' HT. MIN. |
| */** | CRO | 1 | CLUSIA ROSEA | AUTOGRAPH TREE | 4" CAL. & 16' HT. MIN |
| */** | CUV | 1 | COCOLOBA UVIFERA | SEA GRAPE- MULTI-TRUNK SPECIMEN | 3" CAL. & 14' HT. MIN |
| */** | PPT | 1 | PELTOPHORUM PTERCARPUM | COPPER POD | 2" CAL. & 12' HT. MIN. |
| */** | QVI | 1 | QUERCUS VIRGINIANA | LIVE OAK- SPECIMEN | 3" CAL. & 14' HT. MIN. |

| | | | | | |
|---------------------------------|-----|---|----------------------|--------------------------------|-------------------------|
| UNDERSTORY TREES / LARGE SHRUBS | | | | | |
| | GLU | 2 | GYMNANTHES LUCIDA | CRABWOOD- MULTI TRUNK | 6' HT. & 4' SPREAD MIN. |
| | MFR | 5 | MYRCIANTHES FRAGRANS | SIMPSON STOPPER- LOW BRANCHING | 6' HT. & 4' SPREAD MIN. |

| | | | | | |
|------------------|-----|----|--------------------------------|-------------------|-----------------------------|
| ACCENTS / SHRUBS | | | | | |
| | AG | 12 | ARGUSIA GNAPHALODES | SEA LAVANDER | 7 GAL |
| | BA | 7 | BRUNFELSIA AMERICANA | LADY OF THE NIGHT | 3 GAL |
| | CWI | 8 | CANELLA WINTERANA | CINNAMON BARK | 15 GAL |
| | CO | 11 | COLOCASIA 'BLACK MAGIC' | BLACK TARO | 7 GAL |
| | Cs | 8 | COLOCASIA SPECIES | TARO | 7 GAL |
| | EFE | 1 | ENCEPHALARTOS FEROX | ZULULAND CYCAD | 15 GAL |
| | EAX | 2 | EUGENIA AXILLARIS | WHITE STOPPER | 15 GAL, BUSH FORM |
| | ECO | 4 | EUGENIA CONFUSA | REDBERRY STOPPER | 15 GAL, BUSH FORM |
| | MD | 7 | MONSTERA DELICIOUSA | MONSTERA | 3 GAL |
| | HC | 3 | HELICONIA CARIBAEA | WILD PLANTAIN | 7 GAL |
| | HR | 6 | HELICONIA ROSTRATA | LOBSTER CLAW | 15 GAL |
| | PM | 23 | PODOCARPUS MACROPHYLLUS | JAPANESE YEW | 25 GAL. 6' HT MIN., MATCHED |
| | RE | 11 | RUSSELIA EQUISETIFORMIS | FIRECRACKER | 3 GAL |
| | ZI | 2 | ZAMIA INTEGRIFOLIA (FLORIDANA) | COONTIE | 7 GALLON |

| | | | | | |
|------------|----|----|---------------------------|-------------------------|----------|
| GROUNCOVER | | | | | |
| | LM | 56 | LIRIOPE MUSCARI | LILY TURF | 1 GALLON |
| | MS | 96 | MICROSORUM SCOLOPENDRIA | WART FERN | 1 GALLON |
| | PB | 84 | PHILODENDRON BURLE MARX | PHILODENDRON BURLE MARX | 1 GALLON |
| | TA | 57 | TRACHELOSPERMUM ASIATICUM | CREEPING JASMINE | 1 GALLON |

| | | | | | |
|--------------------|-----|---|-----------------------|-------------------|----------|
| ORNAMENTAL GRASSES | | | | | |
| | SBA | 4 | SPARTINA BAKERI | SAND CORDGRASS | 7 GALLON |
| | TDA | 3 | TRIPSACUM DACTYLOIDES | FAKAHATCHEE GRASS | 7 GALLON |

| | | | | | |
|------|------|--------|-------------------------|---------------------|-----|
| LAWN | | | | | |
| | LAWN | 690 SF | STENOTAPHRUM SECUNDATUM | ST. AUGUSTINE GRASS | SOD |

TREE AND PALM ALLOCATION LEGEND

- * MITIGATION
- ** STREET TREE
- *** SITE LANDSCAPE

DEFINITIONS

1. TREE: ANY SELF SUPPORTING WOODY PLANT OR PALM WHICH USUALLY HAS A MAIN AXIS OR TRUNK. 12' HT, 6' CANOPY DIA. AND 2" CAL. TRUNK MINIMUM AT TIME OF PLANTING.
2. STREET TREE: A SPECIES TYPICALLY GROWN IN MIAMI BEACH WHICH NORMALLY MATURES TO A HEIGHT OF AT LEAST 20'. 12' HT., 3" CAL. TRUNK AND 4' CLR TRUNK MINIMUM AT TIME OF PLANTING. MAXIMUM AVERAGE TREE SPACING 20' O.C. (CITY DISCRETION ALLOWED DEPENDING ON SITE CONDITIONS).
3. PALMS (STREET TREES): SINGLE TRUNK SPECIES. 15' CLEAR WOOD AND 10" DBH TRUNK MINIMUM AT TIME OF PLANTING. PALMS SHALL NOT COUNT TOWARD THE REQUIRED STREET TREES.
4. LARGE SHRUB - SMALL TREE: NORMALLY MATURES AT MINIMUM HEIGHT OF 10'. 6' HT. AND 4' CANOPY DIA. MINIMUM AT TIME OF PLANTING.



7580 NE 4th Court
Studio 100
Miami, FL 33138

PROJECT NUMBER
1819



Designer/
Landscape Architect

PROJECT:
4354 ALTON
ROAD
RESIDENCES

4354 ALTON RD.
MIAMI BEACH,
FLORIDA, 33139

DRAWING:

PLANTING NOTES
& SCHEDULE

MARSH C. KRIPLEN FLORIDA LIC# LA6667007
ALL DRAWINGS AND WRITTEN MATERIAL APPEARING HEREIN CONSTITUTE THE ORIGINAL AND UNPUBLISHED WORK OF MCG ARCHITECTURE AND MAY NOT BE DUPLICATED, USED OR DISCLOSED WITHOUT THE EXPRESS WRITTEN CONSENT OF MCG ARCHITECTURE & PLANNING, INC. (c) 2018
SCALE:
CHECK: MCK
DATE: 07/09/2018
SHEET NUMBER



Designer/
Landscape Architect

PROJECT:
4354 ALTON
ROAD
RESIDENCES

4354 ALTON RD.
MIAMI BEACH,
FLORIDA, 33139

DRAWING:

LANDSCAPE
LEGEND

MARSH C. KRIPLEN FLORIDA LIC# LA6667007

ALL DRAWINGS AND WRITTEN MATERIAL APPEARING
HEREIN CONSTITUTE THE ORIGINAL AND UNPUBLISHED
WORK OF MCG ARCHITECTURE AND MAY NOT BE
DUPLICATED, USED OR DISCLOSED WITHOUT THE
EXPRESS WRITTEN CONSENT OF MCG ARCHITECTURE &
PLANNING, INC. (c) 2018

SCALE:

CHECK:

MCK

DATE:

07/09/2018

SHEET NUMBER

LANDSCAPE LEGEND

MUNICIPALITY: City of Miami Beach

ZONING CLASS: **RS-4**

LOT AREA: 6,500

ACRES: 0.1492

ORDINANCE/CODE SECTION: CITY OF MIAMI BEACH SECTION 126

STREET TREES

| | | | |
|----|--------------------------------------------------------------|----------|----------|
| A. | Street trees (maximum average spacing of 30' o.c.) | <u>2</u> | <u>2</u> |
| | Linear ft of street frontage: <u>60</u> | | |
| | Multiplier: <u>30</u> | | |
| | Percentage of Palms counted toward Street Trees on 1:1 basis | <u>1</u> | <u>1</u> |
| | Multiplier: <u>30%</u> | | |
| B. | Street trees directly below power lines | <u>0</u> | <u>0</u> |
| | Linear ft of street frontage: <u>0</u> | | |
| | Multiplier: <u>25</u> | | |

One site tree (CUV) being counted toward street tree requirements)

SHRUBS

| | | | |
|----|-----------------------------------------|-----------|-----------|
| A. | Number of shrubs required | <u>72</u> | <u>72</u> |
| | Lot and street trees required: <u>6</u> | | |
| | Multiplier: <u>12</u> | | |
| B. | % Native species required | <u>36</u> | <u>36</u> |
| | Shrubs provided: <u>72</u> | | |
| | Multiplier: <u>50%</u> | | |

LARGE SHRUBS OR SMALL TREES

| | | | |
|----|------------------------------------------------------|----------|----------|
| A. | Number of large shrubs or small tree required | <u>7</u> | <u>7</u> |
| | Shrubs required: <u>72</u> | | |
| | Multiplier: <u>10%</u> | | |
| B. | % Native species required | <u>4</u> | <u>4</u> |
| | Shrubs provided: <u>7</u> | | |
| | Multiplier: <u>50%</u> | | |

OPEN SPACE

| | | | |
|----|-------------------------------------------------|--------------|--------------|
| A. | Sq. Ft. of required Open Space | <u>4,550</u> | <u>4,857</u> |
| | Lot area: <u>6,500</u> | | |
| | Multiplier: <u>70%</u> | | |
| B. | Sq. Ft. of parking lot open space | <u>20</u> | <u>0</u> |
| | Parking Spaces: <u>2</u> | | |
| | Multiplier: <u>10</u> sf/space | | |
| C. | Total Sq. Ft. of landscaped Open Space required | <u>4,570</u> | <u>4,857</u> |

LAWN AREA

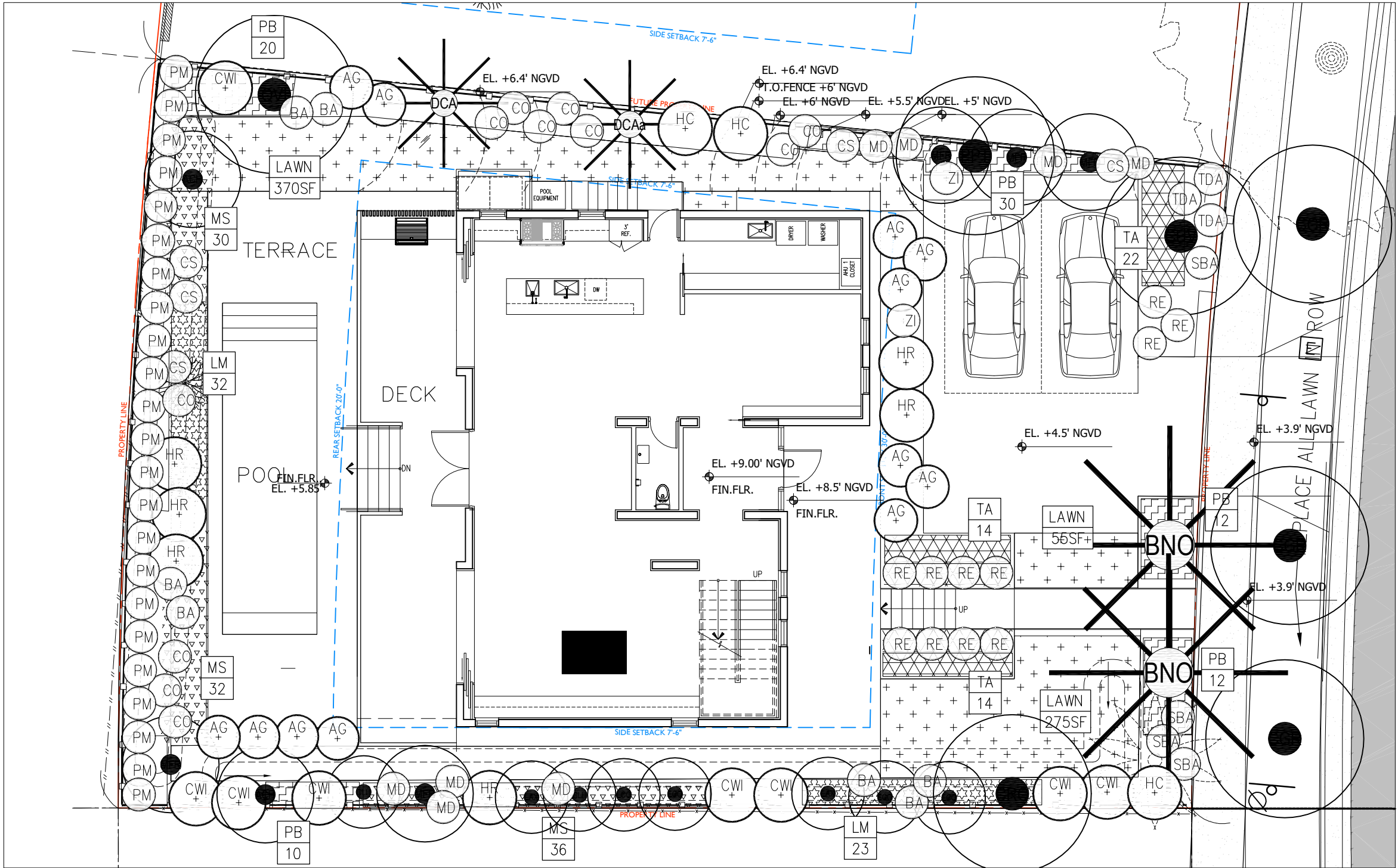
| | | | |
|----|-----------------------------------------------|--------------|--------------|
| A. | Total Sq. Ft. of landscaped Open Space | <u>4,570</u> | <u>4,857</u> |
| B. | Maximum Lawn Area (sod) permitted- | <u>2,285</u> | <u>690</u> |
| | Open space required: <u>4,570</u> | | |
| | Multiplier: <u>50%</u> | | |

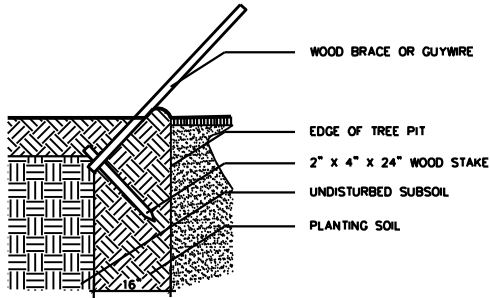
TREES

| | | | |
|----|----------------------------------------------------------------|-----------|-----------|
| A. | Number of trees required per lot, less existing trees | <u>6</u> | <u>6</u> |
| | Required Trees/Lot: <u>6</u> | | |
| | Net lot acres: <u>0.1492</u> | | |
| | Required Trees: <u>6</u> | | |
| | Existing trees: <u>0</u> | | |
| B. | % Palms allowed | <u>na</u> | <u>na</u> |
| | Palms allowed 1:1 for mitigation only. | | |
| C. | % Native required | <u>2</u> | <u>1</u> |
| | Trees provided: <u>5</u> | | |
| | Multiplier: <u>30%</u> | | |
| D. | % Drought tolerant and low maintenance species required | <u>3</u> | <u>1</u> |
| | Trees provided: <u>5</u> | | |
| | Multiplier: <u>50%</u> | | |

PLANTING LEGEND

- EXISTING TREE
- PROPOSED TREE
- EXISTING
- PROPOSED PALM
- PROPOSED SHRUBS-ACCENTS
- PROPOSED GROUNDCOVER
- PROPOSED LAWN





- STAKING NOTES:
1. SAW CUT ALL WOOD STAKING MATERIALS LEAVE ENDS NEAT AND TRIM.
 2. PAINT ALL WOOD STAKING MATERIALS HUNTER GREEN.

9 STAKING DETAIL & NOTES

SCALE: NOT TO SCALE

PREPARATION:
STORE ALL MATERIAL IN DRY, CLEAN AREA, COVER TO PROTECT FROM RAIN AND MINIMIZE DUST. COORDINATE RUN-OFF CONTROL WITH GENERAL CONTRACTOR.
TEST EXISTING SOIL TO ENSURE IT IS FREE OF EXCESSIVE CLAY OR SALT AND ANY CHEMICALS/PETROCHEMICALS WHICH MAY HARM PLANT HEALTH.

EXISTING MATERIAL:
IF INCORPORATING EXISTING SITE SOIL REMOVE ALL ROOTS, AND ROCK LARGER THAN 2" IN SIZE. REMOVE ALL PLASTIC, METAL AND MANMADE DETRITUS.

MIX:
50% EXISTING SOIL
10% COCO PEAT
10% COMPOST
20% CLEAN SAND
10% PERLITE

BLEND QUANTITIES NEEDED BY HAND OR MACHINE.

INSTALLATION:
REFER TO APPROPRIATE DETAILS FOR AMENDMENTS, COMPACTION DEPTHS ETC.

GENERAL: REFER TO LANDSCAPE NOTES FOR ADDITIONAL INFORMATION

10 PLANTING SOIL- TYPICAL

MULCH A:
PINE STRAW, FOR USE IN GENERAL PLANTING AREAS AND ON SLOPES GREATER THAN 10%

MULCH B:
OPTION, MELALEUCA MULCH, FOR USE IN GENERAL PLANTING AREAS AND ON SLOPES GREATER THAN 10%

MULCH C:
IF SPECIFIED, MINI PINE BARK NUGGETS, FOR USE IN SPECIALTY AREAS

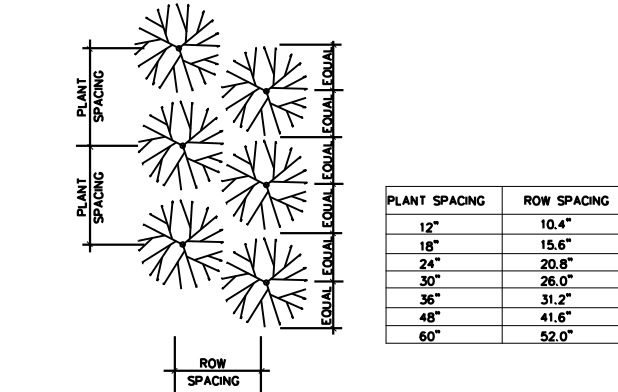
INSTALLATION:
REFER TO APPROPRIATE DETAILS FOR EXTENTS AND DEPTHS.

GENERAL: REFER TO LANDSCAPE NOTES FOR ADDITIONAL INFORMATION, CONFIRM TYPE TO BE USED WITH LANDSCAPE ARCHITECT PRIOR TO INSTALLATION.

11 MULCH- TYPICAL

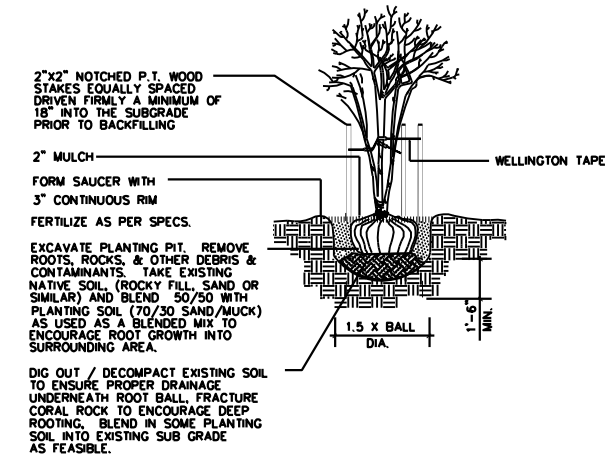
MIX:
5050- MUCK AND FINE SAND
SUPPLIER: ATLAS PEAT AND SOIL 561.734.7300

12 PLANTING SOIL- LAWN TOP DRESSING



6 PLANT SPACING

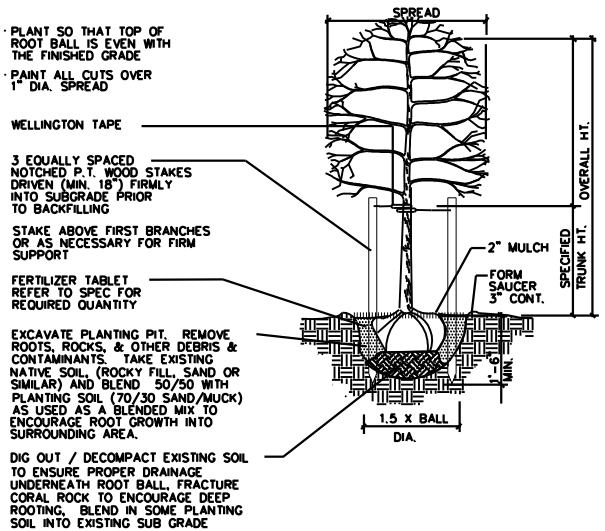
SCALE: NOT TO SCALE



7 MULTI TRUNK TREE- PLANTING & STAKING

SCALE: NOT TO SCALE

| CALIPER | TIES | STRANDS | STAKES |
|-------------|------|---------|-----------|
| 1" - 1 1/2" | 2 | 1 # 12 | 2 - 2 x 2 |
| 1 1/2" - 2" | 3 | 1 # 12 | 3 - 2 x 2 |
| 2" - 3" | 3 | 2 # 12 | 2 - 2 x 2 |

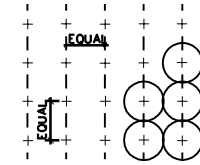


NOTE:
USE FOR 3" OR LESS SINGLE STEM TREES & PALMS

8 CANOPY AND PALM TREE- PLANTING & VERTICAL STAKING

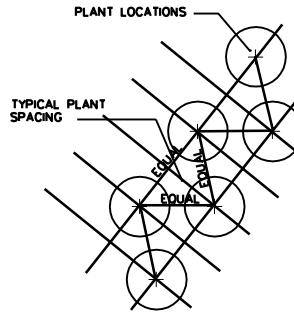
SCALE: NOT TO SCALE

NOTE:
IN MOST CASES TRIANGULAR SPACING IS PREFERRED. USE SQUARE SPACING ONLY IN SMALL RECTILINEAR AREAS.



TYPICAL PLANT SPACING

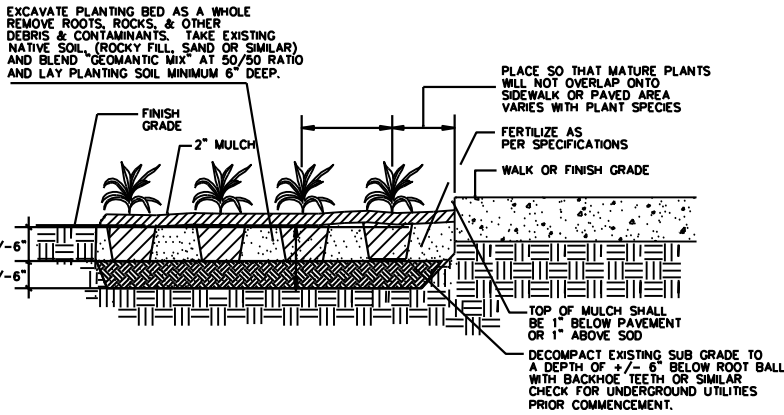
SQUARE SPACING PLAN



TRIANGULAR SPACING PLAN

5 CANOPY TREE- PLANTING & TRIPLE BRACE STAKING

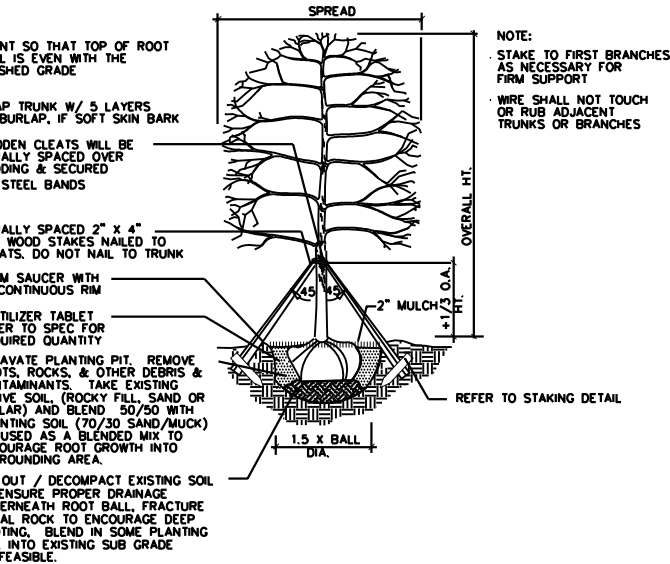
SCALE: NOT TO SCALE



4 SHRUB- HEDGE AND MASS PLANTING

SCALE: NOT TO SCALE

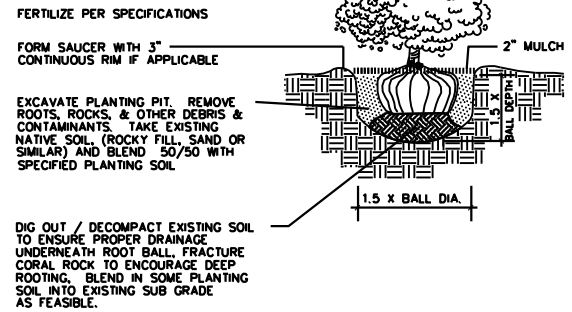
| CALIPER | CLEATS | STRAPS | BRACES | NAILS |
|-----------|-------------|--------|-----------|---------|
| 3" - 8" | 2 x 4 x 8" | 1 # 12 | 3 - 2 x 4 | 2 - 16d |
| 8" - 10" | 2 x 4 x 12" | 1 # 12 | 3 - 2 x 4 | 3 - 16d |
| 10" - 16" | 2 x 4 x 12" | 2 # 12 | 4 - 2 x 4 | 3 - 16d |



NOTE:
USE FOR 3" TO 12" SINGLE TRUNK TREES

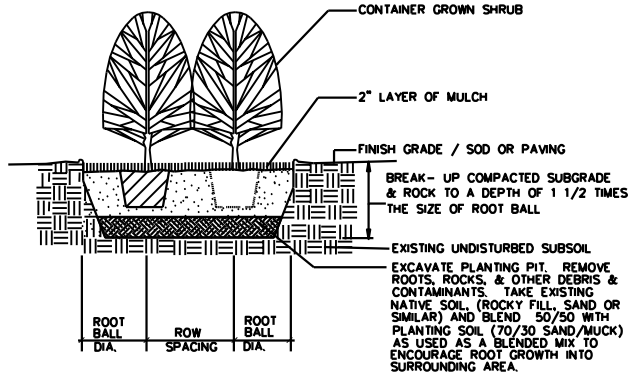
5 CANOPY TREE- PLANTING & TRIPLE BRACE STAKING

SCALE: NOT TO SCALE



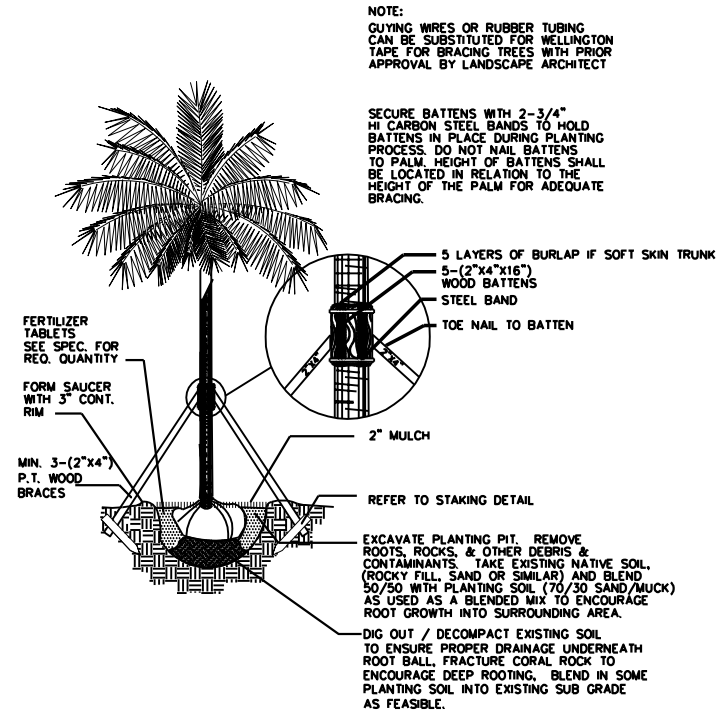
1 SHRUB PLANTING

SCALE: NOT TO SCALE



2 SHRUB- HEDGE AND MASS PLANTING

SCALE: NOT TO SCALE



3 PALM- PLANTING & STAKING

SCALE: NOT TO SCALE

LIGHTING NOTES

1. PRIMARY CONTROLLERS AND GENERAL FIXTURE LOCATIONS SHOWN ONLY. CONTRACTOR TO SUBMIT SHOP DRAWINGS FOR COMPLETE SYSTEM DESIGN FOR APPROVAL BY LANDSCAPE ARCHITECT PRIOR TO INSTALLATION.
2. CONTRACTOR TO PROVIDE CODE COMPLIANT SYSTEM DESIGN INCLUDING FOOT CANDLE COVERAGE AND SEA TURTLE REQUIREMENTS FOR ENTIRE SITE.
3. COORDINATE LANDSCAPE LIGHTING WITH INTERIOR AND EXTERIOR ARCHITECTURAL LIGHTING. ENSURE COMPATIBILITY WITH ARCHITECTURAL LIGHTING SYSTEM CONTROLLERS.
4. PROVIDE NEMA RATED EQUIPMENT AND ENCLOSURES FOR SYSTEM CONTROLLERS EXPOSED TO THE ELEMENTS. SUBMIT PROPOSED MOUNTING SYSTEM, ENCLOSURES AND LOCATIONS AS PART OF THE SUBMISSION PROCESS.

AMP® ONE ControlPro™ 200 LED Down Light
AMP® ControlPro™ 200 LED Down Light


Product Description

The AMP® ControlPro™ 200 LED Down Light is a low voltage, professional grade landscape light, designed specifically for downlighting. Featuring integrated LED's with interchangeable optics, as well as an extra-long, adjustable glare guard, the AMP® ControlPro™ 200 LED Down Light is available in both a dimmable and non-dimmable version and can be easily adjusted to fit the needs of the most discerning designers.

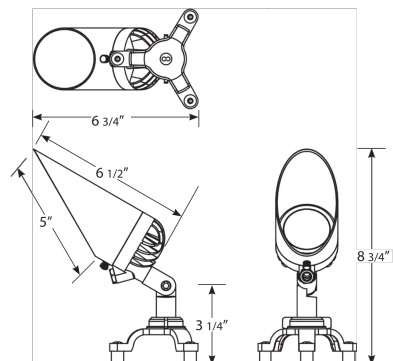
Designed with a solid brass, offset tripod tree mount with nylon spacers, the down light can be mounted to uneven surfaces and will not cause damage to trees typically caused by mold and insects.

25' of UL approved lead wire eliminates visible splices up the tree, and the downward facing wire port is an added safeguard against water ingress.

Built to last a lifetime, the AMP® ONE ControlPro™ 200 LED Down Light is backed by the AMP® lifetime warranty.



Product Dimensions



Specifications subject to change without notice.

©Copyright 2017, AMP® Lighting, Lutz FL 33549 - All rights reserved. Patents pending.

Features & Benefits

- ▶ **Solid Cast Brass Construction**
 - Resistant to corrosion
 - Will not break or bend
 - Weathers to a beautiful patina
- ▶ **Adjustable Extra Long Glare Guard**
 - Prevents direct glare, light trespass and light pollution
- ▶ **High Performance LED Chips and Engine**
 - Warm White (2700K) color temperature
 - USA-made high performance Cree LED's and USA-made AMP® -engineered boards and drivers
 - High-lumen output
- ▶ **Interchangeable Optics for Adjustable Beam Spread**
 - Ships with 60° (installed).
- ▶ **Tripod Tree Mount with Nylon Spacers and Stainless Steel Screws**
 - Offset mounting to minimize damage to tree
 - Tripod can be removed to allow for surface mounting

5 MOONLIGHT

YLIGHTING
Call Us 866 428 9289

Landscape Lighting LED Horizontal Step Light
By WAC Lighting

Product Options

Finish: Black on Aluminum, Bronze on Aluminum, Bronze on Brass, Cast Stainless Steel, White on Aluminum
Light Option: Amber, Warm White, White

Details

- Designed in 2016
- Shade Material: Glass
- Protected against high-pressure water jets
- Rated Hours: 60,000 hours
- 10%-100% dimming
- 50° beam spread
- Features frosted glass diffuser
- Solid diecast brass, corrosion resistant aluminum alloy or cast stainless steel construction
- Dimmable when used with Electronic low voltage (ELV) dimmer dimmers(not included)
- Title 24 compliant
- UL Listed Wet
- Warranty: 10 Years Functional / 5 Years Functional for Black Finish
- Made In China

Dimensions

Fixture: Length 5", Height 3", Depth 1.93"


Lighting

- 2 Watt (68 Lumens) 12 Volt Integrated LED: CRI: 90 Lifespan: 60000 hours

Additional Details

Product URL:
<https://www.ylighting.com/led-12v-ledme-step-light-by-wac-lighting-WACP138098.html>

Rating: UL Listed Wet



Notes:

3 STEP LIGHT

YLIGHTING
Call Us 866 428 9289

Square Curve Outdoor LED Bollard
By SONNEMAN Lighting

Product Options

Finish: Textured Bronze, Textured Gray
Size: 16-inch, 22-inch, 28-inch

Details

- Designed by Robert Sonneman in 2018
- Material: Aluminum
- 12VAC power supply required (sold separately)
- Suitable for wet locations
- UL/ETL Listed
- Warranty: Limited 1 Year
- Made In China

Dimensions

16-inch Option Base: Width 8", Depth 3"
16-inch Option Fixture: Width 7", Height 16", Depth 2", Weight 6Lbs
16-inch Option Opening: Width 6", Height 4"
22-inch Option Base: Width 8", Depth 3"
22-inch Option Fixture: Width 7", Height 22", Depth 2", Weight 8Lbs
22-inch Option Opening: Width 6", Height 4"
28-inch Option Base: Width 8", Depth 3"
28-inch Option Fixture: Width 7", Height 28", Depth 2", Weight 9Lbs
28-inch Option Opening: Width 6", Height 4"

Lighting

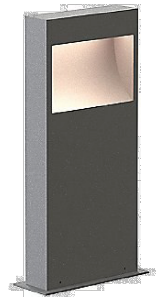
- 12 Watt (990 Lumens) 12 Volt Integrated LED: CRI: 90 Color Temp: 3000K

Additional Details

Product URL:
<https://www.ylighting.com/square-curve-outdoor-led-bollard-by-sonneman-lighting-SNNP202251.html>

Rating: UL/ETL Listed

Product ID: SNNP202251



Notes:

4 BOLLARD LIGHT

YLIGHTING
Call Us 866 428 9289

Landscape Lighting LED Spot & Flood Light
By WAC Lighting

Product Options

Material: Bronze on Aluminum, Bronze on Brass
Light Temperatures: 2700, 3000

Details

- Designed in 2016
- Finish: Bronze
- Integral dimmer and adjustable beam angle
- Rated life: 70,000 hours
- Protected against high-pressure water jets
- Includes ground stake and direct wire nuts
- Brass option: Enhanced protection from coastal or marine environments
- Warranty: Lifetime on bronze on brass finish
- Warranty: 2 years on bronze on aluminum finish
- UL Listed Wet
- Warranty: 10 years functional
- Made In China

Dimensions

Fixture: Length 6.62", Width 2.87", Height 5.87"


Lighting

- 2700K Option: 16 Watt (1045 Lumens) 12 Volt Integrated LED: CRI: 85 Color Temp: 2700K
- 3000K Option: 16 Watt (1045 Lumens) 12 Volt Integrated LED: CRI: 85 Color Temp: 3000K

Additional Details

Product URL:
<https://www.ylighting.com/led-12v-accent-landscape-light-by-wac-lighting-WACP124198.html>

Rating: UL Listed Wet



Notes:

1 LIGHT TYPE 1

YLIGHTING
Call Us 866 428 9289

LED Garden and Pathway Bollard - B77265/B77266
By BEGA

Product Options

Model: In-Ground, Surface Mount
Color: Graphite, Bronze

Details

- CSA Certified Wet
- Made In Germany

Additional Details

Product URL:
<https://www.ylighting.com/led-garden-and-pathway-bollard---b77265%2Fb77266-by-bega-BEGY16624.html>

Rating: CSA Certified Wet

Product ID: BEGY16624



Notes:

2 PATHWAY LIGHT

MCG
ARCHITECTURE + PLANNING

7580 NE 4th Court
Studio 100
Miami, FL 33138

PROJECT NUMBER
1819

MAK
work

Designer/
Landscape Architect

PROJECT:
4354 ALTON ROAD RESIDENCES

4354 ALTON RD.
MIAMI BEACH,
FLORIDA, 33139

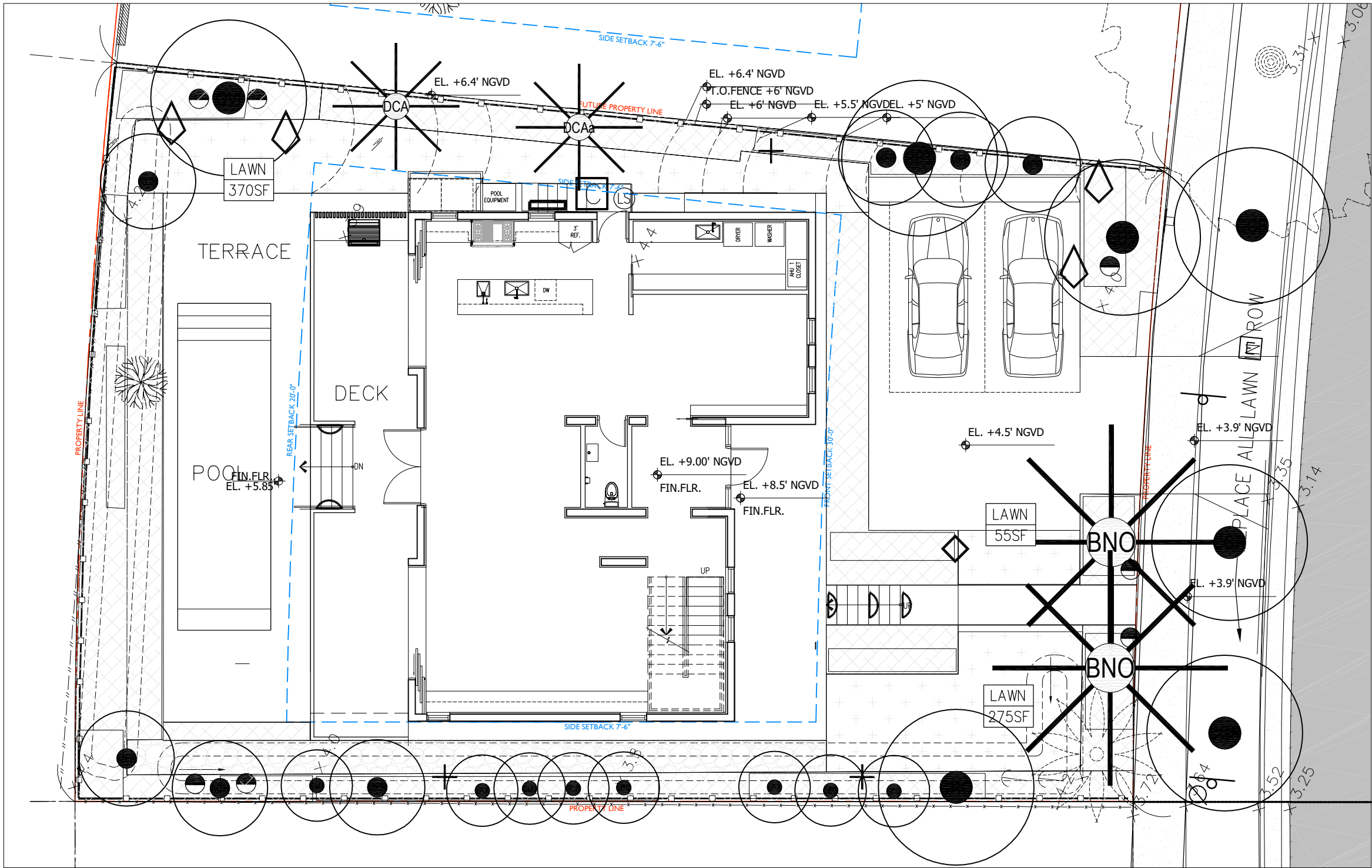
DRAWING:

LIGHTING NOTES & SPECIFICATIONS








MARSH C. KRIPLEN FLORIDA LIC# LA6667007
ALL DRAWINGS AND WRITTEN MATERIAL APPEARING HEREIN CONSTITUTE THE ORIGINAL AND UNPUBLISHED WORK OF MCG ARCHITECTURE AND MAY NOT BE DUPLICATED, USED OR DISCLOSED WITHOUT THE EXPRESS WRITTEN CONSENT OF MCG ARCHITECTURE & PLANNING, INC. (c) 2018

SCALE:
CHECK: MCK
DATE: 07/09/2018
SHEET NUMBER

L800



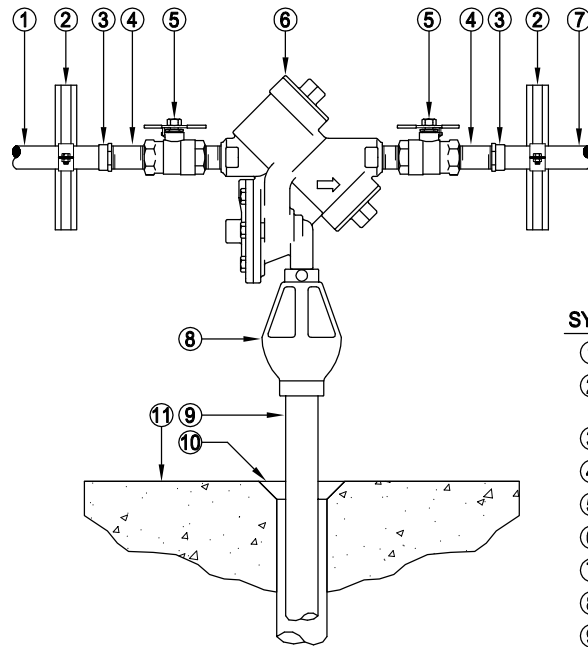
LIGHTING LEGEND

-  LIGHTING CONTROLLER AND LIGHT SENSOR
-  TRANSFORMER
-  LIGHT TYPE 1
-  MOONLIGHT
-  PATH LIGHT
-  BOLLARD
-  STEP LIGHT



MARSH C. KRIPLEN FLORIDA LIC# LA6667007
ALL DRAWINGS AND WRITTEN MATERIAL APPEARING
HEREIN CONSTITUTE THE ORIGINAL AND UNPUBLISHED
WORK OF MCG ARCHITECTURE AND MAY NOT BE
DUPLICATED, USED OR DISCLOSED WITHOUT THE
EXPRESS WRITTEN CONSENT OF MCG ARCHITECTURE &
PLANNING, INC. (c) 2018

SCALE:
CHECK: MCK
DATE: 07/09/2018
SHEET NUMBER



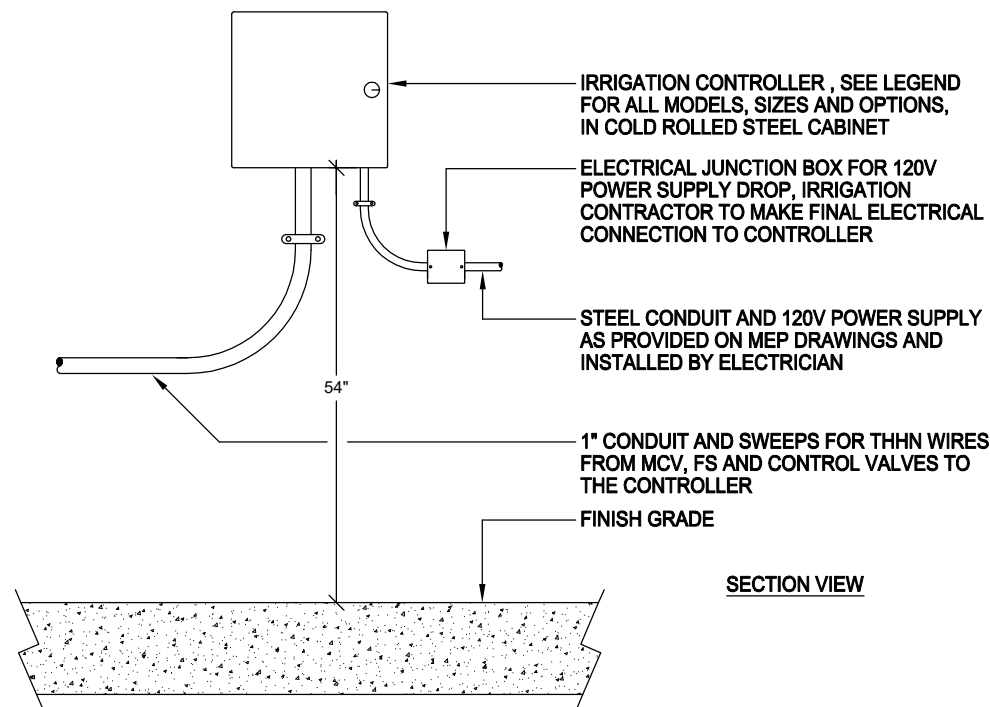
SYM. DETAIL COMPONENT LEGEND

- ① 1 1/4" COPPER STUB OUT FROM BUILDING WATER (BY PLUMBER)
- ② UNI-STRUT SUPPORT BRACKET, 24" MINIMUM LENGTH, WITH CUSH-A-CLAMP PIPE HANGERS
- ③ 1 1/4" X 1" COPPER SWEAT X FIPT REDUCING FEMALE ADAPTER
- ④ 1" X 3" BRASS THREADED NIPPLE
- ⑤ UNION STYLE BALL VALVE, PART OF BACKFLOW DEVICE
- ⑥ REDUCED PRESSURE BACKFLOW PREVENTION DEVICE
- ⑦ 1" COPPER PIPE TO ADJACENT PRV, MCV AND FS ASSEMBLY
- ⑧ AIR GAP REQUIRED FOR BACKFLOW PREVENTION DEVICE
- ⑨ 1" DRAIN LINE, SCH. 40 PVC TO FLOOR DRAIN
- ⑩ DRAIN IN FLOOR OF ROOM (BY PLUMBER)
- ⑪ FLOOR OF ROOM (BY OTHERS)

SECTION VIEW

3 REDUCED PRESSURE BACKFLOW DEVICE

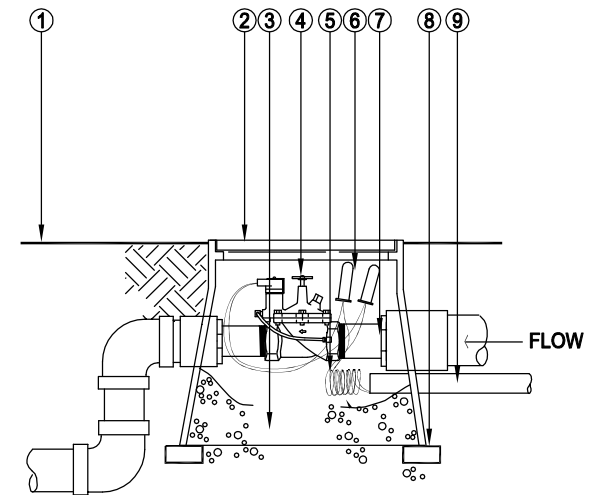
NTS



SECTION VIEW

4 CONTROLLER INSTALLATION

NTS



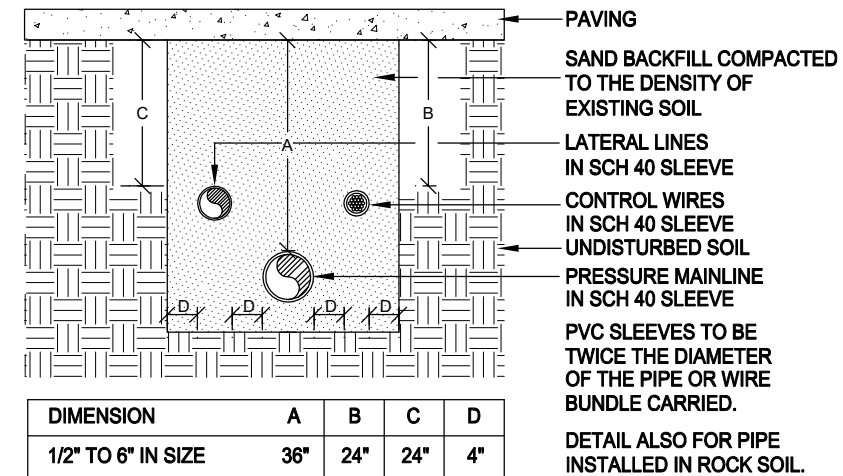
SYM. DETAIL COMPONENT LEGEND

- ① GROUND LEVEL
- ② VALVE BOX COVER LABELED IRRIGATION CONTROL VALVE GREEN
- ③ GRAVEL 30 IN. MINIMUM DEPTH
- ④ REMOTE CONTROL VALVE RAINBIRD PGA
- ⑤ 12 IN. WIRE COIL EACH WIRE
- ⑥ WATER PROOF CONNECTION
- ⑦ SCH 80 NIPPLE
- ⑧ BRICK (1 OF 4)
- ⑨ ELECTRIC CONDUIT UL APPROVED

SECTION VIEW

1 ELECTRIC REMOTE CONTROL VALVE WITH VALVE BOX

NTS

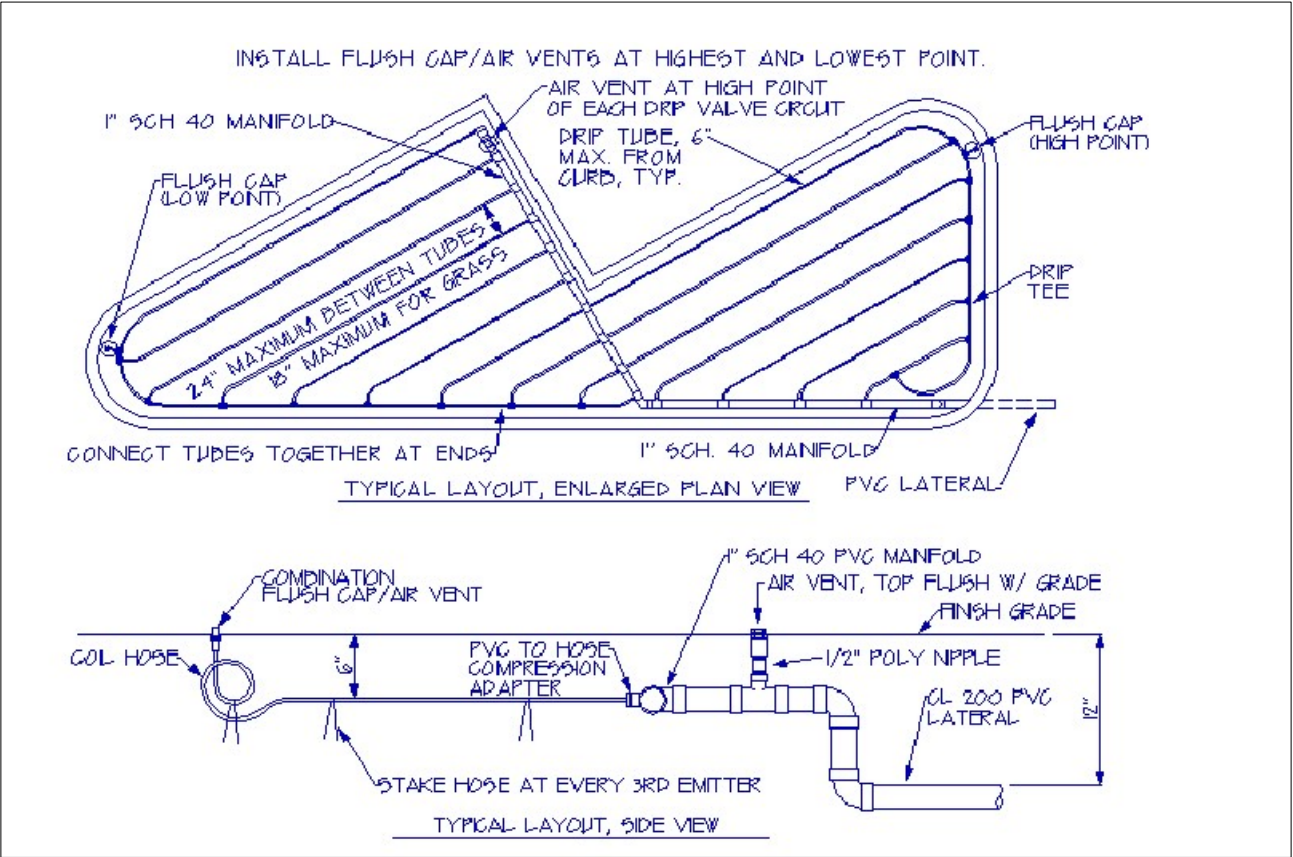


NOTE:
SLEEVES TO EXTEND AT LEAST 12" PAST THE EDGE OF THE PAVING.

SECTION VIEW

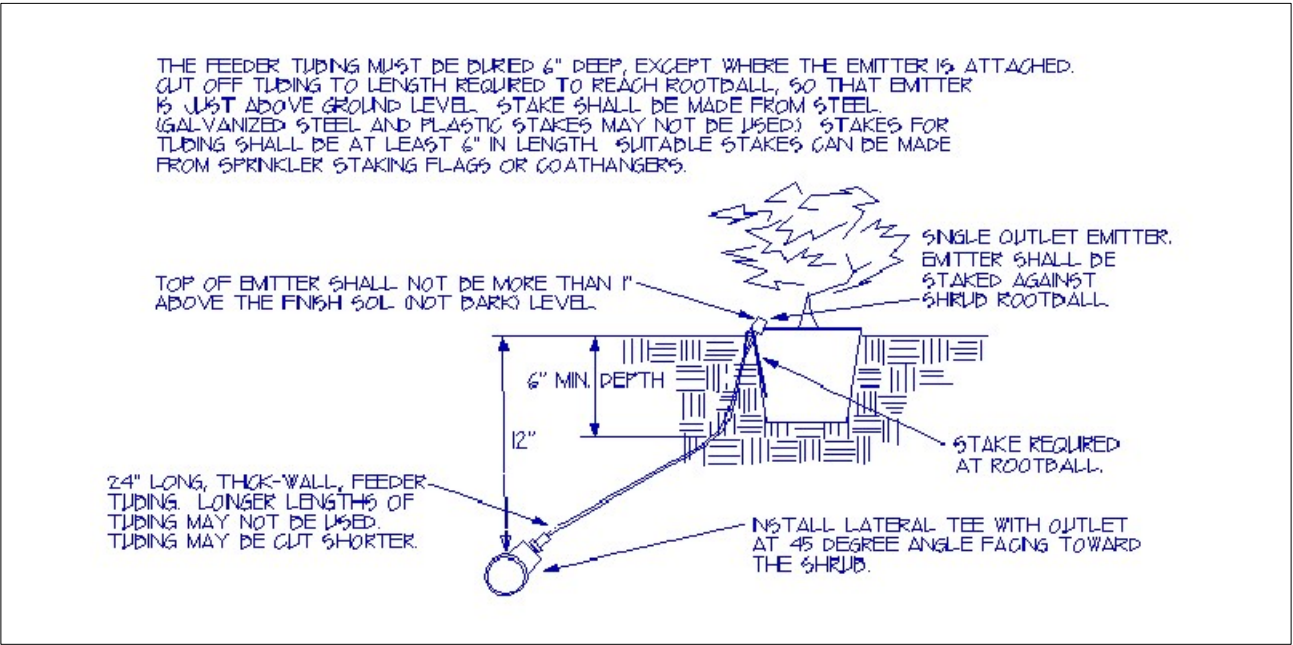
2 SLEEVE INSTALLATION

NTS



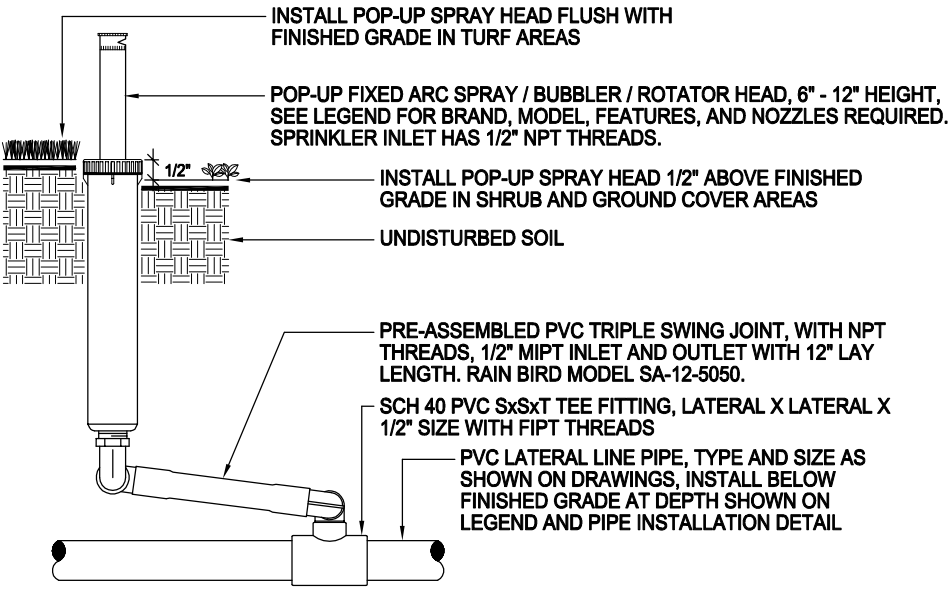
7 TYPICAL DRIP IRRIGATION- PLAN & SECTION

NTS



8 SHRUB EMITTER

NTS

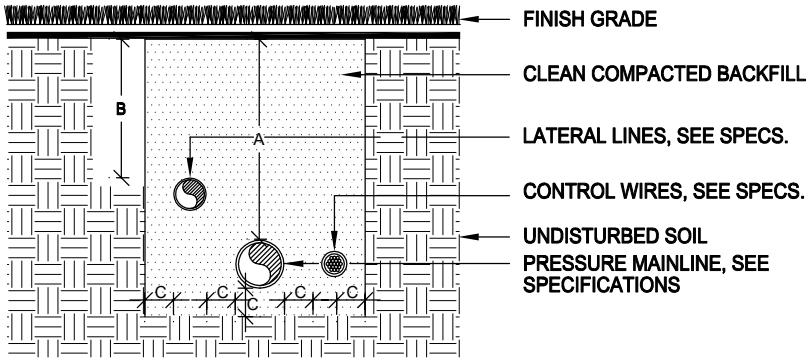


SECTION VIEW

NOTE:
INSTALL SPRAY HEADS 4" FROM PAVING EDGE IN TURF AREAS.
INSTALL SPRAY HEADS 6" FROM PAVING EDGE IN SHRUB AND GROUND COVER AREAS.
INSTALL SPRAY HEADS 12" FROM THE FACE OF BUILDING WALLS OR WINDOWS.
INSTALL SPRAY HEADS PLUMB. ADJUST NOZZLE SPRAY TO COVER THE LANDSCAPE AREA WITHOUT OVERSPRAY ONTO PAVING, FENCES, WALLS OR BUILDINGS.
SPRINKLER, SWING JOINT, AND PVC FITTINGS SHALL ALL HAVE "NPT" STYLE THREADS.

5 POP - UP SPRINKLER HEAD

NTS



| DIMENSION | A | B | C |
|--------------------|-----|-----|----|
| 1/2" TO 2" IN SIZE | 18" | 12" | 4" |

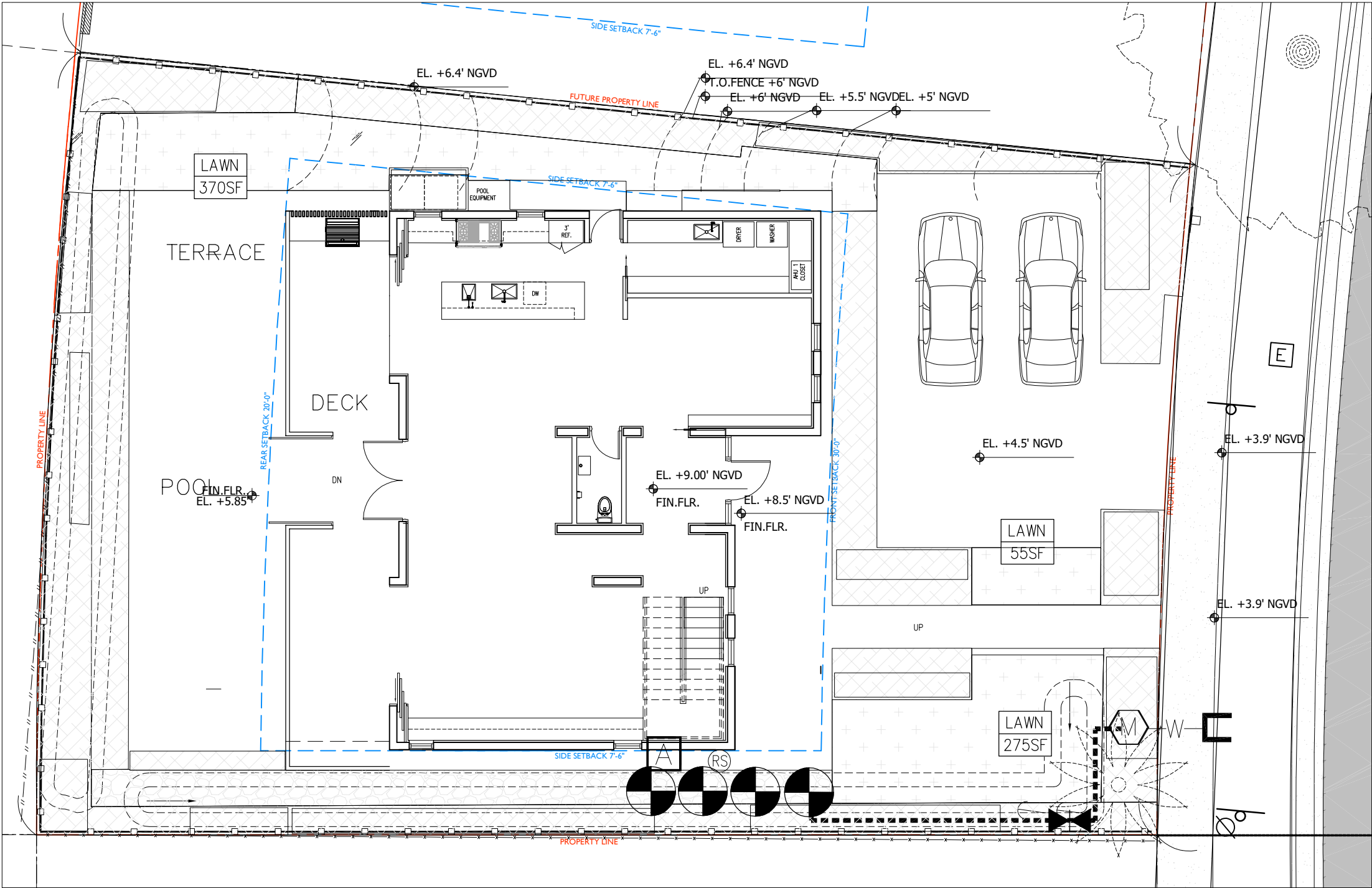
SECTION VIEW

6 PIPE INSTALLATION

NTS

IRRIGATION NOTES

1. INFORMATION ON DRAWINGS FOR POINT OF CONNECTION, CONTROLLER, VALVE AND MAIN LINE ONLY. CONTRACTOR TO PROVIDE FINAL DRAWINGS AND SPECIFICATIONS FOR PERMIT.



1 IRRIGATION PLAN

IRRIGATION LEGEND

| | | |
|-----------|------|-----------------------------------------|
| | W-M | WATER TAP AND METER. |
| | | REDUCED PRESSURE BACKFLOW PREVENTER. |
| | RS-A | IRRIGATION CONTROLLER WITH RAIN SENSOR. |
| | | IRRIGATION CONTROL VALVE. |
| | | IRRIGATION ISOLATION VALVE. |
| SIZE | | PVC MAIN LINE PIPE. |
| SIZE | | PVC LATERAL LINE PIPE. |
| SIZE SLV. | | PVC SLEEVE PIPE. |
| | | 1" BRASS QUICK COUPLER VALVE. |
| | | DRIP IRRIGATION ZONE |