



4904 Eisenhower Boulevard, Suite 150
Tampa, FL 33634

813.888.5800
www.walkerconsultants.com

November 5, 2018

(Sent via email to: RocioAlba@miamibeachfl.gov)

Ms. Rocio Alba
Administrative Service Manager,
Parking Department
City of Miami Beach
1755 Meridian Avenue, Suite 100
Miami Beach, FL 33139

Re: Police and Parking Department – Maximum Allowable Towing Rates Analysis
City of Miami Beach, Florida
Walker Project No. 15-2299.00

Dear Ms. Alba:

Walker Consultants is pleased to present this draft report detailing our findings regarding the maximum allowable towing rates at the City of Miami Beach. This report summarizes our findings and recommendations and is intended to assist with evaluating rate changes within the City of Miami Beach Police and Parking Department.

We appreciate the opportunity to be of service to you on this project. If you have any questions or comments, please do not hesitate to call.

Sincerely,

WALKER CONSULTANTS

A handwritten signature in blue ink, appearing to read "Jim Corbett".

Jim Corbett, CAPP
Consultant

A handwritten signature in blue ink, appearing to read "Emily R. Krueger".

Emily Krueger
Planner/ Analyst

INTRODUCTION

The City of Miami Beach has requested Walker Consultants to analyze their maximum allowable towing rates as well as acceptable forms of payment by the general public to the towing service providers for retrieval of their vehicle. The last towing rate increase in the City of Miami Beach occurred in 2012. The City is seeking a review of the existing rate structure and a comparative analysis with other communities in the region to arrive at a recommendation for maximum allowable towing rates. Walker has chosen nine comparable communities that experience an increase in visitors during peak season activity as well as host an active night life.

Within this analysis, maximum allowable towing rates include non-consensual and police-directed towing rates by vehicle class, drop fees, storage rates, additional fees that can include administrative fees, after-hours fees, or labor fees, and typically define acceptable forms of payment.

DEFINITION OF TERMS

Several terms or jargon are used in this report that have unique meanings when used in the parking industry. To help clarify these terms and enhance understanding by the reader, the following definitions are presented.

- **Non-Consensual or Non-Consent Tow** - The towing or removing of any motor vehicle from private property without the express consent of the vehicle owner.
- **GVW** – Gross Vehicle Weight
- **Class A Vehicle**- Gross vehicle weight up to 10,000 pounds, a sedan to a pickup truck
- **Class B Vehicle** – Gross vehicle weight between 10,000 and 19,500 pounds, box truck to a large walk-in van
- **Class C Vehicle**- Gross vehicle weight between 19,500 and 25,000 pounds, a beverage truck to a school bus
- **Class D Vehicle** – Gross vehicle weight over 25,000 pounds, a garbage truck to a city transit bus

CITY OF MIAMI BEACH MAXIMUM ALLOWABLE TOWING RATES

The City of Miami Beach’s maximum allowable towing rates reflect the rates last updated in 2012. Currently payment is accepted in the form of cash, money order, traveler’s check, or personal check. Typical fees commonly found in other municipal rate structures include drop fee, labor rate, administrative fee, and maximum after-hour gate fee. Our research concluded these fees are consistent with other Florida agencies included in this study. The non-consensual tow rate for Class A Vehicles higher than the average rate from the communities studied in this analysis, however Class B, C, and D vehicles are reported at much lower rates than comparable communities. The City has chosen to waive drop fees within City limits, which is unique when compared to the other agencies studied in this analysis.

When researching, Walker found that many municipalities created ordinances that defer to the county’s established towing ordinances. Where a city and county are listed in tandem, the city has specified that they have adopted the towing rates set forth by the county. The comparative cities and counties specify in their Code of Ordinances that rates can be altered, revised, increased or decreased as established by their respective commissions. The typical rate increase discovered in this analysis is either the annual percentage increase of the Consumer Price Index or 3%, whichever is lower. The following exhibit shows the maximum allowable towing rates for the City of Miami Beach.

Exhibit 1: City of Miami Beach Maximum Allowable Towing Rates

City	Non-Consent Tow Rate		
MIAMI BEACH	Class A Vehicles	Nonconsensual tow (flat rate)	\$140.00
	Class B Vehicles	Nonconsensual tow (flat rate)	\$145.00
	Class C Vehicles	Nonconsensual tow (flat rate)	\$175.00
	Class D Vehicles	Nonconsensual tow (flat rate)	\$200.00
	Drop Fee	Drop Fees have been Waived in City of Miami Beach	-
	Labor Rate	Labor rate fee, if extraordinary effort, such as multiple tow trucks, is required.	\$30.00
	Storage Fee		
	Daily Outdoor Storage/ per day	Storage fees will be imposed after the vehicle has been in the control of the towing operator more than 6 hours. Storage rates accrue at a rate per 24 hour period or fraction thereof.	\$30.00
	Daily Indoor Storage/ per day		\$35.00
	Administrative Fee		
	Administrative Fee	An administrative fee will be imposed on all vehicles	\$35.00
	After-Hour Gate Fee		
	Maximum after-hour gate fee	After-hour gate fees will not be applied between the hours of 8:00 am and 5:00pm Monday through Friday	\$30.00
	Acceptable Forms of Payment		
	Cash, Money Order, Traveler's Check or Personal Check with ID		
(Code 1964, § 44-60)			

Source: City of Miami Beach and Walker Consultants 2018

COMPARATIVE CITIES AND COUNTIES

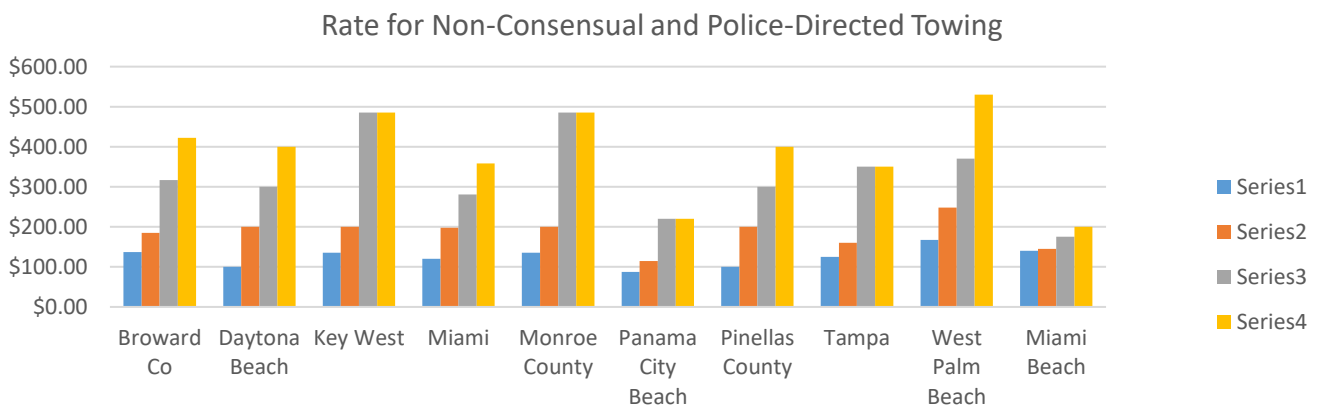
A key part of this study involved a comparison between the City of Miami Beach’s towing rates to those of comparable cities and counties throughout the State of Florida. The purpose of this benchmarking exercise is to demonstrate how similar cities have structured their rates for non-consensual towing operations. The following cities and counties have been chosen to analyze:

1. Broward County
2. Daytona Beach
3. Key West
4. Miami – Miami-Dade County
5. Monroe County
6. Panama City Beach
7. Pinellas County
8. Tampa – Hillsborough County
9. West Palm Beach – Palm Beach County

NON-CONSENSUAL TOWING RATES

The following exhibit shows the established flat rate fee for non-consensual tows by vehicle class.

Exhibit 2: Comparison of Non-Consensual and Police-Directed Towing Rates



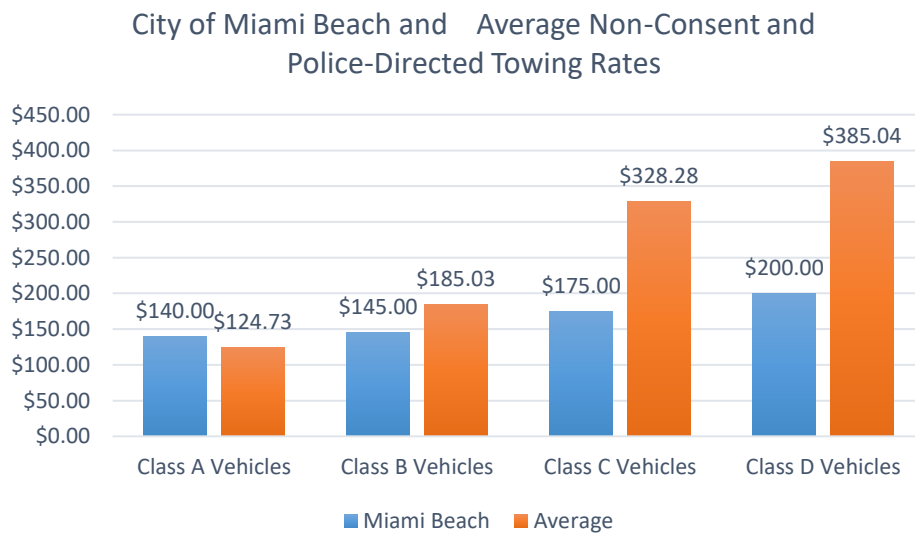
Source: Walker Consultants 2018

When summarizing the data from the previous exhibit the average flat rate fee for non-consensual and police-directed tows by class are as follows:

- Class A Vehicle: \$124.73
- Class B Vehicle: \$185.03
- Class C Vehicle: \$328.28
- Class D Vehicle: \$385.04

The exhibit below shows the comparison between the City of Miami Beach and the average of the comparable cities' non-consensual and police-directed towing rates.

Exhibit 3: Comparison of Miami Beach and the Average Non-Consensual and Police-Directed Towing Rates

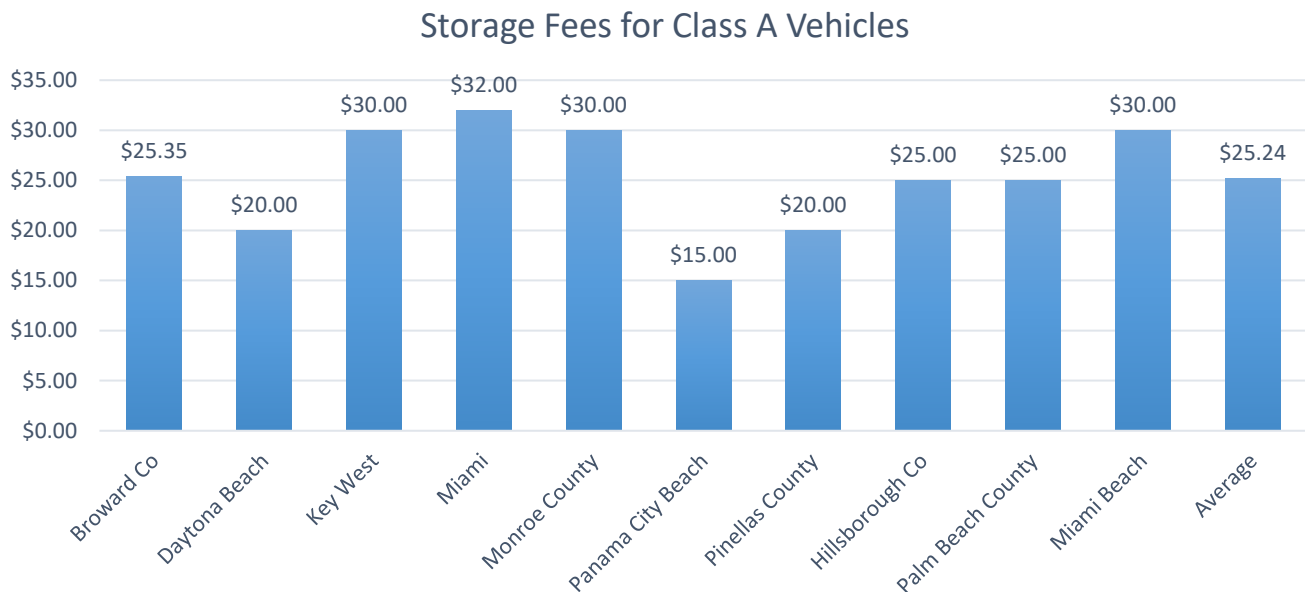


Source: Walker Consultants 2018

STORAGE FEES

Storage fees vary by city and county. Some municipalities and counties charge a storage rate by class, while others charge a by storage location. Storage locations vary by indoor and outdoor facilities. Additionally, some cities and counties charge fees if the vehicle is over 20 feet long. In the following exhibit, the outdoor storage rate for Class A Vehicles has been shown:

Exhibit 4: Storage Fee Comparison for Class A Vehicles



Source: Walker Consultants 2018

ADMINISTRATIVE FEES

Administrative fees are typically charged after a vehicle is stored for 24 hours and the towing service has complied with requirements of F.S. § 713.78 - Liens for recovering, towing, or storing vehicles and vessels, including execution and mailing of the lien notice. The average Administrative Fee is \$35.00.

ACCEPTABLE FORMS OF PAYMENT

All comparable cities and counties accept cash and money orders however the following cities and counties accept credit card payment as an additional option: Broward County, the City of Key West, the City of Miami, Monroe County, Pinellas County, Palm Beach County, and Miami-Dade County. While these cities and counties have specified acceptance of bank credit cards, no additional information is available at this time discussing policies guiding the acceptance of credit cards.

ANNUAL RATE INCREASE

The cities and counties studied in this report all state that maximum rates may be altered, revised, increased or decreased by commission approval. Broward County specifically stated maximum towing rates are to be reviewed annually and increased by the annual percentage increase in the Consumer Price Index (CPI) or 3%, whichever is less. In fiscal year 2018 the annual CPI increase was 2.3% and the rates were increased by that amount. Again, in fiscal year 2019 the rates increased another 2.3%. While it's important to recognize Broward County mandates these increases in their ordinances, other cities and counties have the authority to approve a rate increase.

SUMMARY AND RECOMMENDATION

Walker's research reveals the non-consensual and police-directed Class-A towing rates for the City of Miami Beach remains one of the highest within any of the comparable cities and counties listed in this analysis. While Broward County has recently increased their Class-A towing rates to match a 2.3% CPI increase over the past two fiscal years, their maximum allowable towing rate remains at \$137.28 per tow. Other cities and counties within this analysis have not clearly stated they have enacted a recent rate increase. The following summary demonstrates the Class-A towing rates and their acceptable forms of payment for each of the cities and counties listed in the analysis. Given this available information, Walker does not recommend a towing rate increase at this time.

City or County Jurisdiction	Class-A Towing Rate
Palm Beach County	\$167.00
Miami Beach	\$140.00
Broward County	\$137.28
Key West	\$135.00
Monroe County	\$135.00
Tampa	\$125.00
Miami	\$120.50
Daytona Beach	\$100.00
Pinellas County	\$100.00
Panama City Beach	\$87.50

City or County Jurisdiction	Cash	Check	Credit Card	Debit Card
Palm Beach County	X	X	X	X
Miami Beach	X	X		
Broward County	X	X	X	X
Key West	X	X	X	X
Monroe County	X	X	X	X
Tampa	X	X		X
Miami	X		X	
Daytona Beach	X			
Pinellas County	X		X	X
Panama City Beach	X	X		

The exhibits over the following pages reflect Walker's research efforts to summarize the comparable city and county data.

BROWARD COUNTY

Exhibit 5: Broward County Maximum Allowable Towing Rates

County	Non-Consent Tow Rate		
BROWARD	Class A Vehicles	<i>Police Directed Tow: First 15 min. on scene</i>	\$137.28
		<i>Police Directed Tow: Labor extending beyond the initial 15 min on scene</i>	\$58.08/ ½ hour
	Class B Vehicles	<i>Police Directed Tow (flat rate)</i>	\$184.79
		<i>If Flatbed is Used</i>	\$205.92
	Class C Vehicles	<i>Police Directed Tow (flat rate)</i>	\$316.79
		<i>If Flatbed is Used</i>	\$340.02
	Class D Vehicles	<i>Police Directed Tow (flat rate)</i>	\$422.40
		<i>If Flatbed is Used</i>	\$340.02
	Drop Fee	<i>Rate if released on scene</i>	50.00%
	Storage Fee		
	<i>The following rates shall be set for the storage of vehicles. However, pursuant to Section 713.78 (2), Florida Statutes, no storage fee shall be charged if the vehicle is stored for less than six (6) hours.</i>		
	Class A Vehicles	<i>Indoor</i>	\$31.68
		<i>Outdoor</i>	\$25.35
	Class B Vehicles		\$45.41
	Class C Vehicles		\$52.80
	Class D Vehicles		\$52.80
	Administrative Fee		
	Administrative Fee	<i>An administrative fee will be imposed on all vehicles but may not be charged if the vehicle owner is identified within 24 hours of the vehicle arriving at the storage facility.</i>	\$31.68
	<i>The person retrieving the vehicle may pay a \$5.18 voluntary fee to expedite vehicle ownership verification.</i>		
	<i>Research fees may be charged ONLY when the tow company providing the service must actually perform research to determine ownership of a vehicle to notify the vehicle owner, lien-holders, and insurance companies.</i>		
	Labor Fee		
	Class A Vehicles	<i>per hour (starting when the tow operator arrives at scene of the vehicle and ending when the tow operator leaves the scene)</i>	-
	Class B Vehicles		\$184.79/ hr
	Class C Vehicles		\$316.79/ hr
Class D Vehicles	\$105.59/ ¼hr		
Acceptable Forms of Payment			
Cash, Money Order, Traveler's Check			
Bank Debit/Credit Card including but not limited to MasterCard or Visa			
<i>If payment is made by CREDIT CARD, a credit card fee in the amount of three percent (3%) may be charged to the vehicle owner.</i>			
<i>Towing industry fees are to be reviewed annually and increased by the annual percentage increase in the Consumer Price Index or 3%, whichever is less. The 2017 to 2018 annual CPI increase was 2.3% as determined by the Environmental and Consumer Protection Division after review of the Bureau of Labor Statistics, Southeastern Regional Office CPI data. Accordingly, towing industry fees for 2019, increased by 2.3%, are reflected below and are effective October 1, 2018.</i>			
<i>(Per § 40.37.c.4 and § 27.150(f)(6) of the Broward County Administrative Code)</i>			

CITY OF DAYTONA BEACH

Exhibit 6: City of Daytona Beach Maximum Allowable Towing Rates

City	Non-Consent Tow Rate		
DAYTONA BEACH	Class A Vehicles	Towing Rate	\$100.00
	Class B Vehicles	Towing Rate	\$200.00
	Class C Vehicles	Towing Rate	\$300.00
	Class D Vehicles	Towing Rate	\$400.00
	Drop Fee	Drop fee not to exceed \$25.00	\$25.00
	Storage Fee		
	Class A Vehicles	Maximum daily storage fee after 12 hours	\$20.00
	Class B Vehicles		\$30.00
	Class C Vehicles		\$60.00
	Class D Vehicles		\$60.00
	Administrative Fee		
	Administrative Fee	An administrative fee not to exceed \$35.00 may be charged after the first 48 hours so long as the wrecker has actually complied with the requirements of F.S. § 713.78, including execution and mailing of the lien notice.	\$25.00
	Additional Fees		
	Maximum after-hour gate fee	After-hour gate fees will not be applied between the hours of 8:00 am and 6:00pm Monday through Friday	\$25.00
(Code 1970, § 8-7)			

Source: City of Daytona Beach and Walker Consultants 2018

CITY OF KEY WEST

Exhibit 7: City of Key West Maximum Allowable Towing Rates

City	Non-Consent Tow Rate		
KEY WEST	Class A Vehicles	<i>Nonconsensual tow (flat rate)</i>	\$135.00
	Class B Vehicles	<i>Nonconsensual tow (flat rate)</i>	\$200.00
	Class C Vehicles	<i>Nonconsensual tow (flat rate)</i>	\$485.00
	Drop Fee	<i>Rate if released on scene</i>	50.00%
	Labor Rate	<i>Labor rate fee up to \$135/hour if extraordinary effort, such as multiple tow trucks, is required.</i>	\$135.00/hour
	Storage Fee		
	Daily Outdoor Storage/ per day vehicles 20' or less	<i>Storage fees will be imposed after the vehicle has been in the control of the towing operator more than 6 hours. Storage rates accrue at a rate per 24 hour period or fraction thereof.</i>	\$30.00/day
	Daily Outdoor Storage/ per day vehicles over 20'		\$2.00/foot
	Daily Indoor Storage/ per day vehicles 20' or less		\$40.00
	Daily Indoor Storage/ per day vehicles over 20'		\$2.00/foot
	Administrative Fee		
	Administrative Fee	<i>An administrative fee will be imposed on all vehicles</i>	\$25.00
	Notification/ Lien Fee	<i>After a vehicle has been in storage over 24 hours a notification/ lien fee will be charged for first notification.</i>	\$50.00
	<i>Each additional letter if administrative/ lien letter is prepared.</i>		\$20.00
	After-Hour Gate Fee		
	Maximum after-hour gate fee	<i>After-hour gate fees will not be applied between the hours of 8:00 am and 5:00pm Monday through Friday</i>	\$75.00
	Acceptable Forms of Payment		
	Cash, Money Order, Traveler's Check		
	Bank Debit/Credit Card including but not limited to MasterCard or Visa		
<i>(Ord. No. 11-22, § 7, 12-6-2011; Ord. No. 15-18, § 1, 12-16-2015)</i>			

Source: City of Key West and Walker Consultants 2018

CITY OF MIAMI

Exhibit 8: City of Miami Maximum Allowable Towing Rates

City	Non-Consent Tow Rate		
MIAMI	Class A Vehicles	Police Directed Tow (flat rate)	\$120.50
	Class B Vehicles	Police Directed Tow (flat rate)	\$197.50
	Class C Vehicles	Police Directed Tow (flat rate)	\$281.00
	Class D Vehicles	Police Directed Tow (flat rate)	\$358.00
	Drop Fee	Rate if released on scene	50.00%
	Storage Fee		
	<i>The following rates shall be set for the storage of vehicles. However, pursuant to Section 713.78 (2), Florida Statutes, no storage fee shall be charged if the vehicle is stored for less than six (6) hours.</i>		
	Daily Indoor Storage/ per day vehicles 20' or less		\$32.00
	Daily Indoor Storage/ per day vehicles 20' or more		\$52.00
	Daily Indoor Storage/ per day	<i>Small personal vehicles (motorcycles, scooters, etc.)</i>	\$15.50
	Daily Outdoor Storage/ per day vehicles 20' or less		\$26.00
	Daily Outdoor Storage/ per day vehicles 20' or more		\$46.00
	Daily Outdoor Storage/ per day	<i>Small personal vehicles (motorcycles, scooters, etc.)</i>	\$13.00
	Administrative Fee		
	Administrative Fee	<i>An administrative fee will be imposed on all vehicles</i>	\$36.25
	Acceptable Forms of Payment		
	<i>Persons operating or in charge of any storage facility where vehicles are stored pursuant to this article shall accept a valid bank credit card or cash for payment of towing and storage by a registered owner or the owner's agent claiming the vehicle.</i>		
Cash			
Bank Credit Card			
<p>The city hereby adopts and incorporates the maximum rates established by the Miami-Dade Board of County Commissioners pursuant to section 30-476 of the Miami-Dade County Code, as amended, for providing recovery, non-consent towing, removal and storage services at the request of a police agency, Miami Parking Authority or a property owner or authorized representative, with or without the prior consent of the vehicle owner or other authorized person in control of the vehicle. From time to time, the maximum rates may be altered, revised, increased or decreased by the Miami-Dade Board of County Commissioners. Such increase or decrease by the Miami-Dade Board of County Commissioners shall also apply to the city.</p>			
<i>(Ord. No. 13513, § 1, 4-9-15)</i>			

Source: City of Miami, Miami-Dade County, and Walker Consultants 2018



MONROE COUNTY

Exhibit 9: Monroe County Maximum Allowable Towing Rates

County	Non-Consent Tow Rate		
MONROE	Class A Vehicles	Nonconsensual tow (flat rate)	\$135.00
	Class B Vehicles	Nonconsensual tow (flat rate)	\$200.00
	Class C Vehicles	Nonconsensual tow (flat rate)	\$485.00
	Drop Fee	Rate if released on scene	50.00%
	Labor Rate	Labor rate fee up to \$135/hour if extraordinary effort, such as multiple tow trucks, is required.	\$135.00/hour
	Storage Fee		
	Daily Outdoor Storage/ per day vehicles 20' or less	Storage fees will be imposed after the vehicle has been in the control of the towing operator more than 6 hours. Storage rates accrue at a rate per 24-hour period or fraction thereof.	\$30.00/day
	Daily Outdoor Storage/ per day vehicles over 20'		\$2.00/foot
	Daily Indoor Storage/ per day vehicles 20' or less		\$40.00
	Daily Indoor Storage/ per day vehicles over 20'		\$2.00/foot
	Administrative Fee		
	Administrative Fee	An administrative fee will be imposed on all vehicles	\$25.00
	Notification/ Lien Fee	After a vehicle has been in storage over 24 hours a notification/ lien fee will be charged for first notification.	\$50.00
	Each additional letter if administrative/ lien letter is prepared.		\$20.00
	After-Hour Gate Fee		
	Maximum after-hour gate fee	After-hour gate fees will not be applied between the hours of 8:00 am and 5:00pm Monday through Friday	\$75.00
	Acceptable Forms of Payment		
	Cash, Money Order, Traveler's Check		
	Bank Debit/Credit Card including but not limited to MasterCard or Visa		
	(Ord. No. 013-2015 , §§ 1–12)		

Source: Monroe County and Walker Consultants 2018

CITY OF PANAMA CITY BEACH

Exhibit 10: City of Panama City Beach Maximum Allowable Towing Rates

City	Non-Consent Tow Rate		
PANAMA CITY BEACH	Class A Vehicles	<i>between the hours of 8:00 a.m. and 5:00 p.m.</i>	\$87.50
		<i>between the hours of 5:00 p.m. and 8:00 a.m.</i>	\$97.50
	Class B Vehicles	<i>between the hours of 8:00 a.m. and 5:00 p.m.</i>	\$115.00
		<i>between the hours of 5:00 p.m. and 8:00 a.m.</i>	\$125.00
	Class C Vehicles	<i>between the hours of 8:00 a.m. and 5:00 p.m.</i>	\$220.00
	Drop Fee	<i>Rate if released on scene</i>	50.00%
	Storage Fee		
	Class A Vehicles	<i>Outside Storage Fee</i>	\$15.00
		<i>Inside Storage Fee</i>	\$20.00
	Class B Vehicles	<i>Outside Storage Fee</i>	\$20.00
	Class C Vehicles	<i>Outside Storage Fee</i>	\$30.00
	Over 30 Minutes on Scene		
	Class A Vehicles	<i>Tows that extend beyond the initial thirty minutes at the scene, the towing service may charge the maximum rate per fifteen-minute block thereafter, in addition to the flat rate</i>	\$20.00/ ¼ hour
	Class B Vehicles		\$31.25/ ¼ hour
	Class C Vehicles		\$50.00/ ¼ hour
	Additional Fees		
	Notification/ Lien Fee	<i>A maximum fee may be charged to the owner of a vehicle towed and subsequently stored for more than twenty-four (24) hours, for the costs of preparing, filing or mailing of any forms or notices required by law.</i>	\$30.00
	Labor Fee		
	Class A Vehicles	<i>For tows that require inordinate labor, winching and recovery, when necessary, for vehicle removal from ditches, half submerged vehicles or off road</i>	\$78.00/hr
	Class B Vehicles		\$19.50/ ¼ hour
			\$80.00/hr
	Class C Vehicles		\$20.00/ ¼ hour
			\$175.00/hr
			\$43.75/ ¼ hour
Mileage			
Class A Vehicles	<i>Per mile for travel and towing of a vehicle outside of the ten-mile radius from the wrecker operator's place of business</i>	\$3.00/mile	
Class B Vehicles		\$4.00/mile	
Class C Vehicles		\$4.00/mile	
Acceptable Forms of Payment			
Cash, Money Order, or Cashier's Check			
(Ord. No. 364, § 1, 5-31-90; Ord. No. 395, § 1, 6-11-92; Ord. No. 935, § 1, 3-24-05; Ord. No. 1080, § 1, 7-26-07; Ord. No. 1105, § 1, 2-14-08; Ord. No. 1134, § 1, 10-9-08)			

Source: Panama City Beach and Walker Consultants 2018

PINELLAS COUNTY

Exhibit 11: Pinellas County Maximum Allowable Towing Rates

County	Non-Consent Tow Rate		
PINELLAS	Class A Vehicles	Nonconsensual tow (flat rate)	\$100.00
	Class B Vehicles	Nonconsensual tow (flat rate)	\$200.00
	Class C Vehicles	Nonconsensual tow (flat rate)	\$300.00
	Class D Vehicles	Nonconsensual tow (flat rate)	\$400.00
	Storage Fee		
	Class A Vehicles	Storage fees, as set forth by Vehicle Class, may be assessed after the first 6 hours beginning from the time the vehicle is delivered to the storage facility and will accrue at a rate of fee for each 24 hour thereafter.	\$20.00
	Class B Vehicles		\$30.00
	Class C Vehicles		\$60.00
	Class D Vehicles		\$60.00
	Mileage Rate		
	Class A Vehicles	Mileage rate/per mile, in addition to flat rate, for Nonconsensual Tow	\$3.00
	Class B Vehicles		\$3.00
	Class C Vehicles		\$3.00
	Class D Vehicles		\$6.00
	Over 30 Minutes on Scene		
	Class A Vehicles	Nonconsensual tow, (time beyond initial 30 minutes at scene) per 15-minute block	\$15.00
	Class B Vehicles		\$50.00
	Class C Vehicles		\$75.00
	Class D Vehicles		\$100.00
	Administrative Fee		
	Administrative Fee	An administration fee may be charged after the first 24 hours of fee storage so long as the towing service has actually complied with the requirements of F.S. § 713.78.	\$30.00
	Notification/ Lien Fee	A filing of lien notice fee of \$30.00 may also be charged to cover the execution and mailing of the lien notice so long as the towing service has actually complied with the requirements of F.S. § 713.78.	\$30.00
	Acceptable Payment Forms		
A person, operator, firm or corporation that provides nonconsensual towing and storage services shall accept payment for charges from the vehicle owner or authorized representative in the following forms:			
Cash			
Major Credit Card			
Debit Card			
Additional costs or fees in excess of three percent (3%) of the fee, or an amount adopted by resolution, for towing shall not be assessed by reason of payment being made by debit or credit card.			
(Ord. No. 00-59, § 5, 8-8-00; Ord. No. 16-49, § 5, 8-23-16)			

Source: Pinellas County and Walker Consultants 2018

CITY OF TAMPA

Exhibit 12: City of Tampa Maximum Allowable Towing Rates

City	Non-Consent Tow Rate		
TAMPA	Class A Vehicles	Nonconsensual tow (flat rate)	\$125.00
	Class B Vehicles	Nonconsensual tow (flat rate)	\$160.00
	Class C Vehicles	Nonconsensual tow (flat rate)	\$350.00
	Drop Fee	Rate if released on scene	50.00%
	Storage Fee		
	Class A Vehicles	Storage fees will be imposed after the vehicle has been in the control of the towing operator more than 6 hours. Storage rates accrue at a rate per 24-hour period or fraction thereof.	\$25.00
	Class B Vehicles		\$35.00
	Class C Vehicles		\$55.00
	Over 30 Minutes on Scene		
	Class A Vehicles	For non-consensual tows that extend beyond the initial thirty minutes at the scene, the towing service may charge the maximum rate per fifteen-minute block thereafter, in addition to the flat rate	\$20.00/ ¼ hour
	Class B Vehicles		\$31.25/ ¼ hour
	Class C Vehicles		\$50.00/ ¼ hour
	Labor Fee		
	Class A Vehicles	For tows that require inordinate labor, winching and recovery, when necessary, for vehicle removal from ditches, half submerged vehicles or off road	\$100.00/hr
	Class B Vehicles		\$125.00/hr
	Class C Vehicles		\$275.00/hr
	Additional Fees		
	Notification/ Lien Fee	A filing and processing fee shall only be charged if the towing service has complied with the requirements of Section 713.78, Florida Statutes	\$75.00
	After-Hour Gate Fee		
	Maximum after-hour gate fee	When vehicles requested to be released after hours, or on days which the towing service is closed, may charge a service fee.	\$50.00
	Mileage		
	Class A Vehicles	In addition to the flat rate, the towing service may charge for mileage at a maximum rate per mile for a non-consensual tow	\$5.00/mile
	Class B Vehicles		\$5.00/mile
	Class C Vehicles		\$6.00/mile
	Acceptable Forms of Payment		
	Cash		
	Money Order or Cashier's Check		
	Debit Card (NOT Credit Card)		
(Ord. No. 00-2, § 5, 1-27-2000)			

Source: City of Tampa, Hillsborough County, and Walker Consultants 2018

WEST PALM BEACH
Exhibit 13: City of West Palm Beach Maximum Allowable Towing Rates

City	Non-Consent Tow Rate		
WEST PALM BEACH	Class A Vehicles	Police Directed Tow (flat rate)	\$167.00
	Class B Vehicles	Police Directed Tow (flat rate)	\$248.00
	Class C Vehicles	Police Directed Tow (flat rate)	\$370.00
	Class D Vehicles	Police Directed Tow (flat rate)	\$530.00
	Drop Fee	Rate if released on scene	50.00%
	Storage Fee		
	Daily Outdoor Storage/ per day vehicles 25' or less	Storage fees will be imposed after the vehicle has been in the control of the towing operator more than 6 hours. Storage rates accrue at a rate per 24-hour period or fraction thereof.	\$25.00
	Daily Outdoor Storage/ per day vehicles over 25'		\$35.00
	Daily Outdoor Storage/ per day small personal vehicles		\$15.00
	Daily Indoor Storage/ per day vehicles 25' or less		\$35.00
	Daily Indoor Storage/ per day vehicles over 25'		\$50.00
	Daily Indoor Storage/ per day small personal vehicles		\$20.00
	Additional Fees		
	Administrative/ Lien Fee	After 24 hours from time of police report. Must show proof lien letters have been prepared.	\$50.00
	Over 30 Minutes on Scene		
	Extra Time at Scene	First ½ hour included in initial flat fee; subsequent charges at 15 minute intervals.	25% of towing fee in 15 min. increment
	After-Hour Gate Fee		
	Maximum after-hour gate fee	After-hour gate fees will not be applied between the hours of 8:00 am and 6:00pm Monday through Friday	\$35.00
	Acceptable Forms of Payment		
	Cash, Money Order, Traveler's Check		
Bank Debit/Credit Card including but not limited to MasterCard or Visa			
(Ord. No. 2011-008, § 10, 5-17-11)			

Source: City of West Palm Beach, Palm Beach County, and Walker Consultants 2018