**ROUTED ALUM. LED ILLUM'D BLADE SIGN W/ PUSH THRU ACRYLIC GRAPHICS**

- Ptd. Target Red (top 6ft.) and white (bottom 3ft.)

**Everbrite**

Everbrite, LLC
4949 South 110th Street
P.O. Box 20020
Greenfield, WI 53220-0020
www.everbrite.com

All ideas, plans or arrangements indicated in this drawing are copyrighted and owned by Everbrite and may not be reproduced, used by or disclosed to any person, firm or corporation for any purpose whatsoever, without written permission.

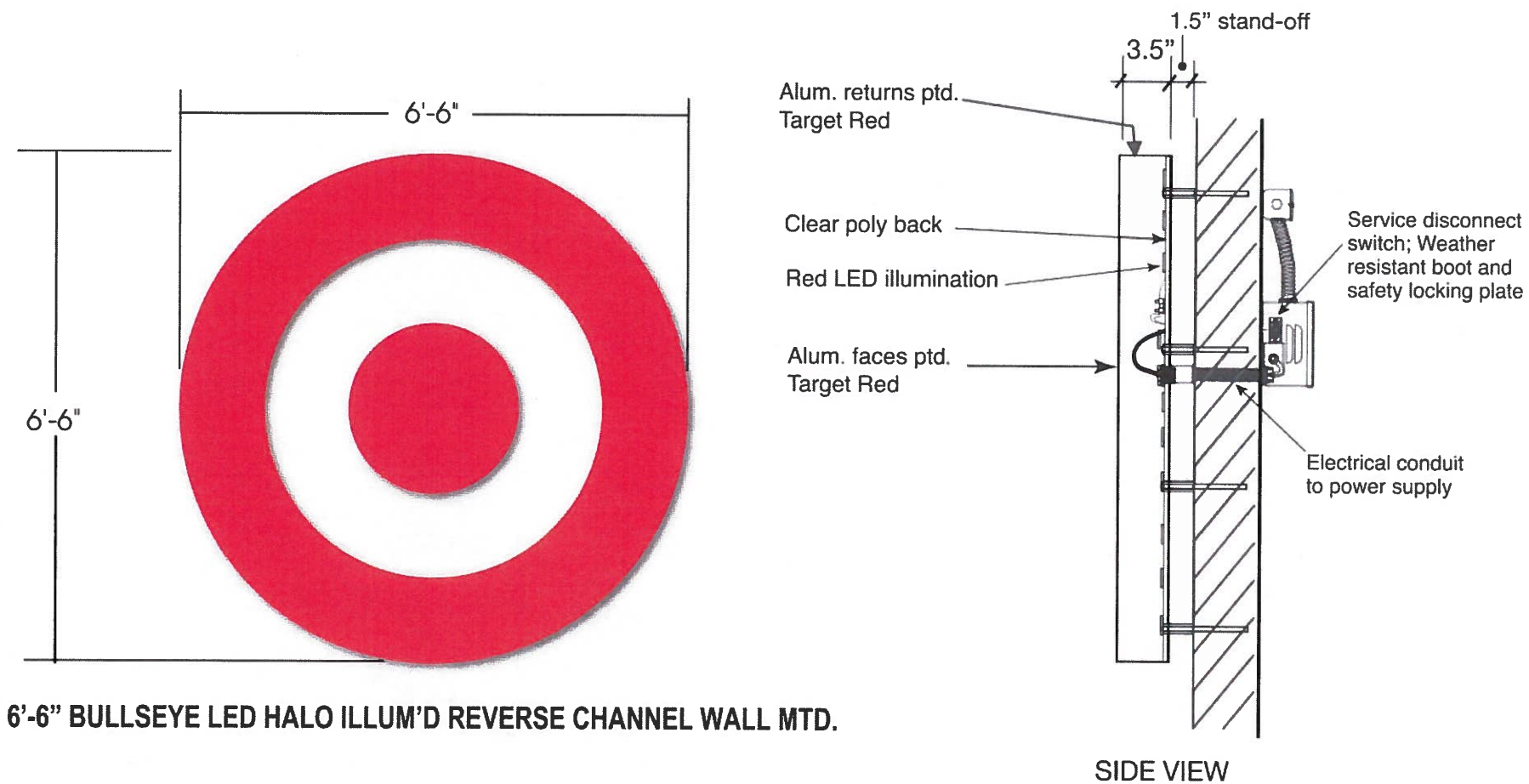
Site: TARG3269 2019FLEX MIAMI BEACH, FL

Prepared By: Lindsey Arndt; 388467-0

Date: 10/03/2018

Page 6 of 11





Everbrite

Everbrite, LLC
4949 South 110th Street
P.O. Box 20020
Greenfield, WI 53220-0020
www.everbrite.com

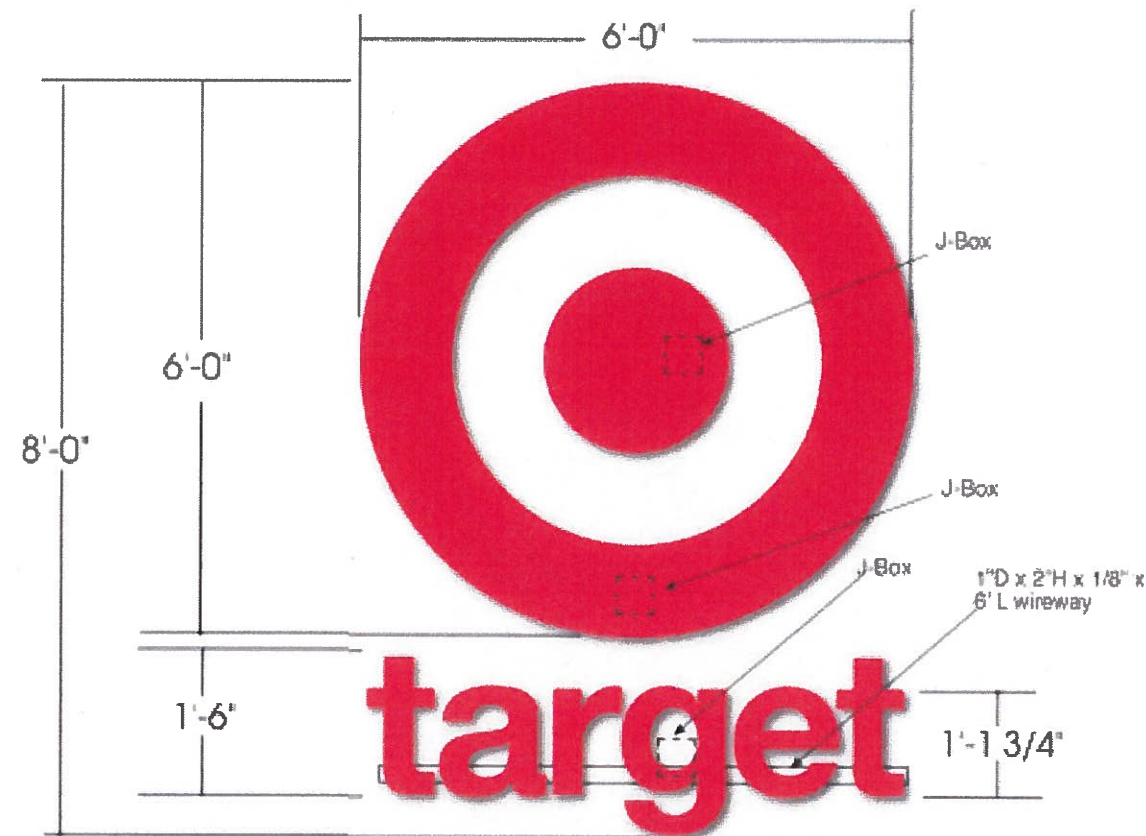
All ideas, plans or arrangements indicated in this drawing are copyrighted and owned by Everbrite and may not be reproduced, used by or disclosed to any person, firm or corporation for any purpose whatsoever, without written permission.

Site: TARG3269 2019FLEX MIAMI BEACH, FL

Prepared By: Lindsey Arndt; 388467-0

Date: 10/03/2018

Page 7 of 11

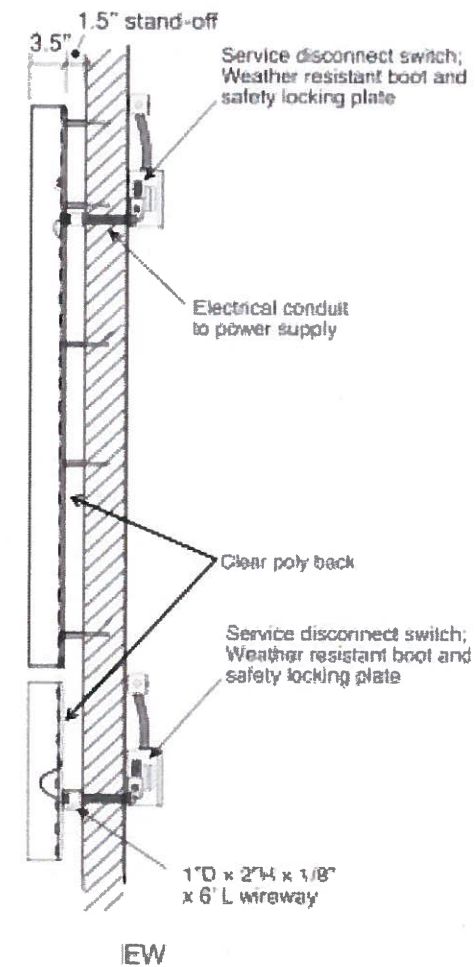


6'-0" BULLSEYE / 18" TARGET STACKED LED HALO ILLUM'D

Target letters to have a 1.5"D x 2"H x 1/8" x 6'L finished wireway behind the letters & 1" pin mount the top part of the letters. This is needed due to no access behind the elevator shaft to wire the sign;
End caps on wireway; (Wireway color to be finished a light gray color to match natural concrete (so as to disappear).

Conduit path & 3 j-boxes have been embedded in the concrete hoistway wall anticipating this sign design & installation, leading to tenant space.

GC will include a j-box at the outer ring and dot of the bullseye and one for the target letters.



Everbrite

Everbrite, LLC
4949 South 110th Street
P.O. Box 20020
Greenfield, WI 53220-0020
www.everbrite.com

All ideas, plans or arrangements indicated in this drawing are copyrighted and owned by Everbrite and may not be reproduced, used by or disclosed to any person, firm or corporation for any purpose whatsoever, without written permission.

Site: TARG3269 2019FLEX MIAMI BEACH, FL

Prepared By: Lindsey Arndt; 388467-0

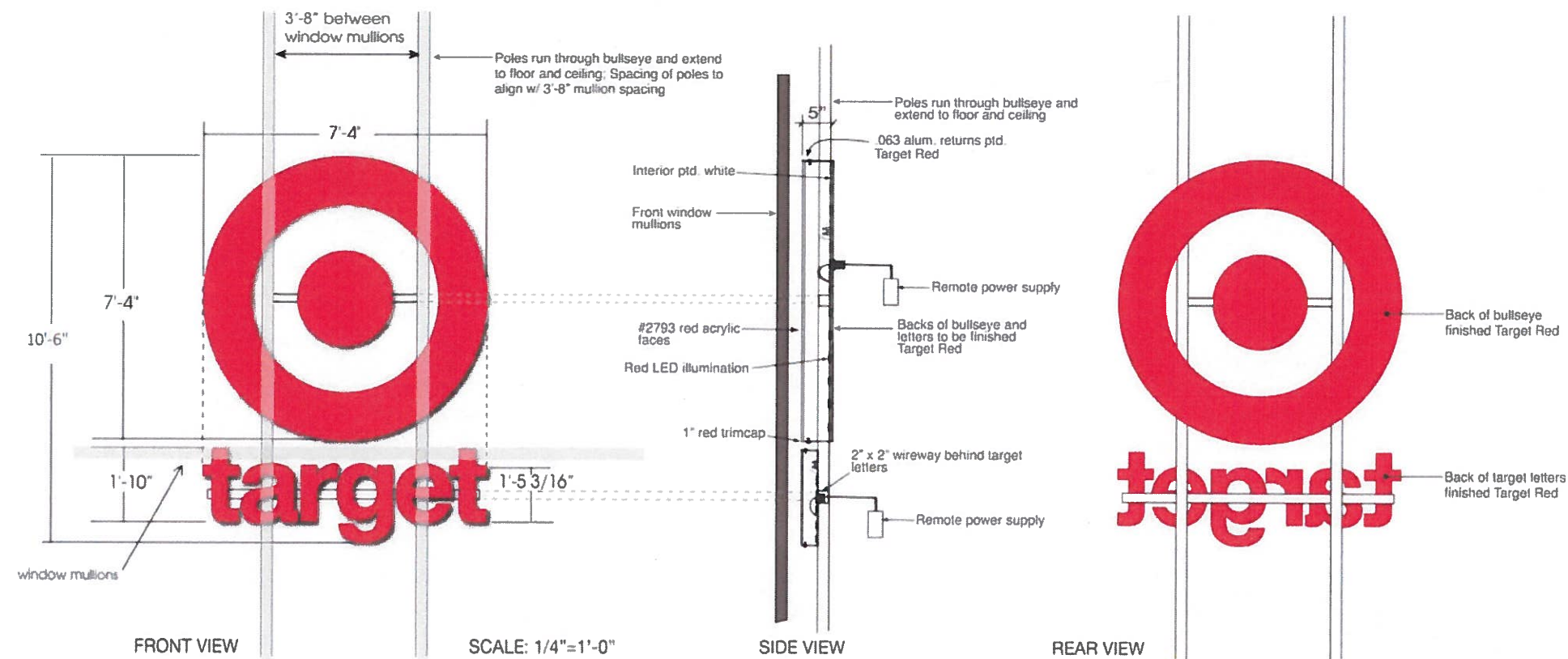
Date: 10/03/2018

Page 8 of 11



D

7'4" Bullseye, 1'10" target - Behind Glass



7'-4" BULLSEYE / 22" TARGET STACKED LED CHANNEL LETTERS- RED

NOTE: Interior installation behind window mullions

**Everbrite**

Everbrite, LLC
4949 South 110th Street
P.O. Box 20020
Greenfield, WI 53220-0020
www.everbrite.com

All ideas, plans or arrangements indicated in this drawing are copyrighted and owned by Everbrite and may not be reproduced, used by or disclosed to any person, firm or corporation for any purpose whatsoever, without written permission.

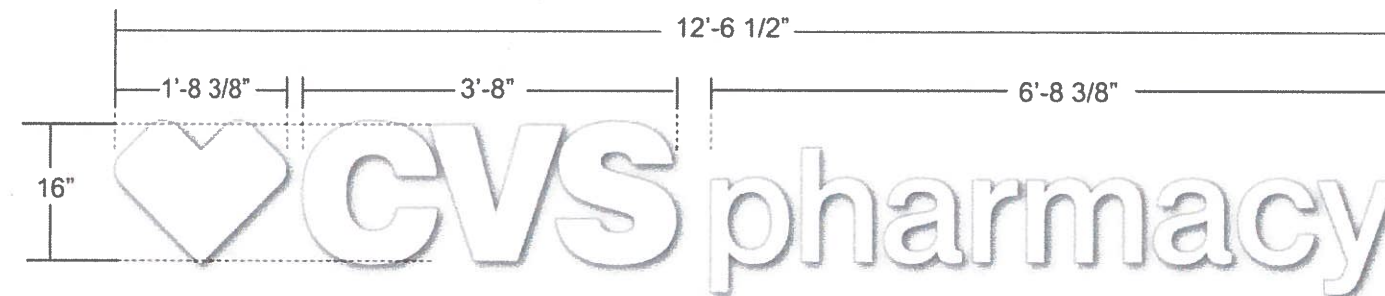
Site: TARG3269 2019FLEX MIAMI BEACH, FL

Prepared By: Lindsey Arndt; 388467-0

Date: 10/03/2018

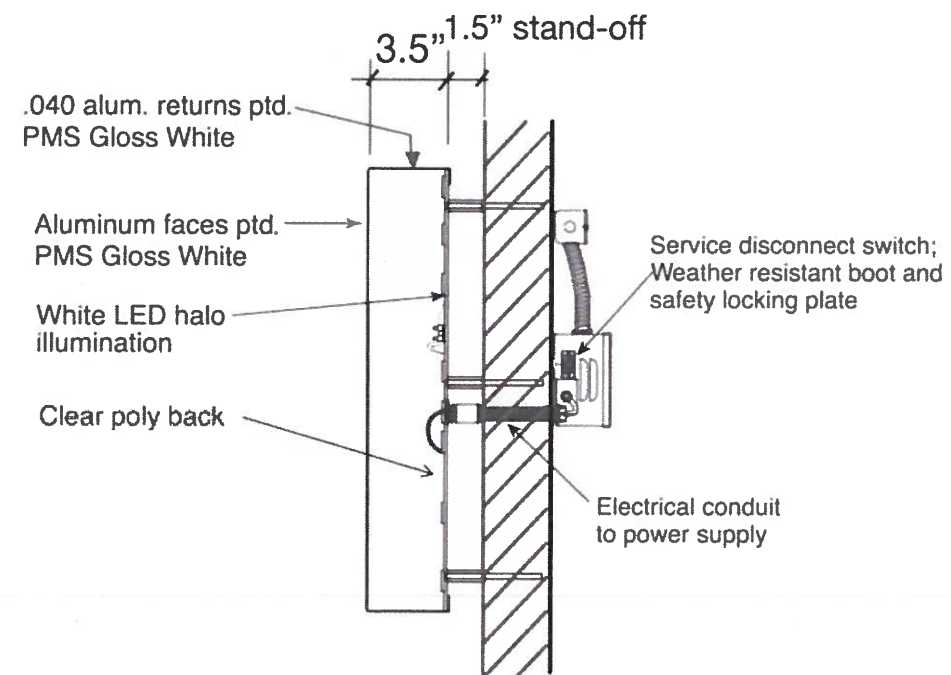
Page 9 of 11





16" LED HALO ILLUM'D WHITE REVERSE CHANNEL LETTERS

NOTE: Dimenions may vary slightly pending final engineering



Everbrite

Everbrite, LLC
4949 South 110th Street
P.O. Box 20020
Greenfield, WI 53220-0020
www.everbrite.com

All ideas, plans or arrangements indicated in this drawing are copyrighted and owned by Everbrite and may not be reproduced, used by or disclosed to any person, firm or corporation for any purpose whatsoever, without written permission.

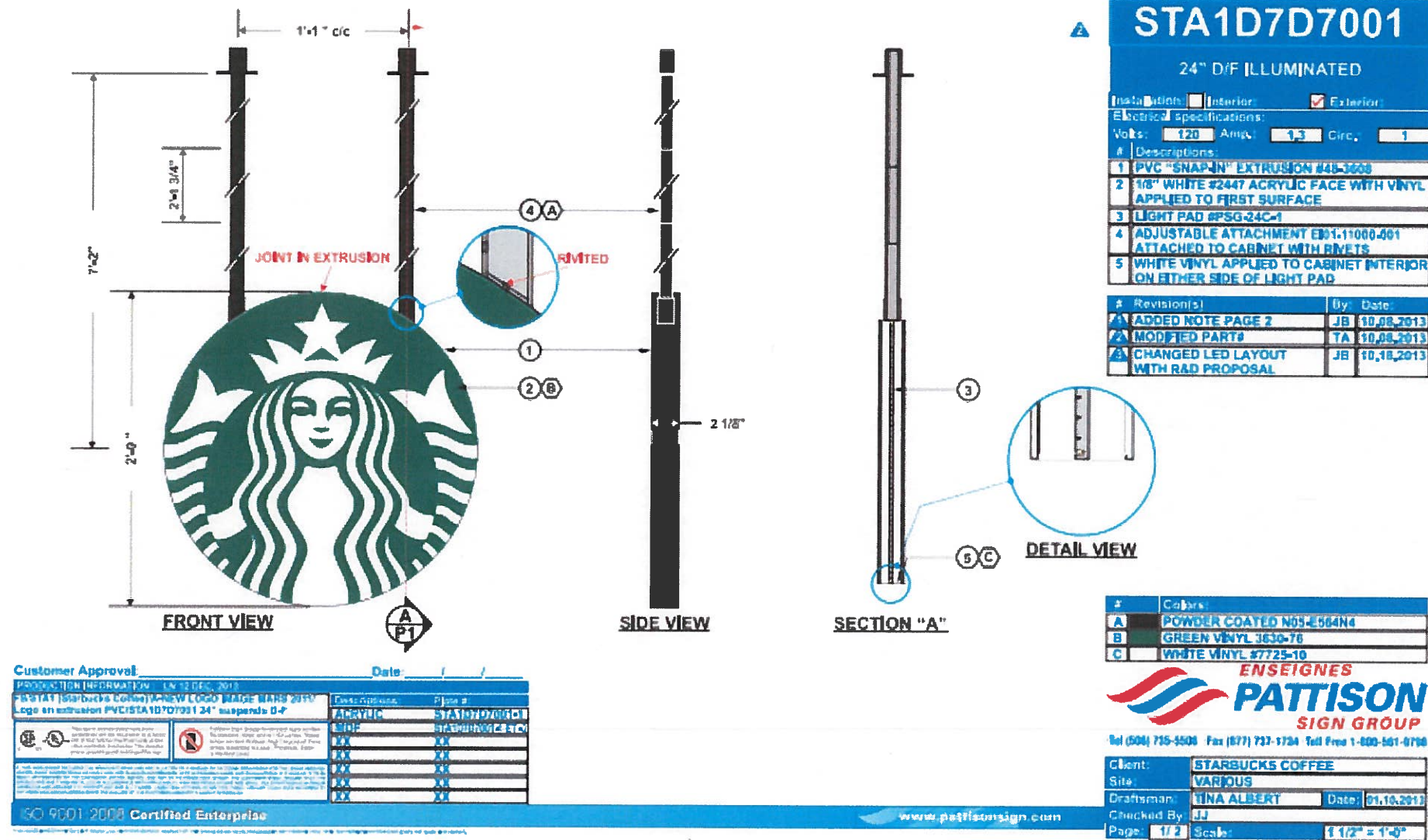
Site: TARG3269 2019FLEX MIAMI BEACH, FL

Prepared By: Lindsey Arndt; 388467-0

Date: 10/03/2018

Page 10 of 11





Everbrite

Everbrite, LLC
4949 South 110th Street
P.O. Box 20020
Greenfield, WI 53220-0020
www.everbrite.com

All ideas, plans or arrangements indicated in this drawing are copyrighted and owned by Everbrite and may not be reproduced, used by or disclosed to any person, firm or corporation for any purpose whatsoever, without written permission.

Site: TARG3269 2019FLEX MIAMI BEACH, FL

Prepared By: Lindsey Arndt; 388467-0

Date: 10/03/2018

Page 11 of 11