

The BLVD at Lenox

1045 5th Street Miami Beach, Florida

VIEW - LENOX

October 3, 2018

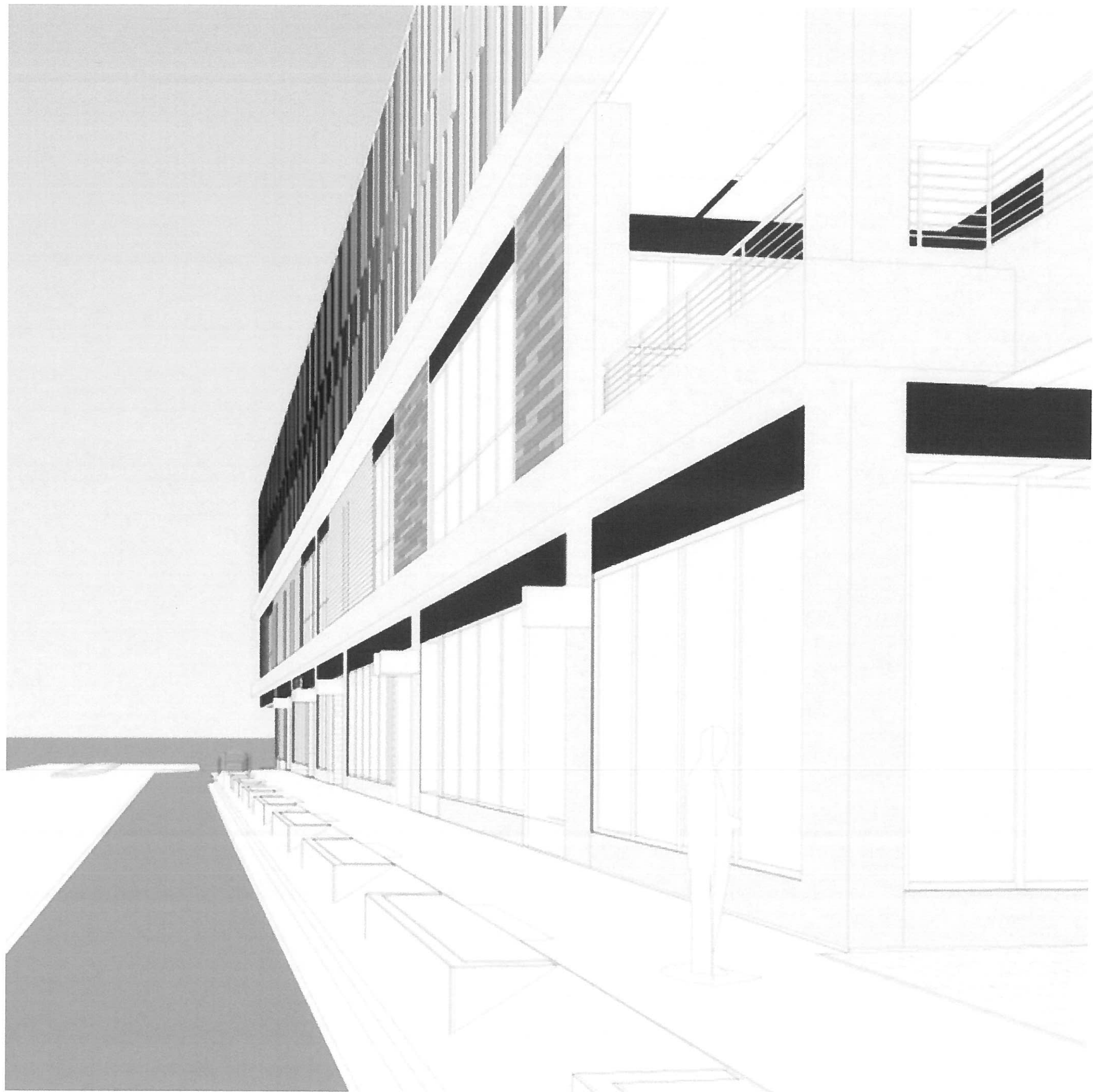
No copies, transmissions, reproductions, or electronic revisions of any portions of these drawings in whole or in part be made without the express written permission of Zyscovich Architects. All designs indicated in these drawings are property of Zyscovich Architects. All copyrights reserved © 2018.

ZYSCOVICH
ARCHITECTS

100 N Biscayne Blvd., 27th Fl
Miami, FL 33132.2304
t 305.372.5222 f 305.577.4521

e info@zyscovich.com
w www.zyscovich.com

SIGN-6



PERMIT DRAWING
DETAIL

BLVD at Lenox Technical Details
BLADE SIGN
LED ILLUMINATED

TOTAL OF (2) TRANSFORMERS
TOTAL OF 5.6 AMPS

Power Requirements: 120V - 20 AMP Circuit

No 12 COPPER WIRE FOR GROUNDING/BONDING
OF SIGN AS PER NEC 250 TIME DEVICE REQUIRED
FOR EACH CIRCUIT PER FBC
IN COMPLIANCE WITH THE "FLA. ENERGY CODE"

ALL ELECTRICAL COMPONENTS ARE UL LISTED
SIGN GROUNDED ACCORDING TO NEC 600

"CODES IN EFFECT" NEC 2014
AND FBC 2017 C405.2.5.3 (6TH EDITION)

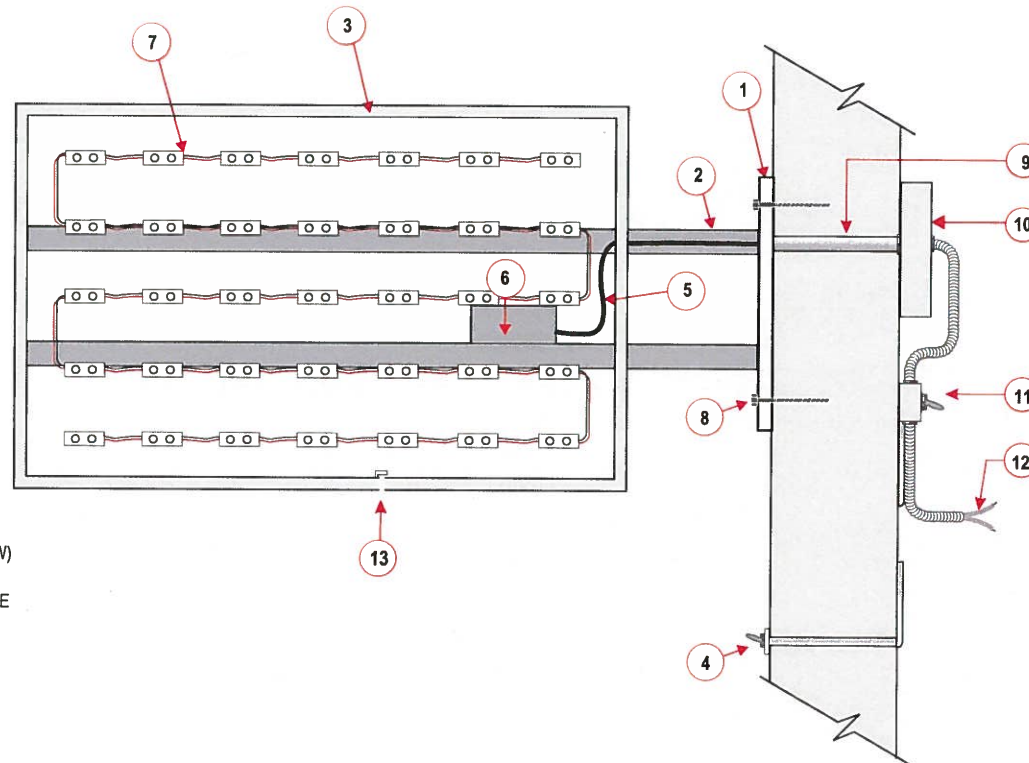
ELECTRICAL INFORMATION
2- TRANSFORMERS @ 2.8 AMPS EACH

TOTAL LOAD = 5.6 AMPS
1 - 20 AMP CIRCUIT REQUIRED
1 - 20 AMP DISCONNECT SWITCH
1/2" FLEX CONDUIT WITH 3 THWN WIRES
TO EXISTING PRIMARY LINE BY OTHERS
TIME DEVICE BY OTHERS
SIGN BEARS MANDATORY UL LABELS SIGN
GROUNDING AND BONDING AS PER NEC 250
CIRCUIT # 8

 THIS PRODUCT IS LISTED BY UNDERWRITERS
LABORATORY AND BEARS THE LABELS.

DETAILS

- 1 1/2" THICK STEEL PLATE
- 2 1 1/2" ALUMINUM SQUARE TUBE
WELDED TO ALUMINUM PLATE
- 3 FABRICATED 1 1/2" ALUMINUM ANGLE FRAME.
- 4 (1) 20 AMP EXTERNAL DISCONNECT SWITCH
- 5 GTO SECONDARY WIRE R. FOR 105 DEGREES
- 6 2-TRANSFORMERS(5.6 AMPS TOTAL)
- 7 LED MODULES
- 8 1/4" DIA FASTENERS (SEE HARDWARE CHART BELOW)
- 9 HALF INCH (1/2") CONDUIT W/ #12 THW PRIMARY WIRE
OR 9/16" WALL BUSTERS
- 10 (1) POWER SUPPLY (LOW VOLTAGE)
- 11 1-20 AMP INTERNAL DISCONNECT SWITCH
- 12 EXISTING ELECTRICAL WIRING TO PRIMARY
ELECTRICAL SOURCE (BY OTHERS)
- 13 WEEP HOLES (IF APPLICABLE)



MOUNTING HARDWARE CHART

	CONCRETE	WOOD	EIFS	METAL
1/4" X 2 1/2" LAGS (WOOD SCREWS)		*		
1/4" X 2 1/2" SELF TAPPING				*
1/4" X 2 1/2" TAP-CONS	*			
1/4" X 2 1/2" SLEEVE ANCHORS (RED HEAD)	*			
1/4" BOLTS THRU WALL W/ NUT & WASHER	*	*	*	*
1/4" TOGGLE STRAPS	*	*	*	*
1/4" TOGGLE BOLTS	*	*	*	*

ELECTRICAL INFO

"CODES IN EFFECT" NEC 2014 AND FBC 2017 C405.2.5.3 (6TH Edition)
EACH SIGN WILL HAVE ITS OWN DEDICATED CIRCUIT. NO OTHER LOAD
WILL BE SUPPLIED BY THE SIGN CIRCUIT PER NEC 600.6(A)(1) & NEC 6.2
EACH SIGN WILL HAVE A DISCONNECT SWITCH IN VIEW.
ALL SIGNAGE WILL BE CONTROLLED BY A ASTRONOMICAL TIME WITH
A MIN 10 HOURS OF BACK-UP PER NEC 600.6 & FBC 13-415.AB.1.4

OPTIONAL MEANS OF SIGNAGE DISCONNECTION

- (1) DISCONNECT SWITCH on an individual channel letter(all types) or cabinet sign (all types)
- (2) DISCONNECT SWITCH on the wall (any type), eyebrow, hanging slab, canopy mansored roof...
- (3) LOCK-OUT SWITCH at the existing circuit breakers(s) inside of property
- (4) TIME MANAGEMENT SYSTEM as utilized to control all lighting/signs/other appliances
as utilized by a store/place of business...

SIGN MARKINGS:

(A) Signs and outline lighting systems.
Signs and outline lighting systems shall be marked with the manufacturer/s name,
trademark, or other means of identification; and input voltage and current rating.

(B) Signs with lampholders for incandescent lamps.
Signs and outline lighting systems with lampholders for incandescent lamps shall
be marked to indicate the maximum allowable lamp wattage per lampholder. The
markings shall be permanently installed, in letters at least 6 mm (1/4 in.) high, and
shall be located where visible during relamping.

(C) Section Signs.
Section Signs shall be marked to indicate that field-wiring and installation instructions
are required. The electrical connections to same are under a different permit.



540 W. 83 Street
Hialeah, FL 33014
305-362-3333

www.acusigns.com

Project:
BLVD at Lenox

Address:
1045 5th St,
Miami Beach, FL 33139

Account Manager:
Ralph Moreno

Designer:
Martin Rodger

Scale:
N.T.S.

Date:
10/3/18

This is an original drawing property of ACU SIGNS, and may not
be used in whole or in part without written permission. It is not to be
shown to anyone outside of your organization, reproduced, copied
or exhibited in any fashion. Drawing shall be returned promptly
upon or before completion of negotiations or customer agrees to
accept a charge levied by the corporation for retention of same.
this statement shall become a part of the drawing to which it is
attached. Note: The colors depicted here are a graphic
representation. Actual colors may vary. See color specifications.



No.

Sheet:
1 of 4

CLIENT APPROVAL

- ☐ APPROVED AS SHOWN
☐ APPROVED WITH CHANGES
☐ DISAPPROVED

DATE: / /2018

BY: (PLEASE PRINT NAME)

SIGNATURE

19'-5" LF = min. 15 SF 27'-1" LF =

4'-0"

**Project
Directory
24 SF**

6'-0"

15 SF

20

1

2

12 SF

8'-11"

SOUTH ELEVATION