

MIAMI BEACH
RISING
ABOVE



URBAN LAND INSTITUTE (ULI)

ULI OBSERVATIONS: “Acted with courage to fix sunny day and stormwater flooding”

“Applied good practice for initial pump rollout – engineering and prioritization, initiated street elevations, designed for mid-level climate risk, raised funds through fees, crafted thoughtful communications... collaborated... implemented multiple levers including policy changes, examining cost/benefits...”

April 2018



Introducing the ULI Panel...



ULI Advisory Services Panel

VISION

- *Integrate stormwater management into the larger resilience strategy*
- *Enhance trust, trust the public, increase transparency*
- *Elevate aesthetics and function to perpetuate city's cultural relevance*
- *Actively use green and open spaces for sponge function*
- *Increase long term financial and comprehensive protection*
- *Go big on the resilience brand – distinguish yourself from your coastal competitors*

ULI Recommendations

STORMWATER & CLIMATE ADAPTATION PRINCIPLES

- *Maintained urgency,*
- *incrementalism & evaluation,*
- *transparency,*
- *ecological health,*
- *financial pragmatism,*
- *co-benefits,*
- *social equity,*
- *cultural identity,*
- *living with water,*
- *long-term and regional perspective*



ULI Recommendation 1

Infrastructure:

- Blue/green infrastructure
- Water quality enhancements
- Enhanced, integrated and multi-risk modeling
- Living with water pilot projects
- Level of service
- Income generating solar power
- Blue corridor



ACTIONS TO DATE

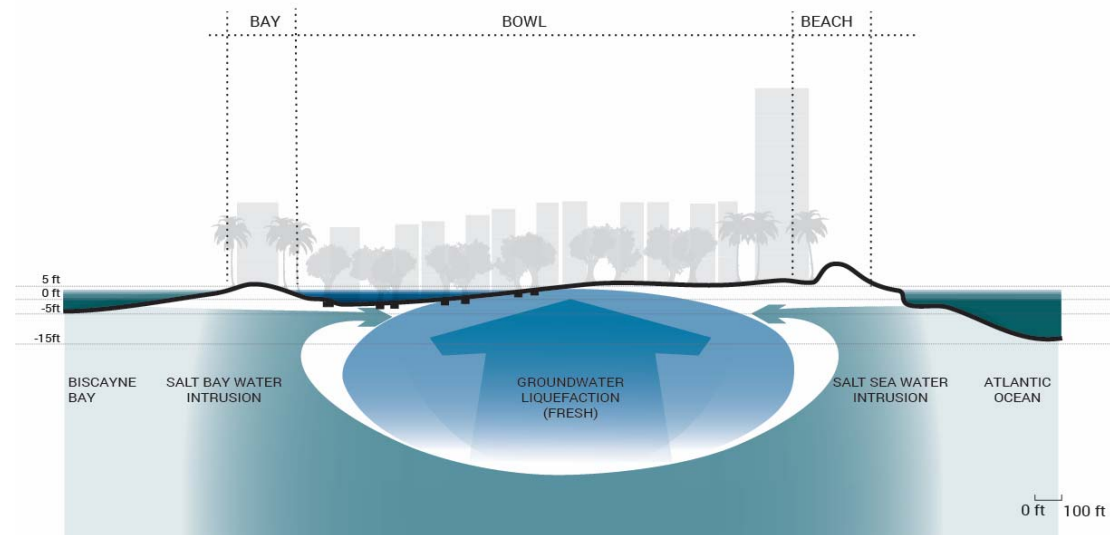
- READY Team (convened April 2018)
- 100 RC Resilience Accelerator for West Avenue (August 2018)
- RFQ for a Comprehensive & Integrated Stormwater Master Plan and Design Criteria Professional (underway)
- Integrated Water Modeling Market Research (underway)
- Dr. Charles Rowney Water Quality Analysis (complete)
- Street Tree Management Plan (underway)
- Amending Land Use Regulation (Policy discussion)

ULI Recommendation 2

Design Typologies: →

- Golf course as underused greenspaces
- Enhance road permeability
- Solar and renewable opportunities

ACTION: Under staff review



ULI Recommendation 3

Creative placemaking:

- Partner with local arts and culture stakeholders
- Incorporate public art into stormwater strategy
- Involve artists in design



ArtCenter
SOUTH FLORIDA



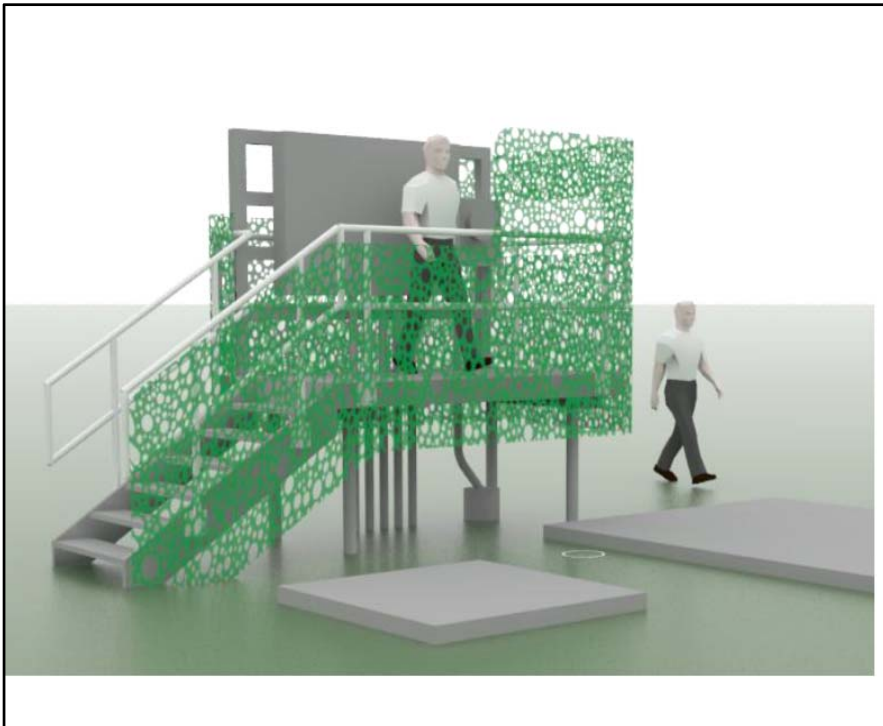
ACTION

- Resilience Artist in Residency (underway)
- West Lots Planning (underway)
- 41st Street Master Plan (underway)
- Design Review Board-approved pump-station screening (underway)
- Further develop Miami Beach Rising Above Resiliency App (funding needed in FY 19/20)

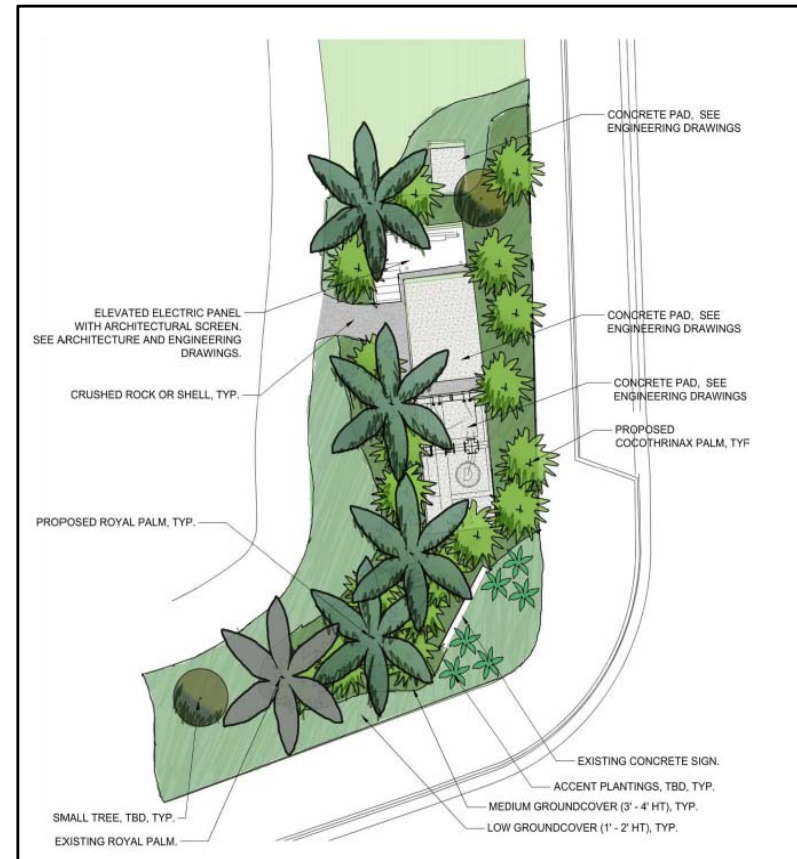
Design Review

Board-approved pump-station screening (approved)

ARCHITECTURAL SCREENING MATERIAL



LANDSCAPED SCREENING



ULI Recommendation 4

Governance:



- Identify, redirect or reorganize staff for:
 - Rising Above Delivery Office
 - Agency for Public Investment & Development in Resilience
 - Risk Transfer Department
- Create a scientific advisory panel
- Create a Community Adaptation Fund
- Align for historic preservation & climate strategies

ACTION

- Negotiating contract with the consultant to develop Design Guidelines for Historic Preservation in the face of Climate Change (underway)
- Other recommendations under staff review

“New adaptation and mitigation tools are needed to support communities as they respond to the new normal.”
– *The National Trust for Historic Preservation*

ULI Recommendation 5

Financing:

- Assessment districts (BID, HOA)
- Incremental finance districts – community reinvestment areas
- Risk management function should be driven a total cost of risk approach (TCOR)
- Engage private financial stakeholders
- Adjust stormwater fees based on runoff
- Community adaptation fund for low interest adaptation loans
- Insurance as a form of risk transfer
- Integrate finance into communications strategy



ACTION

- Business case analysis first task order (underway)
- Exploring parametric insurance for resort taxes (underway)
- City's Financial Advisor is engaged with rating agencies, reports on sea level rise risk, and the progress and continuous improvement of our stormwater program (June 2018)
- Exploring Special Assessment Districts for sea walls (underway)

ULI Recommendation 6

Regulations:



- Embed water management goals in the development regulations
- Leverage and reform regulatory boards
- Establish specific measurable water management goals at district level
- Adjust stormwater fees
- Create island-wide sea barrier through some form of an assessment rather than leaving this up to individual owners
- Continue to support elevation for new construction

ACTION

- Build upon recent changes to land use boards requiring a sea level rise and resilience review of pending developments (July 2017)
- Requires further policy/legislative change



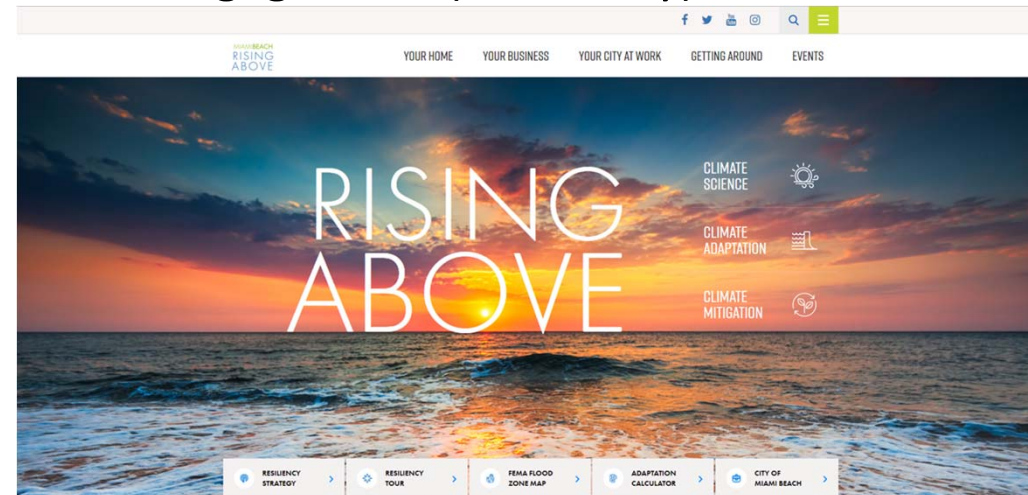
ULI Recommendation 7

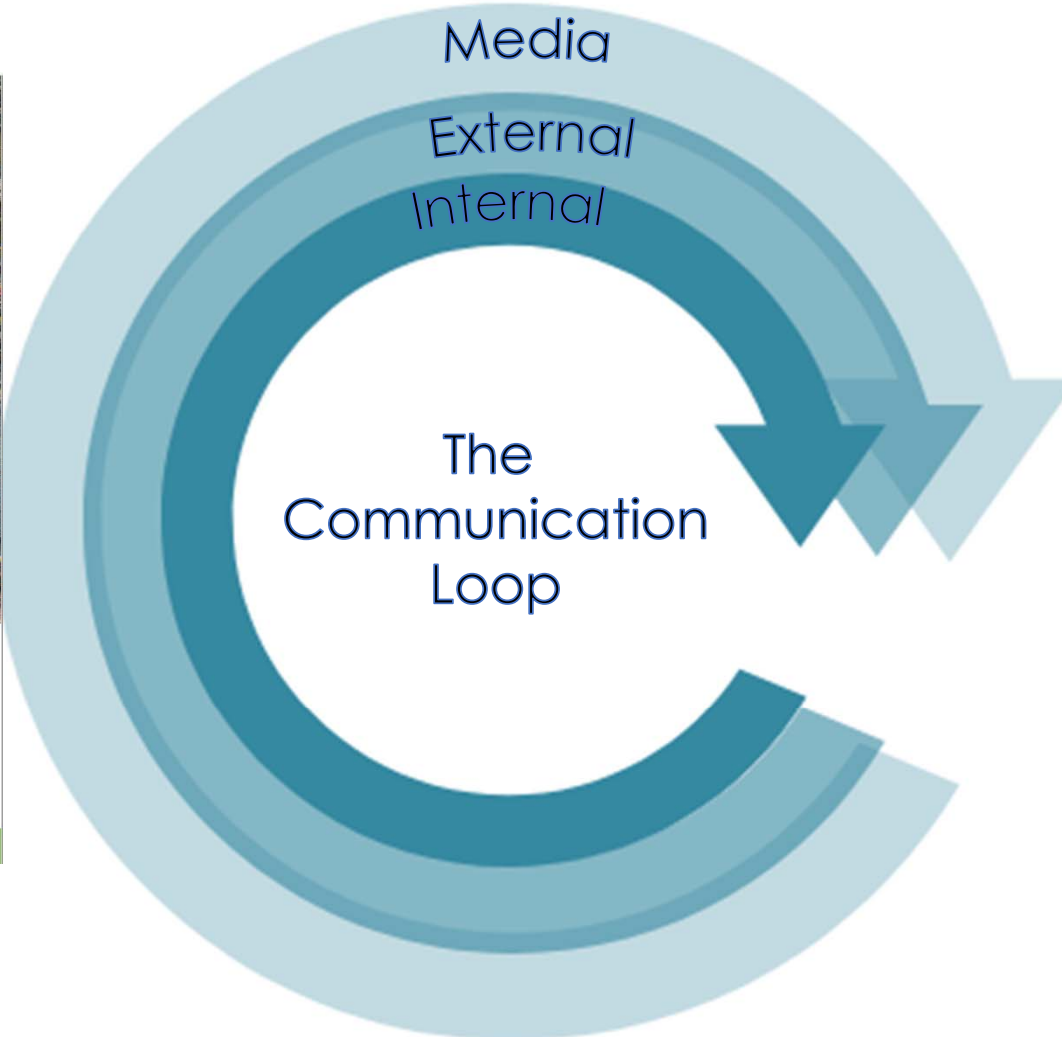
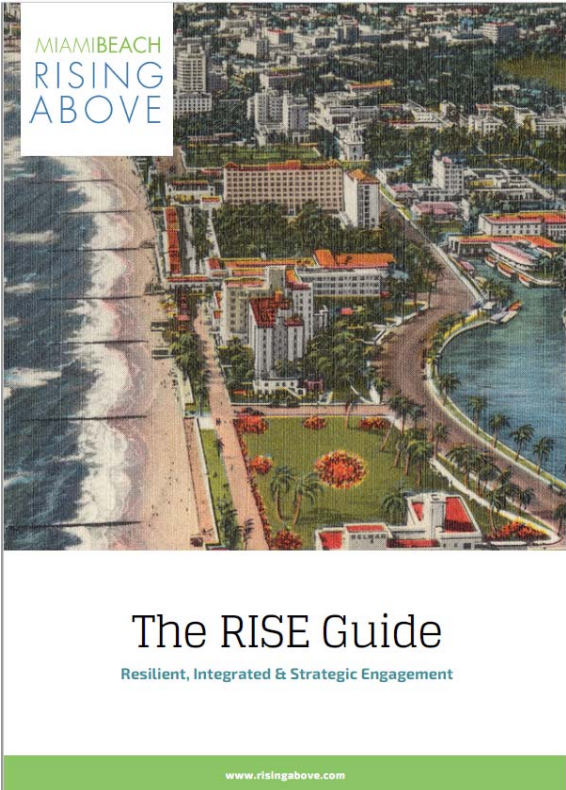
Integrated Communications Plan:

- Promote Rising Above website as the primary resource
- Be bolder in communications strategy
- Build public trust through clarity and transparency
- Create a broad communications plan
- Increase diversity and robustness of communications
- Solicit community input
- Recognize achievements and successes

ACTION

- Developing tools for internal integration and internal communications (underway)
- Developing integrated external communications plan for stakeholder engagement (underway)





“Designed to increase message consistency, trusting relationships, and knowledge sharing among our government and members of the community”.

IMPLEMENTATION STRATEGY



Miami Beach Advisory Services Panel Report: Summary of Recommendations

Topic	LEAD	SUPPORT	Recommendation	TYPE (administrative, legislative, research needed)	LEAD (person- owner/champion) Committee	Support (team)	\$\$ FUNDING NEEDS (yes/no)	STATUS (recent action, next action)
Infrastructure	PWD,CIP	E&S, PLANNING, COUNTY(?)	1 Improve flexibility and robustness of current stormwater system					
			2 Create an integrated, hydrodynamic computer model to better inform decision making on flooding issues and risk					
			Engage an owner's representative to consult on product selection					
			Purchase integrated modeling software					
			Add "flood risk model manager" position to ensure most productive					
			3 Implement blue and green infrastructure to advance a more holistic living-with-water					
			4 Ensure appropriate modeling, study, and funding availability for green					
			5 Implement living-with-water pilot projects					
			6 Create tools for living-with-water projects at the building level					
7 Consider a level-of-service concept to guide future decision making								
8 Address water quality concerns								
9 Improve communications about engineering and infrastructural solutions								

Next Steps

MIAMI BEACH RISING ABOVE

- October City Commission for report acceptance
- Monthly updates at the Commission's Sustainability and Resilience Committee (SRC) to develop legislative and policy actions items and to consider budget implications
- Bi-weekly review at the City Manager's READY Team
- Develop and use recommendation tracking chart



Thank you!

MIAMIBEACH
RISING
ABOVE

