

**CROWN CASTLE
SMALL WIRELESS FACILITIES
(SFL10258)
685 WASHINGTON STREET**

PROPOSED SITE PLAN

N.T.S.

July 16, 2018

R.J. HEISENBOTTLE ARCHITECTS, P.A.

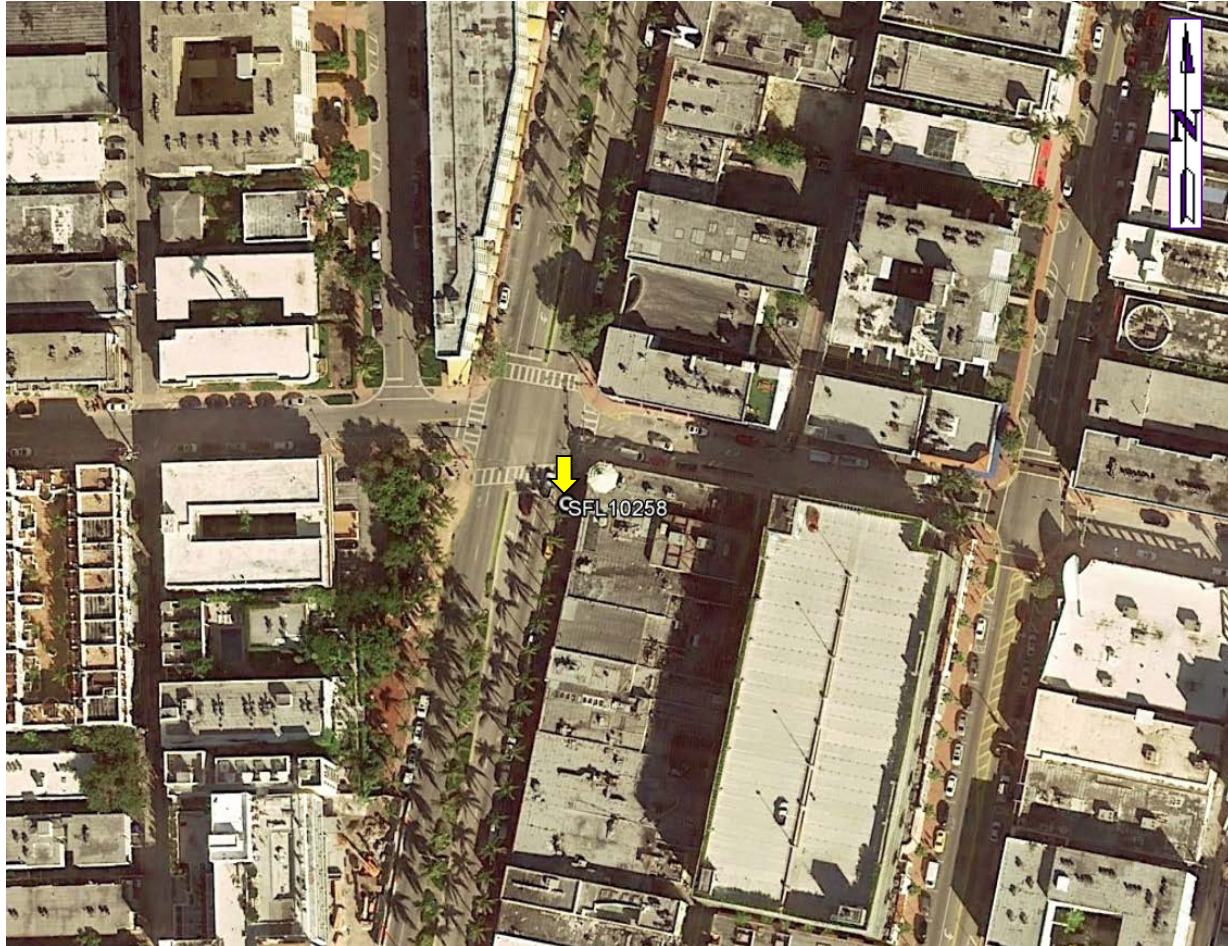
2199 PONCE DE LEON BLV, CORAL GABLES, FLORIDA 33134
PHONE: 305.446.7799 / FAX: 305.446.9275
FLORIDA REGISTRATION NUMBER: AR 0010865

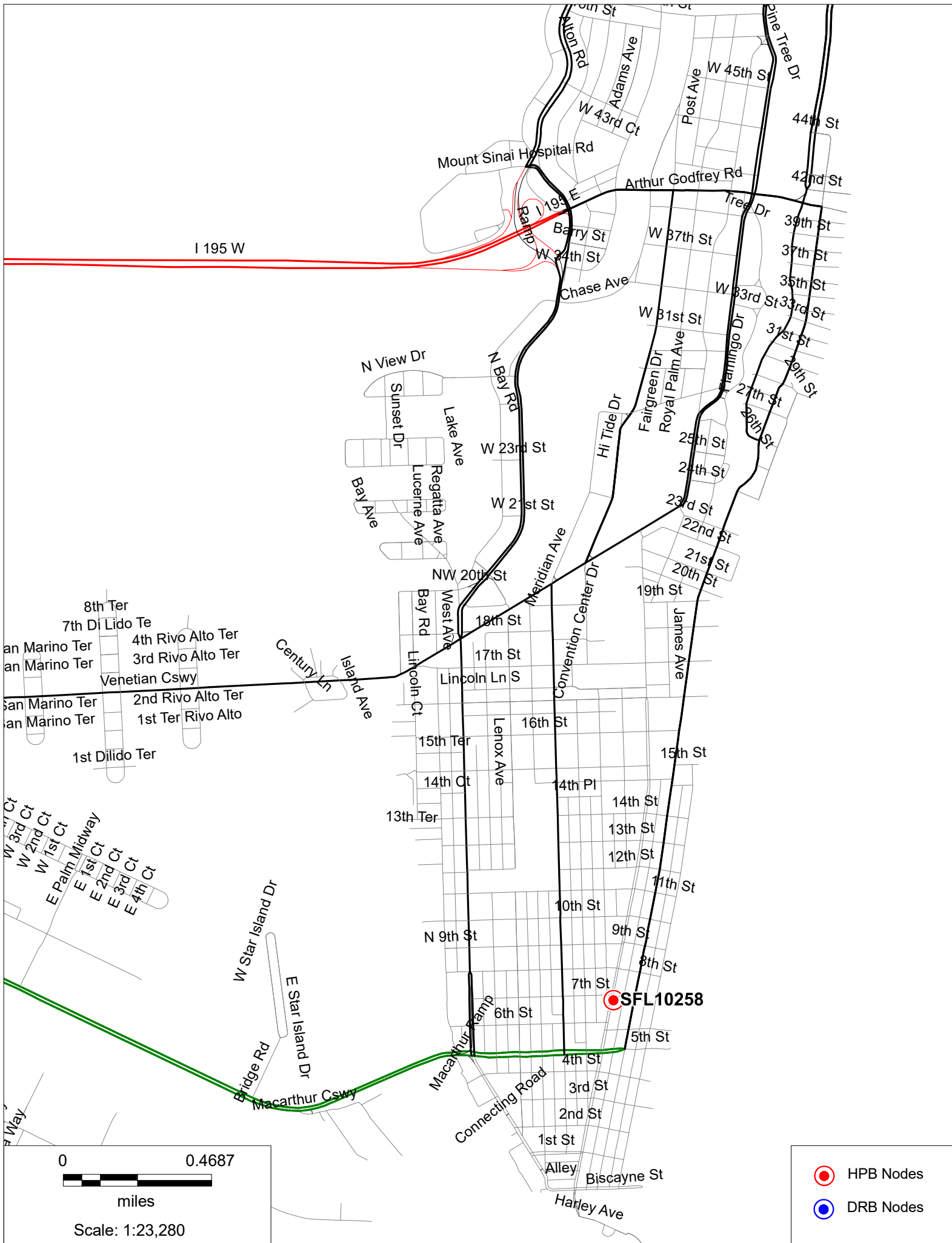
7.20.18

SFL10258

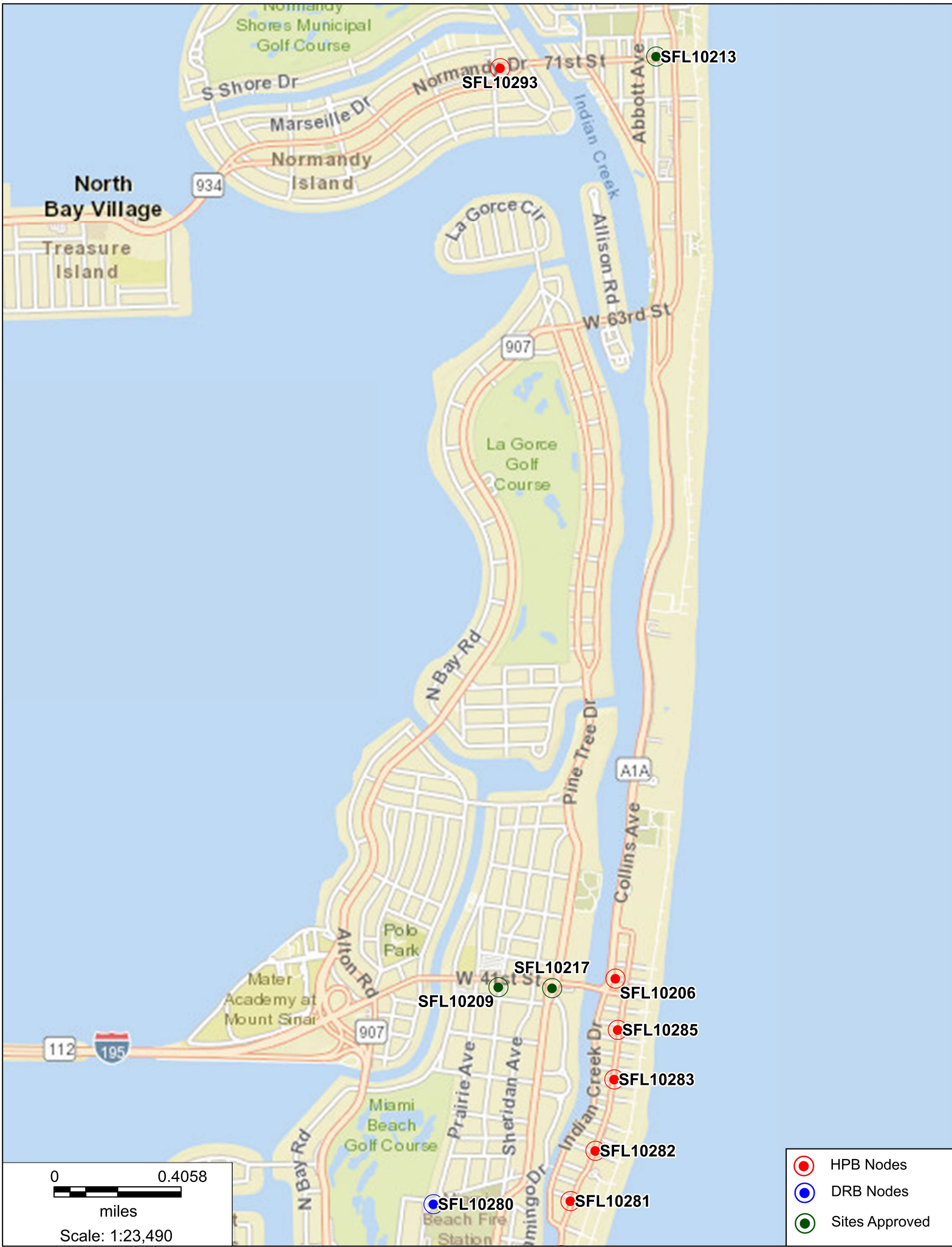
685 Washington Ave., Miami Beach, FL 33139

Aerial View







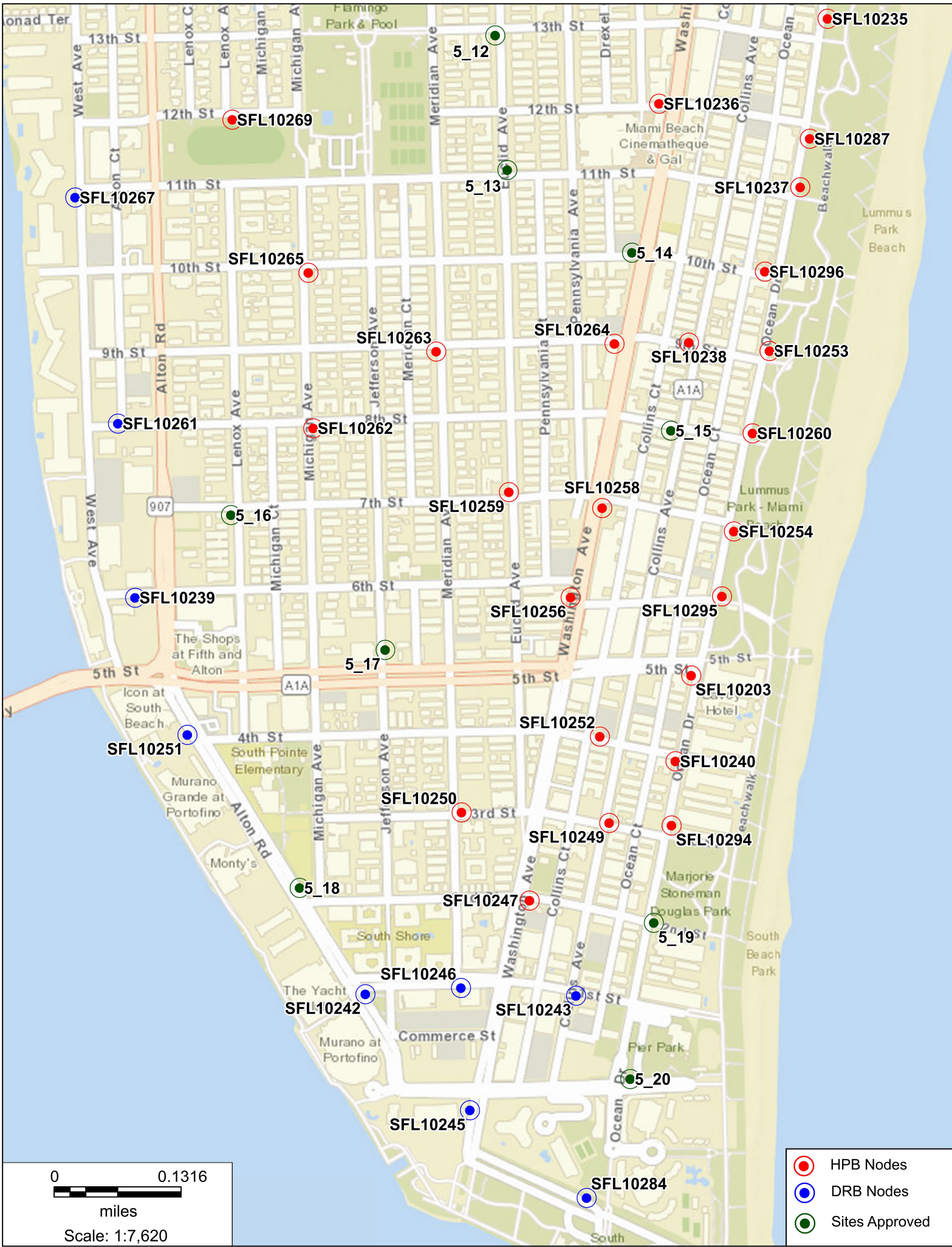






- HPB Nodes
- DRB Nodes
- Sites Approved

0 0.0933
miles
Scale: 1:5,401



SFL10258

685 Washington Ave., Miami Beach, FL 33139

Photosim - Proposed Small Wireless Facilities with 25' Cobra



SFL10258

685 Washington Ave., Miami Beach, FL 33139

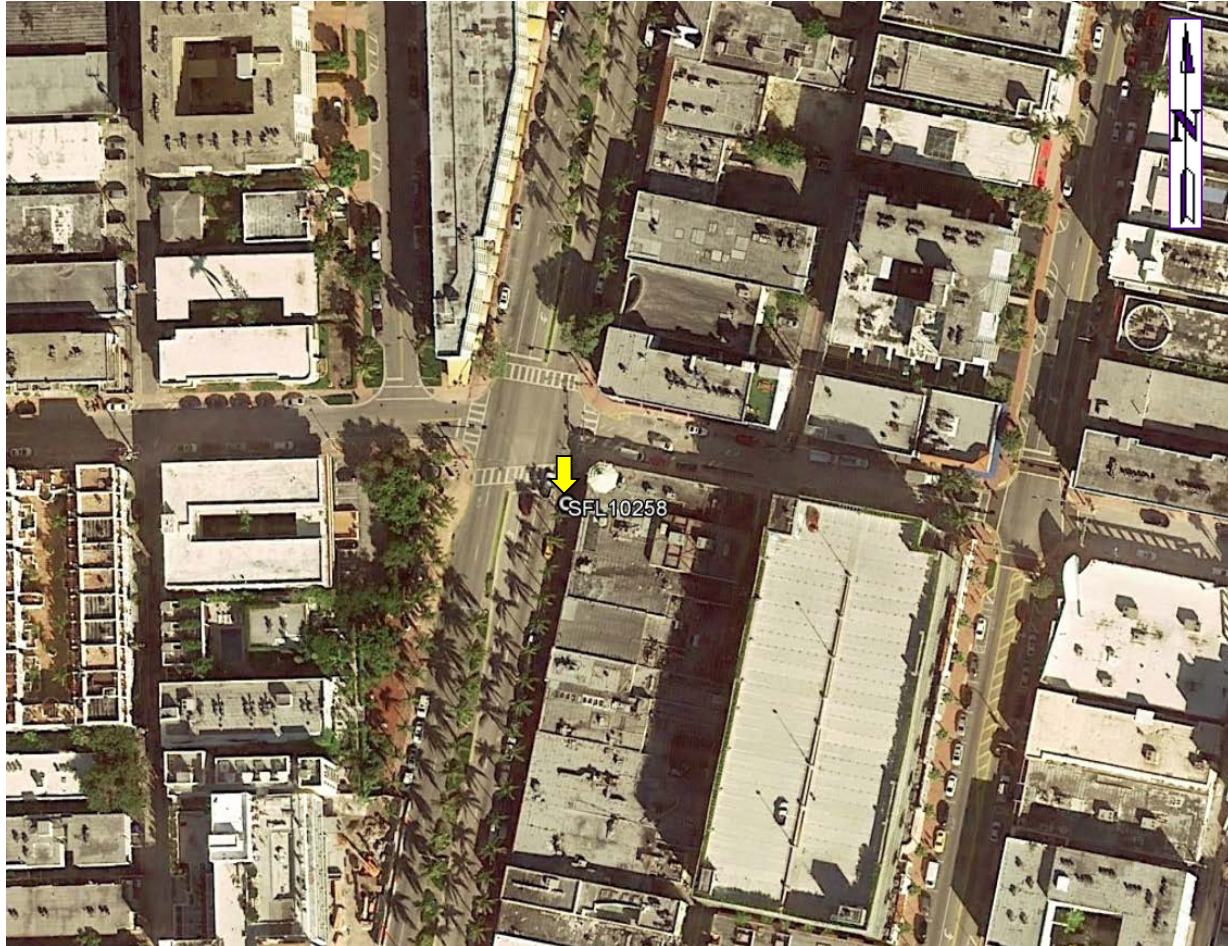
Photosim - Proposed Small Wireless Facilities with 25' Cobra



SFL10258

685 Washington Ave., Miami Beach, FL 33139

Aerial View



SFL10258

685 Washington Ave., Miami Beach, FL 33139

North



SFL10258

685 Washington Ave., Miami Beach, FL 33139

East



SFL10258

685 Washington Ave., Miami Beach, FL 33139

South



SFL10258

685 Washington Ave., Miami Beach, FL 33139

West

